

Governor's Advisory Commission
on Intermodal Transportation



Transportation excellence enhancing the quality of life in New Hampshire

2023-2032 Ten Year Plan Kickoff Meeting
Presentation Supplement

July 16, 2021

Table of Contents

Maps

Tiers 1 & 2 Interstate & Other Statewide Transportation Corridors

Tiers 3 & 4 Regional Transportation Corridors & Local Connectors

Public Use Airports

Public Transit Services.....

Urbanized Areas State of New Hampshire

Active Railroads

State-Owned Rail Trails - Available for Public Use.....

Turnpikes



Federal Aid Eligible Roads 2021

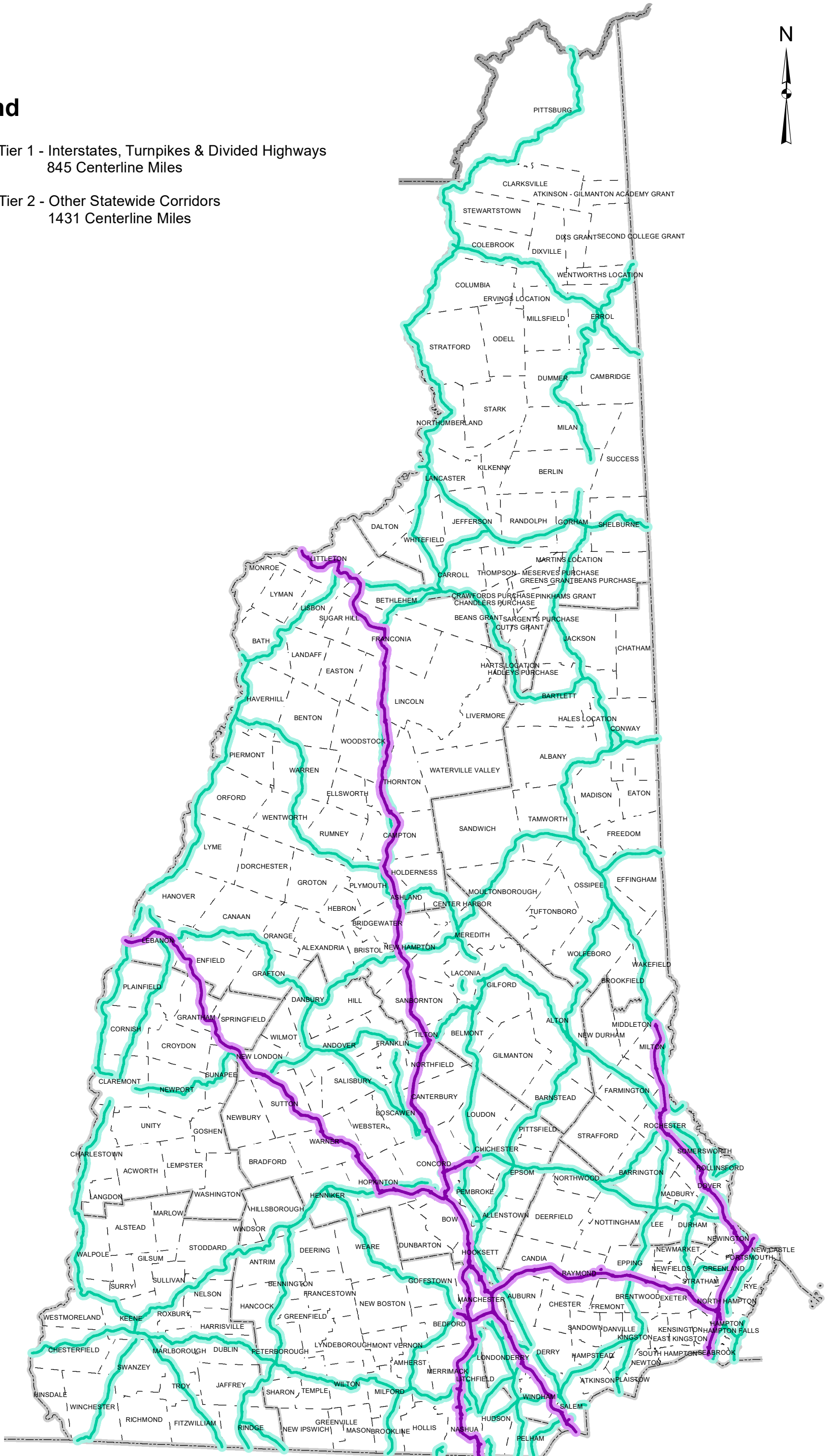
Corridor Study Program.....

Tiers 1 & 2

Interstate & Other Statewide Transportation Corridors

Legend



-  Tier 1 - Interstates, Turnpikes & Divided Highways
845 Centerline Miles
-  Tier 2 - Other Statewide Corridors
1431 Centerline Miles

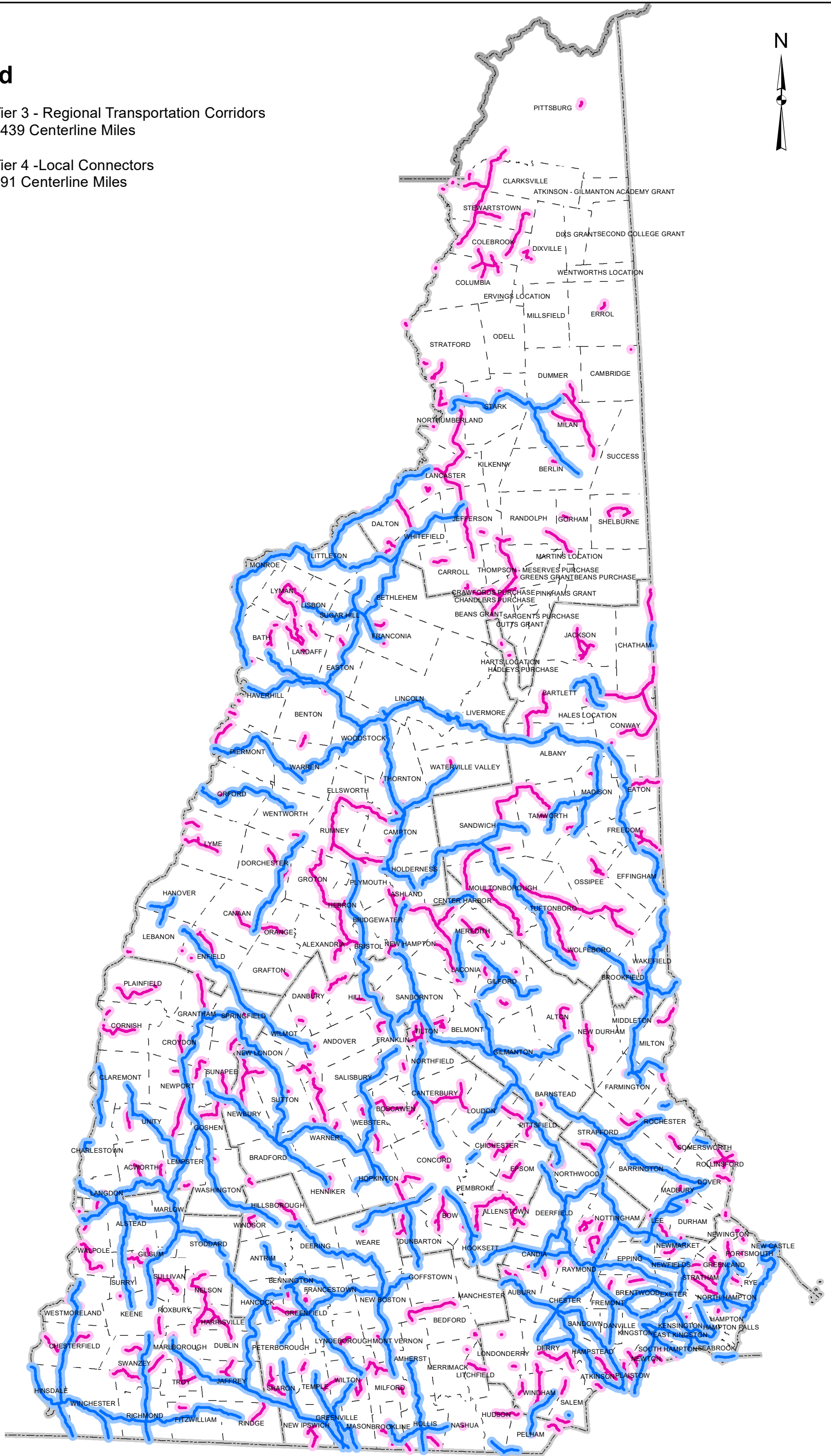


Tiers 3 & 4

Regional Transportation Corridors & Local Connectors

Legend

-  Tier 3 - Regional Transportation Corridors
1439 Centerline Miles
-  Tier 4 - Local Connectors
891 Centerline Miles



Public Use Airports

Legend

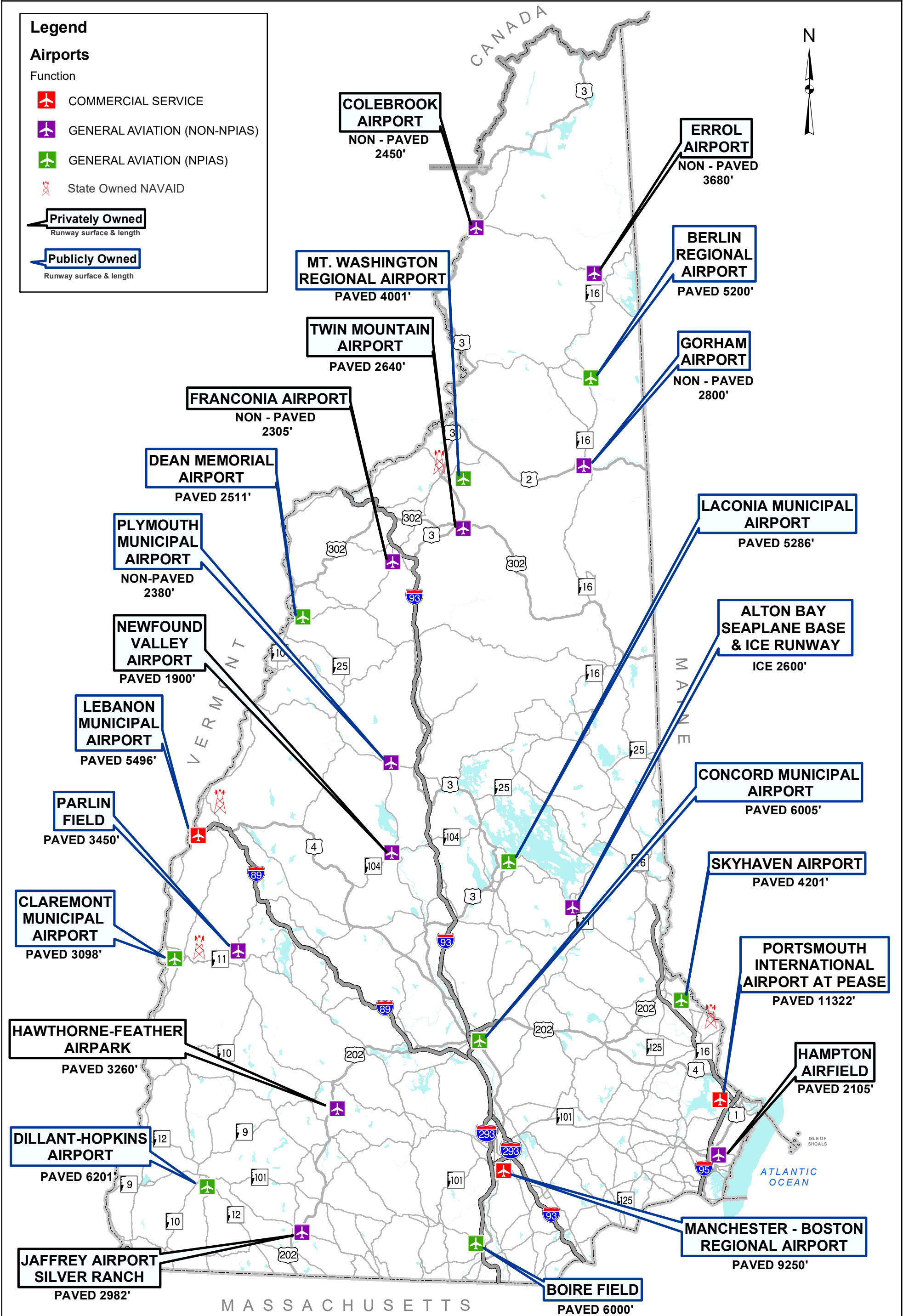
Airports

Function

- COMMERCIAL SERVICE
- GENERAL AVIATION (NON-NPIAS)
- GENERAL AVIATION (NPIAS)
- State Owned NAVAID

Privately Owned
Runway surface & length

Publicly Owned
Runway surface & length



Public Transit Services

Local Transit Provider Service Areas

- 1 North Country Transit
- 2 Carroll County Transit
- 3 Advance Transit
- 4 Sullivan County Transportation
- 5 Concord Area Transit
- 6 COAST
- 7 Wildcat Transit
- 8 Manchester Transit Authority
- 9 Keene City Express
- 10 CART
- 11 Nashua City Bus

Intercity Bus Routes

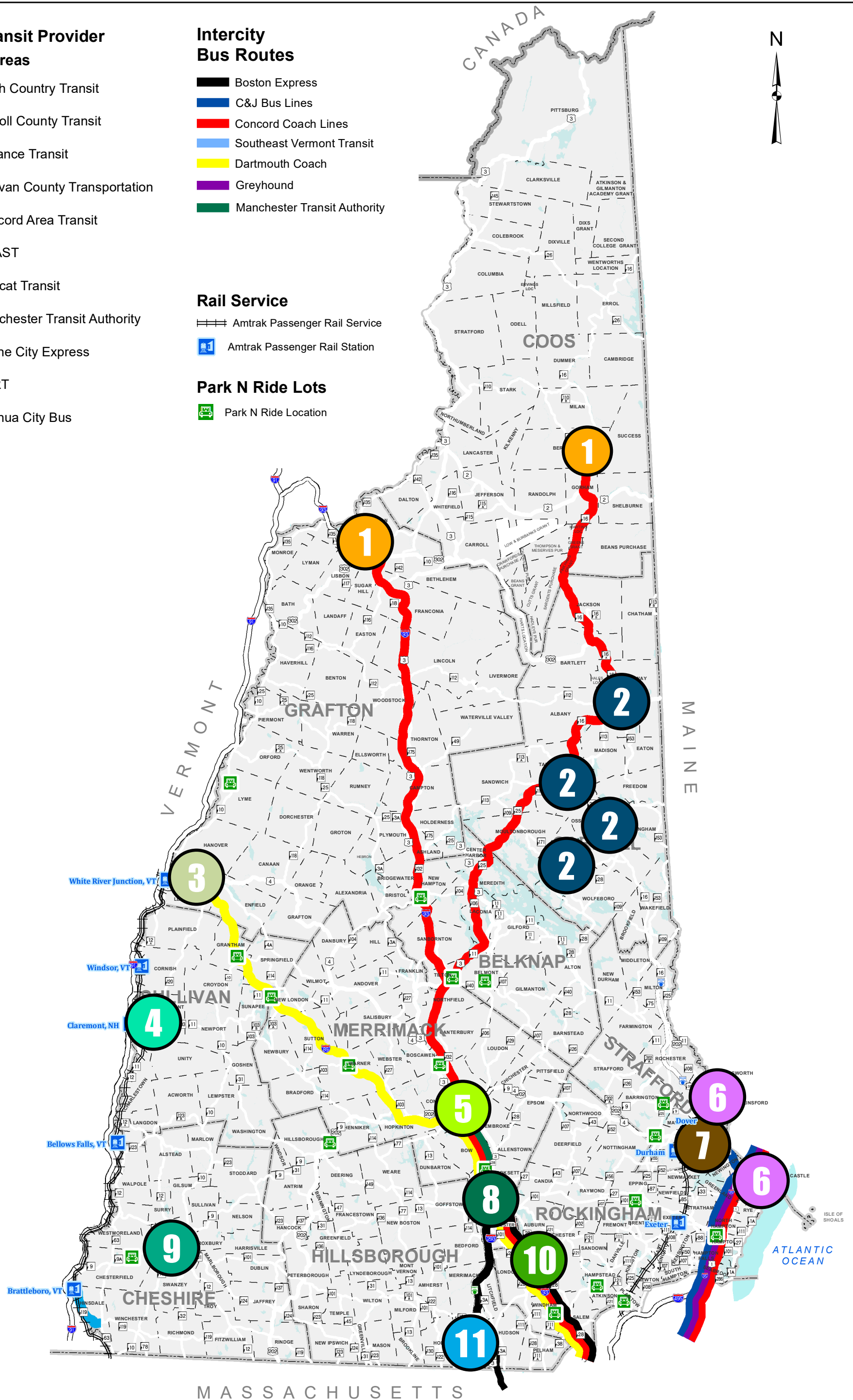
- Boston Express
- C&J Bus Lines
- Concord Coach Lines
- Southeast Vermont Transit
- Dartmouth Coach
- Greyhound
- Manchester Transit Authority

Rail Service

- Amtrak Passenger Rail Service
- Amtrak Passenger Rail Station

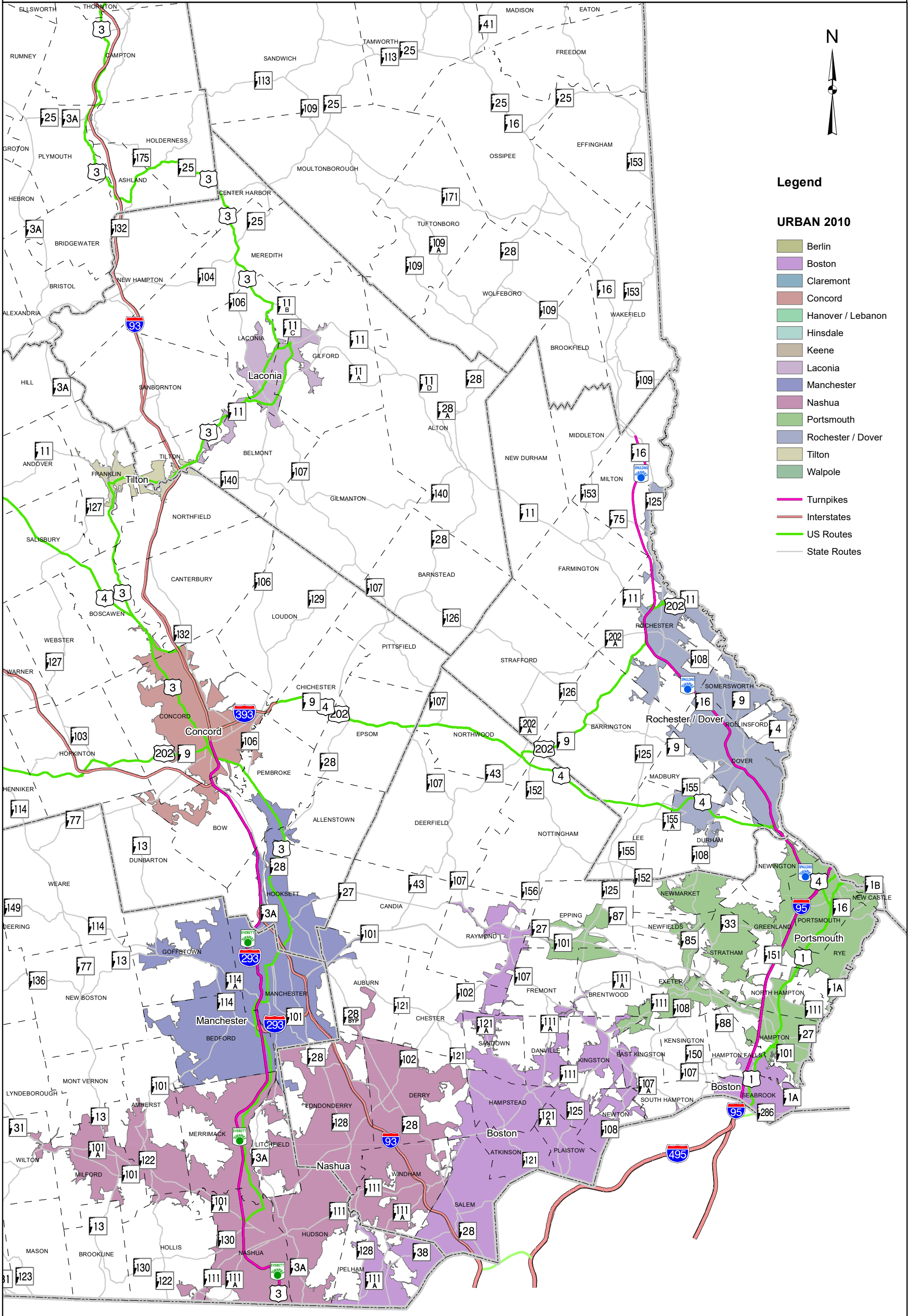
Park N Ride Lots

- Park N Ride Location



State of New Hampshire

Urbanized Areas



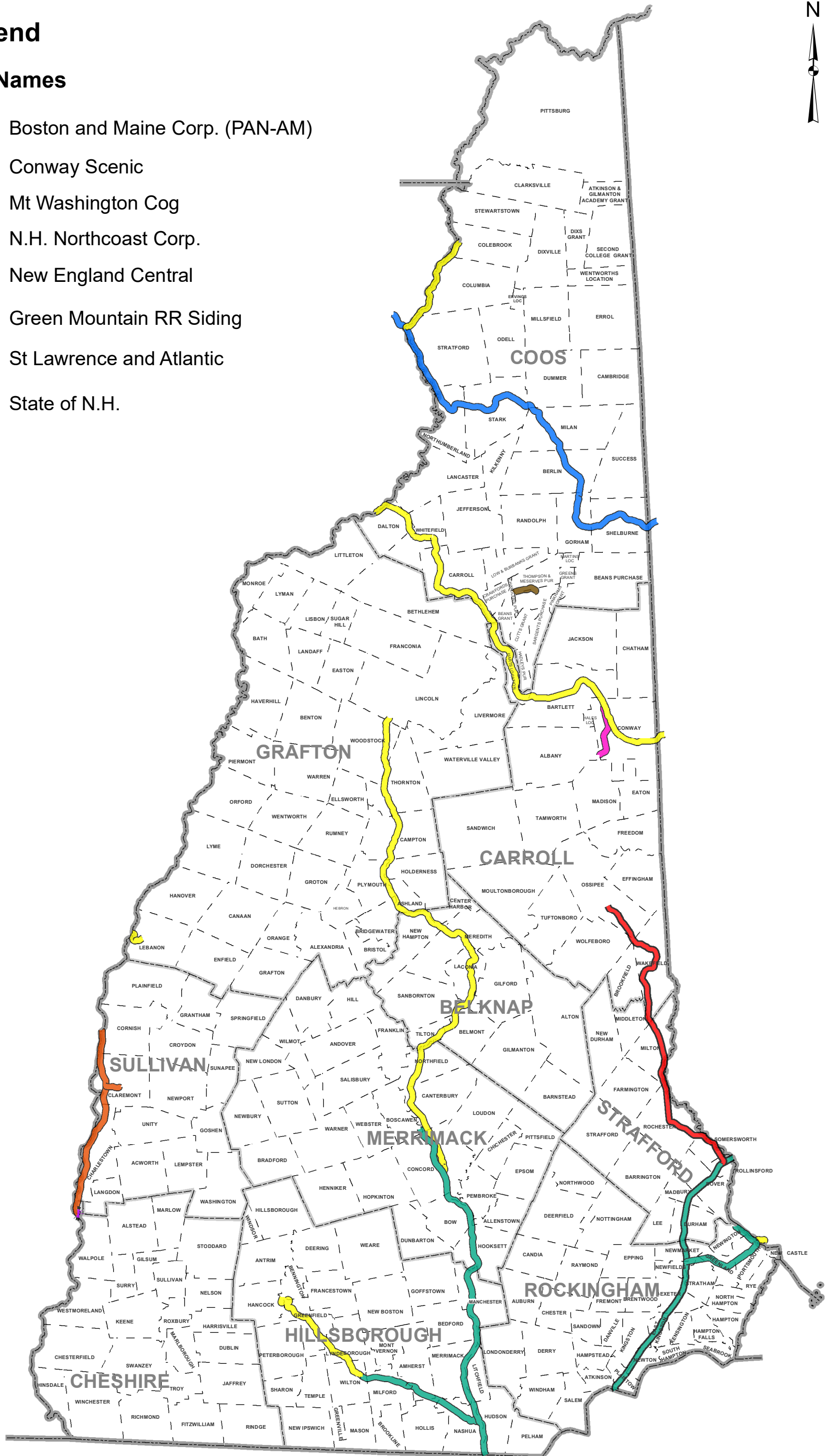
Active Railroads



Legend

Rail Names

- Boston and Maine Corp. (PAN-AM)
- Conway Scenic
- Mt Washington Cog
- N.H. Northcoast Corp.
- New England Central
- Green Mountain RR Siding
- St Lawrence and Atlantic
- State of N.H.



State-Owned Rail Trails

Available for Public Use



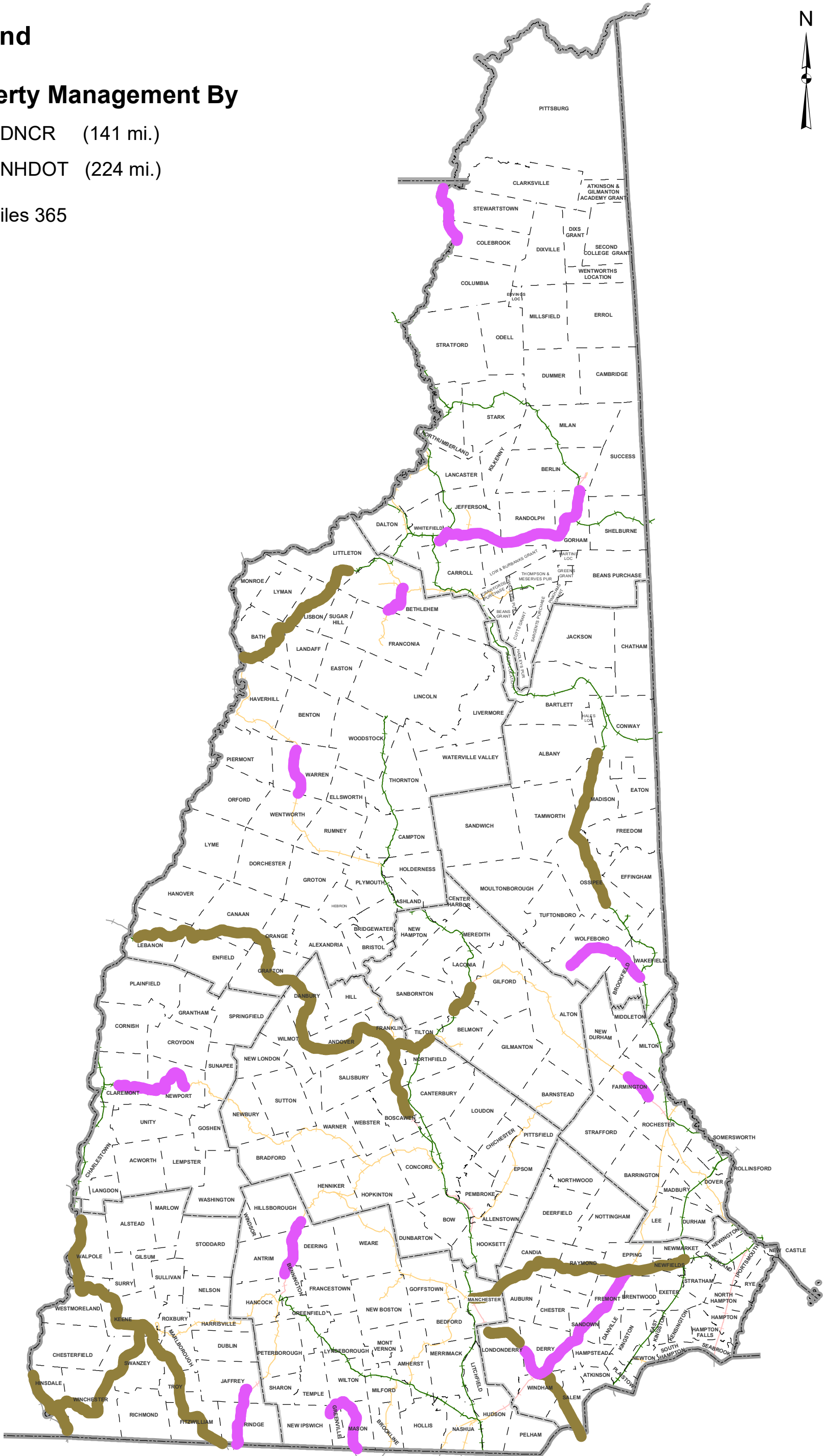
Legend

Property Management By

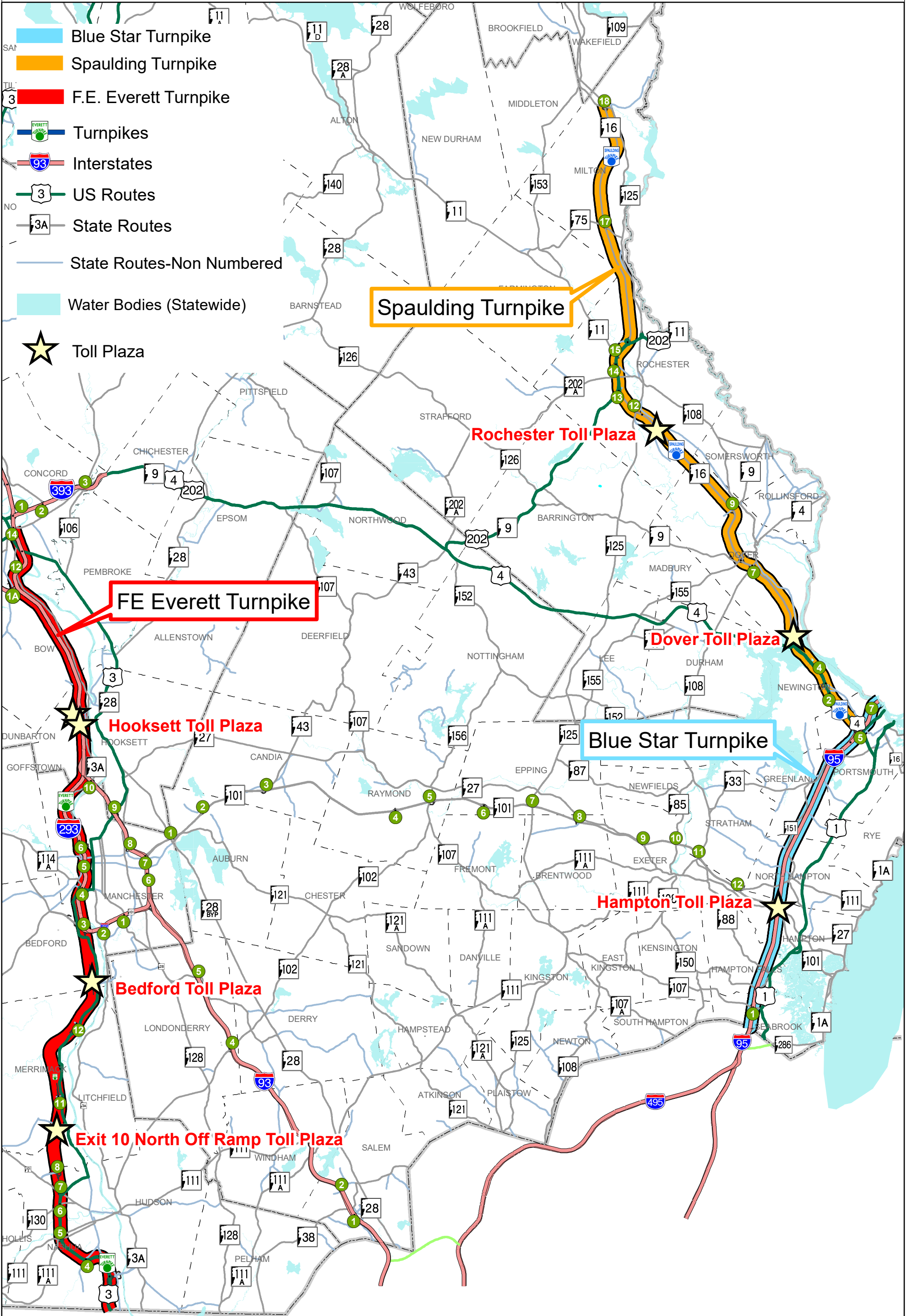
 DNCR (141 mi.)

 NHDOT (224 mi.)

Total Miles 365



Turnpikes



Federal Aid Eligible Roads

2021



Legend

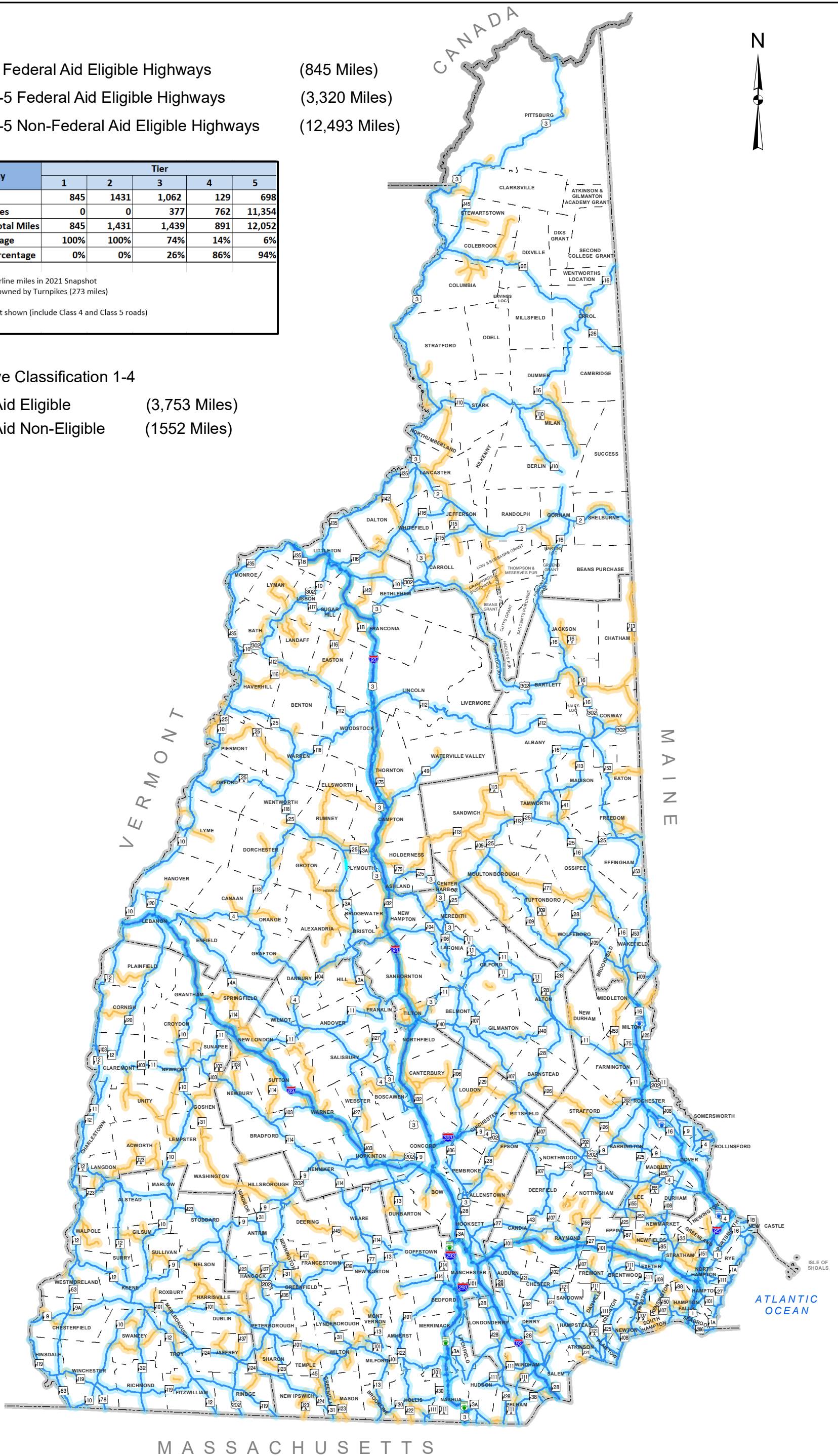
- Tier 1 Federal Aid Eligible Highways (845 Miles)
- Tier 2-5 Federal Aid Eligible Highways (3,320 Miles)
- Tier 1-5 Non-Federal Aid Eligible Highways (12,493 Miles)

Fed Aid Eligibility	Tier				
	1	2	3	4	5
Fed Aid Eligible Miles	845	1431	1,062	129	698
Non Fed Aid Eligible Miles	0	0	377	762	11,354
Total Miles	845	1,431	1,439	891	12,052
Fed Aid Eligible Percentage	100%	100%	74%	14%	6%
Non-Fed Aid Eligible Percentage	0%	0%	26%	86%	94%

Notes: 1. Based on centerline miles in 2021 Snapshot
 2. Includes miles owned by Turnpikes (273 miles)
 3. Includes Ramps
 4. Tier 5 Roads not shown (include Class 4 and Class 5 roads)

State Legislative Classification 1-4

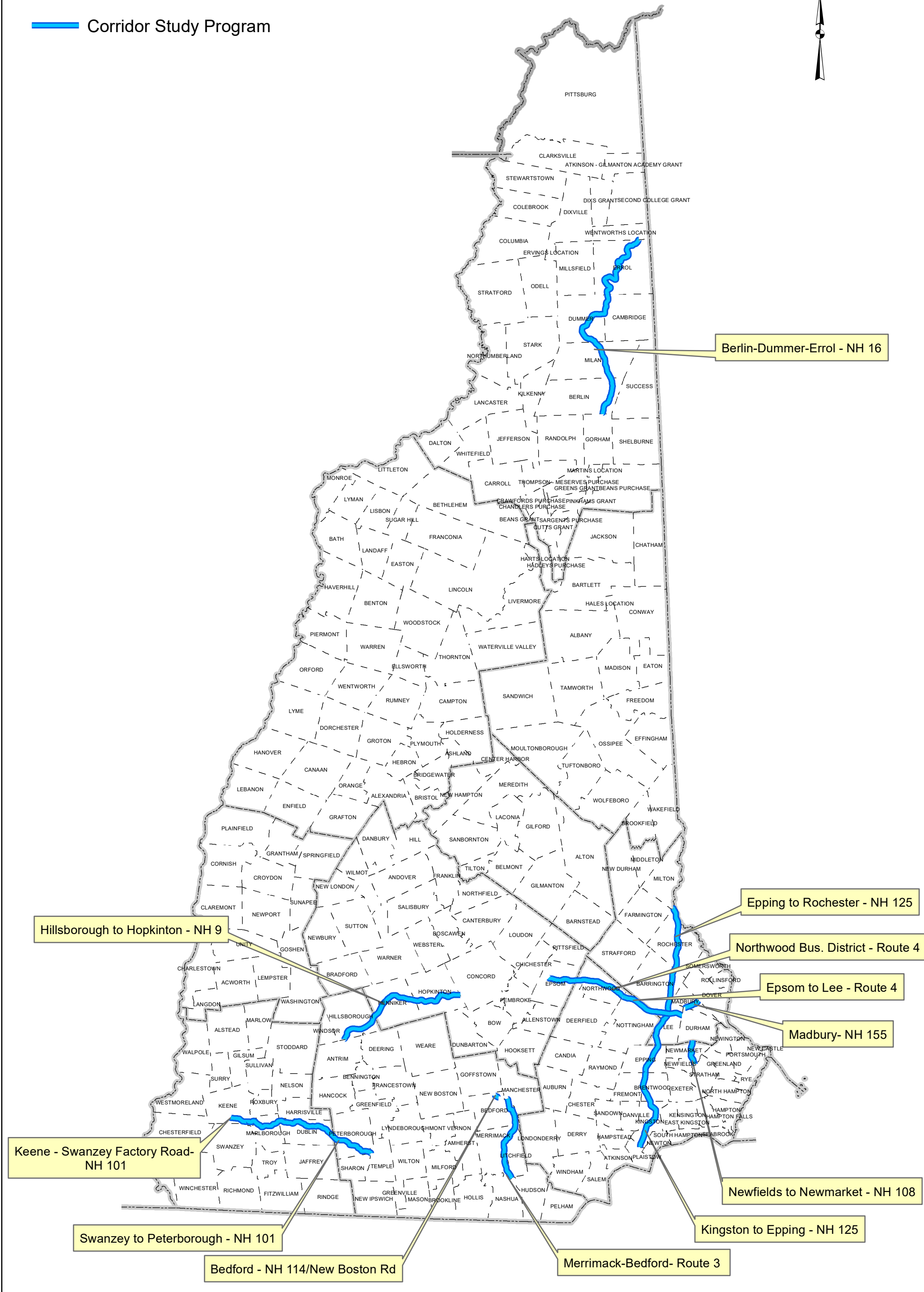
- State Federal Aid Eligible (3,753 Miles)
- State Federal Aid Non-Eligible (1552 Miles)



Corridor Study Program

Legend

 Corridor Study Program



Mission: Transportation excellence enhancing the quality of life in New Hampshire.

Purpose: Transportation excellence in New Hampshire is fundamental to the state's sustainable economic development and land use, enhancing the environment, and preserving the unique character and quality of life. The Department will provide safe and secure mobility and travel options for all of the state's residents, visitors, and goods movement, through a transportation system and services that are well maintained, efficient, reliable, and provide seamless interstate and intrastate connectivity.

Vision: To increase safety, reliability and multimodal travel options that link rural and urban communities through an interconnected highway network, airport system, transit, rail and active transportation services. To be stewards of New Hampshire's transportation system, providing increased mobility, encouraging smart growth and supporting economic development. To further reduce transportation's impact on the State's natural, cultural and social resources, ensuring that transportation enhances the quality of life in New Hampshire. To secure dedicated and sustainable revenue streams for transportation that will allow the Department to plan and deploy its diverse human and financial resources effectively, ensuring the system is maintained in a good state of repair. To embrace innovation in planning, designing, constructing, operating and maintaining the transportation system, increasing efficiency, enhancing safety, and meeting the Transportation needs of the future.

Christopher T. Sununu, Governor

Executive Councilors:

Joseph D. Kenney - District 1

Cinde Warmington - District 2

Janet Stevens - District 3

Theodore L. Gatsas - District 4

David K. Wheeler - District 5

New Hampshire Department of Transportation

7 Hazen Drive

Concord, New Hampshire 03302-0483

www.nhdot.com

