



3 Months Simulator

ANDREW AZIZ

Disclaimer

BearBullTraders.com employees, contractors, shareholders and affiliates, are **NOT an investment advisory service, a registered investment advisor or a broker-dealer and does not undertake to advise clients on which securities they should buy or sell for themselves.**

You understand that **NO** content published as part of the BearBullTraders Room and its Website constitutes a recommendation that any particular investment, security, portfolio of securities, transaction or investment strategy is suitable for any specific person.

You further understand that none of the creators or providers of our Services or their affiliates will advise you personally concerning the nature, potential, value or suitability of any particular investment, security, portfolio of securities, transaction, investment strategy or other matter.

What you want to get after this 3 months?

Traders want result fast because:

1. I do not have time and need income.
2. I do not have enough savings to wait and practice
3. I heard it is easy. (Trap: industry marketing)

One trader emailed me said: *“I can not afford to trade in a simulator, I need to go live now....”*

Do you think he is still trading?

What you want to get after this 3 months?

~~I will become a trader and can make a living out of it.~~ **NO!** (possible but unlikely)

You will learn how to plan your trading business and if this is for you or not.



Are these professionals profitable in 3 months?

Trading career is no different.....

As a beginner trader your goal is to simply:

1. Learn how to recognize trading patterns
2. Practice good execution and risk management (proper size and stop loss)

You should learn these with little or no money at risk.

Trading education is actually really cheap compare it to other business:

Trading education:

\$450 + 6 months practice

(no, you are not guaranteed any income after)

Now compare...

Many professional degrees:

+\$20,000/year + few years school

(and still not guaranteed any income)



3 Stages of Trading Education

1. Mechanical Aspect

- Learn how to use your tools: Broker, Platform (DAS), Hotkeys, Scanner, Chatroom, Journaling etc

2. Technical Aspect

- Learn how to find Stocks in Play
- Practice strategies. Find the best that works for you.
- Practice entry, exit and stop loss (risk management)
- Practice “*recognition*” of trading patterns
- Position Sizing and trade management

3. Psychology of Trading

- Emotional trading
- Fear, greed and chasing the trade...
- Revenge trading
- How to deal with losses



If there is such a thing as a **secret to the nature of trading, this is it.**

Failure Story

Pausing trading for few weeks Inbox x

Jun 23 (6 days ago) ☆

to me, Andrew ▾

Hi Andrew,

I traded very badly and blew up half of my account (5k)

My main problems were -

- 1) Fear and carelessness in cycles
- 2) Bad position sizing
(initially i went small size - 100 shares. but SureTrader commissions was beating me up as it is \$5 per trade minimum. Initial days I was having net loss although I realized profit in the trades. Then I wanted to double the size and reduce scaling out - but that made it worse when I entered the wrong trade)
- 3) Revenge Trading - sometimes I opened the terminal in afternoons just to watch the market, but I ended up trading and made bigger and bigger losses)
- 4) Few times I did mirror trading by copying you out of desperation, but I did not plan my share size correctly.

I plan to take a little time off and study more, and get my psychology right..
I made known mistakes which is why I am more frustrated and angry with myself.

I thought trading was going to be easy and I knew all the basics, but in reality I managed risk poorly. I will work on this, and I hope my next attempt will be better.

Temporarily I will unsubscribe from the chat room - I am confused and want to take some time. I will join back shortly.

Thanks much.

Regards,

Your Package

- Every 2 weeks, a live session with me (but you can attend as many times as you want).
 1. DAS On boarding (this one)
 2. Stocks in Play and Support and Resistance Levels
 3. Orders, Price Action, Strategies
 4. Strategies, Risk management, Psychology and how to go live.
- ***NOTE: I can not go over your individual trades, but I offer one-to-one mentorship if you like.***
- In my opinion more expensive course are not necessarily effective (**you can not buy your way into any career**)
- Invest in a longer time simulator account instead.

DAS Platform Introduction



- DAS is a NASDAQ Platinum Partner: the highest market functionality

There are only 4 Platinum Partner Order Entry Platform.

<https://www.nasdaqtrader.com/trader.aspx?id=CertifiedPartners>



The Nasdaq Certified Partners Program

The Nasdaq Certified Partners Program was created to inform market participants of the Nasdaq service bureaus that provide the highest levels of functionality, access and timely implementation of enhancements for Nasdaq markets. This program was designed to help customers make informed choices about which service bureau is the right solution for their business. The Certified Partners Program is an evaluation program for which Nasdaq service bureaus must apply.

- [Certified Partners Program Fact Sheet \(PDF\)](#)
- [Qualification Criteria Checklist \(PDF\)](#)

Maintaining Certified Partner Status

In order for the Certified Partners Program to benefit trading firms on a long-term basis, service bureaus will need to maintain their certification levels when Nasdaq implements significant enhancements. Nasdaq reviews our Partners' software frequently and as required by major initiatives.

Platinum Partners	Silver Partners	Bronze Partners
-------------------	-----------------	-----------------

Platinum Partners
Platinum Partners provide the highest level of Nasdaq market functionality to their customers. They ensure that their trading products provide access to Nasdaq and Nasdaq BX (BX) order types and routing strategies, access to the NASDAQ Opening and Closing Crosses, as well as many other market features. In addition, Platinum firms implement enhancements within 30 days of changes to a Nasdaq system.

Bloomberg
Bloomberg's Sell Side Equity Order Management System (SSEOMS) combines real-time trading with world class analytics and market data from the Bloomberg Professional service. SSEOMS includes dynamic Position Management, Order Management, Quote/Liquidity Management, as well as real time best execution analysis and reports. SSEOMS connects to NASDAQ, NYSE, Euronext, XETRA as well as to multiple U.S. Back Office systems (BETA, ADP, NFS, CSC, SIS, Pershing, Pragmatic, Bear Stearns and Spear Leads).

This Partner offers NASDAQ TotalView with NOII.
MARKET MAKER Contact Number: +1 212 617 2200

citi
Citi's electronic trading solutions, including the Lava technology, are developed as high-performance trading products for our clients and the financial services industry. These products are created as true ASP solutions built to withstand maximum volumes in the most volatile conditions. Our Lava technology was the first solution to truly consolidate market data distribution and order execution capabilities across all major liquidity sources, including NASDAQ, Listed exchanges, ECNs and ATs. Our OTC, Listed and Foreign Exchange solutions are used by leading broker/dealers, market makers, hedge funds and institutional investors.

This Partner offers NASDAQ TotalView with NOII.
MARKET MAKER Contact Number: +1 212 609 0100

DAS INC
Empowering Active Traders
DAS Inc is an industry leader in direct access trading technologies which offers to the brokerage and trading community end-to-end electronic trading solutions. DAS is a Market Data Vendor and Service Bureau to NASDAQ, NYSE, Option Pricing, Pink Sheets, DAS products and its infrastructure are unique because of the choice of routing and direct connectivity to the various exchanges and the ability to offer low latency trading capability that are all package at an affordable price. We are also one of the 1st company to launch a full streaming real-time level 2 market data and trading apps for the Apple's iPhone, iTouch and iPad environment. iDAS Trader is unique because it is the only direct access trading app currently available on the Apple app store with the same routing capability of our DAS Trader PRO window's application.

This Partner offers NASDAQ TotalView with NOII.
ORDER-ENTRY Contact Number: +1 845 282 7859



NOTE: I am not affiliated with DAS.

DAS Platform Introduction

- **DAS also offers live trading platform.**
 - **This is critical!** Trading in a simulator that is not designed for live trading is waste of money and time
- Important brokers are licensing DAS for their platform.
 - **Interactive Brokers:** Optional for users
 - **SpeedTrader** (Built-in already, platform fee being charged)
 - **SureTrader** (Built-in already, platform fee being charged)
- Let's go though my platform and my indicators

NASActive	NASGain	NASLost	LSTActive	LSTGain	LSTLost
DCTH	VERI	CRME	VXX	EBR	NAP
AMD	RTNB	WMIH	BAC	WUBA	VHC
QQQ	CHRS	FRAN	SPY	THC	JKS
INTC	NTLA	LGCY	GE	XCO	UVXY
AAPL	XL	DGLY	GDX	LEE	MN
MU	AV	FINL	XLF	HLF	JONE
CSCO	AV	SPEX	SNAP	CYH	FENG
FALC	CSSE	CHKE	VALE	DWT	NETS
MSFT	JRJC	VBIV	INFY	RUBI	NAT
TVIX	AMSC	WATT	UVXY	FCAU	DNR
JD	AVEO	CSIQ	USO	BHVN	CVRS
CMCSA	ZN	TVIX	F	CDE	KS
NVDA	TRHC	NDSN	EEM	UGAZ	OILU
XIV	IDXG	MBRX	VIPS	DYN	ANW
AMAT	OTIC	EKSO	CHK	RT	FL
OPXAW	SCMP	LGCYO	CPN	BW	UWT
ARCI	CENX	SPWH	FCX	HBM	JMEI
SBUX	ICON	TTNP	FL	TGB	EXPR
FB	MYOK	CRIS	BABA	SCO	DGAZ



FB 167.79 -- 167.9 Facebook, Inc. - Class A Common Stock

FB ↑ 168 - 165.82 PCL 167.41 Q

Last 167.78 0.37 (0.22%) Vol 11,899,992

Lv1 167.79 167.9 Vwap: 167.17 S

MMID	BID	SIZE	MMID	ASK	SIZE
ARCA	167.790	5	EDGX	167.900	7
EDGX	167.710	3	NSDQ	167.900	2
NASD	167.650	2	NASD	167.900	2
NSDQ	167.650	2	NSDQ	167.910	1
NSDQ	167.330	5	ARCA	167.950	1
NSDQ	167.320	1	NSDQ	167.950	0
NSDQ	167.100	2	NSDQ	167.980	1

Montage \INET

LONG at mkt. limit SELL half SELL all

SHORT at mkt. limit COVER half COVER all

Accept Sell 200 FB 168 --SMAT--18:21:13--

200 P Display 168 TMP ? PD

LIMIT Pref DAY+ ANY TRVANANDREW Trigger

Stop Type Trigger Price

Limit TPrice RPL CAP

SHRT CXL BUY

Market Clock

TEST

08/21/17 18:22:03

Account	Type	Realized	Unrealized	Equity	PP
TRVANANDREW	Margin(Demo)	0.00	-22.00	25000.00	66420.00

Symb	Account	Shares	Avgcost	Realized	Unrealized	Type
FB	TRVANANDREW	200	167.9	0.00	-22.00	Margin

X	Status	Symb	Side	Qty	Price	Route	Type	Account
X	Accepted	FB	S	200	168	SMAT	L	TRVANANDREW

Market View

Symbol	% Change	Last	Volume	Company Name
INDUS	0.13	21703.75	277,876,084	DOW JONES 3
SPX\$	0.12	2428.37		S&P 500
COMP\$	-0.05	6213.13		NASDAQ Com
MSFT	-0.46	72.16	17,713,820	Microsoft Corp
GOOG	-0.44	906.66	942,536	Alphabet Inc. -
FB	0.22	167.78	11,899,992	Facebook, Inc.
AAOI	-4.5	61.2	3,113,398	Applied Optoe
AAPL	-0.22	157.16	26,342,767	Apple Inc. - Co
TEVA	-1.4	17.06	11,707,251	Teva Pharmace
BABA	1	169.17	22,322,025	Alibaba Group I
LITE	-1.7	51.1	1,436,030	Lumentum Hold
FL	-7.1	31.95	23,086,781	Foot Locker, In



Price	Qty	Exch
167.78	192	FADF
167.78	8	FADF
167.85	8	FADF
167.78	8	FADF
167.83	1	ARCA
167.85	120	FADF
167.85	80	FADF
167.85	200	EDGX
167.85	20	EDGX
167.9	1	NASD
167.9	1	FADF
167.79	150	FADF
167.9	30	FADF
167.79	210	FADF
167.9	150	NASD
167.9	1	NASD
167.9	164	FADF
167.9	6	NASD
167.9	230	FADF
167.9	325	FADF
167.9	1	NASD
167.9	577	FADF
167.89	29	FADF
167.85	8	FADF
167.85	2	FADF
167.9	1	ARCA

Trade Log

Event	B/S	Symb	Shares	Price	Route	Time	Account	Note
Accept	Sell	FB	200	168	SMAT	18:2...	TRVAN...	
Sending	Sell	FB	200	168	SMAT	18:2...	TRVAN...	
Execute	Buy	FB	200	167.9	SMAT	18:2...	TRVAN...	
Accept	Buy	FB	200	168	SMAT	18:2...	TRVAN...	
Sending	Buy	FB	200	168	SMAT	18:2...	TRVAN...	

Closed Positions P&L

Symb	Realized	Type	Company Name	Account
FB	0.00	Margin	Facebook, Inc. - Class A C...	TRVANANDREW
Summary	0.00			

Dastrader

File Trade Quotes Admin Setup Tools Windows Help

Top List

NASActive	NASGain	NASLost	LSTActive	LSTGain	LSTLost
DCTH	VERI	CRME	VXX	EBR	NAP
AMD	RTNB	WMIH	BAC	WUBA	VHC
QQQ	CHRS	FRAN	SPY	THC	JKS
INTC	NTLA	LGCY	GE	XCO	UVXY
AAPL	XPLR	DGLY	GDX	LEE	MN
MU	AVXL	FINL	XLF	HLF	JONE
CSCO	ACTG	SPEX	SNAP	CYH	FENG
FALC	CSSE	CHKE	VALE	DWT	NETS
MSFT	JRJC	VBIV	INFY	RUBI	NAT
TVIX	AMSC	WATT	UVXY	FCAU	DNR
JD	AVEO	CSIQ	USO	BHVN	CVRS
CMCSA	ZN	TVIX	F	CDE	KS
NVDA	TRHC	NDSN	EEM	UGAZ	OILU
XIV	IDXG	MBRX	VIPS	DYN	ANW
AMAT	OTIC	EKSO	CHK	RT	FL
OPXAW	SCMP	LGCYO	CPN	BW	UWT
ARCI	CENX	SPWH	FCX	HBM	JMEI
SBUX	ICON	TTNP	FL	TGB	EXPR
FB	MYOK	CRIS	BABA	SCO	DGAZ

1: Top Loss

NASActive: Nasdaq highest volume
 NASGain: Nasdaq highest gainer
 NASLost: Nasdaq highest lost

LSTActive: Other listed exchanges highest volume
 LSTGain: Other listed exchanges highest gain
 LSTLost: Other listed exchanges highest lost

Exchanges:
 NASDAQ = Q
 NYSE = N (New York Stock Exchange)
 AMeX = A (American Stock Exchange)

Market View

Symbol	% Change	Last	Volume	Company Name
INDU\$	0.13	21703.75	277,876,084	DOW JONES 3
SPX\$	0.12	2428.37		S&P 500
COMP\$	-0.05	6213.13		NASDAQ Com
MSFT	-0.47	72.15	17,734,292	Microsoft Corp
GOOG	-0.44	906.66	943,327	Alphabet Inc. -
FB	0.29	167.9	11,907,000	Facebook, Inc.
AAOI	-4.5	61.2		
AAPL	-0.19	157.2		
TEVA	-1.4	17.06		
BABA	1	169.18		
LITE	-1.7	51.1		
FL	-7.1	31.95		

2

- Delete
- New Row
- Config
- View TopLists >
- View HiLowTickers >
- User Defined List
- Save As Undefined
- Export
- Import...
- Auto Fit

View Config

Window Title: Market View

Decimal number: 0

Font Color Set: ABCD 1234

Color Set:

- Symbol: Secsym Color
- UpTicket: UpTicket Color
- DownTicket: Down Ticket Colo
- Background: Background Colo
- Strip 1 Color
- Strip 2 Color
- Seperator: Seperator Color

Symbol Color Set:

- Enable Symbol Color Set:
- Foreground color for Up: Up Color
- Foreground color for Down: Down Color
- Background color for High: High Color
- Background color for Low: Low Color

Columns:

- Symbol
- Tick
- Change
- Last
- Bid
- Ask
- Size
- Volume
- High
- Low
- Open
- TodayClose
- PrevClose
- % Change
- Range
- Imbalance
- Company Name
- ChgFromOpen
- %ChgFromOpen

Buttons: Commit, Cancel

How to add more watchlist:

Dastrader

File Trade Quotes Admin Setup Tools Windows Help

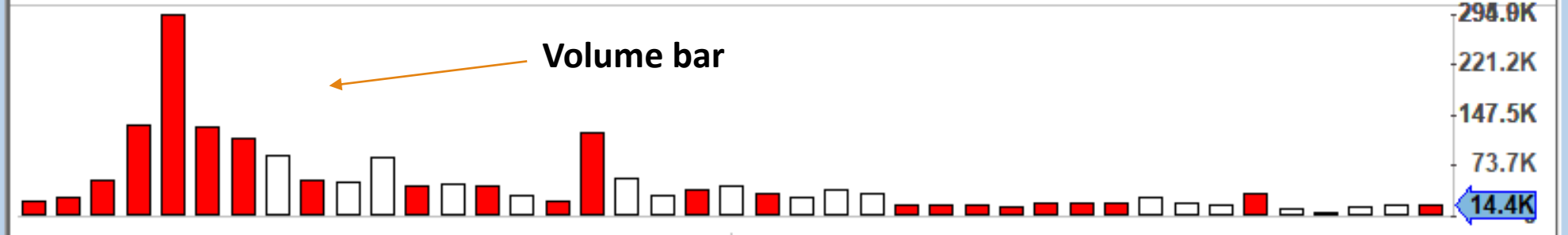
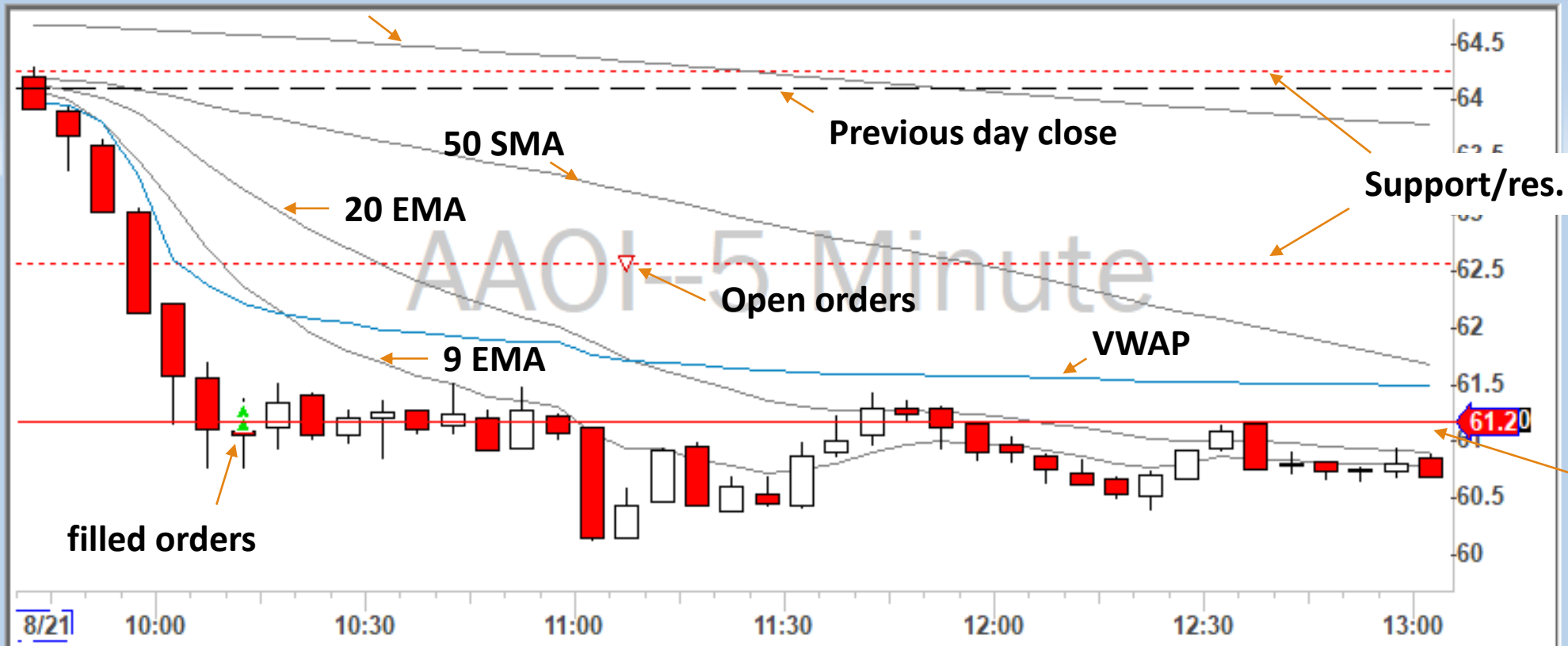
Time/Sale

- Market Viewer >
 - Market View
 - Futures View
 - DJI 30
 - NASDAQ 100 1-50
 - NASDAQ 100 51-100
 - Viewer 6
 - Viewer 7
 - Viewer 8
 - Viewer 9
 - Viewer 10
 - Viewer 11
 - Viewer 12
 - Viewer 13
 - Viewer 14
 - Viewer 15
 - Viewer 16
 - Viewer 17
 - Viewer 18
 - Viewer 19
 - Viewer 20
- High Low Ticker
- Top List
- L1 Ticker
- ECN Time/Sale
- Option Chain
- Chart
- Imbalance

Market indices:
 INDU\$: Dow Jones
 SPX\$: S&P 500
 COMP\$: Nsdq comp.

AAOI--5 Minute

200 SMA



8/21/2017 11:20 Hi: 60.7 Lo: 60.3955 O: 60.3955 C: 60.6 V: 43,514 VWAP:61.643 AVG:61.452 AVG:60.792 AVG:62.991 AVG:64.268



Study Config

Studies	Studies in Chart
Price	Price (Candle)
Volume	VWAP ()
Moving Average	Moving Average (Exponent@20)
STO	Moving Average (Exponent@9)
Momentum	Moving Average (Simple@50)
RSI	Moving Average (Simple@200)
OBV	PriceMarker (Y Low,Y High,YY High,YY Low)
VAD	
CMF	
Envelopes	
Bollinger Bands	
CCI	
MACD	

Buttons: Select-->, <--- Remove, <<--- Clear, MoveDown, MoveUp, Config, ConfigEx, Commit, Cancel



- Configure
- Data Config
- Study Config**
- Trend Lines >
- Montage
- Toolbar
- ✓ Cross Hair
- Zoom >
- Chart Area >
- Print
- Chart History
- Data Manage
- Save Settings
- Load Settings

Study Config

Studies

- Price
- Volume
- Moving Average
- STD
- Momentum
- RSI
- OBV
- VAD
- CMF
- Envelopes
- Bollinger Bands
- CCI
- MACD

Studies in Chart

- Price (Candle)
- VWAP ()
- Moving Average (Expone@20)
- Moving Average (Expone@9)
- Moving Average (Simple@50)
- Moving Average (Simple@200)
- PriceMarker (Y Low,Y High,YY High,YY Low)

Buttons: Select->, <--- Remove, <<--- Clear, MoveDown, MoveUp, Config, ConfigEx, Commit, Cancel

Price Config

Candle

Color

Line Color: [Black]

	Up	Down
Body	<input type="checkbox"/> [White]	<input checked="" type="checkbox"/> [Red]
Border	<input type="checkbox"/> [Black]	<input checked="" type="checkbox"/> [Black]
Upper Wick	<input type="checkbox"/> [Black]	<input checked="" type="checkbox"/> [Black]
Lower Wick	<input type="checkbox"/> [Black]	<input checked="" type="checkbox"/> [Black]

Trade/Order Viewer

- Show Trades
- Show Orders

Accounts: ALL

Buttons: Commit, Cancel

General Config

- Display study info on left top
- Include in scale
- Display latest value on Y axis

Buttons: Commit, Cancel

Keep unchecked!

FB 167.8 -- 167.9 Facebook, Inc. - Class A Common Stock

FB ↑ 168 · 165.82 PCL 167.41 Q

Last 167.9 0.49 (0.29%) Vol 11,907,000

Lvl 167.8 167.9 VWAP: 167.17 S

MMID	BID	SIZE	MMID	ASK	SIZE
ARCA	167.800	10	NSDQ	167.900	2
EDGX	167.800	3	NASD	167.900	2
NASD	167.650	2	NSDQ	167.910	1
NSDQ	167.650	2	ARCA	167.950	1
NSDQ	167.330	5	NSDQ	167.950	0
NSDQ	167.320	1	NSDQ	167.980	1
NSDQ	167.100	2	NSDQ	168.000	269

Montage / INET

LONG at mrkt. limit SELL half SELL all

SHORT at mrkt. limit COVER half COVER all

Accept Sell 200 FB 168 --SMAT--18:21:13--

200 P Display 168 TMP ?

LIMIT Pref DAY+ ANY TRIVANANDREW Trigger

Stop Type Trigger Price

Limit TPrice RPL CAP

SHRT CXL BUY

Previous day close

Anchor for linking window, charts, etc

Stock shortable or not

Hotkeys to buy and sell

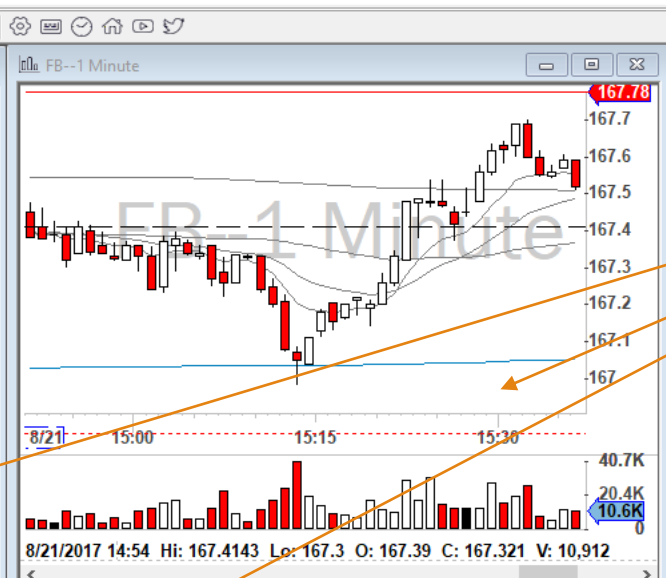
Hotkeys to short sell and cover

Enter share number before making a trade



Top List

NASActive	NASGain	NASLost	LSTActive	LSTGain	LSTLost
DCTH	VERI	CRME	VXX	EBR	NAP
AMD	RTNB	WMIH	BAC	WUBA	VHC
QQQ	CHRS	FRAN	SPY	THC	JKS
INTC	NTLA	LGCY	GE	XCO	UVXY
AAPL	XPLR	DGLY	GDX	LEE	MN
MU	AVXL	FINL	XLF	HLF	JONE
CSCO	ACTG	SPEX	SNAP	CYH	FENG
FALC	CSSE	CHKE	VALE	DWT	NETS
MSFT	JRJC	VBIV	INFY	RUBI	NAT
TVIX	AMSC	WATT	UVXY	FCAU	DNR
JD	AVEO	CSIQ	USO	BHVN	CVRS
CMCSA	ZN	TVIX	F	CDE	KS
NVDA	TRHC	NDSN	EEM	UGAZ	OILU
XIV	IDXG	MBRX	VIPS	DYN	ANW
AMAT	OTIC	EKSO	CHK	RT	FL
OPXAW	SCMP	LGCYO	CPN	BW	UWT
ARCI	CENX	SPWH	FCX	HBM	JMEI
SBUX	ICON	TTNP	FL	TGB	EXPR
FB	MYOK	CRIS	BABA	SCO	DGAZ



FB 167.79 -- 167.9 Facebook, Inc. - Class A Common Stock

Last 167.78 0.37 (0.22%) Vol 11,899,992

Lvl 167.79 167.9 VWAP: 167.17

MMID	BID	SIZE	MMID	ASK	SIZE
ARCA	167.790	5	EDGX	167.900	7
EDGX	167.740	3	NSDQ	167.900	2
NSDQ	167.100	2	NSDQ	167.980	1

Accept Sell 200 FB 168 --SMAT--18:21:13--

200 P Display 168 TMP ? NR PD

LIMIT Pref DAY+ ANY TRVANANDREW Trigger

Stop Type Trigger Price

Limit TPrice RPL CAP

SHRT CXL BUY

Market Clock

08/21/17 18:22:03

TEST

Account	Type	Realized	Unrealized	Equity	BP
TRVANANDREW	Margin(Demo)	0.00	-22.00	25000.00	66420.00

Symb	Account	Shares	Avgcost	Realized	Unrealized	Type
FB	TRVANANDREW	200	167.9	0.00	-22.00	Margin

X	Status	Symb	Side	Qty	Price	Route	Type	Account
X	Accepted	FB	S	200	168	SMAT	L	TRVANANDREW

Market View

Symbol	% Change	Last	Volume	Company Name
INDUS	0.13	21703.75	277,876,084	DOW JONES 3
SPX\$	0.12	2428.37		S&P 500
COMP\$	-0.05	6213.13		NASDAQ Com
MSFT	-0.46	72.16	17,713,820	Microsoft Corp
GOOG	-0.44	906.66	942,936	Alphabet Inc. -
FB	0.22	167.78	11,899,992	Facebook, Inc.
AAOI	-4.5	61.2	3,113,398	Applied Optoe
AAPL	-0.22	157.16	26,342,767	Apple Inc. - Co
TEVA	-1.4	17.06	11,707,251	Teva Pharmace
BABA	1	169.17	22,322,025	Alibaba Group I
LITE	-1.7	51.1	1,436,030	Lumentum Hold
FL	-7.1	31.95	23,086,781	Foot Locker, In



Price	Qty	Exch
167.78	92	FADF
167.78	8	FADF
167.85	30	FADF
167.78		FADF
167.83	158	ARCA
167.85	120	FADF
167.85	80	FADF
167.85	200	EDGX
167.85	20	EDGX
167.9	1	NASD
167.9	1	FADF
167.79	150	FADF
167.9	30	FADF
167.79	210	FADF
167.9	150	NASD
167.9	1	NASD
167.9	164	FADF
167.9	6	NASD
167.9	230	FADF
167.9	325	FADF
167.9	1	NASD
167.9	577	FADF
167.89	29	FADF
167.85	8	FADF
167.85	2	FADF
167.9	1	ARCA

Trade Log

Event	B/S	Symb	Shares	Price	Route	Time	Account	Note
Accept	Sell	FB	200	168	SMAT	18:2...	TRVAN...	
Sending	Sell	FB	200	168	SMAT	18:2...	TRVAN...	
Execute	Buy	FB	200	167.9	SMAT	18:2...	TRVAN...	
Accept	Buy	FB	200	168	SMAT	18:2...	TRVAN...	
Sending	Buy	FB	200	168	SMAT	18:2...	TRVAN...	

Closed Positions P&L

Symb	Realized	Type	Company Name	Account
FB	0.00	Margin	Facebook, Inc. - Class A C...	TRVANANDREW
Summary	0.00			

Account	Type	Realized	Unrealized	Equity	BP
TRVANANDREW	Margin(Demo)	0.00	-20.00	25000.00	66420.0

Account summary (will resent to 25K every day)

Symb	Account	Shares	Avgcost	Realized	Unrealized	Type
FB	TRVANANDREW	200	167.9	0.00	-20.00	Margin

Open positions

X	Status	Symb	Side	Qty	Price	Route	Type	Account
X	Accepted	FB	S	200	168	SMAT	L	TRVANANDREW

L: limit
M: market
SM: stop market
RG: range

Open orders (not filled): profit target, stop loss etc

Event	B/S	Symb	Shares	Price	Route	Time	Account	Note
Accept	Sell	FB	200	168	SMAT	18:2...	TRVAN...	
Sending	Sell	FB	200	168	SMAT	18:2...	TRVAN...	
Execute	Buy	FB	200	167.9	SMAT	18:2...	TRVAN...	
Accept	Buy	FB	200	168	SMAT	18:2...	TRVAN...	
Sending	Buy	FB	200	168	SMAT	18:2...	TRVAN...	

Trade Log

Must be below 200 ms
Check your ping speed
online

Symb	Realized	Type	Company Name	Account
FB	0.00	Margin	Facebook, Inc. - Class A C...	TRVANANDREW
Summary	0.00			

Closed P&L

Server	Status	IP/Address	Port	Avg Recv Speed	Max Recv Speed	Connect Time	Network Delay
OrderServer	Connected	demo.dastrader.net	7500	49 Bytes/Sec	176.150 KB/Sec	5hour 38min	67.7326 ms
QuoteServer1	Connected	207.251.85.56	9510	17 Bytes/Sec	33.112 KB/Sec	5hour 38min	67.8847 ms
QuoteServer2				0 Bytes/Sec	0 Bytes/Sec	0sec	
QS 0				0 Bytes/Sec	0 Bytes/Sec	0sec	
QS 1				0 Bytes/Sec	0 Bytes/Sec	0sec	

Note: 1 Byte will be around 10 bits
1 KB=1024 Bytes; 1 MB=1024 KB
1 Second =1000 Milliseconds

Connectivity check

What to learn from simulated trading

- **Find the best strategies for yourself.**
 - Tweak my strategies as needed. Find the best suited to yourself.
 - Strategies might also not work over time. Learn to develop new ones.
- **Play around with Hotkeys and indicators**
- **YOU MUST become independent**
 - Eventually you want to be independent in finding stocks in play, and trading.

Next steps

At the end of 3 months, you should be able to make a decision to:

Am I confident enough to go live? If not, continue the simulation.

If yes, start with small size. Trade only 100 shares or even smaller.

- Pay attention to your feelings and try to be aware of emotional decisions.
- Do not look at your unrealized P&L.

If necessary after few live trades, switch to simulator again.

You can increase your size slowly. **BABY STEPS!!**

- 2 weeks 100 shares
- 2 weeks 200 shares
- 2 weeks 400 shares....



Same thing but different risk,
are they really the same?



Trade in a real account



www.alamy.com - EGP95J

Trade in a simulator

Good luck!

(although you do not need luck for trading,
just hard work and determination)