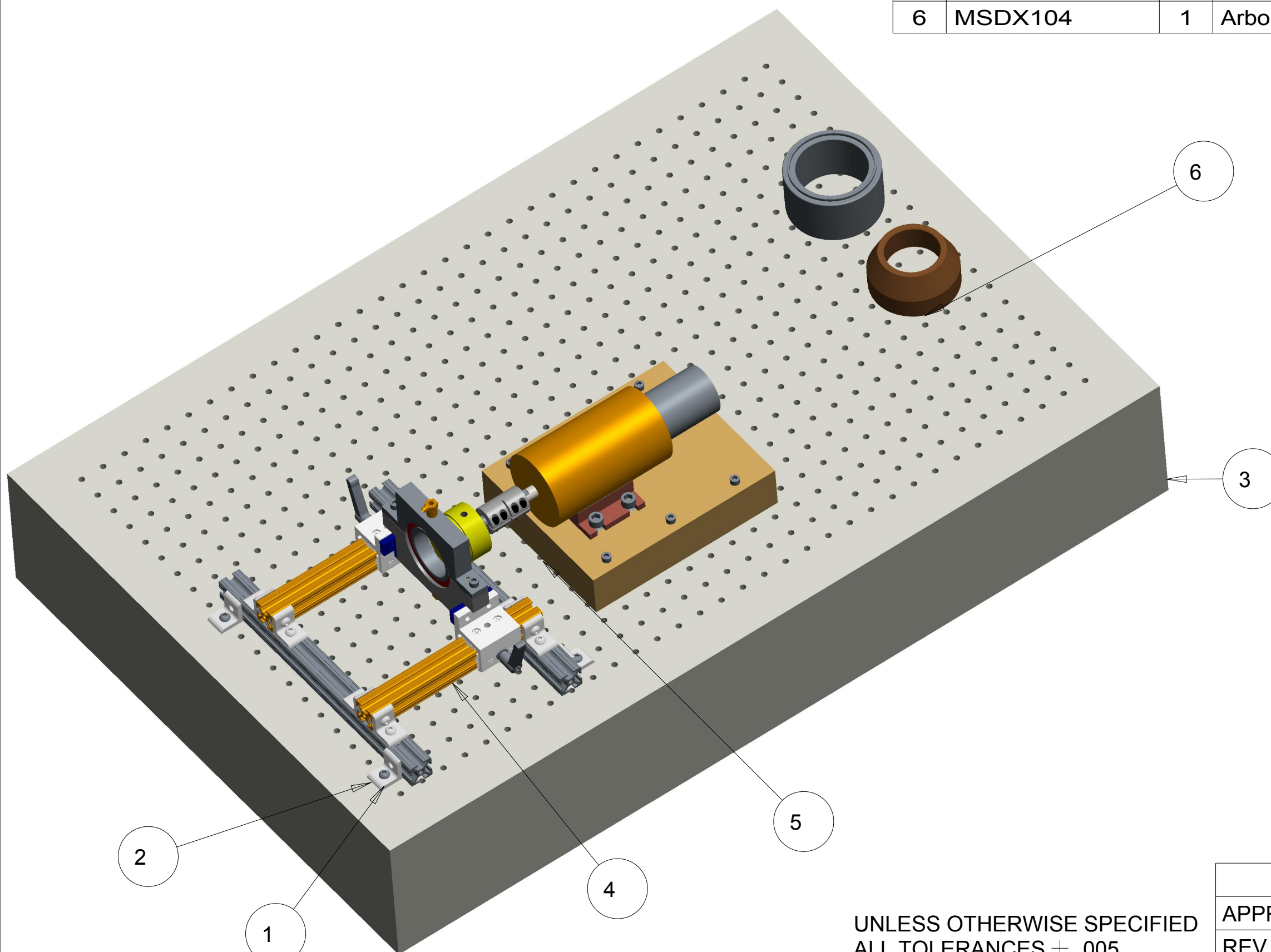


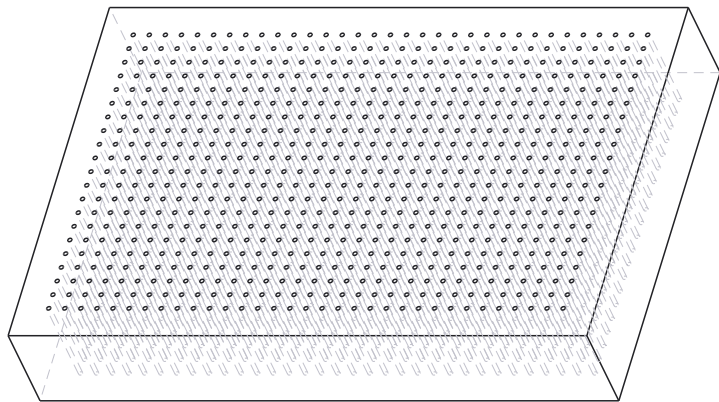
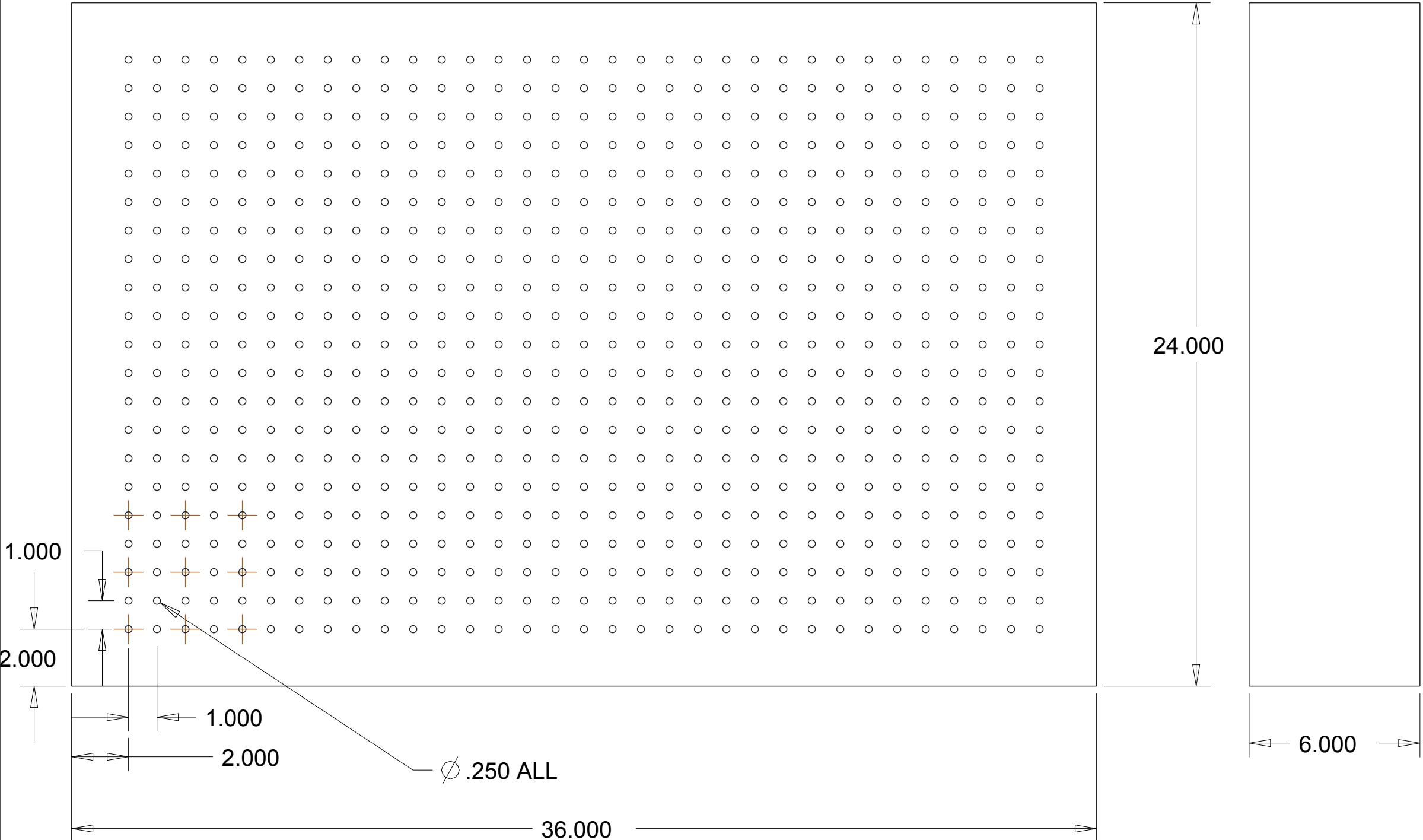
ITEM NO	PART NUMBER	QTY	DESCRIPTION	NOTES
1	3690	16	Mounting Hardware - L Brackets	
2	4119	8		
3	MSDX002	1	Base Plate	
4	MSDX102	1	Lower Mount Assembly	
5	MSDX103	1	Motor Assembly	
6	MSDX104	1	Arbor Press Assembly	



UNLESS OTHERWISE SPECIFIED
ALL TOLERANCES $\pm .005$

Bearing Health Test Fixture		
APPROVED BY: P13505		
REV. A.0	5/1/13	MSDX101

REV.	DESCRIPTON	PART NUMBER	DATE	APPROVED
A.0	BASE PLATE	MSDX002	5/1/13	P13505

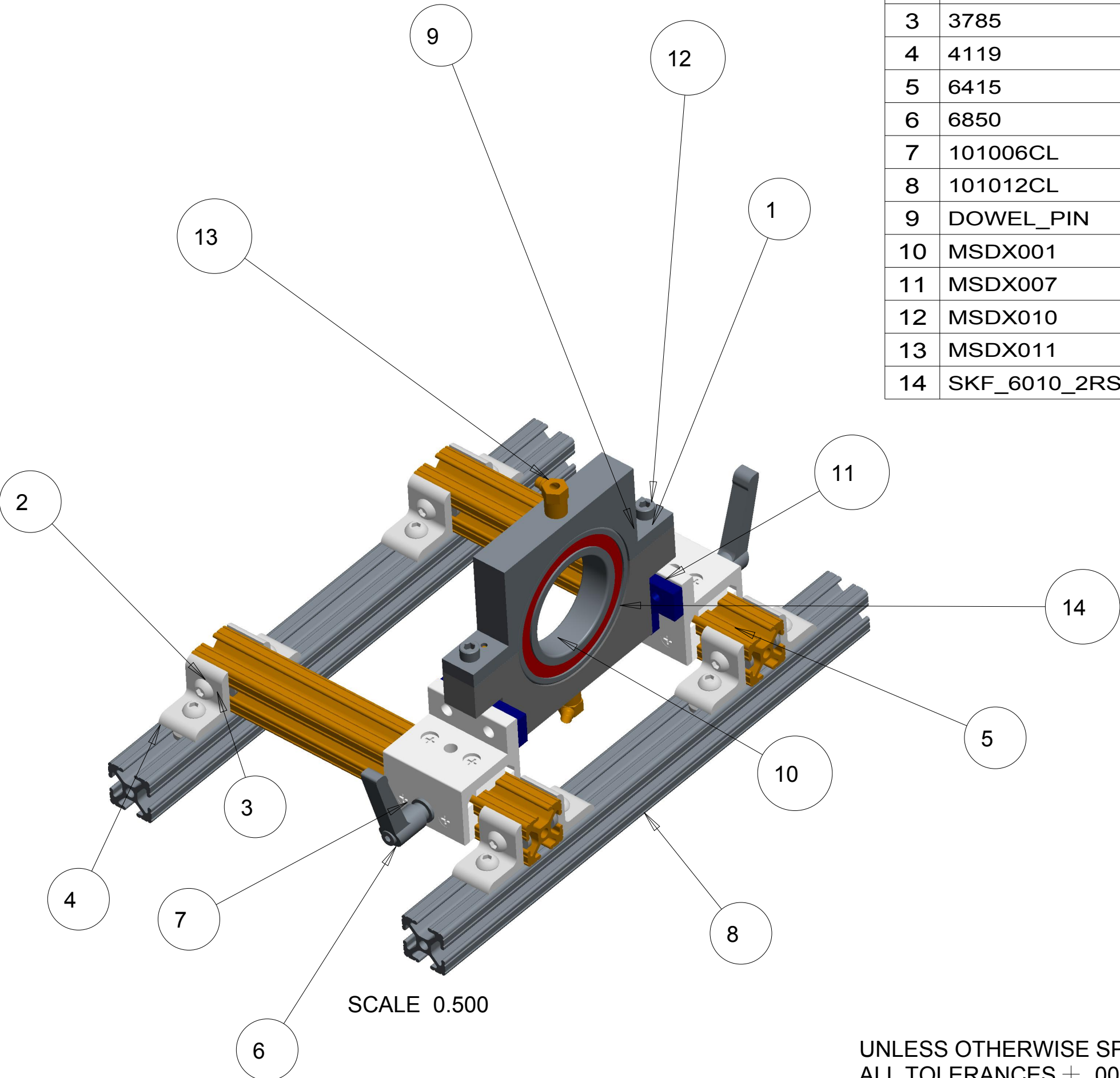


SCALE 0.250

UNLESS OTHERWISE SPECIFIED
ALL TOLERANCES $\pm .005$

Base Plate			
APPROVED BY: P13505			
REV. A.0	5/1/13	MSDX002	

ITEM NO	PART NUMBER	QTY	DESCRIPTION	NOTES
1	1/4" - 20 SHCS	2	Socket Head Cap Screw for Clamp	
2	3690	16		80/20 Part
3	3785	12		80/20 Part
4	4119	8		80/20 Part
5	6415	2		80/20 Part
6	6850	2		80/20 Part
7	101006CL	2	101006cl.prt	80/20 Part
8	101012CL	2		80/20 Part
9	DOWEL_PIN	2		McMasterr Part
10	MSDX001	1	Lower Bearing Carrier	
11	MSDX007	2	Adapter Flange	
12	MSDX010	1	Top Bearing Carrier	
13	MSDX011	2	Accelerometer	Purchased
14	SKF_6010_2RS1	1	6010 Bearing for XEROX	Test Bearing

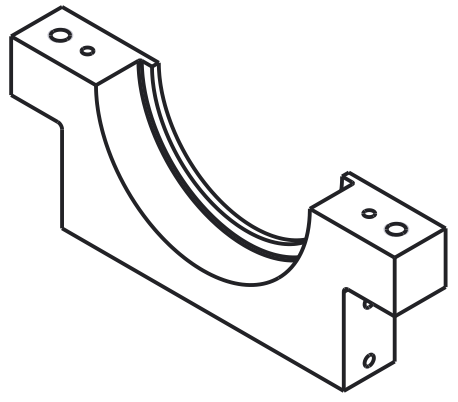
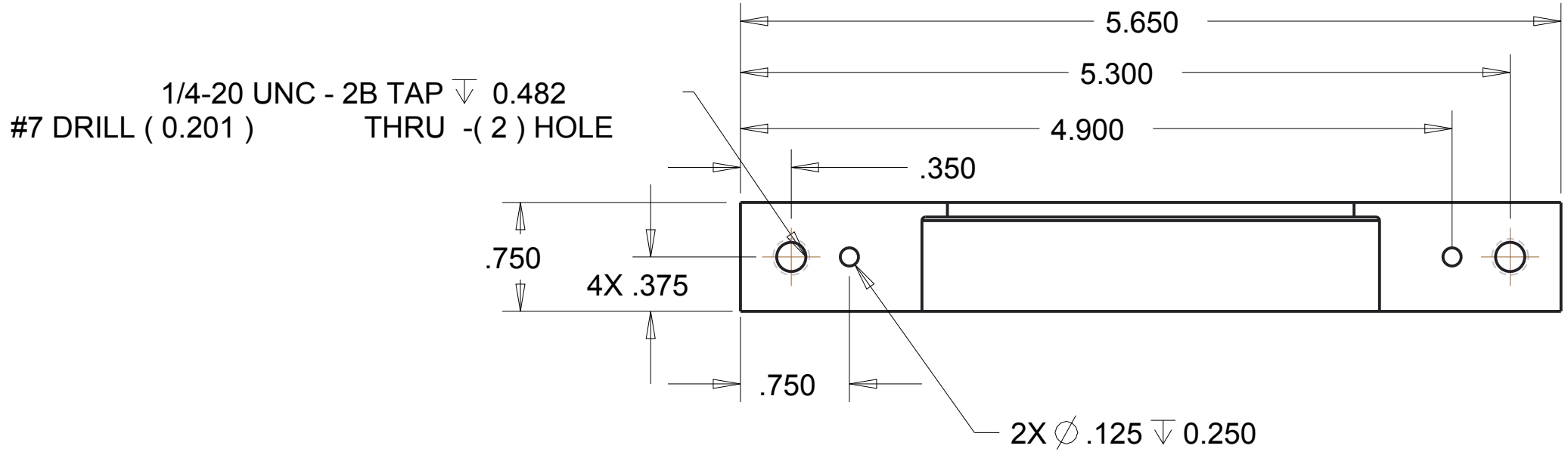


SCALE 0.500

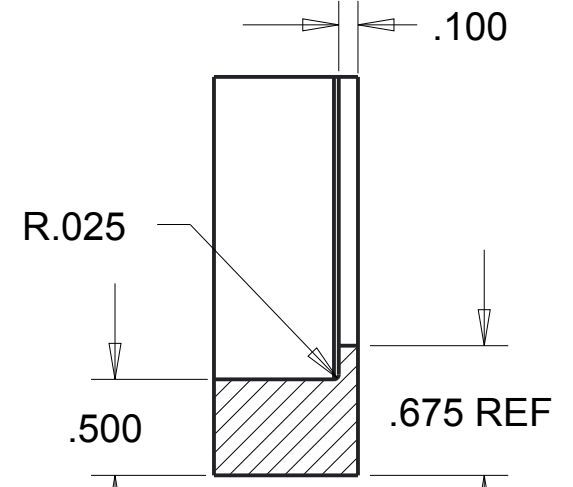
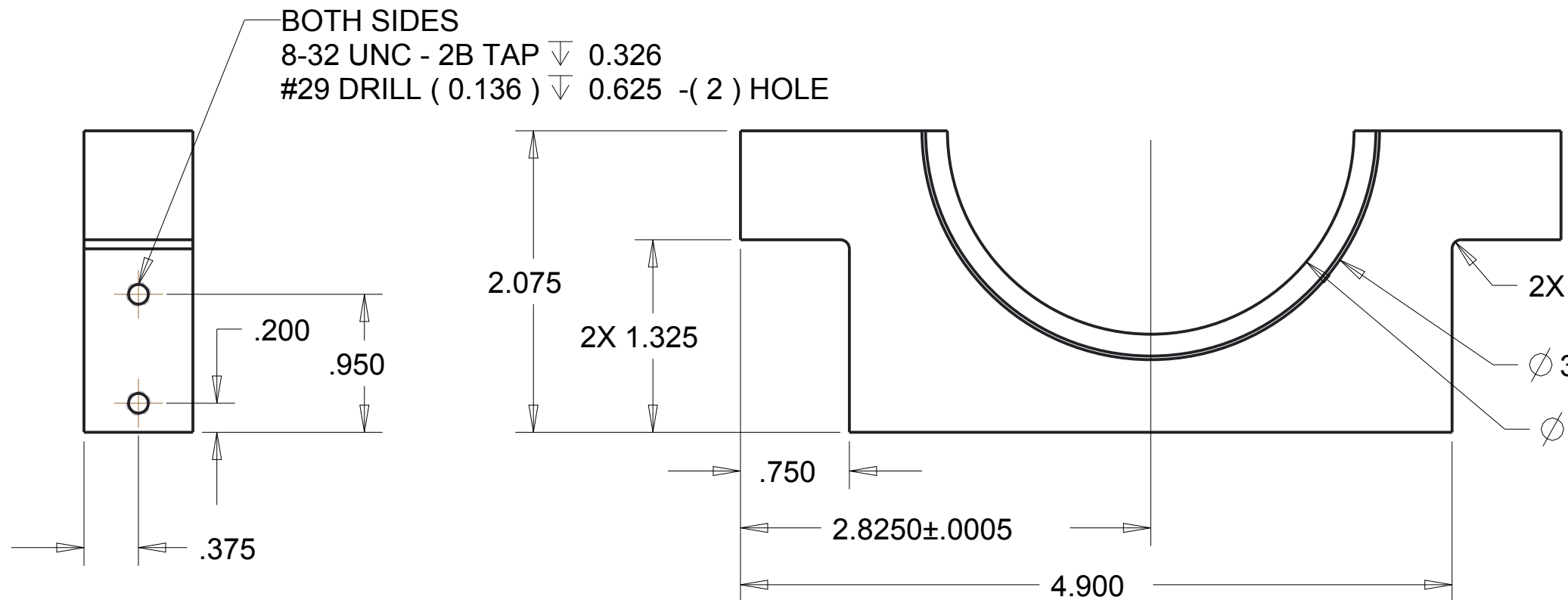
UNLESS OTHERWISE SPECIFIED
ALL TOLERANCES \pm .005

Lower Mount Assembly		
APPROVED BY: P13505		
REV. A.0	5/1/13	MSDX102

REV.	DESCRIPTON	PART NUMBER	DATE	APPROVED



SCALE 0.500



SECTION HALF-HALF

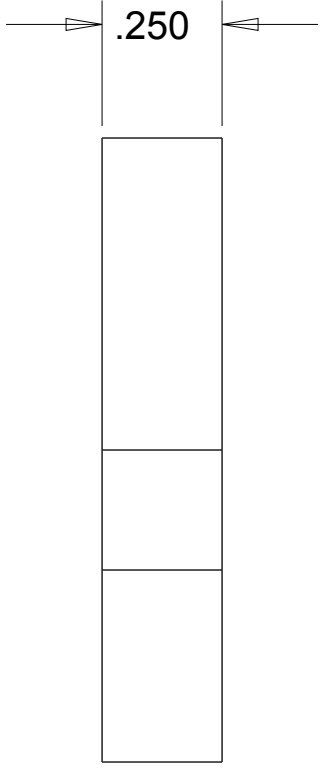
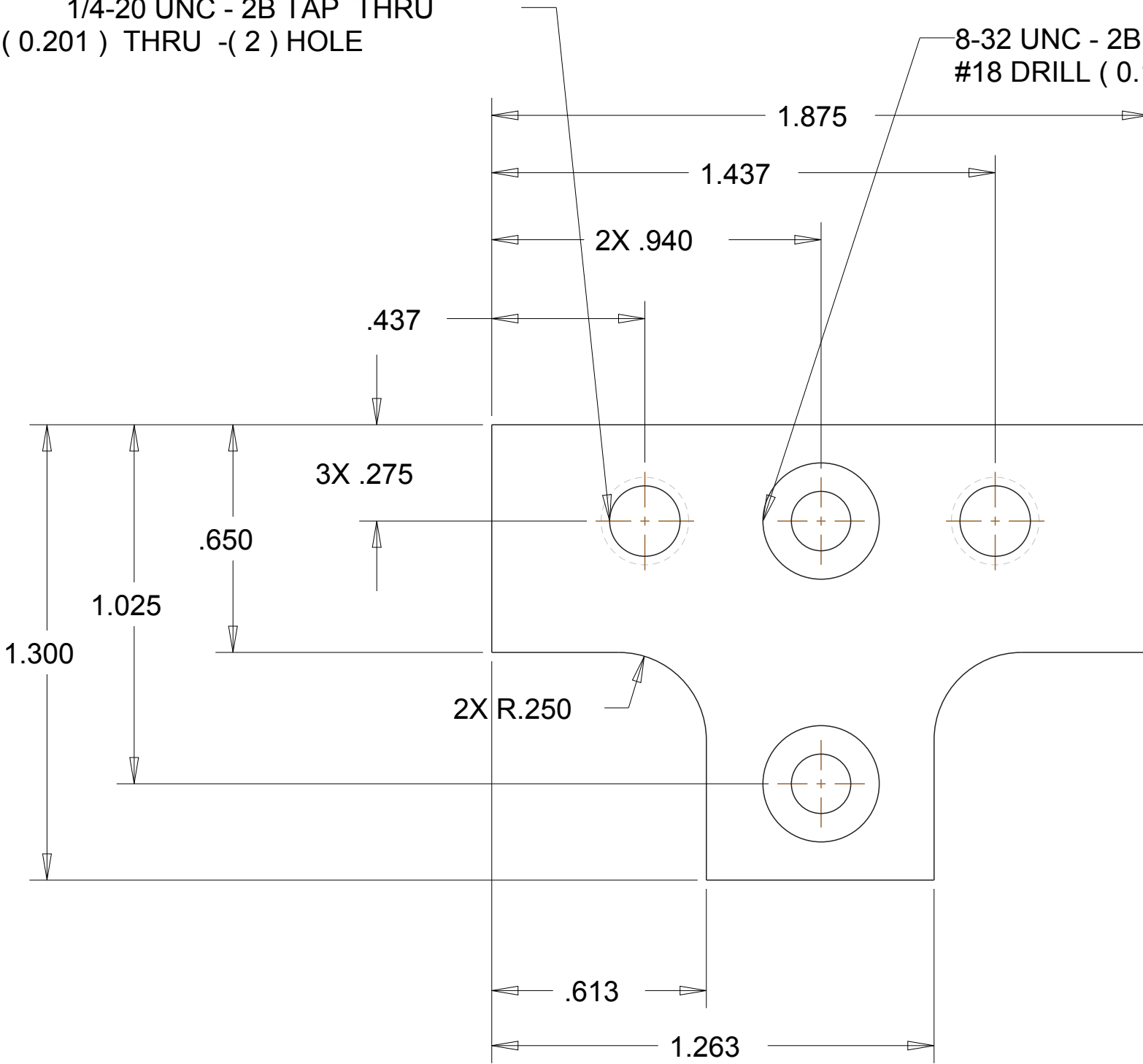
BREAK ALL EDGES
 UNLESS OTHERWISE SPECIFIED
 ALL TOLERANCES \pm .005

LOWER BEARING CLAMP HALF		
APPROVED BY:		
REV.	DATE	MSDX001

REV.	DESCRIPTON	PART NUMBER	DATE	APPROVED
A.0	ADAPTER FOR MOUNT	MSDX007	2/5/13	P13505

1/4-20 UNC - 2B TAP THRU
#7 DRILL (0.201) THRU -(2) HOLE

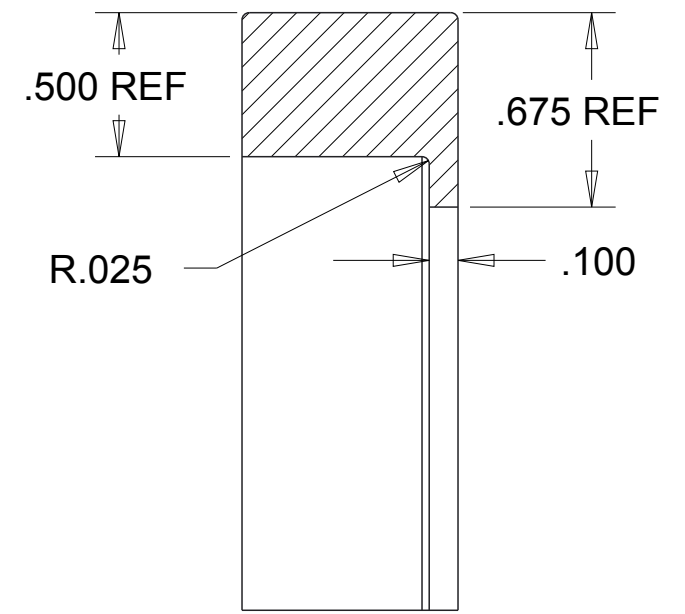
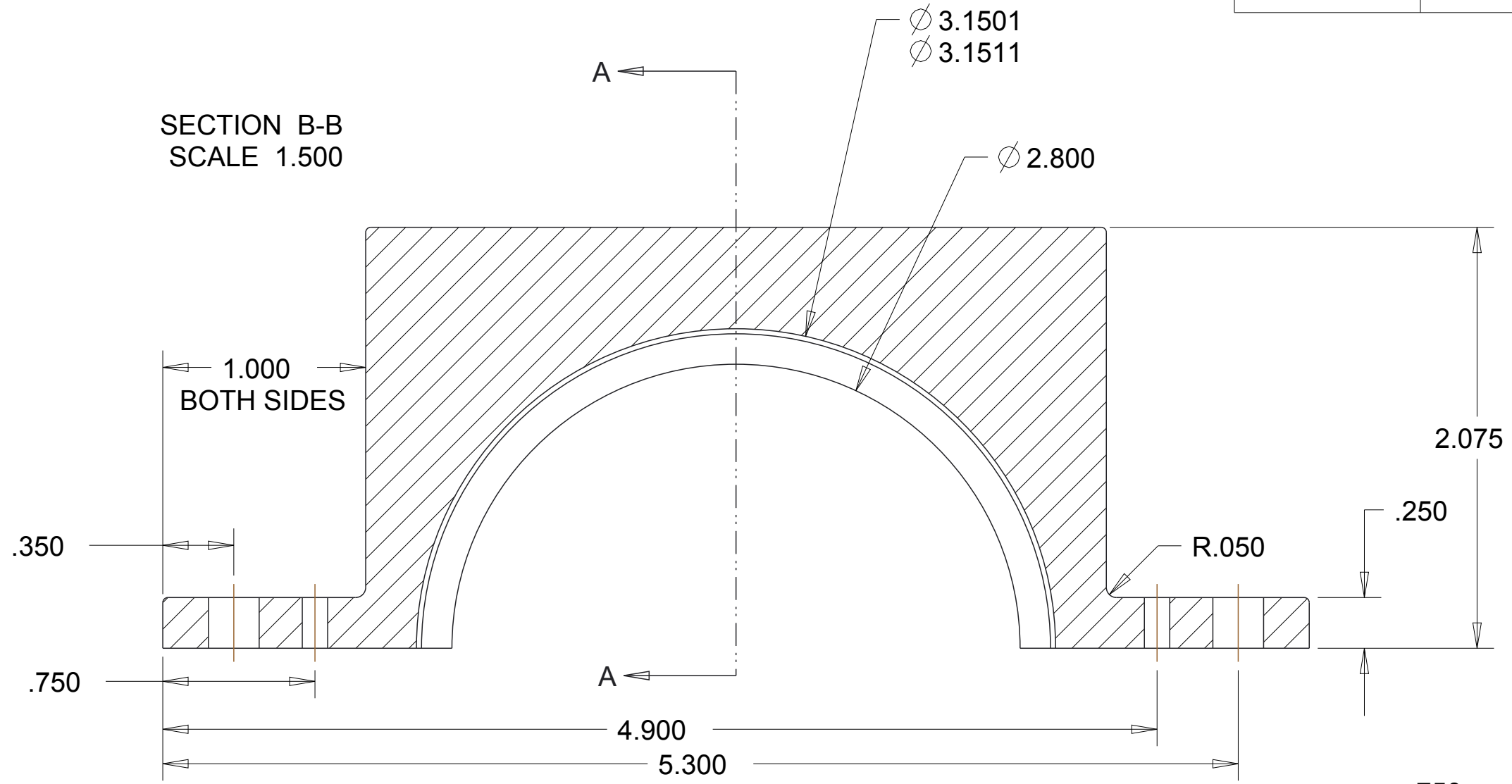
8-32 UNC - 2B CLEAR
#18 DRILL (0.170) THRU -(2) HOLE



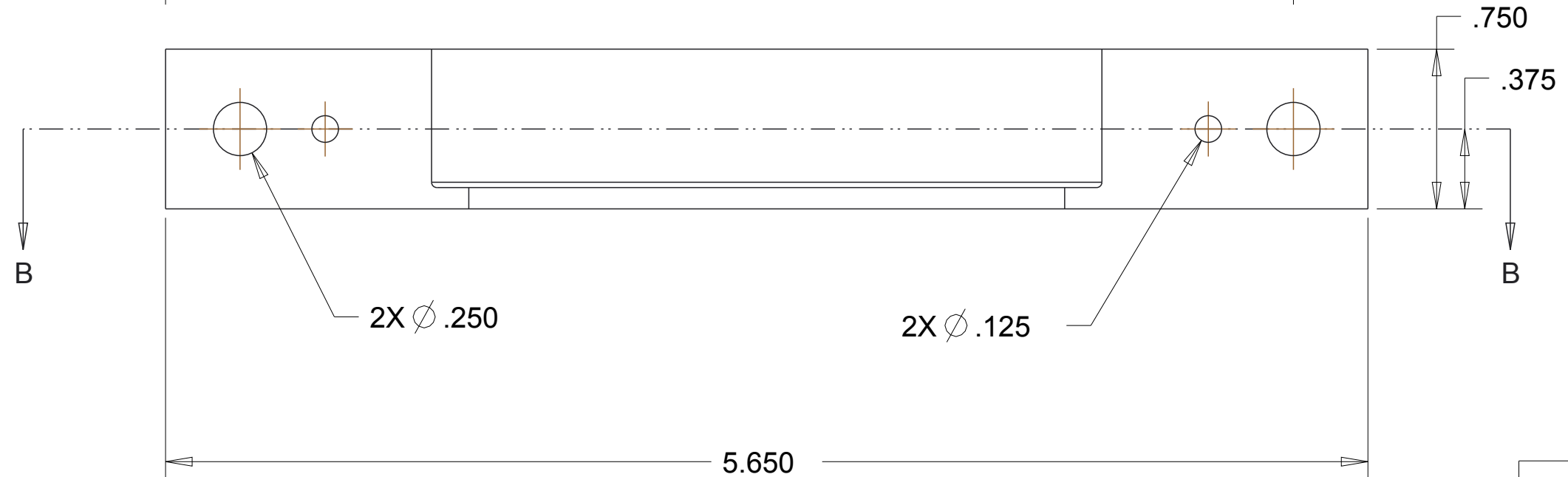
UNLESS OTHERWISE SPECIFIED
ALL TOLERANCES $\pm .005$

RAIL ADAPTER			
APPROVED BY: P13505			
REV. A.0	2/5/13	MSDX007	

REV.	DESCRIPTION	PART NUMBER	DATE	APPROVED
A	DIMENSIONED	MSDX010	2/18/13	K. ALBINO



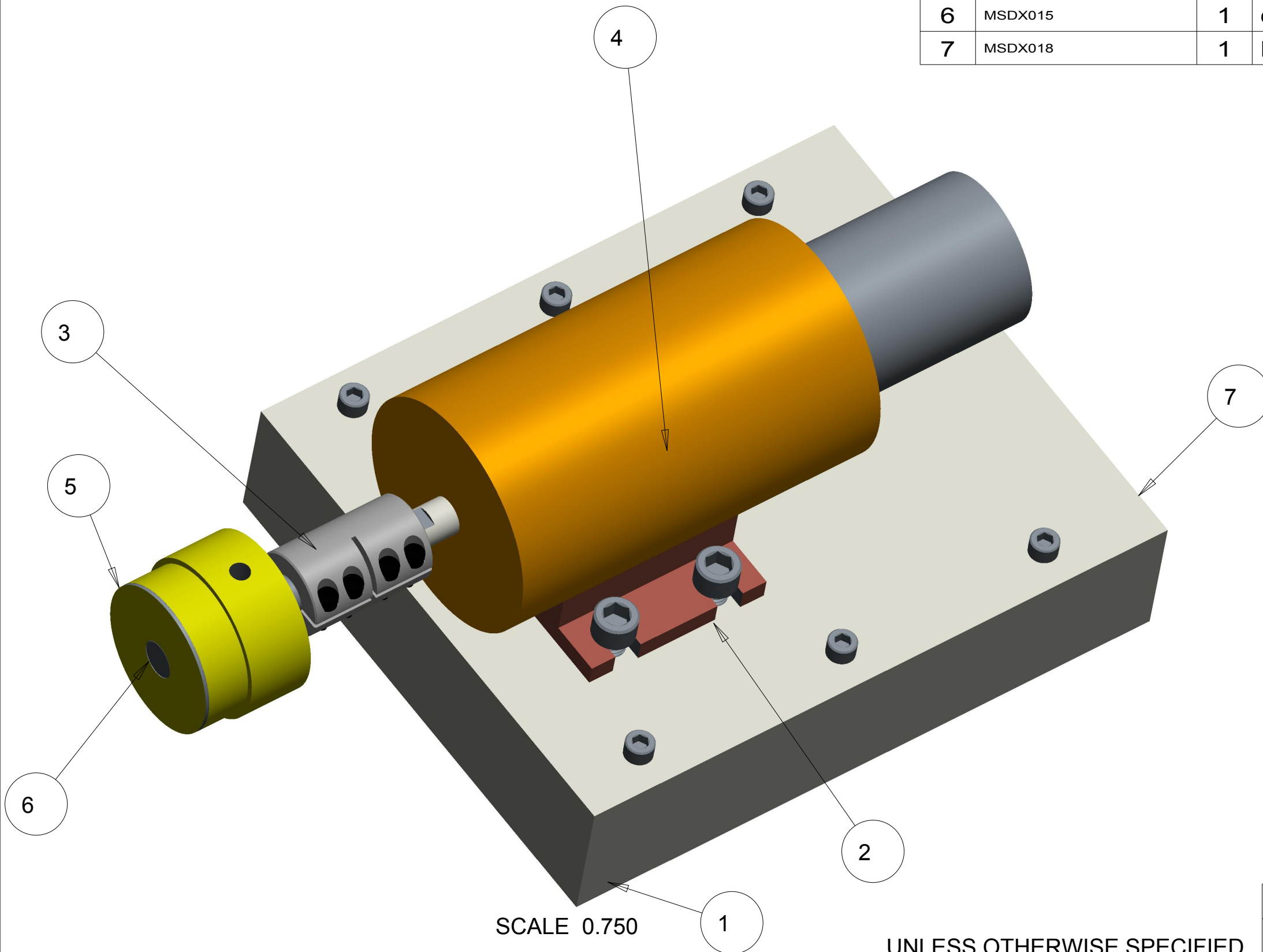
SECTION A-A



UNLESS OTHERWISE SPECIFIED
ALL TOLERANCES $\pm .005$

TOP BEARING CARRIER			
APPROVED BY: K.ALBINO			
REV. A	2/18/13	MSDX010	

ITEM NO	PART NUMBER	QTY	DESCRIPTION	NOTES
1	1/4" - 20 x 2.5" SHCS	6	Cap Screw for Base Block	McMaster Part
2	3_8-16_5_8	4		McMaster Part
3	CLX-8-8-F	1		Grainger Part
4	MSDX003	1	motor_bill.prt	Provided
5	MSDX014	1	mandrel.prt	
6	MSDX015	1	drive_shaft.prt	
7	MSDX018	1	Motor Mounting Block	

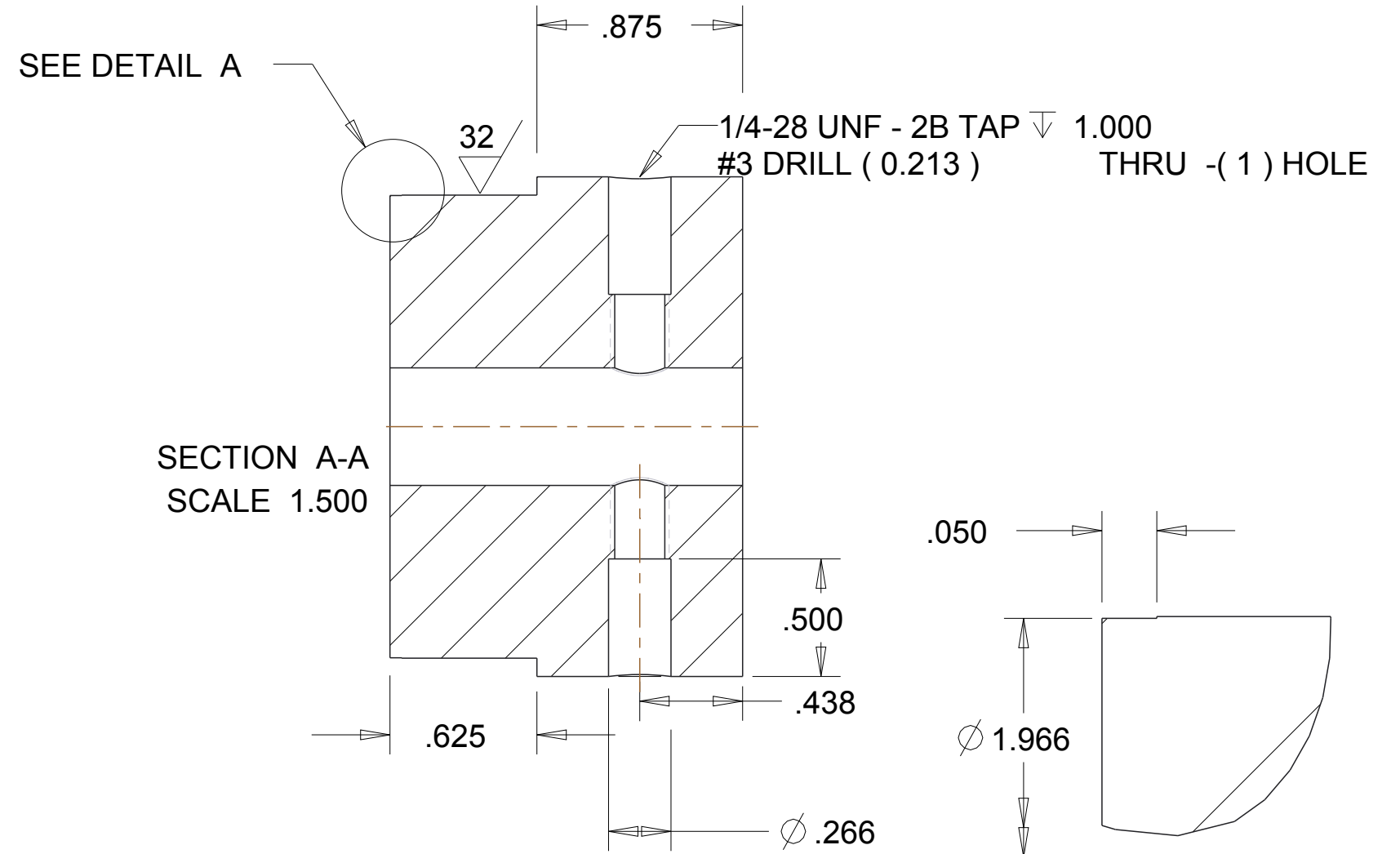
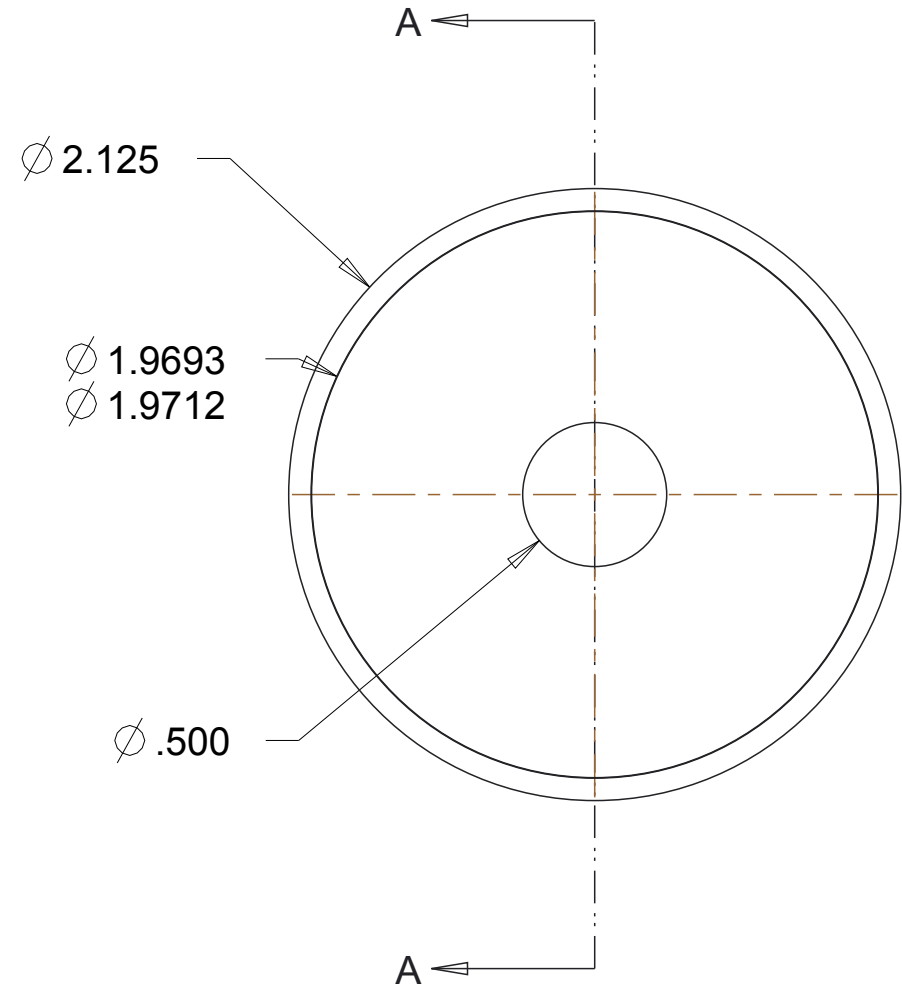
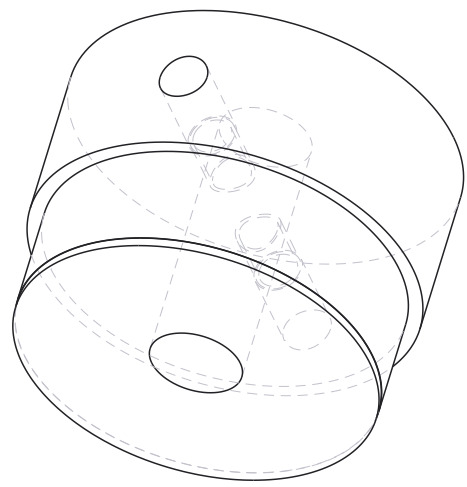


SCALE 0.750

UNLESS OTHERWISE SPECIFIED
ALL TOLERANCES \pm .005

Motor Assembly		
APPROVED BY: P13505		
REV. A.0	5/1/13	MSDX103

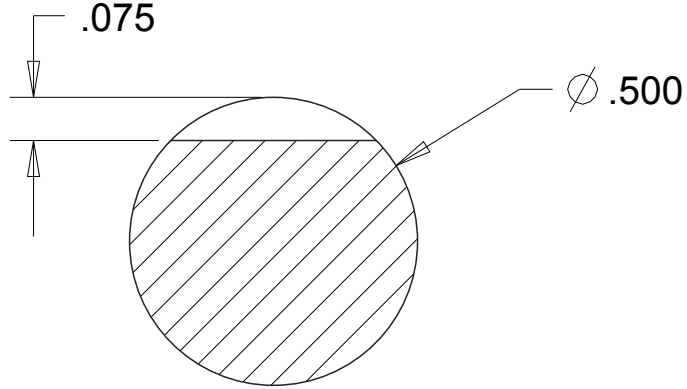
REV.	DESCRIPTION	PART NUMBER	DATE	APPROVED
A.0	CLEANED UP DIM	MSDX014	2/8/13	P13505
A.1	CLEARANCE TIP	MSDX014	5/1/13	P13505



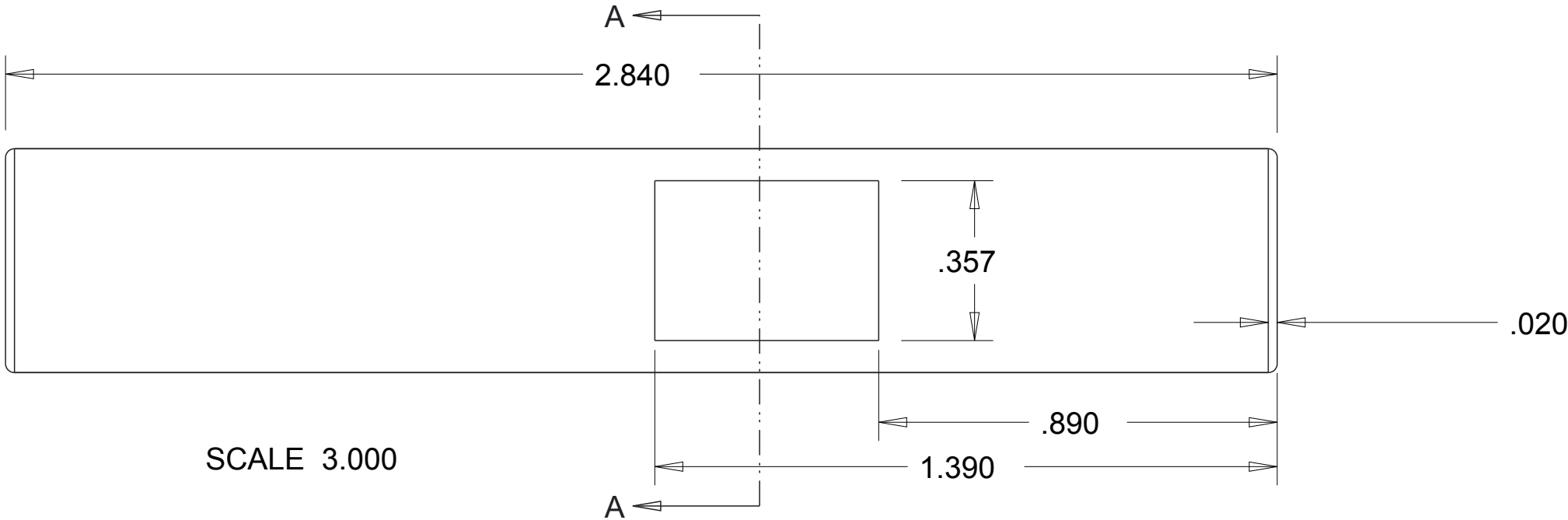
UNLESS OTHERWISE SPECIFIED
ALL TOLERANCES \pm .005

Press Fit Mandrel			
APPROVED BY: P13505			
REV. A.1	5/1/13	MSDX014	

REV.	DESCRIPTON	PART NUMBER	DATE	APPROVED
A.0	DRIVE SHAFT	MSDX015	5/1/13	P13505



SECTION A-A
SCALE 3.000



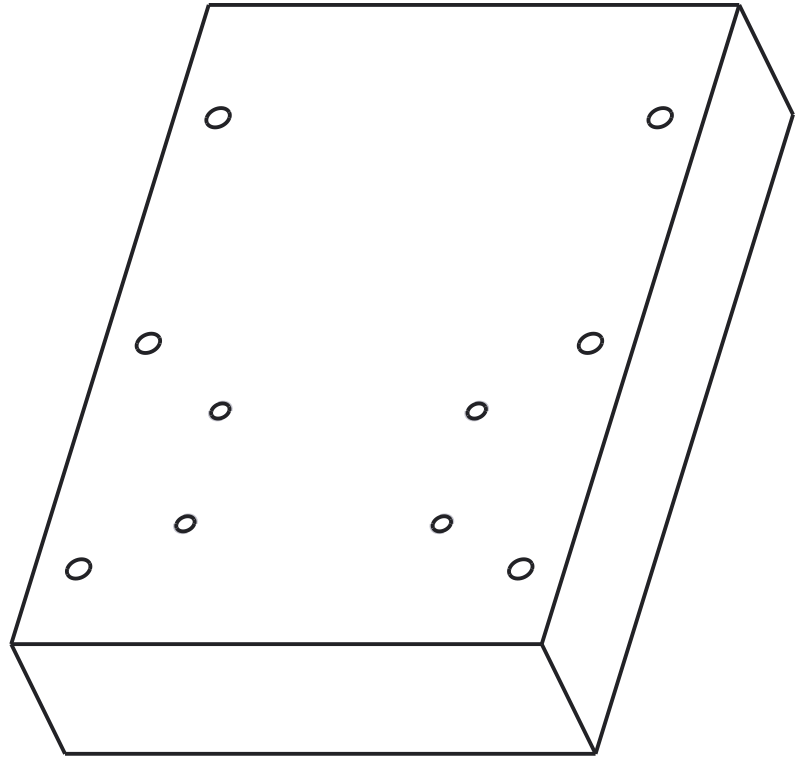
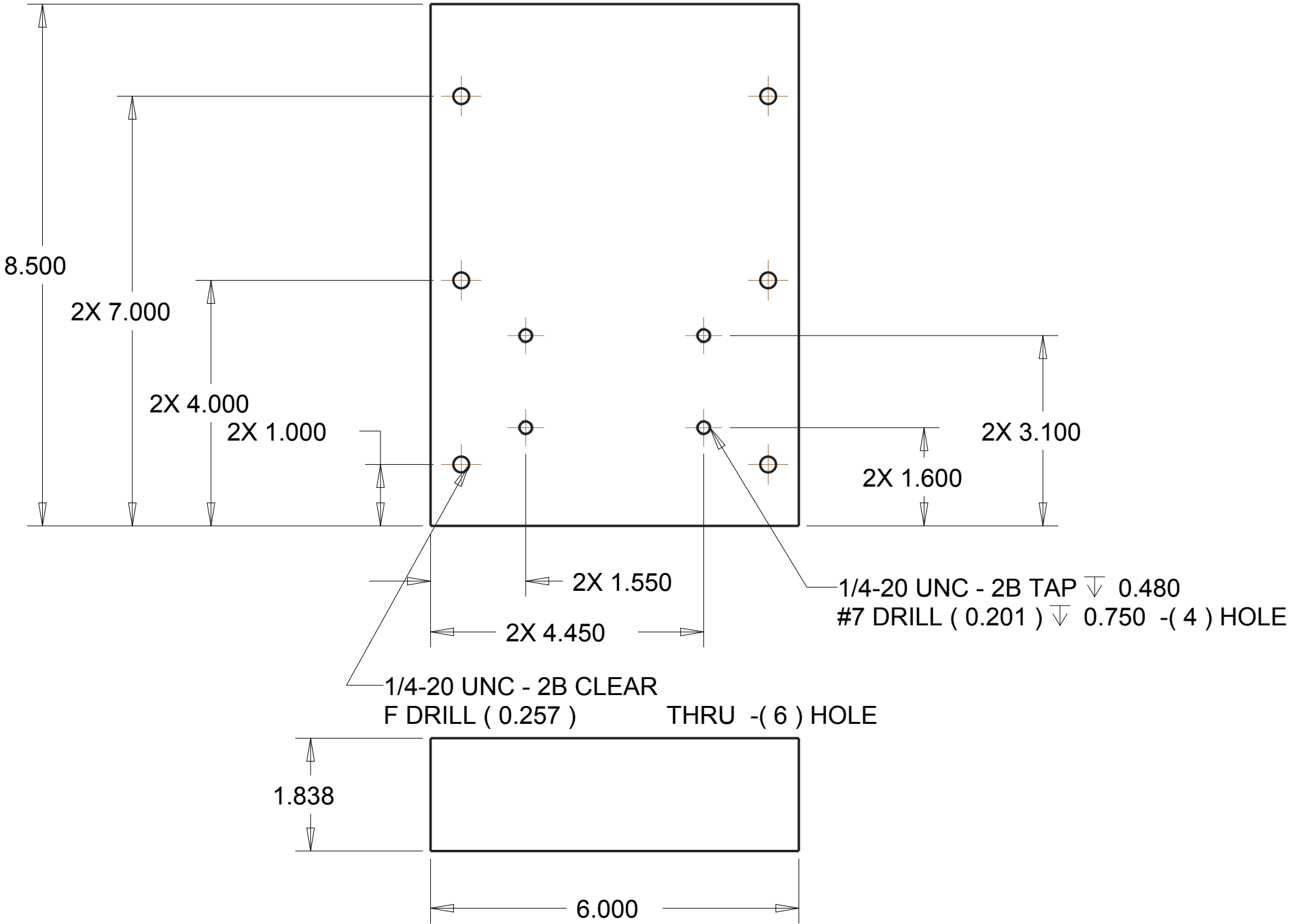
SCALE 3.000

BREAK ALL EDGES

UNLESS OTHERWISE SPECIFIED
ALL TOLERANCES $\pm .005$

Drive Shaft		
APPROVED BY: P13505		
REV. A.0	5/1/13	MSDX015

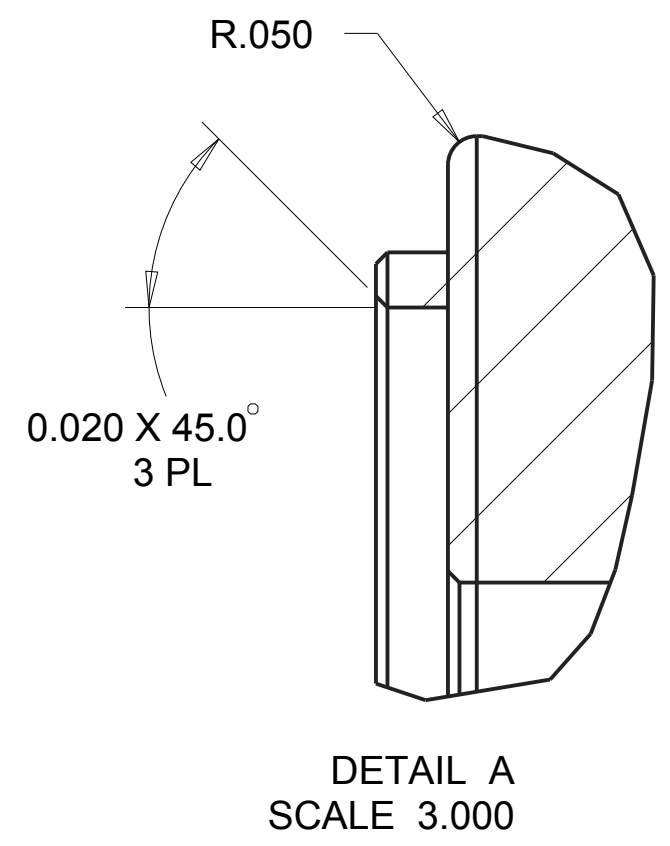
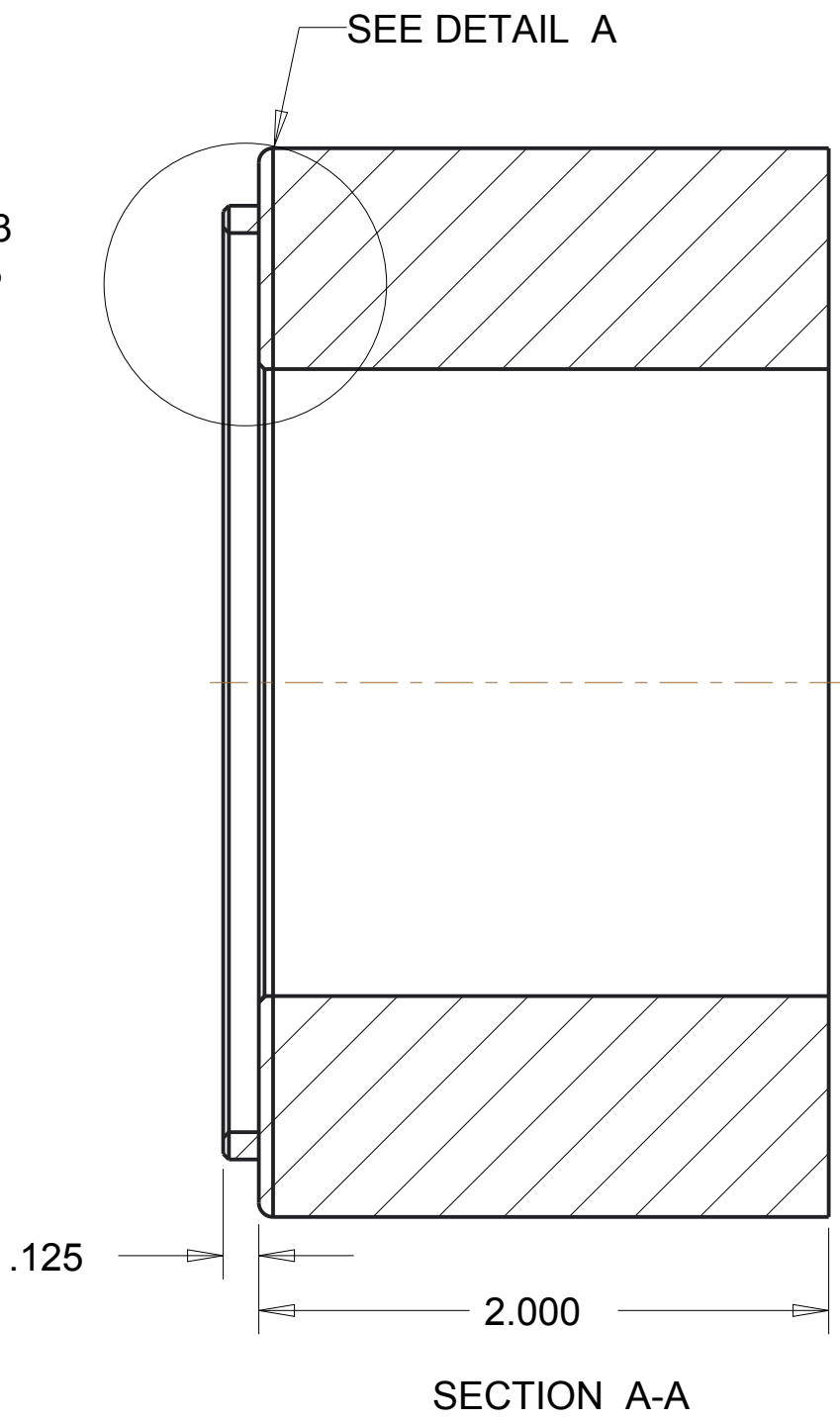
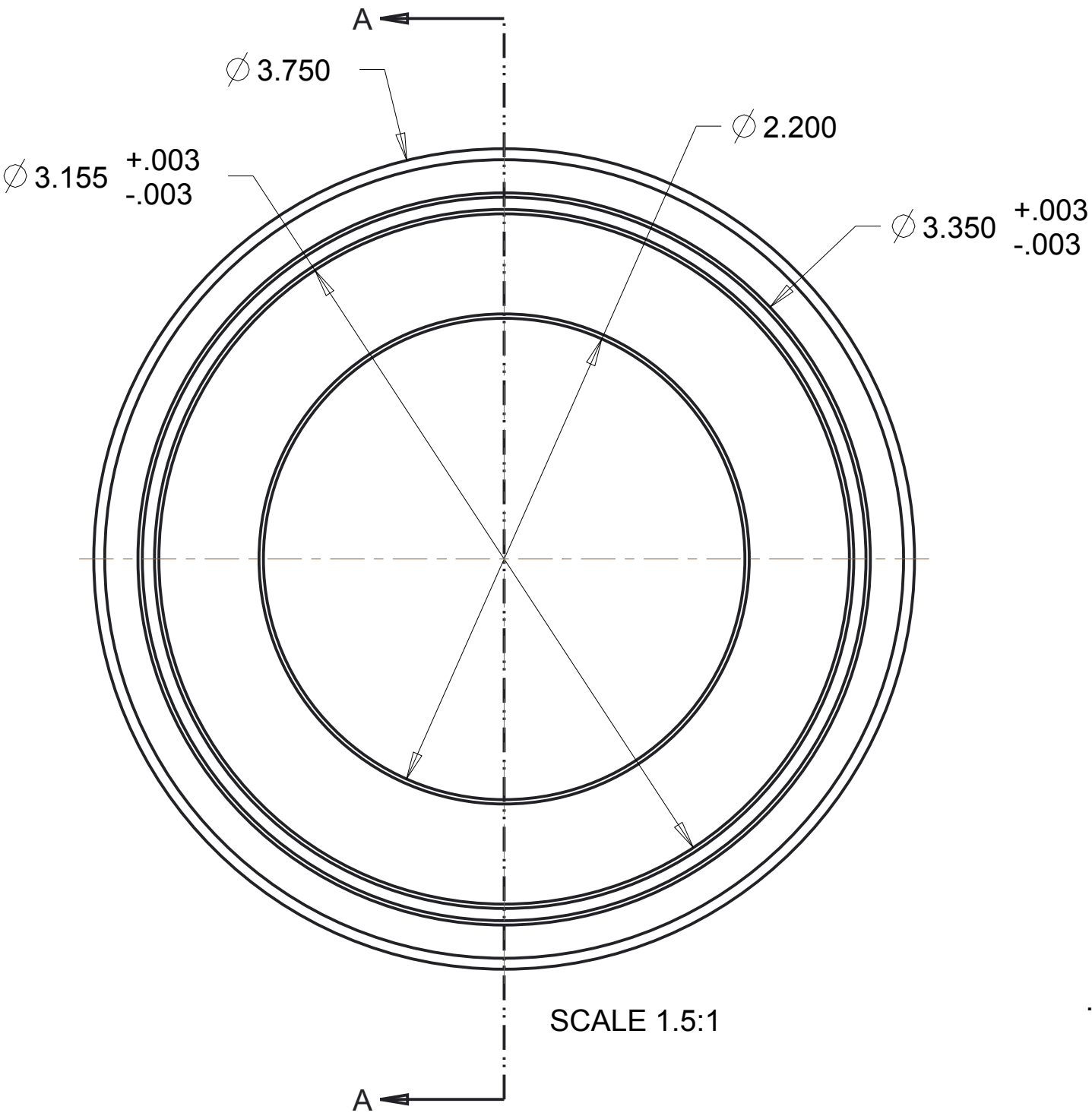
REV.	DESCRIPTON	PART NUMBER	DATE	APPROVED



UNLESS OTHERWISE SPECIFIED
ALL TOLERANCES \pm .005

MOTOR MOUNT		
APPROVED BY:		
REV.	2-8-13	MSDX018

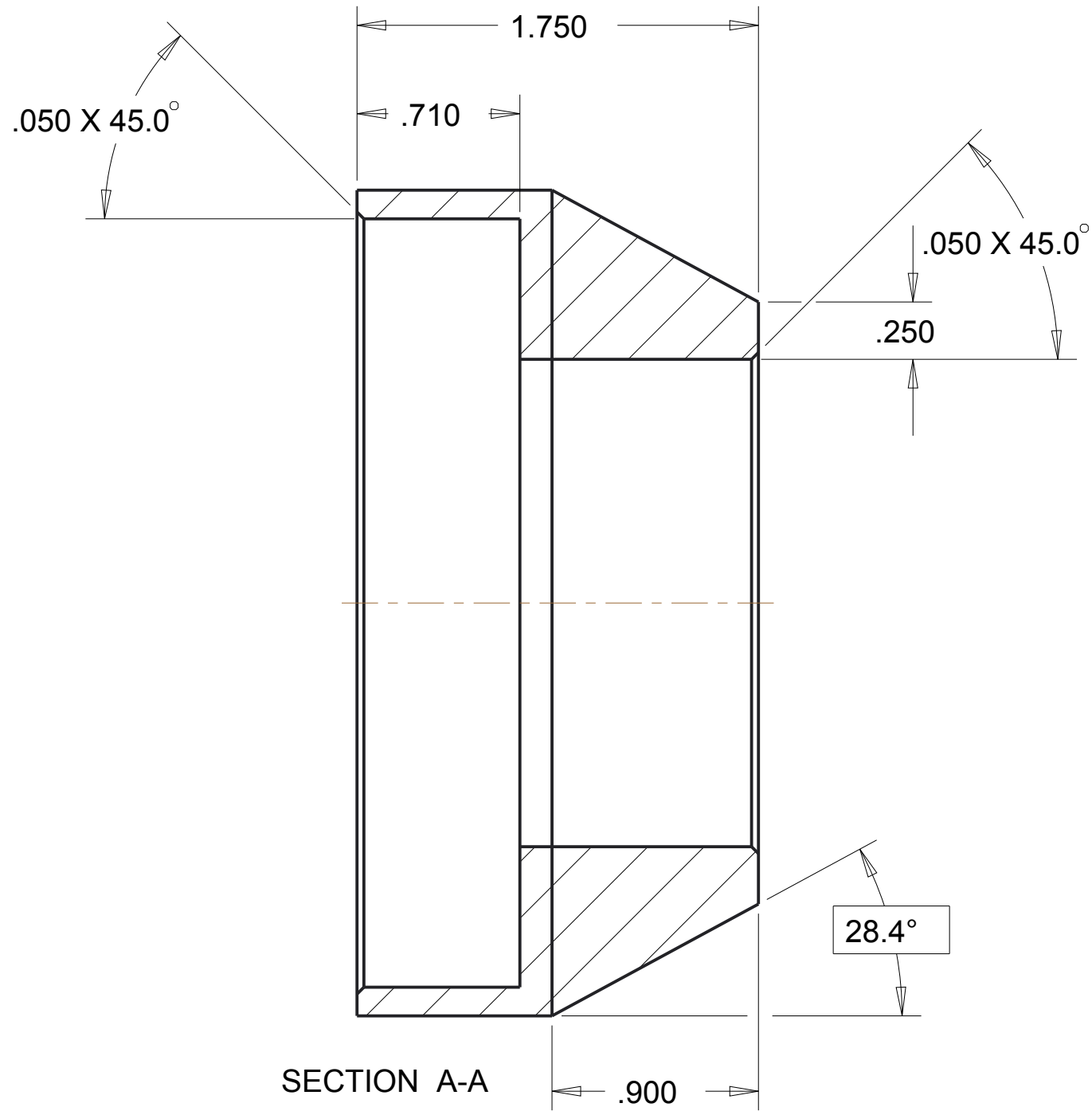
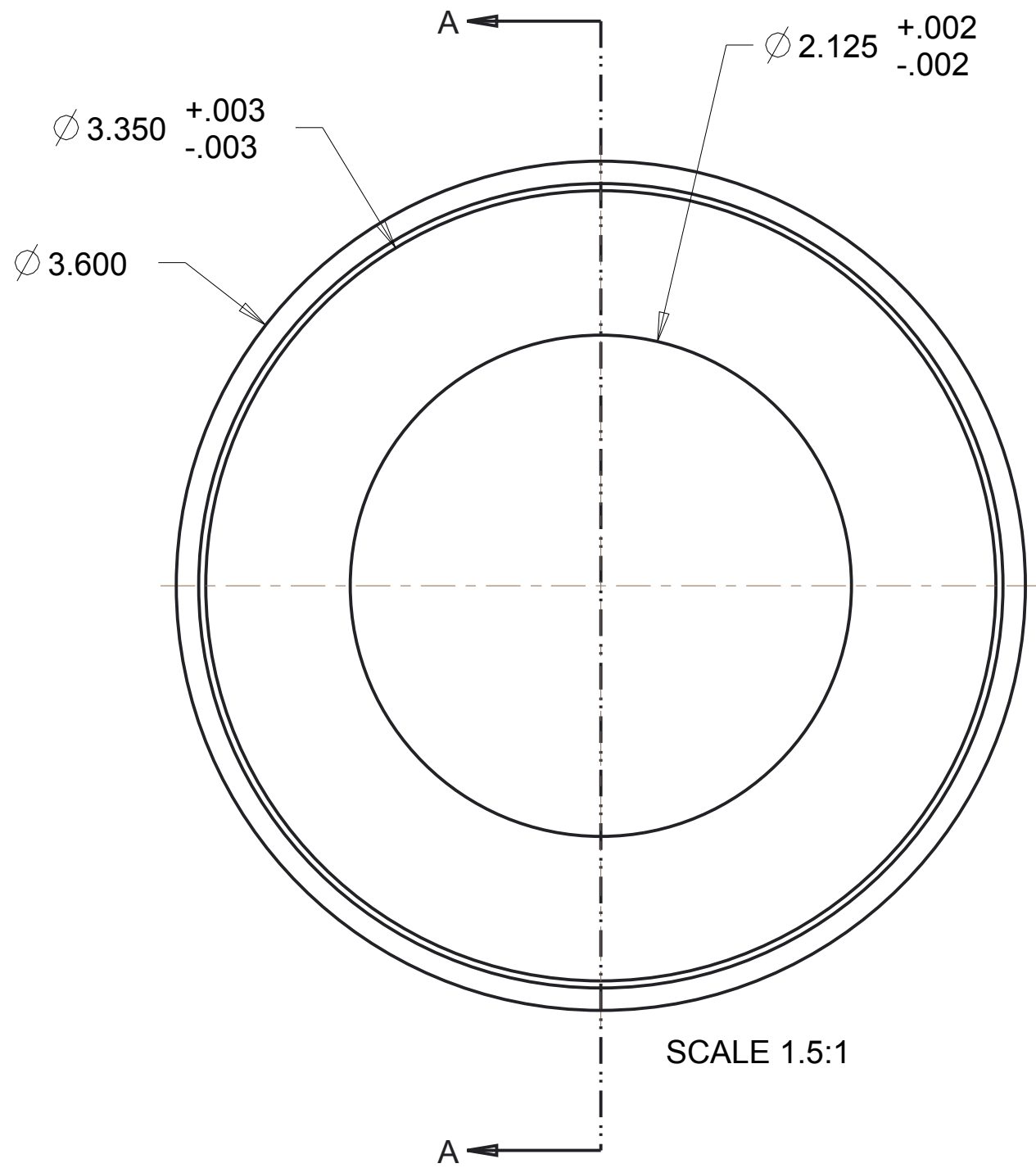
REV.	DESCRIPTON	PART NUMBER	DATE	APPROVED



ALL ANGLE TOLERANCES $\pm 5.0^\circ$
 UNLESS OTHERWISE SPECIFIED ALL TOLERANCES $\pm .005$

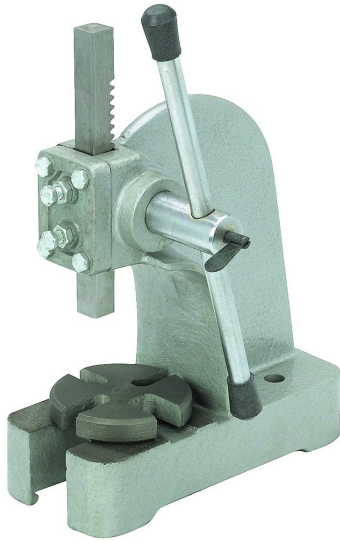
PRESS OUT PLATE		
APPROVED BY:		
REV. -	2/15/13	MSDX020

REV.	DESCRIPTION	PART NUMBER	DATE	APPROVED



ALL ANGLE
TOLERANCES $\pm 5.0^\circ$
UNLESS OTHERWISE SPECIFIED
ALL TOLERANCES $\pm .005$

PRESS ALIGNMENT CUP		
APPROVED BY:		
REV. -	2/15/13	MSDX021



Double click on above image to view full picture



1/2 Ton Arbor Press

Central Machinery - Item#3551

Be The First To Write A Review

Hand-operated arbor press for smaller production and assembly jobs

Only: ~~\$39.99~~
Sale: \$35.99

Purchase In Store Only

* Please call your local store for availability.

PRINT THIS ITEM

This item may be available at your local Harbor Freight Tools Store

FIND STORE

[Add to Wishlist](#) [View Shipping Rates](#)

100% SATISFACTION GUARANTEE

ACCESSORIES YOU NEED



[6 Ton A-Frame Bench Shop Press](#)

Only: ~~\$89.99~~
Sale: \$69.99



[1 Ton Arbor Press](#)

Only: ~~\$59.99~~
Sale: \$49.99

[3 Piece Die Set](#)



Only: \$49.99

Product Overview

Customer Reviews

Warranty

Product Manual

Description

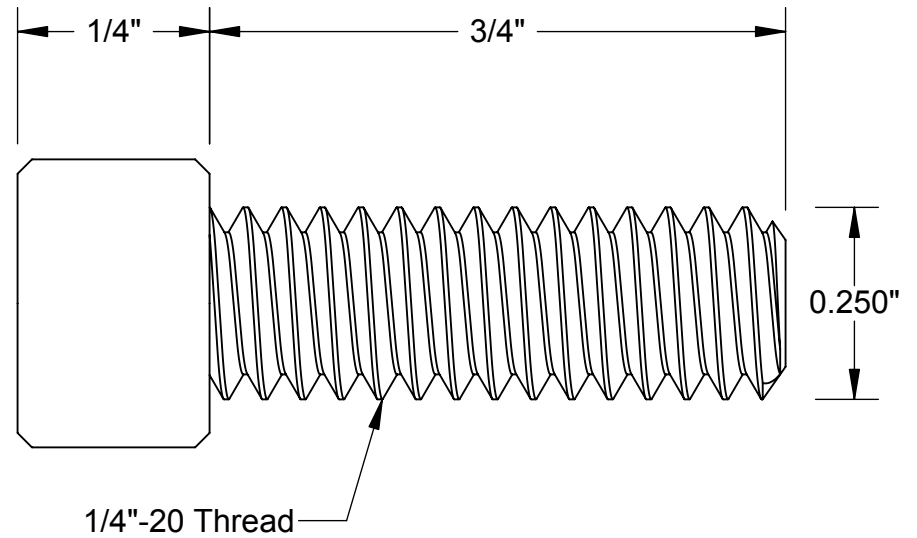
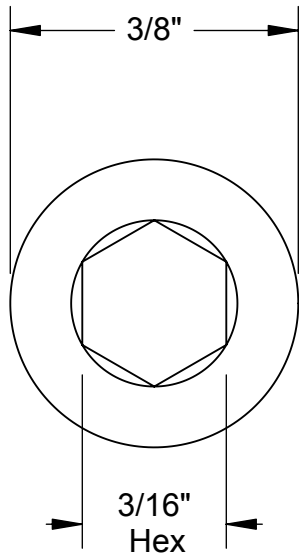
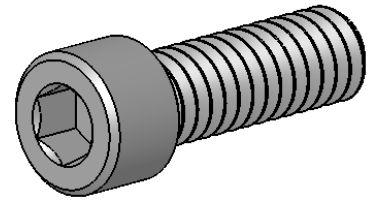


Mount this hand-operated arbor press onto your workbench to handle smaller production and assembly jobs such as installing and removing bearings, staking and other press fit work. The arbor press applies a maximum 1/2 ton force and features all-metal construction with a large base and slotted table plate. With mounting holes included, this arbor press sets up quickly and easily.

- All metal construction
- Large base and slotted table plate
- Largest arbor: 1"
- Leverage ratio: 20:1

Specifications

Name	1/2 Ton Arbor Press
SKU	3551
Brand	Central Machinery
Leverage ratio	20:1
Material	Metal
Arbor size	1 in.
Maximum working height (in.)	4-1/2 in.
Product Height	10 in.
Product Length	9-1/2 in.
Product Width	4 in.
Warranty	90 Day



McMASTER-CARR 

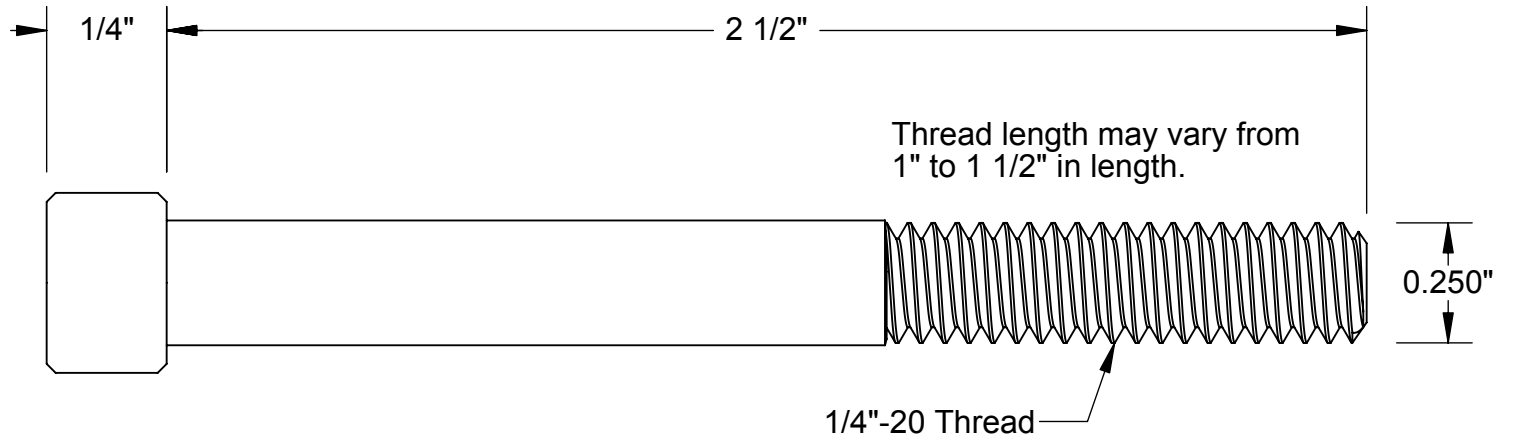
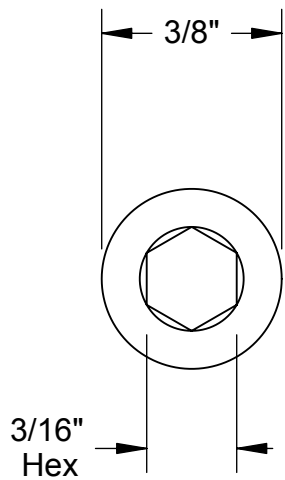
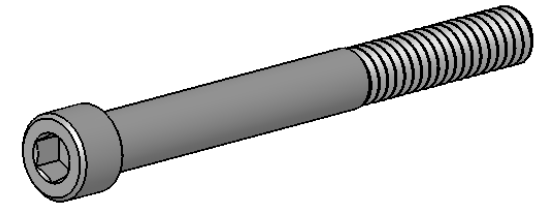
PART
NUMBER

91251A540

<http://www.mcmaster.com>
© 2008 McMaster-Carr Supply Company

Black-Oxide Alloy Steel
Socket Head Cap Screw

Unless otherwise specified, dimensions are in inches. Information in this drawing is provided for reference only.



McMASTER-CARR 

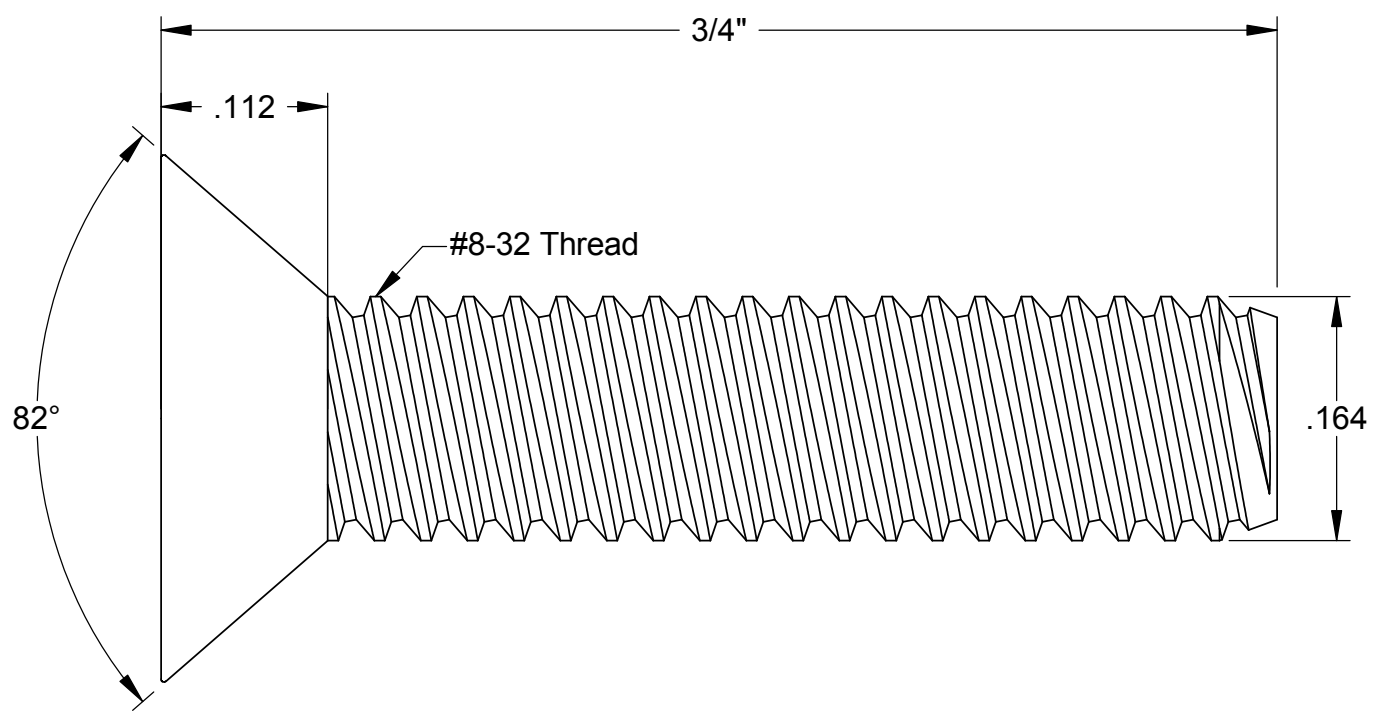
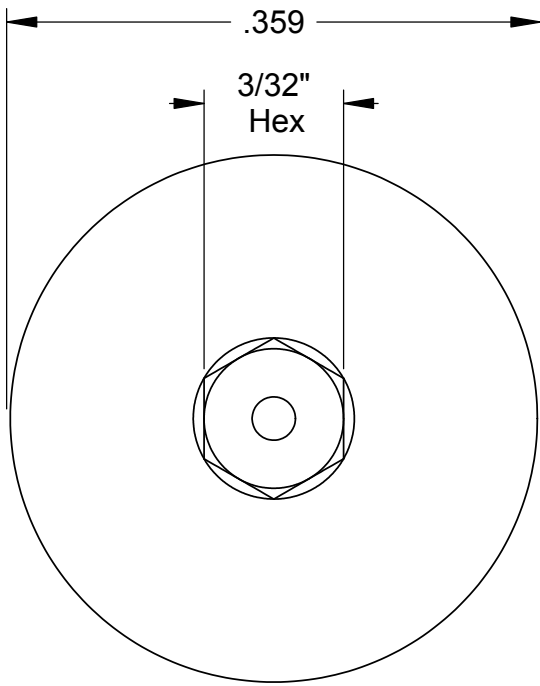
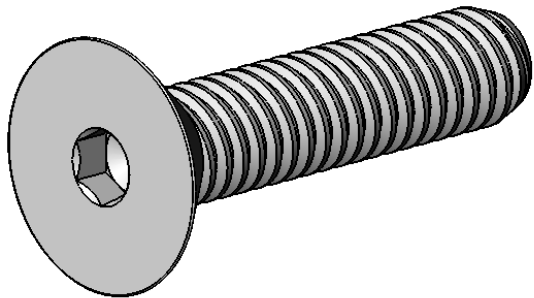
PART
NUMBER

91251A552

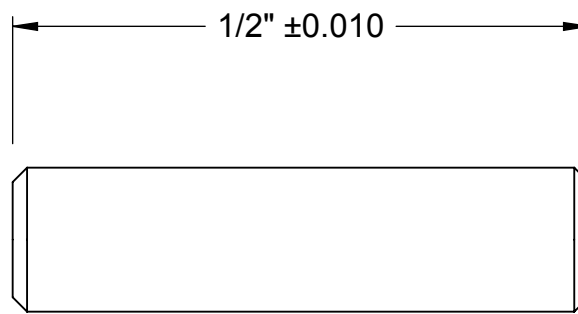
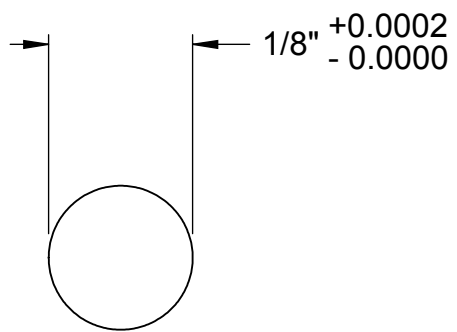
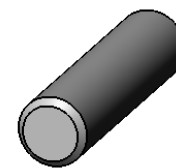
<http://www.mcmaster.com>
© 2008 McMaster-Carr Supply Company

Black-Oxide Alloy Steel
Socket Head Cap Screw

Unless otherwise specified, dimensions are in inches. Information in this drawing is provided for reference only.



McMASTER-CARR <small>CAD</small>	PART NUMBER 91253A197
http://www.mcmaster.com © 2006 McMaster-Carr Supply Company	Black-Oxide Alloy Steel Flat Socket Head Cap Screw
Unless otherwise specified, dimensions are in inches. Information in this drawing is provided for reference only.	



McMASTER-CARR CAD

PART NUMBER **97395A441**

<http://www.mcmaster.com>
© 2012 McMaster-Carr Supply Company

Type 316 Stainless Steel
Dowel Pin

Information in this drawing is provided for reference only.



PRODUCTS | RESOURCES | SERVICES | WORLDWIDE | REPAIR PARTS

Power Transmission > Couplings, Collars, and Adapters > Rigid Couplings

RULAND MANUFACTURING Coupling, One Piece, Bore Dia 1/2 In

☆☆☆☆☆ | [Write a Review](#) | [Read all Reviews](#) | [Read all Ask & Answer](#)

[Share This Product](#)

Rigid Shaft Coupling, One Piece Clamp Type, Without Keyway, Bore Dia 1/2 In, Overall Length 1 3/4 In, Outside Dia 1 1/8 In, Clearance Dia 1.328 In, Screw Size #8-32 In, Max Torque 950 In-Lb, Black Oxide Steel

Grainger Item #	2AMG7
Price (ea.)	\$42.50
Brand	RULAND MANUFACTURING
Mfr. Model #	CLX-8-8-F
UNSPSC #	31162811
Ship Qty.	1
Sell Qty. (Will-Call)	1
Ship Weight (lbs.)	0.37
Availability	Typically in Stock
Catalog Page No.	179
Country of Origin	USA
<small>(Country of Origin is subject to change.)</small>	



[Enlarge Image](#)

Qty.

Price shown may not reflect your price. [Sign in](#) or [register](#).

Check Availability Use your ZIP code to estimate availability.

Qty: ZIP code:

Tech Specs	Additional Information	Compliance & Restrictions	MSDS	Required Accessories	Optional Accessories	Alternate Products	Repair Parts
Item	Rigid Shaft Coupling						
Type	One Piece Clamp Type, Without Keyway						
Bore Dia.	1/2"						
Overall Length	1-3/4"						
Outside Dia.	1-1/8"						
Clearance Dia. (In.)	1.328						
Screw Size (In.)	#8-32						
Max. Torque (In.-Lbs.)	950						
Material	Black Oxide Steel						

Category Top Sellers



Coupling, One Piece, Bore Dia 5/8 In

Brand:	RULAND MANUFACTURING
Grainger Item #:	2ALN1
Price:	\$102.35
Qty	<input type="text"/>



Coupling, Rigid Steel

Brand:	DAYTON
Grainger Item #:	3ZN69
Price:	\$72.45
Qty	<input type="text"/>



Coupling, Rigid Steel

Brand:	DAYTON
Grainger Item #:	6L015
Price:	\$12.26
Qty	<input type="text"/>



Coupling, Two Piece, Bore Dia 2 In

Brand:	RULAND MANUFACTURING
Grainger Item #:	2APP9
Price:	\$332.00
Qty	<input type="text"/>

Category Top Sellers				
Coupling, Rigid Steel	Coupling, One Piece, Bore Dia 5/8 In	Coupling, Two Piece, Bore Dia 1 x 3/4 In	Coupling, Set Screw Type, Bore 1/2 In	Shaft Coupling, Round Bore, Dia. 1-3/8 In
Brand: DAYTON	Brand: RULAND MANUFACTURING	Brand: RULAND MANUFACTURING	Brand: RULAND MANUFACTURING	Brand: HUB CITY
Grainger Item #: 3ZN61	Grainger Item #: 2ALG7	Grainger Item #: 2APZ8	Grainger Item #: 2AEK5	Grainger Item #: 15V710
Price: \$66.40	Price: \$129.40	Price: \$109.20	Price: \$43.00	Price: \$78.85
Qty <input type="text"/>	Qty <input type="text"/>	Qty <input type="text"/>	Qty <input type="text"/>	Qty <input type="text"/>

Other Popular Terms for this Product

- [Shaft Couplings \(1564\)](#)
- [Rigid Type Couplings \(393\)](#)
- [Set Screw Couplings \(360\)](#)

[Read Reviews](#)

[Write Reviews](#)

[Ask And Answer](#)

This Product has no Reviews. Be the first to [Write a Review](#).

Product Reviews Disclaimer:

Grainger is neither responsible for, nor does it endorse, the content of any product review or statement posted. Any statements posted constitute the statements of the poster and are not the statements of Grainger. The statements posted by Grainger employees with the Grainger employee badge represent the views of such employees and are not the statements of Grainger. Grainger makes no representations as to the appropriateness, accuracy, completeness, correctness, currentness, suitability, or validity of any product review or statements posted, including those posted by employees with the Grainger employee badge, and is not liable for any losses, injuries or damages which may result from any such product review or statements. Use of any linked web site provided in a product review or post is at the user's own risk.

[View Catalog Page](#)

[View Printable Page](#)

[Return To Top](#)

Customer Service

- [Catalog Request](#)
- [Contact Us](#)
- [Feedback](#)
- [Find a Branch](#)

**Questions? Call us
1-800-Grainger**

Order Support

- [Bulk Order Pad](#)
- [Order History](#)
- [Order Status](#)
- [Returns](#)
- [Site Features](#)
- [Will Call](#)

Company Information

- [About Us](#)
- [Careers](#)
- [Corporate Social Responsibility](#)
- [Diversity](#)
- [Investor Relations](#)
- [Press Room](#)
- [Supplier Overview](#)
- [Sustainability](#)
- [Technical Education](#)
- [Worldwide](#)

Online Resources

- [Clearance Center](#)
- [Exclusive Brands](#)
- [Hot Buys](#)
- [Rebates](#)
- [Today's Features](#)
- [Webinars](#)

Services

- [Auto-Reorder](#)
- [Emergency Services](#)
- [Grainger Lighting Services](#)
- [Grainger Online SafetyManagerSM](#)
- [Grainger TripleGuard[®]](#)
- [Inventory Management](#)
- [Online Purchasing Solutions](#)
- [Paperless Invoicing](#)
- [Products Beyond the Catalog[®]](#)

Email Sign Up

Get industry news, new product information, helpful tips and more.

Connect With Us

[Home](#) | [Terms of Access](#) | [Terms of Sale](#) | [Return Policy](#) | [Privacy Policy](#) (Rev. October, 2012) | [About our Ads](#) | [Sitemap](#)

© 1994 - 2013 W.W. Grainger, Inc. All rights reserved.