

3

rd

ATHENS SYMPOSIUM

Gastrointestinal Cancer

Prevention, Recognition & Management
A Primer for Physicians

8-9 JULY | 2016

ATHENS HILTON HOTEL-GREECE

• Lectures • Live Procedures • Hands-on Courses

ORGANIZED BY



**HELLENIC SOCIETY
OF GASTROENTEROLOGY**

ENDORSED BY



**ATHENS
MEDICAL
ASSOCIATION**



**EUROPEAN SOCIETY
OF GASTROINTESTINAL
ENDOSCOPY**



**AMERICAN SOCIETY
FOR GASTROINTESTINAL
ENDOSCOPY**

SYMPOSIUM SECRETARIAT



16, Kifisias Avenue 115 26 Athens
Tel: (+30.210) 74 99300 Fax: (+30.210) 77 05752
Email: info@athens-symposium.com

University of Athens

Nelly Repli

FINAL PROGRAMME

WEB SITE: www.athens-symposium2016.com



PENTASA[®] 2g

MESALAZINE

Prolonged release granules

To **Remission** and **Beyond**



Up to
4g once
daily

FERRING
PHARMACEUTICAL

Lectis ad:



GR1411271152



Novartis (Hellas) A.E.B.E.
Τ.Θ. 52001, 144 10 Μεταμόρφωση
Τηλ. 210 2811712
www.novartis.gr

Γραφείο Θεσσαλονίκης
12ο χλμ Θεσσαλονίκης - Νέων Μουδανιών,
570 01 Θέρμη, 2ος όροφος, Κτήριο Βρανάς
Τηλ. 2310 424039

ΦΑΡΜΑΚΟΕΠΑΓΡΥΠΝΗΣΗ: 210 2828812



Dear Colleagues,

Time flies and here we are again only too thrilled to welcome to Athens the Greek and foreign colleagues who will be attending the 3rd Athens International Symposium, which will be held at the Athens Hilton Hotel on Friday & Saturday July 8th - 9th, 2016.

Supported by the Hellenic Society of Gastroenterology we intend to make the 2016 Symposium a unique educational and clinical experience for all attendees.

Once again, this Symposium focuses on scientists who work on primer health care, internists and general practitioners.

This year, as per tradition, the faculty is made up of the major international opinion leaders of the digestive endoscopy community. The Athens International Symposium is a 2-day event with 36 Lectures, 24 Live Case Demonstrations and 10 Hands-On Training Stations featuring a high-caliber International Faculty of 25 world renowned scientists from twelve (12) countries and four (4) continents.

It aims at the prevention, recognition and management of gastrointestinal cancer: from the initial symptoms to the final diagnosis, the fundamental principles of the core techniques and innovative demonstrations of the new technologies, including advancements in EUS, ERCP, EMR, ESD and P.O.E.M.

We cordially invite you all, general practitioners, internists, gastroenterologists, GI residents, GI surgeons and radiologists but also medical students as well as nurses, to participate in this international teamwork training effort.

Looking forward to seeing you all in Athens!

Yours Sincerely,



Dr. Ioannis Katsogridakis, MD

Dear Colleagues,

On behalf of the Hellenic Society of Gastroenterology I would like to welcome all the attendees of the “3rd Athens International Symposium on the Prevention, Recognition and Management of Gastrointestinal Cancer” in Athens, the capital city of Greece.

This congress is organized and fully supported by our Society and I am sure that it will be a unique educational and scientific event focusing not only to Gastroenterologists but also to Internists, Family and Primary Care Physicians and General Practitioners.

Our faculty consists of world renowned experts in the field of Gastroenterology and Interventional Endoscopy coming from 12 countries and 4 continents as well as Greek specialists in managing patients at high risk for neoplasia and cancer of GI tract. We would like to thank them all for their participation, dedication and support to this outstanding scientific event.

The participants have the opportunity to attend up-to-date high quality scientific lectures as well as live demonstrations and participate in hands-on courses addressed by the International Faculty. In our highly competent and fast evolving world Gastroenterologists should be updated on the latest techniques in this field and there is no better way to do that than the one provided in this Symposium’s live procedures and hands-on animal model courses.

Furthermore, Internists and Primary Care Physicians should be provided with firm indications for referring patients to the specialists as well as to follow-up the patient in an evidence-based manner. In order to ensure that the Symposium will be a unique opportunity for Internists and General Practitioners, subjects addressed to them will take place in a separate congress room during the second day. Co-operation among doctors is of the utmost importance and this approach will offer a better understanding among colleagues that will ultimately benefit the patient.

I hope that you will actively participate in the 3rd Athens Symposium and enjoy your stay in Athens, the heart of the European civilization!

Yours Sincerely,



*Sotirios D. Georgopoulos, MD, FEBGH, AGAF
President of the Hellenic Society of Gastroenterology (HSG)*

Resolution 360™ Clip

Take Control

The Resolution 360™ Clip's **innovative and unique design** enables **precise control and 1:1 rotation in either direction** for more accurate clip placement and increased procedural efficiency.



Caution: The law restricts these devices to sale by or on the order of a physician. Indications, contraindications, warnings, and instructions for use can be found in the product labelling supplied with each device. Information for the use only in countries with applicable health authority product registrations. All trademarks are the property of their respective owners.

© 2016 by Boston Scientific Corporation or its affiliates. All rights reserved.
ENDO-384204-AA April 2016.

COMMITTEES

Organizing Committee



Honorary President:
Prof. Dr. N. Soehendra (DE)



Course Director:
Dr. I. Katsogridakis (GRE)



Course Co-Director:
Prof. Dr. G. Triadafilopoulos (USA)



Course Co-Director:
Dr. S. D. Georgopoulos (GRE)

Organizing Committee Members

D. Christodoulou (Greece)
D. Coumaros (France)
N. Eleftheriadis (Greece)
A. Grammatopoulos (Greece)
A. Polydorou (Greece)
D. Tabakopoulos (Greece)
K. Triantafyllou (Greece)
D. Tzilves (Greece)
S. Seewald (Switzerland)

Scientific Committee

PRESIDENTS:

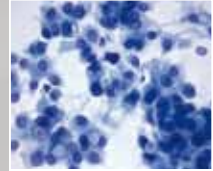
Prof. Dr. H. Inoue (Japan)
Prof. Dr. S. D. Ladas (Greece)

Scientific Committee Members

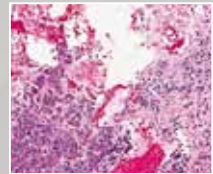
E. Akriviadis (Greece)
V. Delis (Greece)
A. Hatzitolios (Greece)
I. Karagiannis (Greece)
D. G. Karamanolis (Greece)
P. Kassapidis (Greece)
J. Kountouras (Greece)
A. Mantides (Greece)
S. Michopoulos (Greece)
A. Ntailianas (Greece)
G. V. Papatheodoridis (Greece)
G. Paspatis (Greece)
J. K. Triantafillidis (Greece)

Cytology, cell block or core: Results you can see.

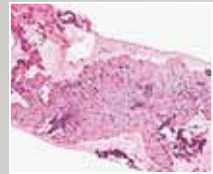
Balancing sample capacity and needle flexibility, Cook's EUS needles allow you to target small lesions in even the most difficult locations, while increasing valuable yields with potentially fewer needle passes.



Cytology



Cell Block



Core

EchoTip ProCore®

HD ULTRASOUND BIOPSY NEEDLE

EchoTip® Ultra

ENDOSCOPIC ULTRASOUND NEEDLE



cookmedical.com

Pathology images courtesy of James Farrell, MD
Interventional Endoscopy and Pancreatic Diseases Section of Digestive Diseases,
Yale University School of Medicine.



Ablation of Barrett's esophagus with HybridAPC

- ☑ Waterjet elevation prior to APC ablation
- ☑ Thermal protection of the muscularis
- ☑ Limited APC penetration depth, minimized risk of stricture
- ☑ Targeted, dynamic APC application; healthy epithelium is preserved
- ☑ Cost-effective disposable instrument
- ☑ With proven APC and waterjet functions
- ☑ No instrument change for elevation and ablation

INTERNATIONAL FACULTY

By Alphabetical Order



Aabakken, Lars, MD, Prof.
President
European Society of
Gastrointestinal Endoscopy
Oslo, Norway



Dimitrakaki, Christine, MD
Program coordinator
Institute of Social and Preventive
Medicine (ISPM)
University of Athens
Athens, Greece



Bourke, Michael, MD, Prof.
Director, Gastrointestinal
Endoscopy
Westmead Hospital
Sydney, Australia



Giovannini, Marc, MD, Prof.
Chief of Endoscopy
Medical Oncology Unit
Paoli-Calmettes Institute
Marseille, France



Cai, Ming-Yan, MD
Endoscopy Center
Zhongshan Hospital
Fudan University, Shanghai



Hochberger, Juergen, MD, Prof.
Head, Gastroenterology
& Digestive Endoscopy University
Hospital of Strasbourg
Strasbourg, Germany



Chiu, WY Philip, MD, Prof.
Director, CUHK Jockey Club Minimally
Invasive Surgical Skills Center;
Director, Chow Yuk Ho Technology
Center for Innovative Medicine;
Professor, Division of Upper GI &
Metabolic Surgery; Institute of
Digestive Disease and State Key Lab
on Digestive Disease
The Chinese University of Hong Kong



Hu, Bing, MD, Prof.
Director, Endoscopy Center
West China Hospital, Sichuan University
Chengdu, China



Inoue, Haruhiro, MD, Prof.
Digestive Disease Center
Showa University
Koto Toyosu Hospital
Tokyo, Japan



Costamagna, Guido, MD, Prof.
Istituto di Clinica Chirurgica
Universita Cattolica
del Sacro Cuore
Roma, Italy



Messmann, Helmut, MD, Prof.
Academic Teaching Hospital of
the Ludwig-Maximilians
University of Munich
Munich, Germany



Coumaros, Dimitri, MD, Prof.
Department of
Hepatogastroenterology
Clinique Sainte Barbe
Strasbourg, France



Neuhaus, Horst, MD, Prof.
Evangelisches Krankenhaus
Department of Internal Medicine
Düsseldorf, Germany



Papatheodoridis, George, MD, Prof.
Director, Department of
Gastroenterology
Laiko General Hospital
University of Athens
Athens, Greece



Ponchon, Thierry, MD, Prof.
Department of
Hepatogastroenterology
Hopital Edouard Herriot
Lyon, France



Reddy, Nageshwar, MD, Prof.
President
World Endoscopy Organization
Hyderabad, India



Roesch, Thomas, MD, Prof.
Director, Dept of Interdisciplinary
Endoscopy
University Medical Center
Hamburg-Eppendorf
Hamburg, Germany



Seewald, Stefan, MD, Prof.
Endoscopy Center of
Gastroenterology
Hirslanden Private Clinic Group
Zurich, Switzerland



Sharma, Prateek, MD, Prof.
Department of Gastroenterology
University of Kansas School
of Medicine
Kansas City, Kansas, USA



Siersema, Peter, MD, Prof.
Department of Gastroenterology
University Medical Center Utrecht
Utrecht, The Netherlands



Soehendra, Nib, MD, Prof.
Dept. of Interdisciplinary Medicine
University Hospital of Hamburg
Hamburg, Germany



Stavropoulos, Stavros, MD, Prof.
Department of GI Endoscopy
Winthrop University Hospital
New York, NY, USA



Waye, Jerome Donar, MD, Prof.
Past President World Endoscopy
Organisation
Mount Sinai Hospital
New York, USA



Yahagi, Naohisa, MD, Prof.
Research & Development of
Minor Invasive Treatment
Keio University Cancer Center
Tokyo, Japan



Yamamoto, Hironori, PD Dr., Prof.
Chairman, Division of
Gastroenterology
Jichi Medical University
Tochigi, Japan



Zhou, Pinghong, MD, Prof.
Endoscopy Center
Zhongshan Hospital
Fudan University
Shanghai, China

Tsiamoulos, Zaharias, MD
East Kent University
Foundation Hospitals
Sponsored Lecturer

DETECT EARLY. TREAT EARLY.

Beacon™
EUS Delivery System



PillCam™
Capsule Endoscopy Platform



Barrx™
Radiofrequency Ablation
System



Gastrointestinal Functional
Diagnostic Portfolio



HALL SANTORINI

09:15 - 10:30 LOWER GI SESSION

Moderators: **I. Triantafyllidis, N. Viazis**

- ▶ *Is it only diarrhea or inflammatory bowel disease? Diagnostic plan in primary care*

L. Aabakken

- ▶ *Management of iron deficiency anemia*

D. Coumaros

- ▶ *Family history and gastrointestinal cancer*

Th. Ponchon

- ▶ *Lower GI bleeding*

H. Messmann

HALL SANTORINI

10.30 - 11.00 OPENING CEREMONY

Invited for Welcome Addresses:

- ▶ **Dr Ioannis Katsogridakis**
Scientific Director
- ▶ **Dr Sotirios D. Georgopoulos**
President of Hellenic Society of Gastroenterology (H.S.G.)
- ▶ **Prof. Lars Aabbaken**
President of European Society of Gastrointestinal Endoscopy (E.S.G.E.)
- ▶ **Prof. Nageshwar Reddy**
President of World Endoscopy Organization (W.E.O.)
- ▶ **Mr Yiorgos kaminis**
Major of City of Athens
- ▶ **Dr Andreas Xanthos**
Minister of Health of Greek Republic

11.00 - 11.30 Coffee Break

HALL SANTORINI

11.30 - 11.50 SPECIAL LECTURE

Chair: **D. Karamanolis**

- ▶ *"Colorectal cancer screening programs: Guidance to successful implementation"*

J-D Waye

HALL SANTORINI

11.50 - 13.15 LIVER – PANCREAS SESSION

Moderators: **E. Akriviadis, A. Hatzitolios**

- ▶ *Recognition and management of liver disease in primary care*

G. Papatheodoridis

- ▶ *Recognition and management of obstructive jaundice*

S. Stavropoulos

- ▶ *Early detection of pancreatic cancer in primary care: Is it possible?*

M. Giovannini

- ▶ *Epidemiology and prevention of hepatocellular carcinoma*

G. Papatheodoridis

13.15 - 14.15 Lunch Break

HALL SANTORINI

14.15 - 14.35 SPECIAL LECTURE

Chair: **G. Dimitriadis**

- ▶ *"Managing Preventive Medicine under the influence of the Financial Crisis in Greece"*

Ch. Dimitrakaki



HALL SANTORINI

14.35 - 16.00 UPPER GI SESSION I

Moderators: **S. Manolakopoulos, Ch. Savopoulos**

- ▶ *Barrett's esophagus and esophageal carcinoma*

P. Sharma

- ▶ *Alarm UGI symptoms: Recognize and manage*

Th. Roesch

- ▶ *How to diagnose esophageal and extraesophageal symptoms of GERD*

N. Reddy

- ▶ *Management of Upper GI bleeding*

Ph. Chiu

16.00 - 16.30 Coffee Break

16.30 - 18.00 UPPER GI SESSION II

HALL SANTORINI

Moderators: **I. Karagiannis, I. Kountouras**

- ▶ *Endoscopy in dyspepsia*

S. Seewald

- ▶ *Evaluation of Dysphagia*

J. Hochberger

- ▶ *Achalasia: The new endoscopic treatment (POEM)*

M-Y Cai

- ▶ *Management (recognition and treatment) of early gastric cancer*

H. Neuhaus

08.30 - 09.00 **Registrations** HALL ESPERIDES

09.00 - 10.30 **COLON SESSION**

Moderators: **I. Koutroumbakis, G. Paspatis**

▶ Optimal Colonoscopy: Quality and performance metric*

Z. Tsiamoulos

(Sponsored Lecture)

▶ *Novel colonoscopies – accessories – techniques to improve adenoma detection rate*

P. Siersema

▶ *Endoscopy in the management of dysplasia in IBD patients*

Th. Ponchon

▶ *Serrated adenoma: A new kid on the block*

M. Bourke

▶ *Colorectal EMR - ESD*

N. Yahagi

Q & A

HALL ESPERIDES

10.30 - 11.30 **LIVE PROCEDURE DEMONSTRATIONS PART I**

Panelists: **N. Eleftheriadis, Ch. Liatsos, V. Ntelis, E. Symvoulakis, Z. Tsiamoulos, V. Tzias**

11.30 - 11.50 **Coffee Break**

HALL ESPERIDES

11.50 - 12.40 **LIVE PROCEDURE DEMONSTRATIONS PART II**

Panelists: **P. Kassapidis, P. Kostopoulos, M. Mylonaki, A. Ntailianas, E. Skotiniotis, D. Tambakopoulos**

HALL ESPERIDES

12.40 - 13.00 **STATE OF THE ART LECTURE**

Chair: **A. Polydorou**

▶ *“Endoscopy for the Management of Pancreatic Cystic Lesions”*

L. Aabakken

13.00 - 14.00 **Lunch Break**

HALL ESPERIDES

14.00 - 15.20 **LIVE PROCEDURE DEMONSTRATIONS PART III**

Panelists: **G. Anagnostopoulos, S. Basioukas, D. Kamberoglou, A. Kofokotsios, G. Mavrogennis, S. Sgouros**

*Lecture sponsored by ARC Medical Design Limited

HALL ESPERIDES

15.20 - 15.40 STATE OF THE ART LECTURE

Chair: **S. D. Georgopoulos**

- ▶ *"The role of gastrointestinal endoscopy in lower esophageal sphincter disorders"*

N. Reddy

President of World Endoscopy Organization (W.E.O.)

15.40 - 16.00 Coffee Break

HALL ESPERIDES

16.00 - 17.00 LIVER - BILIARY TREE - PANCREAS SESSION

Moderators: **S. Karatapanis, I. Vlachogiannakos**

- ▶ *The impact of antiviral therapy on the incidence of hepatocellular carcinoma in chronic HBV or HCV patients*

G. Papatheodoridis

- ▶ *Interventional treatment of malignant biliary obstruction*

H. Neuhaus

- ▶ *Hilar Lesions: When to stent or not to stent, and which stent to use*

G. Costamagna

Q & A

HALL ESPERIDES

17.00 - 18.00 LIVE PROCEDURE DEMONSTRATIONS PART IV

Panelists: **K. Christodoulou, Th. Emmanouil, Ch. Kalantzis, G. Karamanolis, M. Oikonomou, E. Vardas, Ch. Zavos**



07.00 - 08.30

EARLY MORNING WITH THE EXPERTS

“How i do it & why i do it that way”

Early Morning with the Japanese Experts on ESD

- H. Inoue ▶ Esophageal & Gastric ESD
- H. Yamamoto ▶ Duodenal ESD
- N. Yahagi ▶ Colon ESD

HALL ESPERIDES

HALL SANTORINI

Early Morning with the Experts on Polypectomy

- M. Bourke ▶ Duodenal EMR
- H. Messmann ▶ Gastric Polypectomy
- J-D Wayne ▶ Colon Polypectomy

08.30 - 10.00

STOMACH AND SMALL BOWEL SESSION

Moderators: **K. Paraskeva, G. Paspatis**

- ▶ *Selecting submucosal UGI lesions for ultrasound referral*

M. Giovannini

- ▶ *Tips and tricks for successful and uneventful ampulectomy*

Th. Roesch

- ▶ *Full thickness endoscopic resection for UGI sub-epithelial tumors*

P. Zhou

- ▶ *Small bowel polypectomy*

H. Yamamoto

HALL ESPERIDES

Q & A

10.00 - 10.20

SPECIAL LECTURE

Chair: **S. Ladas**

- ▶ *“An endoscopic journey to the large bowel”*

J-D Wayne

HALL ESPERIDES

SATURDAY JULY 9

MEETING ROOM A:

For GASTROENTEROLOGISTS and GASTROINTESTINAL SURGEONS

10.30 - 11.00 **OPENING CEREMONY** HALL SANTORINI

11.00 - 11.20 **Coffee Break**

HALL ESPERIDES

11.20 - 12.40 **LIVE PROCEDURE DEMONSTRATIONS PART V**

Panelists: D. Christodoulou, D. Dandakis, K. Delis, S. Dokas,
Ch. Papafragkakis, P. Tassios, K. Zografos

HALL ESPERIDES

12.40 - 13.00 **PRESIDENTIAL LECTURE**

Chair: I. Katsogridakis

▶ "The contribution live courses have made in the advancement of
gastrointestinal endoscopy"

Symposium Honorary President Prof. Nib Soehendra

13.00 - 14.00 **Lunch Break**

14.00 - 15.20 **LIVE PROCEDURE DEMONSTRATIONS PART VI**

HALL ESPERIDES

Panelists: S. Kouvaras, E. Panagou, K. Thomopoulos, P. Tsibouris,
D. Tsounis, D. Tzilves, K. Vasiliadis

15.20 - 16.00 **Coffee Break**

HALL ESPERIDES

16.00 - 17.15 **ESOPHAGUS SESSION**

Moderators: A. Mandides, S. Michopoulos

▶ *Barrett's esophagus ablation: HALO, APC or Cryotherapy?*

P. Sharma

▶ *ARMS: The new era in the treatment of GERD*

H. Inoue

▶ *POEM for the treatment of achalasia: Is it mainstream?*

S. Stavropoulos

▶ *Endoscopic tunneling technique for treatment of giant esophageal
diverticula*

B. Hu

Q & A

HALL ESPERIDES

17.15 - 18.00 **LIVE PROCEDURE DEMONSTRATIONS PART VII**

Panelists: D. Hatzopoulos, I. Kalliakmanis, D. Karagiannis,
D. Polymeros, V. Vamvakousis, E. Xirouhakis

HALL SANTORINI

07.00 - 09.00 ADVANCED HANDS-ON COURSE, MORNING SESSION

- Courses**
- ESD I Expert: **H. Yamamoto**
 - ESD II Expert: **H. Messmann**
 - ESD III Expert: **N. Yahagi**
 - ESD - EMR Expert: **J. Hochberger**
 - POEM Expert: **H. Inoue**

HALL SANTORINI

16.00 - 18.00 ADVANCED HANDS-ON COURSE, AFTERNOON SESSION

- Courses**
- ESD I Expert: **Ph. Chiu**
 - ESD II Expert: **D. Coumaros**
Z. Tsiamoulos
 - ESD III Experts: **B. Hu, M-Y Cai**
 - ESD - EMR Expert: **J. Hochberger**
 - POEM Expert: **P. Zhou**



Experience Fuse® at the EndoChoice Booth

Changing your view of GI. **Again.**

Introducing Fuse® Generation 3 with Lumos™ Adaptive Matrix Imaging



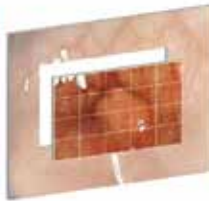
lumos™
Adaptive Matrix Imaging



Standard HD image



64 unique "tiles" are analyzed for mucosal differences



Only tiles containing important features are enhanced



Lumos™ Adaptive Matrix Image

 **ENDOCHOICE®**

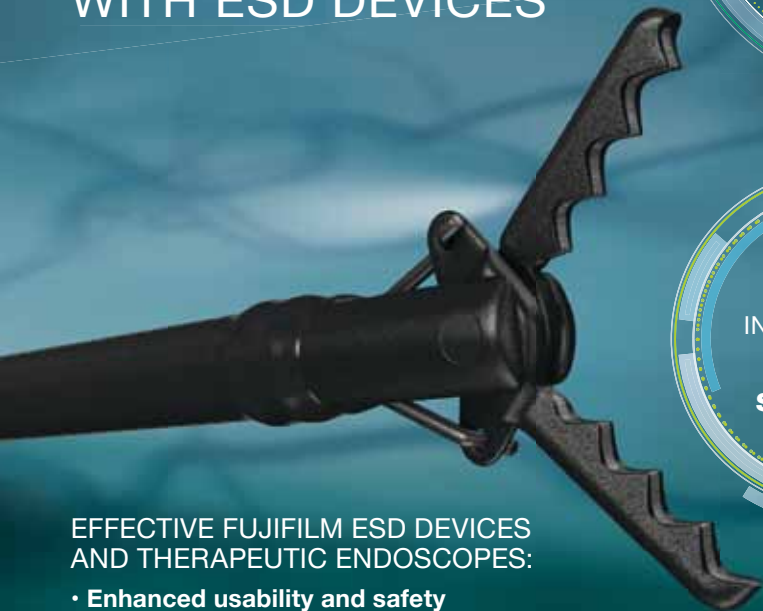
fuse
Adaptive Matrix Imaging

To schedule a Fuse demo, please email fuse@endochoice.com or call +49 (0) 4101 51 73 456.

EndoChoice.com/Fuse | FuseColonoscopy.org | FuseCases.com

Imaging | Devices | Infection Control

THERAPEUTIC ENDOSCOPY WITH ESD DEVICES



**VISIT US
AT ATHENS
INTERNATIONAL
SYMPOSIUM
STAND NO. 8**

EFFECTIVE FUJIFILM ESD DEVICES
AND THERAPEUTIC ENDOSCOPES:

- **Enhanced usability and safety**
with FlushKnife series ball & needle tip
- **3in1 ESD tool** – Incision, dissection and coagulation
with ClutchCutter therapeutic forceps
- **Smart Bend gastroscopes & colonoscopes** with excellent
maneuverability and 210 degree up angulation

For further information contact endoscopy@fujifilm.eu or visit www.fujifilm.eu/eu/products/medical-systems

Your local partner in Greece:

Endoscopiki SA
12, Zagoras Str
115 27 Athens, Greece

Tel. +30-210-7488820
Fax +30-210-7470090
Email: info@endoscopiki.gr

FUJIFILM
Value from Innovation

MODERATORS

By Alphabetical Order

- Akriviadis E.
- Alexandrakis D.
- Anagnostopoulos G.
- Basioukas S.
- Christodoulou D.
- Christodoulou K.
- Dandakis D.
- Delis K.
- Dimitriadis G.
- Dokas S.
- Eleftheriadis N.
- Emmanouil Th.
- Georgopoulos S. D.
- Hatzitolios A.
- Hatzopoulos D.
- Kalantzis Ch.
- Kalliakmanis I.
- Kamberoglou D.
- Karagiannis D.
- Karagiannis I.
- Karamanolis D.
- Karamanolis G.
- Karatapanis S.
- Kassapidis P.
- Katsogridakis I.
- Kofokotsios A.
- Kostopoulos P.
- Kountouras I.
- Koutroumbakis I.
- Kouvaras S.
- Ladas S.
- Liatsos Ch.
- Mandides A.
- Manolakopoulos S.
- Mavrogennis G.
- Michopoulos S.
- Mylonaki M.
- Ntailianas A.
- Ntelis V.
- Oikonomou M.
- Panagou E.
- Papafragkakis H.
- Paraskeva K.
- Paspatis G.
- Polydorou A.
- Polymeros D.
- Savopoulos Ch.
- Sgouros S.
- Skotiniotis E.
- Symvoulakis E.
- Tambakopoulos D.
- Tassios P.
- Thomopoulos K.
- Triantafyllidis I.
- Tsiamoulos Z.
- Tsibouris P.
- Tsounis D.
- Tzias V.
- Tzilves D.
- Vamvakousis V.
- Vardas E.
- Vasiliadis K.
- Viazis N.
- Vlachogiannakos I.
- Xirouhakis E.
- Zavos Ch.
- Zografos K.



Excellence
in
Medical
Tourism



INNOVATOR IN THE LATEST MEDICAL DEVELOPMENTS STANDING BY PEOPLE

CUTTING-EDGE TECHNOLOGY
AND HIGHLY EXPERIENCED STAFF AND PERSONNEL

9 Ethnarchou Makariou & 1 E. Venizelou Streets 18547 Neo Faliro
210 4809000 www.metropolitan-hospital.gr

LIVE COURSES PARTICIPANTS

The Organizing Committee of the 3rd Athens Symposium “Gastrointestinal Cancer”, would like to express their sincere gratitude to the following:

METROPOLITAN HOSPITAL:

- Sioumalas Panagiotis, *Nurse*
- Gourdurakou Maria, *Nurse*
- Chamedos Athanasios, *Nurse*
- Nikolakopoulou Markela, *Nurse*
- Mouzaki Zoi, *Nurse*
- Koukas Georgios, *Anaesthesiologist*
- Prevezianou Anastasia, *Anaesthesiologist*
- Liosi Ageliki, *Anaesthesiologist*
- Papageorgiou Georgios, *Radiologist*
- Kolovos Ioannis, *Radiologist*
- Katsoras Georgios, *Gastroenterologist*
- Chronakis Michail, *Gastroenterologist*
- Gkouma Ioanna, *Nurse*
- Kypselidou Eleni, *Nurse*
- Stamatelos Ioannis, *Technologist*
- Mitsou Stavroula, *Technologist*
- Koulakos Fotios, *Technologist*
- Karambelas Antonios, *Technologist*
- Roussi Zoi, *Technologist*
- Mouratidi Irene, *Nurse*
- Kokkalis Stavros, *Technologist*
- Rodamitis Evangelos, *Nurse*

ATTIKON UNIVERSITY HOSPITAL:

- Chrisospathi Maria, *Nurse*
- Karaoglou Maria, *Nurse*
- Tsalouka Anastasia, *Nurse*
- Gianneli Konstantina, *Nurse*
- Lila Evdokia, *Nurse*
- Mprountzos Ilias, *Radiologist*
- Spiliopoulos Stavros, *Radiologist*
- Reppas Lazaros, *Radiologist*
- Papapetridou Evdoksia, *Nurse*
- Theodoropoulos Theodoros, *Nurse*
- Parmenidou Niki, *Radiologist*
- Pantazi Angeliki, *Anaesthesiologist*
- Matiatou Stamo, *Anaesthesiologist*
- Deligiannidi Evangelia, *Nurse*
- Zoi Venetia, *Nurse*
- Triantafyllou Konstantinos, *Gastroenterologist*
- Papanikolaou Ioannis, *Gastroenterologist*
- Polymeros Dimitrios, *Gastroenterologist*
- Malli Chrisoula, *Gastroenterologist*
- Lygos Dimitrios, *Gastroenterologist*
- Papadopoulos Vasilios, *Gastroenterologist*
- Tziatzios Georgios, *Gastroenterologist*
- Golfakis Paraskevas, *Gastroenterologist*
- Gatos-Gatopoulos Polychronis, *Gastroenterologist*
- Grammatikos Konstantinos, *Gastroenterologist*

IMAGINE...

Your Thumb Could Maximize ADR

GAIN UP TO
14%
ADR*

Explore How NBI and Dual Focus Contribute to Increased Detection Levels

In combination with a precise examination technique, EVIS EXERA III can significantly increase detection levels.

Latest studies prove that Olympus technologies can increase the adenoma detection rate by 14%¹ and reduce adenoma miss rates by 29%².

EVIS EXERA III helps physicians raise quality of care by improving detection rates.

EVIS EXERA III – it's proven.

➤ **Explore the evidence at: www.olympus.eu/proven**

OLYMPUS EUROPA SE & CO. KG

Postbox 10 49 08, 20034 Hamburg, Germany
Phone: +49 40 23773-0 | www.olympus-europa.com

*Adenoma Detection Rate

¹ Leung et al. 2014; Am J Gastroenterol. 109(6):855-63

² Horimatsu et al. 2015; Int J Colorectal Dis. 30(7):947-54

GENERAL INFORMATION

Official Language

The official language of the Symposium is English.

Dates and Working Hours of the Symposium Secretariat

During the Congress the secretariat will remain open as follows:

Friday, July 08th, 2016 07:00 – 19:00

Saturday, July 09th, 2016 07:00 – 19:00

Name Badges

Your personal Symposium name badge, is your passport to the scientific sessions and exhibition area. Your name badge will be carrying a barcode with all your requested services encoded and it will be scanned in many occasions during the Symposium. Please wear your name badge visibly at all times. Entrance to any area of the Symposium will be permitted only to guests wearing their name badge issued specifically for the occasion.

Visual equipment

All meeting halls will be equipped with overhead and data projectors as well as PC for Speaker's needs. All Speakers are kindly requested to check and deliver their presentations to the visual reception at least one hour prior to their presentation. Due to changes in computer configuration, laptops will not be accommodated.

Commercial Exhibition

During the Symposium a commercial exhibition will take place at the Congress Venue.

Climate

Mediterranean Greece has a Mediterranean climate with plenty of sunshine, mild temperatures and a limited amount of rainfall.

Calling code

The international calling code of Greece is +30

The currency Euro(€) Greece is a Member-State of the European Union and uses its uniform currency – the Euro. Currency exchange rates are clearly displayed in every bank that accepts currency exchange, while credit card holders may acquire money from the ATMs of the collaborating banks. A passport is required when exchanging currencies.

Time Greece GMT +2

Electricity

The electrical current is 220 V, 50 Hz. Adapters and transformers are sold in many stores.

In case of emergency call –

Ambulance Service: 166

SOS Doctors : 1016

Duty Hospitals and Clinics: 1434

Pharmacies: 1434

Open Line for alcohol drug Addiction: 210 36 17 089

Poisoning First Aid: 210 77 93 777

Police: 100 -Tourist Police: 1571

SOCIAL EVENTS

Faculty Dinner

Friday, July 8th, 2016 will take place at Restaurant

“Tsi Tsi”. Tickets can be purchased at the registration desk at the cost of € 75,00 per person

Farewell Dinner

Saturday, July 8th, 2016 will take place at Grand Resort Lagonissi.

Tickets can be purchased at the registration desk at the cost of € 110,00 per person

On-Site Registration fees

Standard Registration (both days)	€180.00
Internists (day 2 only)	€60.00
General Practitioners (day 2 only)	€60.00
*Students (day 2 only)	€50.00
*Nurses (both days)	€80.00
*Trainees (both days)	€80.00

**Note: Trainees, Students and Nurses need to present proof of identity (e.g. Student ID).*

The free registration options do not include luncheon meals.

Registration fees include:

Admission to all scientific sessions - Admission to Symposium Exhibition Area - Symposium Material (Official Program, notepad, pen, bag, lanyard, name badge) - Certificate of attendance - Coffee breaks - Lunch breaks

Accreditation – Certificate of Attendance

The Symposium has been assessed by the Hellenic Medical Association with:

12 C.M.E. Credits for the Gastroenterologists Scientific Program

06 C.M.E. Credits for the Internists and General Practitioners Program

04 C.M.E. Credits for each Hands on Course

The C.M.E. Credits are recognized by the European Union of Medical Specialists (U.E.M.S.) under Continuing Medical Education Graduate. The completion of the assessment form, is a prerequisite for the receipt of the Certificate of Attendance for all registered participants.

Certificates of attendance and completion of the assessment forms will be available by Organizing Secretariat Desk on Saturday, July 9, 2016 after 16.00 hrs.

Important Note: Under the Hellenic Pharmaceutical Organization circular, the rate of 60% for monitoring of the scientific programme, is a prerequisite for obtaining the Certificate of Attendance. The recording of the hour is to scanners at the entrance and the exit of the halls, where the participants show the entry name card with barcode, which they receive upon registration.

What you should know about the correct count of monitoring hours (barcode system):

- The measurement of contact hours is mandatory
- The start and finish times of sessions detailed in scientific programme of the Symposium
- The system begins to "record" on the start time of each session and automatically "Stop" at the end.
- The hours waiting in the meeting rooms, breaks, lunches, assemblies, opening and closing Ceremonies are not monitored

 **Entyvio**[®]
vedolizumab



GREY/1605/0009

For product information please refer to Takeda.



www.takeda.gr

SPONSORS – SUPPORTERS

The Organizing Committee of the 3rd Athens Symposium “Gastrointestinal Cancer”, would like to express their sincere gratitude to the following Sponsors and Supporters for their contribution to the success of the Symposium:

PLATINUM SPONSORS

OLYMPUS

Your Vision, Our Future



PRINCIPAL SPONSORS



MAJOR SPONSORS



SPONSOR



SUPPORTERS

ABBVIE

AENORASIS

FERRING

NORGINE

NOVARTIS (Oncology)

PENTAX

RAFARM

MEDIA SPONSOR





MEDICAL BREAKTHROUGHS MAY COME OUT OF THE LAB. BUT THEY BEGIN IN THE HEART.

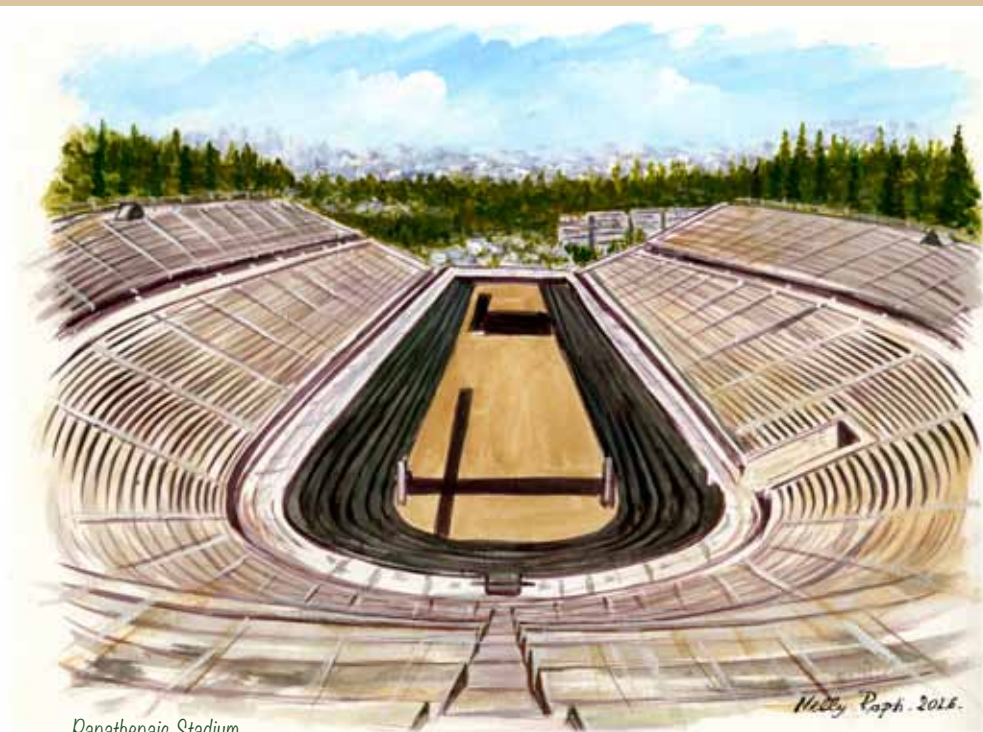
For more than a century, a very special passion has driven the people of MSD. Our goal is to develop medicines, vaccines, and animal health innovations that will improve the lives of millions. Still, we know there is much more to be done. And we're doing it, with a long-standing commitment to research and development. We're just as committed to expanding access to healthcare and working with others who share our passion to create a healthier world. Together, we'll meet that challenge. With all our heart.

To learn more about our efforts, visit msd.com



125
YEARS
SINCE 1891

4th ATHENS Symposium 2 0 1 8



Panathenaic Stadium

SAVE THE DATE

6 - 7 JULY 2018

ENDOCUFF VISION®



The hiding is over...



ENDOCUFF VISION® is the next generation of ENDOCUFF™ and has been designed to give an enhanced view of the entire colon. A single row of longer arms gently evert and flatten folds even in the ascending colon and delivers incredible tip control.

ENDOCUFF VISION® is disposable and simply pushes over the tip of all commonly used colonoscopes. Its unique hinged arms fall flat against the shaft of the colonoscope to create a smooth low friction surface during forward advancement. During withdrawal, the arms flare out and stabilize the tip, gently stretching the mucosal surface for close inspection.

ENDOCUFF VISION® :

- Delivers yet more tip control throughout the colon without compromising intubation and improving loop management.
- Gives an early and controlled view of the upstream surface of large folds so no need for repeated intubation.
- Enables detailed inspection of flexures by preventing sudden slip back and red out.
- Opens concertained tracts of sigmoid colon as the arms gently separate the folds to provide a clear view of the mucosa between them.
- Acts as a handbrake, optimising tip position during therapy and polyp retrieval.
- There really is no hiding place for polyps.

CONTENTS

Welcome letter by the Scientific Director	page 4
Welcome letter by the President of H.S.G.....	page 5
Committees	page 7
International Faculty.....	pages 10 – 11
Scientific Programme	pages 13 – 20
Moderators	page 23
Live Courses Participants.....	page 25
General Information	page 27
Sponsors – Supporters.....	page 29
4th Athens Symposium 2018.....	page 31



ADDRESSING THE WORLD'S TOUGHEST HEALTH CHALLENGES TAKES ALL OF US

That's why, combining the innovative spirit of biotech with the strength of a successful pharmaceutical company, we are going beyond conventional thinking to introduce end-to-end innovative approaches that truly make a difference for patients and contribute to a sustainable healthcare system.

AMONG THE MOST REMARKABLE COMPANIES IN THE WORLD

1st and **2nd place** respectively in the **Best Workplace Greece 2015 & 2016 competition** in the medium sized companies list (50-250 employees)

Great Place to Work Institute

2nd place among pharmaceutical companies worldwide in terms of **overall corporate reputation**, according to patients' groups

PatientView

Ranked 8th for the World's Most Admired Companies in the pharmaceuticals industry

Fortune Magazine

Among the top **5 brands worldwide**

FutureBrand

170+ Countries
28,000+ Employees around the world

115+ Employees in Greece

18 Manufacturing & R&D worldwide

16% of AbbVie's revenue is invested in R&D

10+ Programs in Phase III in the areas of Virology, Neuroscience, Immunology, Women's Health and Metabolic Disorders, Oncology and Hematology

FOCUS AREAS

IMMUNOLOGY

VIROLOGY

ONCOLOGY

HEMATOLOGY

NEUROLOGY



GR/COR/0516/0111e

www.abbvie.gr

PEOPLE. PASSION. POSSIBILITIES.

