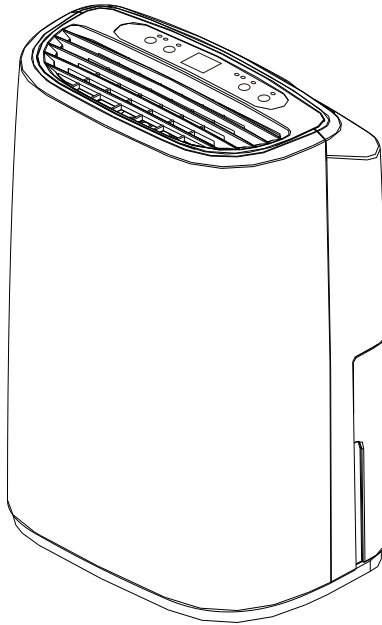


MANUAL

Dehumidifier

HD161A



Please read the manual carefully and keep them properly before using.

Dear user :

Thank you for purchasing our dehumidifier, hope it can bring comfort and convenience to your work and life. It is recommended that you keep the manual properly for future reference. Before using this product, please read the manual carefully to ensure that the product performs its best function.

Description of dry clothes

- 1.1 The dehumidifier can be used for drying in wet weather, you only need in the locker room, bathroom or storage rooms and other space laundry dried up(Note: do not drop on the machine), then open dehumidifier, dehumidifier and the humidity value set in the 30%(such as "dry clothes" or "continuous dehumidification" please click this button), direct blowing effect to better clothes.
- 1.2 The drying effect of clothing according to the thickness degree and quantity, your clothes drying space varies, takes about 3~8 hours. In principle, the thinner the clothing, the less the number, the smaller the space, the better the effect, the shorter the time, according to their own needs, dry clothes recommended continuous drainage function.

Catalog

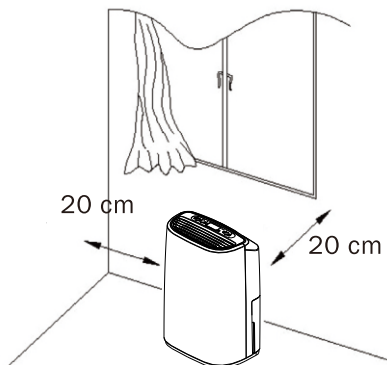
1、 Considerations.....	1
2、 Product structure.....	2
3、 Operation instructions.....	3
4、 Cleaning and maintenance.....	9
5、 Common troubleshooting.....	10
6、 Safety precautions.....	11
7、 Technical specifications.....	12

1、 Considerations

Important explanation

For the safety, please read the manual carefully and keep the manual before you use the product for reference. This product is only for the use of Home Furnishing, please use this product according to the installation and operation of this manual.

1. When cleaning or storing a dehumidifier, pull out the plug.
2. Do not soak the machine in water or near the water source.
3. Please do not place the machine near heating device or inflammable dangerous goods.
4. Do not insert the finger or stick into the air inlet or air outlet.
5. Please drain the tank according to the requirement.
6. Please ensure that the drainage pipe is installed downward so that the condensate can be discharged continuously.
7. The machine level should be maintained, to avoid placing the machine on uneven or sloping ground.
8. Do not spray water on this machine.
9. Do not spray pesticides or flammable liquids on this machine.
10. Please do not put heavy objects on the machine or let children and animals ride.
11. The machine must not be placed in the closed narrow space.
12. When power line is damaged, must be replaced by the technical staff of the company and approved or qualification.
13. If you use dry clothing function, clothing should be at least 40CM above the air outlet distance, so as to avoid water droplets on the clothes into the machine, so that the machine damaged.
14. The machine power wiring must be in accordance with national wiring rules, power line and external grounding reliable connection.
15. The fixed wiring of the machine must be equipped with an extreme speed disconnect device (air switch) with at least 3mm contact opening distance.
16. Model specification of safety tube : 3.15A .
17. When the use of objects and surrounding the machine at least need to keep a distance of 20cm, as shown in picture:

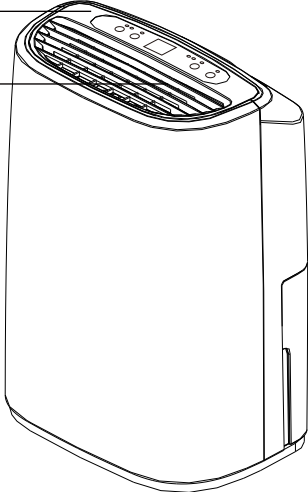


2、Product structure

Host computer

Control panel

Outlet



Handle

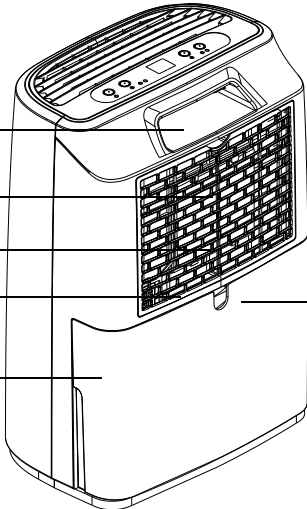
Filter

Air inlet (with filter)

Humidity sensor

Water tank

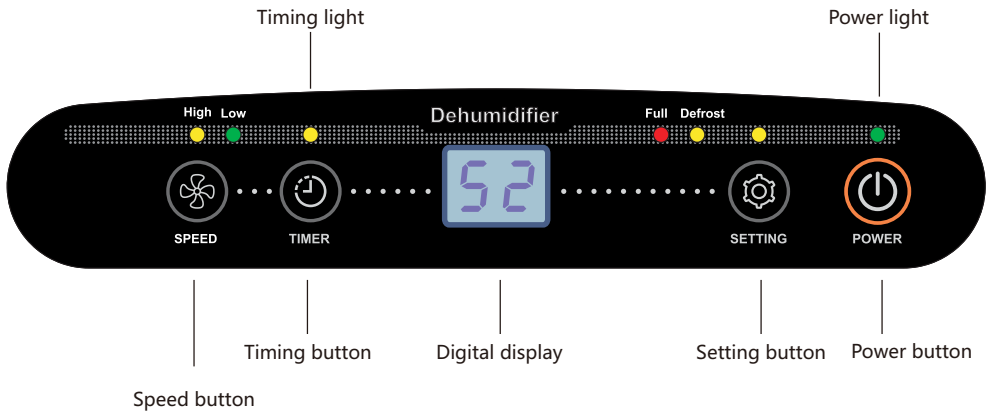
Drainage exit



Instructions

3、 Operation instructions

A、 Control panel



Press Buttons

1. Power Button

Power key: press one time is turn on, press again is shutdown . the figures and lights will turn off when machine shutdown.

2. Timer Button

Each click, 1h increase by degrees, 1-24h set range and can be set circularly; press 2 seconds, and can adjust setting value continuously, adjusted 5 times for 1 second.

3. Setting Button

Humidity set key: each click, 5%RH increase by degrees, can be set range: 30%RH ~ 80%RH, can be set circularly; Press 2 seconds, can adjust settings value continuously, adjusted 5 times a second.

4. Speed Button

Wind speed key: high, low wind speed switching.

Instructions

B. Humidity Settings

In the boot state, according to the "setting" button, you can set the setting humidity value, each click, set the humidity value increase 5RH%, set range 30 ~ 80RH%, can be set circularly. Long press "setting button", you can continuously set the humidity value, no key operation for a few seconds and then it will exit automatically. When the humidity value is set to 30 RH%, the continuous dehumidification operation is carried out.

C. Timing Setting

In the shutdown state, the timer is set to the timing boot, in the boot state, the timer is set to shutdown.

According to the "TIMER" button, you can set the time, each click, the setting time increase 1H, set range: 1 ~ 24h, can be set circularly. Long press the "TIMER" button seconds, can be continuous timing; timing time is 00, the timing invalid.

When the timing is effective, the display shows the current humidity, the timing light up; according to the "TIMER" button, the display can display the remaining timing, and automatically display the current humidity after a few seconds.

D. Wind Speed Setting

In the boot state, according to the speed button, can choose high speed or low speed.

Special Note: All settings, has memory function.

Instructions

F. Water Full Protection

When the water tank is full, the machine stops and the water full light flashing; when the water full light is removed, the water full light is off and the machine can be restarted.

G. Defrost Function

When running at a lower ambient temperature, the system will automatically determine whether there is frost, if frost will automatically defrost.

Defrosting action: fan running at high wind speed, compressor stop

Defrost display: when defrosting, defrosting lights flashing

H. Action description

Power on: compressor start after fan work a few seconds. In the boot state, restart after power off, fan start directly, but compressor will start after 3 minutes.

The shutdown: compressor stop, after a few seconds fan stop.
(Other failure or humidity reached the required, if need shutdown, fans stop need dozens of seconds).

Have 3 minutes delay protection function, means in the power on state, shutdown three minutes then to start again.

I. State Description

delay start state, power light flashed; when the machine runs, the power light is on;

When the humidity reaches the setting humidity and stops dehumidification (Humidity controlled state), the humidity number and the power light flicker

Set high wind speed, high light up; setting for low wind speed, low light up

After the timer is effective, the timing light up, otherwise the light is out

Defrosting light flashes when defrosting, on the contrary, it will off

Water full light flashes when water full, on the contrary, it will off

Instructions

J. Environmental temperature query

In the boot state, long press "TIMER" a few seconds, you can query the environment temperature, after several seconds automatically display the current humidity value.

K. Fault Code

Number	Fault code	Name of the fault
1	E1	Humidity sensor failure
2	E2	Defrost temperature sensor failure
3	E4	Environment temperature sensor fault
4	E7	Water full alarm

Attention:

1. When fault E1,E2 or E4 occurs, the machine continues to dehumidify, buzzer alarm and display fault code. Disconnect the power supply and reconnect it, the machine can still run dehumidification.
2. When the fault occurs, the buzzer alarms seconds, and the alarm can be relieved by pressing any key during the alarm period.

Note:

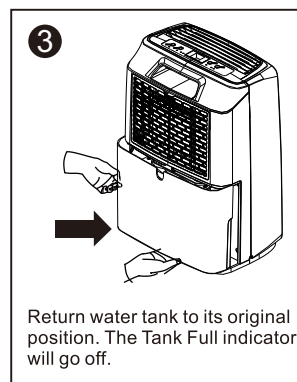
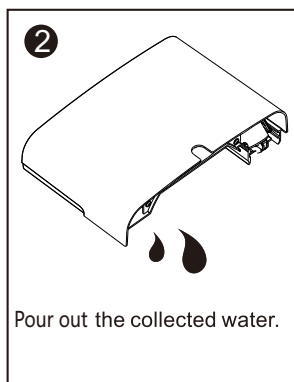
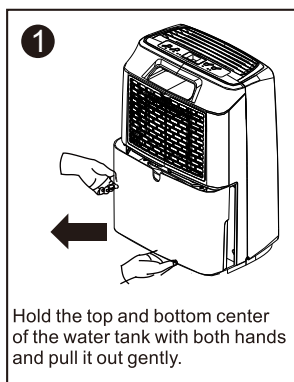
Before starting the machine, please ensure that the air outlet has been opened, otherwise the machine will overheat.

Do not pull out the power cord directly to stop the machine.

L . Water Tank Drainage

When the water tank is full, the water full indicator light flashing, and then automatically stop, at this time must empty the water tank.

Emptying the Water Tank



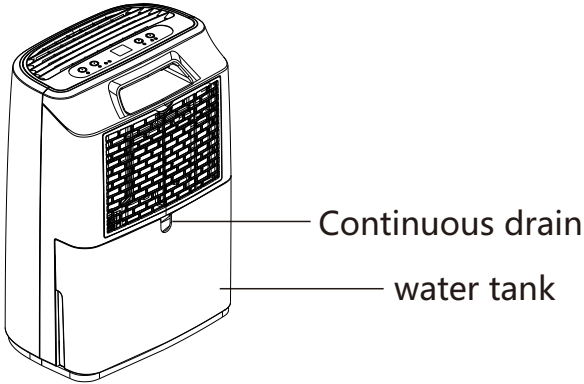
Note:

- Do not remove the floater in the water tank. If the floater of the water tank is removed, the water sensor will not be able to normally sense the water level, and the water will overflow from the water tank when the water is full.
- If the tank is dirty, only can be used in cold or warm water wash, do not use detergent, steel wool, chemical processing dust cloth, gasoline, benzene, thinner or other solvent treatment, otherwise it may cause damage to the tank Water Leakage.
- When the water tank is put in, the water tank is pressed tightly with both hands. If the water tank is not placed, the water sensor will still be started, and the dehumidifier will not be able to run.

Instructions

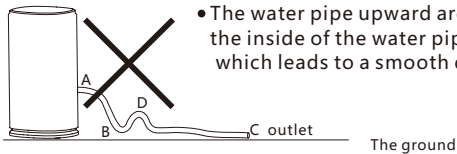
M . Continuous Drainage

The continuous drainage function can be realized by connecting the drainage pipe at the continuous drainage port



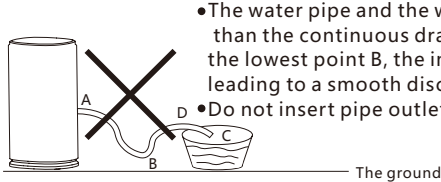
Continuous drainage Pipe installation

Picture 1: Example of error connection



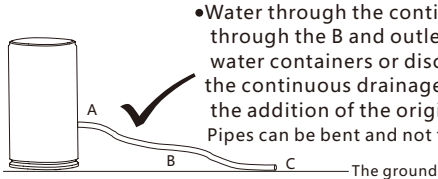
- The water pipe upward arch position D above position B, the inside of the water pipe is prone to air and accumulation, which leads to a smooth discharge through the Pipe.

Picture 2: Example of error connection



- The water pipe and the water container contact point D is lower than the continuous drain A, but higher than the water pipe at the lowest point B, the inside of the pipe prone to air and water, leading to a smooth discharge of waters through the Pipe.
- Do not insert pipe outlet C into water.

Picture 3: Example of a correct connection



- Water through the continuous drainage port A, from high to low through the B and outlet C smooth discharge, can be used to water containers or discharged into the sewer (outlet C is below the continuous drainage port of 10 cm above, do not recommend the addition of the original drainage pipe). Pipes can be bent and not folded on the ground, but cannot be partially arched.

The picture is for reference only.

4. Cleaning and maintenance

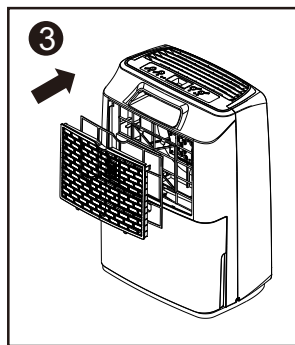
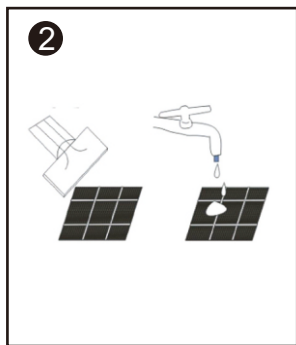
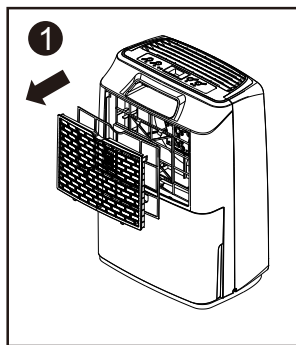
⚠ Warning

In order to avoid electric shock, the machine must be turned off before cleaning and maintenance, and unplugging the power plug.

A. Fuselage clean

Wipe the body with a soft, damp cloth.

B. Filter cleaning



1. Pull up to remove the air filter.
2. Cleaning: Run a vacuum cleaner lightly over the surface of air filter to remove dirt. If the air filter is exceptionally dirty, wash it with warm water and a mild cleanser and dry thoroughly.
3. Insert the filter into the unit smoothly.

C. Dehumidifier Storage

If you don't use the dehumidifier for a long time and want to store it, pay attention to the procedure

1. Empty any water left in the water tank.
2. Fold up the power supply cord and put it in the water tank.
3. Clean the air filter.
4. Store in a cool and dry place.

5、 Common troubleshooting

If you find that there is a problem with the operation of the machine, use the table **below to troubleshoot the problems:**

Phenomenon	Possible Cause	Solution
The unit does not operate.	Has the power cord been disconnected?	Plug the power cord into the outlet.
	Is the water tank full indicator blinking? (The tank is full or in awrong position.)	Empty the water in the water tank and then reposition the tank.
	Is the room temperature above 35°C or below 5°C	This product is not designed to be used in an environment too cold or too hot.The protection device is activated and the unit cannot be started temporarily.
	Is the room temperature between 5°C and 20°C?	Auto-defrost is in progress.The unit cannot be started temporarily.
The dehumidifying function does not work.	Air flow is not smooth.	No less than 20CM space should be set aside around the product.
	Low ambient humidity	Belong to normal phenomenon
Operation is noisy.	Is the unit tilted or unsteady?	Move the unit to as table and sturdy location.
	Clogging of intake ?	Clean up dirt at product inlet and outlet

Note: If the problem persists, please turn off and unplug the power plug, and returned to our company service.

6、Safety precautions



Do not place unit on uneven surface.



Do not insert any sharp objects into air inlet/airoutlet.



Do not operate unit near radiators, kettles or any object that releases steam.



Do not operate unit near windows or doors opening to the outdoor.



Do not obstruct air inlet and outlet.



Unplug power when the unit is not in use for an extended period.



Do not spray any liquid onto unit.



Do not put heavy objects on top of unit.



Wash the air filter once every 2 weeks with cold water. (Do not use water >40 or benzene)



When draining water continuously, make sure drain hose is not tangled.



Do not place filter directly under



Empty water tank before moving unit.

7、 Technical specifications

Model Name	Dehumidifier
Part No.	HD161A
Voltage/Frequency	110V ~ 60Hz
Humidity removal (27°C/60%RH)	0.26kg/h
Humidity removal (30°C/80%RH)	12L/D
Humidity removal (35°C/90%RH)	15.5L/D
Rated Input Power (27°C/60%RH)	173W
High temperature Power (30°C/80%RH)	210W
Max Power (35°C/90%RH)	260W
Air circulation	110m ³ /h
Noise	44dB(A)
Refrigerant/quantity	R134a/120g
Protection type of preventing electric shock	I
IP Level	IP20
Heat exchanger Max operate pressure	2.5MPa
Air-in/out side Allowed operate pressure	0.7MPa/2.0MPa
High/low pressure side Max allowed pressure	2.5MPa
Water Tank Capacity	1.8L
Dimensions	310*210*440mm
Weight	10.8kg

The Company reserves the right to change the product, the above parameters are subject to change without notice.

Remark: all the product drawings involved in this manual shall be subject to the object.

All the contents of this manual have been strictly checked and proofread, but there is possibility of incorrect typesetting or printing. Please feel free to understand