

Benchmark Test 4 *(Chapters 1–12)*

Read each question. Fill in the correct answer.

1. What are all the ways in which the figure can be classified?



- (A) quadrilateral, parallelogram
- (B) quadrilateral, parallelogram, square, rectangle
- (C) quadrilateral, parallelogram, square, rhombus, rectangle
- (D) quadrilateral, parallelogram, rectangle

2. Lani represented the length of a beetle (centimeters) in expanded notation.

$$3 \times 1 + \left(4 \times \frac{1}{100}\right) + \left(5 \times \frac{1}{1,000}\right)$$

What is this number in standard form?

- (F) 0.345
- (G) 3.0405
- (H) 3.045
- (I) 3.45

3. A company assembles marble bags with 18 marbles to a bag. About how many bags does the company need for 730 marbles?

- (A) 80 bags
- (B) 50 bags
- (C) 40 bags
- (D) 30 bags

4. Erin hiked 5.6 miles in the morning and 4.25 miles in the afternoon. How many miles did she hike in all?

- (F) 1.35 miles
- (G) 1.45 miles
- (H) 9.31 miles
- (I) 9.85 miles

5. The most visitors to Yosemite National Park in one year is 4,190,557. What is the value of the digit 9 in this number?

- (A) 900,000
- (B) 90,000
- (C) 900
- (D) 90

6. A deli made \$1,080 on 24 deluxe platters. How much money would the deli make on 35 deluxe platters?

- (A) \$1,575
- (B) \$1,555
- (C) \$1,475
- (D) \$1,455

Benchmark Test 4 *(continued)*

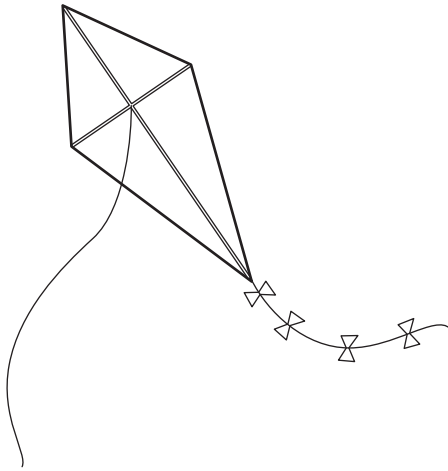
7. Omar pours $\frac{2}{3}$ cup of juice each morning for himself and his two brothers. How many quarts of juice does he use in 30 days?

- (A) $7\frac{1}{2}$ quarts
- (B) 15 quarts
- (C) 20 quarts
- (D) 30 quarts

9. A recipe for apricot stuffing calls for $1\frac{1}{2}$ pounds of apricots. If Gracie increases the recipe $2\frac{1}{2}$ times, how many pounds of apricots will she need?

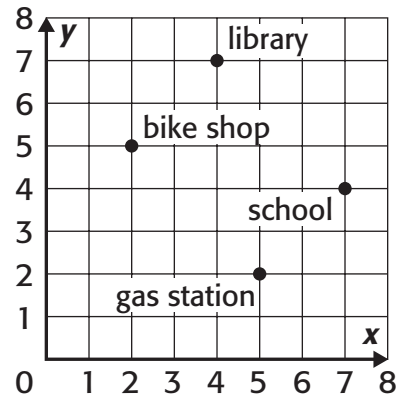
- (A) $7\frac{1}{2}$ pounds
- (B) 4 pounds
- (C) $3\frac{3}{4}$ pounds
- (D) 2 pounds

8. A kite maker uses 125 feet of string for each kite he makes. How many feet of string does he need for 75 kites?



- (F) 8,055 ft
- (G) 8,275 ft
- (H) 9,075 ft
- (I) 9,375 ft

10. Which place is located at (4, 7)?



- (F) bike shop
- (G) gas station
- (H) library
- (I) school

Benchmark Test 4 (continued)

11. Chloe recorded the lengths of several walking stick insects.

Walking Stick	Length (cm)
A	10.24
B	11.1
C	10.2
D	11.05

Which list shows the lengths in order from *least* to *greatest*?

- Ⓐ 10.24, 10.2, 11.1, 11.05
 Ⓑ 10.2, 10.24, 11.05, 11.1
 Ⓒ 10.24, 10.2, 11.05, 11.1
 Ⓓ 11.1, 11.05, 10.24, 10.2
-
12. Mrs. Hinshaw used $2\frac{3}{4}$ pounds of asparagus and $4\frac{1}{8}$ pounds of shrimp to make stir fry. How many more pounds of shrimp did she use than asparagus?
- Ⓐ $1\frac{3}{8}$ pounds
 Ⓑ $1\frac{1}{2}$ pounds
 Ⓒ $1\frac{3}{4}$ pounds
 Ⓓ $2\frac{3}{8}$ pounds

13. The typical mass of a bullfrog is 0.5 kilogram. What is the mass of 3 bullfrogs in grams?

- Ⓐ 1.5 grams
 Ⓑ 15 grams
 Ⓒ 150 grams
 Ⓓ 1,500 grams

14. Two packages weigh 3.92 pounds and 2.8 pounds. How many times heavier is the first package than the second?

- Ⓐ 0.7 times
 Ⓑ 1.12 times
 Ⓒ 1.4 times
 Ⓓ 1.84 times

15. Davis wants to pour 5 gallons of punch into $\frac{1}{2}$ gallon jugs. How many jugs will he need?

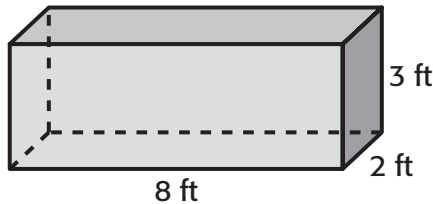
- Ⓐ $2\frac{1}{2}$
 Ⓑ $5\frac{1}{2}$
 Ⓒ 10
 Ⓓ 15

Benchmark Test 4 *(continued)*

16. Angelo used contact paper to cover shelves in a pantry and cupboard. He used $\frac{2}{3}$ of a roll for the cupboard and $\frac{5}{6}$ of a roll for the pantry. How much more contact paper did he use for the pantry?

- $\frac{1}{6}$ roll
- $\frac{1}{3}$ roll
- $\frac{1}{2}$ roll
- $\frac{2}{3}$ roll

17. Audrey bought a cedar chest to store her sweaters. What is the volume of the cedar chest?



- (A) 18 ft^3
- (B) 26 ft^3
- (C) 38 ft^3
- (D) 48 ft^3

18. A pet store sold 8 hamsters for \$10 each and 8 mice for \$3 each. Which numerical expression represents this situation?

- (F) $8 + 10 \times 8 + 3$
- (G) $(8 \times 10) \times (8 \times 3)$
- (H) $8 \times 8 (10 + 3)$
- (I) $(8 \times 10) + (8 \times 3)$

19. An airline had 9,453,607 passengers in September. It had fewer passengers in November. Which could be the number of passengers in November?

- (A) 9,481,886
- (B) 9,454,647
- (C) 9,446,879
- (D) 9,504,903

20. Grady bought some fish for \$17.43 and some fish food for \$3.86. About how much more did Grady spend on the fish than on the fish food?

- (F) \$12
- (G) \$13
- (H) \$15
- (I) \$21

Benchmark Test 4 (continued)

- 21.** Michaela wrote her name in block letters. She colored $\frac{3}{4}$ of the letters pink. She drew green dots on $\frac{1}{2}$ of the pink letters. What fraction of the letters is pink with green dots?
- Ⓐ $\frac{1}{4}$
 Ⓑ $\frac{3}{8}$
 Ⓒ $\frac{6}{8}$
 Ⓓ $\frac{5}{4}$
-
- 22.** Ricardo spends $2\frac{2}{3}$ hours practicing soccer on Mondays and Wednesdays. He spends $1\frac{3}{4}$ hours practicing soccer on Tuesdays, Thursdays, and Fridays. How many hours in all does Ricardo spend practicing soccer?
- Ⓕ $8\frac{11}{12}$ hours
 Ⓖ $9\frac{3}{4}$ hours
 Ⓗ $10\frac{7}{12}$ hours
 Ⓙ $11\frac{1}{2}$ hours
-
- 23.** Mr. Sims wants to buy fencing for a square lot that is 30.5 feet on each side. How many feet of fencing does he need?
- Ⓐ 61 feet
 Ⓑ 120.5 feet
 Ⓒ 122 feet
 Ⓓ 930.25 feet
-
- 24.** A gym equally divided 330 towels so that each swimmer in a meet would get 4 towels. How many swimmers are at the meet?
- Ⓕ 80 swimmers
 Ⓖ 82 swimmers
 Ⓗ 83 swimmers
 Ⓙ 84 swimmers
-
- 25.** Two sides of a triangular sign are 24 inches long. The third side is 18 inches long. What is the perimeter of the sign in feet?
- Ⓒ $3\frac{1}{2}$ feet
 Ⓓ 4 feet
 Ⓔ $4\frac{1}{3}$ feet
 Ⓕ $5\frac{1}{6}$ feet

Benchmark Test 4 *(continued)*

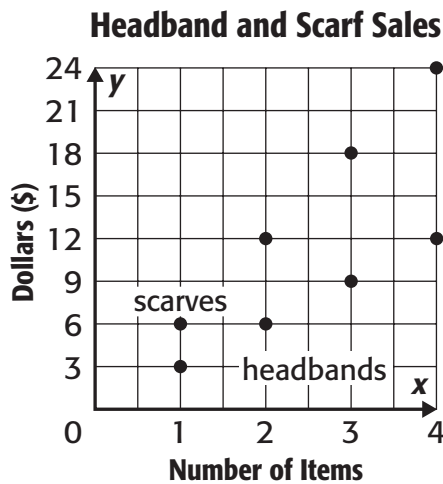
26. Cabins at a resort can sleep up to 48 guests. How many guests can 14 cabins sleep?

- Ⓕ 542 guests
- Ⓖ 572 guests
- Ⓓ 672 guests
- Ⓘ 682 guests

28. The length of a robin's egg is 23.05 millimeters (mm). The length of a wren's egg is 20.85 millimeters. How much longer is the robin's egg?

- Ⓐ 2.2 mm
- Ⓒ 2.75 mm
- Ⓗ 3.2 mm
- Ⓙ 3.8 mm

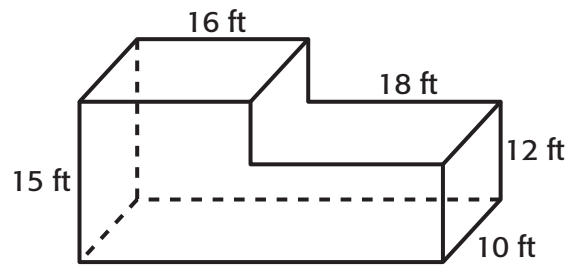
27. Mei sells headbands for \$3 each and scarves for \$6 each. The graph shows the dollar sales for each number of item.



How much more does Mei make selling scarves than headbands?

- Ⓐ twice as much
- Ⓑ three times as much
- Ⓒ from 2 to 3 times as much
- Ⓓ \$12 more for each scarf

29. What is the volume of the storage building?



- Ⓐ 2,400 ft³
- Ⓑ 4,160 ft³
- Ⓒ 4,460 ft³
- Ⓓ 4,560 ft³

30. A medium apple weighs about $\frac{1}{4}$ pound. How many ounces does a bag of 8 medium apples weigh?

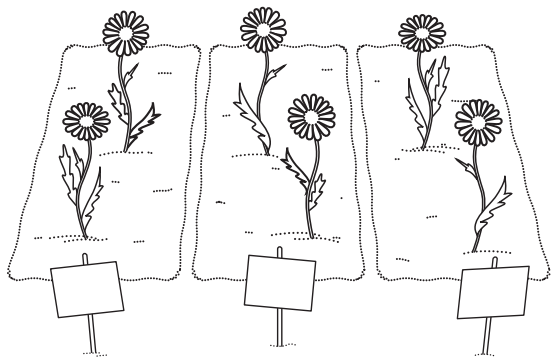
- Ⓕ 64 ounces
- Ⓓ 32 ounces
- Ⓗ 16 ounces
- Ⓙ 2 ounces

Benchmark Test 4 *(continued)*

31. Casey feeds her pot-bellied pig $1\frac{1}{3}$ cups of feed each day. How many cups of feed does her pig eat in 14 days?

- Ⓐ $4\frac{2}{3}$ cups
- Ⓑ $14\frac{2}{3}$ cups
- Ⓒ $18\frac{2}{3}$ cups
- Ⓓ $23\frac{1}{3}$ cups

32. Adam divided his garden into 3 equal sections. The total area of the garden is 49.2 square feet. What is the area of each section?



- Ⓕ 8.2 square feet
- Ⓖ 13.9 square feet
- Ⓗ 14.8 square feet
- Ⓙ 16.4 square feet

33. A hatchling Burmese python is 0.6 meter long. It can grow to be as long as 7 meters. If the hatchling grows to 7 meters, how many centimeters does it grow?

- Ⓐ 700 centimeters
- Ⓑ 640 centimeters
- Ⓒ 70 centimeters
- Ⓓ 64 centimeters

34. What is the value of the expression?

$$10 + 5 \times \{12 \div [(9 - 7) \times 3]\}$$

- Ⓐ 20
- Ⓑ 30
- Ⓒ 100
- Ⓓ 270

35. Six pancakes have 72 grams (g) of carbohydrates. How many grams of carbohydrates are in one pancake, on average?

- Ⓐ 12 g
- Ⓑ 66 g
- Ⓒ 78 g
- Ⓓ 432 g

Benchmark Test 4 *(continued)*

- 36.** In a class vote on favorite vegetables, $\frac{5}{12}$ of the students voted for corn and $\frac{5}{12}$ voted for carrots. What fraction of the class did **not** vote for corn or carrots?

- $\frac{1}{6}$
- $\frac{1}{2}$
- $\frac{2}{3}$
- $\frac{5}{6}$

- 37.** Bobbie is getting ready for a marathon. She ran a total of 600 miles in the past 50 days. How many miles did she run each day on average?



- (A) 10 miles
- (B) 12 miles
- (C) 14 miles
- (D) 120 miles

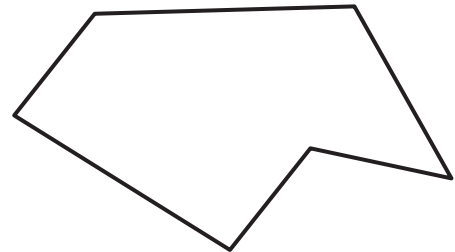
- 38.** A grey whale's mass is about 85 kilograms. What is its mass in grams?

- (F) 8,500 g
- (G) 85,000 g
- (H) 850 g
- (I) 58,000 g

- 39.** In Kip's class, $\frac{3}{20}$ of the students are wearing sandals. What is this fraction written as a decimal?

- (A) 0.32
- (B) 0.3
- (C) 0.15
- (D) 0.105

- 40.** What is the name of the polygon?



- (F) quadrilateral
- (G) pentagon
- (H) octagon
- (I) hexagon

Benchmark Test 4 (continued)

- 41.** Jordan saved the same amount of money each week for 7 weeks to pay for summer camp. He saved \$441 in all. The camp costs \$245 with another \$5 per day for activity fees. How much did Jordan save each week?
- (A) \$28
 (B) \$49
 (C) \$63
 (D) \$98
-
- 42.** Ethan bought 2 action figures for \$25 each at a science fiction fair. He won an auction for a plastic sword, and he got a deal on 5 comic books for \$9 each. He spent \$102 altogether. How much did Ethan pay for the plastic sword?
- (A) \$7
 (B) \$16
 (C) \$27
 (D) \$32
-
- 43.** Jacqui has $3\frac{1}{2}$ yards of fabric to make a costume. She used $\frac{1}{4}$ of the fabric to make a hat. How much of the fabric did she use?
- (A) $\frac{3}{4}$ yard
 (B) $\frac{7}{8}$ yard
 (C) 1 yard
 (D) $1\frac{1}{8}$ yards
-
- 44.** A walk-a-thon raised \$998.50. If 10 charities split the money equally, how much will each charity receive?
- (F) \$9.99
 (G) \$98.50
 (H) \$99.85
 (I) \$9,985
-
- 45.** Carlos paddled a canoe at an average rate of 6.32 miles per hour. How far did he travel in 2.5 hours?
- (A) 15.8 miles
 (B) 15.7 miles
 (C) 15.69 miles
 (D) 158 miles

