



General Information

Introduction.....V350-2

Typical Sealant Placement Details.....V350-3

Fin Installation Details

Wood Frame Construction with Vinyl SidingV350-4

Wood Frame Construction with Wood TrimV350-7

Wood Frame Construction with Brick VeneerV350-10

Wood Frame Construction with Stucco.....V350-13

Steel Stud Construction with Water-Managed Exterior Insulation and Finish System.....V350-15

Block Frame

Block Frame Installation Details.....V350-17

Block Construction with Brick Veneer using screws through frameV350-18

Flush Flange Replacement Installation Details

Wood Frame Construction with Stucco.....V350-20

Renovation Replacement Installation Details

Pocket Replacement.....V350-21

The information published in this document is believed to be accurate at the time of publication. However, because we are constantly working to improve our products, specifications are subject to change without notice. Consult your local Pella representative for up-to-date product information.



This section presents typical construction details and available for single units.

The objectives of installation systems are to:

- Secure the attachment of the door to the wall
- Limit air and water infiltration
- Allow for expansion and contraction

Important

Determining and meeting the structural load requirements and design of the rough opening is the responsibility of the architect or engineer. Door frame systems are not designed to support additional elements or components of the building wall system.

Installation Methods

Integral Fins, Frame Screws and Flush Flange are the basic attachment methods for the Pella® 350 Series doors. Integral Fin and Flush Flange methods require the frame to be installed from the exterior of the building. Integral Fin units must be installed prior to the application of the exterior wall cladding. Block frame units may be installed (using the frame screw method) from either the exterior or interior.

- **Integral Fin Installation** – Allows the door frame to be integrated into the building's weather resistive barrier (wrap) using the Pella SmartFlash™ Tape installation method. Intended for use with lap siding, brick veneer or other similar cladding material.
- **Frame Screw Installation** – applicable in new construction when installing units into concrete block, poured concrete or pre-cast concrete walls. Also applicable for replacement door situations where it is not practical to use installation fins.
- **Flush Flange Installation** – applicable when replacing existing aluminum sliding doors in stucco. This method requires the removal of the existing door sill; however, the existing frame jambs and head remain in the opening, minimizing damage to the stucco.

Important Installation Procedures

- When rigid insulation or other compressible sheathing is used, on walls where the integral fin installation method will be used, provide solid blocking for fin attachment.
- Shim unit in the opening plumb level and square.
- Provide a primary and secondary air and water seal around the perimeter of the unit.
- **Primary Seal** – Seal the unit to the exterior finish material.
- **Secondary Seal** (Integral fin installations) – Apply Pella SmartFlash™ foil backed butyl window and door flashing tape (or equivalent) at rough opening sill and over installation fins at head and jambs in watershed order. See product installation instructions for step by step instructions.
- **Provide an Interior Air Seal** – Apply backer rod and sealant for commercial installations. Apply continuous 1" bead of low expansion, low pressure polyurethane insulating window and door foam sealant for residential applications. (DO NOT use high pressure or latex foams.)

Note: Commercial and/or large complex openings may require additional installation design considerations and attachments.

General Notes

- Details shown are not intended to reflect complete installation procedures, however they do reflect basic installation concepts. Refer to the installation instructions provided with the product for step by step instructions.
- Details show various wall systems. Details with other Pella products in the same wall construction will be similar.
- Figures in brackets following or adjacent to dimensions are International [metric] equivalents in millimeters. For metric equivalents other than those shown, multiply dimensions in inches by 25.4.
- Your local Pella sales representative can assist with other more complex and unique applications.



350 Series Installation Details

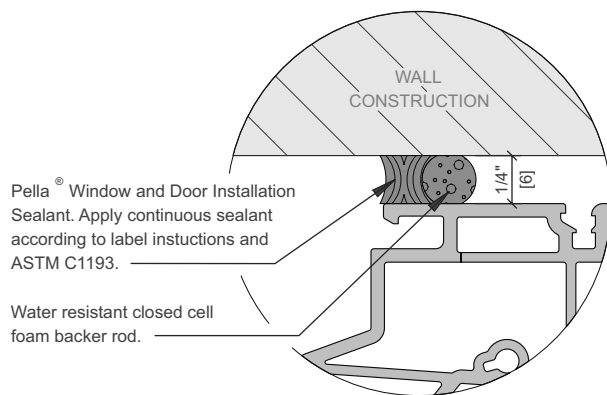
Typical Sealant Placement Details

Proper application of perimeter sealant to prevent leakage around windows and doors is the responsibility of the installer.

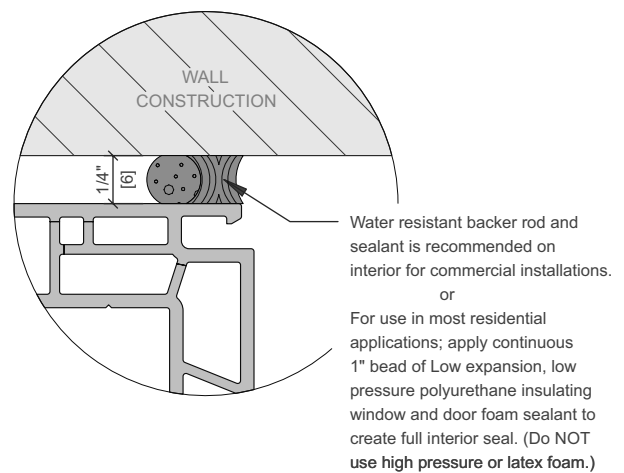
Use Pella Window and Door Installation Sealant or equivalent high quality, multi-purpose sealant. Typical sealant placement details are shown below. Apply sealants according to their label directions and ASTM C1193.

Special Note—Some manufacturers of sealants recommend or require the use of primers to ensure adequate adhesion to painted porous surfaces.

TYPICAL EXTERIOR
PERIMETER SEALANT DETAIL



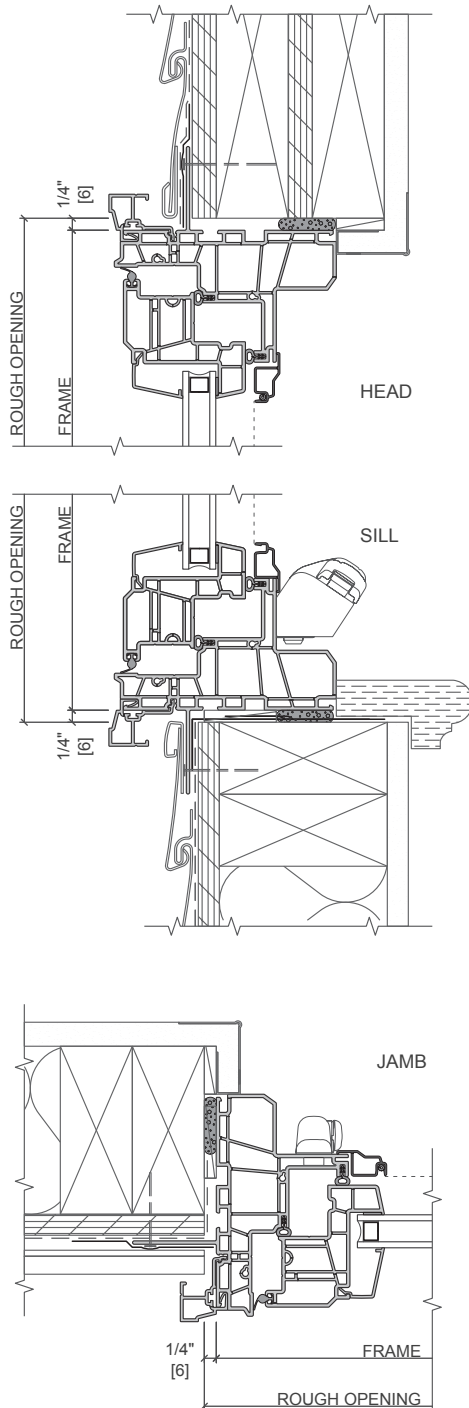
TYPICAL INTERIOR
PERIMETER SEALANT DETAIL





350 Series Installation Details

Casement with Integral Fin and J-Channel Wood Frame Construction with Vinyl Siding (2-9/16" wall depth)



Water-resistant barrier by others

Continuous water-resistive barrier attached to the wall sheathing.

Attach unit to wall construction with nails or screws at every other pre-punched hole in the installation fin.

PELLA SMARTFLASH™ FOIL BACKED WINDOW AND DOOR FLASHING TAPE

Integrate the window and door flashing tape into the wall system.

Low expansion, low pressure polyurethane insulating window and door foam sealant - (DO NOT use high pressure or latex foams)

Apply a continuous 1" bead of insulating foam to provide a full interior seal.

Interior sill trim by others

Scale 3" = 1' 0"

Items in bold are available from Pella.

These details are for typical single punch openings.

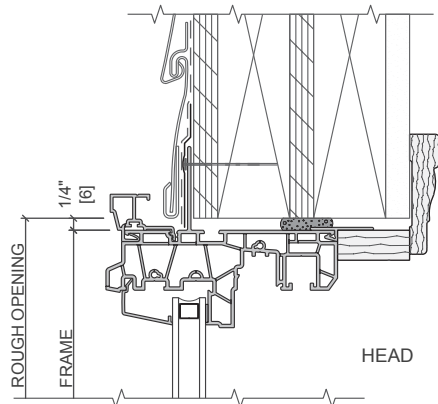
See page 3 for typical sealant details.

Refer to the appropriate Vinyl Window and Door Manufactured by Pella Installation Instruction for step-by-step instructions.



350 Series Installation Details

Single-Hung with Integral Fin and J-Channel Wood Frame Construction with Vinyl Siding (2-9/16" wall depth)



WATER-RESISTANT BARRIER BY OTHERS

Continuous water-resistive barrier attached to the wall sheathing.

Attach unit to wall construction with nails or screws at every other pre-punched hole in the installation fin.

PELLA SMARTFLASH™ FOIL BACKED WINDOW AND DOOR FLASHING TAPE

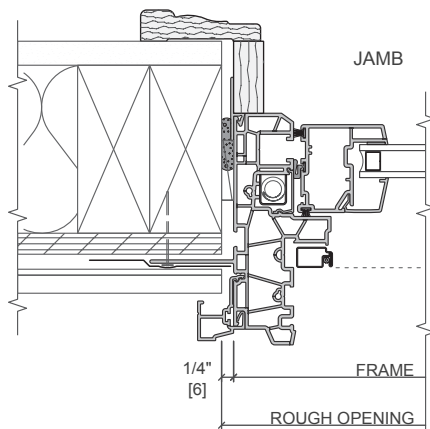
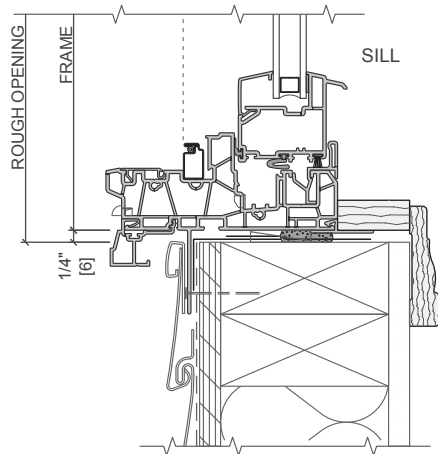
Integrate the window and door flashing tape into the wall system.

LOW EXPANSION, LOW PRESSURE POLYURETHANE INSULATING WINDOW AND DOOR FOAM SEALANT - (DO NOT USE HIGH PRESSURE OR LATEX FOAMS)

Apply a continuous 1" bead of insulating foam to provide a full interior seal.

FACTORY APPLIED JAMB EXTENSION (OPTIONAL)

PELLA 2-1/2" COLONIAL-1 TRIM (#30AX) (OPTIONAL)



Scale 3" = 1' 0"

Items in bold are available from Pella.

These details are for typical single punch openings.

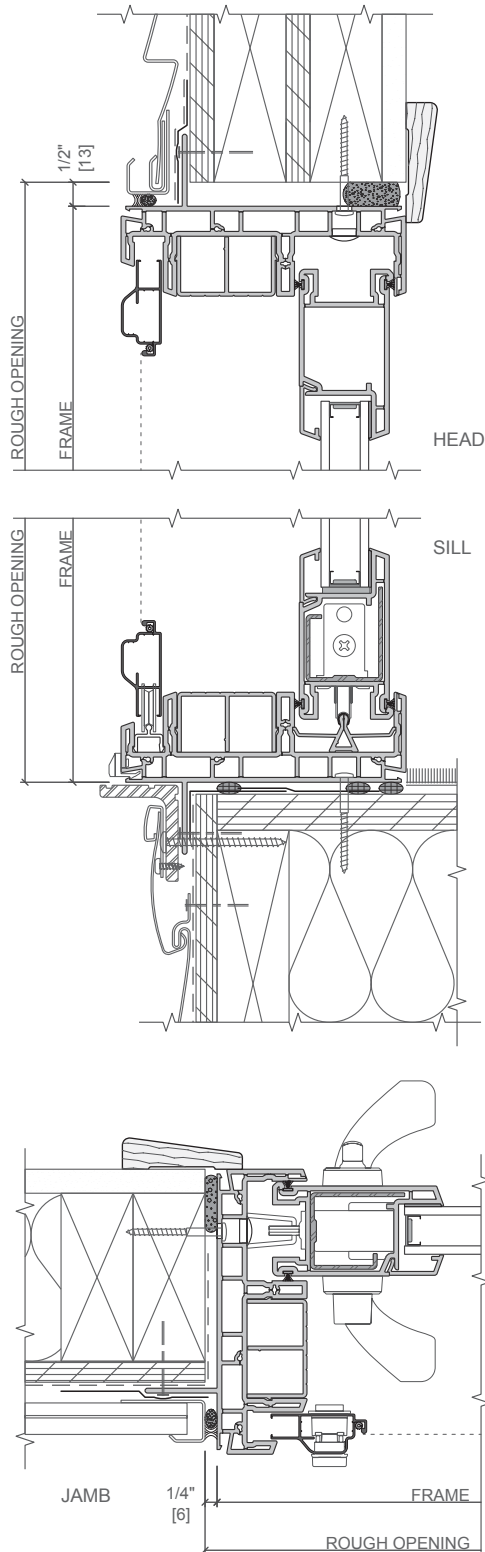
See page 3 for typical sealant details.

Refer to the appropriate Vinyl Window and Door Manufactured by Pella Installation Instruction for step-by-step instructions.



350 Series Installation Details

Sliding Door with Integral Fin and J-Channel Wood Frame Construction with Vinyl Siding



Water-resistant barrier by others

Continuous water-resistive barrier applied to the wall sheathing.

Attach unit to wall construction with nails or screws at every other pre-punched hole in the installation fin and with frame screws.

PELLA SMARTFLASH™ FOIL BACKED WINDOW AND DOOR FLASHING TAPE

Integrate the window and door flashing tape into the wall system.

PELLA WINDOW AND DOOR INSTALLATION SEALANT AND WATER RESISTANT BACKER ROD.

Apply continuous sealant according to label directions and ASTM C1193.

VINYL J-MOLD BY OTHERS

LOW EXPANSION, LOW PRESSURE POLYURETHANE INSULATING WINDOW AND DOOR FOAM SEALANT - (DO NOT USE HIGH PRESSURE OR LATEX FOAMS)

Apply a continuous 1" bead of insulating foam to provide a full interior seal.

EXTERIOR BLOCKING AT SILL BY OTHERS

PELLA 2-1/2" RANCH-1 TRIM (#30AY) (OPTIONAL)

Scale 3" = 1' 0"

Items in bold are available from Pella.

These details are for typical single punch openings.

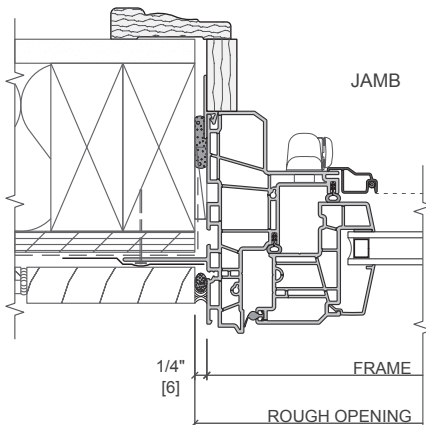
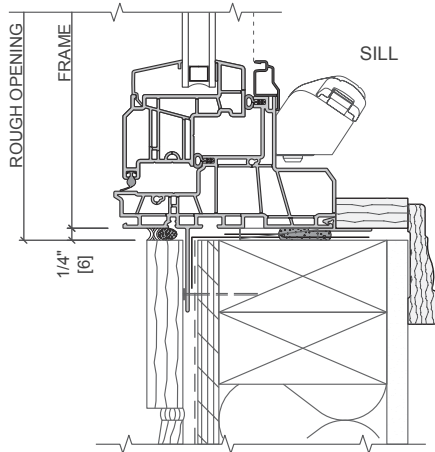
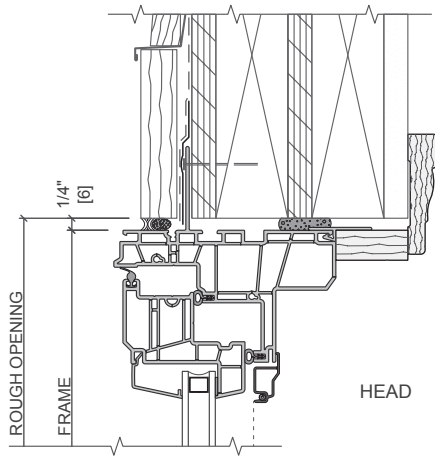
See page 3 for typical sealant details.

Refer to the appropriate Pella® 350 Series Installation Instruction for step-by-step instructions.



350 Series Installation Details

Casement with Integral Fin Wood Frame Construction with Wood Trim



WATER RESISTANT BARRIER BY OTHERS

Continuous water-resistive barrier attached to the wall sheathing.

FLASHING BY OTHERS

Metal head flashing.

SHIM AND PLUMB UNITS AS REQUIRED BY OTHERS.

Attach unit to wall construction with nails or screws at every other pre-punched hole in the installation fin.

PELLA SMARTFLASH™ FOIL BACKED BUTYL WINDOW AND DOOR FLASHING TAPE

Integrate the window and door flashing tape into the wall system.

PELLA WINDOW AND DOOR INSTALLATION SEALANT AND WATER RESISTANT BACKER ROD.

Apply continuous sealant according to label directions and ASTM C1193.

LOW EXPANSION, LOW PRESSURE POLYURETHANE INSULATING WINDOW AND DOOR FOAM SEALANT - (DO NOT USE HIGH PRESSURE OR LATEX FOAMS)

Apply a continuous 1" bead of insulating foam to provide a full interior seal.

FACTORY APPLIED JAMB EXTENSION (OPTIONAL)

PELLA COLONIAL-1 TRIM (#30AX) (OPTIONAL)

Scale 3" = 1' 0"

Items in bold are available from Pella.

These details are for typical single punch openings.

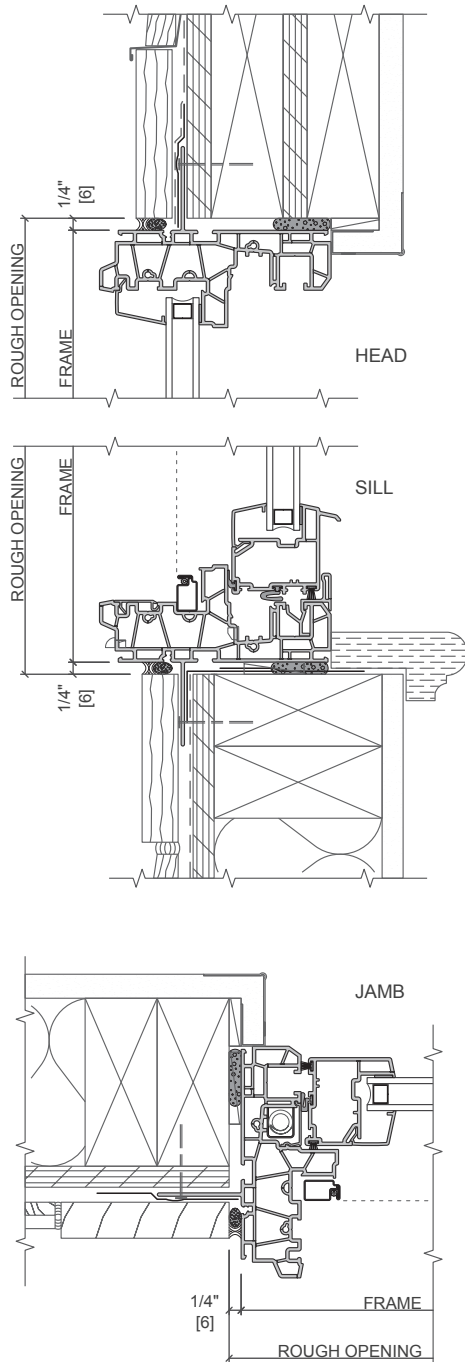
See page 3 for typical sealant details.

Refer to the appropriate Vinyl Window and Door Manufactured by Pella Installation Instruction for step-by-step instructions.



350 Series Installation Details

Single-Hung with Integral Fin Wood Frame Construction with Wood Trim



WATER RESISTANT BARRIER BY OTHERS

Continuous water-resistive barrier attached to the wall sheathing.

FLASHING BY OTHERS

Metal head flashing.

SHIM AND PLUMB UNITS AS REQUIRED BY OTHERS.

Attach unit to wall construction with nails or screws at every other pre-punched hole in the installation fin.

PELLA SMARTFLASH™ FOIL BACKED BUTYL WINDOW AND DOOR FLASHING TAPE

Integrate the window and door flashing tape into the wall system.

PELLA WINDOW AND DOOR INSTALLATION SEALANT AND WATER RESISTANT BACKER ROD.

Apply continuous sealant according to label directions and ASTM C1193.

LOW EXPANSION, LOW PRESSURE POLYURETHANE INSULATING WINDOW AND DOOR FOAM SEALANT - (DO NOT USE HIGH PRESSURE OR LATEX FOAMS)

Apply a continuous 1" bead of insulating foam to provide a full interior seal.

INTERIOR SILL TRIM BY OTHERS

Scale 3" = 1' 0"

Items in bold are available from Pella.

These details are for typical single punch openings.

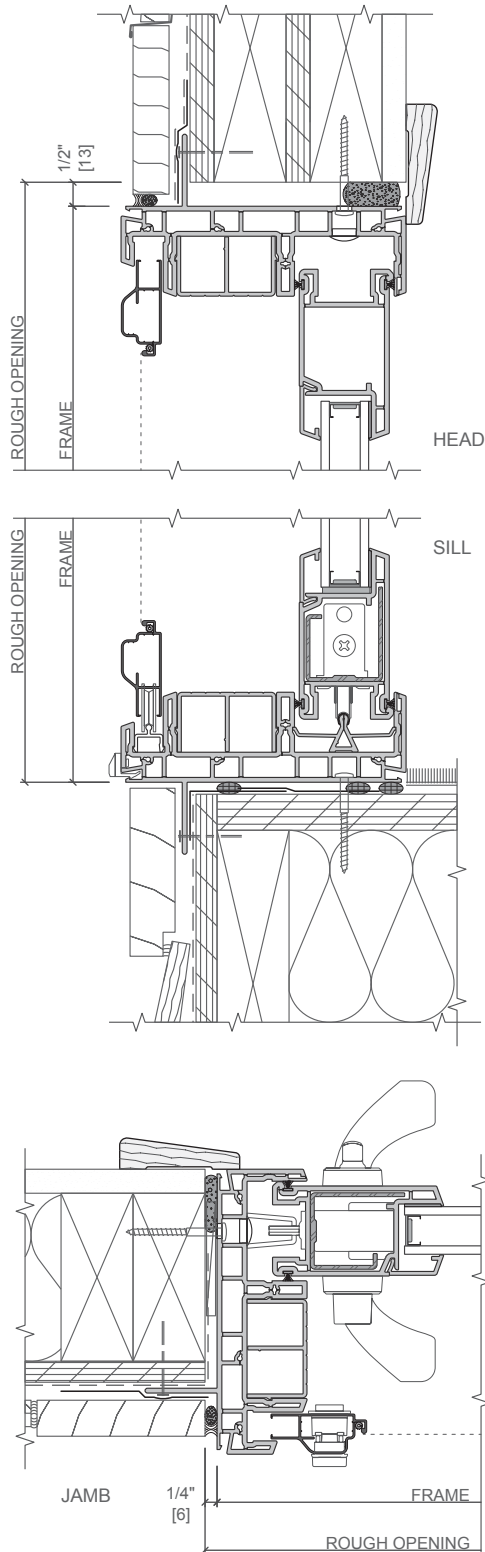
See page 3 for typical sealant details.

Refer to the appropriate Vinyl Window and Door Manufactured by Pella Installation Instruction for step-by-step instructions.



350 Series Installation Details

Sliding Door with Integral Fin Wood Frame Construction with Wood Trim



WATER-RESISTANT BARRIER BY OTHERS

Continuous water-resistive barrier applied to the wall sheathing.

FLASHING BY OTHERS

Metal head flashing.

Metal sill flashing.

Attach unit to wall construction with nails or screws at every other pre-punched hole in the installation fin and with frame screws.

PELLA SMARTFLASH™ FOIL BACKED BUTYL WINDOW AND DOOR FLASHING TAPE

Integrate the window and door flashing tape into the wall system.

PELLA WINDOW AND DOOR INSTALLATION SEALANT AND WATER RESISTANT BACKER ROD.

Apply continuous sealant according to label directions and ASTM C1193.

LOW EXPANSION, LOW PRESSURE POLYURETHANE INSULATING WINDOW AND DOOR FOAM SEALANT - (DO NOT USE HIGH PRESSURE OR LATEX FOAMS)

Apply a continuous 1" bead of insulating foam to provide a full interior seal.

EXTERIOR WOOD TRIM BY OTHERS

PELLA 2-1/2" RANCH-1 TRIM (#30AY) (OPTIONAL)

Scale 3" = 1' 0"

Items in bold are available from Pella.

These details are for typical single punch openings.

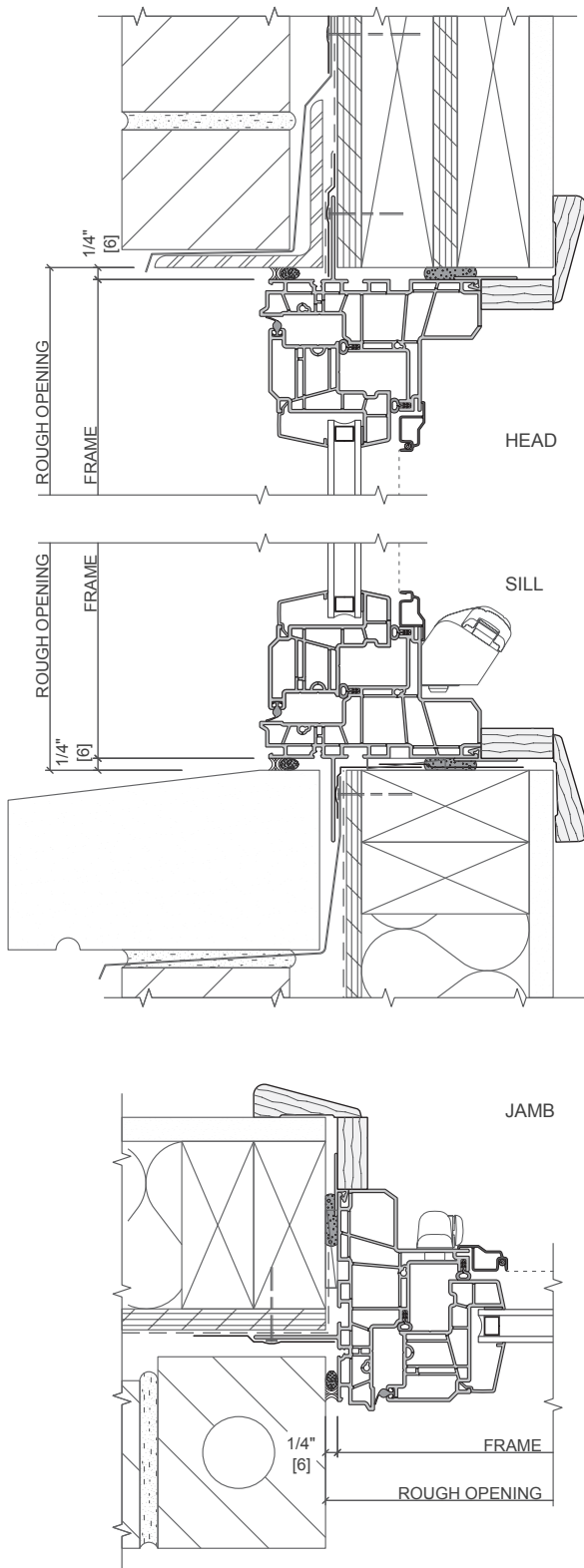
See page 3 for typical sealant details.

Refer to the appropriate Pella® 350 Series Installation Instruction for step-by-step instructions.



350 Series Installation Details

Casement with Integral Fin Wood Frame Construction with Brick Veneer



WATER-RESISTANT BARRIER BY OTHERS

Continuous water-resistive barrier attached to the wall sheathing.

THROUGH-WALL CAVITY FLASHING WITH WEEPS AT HEAD AND SILL BY OTHERS

Attach unit to wall construction with nails or screws at every other pre-punched hole in the installation fin.

PELLA SMARTFLASH™ FOIL BACKED BUTYL WINDOW AND DOOR FLASHING TAPE

Integrate the window and door flashing tape into the wall system.

Brick return at jamb to close cavity and provide backing for backer rod and sealant.

PELLA WINDOW AND DOOR INSTALLATION SEALANT AND WATER RESISTANT BACKER ROD.

Apply continuous sealant according to label directions and ASTM C1193.

LOW EXPANSION, LOW PRESSURE POLYURETHANE INSULATING WINDOW AND DOOR FOAM SEALANT - (DO NOT USE HIGH PRESSURE OR LATEX FOAMS)

Apply a continuous 1" bead of insulating foam to provide a full interior seal.

FACTORY APPLIED JAMB EXTENSION (OPTIONAL)

INTERIOR TRIM BY OTHERS

Scale 3" = 1' 0"

Items in bold are available from Pella.

These details are for typical single punch openings.

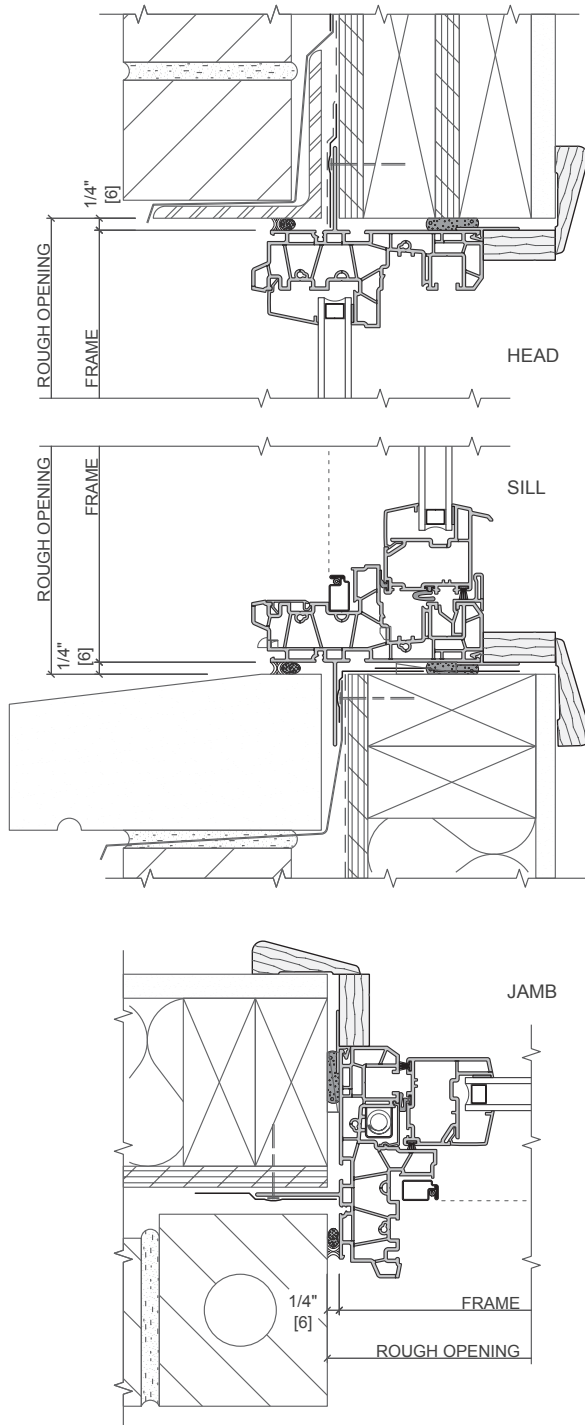
See page 3 for typical sealant details.

Refer to the appropriate Vinyl Window and Door Manufactured by Pella Installation Instruction for step-by-step instructions.



350 Series Installation Details

Single-Hung with Integral Fin Wood Frame Construction with Brick Veneer



WATER-RESISTANT BARRIER BY OTHERS

Continuous water-resistive barrier attached to the wall sheathing.

THROUGH-WALL CAVITY FLASHING WITH WEEPS AT HEAD AND SILL BY OTHERS

Attach unit to wall construction with nails or screws at every other pre-punched hole in the installation fin.

PELLA SMARTFLASH™ FOIL BACKED BUTYL WINDOW AND DOOR FLASHING TAPE

Integrate the window and door flashing tape into the wall system.

Brick return at jamb to close cavity and provide backing for backer rod and sealant.

PELLA WINDOW AND DOOR INSTALLATION SEALANT AND WATER RESISTANT BACKER ROD.

Apply continuous sealant according to label directions and ASTM C1193.

LOW EXPANSION, LOW PRESSURE POLYURETHANE INSULATING WINDOW AND DOOR FOAM SEALANT - (DO NOT USE HIGH PRESSURE OR LATEX FOAMS)

Apply a continuous 1" bead of insulating foam to provide a full interior seal.

FACTORY APPLIED JAMB EXTENSION (OPTIONAL)

INTERIOR TRIM BY OTHERS

Scale 3" = 1' 0"

Items in bold are available from Pella.

These details are for typical single punch openings.

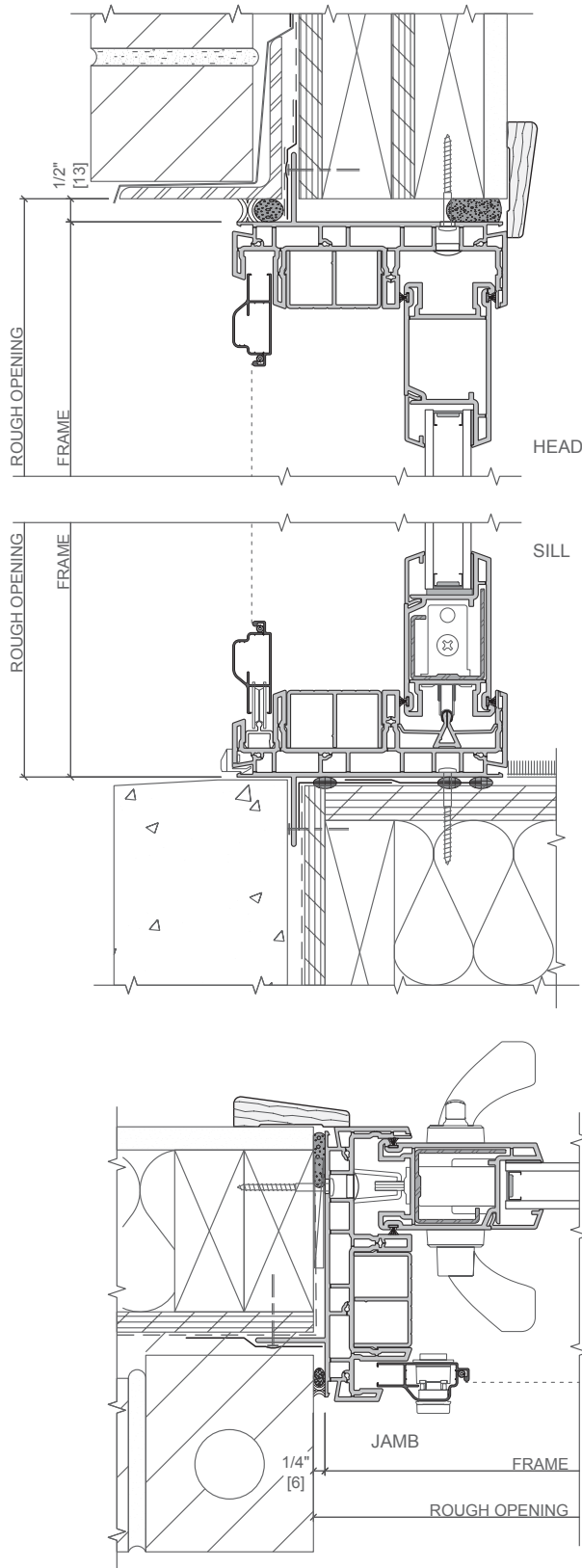
See page 3 for typical sealant details.

Refer to the appropriate Vinyl Window and Door Manufactured by Pella Installation Instruction for step-by-step instructions.



350 Series Installation Details

Sliding Patio Door with Integral Fin Wood Frame Construction with Brick Veneer



WATER-RESISTANT BARRIER BY OTHERS

Continuous water-resistive barrier applied to the wall sheathing.

THROUGH-WALL CAVITY FLASHING WITH WEEPS AT HEAD AND SILL BY OTHERS

Attach unit to wall construction with nails or screws at every other pre-punched hole in the installation fin and with frame screws.

PELLA SMARTFLASH™ FOIL BACKED BUTYL WINDOW AND DOOR FLASHING TAPE

Integrate the window and door flashing tape into the wall system.

Brick return at jamb to close cavity and provide backing for backer rod and sealant.

PELLA WINDOW AND DOOR INSTALLATION SEALANT AND WATER RESISTANT BACKER ROD.

Apply continuous sealant according to label directions and ASTM C1193.

LOW EXPANSION, LOW PRESSURE POLYURETHANE INSULATING WINDOW AND DOOR FOAM SEALANT - (DO NOT USE HIGH PRESSURE OR LATEX FOAMS)

Apply a continuous 1" bead of insulating foam to provide a full interior seal.

PELLA 2-1/2" RANCH-1 TRIM (#30AY) (OPTIONAL)

Scale 3" = 1' 0"

Items in bold are available from Pella.

These details are for typical single punch openings.

See page 3 for typical sealant details.

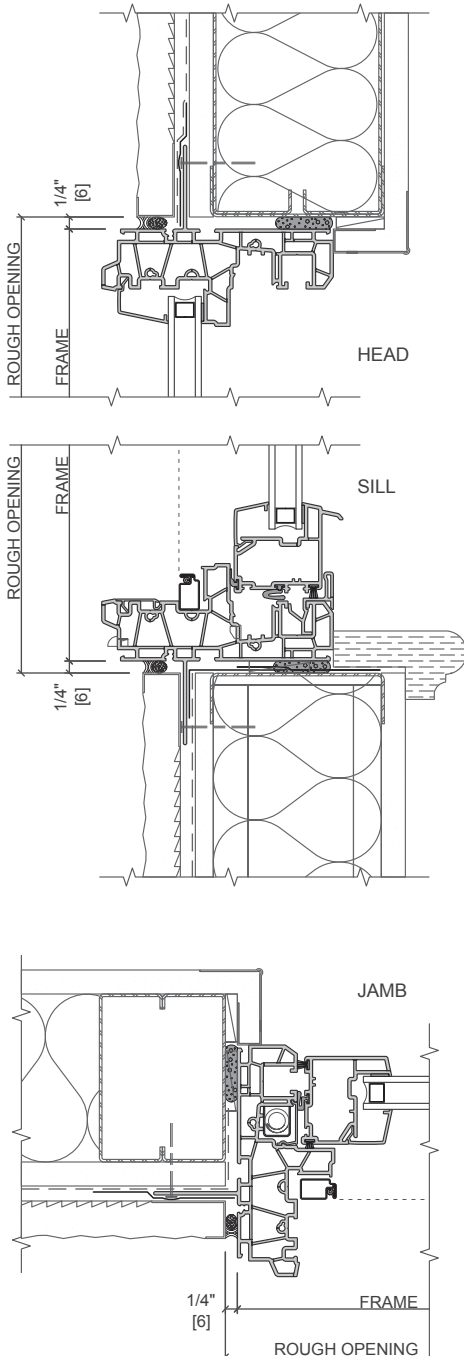
Refer to the appropriate Pella® 350 Series Installation Instruction for step-by-step instructions.



350 Series Installation Details

Single-Hung with Integral Fin Steel Stud Construction with Stucco

IMPORTANT NOTE: These details reflect general installation concepts for typical construction with water-managed stucco products. Due to the number of different systems available, no attempt has been made to show specific flashing or drainage details. Consult the stucco manufacturer for specific detailing required for their water-managed system.



WATER-RESISTANT BARRIER BY OTHERS

Continuous water-resistive barrier attached to the wall sheathing.

Attach unit to wall construction with nails or screws at every other pre-punched hole in the installation fin.

PELLA SMARTFLASH™ FOIL BACKED BUTYL WINDOW AND DOOR FLASHING TAPE

Integrate the window and door flashing tape into the wall system.

STUCCO J-MOLD BY OTHERS

PELLA WINDOW AND DOOR INSTALLATION SEALANT AND WATER RESISTANT BACKER ROD.

Apply continuous sealant according to label directions and ASTM C1193.

LOW EXPANSION, LOW PRESSURE POLYURETHANE INSULATING WINDOW AND DOOR FOAM SEALANT - (DO NOT USE HIGH PRESSURE OR LATEX FOAMS)

Apply a continuous 1" bead of insulating foam to provide a full interior seal.

INTERIOR SILL BY OTHERS

Scale 3" = 1' 0"

Items in bold are available from Pella.

These details are for typical single punch openings.

See page 3 for typical sealant details.

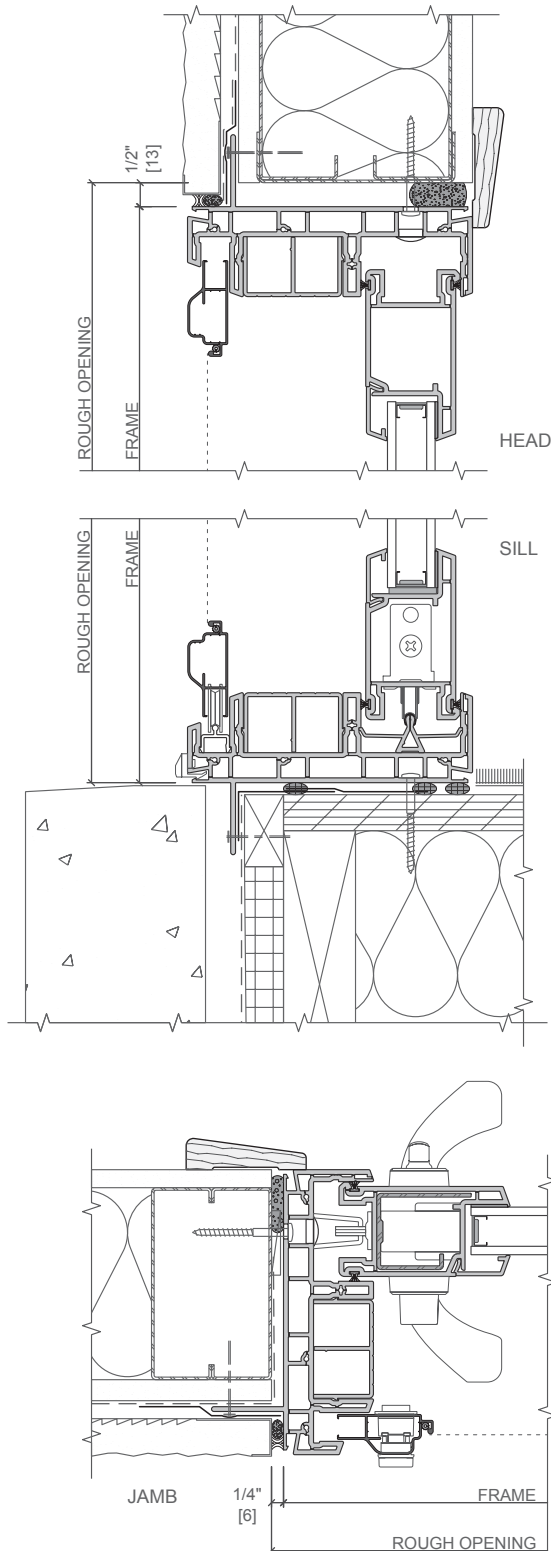
Refer to the appropriate Vinyl Window and Door Manufactured by Pella Installation Instruction for step-by-step instructions.



350 Series Installation Details

Sliding Patio Door with Integral Fin Steel Stud Construction with Stucco

IMPORTANT NOTE: These details reflect general installation concepts for typical construction with water-managed Stucco products. Due to the number of different systems available, no attempt has been made to show specific flashing or drainage details. Consult the Stucco manufacturer for specific detailing required for their water-managed system.



WATER-RESISTANT BARRIER BY OTHERS

Continuous water-resistive barrier applied to the wall sheathing.

Attach unit to wall construction with nails or screws at every other pre-punched hole in the installation fin and with frame screws.

PELLA SMARTFLASH™ FOIL BACKED BUTYL WINDOW AND DOOR FLASHING TAPE

Integrate the window and door flashing tape into the wall system.

STUCCO J-MOLD BY OTHERS

PELLA WINDOW AND DOOR INSTALLATION SEALANT AND WATER RESISTANT BACKER ROD.

Apply continuous sealant according to label directions and ASTM C1193.

LOW EXPANSION, LOW PRESSURE POLYURETHANE INSULATING WINDOW AND DOOR FOAM SEALANT - (DO NOT USE HIGH PRESSURE OR LATEX FOAMS)

Apply a continuous 1" bead of insulating foam to provide a full interior seal.

PELLA 2-1/2" RANCH-1 TRIM (#30AY) (OPTIONAL)

Scale 3" = 1' 0"

Items in bold are available from Pella.

These details are for typical single punch openings.

See page 3 for typical sealant details.

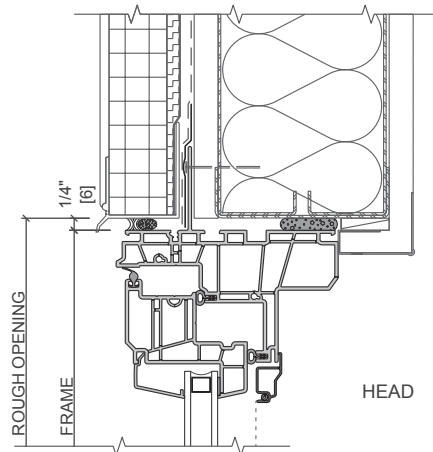
Refer to the appropriate Pella® 350 Series Installation Instruction for step-by-step instructions.



350 Series Installation Details

Casement with Integral Fin Steel Stud Construction with Water-Managed EIFS

IMPORTANT NOTE: These details reflect general installation concepts for typical construction with water-managed EIFS systems only. Consult EIFS manufacturer for specific detailing required for their water-managed system. Moisture problems, including unacceptable water infiltration, have been associated with barrier wall systems, such as EIFS (also known as synthetic stucco). Pella® products should not be used in barrier (non-water managed) EIFS systems unless Pella's current, recommended installation procedures for installation of windows and doors into EIFS are used. Any other use of Pella products with barrier EIFS systems will void the Limited Warranty. Contact your local Pella representative for consideration with non-water managed EIFS systems. See the Product Performance section for additional information on barrier EIFS and other non-water managed wall systems.



WATER-RESISTANT BARRIER BY OTHERS

Continuous water-resistive barrier attached to the wall sheathing.

FLASHING BY OTHERS

Metal head drip or sill flashing.

Attach unit to wall construction with nails or screws at every other pre-punched hole in the installation fin.

PELLA SMARTFLASH™ FOIL BACKED BUTYL WINDOW AND DOOR FLASHING TAPE

Integrate the window and door flashing tape into the wall system.

EIFS J-MOLD BY OTHERS

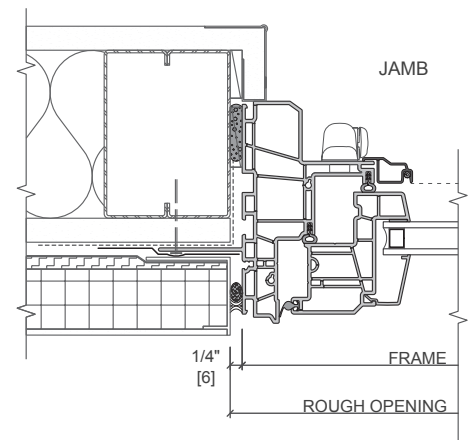
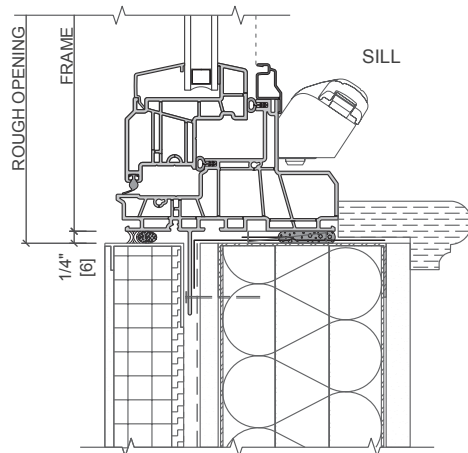
PELLA WINDOW AND DOOR INSTALLATION SEALANT AND WATER RESISTANT BACKER ROD.

Apply continuous sealant according to label directions and ASTM C1193.

LOW EXPANSION, LOW PRESSURE POLYURETHANE INSULATING WINDOW AND DOOR FOAM SEALANT - (DO NOT USE HIGH PRESSURE OR LATEX FOAMS)

Apply a continuous 1" bead of insulating foam to provide a full interior seal.

INTERIOR SILL TRIM BY OTHERS



Scale 3" = 1' 0"

Items in bold are available from Pella.

These details are for typical single punch openings.

See page 3 for typical sealant details.

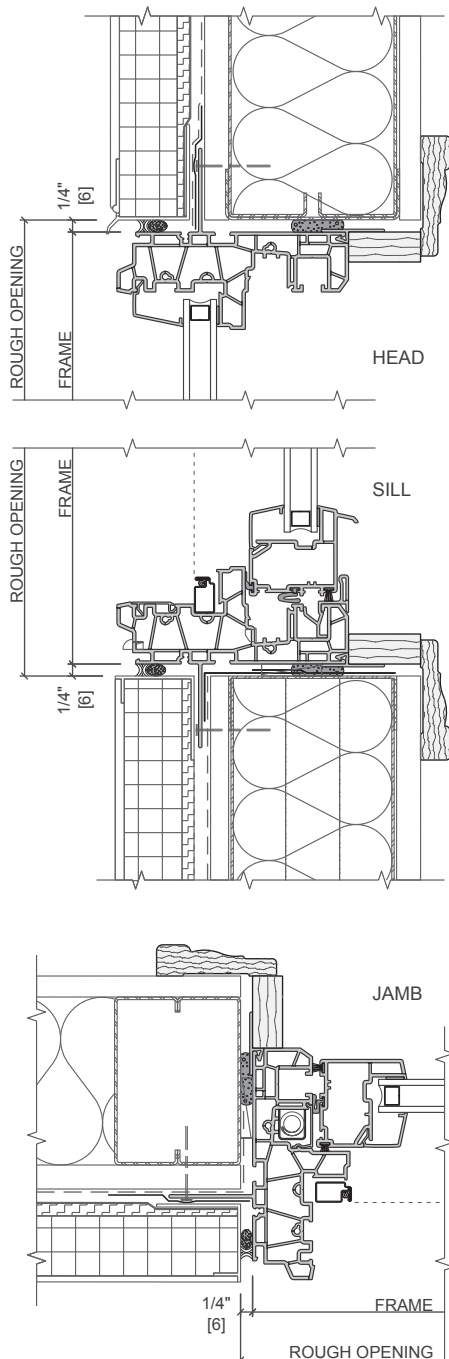
Refer to the appropriate Vinyl Window and Door Manufactured by Pella Installation Instruction for step-by-step instructions.



350 Series Installation Details

Single-Hung with Integral Fin Wood Frame Construction with Water-Managed EIFS

IMPORTANT NOTE: These details reflect general installation concepts for typical construction with water-managed EIFS systems only. Consult EIFS manufacturer for specific detailing required for their water-managed system. Moisture problems, including unacceptable water infiltration, have been associated with barrier wall systems, such as EIFS (also known as synthetic stucco). Pella® products should not be used in barrier (non-water managed) EIFS systems unless Pella's current, recommended installation procedures for installation of windows and doors into EIFS are used. Any other use of Pella products with barrier EIFS systems will void the Limited Warranty. Contact your local Pella representative for consideration with non-water managed EIFS systems. See the Product Performance section for additional information on barrier EIFS and other non-water managed wall systems.



WATER-RESISTANT BARRIER BY OTHERS

Continuous water-resistive barrier attached to the wall sheathing.

FLASHING BY OTHERS

Metal head drip or sill flashing.

Attach unit to wall construction with nails or screws at every other pre-punched hole in the installation fin.

PELLA SMARTFLASH™ FOIL BACKED BUTYL WINDOW AND DOOR FLASHING TAPE

Integrate the window and door flashing tape into the wall system.

EIFS J-MOLD BY OTHERS

PELLA WINDOW AND DOOR INSTALLATION SEALANT AND WATER RESISTANT BACKER ROD.

Apply continuous sealant according to label directions and ASTM C1193.

LOW EXPANSION, LOW PRESSURE POLYURETHANE INSULATING WINDOW AND DOOR FOAM SEALANT - (DO NOT USE HIGH PRESSURE OR LATEX FOAMS)

Apply a continuous 1" bead of insulating foam to provide a full interior seal.

FACTORY APPLIED JAMB EXTENSION (OPTIONAL)

PELLA 2-1/2" COLONIAL-1 TRIM (#30AX) (OPTIONAL)

Scale 3" = 1' 0"

Items in bold are available from Pella.

These details are for typical single punch openings.

See page 3 for typical sealant details.

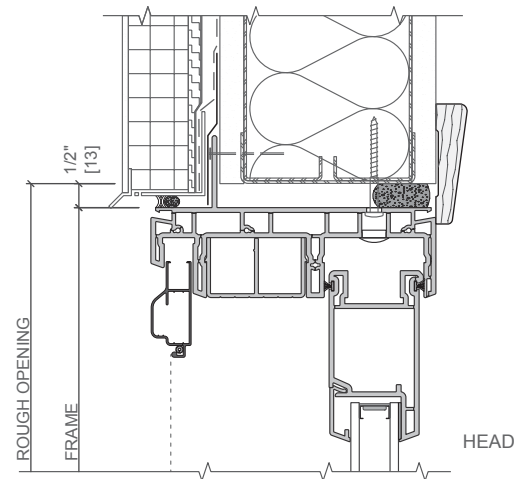
Refer to the appropriate Vinyl Window and Door Manufactured by Pella Installation Instruction for step-by-step instructions.



350 Series Installation Details

Sliding Patio Door with Integral Fin Steel Stud Construction with Water-Managed EIFS

IMPORTANT NOTE: These details reflect general installation concepts for typical construction with water-managed EIFS systems only. Consult EIFS manufacturer for specific detailing required for their water-managed system. Moisture problems, including unacceptable water infiltration, have been associated with barrier wall systems, such as EIFS (also known as synthetic stucco). Pella® products should not be used in barrier (non-water managed) EIFS systems unless Pella's current, recommended installation procedures for installation of windows and doors into EIFS are used. Any other use of Pella products with barrier EIFS systems will void the Limited Warranty. Contact your local Pella representative for consideration with non-water managed EIFS systems. See the Performance section for additional information on barrier EIFS and other non-water managed wall systems.



WATER-RESISTANT BARRIER BY OTHERS

Continuous water-resistive barrier applied to the wall sheathing.

FLASHING BY OTHERS

Metal head drip or sill flashing.

Attach unit to wall construction with nails or screws at every other pre-punched hole in the installation fin and with frame screws.

PELLA SMARTFLASH™ FOIL BACKED BUTYL WINDOW AND DOOR FLASHING TAPE

Integrate the window and door flashing tape into the wall system.

EIFS J-MOLD BY OTHERS

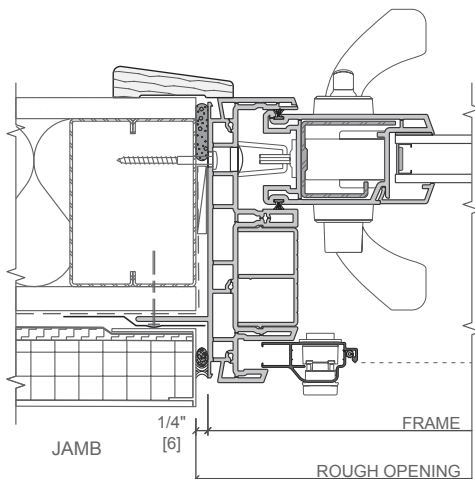
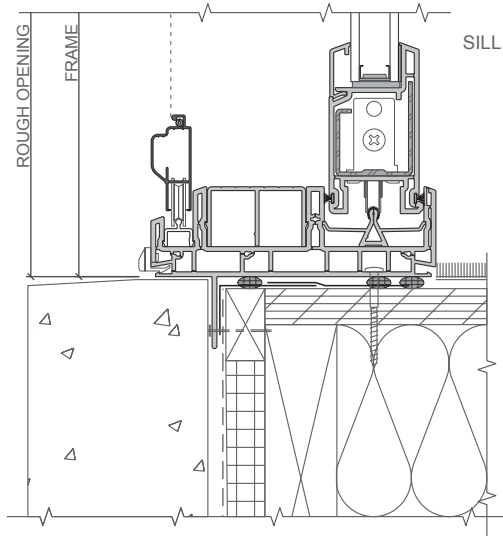
PELLA WINDOW AND DOOR INSTALLATION SEALANT AND WATER RESISTANT BACKER ROD.

Apply continuous sealant according to label directions and ASTM C1193.

LOW EXPANSION, LOW PRESSURE POLYURETHANE INSULATING WINDOW AND DOOR FOAM SEALANT - (DO NOT USE HIGH PRESSURE OR LATEX FOAMS)

Apply a continuous 1" bead of insulating foam to provide a full interior seal.

PELLA 2-1/2" RANCH-1 TRIM (#30AY) (OPTIONAL)



Scale 3" = 1' 0"

Items in bold are available from Pella.

These details are for typical single punch openings.

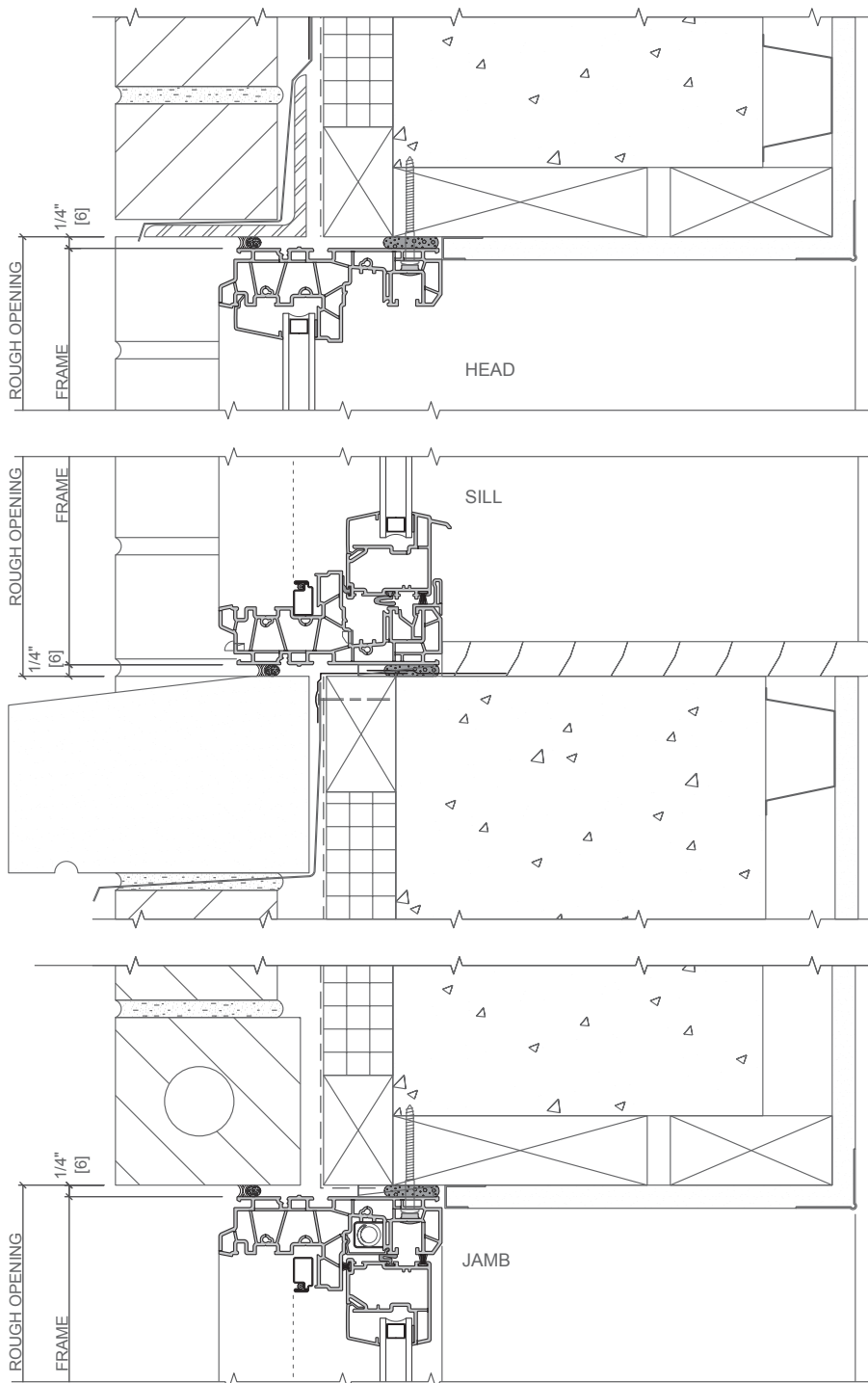
See page 3 for typical sealant details.

Refer to the appropriate Pella® 350 Series Installation Instruction for step-by-step instructions.



350 Series Installation Details

Single-Hung Block Frame Block Frame Construction



WATER-RESISTANT BARRIER BY OTHERS
Continuous water-resistive barrier attached to the wall sheathing.

Attach unit to wall construction with screws at every pre-punched hole in the frame.

PELLA SMARTFLASH™ FOIL BACKED WINDOW AND DOOR FLASHING TAPE

Integrate the window and door flashing tape into the wall system.

LOW EXPANSION, LOW PRESSURE POLYURETHANE INSULATING WINDOW AND DOOR FOAM SEALANT - (DO NOT USE HIGH PRESSURE OR LATEX FOAMS)

Apply a continuous 1" bead of insulating foam to provide a full interior seal.

INTERIOR SILL TRIM BY OTHERS

Scale 3" = 1' 0"

Items in bold are available from Pella.

These details are for typical single punch openings.

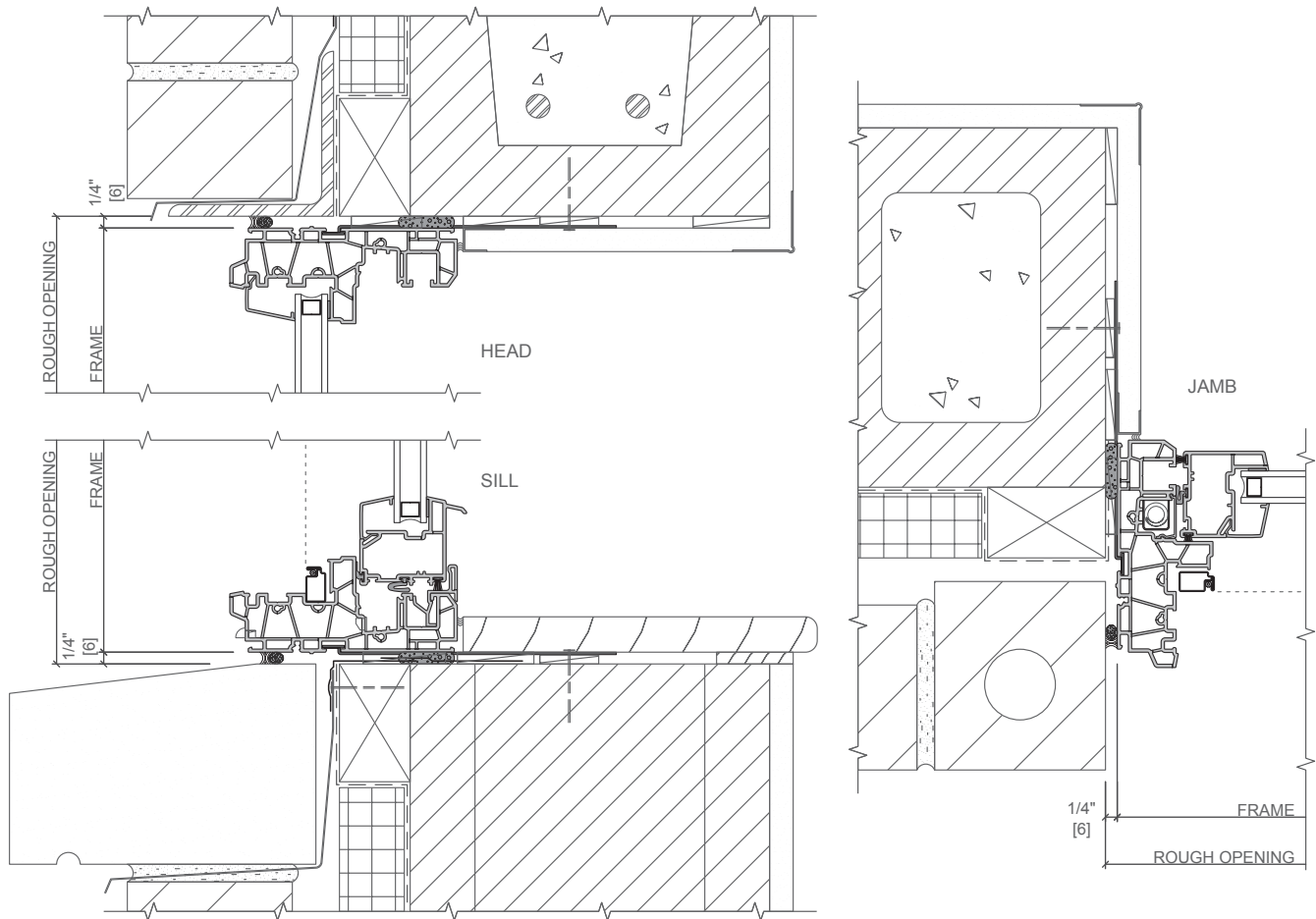
See page 3 for typical sealant details.

Refer to the appropriate Vinyl Window and Door Manufactured by Pella Installation Instruction for step-by-step instructions.



350 Series Installation Details

Single-Hung Block Frame Block Frame Construction with Installation Clips



WATER-RESISTANT BARRIER BY OTHERS.

Continuous water-resistive barrier attached to the wall sheathing.

THROUGH-WALL CAVITY FLASHING WITH WEEPS AT HEAD AND SILL BY OTHERS.

SMARTFLASH® INSTALLATION TAPE

Integrate the window and door flashing tape into the wall system.

SHIM AND PLUMB UNITS AS REQUIRED BY OTHERS.

INSTALLATION CLIPS #710L

Place into fin groove and anchor to wall construction. Ensure that the interior bead of insulating foam continues around clips.

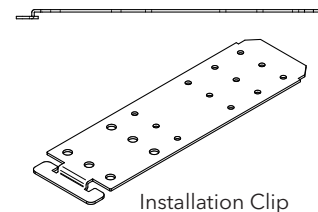
BACKER ROD AND SEALANT BY OTHERS.

Water-resistant backer rod & sealant. See typical detail.

LOW EXPANSION, LOW PRESSURE POLYURETHANE INSULATING WINDOW AND DOOR FOAM SEALANT - (DO NOT USE HIGH PRESSURE OR LATEX FOAMS)

Apply a continuous 1" bead of insulating foam to provide a full interior seal.

Add blocking at jamb to close cavity and provide backing for backer rod and sealant. Seal wall cavity around head and jamb of window's rough opening.



Installation Clip

Scale 3" = 1' 0"

Items in bold are available from Pella.

These details are for typical single punch openings.

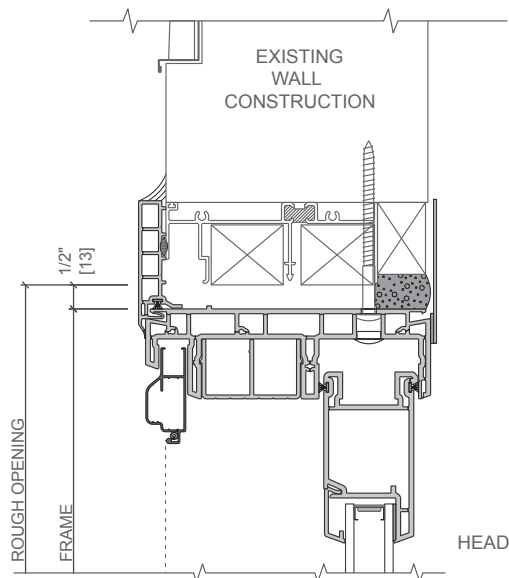
See page 3 for typical sealant details.

Refer to the appropriate Vinyl Window and Door Manufactured by Pella Installation Instruction for step-by-step instructions.



350 Series Installation Details

Sliding Patio Door Flush Flange Frame Replacement Installation



Existing aluminum door frame head and jambs remain in the opening - existing door sill must be removed.

FLASHING BY OTHERS

Metal head flashing.

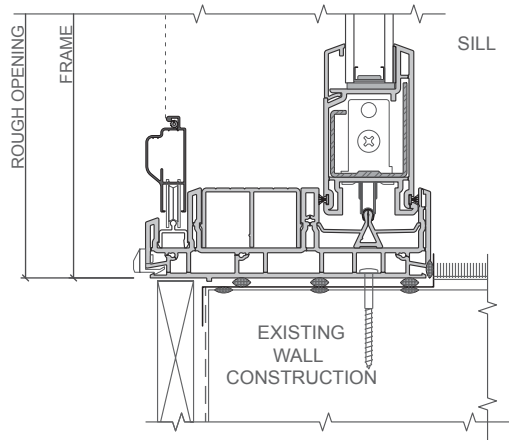
Metal sill flashing.

Attach unit to wall construction with frame screws per the installation instruction.

SILL PAN BY OTHERS

PELLA WINDOW AND DOOR INSTALLATION SEALANT.

Apply continuous sealant according to label directions and ASTM C1193.

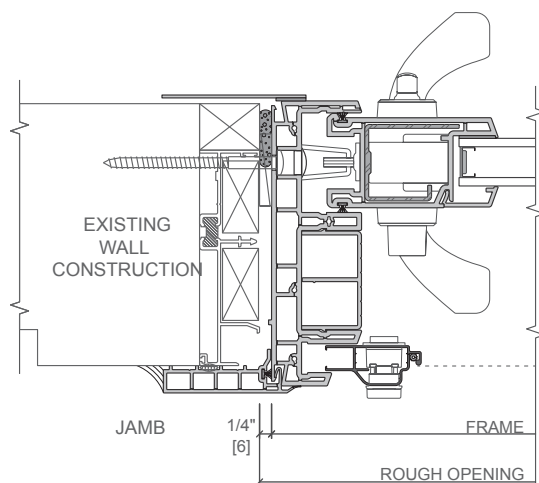


LOW EXPANSION, LOW PRESSURE POLYURETHANE INSULATING WINDOW AND DOOR FOAM SEALANT - (DO NOT USE HIGH PRESSURE OR LATEX FOAMS)

Apply a continuous 1" bead of insulating foam to provide a full interior seal.

WOOD BLOCKING BY OTHERS AT SILL TO SUPPORT FRAME

VINYL INTERIOR TRIM BY OTHERS



Scale 3" = 1' 0"

Items in bold are available from Pella.

These details are for typical single punch openings.

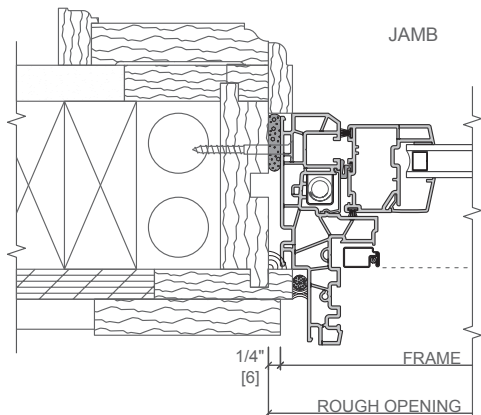
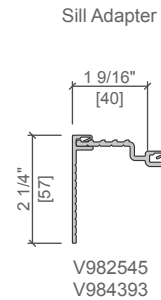
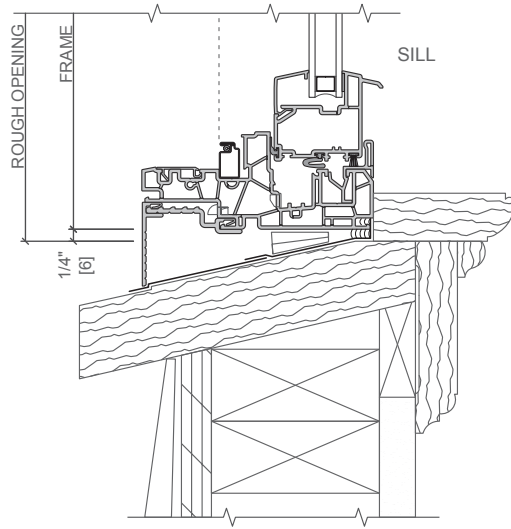
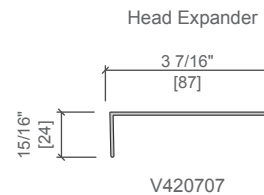
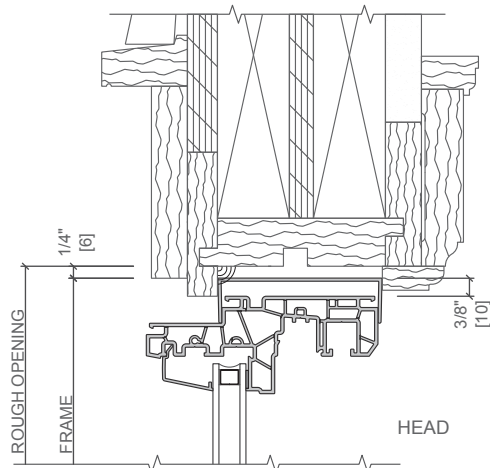
See page 3 for typical sealant details.

Refer to the appropriate Pella® 350 Series Installation Instruction for step-by-step instructions.



350 Series Installation Details

Single-Hung Window Pocket Replacement Frame Renovation Install Details



WALL CONSTRUCTION AND OLD DOUBLE-HUNG FRAME SHOWN ARE EXISTING; OLD DOUBLE-HUNG SASH AND PARTING STOP HAVE BEEN REMOVED.

REFER TO THE APPROPRIATE PELLA INSTALLATION INSTRUCTION FOR COMPLETE STEP BY STEP INSTRUCTION.

SHIM AND PLUMB UNITS AS REQUIRED.

SEAL UNIT TO INTERIOR STOP AND SILL.

INSTALL REPLACEMENT SILL ADAPTOR . TRIM AS NEEDED.

DO NOT SEAL TO SILL.

WOOD BLOCKING, TRIM, SEALANT BY OTHERS