



3Q 2021

BC/CO Tactical Training

Class objectives

This Class is designed to practice setting up Groups and Divisions and working on the Radio Communications that go along with that. Each scenario starts with the Battalion having already assumed Command, and several units assigned. Fill in your tactical worksheet, and then simulate your radio communications with company officer role players.

Possible Radio Traffic: You are *assigned/now* a Group or Division *Supervisor*, Units are *working for/under* a Group or Division

“L161 **185 Command**”

“L161”

“You are *assigned/now* Vent Group *Supervisor*, you will have R151.

Your objectives are Vertical Ventilation”

“L161 Copy Vent Group with R151.”

“R151 **185 Command**”

“R151”

“You are *working for/under* Vent Group”

“R151 copy *working for/under* Vent Group”

Establishing Divisions/Groups

King Co. Model Procedures 17

12.0 UTILIZATION OF DIVISION AND GROUPS

12.1 When establishing Divisions/Groups, the IC will assign/advise each management component:

12.1.1 Tactical objectives.

12.1.2 Geographical or functional area of responsibility.

12.1.3 A radio designation (Division/Group).

12.1.4 Radio talk group as needed.

12.1.5 The identity of resources assigned to that Division/Group.

12.1.6 Command assigns Divisions and/or Groups as required for effective emergency operations; this assignment relates to both geographic and functional tactical assignments.

12.1.7 The incident scene shall be subdivided in a manner that makes sense. This should be accomplished by assigning Divisions to geographic locations (e.g. Roof Division, Division Alpha) and/or assigning functional responsibilities to Groups (e.g., Evacuation Group, Salvage Group, Medical Group).

12.1.8 Designation of the Division that is working within the structure may be based on the point of entry (Division Alpha) or specific operating area (Division 1, Division 2, etc.). For structure fires in simple structures, the point of entry will be the general default, understanding that the Incident Commander may make division assignments based on the needs of the incident.

12.1.9 Levels below ground should use the term: Division 01 or Basement 1, Basement 2, to identify the different floors.

12.1.10 Multiple floor buildings should default to the design of the building (Lobby vs. Floor 1).

12.1.11 Division/Group Supervisors shall account for, supervise, and/or coordinate crews assigned to them.

12.1.12 Division/Group Supervisors may utilize Accountability Boards and Command vests as appropriate.

Duties of Division/Group Supervisor

King Co. Model Procedures 17

- 12.2 In general, the Division/Group Supervisor must do the following:
 - 12.2.1 Complete tactical objectives by making appropriate assignments.
 - 12.2.2 Account for all resources and assigned personnel.
 - 12.2.3 Ensure that operations are conducted safely.
 - 12.2.4 Monitor work progress and redirect activities as necessary.
 - 12.2.5 Coordinate actions and related activities with adjacent Divisions/Groups.
 - 12.2.6 Monitor welfare of assigned personnel and rotate companies through rehab as needed.
 - 12.2.7 Request additional resources as needed.
 - 12.2.8 Provide immediate supervisor with essential and timely progress reports.
 - 12.2.9 Reallocate or release resources within the Division/Group.

Mayday, Mayday, Mayday

- When a single unit or resource is assigned as the RIC, their Unit Identifier will be used (e.g. Engine 133, Engine 165 etc.)
- Incident Commander should maintain a reserve of resources so that if a RIC must be initiated, they have enough resources to support the rescue effort while continuing to sustain the original incident operations. (2in/2out)
- When RIG is established, E165 would be the interior contact working for RIG.
- If an additional Company is assigned interior to assist with the rescue, a team leader should be identified.
- You are assigned RIG Supervisor with the following companies.
- You are working for/under RIG.

NKCTC TACTICAL GUIDELINES FOR OFFENSIVE FIRE ATTACK & COMPANY OPERATIONS

Communications

Communications “**ORDER Model**”

A communications model shall be used to ensure the receipt and acknowledgment of critical communications. The NATO phonetic alphabet will be utilized to identify sides of buildings (i.e. Alpha, Bravo, Charlie, Delta). An example of a Company being assigned would be:

“E151, 148 Command”

“E151”

“Exposure line Side - Charlie”

“E151, exposure line Side – Charlie”

Every effort should be made to eliminate needless phrases and terminology from transmissions. The elimination of terms such as “upon your arrival”, “please” and “could you” will keep transmissions short and to the point.

In addition, avoid “good news reporting” This is giving information to the IC that is not priority or pertinent. The following is an example of good news reporting:

“Command from E151”

“Command”

“E151 is continuing on a right wall search and will advise when complete”

It should also be assumed that Company Officers will determine how a task should be completed once assigned. Specific direction of a task should be avoided, unless its completion in a specific manner is critical to the incident.

NKCTC TACTICAL GUIDELINES FOR OFFENSIVE FIRE ATTACK & COMPANY OPERATIONS

Tasks, Location, Objective or TLO – A method to effectively describe a tactical objective while being clear and simple in directions. Example: “E142 hoseline to alpha, floor one, fire attack.



MVA Rescue

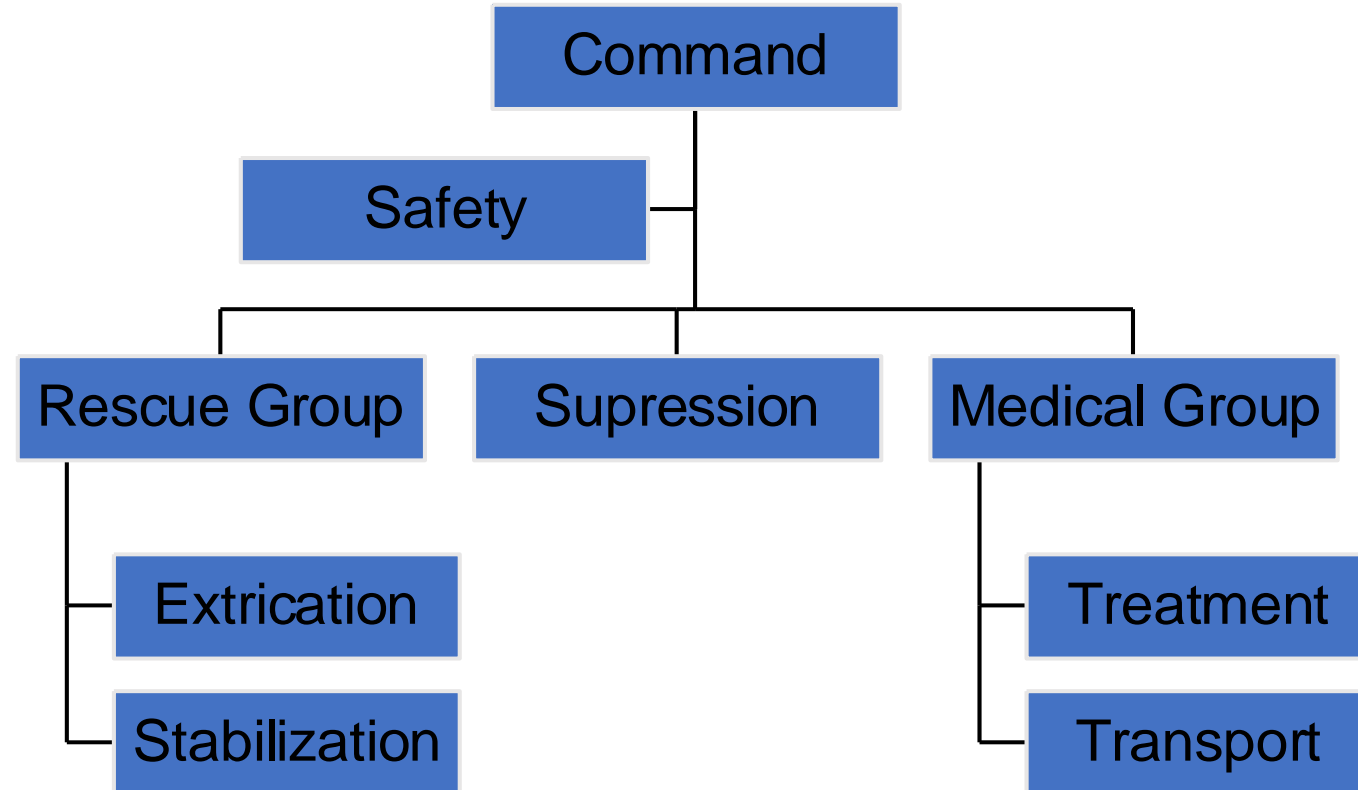
Response Plan: MVA Rescue

Ladder, Engine, BC, MSO, Medic, Aid, Tech Rescue

MVA Medic

Response Plan: MVA ALS

Ladder, Engine, BC, MSO, Medic, Aid



1

17200 Woodinville Duvall Rd

MVA Rescue: E135, E133, L131, A131, L142, B131, E118, MSO117, M135

Short report: 4 car MVA, 2 red trapped car on its top. 2 red trapped car on fog line. 2 red in red mini van. One yellow in white car. B131 you have arrived on scene and assumed **WD Command** from E135 Officer. The call has been upgraded to a MVA Medic Rescue Response:

The following units are on scene and assigned:

E135 Triage/Pt care

E133 Stabilization

L131 Extrication

A131 Pt care

L142 Arrives

E118 Arrives

MSO117 Arrives

M135 Arrives



2

17500 Interstate 5

MVA Rescue: E164, A164, E165, L161, E157, B161, R151, MSO161, M161

Short report: MVA Greyhound bus into Semi. Triage: 25 patients. 1 striped, 6 red, 8 yellow, 10 green. Driver trapped. B161 you have arrived on scene and assumed **I-5 Command** from E164 Officer. The call has been upgraded to a MVA Rescue Response:

The following units are on scene and assigned:

- E164 Triage/Pt care
- A164 Triage/Pt care
- E165 Stabilization
- L161 Arrives
- E157 Arrives
- R151 Arrives
- MSO161 Arrives
- M161 Arrives

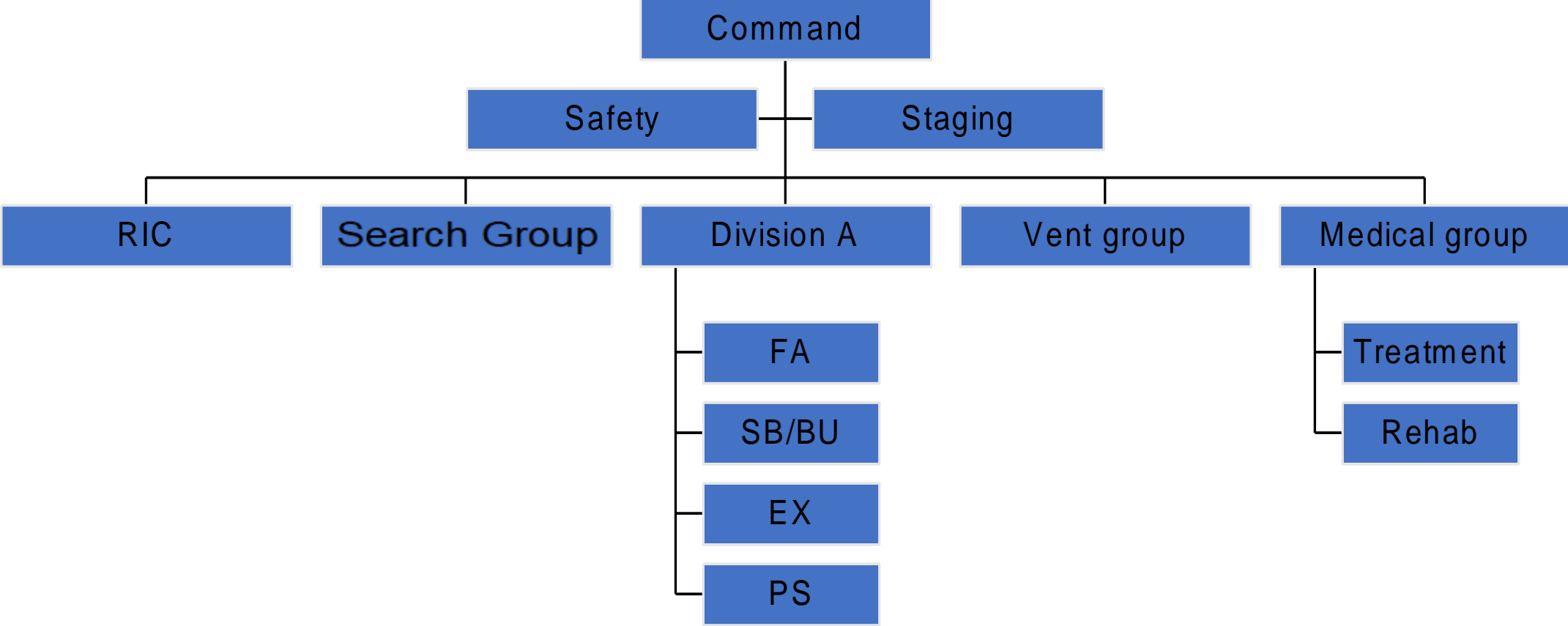


2 Alarm Multi-Family

Response Plan: Comm/MF

1st Alarm: 2 Ladder, 4 Engines, Aid, Medic, 2 BC, MSO,

2nd Alarm: 2 Ladders, 4 Engines, Aid, Medic, BC



10710 E Riverside Dr

3

Multi Family Structure Fire: E142, E145, E144, A142, L131, E151, L127, B142, B131, A131, M142, MSO117

Short Report: Multi Family Structure Fire, started in upstairs apartment, (apartment fire knocked down) spread to attic. Large Common Attic, E144 requests vertical ventilation. E145 requests 2 additional units to help evacuation floor 1 and 2.

B142 you have arrived on scene and assumed **Riverside Command** from E142. The call has been upgraded to a Second Alarm.

The following units are on scene and assigned:

E142 SB

E145 FA

E144 Ex F2

L131 VV

L127 Arrives

A131 Arrives

E151, B131, M142, MSO117 all Arrive

2nd Alarm Arrives: E125, E133, E117, E126

L116, R151, A127, M135, B127



2404 NE 150 St.

4 Multi Family Structure Fire: E164, E165, E157, L161, E151, L142, B161, B151, A165, M163, MSO161

Short Report: Multi Family Structure Fire, started in upstairs apartment, spread to attic and adjacent Building. Large Common Attic, L161 requests additional truck to assist with trench cut.

B161 you have arrived on scene and assumed **150 Command** from E164. The call has been upgraded to a Second Alarm.

The following units are on scene and assigned:

E164 SB

E165 FA

E157 Ex F2

L161 VV

L142 Arrives

A165 Arrives

E151, B151, M163, MSO106 all Arrive

2nd Alarm Arrives: E144, E133, E125, E126, L127, L131, A131, B131



14309 NE Woodinville Duvall Rd

5 Multi Family Structure Fire: L131, E135, E133, E118, L142, E126, B131, B142, A117, M135, MSO117

Short Report: Multi Family Structure Fire, started in upstairs apartment. Large Common Attic, L131 requests additional truck to assist with Ventilation. E135 reports 3 red patients out of building, with smoke inhalation.

B131 you have arrived on scene and assumed **WD Command** from L131. The call has been upgraded to a Second Alarm.

The following units are on scene and assigned:

E135 SB

E133 FA

E118 Ex F2

L131 VV

L142 Arrives

A117 Arrives

E126, B142, M135, MSO117 all Arrive

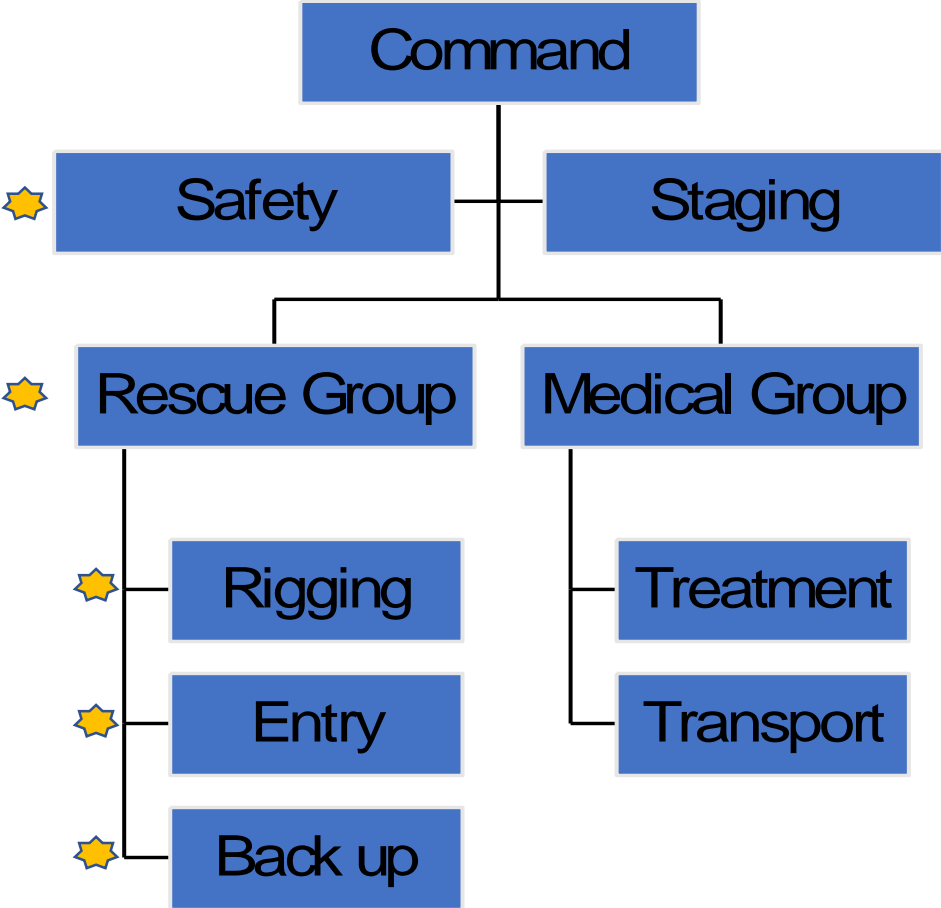
2nd Alarm Arrives: E125, E116, E145, E124, L127, L116, A127, B127, M127



Rope Rescue

Response Plan: Tech Rescue

2 Ladder, 2 Engine, BC, MSO, Medic, 3 Tech Rescue



6

1608 217 Place SE

Rope Rescue: E145, E144, L142, A142 L131, R151, B142, MED142, MSO161

Short Report: Medical Emergency 55 Y/O Tower worker, Unconscious.

B142 you have arrived on scene and assumed **217 Command** from E145. The call has been upgraded to a Rope Rescue.

The following units are on scene and assigned:

E145 Scene isolation

E144 Establish anchor, cone off area for Ladder.

A142 Prepare EMS equipment for Patient contact.

L142 Arrives:

L131 Arrives:

R151 Arrives:

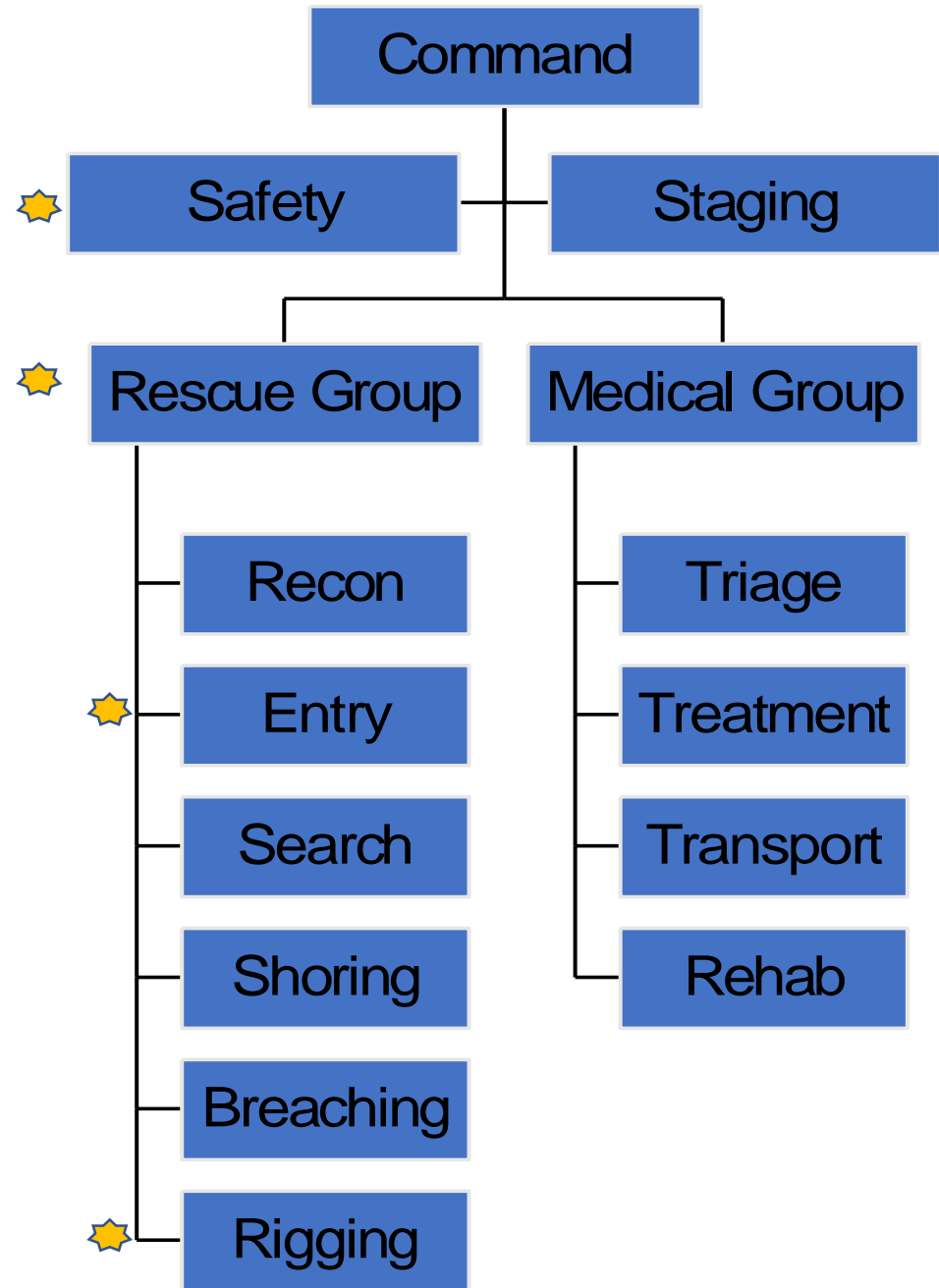
MED 142 Arrives:



Structural Collapse

Response Plan: Tech Rescue

2 Ladder, 2 Engine, BC, MSO, Medic, 3 Tech Rescue



★ TRT Technician

7

8312 NE 169 ST

Rescue Response: E151, R151, L142, L161, A157, B151, B161, MED163, MSO161

Short report: Tree into house, Mom and 3 kids trapped inside.

B151 you have arrived on scene and assumed **169 Command** from E151 Officer. The call has been upgraded to a rescue response:

The following units are on scene and assigned:

E151 Primary Search

R151 Stabilization

A157 Patient care

L161 Arrives

L142 Arrives

B161 Arrives

MSO161 Arrives

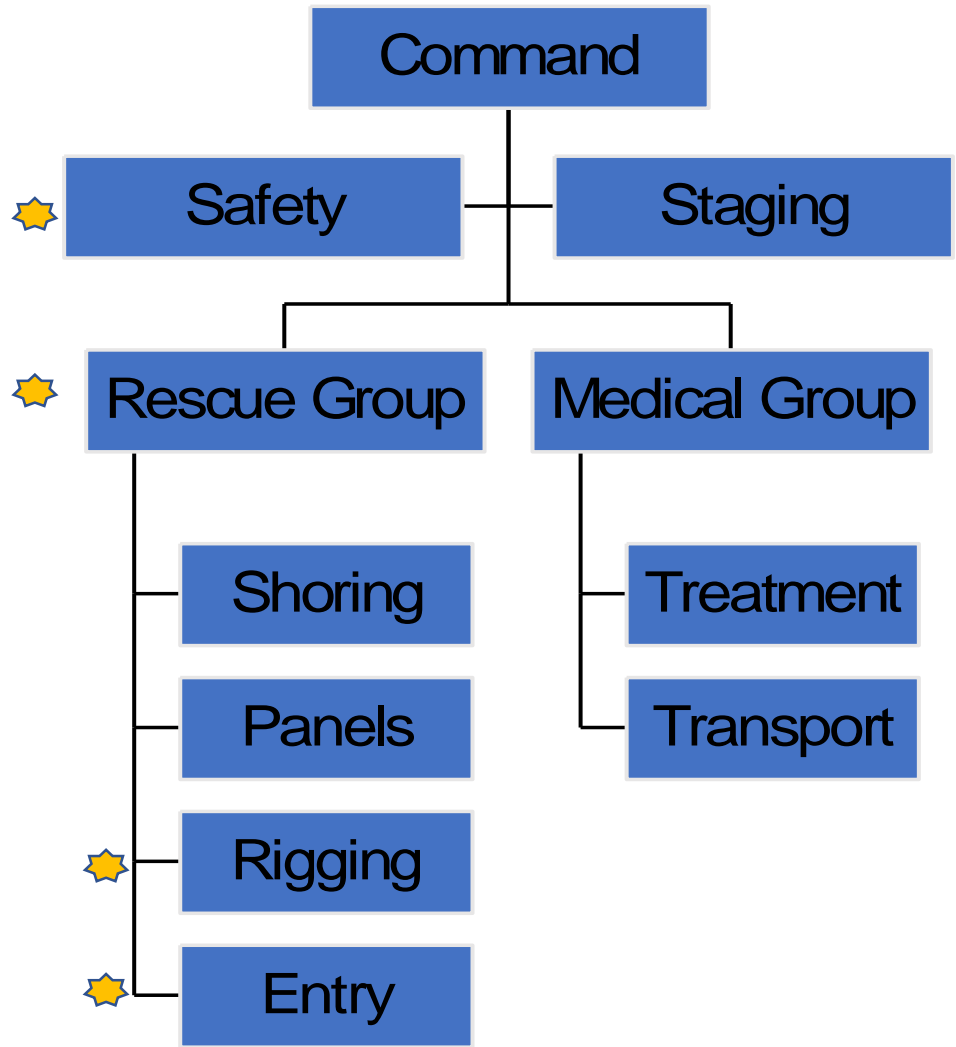
Med163 Arrives



Trench Rescue

Response Plan: Tech Rescue

2 Ladder, 2 Engine, BC, MSO, Medic, 3 Tech Rescue



★ TRT Technician

8

14212 Avondale Rd NE

Trench Rescue: E133, E135, E118, A117, L131, B131, L116, MSO117, Med 135

Short report: 12 Y/O trapped in trench, dirt up to waist.

B131 you have arrived on scene and assumed **Avondale Command** from E133 Officer.

The call has been upgraded to a trench rescue:

The following units are on scene and assigned:

A117 Patient care

E135 Ground Ladders Ropes

E133 Restrict Access

L131 Arrives

E118 Arrives

L116 Arrives

MSO117 Arrives

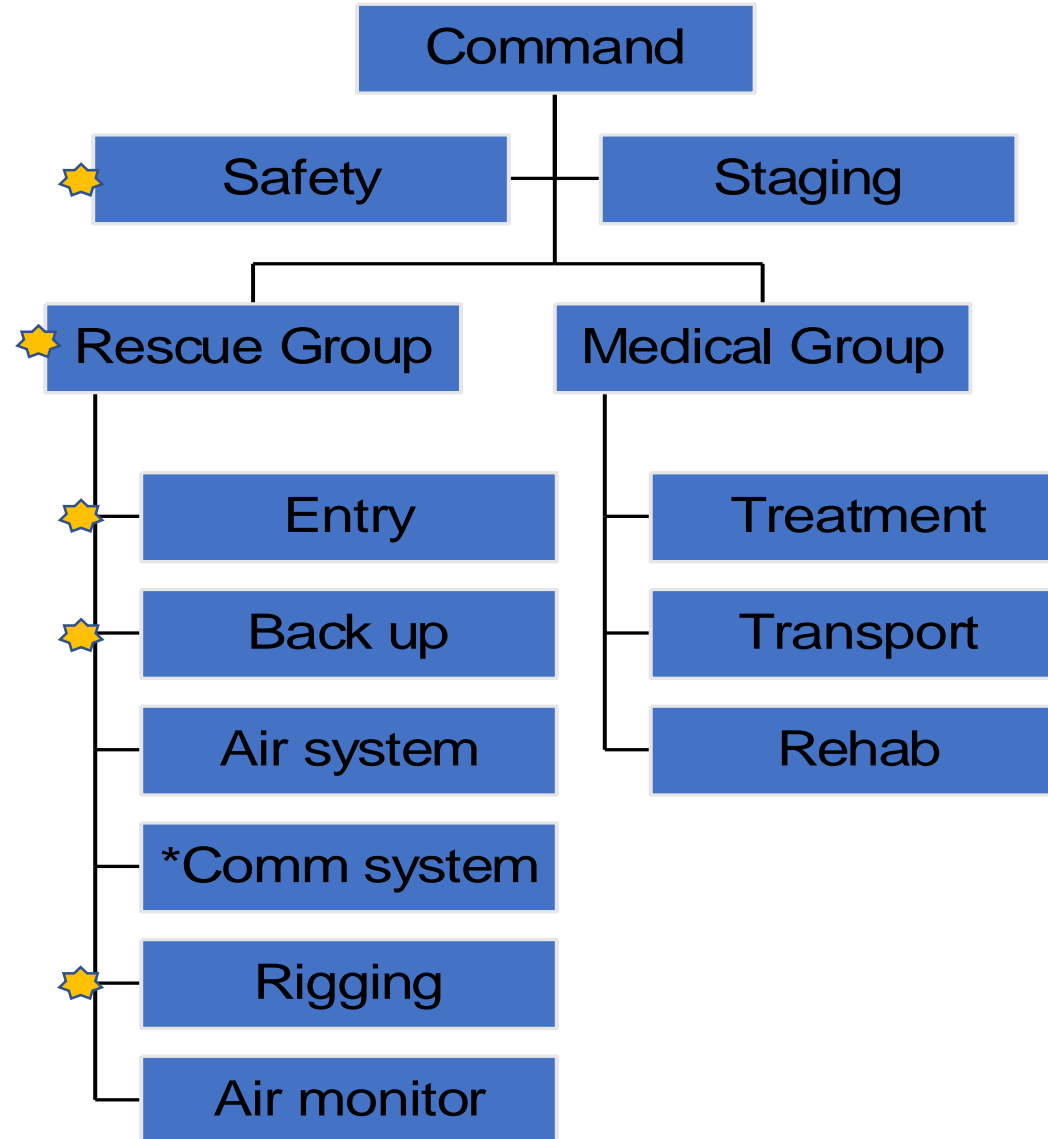
Med135 Arrives



Confined Space

Response Plan: Tech Rescue

2 Ladder, 2 Engine, BC, MSO, Medic, 3 Tech Rescue



 TRT Technician

9

Shoreline Recycling & Transfer Station 2300 N 165 St

Confined space Rescue: L161, R151, E164, E165, B161, MSO161, M163, L142, A165

Short report: 1 Sanitation worker unconscious, was cleaning bottom of man hole.

B161 you have arrived on scene and assumed **165 Command** from L161 Officer. The call has been upgraded to a Confined Space Rescue:

The following units are on scene and assigned:

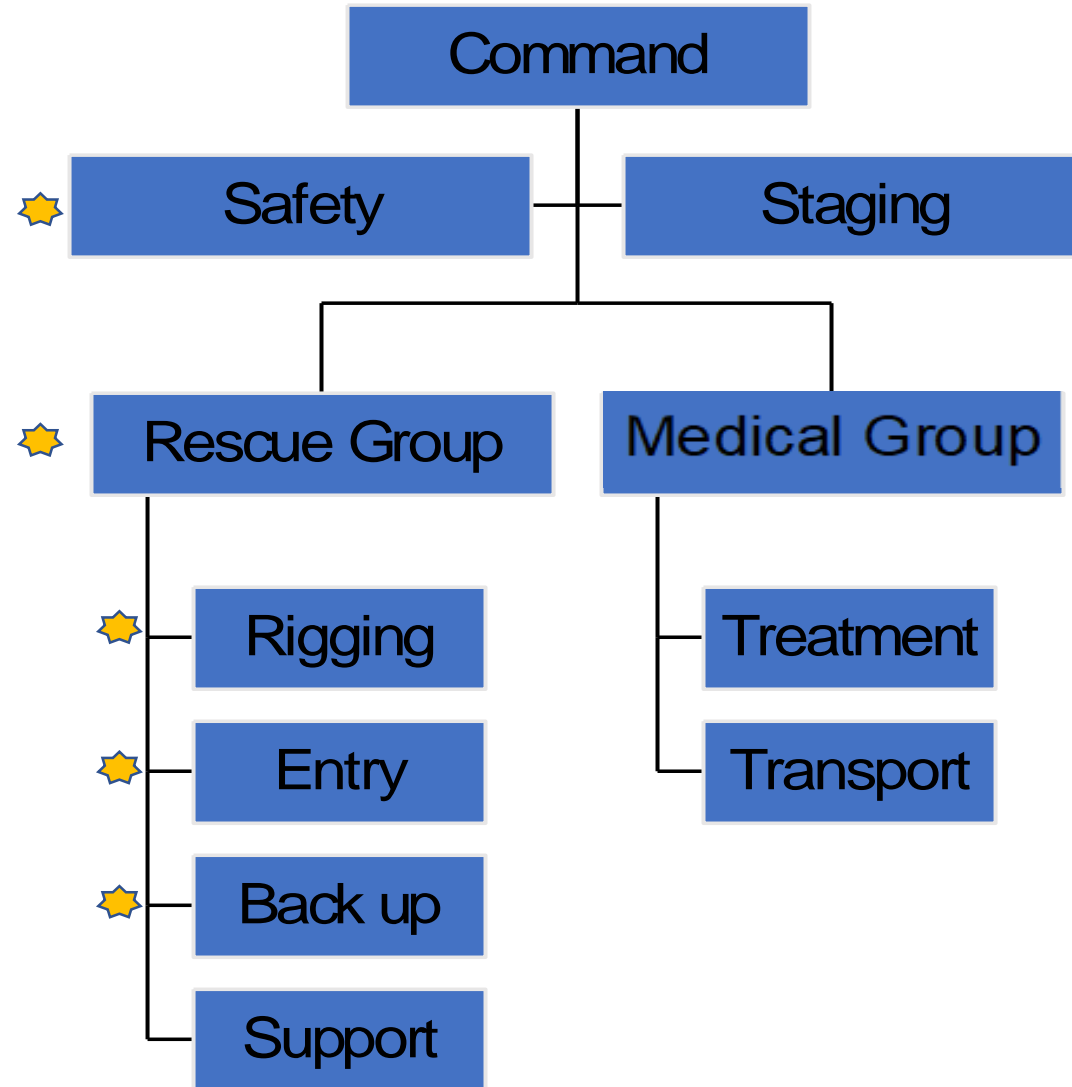
- L161 Rigging
- R151 Tool cache
- E165 Restrict Access
- E164 Arrives
- L142 Arrives
- MSO161 Arrives
- Med161 Arrives
- Aid 165 Arrives



Surface Water Rescue

Response Plan: Tech Rescue

2 Rescue Water, Ladder, BC, MSO, Medic, Aid



★ TRT Technician

10

7300 block, Sammamish Slew

Rescue Response: E151, R151, L142, L161, A157, B151, B161, MED163, MSO161

Short report: 10 y/o in slew, unable to swim.

B151 you have arrived on scene and assumed **Sammamish Command** from E151 Officer.

The call has been upgraded to a Surface Water Rescue:

The following units are on scene and assigned:

E151 Rigging

R151 Spotting

L161 Swimmers

E164 Arrives

L142 Arrives

MSO161 Arrives

Med163 Arrives

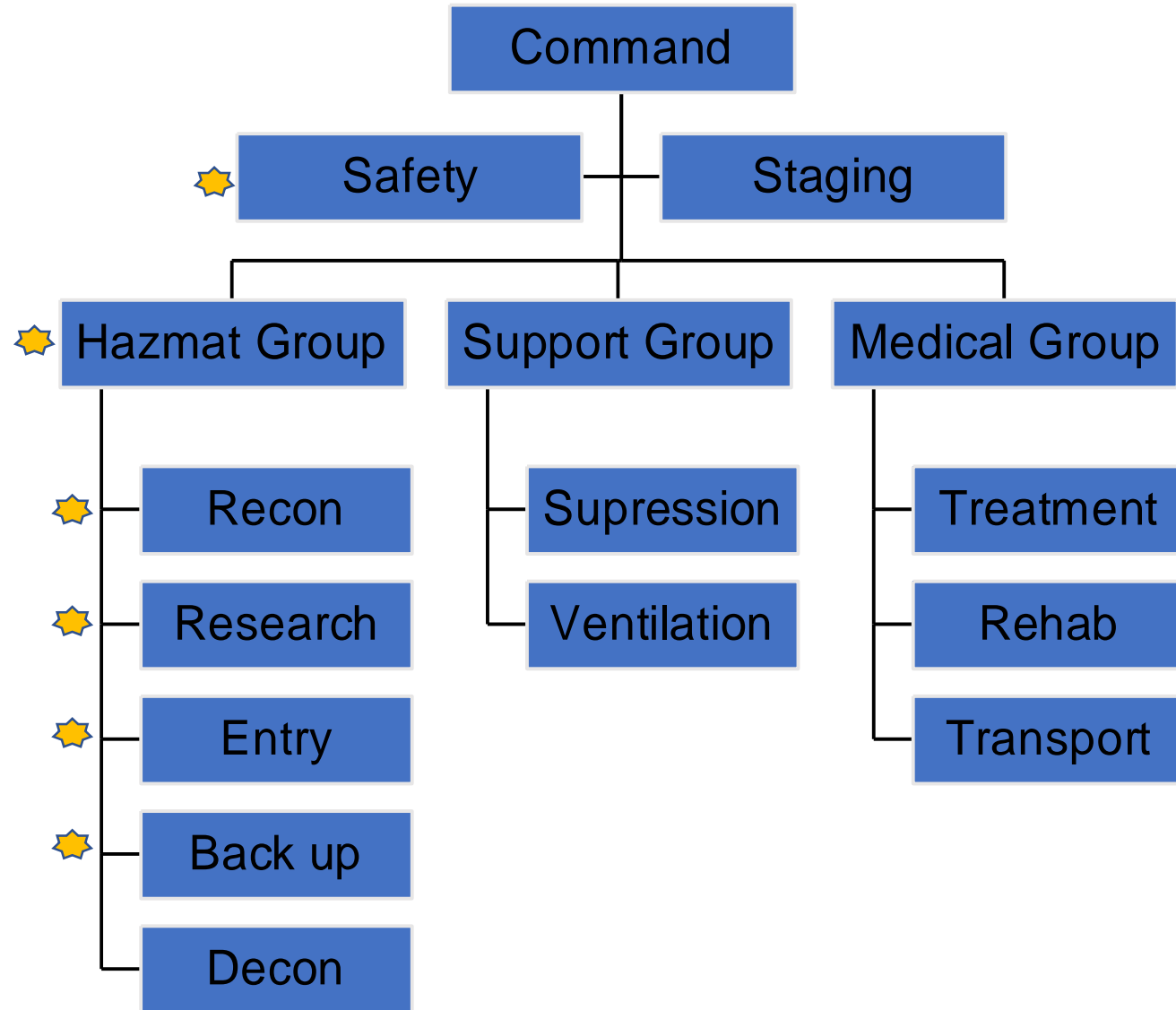
Aid 157 Arrives



HAZMAT Response

Response Plan: HAZ

2 Ladder, 4 Engines, Aid, Medic, 2 BC, MSO, HM106



★ Hazmat Technician

11

17200 Woodinville Duvall Rd

Hazmat: E135, E133, L131, A131, L142, B131, E118, E118, MSO117, M135, HM106

Short report: Report of Propane truck off the road, on its side. Driver is out of vehicle.

B131 you have arrived on scene and assumed **WD Command** from E135 Officer.

The call has been upgraded to a HAZMAT call:

The following units are on scene and assigned:

E135 Patient care

E133 Evacuation

M135 Evacuation

L131 Arrives

A131 Arrives

HM106 Arrives

E118 Arrives

L142 Arrives

MSO117 Arrives

E118 Arrives



Mayday event

6850 NE Bothell Way

E151, E144, E145, E165, L142, L161, A125, B151, B161, MED163, MSO161

Short Report: Commercial Structure Fire at Kenmore Safeway.

On Scene: E151 SB, E165 FA, L142 VV, E145 RIC

B151 you have just arrived on scene and assumed **Safeway command**.

E165 Calls Mayday, Mayday, Mayday, "This is FF Smith E165 tailboard, we are interior FA and the ceiling has collapsed. My LT and Driver are trapped."

E144, A157, L161, and A125 arrive

B161 arrives

MED163, MSO161 arrive

2nd Alarm Arrives: E125, E116, E145, E124, L127, L116, A127, B127, M127

