



40RBX Series

Packaged Air Handling Unit

Nominal: 10-36 Tons



40RBX Series



These fan coil units offer customized arrangement with Carrier's renown dependability.

The **40RBX** air handlers provide an efficient source of conditioned air for factories, shops, offices or restaurants. Coupled with appropriate condensing unit, the **40RBX Series** produce nominal capacities from 120,000 to 400,000 btu/hr.

Slim proportions (less than 910 mm. deep) allow these units to be floor-mounted or ceiling-suspended. Modular construction allow interchangeable fan section arrangement to select optimum air discharge.

Compatible with



38AE Series

38AE Series

Air-cooled condensing units having nominal capacities 200,000 to 400,000 btu/hr. Inside and outside surface ensure long life, excellent finish and corrosion resistance.

Features

- Semi-hermetic reciprocating compressor
- Compact size
- Reliable operation



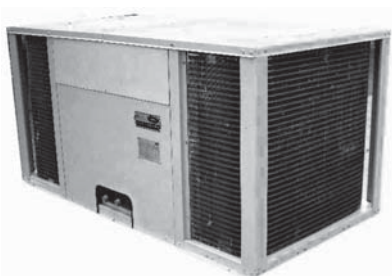
38LB Series

38LB, 38ASC Series

Air-cooled condensing units designed for easy installation and service.

Features

- Fully hermetic Scroll compressor
- Flexible air discharge configuration
- Reliable operation



38ASC Series

Physical data

Description		Model	38LB-SC		38ASC			
			CDU	012	015	140	200	240
		AHU	40RBX					
			012	015	015	020	025	030
Normal Capacity	Cooling Capacity *	btu/h	120,000	150,000	150,000	200,000	240,000	300,000
	Air Flowrate	cfm	4,000	5,400	5,400	7,500	8,600	10,700
Refrigerant			R-22					
CDU								
Operating Weight		kg	240	360	386	418	480	510
Power Supply		V/Ph/Hz	380/3/50					
Dimension	Width	mm	1040	1050	1940	1940	1940	1940
	Height	mm	1050	1150	970	970	1122	1122
	Depth	mm	1,080	1,190	1,040	1,040	1,040	1,040
Condenser Coil	Coil Arrangement	row / fpi	2/15	2/18	2/15	2/15	2/15	2/18
	Coil Face Area	sq.ft	22.66	31.86	41.50	41.50	49.12	49.12
	Coil / Fin Material		Cu/Al	Cu/Al	Cu/Al	Cu/Al	Cu/Al	Cu/Al
	No. of circuit		1	1	2	2	2	2
Compressor	Type		Hermetic Scroll					
	No. of compressor(s)		1	1	2	2	2	2
	Capacity steps		0/100	0/100	0/50/100	0/50/100	0/50/100	0/50/100
Condenser fan	Type		Propeller, Direct Drive					
	Q'ty.....Diameter	inch	1...28"	1...28"	2...24"	2...24"	2...28"	2...28"
	Fan motor power input	V/Ph/Hz	220/1/50	220/1/50	220/1/50	220/1/50	220/1/50	220/1/50
Pipe Connection	Liquid pipe dia.	Q'ty...inch	5/8"	5/8"	2...1/2"	2...1/2"	2...5/8"	2...5/8"
	Suction pipe dia.	Q'ty...inch	1-1/8"	1-3/8"	2...1-1/8"	2...1-1/8"	2...1-1/8"	2...1-3/8"
AHU								
Operating Weight		kg	195	230	230	282	304	505
Power Supply		V/Ph/Hz	380/3/50					
Air Flowrate Range		cfm	3,400 - 4,100	4,400 - 5,400	4,400 - 5,400	6,100 - 7,600	7,000 - 8,600	8,600-10,800
Cooling Coil	Coil Arrangement	row / fpi	3/14	3/14	3/14	3/14	4/14	4/14
	Coil Face Area	sq.ft	8.35	10.91	10.91	15.23	17.39	21.72
	Coil / Fin Material		Cu/Al	Cu/Al	Cu/Al	Cu/Al	Cu/Al	Cu/Al
	TXV Q'ty...Size	ton	1...10	2...7.5	2...7.5	2...7.5	2...10	2...12
	No. of circuit		1	2	2	2	2	2
Fan	Fan Size	inch	10"x10"	12"x12"	12"x12"	15"x15"	15"x15"	18"x18"
	Fan Q'ty		2	2	2	2	2	2
	Standard speed	rpm	789	715	715	638	705	641
Motor	Standard motor size	hp	2	3	3	3	5	7.5
	Motor speed	rpm	1420	1430	1430	1430	1410	1435
	Motor range	hp	2-3	3-5	3-5	3-5	3-5	7.5-10
Accessories	Fan Pulley		225-1B-25	250-1B-30	250-1B-30	280-1B-30	250-1B-30	280-2B-35
	Motor Pulley		125-1B-24	125-1B-28	125-1B-28	125-1B-28	125-1B-28	125-2B-38
	Belt		B-48	B-54	B-54	B-44	B-41	B-72
	Belt Q'ty		1	1	1	1	1	2
Insulation	Type		PE Foam					
	Thermal Conductivity		0.036 w/m.K					
	Thickness		10mm					
Air Filter	Type		Washable Aluminium Filter					
	Q'ty ... Size	inch	1...10"x22"x1"	2...10"x22"x1"	2...10"x22"x1"	3...16"x25"x1"	3...16"x25"x1"	2...16"x20"x2"
	(Width x Height x Thickness)		1...16"x22"x1"	1...10"x25"x1"	1...10"x25"x1"	3...20"x25"x1"	3...20"x25"x1"	6...20"x25"x2"
			1...16"x25"x1"	2...16"x22"x1"	2...16"x22"x1"	1...16"x25"x1"	1...16"x25"x1"	
Pipe Connection	Liquid pipe dia.	Q'ty...inch	1 ... 5/8"	2 ... 5/8"	2 ... 5/8"	2 ... 5/8"	2 ... 5/8"	2 ... 5/8"
	Suction pipe dia.	Q'ty...inch	1 ... 1-1/8"	2 ... 1-1/8"	2 ... 1-1/8"	2... 1-3/8"	2... 1-3/8"	2... 1-3/8"
	Condensate drain dia.		3/4"	3/4"	3/4"	1"	1"	2"
	Condensate drain connection type		Female Pipe Thread					

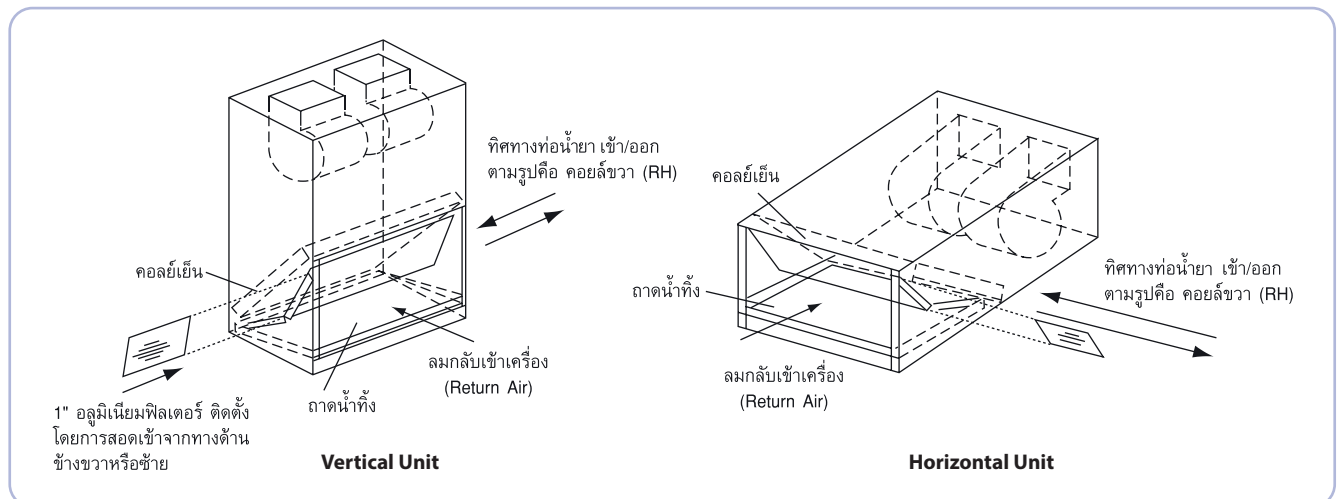
Remark : Cooling Capacity Based Ent-Air Temp 80 Fdb/67 Fwb, Max Air Flowrate.

Physical data

Description		Model	CDU	38AE			
				020	025	030	040
		AHU	40RBX				
020	025		030	040			
Normal Capacity	Cooling Capacity *	btu/h	200,000	280,000	320,000	400,000	
	Air Flowrate	cfm	7,500	8,600	10,700	13,000	
Refrigerant			R-22				
CDU							
Operating Weight		kg	524	583	620	651	
Power Supply		V/Ph/Hz	380/3/50				
Dimension	Width	mm	2200	2200	2200	2200	
	Height	mm	1300	1300	1300	1300	
	Depth	mm	1,610	1,610	1,610	1,610	
Condenser Coil	Coil Arrangement	row / fpi	1.5/15	3/15	3/15	3/15	
	Coil Face Area	sq.ft	42.94	42.94	54.00	54.00	
	Coil / Fin Material		Cu/Al	Cu/Al	Cu/Al	Cu/Al	
	No. of circuit		1	1	1	1	
Compressor	Type		Semi-Hermetic Reciprocating				
	No. of compressor(s)		1	1	1	1	
	Capacity steps		0/50/100	0/66/100	0/66/100	0/66/100	
Condenser fan	Type		Propeller, Direct Drive				
	Q'ty.... Diameter	inch	2...28"	2...30"	2...30"	2...30"	
	Fan motor power input	V/Ph/Hz	220/1/50	380/3/50	380/3/50	380/3/50	
Pipe Connection	Liquid pipe dia.	O'ty...inch	7/8"	7/8"	7/8"	7/8"	
	Suction pipe dia.	O'ty...inch	1-5/8"	1-5/8"	2-1/8"	2-1/8"	
AHU							
Operating Weight		kg	282	304	505	525	
Power Supply		V/Ph/Hz	380/3/50				
Air Flowrate Range		cfm	6,100 - 7,600	7,000 - 8,600	8,600-10,800	10,500 -13,100	
Cooling Coil	Coil Arrangement	row / fpi	3/14	4/14	4/14	4/14	
	Coil Face Area	sq.ft	15.23	17.39	21.72	26.30	
	Coil / Fin Material		Cu/Al	Cu/Al	Cu/Al	Cu/Al	
	TXV Q'ty...Size	ton	2...7.5	2...10	2...12	2...15	
	No. of circuit		2	2	2	2	
Fan	Fan Size	inch	15"x15"	15"x15"	18"x18"	18"x18"	
	Fan Q'ty		2	2	2	2	
	Standard speed	rpm	638	705	641	641	
Motor	Standard motor size	hp	3	5	7.5	7.5	
	Motor speed	rpm	1430	1410	1435	1435	
	Motor range	hp	3-5	3-5	7.5-10	7.5-10	
Accessories	Fan Pulley		280-1B-30	250-1B-30	280-2B-35	280-2B-35	
	Motor Pulley		125-1B-28	125-1B-28	125-2B-38	125-2B-38	
	Belt		B-44	B-41	B-72	B-72	
	Belt Q'ty		1	1	2	2	
Insulation	Type		PE Foam				
	Thermal Conductivity		0.036 w/m.K				
	Thickness		10mm				
Air Filter	Type		Washable Aluminium Filter				
	Q'ty ... Size	inch	3...16"x25"x1"	3...16"x25"x1"	2...16"x20"x2"	2...16"x20"x2"	
	(Width x Height x Thickness)		3...20"x25"x1"	3...20"x25"x1"	6...20"x25"x2"	6...20"x25"x2"	
Pipe Connection	Liquid pipe dia.	O'ty...inch	2 ... 5/8"	2 ... 5/8"	2 ... 5/8"	2 ... 7/8"	
	Suction pipe dia.	O'ty...inch	2... 1-3/8"	2... 1-3/8"	2... 1-3/8"	2 ... 1-3/8"	
	Condensate drain dia.		1"	1"	2"	2"	
	Condensate drain connection type		Female Pipe Thread				

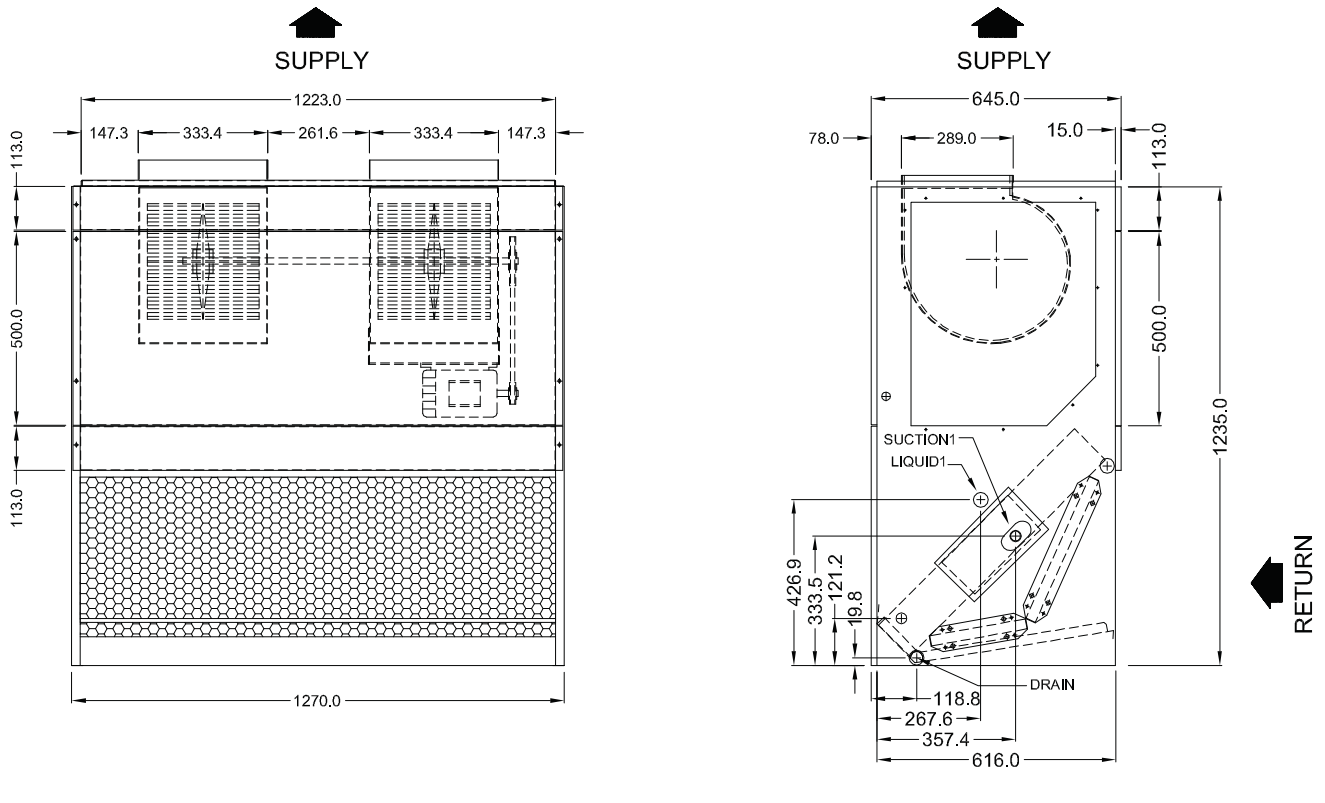
Remark : Cooling Capacity Based Ent-Air Temp 80 Fdb/67 Fwb, Max Air Flowrate.

Coil connection

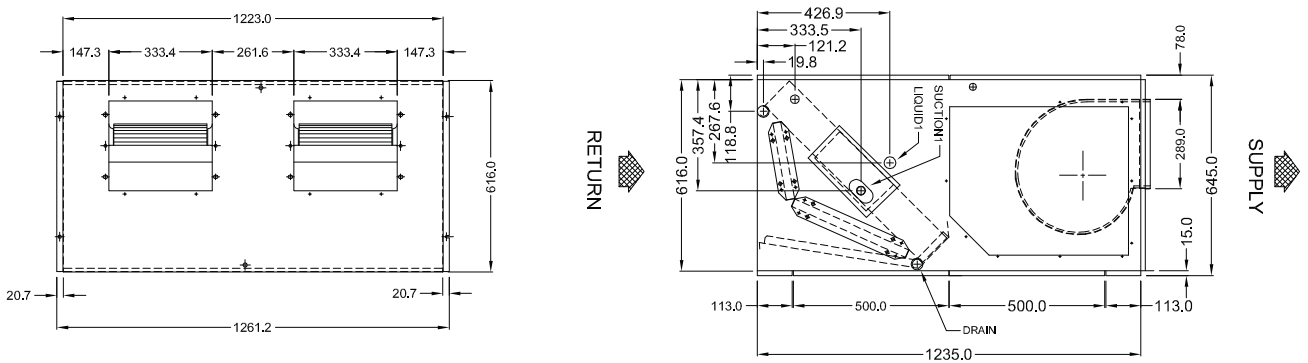


Unit dimensions

40RBX012 Vertical Type

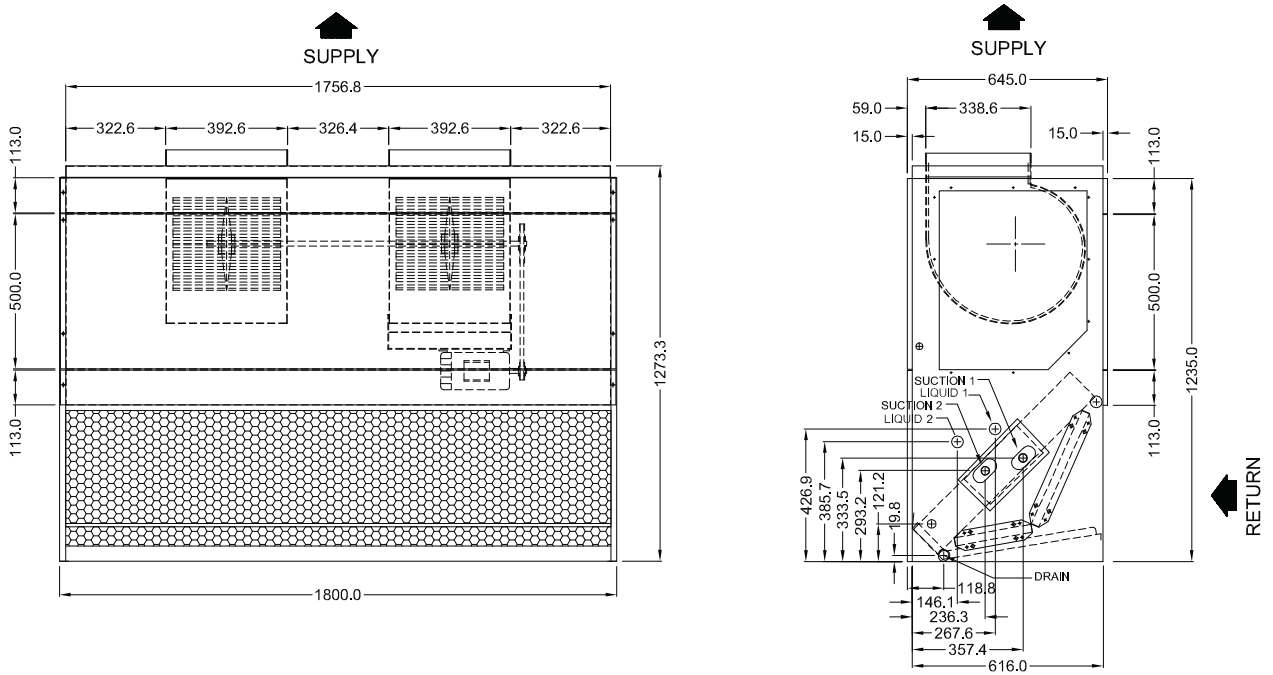


40RBX012 Horizontal Type

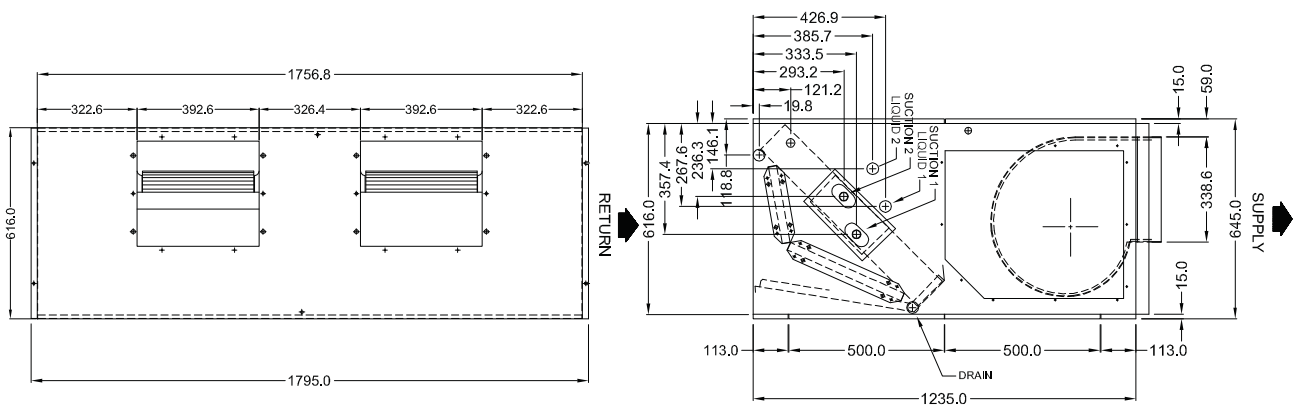


Unit dimensions

40RBX015 Vertical Type

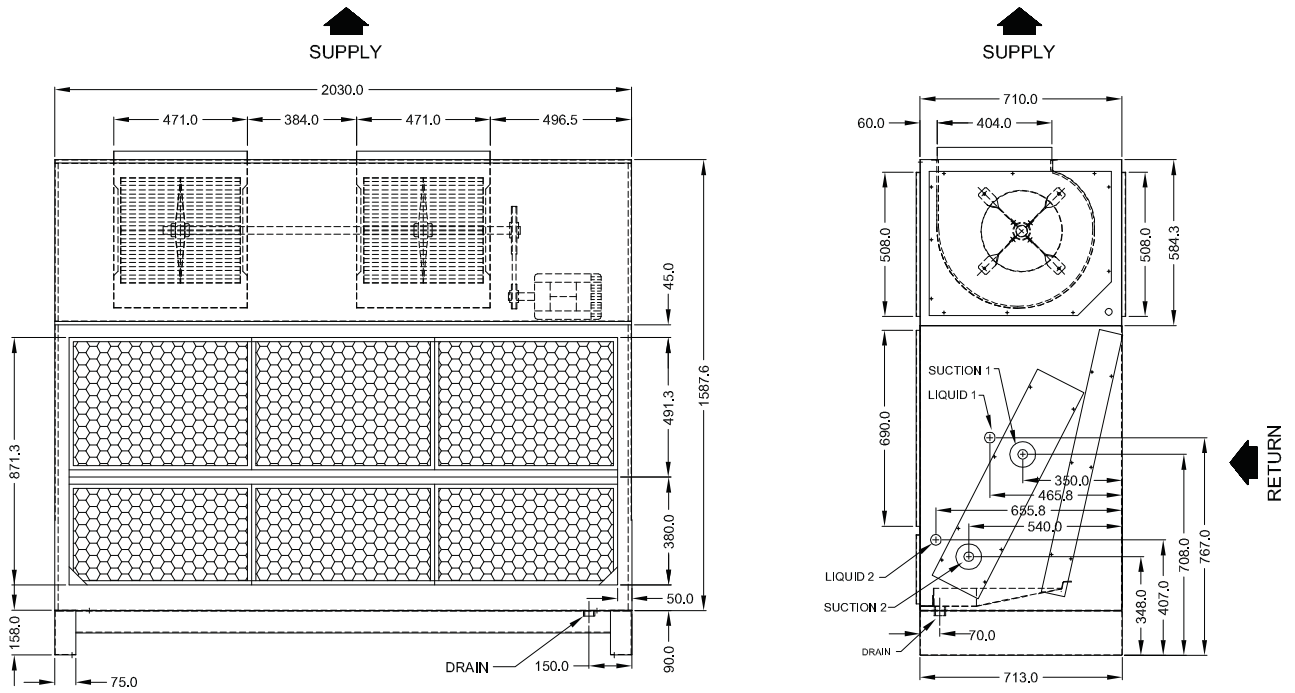


40RBX15 Horizontal Type

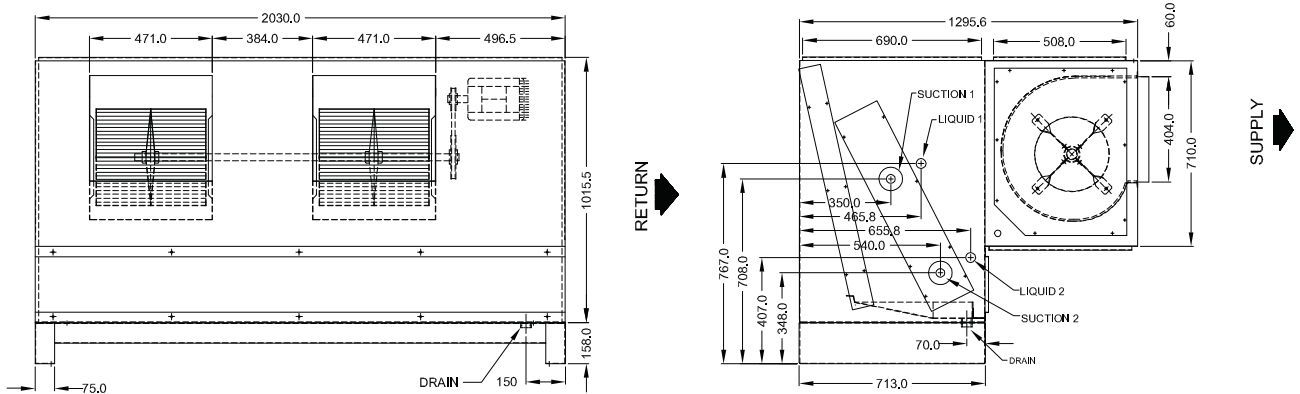


Unit dimensions

40RBX020, 025 Vertical Type

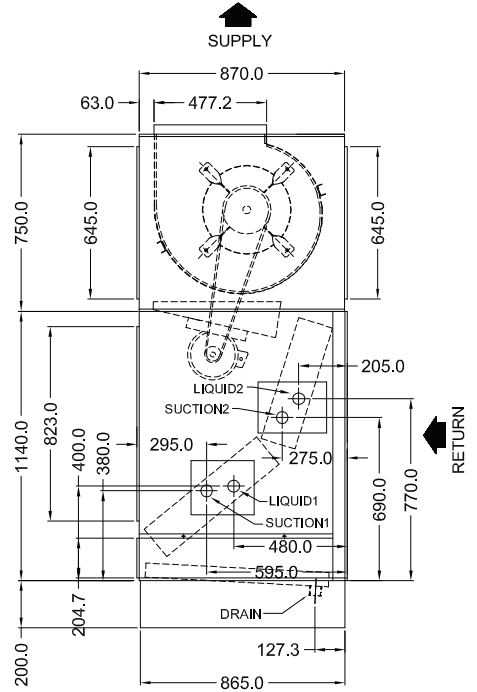
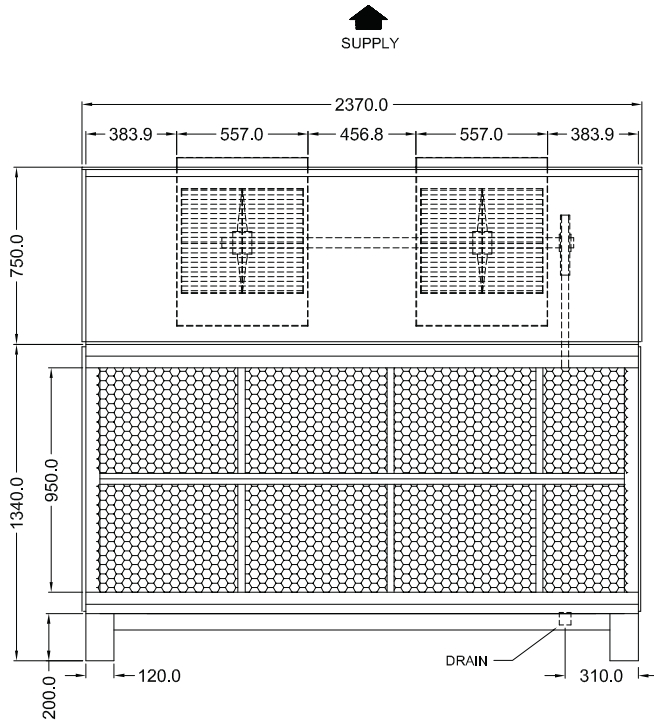


40RBX020, 025 Horizontal Type

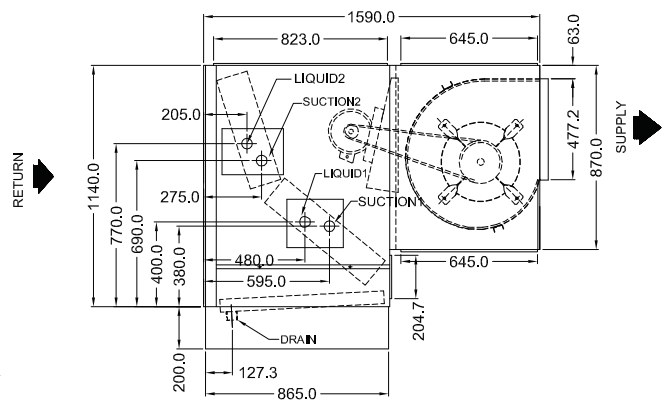
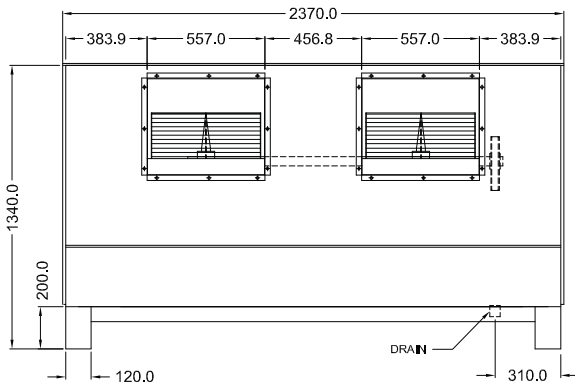


Unit dimensions

40RBX030, 040 Vertical Type

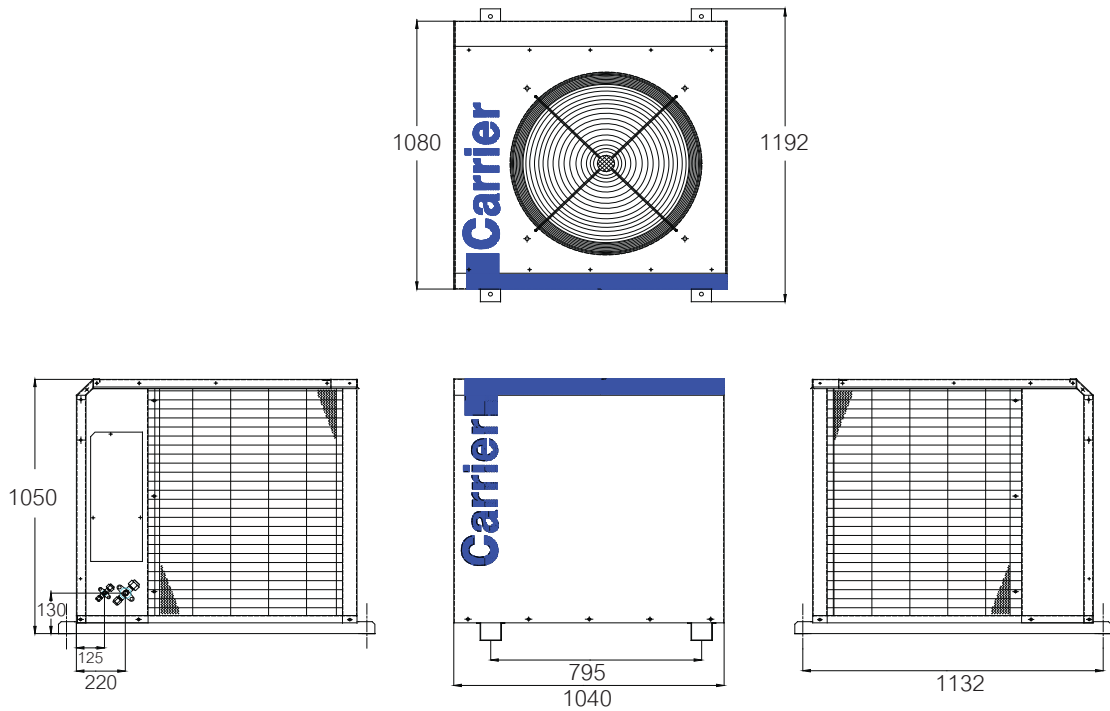


40RBX030, 040 Horizontal Type

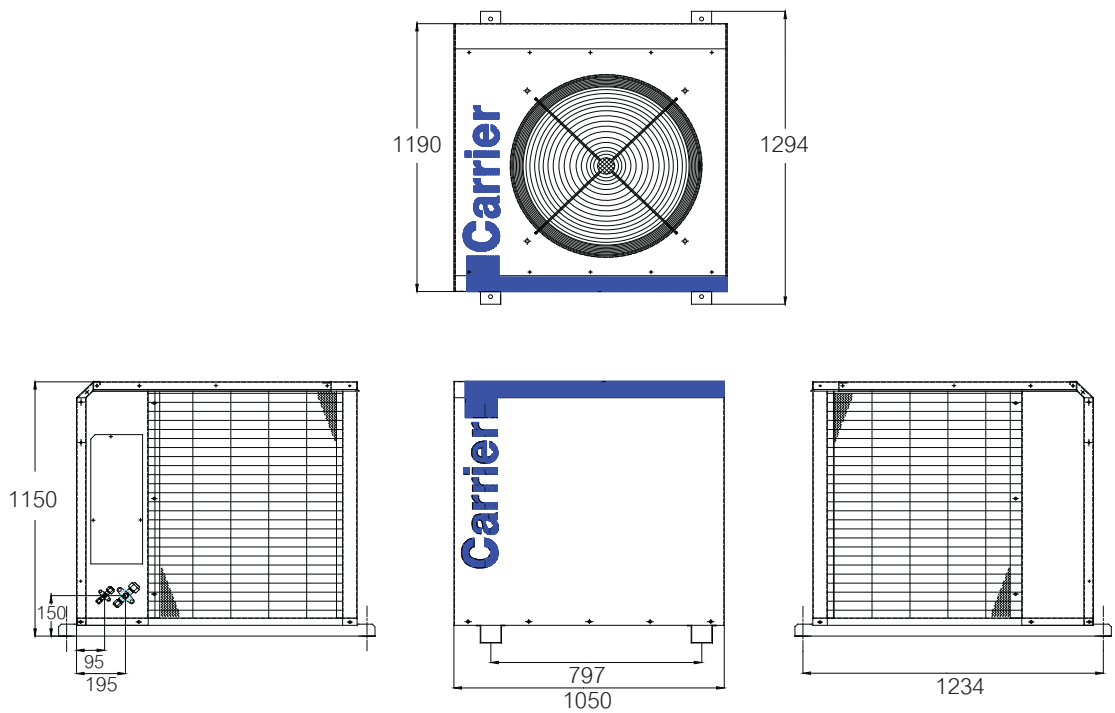


Unit dimensions

38LB012SC

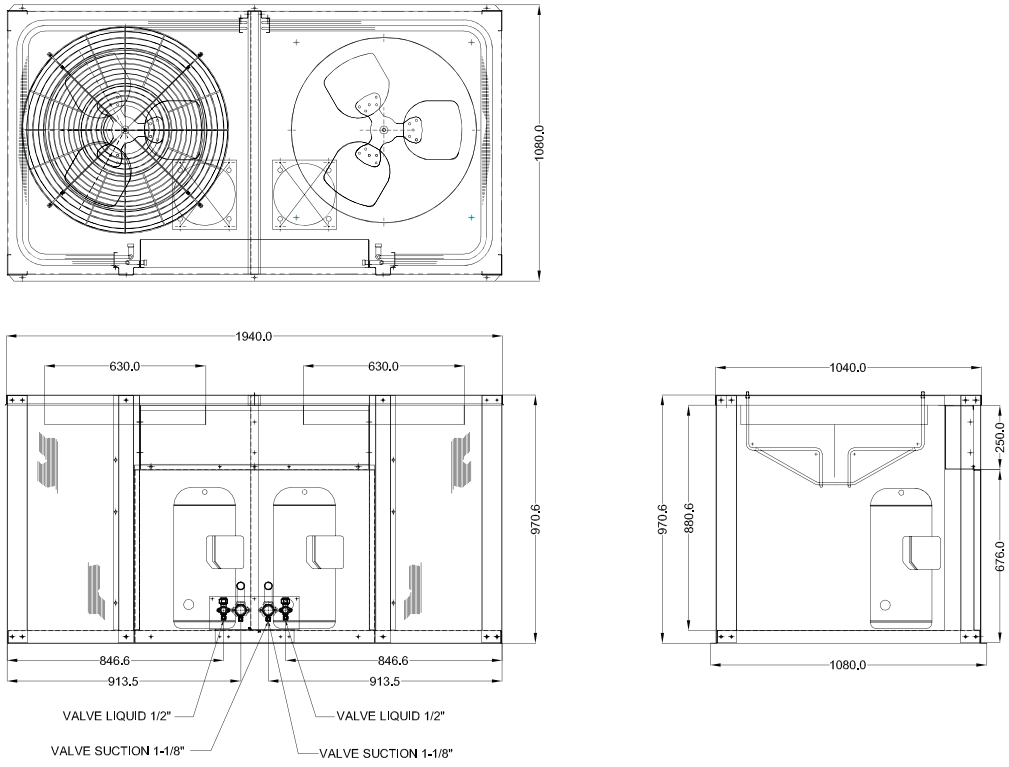


38LB015SC

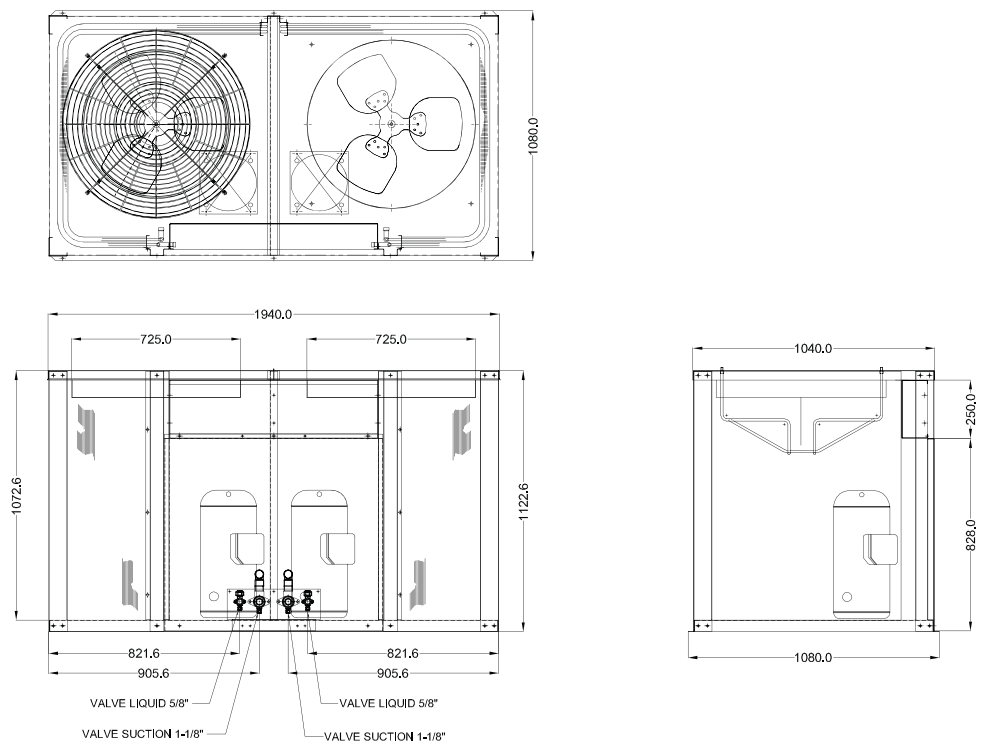


Unit dimensions

38ASC200

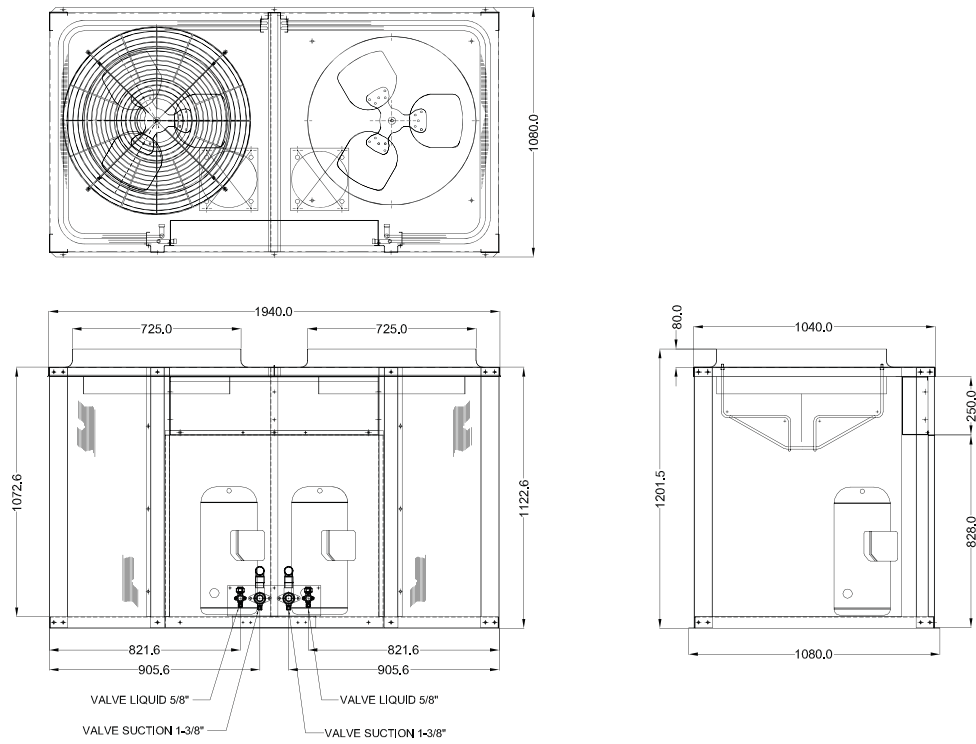


38ASC240

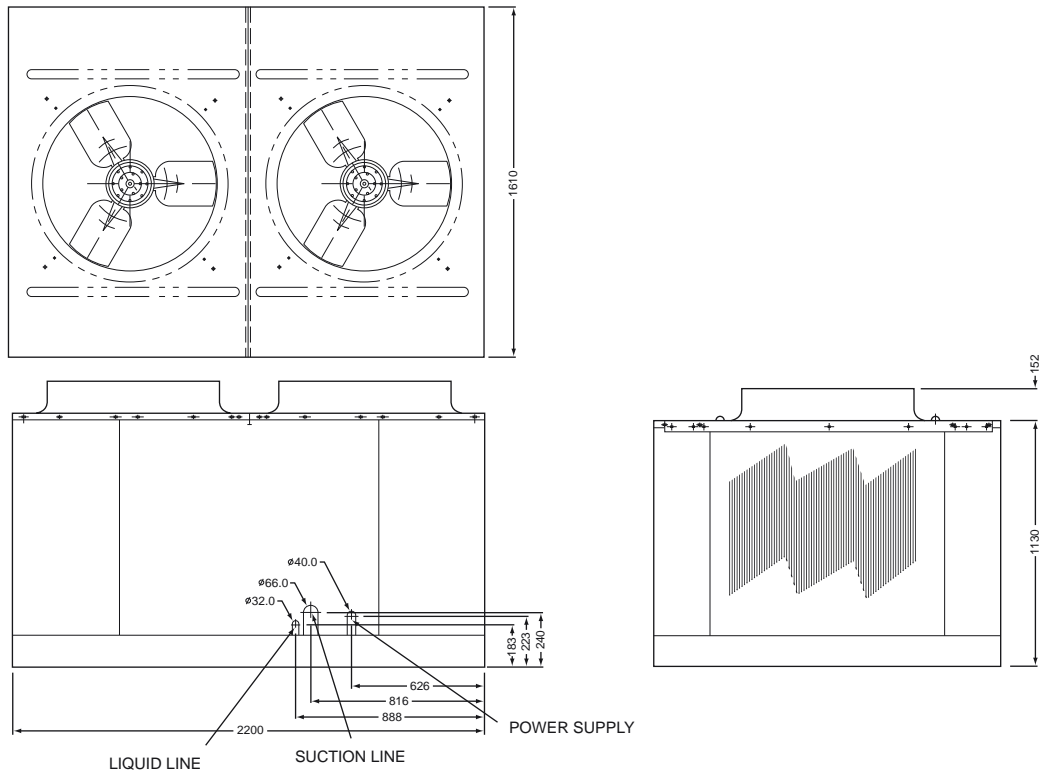


Unit dimensions

38ASC300



38AE020-040





บริษัท แคนเรียร์ (ประเทศไทย) จำกัด

1858/63-74 อาคารทีซีไอเอฟ ทาวเวอร์
ชั้น 14,15 ด.บางนา-ตราด กม. 4.5
บางนา กรุงเทพฯ 10260
โทร. 0-2762-9222 แฟกซ์: 0-2751-4778

Carrier (Thailand) Ltd.

1858/63-74, TCIF Tower,
14th, 15th Floor, Bangna-Trad Road, Km. 4.5,
Bangna, Bangkok 10260 Thailand
Tel. 0-2762-9222 Fax: 0-2751-4778

Carrier reserves the right to make changes in specifications without prior notice.
บริษัทฯ ขอสงวนสิทธิ์ที่จะเปลี่ยนแปลงรายละเอียดข้างต้น โดยไม่ต้องแจ้งให้ทราบล่วงหน้า



YOUR CARRIER MAN :