

The Orlando Amphitheater AT CENTRAL FLORIDA FAIRGROUNDS

4603 West Colonial Drive

Orlando, Florida 32808

407-295-3247

VENUE CONTACTS:

Shawn Krauel- CEO/President- Shawn@centralfloridafair.com 407-221-7834

POLICE: DAVE MCKINNON- OPD/FAIRGROUNDS 770-362-0179

ACCURATE EVENT SECURITY MANAGER: BILLY TOLAN 561-201-8810 WTOLAN@ACCURATEEVENTGROUP.COM

PRODUCTION MANAGER: AMP- CONTACT SHAWN KRAUEL FOR CONTACTS/SCHEDULE

CITY OF ORLANDO FIRE RESCUE/CITY OF ORLANDO EMT/PYRO PERMITTING CITY OF ORLANDO



Stage and Production Elements

Overall stage size: 96'-0" wide by 44'-0" deep, Height is "5" at the downstage edge concrete

The stage will support approx. 12,000 Lbs in an 8'-0" by 8'-0" section with the weight distributed evenly.
Roof structured for 60,000 pounds.

Main Stage Area: 60'-0" wide by 44'-0" deep

Stage Right Wing: The downstage section is 18'-0" wide by 24'-0" deep with 16x16 Covered Structure
Sound Chase on stage.

Stage Left Wing: The downstage section (Monitor Mix position) is 18'-0" wide by 20'-0" deep with 16x16 Covered Structure

The upstage section (Loading Dock area) is 16'-0" wide by 20'-0" deep
2 Self leveling Dock Lifts

Mix Position

- 20' wide x 20' deep with 19x19 Covered Structure
- (4) Quad Boxes
- 100' from stage
- 100 Ft Sound Chase to FOH to Center Stage

Power

- Stage Right:
 - (1) 400 amp 3 phase with (5) Camlock tails Backstage Right
 - (1) 400 Amp 3 Phase with (5) Camlock tails Backstage Left
 - Multiple 20 amp services around stage.

Dressing Rooms

- (2) 12x56 2 Room Trailers with Center Space room with Restroom
- (1) 12x44 1 Room Trailer with Central Space room with Restroom
- 10,000 Sq Ft AC Building available as well for Green Room/Hospitality- No Restroom.

Showers:

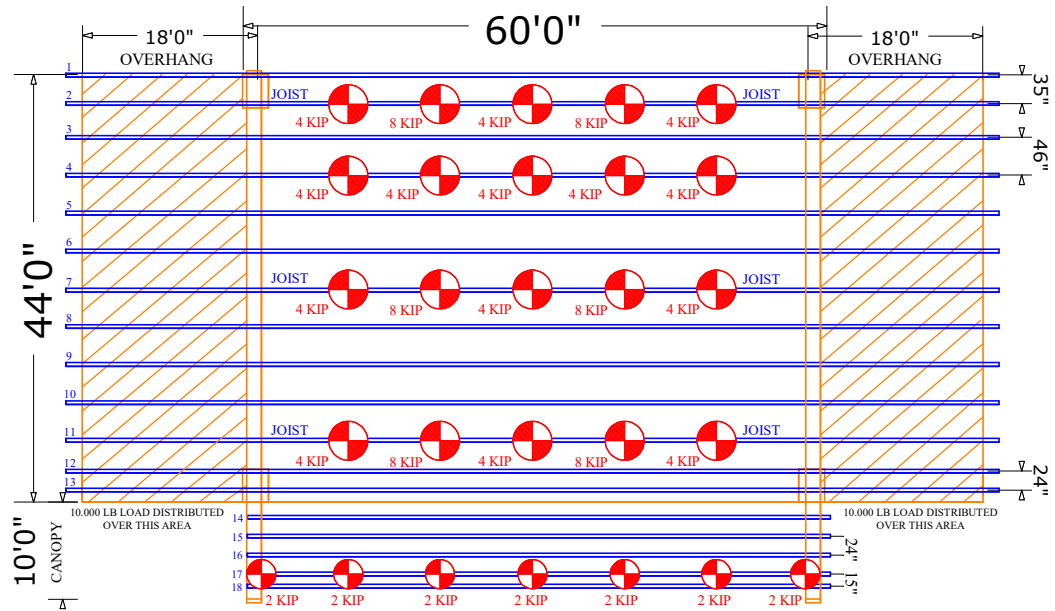
- On-site Showers avail before show on grounds. Check with Amp Manager/Tech Day of show and Advance.

RIGGING SYSTEM

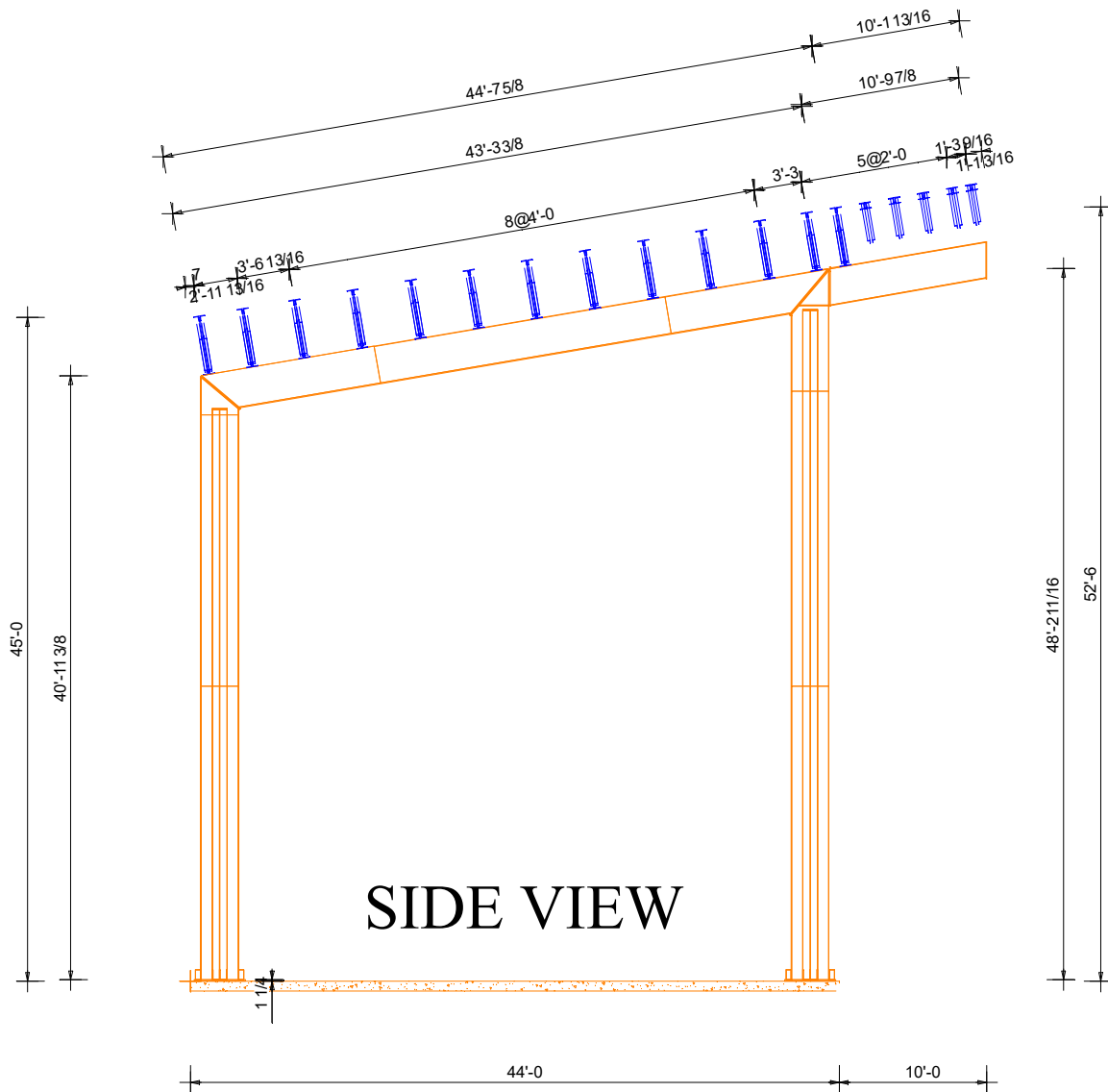
Orlando Amphitheater utilizes Ocean State Event Services for all Rigging on Amphitheater Stage. Standard show staffing for riggers is 3 Riggers for 4 hr in and 4 hr out. All shows will be advanced on rigging plot by advancing with Tech Manager and contacting for staffing. A 60 Ft lift is provided by house.

Tim at Ocean State Event Services, Inc.
1461 Kastner Place, Suite 101
Sanford, FL 32771
(407) 324-7811 Office
(407) 324-7819 Fax
pam@theoceanstategroup.com

RIGGING



FRONT OF STAGE



SIDE VIEW



STANDARD SHOW SECURITY LOCATION TEMPLATE

Barricade In-House: Stage Sonco- 120 Feet



Bus and Event Parking



- Tour Buses: Concrete Parking for 8 Buses near Stage. Up to 25 in Grass Parking- Shore Power Water available. Let us know Amp requirements in advance- 30/50 Amps available for Grass Camping Ground Parking

DIRECTIONS

**I-4 From the west
Head West on HYWY-50 W. Colonial 3.9 Miles - Fairgrounds in on Right hand side. Take Mercy Drive North to Fairgrounds rd on left. Follow to East Gate.**

All Trucks/Buses will enter East Gate Entrance for Backstage Entrance. Check with Production Manager/Amp Manager during Advance.

Amphitheater Rules and Regulations

Sound and Stage

Sound Curfew for all shows are as follows:

Sunday-Thursday 11pm Hard Close for Sound.

Friday and Saturday shows- 11:30pm Hard Close for Sound.

No PA prior to 9am

Tech Supervisor will be responsible for all Load in scheduling and Production Management with all tours/shows. Schedule and Advance to be done at least 7 days before event.

BE RESPECTFUL OF NEIGHBORHOOD WITH BASS LEVELS/PA LEVELS AND KEEPING PA AND SOUND LEVELS WITHIN THE AMPHITHEATER AND FAIRGROUNDS GATES AND NOT BLEEDING OUT.

Tents

All Tent locations are to be approved by CFF prior to setup
All tents to be weighted/No Staking without CFF Approval Tents
subject to permit fees if required by City of Orlando Code Fire
Extinguisher/Permit posted as required by City of Orlando