

FENDT



FENDT® 500 S4 SERIES | 124 to 163 HP

Big power in a small, maneuverable package

Four hundred years ago, the Fendt® name earned distinction as a small but prosperous German clockworks.

These early mechanical engineers put everything they knew — and every innovation they would discover — into every build, whether it was a massive clock on a towering church, or a smaller model mounted in a town square.

Their works and their family name came to stand for precision, performance and durability. Four hundred years later, they still do. And when we set out to build this compact, maneuverable four-cylinder tractor, nobody wanted to build an “entry-level” Fendt. No, we wanted to build our most versatile, all-around tractor. So we did.

The Fendt 500 S4 Series has “time” in its heritage and in its purpose — as an ideal fit for the times in which you live and farm today.

It's Fendt. It's Time.



IT'S TIME FOR A SMALLER TRACTOR THAT DOESN'T SACRIFICE MUSCLE FOR AGILITY.



FENDT 500 S4 SERIES

Quick Specs and Features

Weight: 13,340 lbs. (6,050 kg)	Optional CargoProfi loader
Engine HP: 123–163 HP	VisioPlus™ Cab with panoramic front windshield
Engine: Tier 4 Final, 4-cylinder	Optional front PTO, 3-point and hydraulics
Max ballast weight: 23,148 lbs. (10,500 kg)	7" or 10.4" Varioterminale
Loader payload: 5,889 lbs. (2,671 kg)	LED work lights
Maximum speed: 31 mph (50km/h)	Standard mechanical cab suspension with optional 3-point pneumatic suspension
Maintenance-free, self-leveling front axle suspension	

Ideal for: Loader work
Conventional hay
Light tillage
Snow blowing
Roadside mowing
Transport work

Fendt 500 S4 Series at a glance

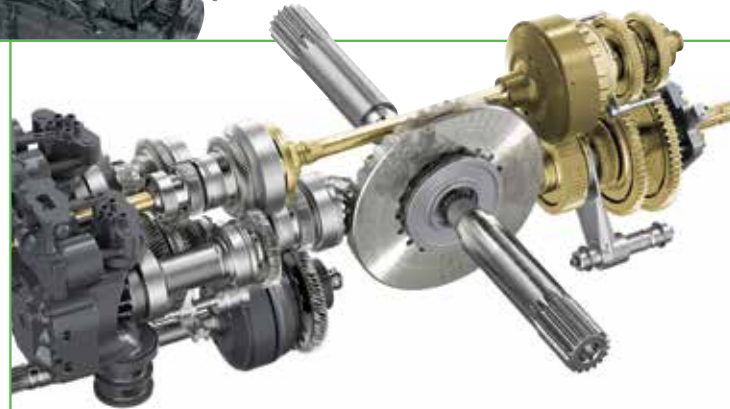
These all-purpose tractors are built to be the primary tractor — or only tractor — on your farm or in your municipality. Aside from lower weight and horsepower, you get nothing less in the 500 S4 Series than you get in any other Fendt tractor. Others talk about adaptability, maneuverability, productivity, comfort and profitability. But no one is more obsessed than Fendt with actually engineering them into every tractor we make.

What makes a Fendt a Fendt?



The powerful four-cylinder engine maximizes efficiency through its Tractor Management System (TMS); set the desired speed, activate the TMS and the system automatically adjusts for optimum performance

A 7-in. or optional 10.4-in. touch screen terminal paired with a customizable multi-function joystick puts everything you need to operate the tractor right at your fingertips



Stepless Vario CVT, with no clutch packs, optimizes engine power and fuel economy, with seamless travel from 61 ft/h to 31 mph


Racecar-influenced, self-leveling front-axle suspension system, with more than 3.9-in. of travel, coupled with a second-to-none pneumatic cab suspension and air-ride seat provides the sophisticated comfort of a luxury pickup truck, even in the field



The best warranty in the business — three-year/3,000-hour full-machine warranty, PLUS all scheduled maintenance and a loaner guarantee



A smart loader that actually improves precision and saves you money

A large, open field of green grass under a bright sky. In the foreground, a large, cylindrical hay bale is wrapped in clear plastic. To the right, a red tractor is partially visible, with its rear wheel and part of its body. The field is divided into sections by mowed paths or furrows. The overall scene is a rural, agricultural landscape.

*IT'S TIME FOR A TRACTOR THAT GIVES YOU THE POWER TO CONTROL IT ALL.
WELL, MAYBE NOT THE WEATHER.*



If you're considering a Fendt, you're serious about your tractor. And about the quality of the work you do. The 500 S4 Series uses a high-torque, exceptionally smooth and quiet engine to deliver unmatched power and fuel savings. The four-cylinder engine and stepless CVT automatically regulate and optimize engine load based on power requirements, so you get maximum power whether you're going 60 ft/h or 31 mph. It's the kind of dynamic operating experience that makes you glad you didn't settle for something less.

- The Tractor Management System ensures the engine and CVT are always working at maximum efficiency, with minimal fuel consumption and component wear, whether you're roading or doing heavy-duty pulling

*IT'S TIME FOR A WARRANTY THAT LETS YOU HANDLE FUEL AND LABOR,
WHILE WE HANDLE EVERYTHING ELSE.*





Four-hundred years after the Fendt family of clockmakers built a reputation for personally servicing and maintaining each clock they installed, we still believe a great warranty isn't a matter of profit, it's one of pride. The Fendt Gold Star Maintenance, Service and Warranty Program is the best in the business, with a commitment not only to uptime all the time, but to maintaining an **exceptional resale value.**

The warranty

Three years or 3,000 hours, including all scheduled routine maintenance and all other repairs, as required

The parts

Fendt dealers use only genuine AGCO® parts, so your Fendt is always 100% Fendt. All parts are covered for one year, and all labor for six months, under the AGCO Parts Advantage warranty

The service

Fendt dealers and their certified technicians use only the highest-caliber diagnostic tools

The loaner

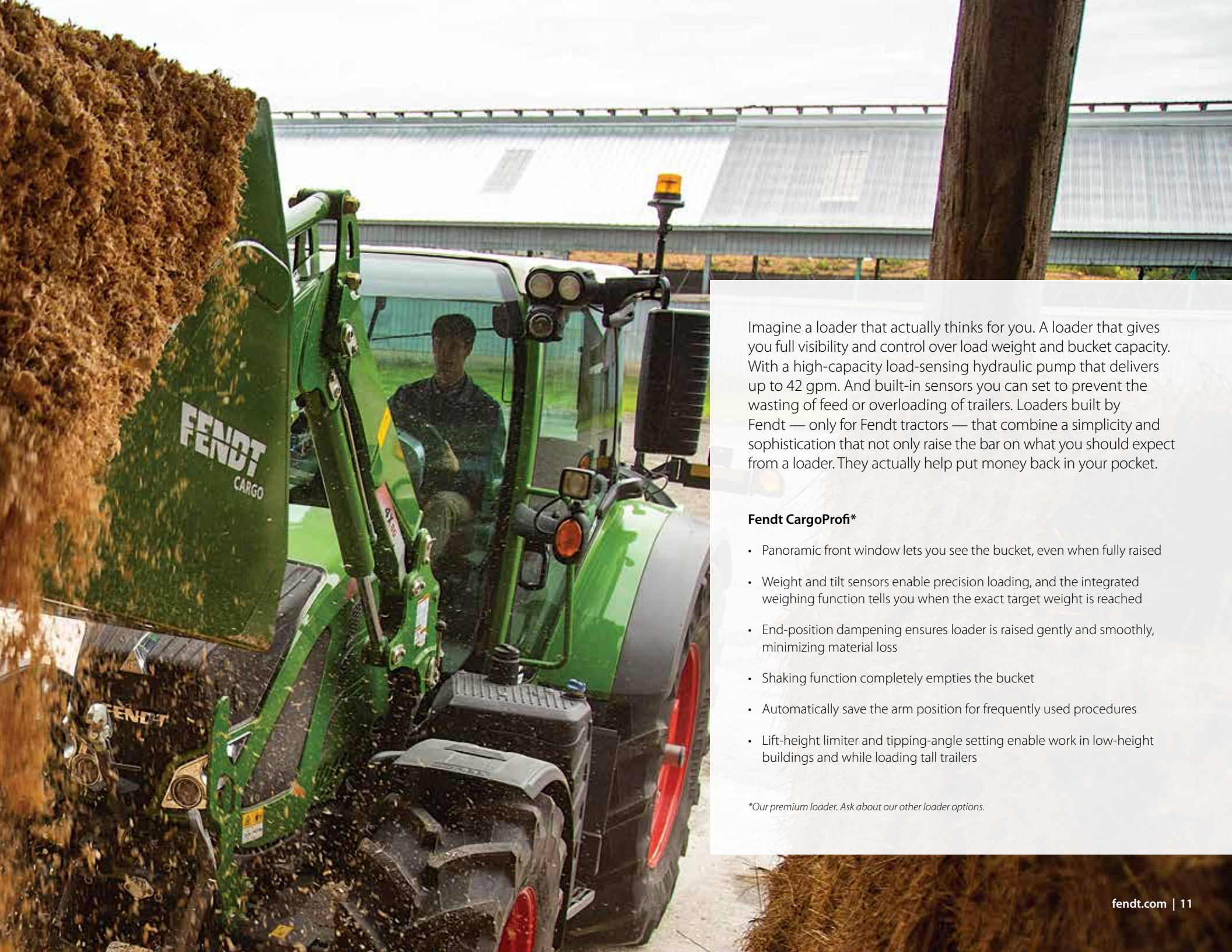
If your tractor can't be repaired in 48 working hours* we'll provide you a loaner tractor. We stand by this promise for three years or 3,000 hours

**12 working hours per day*



A large, textured pile of golden-brown hay or straw dominates the foreground and middle ground. The pile is uneven and appears to be a significant volume of material. In the background, a wooden post stands on the left, and a portion of a light-colored building is visible. The sky is a pale, overcast blue. The overall scene is rural and agricultural.

IT'S TIME TO RETHINK WHAT A LOADER CAN DO.



Imagine a loader that actually thinks for you. A loader that gives you full visibility and control over load weight and bucket capacity. With a high-capacity load-sensing hydraulic pump that delivers up to 42 gpm. And built-in sensors you can set to prevent the wasting of feed or overloading of trailers. Loaders built by Fendt — only for Fendt tractors — that combine a simplicity and sophistication that not only raise the bar on what you should expect from a loader. They actually help put money back in your pocket.

Fendt CargoProfi*

- Panoramic front window lets you see the bucket, even when fully raised
- Weight and tilt sensors enable precision loading, and the integrated weighing function tells you when the exact target weight is reached
- End-position dampening ensures loader is raised gently and smoothly, minimizing material loss
- Shaking function completely empties the bucket
- Automatically save the arm position for frequently used procedures
- Lift-height limiter and tipping-angle setting enable work in low-height buildings and while loading tall trailers

**Our premium loader. Ask about our other loader options.*

*IT'S TIME FOR TECHNOLOGY THAT'S INTUITIVE.
NOT INTIMIDATING.*





From the moment you climb inside the cab, sink into the air-suspended seat and feel the luxury pickup truck-like fit and finish that engulfs you, you know you're in a tractor like no other. Through the windshield, your view is panoramic and unobstructed. As you support your arm on the floating armrest, survey the color-coordinated operating controls and grip the multi-function joystick, it hits you: everything you need to operate the tractor and its implements is at your fingertips. You also realize you're in a tractor perfectly designed to be one with its operator. And one you simply can't wait to drive by the neighbors.

- **Varioterminal** Clear, practical, 10.4-in.* display with full-screen, half-screen and split-screen modes, or a four-in-one view, with each section displaying a different function; fully integrates tractor and implement controls, camera function, guidance and documentation.
- **Fendt Guide** Work with the utmost precision without having to actively steer, when using wide implements or even in poor reception; reduced product overlapping could save 3–10%.
- **Fendt TaskDoc®** Quickly capture — and wirelessly transfer — data like seed-quantity, fertilizer applied or fuel consumption per acre for analysis and documentation.
- **Fendt TaskDoc Pro** Record GPS position data and transfer it in near real-time, enabling mapping and automated, seamless exchanges with ISOXML-compatible field files.
- **Fendt Rate Control** Call up, visualize on application maps and automatically execute variable-rate application of seeds, fertilizer and pesticides, based on agronomic needs. Plan farm inputs in field files, precisely apply them every time and save on operating inputs.
- **Fendt Section Control for ISOBUS implements** Fully automatic section control ensures seeds, fertilizer and pesticides are applied evenly and economically, preventing overlaps. Switch up to 36 sections when operating ISOBUS-capable planters, drills or sprayers.

**7" option also available*

IT'S TIME FOR PRACTICAL DATA MANAGEMENT YOU CAN ACTUALLY USE.



Fendt Connect™ is like a control tower for your fleet, seamlessly linking your operators, your office and your dealer. Through one easy-to-use interface — on a smartphone, tablet or laptop — Fendt Connect provides cellular connection that keeps you connected to the field and your dealer. It's robust data visualization that enables remote, real-time monitoring, decision-making and even diagnostics.

Your Office See where your machines are, what they're doing and how they're performing, in near-real time or historically. From anywhere. This operational visualization enables everything from scheduling timely refueling to providing documentation for invoicing

Your Dealer Should you enable it, your dealer can remotely access and monitor fault codes and performance parameters, anticipating or diagnosing problems that can speed up service, minimize downtime and reduce cost

Your Operators Operators can focus on their task at hand, knowing both you and your dealer are practically right there with them in the cab

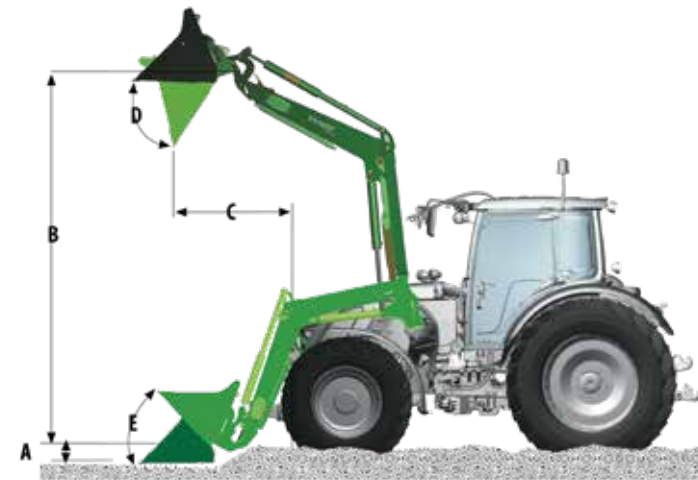
FUSE
SMART FARMING. SYNCHRONIZED.

Learn more or get started at
get.agcoconnect.com/fendt500

Fendt 500 S4 Series Specifications

	512	513	514	516
Engine				
Rated power ECE R120 (HP / kW)	124 / 91	133 / 98	150 / 110	163 / 120
Rated PTO power (HP / kW)	107 / 79	114 / 84	124 / 91	137 / 101
No. of cylinders / cooling	4 / water			
Cubic capacity (in. ³ / cm ³)	246 / 4,038			
Rated engine speed (RPM)	2,100			
Engine speed at max. power (RPM)	1,900			
Max. torque 1,500 RPM (ft lb / Nm)	405 / 550	435 / 590	478 / 649	506 / 687
Torque rise (%)	42	40	38	33
Fuel tank (gal / l)	78.7 / 298			
DEF tank (gal / l)	8.1 / 31			
Oil change interval operating hours	500			
Transmission / PTO				
Continuously variable Vario transmission model	ML90			
Speed range (forward / reverse)	Forward: 60 ft/h to 31 mph (20 m/h to 50 km/h) Reverse: 60 ft/h to 20.5 mph (20 m/h to 33 km/h)			
Rear PTO	540 / 1000			
Front PTO (optional)	1000			
Linkage				
Type of control	Electro hydraulic			
Hydraulic pump capacity (GPM / l/min)	29 (110) / Optional 42 (158)			
Max. rear 3-point lift capacity (lb / kg)	15,000 / 6,803			
Front linkage max. lift capacity (lb / kg)	7,688 / 3,487			
Hydraulic remotes	Rear – 3 Std. / Up to 5 opt., Front – Up to 2 opt.			
Weights and Dimensions*				
Overall length (in. / mm)	175 / 4,453			
Width (in. / mm)	98.5 / 2,501			
Overall height cab (in. / mm)	117 / 2,965			
Wheelbase (in. / mm)	100.8 / 2,560			
Unladen weight (lb / kg)	6,050 / 13,338			
Perm. overall weight (lb / kg)	10,500 / 23,148			
Electrical Equipment				
Starter (kW) battery	4			
Alternator	14.4 V / 200 A			

*Standard wheels in U.S.: 16.9R28 / 20.8R38



Loader specifications

Model	4X/75	4X/80
A Digging depth in. ¹	6	6
B Lifting height in. ¹	163	163
C Dumping distance in. ¹ [B = 11.4 ft. (3.5 m)]	63.3	63.3
C Dumping distance in. ¹ [B = max.]	45	45
D Angle of emptying	55°	55°
E Angle of backwards tilt	48°	48°
Lift capacity over full height lbs.	4,361	5,080
Maximum lift capacity lbs.	5,058	5,889

FENDT

fendt.com | Fendt is a worldwide brand of AGCO.



FENDT 500 S4 SERIES