

500 Series Hydraulic Power Units

*Pressures to 3000 psi
Flows to 3 gpm*



Power Unit Features

The 500 Series hydraulic power units offer you the durability of top quality industrial power units in an economical package. The integral motor, pump, relief and check valves and reservoir provide a complete system lacking only your linear or rotary actuators. These power units are available in a wide variety of configurations. The reversing option enables you to eliminate external directional valves keeping package cost and complexity to a minimum.

Daily, these high quality power units are hard at work positioning medical equipment; in drill fixtures and other tooling applications; helping to process food; driving plastic molding equipment, and in packaging, printing and testing equipment. Let them go to work for you.

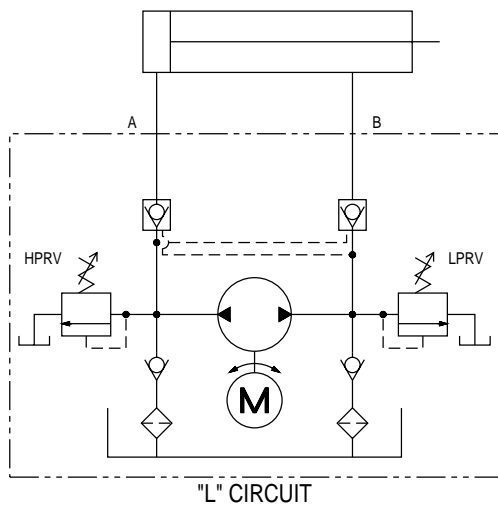
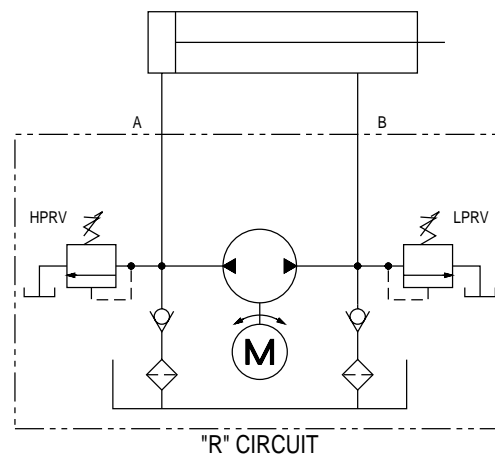
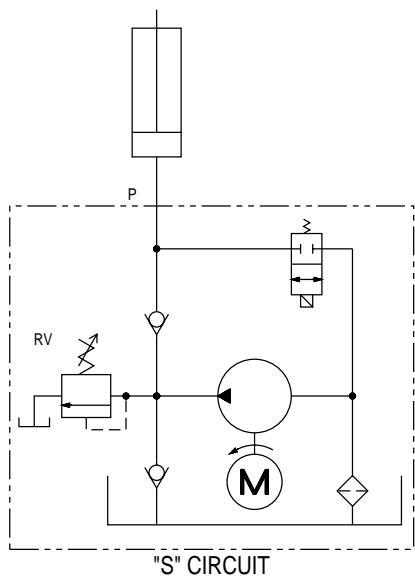
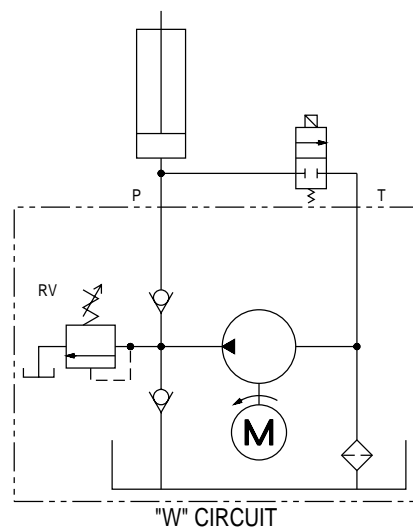
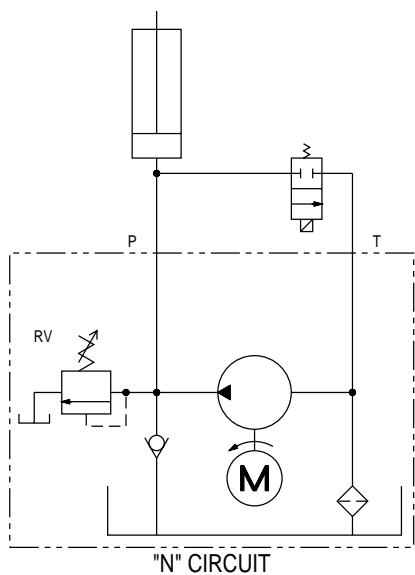
Features

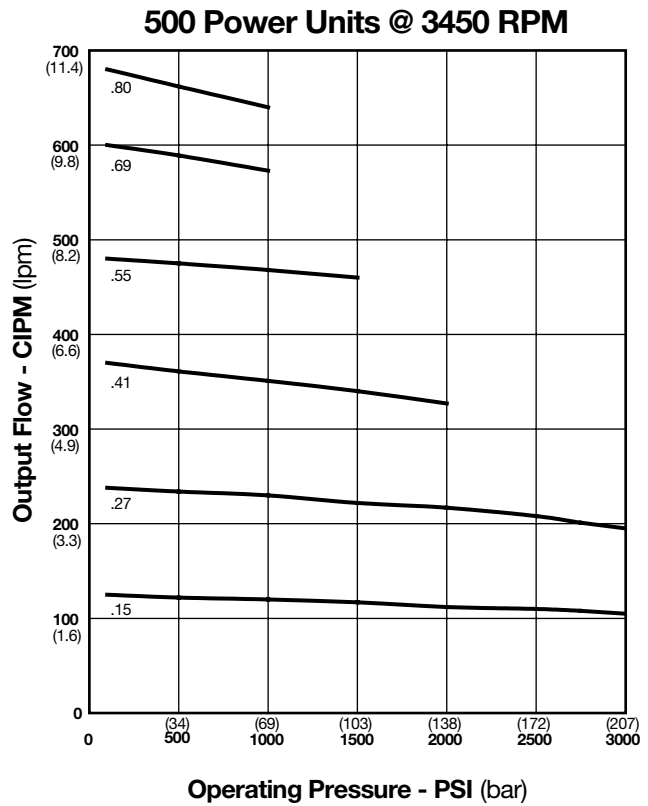
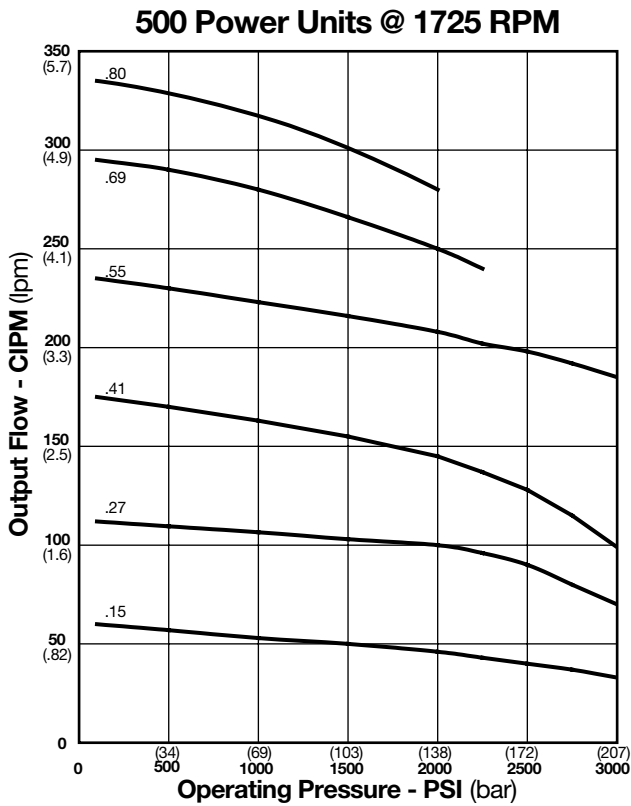
- Numerous motors up to 2 HP
- 6 pump sizes - 1/4 gpm to 3 gpm
- Externally adjustable relief valves
- Vertical or horizontal mounting
- Single direction or bi-rotational
- Integral locking check valves
- Reservoirs from 1/2 to 5 gallons
- 3,000 psi rating

Applications

- Boat lifts
- Boat davits
- Auto lifts
- Scissors lift tables
- Dock levelers
- Test fixtures
- Industrial oven doors
- Conveyor height adjusters





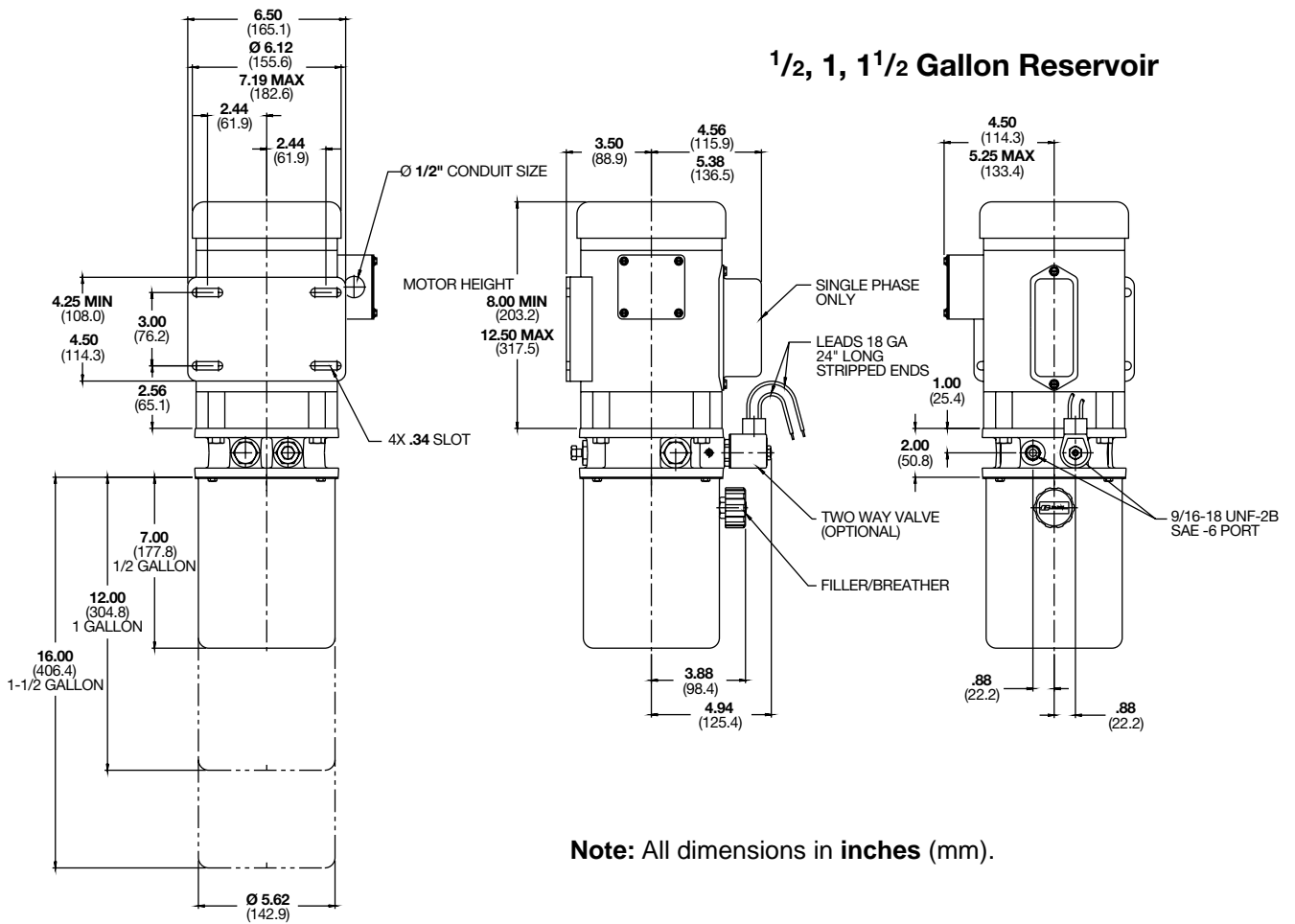


Motor Horsepower Recommendations at Flow/Pressure

Pump Size	Nominal GPM		Pressure (PSI)					
	@1725	@3450	500	1000	1500	2000	2500	3000
15	1/4		1/3 HP	1/3 HP	1/3 HP	1/3 HP	1/2 HP	1/2 HP
15		1/2	1/3 HP	1/3 HP	1/2 HP	3/4 HP	1 HP	1 HP
27	1/2		1/3 HP	1/3 HP	1/2 HP	3/4 HP	1 HP	1 HP
27		1	1/3 HP	3/4 HP	1 HP	1 1/2 HP	2 HP	2 HP
41	3/4		1/3 HP	1/2 HP	3/4 HP	1 HP	1 1/2 HP	1 1/2 HP
41		1 1/2	1/2 HP	1 HP	1 1/2 HP	2 HP		
55	1		1/3 HP	3/4 HP	1 HP	1 1/2 HP	2 HP	2 HP
55		2	3/4 HP	1 1/2 HP	2 HP			
69	1 1/4		1/2 HP	1 HP	1 1/2 HP	2 HP	2HP	
69		2 1/2	1 HP	2 HP				
80	1 1/2		1/2 HP	1 HP	1 1/2 HP	2 HP		
80		3	1 HP	2 HP				

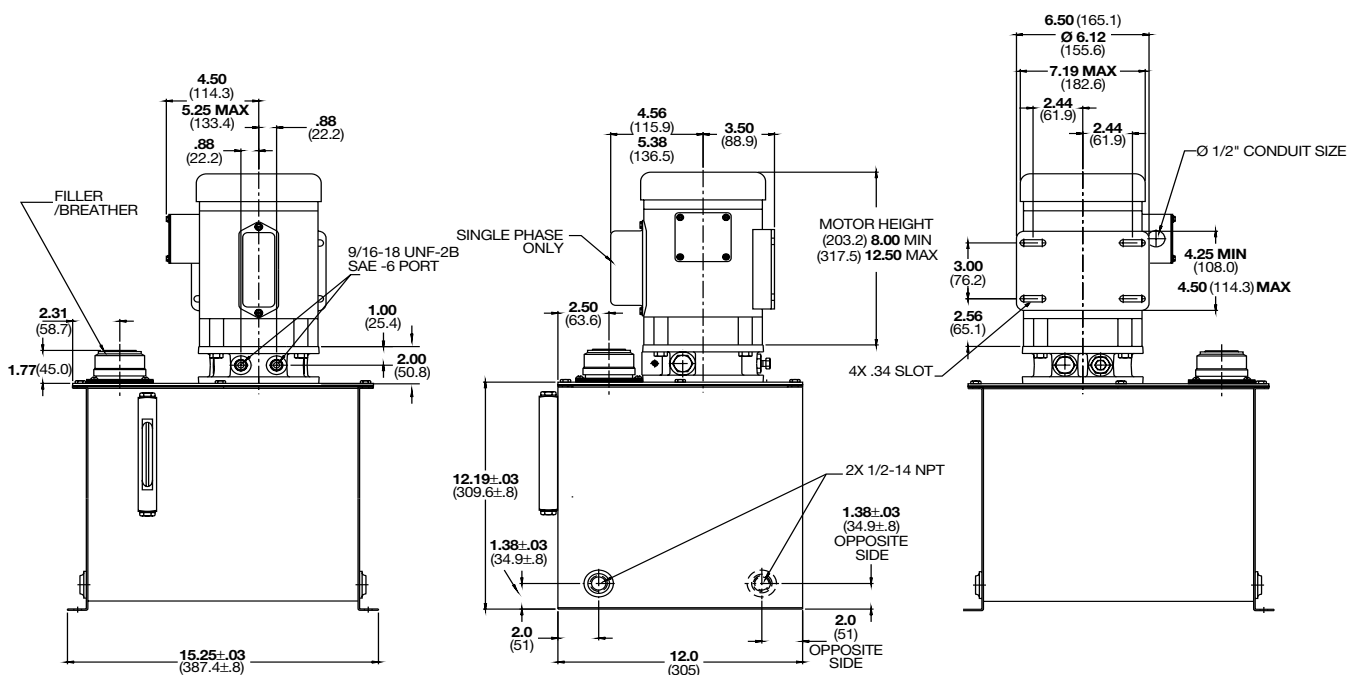
Note: Performance data is reference only.

Dimensions

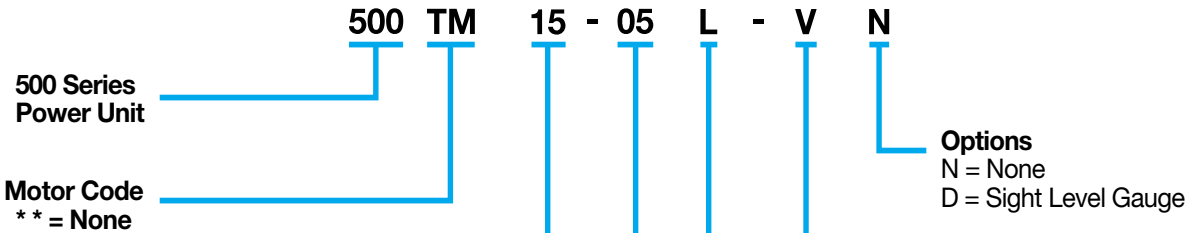


Note: All dimensions in inches (mm).

5 Gallon Reservoir



Standard Product Ordering Code



Motors Induction type - 60 cycle Dual voltage 115/230 1 Ø Dual voltage 230/460 3 Ø				
H.P.	RPM	Phase	Open Code	TEFC Code
1/3	1725	1	OA	TA
1/3	1725	3	OB	TB
1/3	3450	1	OG	TG
1/3	3450	3	OH	TH
1/2	1725	1	OC	TC
1/2	1725	3	OD	TD
1/2	3450	1	OM	TM
1/2	3450	3	OT	TT
3/4	1725	1	OE	TE
3/4	1725	3	OF	TF
3/4	3450	1	ON	TN
3/4	3450	3	OU	TU
1	1725	1	OJ	TJ
1	1725	3	OK	TK
1	3450	1	OP	TP
1	3450	3	OW	TW
1½	1725	1	OL	TL
1½	1725	3	OO	TO
1½	3450	1	OQ	TQ
1½	3450	3	OX	TX
2	1725	3	OR	TR
2	3450	1	OS	TS
2	3450	3	OY	TY

Pump Size
 15 = .038 CIPR
 27 = .070 CIPR
 41 = .104 CIPR
 55 = .139 CIPR
 69 = .173 CIPR
 80 = .201 CIPR

Reservoir Size
 05 = 1/2 Gallon
 10 = 1 Gallon
 15 = 1½ Gallon
 50 = 5 Gallon

Circuit Type
 L = Reversible Locking
 R = Reversible
 W = Single Direction with Check
 N = Single Direction
 S = "W" with Solenoid Release Valve
 (specify voltage and N.O. or N.C.)

Specify settings of relief valves. Reversible units have two R/V's and require two pressure settings. Consult factory if a special motor is required.

Hydraulic Fluid

ATF, OD18, or other clean hydraulic oil with a viscosity of 150 to 300 SUS at 100°F is acceptable. If another type of fluid is needed, please consult the factory.

Temperature Range

Normal operating range is +20°F to +140°F. Please review your application with the factory for uses below +20°F and over +140°F.

Note: Specifications subject to change without notice.