



POLO LAKES

DESIGNER APARTMENT HOMES



POLO LAKES
DESIGNER APARTMENT HOMES

561.791.3332 | 888.793.1400 | Fax 561.791.2628

1950 Polo Lake Boulevard | Wellington, Florida 33414
leasing@pololakesapthomes.com | www.pololakesapthomes.com



POLO LAKES • DESIGNER APARTMENT HOMES

1950 POLO LAKES BLVD IN WELLINGTON, FLORIDA

Southern Living with a Splash of CityLife

Experience A+ Rated Schools, Upscale Shopping and Equestrian Living just close enough to downtown!



A+ Rated Schools

Wellington, is one of the most successfully crafted communities in Palm Beach County. It has become well-known for its abundant parks, quality schools, and attractive neighborhoods.



Area Description

Discover the magic of living at one of South Florida's most prestigious premiere communities, Polo Lakes at Wellington. Nestled in amongst the serene lakes of Wellington, Polo Lakes offers you the chance to experience the lifestyle that the famous equestrian capital of south Florida delivers. We're also located conveniently to some of the best shopping and night life the city of Wellington has to offer.

Upscale Shopping

The Mall at Wellington Green is a super-regional shopping mall in Wellington, Florida. The mall features Macy's, Dillard's, and Nordstrom. As well as conveniently located movie theaters.



Our uniquely designed spacious apartment homes are updated with modern appointments that will keep you coming home happy and content. Our amenities invite you to relax by the huge custom designed refreshing pool if you'd like. Or if you'd like to take the steps to live a healthier lifestyle, the opportunity to exercise in our state of the art fitness center. Either way you'll find the amenities that you need to enjoy life to its fullest.

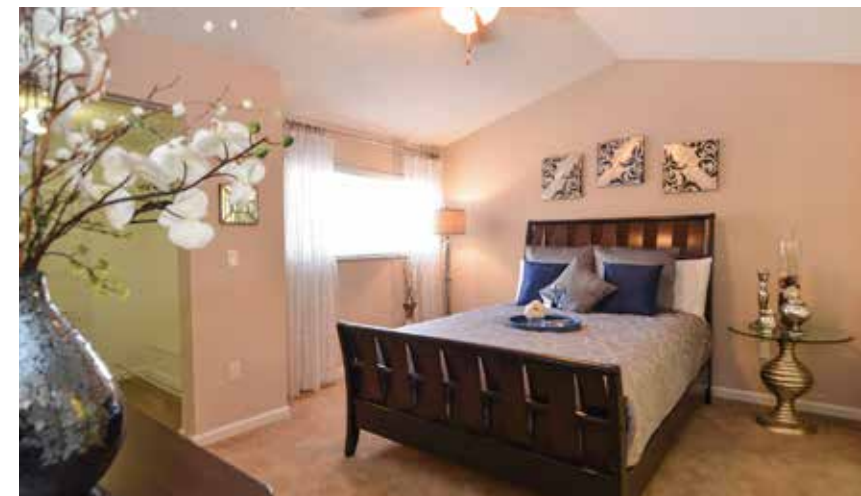
Equestrian Living

Wellington is recognized as the winter equestrian capital of the country. It is one of the top Polo destinations attracting the world's most accomplished players.



If you're a nature lover, you'll continuously be delighted seeing some of Florida's most beautiful wildlife right outside your window. With tranquil lakes located on our property we receive frequent visits throughout the day by Great Heron, Egrets and more. Kids and adults alike marvel at the many wonderful opportunities and moments they experience living at Polo Lakes in Wellington. Now is your chance to discover what they are and make coming home to these part of your day.

- Open & spacious
- Washer & dryer in unit
- Gourmet kitchens
- Roman tubs
- Vaulted ceilings
- Heated pool
- WiFi access on campus
- Screened balconies
- Business center/conference
- Attached 1 & 2 car garages
- BBQ & picnic areas
- Tot lot
- Pet friendly*
- Lakeside tennis court
- Basketball/roller hockey court



Amenities to keep you connected and layouts to Fall in Love with

We go past the ordinary to offer fresh, comfortable layouts, upscaled amenities and rich interaction with an area known for its equestrian way of life!



DESIGNER

FLOORPLANS

UPPERVILLE

1 BEDROOM

1 BATH

A/C Living Area: 865 sq. ft.
Balcony: 70 sq. ft.

Total Area*: 795 sq. ft.



MIDDLEBURG

2 BEDROOM

2 BATH

A/C Living Area: 1,044 sq. ft.
Balcony: 150 sq. ft.

Total Area*: 1,194 sq. ft.



LEESBURG

3 BEDROOM

2 BATH

1-CAR GARAGE

A/C Living Area: 1,554 sq. ft.
Patio: 130 sq. ft.

Total Area*: 1,684 sq. ft.



POTOMAC

2 BEDROOM

2 BATH

A/C Living Area: 1512 sq. ft.
Balcony: 171 sq. ft.

Total Area*: 1,684 sq. ft.





UPPERVILLE

1 BEDROOM

1 BATH

A/C Living Area:	865 sq. ft.
Balcony:	70 sq. ft.
Total Area*:	795 sq. ft.

MIDDLEBURG

2 BEDROOM

2 BATH

A/C Living Area:	1,044 sq. ft.
Balcony:	150 sq. ft.
Total Area*:	1,194 sq. ft.



LEESBURG

3 BEDROOM

2 BATH

1-CAR GARAGE

A/C Living Area:	1,554 sq. ft.
Patio:	130 sq. ft.
Total Area*:	1,684 sq. ft.



POTOMAC

2 BEDROOM

2 BATH

A/C Living Area:	1512 sq. ft.
Balcony:	171 sq. ft.
Total Area*:	1,684 sq. ft.





UPPERVILLE

1 BEDROOM

1 BATH

A/C Living Area: 865 sq. ft.

Balcony: 70 sq. ft.

Total Area*: 795 sq. ft.

MIDDLEBURG

2 BEDROOM

2 BATH

A/C Living Area: 1,044 sq. ft.

Balcony: 150 sq. ft.

Total Area*: 1,194 sq. ft.







561.791.3332 | 888.793.1400 | Fax 561.791.2628

1950 Polo Lake Boulevard | Wellington, Florida 33414
leasing@pololakesapthomes.com | www.pololakesapthomes.com