

Safety Instructions, Installation & Operator's Manual For

SNAPPER®

**#6-3156 TWIN BAG GRASS CATCHER KIT
FOR 33" YARD CRUISERS YZ145332BVE
SERIES 2 MODELS**



IMPORTANT!
THIS KIT NOT INTENDED FOR USE ON
YZ13331BE SERIES 1, OR ANY SERIES OF
HZ /HVS YARD CRUISERS

SNAPPER® McDonough, GA., 30253 U.S.A.

COPYRIGHT © 2000
SNAPPER INC.
ALL RIGHTS RESERVED

MANUAL No. 7-3447 (I.R. 02/29/00)

IMPORTANT SAFETY INSTRUCTIONS



WARNING



All safety instructions and operating instructions in the manuals provided with the Snapper Yard Cruiser and this Grass Catcher attachment must be followed. Read, understand, and follow ALL instructions and warnings in the Operator's Manual provided with the machine, with this attachment, and ALL instructions and warnings on the machine, engine and attachment. Failure to comply with ALL instructions and warnings can result in damage, serious injury or death to the operator or other persons.

- 1) **DO NOT** allow children or others in the yard when the machine is operated (even with the blades off).
- 2) **DO NOT** allow children or others to ride on the machine or attachment (even with the blades off).
- 3) **DO NOT** allow children to operate the machine.
- 4) **DO NOT** operate blades in reverse. **STOP** blades. **LOOK** and **SEE** behind and down for children, pets, and hazards before and while backing.
- 5) **FRONT WEIGHT** must be installed before operating machine with grass catcher.
- 6) **DO NOT** operate machine on slopes exceeding 10 degrees (18% grade) when equipped with grass catcher.
- 7) Exercise **EXTREME CAUTION** on all slopes. Turn blades off when traveling uphill. Use a slow speed and avoid sudden or sharp turns.
- 8) **DO NOT** operate machine across face of slopes. Operate up and down. Practice on slopes with blades off.
- 9) **AVOID** uphill starts. If machine stops going up hill or tires lose traction, turn blades **OFF** and back slowly down the slope.
- 10) **GRASS CATCHER COMPONENTS** are subject to deterioration during normal use. Inspect all components frequently for signs of wear or deterioration. Replace worn or damaged components immediately.
- 11) **DO NOT** leave machine with engine running. **STOP** engine, **STOP** blades, **SET** brake, and **REMOVE** key before leaving operator's position for any reason.
- 12) **DO NOT** attempt to remove or unclog the grass catcher with engine or blades running. Stop engine and blades and make sure all rotating components have come to a complete stop before removing any catcher component or attempting to unclog catcher or deck.
- 13) **DO NOT** operate machine without entire Grass Catcher or Guards in place.
- 14) **DO NOT** operate machine with grass catcher cover open. Cover must be closed and latched securely at all times unless dumping.

TABLE OF CONTENTS

IMPORTANT SAFETY INSTRUCTIONS	2
TABLE OF CONTENTS.....	3
SECTION 1 - ASSEMBLY INSTRUCTIONS	4-8
Introduction.....	4
Bumper Bracket , Catcher Support Bracket & Heat Shield Installation.....	4
Heat Shield Installation.....	4
Front Weight Plate Installation.....	5
Deck Adapter Installation	5-6
Cover/Frame Installation	6
Grass Screen Installation	6
Cover Inlet & Baffle Installation	7
Grass Bag Installation	7
Grass Tube Installation.....	7-8
SECTION 2 – OPERATION & MAINTENANCE	9-12
Introduction.....	9
Grass Catcher Operation.....	9
Emptying Grass Catcher	9
If The Grass Catcher Becomes Clogged.....	9
Grass Catcher Maintenance	9
Before Each Use.....	9
Twin Bag Assembly Components	10-12

SECTION 1 – ASSEMBLY INSTRUCTIONS

INTRODUCTION

The #6-3156 Twin Bag Grass Catcher Kit fits Snapper Yard Cruiser YZ145332BVE, Series 2 models. This Kit is not intended for use on Series 1 YZ models or any Series of HZ and HZS Yard Cruisers. Use the following instructions to assemble the grass catcher components and prepare your machine for collecting grass clippings and leaves. Follow and complete each step carefully.

WARNING

DO NOT attempt any adjustments, maintenance or service with the engine running. **STOP** engine. **STOP** blade. Engage parking brake. Remove key. Remove spark plug wire from spark plug and secure wire away from spark plug. Engine and components are **HOT**. Avoid serious burns, allow all parts to cool before working on machine.

STEP 1 BUMPER BRACKET, CATCHER SUPPORT BRACKET AND HEAT SHIELD INSTALLATION

- A. Remove two right bumper bolts and loosen top right frame bolt. See Figure 1.1.
- B. Slide slot in bumper bracket under head of right frame bolt. Push bracket firmly against rear bumper and tighten bolt.
- C. Using two right bumper bolts removed in Step A, attach catcher support bracket and rear heat shield to the bumper. Tighten bolts securely. See Figure 1.1.

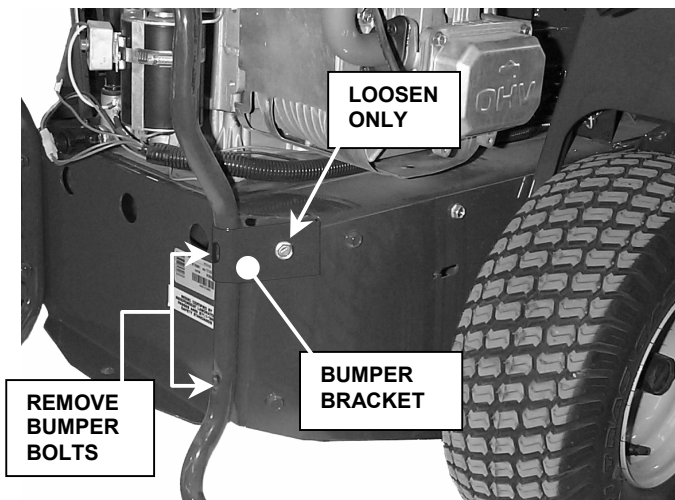


FIGURE 1.1

- D. Using two right bumper bolts removed in Step A, attach catcher support bracket and rear heat shield to the bumper. Tighten bolts securely. See Figure 1.2.

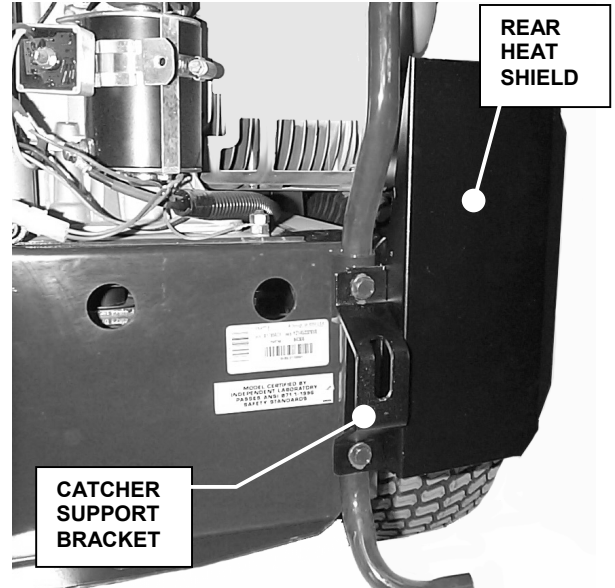


FIGURE 1.2

STEP 2 MUFFLER HEAT SHIELD INSTALLATION

IMPORTANT! To avoid damage to grass catcher components, the muffler heat shield must be installed before operating machine.

- A. Loosen bolt on top of muffler heat shield. See Figure 1.3.
- B. Place muffler heat shield under existing heat shield on muffler and slide slot forward onto bolt.
- C. Make sure that the slot is completely forward and tighten bolt securely.

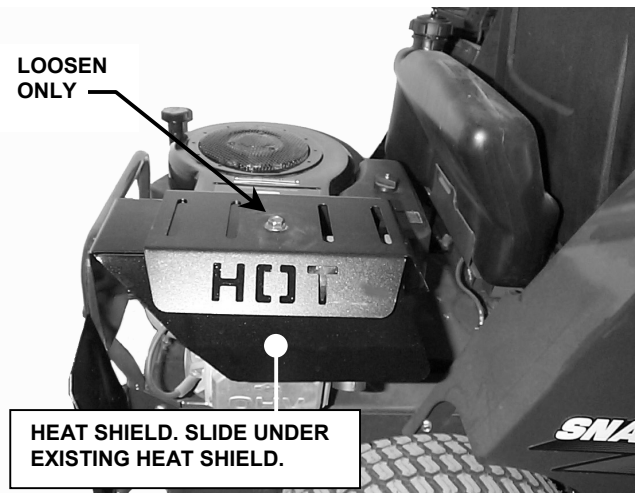


FIGURE 1.3

SECTION 1 – ASSEMBLY INSTRUCTIONS

WARNING
Front Weight Plates must be installed before operating machine with grass catcher.

STEP 3

FRONT WEIGHT PLATE INSTALLATION

- Remove (4) knobs attaching floor pan to front frame. Remove floor pan.
- Attach (4) weight plates to front frame using (1) 3/8-16 x 2" hex bolt, (2) 3/8" flat washers, (1) 3/8" split lock washer and (1) 3/8-16 hex nut. Place four weight plates on front bumper and align holes. Insert bolt with flat washer from top. Secure weights in place with flat washer, split lock washer and hex nut. Tighten securely. See Figure 1.4.
- Do not install the floor pan at this time

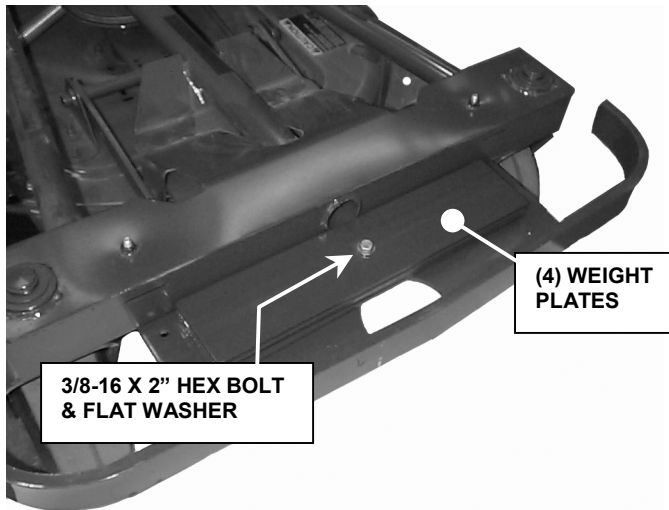


FIGURE 1.4

WARNING
DO NOT operate machine without entire grass catcher or guards in place.

STEP 4

DECK ADAPTER INSTALLATION

To install the deck adapter on 33" YZ models, the discharge deflector will have to be removed. Be careful to save the deflector and all hardware removed for future use when not bagging.

- Remove wing nuts, flat washers and bolts securing deflector to side of deck. Save hardware. See Figure 1.5.
- Remove hinge nut, spring, and hinge from deflector. Remove deflector. See Figure 1.5.

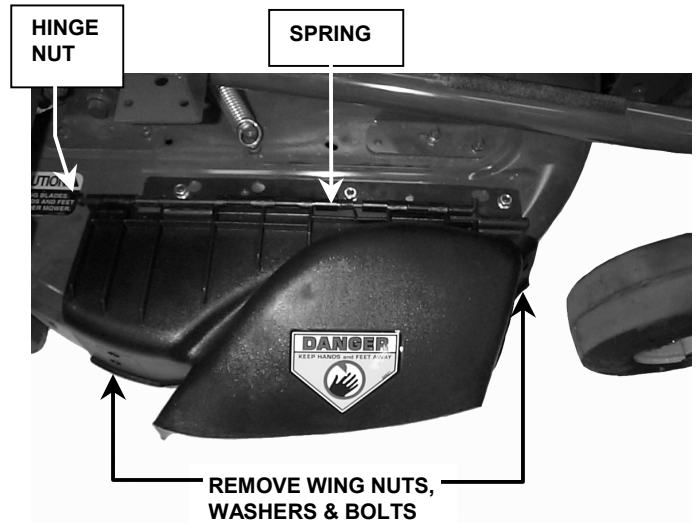


FIGURE 1.5

- Hold the adapter in front of the deck. Align the adapter lugs with the lug retainers in the hinge. Push or lightly tap front of adapter towards the rear until tight against deck. See Figure 1.6.
- Install one of the previously removed bolts into the hole in the center of the discharge opening and through the hole in the adapter. Secure the adapter to the deck with a flat washer and wing nut. See Figure 1.6.

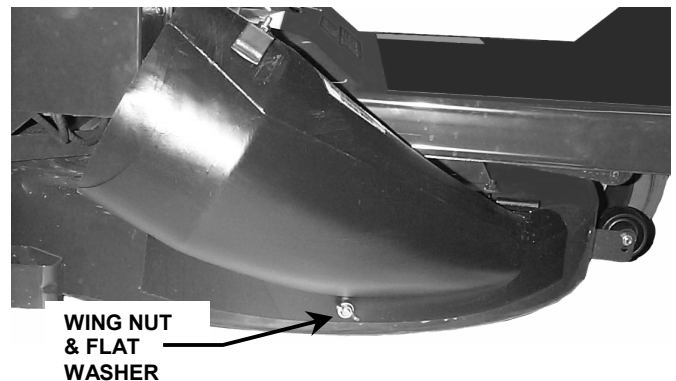


FIGURE 1.6

SECTION 1 – ASSEMBLY INSTRUCTIONS

- E. Attach tube latch to deck adapter. Insert one 1/4-20 x 3/4" Carriage bolt from inside through lower hole in adapter. Place Tube Latch over bolt, followed by 1/4" Internal Tooth lock washer and secure with 1/4-20 hex nut. Align Tube Latch as shown and tighten securely. See Figure 1.7.
- F. Install front floor pan. Tighten (4) knobs securely.

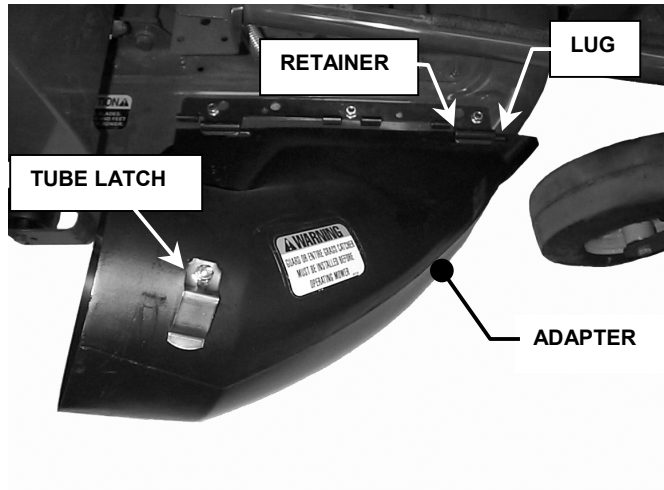


FIGURE 1.7

STEP 5 COVER/ FRAME ASSEMBLY INSTALLATION

- A. Position cover/frame assembly over rear bumper and secure in place using (2) 5/16" diameter clevis pins and (2) hairpins. See Figure 1.8.



FIGURE 1.8

- B. Insert center brace tube into spring latch and insert end of spring into hole in tube. See Figure 1.9.

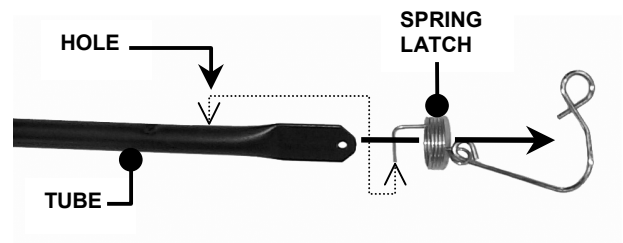


FIGURE 1.9

- C. Place slotted end of brace tube into catcher support bracket. Align holes in catcher frame and tube. Insert 5/16" diameter clevis pin and secure with hairpin. See Figure 1.10.

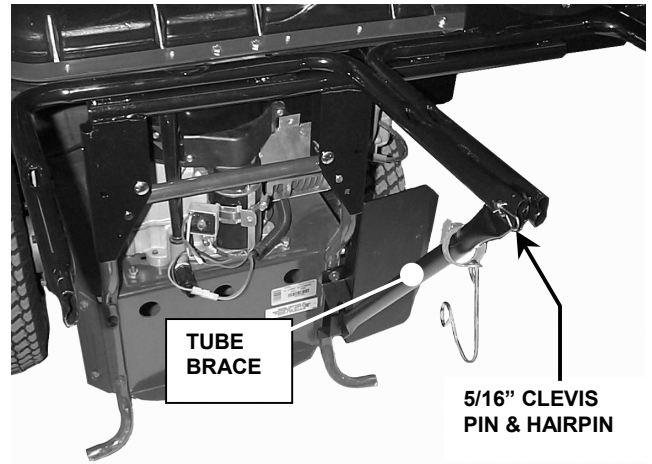


FIGURE 1.10

STEP 6 GRASS SCREEN INSTALLATION

- A. The grass screen fits into a groove molded into the right side of the top cover and is held in place with the exposed end of the frame rod. Slide the screen and frame into the groove with the exposed rod end towards the rear. Place exposed rod end into hole in cover. See Figure 1.11.

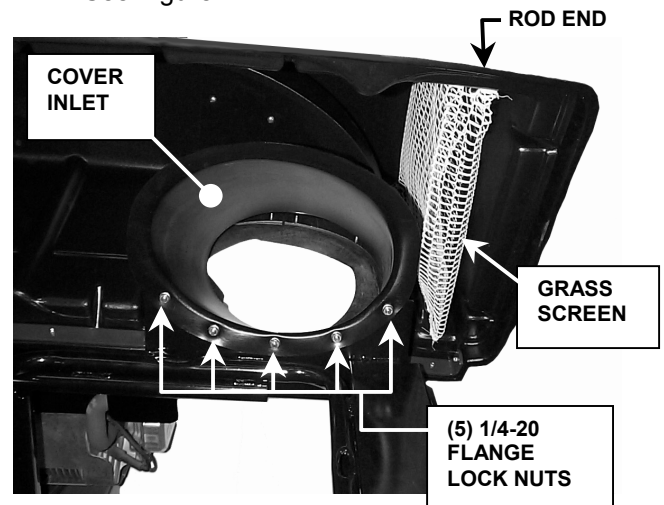


FIGURE 1.11

SECTION 1 – ASSEMBLY INSTRUCTIONS

STEP 7

COVER INLET AND BAFFLE INSTALLATION

- A. Attach cover inlet to plate on frame using (5) 1/4-20 x 1/2" carriage bolts and (5) 1/4-20 flange lock nuts. Insert head of bolts one at a time through the plate in the frame and align with holes in the inlet. Loosely secure with flange lock nuts. When all (5) have been installed, tighten each securely. See Figure 1.11.
- B. Align (4) holes in baffle with the (4) holes in the top cover. Insert (4) 1/4-20 x 3/4" round head machine screws from inside cover. Place (1) 1/4" flat washer over each bolt and secure each with a 1/4-20 hex nut. See Figure 1.12.

BAFFLE
(ATTACH INSIDE COVER)

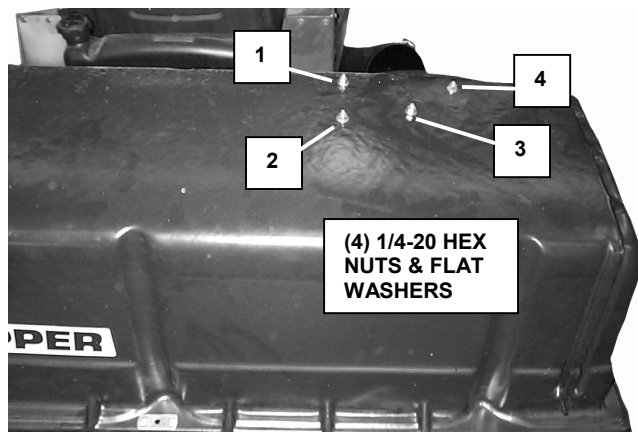


FIGURE 1.12

STEP 8

GRASS BAG INSTALLATION

IMPORTANT! Grass bags must be installed correctly to prevent excess blowout on engine and towards operator. Do Not operate machine without both bags in place and the cover securely latched.

- A. Position bag so that the three locating lugs in the bag frame line up with the three locating slots in the catcher frame. See Figure 1.13.
- B. Repeat with second bag.
- C. Close cover and hook spring latch into latch plate on cover. Check to make sure that the cover is full closed and latched securely.

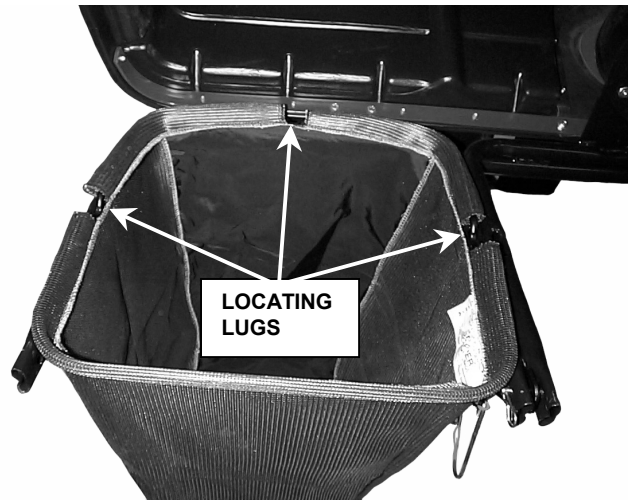


FIGURE 1.13

STEP 9

GRASS TUBE INSTALLATION

- A. Attach Tube Handle and Handle Base to Tube before installing Tube to catcher. Insert (2) 1/4-20 x 3/4" Carriage bolts through Handle Base and holes in Tube as shown. See Figure 1.13. Place Tube Handle over bolts followed by 1/4" Internal Tooth lock washers and secure with (2) 1/4-20 hex nuts. Tighten securely. See Figure 1.14.

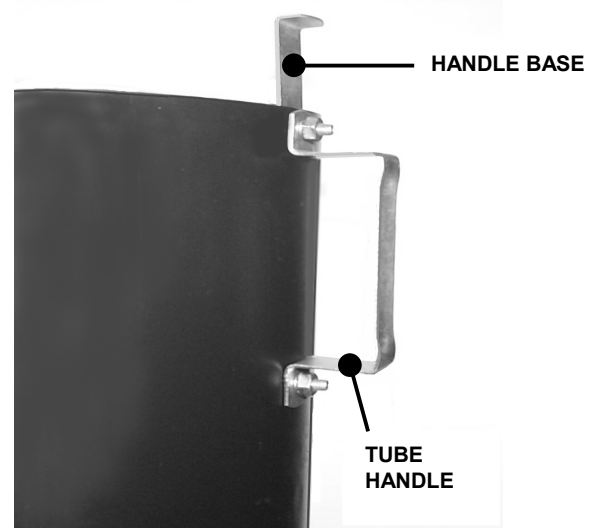


FIGURE 1.14

- B. Place deck in lowest cutting height setting.
- C. Slide upper end of grass tube (end without handle) into inlet of cover assembly.

SECTION 1 – ASSEMBLY INSTRUCTIONS

- D. Slide lower end of Grass Tube over adapter and rotate towards mower to secure Handle Base under Latch. See Figure 1.15.
- E. Adjust deck to desired cutting height.



FIGURE 1.15

SECTION 2 – OPERATION & MAINTENANCE

INTRODUCTION



Follow operation and maintenance instructions in the Operator's Manual provided with the Snapper Yard Cruiser Riding Mower.

2.1 GRASS CATCHER OPERATION

- A. Select desired cutting height. Choose a setting that will not attempt to cut off too much at once, overloading the machine.
- B. After starting engine and allowing a brief warm up period, move engine speed control to highest setting.
- C. Drive machine to cutting area. Engage blades.
- D. Select a slow forward ground speed until familiar with conditions. Do not select a speed that is too fast, causing the machine to become overloaded.
- E. The weight of the grass catcher and contents will affect the stability and handling of the machine. Avoid sudden starts and sharp turns. Reduce speed on slopes, and DO NOT operate machine on slopes exceeding 10 degrees (18% grade). Operate machine up and down slopes. DO NOT operate machine across the face of slopes. Turn blades off when traveling up slope.
- F. Empty grass catcher often to minimize effect on stability and handling. Over filling the catcher will reduce performance and cause clogging of the tube, adapter and deck.
- G. Do not operate the machine with the Grass Catcher open. The entire Grass Catcher must be installed, the catcher closed and latched properly before operating.

2.2 EMPTYING GRASS CATCHER

- A. Empty Grass Catcher often to avoid overfilling. Overfilling reduces performance and causes clogging of tube, adapter and deck.
- B. Turn blades off. Drive machine to location the clippings are to be dumped. DO NOT operate blades in reverse. If you must back machine to dump clippings in desired location, LOOK and SEE behind and down for children, pets and hazards before and while backing.
- C. Bring joystick motion control to neutral. Engage park brake. Stop engine. Remove key.
- D. Unlatch and open catcher cover. Grasp bag frame and lift out. With one hand on the bag frame, grab handhold on bottom of bag and tip bag.
- E. After dumping, to maintain peak performance, check the catcher screen located on the inside of the Catch Cover to make sure it is clean and free of any build up. Clean as required with brush or broom.
- F. Install grass catcher bags, making sure all three locating lugs in bag frame align with slots in catcher frame.
- G. Close cover and latch securely.
- H. Re-start engine and drive machine to cutting area. Set engine speed to highest setting, engage blades and resume operation.

	WARNING	
<p>DO NOT attempt to remove any clogs from deck, adapter, or tube with engine or blade running. STOP engine. STOP blade. Engage parking brake. Remove key. Make sure blade and all rotating components have come to a complete stop before removing or unclogging any catcher component.</p>		

2.3 IF THE GRASS CATCHER BECOMES CLOGGED

The grass catcher may become plugged if the conditions are too severe, the catcher is overfilled, or the machine is used improperly. If plugging does occur, attempt the following:

1. Empty catcher more often.
2. Clean screen on inside of catcher cover.
3. Ground speed too fast – cut at slower speed.
4. Removing too much grass – raise cutting height, cut partial width, and cut lawn more frequently.
5. Grass is too wet from rain or dew – allow grass to dry.
6. Blades are dull or worn – inspect blades and replace as necessary. Use only genuine SNAPPER replacement blades.
7. Mower equipped with incorrect blade. Catcher operation requires high lift blade. Contact your local SNAPPER dealer for assistance in choosing the correct blade for your application.
8. Deck, adapter, or tube has clipping build up – clean all clippings from all internal surfaces.

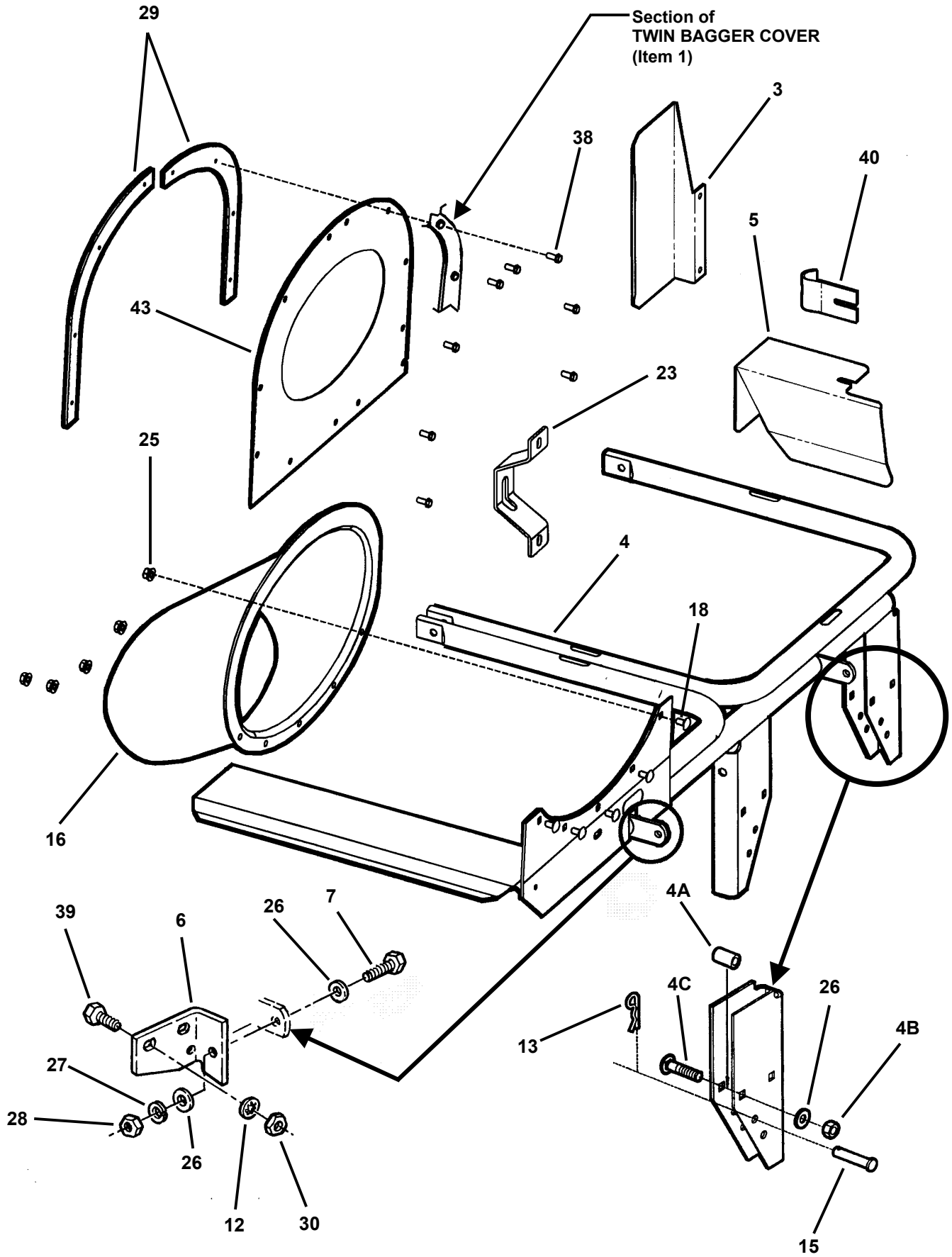
2.4 GRASS CATCHER MAINTENANCE

Grass Catcher components are subject to wear and deterioration during normal usage. Inspect all components frequently for signs of wear and deterioration. Replace worn or damaged components immediately.

BEFORE EACH USE

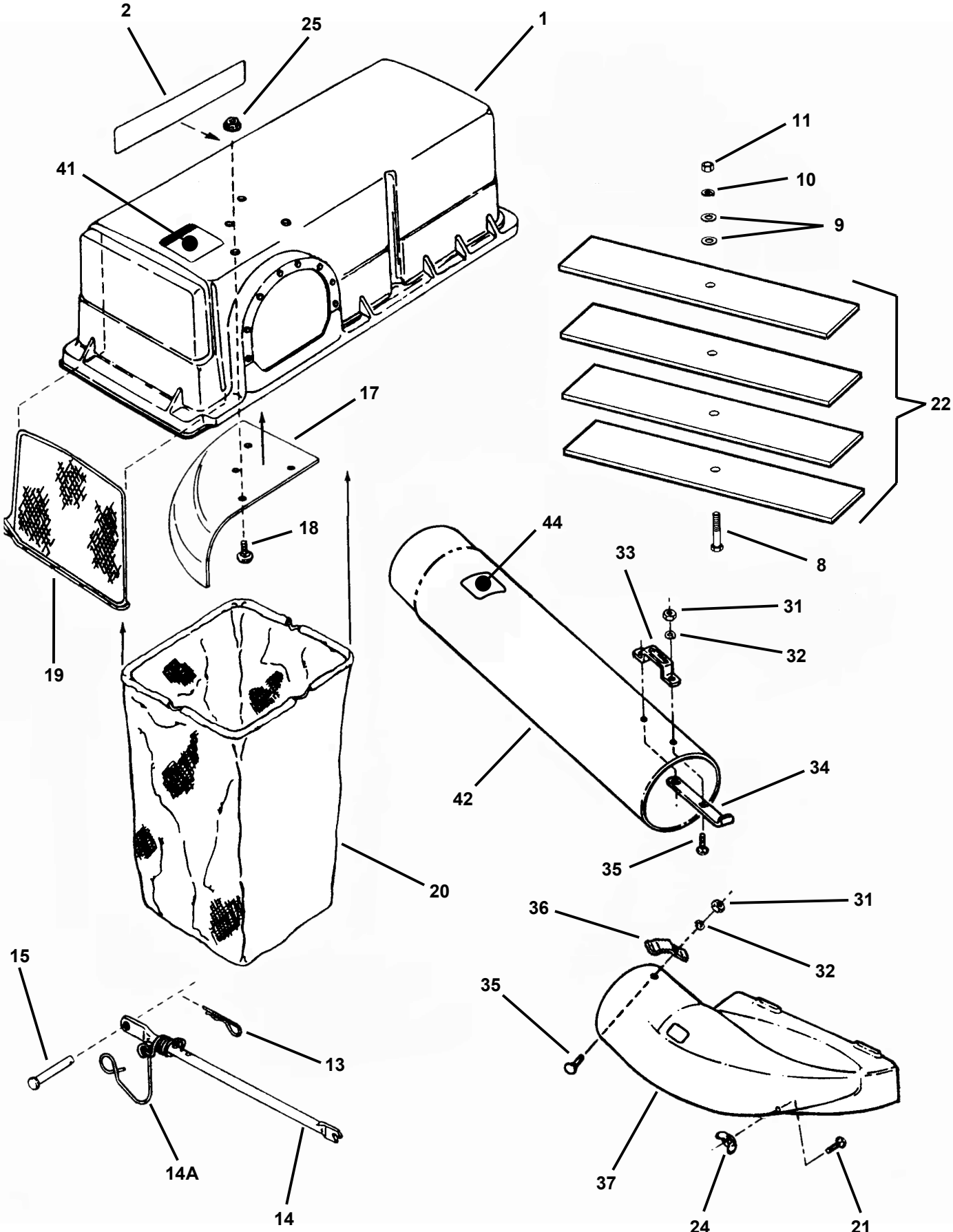
- A. Inspect all Catcher components. Replace all worn or damaged parts.
- B. Clean grass build up from deck, adapter, grass tube, catcher cover and screen. To maintain peak performance make sure screen is clean at each dumping.
- C. Inspect blade for wear or damage. Replace as needed.
- D. Perform pre-start check list and maintenance as instructed in the SNAPPER Yard Cruiser Operator's Manual and Engine Owner's Manual included with the machine.

TWIN BAG ASSEMBLY COMPONENTS



TWIN BAG ASSEMBLY COMPONENTS

(Continued)



TWIN BAG GRASS CATCHER PARTS LIST

ITEM	PART NO.	DESCRIPTION
1*	5-9710	COVER ASS'Y (includes items 29, 38 & 43)
2	1-8593	DECAL, Snapper (11-1/2" Long)
3	7-1677	MUFFLER GUARD
4	5-4645	FRAME WELDMENT
4A	2-3797	PAD, Bumper Mount (2)
4B	9-0184	NUT, 5/16-18 Hex Center Lock (2)
4C	9-0577	BOLT, 5/16-18 x 1-1/2" Carriage, Grade 5 (2)
5	5-8910	HEAT SHIELD (see Figure 1.3 on page 4)
6	3-8087	HINGE, Top (2)
7	9-0238	SCREW, 5/16-24 x 1" Hex Head Cap, Grade 5 (2)
8	9-0588	SCREW, 3/8-16 x 2" Hex Head Cap, Grade 5
9	9-0122	WASHER, 3/8" Flat (2)
10	9-0118	WASHER, 3/8" Split Lock
11	9-0130	NUT, 3/8-16 Hex
12	9-0053	WASHER, 1/4" Internal Tooth Lock (4)
13	9-1503	COTTER, Hairpin (3)
14	3-6073	BRACE
14A	5-1407	ASSEMBLY, Spring and Hook
15	2-9841	PIN, Clevis (3)
16	3-5706	INLET
17	1-9725	SECTOR
18	9-1604	BOLT, 1/4-20 x 1/2" Carriage, Grade 5 (5)
19	5-7652	SCREEN ASS'Y (includes indented items)
-	1-9732	FRAME
-	1-9731	SCREEN
20	5-1930	BAG ASS'Y (includes indented items) (2)
-	1-9250	BAG, Grass Catcher (2)
-	1-9965	ROD, Bag Support (2)
-	1-4456	CONNECTOR, Rod (2)
21	9-1303	BOLT, 5/16-18 x 1" Carriage, Grade 5
22	5-8909	BALLAST (4) (see Figure 1.4 on Page 5)
23	7-2239	BRACE, Twin Bag Catcher (see Figure 1.2 on Page 4)
24	9-1537	LOCKNUT, 5/16-18 Wing
25	9-1545	NUT, 1/4-20 Hex Flange Top Lock (5)
26	9-0188	WASHER, 5/16" Flat (6)
27	9-1315	WASHER, 5/16" Split Lock (2)
28	9-1606	NUT, 5/16-24 Hex Center Lock (2)
29	3-8276	CLAMP (2)
30	9-1605	NUT, 1/4-28 Hex, Grade 5 or B (4)
31	9-1576	NUT, 1/4-20 Hex (7)
32	9-1314	WASHER, 1/4" Internal Tooth Lock (3)
33	3-7745	HANDLE, Tube
34	3-1952	BASE, Tube Handle
35	9-1530	BOLT, 1/4-20 X 3/4" Carriage Grade 5 (3)
36	3-1951	LATCH, Chute Tube
37	5-7809	ADAPTER, Bag (includes 4-6720 Decal)
38*	9-0853	SCREW, #10-24 x 1/2" Hex Washer Self-Tap (8)
39	9-1611	SCREW, 1/4-28 x 3/4" Hex Head Cap (4)
40	4-2716	BRACKET, Bumper Reinforcement
41*	4-6627	DECAL, Grass Catcher
42	4-6614	TUBE, Grass (33" Deck)
43	1-9794	SEAL
44	1-1910	DECAL, Caution

*NOTE: The Bagger Hood Assembly (P/N 5-7885) includes items 1, 38 and 41.

Safety Instructions, Installation & Operator's Manual For

SNAPPER®

**#6-3156 TWIN BAG GRASS CATCHER KIT
FOR 33" YARD CRUISERS YZ145332BVE
SERIES 2 MODELS**

SNAPPER® McDonough, GA., 30253 U.S.A.