

Obed Wild & Scenic River

Official Visitor Guide

National Park Service
U.S. Department of the Interior

Spring/Summer Edition 2019



"Spring and summer at the Obed," a phrase that conjures up images of warmer weather, colorful wildflowers in bloom, songbirds chirping, and visitors getting outside to enjoy the great outdoors. Obed Wild and Scenic River is the perfect place to experience the sights and sounds of spring and summer, and a variety of exciting and challenging outdoor activities.

This guide is designed to help you choose the best activity for the time that you have available to spend exploring the Obed. And the visitor center is a great place to start your adventure. There you can speak to a park ranger for information on upcoming park events and activities, and how to make the most of your visit. There is also an informative 15-minute video to enjoy. This award-winning video is a quick and enjoyable way to learn why Obed is so special. Be sure to stamp your NPS passport book while you're there.

An excellent way to learn more about the park while exploring the outdoors is to attend a ranger-led program. Programs are free, and offered year-round. Program topics include: guided hikes, rock-climbing, night sky, birding, and more. For more information about upcoming ranger-led programs, call (423) 346-6294.

Whether you are interested in whitewater paddling, hiking, fishing, picnicking, rock climbing, bird-watching, or sitting on a rock and enjoying a good book, Obed is an excellent place to immerse yourself in the outdoors.

Thank you for spending a part of your spring and summer at Obed Wild and Scenic River.



Above -- Climbing routes exist for all abilities;
Below image -- Spring is an excellent time to enjoy wildflowers

Welcome to Obed Wild & Scenic River

Although spring officially begins March 20, signs of its arrival can be seen, and felt much sooner, with the sounds of frogs croaking, trees budding, and warmer weather beckoning. During this exciting time of seasonal change, many visitors eagerly come to the park to experience these familiar, and missed, sights and sounds.

As park staff prepare for the year ahead, the magic of spring also requires visitors to plan ahead and be prepared. Water levels at Obed may change quickly from one day to the next, trail conditions may be impacted by weather, as well as other unforeseen events.

Regardless of what your interest is, the best place to begin your visit to the park is at the visitor center. Our knowledgeable staff is available to answer your questions, provide park updates, and offer recommendations on how to best spend your available time.

Whether it's your first time experiencing the Obed, or your 20th, I hope you come prepared and have a safe visit. And may your experience exceed your expectations.

Niki Stephanie Nicholas

Niki Stephanie Nicholas
Superintendent

FIND YOUR **PARK**
FINDYOURPARK.COM

4 Park Map

This map shows how to get to the most popular points of interest in our park.

6 Walks & Talks Schedule

Find out when the next ranger program will take place and join us.

7 Hey Ranger!

See what the commonly asked questions are for the park.



National Park Service
U.S. Department of the Interior

Obed Wild & Scenic River

Mailing Address
PO Box 429
Wartburg, TN 37887

E-mail
obri_information@nps.gov

Park Headquarters
423-346-6294



STAY CONNECTED WITH US

Follow us on Twitter
@ObedNPS

Like us on Facebook as
ObedNPS

Follow us on Instagram as
ObedNPS

Subscribe to our YouTube channel at
Obed Wild & Scenic River

Visit our website at
www.nps.gov/obed



WIFI is available at the
Visitor Center.

Events Calendar

All events are Eastern Time. All interpretive programs are subject to change.
Contact Obed Wild & Scenic River Visitor Center at (423) 346-6294 for program details.

ANNUAL VOLUNTEER APPRECIATION POTLUCK LUNCH

Join us on Saturday, April 20, 2019, for this annual event. Volunteers, scouting groups, and whitewater paddling groups team up to clean up all access to the park. Following the cleanup, a picnic lunch at the Obed Visitor Center is provided to all volunteers.

EIGHTH ANNUAL PHOTO CONTEST

Photographers are invited to submit entries for the eighth annual photography exhibit at Obed Wild and Scenic River Visitor Center. The NPS is looking for striking digital images in one of five categories: action/adventure, artistic, flora/fauna, landscapes, and youth (17 and under). Photos must be submitted by July 26, 2019. Gala award celebration will occur on August 23, 2019. Submission information and rules and regulations can be found at: <http://www.nps.gov/obed/learn/photosmultimedia/obed-photo-contest.htm>.

HEALTHY HIKES

Obed Healthy Hikes provide the public with ranger-led hikes that allow park visitors the opportunity to further discover our national parks. Many of the hike have themes that are tailored to the season, such as wildflowers, birds, trees, etc. Check with the Obed Visitor Center for upcoming dates and times.

COFFEE AND CLIMB WITH A RANGER PROGRAM

On the first Saturday of each month, this program introduces rock climbing to individuals who have always wanted to try the activity but who did not know where to begin. All necessary gear is provided. Would-be rock climbers of all ages are encouraged to attend. These programs will be held regardless of weather conditions. Attend one program or both. No reservations are necessary for these free events.

ADOPT-A-CRAG

This annual event will occur on August 31, 2019, this year. Climbers and any interested volunteers help to pick up trash and do trail maintenance work around the park. Climbers and any interested volunteers help to pick up trash, perform trail maintenance work around the park, and treat hemlock trees to protect them from the Woolly Adelgid.

SEASONAL OWL PROWL

On selected Friday evenings every month from April through August, join a park ranger as we try to locate, listen to, and view the Eastern screech owl and the barred owl in their natural habitat. This night-time venture begins at the Lilly Bluff Overlook parking lot, located just off of Ridge Road in Morgan County. Dates and times vary. Please check our park's Facebook page (ObedNPS) for more information, and for specific dates and times.

NIGHT SKIES OVER THE OBED

The Obed is one of the newest Dark Sky Parks designated by the International Dark Sky Association. Come join us in 2018 at our Night Sky programs, which feature the full stellar display of our exceptional dark sky, through the lens of our 12-inch Dobsonian Reflector Telescope. Selected dates of the night skies programs will be posted on the Obed's Facebook page (ObedNPS).

TRAIL RUNS AT THE OBED

If you like to run with others, and if you enjoy single track trail running in a woodland setting, then our trail runs are for you! The trail runs are a challenging alternative to our healthy hikes. Selected dates of the Trail Runs will be posted on the Obed's Facebook page (ObedNPS).

Become a Junior Ranger

Obed WSR has a Junior Ranger book and a cloth patch for you to earn for your jacket or book bag. Kids of all ages are invited to use this book to explore Obed with Obediah, the Owl. Many activities will help you learn about animals, plants, rocks, and rivers.



Become a Volunteer

For information on how you can become a National Park Service volunteer, contact Volunteer Coordinator, at (423) 346-6294, or email us at: obri_information@nps.gov. Visit us online at <http://www.nps.gov/obed/getinvolved/workwithus.htm> to see all of the wonderful opportunities that are available.



Obed WSR User Fees

CAMPING FEES

ROCK CREEK CAMPGROUND

ALL SITES 11 SITES

\$10—NIGHT (8 PERSON MAX.)*

Make reservations at recreation.gov
or by calling 1-877-444-6777



PERMITS

HOG PERMITS \$5*/PERSON

PASSES

INTERAGENCY ANNUAL SENIOR PASS \$20

INTERAGENCY LIFETIME SENIOR PASS \$80 ONE TIME FEE

INTERAGENCY ACCESS PASS FREE WITH PROOF OF DISABILITY

INTERAGENCY PARK PASS \$80

INTERAGENCY MILITARY PASS FREE WITH PROOF OF ACTIVE
MILITARY DUTY

GET YOUR INTERAGENCY PASS ONLINE AT
store.usgs.gov/pass/index.html, or at one of our visitor centers.

Attention All Fourth Graders!

If you are 10 years old or in fourth grade, you can participate in a fun online activity and receive a voucher for a free 4th Grade Annual Pass. Print out the voucher and take it with you and your family to a national park, where you can serve as an ambassador and introduce your family to the National Park System. This program, called Every Kid in a Park, can be found online at: <https://www.everykidinapark.gov/>. National parks and other federal lands and waters all across America are excited to share their heritage with young people.



Pets

Pets are allowed within the park. However, for the safety of your pet and park wildlife, all pets must be kept on a leash (no longer than six feet) at all times. Be sure to clean up after your pet.

Before coming to the park make sure your pet is up to date on all vaccinations, including rabies. Pets should have identification and rabies tags on their collars. Make sure you check for ticks on you and your pet after visiting the park.



Backcountry Camping Permits

Anyone planning to camp overnight in the backcountry must obtain a free backcountry permit. A permit can be obtained at the Obed Visitor Center or you may download the form online by scanning the QR code here:
(<http://www.nps.gov/obed/planyourvisit/upload/OBRI-Backcountry-Use-Permit.pdf>).



VISITOR SERVICE PROVIDERS

Communities surrounding the park offer a wide choice of accommodations including hotels, cabins, bed and breakfasts, and campgrounds. For information about accommodations please contact:

Morgan County Chamber of Commerce

3804 Morgan County Hwy
Wartburg, TN 37887
(423)-346-5740
<http://www.morgancountychamber.com>

Eastern National

Obed Visitor Center Bookstore
(423) 346-6295
www.eparks.com/store

Ace Kayaking School

River Guide
2368 Old Federal Road
Ocoee, TN 37361
(865) 385-3204
www.acekayaking.com

Obed River Adventures

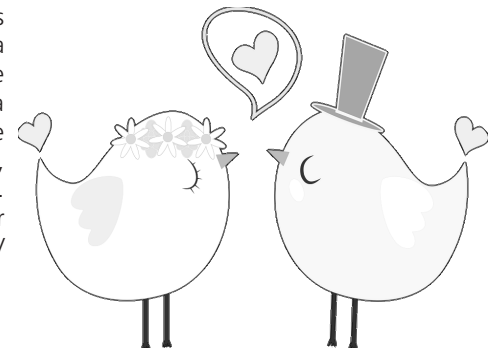
Guided River Trips
168 Lee Terry Rd
Wartburg, TN 37887
(865) 209-4367

Technical Rescue Training, LLC

River Rescue Training
111 Garnet Lane
Oak Ridge, TN 37830
(865) 567-6430
www.rescueswimmer.net

Having a race or getting married?

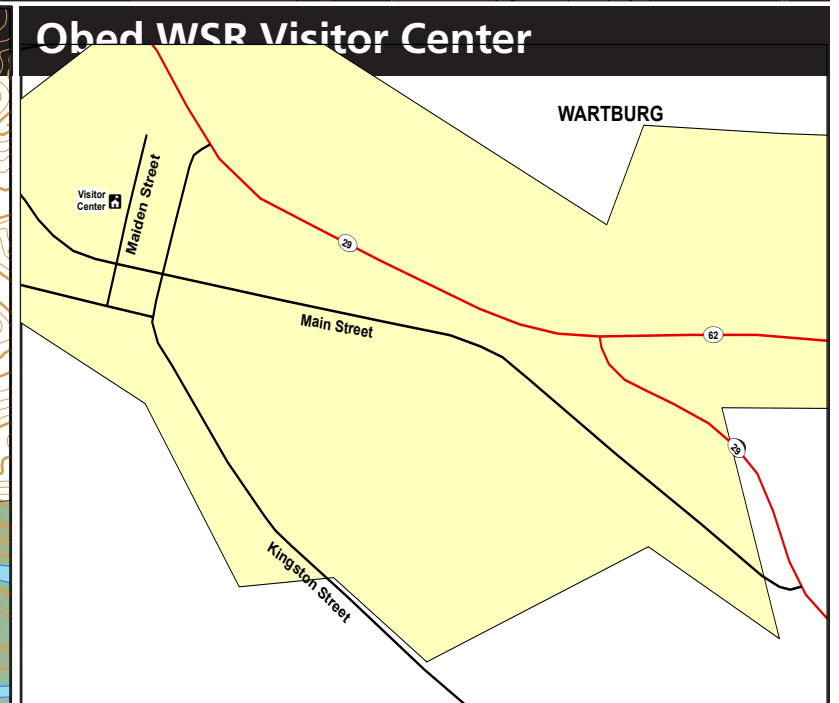
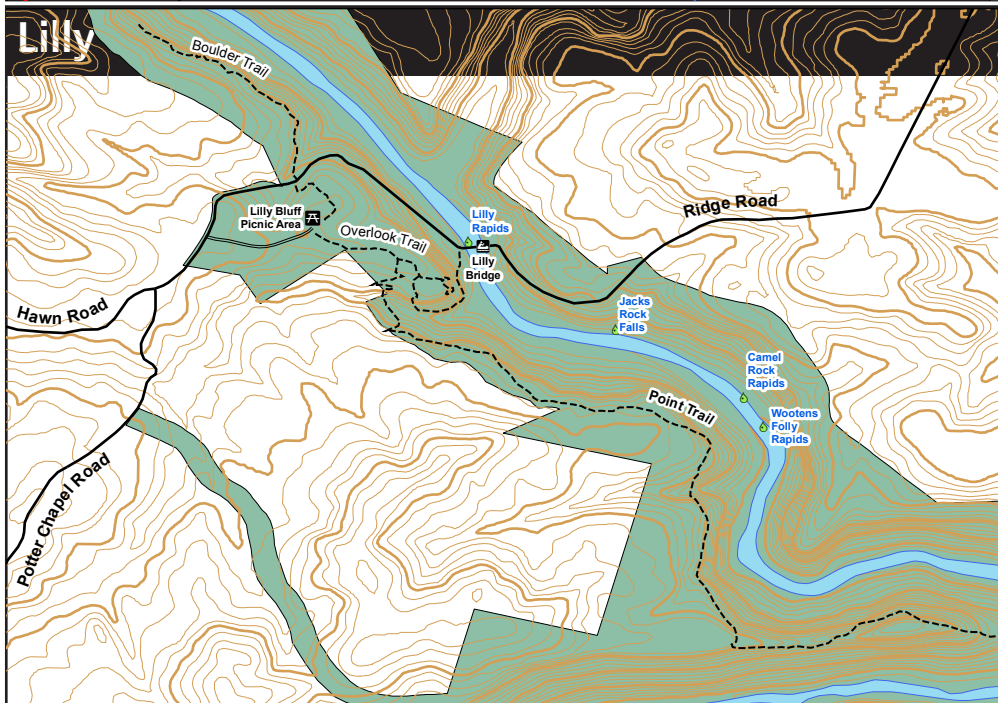
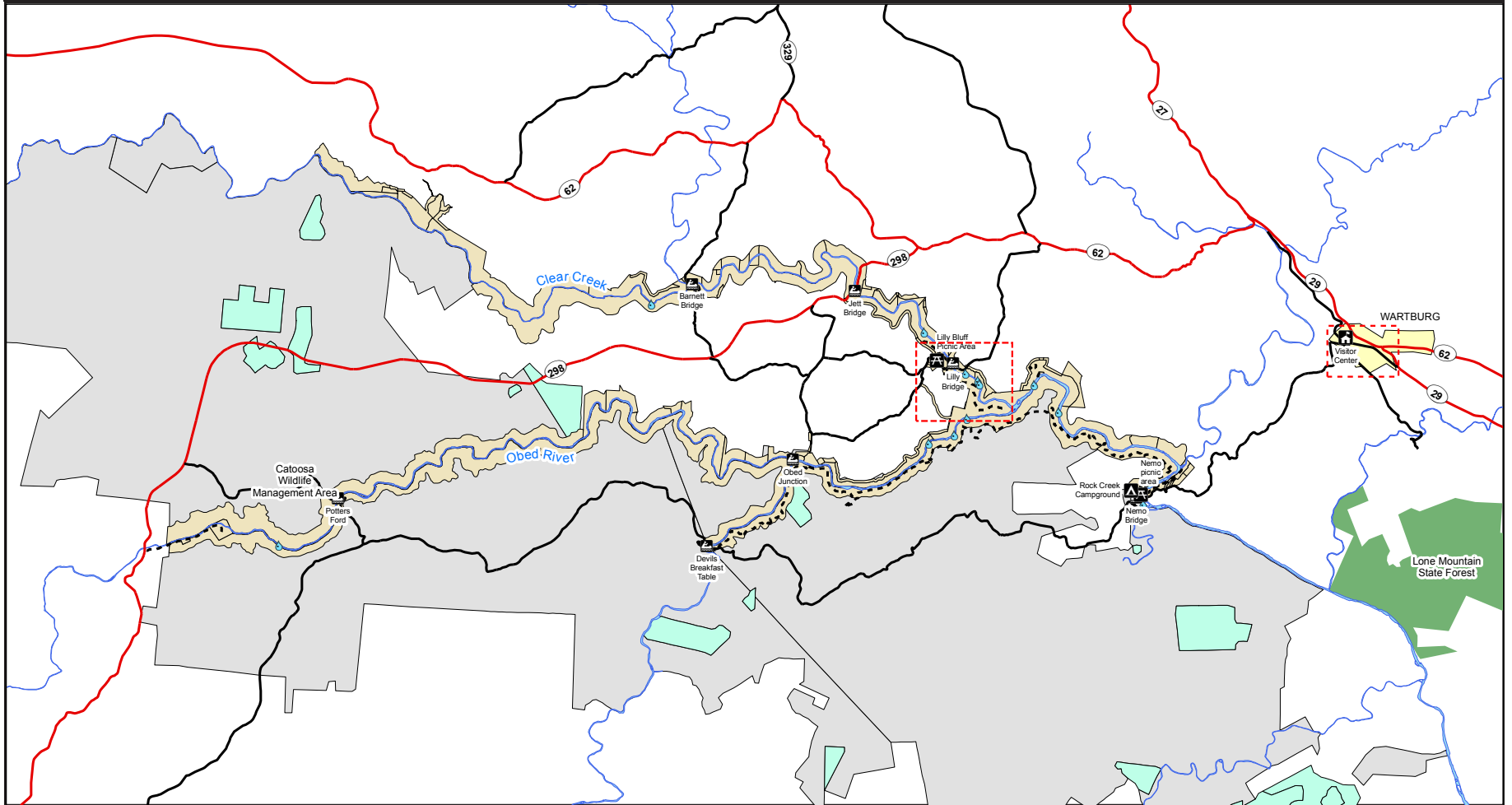
Special events in the park such as river races or weddings require a special use permit. If you need more information about how to obtain a special use permit, contact the Fee Program Manager, at: 423-569-7321, or by email at tish_neal@nps.gov. Information can also be found on our website at: <http://www.nps.gov/obed/planyourvisit/special-use-permits.htm>.



Lost and Found

Report any lost items to rangers to Obed Visitor Center, located at 208 North Maiden Street in downtown Wartburg, Tennessee. Found items should be turned in at this location as well.

Obed Wild & Scenic River



Hiking Trails of the Obed

	Trail Name	Rating	Distance	Time	Description
1	Point Trail	Moderate	1.9 miles	2 hours round trip	This trail culminates on the narrow, exposed ridge that separates the Obed River from Clear Creek before the two flow together.
2	Bridge Trail	Moderate	.3 mile	15-20 minutes	This trail follows steep terrain from Lilly Bridge to the Overlook Trail.
3	Overlook Trail	Easy	.3 mile	10 minutes	Flat stroll through Hemlock forest to a great overlook of the Clear Creek Gorge.
4	Boulder Field Trail	Easy/Moderate	.2 mile	10 minutes	Trail leaves the Lilly Bluff Overlook parking area and winds through huge boulders and impressive stands of Hemlock.
5	Nature Loop	Moderate	1 mile round-trip	30 minutes	Trail leaves from Rock Creek parking area and follows the Cumberland Trail to loop back to parking area. Portions of this trail follow the river.
6	Cumberland Trail-Obed River Section	Difficult	2.6 miles	2 1/2 hours	Trail follows the Cumberland Trail to an old popular river ford site.
7	Devil's Breakfast Table - Rock Creek	Difficult	14.2 miles	8 hours minimum	This trail passes through rugged terrain and offers numerous overlooks of the river canyon. Large portions of this trail are within the Catoosa Wildlife Management Area and are subject to periodic closures
8	Cumberland Trail-Emory River Gorge Section	Moderate	2.6 miles round trip	1 hour	This section of the Cumberland Trail starts at Historic Nemo Bridge and follows the Emory River upstream to the confluence of the Emory and Obed rivers.

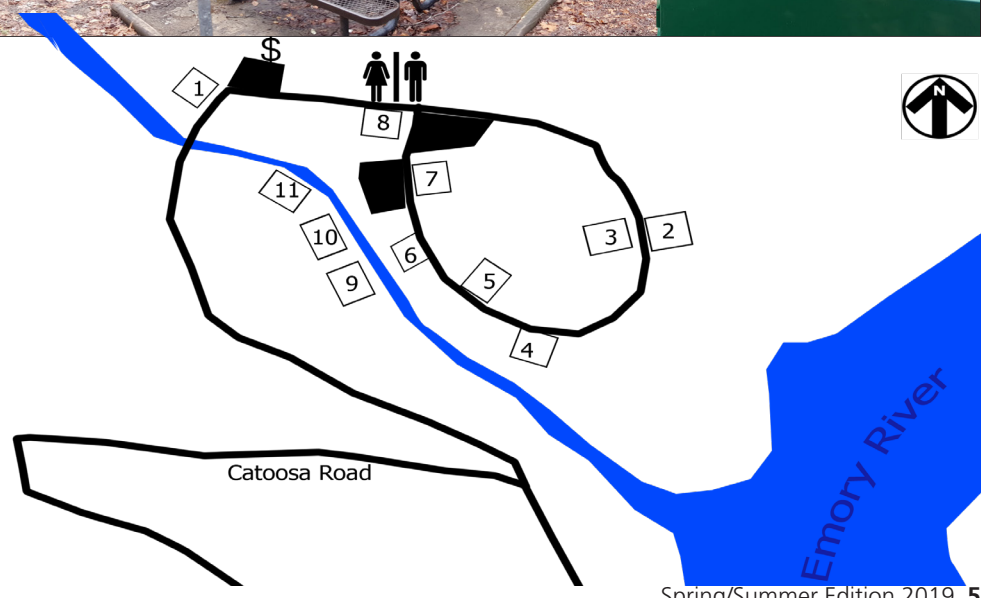
Rock Creek Campground



Rock Creek is a primitive campground open year-round and offers 11 campsites at \$10 per night. There are food storage lockers and wildlife-proof garbage cans to use throughout the campground as well as a centrally located vault toilet facility. No drinking water is located at this area.

The campground is available for reservations on the National Recreation Reservation Service. Reservations can be made up to six months in advance by calling 1-877-444-6777, or online at: www.recreation.gov. For more information, call (423) 346-6294.

Experience all that Obed has to offer by staying a while.



Guided Walks and Talks

Schedules are effective from Memorial Day Weekend until Labor Day 2019.

PROGRAM TITLE	LOCATION	DURATION	SUN	MON	TUE	WED	THU	FRI	SAT
Healthy Hikes & Trail Runs Ranger-led hikes are held on different trails throughout the park on some Fridays and Saturdays (weather permitting). Hikes often include educational talks such as botanical, historical, cultural, or geological subjects. As the hikes are scheduled, they are posted on the park's social media pages.	<i>Locations Vary</i>	<i>Times Vary</i>						Varies	Varies
Coffee with a Ranger The first Saturday of every month meet at Lilly Bridge at 10 AM. Bring any questions you may have and come have a free cup of coffee with a National Park Service ranger.	<i>Lilly Bridge</i>	<i>30 minutes</i>							10:00 AM
Climb with a Ranger - Kids Only The first Saturday of every month meet at Lilly Bridge at 11 a.m. This program is for kids ages 12 and under. The park will provide all of the gear. Children must be accompanied by an adult.	<i>Lilly Bridge</i>	<i>1 hour</i>							11:00 AM First Saturday of each month.
Climb with a Ranger The first Saturday of every month meet at Lilly Bridge at 12 PM. The park will provide all of the gear. All that you need to bring is drinking water, sturdy footwear, a willingness to try new things and a can-do attitude. Event is held regardless of most weather conditions.	<i>Lilly Bridge</i>	<i>3 hours</i>							12:00 PM First Saturday of each month.
Night Skies over the Obed The starry night sky is an important resource that the National Park Service protects. Join park staff to enjoy the spectacular dark sky conditions in the park to view the moon, bright stars, star clusters, and constellations. Telescopes will be available for sky observations. Astronomers are also invited to bring their telescopes to join our program. Program dates, times, and update will be posted on social media.	<i>Locations Vary</i>	<i>Times Vary</i>							Varies
Owl Prowl at the Obed Join us on selected Friday evenings each month during the spring and summer, to search for these unique birds of prey. Meet the park ranger at the Lilly Bluff Overlook Parking Lot, located just off of Ridge Road in Morgan County. Check our park's Facebook page (ObedNPS) to learn the dates and times of this event.	<i>Lilly Bluff Overlook Parking Lot</i>	<i>1 to 1.5 hours</i>						Varies	Varies

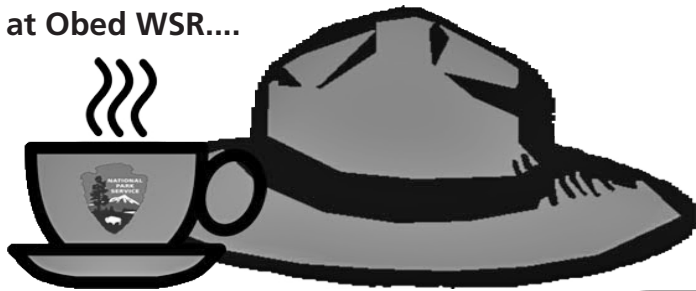
KNOW BEFORE YOU GO

- All programs are free. Above programs schedule is effective from Memorial Day weekend until Labor Day.
- Wear sturdy walking shoes for hikes. You may also want to bring along bug spray and drinking water.
- All children must be accompanied by a parent or guardian at all times.
- Programs may be cancelled due to extreme weather conditions.

- Black bears and other wildlife frequent the area; visitors must follow food and garbage storage regulations.
- Pets must be restrained on a leash at all times. Owners are expected to clean up pet waste and dispose of it properly.
- Inquire at the Visitor Center about other programs offered during the week.

Hey Ranger!

Most commonly asked questions
at Obed WSR....



How often is the Climb with a Ranger Program?

The Climb with a Ranger Program takes place on the first Saturday of each month. Contact the visitor center for more details.

Are there any handicap accessible trails?

Besides our fully accessible visitor center, the Lilly Bluff Overlook Trail is on level ground and is handicap accessible.

Do you have a park movie?

Yes. The Obed park movie is shown upon request inside the Obed Visitor Center. It is about 15 minutes long.

Where can I enjoy a picnic lunch at the Obed?

Many people picnic at the Nemo section of the park, where picnic tables and small grilling stations are located. Still others enjoy taking a bag lunch to Lilly Bluff and enjoying the scenery at the Overlook while eating.

Are there restroom facilities in the park?

Yes. Restroom facilities can be found at the Nemo, Lilly Bridge, Lilly Bluff, Jett, and Barnett sections of the park.

Where are your hiking trails located?

Most of Obed's hiking trails are located at the Lilly Bluff section of the park. They include the Overlook Trail, the Point Trail, the Bridge Trail, and the Boulder Trail. Several trails can also be found at the Nemo section of the park. They include the Emory River Nature Trail, and our section of the Cumberland Trail.

What type of fish can be caught at the Obed?

Smallmouth and largemouth bass, bluegills, catfish, and even an occasional muskie can be caught at the Obed.

What type of license does one need to fish at the Obed?

A Tennessee fishing license is all that is required.

Where are the recycle bins located?

They can be found at the Obed Visitor Center, Rock Creek Campground, Nemo Day Use Area, and the Lilly Bluff Parking Lot.

How much does it cost to visit the Obed?

The Obed is free to all visitors year-round. For those wishing to camp overnight at the Rock Creek Campground, the fee is \$10 per night. Campsite reservations can be made by calling 1-877-444-6777, or online: www.recreation.gov.

Obed WSR was designated an International Dark Sky Park in 2017, what is that?

Only a park of exceptionally clear night skies, and a nocturnal environment that is protected for its scientific, natural, educational, and cultural heritage, as well as its public enjoyment may be eligible. For more information, visit: darksky.org.

Can I bring my dog to the Obed?

Certainly. However, all pets must remain on a leash of no more than six feet in length. Never leave your pet unattended.

Are there any river outfitters?

Yes. Refer to Page 3, under permitted outfitters for more information.

Is backcountry camping allowed in the park?

Yes. A free backcountry camping permit is required and can be obtained at the Obed Visitor Center or online. See page Page 3 for more information.

Where is the Obed Visitor Center located?

The Obed Visitor Center is located at: 208 N. Maiden Street in downtown Wartburg, Tennessee. It is open from 9:00 AM to 5:00 PM (ET), daily.

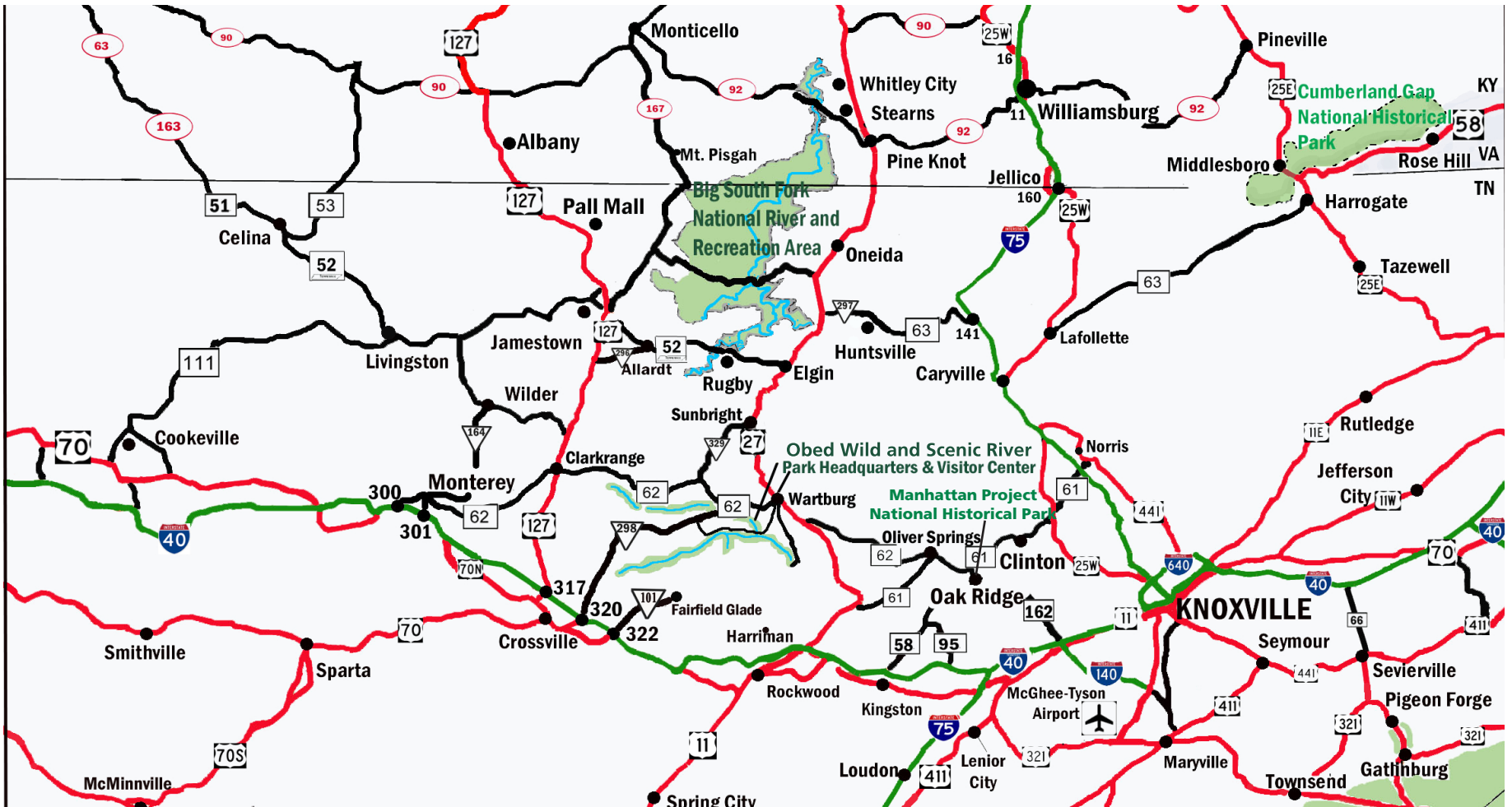
What classification of rapids are available at the Obed?

The various sections of the Obed WSR run from a Class II to a Class IV rapid. The sections include Clear Creek, Daddys Creek, the Emory River, and the Obed River.



National Park Service
U.S. Department of the Interior

Obed Wild and Scenic River
PO Box 429
Wartburg, TN 37841



Obed Wild & Scenic River

PO Box 428
208 N. Maiden Street
Wartburg, TN
(423) 346-6294
Open daily 9:00 AM to 5:00 PM (ET).

Crossville Visitor Center

176 River Otter Drive
Crossville, TN 38571
(931) 787-1755
Memorial Day through Labor Day
9:00 AM to 5:00 PM (CT)
Saturdays and Sundays



SCAN THIS CODE
for directions from website

DIAL 911
for EMERGENCIES

EMERGENCY NUMBERS

Morgan County Ambulance
Wartburg, TN
(423) 346-6601

Morgan County Sheriff
Wartburg, TN
(423) 346-6262

Morgan County Medical Center
224 Old Mill Road
Wartburg, TN
(423) 346-6221

Roane Medical Center
412 Devonia Street
Harriman, TN
(865) 882-1323

Ambulatory Care Center
1236 Knoxville Hwy
Wartburg, TN
(423) 346-5566