

# Composites

## By DIRECTA

Directa's products are developed, tested and evaluated by our selected team of highly-qualified and renowned Swedish and international dental professionals with the aim of making life easier for the dental professionals in the daily clinical work.

“The optimal combination of aesthetics and strength!”

## Design By Dentists™

Directa's products are developed, tested and evaluated by our selected team of highly-qualified and renowned Swedish and international dental professionals with the aim of making life easier for the dental professionals in the daily clinical work.

**DIRECTA**  
directadentalgroup.com



**DIRECTA AB**  
P.O. Box 723,  
194 27 Upplands Väsby, SWEDEN  
+46 8 506 505 75

**DIRECTA Inc**  
64 Barnabas Road, Unit 3  
Newtown, CT 06740, United States  
203.491.2273

**DIRECTA GERMANY**  
Hammergutstr. 11  
92245 Kümmersbruck, GERMANY

www.directadental.com  
info@directadental.com

2016-01

DirectaDentalGroup

**DIRECTA** **topdental** **ORSING**  
directadentalgroup.com directadentalgroup.com directadentalgroup.com



**DIRECTA**  
directadentalgroup.com

## Complete assortment for composite filling therapy

The line of products offers a complete solution with etching gel, bonding and liner. As filling material you can choose between our modern nano hybride composite and traditional micro hybrid composite with a practical colour system.

### ANA Norm Aesthetics

a unique colour system

### ANA Liner

for gap free composite restorations

### ANA Etching Gel

for precise and effective etching

### NANOSIT<sup>®</sup> Nano Hybrid Composit

an optimal combination of aesthetics and strength

### NANOSIT<sup>®</sup> Gun

gun dispenser





## Benefits.

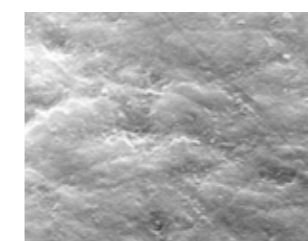
Pre filled syringes in MAXI-Pack at Jumbo price  
 Ideal viscosity for precise application  
 Clearly detectable  
 Easy to rinse off

## ANA Etching Gel 37% phosphoric acid

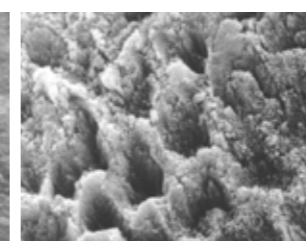
Nano sized particles are also of importance for ANA Etching Gel. The consistency gives handling properties required by all dentists such as exact application at the correct time assuring a complete rinse off. No phosphoric acid left in the cavity. ANA Etching gel has got these outstanding properties.

ANA Etching Gel is an enamel and dentine etchant with 37% phosphoric acid. It is a well established fact that etching materials should contain 35-40% phosphoric acid.

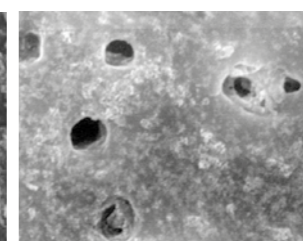
ANA Etching Gel stays in place without collapsing. The ideal viscosity in combination with the blue colour enables very precise and clearly detectable placement. The thin bendable needles allow accurate application. Very easy and fast to rinse off.



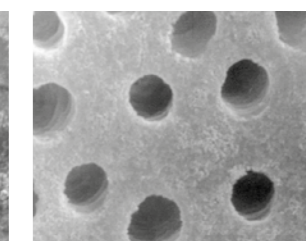
Enamel without treatment x 4000.



Enamel treated with ANA Etching gel x 4000.



Dentine without treatment x 4000.



Dentine treated with ANA Etching gel x 4000.

**ANA Etching Gel**  
 2 syringes of 2 ml  
 2 Needles  
 Instructions for use  
 Prod No 1510200

**ANA Etching Gel  
 MAXI PACK**  
 10 syringes of 2 ml  
 10 Needles  
 Instructions for use  
 Prod No 1510400

**ANA Etching Gel**  
 100 pcs, Needles  
 Prod No 1510500

From report on effectiveness of new ANA Etching Gel. By prof. Paz Alejandro G.C. Dental material University J.F. Kennedy, Bs. Argentina.  
 The analysis showed appropriate values for diameter and depth of the etch pattern in enamel. In dentine the decalcification left the tubules exposed in appropriate form.



NANOSIT® Gun  
Prod No 1353500

**The NANOSIT® kit contains:**

3x3 g, nano hybrid composite  
A2 (x1), A3(x1) and A3.5 (x1)  
Prod No 1350000

**Refills:**

**NANOSIT® A1**  
3g, nano hybrid composite  
Prod No 1350400

**NANOSIT® A2**  
3g, nano hybrid composite  
Prod No 1350100

**NANOSIT® A3**  
3g, nano hybrid composite  
Prod No 1350200

**NANOSIT® A3,5**  
3g, nano hybrid composite  
Prod No 1350300

**The NANOSIT®TIP kit contains:**

30 x 0,28 g, nano hybrid composite  
(A2, A3 and A3.5)  
Prod No 1351000

**Refills:**

**NANOSIT® A1**  
20 x 0,28g, nano hybrid composite  
Prod No 1351100

**NANOSIT® A2**  
20 x 0,28g, nano hybrid composite  
Prod No 1351200

**NANOSIT® A3**  
20 x 0,28g, nano hybrid composite  
Prod No 1351300

**NANOSIT® A3,5**  
20 x 0,28g, nano hybrid composite  
Prod No 1351400

## Benefits.

Outstanding aesthetics  
Extremely good modelling properties  
Excellent finishing properties  
No colour change when light cured  
Thixotropic consistency with well balanced viscosity  
Does not stick to instruments

## Nanosit® nano hybrid composite

Modern composite utilizing the latest experiences of filler distribution. Our Nano hybrid composite gives high clinical handling properties as well as strength and outstanding aesthetics for all indications. Colours are of most importance thinking of efficiency and economy. Few colours for almost all teeth.

### Nano hybrid

Thanks to the properties of the nano hybrid particles Nanosit offers excellent aesthetics. The inorganic primary particles are on average 7 nm and the strength is enhanced by the Barium glass filler in sizes between 200 and 2000 nm. This variation of filler sizes results in top finishing properties as well as high strength.

### Colours

Experience shows that major part of all composite fillings are restored using few colours. Only three shades are needed to cover the greater part of the daily clinical cases, A2, A3 and A3,5 i.e. the three shades of Nanosit. In addition, the shade A1 is available as a refill.

### PROPERTIES:

Depth of cure	2,5 mm
Flexural strength	116 MPa
Water sorption	16 µg/mm <sup>3</sup>
Water solubility	-1 µg/mm <sup>3</sup>
Radiopacity	2 mmAl
Average particle size	7 nm
Designed for classes	I, II, III, IV, V
Complies with	ISO 4049
Tot. inorganic filler content	74%Wt

**Benefits.**

Compensate composite shrinkage  
 Increase bonding strenght  
 Biocompatible  
 Radio-opaque

## ANA Liner compomer lining

This original compomer composition allows controlled expansion which is an important property to compensate the curing contraction of composite materials. Thanks to the glass ionomer content ANA Liner doubles the adhesion to dentine. As a lining material it can also be used for porcelain fillings. ANA Liner is also suitable for temporary and minor fillings.

ANA Liner is a one component light cured lining material. Inserted directly from the syringe ANA Liner offers a very convenient handling. The syringe is unique, elegant and offers an easy application. Lining has never been easier.

Gap free composite restorations are a fact when this liner is used as the expansion is approx. 1 %. This compensates the curing contraction in a composite filling. ANA Liner bonds to the dentine which prevents the formation of marginal gaps protecting from bacterial penetration which might lead to pulp damage or post operative sensitivity.

**COMPOSITION:**

Polymethacrylated polycarbonica acid	4%
Polyacrylic acid	7%
BIS-GMA	8%
Triethylenglycoldimethacrylate	6%
Amine/campherquinone catalyst	1%
Ionomer cement filler	50%
Bariumglass/SiO <sub>2</sub>	24%



**ANA LINER 2-pack**  
 Syringes, 2x0,3 g  
 Instructions for use  
 Prod No 1610300

**ANA LINER**  
 Syringes, 10x0,3 g  
 Instructions for use  
 Prod No 1610000

**Benefits.**

One component – time saving  
 Acetone based – water chasing  
 Universal – for all fillings

## ANA Single Bond for strong dentine and enamel bond

One liquid in a single bottle for strong bonding to etched enamel and dentine. When bonding to dentine it is important to penetrate the bonding into the tubili. This is simpler if using a water chasing agent.

In ANA Single Bond, acetone is the water chasing agent bringing the adhesion deep down into the dentine tubili. Many years of clinical experiences shows that ANA Single Bond is a reliable material.

**COMPOSITION:**

Acetone	75%
Methacrylated phosphoric acid	10%
HEMA	5%
Elastomeric resin	5%
TEGDMA	4%
Catalyst	1%

**Ana Single Bond**  
 Glass bottle with adhesive 5 ml  
 Prod No 1520100



**ANA NORM AESTHETICS****Kit contains:**

Universal, 10 x 0.3g  
 White, 5 x 0.3g  
 Yellow, 5 x 0.3g  
 Brown, 5 x 0.3g  
 Grey, 5 x 0.3g  
 Translucent, 5 x 0.3g  
 Shade guide  
 Instructions for use  
 Prod No 1330000

**Refills:**

Universal, 20 x 0.3g  
 Translucent, 10 x 0.3g  
 White, 10 x 0.3g  
 Yellow, 10 x 0.3g  
 Brown, 10 x 0.3g  
 Grey, 10 x 0.3g  
 Shade guide

Prod No 1330100  
 Prod No 1330200  
 Prod No 1330300  
 Prod No 1330400  
 Prod No 1330500  
 Prod No 1330600  
 Prod No 1330700

**Benefits.**

Excellent radiopacity  
 High gloss polish ability  
 The ANA Norm Colour system  
 Small polymerisation shrinkage

**ANA Norm Aesthetics  
micro hybrid composite**

A micro hybrid composite with excellent radio opacity, high gloss polishability, low polymerisation shrinkage and with a unique colour system.

**The colour system**

Determine the direction of tooth colour; The Universal shade alone accommodates the majority of patients. Universal is used on its own.

Choose between the dentine colours, White, Yellow, Grey or Brown.

Insert the selected colour as dentine. Insert Universal Translucent as enamel. The thickness of the layers determines the intensity of the colour. If the tooth colour is very intense one of the dentine colours is used on its own.

Polish to an outstanding gloss finish.

**Achieve the perfect shade**

Determine the direction of tooth colour: High intensity of the tooth colour means thicker layer of the dentine colour.

Less intensity means thinner layer of dentine colour.

**PROPERTIES:**

Depth of cure	3,5 mm
Flexural strength	120MPa
Water sorption	25µg/mm <sup>3</sup>
Radiopacity	2 mmAl
Designed for classes	I, II, III, IV, V
Complies with	ISO 4049
Tot. inorganic filler content	77%Wt.

