

# 722 SPEC

---

INTERIOR FINISH SELECTIONS

2019



**YELLOWSTONE CLUB**

# MAIN LEVEL PLAN

NOT TO SCALE / SQUARE FOOTAGES ARE APPROXIMATE

# LOWER LEVEL PLAN

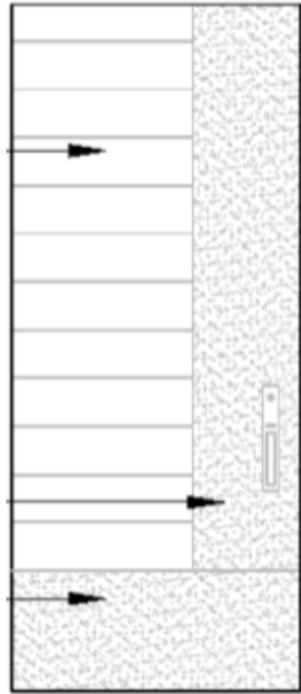
NOT TO SCALE / SQUARE FOOTAGES ARE APPROXIMATE

# UPPER LEVEL PLAN

NOT TO SCALE / SQUARE FOOTAGES ARE APPROXIMATE

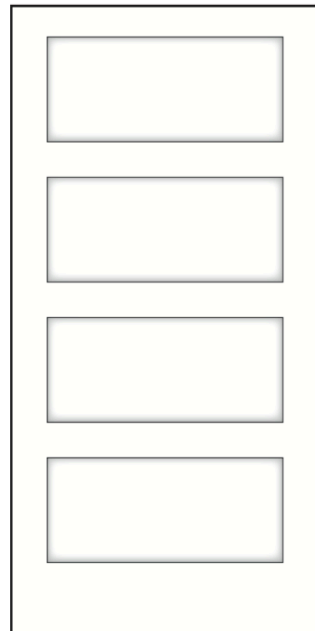
# BASE, DOOR & WINDOW FINISHES

## ENTRY DOOR



CUSTOM DOOR  
*Per Architect Drawing*

## INTERIOR DOOR



FOUR PANEL  
*Finish: Match Base/Case  
Species: Paint Grade*

## HARDWARE

*Inox Hardware*



SEQUOIA, GT BACKPLATE



SATIN STAINLESS STEEL  
*Inox Hardware Finish*



FLOOR REGISTER  
*Pattern: Linear Bar Grille  
Finish: B-15 Silver*



WALL & CEILING REGISTER  
*Pattern: Linear Bar Grille  
Finish: B-15 Silver*

## BASE DETAILS

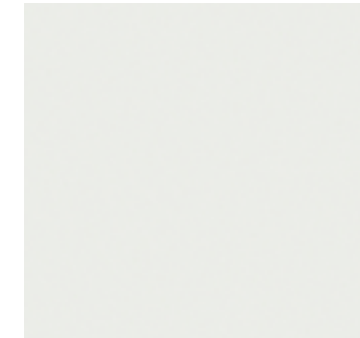
*4" Flush Base w/ 1/4" Rabet cut  
Per Architect*

## CASE DETAILS

*2 3/4" trim width  
Per Architect*

## BASE & DOOR FINISH

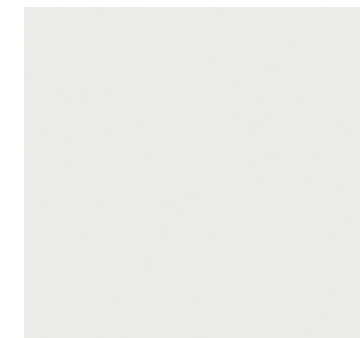
*Painted*



DECORATOR'S WHITE CC-20  
*Benjamin Moore  
Finish: Semi-Gloss  
Species: Paint Grade*

## WINDOW FINISH

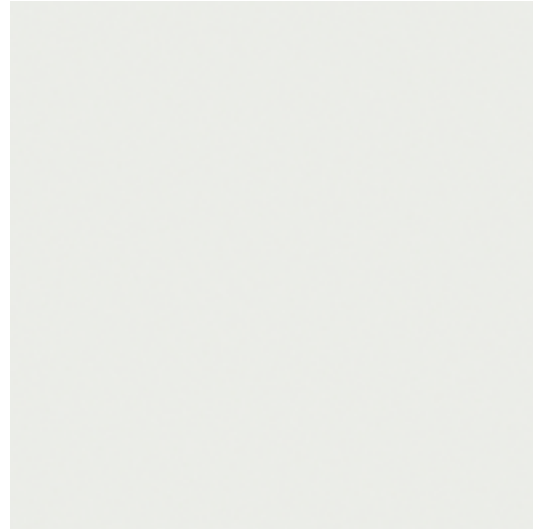
*Painted*



DECORATOR'S WHITE CC-20  
*Benjamin Moore  
Finish: Semi-Gloss  
Species: Paint Grade*

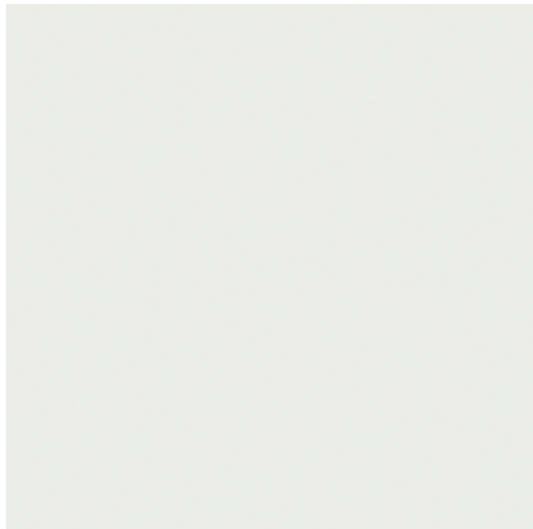
# FINISHES THROUGHOUT

## CEILING FINISH



**DECORATOR'S WHITE CC-20**  
Benjamin Moore  
Finish: Flat

## WALL FINISH



**DECORATOR'S WHITE CC-20**  
Benjamin Moore  
Finish: Eggshell (level 5 smooth finish)

## TIMBER



**TIMBER**  
Species: Reclaimed Resawn Douglas Fir  
Finish: River Homestead Grey

## TONGUE & GROOVE CEILING



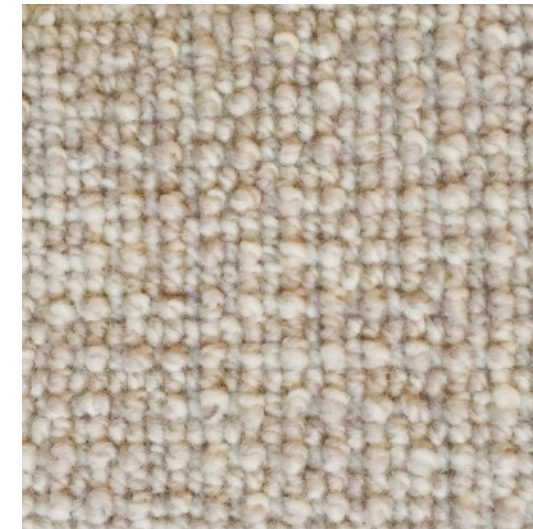
**T&G CEILING**  
Species: New Douglas Fir  
Stain: River Homestead Grey

## HARDWOOD FLOORING



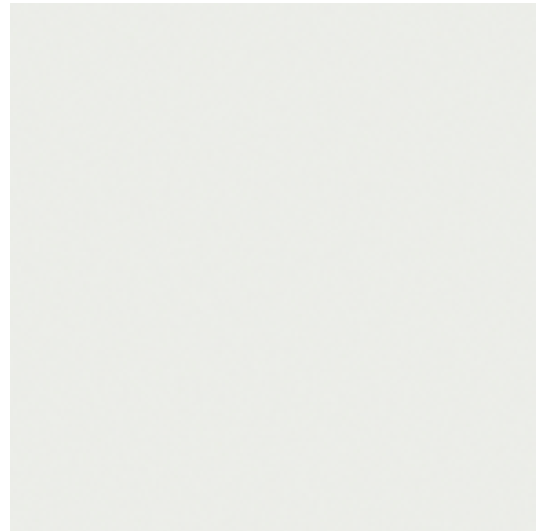
**ARTISTRY - LOFT COLLECTION**  
Color: Platinum Oak  
Species: European Oak  
Size: 6" Wide Plank  
Finish: UV Oil

## CARPET



**UNIQUE CARPETS - HARRISON PARK**  
Color: 4429 Sandy Beach  
100% Wool, tufted

CEILING FINISH



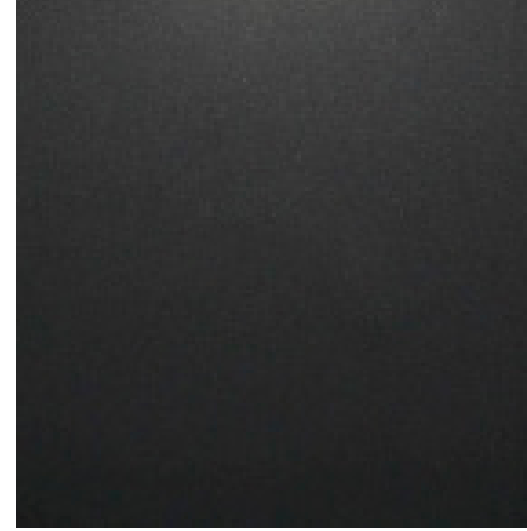
**DECORATOR'S WHITE CC-20**  
*Benjamin Moore*  
*Finish: Flat*

TONGUE & GROOVE CEILING



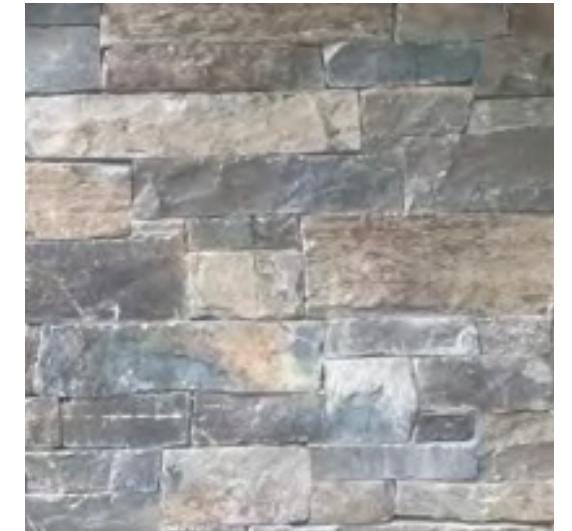
**T&G CEILING**  
*Species: New Douglas Fir*  
*Stain: River Homestead Grey*

STONE FLOORING



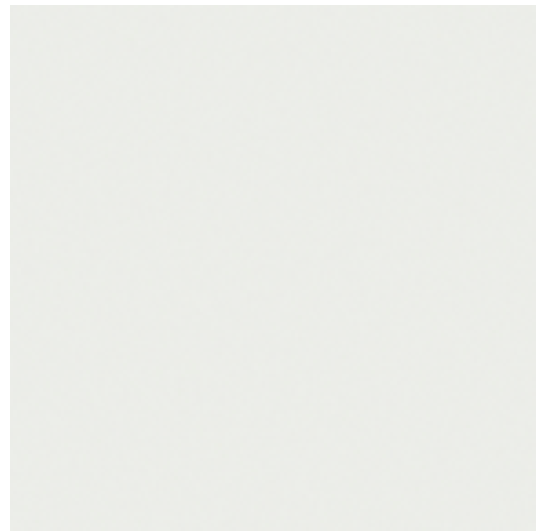
**BLACK ABSOLUTE**  
*Flamed Granite*  
*Size: 16" x 24", brickset, offset 1/3, parallel to front door*  
*Base: 3"*

ACCENT WALL



**CHIEF CLIFF**  
*Color: Grey Blend, Ledge Stone Layup*

WALL FINISH



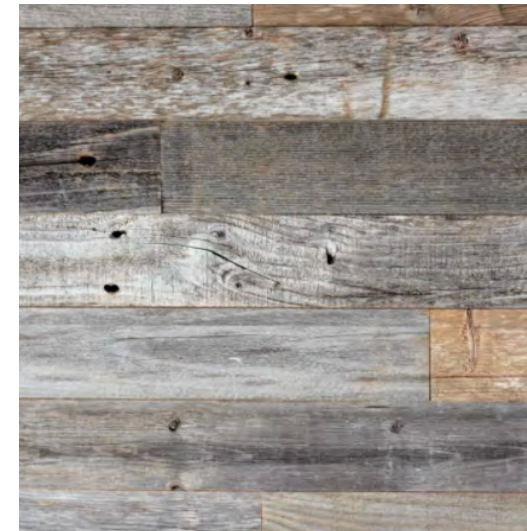
**DECORATOR'S WHITE CC-20**  
*Benjamin Moore*  
*Finish: Eggshell (level 5 smooth finish)*

TIMBER



**TIMBER**  
*Species: Reclaimed Resawn Douglas Fir*  
*Finish: River Homestead Grey*

CLOSET DOOR FINISH

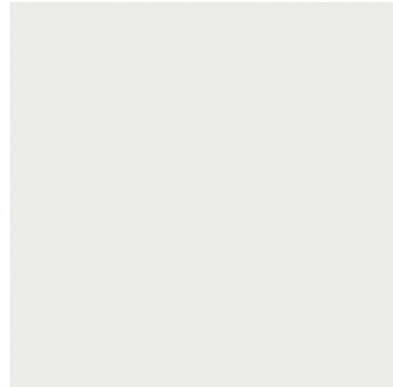


**GRAY BARNBOARD**  
*1" x 6/8/10" Random Widths*  
*Finish: Natural As Is*

# GREAT ROOM FINISHES

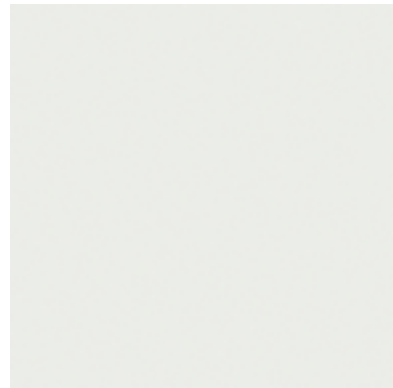
102

## CEILING FINISH



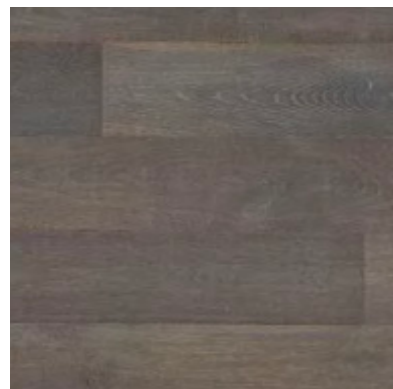
**DECORATOR'S WHITE CC-20**  
Benjamin Moore  
Finish: Flat

## WALL FINISH



**DECORATOR'S WHITE CC-20**  
Benjamin Moore  
Finish: Eggshell (level 5 smooth finish)

## HARDWOOD FLOORING



**ARTISTRY - LOFT COLLECTION**  
Color: Platinum Oak  
Species: European Oak  
Size: 6" Wide Plank  
Finish: UV Oil

## TIMBER



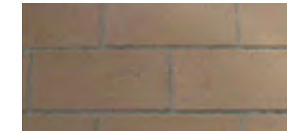
**TIMBER**  
Species: Reclaimed Resawn Douglas Fir  
Finish: River Homestead Grey

## TONGUE & GROOVE CEILING



**T&G CEILING**  
Species: New Douglas Fir  
Stain: River Homestead Grey

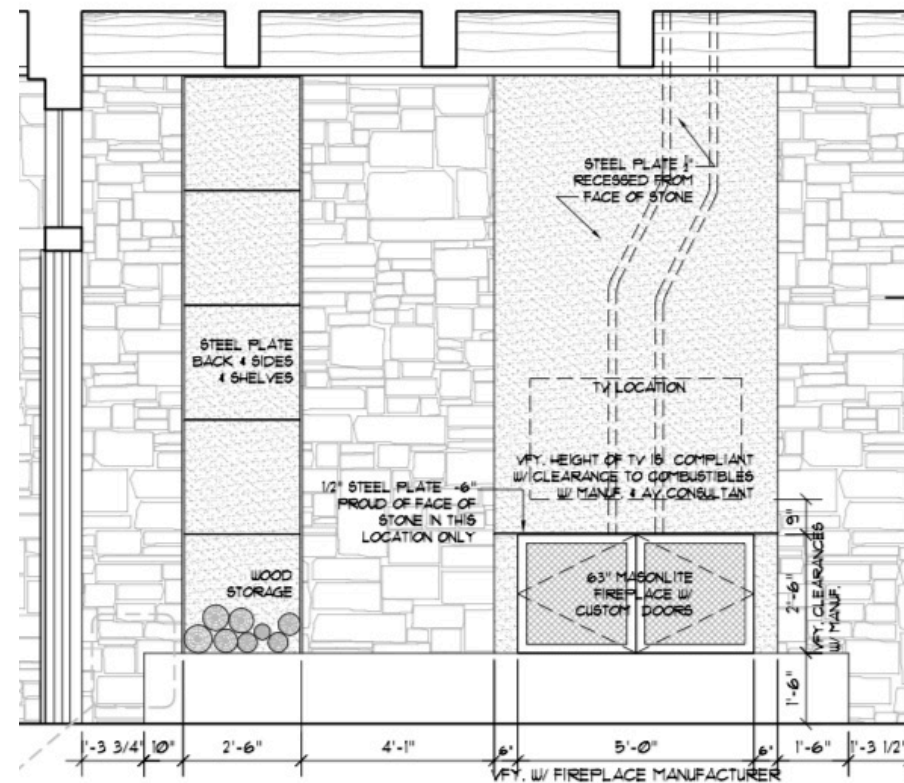
## FIREPLACE



INTERIOR PANEL OPTION

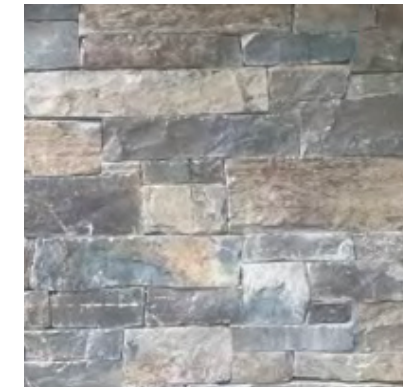
**MASON-LITE WOOD BURNING FIREPLACE**  
Size: 63"  
Lightweight Masonry Fireplace Insert w/ custom firescreen

## FIREPLACE ELEVATION



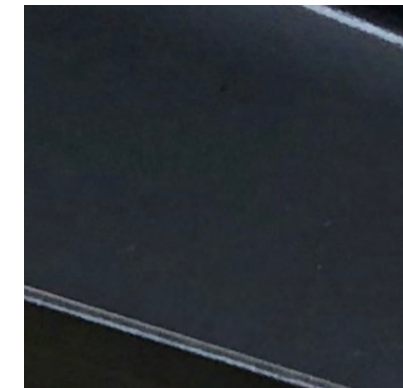
**FIREPLACE CONCEPT**  
Design Concept Only - Details to be Confirmed by Architectural Elevations and Interior Designer

## FIREPLACE SURROUND



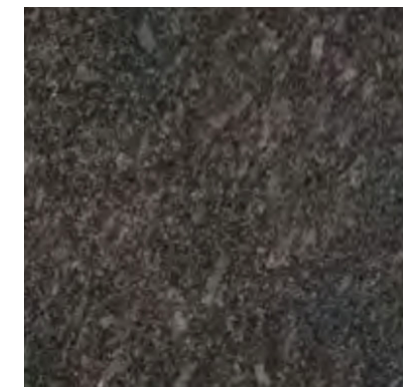
**CHIEF CLIFF**  
Color: Grey Blend, LedgeStone Layup

## STEEL BEAMS, ACCENTS & MANTLE



**PAINTED**  
Color: Charcoal Grey  
Finish: Semi-Gloss

## FIREPLACE HEARTH TOP



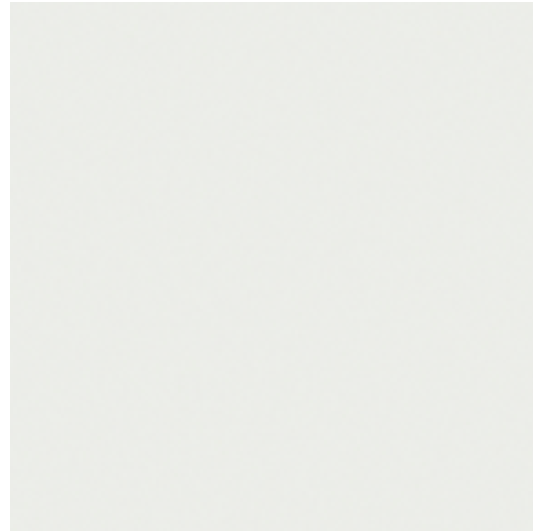
**STEEL GREY - LEATHERED GRANITE**  
2cm slab, mitered 3cm appearance thickness



# DINING ROOM FINISHES

103

## WALL FINISH



**DECORATOR'S WHITE CC-20**  
*Benjamin Moore*  
*Finish: Eggshell (level 5 smooth finish)*

## TONGUE & GROOVE CEILING



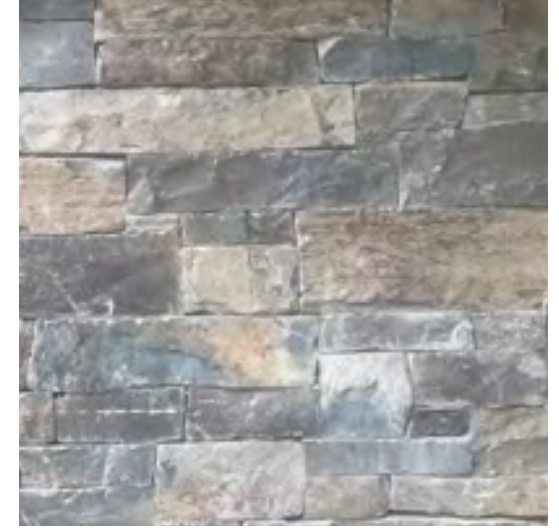
**T&G CEILING**  
*Species: New Douglas Fir*  
*Stain: River Homestead Grey*

## HARDWOOD FLOORING



**ARTISTRY - LOFT COLLECTION**  
*Color: Platinum Oak*  
*Species: European Oak*  
*Size: 6" Wide Plank*  
*Finish: UV Oil*

## ACCENT WALL



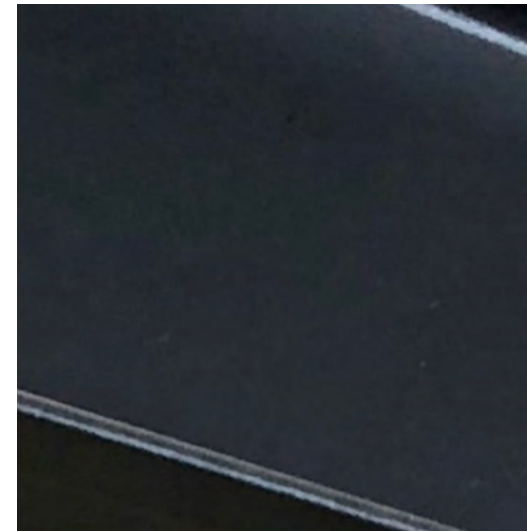
**CHIEF CLIFF**  
*Color: Grey Blend, Ledge Stone Layup*

## TIMBER



**TIMBER**  
*Species: Reclaimed Resawn Douglas Fir*  
*Finish: River Homestead Grey*

## STEEL BEAMS

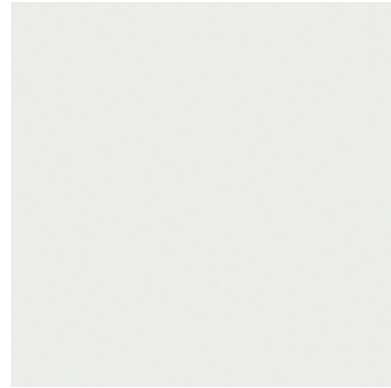


**PAINTED**  
*Color: Charcoal Grey*  
*Finish: Semi-Gloss*

# WET BAR PLUMBING, APPLIANCES & FINISHES

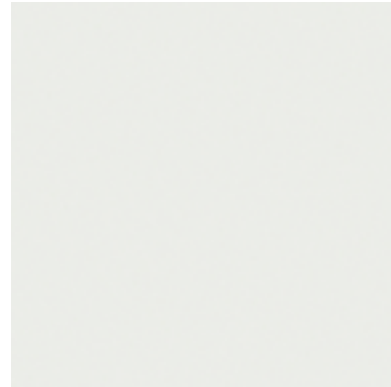
103

## CEILING FINISH



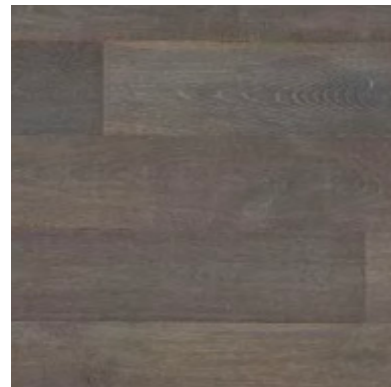
**DECORATOR'S WHITE CC-20**  
*Benjamin Moore*  
*Finish: Flat*

## WALL FINISH



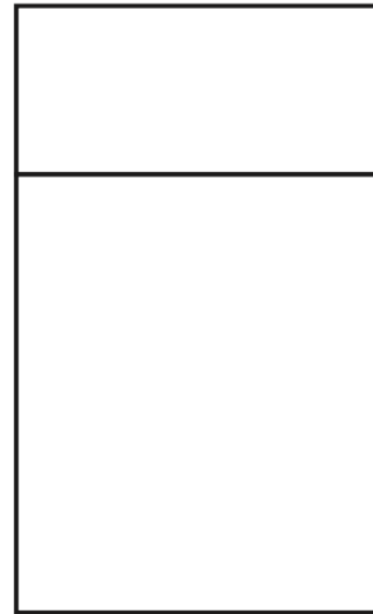
**DECORATOR'S WHITE CC-20**  
*Benjamin Moore*  
*Finish: Eggshell (level 5 smooth finish)*

## HARDWOOD FLOORING



**ARTISTRY - LOFT COLLECTION**  
*Color: Platinum Oak*  
*Species: European Oak*  
*Size: 6" Wide Plank*  
*Finish: UV Oil*

## CABINET & HARDWARE



**PANEL STYLE**  
*Solid Door & Solid Drawer*

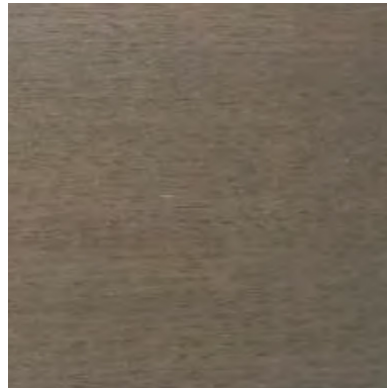


**EMTEK**  
*Cabinet Edge Pull*  
*4" or 6"*



**POLISHED CHROME**  
*Emtek Finish*

## CABINETRY FINISH



**CUSTOM FINISH**  
*Finish: Custom Stain "Twilight"*  
*Species: Plain Sawn Oak*

## STONE SLAB

*Countertop & Backsplash*



**CRYSTAL WHITE MARBLE**  
*3cm, Straight Edge, polished*  
*Finish: Polished*  
*Backsplash Size: Full Height*

## FAUCET



**BLANCO**  
*Culina Mini Prep*  
*Single Hole Pullout Faucet*  
*Finish: Polished Chrome*

## SINK



**ECLIPSE**  
*Finish: Stainless Steel*  
*Size: 19" x 19" x 10" OD*

## WINE STORAGE

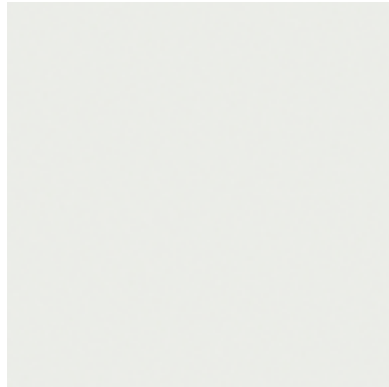


**SUB-ZERO**  
*24" Undercounter Wine Storage*  
*Finish: Panel Overlay with glass*

# MAIN LEVEL POWDER ROOM FINISHES & PLUMBING

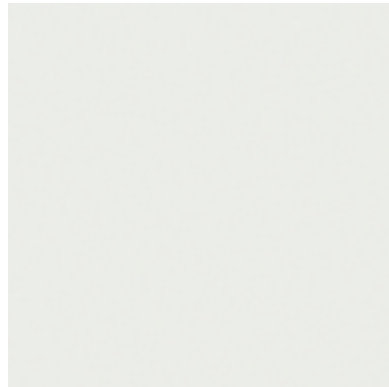
105

## CEILING FINISH



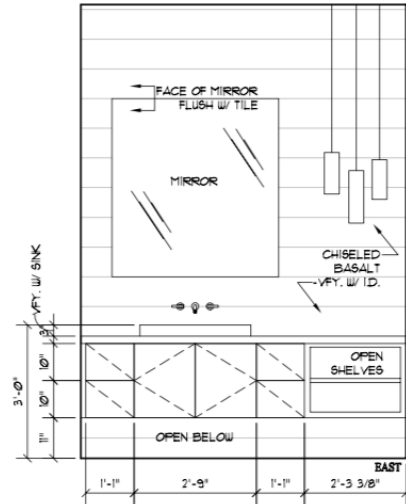
**DECORATOR'S WHITE CC-20**  
Benjamin Moore  
Finish: Flat

## WALL FINISH



**DECORATOR'S WHITE CC-20**  
Benjamin Moore  
Finish: Eggshell (level 5 smooth finish)

## CABINET & HARDWARE



VANITY DESIGN CONCEPT

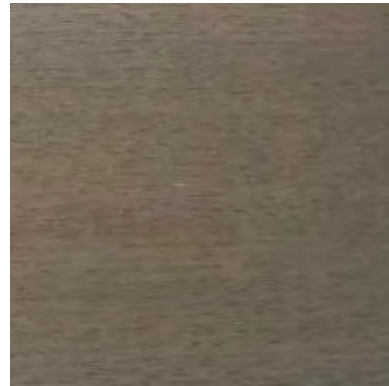


**EMTEK**  
Cabinet Edge Pull  
4" or 6"



**POLISHED CHROME**  
Emtek Finish

## CABINETRY FINISH



**CUSTOM FINISH**  
Finish: Custom Stain "Twilight"  
Species: Plain Sawn Oak

## ACCESSORIES

Dornbracht Hardware



**TARA SERIES TOWEL BAR**  
Size: 18"



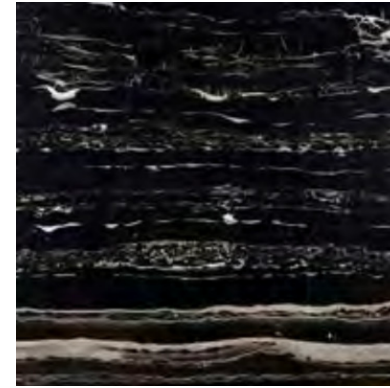
**TARA SERIES TISSUE HOLDER**



**POLISHED CHROME**  
Dornbracht Hardware Finish

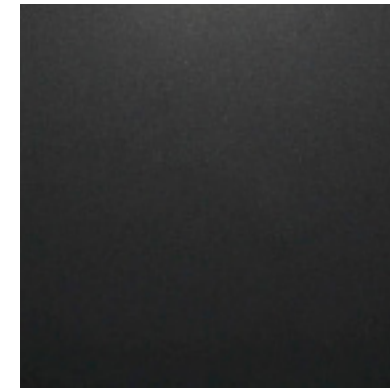
## STONE SLAB

Countertop



**PORT BLACK MARBLE**  
2cm, Mitered Edge  
Finish: polished

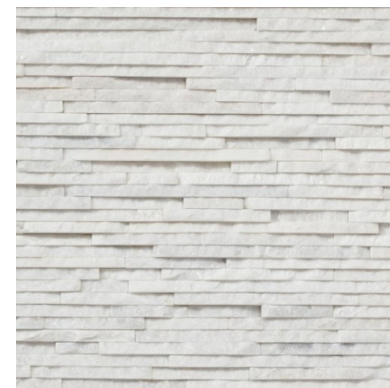
## STONE FLOORING



**BLACK ABSOLUTE**  
Flamed Granite  
Size: 16" x 24", straight set parallel to vanity  
Base: 3"

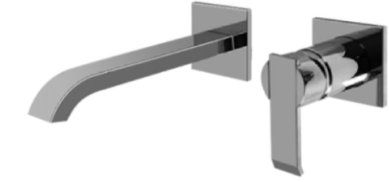
## VANITY BACKSPLASH

Full Height



**REALSTONE SYSTEMS**  
Thin Arctic White Shadowstone Panel  
Size: 6" x 24"  
Splitface Quartzite

## FAUCET



**GRAFF**  
Qubic Tre, wall mounted faucet  
Finish: Polished Chrome  
9.25" Reach

## SINK



**NATIVE TRAILS**  
Nipomo Vessel Sink  
Color: Pearl  
Size: 20"W x 16"D x 5"H

## TOILET

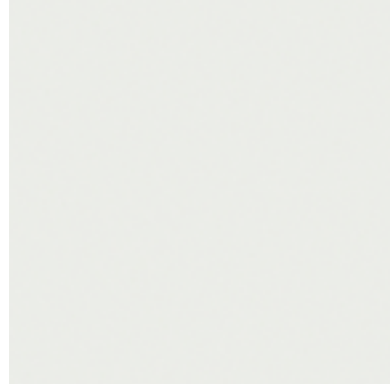


**TOTO**  
Aquia® IV Toilet - 1.28 GPF & 0.8 GPF  
Color: Cotton (White)

# STAIR FINISHES

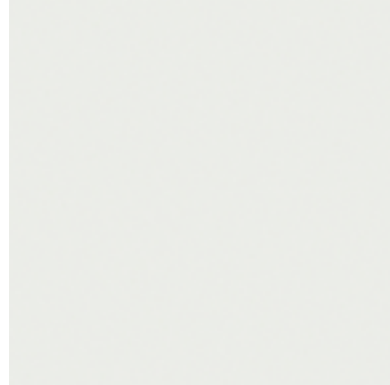
001/106/201

## CEILING FINISH



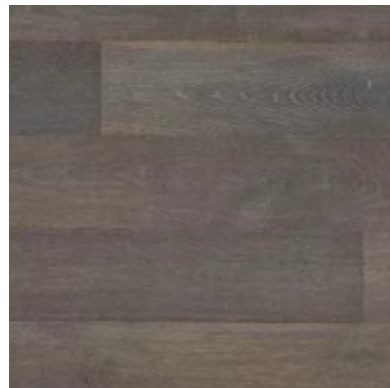
**DECORATOR'S WHITE CC-20**  
Benjamin Moore  
Finish: Flat

## WALL FINISH



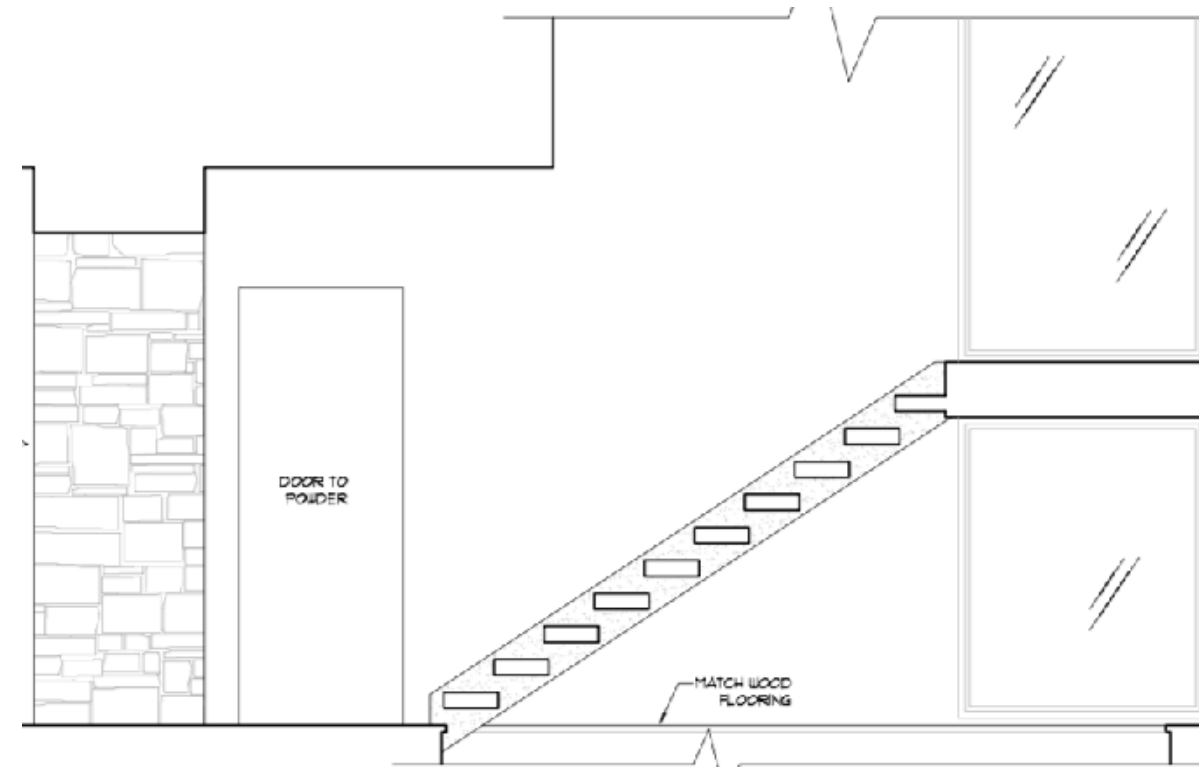
**DECORATOR'S WHITE CC-20**  
Benjamin Moore  
Finish: Eggshell (level 5 smooth finish)

## HARDWOOD FLOORING



**ARTISTRY - LOFT COLLECTION**  
Color: Platinum Oak  
Species: European Oak  
Size: 6" Wide Plank  
Finish: UV Oil

## STAIR ELEVATION

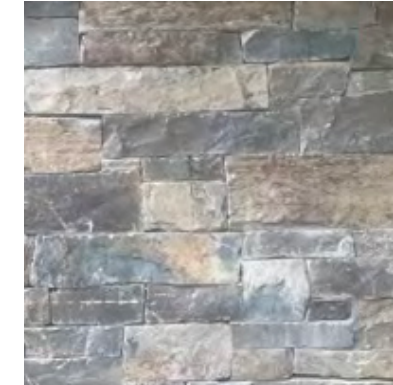


### STAIR CONCEPT

*Design Concept Only - Details to be Confirmed by Architectural Elevations and Interior Designer*

## ACCENT WALL

STAIR 106 ONLY

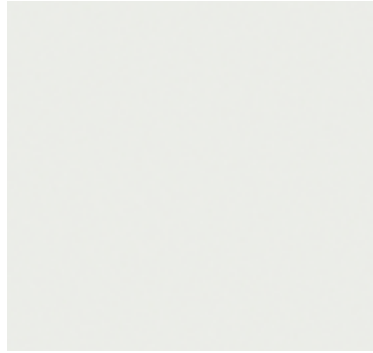


**CHIEF CLIFF**  
Color: Grey Blend, Ledge Stone Layup

# KITCHEN FINISHES

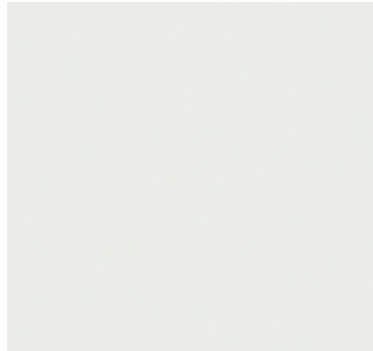
104

## CEILING FINISH



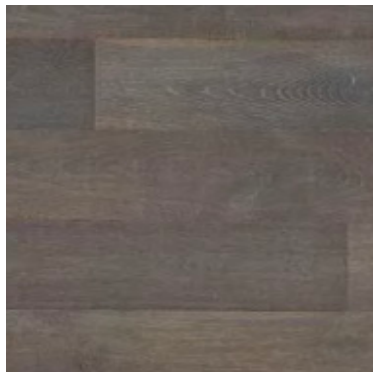
**DECORATOR'S WHITE CC-20**  
*Benjamin Moore*  
*Finish: Flat*

## WALL FINISH



**DECORATOR'S WHITE CC-20**  
*Benjamin Moore*  
*Finish: Eggshell (level 5 smooth finish)*

## HARDWOOD FLOORING



**ARTISTRY - LOFT COLLECTION**  
*Color: Platinum Oak*  
*Species: European Oak*  
*Size: 6" Wide Plank*  
*Finish: UV Oil*

## CABINET & HARDWARE



**PANEL STYLE**  
*Solid Door & Solid Drawer*

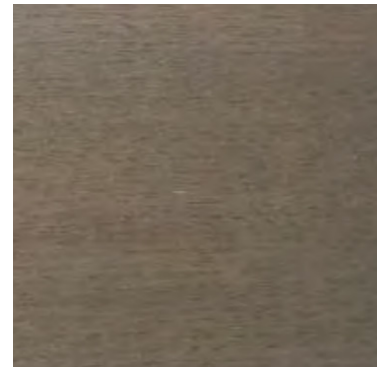


**EMTEK**  
*Cabinet Edge Pull*  
*4" or 6"*



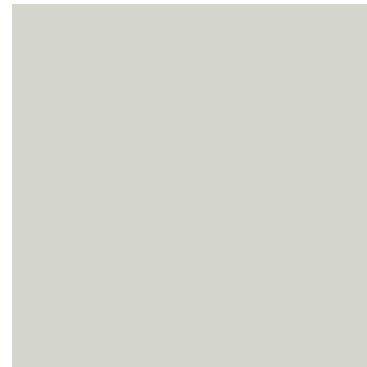
**POLISHED CHROME**  
*Emtek Finish*

## CABINETRY FINISH



**CUSTOM FINISH**  
*Finish: Custom Stain "Twilight"*  
*Species: Plain Sawn Oak*

## ISLAND FINISH



**BENJAMIN MOORE**  
*Grey Owl OC-52*  
*Finish: Semi-gloss*

## STONE SLAB

*Countertop & Backsplash*



**CRYSTAL WHITE MARBLE**  
*3cm, Straight Edge, polished*  
*Finish: Polished*  
*Backsplash Size: Full Height*

# KITCHEN APPLIANCES & PLUMBING

104

## MAIN FAUCET



**BLANCO**  
Culina - Single Hole Faucet w/ Swivel Spout  
Finish: Polished Chrome

## MAIN SINK



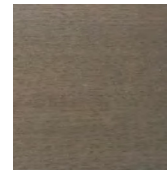
**ECLIPSE**  
Undermount Single Bowl Sink  
Finish: Stainless Steel  
Size: 32" x 19" x 10"

## DISHWASHER



(2) **BOSCH**  
24" 800 Plus Series Dishwasher  
Finish: Panel Overlay

## PANEL OVERLAY



**CUSTOM FINISH**  
Finish: Custom Stain "Twilight"  
Species: Plain Sawn Oak

## MICROWAVE



**WOLF**  
24" E Series Transitional Drop-Down Door Microwave Oven  
Finish: black and stainless steel

## COFFEE MACHINE



**MIELE**  
24" Whole Bean Coffee System, Plumbed  
Finish: clean touch steel

## RANGE HOOD



**WOLF**  
52" Pro Hood Liner (22" depth)  
Finish: Panel Overlay

## RANGE



**WOLF**  
48" Dual Fuel Range with 6 burners + griddle  
Finish: Stainless Steel  
Knobs: Black

## U/C ICE MAKER



**SUB-ZERO**  
15" Undercounter Ice Maker  
Finish: Panel Overlay to match Cabinet Finish

## REFRIGERATOR



**SUB-ZERO**  
(2) 30" Integrated Tall Refrigerator / Freezer  
Finish: Panel Overlay to Match Cabinet Finish

## REFRIGERATOR/DISHWASHER HARDWARE



**EMTEK**  
Keaton Appliance Pull  
18" Pull

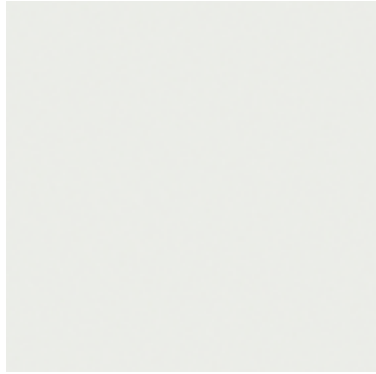


**FINISH**  
Polished Chrome

# PANTRY FINISHES

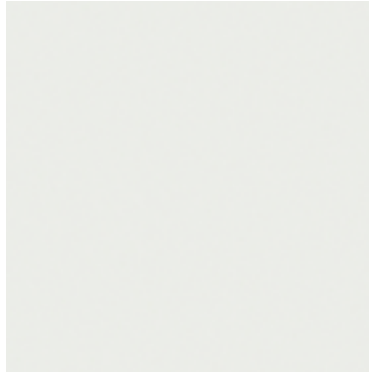
115

## CEILING FINISH



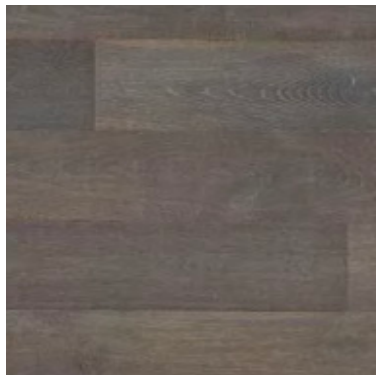
**DECORATOR'S WHITE CC-20**  
*Benjamin Moore*  
*Finish: Flat*

## WALL FINISH



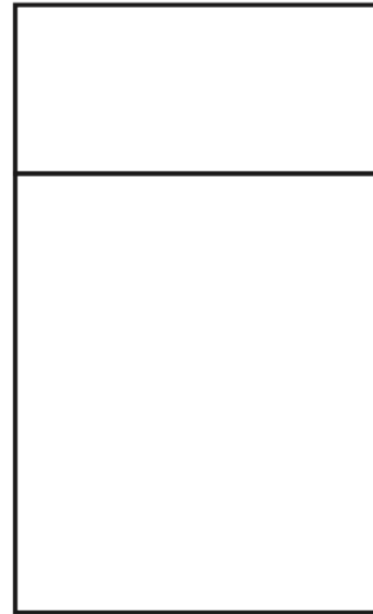
**DECORATOR'S WHITE CC-20**  
*Benjamin Moore*  
*Finish: Eggshell (level 5 smooth finish)*

## HARDWOOD FLOORING



**ARTISTRY - LOFT COLLECTION**  
*Color: Platinum Oak*  
*Species: European Oak*  
*Size: 6" Wide Plank*  
*Finish: UV Oil*

## CABINET & HARDWARE



**PANEL STYLE**  
*Solid Door & Solid Drawer*

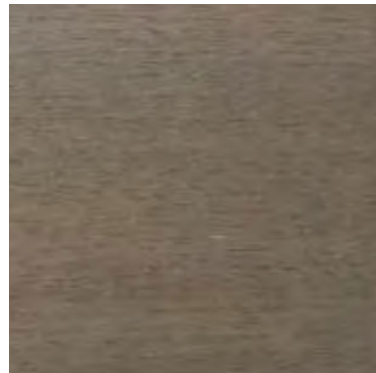


**EMTEK**  
*Cabinet Edge Pull*  
*4" or 6"*



**POLISHED CHROME**  
*Emtek Finish*

## CABINETRY FINISH



**CUSTOM FINISH**  
*Finish: Custom Stain "Twilight"*  
*Species: Plain Sawn Oak*

## STONE SLAB

*Countertop & Backsplash*

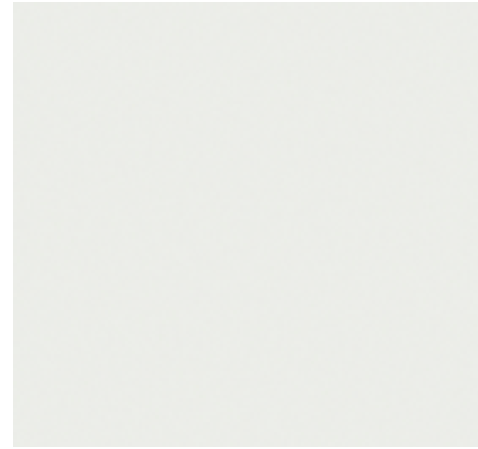


**CRYSTAL WHITE MARBLE**  
*3cm, Straight Edge, polished*  
*Finish: Polished*  
*Backsplash Size: 6"*

# UPPER LEVEL LAUNDRY/MUDROOM FINISHES, PLUMBING & APPLIANCES

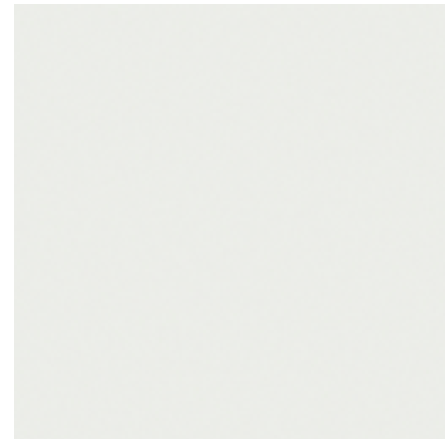
113/114

## CEILING FINISH



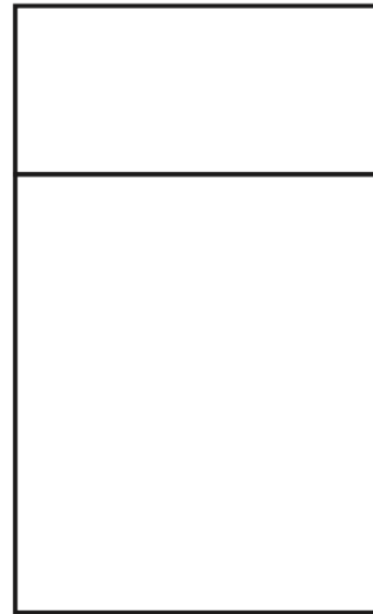
**DECORATOR'S WHITE CC-20**  
Benjamin Moore  
Finish: Flat

## WALL FINISH



**DECORATOR'S WHITE CC-20**  
Benjamin Moore  
Finish: Eggshell (level 5 smooth finish)

## CABINET & HARDWARE



**PANEL STYLE**  
Solid Door & Solid Drawer

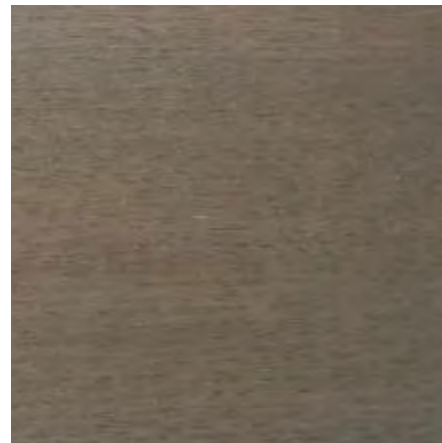


**EMTEK**  
Cabinet Edge Pull  
4" or 6"



**POLISHED CHROME**  
Emtek Finish

## CABINETRY FINISH



**CUSTOM FINISH**  
Finish: Custom Stain "Twilight"  
Species: Plain Sawn Oak

## ACCESSORIES

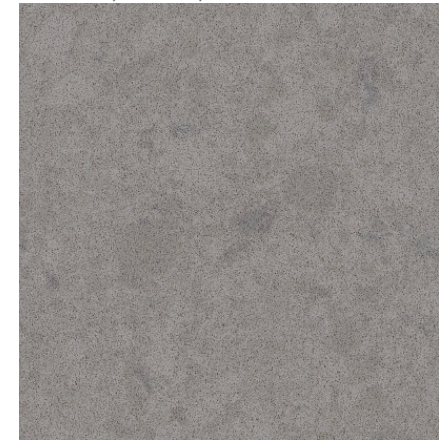
Mudroom ONLY



**DORNBRACHT - TARA SERIES**  
Robe Hook

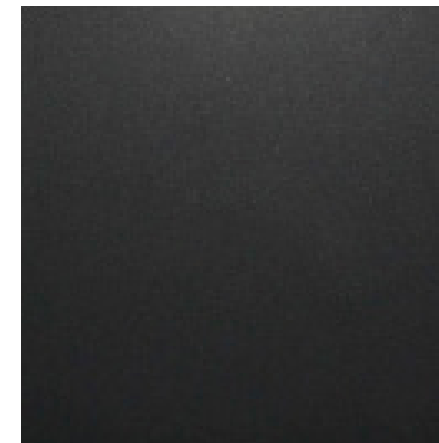
## STONE SLAB

Countertop & Backsplash



**CAESARSTONE QUARTZ, PEBBLE**  
3cm, Straight Edge, polished  
Finish: Honed  
Backsplash Size: 4" Above the Washer & Dryer;  
Continue at Same Level Across all Countertop

## STONE FLOORING



**BLACK ABSOLUTE**  
Flamed Granite  
Size: 16" x 24", brickset, offset 1/3, continue floor pattern  
Base: 3"

## FAUCET



**KWC COLLECTION**  
Luna Pullout Faucet  
Finish: Stainless Steel  
Height: 19"  
Reach: 8"

## SINK



**GALASSIA**  
Undermount Sink  
Color: White  
Size: 24" x 18" x 10"

## APPLIANCES



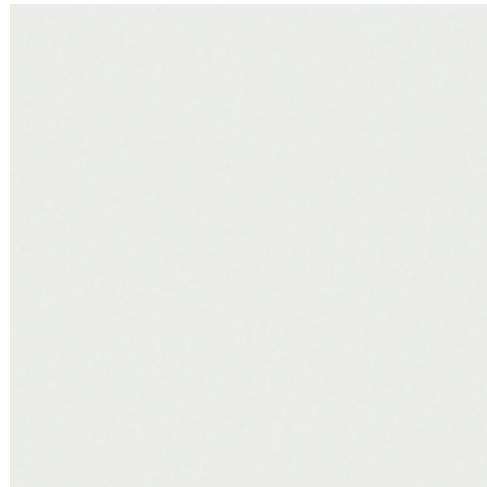
**SAMSUNG**  
4.5 cu ft Front Load Washer with Add-Wash  
Finish: White



**SAMSUNG**  
7.5 cu ft Front Load Electric Dryer  
Finish: White

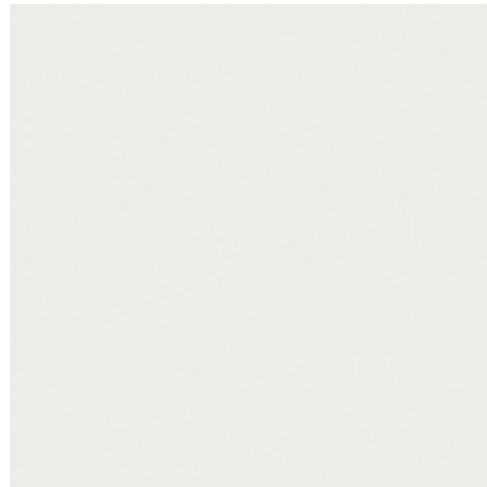


## CEILING FINISH



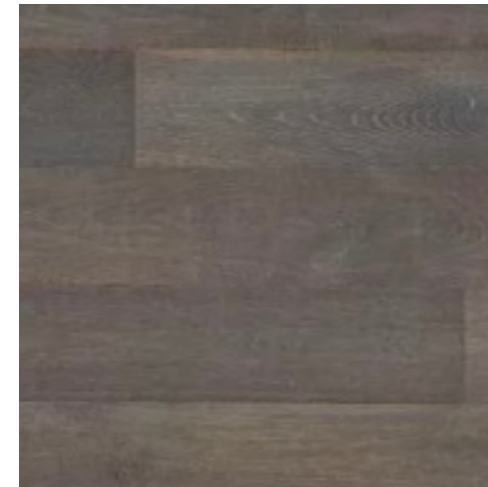
**DECORATOR'S WHITE CC-20**  
*Benjamin Moore*  
*Finish: Flat*

## WALL FINISH



**DECORATOR'S WHITE CC-20**  
*Benjamin Moore*  
*Finish: Eggshell (level 5 smooth finish)*

## HARDWOOD FLOORING

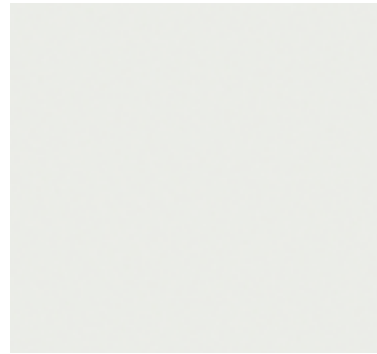


**ARTISTRY - LOFT COLLECTION**  
*Color: Platinum Oak*  
*Species: European Oak*  
*Size: 6" Wide Plank*  
*Finish: UV Oil*

# MASTER BEDROOM

107

## CEILING FINISH



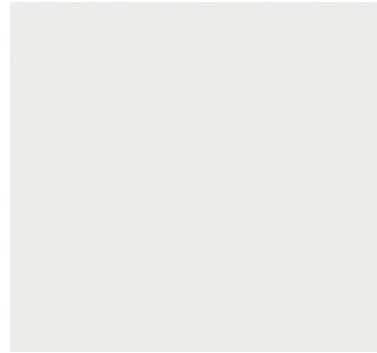
**DECORATOR'S WHITE CC-20**  
Benjamin Moore  
Finish: Flat

## TIMBER



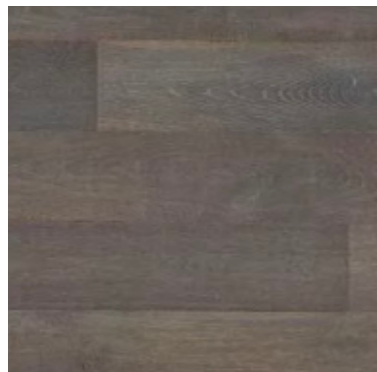
**TIMBER**  
Species: Reclaimed Resawn Douglas Fir  
Finish: River Homestead Grey

## WALL FINISH



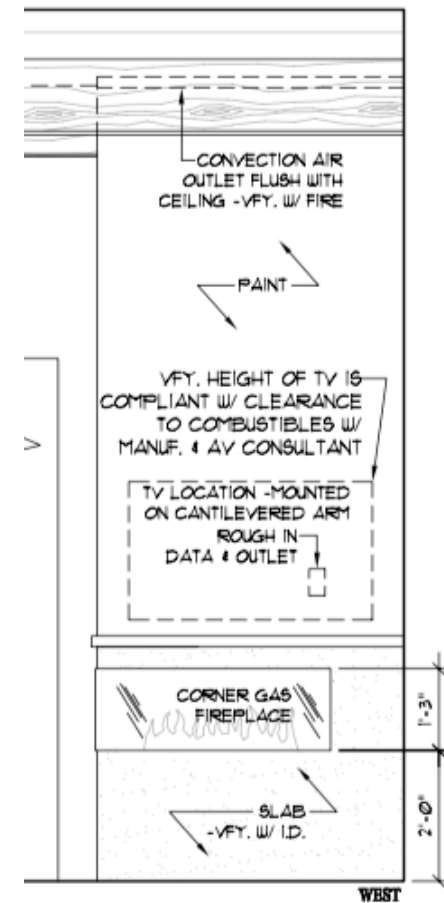
**DECORATOR'S WHITE CC-20**  
Benjamin Moore  
Finish: Eggshell (level 5 smooth finish)

## HARD WOOD FLOORING



**ARTISTRY - LOFT COLLECTION**  
Color: Platinum Oak  
Species: European Oak  
Size: 6" Wide Plank  
Finish: UV Oil

## FIREPLACE ELEVATION



Design Concept Only - Details to be Confirmed by Architectural Elevations and Interior Designer

## FIREPLACE



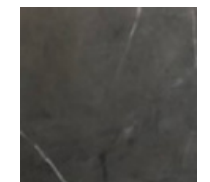
**REGENCY - CHICAGO CORNER FIREPLACE - 40RE**  
Size: 42"  
Metallic Black Non-Reflective Panel  
Driftwood Ceramic Log Set

## FIREPLACE SURROUND



**GRAY BARNBOARD**  
1" x 6/8/10" Random Widths  
Finish: Natural As Is

## FIREPLACE MANTLE

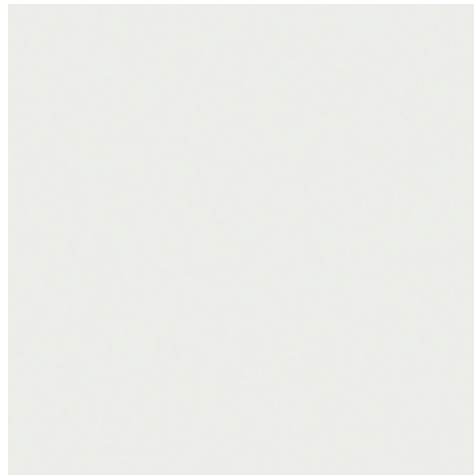


**DA VINCI GRAFITE MARBLE**  
Honed Marble

# MASTER BATHROOM FINISHES

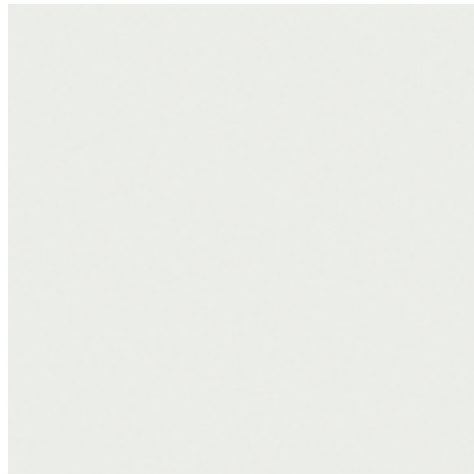
108/109/110

## CEILING FINISH



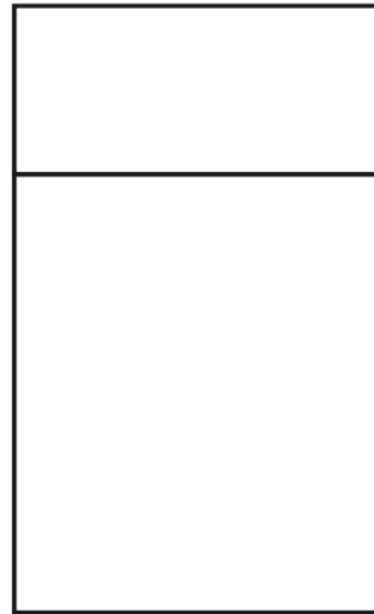
**DECORATOR'S WHITE CC-20**  
Benjamin Moore  
Finish: Flat

## WALL FINISH



**DECORATOR'S WHITE CC-20**  
Benjamin Moore  
Finish: Eggshell (level 5 smooth finish)

## CABINET & HARDWARE



**PANEL STYLE**  
Solid Door & Solid Drawer

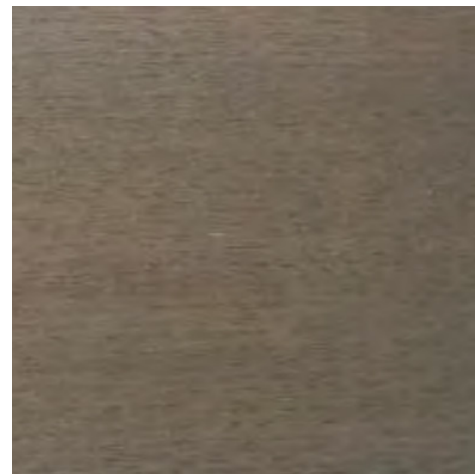


**EMTEK**  
Cabinet Edge Pull  
4" or 6"



**POLISHED CHROME**  
Emtek Finish

## CABINETRY FINISH



**CUSTOM FINISH**  
Finish: Custom Stain "Twilight"  
Species: Plain Sawn Oak

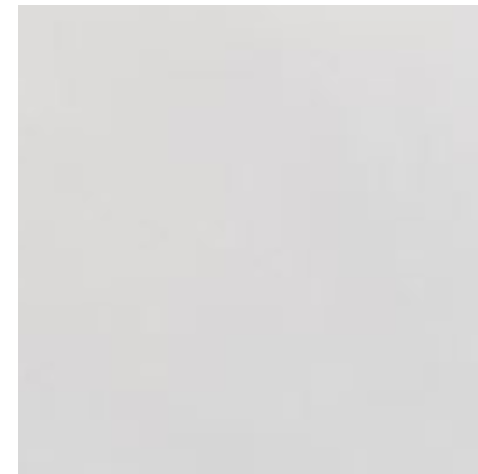
## STONE SLAB

Countertop, Backsplash & Tub Deck & Apron



**CRYSTAL WHITE MARBLE**  
3cm, Straight Edge, polished  
Finish: Polished  
Vanity Backsplash: 6"  
Tub Deck Backsplash: 6"

## STONE FLOORING



**THASSOS MARBLE**  
Finish: Polished  
Size: 12" x 24"  
Pattern: Straight set parallel to vanity  
Base: 3"

## SHOWER TILE

Walls & Ceiling, Niche



**DA VINCI MARBLE, GRAFITE**  
Finish: Honed  
Size: 12" x 24"  
Pattern: Horizontal Brickset, 1/3 Offset

## SHOWER FLOOR



**THASSOS MARBLE**  
Finish: Polished  
Size: 1x2 Mosaic  
Pattern: Parallel with Bench

## SHOWER SLAB

Header, Curb, Jambs, Bench Top & Face (w/ mitered corner),  
Niche Shelf and Base to be Crystal White Marble Honed

# MASTER BATHROOM PLUMBING

108/109/110

## FAUCET



**DORNBRACHT COLLECTION**  
IMO Series Three Hole Deck Mounted Faucet  
Finish: Chrome

## SINK



**KOHLER**  
Verticyl Undermount Sink  
Color: White  
Size: 20"W x 17"D x 3"H

## CEILING-MOUNTED



**DORNBRACHT COLLECTION**  
Universal - Rain Showerhead & Arm  
Finish: Chrome

## HANDSHOWER



**GRAFF**  
Universal Handshower Set  
Finish: Steelnox (Satin Nickel)

## STEAM PACKAGE



**MR. STEAM**

## WALL-MOUNTED



**DORNBRACHT COLLECTION**  
Universal - Wall Mounted Showerhead  
Finish: Chrome

## CONTROLS



**GRAFF**  
Sade Shower Controls  
Finish: Steelnox (Satin Nickel)

## TUB FILLER



**DORNBRACHT COLLECTION**  
IMO Series  
Tub Deck Filler  
Finish: Chrome

## TUB



**ZUMA**  
Center Drain Rectangular Drop-In Tub  
Finish: White  
Size: 72" x 36" x 24"

## TOILET



**TOTO**  
Aquia® IV Toilet - 1.28 GPF & 0.8 GPF  
Color: Cotton (White)

## ACCESSORIES

Dornbracht Hardware



**TARA SERIES TOWEL BAR**  
Size: 18"



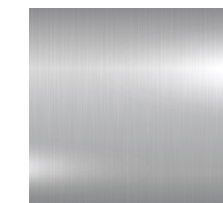
**TARA SERIES ROBE HOOK**



**TARA SERIES TOWEL BAR**  
Size: 24"

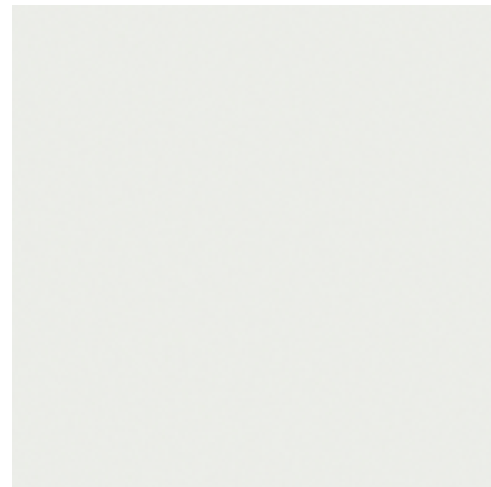


**TARA SERIES TISSUE HOLDER**



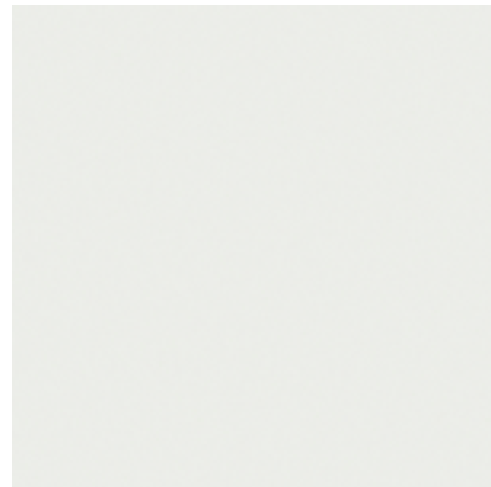
**POLISHED CHROME**  
Dornbracht Hardware Finish

## CEILING FINISH



**DECORATOR'S WHITE CC-20**  
*Benjamin Moore*  
*Finish: Flat*

## WALL FINISH



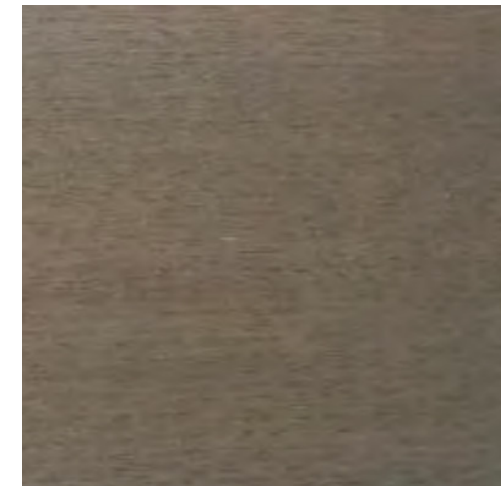
**DECORATOR'S WHITE CC-20**  
*Benjamin Moore*  
*Finish: Eggshell (level 5 smooth finish)*

## CARPET



**UNIQUE CARPETS - HARRISON PARK**  
*Color: 4429 Sandy Beach*  
*100% Wool, tufted*

## CLOSET MILLWORK FINISH

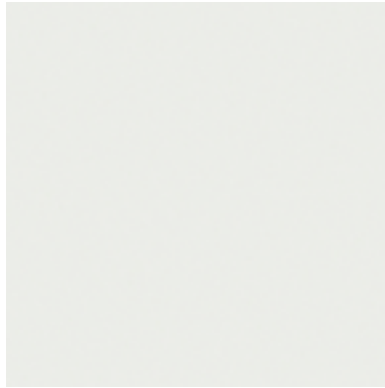


**CUSTOM FINISH**  
*Finish: Custom Stain "Twilight"*  
*Species: Plain Sawn Oak*

# JUNIOR MASTER SUITE

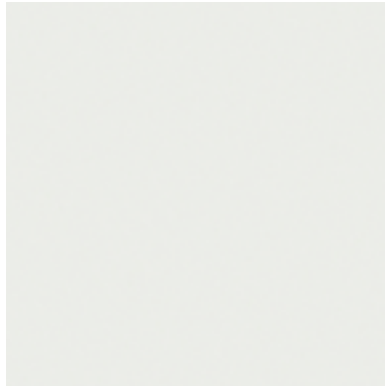
207

## CEILING FINISH



DECORATOR'S WHITE CC-20  
Benjamin Moore  
Finish: Flat

## WALL FINISH



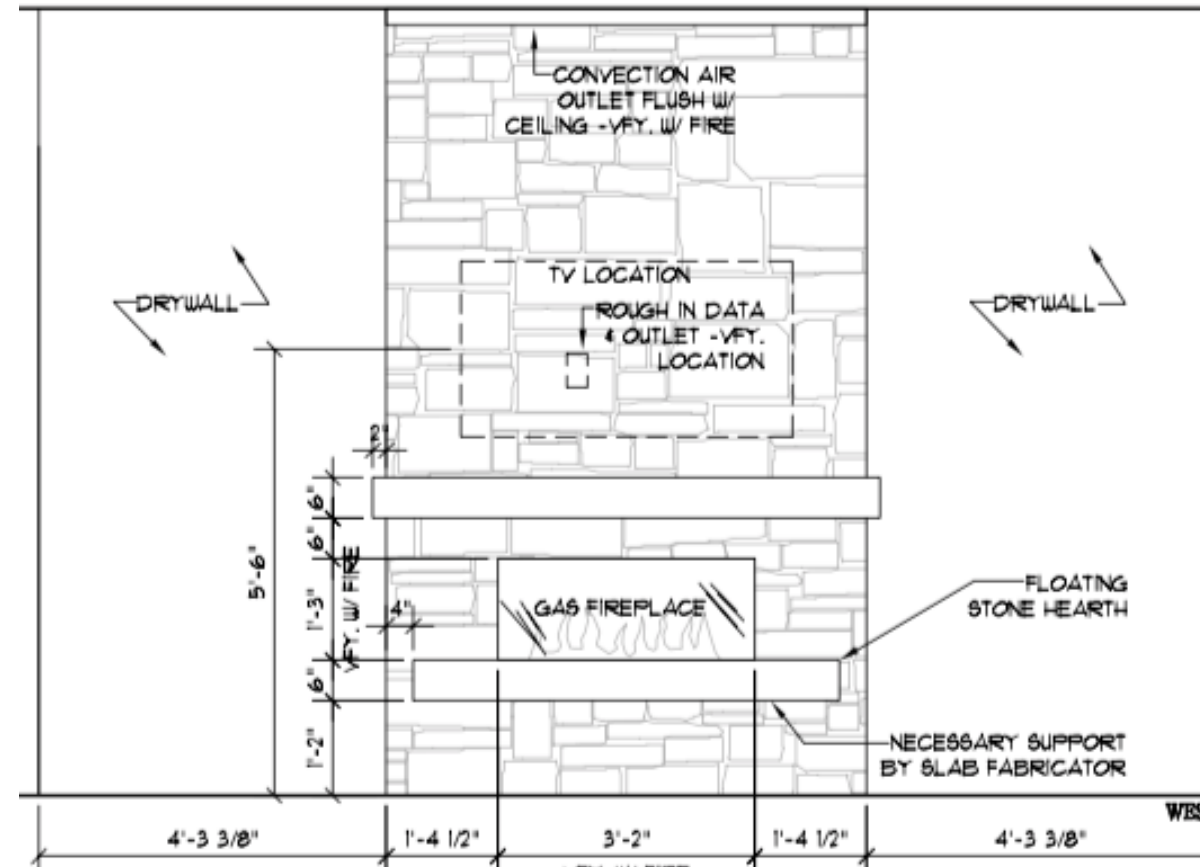
DECORATOR'S WHITE CC-20  
Benjamin Moore  
Finish: Eggshell (level 5 smooth finish)

## CARPET



UNIQUE CARPETS - HARRISON PARK  
Color: 4429 Sandy Beach  
100% Wool, tufted

## FIREPLACE ELEVATION



Design Concept Only - Details to be Confirmed by Architectural Elevations and Interior Designer  
\*Linear vent: 1/2" reveal vent around fireplace mass at ceiling

## FIREPLACE



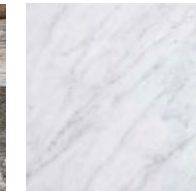
HEAT & GLO PRIMO SERIES, PRIMO48  
Size: 48"  
Black Granite surround and interior  
Driftwood Log Set

## FIREPLACE SURROUND



GRAY BARNBOARD  
1" x 6/8/10" Random Widths  
Finish: Natural As Is

## FIREPLACE MANTLE

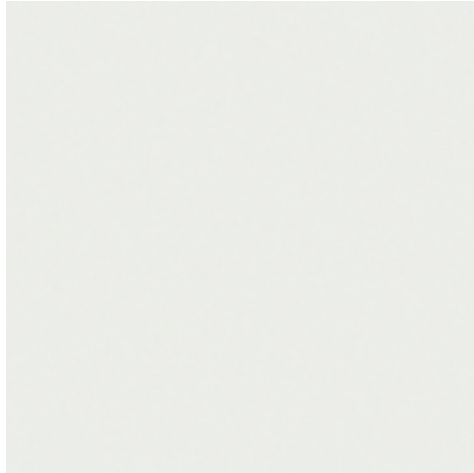


BIANCO CARRARA  
Honed Marble

# JUNIOR MASTER BATHROOM FINISHES

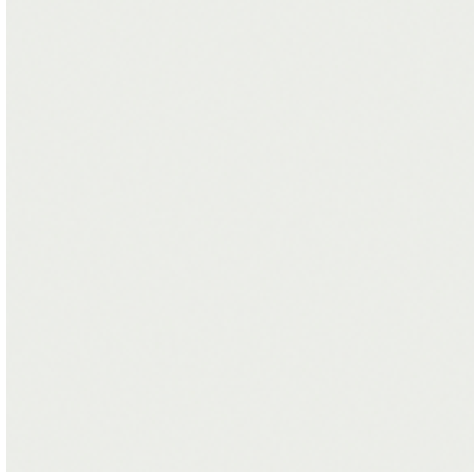
208/209/210

## CEILING FINISH



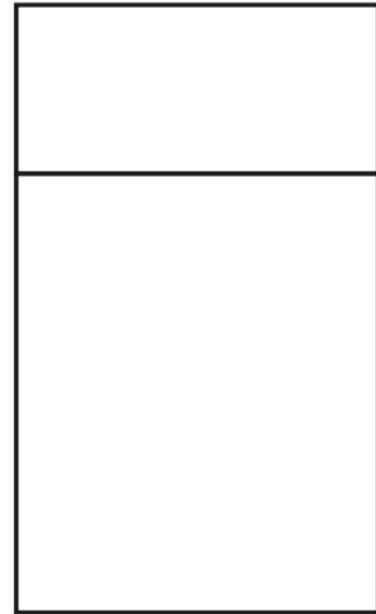
**DECORATOR'S WHITE CC-20**  
Benjamin Moore  
Finish: Flat

## WALL FINISH



**DECORATOR'S WHITE CC-20**  
Benjamin Moore  
Finish: Eggshell (level 5 smooth finish)

## CABINET & HARDWARE



**PANEL STYLE**  
Solid Door & Solid Drawer

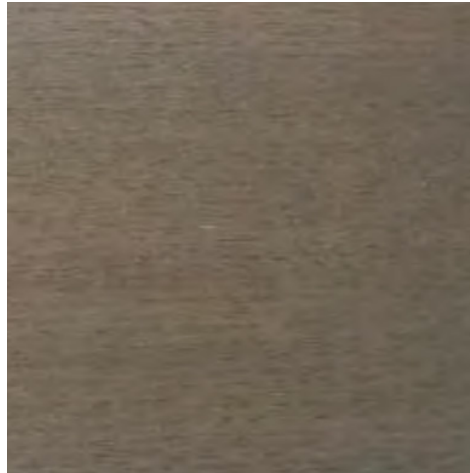


**EMTEK**  
Cabinet Edge Pull  
4" or 6"



**POLISHED CHROME**  
Emtek Finish

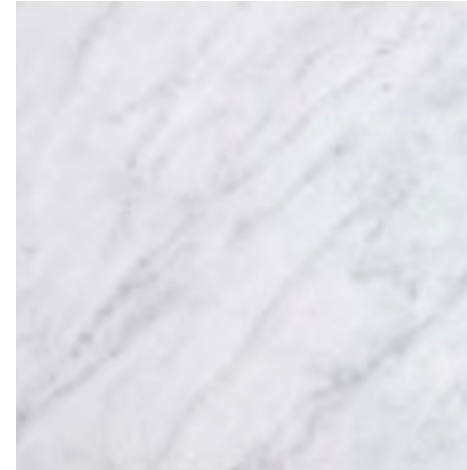
## CABINETRY FINISH



**CUSTOM FINISH**  
Finish: Custom Stain "Twilight"  
Species: Plain Sawn Oak

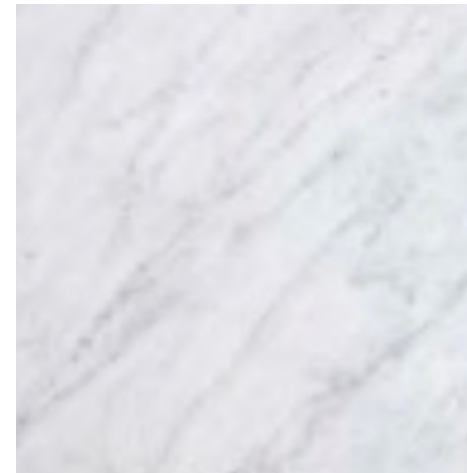
## STONE SLAB

Countertop, Backsplash, Tub Deck & Apron



**BIANCO CARRARA, MARBLE**  
2cm, 4cm Mitered Straight Edge  
Finish: Honed  
Vanity Backsplash: 4"  
Tub Deck Backsplash: 6"

## STONE FLOORING



**BIANCO CARRARA, MARBLE**  
Finish: Honed Marble  
Size: 12" x 24"  
Pattern: Brickset parallel to vanity  
Base: 3"

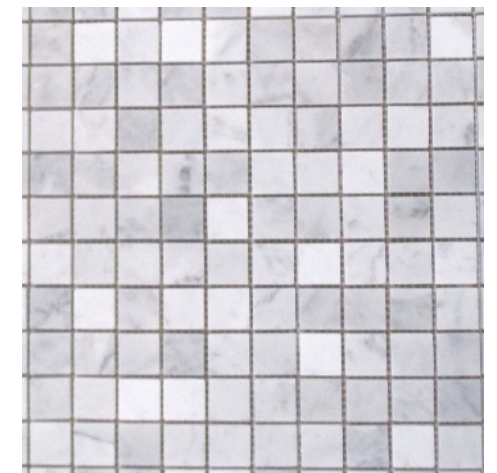
## SHOWER TILE

Walls, Ceiling, Niche



**BIANCO CARRARA, MARBLE**  
Size: 12" x 24"  
Finish: Polished  
Pattern: Horizontal Straight Set

## SHOWER FLOOR



**BIANCO CARRARA, MARBLE**  
Finish: Honed  
Size: 1" Random Mosaic  
Pattern: Mosaic

## SHOWER SLAB

Header, Curb, Jambs, Bench Top & Front (w/ mitered corner), Niche Shelf and Base to be Bianco Carrara Honed Marble Slab.

# JUNIOR MASTER BATHROOM PLUMBING

208/209/210

## FAUCET



**GRAFF**  
Terra Three Hole Deck Mounted Faucet  
Finish: Chrome

## SINK



**KOHLER**  
Verticyl Undermount Sink  
Size: 20"W x 17"D x 3"H  
Color: White

## CEILING-MOUNTED



**GRAFF - TERRA COLLECTION**  
Universal - Rain Showerhead & Arm  
Finish: Chrome

## WALL-MOUNTED



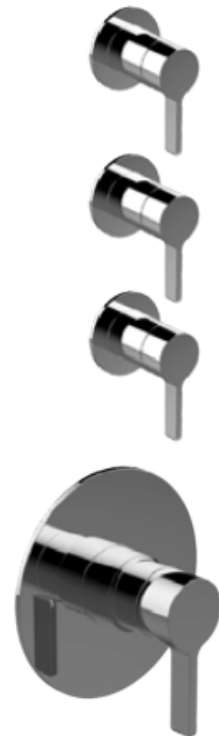
**GRAFF - TERRA COLLECTION**  
Universal - Wall-Mounted Shower Head  
Finish: Chrome

## HANDSHOWER KIT



**GRAFF - TERRA COLLECTION**  
Universal Handshower Set  
Finish: Chrome

## CONTROLS



**GRAFF - TERRA COLLECTION**  
Shower Controls  
Finish: Chrome

## TOILET



**TOTO**  
Aqua® IV Toilet - 1.28 GPF & 0.8 GPF  
Color: Cotton (White)

## ACCESSORIES

Dornbracht Hardware



**TARA SERIES TOWEL BAR**  
Size: 18"



**TARA SERIES ROBE HOOK**



**TARA SERIES TOWEL BAR**  
Size: 24"



**TARA SERIES TISSUE HOLDER**



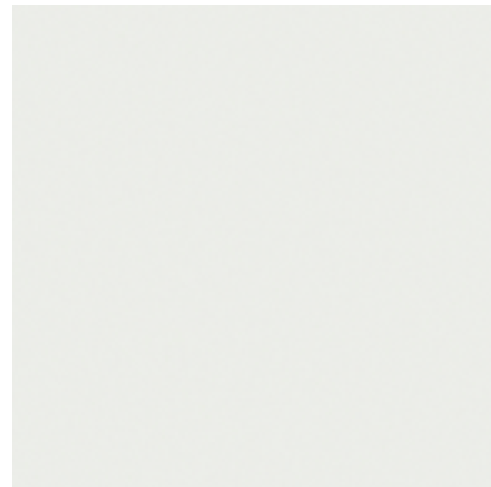
**POLISHED CHROME**  
Dornbracht Hardware Finish



# JUNIOR MASTER WIC FINISHES

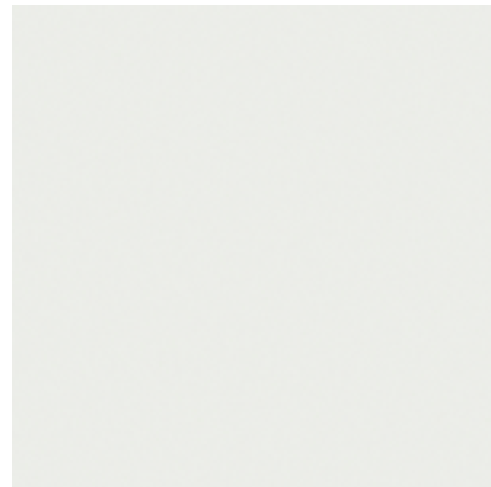
211

## CEILING FINISH



**DECORATOR'S WHITE CC-20**  
*Benjamin Moore*  
*Finish: Flat*

## WALL FINISH



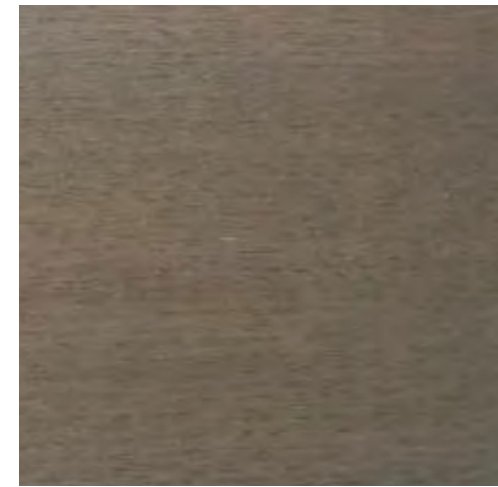
**DECORATOR'S WHITE CC-20**  
*Benjamin Moore*  
*Finish: Eggshell (level 5 smooth finish)*

## CARPET



**UNIQUE CARPETS - HARRISON PARK**  
*Color: 4429 SANDY BEACH*  
*100% Wool, tufted*

## CLOSET MILLWORK FINISH

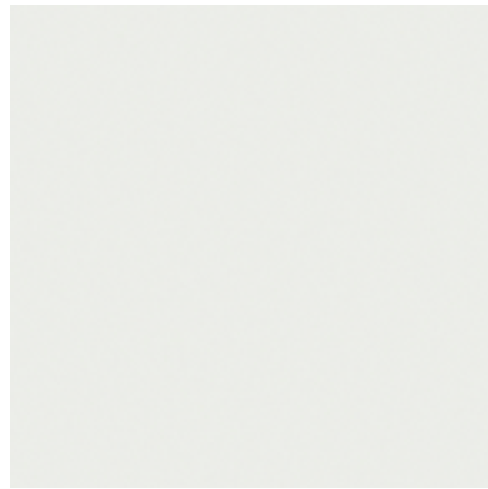


**CUSTOM FINISH**  
*Finish: Custom Stain "Twilight"*  
*Species: Plain Sawn Oak*

# SITTING AREA

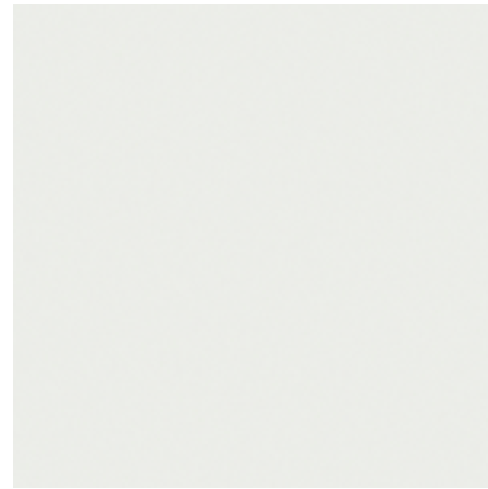
202

## CEILING FINISH



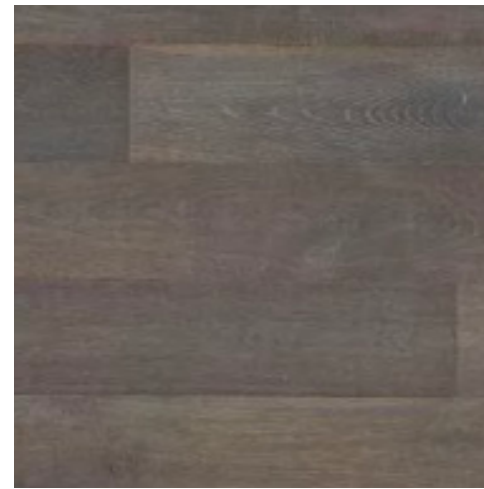
**DECORATOR'S WHITE CC-20**  
*Benjamin Moore*  
*Finish: Flat*

## WALL FINISH



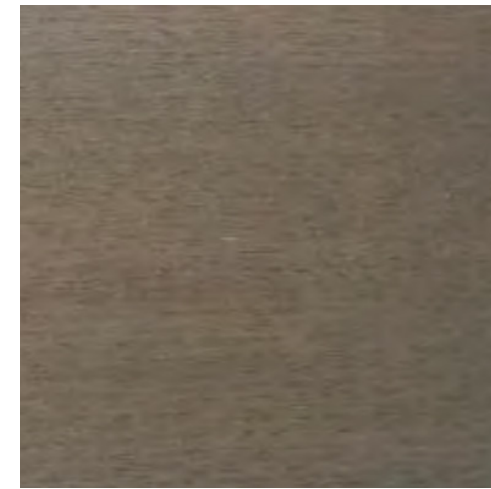
**DECORATOR'S WHITE CC-20**  
*Benjamin Moore*  
*Finish: Eggshell (level 5 smooth finish)*

## HARDWOOD FLOORING



**ARTISTRY - LOFT COLLECTION**  
*Color: Platinum Oak*  
*Species: European Oak*  
*Size: 6" Wide Plank*  
*Finish: UV Oil*

## BUILT-IN FINISH

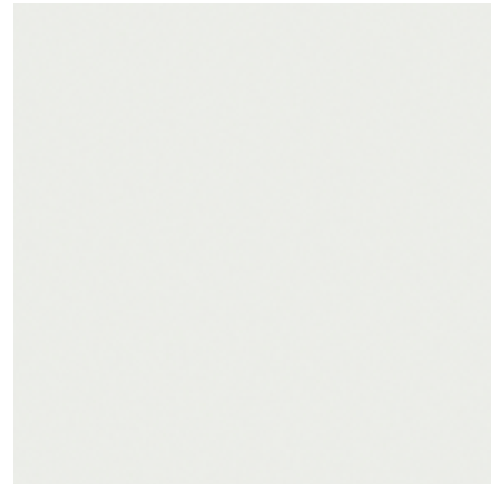


**CUSTOM FINISH**  
*Finish: Custom Stain "Twilight"*  
*Species: Plain Sawn Oak*

# UPPER LEVEL GUEST SUITE / WIC FINISHES

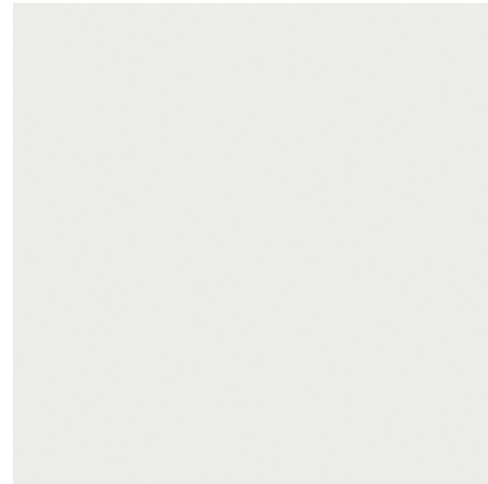
203/206

## CEILING FINISH



**DECORATOR'S WHITE CC-20**  
*Benjamin Moore*  
*Finish: Flat*

## WALL FINISH



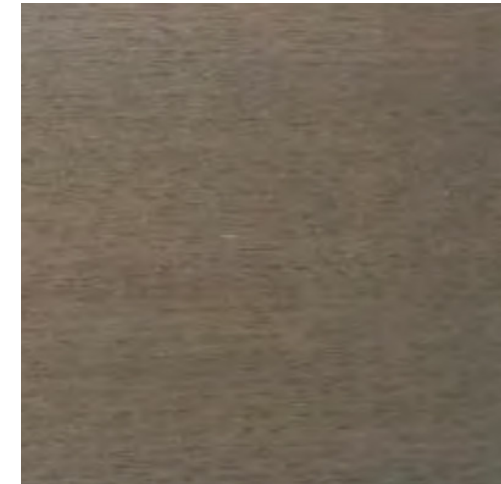
**DECORATOR'S WHITE CC-20**  
*Benjamin Moore*  
*Finish: Eggshell (level 5 smooth finish)*

## CARPET



**UNIQUE CARPETS - HARRISON PARK**  
*Color: 4429 SANDY BEACH*  
*100% Wool, tufted*

## CLOSET MILLWORK FINISH

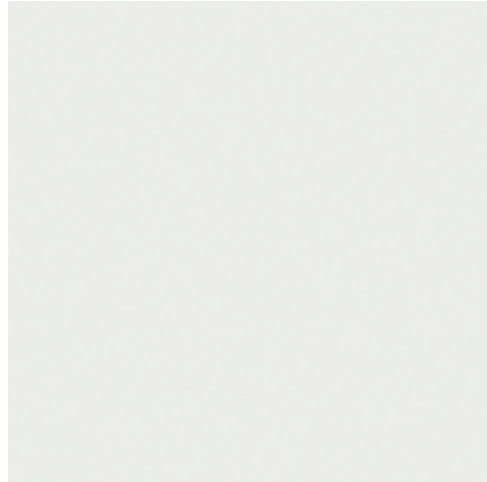


**CUSTOM FINISH**  
*Finish: Custom Stain "Twilight"*  
*Species: Plain Sawn Oak*

# UPPER LEVEL GUEST SUITE BATHROOM FINISHES

204/205

## CEILING FINISH



**DECORATOR'S WHITE CC-20**  
*Benjamin Moore*  
*Finish: Flat*

## CABINETRY & HARDWARE



**PANEL STYLE**  
*Solid Door & Solid Drawer*



**EMTEK**  
*Cabinet Edge Pull*  
*4" or 6"*



**POLISHED CHROME**  
*Emtek Finish*

## STONE SLAB

*Countertop, Backsplash, & Niche Shelf and Base*



**METROPOLIS DARK GREY QUARTZ**  
*3cm, straight edge*  
*Finish: Honed*  
*Backsplash: 4"*

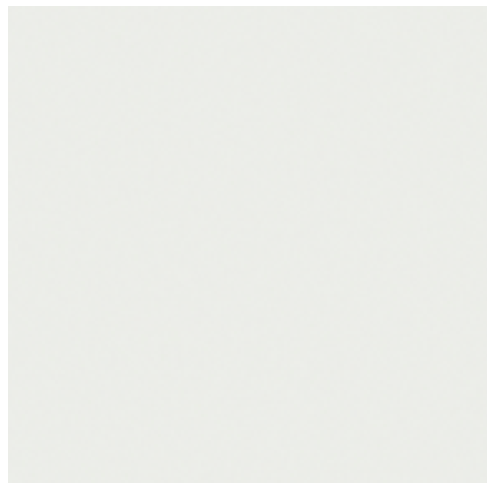
## SHOWER TILE

*Walls & Ceiling, Bench Face & Niche*



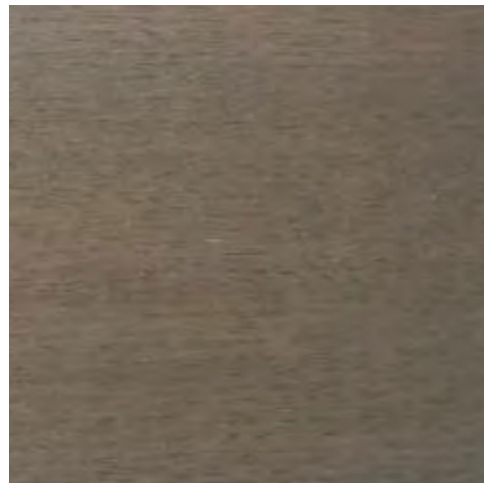
**BASTONI BIANCO MARBLE**  
*Finish: Polished*  
*Size: 24" x 48"*  
*Pattern: Horizontal Brickset, 1/3 Offset*

## WALL FINISH



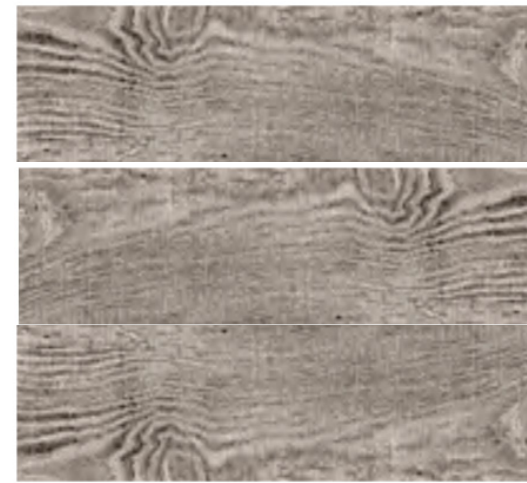
**DECORATOR'S WHITE CC-20**  
*Benjamin Moore*  
*Finish: Eggshell (level 5 smooth finish)*

## CABINETRY FINISH



**CUSTOM FINISH**  
*Finish: Custom Stain "Twilight"*  
*Species: Plain Sawn Oak*

## STONE FLOORING



**STATALE VAPOR**  
*Porcelain Tile*  
*Size: 6" x 47" & 8" x 47"*  
*Pattern: Random set/Horizontal*

# UPPER LEVEL GUEST SUITE BATHROOM PLUMBING

204/205

## FAUCET



**GRAFF**  
M.E. Series, three hole deck mounted faucet  
Finish: Chrome

## SINK



**KOHLER**  
Ladena Undermount Sink  
Color: White  
Size 21" x 14" x 5"

## SHOWERHEAD



**GRAFF**  
Universal Wall Mounted Shower  
Finish: Chrome

## HANDSHOWER



**GRAFF**  
Universal Shower Controls  
Finish: Chrome

## TUB FILLER



**GRAFF**  
M.E. Series  
Wall-Mounted Tub Filler  
Finish: Polished Chrome

## TUB



**ZUMA**  
End Drain - Rectangular Drop-In Tub  
Finish: White  
Size: 72" x 40" x 22"

## TOILET



**TOTO**  
Aquia® IV Toilet - 1.28 GPF & 0.8 GPF  
Color: Cotton (White)

## ACCESSORIES

Dornbracht Hardware



**TARA SERIES TOWEL BAR**  
Size: 18"



**TARA SERIES ROBE HOOK**



**TARA SERIES TOWEL BAR**  
Size: 24"



**TARA SERIES TISSUE HOLDER**

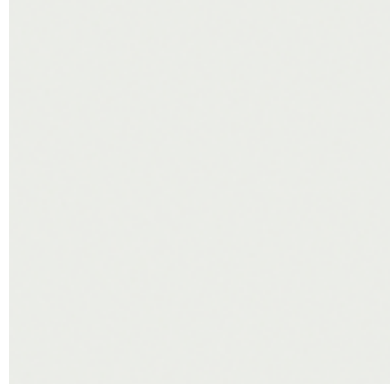


**POLISHED CHROME**  
Dornbracht Hardware Finish

# WET BAR, GAME ROOM, & REC ROOM FINISHES, PLUMBING & APPLIANCES

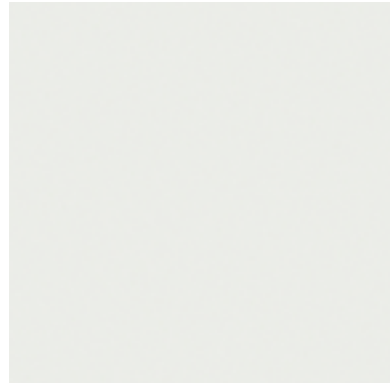
002/003/004

## CEILING FINISH



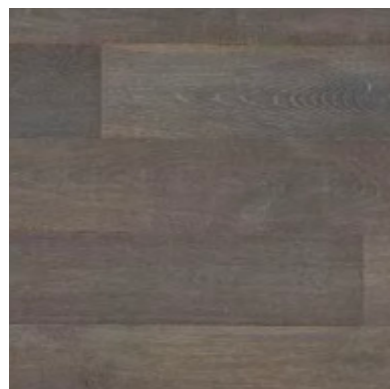
**DECORATOR'S WHITE CC-20**  
Benjamin Moore  
Finish: Flat

## WALL FINISH



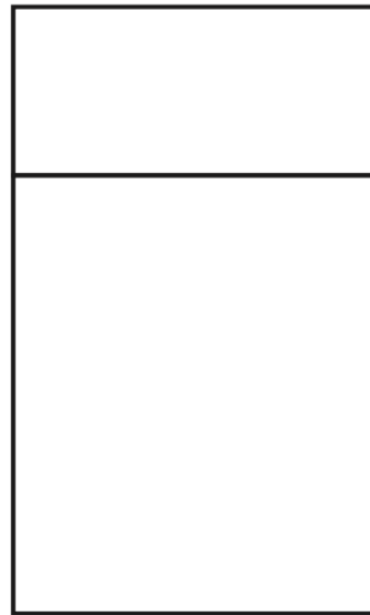
**DECORATOR'S WHITE CC-20**  
Benjamin Moore  
Finish: Eggshell (level 5 smooth finish)

## HARDWOOD FLOORING



**ARTISTRY - LOFT COLLECTION**  
Color: Platinum Oak  
Species: European Oak  
Size: 6" Wide Plank  
Finish: UV Oil

## CABINET & HARDWARE



**PANEL STYLE**  
Solid Door & Solid Drawer

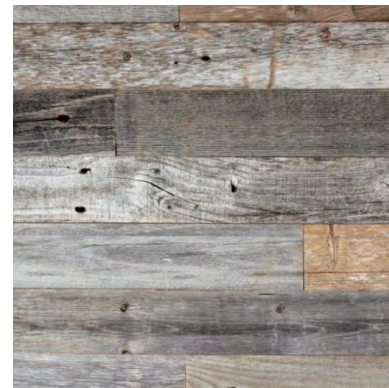


**EMTEK**  
Cabinet Edge Pull  
4" or 6"



**POLISHED CHROME**  
Emtek Finish

## CABINETRY FINISH



**GRAY BARNBOARD**  
Finish: Natural As Is

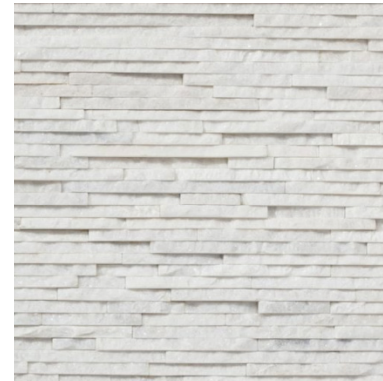
## STONE SLAB



**CRYSTAL WHITE, MARBLE**  
3cm, straight edge  
Finish: Polished

## WET BAR BACKSPLASH

Full Height



**REALSTONE SYSTEMS**  
Thin Arctic White Shadowstone Panel  
Size: 6" x 24"  
Splitface Quartzite

## FAUCET



**DORNBRACHT**  
Tara Ultra Prep Faucet  
Finish: Polished Chrome

## SINK



**ECLIPSE**  
Stainless steel prep sink  
Finish: Stainless Steel  
Size: 19" x 19" x 10"

## U/C REFRIGERATOR

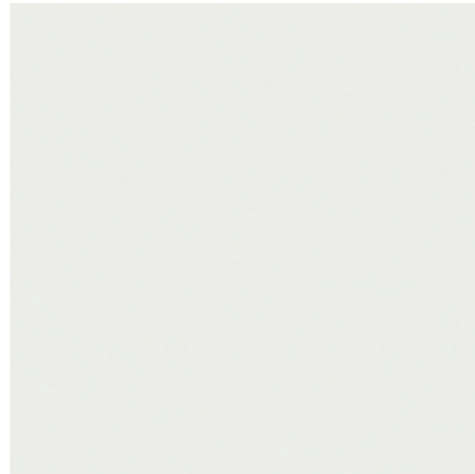


**SUB-ZERO**  
24" Undercounter Beverage Refrigerator  
Finish: Panel Overlay to match Cabinet  
Finish

# LOWER LEVEL LAUNDRY FINISHES, PLUMBING & APPLIANCES

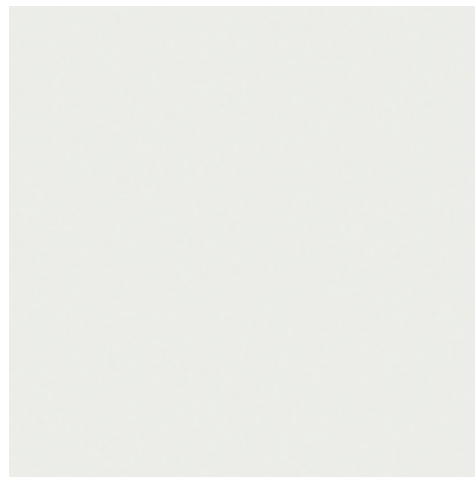
024

## CEILING FINISH



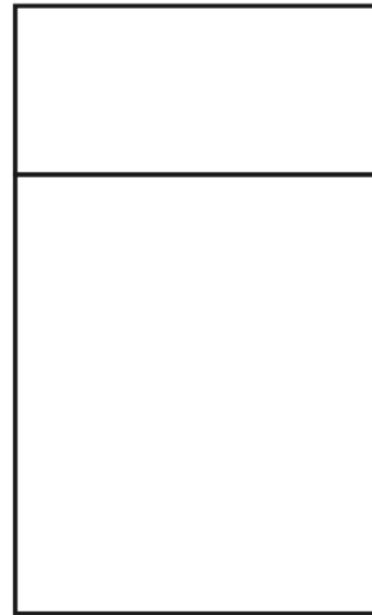
**DECORATOR'S WHITE CC-20**  
Benjamin Moore  
Finish: Flat

## WALL FINISH



**DECORATOR'S WHITE CC-20**  
Benjamin Moore  
Finish: Eggshell (level 5 smooth finish)

## CABINET & HARDWARE



**PANEL STYLE**  
Solid Door & Solid Drawer

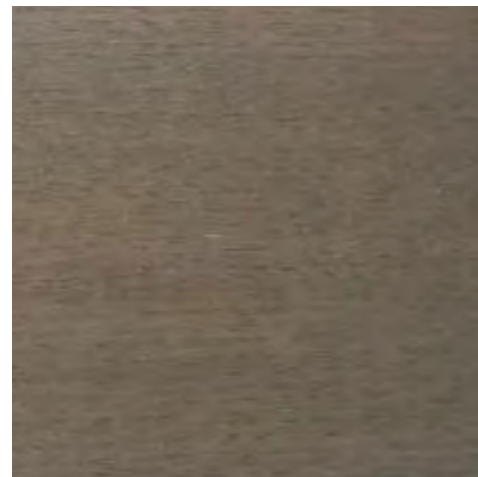


**EMTEK**  
Cabinet Edge Pull  
4" or 6"



**POLISHED CHROME**  
Emtek Finish

## CABINETRY FINISH



**CUSTOM FINISH**  
Finish: Custom Stain "Twilight"  
Species: Plain Sawn Oak

## STONE SLAB

Countertop & Backsplash



**CAESARSTONE QUARTZ, PEBBLE**  
3cm, Straight Edge, polished  
Finish: Honed  
Backsplash Size: 4" Above the Washer & Dryer;  
Continue at Same Level Across all Countertop

## STONE FLOORING



**COLONIAL WHITE**  
Finish: Honed  
Size: 12" x 24", brickset, offset 1/3, parallel to sink  
Base: 3"

## FAUCET



**KWC COLLECTION**  
Luna Pullout Faucet  
Finish: Stainless Steel  
Height: 19"  
Reach: 8"

## SINK



**GALASSIA**  
Undermount Sink  
Color: White  
Size: 24" x 18" x 10"

## APPLIANCES



**SAMSUNG**  
4.5 cu ft Front Load Washer with Add-Wash  
Finish: White



**SAMSUNG**  
7.5 cu ft Front Load Electric Dryer  
Finish: White

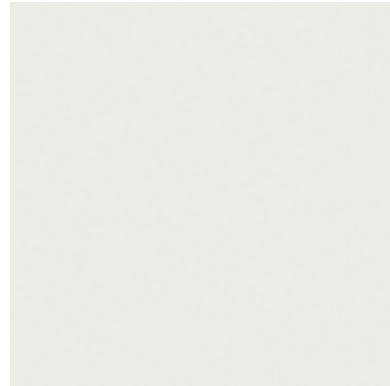
LOT 722

2019 | Page 31

# LOWER LEVEL POWDER ROOM FINISHES

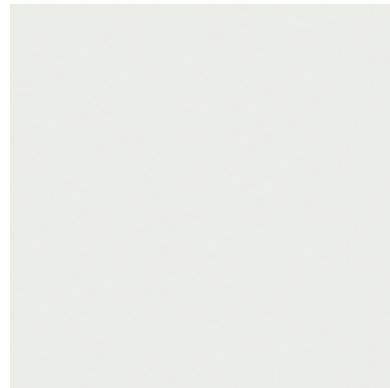
005

## CEILING FINISH



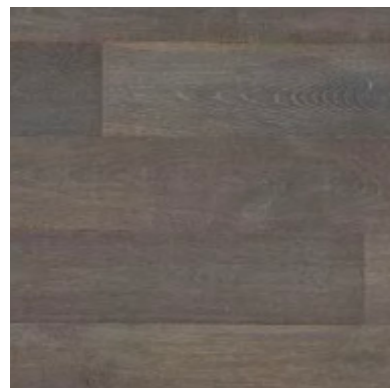
**DECORATOR'S WHITE CC-20**  
Benjamin Moore  
Finish: Flat

## WALL FINISH



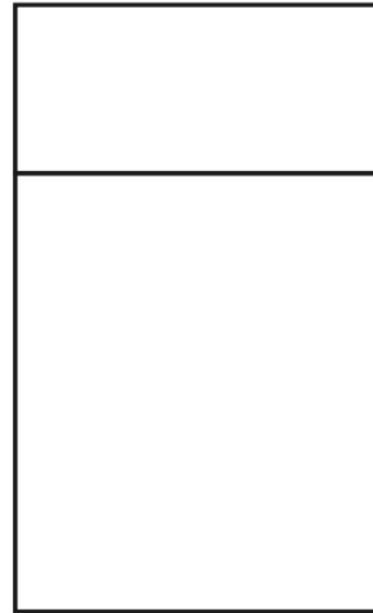
**DECORATOR'S WHITE CC-20**  
Benjamin Moore  
Finish: Eggshell (level 5 smooth finish)

## HARDWOOD FLOORING



**ARTISTRY - LOFT COLLECTION**  
Color: Platinum Oak  
Species: European Oak  
Size: 6" Wide Plank  
Finish: UV Oil

## CABINET & HARDWARE



**PANEL STYLE**  
Solid Door & Solid Drawer

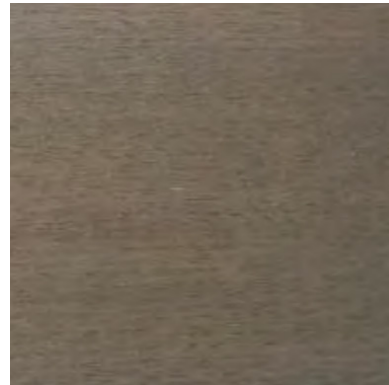


**EMTEK**  
Cabinet Edge Pull  
4" or 6"



**POLISHED CHROME**  
Emtek Finish

## CABINETRY FINISH



**CUSTOM FINISH**  
Finish: Custom Stain "Twilight"  
Species: Plain Sawn Oak

## ACCESSORIES

Dornbracht Hardware



**TARA SERIES TOWEL BAR**  
Size: 18"



**TARA SERIES TISSUE HOLDER**



**POLISHED CHROME**  
Dornbracht Hardware Finish

## STONE SLAB

Countertop & Backsplash



**CAESARSTONE QUARTZ, PEBBLE**  
3cm, Straight Edge  
Finish: Honed  
Backsplash: 4"

## FAUCET



**GRAFF**  
M.E. Series, three hole deck mounted faucet  
Finish: Chrome

## SINK



**KOHLER**  
Ladena Undermount Sink  
Color: White  
Size 21" x 14" x 5"

## TOILET



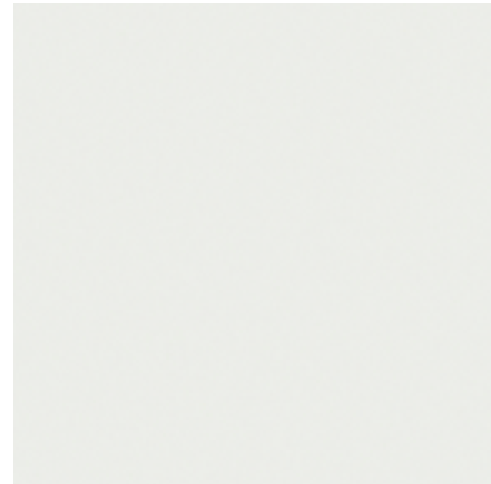
**TOTO**  
Aquia® IV Toilet - 1.28 GPF & 0.8 GPF  
Color: Cotton (White)



# LOWER LEVEL BUNK ROOM/WIC FINISHES

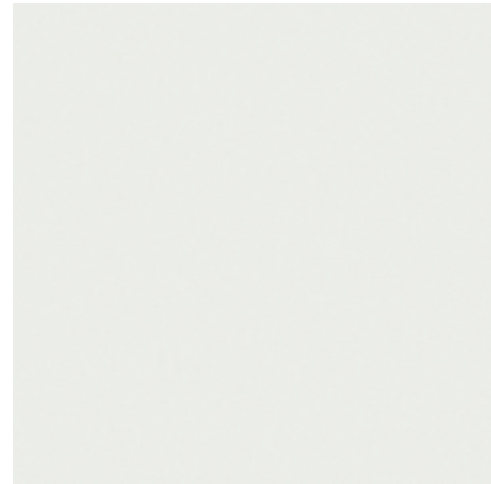
019/023

## CEILING FINISH



**DECORATOR'S WHITE CC-20**  
*Benjamin Moore*  
*Finish: Flat*

## WALL FINISH



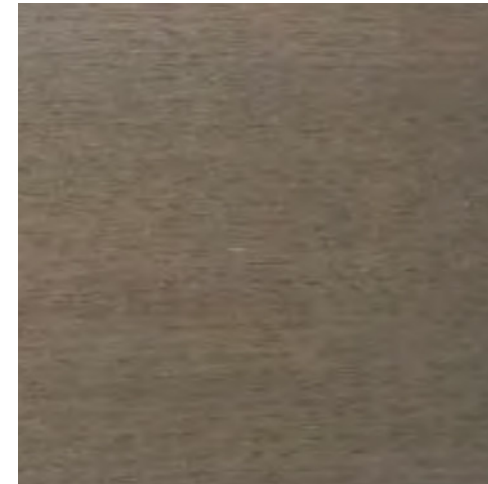
**DECORATOR'S WHITE CC-20**  
*Benjamin Moore*  
*Finish: Eggshell (level 5 smooth finish)*

## CARPET



**UNIQUE CARPETS - HARRISON PARK**  
*Color: 4429 SANDY BEACH*  
*100% Wool, tufted*

## CLOSET MILLWORK FINISH

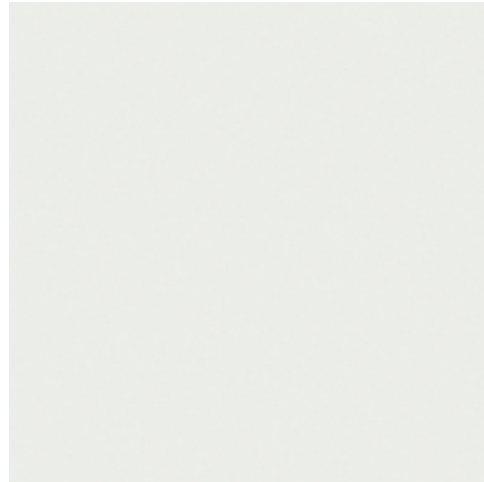


**CUSTOM FINISH**  
*Finish: Custom Stain "Twilight"*  
*Species: Plain Sawn Oak*

# LOWER LEVEL BUNK BATHROOM FINISHES

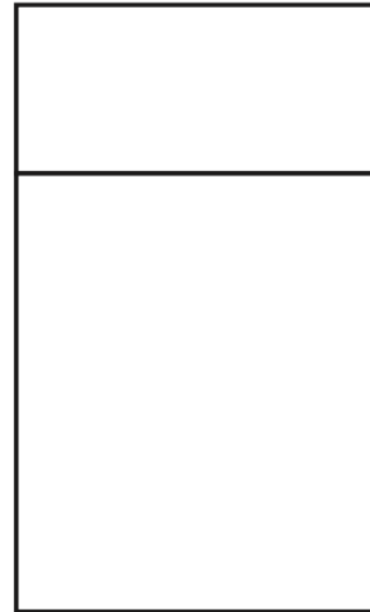
020/021/022

## CEILING FINISH



**DECORATOR'S WHITE CC-20**  
Benjamin Moore  
Finish: Flat

## CABINET & HARDWARE



**PANEL STYLE**  
Solid Door & Solid Drawer



**EMTEK**  
Cabinet Edge Pull  
4" or 6"



**POLISHED CHROME**  
Emtek Finish

## STONE SLAB

Countertop, Backsplash, Niche Shelf & Base, Bench Top & Face



**METROPOLIS DARK GREY QUARTZ**  
3cm, straight edge  
Finish: Honed  
Backsplash: Full Height

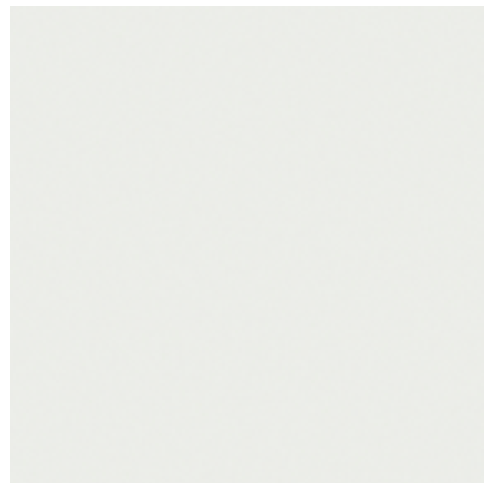
## SHOWER TILE

Walls & Ceiling & Niche



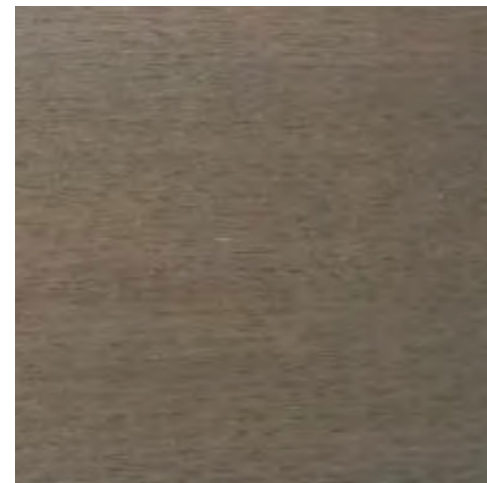
**RICHARDS & STERLING, CRAYON GRIGIO**  
Finish: Glossy  
Size: 3" x 12" subway tile  
Pattern: Horizontal Brickset, 1/3 Offset  
\*\*Dark grout to match Metro Dark Grey

## WALL FINISH



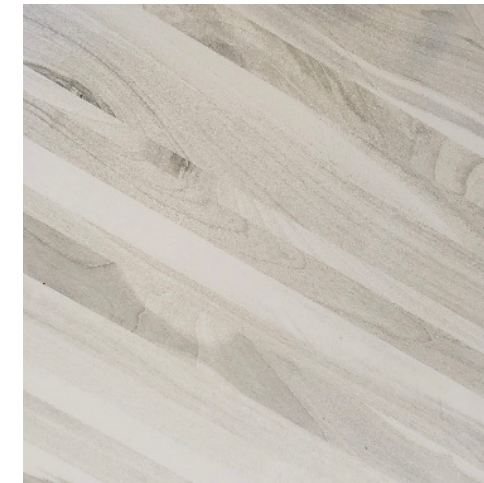
**DECORATOR'S WHITE CC-20**  
Benjamin Moore  
Finish: Eggshell (level 5 smooth finish)

## CABINETRY FINISH



**CUSTOM FINISH**  
Finish: Custom Stain "Twilight"  
Species: Plain Sawn Oak

## STONE FLOORING



**ARTISTIC TILE, KAURI DIAGONAL WHITE**  
Finish: Honed  
Size: 24" x 48"  
Pattern: Random Set/Parallel to Vanity  
Base: 3"

# LOWER LEVEL BUNK ROOM BATHROOM PLUMBING

020/021/022

## FAUCET



**GRAFF**  
M.E. single hole deck-mounted faucet  
Finish: Chrome

## SINK



**NATIVE TRAILS**  
Nativestone Trough Top Mount Sink  
Color: Ash  
Size 48" x 19" x 5"

## SHOWERHEAD



**GRAFF**  
Universal Wall Mounted Shower  
Finish: Chrome

## HANDSHOWER



**GRAFF**  
Universal Shower Controls  
Finish: Chrome

## SHOWER CONTROLS



**GRAFF**  
M.E. Shower Controls  
Finish: Chrome

## TUB FILLER



**GRAFF**  
M.E. Series  
Wall-Mounted Tub Filler  
Finish: Polished Chrome

## TUB



**ZUMA**  
End Drain - Rectangular Drop-In Tub  
Finish: White  
Size: 72" x 40" x 22"

## TOILET



**TOTO**  
Aquia® IV Toilet - 1.28 GPF & 0.8 GPF  
Color: Cotton (White)

## ACCESSORIES

Dornbracht Hardware



**TARA SERIES TOWEL BAR**  
Size: 18"



**TARA SERIES ROBE HOOK**



**TARA SERIES TOWEL BAR**  
Size: 24"



**TARA SERIES TISSUE HOLDER**

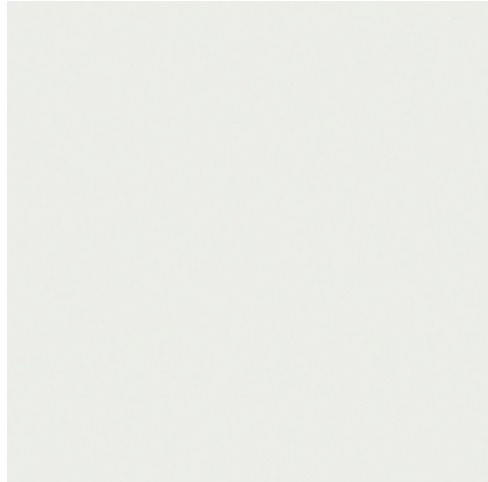


**POLISHED CHROME**  
Dornbracht Hardware Finish

# LOWER LEVEL GUEST SUITE #1 ROOM/WIC FINISHES

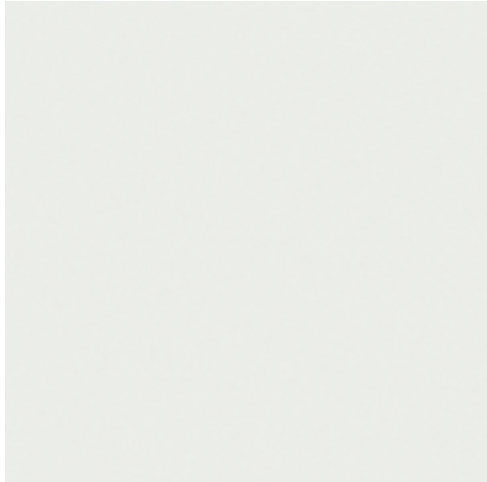
015/018

## CEILING FINISH



**DECORATOR'S WHITE CC-20**  
*Benjamin Moore*  
*Finish: Flat*

## WALL FINISH



**DECORATOR'S WHITE CC-20**  
*Benjamin Moore*  
*Finish: Eggshell (level 5 smooth finish)*

## CARPET



**UNIQUE CARPETS - HARRISON PARK**  
*Color: 4429 SANDY BEACH*  
*100% Wool, tufted*

## CLOSET MILLWORK FINISH

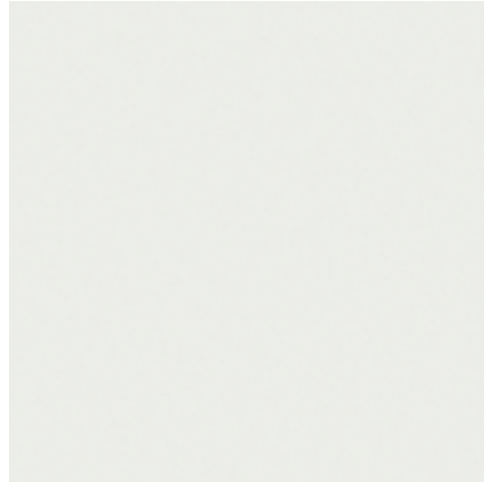


**CUSTOM FINISH**  
*Finish: Custom Stain "Twilight"*  
*Species: Plain Sawn Oak*

# LOWER LEVEL GUEST SUITE #1 BATHROOM FINISHES

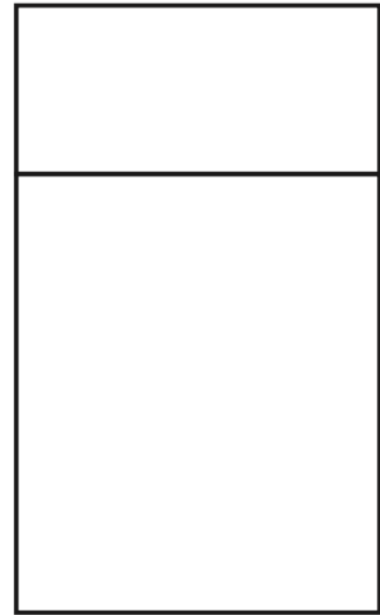
016/017

## CEILING FINISH



**DECORATOR'S WHITE CC-20**  
Benjamin Moore  
Finish: Flat

## CABINET & HARDWARE



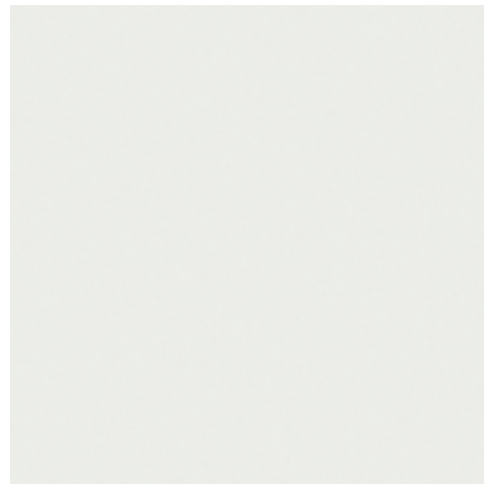
**EMTEK**  
Cabinet Edge Pull  
4" or 6"



**POLISHED CHROME**  
Emtek Finish

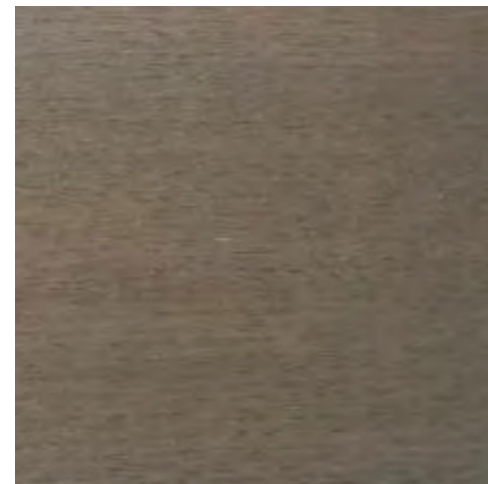
**PANEL STYLE**  
Solid Door & Solid Drawer

## WALL FINISH



**DECORATOR'S WHITE CC-20**  
Benjamin Moore  
Finish: Eggshell (level 5 smooth finish)

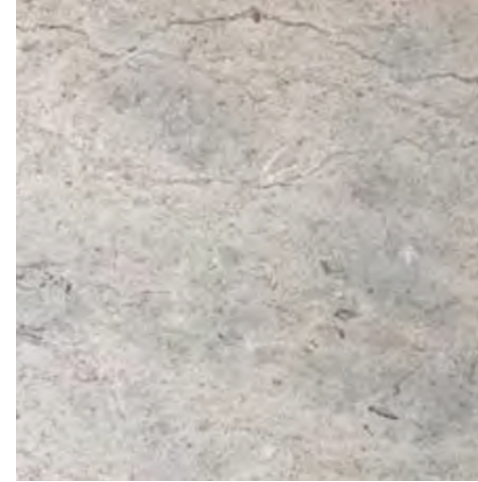
## CABINETRY FINISH



**CUSTOM FINISH**  
Finish: Custom Stain "Twilight"  
Species: Plain Sawn Oak

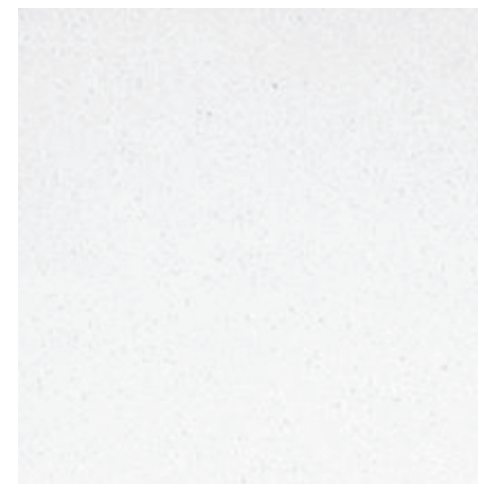
## STONE SLAB

Countertop & Backsplash



**ARTISTIC - SMOKE - LIMESTONE**  
3cm, straight edge  
Finish: Honed  
Backsplash: 4"

## STONE FLOORING



**KORBA**  
Finish: Honed  
Size: 12" x 24"  
Pattern: Brickset, 1/3 Offset - Parallel to Vanity  
Base: 3"

## SHOWER TILE

Walls & Ceiling, Bench Face & Niche



**ARTISTIC - SMOKE - LIMESTONE TILE**  
Finish: Honed  
Size: 6" X 12"  
Pattern: Straight set horizontal

## SHOWER FLOOR



**ARTISTIC - SMOKE - LIMESTONE TILE**  
Finish: Honed  
Size: 1" x 6" staggered mosaic

## SHOWER SLAB

Header, Curb, Jambs, Bench Top, Niche Shelf and Base to be Smoke Limestone Slab.

# LOWER LEVEL GUEST SUITE #1 BATHROOM PLUMBING

016/017

## FAUCET



**GRAFF**  
M.E. Series, three hole deck mounted faucet  
Finish: Chrome

## SINK



**KOHLER**  
Ladena Undermount Sink  
Color: White  
Size 21" x 14" x 5"

## SHOWERHEAD



**GRAFF**  
Universal Wall Mounted Shower  
Finish: Chrome

## HANDSHOWER



**GRAFF**  
Universal Shower Controls  
Finish: Chrome

## SHOWER CONTROLS



**GRAFF**  
M.E. Shower Controls  
Finish: Chrome

## TOILET



**TOTO**  
Aquia® IV Toilet - 1.28 GPF & 0.8 GPF  
Color: Cotton (White)

## ACCESSORIES

Dornbracht Hardware



**TARA SERIES TOWEL BAR**  
Size: 18"



**TARA SERIES ROBE HOOK**



**TARA SERIES TOWEL BAR**  
Size: 24"



**TARA SERIES TISSUE HOLDER**

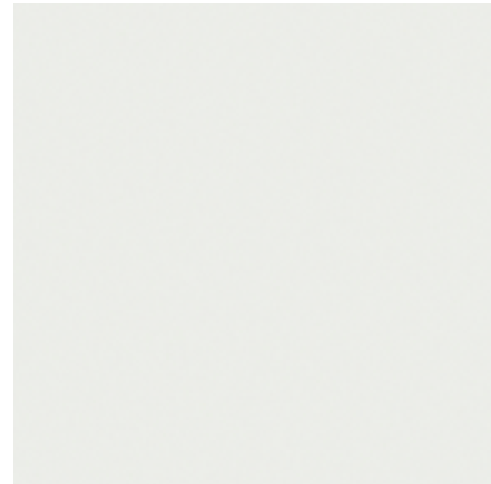


**POLISHED CHROME**  
Dornbracht Hardware Finish

# LOWER LEVEL GUEST SUITE #2/WIC FINISHES

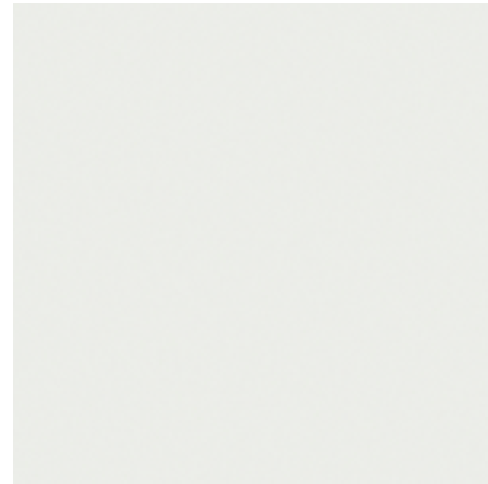
006/010

## CEILING FINISH



**DECORATOR'S WHITE CC-20**  
*Benjamin Moore*  
*Finish: Flat*

## WALL FINISH



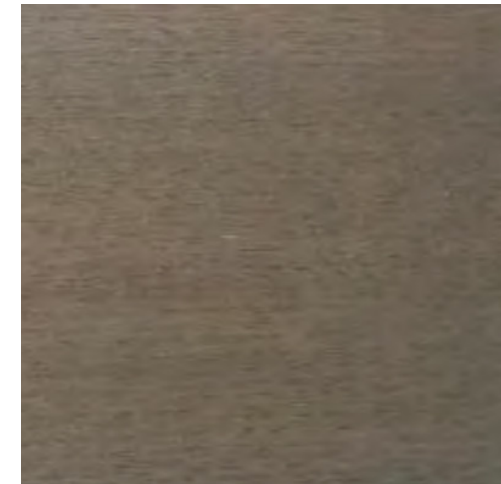
**DECORATOR'S WHITE CC-20**  
*Benjamin Moore*  
*Finish: Eggshell (level 5 smooth finish)*

## CARPET



**UNIQUE CARPETS - HARRISON PARK**  
*Color: 4429 SANDY BEACH*  
*100% Wool, tufted*

## CLOSET MILLWORK FINISH

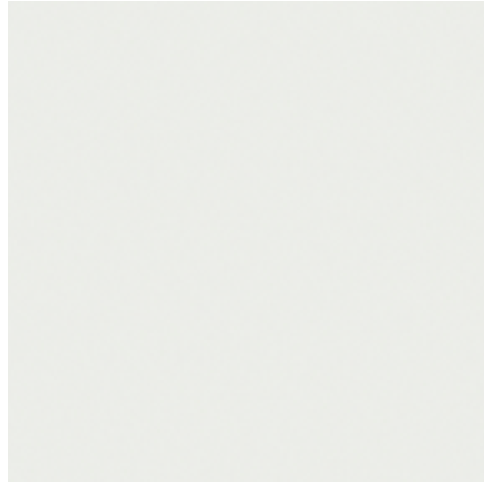


**CUSTOM FINISH**  
*Finish: Custom Stain "Twilight"*  
*Species: Plain Sawn Oak*

# LOWER LEVEL GUEST SUITE #2 BATHROOM FINISHES

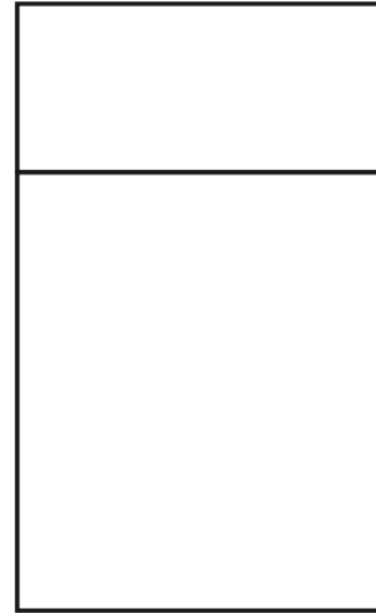
007/008/009

## CEILING FINISH



**DECORATOR'S WHITE CC-20**  
Benjamin Moore  
Finish: Flat

## CABINET & HARDWARE



**PANEL STYLE**  
Solid Door & Solid Drawer



**EMTEK**  
Cabinet Edge Pull  
4" or 6"



**POLISHED CHROME**  
Emtek Finish

## STONE SLAB

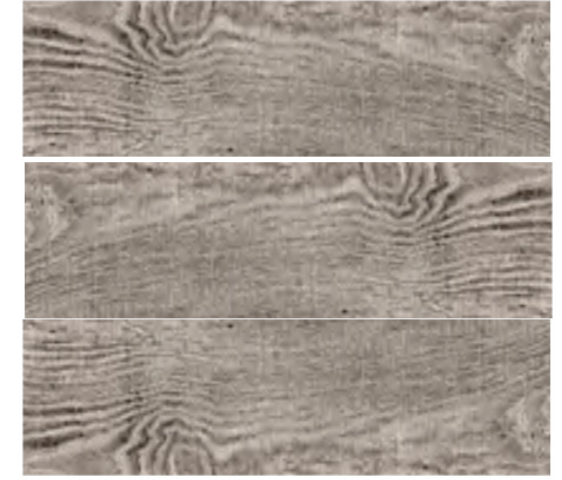
Countertop & Backsplash



**METRO DARK GREY QUARTZ**  
3cm, straight edge  
Finish: Honed  
Backsplash: 4"

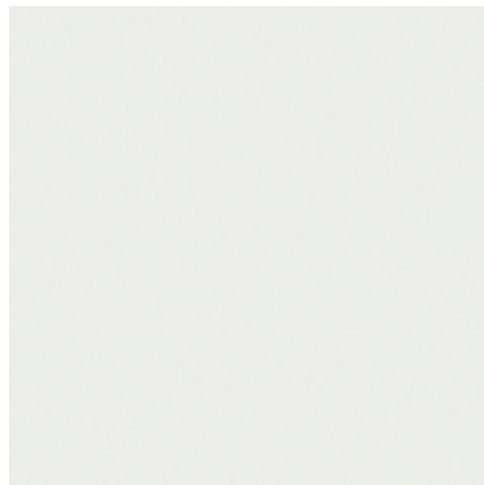
## SHOWER TILE

Walls & Ceiling, Bench Face & Niche



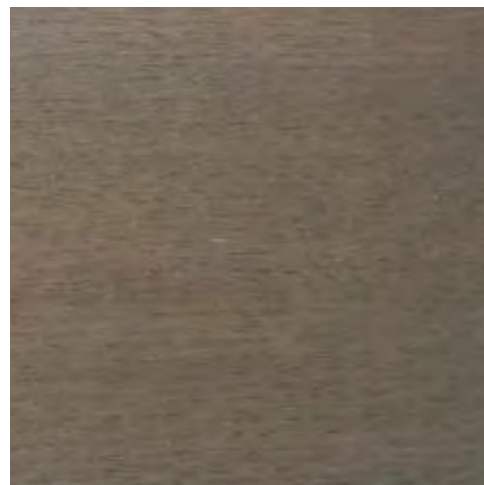
**STATALE VAPOR**  
Porcelain Tile  
Size: 6" x 47" & 8" x 47"  
Pattern: Random set/Horizontal

## WALL FINISH



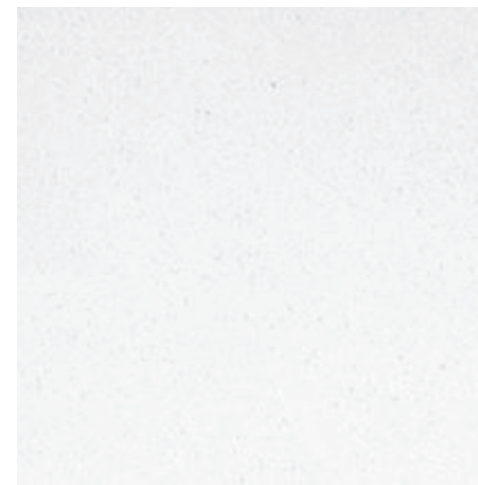
**DECORATOR'S WHITE CC-20**  
Benjamin Moore  
Finish: Eggshell (level 5 smooth finish)

## CABINETRY FINISH



**CUSTOM FINISH**  
Finish: Custom Stain "Twilight"  
Species: Plain Sawn Oak

## STONE FLOORING



**KORBA**  
Finish: Honed  
Size: 12" x 24"  
Pattern: Straight Set/parallel to vanity, no seam  
Base: 3"

## SHOWER FLOOR



**KORBA**  
Finish: Honed  
Size: 2" X 2" mosaic

## SHOWER SLAB

Header, Curb, Jambs, Bench Top, Niche Shelf and Base to be Metro Dark Grey Quartz Slab.



# LOWER LEVEL GUEST SUITE #2 BATHROOM PLUMBING

007/008/009

## FAUCET



**GRAFF**  
M.E. Series, three hole deck mounted faucet  
Finish: Chrome

## SINK



**KOHLER**  
Ladena Undermount Sink  
Color: White  
Size 21" x 14" x 5"

## SHOWERHEAD



**GRAFF**  
Universal Wall Mounted Shower  
Finish: Chrome

## HANDSHOWER



**GRAFF**  
Universal Shower Controls  
Finish: Chrome

## SHOWER CONTROLS



**GRAFF**  
M.E. Shower Controls  
Finish: Chrome

## TOILET



**TOTO**  
Aquia® IV Toilet - 1.28 GPF & 0.8 GPF  
Color: Cotton (White)

## ACCESSORIES

Dornbracht Hardware



**TARA SERIES TOWEL BAR**  
Size: 18"



**TARA SERIES ROBE HOOK**



**TARA SERIES TOWEL BAR**  
Size: 24"



**TARA SERIES TISSUE HOLDER**

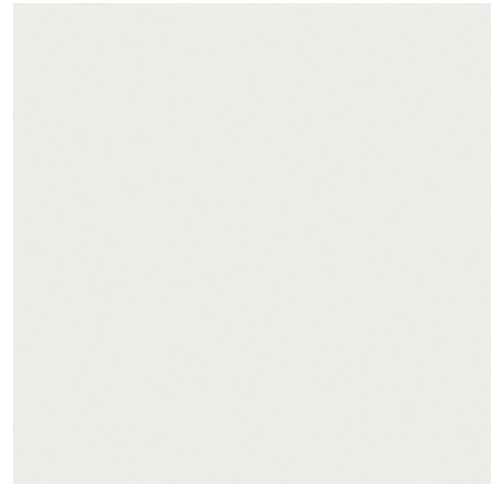


**POLISHED CHROME**  
Dornbracht Hardware Finish

# LOWER LEVEL GUEST SUITE #3/WIC FINISHES

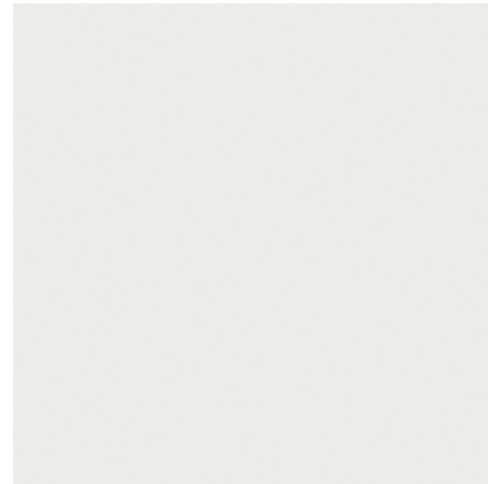
011/014

## CEILING FINISH



**DECORATOR'S WHITE CC-20**  
*Benjamin Moore*  
*Finish: Flat*

## WALL FINISH



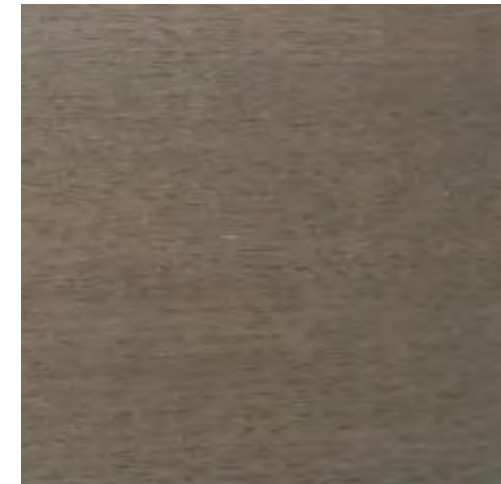
**DECORATOR'S WHITE CC-20**  
*Benjamin Moore*  
*Finish: Eggshell (level 5 smooth finish)*

## CARPET



**UNIQUE CARPETS - HARRISON PARK**  
*Color: 4429 SANDY BEACH*  
*100% Wool, tufted*

## CLOSET MILLWORK FINISH

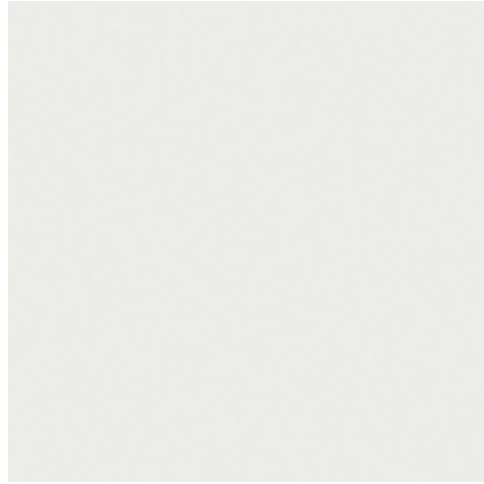


**CUSTOM FINISH**  
*Finish: Custom Stain "Twilight"*  
*Species: Plain Sawn Oak*

# LOWER LEVEL GUEST SUITE #3 BATHROOM FINISHES

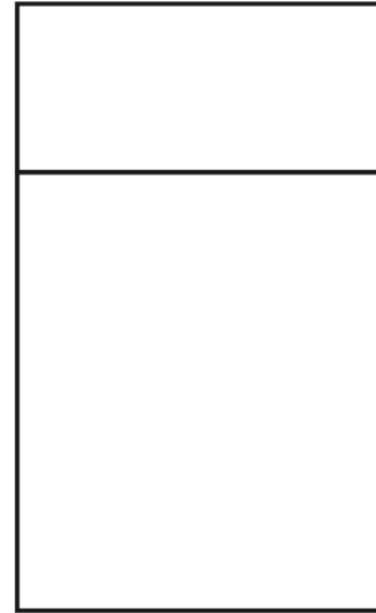
012/013

## CEILING FINISH



**DECORATOR'S WHITE CC-20**  
Benjamin Moore  
Finish: Flat

## CABINET & HARDWARE



**PANEL STYLE**  
Solid Door & Solid Drawer



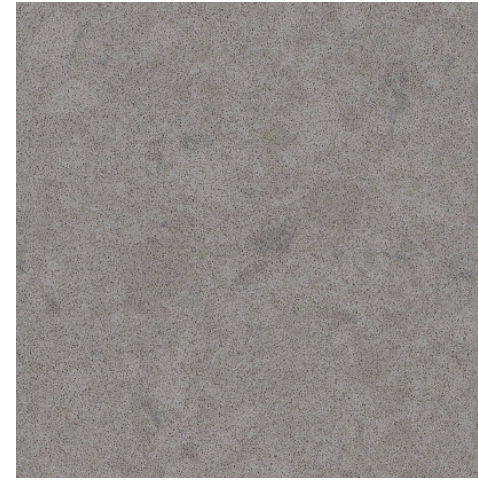
**EMTEK**  
Cabinet Edge Pull  
4" or 6"



**POLISHED CHROME**  
Emtek Finish

## STONE SLAB

Countertop & Backsplash



**CAESARSTONE QUARTZ - PEBBLE**  
3cm, Straight Edge  
Finish: Honed  
Backsplash: 4"

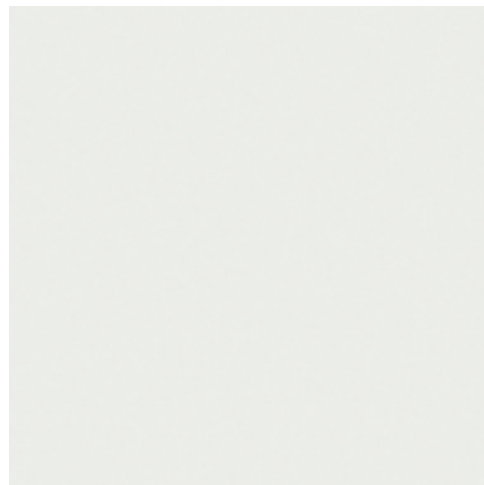
## SHOWER TILE

Walls & Ceiling, Bench Face & Niche



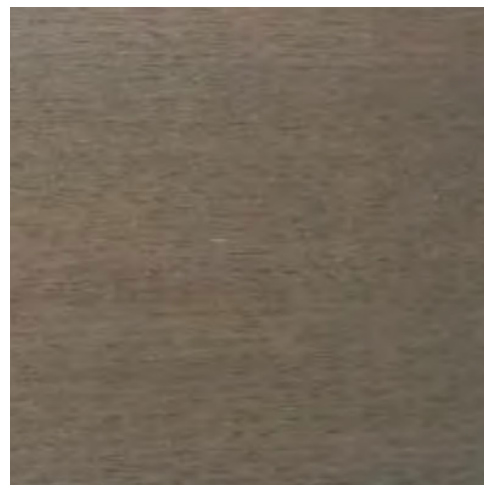
**HELLA WHITE - TUMBLED MARBLE TILE**  
Pattern: Versailles (Sizes: 8"x8", 8"x16", 16"x16", 16"x24")

## WALL FINISH



**DECORATOR'S WHITE CC-20**  
Benjamin Moore  
Finish: Eggshell (level 5 smooth finish)

## CABINETRY FINISH



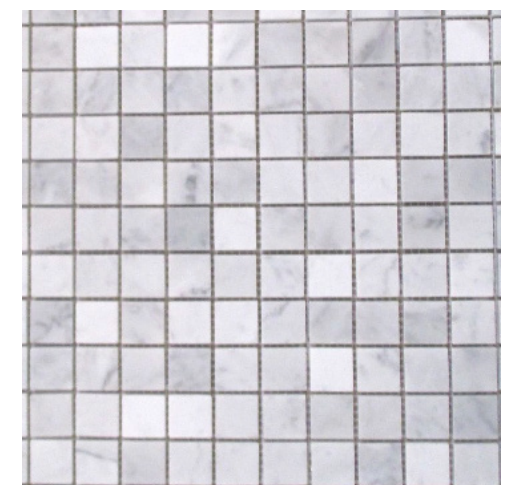
**CUSTOM FINISH**  
Finish: Custom Stain "Twilight"  
Species: Plain Sawn Oak

## STONE FLOORING



**COLONIAL WHITE - MARBLE TILE**  
Finish: Honed  
Size: 12" x 24"  
Pattern: Straight Set/parallel to vanity, no seam  
Base: 3"

## SHOWER FLOOR



**BIANCO CARRARA, MARBLE**  
Finish: Honed  
Size: 1" Random Mosaic  
Pattern: Mosaic

## SHOWER SLAB

Header, Curb, Jambs, Bench Top, Niche Shelf and Base to be Metro Dark Grey Quartz Slab.

# LOWER LEVEL GUEST SUITE #3 BATHROOM PLUMBING

012/013

## FAUCET



**GRAFF**  
M.E. Series, three hole deck mounted faucet  
Finish: Chrome

## SINK



**KOHLER**  
Ladena Undermount Sink  
Color: White  
Size 21" x 14" x 5"

## SHOWERHEAD



**GRAFF**  
Universal Wall Mounted Shower  
Finish: Chrome

## HANDSHOWER



**GRAFF**  
Universal Shower Controls  
Finish: Chrome

## SHOWER CONTROLS



**GRAFF**  
M.E. Shower Controls  
Finish: Chrome

## TOILET



**TOTO**  
Aquia® IV Toilet - 1.28 GPF & 0.8 GPF  
Color: Cotton (White)

## ACCESSORIES

Dornbracht Hardware



**TARA SERIES TOWEL BAR**  
Size: 18"



**TARA SERIES ROBE HOOK**



**TARA SERIES TOWEL BAR**  
Size: 24"



**TARA SERIES TISSUE HOLDER**



**POLISHED CHROME**  
Dornbracht Hardware Finish

# LOWER LEVEL PATIO PLUMBING

## HOT TUB



**GRANDEE SPA**  
Mountain Hot Tub  
7 Person Spa  
Color: Slate (cover), Platinum (shell), Monterey Gray (cabinet)



# MAIN LEVEL PATIO APPLIANCES

## GRILL



**CAL FLAME**  
BBQ Outdoor Grill  
42" 5 Burner Convection Grill  
Color: Stainless Steel

Acceptance

I hereby acknowledge that I have reviewed and approved the **noted/marked** finishes and design selection contained herein.

Acceptance below signifies general aesthetic and cost approval of the finishes and design selections contained herein. This approval assumes no responsibility for dimensions, quantities and conditions that pertains to fabrication and installation, to for the processes and techniques of construction. The Contractor is responsible for the coordination of the work of all trades and the performance of this work in a satisfactory manner, in full compliance with the contract documents, specifications and construction drawings.

Subsequent to this signed acceptance, if I elect to redesign or change any of the finishes and design selections contained herein, I acknowledge that the Contractor reserves the right to determine if the design modification significantly change the scope or quality of the project or the budget of the work. Project cost and project schedule implications shall be negotiated at that time, as well as any additional design fees if required. Such changes, additions or modifications shall be authorized and agreed in writing.

ACCEPTANCE BY OWNER

Date: \_\_\_\_\_

Signature \_\_\_\_\_

Printed Name: \_\_\_\_\_