

**TWO DAY MULTI-MILLION DOLLAR VALUATION - ASSETS FROM
ELECTRIC POWER GENERATING STATION INCLUDING CONSTRUCTION EQUIPMENT,
LINKBELT CRANES, TOOLROOM & FABRICATION MACHINERY, WELDERS, HUGE MRO
DEPARTMENT, BEARINGS, ELECTRICAL, 10,000 HP MOTORS, GEAR DRIVES & MORE**

BidSpotter.com
See Instructions on Page 3
To Become a Qualified Bidder on the Internet

PUBLIC AUCTION



Plant Closed

AES OHIO GENERATION J.M. STUART STATION

745 U.S. 52 – Aberdeen, Ohio 45101

70 Miles Southeast of Cincinnati, OH / 5 Miles East of Aberdeen, Ohio

SALE DATES: WEDNESDAY, JULY 25TH & THURSDAY, JULY 26TH, STARTING AT 9:00 AM

INSPECTION: TUESDAY, JULY 24TH, FROM 10:00 AM TO 4:00 PM



Featuring

DAY ONE

- Link-Belt Cranes
- Construction Equipment
- Toolroom Machinery
- Fabrication Machinery
- Maintenance Shop
- Shop Support Equipment
- Vehicle Maintenance
- Material Handling

DAY TWO

- Repair Parts Inventory Warehouse
- Electric Motors
- Gear Boxes
- Pumps
- Pallet Racking
- Cantilever Racking
- Material Handling
- Distribution Equipment
- Shop Support Equipment

IMPORTANT NOTICE

All site visitors must provide valid identification i.e. drivers license or government issued I.D.



Sale Under The Management Of

CINCINNATI INDUSTRIAL AUCTIONEERS

auctioneers | appraisers | since 1961 | cia-auction.com | info@cia-auction.com
2020 Dunlap St., Cincinnati, Ohio 45214 Phone 513-241-9701 Fax 513-241-6760



DAY 1 – WEDNESDAY, JULY 25TH



(2) Caterpillar Model D8T Crawler Dozer



Caterpillar Model D9N Crawler Dozer



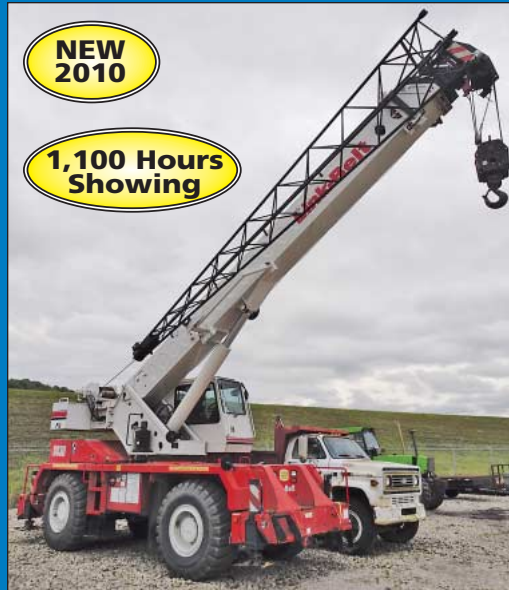
Caterpillar Model 420E 4-Wheel Drive Backhoe / Front End Loader



Caterpillar Model 637D Wheel Tractor Scraper Pan



10,000 LB JLG Model 10054 4-Wheel Drive "Skytrak" Telehandler



30 Ton Link-Belt Model RTC8030 Rough Terrain Hydraulic Crane

HYDRAULIC ROUGH TERRAIN CRANES

50 Ton Link-Belt Model RTC8050 Rough Terrain Hydraulic Crane; S/N J619-1231, Approx. 1,800 Hours Showing, 50 Ton Lift Capacity, Max Lift Height (No Jib) 118'4", Diesel Engine, (2) Jibs, Headache Ball (New 2010)

30 Ton Link-Belt Model RTC8030 Rough Terrain Hydraulic Crane; S/N E8K1-2154, Approx. 1,100 Hours Showing, 30 Ton Lifting Capacity, Max Lift Height (No Jib) 100'4", Diesel Engine, (2) Jibs, Headache Ball (New 2010)

CRAWLER DOZERS

(2) Caterpillar Model D8T Crawler Dozer; S/N CAT0008TLKP200848 and CAT00D8TLKP202817, Overhauled by Cat at 17,000 to 18,000 Hours (New 2005)

Caterpillar Model D9N Crawler Dozer; S/N CAT00D9N1JD02281, Rops canopy, Cab Enclosed, Overhauled 2011, Cat Diesel Engine, 26,101 Hours Showing

Caterpillar Model D5B Crawler Dozer; S/N 25X-02463, Engine No. 3306-8Z14904

RUBBER TIRE LOADERS

Caterpillar Model 918F 4-Wheel Drive Rubber Tire Loader; S/N 3TJ00328, 93" Wide Bucket, 6,236 Hours Showing

Caterpillar Model 420E 4-Wheel Drive Backhoe / Front End Loader; S/N CAT 0420ECHLS6940, 46" Rear Bucket, 4,187 Hours

WHEEL TRACTOR SCRAPER PANS

(2) Caterpillar Model 637G Wheel Tractor Scraper Pans; S/N DEY00226 and

DEY00229 (New 2009 and 2010), Approx. 11,700 and 10,100 Hours Showing, 34 Yard Scraper Capacity, Rated Load Capacity, 82,200 Lb., Lincoln Automatic Grease System

Caterpillar Model 637D Wheel Tractor Scraper Pan

(2) Caterpillar Model 637D Wheel Tractor Scraper Pan to be Sold as Parts Machine

TELEHANDLERS

10,000 LB JLG Model 10054 4-Wheel Drive "Skytrak" Telehandler; S/N 0160037780, Weight 29,895, 3,668 Hours (2009)

10,000 LB JLG Model 10054 4-Wheel Drive Telescoping Boom Skytrak Forklift; S/N 0160040042, Vehicle Weight 31,455 Lb., 2,678 Hours (2010)

5,000 LB JLG Model G5-18A Four-Wheel Drive Telehandler; 18' Max Lift Height, Diesel Engine, 4-Wheel Drive, Side Shift Fork Attachment, 128 Hours Showing

5,000 LB JLG Model G5-16 Telehandler; 20' Reach, 2,105 Hours Showing

5,000 LB JLG Model G5-16A Four-Wheel Drive Telehandler; Diesel Engine, 18' Max Lift Height, 2,106 Hours Showing

MANLIFT

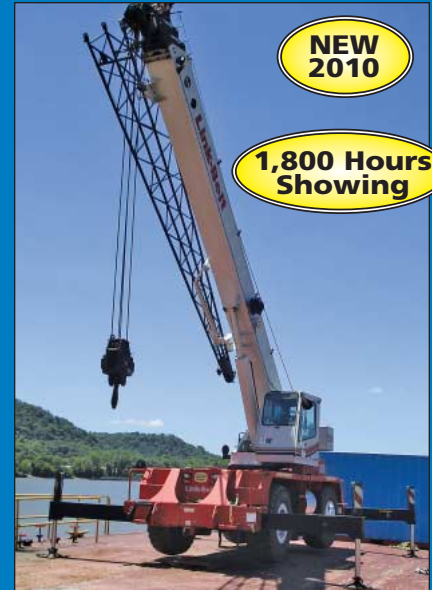
125' JLG Model 1250AP Boom Manlift; S/N 0300096027, 125' Reach, 63' Horizontal Reach, 1,000 LB Capacity, Telescoping Front and Rear Axles (2006)

SKID STEER LOADERS

(3) Bobcat Model S450 Skid Steer Loader; S/N AUVB11464, Hard Tires, 66 Hours Showing



(4) 5,000 LB JLG Four-Wheel Drive Telehandlers



50 Ton Link-Belt Model RTC8050 Rough Terrain Hydraulic Crane

(6) Bobcat Model S130 Skid Steer Loaders; S/N AU4Y13518 (707 Hours) and AOKY20216 (6,077 Hours) and A3KY36708 (____ Hours), Hard Tires

Bobcat Model MT55 Stand On Pedestal Skid Steer Loader; S/N B38T11390, 1,037 Hours

EMERGENCY VEHICLES

1991 Ford F800 Diesel E-One Hale Single Pump 1,000 Gallon Tank Fire Truck; VIN # 1FDXK84A7MVA02780, 1,250 Gallon Per Minute Hale Pump, Water Canon, 5" Hose, GMI 11 HP Generator, Ford Model 240 Diesel Engine, 6-Speed Transmission, 17,515 Miles

1996 Ford F350 XLT Power Stroke Diesel Ambulance; VIN # 1FDKF37F2EB35437, Horton Emergency Vehicles Ambulance Compartment, 7.3 Liter Diesel Powerstroke Engine, Automatic Transmission, Horton Light Curtain, Zoll E-Series Defibrillator / Heart Monitor, Ferno EZQWE Chair, 9,739 Miles

2008 Chevy 3500 Close Entry and Vertical Rescue Truck; VIN # 1GBJK39UX7E136823, 6 Lite-Vortec Gasoline Engine, DCK Emergency Vehicle System, Cap Splitz-Lift Crane, 71,750 Miles

15' Gratomade Enclose Trailer; VIN # 5RTBE1420ED041139, 7,000 GVWR

2009 Chevy Colorado LT Crew Cab Pick Up Truck; VIN # 1GCDT13E4481040L6, 3.7 Vortec Gasoline Engine, Automatic Transmission, 74,588 Miles

(4) Scott Air Pack with Masks

Confined Space Air Cart

Bauer Compressor Model M11V-E3460V Breathing Air Station



125' JLG Model 1250AP Boom Manlift



(2) Caterpillar Model 637G Wheel Tractor Scraper Pans



2012 Peterbilt Tandem Axle Water Truck

Compressor; S/N 75243, 726 Hours, (4) 4,500 PSI Tanks, Breathing Air Systems Model BA5550 CO Monitor

(10) Scot Breathing Masks

Honda Model EM54000 Propane Powered Generator, Electric Start, 138 Hours, (4) Work Lights

WATER TRUCK

2012 Peterbilt Tandem Axle Water Truck; VIN # 1NP9L50X0DD184520, 8-Speed Eaton Fuller Transmission with 2-Speed Axle, 3,764 Engine Hours Showing, 8,500 Miles Showing, Front Spray Barts, Cummins Diesel Engine, 4,800 Gallon Tank, Top Tank Mounted Spray Gun

LIFT TRUCKS

20,000 LB Taylor Model TX220S Pneumatic Tire Lift Truck; S/N 35088, Vehicle Weight 34,350, Hydraulic Fork Position, Diesel Engine, 87" Mast Width, 13' Tall Mast, 1,057 Hours Showing

(3) 15,000 LB Hyster Model S155FT Diesel Power Cushion Tire Lift Truck; S/N E024V02533J (5,919 Hours), S/N E024V02535J (5,303 Hours), S/N E024V02536J (5,481 Hours), 2-Stage Mast, 134" Lift Height, 105" Mast Height, 48" Forks,

Harris Cab Enclosure, Side Shift, Fork Positioning

6,000 LB Caterpillar Model GP30K LP Gas Hand Pneumatic Tire Lift Truck; S/N AT13L3971, 3-Stage Mast, 186" Lift Height, Side Shift, 3,488 Hours Showing, Cab Enclosed

5,000 LB Mitsubishi Model FG25N LP Gas Hand Pneumatic Tire Lift Truck; S/N AF17D03193, 3-Stage Mast, 188" Lift, 82" Mast, 48" Forks Side shift, 3,753 Hours

5,000 LB Mitsubishi Model FG25N-LP Solid Tire LP Gas Lift Truck; S/N AF17D10984, 2,324 Hours Showing

5,000 LB Mitsubishi Model FGC25N LP Gas Solid Tire Lift Truck; S/N AF82F00928, Side Shift Attachment

2,900 LB Nissan Model 35 Sit Down Electric Rider Type Lift Truck; S/N 1N1-721658, Side Shift Attachment

2,200 LB Mitsubishi Model FB20NT Sit Down Rider Type Electric Lift Truck; S/N EFB145018, Side Shift

1,500 LB Linde Model E15-02 Sit Down Rider Type Electric Lift Truck; S/N 238579

OTHER MOBILE EQUIPMENT

Sullair Model 185Q Portable Air Compressor; John Deere Engine, 2,314 Hours

8' Wide X 14' Tandem Axle Steel Bed Off Road Tag Trailer

90" Wide X 18' Tandem Axle Steel Bed Tag Trailer; 68" Between Wheel Rubber JLG Model E450AJ Electric Snorkle Lift; 500 LB Basket Capacity **Out of Service**

Caterpillar Model 6370 Coal Pan **Out of Service**

IQ System Series 1300 Air Compressor **Out of Service**

2007 Chevy 4X4 Pick Up; VIN # 1GCEK14C28E109732 **Out of Service**

2006 Chevy Pick Up; VIN # 2GCEC13C271526645 **Out of Service**

5' Wide X 30' Long Magliner Mobile Loading Ramp

30' Drop Deck Tandem Axle Yard Trailer with Front Dillie; 50 Ton Capacity Est.

(2) 8" X 20' Conex Storage Boxes
Caterpillar Model H65D Hammer Attachment; S/N FTS01019



Caterpillar Model 918F 4-Wheel Drive Rubber Tire Loader



20,000 LB Taylor Model TX220S Pneumatic Tire Lift Truck

WEBCAST BIDDER INSTRUCTIONS

➤ **Bidders in the United States** will receive approval forms from our office upon registering for the auction on www.bidspotter.com, pending the Auctioneers review of the information provided you will be approved at the Auctioneers discretion.

➤ **Bidders outside of the United States** must post a deposit of approx. 25% of their planned spending budget or \$2,500.00 minimum with Cincinnati industrial auctioneers in order to be approved to bid. Those who do not post the deposit will not be approved. **period.**

BidSpotter.com



(9) Bobcat S-450 and S-130 Skid Steer Loaders



2008 Chevy 3500 Close Entry and Vertical Rescue Truck



1991 Ford F800 Pumper Truck



(7) LP Gas and Diesel Lift Trucks up to 15,000 LB



(3) Electric Lift Trucks up to 3,000 LB



(6) 18,000 LB Rotary Lift Model MCHW618U100 Battery Powered Portable Vehicle Lifts



Deutsch Model 1023AS Farm Tractor



Maintenance Cart with Miller Bobcat 250 Welder, 11,000 Watt Generator (Gas Powered) and 3-1/2" Gas Powered Water Pump



2 Ton Portable Gantry with Coffing Hoist



(2) 350 Amp Miller Syncrowave 350LX Tig Welders



Coats Model 5035 RIM Clamp Tire Changer



Coats Model 950 Direct Drive Solid State Wheel Balancer



15,000 LB Rotary Lift Model S15IN610 Vertical Type Frame Vehicle Lift



24" Grob Model 4V-24 Vertical Metal Cutting Band Saw



(2) TrosionX Model 10MD Hydraulic Portable Torque Wrenches with Hydraulic Power Packs

BRIDGE CRANES

(8) 3 Ton X 18' Whitting Bottom Running Bridge Cranes with 2 Ton Manual and Electric Chain Hoists

3 Ton X 45' Reliable Double Girder Top Running Overhead Bridge Crane with Robbins and Meyers Bottom Running Hoist

PALLET RACK

(100) Sections Pallet 36" D X 8' L X 120" High Pallet Rack

(20) Sections 36" D X 12' L X 14' High Teardrop Style Pallet Rack

GROUND MAINTENANCE EQUIPMENT

Deutsch Model 1023AS Farm Tractor; S/N 74396426, 4-Wheel Drive, 6-Cylinder Deutsch Diesel Engine Model 7110, 3-Post Hitch, Live Power Takeoff

Rhino 6' Hydraulic Side Swing Bush Hog

AEBi Model TT270 4-Wheel Drive Hillside Mower; 84" Front Mounted Rotary Mower, 2,016 Hours Showing

VEHICLE MAINTENANCE EQUIPMENT

(6) 18,000 LB Rotary Lift Model MCHW618U100 Battery Powered Portable Vehicle Lifts; 8" Vertical Lift

15,000 LB Rotary Lift Model S15IN610 Vertical Type Frame Vehicle Lift; S/N CRM12C0001, 10" Vertical Lift

Coats Model 950 Direct Drive Solid State Wheel Balancer; S/N 1004300588

Coats Model 5035 RIM Clamp Tire Changer; S/N 1004101582

Coats Air Float Tire Changer

Hotsy Diesel Fired Steam Cleaner

Wellsaw Model 1000 Horizontal Band Saw; S/N 4227

Maintenance Cart with Miller Bobcat 250 Welder, 11,000 Watt Generator (Gas Powered) and 3-1/2" Gas Powered Water Pump

Parker Model 80 Hydraulic Hose Crimper with Full Complement of Fittings, Hose Material and Cut-Off Saw

10 HP Curtis Horizontal Tank Air Compressor

50 Ton OTC Model A Hydraulic H-Frame Press

(2) 2 Ton Floor Mount Rotating Jib with Hoists

Large Quantity of Mechanist Support Equipment Including: Hydraulic Floor Jacks, Transmission Jacks, Fontonia Portable Heater, Battery Chargers, Bearing Heaters, 15" Rockwell Bench Type Drill Press, DE Grinders, Large Quantity of Impact Sockets, Acetylene Outfits, Hydraulic Tire Lift, Ladders, Sand Blast Pot, Steel Racking, Lubrication System, Torpedo Heaters, Pneumatic Grease Pumps, Enerpac Hydraulic Unit with 100 Ton Jack, Large Quantity of Milwaukee Electric and Cordless Hand Tools, (2) 20,000 LBDrive on Truck Scales, Repair Parts Including Filters, Belts, Batteries, Starts, Hardware and Many Other Related Items

LATHES

40" X 192" Monarch Model 3220-28-192 Geared Head Toolroom Engine Lathe; S/N 49825, 31 to 1,140 RPM Spindle

Speeds: 32" 4-Jaw Chuck, Steady Rest, Taper Attachment, Sony DRO

32" / 56" x 144" Nobel Sliding Bed Geared Head Toolroom Engine Lathe; S/N 407462, Spindle Speeds: 6 to 288 RPM, 48" Face Plate with Chuck Jaws, 28" and 18" Chucks, Taper Attachment

24" X 92" Leblond Model 24" Regal 9" Hollow Spindle Geared Head Toolroom Engine Lathe; S/N 7HS593, Spindle Speeds: 6 to 400 RPM, Taper Attachment, 9" Hole Thru Spindle, 21" 4-Jaw Chuck, Steady Rest, Newall DRO

20" x 78" Monarch Model 2013X78 Geared Head Toolroom Engine Lathe; S/N 49826, Spindle Speeds: 13 to 1,500 RPM, 15" 4-Jaw and 12" 3-Jaw Chucks, Face Plates, Taper Attachment, Steady and Follow Rest, Newall DRO

18" X 60" Sharp Model 1860L Geared Head Toolroom Engine Lathe; S/N 9901226, Spindle Speeds: 20 to 2,000 RPM, 12" 3-Jaw Chuck, Steady Rest, Newall DRO, Various Other Chucks and Face Plates (New 2010)

16" X 60" Victor Model 1660E Geared Head Toolroom Engine Lathe; S/N

971208, Spindle Speeds: 40 to 2,000 RPM, Taper Attachment, Various Chucks and Steady Rest

MILLING MACHINES

5 HP Willis Model 5000Vs Dovetail Ram Variable Speed Vertical Milling Machine; S/N 200910004, Spindle Speeds: 60 to 3,600 RPM, 12" X 59" T-Slotted Work Table, Newall DRO, Power Table and Knee Feed (New 2010)

No. 2 Cincinnati "Cintimill" Horizontal Vertical Milling Machine; S/N 55302U5H, Horizontal Spindle Speed 40 to 1,800 RPM, Vertical Spindle Speeds: 100 to 1,530 RPM, 12" X 53" T-Slotted Work Table, Newall DRO

Cincinnati No. 2 M6 Horizontal Milling Machine; S/N 5J2P5C-5, Spindle Speeds: 25 to 1,500 RPM, 10" X 54" T-Slotted Work Table

RADIAL ARM DRILLS

5" X 15" Column Carlton Radial Arm Drill; S/N 3A-4999, Spindle Speeds: 12 to 1,200 RPM, T-Slotted L Base, Drill Box Table

63" X 13" Column Victor Model 1363H Radial Arm Drill; S/N 19057, Spindle Speeds: 44 to 1,450 RPM (New 2010)

GRINDERS - ALL TYPES

12" X 36" Thompson Hydraulic Automatic Surface Grinder; S/N 3B687652, 12" X 36" Electro Magnetic Chuck, Coolant System

Sellers Model 6GA Drill Grinder; S/N 66R6653

(3) Double End Pedestal Grinders to 2 HP

Lapmaster Model 24 Lapping Machine; S/N 124015, Lomplate with Lapping Rings

Darex Model E-90 Drill Grinder

SAWS

24" Grob Model 4V-24 Vertical Metal Cutting Band Saw; S/N 2402, 24" X 28" Work Table, Blade Welder

20" Doall Model 2012-2A Vertical Metal Cutting Band Saw; S/N 389-79168, 24" X 30-1/2" Work Table, Blade Welder

13" X 18" Wellsaw Horizontal Metal Cutting Band Saw; S/N 3993

AES OHIO GENERATION



175 Ton X 12' Cincinnati Model 175CBX 10' Hydraulic Press Brake



1/2" X 10' Cincinnati Model 500 Hydraulic Power Squaring Shear



7/32" X 72" WDM Hydraulic Initial Punch Power Plate Bending Rolls

(3) 10" x 16" Wellsaw Model 1016 Horizontal Metal Cutting Band Saws; S/N 2651, 1884 and 5282

MISCELLANEOUS TOOLROOM MACHINERY

100 Ton KR Wilson Model 37K-MD-1 Hydraulic H-Frame Press; S/N AS3070
3" Lucas No. 31 Horizontal Table Type Boring Mill; 24" X 48" Table, Outboard Support

DC Morrison No. 2 Keyseater; S/N K155883 (New 2014)

Blackstone-NEY Stainless Steel Ultra-Sonic Parts Washer Model AS-3000

48" Econoline Blast Cabinet with Dust Collector

42" Blast-It-All Model Magnum Blast Cabinet

(2) TrosionX Model 10MD Hydraulic Portable Torque Wrenches with Hydraulic Power Packs

60 Ton Industrial Engineering Company Portable Hydraulic Wheel Puller

Greenlee Model 460 Auto-Thread Pipe and Bolt Threader, 2" Bolt Capacity, 4" Pipe Capacity; S/N 836

2 Ton Portable Gantry with Coffing Hoist - To be Sold Via Photo

Inolect Circuit Breaker Lifter

3 HP United Air Specialists Dust Collector

Miscellaneous Tool Room Machinery Including: 20" Jet Single Spindle Floor Drill, 16" Jet Single Spindle Floor Model Drill, 24" Doall Single Spindle Drill with Electro Arc Tapping Machine, Oster Model 655 Pipe Master Pipe and Bolt Threader, Large Quantity Quick Change Pipe and Bolt Dies, Chasers, 24" Rockford Hydraulic Shaper, So-Low Model C40-9 Ultra-Low Freezer, Blue M Electric Oven, Lateral Safety Equipment, Acetylene Outfits, (15) Skids of Pumps, Motors, Test Equipment, (2) HD Welding Table

FABRICATION MACHINERY

175 Ton X 12' Cincinnati Model 175CBX 10' Hydraulic Press Brake; S/N 48244, 10" Stroke, (2) Front Extension Arms,

Palm Button Controls, 12" Overall, 10" Between Heading

1/2" X 10' Cincinnati Model 500 Hydraulic Power Squaring Shear; S/N 47739, 10' Squaring Arm, (2) Front Extension Arms, Front Operated Power Book Gauge

7/32" X 72" WDM Hydraulic Initial Punch Power Plate Bending Rolls; S/N 60234-94, Hydraulic End Drop

50 Ton Scotchman Model 5075-C580 Hydraulic Ironworker; S/N 371, with (3) Angle Cutting Attachments, Notching Attachment, Punches and Dies

12 Ga. X 6' Chicago Model BP-612-6 Box and Pan Brake; S/N 305890

Scotchman Model 314 Ironworker, Angle Shear, Flat Stock Shear, Punch - To be Sold Via Photo

55 Ton BVA H-Frame Hydraulic Shop Press - To be Sold Via Photo

PIPE AND TUBE BENDERS

Pedrick Model B-10 Hydraulic Pipe and Tube Bender; S/N 1056, Capacity 2" SCH 80 Pipe, 2.875" OD Tube, 2.5" OD Round Bar

Pedrick Model A-7 Hydraulic Pipe and Tube Bender; S/N 1178, Capacity 2" SCH 80 Pipe, 2.375" OD Tube, 1.75" OD Round Bar

Large Quantity Pedrick Bending Dies

BALANCER

American Hoffman Model PCH-19.1 CNC Balancing Machining; S/N

20164023, Maximum Weight Capacity 1,550 Lb., Maximum Part Diameter 25", Maximum Length Diameter 75", Minimum Length Diameter 5.5", PCH Measuring Computer Control (New 2016 - Never Installed)

WELDERS AND RELATED

(2) 500 Amp Miller Model Multi Operator DC Arc Welding Power Source

(2) 350 Amp Miller Syncrowave 350LX Tig Welders - To be Sold Via Photo

300 Amp Miller Model Gold Star 300SS DC Arc Welding Power Source

250 Amp Miller Bobcat 250 Portable Trailer Mounted Welder / Generator,

Gas Engine

230 Amp Hobart Champion Portable Trailer Mounted Welder Generator Gas Engine

200 AMP Miller Millermatic Mig Welder

(4) Miller Model MOG-250/250ARP Polarity Switch

Miscellaneous Welding Accessories Consisting of: (9) Dry-Rob Welding Rod Ovens, Plasma Cam Plasma Cutting Table with Power Source, Miller Fume Collection System, Heavy Duty Welding Tables with Vises, Plymovent Fume Vents, Acetylene Cutting Torch with Cart, Tank Carts, Welding Curtains

MACHINE SHOP SUPPORT ITEMS

Assorted Inspection Consisting of: Large Quantity of OD Micrometer by Mitutoyo (36"-42", 30"-36", 24"-30", 20"-24" and Other) Fowler 24 Piece OD Mic Set, (2) 11 piece Brown and Sharpe Mig Sets, Dial Indicators, Dial Bore Gages, Depth Gages, Height Gages, Vernier Calipers, Pin Gage Sets, Machinist Levels, Radius Gages, Thread Gages, and Many Other Items

Large Quantity Machine Accessories and Perishable Tooling: Mill Vises, Various Machine Vises, Dividing Heads, Jacob Drill Chucks, Angle Plates, V-Blocks, Hold Down Bolts and Clamps, Collets, Lathe Chucks, Drills, Taps Reamers and Related Items

Shop Equipment Consisting of: (4) Mag Base Drills, Milwaukee Hammer Drills, Cordless Tools, 13-3/4" to 20" Pipe Clamp Shell Beveller, Enerpac Hydraulic Unit, Climax Keyway Cutters and Flange Facers, Wachs Bevelers, Wachs Guillotine Saws, Work Benches with Vises, Steel Horses, Portable Carts, C-Clamps, Stencil Machine, 10 Ton H-Frame Press, 2-Door Steel Storage Cabinets, Beverly Hand Shears, Portable Dump Hoppers, Flammable Cabinets, Acetylene Torch Set with Cart, Air Hose Reels, Porta Powers, Portable tool Boxes, Electric Hand Tools, Clamshell Beveler, Bearing Heaters, (3) 48" Proto Portable Tool Boxes, And Many Other Related Items



Pedrick Model B-10 Hydraulic Pipe and Tube Bender



American Hoffman Model PCH-19.1 CNC Balancing Machining



40" X 192" Monarch Model 3220-28-192 Geared Head Toolroom Engine Lathe



18" X 60" Sharp Model 1860L Geared Head Toolroom Engine Lathe



5 HP Willis Model 5000VS Dovetail Ram Variable Speed Vertical Milling Machine



63" X 13" Column Victor Model 1363H Radial Arm Drill



DC Morrison No. 2 Keyseater



Blackstone-NEY Stainless Steel Ultra-Sonic Parts Washer Model AS-3000



24" X 92" Leblond Model 24" Regal 9" Hollow Spindle Geared Head Toolroom Engine Lathe



DAY TWO – THURSDAY, JULY 26TH



Large Quantity of Enclosed Gear Drives By Foute-Jones, Falk, Browning and Other



Partial View of Enclosed Gear Drives



Large Quantity of Spare Motors



Large Quantity of Pillow Blocks



Large Gear Drive

LARGE CAPACITY MOTORS, GEAR DRIVE AND OTHER

Large Quantity of High Capacity Gear Drives Motor, Gear Reducers and Other Related Items, Noted is a Sampling of These Items, As boxes are Opened and Racking Cleared Many Other Items will Be Posted in Auction Catalog

536 HP Foute-Jones Enclosed Gear Drive; S/N 403197X, Input RDM 1,750

350 HP Falk Model 2155Y2-5 Enclosed Gear Drive; MO No. 7-865-538-01 (807-000-900)

350 HP Falk Type 2160Y2-B Enclosed Gear Drive; 1,750 RPM

300 HP Browning Size 5016HPZ Gear Drive; S/N 6043, 1,750 RPM (807-001-521)

300 HP Browning Size 5017 Hours, Enclosed Gear Drive; S/N 4496, Rebuilt 5/5/16 Dayton Gear (807-001-590)

100 HP Browning Size 5010-HP2 Gear Drive; S/N 5330, 1,750 RPM

Prager Size UNGOADER Gear Drives; Service Rating 150 HP at 1,750 RPM (807-001-820)

Philadelphia Size 213HSD Gear Drive; S/N 107382, Rated at 2,100 HP at 1,750 RPM

60 HP Falk Model 2160Y3-S Enclosed Gear Drive; Input at 1,750 RPM (807-000-86)

SDHS-13DA Gear Drives

Riggs Machine (Foote-Jones Gear Drive) Part No. 807-001-500; S/N 59025- Used For Conveyor Drive

Jones Gear Drive; S/N 380191 (807-001-170)

600 HP MJ Electric Motor; 1,775 RPM

(2) 200 HP WEG Frame 586/7T Electric Motors Model Z20012ET30050605, 1,190 RPM, New in Crates (807-000-700)

150 HP Baldor Frame 4457S Motor at 3,575 RPM, spec No. B541148, Powering Carver Type RS6-C Pump; S/N 193660-1A, 300 GPM (New) (807-005-006)

1,000/1,333 KVA Electric Service Co. ELSCO Dry-Type Transformer; S/N 66806 (New 8/9/11 - Appears Never Put in Service)

100 KVA National Dry Transformer; S/N 00257-1

200 HP (Est.) Chemineer Mixer Motor

125 HP Chemineer Model 13HTMD125 Mixer Motor; S/N 556106-21, 1,200 RPM

100 HP Chemineer Model

12HTMD-100 Mixer Motor; S/N 55106-8, 1,800 rpm, Rebuilt By Dayton Gear (3/26/18) Order No. 12657-1

Dayton Gear Rebuilt (2/25/16) Gear Reducer, Order No. 12669-1, Aes NO. 807-005-125

Powell No. 60-17" Valve Assemblies

(2) New Con Size 60 X 40 X 21 Valves (New) (807-902-650)

(2) New Con High Pressure Vales (New)

No. 10 Moreller 11" Valves

No. 70 Fisher High Pressure Actuators

(2) Gardner Denver NASH Size CL-1003 Vacuum Units

General Electric ATb Air Supply Unit- High Pressure Compressor; Registry No. 09-94-277-1

84" Wide X 54' Diameter Gear Cable Drive Assembly (807-901-110)

(5) Babcock& Wilcox Model DRB-4Z Low NOx Burners (New)

CENTRAL MRO FACILITY SUPPLIES

(500) Sections Steel Shelving
Complete Loaded with Power Plant Maintenance and Repair Parts Consisting of; Electric, Plumbing, Pulleys, Bearings, Hardware All Types, Brass Bushings, Fuses, Valves



Large Quantity of Power Plant Maintenance and Repair Parts



Large Quantity Small Repair Parts Including Electrical, Relays, and More

and Valve Parts, Power Transmission Parts, Electric Wire, Circuit Breakers and Relays, Conduit Fittings, Hose, Microprocessor Parts, Thermocouples, Gaskets, Flange, Pipe Fittings

(120) Sections Pallet Rack

Stocked with: Large Gate Valves, Large Gear Reducers, Large HP Vertical Pumps 6" Capacity, Air Winch, New Con and Emerson Electric and Hydraulic Gate Valves, Air Compressor Parts, Electric Motors to 10,725 HP, 12" Process Pump Valve, Air Hose, Welding

and Brazing Rod, Vehicle and Off-road Equipment Filters, Air Filters, Hazmat Material, Rope, Large Quantity Heavy Electric Wire, Large Pipe Fittings, Stainless Steel Valves, Pneumatic Actuators, Large Quantity Hydraulic Oil, Spill Pallets, Wire Rope and Cable, Large Pillow Blocks, Large Bushings, Pulleys, Liquilite Conduit, Transformers, Circuit Breakers, Huge Quantity Electric Motors, Johnson March Dosing System

(25) Sections 5' Arm Single Sided Cantilever Racks

(11) Sections Double Sided Cantilever Racks with Flat Stock, Bar and Round Stock, All Thread Rod, Pipe Heat Exchanger, Sheet Stock

FLOOR SCRUBBER

Advance Model 3820C Electric Sit Down Rider Type Electric Floor Scrubber; S/N 10004807

STRETCH WRAPPER

60" Lantech Rotary Stretch Wrapping Machine



Drives for Conveyor Belts

Day Two - Offsite Motors

Located Offsite - To Be Sold Via Photo on Day Two

Inspection by Appointment Only with CIA Office 513-241-9701

NEW AND REBUILT ELECTRIC MOTOR INVENTORY

New and Rebuilt Electric Motors, Complete List Available Listing Manufacturer, Frame Number, Speed, Serial Number, New or Rebuilt Contact Jerome Luggen 513-241-9701 for Complete Details

Offsite Motors will be Loaded on Buyers Truck at No Cost

- (2) 10,727 HP Motors
- (2) 1,750 HP Motor
- (2) 8,700 HP Motor
- (2) 1,250 HP Motors
- 4,500 HP Motor
- 1,000 HP Motor
- 2,500 HP Motor
- (3) 800 HP Motors
- 2,250 HP Motor
- (4) 700 HP Motors
- Others Motors but not limited to: (2) 600 HP, (4) 350 HP, (4) 300 HP, (5) 250 HP, (3) 200 HP, (2) 150 HP, (2) 125 HP, (6) 100 HP, (2) 75 HP, (5) 60 HP, (7) 50 HP, (2) 30 HP, (2) 7.5HP



4,500 HP Motor



(2) 10,727 HP Motors



(2) 8,700 HP Motors



Large Quantity of New and Rebuilt Motors up to 10,727 HP



Large Quantity of Electrical Wire



(11) Sections Double Sided Cantilever Racks with Flat Stock, Bar and Round Stock, All Thread Rod, Pipe Heat Exchanger, Sheet Stock



60" Lantech Rotary Stretch Wrapping Machine



Advance Model 3820C Electric Sit Down Rider Type Electric Floor

PUBLIC AUCTION

Plant Closed

AES OHIO GENERATION J.M. STUART STATION

745 U.S. 52 – Aberdeen, Ohio 45101
70 Miles Southeast of Cincinnati, OH

SALE DATE:
**Wednesday, July 25th &
Thursday, July 26th**
STARTING: 9:00 AM

INSPECTION:
Tuesday, July 24th
10:00 AM to 4:00 PM



**CINCINNATI
INDUSTRIAL
AUCTIONEERS**
auctioneers | appraisers | since 1961

Contact Information
2020 Dunlap St.
Cincinnati, Ohio 45214
Phone 513-241-9701
Fax 513-241-6760
www.cia-auction.com



Multi-Million Dollar Assets from Electric Power Generating Station

FIRST CLASS MAIL!

PRE-SORT
FIRST CLASS
U.S. POSTAGE
PAID
CINCINNATI, OHIO
PERMIT NO. 3593

Important Mail

TO BE DIRECTED TO THE ATTENTION
OF EXECUTIVE PERSONNEL

WEDNESDAY, JULY 25TH & THURSDAY, JULY 26TH

PUBLIC AUCTION

Plant Closed

AES OHIO GENERATION J.M. STUART STATION

745 U.S. 52 – Aberdeen, Ohio 45101
70 Miles Southeast of Cincinnati, OH

IMPORTANT NOTICE:

Although information has been obtained from sources deemed reliable, the auctioneer makes no warranty or guarantee, expressed or implied, as to the accuracy of the information herein contained. It is for this reason that buyers should avail themselves of the opportunity to make inspection prior to the sale. This brochure is intended to provide general information of the equipment being offered and is subject to errors, omissions, additions or deletions. Please check with the Auctioneer's Office for a final listing. Items offered may or may not necessarily be sold as described and/or photographed in this brochure. All items must be removed from the premises by February 17th, 2017.

MAIL BIDS ACCEPTED WITH A 25% DEPOSIT

DIRECTIONS

From the I-275 Loop South of Downtown Cincinnati Proceed East on I-275 to Exit 71 for US-52 East Towards New Richmond. Continue onto US-52 East / Ohio River Scenic Byway for 55 Miles through the town of Aberdeen, Ohio. Sale Site Will be on Your Right About 4 Miles After Passing Through Aberdeen's City Center. Watch for Auction Signs and Auction Parking.

AUCTIONEERS

Cincinnati Industrial Auctioneers, Inc. – License No. 63-1983-10439

Jeffrey L. Luggen – License No. 57-1983-33789

Jerome A. Luggen – License No. 62-1983-33799

Joseph M. Luggen – License No. 2010-0000-26

John F. Rome – License No. 57-2000-84249



TERMS OF SALE

All equipment described herein will be sold "as is", "where is" to the highest bidder or bidders for cash in accordance with our regular terms and conditions of sale. Unless other satisfactory arrangements are made, a **25% deposit** in cash, certified or cashier's check payable to Cincinnati Industrial Auctioneers, Inc., is required on all purchases. Firm and personal checks accepted only if accompanied by a letter from your bank guaranteeing your funds. All sales are subject to state and/or local taxes unless a signed exemption form is presented at the time of purchase. All balances are due at the conclusion of the sale. No merchandise may be removed while the sale is in progress. All bidders must comply with our Standard Terms of Sale, copies of which will be available at the sale site or can be obtained from our website. All items must be removed from the premises by February 17th, 2017.

15% ONSITE BUYER'S PREMIUM
18% ONLINE BUYER'S PREMIUM



Sale Under The Management Of

CINCINNATI INDUSTRIAL AUCTIONEERS

auctioneers | appraisers | since 1961 | cia-auction.com | info@cia-auction.com
2020 Dunlap St., Cincinnati, Ohio 45214 Phone 513-241-9701 Fax 513-241-6760