

KIP 75 SERIES

DYNAMIC DESIGN - EXCEPTIONAL VALUE

10 D / A1 size prints per minute (2 or 4 Roll)

[KIP 7570 Print System](#) | [KIP 7580 MFP System](#) | [KIP 7590 MFP Production System](#)

The innovative space saving design of the KIP 75 Series with top stacking delivers increased speed, impeccable b&w print quality, setting new performance standards to easily meet project timelines while reducing cost. High Definition Print Technology delivers rich expressive black density with advanced greyscale and fine line enhancement. The 7570 Print System easily handles the demands of any network printing environment. Manage daily print, scan and copy requirements effortlessly with the KIP 7580 MFP or upgrade to the production power of the KIP 7590 MFP to optimize production with confidence.

The KIP 75 Series hourly productivity and configuration versatility will give your organization the confidence and flexibility to meet the demands associated with technical printing.



Perfect View

Adjustable 12" touchscreen for the ideal viewing and management of system features.

Print Production

3,600 q. ft/hour



KIP 75 SERIES

KIP 7570 Network Print Systems

KIP cloud connectivity enables productive printing access anytime, anywhere. The KIP 7570 network print system makes working smarter easy for small or large workgroups. The Perfect View adjustable KIP smart multi-touchscreen offers intuitive printing directly from a variety of network resources, cloud connections, removable media, local mailboxes and historical queue; you don't have to leave the printer to perform important tasks. Easily upgrade the KIP 7570 to a multi-function print system.



KIP 7570 network print system with integrated top stacking print tray



KIP 7580 multi-function system with integrated CIS scanner & top stacking print tray

KIP 7580 Multi-Function Systems

The KIP 7580 MFP Systems with CIS scanning offer a new innovative space saving design with top stacking that fits where you need it – in tight spaces or against the wall. Automated workflow efficiency is integrated with the KIP smart multi-touchscreen for powerful single touch efficiency.

KIP 7590 Multi-Function Production Systems

Optimize production with confidence. The KIP 7590 delivers intelligent productivity that expands enterprise workflow capabilities and efficiency. The modular footprint design includes a KIP 2300 CCD scanner that sets a uniquely high standard for color scanning speed, face up/face down/thick media document feeding versatility and digital imaging quality.



KIP 7590 MFP system with KIP 2300 CCD production scanner

KIP 75 SERIES SYSTEM FEATURES

- Space Saving Automation
- KIP Smart Multi Touchscreen
- System K Print Management Suite
- High Definition Print Technology
- Convenient Top or Production Stacking



KIP 7570 print system & optional KIPFold 2800 online fan & cross folder



Innovation, Experience & Productivity

KIP System K Software provides an enhanced user experience and delivers exceptional productivity for the seamless control of color and black & white print demands. This innovative software suite includes print submission applications, complete system management with intuitive feedback, intelligent workflow automation, total control of user security and the most robust accounting features available. Designed in a familiar easy to use Windows® interface and optimised for productivity with the KIP 800 (color) and KIP 70 Series (black & white) print systems.

KIP System K Software Features & Benefits

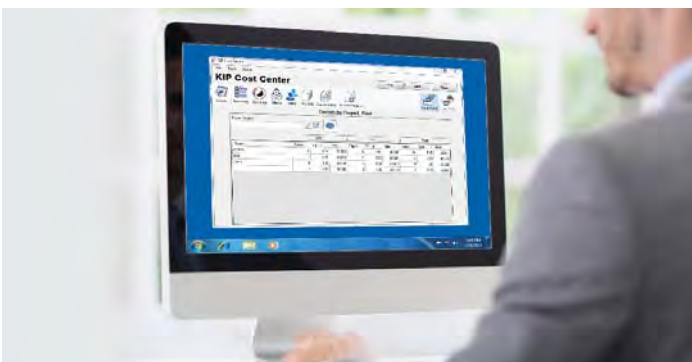
- Standardised system icons with tile interface
- Print submission applications with systems management, configuration and systems status
- Software applications feature ribbon command bar with extended choice of functions
- SNMP protocols, cost center control and cloud collaboration
- System K Windows® Driver, WHQL certified, touch PC compliant with advanced functions and system status



KIP Multi-Touch Touchscreen All system functions for the KIP 70 Series are performed through an integrated, 12" multi-touch style color display to copy, print and scan both color and black & white documents.



KIP Print Submission Designed for Windows® PC's, KIP PrintPro is an intuitive system management and print submission application for the complete range of black & white systems.



KIP Cost Center The KIP Cost Center application retrieves extensive log files directly from KIP Systems and automatically generates production reports for user, project, and department level accounting data.



KIP Cloud Connect Sharing online content via popular Cloud Services has become a critical collaboration tool. Scan to and print from the cloud directly at the multi-touch display.

KIP SYSTEM K SOFTWARE FEATURES & BENEFITS

KIP System K Multi-Touch Screen

KIP Multi-Touch Touchscreen	Vivid 12" Color Multi-Touch Display Fully Articulating Viewing Angle Print, Copy and Scan in Black & White and Full Color Super View for Swipe, Pinch, Spread and Rotate Print Directly from Removable Media, the Cloud and Local Mailboxes Full Color User Guides Integrated Copy, Scan & Print Previews with comprehensive AOI functions On-Screen Set Copy Editor Manage History Queue User Templates System Presets for Company Standards
KIP Copy & Print Plus	Full Size Preview with Super View Comprehensive AOI functions using modern touch gestures Real Time Image Preview Full Screen Color Preview Advanced Color Image Enhancement
KIP Cloud Connect	Select from Multiple Cloud Services Print from KIP Cloud Connect Scan to KIP Cloud Connect Unlimited Cloud Connections Single or Multiple Files Choose Files from Multiple Cloud Services for Single Print Job Easy Configuration from Multi-Touch Screen Collated Sets Printing

KIP System K Print Drivers

Windows® Driver	Fast Spooling for Multiple Copies or Sets Displays Real Time System Status Set Collation Provides Current Media Information Media Selection Secure PIN Printing Send Job on Hold Save/Load Templates Brightness Adjustment Unlimited Image Quality Presets Pens, Dithering, Page Sizes, Fold Patterns, and Scaling System Preset Selection
AutoCAD Driver	Fully Compatible with Current Versions of AutoCAD True HDI AutoCAD Driver 32 and 64 Bit Operating System Compatibility Real Time Media and System Status Custom Media Size Configuration Media Saving by Auto Rotation and Advanced Roll Selection Advanced Color Mode Image Type Selection Pens, Dithering, Page Sizes, Fold Patterns, and Scaling System Preset Selection

KIP Data Security Features

KIP Data Security	Image Overwrite Removable Hard Disk Drive Accessory Kit Operating System: Windows® Standard Embedded 7 Standard Security Updates Data Encryption and Virus Scanning Applications KIP Secure Print SSL Communications
-------------------	--

KIP System K Print Submission Applications

KIP PrintPro	Multiple Copies or Collated Sets WYSIWYP Image Preview Individual File Settings for Job Matrix Templates Multi-Page Settings Color Adjustments and Filter Selections E-mail Notification Customize Job Build Matrix Windows Document Folding and Stamping HPGL Pen Preset Selection Windows® 7/8/10 and Vista Compatible (32 and 64 Bit) PC's Customize System and Folder Presets Manage Print Queue KIP Secure Print
KIP PrintPro.NET	Multiple Copies or Collated Sets WYSIWYP Image Preview Individual File Settings for Job Matrix Templates Multi-Page Support Color Adjustments and Filter Selections E-mail Notification Document Folding and Stamping HPGL Pen Preset Selection Transfer Files from KIP Printer Mailbox Compatible with Microsoft Internet Explorer (v. 10 and up), Google Chrome (v. 44 and up), Mozilla® Firefox, Opera and Apple Safari Customize System and Folder Presets Manage Print Queue and User Settings KIP Secure Print
KIP Graphic Express	Unlimited Workstation Licenses Color, Black & White and Grayscale Printing Job Editor for Mixed Color and Black & White Sets Multi-Page PDF/TIF Load and Save RIP Presets Filter Editor for Color Control ICC Profile Support Factory/Custom Media Profiles Nest Single and Multiple Images Automatic Horizontal and Vertical Paneling Softproof and Color Gamut Notifications Area of Interest (Zoom to Area and Print) Editing Tools KIP Accounting Center Integration KIP Cost Center Integration
KIP Smart Print & Scan	Submit Print Ready Files via E-mail Attachments Works with any Web Enabled KIP Printer Print Black & White or Color Documents Scan Full Size Documents to E-mail Choose an Area of Interest Remote Scan Auto-Archived or Printed by KIP Printer Optional Keywords Provide Expanded Flexibility

KIP System K Accounting / Administrative Applications

KIP Accounting Center	Username and Two Customizable Fields Import User Data Using LDAP Clear Fields after each Job Submission ASCII Import/Export Easily Update User, Project and Department Data Password Protect any or all Data Entries No Special Data Servers Required PC Based Windows® 7/8/10 and Vista Application
KIP Cost Center	Integrated with all KIP Apps and Touchscreen Systems Track Color and Black & White Copy, Scan and Print Easy to Understand Graphical Reports Average Toner Coverage by Percent Daily Print and Scan Volume for Color and Black & White User, Project and Department Categories Access the Details of the Last 100 Jobs KIP Toner Costs by Color and Black & White KIP Maintenance Costs KIP Scanner Costs by Color and Black & White PC Based Windows® 7/8/10 and Vista Application
Role Based Access Controls	Easily Assign Roles for Device Functionality to Individual Users Collect Data to Effectively Analyze Print System Usage Optimize Rules for Streamlining Print Environment Efficiency Intelligent Presets for Intuitive Productivity Export Roles to Other System K Printers Limit Device Access through Authorization Policies Require Authorization through Optional Smart Cards, or PIN Identification Codes or Numbers (PIC, PIN) Increases Security
KIP Card Reader Systems	Contactless Card System Integration: Standard FeliCa Cards Various Contactless NFC Tokens and Cards NFC Forum – Certified Card Reader User Authentication Linked to Card/NFC Token Release User Jobs at Touchscreen KIP Accounting Center Integration Common Access Card Solution: Enables/Disables Network Access Designed for Easy Installation Meets Homeland Presidential Security Directive (HSPD-12) Local and Network User Authentication Using LDAP or Active Directory Netgard™ MFD In-Line Network Appliance
KIP Printer Status / SNMP	SNMP Communication to KIP Printer PC Based Windows® 7/8/10 and Vista Application Monitor Status of KIP Printers Auto Detect KIP Printer (LAN) IPv4 & IPv6 Visual Notification for Machine Status View all KIP Printers on a Single Screen Automated Meter Read

KIP System K Print Management Solutions

Touchscreen Technical Interface	The KIP Touchscreen Technical Interface is an integrated comprehensive program for the control of KIP Systems, Installation & Technical Support. Utilize tablet style controls to provide comprehensive and easy access to functions such as automatic adjustments, program updates and printer status, reducing the duration of on-site support and improving productivity.
KIP Custom Media Manager	Accessed by web browser, the KIP Custom Media Manager allows unlimited operator control of media types based on media name, project or job identification.

KIP 70 SERIES SPECIFICATIONS

General	7 Series	71 Series	75 Series	79 Series
Description	Monochrome wide format print/copy/scan with color scanner			
Type	Electrophotography (LED) with organic photoconductor (OPC) and closed toner system			
Speed D Size per Minute	3	6	10	14
Warm Up Time (from cold)	Less than 2 minutes from standby			
Configurations	MFP	MFP	P / MFP	P / MFP
Roll Options	1 Roll	2 Roll	2 or 4 Roll	2 or 4 Roll
Output Delivery	Front	Top / Rear	Top / Rear	Top / Rear
Electrical Requirements	120V plus/minus 10%, 50/60Hz, 12A	120V plus/minus 10%, 50/60Hz, 12A	220V-240V +6% or -10%, 50/60Hz, 13A	220V-240V +6% or -10%, 50/60Hz, 15A
Power Consumption (Standby)	300W	500W	430W	1,100W
Power Consumption (Printing)	700W	1,100W	< 1,500W	2,700W

Printer

Print Resolution	600 dpi x 1800 dpi	600 dpi x 2400 dpi	600 dpi x 2400 dpi	600 dpi x 2400 dpi
Paper Capacity	1 Roll	2 Roll	2 or 4 Roll	2 or 4 Roll
Output Sizes Width	11" - 36"	11" - 36"	11" - 36"	11" - 36"
Output Sizes Length	8 ft. / 24 m	20' / 6 m (standard), 500' / 150 m based on media validation		
Paper Weight	Bond 18-24 lb., Vellum/Translucent Bond 18-20 lb., Im 3.5 - 4 mil			
Media Type	Bond / Vellum / Film			

Controller

Controller Type	KIP System K Controller with Windows 7 Embedded			
Memory	2GB DDR3 Standard - Upgradable to 4 GB			
Hard Drive	Minimum 320 GB - Unlimited Upgrade			
Supported File Type	DWF, PDF, PDF-A, HPGL 1/2, HP-RTL, Calcomp 906/907, CALS Group 4, TIFF Group 4, CIT/TG4, Grayscale TIFF, TIFF Packbits, PNG, JPEG			

Scanner

Scanner Type	CIS	CIS	CIS / CCD	CIS / CCD
Scan Resolution	600 dpi			
Scan Format	TIFF, Multipage TIFF, PDF, PDF-A, Multipage PDF, DWF, JPEG			
Scan Destination	Local USB (removable media), Mailboxes (local), FTP, SMB Cloud: Google Drive/Dropbox/Box/OneDrive/SharePoint			
Original Size Width	11" - 36" / 210 mm to 914 mm			
Original Thickness	0.05 mm - 1.60 mm (image quality over 0.25 mm not guaranteed)			

KIP 70 SERIES ENVIRONMENTAL RESPONSIBILITY



Milwaukee: (414) 327-5010
Madison: (608) 242- 7200
Email: info@bpicolor.com



KIP.COM/GREEN

FOR MORE INFORMATION



www.KIP.com

USA: Phone: (800) 252.6793 | E-mail: info@kip.com CANADA: Phone: (800) 653.7552 | E-mail: info@kipcanada.com

KIP is a registered trademark of the KIP Group. All other product names mentioned herein are trademarks of their respective companies. All product features and specifications are subject to change without notice. Complete product specifications are available upon request. © 2016