

8-Series Kiosk Hardware Verification Procedure



Copyright © 2015 by Source Technologies. All rights reserved.

No part of this document may be reproduced or utilized in any form or by any means, electronic or mechanical, including photocopying, recording or by any information storage and retrieval system, without permission in writing from Source Technologies.

Published in the United States of America by:
Source Technologies
4205B Westinghouse Commons Drive
Charlotte, North Carolina 28273

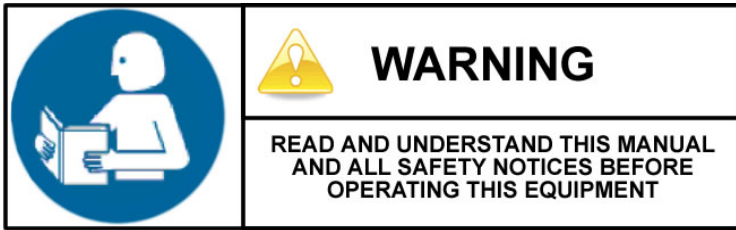
Author: Source Technologies.

NOTICE

To the best of our knowledge the information in this publication is accurate; however Source Technologies does not assume any responsibility or liability for the accuracy or completeness of, or consequences arising from, such information. This document is intended for informational purposes only. Mention of trade names or commercial products does not constitute endorsement or recommendation for use by Source Technologies. Final determination of the suitability of any information or product for use contemplated by any user, and the manner of that use, is the sole responsibility of the user. We recommend that anyone intending to rely on any recommendation of materials or procedures mentioned in this publication should satisfy himself as to such suitability, and that he can meet all applicable safety and health standards.

All trademarks and registered trademarks appearing in this document are the property of their respective owners.

Important Safety Information



This kiosk is intended for indoor use only.

All service procedures should be done by properly trained and qualified service personnel.

Any on-site assembly required during the installation process must be performed by properly trained and qualified service personnel.

The kiosk must be fixed firmly in place by securing the security cabinet to the floor using the supplied wedge anchors.

The kiosk must be connected to a properly grounded and appropriately rated AC receptacle using the supplied cord set.

The kiosk must be disconnected from the AC power supply before connecting signal cables to a host computer.

NOTE: This equipment has been tested and found to comply with the limits for a Class A digital device, pursuant to Part 15 of the FCC rules. These limits are designed to provide reasonable protection against harmful interference when the equipment is operated in a commercial environment. This equipment generates, uses and can radiate radio frequency energy and, if not installed and used in accordance with the instruction manual, may cause harmful interference to radio communications. Operation of this equipment in a residential area is likely to cause harmful interference in which case the user will be required to correct the interference at his own expense.

This Class A digital apparatus complies with Canadian ICES-003.
Conforme Canada NMB-003, Classe A

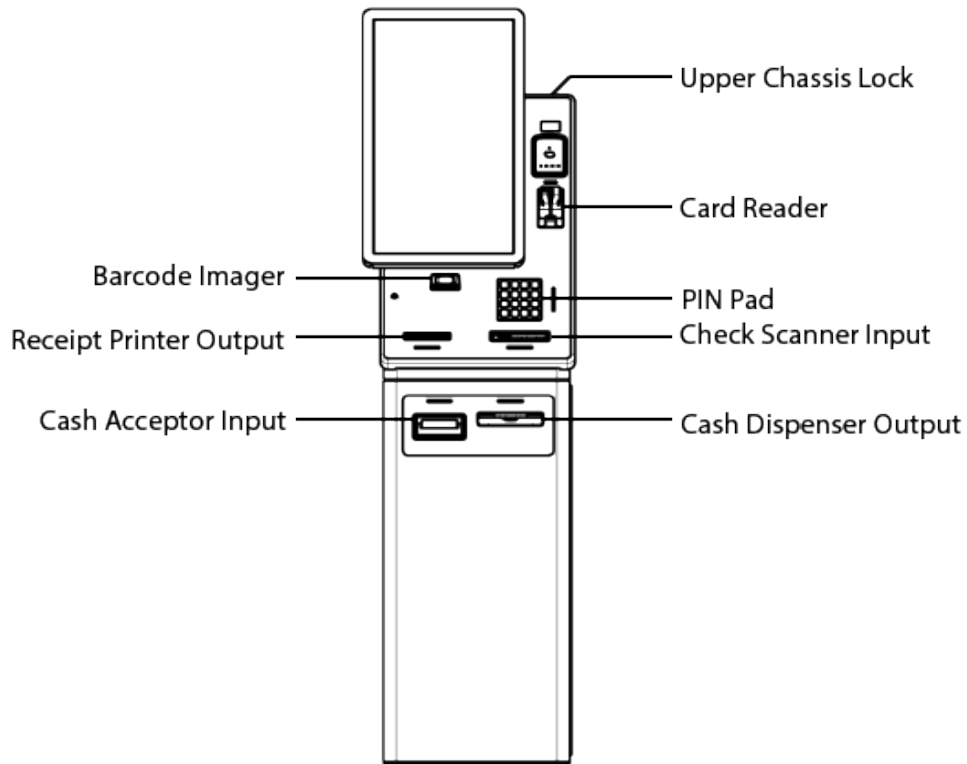
This device complies with the requirements of UL2361 for a Custom Built Kiosk.

Table of Contents

8 Series

Hardware Verification Procedure.....	1
I. Getting Started.....	2
II. Image Installation.....	3
III. Opening Device Tester.....	3
IV. Hardware Tests.....	4
1. Pin Pad Test.....	4
2. Card Reader Test.....	5
3. Check Scanner Test.....	6
4. Cash Handlers Test.....	9
5. Barcode Imager Test.....	14
6. Receipt Printer Test.....	15
7. Kiosk Controller Test.....	16
V. Final Steps.....	17

8 Series Hardware Verification Procedure



Tools and Material Required

USB Keyboard (included in kiosk accessory kit)

Key for access to upper chassis (included in kiosk accessory kit)

Key for access to cash box (included in kiosk accessory kit)

Magnetic Test Card (included in kiosk accessory kit)

Personal and Business Size Test Checks (included in kiosk accessory kit)

Receipt Printer Paper (included in kiosk accessory kit)

2.5mm Hex Wrench

Scope

This procedure applies to the following components:

1. Cash Acceptor
2. Check Scanner
3. PIN Pad
4. Barcode Imager
5. Card Reader
6. Receipt Printer
7. Electronic Combination Lock

I. Getting Started

- Do not begin the hardware verification test until all necessary installation procedures are complete.
- At the rear of the kiosk, use a 2.5mm hex tool to remove the four screws that secure the UPS cover and remove the cover.
- Use the key provided in the included accessories kit to unlock the upper chassis.
- Connect the USB Keyboard to any available USB port on the computer. The computer is located inside the upper chassis and attached to the rear of the display.
- Using the procedure attached to the front of the kiosk, unlock the lower security cabinet.
- **IMPORTANT:** Verify that the Ethernet cable is not connected to the kiosk.
- Connect the power cord to an AC Outlet and the Kiosk will auto start. If you have a UPS connected to the kiosk, plug the power cord into an AC Outlet and press the Power button on the UPS.
- The kiosk will begin the boot process.

II. Image Installation

NOTE: OS installation only occurs on the first boot of the kiosk when received from the factory.

If the kiosk has already been booted once and the OS is installed, go to Section III of this procedure.

When the kiosk boots for the first time, the kiosk OS will be installed.

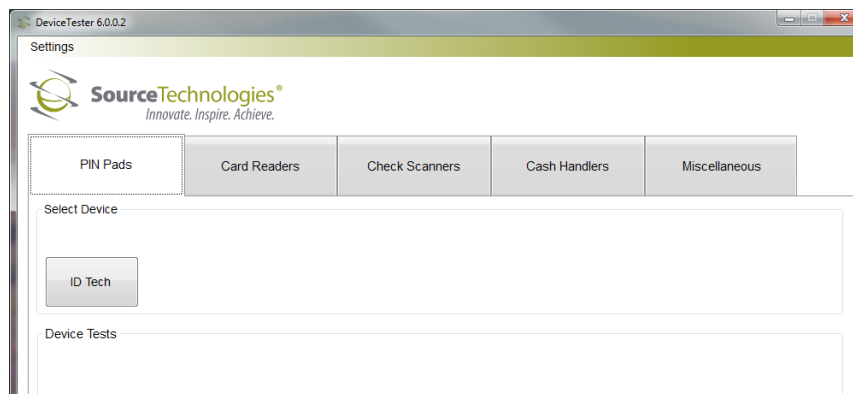
See separate Image Installation Procedure for details on image installation.

III. Opening Device Tester

Open the ST Device Tester application from the Desktop Window (see blue arrow).



When executed, the Device Tester application will appear as shown at right.

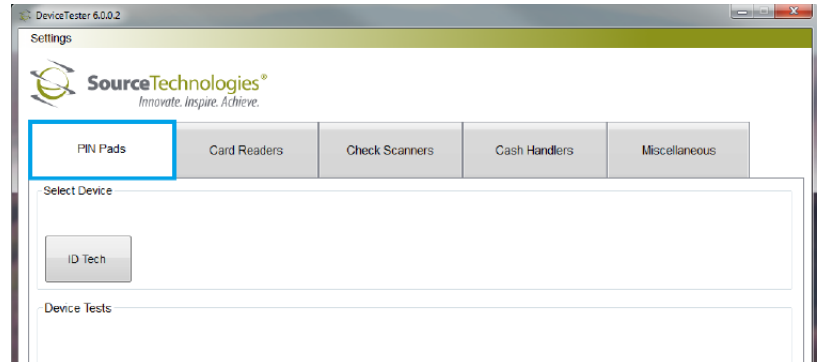


IV. Hardware Tests

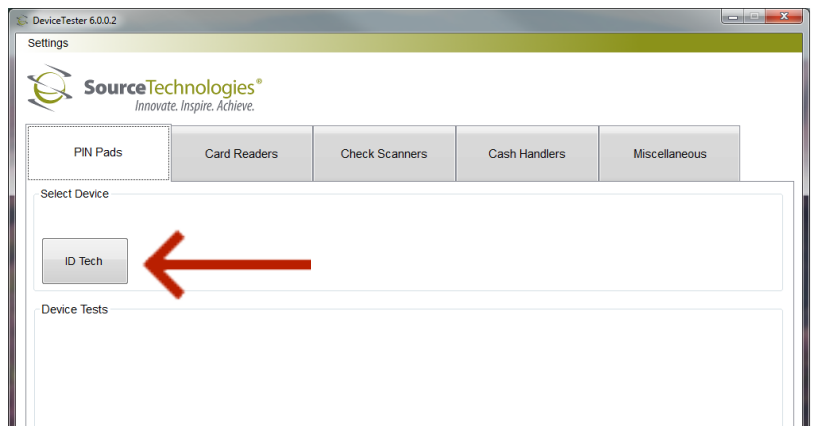
Perform each test listed in this section to verify the functionality of the kiosk hardware.

1. Pin Pad Test

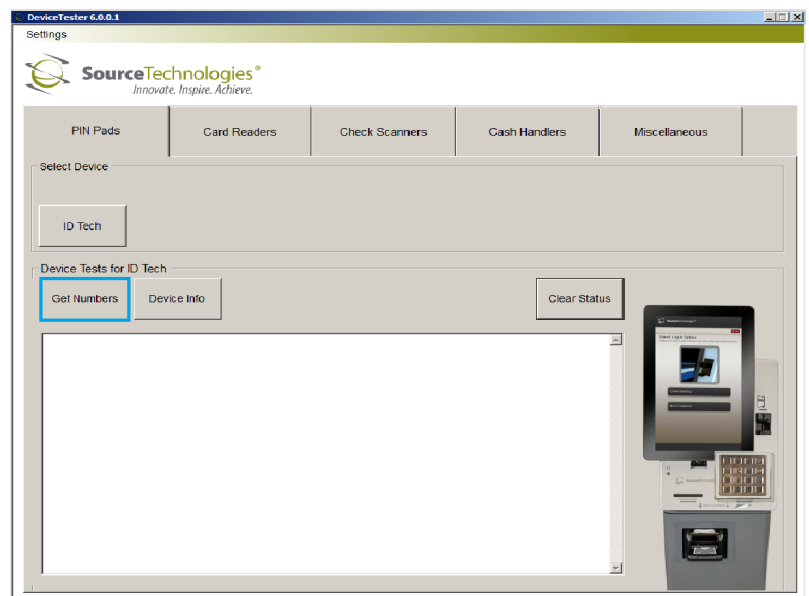
Tap the **PIN Pads** button indicated by the blue box.



Tap the **ID Tech** button indicated by the arrow to start the PIN Pad test.

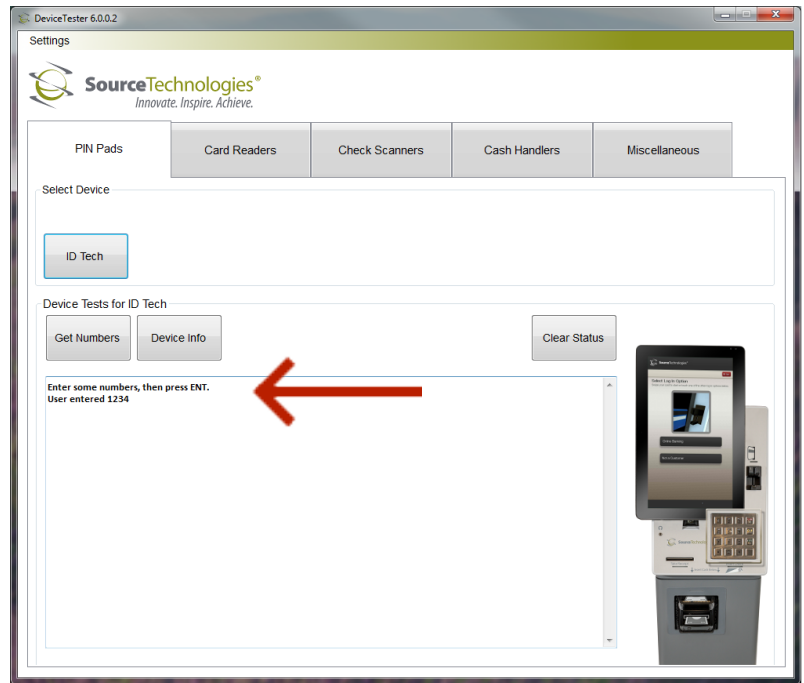


Tap the **Get Numbers** button.



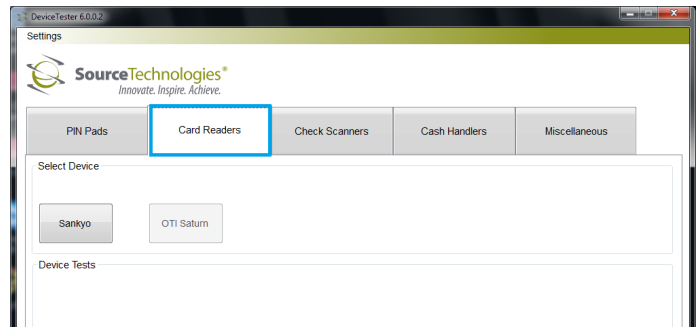
At the PIN Pad located on the front of the kiosk, press four number buttons and press the **ENT** button.

The value of the buttons pressed should be displayed in the IDTech PIN Pad window as shown below.

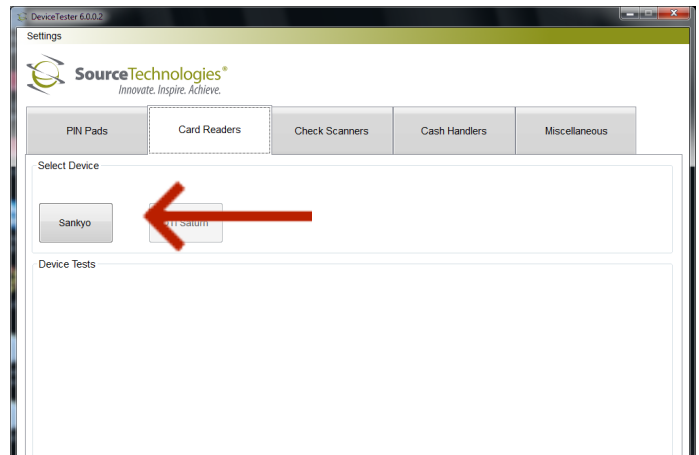


2. Card Reader Test

Tap the **Card Readers** button indicated by the blue box.

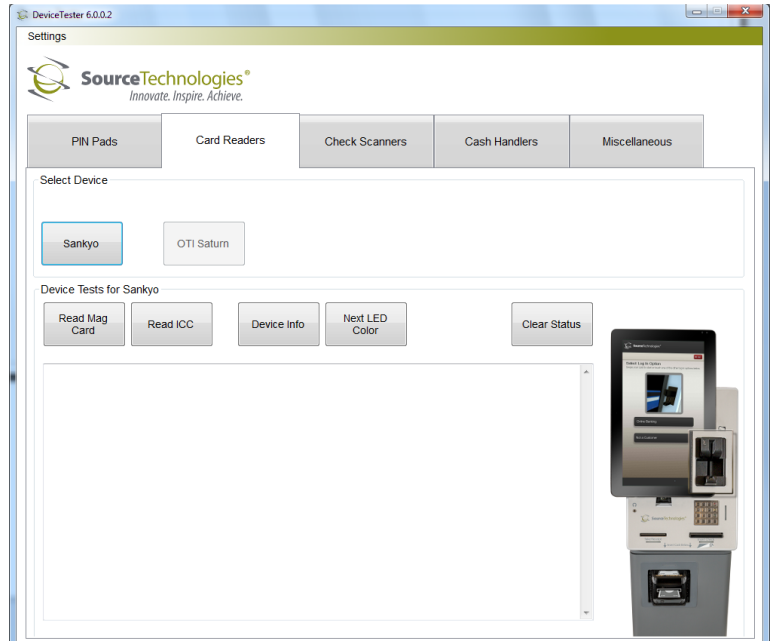


Tap the **Sankyo** button indicated by the arrow to start the card reader test.

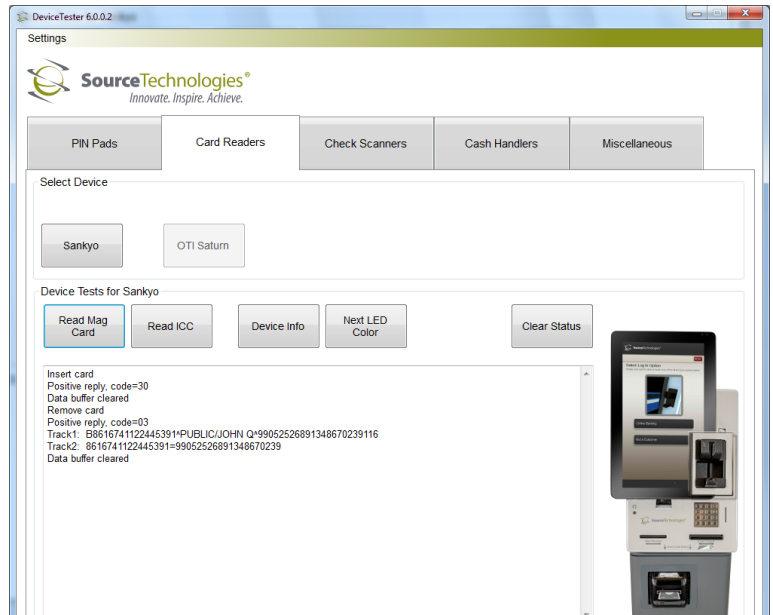


Tap the **Read Mag Card** button
Using the mag test card provided in the kiosk accessory kit, test the card reader by inserting the card into the card reader and then removing it.

NOTE: The card should be oriented as shown in the graphic underneath the card reader.

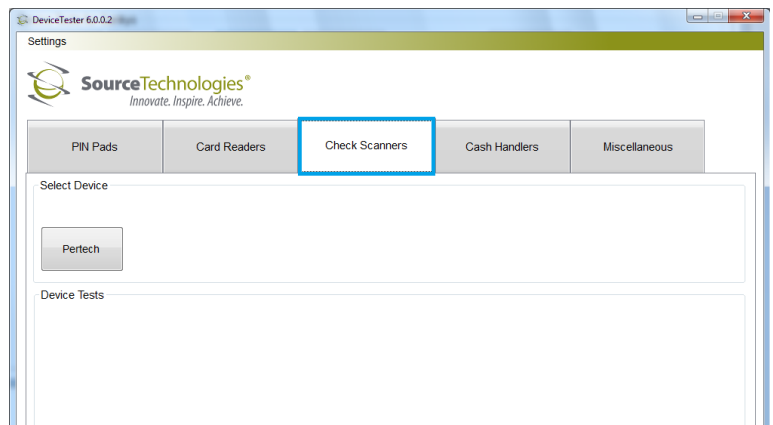


The data displayed in the card reader test window should match the data listed on the test card for each track.

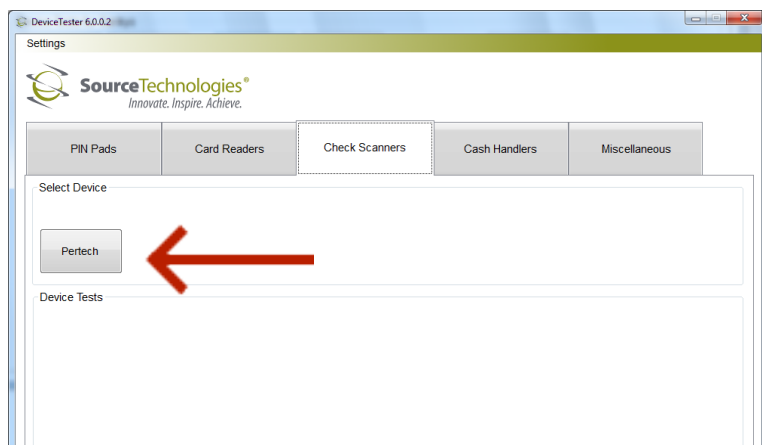


3. Check Scanner Test

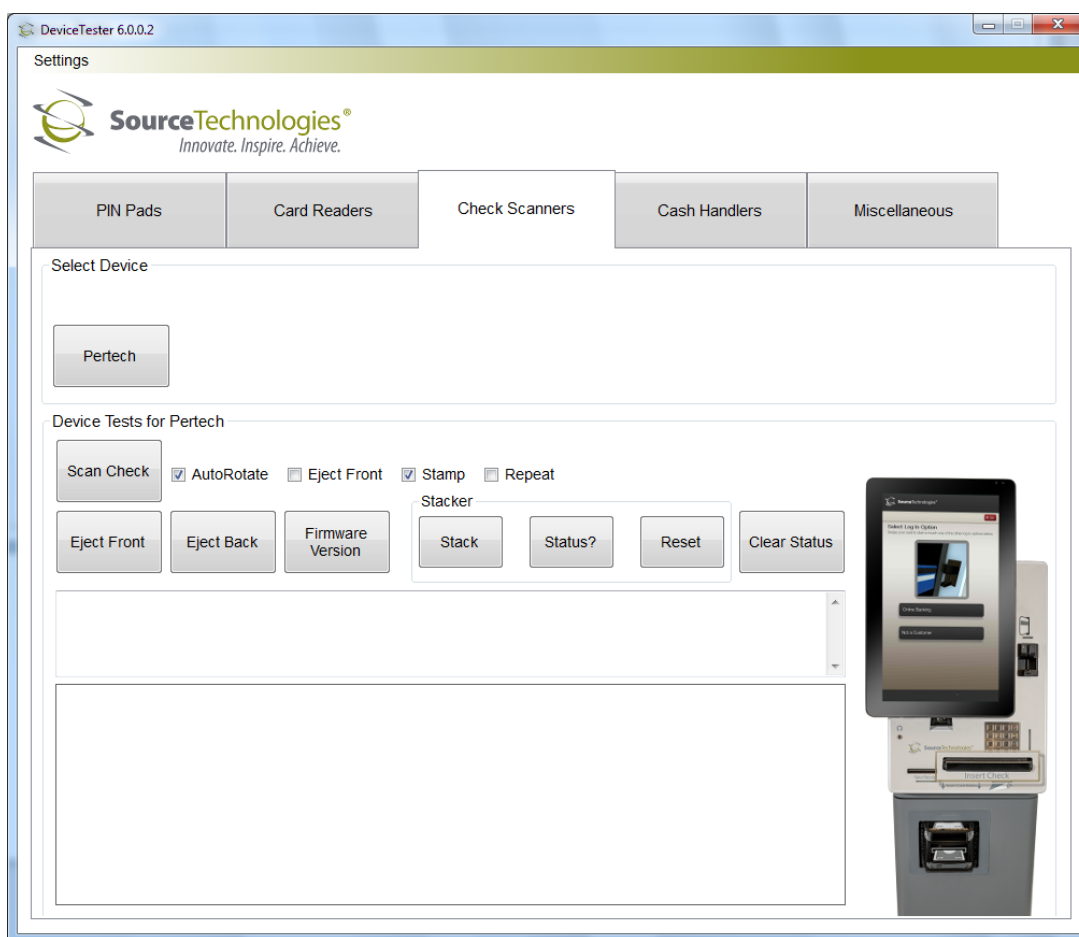
Tap the **Check Scanners** button indicated by the blue box.



Tap the **Pertech** button indicated by the arrow to start check scanner test.



Verify that the AutoRotate box is checked and then tap the **Scan Check** button.



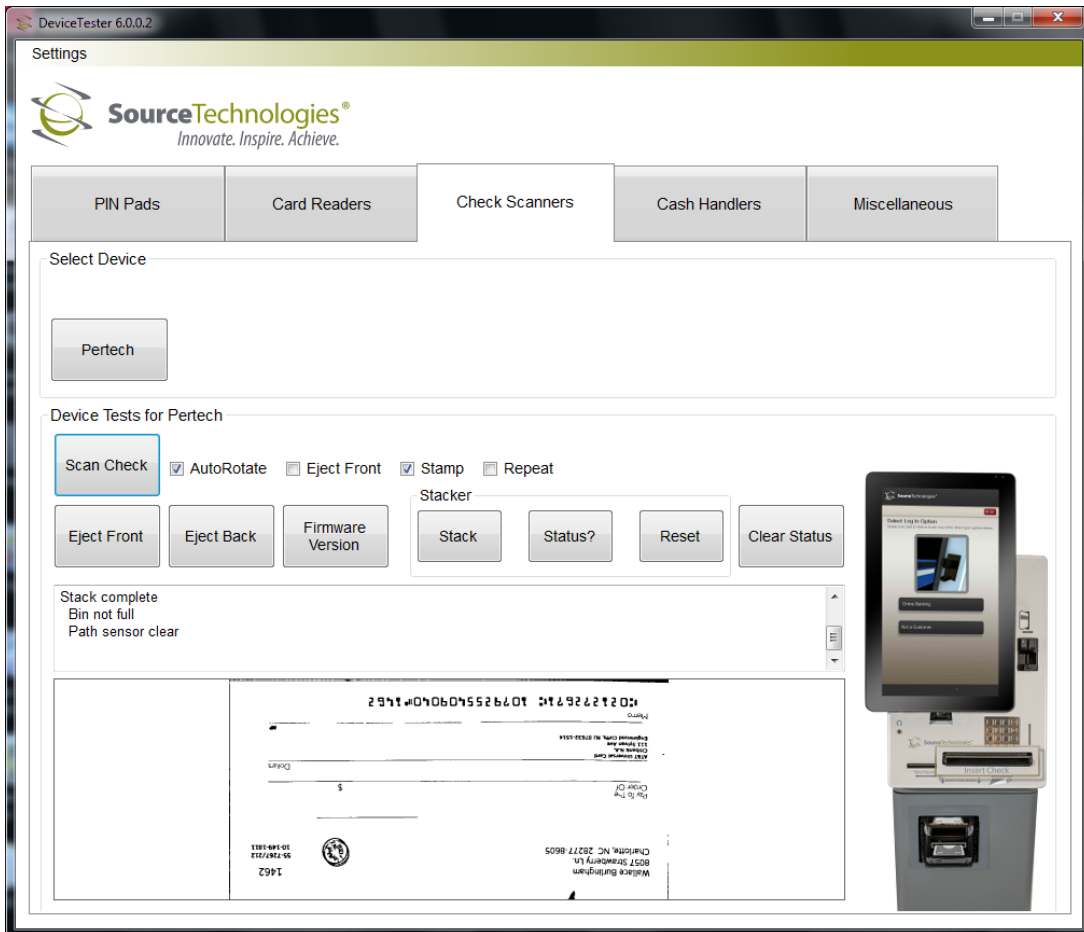
Insert a personal size check (the smaller of the two checks provided in the accessory kit) into the check scanner.

Note: The MICR line of the check should be oriented down and to the right as shown in the graphic below the check scanner input.

The MICR line data should be shown just below Insert Check and the check image should be displayed.

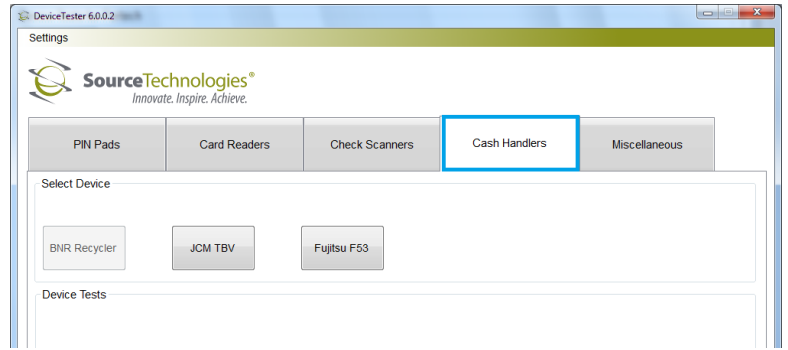
Verify that the checks have been stacked properly in the kiosk.

Repeat the procedure above with the business size check (larger of the two checks provided in the accessory kit).

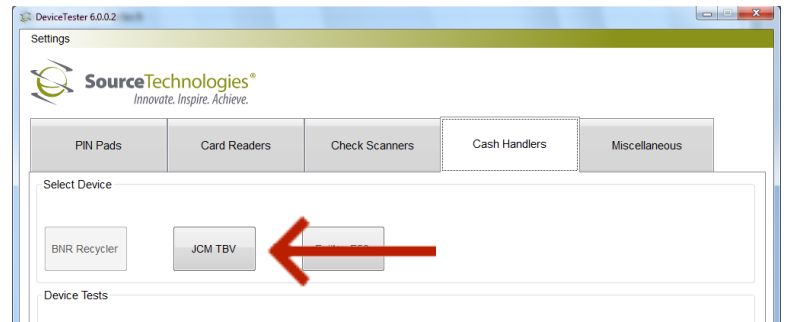


4. Cash Handlers Test

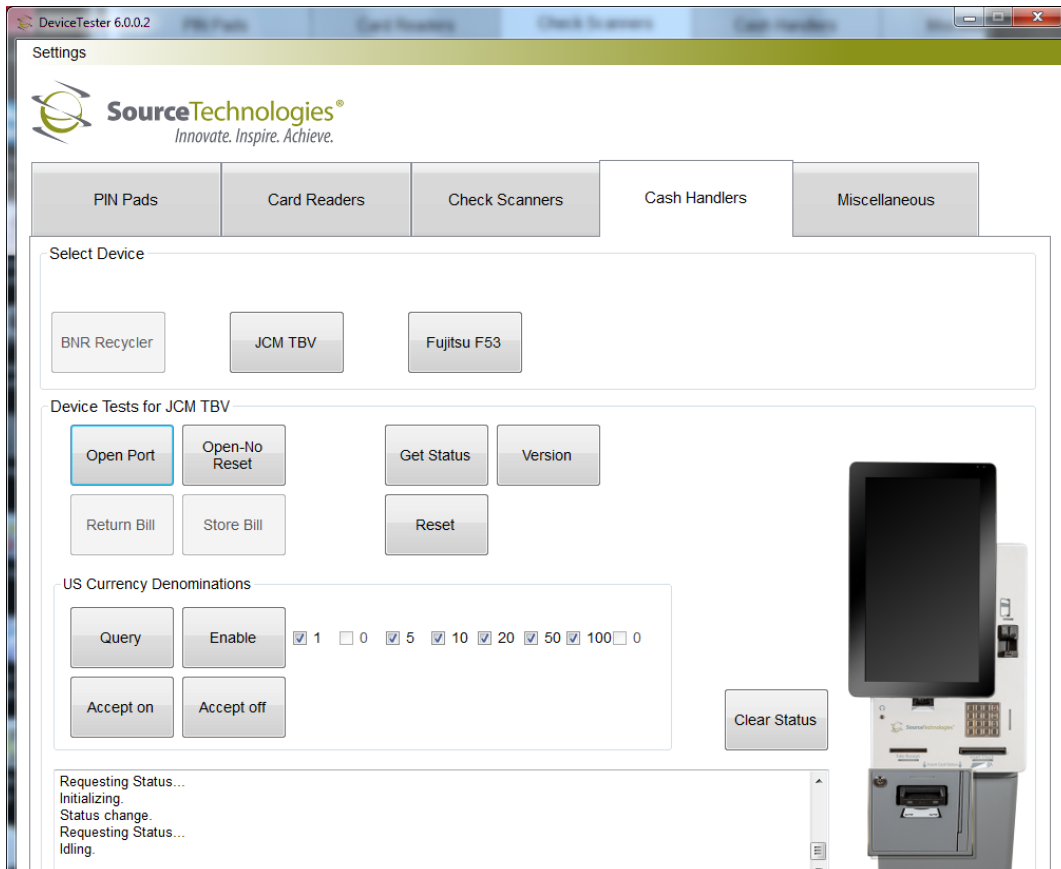
Tap the **Cash handlers** tab indicated by the blue box.



Tap the **JCM TBV** button indicated by the arrow to start the cash acceptor test.



Tap the **Open Port** button to initialize the cash acceptor.



When the status of the cash acceptor is displayed as **Idling** and the green lights are lit on the cash acceptor bezel, the acceptor is ready to accept cash.

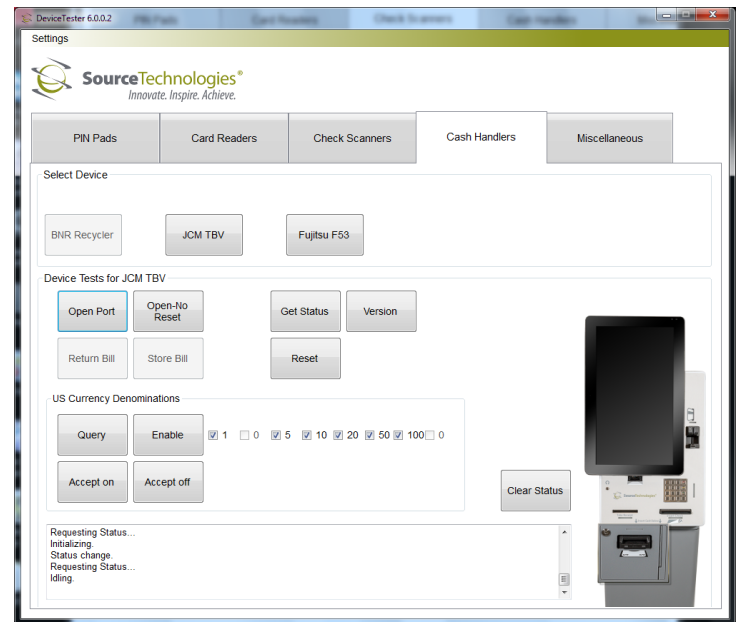
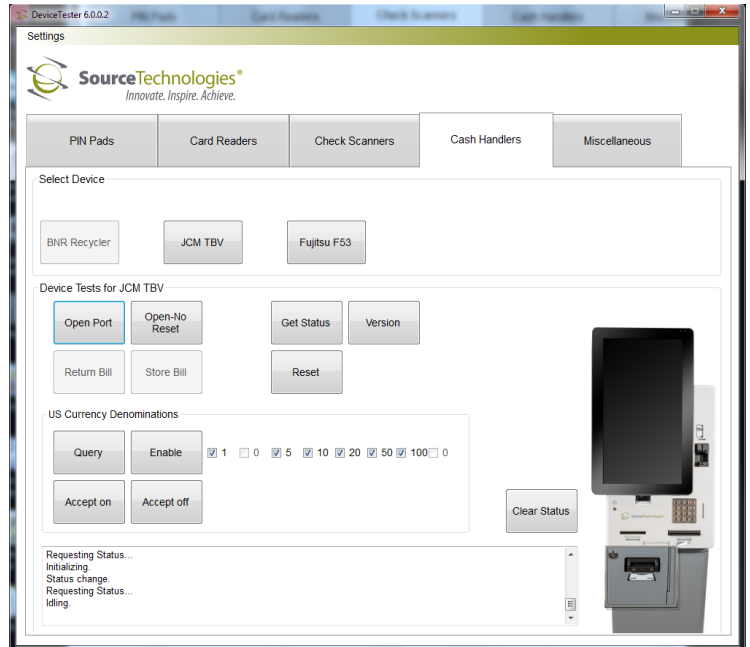
Insert a bill into the cash acceptor and note the value shown beside **Escrow** in the test window. The value should match the value of the bill inserted.

Tap **Return Bill** and the previously inserted bill will be returned. Verify that the bill is held in place and does not fall to the ground when returned.

Insert another bill into the cash acceptor and note that the value shown beside **Escrow** matches the inserted bill.

Tap **Store Bill** and the bill will be stored in the cash box.

Tap **Accept off** to exit cash accept mode.

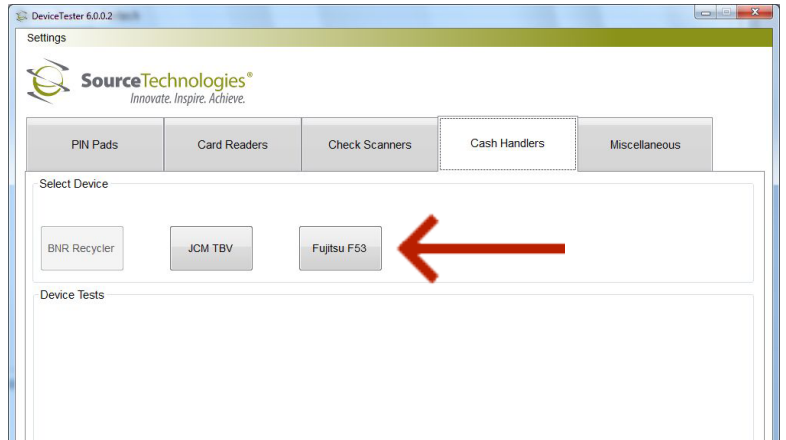


To retrieve the cash stored in the cash box:

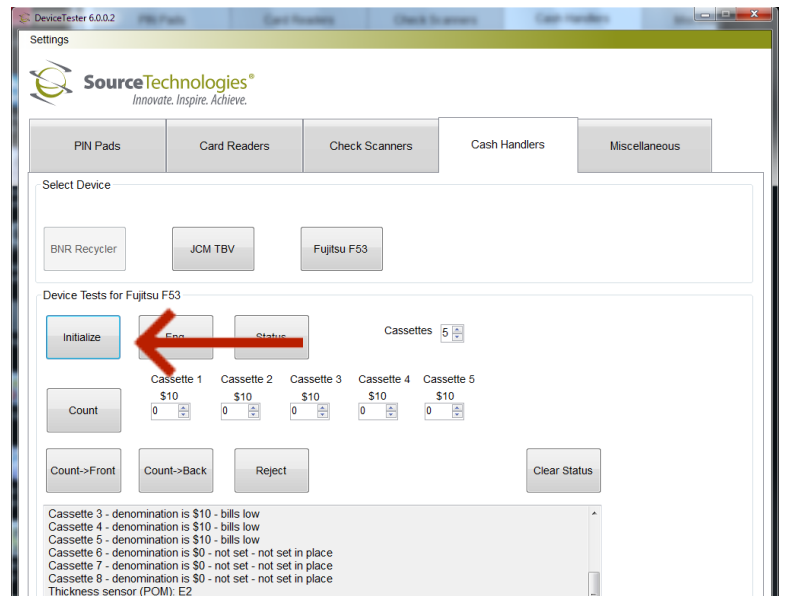
- In the lower security cabinet, move the blue lever on the front of the cash box to the left.
- Pull the cash box out by the blue handle.
- Place the cash box on its side with the lock up and to the left.
- Use the cash acceptor box key (round key) included in the kiosk accessory box to unlock the cash box.
- Lift up on the cash box lid and remove cash from box.
- Close lid and re-lock.

Replace cash box and push in until it locks in place.

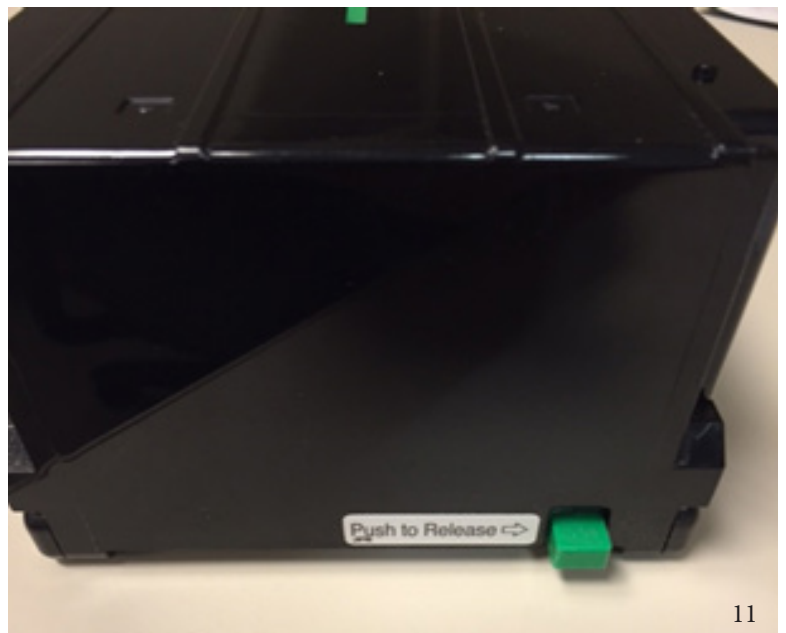
Tap the **Fujitsu F53** button indicated by the arrow to start the cash dispenser test.



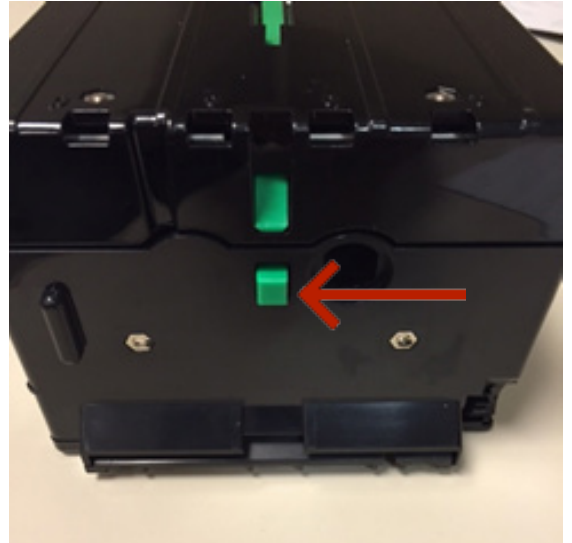
Tap the **Initialize** button to start the F-53.



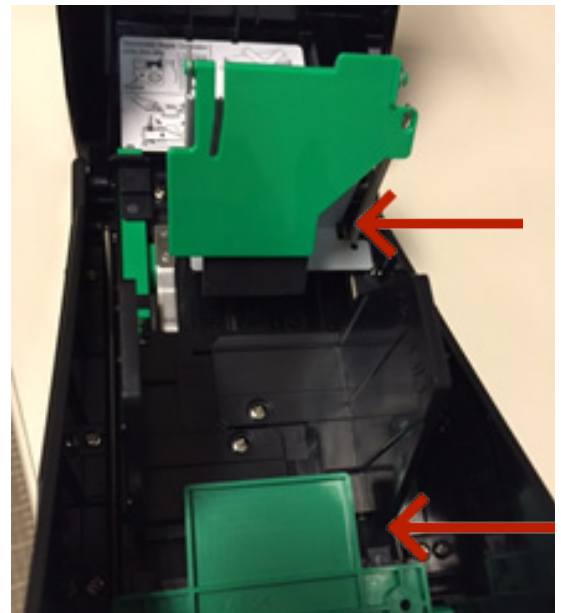
Push the green button on the front of the cassette box indicated by the arrow to remove cassette box.



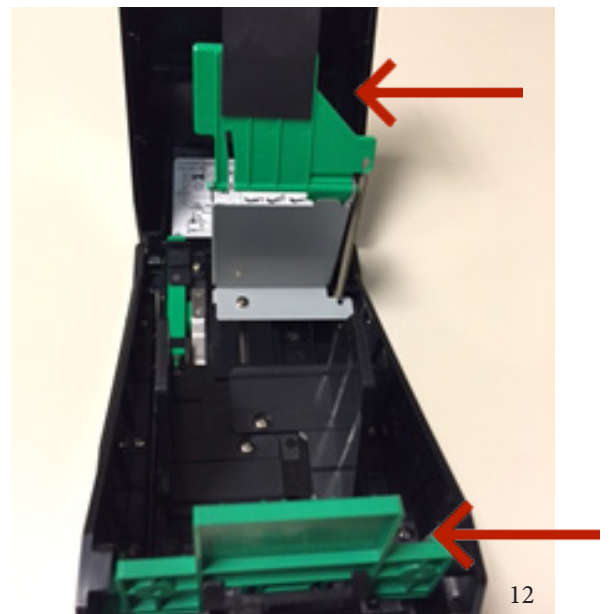
Push the green button on the back indicated by the arrow to open the cassette box.



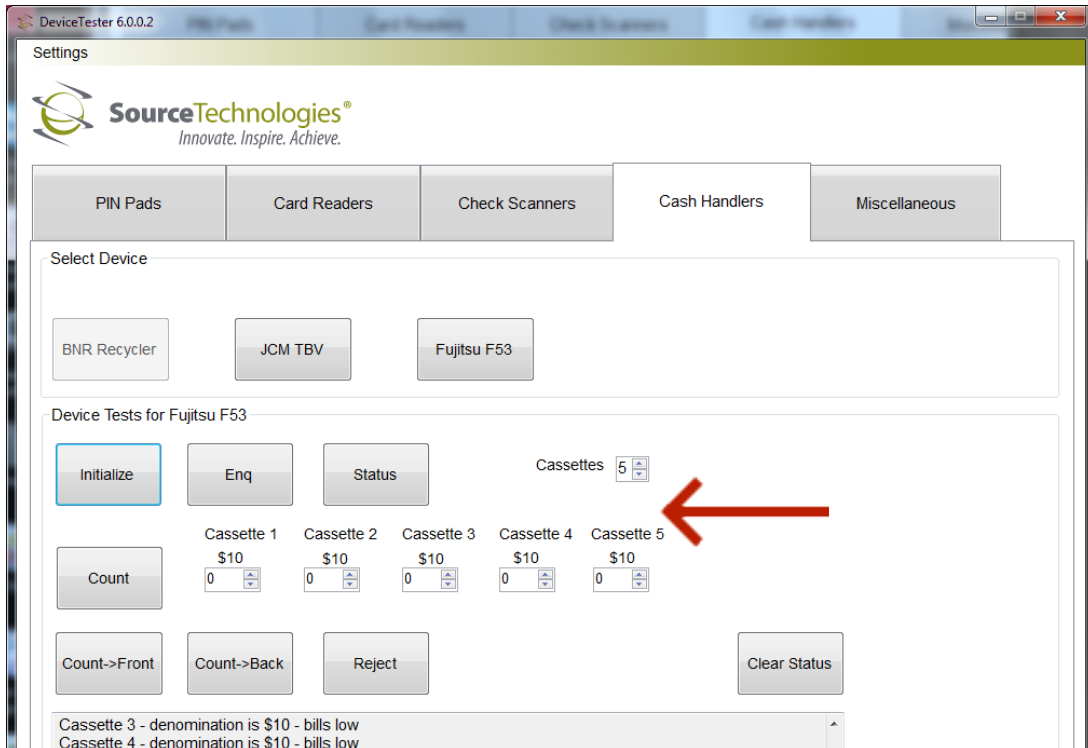
Lift up the back pressure plate and the front pressure plate to load money indicated by the arrows.



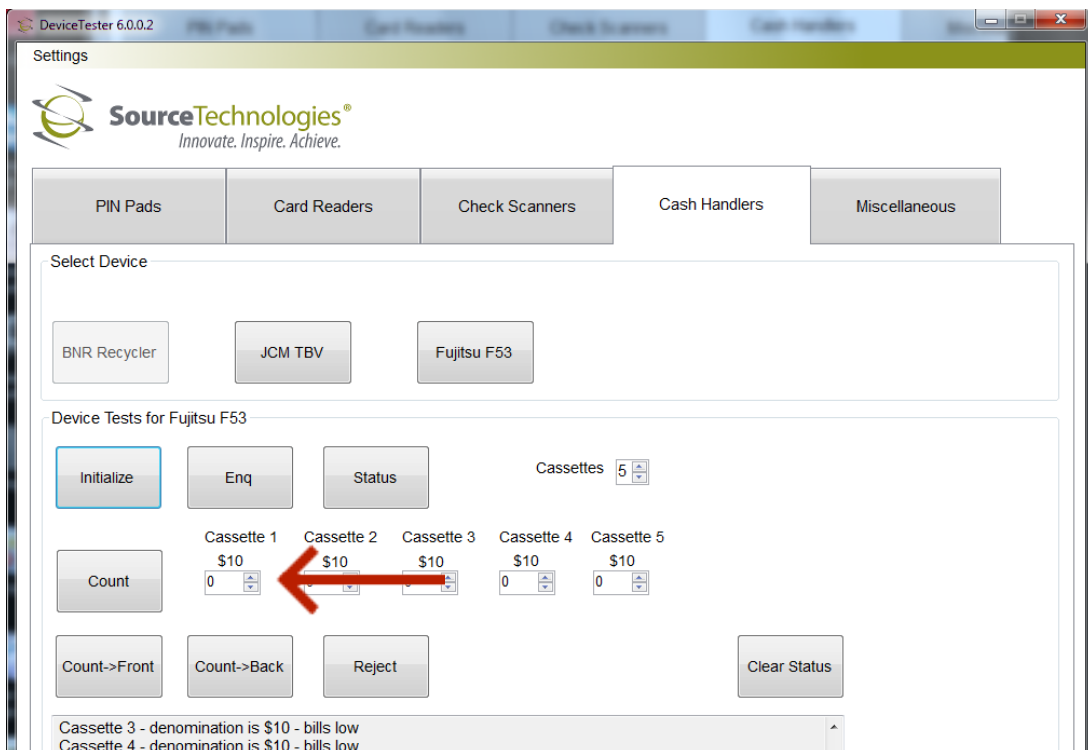
Return pressure plates to original position and install cassette into correct location in the dispenser.



Make sure the Cassettes box matches how many cash boxes you have installed.

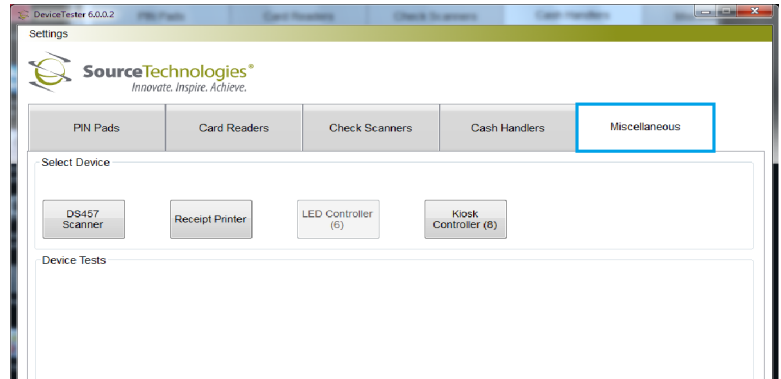


Change the amount of bills you want to dispense under Cassette 1 and tap the **count** button. Note that Cassette 1 is the very top cash box of the f-53.

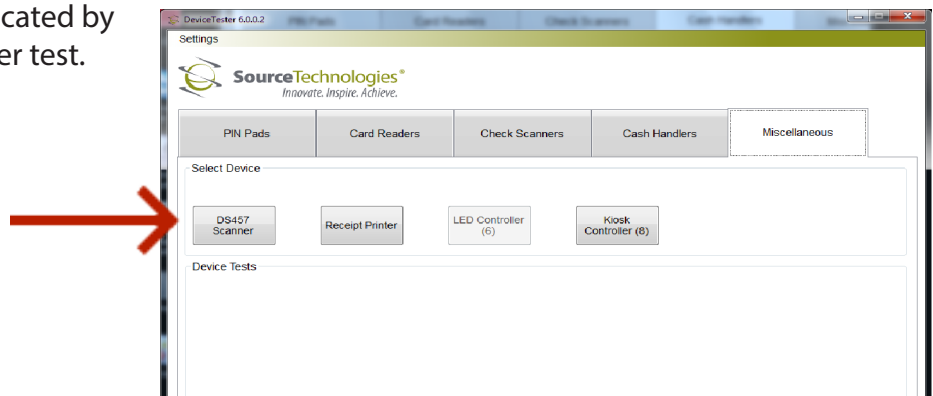


5. Barcode Imager Test

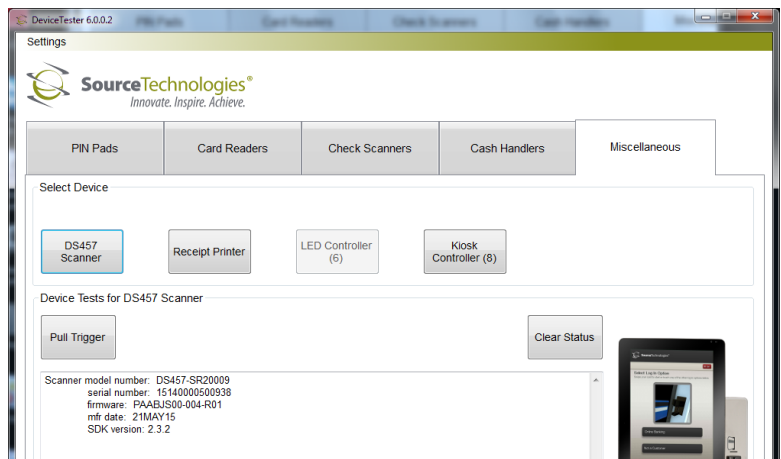
Tap the **Miscellaneous** button indicated by the blue box.



Tap the **DS457 Scanner** button indicated by the arrow to start the barcode imager test.



Tap the **Pull Trigger** button and verify that the imager's aiming laser has lit.

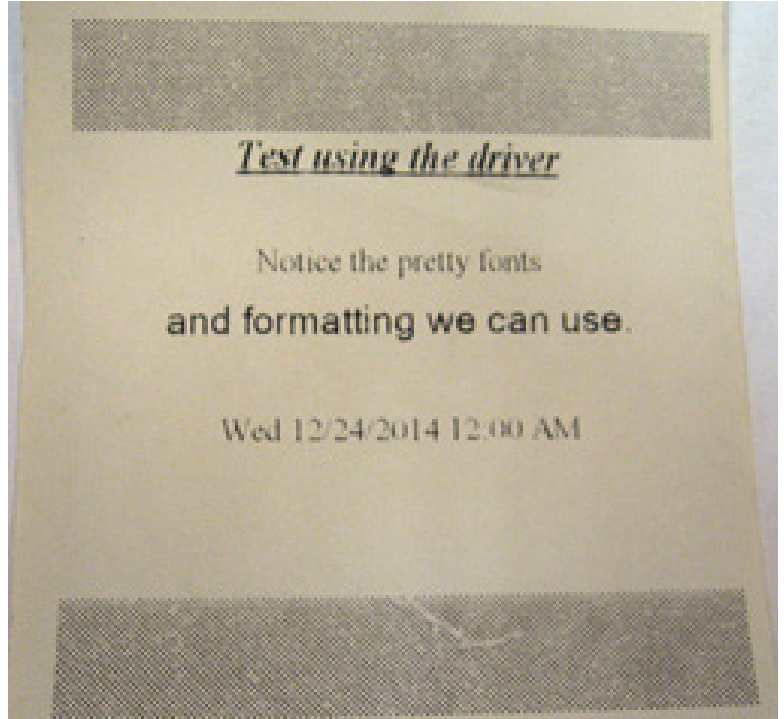


Orient the magnetic test card so that the barcode image on the front of the card is facing up and the card is parallel with the floor. Move the barcode image underneath the barcode scanner so that it is in the zone lit by the aiming laser.

When the barcode is read, you will hear a beep and the aiming laser will turn off. Verify that the information listed in the test window matches the data listed underneath the barcode on the test card.

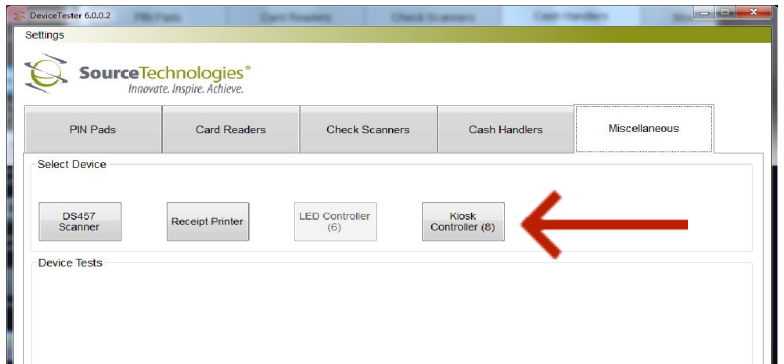
A receipt like the one shown at right should be printed when the **Use Driver** is tapped.

Tap **Exit** to close the receipt printer test.



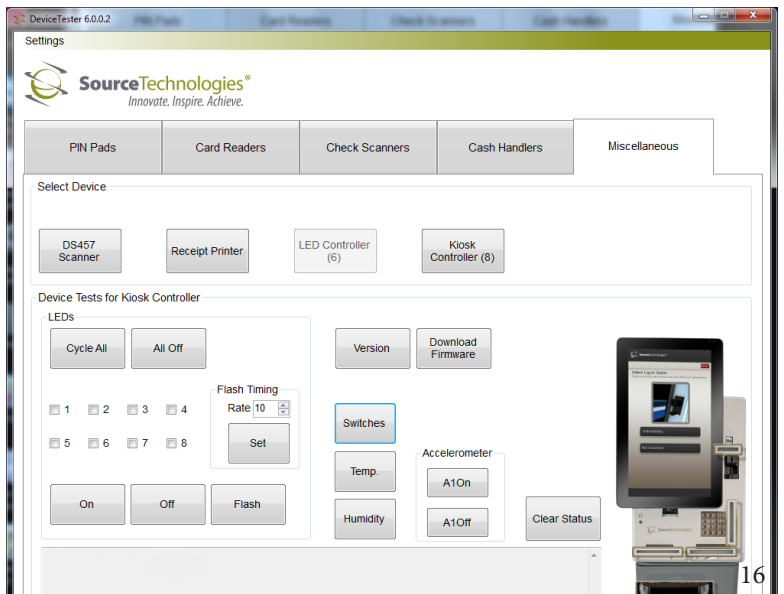
7. Kiosk Controller Test

Tap the **Kiosk Controller** button indicated by the arrow to start the LED Controller test.

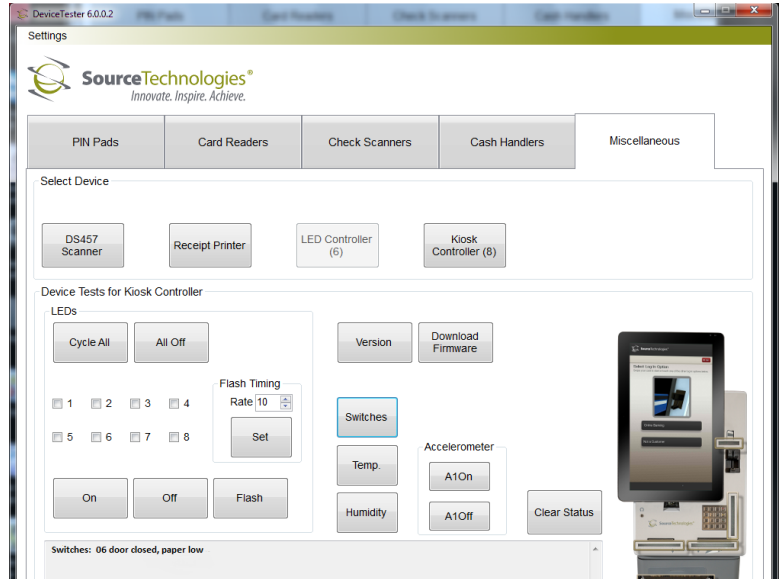


Tap the **Cycle All** button.

Verify that all LED's located on the kiosk are flashing.



Tap the **Switches** button to check the status of the door and paper sensor. Should show a status for the door and Receipt paper.



V. Final Steps

1. Tap the **Windows Start** button and shutdown the operating system.
2. After the OS has been properly shutdown, disconnect the power cord from the kiosk. If you have a UPS, power off the UPS and disconnect its AC power cord.
3. Connect the Ethernet cable to the kiosk's Ethernet port (located at lower left-hand corner of security cabinet.) If UPS is installed remove the UPS cover and connect the Ethernet cable.
4. Reconnect the power cord to the kiosk to power it back on. If you have a UPS then connect the UPS AC power cord to an AC outlet and power on the UPS.
5. Replace the UPS cover and use the 2.5mm hex tool to install the four screws that were previously removed.

Hardware Verification Test Complete