

# SRS

door entry systems

## price list

February 2008

*use in conjunction with SRS 2007 catalogue*



tel: 0208 621 6210

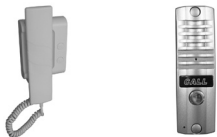
fax: 0208 621 6211

[sales@srsdoentry.com](mailto:sales@srsdoentry.com) [www.srsdoentry.com](http://www.srsdoentry.com)

842-850 Coronation Road, Park Royal, London, NW10 7QJ

# audio kits

## SD 1 phone audio kit (page 4)



STOCK CODE	DESCRIPTION	LIST PRICE
SDK-7D6S	1 way Audio Entry Kit - AR7 handset and D6S panel	43.83
SDK-7D6SL	1 way Audio Entry Kit - AR7 handset and D6S panel & release	74.90
SD720AR7	2 wire audio telephone, intercom facility & psu	16.50
SD720D6S	2 wire slim surface aluminium audio entry panel	32.20

## slimline kits (page 4)



STOCK CODE	DESCRIPTION	LIST PRICE
KETV01	SRS slimline 1 phone door entry kit	66.09
KETV02	SRS slimline 2 phone door entry kit	79.08
KETV03	SRS slimline 3 phone door entry kit	91.88
KETV04	SRS slimline 4 phone door entry kit	101.53
KETV06	SRS slimline 6 phone door entry kit	125.53
KETV08	SRS slimline 8 phone door entry kit	149.53
KETV10	SRS slimline 10 phone door entry kit	173.49
KETV12	SRS slimline 12 phone door entry kit	197.49
VST100	slimline audio power supply	28.69
001307	slimline desk mount kit for ET100 telephone	13.33
ET100	slimline telephone with full base 4+1	15.00

## doorpoint audio kit (page 5)



STOCK CODE	DESCRIPTION	LIST PRICE
K5101S	01 way door VR entry kit, S Steel panel surface	187.79
5101S	01 button stainless steel audio panel - surface	115.00
AN9102S	"SRS telephone with full base 4+1, AN9102 replacement"	16.67
9307.1	SRS Power supply 12v ac 0.5A , 12v dc 0.5A DIN	45.00
9307.2	SRS lock release timer DIN	21.00

## doorpoint audio kit with keypad (page 5)



STOCK CODE	DESCRIPTION	LIST PRICE
K5104S	01 way door entry kit, S Steel panel with keypad surface	229.59
5101/04S	01 button stainless steel audio panel with keypad - surface	180.00
AN9102S	SRS telephone with full base 4+1, AN9102 replacement	16.67
9307.1	SRS Power supply 12v ac 0.5A , 12v dc 0.5A DIN	45.00
9307.2	SRS lock release timer DIN	21.00

## vandal resistant kits with engravable panels (page 6)



STOCK CODE	DESCRIPTION	LIST PRICE
K4101	"01 way VR door entry kit, S Steel panel engravable"	187.79
K4101/04	"01 way VR door entry kit, S Steel panel, keypad engravable"	291.34
AN9102S	SRS telephone with full base 4+1, AN9102 replacement	16.67
9307.1	SRS Power supply 12v ac 0.5A , 12v dc 0.5A DIN	45.00
9307.2	SRS lock release timer DIN	21.00

## vandal resistant kits with name window panels (page 7)



STOCK CODE	DESCRIPTION	LIST PRICE
K4201	"01 way VR door entry kit, S Steel panel name window"	194.63
K4202	"02 way VR door entry kit, S Steel panel name window"	226.80
K4203	"03 way VR door entry kit, S Steel panel name window"	258.98
K4204	"04 way VR door entry kit, S Steel panel name window"	291.16
K4205	"05 way VR door entry kit, S Steel panel name window"	323.33
K4406	"06 way VR door entry kit, S Steel panel name window"	369.76
K4407	"07 way VR door entry kit, S Steel panel name window"	401.94
K4408	"08 way VR door entry kit, S Steel panel name window"	434.11
K4409	"09 way VR door entry kit, S Steel panel name window"	466.29
K4410	"10 way VR door entry kit, S Steel panel name window"	498.47
ACCESSORIES		
AN9102S	SRS telephone with full base 4+1, AN9102 replacement	16.67
9307.1	SRS Power supply 12v ac 0.5A , 12v dc 0.5A DIN	45.00
9307.2	SRS lock release timer DIN	21.00

## vandal resistant kits with name window panels & 40 code tenant keypad (page 7)



STOCK CODE	DESCRIPTION	LIST PRICE
K4201/04	"01 way VR door entry kit, S Steel panel, keypad name wind."	298.18
K4402/04	"02 way VR door entry kit, S Steel panel, keypad name w"	344.60
K4403/04	"03 way VR door entry kit, S Steel panel, keypad name wind."	376.78
K4404/04	"04 way VR door entry kit, S Steel panel, keypad name wind."	408.96
K4405/04	"05 way VR door entry kit, S Steel panel, keypad name wind."	441.13
ACCESSORIES		
AN9102	Wall phone, 2 button, standard - electronic call only white	16.58
9307.1	SRS Power supply 12v ac 0.5A , 12v dc 0.5A DIN	45.00
9307.2	SRS lock release timer DIN	21.00

# audio kits - telephones - power supplies

## vandal resistant kits (page 7)

with name window panels & proximity reader cutout



STOCK CODE	DESCRIPTION	LIST PRICE
K4101/08	"01 way VR door entry kit, S Steel panel, prox engravable"	216.29
K4101/08	01 way VR door entry kit, S Steel panel, prox engravable	184.42
K4201/08	"01 way VR door entry kit, S Steel panel, prox name wind."	223.13
K4402/08	"02 way VR door entry kit, S Steel panel, prox name wind."	269.55
K4403/08	"03 way VR door entry kit, S Steel panel, prox name wind."	301.73
K4404/08	"04 way VR door entry kit, S Steel panel, prox name wind."	333.91
K4405/08	"05 way VR door entry kit, S Steel panel, prox name wind."	366.08
ACCESSORIES		
AN9102	Wall phone, 2 button, standard - electronic call only white	16.58
9307.1	SRS Power supply 12v ac 0.5A, 12v dc 0.5A DIN	45.00
9307.2	SRS lock release timer DIN	21.00

## standard telephone (page 8)



STOCK CODE	DESCRIPTION	LIST PRICE
AN9102S	SRS telephone with full base 4+1, AN9102 replacement	16.67
001307	SRS desk mount kit for AN9102S telephone	13.33

## alternative telephones (page 8)



STOCK CODE	DESCRIPTION	LIST PRICE
AN7320U	Wall phone, 3 button, Series 70 UNIVERSAL white	23.50
AN7346	Intercom 8 button module for AN7320 phone	16.00
AV1407-002	Wall phone, 2 button, T-Line 1+n white	11.56
AV1407-050	T-Line 6 button module, switch & 2 LEDs white	38.51
AV1407-001	Wall phone, 2 button, T-Line white	11.56
AN8062	Desk kit for AN7320 phone	40.98
AN7577S	SRS telephone 6+1, door monitor LED, mute with LED	30.00

## telephone accessories (page 8)

STOCK CODE	DESCRIPTION	LIST PRICE
5223	12v dc Piezo Buzzer - 4.7kHz - 75dB @ 0.3m	2.25
5224	9v dc mini buzzer on leads	2.25
AN7817	SAU Additional ringer for tone or buzzer call	13.48
314410	Inductive earpiece - for hard of hearing	48.00

## CW1308 cable (page 8)

STOCK CODE	DESCRIPTION	LIST PRICE
112504	CW1308 04 twisted pair telephone cable 100m reel	38.97
112506	CW1308 06 twisted pair telephone cable 100m reel	61.98
112510	CW1308 10 twisted pair telephone cable 100m reel	120.00
112520	CW1308 20 twisted pair telephone cable 100m reel	212.73

## speaker / amplifier

STOCK CODE	DESCRIPTION	LIST PRICE
5150M	Speaker / amplifier Universal (for systems pre Jan 1997)	50.00
5153M	Speaker / amplifier - replaces 5152M - A254R0	50.00

These items are not listed in the catalogue

## audio power supplies (page 9)



STOCK CODE	DESCRIPTION	LIST PRICE
9307.1	SRS Power supply 12v ac 0.5A, 12v dc 0.5A DIN	45.00
9307.2	SRS lock release timer DIN	21.00

## 2 entrance relay (page 9)

STOCK CODE	DESCRIPTION	LIST PRICE
AK5343	Relay for switching 2 entrance panels	59.90

## audio power supplies (page 9)

in lockable box



STOCK CODE	DESCRIPTION	LIST PRICE
5141	SRS lockable audio power supply with charger	149.00
514108	SRS specialised power supply for 8 phones (1 x 5108)	194.00
514115	SRS specialised power supply for 8 phones (1 x 5115)	305.00
514116	SRS specialised power supply for 16 phones (1 x 5116)	215.00
5141LE	SRS specialised power supply in large enclosure	264.00
5141LE115	SRS specialised power supply for 8 phones (1 x 5115)2 x 9022	420.00
5141LE215	SRS specialised power supply for 16 phones (2 x 5115)	576.00

## telephone connection boards (page 9)

STOCK CODE	DESCRIPTION	LIST PRICE
5108	Distribution board for 8 telephone handsets - unpluggable	45.00
5115	Isolation & secrecy pcb for 8 telephones inc. connectors	156.00
5116	Distribution board for 16 telephone handsets - unpluggable	66.00

# vandal resistant audio panels

## vandal resistant engravable panels (page 10)



STOCK CODE	DESCRIPTION	LIST PRICE
4101	01 button VR S Steel panel, engravable size A	115.00
4102	02 button VR S Steel panel, engravable size A	125.00
4103	03 button VR S Steel panel, engravable size A	135.00
4104	04 button VR S Steel panel, engravable size A	145.00
4105	05 button VR S Steel panel, engravable size A	155.00
4106	06 button VR S Steel panel, engravable size A	165.00
4107	07 button VR S Steel panel, engravable size A	175.00
4108	08 button VR S Steel panel, engravable size A	185.00
4109	09 button VR S Steel panel, engravable size A	195.00
4110	10 button VR S Steel panel, engravable size A	205.00
4311	11 button VR S Steel panel, engravable size D	230.00
4312	12 button VR S Steel panel, engravable size D	240.00
4313	13 button VR S Steel panel, engravable size D	250.00
4314	14 button VR S Steel panel, engravable size D	260.00
4315	15 button VR S Steel panel, engravable size D	270.00
4316	16 button VR S Steel panel, engravable size D	280.00
4317	17 button VR S Steel panel, engravable size D	290.00
4318	18 button VR S Steel panel, engravable size D	300.00
4319	19 button VR S Steel panel, engravable size D	310.00
4320	20 button VR S Steel panel, engravable size D	320.00

All panels listed can be supplied in polished brass, add £30.  
In order to correctly specify the brass panel you require simply change the first digit of the code number from 4 to 6. ie 4101 (stainless steel) becomes 6101 (brass).

## vandal resistant engravable panels (page 10) with 40 code tenant keypad



STOCK CODE	DESCRIPTION	LIST PRICE
4101/04	01 button VR S Steel panel, keypad size A	245.00
4102/04	02 button VR S Steel panel, keypad size A	255.00
4303/04	03 button VR S Steel panel, engravable, Keypad size D	280.00
4304/04	04 button VR S Steel panel, engravable, Keypad size D	290.00
4305/04	05 button VR S Steel panel, engravable, Keypad size D	300.00
4306/04	06 button VR S Steel panel, engravable, Keypad size D	310.00
4307/04	07 button VR S Steel panel, engravable, Keypad size D	320.00
4308/04	08 button VR S Steel panel, engravable, Keypad size D	330.00
4309/04	09 button VR S Steel panel, engravable, Keypad size D	340.00
4310/04	10 button VR S Steel panel, engravable, Keypad size D	350.00
4311/04	11 button VR S Steel panel, engravable, Keypad size D	360.00
4312/04	12 button VR S Steel panel, engravable, Keypad size D	370.00
4313/04	13 button VR S Steel panel, engravable, Keypad size D1	380.00
4314/04	14 button VR S Steel panel, engravable, Keypad size D1	390.00
4315/04	15 button VR S Steel panel, engravable, Keypad size D1	400.00
4316/04	16 button VR S Steel panel, engravable, Keypad size D1	410.00
4317/04	17 button VR S Steel panel, engravable, Keypad size D2	420.00
4318/04	18 button VR S Steel panel, engravable, Keypad size D2	430.00
4319/04	19 button VR S Steel panel, engravable, Keypad size D2	440.00
4320/04	20 button VR S Steel panel, engravable, Keypad size D2	450.00

All panels listed can be supplied in polished brass, add £30.  
In order to correctly specify the brass panel you require simply change the first digit of the code number from 4 to 6. ie 4101/04 (stainless steel) becomes 6101/04 (brass).

## vandal resistant engravable panels (page 10) with 40mm square proximity reader cut out



STOCK CODE	DESCRIPTION	LIST PRICE
4101/08	01 button VR S Steel panel, prox. cutout size A	145.00
4302/08	02 button VR S Steel panel, engravable, prox. size D	170.00
4303/08	03 button VR S Steel panel, engravable, prox. size D	180.00
4304/08	04 button VR S Steel panel, engravable, prox. size D	190.00
4305/08	05 button VR S Steel panel, engravable, prox. size D	200.00
4306/08	06 button VR S Steel panel, engravable, prox. size D	210.00
4307/08	07 button VR S Steel panel, engravable, prox. size D	220.00
4308/08	08 button VR S Steel panel, engravable, prox. size D	230.00
4309/08	09 button VR S Steel panel, engravable, prox. size D	240.00
4310/08	10 button VR S Steel panel, engravable, prox. size D	250.00
4311/08	11 button VR S Steel panel, engravable, prox. size D	260.00
4312/08	12 button VR S Steel panel, engravable, prox. size D	270.00
4313/08	13 button VR S Steel panel, engravable, prox. size D	280.00
4314/08	14 button VR S Steel panel, engravable, prox. size D	290.00
4315/08	15 button VR S Steel panel, engravable, prox. size D	300.00
4316/08	16 button VR S Steel panel, engravable, prox. size D	310.00
4317/08	17 button VR S Steel panel, engravable, prox. size D1	320.00
4318/08	18 button VR S Steel panel, engravable, prox. size D1	330.00
4319/08	19 button VR S Steel panel, engravable, prox. size D1	340.00
4320/08	20 button VR S Steel panel, engravable, prox. size D1	350.00

All panels listed can be supplied in polished brass, add £30.  
In order to correctly specify the brass panel you require simply change the first digit of the code number from 4 to 6. ie 4101/08 (stainless steel) becomes 6101/08 (brass).

## hoods and frames for VR panels (page 10-11)



STOCK CODE	DESCRIPTION	LIST PRICE
3505/35W	Size A Hardwood frame (surface mount) ext 256x142x35	22.50
3505/50W	Size A Hardwood frame (surface mount) ext 256x142x50	24.00
3506/50W	Size D Hardwood frame (surface mount) ext 327x187x50	27.00
3507/50W	Size D1 Hardwood frame (surface mount) ext 355x187x50	36.00
3508/50W	Size D2 Hardwood frame (surface mount) ext 383x187x50	44.00
3509/50W	Size D3 Hardwood frame (surface mount) ext 411x187x50	52.00
3510/50W	Size D4 Hardwood frame (surface mount) ext 414x282x52	60.00

STOCK CODE	DESCRIPTION	LIST PRICE
3505/50	Size A Stainless Steel hood (surface fit) 254x140x65	36.60
3506/50	Size D Stainless steel hood (surface fit) 325x185x65	54.00
3507/50	Size D1 Stainless steel hood (surface fit) 353x185x65	100.00
3508/50	Size D2 Stainless steel hood (surface fit) 381x185x65	104.00
3509/50	Size D3 Stainless steel hood (surface fit) 409x185x65	108.00
3510/50	Size D4 Stainless steel hood (surface fit) 409x281x65	100.00

STOCK CODE	DESCRIPTION	LIST PRICE
3505/00	Size A Stainless steel hood (flush fit) 122x140	22.50
3506/00	Size D Stainless steel hood (flush fit) 122x185	25.50
3510/00	Size D Stainless steel hood (flush fit) 409x283	156.00

# vandal resistant audio panels

## vandal resistant name window panels(page 11)



STOCK CODE	DESCRIPTION	LIST PRICE
4201	01 button VR S Steel panel name windows size A	115.00
4202	02 button VR S Steel panel name windows size A	125.00
4203	03 button VR S Steel panel name windows size A	135.00
4204	04 button VR S Steel panel name windows size A	145.00
4205	05 button VR S Steel panel name windows size A	155.00
4406	06 button VR S Steel panel, name windows size D	180.00
4407	07 button VR S Steel panel, name windows size D	190.00
4408	08 button VR S Steel panel, name windows size D	200.00
4409	09 button VR S Steel panel, name windows size D	210.00
4410	10 button VR S Steel panel, name windows size D	220.00
4411	11 button VR S Steel panel, name windows size D	230.00
4412	12 button VR S Steel panel, name windows size D	240.00
4413	13 button VR S Steel panel, name windows size D	250.00
4414	14 button VR S Steel panel, name windows size D	260.00
4415	15 button VR S Steel panel, name windows size D1	270.00
4416	16 button VR S Steel panel, name windows size D1	280.00
4417	17 button VR S Steel panel, name windows size D2	290.00
4418	18 button VR S Steel panel, name windows size D2	300.00
4419	19 button VR S Steel panel, name windows size D3	310.00
4420	20 button VR S Steel panel, name windows size D3	320.00

All panels listed can be supplied in polished brass, add £30.  
In order to correctly specify the brass panel you require simply change the first digit of the code number from 4 to 6. ie 4201 (stainless steel) becomes 6201 (brass).

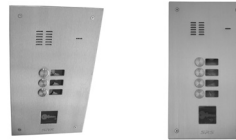
## vandal resistant name window panels (page 11) with 40 code tenant keypad



STOCK CODE	DESCRIPTION	LIST PRICE
4201/04	01 button VR S Steel panel, name window, keypad size A	245.00
4402/04	02 button VR S Steel panel, name windows, keypad size D	270.00
4403/04	03 button VR S Steel panel, name windows, keypad size D	280.00
4404/04	04 button VR S Steel panel, name windows, keypad size D	290.00
4405/04	05 button VR S Steel panel, name windows, keypad size D	300.00
4406/04	06 button VR S Steel panel, name windows, keypad size D	310.00
4407/04	07 button VR S Steel panel, name windows, keypad size D	320.00
4408/04	08 button VR S Steel panel, name windows, keypad size D1	330.00
4409/04	09 button VR S Steel panel, name windows, keypad size D2	340.00
4410/04	10 button VR S Steel panel, name windows, keypad size D2	350.00
4411/04	11 button VR S Steel panel, name windows, keypad size D3	360.00
4412/04	12 button VR S Steel panel, name windows, keypad size D3	370.00
4413/04	13 button VR S Steel panel, name windows, keypad size D4	380.00
4414/04	14 button VR S Steel panel, name windows, keypad size D4	390.00
4415/04	15 button VR S Steel panel, name windows, keypad size D4	400.00
4416/04	16 button VR S Steel panel, name windows, keypad size D4	410.00
4417/04	17 button VR S Steel panel, name windows, keypad size D4	420.00
4418/04	18 button VR S Steel panel, name windows, keypad size D4	430.00
4419/04	19 button VR S Steel panel, name windows, keypad size D4	440.00
4420/04	20 button VR S Steel panel, name windows, keypad size D4	450.00

All panels listed can be supplied in polished brass, add £30.  
In order to correctly specify the brass panel you require simply change the first digit of the code number from 4 to 6. ie 4201/04 (stainless steel) becomes 6201/04 (brass).

## vandal resistant name window panels(page 11) with 40mm square proximity reader cut out



STOCK CODE	DESCRIPTION	LIST PRICE
4201/08	01 button VR S Steel panel, name windows, prox. size A	145.00
4402/08	02 button VR S Steel panel, name windows, prox. size D	170.00
4403/08	03 button VR S Steel panel, name windows, prox. size D	180.00
4404/08	04 button VR S Steel panel, name windows, prox. size D	190.00
4405/08	05 button VR S Steel panel, name windows, prox. size D	200.00
4406/08	06 button VR S Steel panel, name windows, prox. size D	210.00
4407/08	07 button VR S Steel panel, name windows, prox. size D	220.00
4408/08	08 button VR S Steel panel, name windows, prox. size D	230.00
4409/08	09 button VR S Steel panel, name windows, prox. size D	240.00
4410/08	10 button VR S Steel panel, name windows, prox. size D	250.00
4411/08	11 button VR S Steel panel, name windows, prox. size D1	260.00
4412/08	12 button VR S Steel panel, name windows, prox. size D1	270.00
4413/08	13 button VR S Steel panel, name windows, prox. size D2	280.00
4414/08	14 button VR S Steel panel, name windows, prox. size D2	290.00
4415/08	15 button VR S Steel panel, name windows, prox. size D3	300.00
4416/08	16 button VR S Steel panel, name windows, prox. size D3	310.00
4417/08	17 button VR S Steel panel, name windows, prox. size D4	320.00
4418/08	18 button VR S Steel panel, name windows, prox. size D4	330.00
4419/08	19 button VR S Steel panel, name windows, prox. size D4	340.00
4420/08	20 button VR S Steel panel, name windows, prox. size D4	350.00

All panels listed can be supplied in polished brass, add £30.  
In order to correctly specify the brass panel you require simply change the first digit of the code number from 4 to 6. ie 4201/08 (stainless steel) becomes 6201/08 (brass).

## name plates for name window panels (page 11)



STOCK CODE	DESCRIPTION	LIST PRICE
NPS01	Stainless steel name plate engraved 1	7.20
NPS02	Stainless steel name plate engraved 2	7.20
NPS03	Stainless steel name plate engraved 3	7.20
NPS04	Stainless steel name plate engraved 4	7.20
NPS05	Stainless steel name plate engraved 5	7.20
NPS06	Stainless steel name plate engraved 6	7.20
NPS07	Stainless steel name plate engraved 7	7.20
NPS08	Stainless steel name plate engraved 8	7.20
NPS09	Stainless steel name plate engraved 9	7.20
NPS10	Stainless steel name plate engraved 10	7.20
NPS11	Stainless steel name plate engraved 11	7.20
NPS12	Stainless steel name plate engraved 12	7.20
NPS13	Stainless steel name plate engraved 13	7.20
NPS14	Stainless steel name plate engraved 14	7.20
NPS15	Stainless steel name plate engraved 15	7.20
NPS16	Stainless steel name plate engraved 16	7.20
NPS17	Stainless steel name plate engraved 17	7.20
NPS18	Stainless steel name plate engraved 18	7.20
NPS19	Stainless steel name plate engraved 19	7.20
NPS20	Stainless steel name plate engraved 20	7.20
NP	Stainless steel name plate blank	7.20
NPCLEAR	Clear polycarbonate name window	7.20
NPRECEP	Stainless steel name plate engraved RECEPTION	7.20
NPSSERV	Stainless steel name plate stamped SERVICE	7.20
NPSTRADE	Stainless steel name plate stamped TRADE	7.20



# vandal resistant modular audio panels

## post for vandal resistant panels (page 12)

STOCK CODE	DESCRIPTION	LIST PRICE
SPECPST	Special Post - to custom design - see order notes	500.00

## vandal resistant button modules (page 12)



STOCK CODE	DESCRIPTION	LIST PRICE
50100/1	MVRP 1 button module	30.00
50100/2	MVRP 2 button module	45.00
50100/3	MVRP 3 button module	60.00
50100/4	MVRP 4 button module	75.00
50100/5	MVRP 5 button module	90.00
50100D02	MVRP 2 button module on 2 columns	54.00
50100D04	MVRP 4 button module on 2 columns	78.00
50100D06	MVRP 6 button module on 2 columns	102.00
50100D08	MVRP 8 button module on 2 columns	126.00
50100D10	MVRP 10 button module on 2 columns	150.00

## vandal resistant audio modules (page 12)



STOCK CODE	DESCRIPTION	LIST PRICE
50110	MVRP SRS audio module	60.00
50110/1	MVRP SRS audio module, 1 button	75.00
50110/2	MVRP SRS audio module, 2 button	90.00

## vandal resistant misc. modules (page 12)



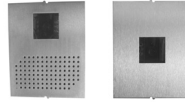
STOCK CODE	DESCRIPTION	LIST PRICE
50100	MVRP blank module	21.00
50110P1	MVRP Panasonic module, 1 button (excl. Panasonic part)	69.00
501210	MVRP SRS 40 code keypad module	89.00
501220	MVRP SRS proximity reader module (blank 40mm sq)	51.00

## vandal resistant DDA modules (page 12)



STOCK CODE	DESCRIPTION	LIST PRICE
50111	MVRP DDA with DOOR OPEN & PLEASE SPEAK LEDs	96.00
50111-1	MVRP DDA with DOOR OPEN & PLEASE SPEAK LEDs 1 button	109.00
50111-D1	MVRP DDA with 1 LARGE button - add NPBRAILLE	90.00
50111-D2	MVRP DDA with 2 LARGE button - add NPBRAILLE	150.00
50111-D3	MVRP DDA with 3 LARGE button - add NPBRAILLE	210.00
50111-D4	MVRP DDA with 4 LARGE button - add NPBRAILLE	270.00

## co-ax video modules



STOCK CODE	DESCRIPTION	LIST PRICE
501200	MVRP SRS audio / video module (includes speaker / camera)	150.00
501201	MVRP SRS video module (includes camera)	123.00

These items are not listed in the catalogue

## flush module holders (page 13)



STOCK CODE	DESCRIPTION	LIST PRICE
501851	MVRP 1 module flush frame 1 high, 1 wide	96.00
501852	MVRP 2 module flush frame 2 high, 1 wide	108.00
501853	MVRP 3 module flush frame 3 high, 1 wide	123.00
501854	MVRP 4 module flush frame 2 high, 2 wide	168.00
501856	MVRP 6 module flush frame 3 high, 2 wide	210.00
501859	MVRP 9 module flush frame 3 high, 3 wide	270.00

## surface module holders (page 13)



STOCK CODE	DESCRIPTION	LIST PRICE
501881	MVRP 1 module surface frame 1 high, 1 wide	89.00
501882	MVRP 2 module surface frame 2 high, 1 wide	109.00
501883	MVRP 3 module surface frame 3 high, 1 wide	129.00
501884	VRP 4 module surface frame 2 high, 2 wide	195.00
501886	VRP 6 module surface frame 3 high, 2 wide	225.00
501889	VRP 9 module surface frame 3 high, 3 wide	300.00

## SD mono video kits

(page 14)



STOCK CODE	DESCRIPTION	LIST PRICE
SDK-D1001	SRS 1 way VIDEO kit, surface D1001 panel, R12S monitor	165.83
SDK-D1001L	SRS 1 way VIDEO kit, surface panel, monitor & release	195.83
SDK-D1001R	SRS 1 way VIDEO kit, surface D1001 panel, R12R monitor	216.50
SDK-D2S	SRS 1 way VIDEO kit - surface panel (stainless steel)	283.17
SDK-D2S04	SRS 1 way mono video kit - surface SS panel + keypad	381.67

## SD mono video kit accessories

(page 14)

STOCK CODE	DESCRIPTION	LIST PRICE
3012	SRS 3000 series 4inch CRT monitor	115.00
3012BR	SRS 3012 bracket	45.00
SD880R12R	SRS 4inch CRT monitor with image recorder	153.79
SD880R12S	SRS 4inch CRT monitor	115.00
SD880D1001	SD mono panel surface mount die cast - silver	85.93
SD8D304S	SD mono panel surface mount stainless + keypad	325.74
SD8D3S	SD mono panel surface mount stainless steel	216.30
SDK-DEMO1	DEMO BOARD VIDEO kit, surface D1001 panel, R12S monitor	165.83
SDK-DEMO3	DEMO BOARD VIDEO kit, surface D1001 panel, R12R monitor	216.50

## SD colour video kits

(page 15)



STOCK CODE	DESCRIPTION	LIST PRICE
SDK-C1001L	SRS 1 way colour VIDEO kit - panel, col mon & release	411.67
SDK-DC1001	SRS 1 way colour VIDEO kit - DC1001 panel, RC16 mon.	381.67
SDK-DC1002	SRS 1 way colour VIDEO kit - DC1001 panel, RC36 mon.	398.33
SDK-DC3S	SRS 1 way colour VIDEO kit - surface panel (stainless)	481.67
SDK-DC3S04	SRS 1 way colour video kit - surface SS panel + keypad	598.33

## SD colour video kit accessories

(page 15)

STOCK CODE	DESCRIPTION	LIST PRICE
3016BR	SRS 3016 bracket	60.00
3036	SRS 3000 series hands free colour monitor	315.00
3016	SRS 3000 series 4inch TFT colour monitor	298.33
SD880RC16	SRS 4inch TFT colour monitor	298.33
SD880RC36	SRS 4inch super thin 'flat screen' colour monitor	315.00
SD880C1001	SD colour panel surface mount die cast - silver	125.74
SD8DC304S	SD colour panel surface mount stainless + keypad	366.48
SD8DC3S	SD colour panel surface mount stainless steel	236.85
SDK-DEMO2	DEMO BOARD VIDEO kit, surface DC1001 panel, R16S monitor	381.67

## VR SD mono co-ax video panels

STOCK CODE	DESCRIPTION	LIST PRICE
3701	01 button 3000 series S Steel video panel, size A	228.00
3702	02 button 3000 series S Steel video panel, size A	246.00
3803	03 button 3000 series S Steel video panel, size D	264.00
3804	04 button 3000 series S Steel video panel, size D	282.00
3805	05 button 3000 series S Steel video panel, size D	300.00
3700C	Colour camera module for SRS 3000 series panels	90.00
3700M	Mono camera module for SRS 3000 series panels	60.00

## SRS co-ax mono video kits

(page 16)



STOCK CODE	DESCRIPTION	LIST PRICE
K4501	01 monitor kit - stainless steel panel & Universal monitor	584.29

## VR mono co-ax video panels

(page 16)



STOCK CODE	DESCRIPTION	LIST PRICE
4501	01 button S Steel video panel size A	235.00
4502	02 button S Steel video panel size A	245.00
4503	03 button S Steel video panel size A	255.00
4504	04 button S Steel video panel size A	265.00
4605	05 button S Steel video panel size D	275.00
4606	06 button S Steel video panel size D	285.00
4607	07 button S Steel video panel size D	295.00
4608	08 button S Steel video panel size D	305.00
4609	09 button S Steel video panel size D	315.00
4610	10 button S Steel video panel size D	325.00

All panels listed can be supplied in polished brass, add £30.

In order to correctly specify the brass panel you require simply change the first digit of the code number from 4 to 6. ie 4801 (stainless steel) becomes 6801 (brass).

## VR mono co-ax video panels

(page 16)

engravable with 40 code tenant keypad



STOCK CODE	DESCRIPTION	LIST PRICE
4601/04	01 button S Steel video panel, keypad size D	365.00
4602/04	02 button S Steel video panel, keypad size D	375.00
4603/04	03 button S Steel video panel, keypad size D	385.00
4604/04	04 button S Steel video panel, keypad size D	395.00
4605/04	05 button S Steel video panel, keypad size D	405.00
4606/04	06 button S Steel video panel, keypad size D	415.00
4607/04	07 button S Steel video panel, keypad size D	425.00
4608/04	08 button S Steel video panel, keypad size D	435.00
4609/04	09 button S Steel video panel, keypad size D	445.00
4610/04	10 button S Steel video panel, keypad size D	455.00

# video kits - psu - monitors - video panels

## VR mono co-ax video panels (page 16) with 40mm proximity reader cut out



STOCK CODE	DESCRIPTION	LIST PRICE
4601/08	01 button S Steel video panel, PAC size D	265.00
4602/08	02 button S Steel video panel, PAC size D	275.00
4603/08	03 button S Steel video panel, PAC size D	285.00
4604/08	04 button S Steel video panel, PAC size D	295.00
4605/08	05 button S Steel video panel, PAC size D	305.00
4606/08	06 button S Steel video panel, PAC size D	315.00
4607/08	07 button S Steel video panel, PAC size D	325.00
4608/08	08 button S Steel video panel, PAC size D	335.00
4609/08	09 button S Steel video panel, PAC size D	345.00
4610/08	10 button S Steel video panel, PAC size D	355.00

All panels listed can be supplied in polished brass, add £30.  
In order to correctly specify the brass panel you require simply change the first digit of the code number from 4 to 6. ie 4801/08 (stainless steel) becomes 6801/08 (brass).

## hoods and frames for VR panels (page 16)



See price list page 4  
See catalogue page 11 for information

## co-ax mono video monitor (page 16)



STOCK CODE	DESCRIPTION	LIST PRICE
AN7270S	SRS70 Flat screen video monitor - inc. bracket	210.00
AN7320	Wall phone, 3 button, Series 70 white	22.50

## co-ax video power supply (page 16)



STOCK CODE	DESCRIPTION	LIST PRICE
9008V2	SRS Boxed video power supply timed 18v dc 130x100x68	88.50
AN0606	SD 60 video distributor for video systems / co-axial cable	19.48
AN5498S	SRS PSU for simultaneous calling monitors - requires AN0606	83.25
9432	SRS Boxed expandable 2 entrance relay 130x100x68	128.00
RG59	Co-axial 75Ω cable black 100m	30.50

## SRS co-ax mono video kits (page 17)



STOCK CODE	DESCRIPTION	LIST PRICE
K4701	01 monitor kit - stainless steel panel & Universal monitor	591.13
K4702	02 monitor kit - stainless steel panel & Universal monitor	840.24
K4803	03 monitor kit - stainless steel panel & Universal monitor	1070.84
K4804	04 monitor kit - stainless steel panel & Universal monitor	1301.44
K4805	05 monitor kit - stainless steel panel & Universal monitor	1532.05
K4801/04	01 monitor kit - s/steel panel, keypad & Universal monitor	694.68
K4802/04	02 monitor kit - s/steel panel, keypad & Universal monitor	918.44

## VR mono co-ax video panels (page 17) name window style



STOCK CODE	DESCRIPTION	LIST PRICE
4701	01 button S Steel video panel, name windows size A	235.00
4702	02 button S Steel video panel, name windows size A	245.00
4803	03 way VR video S Steel panel, name windows size D	255.00
4804	04 way VR video S Steel panel, name windows size D	265.00
4805	05 way VR video S Steel panel, name windows size D	275.00
4806	06 way VR video S Steel panel, name windows size D	285.00
4807	07 way VR video S Steel panel, name windows size D	295.00
4808	08 way VR video S Steel panel, name windows size D	305.00
4809	09 way VR video S Steel panel, name windows size D	315.00
4810	10 way VR video S Steel panel, name windows size D	325.00
4811	11 way VR video S Steel panel, name windows size D	335.00
4812	12 way VR video S Steel panel, name windows size D	345.00
4813	13 way VR video S Steel panel, name windows size D	355.00
4814	14 way VR video S Steel panel, name windows size D	365.00
4815	15 way VR video S Steel panel, name windows size D1	375.00
4816	16 way VR video S Steel panel, name windows size D1	385.00
4817	17 way VR video S Steel panel, name windows size D2	395.00
4818	18 way VR video S Steel panel, name windows size D2	405.00
4819	19 way VR video S Steel panel, name windows size D3	415.00
4820	20 way VR video S Steel panel, name windows size D3	425.00

## VR mono co-ax video panels (page 17) name window style with 40 code keypad



STOCK CODE	DESCRIPTION	LIST PRICE
4801/04	01 way VR video S Steel panel, name wind, keypad size D	365.00
4802/04	02 way VR video S Steel panel, name wind, keypad size D	375.00
4803/04	03 way VR video S Steel panel, name wind, keypad size D	385.00
4804/04	04 way VR video S Steel panel, name wind, keypad size D	395.00
4805/04	05 way VR video S Steel panel, name wind, keypad size D	405.00
4806/04	06 way VR video S Steel panel, name wind, keypad size D	415.00
4807/04	07 way VR video S Steel panel, name wind, keypad size D1	425.00
4808/04	08 way VR video S Steel panel, name wind, keypad size D1	435.00
4809/04	09 way VR video S Steel panel, name wind, keypad size D2	445.00
4810/04	10 way VR video S Steel panel, name wind, keypad size D2	455.00



# video panels - monitors - power supplies

## VR mono co-ax video panels (page 17) name window style with proximity cut out



STOCK CODE	DESCRIPTION	LIST PRICE
4801/08	01 way VR video S Steel panel, name windows, prox size D	265.00
4802/08	02 way VR video S Steel panel, name windows, prox size D	275.00
4803/08	03 way VR video S Steel panel, name windows, prox size D	285.00
4804/08	04 way VR video S Steel panel, name windows, prox size D	295.00
4805/08	05 way VR video S Steel panel, name windows, prox size D	305.00
4806/08	06 way VR video S Steel panel, name windows, prox size D	315.00
4807/08	07 way VR video S Steel panel, name windows, prox size D	325.00
4808/08	08 way VR video S Steel panel, name windows, prox size D	335.00
4809/08	09 way VR video S Steel panel, name windows, prox size D	345.00
4810/08	10 way VR video S Steel panel, name windows, prox size D	355.00

## name plates for name window panels (page 17)



See price list page 5  
See catalogue page 11 for information

## hoods and frames for VR panels (page 17)



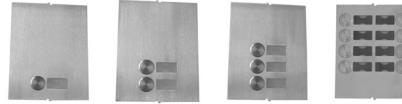
See price list page 4  
See catalogue page 11 for information

## 5 wire video panel module (page 18)



STOCK CODE	DESCRIPTION	LIST PRICE
50621	MVRP Bitron 3000 video module plate 0 button	54.00
50621-1	MVRP Bitron 3000 video module plate 1 button	63.00
AV60/00/IX	Bitron GAVM3000/00 0 button compact audio/video module	407.72
AV78/00/IX	Bitron GAVM3000/00 0 button compact colour module	566.76

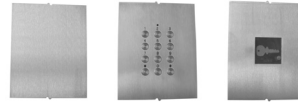
## vandal resistant button modules (page 18)



See price list page 6

STOCK CODE	DESCRIPTION	LIST PRICE
AN6298	4 way diode plate is require 1 per 4 call buttons	4.65

## vandal resistant misc. modules (page 18)



See price list page 6

## flush module holders (page 18)



See price list page 6

## surface module holders (page 18)



See price list page 6

## 5 wire video monitor (page 19)



STOCK CODE	DESCRIPTION	LIST PRICE
AV5002	MV1000 B+W 4 extraflat video telephone white	162.27
AV5010	MVC1000 Colour 4 extraflat video telephone white	265.32

## 5 wire control equipment (page 19)



STOCK CODE	DESCRIPTION	LIST PRICE
AK7513	SD 55 Bitron video distributor 4 way	14.55
AN5498	AS 60 Additional psu for simultaneous, calling 2 monitor	78.12
AV7326	A 70 Bitron video power supply	147.04
AN7775	DE 80 2 entrance relay (video)	122.49

# keypads - access control

## keypads (page 20)



STOCK CODE	DESCRIPTION	LIST PRICE
DC30SB	Programmable 40 code Polished Brass surface keypad c/w light	160.00
DC30SS	Programmable 40 code Stainless steel keypad c/w light	121.00
DC40SB	Doorcode programmable 30 code Polished Brass surface keypad	148.33
DC50SS	Programmable 100 code Stainless steel illuminated keypad	126.00
DC40SSP	40 code polished stainless steel surface keypad	124.83

## access control - stand alone kits (page 21)

STOCK CODE	DESCRIPTION	LIST PRICE
KDC250M	DC250 kit Mag-stripe Reader, DC250, PSU & 10 cards	281.87
KDC250MM	DC250 kit Mag. stripe Reader, DC250, PSU, magnet & 10 cards	361.32
KDC250MR	DC250 kit Mag. stripe Reader, DC250, PSU, Release & 10 cards	305.16
KDC250P	DC250 kit Proximity Reader, DC250, PSU & 10 cards	294.12
KDC250PM	DC250 kit Proximity Reader, DC250, PSU, Magnet & 10 cards	373.58
KDC250PR	DC250 kit Proximity Reader, DC250, PSU, Release & 10 cards	317.41
KDC250PT	DC250 kit Proximity Reader, DC250, PSU & 10 tags	323.76

## control & power supply (page 21)



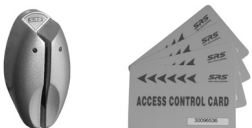
STOCK CODE	DESCRIPTION	LIST PRICE
DC250	DoorcarD stand alone card reader controller - 250 user	115.00

## proximity readers and cards (page 21 & 23)



STOCK CODE	DESCRIPTION	LIST PRICE
6008BGP	HID ProxPoint Plus Clock & Data - D. grey 400mm wire	125.00
105047	MOR VandalProx reader 40mm clock & data 300mm wire	285.00
1326	HID ProxcardII proximity card - Clock & Data	3.09
1346	HID ProxkeyII proximity tag - Clock & Data	6.21
1386	HID ISOProx card - Clock & Data	6.21

## mag-stripe readers and cards (page 21 & 23)



STOCK CODE	DESCRIPTION	LIST PRICE
40010042	MR4 External magnetic card reader - silver finish V2	125.00
22401	SRS Coded magnetic card	1.80
22400	Plain white magnetic card suitable for image print - encoded	1.80

## Smart.net access control kits (page 22)



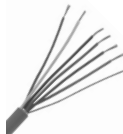
STOCK CODE	DESCRIPTION	LIST PRICE
40011001	SRS Smart.net starter kit (software & RS232/485 convertor)	411.00
40011101	SRS Smart.net Door Kit MAGSTRIPE	447.50
40011102	SRS Smart.net Door Kit PROXIMITY	447.50

## network cable & accessories (page 22)



STOCK CODE	DESCRIPTION	LIST PRICE
BEL8723	BEL8723 equiv. Smart network cable 2TP+Screen 100m reel	55.50
BAT1202	Yuasa 12 volt 2.1 Ah rechargeable battery	14.52
TZ	A Transil for electric lock suppression	1.60

## reader cable (page 21 & 23)



STOCK CODE	DESCRIPTION	LIST PRICE
BEL9536	BEL9536 equiv. 6 core screened 100m reel	48.75

## card accessories



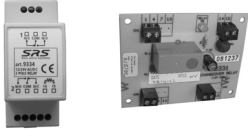
These items are not shown in the catalogue

STOCK CODE	DESCRIPTION	LIST PRICE
22430	150 micron Stick on laminating pouches for proximity cards	0.69
512120	30 steel bead neck chain	0.58
512121	Swivel strap clip	0.32
512130	Hard landscape plastic card holder	SemiClear 0.30
512132	Rigid landscape plastic card holder	Clear 2.40
512133	Clip on Yoyo	Black 1.38

# timers - relays - psu -

## relays

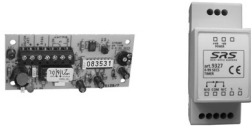
(page 24)



STOCK CODE	DESCRIPTION	LIST PRICE
9331M	SRS 2 pole relay 12v ac/dc, 5A	20.00
9334	DIN mount 2 pole relay 12v ac/dc, 2A	28.89

## timed relays

(page 24)



STOCK CODE	DESCRIPTION	LIST PRICE
9327	SRS DIN mount 60 sec timer +ve or -ve trigger	28.89

## time clocks

(page 24)



STOCK CODE	DESCRIPTION	LIST PRICE
5200	SRS Digital time clock 16 time patterns 130x100x60	53.33
5200M	SRS Digital time clock MODULE - relay output	43.33
5210M	SRS BST/GMT time clock MODULE - relay output	90.00

## power supplies

(page 24)



STOCK CODE	DESCRIPTION	LIST PRICE
9001	SRS Boxed PSU, 12v dc 0.8A 130x100x68	48.33
9300	SRS Power supply 0,12,24 V AC (60VA) DIN	26.65
9012	SRS Boxed PSU, charger 12v dc 1.0A 250x234x84	30.45
9022	SRS Boxed PSU, charger 12v dc 2.0A 250x234x84	38.70
9042	SRS Boxed PSU, charger 12v dc 4.0A 250x234x84	90.00
PSU12-12TB	SRS mini 12V DC, 1 Ampere power supply 57 x 47 x 38mm	24.00
BAT1207	12 volt 7 Ah rechargeable battery	18.45

# exit devices - fire switches

## egress buttons (page 25)

### plastic



STOCK CODE	DESCRIPTION	LIST PRICE
80916S	SRS Egress button Plastic surface C/O, 87x87	14.00
80926S	SRS Egress button Plastic surface C/O, arch	16.50

### stainless steel



STOCK CODE	DESCRIPTION	LIST PRICE
80927	SRS stainless button egress flush N/O, 100x35	23.58
80851SS	stainless steel surface mount box 47 mm (1 gang) with hood	25.28
80917	SRS stainless button egress flush N/O, 87x87	16.67
80917S	SRS stainless button egress surface N/O, 90x90	43.33
80852SS	Surface mount shroud (1 gang) (HAC-0102)	8.85
80912	SRS stainless button 'blank' flush N/O, 90x90	23.33
80912S	SRS stainless button 'blank' surface N/O, 90x90	50.00

### stainless steel with green dome



STOCK CODE	DESCRIPTION	LIST PRICE
DRB0004PTE	SRS s. steel GREEN DOME egress button flush	35.25

### polished brass



STOCK CODE	DESCRIPTION	LIST PRICE
80918	SRS brass button egress flush C/O, 87x87	32.22

### stainless steel LARGE



STOCK CODE	DESCRIPTION	LIST PRICE
809651	SRS 4 round DISABLED 'Push to Open' button	70.87
809651F	SRS 4 & 6 flush mount box	23.60
809651S	SRS 4 surface mount box	19.95
809652	SRS 6 round DISABLED 'Push to Open' button	82.53
809652S	SRS 6 surface mount box	24.56
809653	SRS Narrow DISABLED 'Push to Open' button	52.04
809653S	SRS 6 surface mount box	22.05

## stainless steel key switches (page 25)



STOCK CODE	DESCRIPTION	LIST PRICE
88200S	SRS Key switch s steel, keyed differ, surface	41.00
88201S	SRS Key switch s steel, key alike surface C/O 90x90	41.00

## emergency over-ride fire switch (page 25)



STOCK CODE	DESCRIPTION	LIST PRICE
FS2-FS	Fire brigade housing with switch and CRESCENT key Flush	91.20
FS2-KEY	CRESCENT key for FS2	20.00
FS2-SS	Fire brigade housing with switch and CRESCENT key Surface	125.60

## break glass units (page 25)



STOCK CODE	DESCRIPTION	LIST PRICE
114405	Gianni Break Glass - Re-settable 2 pole GREEN	17.16
114406	Gianni Break Glass unit 2 pole GREEN	18.75

STOCK CODE	DESCRIPTION	LIST PRICE
114411	KAC Break Glass unit 1 pole GREEN	15.48
114413	KAC Break Glass - Re-settable 1 pole GREEN	20.49
1144191	KAC Breakable seal for 1144190 (pack of 5)	1.83
1144192	KAC Spare plastic for re-settable breakglass unit	1.64
1144193	KAC Clear hinged cover seal for ALL break glass units	4.65
114510	Spare Glass pack of 5	5.70
114512	M8 Test keys for new BGU pack of 10	8.52

# lock releases

## rim releases

(page 26)



STOCK CODE	DESCRIPTION	LIST PRICE
615110	N203 Standard rim release Grey 12v ac FL	14.03
615111	N203B Standard rim release Brass 12v ac FL	23.40
615112	N213 Standard rim release Grey 12v dc FL	19.80
615113	N20312E Rim release BUDGET 12v dc FO	28.70

## outward opening conversion

STOCK CODE	DESCRIPTION	LIST PRICE
615330	R203 Rim case for outward opening Grey	14.08
615331	R203 Rim case for outward opening Brass	15.66

## rim releases (surface type)

STOCK CODE	DESCRIPTION	LIST PRICE
615120	N201 Surface release Chrome 12v ac FL	25.93
615121	N202 Surface release Brass 12v ac FL	37.07

## rim releases (heavy duty)

(page 26)



STOCK CODE	DESCRIPTION	LIST PRICE
ER350	Gianni RIM strike S. Steel 250mA 12v dc	66.00

## rim releases (ingersol style)

(page 26)



STOCK CODE	DESCRIPTION	LIST PRICE
614410	ING/B Ingersol SC71 rim release Brass 12v ac FL	63.00
614411	ING/C Ingersol SC71 rim release chrome 12v ac FL	62.10
614420	ING/B12 Ingersol SC71 rim release Brass 12v dc FL	82.80
614421	ING/C12 Ingersol SC71 rim release chrome 12v dc FL	81.00
614430	ING/B512 Ingersol SC71 rim release Brass 12v dc FO	89.10
614431	ING/B512 Ingersol SC71 rim release Chrome 12v dc FO	88.20

## latch mortise releases

(page 26)



STOCK CODE	DESCRIPTION	LIST PRICE
2332	Union 2.5 backset mortice latch S/C cylinder, thumbturn	86.36
615210	N Latch mortise release Grey 12v ac FL	13.87
615211	NB Latch mortise release Brass 12v ac FL	24.00
615220	N12 Latch mortise release Grey 12v dc FL	19.07
615221	N12/305 Latch mortise release Grey 12v dc FLm	54.00
615230	N512 Latch mortise release Grey 12v dc FO	46.63
615231	N512/305 Latch mortise release Grey 12v dc FOm	63.90
615232	N512E Latch mortise release BUDGET 12v dc FO	26.93
615240	N24 Latch mortise release Grey 24v dc FL	24.30
615241	N524 Latch mortise release Grey 24v dc FO	56.50
615260	A Automatic mortise release Grey 12v ac FL	18.00

## mortise releases (heavy duty)

(page 26)



STOCK CODE	DESCRIPTION	LIST PRICE
ER310L	Gianni Long strike S. Steel 180mA 12v dc CO	63.00
ER310L-24	Gianni Long strike S. Steel 150 mA 24v dc CO	105.00
ER310LM	Gianni Long strike S. Steel mon. 180mA 12v dc CO	75.00
ER310RK	Gianni 13mm rebate kit	27.00

## mortise releases (sash lock type)

(page 26)



STOCK CODE	DESCRIPTION	LIST PRICE
615250	NGL LH Sash mortise release Grey 12v ac FL	27.00
615251	NGR RH Sash mortise release Grey 12v ac FL	27.00

## mortise releases (deadlock)

(page 26)

Not shown in the catalogue



STOCK CODE	DESCRIPTION	LIST PRICE
PGS701A	12v dc release for mort. deadlock - fail locked	105.00
PGS702A	12v dc release for mort. deadlock - fail unlocked	105.00
PGS702A24	24v dc release for mort. deadlock - fail unlocked	111.00



# electric locks - magnetic locks

## electric rim & gate locks



Not shown in the catalogue

STOCK CODE	DESCRIPTION	LIST PRICE
11610601	Cisa 5601 RH electric rim lock, button 1.25A 12v ac FL	106.34
11610602	Cisa 5602 LH electric rim lock, button 1.25A 12v ac FL	106.34
11610603	Cisa 5603 RH open out electric rim lock, button 12v ac FL	114.00
11610604	Cisa 5604 LH open out electric rim lock, button 12v ac FL	114.00
11823801	Cisa 80mm RH vertical electric gate lock, keyed 12v ac FL	114.00
11823802	Cisa 80mm LH vertical electric gate lock, keyed 12v ac FL	114.00
11921601	Cisa 60mm RH electric rim lock, keyed 1.25A 12v ac FL	114.00
11921602	Cisa 60mm LH electric rim lock, keyed 1.25A 12v ac FL	114.00
11921603	Cisa 60mm RH open out electric rim lock, keyed 12v ac FL	114.00
11921604	Cisa 60mm LH open out electric rim lock, keyed 12v ac FL	114.00
11931601	Cisa 60mm RH electric gate lock, button exit 12v ac FL	114.00
11931602	Cisa 60mm LH electric gate lock, button exit 12v ac FL	114.00
11931603	Cisa 60mm RH outward rim lock metal doors, cyl/but 12v ac FL	114.00
11931604	Cisa electric rim lock, 12v ac 1.25A int p/b - KBS RH Out	114.00

## electric locking for all doors

(page 27)

### replacement latch locks



STOCK CODE	DESCRIPTION	LIST PRICE
ML4001001	Trimec RH Deadlatch - 31/32 backset - dual faceplate	38.81
ML4001003	Trimec LH Deadlatch - 31/32 backset - dual faceplate	29.29
ML4002001	Trimec RH Deadlatch - 1 1/8 backset - dual faceplate	29.29
ML4002003	Trimec LH Deadlatch - 1 1/8 backset - dual faceplate	29.29

### handles for locks



STOCK CODE	DESCRIPTION	LIST PRICE
PH4500001	Trimec Paddle handle - PULL Right Hand	38.81
PH4500002	Trimec Paddle handle - PUSH Left Hand	38.81
PH4500003	Trimec Paddle handle - PULL Left Hand	38.81
PH4500004	Trimec Paddle handle - PUSH Right Hand	38.81

### thumb turn & cylinder



STOCK CODE	DESCRIPTION	LIST PRICE
4036	Cylinder for aluminium door lock round 1 key	38.00
4067	Thumb turn for aluminium door lock round	19.00

## electric strikes

(page 27)

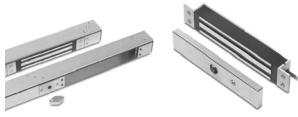


STOCK CODE	DESCRIPTION	LIST PRICE
ER310S	Gianni ANSI strike S. Steel 180mA 12v dc CO	63.00
ER310S-24	Gianni short strike S. Steel 150 mA 24v dc CO	105.00
ER310SM	Gianni ANSI strike S. Steel mon. 180mA 12v dc CO	75.00
ERLP025	25mm extension lip for ER310	16.80
ERLP050	50mm extension lip for ER310	16.80

# external magnetic lock - shear locks

## magnetic locks (page 27)

### flush mini magnets & housings



STOCK CODE	DESCRIPTION	LIST PRICE
EM10000	Mortice magnet 12/24 V	53.99
EM10000R	Mortice magnet (monitored) 12/24 V	61.50
EMAH1-1	Housing 1 metre 1 cut out	72.00
EMAH2-1	Housing 2 metre 1 cut out	135.00
EMAH2-2H	Gianni Horizontal Housing 2 metre - 2 cut out	135.00
EMAH2-2V	Vertical housing for single door 2 metre, 2 cut out	135.00

### surface mini magnets & brackets



STOCK CODE	DESCRIPTION	LIST PRICE
EMUL275S	600 lb magnetic lock 251x48x25 12/24v	52.48
EMUL275SL	600 lb magnetic lock 251x48x25 1mon 12/24v	72.00
EM100M	L bracket for mini magnet opens out	14.40
EM100MC	Gianni L bracket with architectural cover	24.75
EM300MC	Gianni Z & L bracket with architectural cover	42.00
EMUL275-ZL	Z & L bracket for mini magnet	31.50

### surface standard magnets & brackets



STOCK CODE	DESCRIPTION	LIST PRICE
EMUL545S	1200lb magnetic lock 267x73x41 12/24v	79.50
EMUL545SL	1200lb magnetic lock 267x73x41 1mon 12/24v	94.50
EMUL545-L	L bracket for standard magnet	15.30
EMUL545-ZL	Z & L bracket for standard magnet opens in	33.00

## door handle magnet (page 27)



STOCK CODE	DESCRIPTION	LIST PRICE
PH300	330mm handle with built in magnetic lock	201.00
PH600	full height door handle with built in magnetic lock	345.00

## external magnets & brackets (page 27)



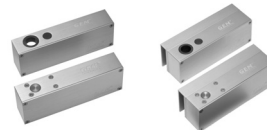
STOCK CODE	DESCRIPTION	LIST PRICE
EM10010EM	Gianni 1200lb magnetic lock 264x70x38 ext. 12/24v dc	126.00
EM100SEM	L bracket EXTERNAL for EM10010EM	27.75
EM500ZLW	Gianni Z & L bracket for external magnet	63.00

## shear lock & surface housing



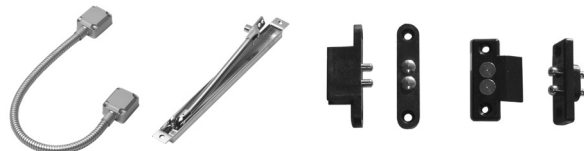
STOCK CODE	DESCRIPTION	LIST PRICE
GS705-30	Gianni shear magnetic lock 30mm	273.00
SM705-30H	shear magnetic lock surface housing only	75.00

## solenoid bolts (page 27)



STOCK CODE	DESCRIPTION	LIST PRICE
EB300	Gianni Solenoid Bolt (surface) 12v dc	180.60
EB300VGL	Gianni Solenoid Bolt for glass doors FO 12v dc	207.90
EB180	Gianni flush solenoid lock (as JL25) 12v dc FO	150.00
EB180H	Gianni Surface housing for JL25	67.50
EB200	Gianni flush solenoid lock (as EB1001) 12v dc FOm	115.50

## door loops & current transfer (page 24)



STOCK CODE	DESCRIPTION	LIST PRICE
DDC1	Contact for connecting power through hinge side of the door	8.10
DDC2	Contact for connecting power through lock side of the door	12.29
DL10312	Concealed door loop (SPDL04)	19.11
DL3509	Door loop 350mm with cable protection I/D 8mm O/D 14	12.75

**tel: 0208 621 6210**

**fax: 0208 621 6211**

**[sales@srsdooreentry.com](mailto:sales@srsdooreentry.com) [www.srsdooreentry.com](http://www.srsdooreentry.com)**

**842-850 Coronation Road, Park Royal, London, NW10 7QJ**