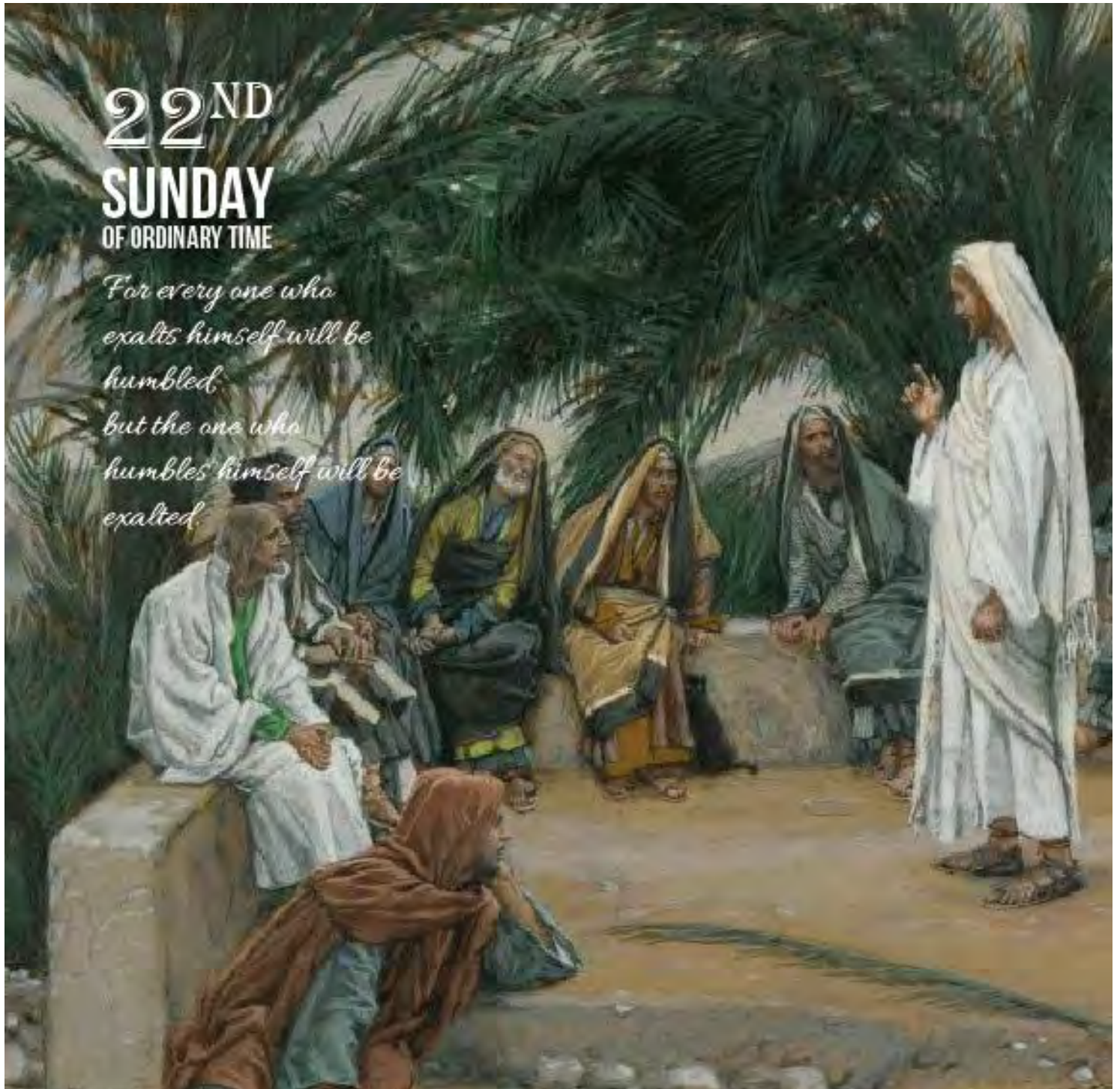




A COLLABORATIVE OF
ST. ELIZABETH AND
ST. MARY OF THE HILLS
MILTON, MASSACHUSETTS

SEPTEMBER 1, 2019



Calling all teens! High School Youth Group Is Returning!
Sunday, September 8 following the Noon Mass at St. Mary's
St. Mary's Lower Church (Find more info on page 4)
Come and bring a friend!!

THE VISITATION COLLABORATIVE

COLLABORATIVE WORSHIP SCHEDULE

Saturday Vigil: 4:00 PM at both churches
Confessions: 3:00-3:45 PM at both churches
Sunday Mass:
St. Mary: 10:15AM, 12:00 Noon
St. Elizabeth: 8:00 AM, 9:30 AM, 11:30 AM

Weekday Morning Mass: At 9:00 AM
At St. Elizabeth: Monday, Wednesday, Friday
At St. Mary: Tuesday, Thursday, Saturday

Rosary: before the 9:00 AM Mass (8:35)

Our Lady of Fatima Devotions: At St Mary's:
First Saturday before the 9:00 Mass

Eucharistic Adoration:
1st Saturday 9:30 – 11:00 AM at St. Mary's

Wednesday Evening Holy Hour
 Every Wednesday evening from 6-7 PM at St. Elizabeth Church. At 6:30 PM we pray the rosary and from 6-6:50 PM there is a priest available for the Sacrament of Reconciliation. Come for the entire hour or for a few minutes to spend time in the presence of Jesus.

All Day Eucharist Chapel on St. Elizabeth Campus
 Open for prayer in front of the Blessed Sacrament daily from 6:30AM – 8:30PM. You can access the chapel by the side door that faces St. Elizabeth Church.

SACRAMENTS

Baptisms

St. Mary of the Hills: last Sunday of the month at 1:00 pm. / **St. Elizabeth Parish:** 2nd or 3rd Sunday of the month at 12:30 pm.
 Baptismal Catechesis is required for first time parents. Call the office to schedule.

Marriage: Please call the office at least 6 months before the wedding date

Eucharist Ministry to the Sick: Please call the Parish Office to receive the Eucharist at home

R.C.I.A. : Rite of Christian Initiation of Adults please call the Parish Office

Welcome to Our Faith Community

We're happy that you're here. How may we help you?

- ◇ I would like to register in the parish
 Saint Mary of the Hills Parish _____
 Saint Elizabeth Parish _____
- ◇ I have a special prayer request
- ◇ Please note my change of address/email address
- ◇ Please add me to the parish email list
- ◇ I am interested in _____ ministry

Name: _____

Address: _____

Phone: _____

Email: _____

Comment:

Our Churches



St. Elizabeth Parish Church
 350 Reedsdale Road
 Milton, MA 02186
 Www.stelizabethmilton.org



St. Mary of the Hills
 Parish Church
 29 St. Mary's Road
 Milton, MA 02186
 Www.smhmilton.org

THE VISITATION COLLABORATIVE

FROM THE PASTOR

The Farmer's Almanac came out this week with their winter predictions. Forecast: colder-than-normal temperatures in the Northeast and above-normal precipitation expected, a good amount of snow, but also a wintry mix of rain, sleet — especially along the coast, roller coaster temperatures and the wettest and coldest part being in January.

Let's keep summer weather around longer!

I want to thank Frank Kelley for His coming to the parish this week. It was nice to have a good number of parishioners attend for an event we put together within a week. It is healthy for our collaborative that we do gather for prayer and study of our faith outside of the Mass. We all have been given faith in baptism and the more we expose this gift to the presence of the Holy Spirit, the stronger our collaborative will be. If there is a topic about our faith in which you are interested, I would be interested to know what it is. We are always trying to improve our children's faith formation here in the collaborative. We need to have more opportunities and participation in adult faith formation. If you are interested in adult faith formation evenings, I am interested to hear from you. Right now we are looking at Wednesday evenings for this.

It was good to see many of the kids in Milton traveling to school this past week. Our school begins classes this Tuesday. Please keep our teachers and students in your prayers, that they have a faith filled and formative year. Julie Marotta and the staff have done a lot of work this summer to prepare for the children's return. We are excited about the new Early Childhood Center classrooms and curriculum.

We will be starting our social gatherings after the 9:30 and 10:15am Masses. We are so grateful to the families who have helped with hits in the past. We are hoping that there will be more families this year who will step forward to help set up and organize these gatherings. As the saying goes: many hands make light work. Please contact the office if you are willing to help with these.

Here is a joke to help you enjoy your reentry into your post summer vacation schedule:

Man: What is a million years like to you?

God: Like one second.

Man: What is a million dollars like to you?

God: Like one penny.

Man: Can I have a penny?

God: Just a second.

Have a blessed week.

In Christ,
Fr. Bennett



How Does Our Garden Grow?

We are trying to plant a new perennial garden in a section part of the newly cleared space at the collaborative offices. We are in the prime time for planting perennials for next year. If you have any perennials/perennial clippings that you would be willing to donate to our project, we are interested. We are trying to plant these in the next several weeks. Please call the collaborative office or email Fr. Bennett (frbennett@visitationmilton.org).



***Flocknote: The new communication tool
for the
Visitation Collaborative in Milton***

We are a much more mobile society and our Visitation Collaborative is trying to do a better job with staying in touch with our parishioners. We understand that not everyone reads the entire bulletin every week. There are also some things that we communicate in the bulletin and at Mass that require timely reminders and follow-up. This tool will help us to communicate strategic reminders through text and announcements through email. Additionally, there are special communications to groups within the parish that we would like to send without having to send it to everyone. For these reasons and many others, we are excited about utilizing *Flocknote* to communicate with you.

What do I need to do next?

We are asking that all parishioners visit the following site and sign up with St. Elizabeth and St. Mary in Milton. The URL is:
<https://VisitationMilton.flocknote.com/everyone>

THE VISITATION COLLABORATIVE

Mandatory Virtus Training for Volunteers: Lectors, Faith Formation Teachers, and Choir Members.

September 11th, 2016
6:30pm – 8:30pm
Fr. Curley Hall

We begin by making adults of the Church that interact with children aware of how to protect children. Our Protecting God's Children program for adults is a Two-hour live awareness session instructing adults of the Church that to protect children you must have continuous awareness and vigilance. This awareness session makes trainees understand the signs of child sexual abuse, the methods and means by which offenders commit abuse, and five empowerment steps one can use to prevent child sexual abuse.

Please email denise.ilacqua@visitationmilton.org or call 617-698-5763 to register for the Virtus Training.

Community Service with your children

As we prepare for a new year of Faith Formation, we invite you to join us for another opportunity to share faith and community with our children and with each other. This collaborative project is an opportunity to come together and serve our local Milton community.

Beginning in October, we will have Faith and Family Fridays on the third Friday of each month from 6:30-8pm. We will have a family-friendly service project as well as time to socialize with one another. Let us know if you are interested in learning more about this exciting new program and we will send you the dates, projects, and how you and your family can be involved. In the meantime, feel free to reach out to us with any questions.

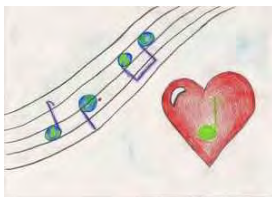
Kate Daley: kmcdaly@yahoo.com & Denise Ilacqua dilacqua@visitationmilton.org



We are excited to start up a High School Youth Group (Grade 9-12) for our Collaborative! Our first Visitation High School Youth Group will be held on **Sunday September 8th** after the Noon Teen Mass at St. Mary's, in the St. Mary's lower church. Parents and Teens welcome! I hope to listen to our teen's ideas, and also share a bold vision for how I think our group can grow. When/How often do you want to meet? What projects do you want to take part in? What social events would you like to be a part of? This is an exciting time for our Milton community. I look forward to meeting you on September 8th!

If you are a parent/teen/adult who wants to be involved, but cant make the meeting, please reach out to me! william.rein@visitationmilton.org. Please send me your ideas!

Please support our collaborative High School Youth Group with our Bottle and Can Drive! We are collecting bottles and cans to help build new opportunities for our young people. **Please bring your bottles and cans to the St. Mary's LOWER Garage area, and drop them off.** That's all! You save the hassle of removing the cans, and the youth in our community benefit from your support. It's a Win-Win! Thank you for your support.



Does your child like to sing? We welcome all children from St Elizabeth and St Mary's Parishes to join our children's choirs to sing for God's greater glory!

Junior Choir rehearses at St Elizabeth Church Hall Tuesday's 4:45-5:45 directly after Faith Formation. This choir is for first time younger students Grade 1-4. Miss Colleen Martin, a Milton Public Schools Music Teacher is the Conductor.

Intermediate Choir rehearses on Monday's 5-6:15 pm in St Elizabeth Church Hall. This group is typically for more advanced students Grades 5-8, however, some music students have been invited by audition.

Our Combined Children's Choirs sing the first and third Sundays of the month October through May. The children also sing for First Communion Masses. Mrs Anita Ashur-Wakim directs this choir and plays for both choirs at Masses. Anita is the Assistant Director of Music at St Elizabeth's and Soloist.

THE VISITATION COLLABORATIVE



Faith Formation

Grade pre-k through grade 5 parents may choose the time and curriculum that best fit your family's needs. All Middle School and Confirmation classes will be held in Fr. Curley Hall (downstairs of St. Elizabeth Church).

YOU CAN NOW REGISTER ONLINE FOR ALL CLASSES:

<https://www.visitationmilton.org/religiouseducation>

We are asking all Faith Formation parents to sign up with flocknote to receive communications by email or text. <http://VisitationMilton.flocknote.com/everyone>.

Grades Pre-k through Five

Classes at St. Elizabeth Campus Classes begin September 16/17

Pflaum Program: Grades 1-5
Classes meet Monday & Tuesday 3:45pm – 4:45pm
Location: Fr. Curley Hall

Catechesis of the Good Shepherd Program:
Pre- K – (Ages 4-6)
Classes meet Tuesdays 3:45 pm – 4:45 pm
Location: Cushing Room

Classes at St. Mary of the Hills Campus Classes begin September 22/23

Catechesis of the Good Shepherd Program:
Pre- K (Ages 4-6) and Grades 1-5
Classes meet Sundays 8:50am – 10:05am
and
Mondays 3:45pm – 5:00pm

Location: Atria in the lower church.

EDGE Middle School Program (Grades 6-8)

Classes begin September 18
Location: Fr. Curley Hall
Classes bi-weekly from 6:30-8:00 pm
1st, 3rd and 5th Wednesdays
Middle-school youth group on the 2nd and 4th
Wednesdays

Confirmation (Grades 9 & 10)

Classes begin September 16
Location: Fr. Curley Hall
Classes meet on Mondays at 7:45-8:45 pm

With Faith Formation starts very soon. There have been a lot of changes to our Confirmation Program. I look forward to sharing these changes, with you, handing out the Confirmation Packet and introducing myself to the community.

A **Grade 9-10 Parent Meeting** will be held on Monday, September 9th from 7-8pm at St. Elizabeth's Fr. Curley Hall. I look forward to meeting you there!

~ Will

William.rein@visitationmilton.org

Catechetical Sunday

To our wonderful volunteer Catechists, please plan to attend the annual Catechist Mass and Breakfast on Catechetical Sunday, September 15. Mass will be celebrated at 9:30 am at St. Elizabeth Church and breakfast will be served immediately downstairs in Fr. Curley Hall.



SAINT ELIZABETH

There are many ways to remember our loved ones both living and deceased. Perpetual Candles, Anniversary, Birthday, and Memorial Masses, donations of Flowers, Altar Breads and Wine and Sanctuary Light are just a few. If you would like to have your loved one remembered by making a donation to the following, please call the Collaborative office.

- | | |
|---------------------------------|-----------------------|
| Altar Breads and Wine | \$60 per week |
| Altar Flowers (1 Basket) | \$85 per week |
| Sanctuary Light | \$60 per month |

Mass cards for both the deceased as well as special intentions for the living are available.

Please support our priests by making a gift to the Clergy Health & Retirement Trust at clergytrust.org or by giving generously to the upcoming special collection on September 14/15. Funds from this second collection are independently managed by the Clergy Health and Retirement Trust with a majority lay board of trustees. The funds are used for the sole benefit of active and senior priests in good standing. Thank you for your generosity.

The Sanctuary light for September is given in loving memory of Richard J. Clasby and Susan Clasby Westhaver

The altar breads for this weekend were donated in memory of John & Josephine Walsh and their children with love from Claire Hooley.

Next weekend's second collection is for monthly maintenance.

St. Elizabeth

Last Weekend In Pew	Avg. Weekly Electronic giving	Last Weekend Total Offertory
\$5,166	\$950	\$6,116

Weekly Offertory Report

Last Weekend In Pew	Avg. Weekly Electronic giving	Last Weekend Total offertory
\$3,406	\$1,475	\$4,881

St. Mary of the Hills

SAINT MARY OF THE HILLS



HYMNS for this WEEKEND
Sing and make music from your heart to the Lord

- Praise to the Lord #195
- For the Healing of the Nations #427
- Humbly, Lord, We Worship You #202
- God Is Love #481



Perpetual Candles

In memory of: Timothy Driscoll, Ellen Carlson, Duncan Driscoll Finigan and Angel Langlais

For healing: Benicio Gobourne

Prayer Intention: Daniel Godleski

St. Mary of the Hills Perpetual Candle

I would like to reserve a candle for: One year (\$350)
OR One month (\$40)

Check payable to St. Mary of the Hills Parish

(Circle one) In MEMORY of/ HONOR of: /Special Intention

Your name: _____

Your address: _____

Your phone: _____

Email: _____

Please submit this form and your check, payable to St. Mary of the Hills, to the Collaborative office.

THE VISITATION COLLABORATIVE

COLLABORATIVE MASS INTENTIONS

SATURDAY, AUGUST 31

4:00 PM (SE) Austin, Celia & Daniel Tarpey,

Alfred & Pauline Tarpey

4:00 PM (SMH) Alphonso Williams

SUNDAY, SEPTEMBER 1

8:00 AM (SE) Mass for the People

9:30 AM (SE) Michael O'Connor

10:15 AM (SMH) Teresa & Marie Scully

11:30 AM (SE) Gloria C. Donovan:
birthday memorial

12:00 PM (SMH) Arthur Duffy

MONDAY, SEPTEMBER 2

9:00 AM (SE) Kathy Lovett

TUESDAY, SEPTEMBER 3

9:00 AM (SMH) Holy Souls

WEDNESDAY, SEPTEMBER 4

9:00 AM (SE) Daniel & Natalie O'Connor

THURSDAY, SEPTEMBER 5

9:00 AM (SMH) Lucia Vighiano

FRIDAY, SEPTEMBER 6

9:00 AM (SE) Walter D. Shea

SATURDAY, SEPTEMBER 7

9:00 AM (SM) Jeremiah Patrick Bowen

4:00 PM (SE) Herbert Coles: birthday
anniversary

4:00 PM (SMH) Respect Life

SUNDAY, SEPTEMBER 8

8:00 AM (SE) Kerry Madden

9:30 AM (SE) Evan Jones

10:15 AM (SMH) Peter Testa, Sr.

11:30 AM (SE) Michael O'Connell

12:00 PM (SMH) Robert Petchell

Prayer for Priestly Vocations

O Lord, my God, You renew the Church in every age by raising up priests for your altars, In Your Plan for our salvation You provide shepherds for Your people. Fill the hearts of young men with the spirit of courage and love that they may answer Your call generously. Give parents the grace to encourage vocations in their family by prayer and good example. Raise up worthy priests for Your Altars, ardent, but gentle servants of the Gospel. Give the Church more priests and keep them faithful in their love and service. May many young men choose to serve You by devoting themselves to the service of Your people.

St. Mary of the Hills School

-----THE INNOVATIVE SCHOOL-----

Currently accepting applications for the

2019-2020 academic year

Early Childhood Center

Early Learners (2.9) and

Preschool through Kindergarten

Elementary School, Grades 1-8

www.smhschool.org

*For more information or to schedule a tour
please call*

617-698-2464

250 Brook Road, Milton, MA 02186

Remember that when you are away, you can always find the Collaborative bulletin on our website:
Visitationmilton.org

THE VISITATION COLLABORATIVE

Collaborative Pastoral Plan

A writing team has been formed by Fr. Bennett to reflect, discern, discuss and draft a Christocentric local pastoral plan. *At the team's second meeting, members completed a "Scanning the Environment" survey. After discussion, an area of focus was agreed upon to begin the Pastoral Plan.* Team members will meet eight times over the course of the year to comprehensively examine the life of the parishes from varying perspectives in order to support mission-driven activity and planning. Our local Pastoral Plan must be submitted to the Cardinal for his approval by June 30, 2020.

Writing Team Members

Fr. Eric Bennett, Bill O'Brien, Theresa Carmody, Sonia Diaz, Mary Gilligan, Rita Taugher, Paul Gimber, Jim Holland, Denise Ilacqua, Paula Murphy, Amy Kline and Frank Connell

A local pastoral plan is a plan written by a unique mix of clergy, staff, council members, and other committed parishioners to help foster a culture of evangelization and discipleship in one particular collaborative of parishes. The Archdiocese provides direct support in the plan writing process. The collaborative plan writers will compose a "Vision Statement," laying out a clear direction for the community over the next 3 years, and draft three to five "SMART" goals to help realize that vision for evangelization and discipleship in the parishes. The local pastoral plan provides a vision to guide all the work of the parish and make it mission-centered, remembering always the Great Commission of Jesus, to "go and make disciples of all nations..." Explore the process, resources, and much more at www.disciplesinmission.com

You will be kept up to date throughout this process and your input is desired and encouraged. Please feel free to reach out to Fr. Bennett or any team member.

Or email:

pastoralplan@visitationmilton.org



RCIA is the preparatory formation for anyone who is interested in becoming Catholic. This includes those adults who are baptized as Christians but have not received their first Holy Communion and Confirmation. It also is the preparation for those adults who are not baptized and looking to be baptized.

We will be starting up our classes for RCIA in the coming weeks and we would like to invite anyone who is thinking about becoming Catholic to join us. If you know anyone who is thinking about becoming Catholic, please encourage them to get in contact with us. We would like to help them in discerning this desire. Last year we had two people enter into the Church at the Easter Vigil.

There are already two people who are interested in this preparation. There is no set scheduled day and time yet. It will be determined in part by the availability of those who are interested.

Please call the office with your contact information or email Fr. Bennett (frericbennett12@gmail.com).

PRAYER to SAINT MICHAEL

Saint Michael the Archangel, defend us in battle, be our protection against the wickedness and snares of the devil. May God rebuke him we humbly pray; and do thou, O Prince of the Heavenly host, by the power of God, cast into Hell Satan and all evil spirits who prowl about the world seeking the ruin of souls.

THE VISITATION COLLABORATIVE

COLLABORATIVE OFFICE

29 Saint Mary's Road, Milton, MA 02186

Phone: 617.696.0120 or 617-696-6688 / **St. Elizabeth Campus Faith Formation:** 617-698-5763

Fax: 617.696.7044

Www.visitationmilton.org

CLERGY

Rev. Eric M. Bennett, Pastor
frbennett@visitationmilton.org

Deacon Kevin P. Martin, Jr.
deaconkevin@smhmilton.org

COLLABORATIVE STAFF

Finance & Operations Mgr. Janice Powell
janice.powell@visitationmilton.org

Business Manager Mary Shea DiCenzo
mary.dicenzo@visitationmilton.org

Office Staff
Laura Phelan
laura.phelan@visitationmilton.org

Paula Murphy
paula.murphy@visitationmilton.org

Joan O'Brien
joan.obrien@visitationmilton.org

Barbara Lydon Christian service coordinator

FAITH FORMATION

Director (pre-k to Grade 5):
Denise Johnson- Ilacqua
denise.ilacqua@visitationmilton.org

Director (Grades 6-10) And Youth minister
Will Rein
william.rein@visitationmilton.org

Assistants
Adriana Goodfellow and Joan Rush
Catechesis of the Good Shepherd Coordinator
Lisa Martin
faithformation@visitationmilton.org

MUSIC

St. Elizabeth Parish

Director of Music Dr. George Ashur
gashur@yahoo.com
Asst. Dir. of Music/ Anita Ashur Wakim
Soloist wakimanita@gmail.com
Director of Youth Choir Colleen Martin
colleenmartin13@hotmail.com

St. Mary of the Hills Parish

Director of Music Dr. Peter Watchorn
617-354-5821 peter.watchorn@smhmilton.org
Noon Mass Music Leader: Frank Connell
smhfrankconnell@gmail.com
Cantors: Janice Wallace and Cyndi Fedewa



MCC Caring Circle 617-337-3225
www.mcccaringcircle.org

*Linking those in need with those who
can help*

Please pray for the fruitfulness of the Visitation Collaborative. May we open our hearts to allow the Holy Spirit to work within and among us. May we intentionally seek to lead others to Jesus through our actions and build His Church in our community.

SAINT MARY OF THE HILLS SCHOOL

Pre-K through 8 † 617-698-2464
250 Brook Road † www.smhschool.org
Principal: Julie Marotta

THE 2019 CATHOLICTV TELETHON

FRI 9/13 & SAT 9/14



Please watch and pledge your support to this very important work of the Church! Tune in on **cable** (Comcast 268; Verizon 296; Charter 101), **online** (CatholicTVLIVE.com), via **Roku, Amazon Fire, Samsung SmartTV, Apple TV**, or on your **mobile device**.



SPECIAL SEPTEMBER COLLECTION

Healthier Priests. Stronger Communities.

The strength and vibrancy of our communities depend largely on the welfare of our priests who tirelessly serve others from all walks of life.

Powerful examples of strength in community are visible across 144 cities and towns of the Archdiocese of Boston. The roots of these communities can be traced back to the work of our priests.

Pine Street Inn: A Boston priest was one of the original founders of Pine Street Inn, which provides shelter and emergency services for nearly 2,000 homeless men and women in the Boston area every day.

Cor Unum: Started by a Lawrence pastor, Cor Unum ("One Heart") food pantry serves more than 250,000 meals annually to poverty-stricken families in Lawrence.

Addiction Support for Families: A Boston priest's expertise in addiction and recovery has been instrumental for organizations helping families and individuals in the grips of addiction.

Rostro de Cristo: Efforts to help the poor on the margins of Ecuador's largest city is hard work, except for those who have been inspired by a Boston priest who started Rostro de Cristo, an organization based in Boston that lives the Gospel and serves the poor.

It's simple: healthier priests mean stronger communities.

Please support clergytrust.org

Funds from this special collection are managed by the Clergy Health and Retirement Trust – an independently managed trust with a majority lay board of trustees. The funds are used for the sole benefit of active and senior priests in good standing.



CELTIC KNIGHT DANCERS & THE TRINITY BAND ENSEMBLE OF DUBLIN



Irish Cultural Center • 200 New Boston Drive • Canton, MA
Saturday September 21, 2019 @ 2PM & 7:30PM
Tickets \$30 • Members \$25 • Tickets on Show Night \$35
For Tickets & Info: 781-821-8291



841 Main Street
Tewksbury, MA 01876
(978) 851-9103

Rosaries from Flowers
"Handmade from the Flowers of your Loved One"
www.rosariesfromflowers.com

EST 1932
BROWN BROS. ROOFING
We are Celebrating our 86th Year of Service
ROOFING • GUTTERS
CHIMNEY REPAIR
Free Estimates
Free Roof Inspection
781-329-2895
brownbrosoofing.net

TBROS
TRETHERWEY BROTHERS INC.
For all your cooling needs.
4280 Washington St. Roslindale MA
617-325-3283 tbros.com
lic# 11207

**Healthier Priests.
Stronger Communities.**
The strength of our communities depends on the well-being of our priests who tirelessly serve others.
Please support clergytrust.org

SPECIAL SEPTEMBER COLLECTION
Supports our priests in good standing

FAST CASH FOR YOUR HOME
Any Size Big Or Small | Any Condition We Buy Them All
✓ Downsizing ✓ House Needs Repairs
✓ Life Transition ✓ No Home Inspection
✓ Inherited Property ✓ Close In as Few as 5 Days

Call NOW for a FREE Evaluation of Your Home
As Seen On

781-819-5100 | www.GarmourGroup.com

SHOP LOCAL
HELP KEEP THE LOCAL ECONOMY VIBRANT.

Evangelization Focus

"The joy of the gospel fills the hearts and lives of all who encounter Jesus. Those who accept his offer of salvation are set free from sin, sorrow, inner emptiness and loneliness. With Christ joy is constantly born anew."
~Pope Francis

"God is Love" 1 John 4:8

We are pleased and honored to provide this bulletin for St. Elizabeth in Milton



We want to thank the advertisers on the back pages without whom this bulletin would not be possible.

We hope you enjoy your new bulletin, which is now available online as well as in print.

To receive this bulletin in your inbox each week, please signup at www.pilotbulletins.net/signup

Law Office of Philip D. Murphy
Philip D. Murphy
 JD, LL.M. (Taxation), Certified Elder Law Attorney
 National Academy of Elder Law Attorneys
 Specializing in Elder and Special Needs Law, Estate Planning, and Probate
 1050 Canton Ave., Milton, MA
 Phone: 617-273-5602 Cell: 617-548-7972
 Fax: 617-273-5603 pdmlaw@comcast.net

Bob's Automotive Service

 52 Hilda Street • Quincy
Call Us Today!
(617-773-1416)

Dolan Funeral Home & Cremation Services
617-698-6264
www.dolanfuneral.com
 Dolan & Chapman Funeral and Cremation Services

Murphy Dental Group, PLLC
 John M. Murphy, D.M.D.
 Patrick J. Murphy, D.M.D.
 New Patients Welcome
 Saturday and Evening Hours
 464 Granite Avenue
 Milton, MA 02186
 617-696-3900
www.jmurphydmd.com

Sean FARRELL
 EXCAVATION INC.
 ALL TYPES OF EXCAVATIONS
 Foundations - Water & Sewer
 Driveways - Retaining Walls
 Snow Plowing - Free Estimates
617-293-7660
SeanFarrellExcavation.com

M.SUSI Hot Mix Asphalt
 1586 Hyde Park Ave.
 Boston, MA 02136
 Quality Hot Mix Asphalt Products
 Open Year Round,
 including Saturdays April-December
 Plant: 617-361-3333 Office: 617-265-4525

J.F. ROOFING CO.
 Roofing • Windows • Repairs
 Slate & Copper
 Shingles - Rubber
Finbarr O'Connor
 617- 471- 8216
 FREE ESTIMATES

Beth Israel Deaconess Hospital
 Milton
Call the DoctorLine
 at 617-696-8809
 or visit bidmilton.org

The Most Important Number in Real Estate
KEATING BROKERAGE
no one will work harder for you
617-699-7179
www.keatingbrokerage.com
 Kevin G. Keating

Best Gourmet Weekly Meals and Catering Delivered Right to Your Door
 Custom & Holiday Catering
 Special Occasions • Gift Meals
 Finest, Freshest Ingredients
Stephanie McFadden
 617-529-0509
 Check us out online! www.cookinginwithstephanie.com

Smitty's Barbershop
 Tuesday-Friday: 9AM-4PM
 Saturday: 7AM-12:30PM
 1158 Washington St.
 Lower Mills Dorchester Ma
(617) 690-2420

KELLEY PROPERTIES & REG.
KELLEY & REGE PROPERTIES, INC.
 378 Granite Avenue
 Milton, MA 02186
FRANCINE JEFFERS
 Cell (617) 710-4997
 Office (617) 696-6100 Ext. 208
 fjeffers@kelleyrege.com
www.franstagedtosell.com

DEVENEY & WHITE MEMORIALS
Cemetery Headstones & Engraving
 Since 1898
 664 Gallivan Blvd. Dorchester
617 288-3080
www.deveneyandwhite.com

Adams Corner Cafe
 Butcher Shop
 Dorchester, MA
 Café: **(617) 506-7387** | Butcher: **(617) 288-5100**

10% OFF BREAKFAST & LUNCH MONDAY-FRIDAY
 Valid until 1/31/19
 Not to be combined with other offers.
 Serving Breakfast, Lunch & Dinner
FULL BUTCHER SHOP
 Imported Irish Foods
 782 Adams St. Dorchester

WILLIAMS
 "Solid Service since 1919"
PLUMBING • HEATING • AIR CONDITIONING
 E-mail: info@mywilliamsenergy.com
 Lic.#15278/3654c
 Braintree, MA
 (781)-843-0415

MILTON RESIDENCES FOR THE ELDERLY
 ESTABLISHED 1968
 A Senior Housing Community for Independent Living and Affordable Assisted Living with services
 CALL 617-698-3005 FOR MORE INFORMATION.
WWW.MREINC.ORG

Allen General Contracting
 Frame to Finish
Anthony Allen
 Owner
617-733-1861
 Additions, Renovations, Kitchens & Bathrooms, Windows, Doors, Decks, Siding & Gutters

R.B. COOKE & SON, INC.
 Specialists in Moving • Packing • Crating Antiques
 Family-Owned and Operated, Since 1946
 Long Distance Moving • Local Moving
 Specializing in Antiques & Fine Arts Storage
 Fully Insured and Licensed
 616 South St., Holbrook, MA
617-265-1900 • www.rbcooke.com

AD SPACE AVAILABLE
617-779-3771

Central Avenue Garage
 35 Years in Business
 Mon-Fri: 7:30AM-5PM
 18 Central Ave., Milton
(617) 698-9617

WILLIAM RAVEIS
 REAL ESTATE • MORTGAGE • INSURANCE
 The Largest Family-Owned Real Estate Company in the Northeast
Thinking of Buying or Selling?
 You Are Home With Huntington

Kathleen Huntington
 95 Eliot St., Milton, MA 02186
 Kathy.Huntington@raveis.com
 C (617) 922-0527
 O (617) 322-3933

GREEN HILLS
 Sunday: 6AM-3PM
 Monday: 5AM-3PM
 Tuesday-Saturday: 5AM-6PM
 Desserts, Sandwiches, Breads, and more!
 617-825-8187 • 780 Adams St., Dorchester

LOPEZ THE FLORIST
 Four Generations of Florists
 Delivery Anywhere! All Occasions!
 Mention This Ad & Get 10% OFF!
 742 Adams St.
 Dorchester, MA 02122
ph: (617) 265-8801 f: (617) 265-0771

John E. Driscoll
 Residential • Commercial • Insured
 Spring & Fall Clean Ups • Weekly Lawn Maintenance
 Mulching • Weeding & Flower Care • Rubbish Removal
 Hedge & Shrub Trimming • Snowplowing/Bobcat Service Available
617-698-3109