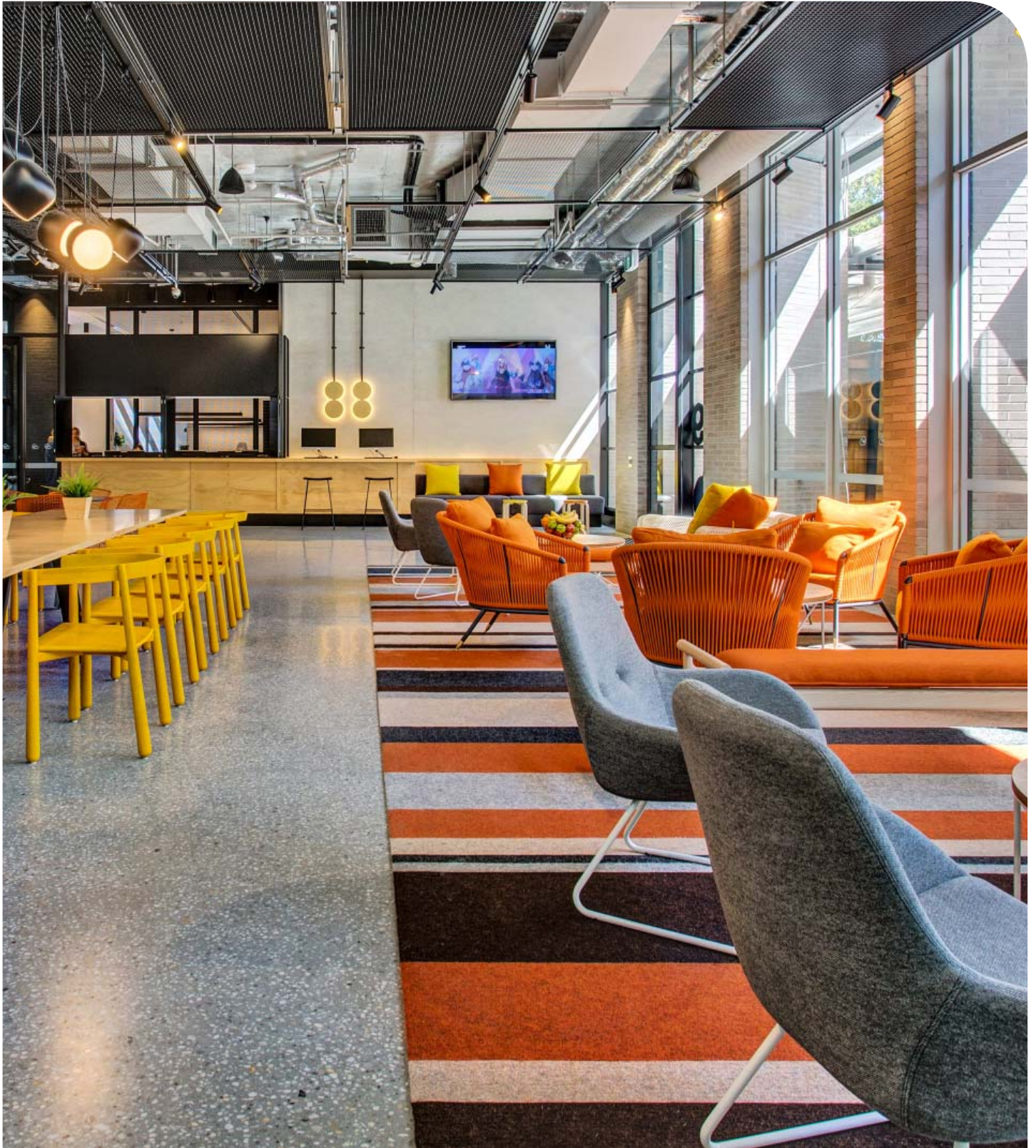




DISCOVER IGLU

A COOL HOME FOR RMIT STUDY
ABROAD & EXCHANGE STUDENTS



www.iglu.com.au

IGLU MELBOURNE CITY

Cool design.
Warm hospitality.



THAT'S WHAT IGLU IS ALL ABOUT.

Iglu buildings are purpose-built to provide the best student living experience. From the fresh, fully furnished living spaces to the sharp, contemporary community facilities, Iglu Melbourne City is the perfect place for students to call home.

Its ultra-convenient location – right across the road from the popular Queen Victoria Market and a short walk from the main RMIT University city campus on La Trobe and Swanston Streets – puts you right in the centre of Melbourne's action.

Innovative and cutting-edge, it is set across two distinctive towers with inter-connecting study and social spaces that allow you to select your own living and study experience.

Combine this with Iglu's warm hospitality and you won't want to choose any other address.





229 FRANKLIN STREET
MELBOURNE VIC 3004

THE BEST LOCATION FOR STUDENTS ON THE MARKET

Iglu Melbourne City is no exception to Iglu's location philosophy – where we want you to have everything you need on your doorstep.

Located on Franklin Street, directly opposite the Queen Victoria Market, and within Melbourne's Free Tram Zone, it is just a short walk or cycle to the main RMIT University city campus making it the perfect home for RMIT Study Abroad & Exchange students. You can see from the map opposite, how convenient the location is. In addition to being so close to campus, you also have public transport, shopping, dining, fitness and entertainment facilities all within easy reach.

The Melbourne CBD, with its amazing shopping, laneways and eateries, is your playground. Walk 10 minutes and you will be in the heart of the main shopping precinct which spans several blocks. Walk a little further or jump onto Melbourne's tram network to explore Southbank and beyond. You can easily escape to Flagstaff Gardens when you want to feel some grass between your toes and for a dose of local 'cool', North Melbourne, Carlton and Fitzroy are within easy reach.



ALL TIMES ARE ESTIMATED AND SHOULD BE USED AS A GUIDE ONLY

SHARE WITH OTHERS

Iglu Melbourne City offers a range of fully furnished options, giving you flexibility when choosing your share apartment. Live with friends or make new ones in a cool 5 or 6-bedroom apartment. We want to make sure you are totally comfortable and enjoy your student accommodation so get in early and you can choose a female only, male only or mixed gender apartment.



WHAT'S INCLUDED?

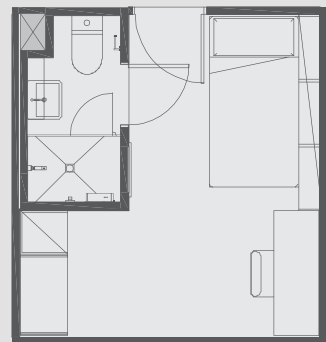
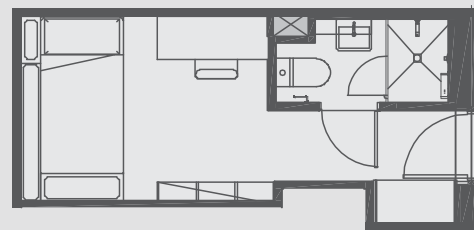
BEDROOM

- › Wireless internet
- › Private en-suite bathroom
- › Air-conditioning and heating
- › King-single bed with deep built-in storage
- › Study desk, chair and lamp
- › Handy pin-board
- › Bookshelf and storage space
- › Built-in wardrobe and full length mirror

APARTMENT

- › HD Smart television
- › Air-conditioning and heating
- › Lounge area with sofa and coffee table
- › Dining table and chairs
- › Full kitchen with oven, microwave, stovetop, large refrigerator and freezer, kettle and toaster

BEDROOM SIZE IS APPROX. 13.5M²
SHARED KITCHEN & DINING AREA IS APPROX. 23M²



LIMITED NUMBER AVAILABLE IN FRONT TOWER ONLY

SAMPLE SHARE APARTMENT BEDROOM FLOOR PLANS »



CHOOSE YOUR OWN STUDIO

While sharing is great for some, it's not for everyone. We understand that others might prefer their space. If that's you, a studio apartment is perfect. You get a little extra privacy with your own kitchenette, living and study space but still enjoy all of the social interaction and benefits of a great student community.

WHAT'S INCLUDED?

- › Wireless internet
- › Wall-mounted HD Smart television
- › Double bed with deep built-in storage
- › Private en-suite bathroom
- › Air-conditioning and heating
- › Study desk, chair and lamp
- › Handy pin-board
- › Bookshelves and storage
- › Table and chairs
- › Built-in wardrobe and full length mirror
- › Kitchenette with microwave/convection oven, two-burner stovetop, refrigerator, kettle and toaster

Standard and Premium studios are available. Premium Studios offer district views over the Queen Victoria Market. They are on the street side of the podium and tower (from level 10 upwards).

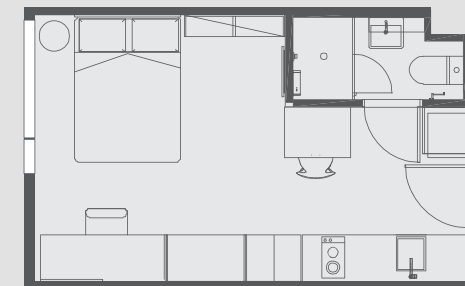


All of these features plus your water, electricity and use of all facilities are included in your weekly rental fee



PREMIUM STUDIO SHOWN

STUDIO SIZE IS APPROX. 21M²



FLOOR PLAN A › STANDARD OR PREMIUM STUDIOS



FLOOR PLAN B › STANDARD STUDIOS ONLY



SAMPLE STUDIO APARTMENT FLOOR PLANS »

OUTSIDE YOUR ROOM

We want you to always feel at home when you live at Iglu. That's why there's always something to do here and there's always someone you can contact for help, day and night.



WI-FI INCLUDED

Stay connected to highspeed wi-fi wherever you are in the building.



THE GREAT OUTDOORS

Courtyards to get some fresh air or cook up a storm on the BBQ.



SECURITY & SUPPORT

CCTV, electronic card access to all areas and 24x7 onsite support.



SOCIAL SPACES

Communal café, lounges with large screen TVs and games areas.



COOL EVENTS PROGRAM

Connect and make new friends at our resident community regular events.



ONSITE LAUNDRY FACILITIES

Access to washing machines and dryers whenever you need it.



SPACE TO STUDY

A range of study areas, including a library den, to make study a pleasure.



BICYCLE STORAGE AREA

A great form of exercise and environmentally friendly.



GYM & EXERCISE AREA

Use the in-house gym to stay fit and healthy without leaving the building.

COOL EXTRAS INCLUDED FOR RMIT STUDY ABROAD & EXCHANGE STUDENTS



UNLIMITED INTERNET

You will never run out of data with complimentary access to our cool unlimited internet package.



AIRPORT PICK-UP

We will take the stress out of arriving in a new city by organising for you to be met by our airport transfer partner.



KIT OUT MY IGLU PACK

Essential items like bedding, towels, eating utensils and laundry basket to help you settle in quickly.

Interested?

If you are planning to study at RMIT and Iglu Melbourne City sounds like the perfect place to call home, you can use our exclusive RMIT booking enquiry form to register your interest today.

Just go to www.iglu.com.au/rmit



Iglu Melbourne City. 229 Franklin Street, Melbourne VIC 3004

+61 3 9002 5600 // melbournecity@iglu.com.au // [IgluMelbourneCity](https://www.facebook.com/IgluMelbourneCity)

#livecoolatiglu | www.iglu.com.au/melbourne-city