



Education/Higher-ed Portfolio

With a deep interest in creating functional, adaptable spaces that not only support but encourage learning, discovery and growth; and welcoming environments that support active participation, Architrave has steadfastly compiled its portfolio of completed work for education. From projects which support students in elementary education to students in higher education, and from development of individual teaching spaces to development of a complete campus, our work encompasses a broad educational range.



Firm Brief

Description



Architrave, Ltd. is an award-winning firm incorporated and licensed to practice architecture in the State of Illinois in 1986. Architectural services offered include sustainable building design and construction administration, site planning, preparation of feasibility studies and space planning. Architrave's practice has focused on design for institutional clients including commercial, health care, educational and transportation project types. Completed projects include LEED Certified new buildings, additions to existing structures, renovations, restorations and tenant space developments.



Clients

Architrave's clients include:

- Advocate Health Care
- Rush University Medical Center
- University of Chicago Medicine
- University of Chicago
- Loyola University Medical Center
- University of Illinois at Chicago
- Chicago Public Building Commission
- Chicago Transit Authority
- Chicago Housing Authority

Services / Credentials

- Sustainable building design
- Planning and feasibility studies
- Construction administration
- In-depth design experience:
 - ◊ Educational facilities
 - ◊ Healthcare facilities
 - ◊ Transit facilities
- LEED Accredited Professionals– USGBC
- Self-Certified- Chicago Department of Buildings
- MBE Certified– City of Chicago and Illinois CMS
- DBE Certified– Metra



Awards / Recognitions

Benito Juarez High School– Chicago Public Schools

In forming a unique urban campus, the new performing arts addition also buffers open areas, including an academic plaza and athletic fields, from busy Cermak Road.

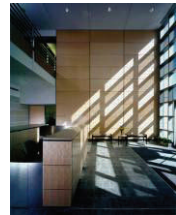
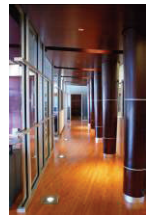
Benito Juarez High School– Chicago Public Schools

2011 Citation– Contributing site in the Pilsen Sustainable Street initiative dubbed “The Greenest Street in America”.

Ralph J. Pomeroy Apartments –Chicago Housing Authority

2013 Preservation Award for Rehabilitation- Richard H. Driehaus Foundation

2013 LEED Platinum Certification- USGBC



New High Bay Building

Chicago, Illinois

Owner

University of Chicago

planning & design team

Architect - Architrave, Ltd.
 Structural—David Mason Associates
 MEPFP— db HMS
 Civil / Landscape—Terra Engineering

completion date

03/2021

construction cost

\$ 10.4 Million

project description

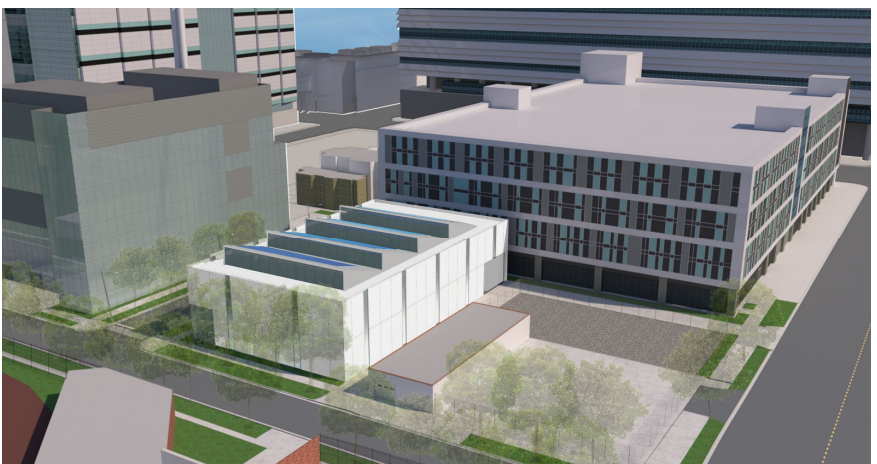
Through Integrated Project Delivery Services (IPDS), the new 1 story 20,000 sf New High Bay Building at the University of Chicago will provide best-in-class high bay experiment space to meet current and planned future large physical sciences research and device fabrication. The floor plan, with its two parallel high bays, accommodates the largest contiguous high bay research space with minimal staff and building support space tucked under a storage and equipment mezzanine. The structural steel building, with its precast and metal wall panels, curtain wall system, and white membrane roof, extends the university architecture beyond its western boundary.

design solutions

To mitigate the structure’s large scale, the design seeks to reinforce the human scale. On the building’s facades, a breakdown of the volume’s large mass is achieved by the insertion of glass slots between distinct panels. These are repeated on opposite facades, conceptually forming slices through the building. On the roof, saw-tooth clerestory structures synchronize with the glass slots to pierce the large roof’s mass and introduce north light into the building’s interior. This project is pursuing LEED Silver certification.

project services

Architrave provided planning services through the Construction Administration phase.



Grossman Institute Chicago, Illinois

owner:

The University of Chicago

design team:

Architect - Architrave, Ltd.
 MEP/FP & Structural Engineering—
 KJWW Engineering Consultants
 Lab Consultants—HERA, Inc.

completion date:

October 2014

construction cost:

\$4.5 million

project description:

The project comprised the gut/rehabilitation of the entire 4th floor of the Surgery Brain Research Institute (J4). J4 formally housed 17 surgery operating rooms and support spaces. New program included 9,500 SF wet labs and 3,500 SF primate & rodent labs for the new director of the Department of Neurosciences. Project was phased and a fast-track schedule was developed with UC's Construction Manager (Gilbane) to expedite the project schedule.

design solutions:

New glazing will replace existing stone panels bringing natural light into the labs. Infrastructure work included (2) new AHU's in the penthouse and all new mechanical, electrical, plumbing & fire protection on the 4th floor. The wet labs were designed to maximize flexibility by creating modules of open labs and support rooms. Collaboration areas off of the public corridor were added to encourage informal collaboration among lab users.

project services:

Architrave provided all design services from schematic design through construction administration.



Rush Alzheimer’s Research Center (RADC)

Chicago, Illinois

Owner

Rush University Medical Center

design team

Architect - Architrave, Ltd.
MEPFP—Grumman/Butkus Associates

completion date

2017

construction cost

\$5,600,000

project description

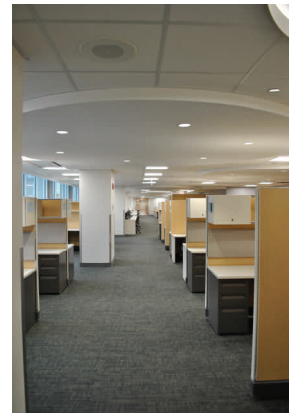
This project consists of approximately 30,000 SF of space on two levels of an office building on the Rush University Medical Campus. The main level houses the Alzheimer’s Disease Center Research Lab, and Offices. Areas include reception, 30 private offices, 5,000SF of open office area, conferences rooms, kitchenette, a 4,000 SF state-of-the-art research lab and toilet rooms. The lower level houses the grossing lab, main conference room, large break room, toilet and locker rooms, copy and print room office, storage and lab storage including tissue slides housed in high density storage units.

design solutions

In designing the RADC, creating adjacencies between departments and the positioning of the lab were key objectives. The existing departments were housed in seven different locations across RUMC campus and tissue collection was done from one building to another. This project united the entire department on two floors in the Jelke building and makes retrieving tissue from the morgue in Jelke very efficient. Finishes were selected to evoke a professional yet relaxed atmosphere in the office areas while providing a clean, crisp quality in the lab areas.

project services

Architrave provided design services from programming through design and construction administration.



PSD Teaching Lab Renovation - Hinds & Kersten Chicago, Illinois

owner:

University of Chicago

design team:

Architect—Architrave, Ltd.
MEPFP—IMEG Corp.
Planners—EYP

completion date:

September, 2017

construction cost:

\$ 400,000

project description:

Interior renovation of multiple classrooms and a lecture hall in the Kersten Building and a teaching laboratory in the Hinds building.

design solutions:

The renovation of classrooms and a lecture hall in the Kersten Building was completed to support the Astrophysics course sections beginning fall semester 2017. The teaching laboratory in the Hinds building was designed for introductory Geology courses and included a flexible room layout to accommodate multiple course objectives and activities.

project services:

Architrave provided all design services from schematic design through construction administration.



PSD Teaching Lab Renovation - Kent 305

Chicago, Illinois

owner:

University of Chicago

design team:

Architect—Architrave, Ltd.
MEPFP—IMEG Corp.
Planners—EYP

completion date:

January, 2018

construction cost:

\$ 510,000

project description:

Interior renovation of a 1,000 square foot teaching wet lab on the third floor of the Kent Chemical Laboratory Building and associated ADA path-of-travel improvements.

design solutions:

The renovation of Kent 305 was completed to support the Chemistry and Organic Chemistry course sections beginning spring semester 2018. The lab was designed with an emphasis on flexibility, expansion and accessibility.

project services:

Architrave provided all design services from schematic design through construction administration.



Ancient DNA Lab

Chicago, Illinois

owner:

University of Chicago Medicine

design team:

Architect— Architrave, Ltd.
MEP—IMEG Corp.

completion date:

July 2019

construction cost:

\$740,000

project description:

Interior renovation of a 1,750 SF cleanroom research lab in the Sub-basement of the Gordon Center for Integrative Science building with associated office and support spaces. The work included reconfiguration of the spaces and modifications to the mechanical and lighting systems to provide various cleanroom environments and control contamination throughout.

design solutions:

The renovation supports research and activities of the Ancient DNA lab in the Department of Human Genetics beginning summer of 2019. The lab is designed to be Class 100 (ISO 5) cleanroom lab for research activities, with an emphasis on three labs for independent research and support spaces. Elements of layout, equipment and furniture, and mechanical systems focus on contamination control throughout the lab spaces.

project services:

Architrave provided all design services from schematic design through construction administration.



Cell Screening Lab

Chicago, Illinois

owner:

University of Chicago Medicine

design team:

Architect— Architrave, Ltd.
MEP— IMEG Corp.

completion date:

May 2019

construction cost:

\$165,000

project description:

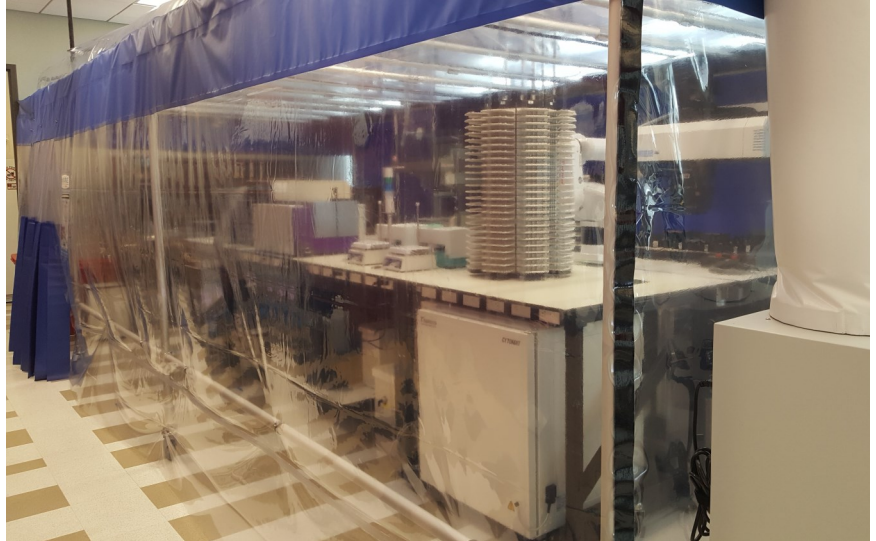
Interior renovation of a 1,750 SF research wet lab on the 4th floor of the Knapp Center for Biomedical Discovery building with associated office space. The project scope included the renovation / repurposing of an existing laboratory suite for the Cellular Screening Center for research and collaborative functions. The alterations included reconfiguration of the space with modified MEP systems and distribution, and provides a softwall cleanroom enclosure for specified functions.

design solutions:

The renovation supports research and activities of the Cellular Screening Center with the Institute for Genomics & Systems Biology beginning in Spring 2019. The lab is designed to include a Class 100 (ISO 5) cleanroom environment for research activities, with an emphasis on flexibility, accessibility, and collaboration through diverse research spaces. This is achieved with the inclusion of a softwall cleanroom (BioBubble) enclosure, which provides an adaptable and cost-effective solution for upgrading an existing lab space.

project services:

Architrave provided all design services from schematic design through construction administration.



UC—IME Design Lab HEP

Chicago, Illinois

owner:

The University of Chicago

design team:

Architect—Architrave, Ltd.

MEP—TRC Worldwide Engineering, Inc.

completion date:

November, 2018

construction cost:

\$ 172,600

project description:

Finishes and MEP upgrades to 5,200 SF of high bay workshop space in the University of Chicago’s High Energy Physics Building, formerly used for assembling large scale physics experiments. New programmed areas included dry lab space, a lounge, conference and breakout rooms.

design solutions:

The Institute for Molecular Engineering’s Design Course sought to appropriate the high bay space with minimal architectural interventions and instead focus on increasing functionality and occupant comfort through selective finishes upgrades, FF&E and MEP improvements, all while maintaining the creative potential of the experimental workshop that preceded it.

project services:

Architrave provided all design services from programming through design and construction administration.



1155 East 60th Feasibility Study

Chicago, Illinois

owner:

The University of Chicago

design team:

Architect– Interior—Tilton Kelly + Bell
Architect– Exterior—Architrave, Ltd.
Engineer– Structural/MEP– TRC
World Wide Engineering, LLC

completion date:

December 2018

construction cost:

TBD

project description:

Conceptual design to study the feasibility of reusing and reimagining a three & four story 185,000 SF 1960's structure, located on the University of Chicago Midway, to better serve new programs and stand alongside its prominent architectural neighbors.

design solutions:

To accomplish study objectives, key project challenges were met— Through design of a new, clearly identifiable, accessible primary entry and realignment of circulation, a clear and inviting entry sequence was created. Through selective addition/ expansion of fenestration, particularly on prominent facades including an all-glass entry lobby and arcade, the user experience and building's exterior were greatly enhanced. Finally, beginning with the new monumental entry stair and reinforced by realigned circulation through the building, reactivation of the building's courtyards was achieved.

project services:

Programming and Feasibility study



Benito Juarez High School Campus Chicago, Illinois

owner:
Chicago Public Schools

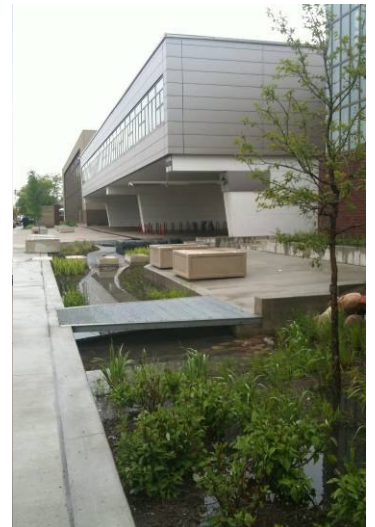
design team:
Managing Architect:
OWP&P
Architect of Record:
Architrave, Ltd.
Consultants:
Structural & MEPFP -
Globetrotters Engineering Corp.
Civil/Landscape -
Terra Engineers, Ltd.
Landscape (Blue Island Plaza)-
Site Design Group
Theater -
Schuler Shook
Audio and Acoustical-
Shen Milsom Wilke
Hardware -
George Krug

completion date:
2009

construction cost:
\$30,000,000

project description:
New 63,000 SF two-story performing arts addition containing a 500-seat auditorium and 9 classrooms and renovation of the existing 144,000 SF high school building primarily including upgrades and replacement of major mechanical and electrical systems.

design solutions:
Through annexation of adjacent industrial land, a unique urban campus is created at Juarez High School. Academic structures, including the new performing arts addition located along the site's southern edge help buffer campus open areas from busy Cermak Road. Campus open areas include: an academic plaza and athletic fields as well as a new civic plaza located along Blue Island Ave. memorializing Hispanic heritage.



James L Shields Middle School Chicago, Illinois

owner:

Public Building Commission of Chicago

design team:

PBC Design Architect: SMNG-A Architects, Ltd.
 Architect of Record: Architrave, Ltd.
 MEP/FP Consultants: Globetrotters Engineering Corp.
 Structural Consultants: McDonough Associates Inc.
 LEED Consultant: HJ Kessler and Associates
 Civil/Landscape Consultants: Terra Engineers, Ltd.
 Architectural Consultants: Offenberg-Tiritilli Architects
 Cost Consultants: Vistara Constr. Services, Inc
 Theater Consultant: Schuler Shook
 Acoustical Consultant: Shiner + Assoc, Inc.
 Hardware Consultant: George Krug

completion date:

2012

estimated construction cost:

\$25,800,000

project description:

Design to serve 900 students. This 105,000 SF, three-story, steel frame and masonry construction building includes science, computer, music, and art classrooms, in addition to library, gymnasium, and dining facilities. In 2013, the project was honored with the Chicago Association of Realtors Good Neighbor Award.

design solutions:

The L shape design organizes school functions into a classroom wing along the east-west axis and common and staff areas into a wing along the north-south axis.

A mandated minimum silver certification level guides the project's sustainable design which includes extensive use of natural lighting, green roofs, high performance building envelope components and energy saving building mechanical systems.

project services:

Design development, construction documents and construction administration.

