



quality^{to}
the **core**[®]



PABCO[®]

a division of PABCO[®] building products, LLC

Gypsum

**CONSTRUCTION GUIDE
FIRE & SOUND RATED SYSTEMS**



MGM CityCenter, Las Vegas, NV: Utilized approximately 18 mil s.f. of PABCO[®] Gypsum wallboard

2nd Edition

PRODUCT DIRECTORY







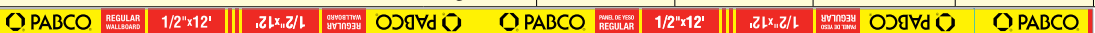

Standards & Specifications

"Quality to the Core"®

PABCO® Gypsum
a division of PABCO® building products, LLC
PO Box 417094
Rancho Cordova, CA 95741
Technical Services: 866-282-9298
www.pabco gypsum.com

PABCO® Gypsum provides this "Product Directory" reference table as a listing of our gypsum board and gypsum sheathing products. Included below are the panel available thicknesses, sizes, edge types, applicable ASTM product Standards, and assigned UL gypsum core 'types' for each product listed.

Specific data for products listed below is available on their respective individual Specification/ Submittal Sheets which are available from your PABCO® representative, as well as on our web site: www.pabco gypsum.com. Other lengths and edge types may be available on a special order basis. Contact your local PABCO® representative, or call PABCO® Technical Services at 866-282-9298.

PABCO® Product Description & Core Type		Thickness (in)	Width (in.)	Length (ft.)	Edge Type	ASTM Std.	UL Core Type
ABUSE CURB™ Impact, Abrasion, Indentation Scuff, Moisture & Mold Resistant Gypsum Board Type X		5/8"	48"	12'	Tapered	C 1629	PG-5W
							
MOLD CURB® PLUS Regular Mold, Water Resistant Gypsum Board Type X		1/2" 5/8"	48"	8' - 12'	Tapered	C 1396	NA PG-5W
							
FLAME CURB® Type X, Type XXX, & Super C Cores		1/2" 1/2" 5/8" 5/8"	48" 48" & 54" 48"	8-12'	Tapered	C 1396	PG-3 PG-C PG-11* TYPE C
							
*PG-11 replaces PG-9							
EXTERIOR SOFFIT Regular Exterior Gypsum Soffit Board		1/2" 1/2" 5/8" 5/8"	48"	8-12'	Tapered	C 1396	PG-3 PG-C PG-11 TYPE C
							
SHEATHING Regular Gypsum Sheathing		1/2" 5/8"	48"	8'	Square	C 1396	NA PG-5WS
							
PABCORE® SHAFTLINER & MOLD CURB® PLUS SHAFTLINER Gypsum Liner Board - Type X Core		1"	24"	8' - 14'	Beveled	C 1396	PG-10
CEILING BOARD Regular Gypsum Ceiling Board		1/2"	48"	12'	Tapered Round Edge	C 1396	NA
							
REGULAR Gypsum Board Regular		3/8" 1/2"	48" 48" & 54"	8' 8' - 14'	Tapered	C 1396	NA
							
WATER CURB® Regular Gypsum Backing Board - Treated Core		1/2" 5/8"	48"	8' - 12'	Tapered	C 1396	NA PG-5W
							

UL FIRE RATED SYSTEM ASSEMBLY CROSS REFERENCE by PRODUCT

PABCO® products currently manufactured below are appropriate to use in the following UL Fire Rated Assemblies, as shown in UL CKNX.R7094. March 2009

PABCO® Product	UL Core	width	UL Fire Rated System Assembly listing
<ul style="list-style-type: none"> 5/8" FLAME CURB® type X 5/8" Soffit Board type X 	PG-11*	46" to 54"	5/8 in. thick, 46 to 54 in. wide, Type PG-11 for use in Design Nos.: G501, G503, G505, G507, G508, G531, L501, L508, L532, L556, L591, N501, N502, N505, P508, P510, P511, P517, P540, P541, U017, U026, U207, U208, U301, U302, U305, U309, U321, U326, U329, U330, U337, U338, U339, U341, U342, U344, U351, U354, U355, U356, U357, U358, U360, U364, U368, U369, U374, U379, U411, U418, U420, U421, U425, U434, U436, U439, U442, U445, U449, U450, U460, U465, U466, U467, U469, U473, U485, U487, U494, U502, U504, U505, U506, U510, U512, U603, U606, U609, U615, U617, U622, U625, U637, U640, V417, V419, V421, V431, X508, X510, X516, X517, X525, X526, X527, X528.
<ul style="list-style-type: none"> 5/8" FLAME CURB® Super C 5/8" Soffit Board Super C 	Type C	48"	5/8 in. thick, 4 ft wide, Type C for use in Design Nos.: D301, D501, D502, G501, G503, G505, G512, G515, G521, G523, G525, G526, G527, G528, G529, G530, G531, G538, J501, J502, J503, J504, L501, L505, L508, L511, L512, L513, L514, L516, L520, L523, L525, L526, L527, L528, L529, L530, L538, L539, L540, L541, L548, L588, L591, L592, N501, N502, N505, P501, P502, P503, P504, P505, P506, P507, P508, P509, P510, P513, P514, P519, P549, U023, U301, U302, U305, U309, U311, U329, U333, U334, U340, U342, U354, U355, U379, U411, U428, U429, U442, U445, U451, U457, U465, U466, U467, U469, U473, U485, U501, U502, U504, U505, U506, U510, U512, U602, U603, U605, U617, U618, U627, U634, U635, U639, U640, U642, U643, U644, U645, V414, V417, V419, X501, X502, X504, X508, X509, X516, X517, X525, X526, X527, X528.
<ul style="list-style-type: none"> 1/2" FLAME CURB® Super C 	PG-C	48"	1/2 in. thick, 4 ft wide, Type PG-C for use in Design Nos.: G502, G504, G515, G523, G524, G526, G527, G528, G529, G530, G531, G533, G534, L502, L503, L504, L507, L510, L512, L514, L524, L525, L530, L542, P237, P510, P512, U312, U317, U320, U406, U410, U412, U426, U428, U429, U435, U436, U438, U440, U441, U443, U444, U448, U451, U452, U453, U454, U455, U467, U474, U478, U601, U603, U608, U611, U613, U614, U619, U620, U910, U912, U914, V418, X507, X513, X514, X515, X518, X520, X521, X522, X523, X524, X530, X531.
<ul style="list-style-type: none"> 1/2" FLAME CURB® type XXX 1/2" Soffit type XXX 	PG-3	48"	1/2 in. thick, 4 ft wide, Type PG-3 for use in Design Nos.: G502, G504, G523, G524, G526, G528, L502, L503, L504, L507, L580, P237, U312, U317, U410, U502, U603, U608, U611, U613, U614, U619, U620, X513, X520.
<td>46" to 54"</td> <td>1/2 in. thick, 46 to 54 in. wide, Type PG-3 for use in Design Nos.: G504, L503, L504, U317, U502, U611, U613, U614.</td>		46" to 54"	1/2 in. thick, 46 to 54 in. wide, Type PG-3 for use in Design Nos.: G504, L503, L504, U317, U502, U611, U613, U614.
<ul style="list-style-type: none"> 5/8" WATER CURB® type X 5/8" MOLD CURB® Plus type X 5/8" Gypsum Sheathing type X 5/8" MOLD CURB® Plus Sheathing type X ABUSE CURB™ 	PG-5W PG-5WS	48"	5/8 in. thick, 4 ft wide, Type PG-3W, PG-3WS, PG-5W or PG-5WS for use in Design Nos.: U301, U305, U342, U354, U355, U379.
<td>46" to 54"</td> <td>5/8 in. thick, 46 to 54 in. wide, Type PG-5W or PG-5WS for use in Design Nos.: U301, U305, U354, U379.</td>		46" to 54"	5/8 in. thick, 46 to 54 in. wide, Type PG-5W or PG-5WS for use in Design Nos.: U301, U305, U354, U379.
<ul style="list-style-type: none"> 1" PABCORE® SHAFTLINER, 1" PABCORE® MOLD CURB® Plus SHAFTLINER 	PG-10	24"	1 in. thick, 24 in. wide Type PG-10 for use in Design Nos. U428, U429.



PABCO GLASS

EXTERIOR SHEATHING

Fiberglass Reinforced Mold- & Water-Resistant
Exterior Gypsum Sheathing

ADVANTAGES:

- ◆ Designed for exterior and interior application systems.
- ◆ Proprietary formula treated gypsum core is fire resistant, mold-resistant, water-resistant, and reinforced with glass fibers to increase resilience.
- ◆ Fiberglass mat face and back provides exceptional dimensional stability with resistance to warping, rippling, buckling, and sagging.
- ◆ Non combustible, naturally fire-resistant.
- ◆ Twelve-month exposure warranty.
- ◆ Meets or exceeds ASTM C1177.
- ◆ Engineered with water- and mold-resistance, achieving the highest score possible when tested in accordance to ASTM D3273.



BUILT
PABCO Tough
— TO —
WEATHER™

quality
to
the core®

INTRODUCING

Strong
Tough
Resilient



Simply Unbeatable

ABUSE CURB™ High Impact Gypsum Board

Are your walls tough enough?

- Impact resistant
- Abrasion resistant
- Indentation resistant
- Scuff resistant
- Mold resistant
- Water resistant

Now I have peace of mind thanks to
PABCO Gypsum. Quality at Work, Quality to the Core®
www.pabco gypsum.com • 866.282.9298



PABCO® Gypsum

a division of PABCO® building products, LLC

"Quality to the Core"®



PABCO® ABUSE CURB® products feature FUNGIBLOCK™ technology from The Dow Chemical Company, the key mold-resistant additive in PABCO's ABUSE CURB family of products

INTRODUCING



- Lighter than regular gypsum wallboard, without sacrificing product integrity and performance
- Sag-Resistant wallboard for use on interior walls and ceilings
- May be used on ceilings with framing spacing up to 24" o.c. with a water-based texture application, and on walls with framing spaced up to 24" o.c.
- 100% recycled paper
- Reduced labor; easier to install, carry, and lift

Light on Weight - Heavy on Quality!

PABCO LITECORE™

Dual-Use Lightweight Gypsum Wallboard

for WALLS & CEILINGS



Another new product in the long-line of PABCO's Quality to the Core® products - Quality at Work
www.pabco gypsum.com • 866.282.9298

quality to the core®

 Green Home
Product Partner

STOP NOISE FROM SMASHING THROUGH



GET QUIET. GET THE LOW COST SOUND ATTENUATION SOLUTION.

QuietRock® sound damping gypsum panel by PABCO® Gypsum is the most cost-effective way to reduce noise in your project.

- Hangs and finishes similar to gypsum panels
- Lab tested – superior to other sound attenuation methods
- Can save time, labor, and valuable floor space
- UL Classified.* Type X fire-rated*

For help with your project, call 800.797.8159 or visit www.QuietRock.com

**Many products. See website for details.*

QuietRock®
by PABCO® Gypsum



QuietRock® ES

POWERED BY **EZ-SNAP**



Type X, 5/8" sound damping gypsum panel without paper or metal in the core. Cuts and installs similar to regular gypsum panel products. QuietRock® ES is the professional's choice for acoustic walls in residential and commercial applications.

Product Specifications:

- Thickness:** 5/8" (15.9mm), tapered edges
- Width:** 4' (1220mm)
- Lengths:** 8' (2438mm), 9' (2743mm), 10' (3048mm)
- Weight:** 2.6 lbs/sqft
- Fire-rated:** 1 hour, Type X (ASTM E119)
- Flame spread:** Class A (ASTM E84)
- ASTM Standards:** C473, E84, E90, E119

UL Assembly:  

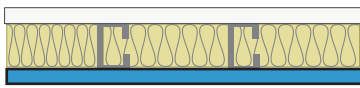
Approved for use in many one and two hour fire-rated assemblies including U309, U340, U341, U376, U386, U425, U465, V419, V463, V464, W313, W317, W459, and W460. Go to www.QuietRock.com for additional information on fire-rated assemblies.

QuietRock® ES can be incorporated in several one and two-hour fire-rated UL designs. However, it is not intended as a direct substitute for a UL Classified Gypsum Board in all fire assemblies. Refer to the specific UL designs above for assemblies tested.

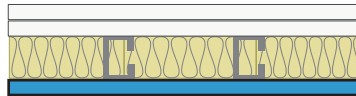
Common Wall Assemblies:

Light Gauge Steel Stud Walls

Single 3 5/8" Steel Stud Wall, 24" OC - **STC 55** Single 3 5/8" Steel Stud Wall, 24" OC - **STC 60**



QuietRock® on one side,
Type X on the other

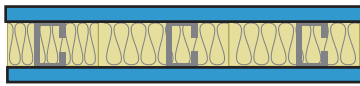


QuietRock® on one side,
2 layers 5/8" Type X on the other

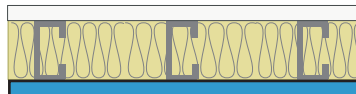
Visit www.QuietRock.com for additional assembly and technical information

Heavy Gauge Steel Stud Walls

3-5/8" Single Steel Stud Wall, 16" OC - **STC 48** 6" Single Steel Stud Wall, 16" OC - **STC 49** 6" Single Steel Stud Wall, 16" OC - **STC 53**



QuietRock® on both sides



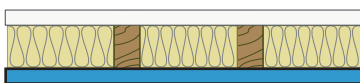
QuietRock® on one side,
Type X on the other



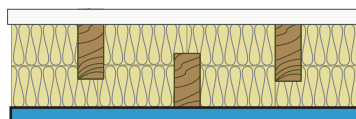
QuietRock® on both sides

Wood Stud Walls

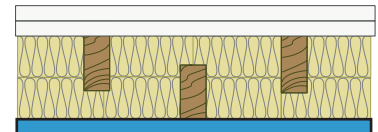
Single 2x4 wood studs, 24" OC - **STC 51** Staggered 2x4 wood studs, 8" OC - **STC 55** Staggered 2x4 wood studs, 8" OC - **STC 60**



QuietRock® on one side,
Type X on the other



QuietRock® on one side
5/8" Type X on the other



QuietRock® on one side
2 layers 5/8" Type X on the other

The information contained in this document is for general purposes only. Features and specifications are subject to change. The diagrams and stated STC ratings are intended to serve as a guide. Construction practices have an influence on final STC ratings. PABCO® Gypsum cannot guarantee actual STC ratings. Flanking sound patterns, the integrity of the wall, and construction methods factor in effective sound control. Exposure to excessive or continuous moisture and extreme temperatures of 125°F (52°C) or more should be avoided. QuietRock® should be stored flat in a dry area, under cover, on supported risers to prevent damage to product. Proper care should be taken while transporting, storing, applying and maintaining QuietRock.



PABCO® Gypsum | 37851 Cherry Street, Newark, CA 94560 | 1.800.797.8159 | www.PabcoGypsum.com | www.QuietRock.com | PN: 101-00045-091013
 © 2013 PABCO® Gypsum. All rights reserved. PABCO® Gypsum, the PABCO® logo, EZ-SNAP™, Quiet®, QuietRock®, QuietPutty®, QuietSeal® Pro, QuietSeam®, QuietGlue® Pro, and QuietCoat® are trademarks or registered trademarks of Pacific Coast Building Products, Inc. and licensed to PABCO® Gypsum in the United States and other countries. Information subject to change without notice. QuietRock ES is covered by patent U.S. number 7,799,410 and 7,908,818.