

Saunders Lakeland

MOUNTAIN MARATHON

RESULTS

10th



PLEASE KEEP THE COUNTRYSIDE TIDY

**A FAREWELL MESSAGE FROM KEN LEDWARD
SLMM ORGANISER SINCE 1979**

"At last we have a replacement organiser", That by the way is my refrain and not yours!

In the years I've been getting my act together I've made many friends among competitors and officials and I'm much better for it. Thank you all.

Those of you 'regulars' will have seen who the workers are, now I'll give them names. The man who has always worked hard to interpret your entry forms is Jim Garnett. Ron Kenyon, almost always assisted by his wife Chris has manned the mid-camp finish and completed all timings and registration work. Tom Pape has put together a team of checkpoint officials from the Back Packers Club. Len Ashcroft has prepared the mid-camps and cleaned up afterwards, often in terrible weather. Liz Ledward and Marg Jones have concocted a "pie and pea supper" which nearly became as popular as the event itself.

These people and many more have been the back-bone of the event – what use is any general without an army? Over the years there have been many others who have

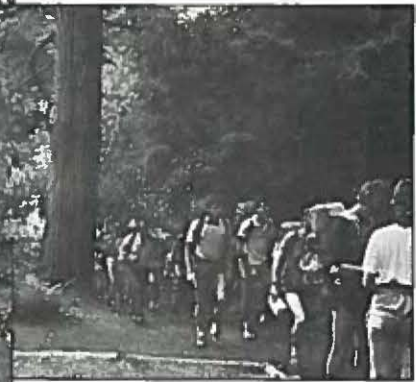
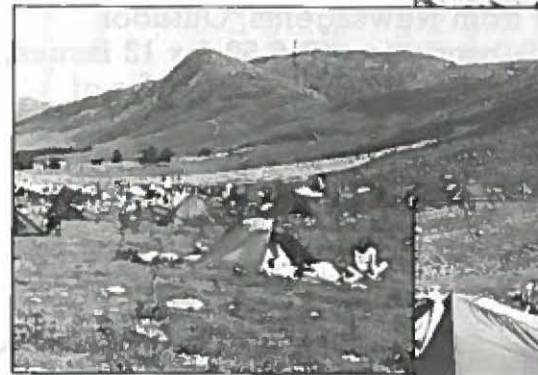
given us their assistance unstintingly.

To the farmers, estate workers, Park Rangers, Foresters – the list is unending, our thanks. These good folk will help us again; why? because this event and its competitors always try to compete within the bounds of sensible behaviour. In all the years, we have recorded only two complaints about our activities.

My good wishes to you all for many enjoyable days in the mountains. And good luck to our new event organiser Keith Fazey – I know one part of the Lakes he loves very dearly – do you?

And now I set out on a plot to partner Les Ashcroft in the 1988 SLMM Backpackers Class. See you then.

KEN LEDWARD.





Official Magazine of the British Mountaineering Council

FIRST CHOICE FOR MOUNTAINEERING, HILLWALKING AND ROCK CLIMBING ENTHUSIASTS.

High Magazine is available from Newsagents, Outdoor Equipment Shops, and on Subscription (£16.50 for 12 issues, UK). As a subscriber you can also get all the benefits of BMC membership at no extra cost.

Write with payment to High Magazine Ltd., Springfield House, The Parade, Oadby, Leicester LE2 5BF, or simply call (0533) 716111 (24 hour service) quoting your ACCESS or VISA card number.

High

magazine

...leading with...



KLETS SOLO CLASS

C.P./Card punched correctly. X Lady O/N/Overnight pitch. TNR/Time not recorded. R/Retired.

Posn.	NAME	Start Time	Day 1 Total	Day 2 Total	Total Time	Day 1 Checkpoints					Day 2 Checkpoints							
						4	13	15	18	14	12	Main M/Camp	19	17	8	7	2	
1.	M. McDermot	11.02	6.04	3.29	9.33	11.51	14.38	13.25	14.09	16.13	16.44	O/N	17.06	07.33	07.40	08.35	09.20	10.09
2.	A. Bell	10.38	6.23	3.47	10.10	11.24	14.36	13.15	14.00	16.16	16.51	O/N	17.01	07.43	07.55	08.49	09.40	10.28
3.	A. Belton	10.05	6.47	3.22	10.12	10.52	11.56	13.14	14.02	15.54	16.29	O/N	16.52	07.44	07.56	08.49	09.40	10.28
4.	M. Garrett	10.12	6.48	4.11	10.59	11.01	12.08	13.19	14.09	15.53	16.35	O/N	17.00	08.25	08.37	09.41	10.44	11.37
5.	S. Bradshaw	10.33	7.28	4.09	11.37	11.36	14.49	13.18	14.08	16.51	17.28	O/N	18.01	07.09	07.16	08.25	09.18	10.56
																		Day 1
6.	L. Pratt	09.50	7.09	4.33	11.42	10.41	13.54	12.20	13.10	15.57	16.35	O/N	16.59	08.11	08.23	09.24	10.37	11.31
7.	A. Evans	10.50	7.23	4.41	12.04	11.34	15.00	13.25	14.17	17.06	17.41	O/N	18.13	07.09	07.20	08.33	09.37	10.38
8.	J. Crummett	09.36	7.47	4.55	12.42	10.40	14.19	12.42	13.37	16.16	16.52	O/N	17.23	07.47	08.04	09.11	10.17	11.16
9.	J. Constantine	10.10	8.03	4.47	12.50	11.04	14.50	13.12	14.08	16.53	17.40	O/N	18.13	07.51	08.05	09.11	10.14	11.28
10.	M. Hartley	09.35	7.58	4.57	12.55	10.26	13.11	12.24	14.01	16.26	17.03	O/N	17.33	06.55	07.05	08.25	09.29	10.32
11.	M. Hawkins	09.30	8.26	5.18	13.44	10.43	11.54	13.32	14.34	16.26	17.23	O/N	17.56	07.58	08.15	09.30	10.40	12.01
12.	J. Simpson	09.30	8.57	4.57	13.54	10.26	13.36	12.41	14.43	17.01	17.52	O/N	18.27	06.55	07.05	08.25	09.29	10.30
13.	T. Norris	09.30	8.28	5.50	14.18	10.28	12.05	12.56	14.07	16.08	17.03	O/N	17.58	07.25	07.40	09.02	10.15	11.37
14.	P. Sydney	09.54	8.30	6.04	14.34	10.53	15.21	13.12	14.27	17.34	O/N	18.24	07.04	08.43	08.59	10.15	11.31	TNR
15.	J. Faulkner	10.55	9.01	5.53	14.54	11.58	13.30	15.23	16.24	18.35	19.21	O/N	19.56	08.02	08.22	09.29	10.57	12.17
16.	P. Frechett	09.40	10.11	6.47	16.58	11.06	14.26	13.25	15.32	18.31	19.21	O/N	19.51	08.06	08.25	09.55	11.27	10.11
																		Day 1
X 17.	J. Sutcliffe	09.42	11.00	7.23	18.23	10.58	C/P	13.28	15.48	18.43	19.47	O/N	20.42	08.18	08.40	10.27	12.10	TNR
	D. Thomas					10.40			12.46									

BOWFELL CLASS

C.P/Card Punched Correctly TNR/Time Not Recorded

CNP/Card Not Punched VP/Visit Proven

⌘ Mixed Team ‡ Ladies Team R/Retired.

Day 1 Checkpoints

Day 2 Checkpoints

Posn.	NAMES	Day 1 Total	Day 2 Total	Total Time	Day 1 Checkpoints				Day 2 Checkpoints				
					7	17	21	22	19	20	18	4	1
1.	M. Sellens/G. Sellens	4.42	4.21	9.03	11.34	12.44	13.22	13.42	14.17	08.03	09.03	10.56	11.38
2.	G. Poole/B. Deegan	4.49	4.24	9.13	11.34	12.45	13.33	14.04	13.08	08.04	09.04	10.53	11.40
3.	D. Nuttall/J. Nuttall	4.47	4.32	9.19	11.47	12.55	13.34	13.56	14.23	08.04	09.04	10.54	11.45
4.	S. Bondi/P. Newman	4.58	4.28	9.26	11.10	12.23	13.27	13.46	12.53	08.03	09.05	10.54	11.44
5.	N. Aston/G. Wallis	4.52	4.39	9.31	11.20	12.30	13.31	14.00		08.00	09.01	11.06	11.54
6.	A. Addis/J. Amies	5.08	4.47	9.55	11.25	12.42	13.42	14.02	13.12	08.03	09.01	11.09	12.05
⌘ 7.	S. Wright/E. Wright	5.08	4.48	9.56	11.20	12.48	13.32	13.49	14.23	08.04	09.06	11.02	12.04
8.	A. Howarth/A. Morris	5.07	4.56	10.03	11.49	13.12	13.49	14.08	14.26	08.04	09.07	11.22	12.14
9.	R. Newport/P. Green	5.17	4.54	10.11	11.05	12.28	13.11	13.31	14.06	08.04	09.22	11.22	12.08
10.	D. Gibson/D. Nolan	5.12	5.01	10.13	11.29	12.43	13.27	13.46	14.22	08.05	09.18	11.25	12.18
11.	J. King/J. Hewitt	5.19	5.02	10.21	11.07	12.27	13.19	13.42	14.21	08.17	09.23	11.24	12.17
12.	M. Miller/M. Fairlands	5.22	5.03	10.25	11.27	12.48	13.28	13.55	14.29	08.03	09.08	11.16	12.13
13.	C. Rhodes/D. Brown	5.36	4.51	10.27	11.08	12.30	13.49	14.06	13.04	08.02	09.05	C/P	12.07
14.	P. Alker/A. Warcie	5.33	4.57	10.30	11.41	13.10	14.03	14.26	15.02	08.20	09.34	11.27	12.14
15.	T. Winterton/J. Meeks	5.31	5.08	10.39	11.08	12.46	13.28	13.47	14.22	08.04	09.19	11.28	12.19
16.	R. Waterhouse/D. Powell	5.25	5.18	10.43	11.32	12.46	13.37	14.02	14.36	08.14	09.17	11.33	12.37
17.	A. Gillard/S. Corry	5.43	5.00	10.43	11.35	13.10	14.06	14.26	15.02	08.02	09.03	11.18	12.15
18.	J. Yarnell/G. Drew	5.57	4.46	10.43	10.58	14.55	14.08	13.50	13.24	08.00	09.05	11.17	12.04
19.	J. Brockbank/C. Sandham	5.29	5.18	10.47	11.39	13.18	13.59	14.18	14.50	08.04	09.18	11.26	12.27
20.	J. Coulthard/A. Coulthard	5.21	5.26	10.47	11.20	12.49	13.29	13.47	14.27	08.04	09.19	11.33	12.37
21.	S. Parr/M. Berisford	5.03	5.45	10.48	11.36	12.58	13.54	14.13	13.24	08.05	09.12	11.51	12.53
22.	M. Boyes/N. Haycock	5.34	5.19	10.53	11.45	13.18	14.00	14.21	15.03	08.04	09.19	11.39	12.38
⌘ 23.	C. Fulton/R. Defaye	5.55	5.02	10.57	11.11	12.41	13.30	13.56	C/P	08.04	09.19	11.25	12.16
24.	C. Lincoln-Jones/ R. Lungmuss	5.20	5.37	10.57	11.14	12.39	13.24	13.42	C/P	08.05	09.16	11.39	12.50
25.	K. Lomas/R. Salt	5.22	5.40	11.02	11.33	12.46	13.41	14.17	14.53	08.07	09.18	11.37	12.52
26.	D. Shore/G. Orchard	5.40	5.23	11.03	11.26	13.00	13.41	14.06	14.40	08.04	09.19	11.31	12.37
27.	J. Foden/M. Holland	5.49	5.19	11.08	11.47	13.21	14.14	14.37	C/P	08.05	09.18	11.40	12.36
28.	M. Wallis/R. Wallis	5.51	5.18	11.09	11.35	15.30	14.25	14.10	15.05	08.03	09.07	11.34	12.35
29.	A. Wrench/B. Schofield	6.14	4.55	11.09	11.43	13.12	14.00	14.32	15.06	08.04	09.13	11.15	12.12
30.	A. Coatsworth/P. Sharples	5.35	5.41	11.16	11.24	12.45	13.38	14.02	14.41	08.03	09.18	11.40	12.48
31.	I. Husband/N. Barnes	5.34	5.45	11.19	11.24	12.56	13.43	14.05	14.45	08.04	09.21	11.45	12.52
32.	S. Bennett/S. Banks	5.31	5.51	11.22	10.57	12.15	13.32	13.58	12.50	08.04	09.21	12.05	13.04
33.	B. Johnson/G. Edmondson	6.22	5.01	11.23	11.37	13.05	14.39	14.08	13.38	08.06	09.18	11.25	12.15
34.	H. Thomas/M. Mair	5.43	5.45	11.28	11.45	13.14	14.10	14.34	15.08	08.04	09.20	11.47	12.55
35.	D. Lobley/N. Tetley	5.52	5.37	11.29	11.43	13.15	14.28	14.51	13.52	08.03	09.15	11.43	12.52
36.	D. Hutchinson/D. O'Neill	6.14	5.22	11.36	11.40	13.25	14.28	14.52	15.29	08.06	09.19	11.34	12.37
37.	P. Issitt/D. Unwin	6.02	5.40	11.42	11.08	12.57	13.46	14.09	14.47	08.05	09.19	11.44	12.48
38.	A. Gilhodey/E. Gilhodey	5.54	5.49	11.43	11.20	12.54	13.44	14.09	14.46	08.08	09.33	11.59	12.55
39.	R. Stennett/C. Roberts	5.50	5.56	11.46	11.21	12.50	13.40	14.04	14.44	08.08	09.26	12.01	13.06
40.	P. Barratt/K. Skidmore	6.07	5.40	11.47	11.10	12.56	13.45	14.08	14.46	08.06	09.18	11.35	12.47
41.	B. Smith/J. Askew	6.10	5.38	11.48	11.12	12.48	13.45	14.18	14.56	08.07	09.18	11.44	12.50
42.	G. Mason/G. Murray	6.09	5.39	11.48	11.47	13.23	14.18	14.42	15.21	08.11	09.24	11.48	C/P
⌘ 43.	D. Sant/M. Sant	6.36	5.15	11.51	11.22	13.08	14.44	15.04	15.41	08.06	09.20	11.30	12.29
⌘ 44.	G. Barnes/J. Simpson	5.55	5.56	11.51	11.37	13.07	14.00	14.26	15.09	08.08	09.31	12.04	13.05
45.	A. Hoyland/K. Lowry	5.59	5.54	11.53	11.30	13.00	13.53	14.17	14.58	08.07	09.39	12.01	13.08
46.	G. Allen/M. Hillman	6.21	5.40	12.01	11.08	12.43	13.35	14.08	14.47	08.06	09.20	11.45	12.48
47.	S. Hardy/R. Piron	6.25	5.38	12.03	11.50	13.30	14.23	14.54	15.29	08.07	09.23	11.44	12.47
48.	R. Moseley/D. Perks	6.37	5.27	12.04	11.44	13.40	14.33	15.07	15.51	08.05	09.20	11.35	12.37
49.	K. Peart/I. Collins	5.56	6.11	12.07	11.19	12.47	13.36	14.04	14.44	08.05	09.25	12.09	13.20

10

11

BOWFELL CLASS

Day 1 Checkpoints

Day 2 Checkpoints

Posn.	NAMES	Day 1 Total	Day 2 Total	Total Time	Day 1 Checkpoints				Day 2 Checkpoints				
					7	17	21	22	19	20	18	4	1
50.	J. Wilkinson/T. Wilkinson	6.14	5.54	12.08	11.19	13.10	13.56	14.21	15.01	08.05	09.22	11.52	13.04
51.	R. Morgan/I. Homer	6.12	5.56	12.08	11.14	12.55	13.46	14.15	14.58	08.09	09.31	12.04	13.08
52.	T. Thackeray/P. Sharples	6.16	5.52	12.08	11.21	12.56	13.50	14.13	14.56	08.07	09.27	12.02	13.07
53.	P. Longdon/P. Sixsmith	5.59	6.11	12.10	11.30	13.02	13.53	14.27	15.07	08.09	09.32	12.12	13.21
✕ 54.	I. Blunk/M. Cudahy	6.52	5.19	12.11	11.46	15.55	14.47	14.24	15.35	08.04	09.24	11.40	12.35
55.	R. Knapp/ G. Crawford-Smith	6.12	6.01	12.13	11.49	13.44	14.28	14.53	15.28	08.12	09.35	12.11	13.13
56.	R. Mogridge/S. Kneath	6.47	5.31	12.18	11.23	12.54	13.44	14.07	15.44	08.04	09.22	11.39	12.45
57.	M. Parish/A. Mackensie	6.46	5.33	12.19	11.09	13.08	14.29	14.56	13.49	08.04	09.20	11.43	12.45
58.	S. Bonnett/P. Dalligan	6.43	5.40	12.23	11.15	C/P	14.16	14.37	15.22	08.06	09.18	11.35	12.47
59.	I. Strang/I. Gilbert	5.59	6.29	12.28	10.57	12.25	13.22	13.43	14.27	08.03	09.23	12.30	C/P
60.	G. Horsley/W. Eldridge	6.34	5.57	12.31	12.09	13.50	15.29	15.05	14.27	08.08	09.29	12.00	13.04
61.	K. Ward/T. Crowther	6.27	6.06	12.33	11.42	13.26	14.28	14.54	15.27	08.06	09.20	12.10	13.16
62.	J. Urwin/B. Corringham	6.38	5.55	12.33	C/P	13.35	14.44	15.12	15.47	08.06	09.22	11.50	13.07
63.	W. Ramm/C. Fletcher	6.38	5.56	12.34	11.36	13.30	14.28	14.53	15.29	08.05	09.43	12.13	13.11
64.	G. Halliwell/R. Bentley	6.08	6.27	12.35	11.35	13.09	13.58	14.31	15.16	08.08	09.28	12.24	13.38
65.	D. Annandale/J. Bryan	6.36	6.00	12.36	11.19	12.56	13.49	14.29	15.09	08.07	09.32	12.06	13.10
66.	C. Elgenia/D. Cliff	6.36	6.02	12.38	11.51	13.42	14.58	15.33	16.11	08.07	09.22	11.50	13.10
67.	L. Bennett/M. Love	7.13	5.27	12.40	11.49	13.35	14.45	15.09	15.47	08.07	09.19	11.36	12.38
68.	J. Delara/S. Bell	6.04	6.36	12.40	11.24	13.00	13.44	14.09	14.46	08.05	09.24	12.29	13.45
69.	G. Royle/P. Howarth	6.33	6.07	12.40	12.05	13.40	14.29	14.54	15.27	08.05	09.21	12.04	13.05
70.	R. Marsden/M. Bloomfield	6.24	6.18	12.42	11.12	13.02	14.00	14.26	13.05	08.07	09.34	12.20	13.28
71.	D. Monteith/J. Williams	6.29	6.23	12.52	11.18	12.58	13.57	14.26	15.04	08.08	09.41	12.29	13.35
72.	A. McGuinness/J. Fletcher	6.50	6.07	12.57	11.26	13.30	14.37	15.05	15.43	08.07	09.26	11.56	13.08
73.	A. Sallabank/P. Finn	5.51	7.07	12.58	11.13	12.46	13.41	14.40		08.05	09.45	12.50	C/P
✕ 74.	A. Crabb/R. Pickvance	5.56	7.03	12.59	11.35	13.18	14.07	C/P	15.09	08.11	09.48	12.52	C/P
75.	K. Andrews/A. Coatsworth	6.27	6.33	13.00	11.18	13.11	14.06	14.28	15.06	08.11	09.36	12.28	13.45
76.	C. Constable/D. Land	6.27	6.35	13.02	11.17	13.01	13.57	14.28	15.13	08.08	09.37	12.34	13.44
77.	O. Henriksen/J. Lambert	7.06	6.01	13.07	11.30	13.25	14.29	15.07	15.51	08.06	09.19	12.04	13.15
78.	R. Ayland/N. Worsley	6.35	6.33	13.08	11.43	13.26	14.29	14.54	15.37	08.11	09.43	12.32	13.41
79.	C. Lane/D. Fairclough	7.01	6.08	13.09	12.02	13.55	15.00	15.23	16.05	08.04	09.23	12.00	13.18
✕ 80.	W. Holmes/N. Holmes	7.02	6.09	13.11	12.06	14.00	14.57	15.24	14.02	08.10	09.31	12.08	13.16
81.	A. Denham/H. Ball	6.36	6.36	13.12	11.29	13.13	14.05	14.31	15.09	08.11	09.26	12.20	13.38
82.													
83.	H. Marsden/P. Haigh	6.52	6.23	13.15	11.22	13.06	14.07	14.35	15.19	08.10	09.38	12.30	13.30
84.	M. Boyes/P. Calladine	6.36	6.39	13.15	11.35	13.19	14.48	15.18	TNRCNP	08.18	09.45	12.38	13.46
85.	R. Houghton/A. Richardson	6.51	6.29	13.20	11.40	13.42	15.36	16.06	14.39	08.10	09.24	12.15	13.37
✕ 86.	G. Webster/S. Watson	6.56	6.24	13.20	11.49	13.35	14.32	15.07	15.44	08.11	09.48	12.17	13.37
87.	C. Morone/D. Nield	6.51	6.33	13.24	11.44	13.40	14.35	15.07	15.58	08.08	09.23	12.20	13.41
88.	G. Richmond/M. Emery	6.49	6.37	13.26	11.08	13.10	14.05	14.33	15.13	08.09	09.41	12.32	13.44
✕ 89.	M. Hughes/H. Teece	7.04	6.23	13.27	11.29	13.27	15.03	14.42	14.08	08.10	09.45	12.28	13.36
90.	W. Burgess/M. Swales	7.34	6.00	13.34	12.02	14.27	15.35	16.09	16.51	08.08	09.31	12.05	13.10
91.	M. Maddock/S. Maddock	6.40	6.54	13.34	11.51	13.30	14.25	14.51	15.31	08.08	09.49	12.46	C/P
92.	J. Bickerstaffe/R. Brooke	7.02	6.42	13.44	11.30	13.24	14.21	14.46	15.40	08.19	09.51	12.32	13.50
93.	R. Robinson/M. Docherty	7.21	6.24	13.45	12.02	14.05	15.22	15.50	16.40	08.10	09.38	12.29	13.33
94.	T. Ralph/D. Gibson	6.56	6.54	13.50	11.49	13.35	14.31	15.07	15.46	08.21	09.49	12.52	TNRCNP
95.	R. Bartlett/A. Fisher	7.25	6.28	13.53	12.30	14.35	15.29	15.51	16.40	08.09	09.39	12.15	13.38
96.	P. Dinnage/J. Swinden	7.17	6.41	13.58	11.19	13.20	14.47	15.09	15.45	08.09	09.44	12.38	13.48
97.	T. Hines/A. Bradbury	7.23	6.36	13.59	11.35	13.19	14.48	15.19	16.10	08.11	09.40	12.30	13.45
98.	V. Lalley/J. Lalley	7.43	6.29	14.12	11.23	13.12	14.55	15.24	13.59	08.10	09.40	12.29	13.37
✕ 99.	H. Peace/N. Peace	7.39	6.37	14.16	11.31	13.30	14.49	15.15	16.07	08.19	09.52	12.29	13.37
✕ 100.	M. Kelly/A. Kelly	7.39	6.37	14.16	12.07	14.02	15.02	15.34	16.18	08.12	09.50	12.36	13.45
101.	P. Thomas/P. Bailey	7.12	7.07	14.19	11.52	13.54	15.02	15.28	16.12	08.13	09.48	12.56	V/P
102.	D. Coustick/D. Hinsley	7.48	6.32	14.20	11.58	16.33	15.28	14.59	14.26	08.23	10.18	TNRCNP	TNRCNP
103.	R. Swale/J. McLoughlin	7.07	7.15	14.22	12.08	14.101	15.07	15.35	16.17	08.08	09.36	12.54	V/P
104.	P. Allen/J. Quine	7.24	7.04	14.28	11.39	13.30	14.36	15.04	15.54	08.10	09.53	12.48	V/P
105.	C. Wicks/R. Dixon	7.14	7.15	14.29	11.56	13.55	14.59	15.25	16.15	08.11	09.39	12.57	V/P
106.	B. Williams/P. Anderson	7.46	6.43	14.29	11.43	13.41	15.20	15.52	14.31	08.11	09.43	12.41	13.47

12

13

BOWFELL CLASS

Day 1 Checkpoints

Day 2 Checkpoints

Posn. NAMES	Day 1 Total	Day 2 Total	Total Time	Day 1 Checkpoints				Day 2 Checkpoints				
				7	17	21	22	19	20	18	4	1
107. A. Barnes/W. Beetham	7.25	7.04	14.29	11.41	13.32	15.05	15.35	14.19	08.10	09.46	12.36	V/P
108. M. Arundale/A. Fisher	8.00	6.30	14.30	C/P	14.10	15.29	16.06	16.58	08.07	09.44	12.29	13.38
109. G. Thompson/D. Thompson	8.11	6.24	14.35	12.04	14.10	15.30	15.55	16.46	08.12	09.41	12.33	13.35
110. M. Cartwright/N. Polmear	7.40	7.03	14.43	11.45	13.42	14.54	15.24	16.17	08.09	09.40	12.46	V/P
111. M. Rose/D. Beard	7.13	7.51	15.04	11.31	13.50	14.43	15.08	15.48	08.27	10.28	13.48	14.55
112. J. Mearns/J. Nicholson	7.17	7.51	15.08	11.57	13.53	15.01	15.34	16.19	08.17	09.58	13.42	14.55
113. S. Lawrence/T. Fidler	8.12	7.02	15.14	11.51	13.45	15.01	15.53	16.59	08.18	09.45	12.39	V/P
*114 A. Wilson/R. Wilson	8.17	7.16	15.33	11.47	14.00	15.10	15.49	16.39	08.21	10.17	V/P	V/P
115.N. Woodhall/K. Boon	9.44	6.25	16.09	11.32	14.54	16.54	16.25	17.58	08.08	09.36	C/P	13.33
116. D. Collins/D. Stephenson	7.45	8.30	16.15	11.32	13.45	15.08	15.36	16.19	08.18	09.46	TNR CNP	TNR CNP
*117 J. Robertson/H. Stone	8.51	7.30	16.21	12.05	14.30	15.44	16.29	17.21	08.12	09.59	TNR CNP	TNR CNP
119. M. Hogg/A. Arkley	9.03	10.02	19.05	12.40	14.46	16.16	17.03	18.09	08.31	10.55	V/P	V/P
*120 G. Skerritt/G. Ollerhead	10.14	9.10	19.24	11.49	14.41	16.48	17.30	15.35	08.21	10.18	14.00	16.00
121. M. Iddon/J. Tootle	9.45	10.14	19.59	12.08	14.25	15.45	16.25	17.35	08.33	10.54	TNR CNP	V/P

Retired

J. Smith/D. Tebbutt	11.58	12.14	14.41	17.28	19.05	16.12	08.27	10.32R				
R. Blanks/C. Smalley		12.01	13.40	14.36	15.03	15.40	08.06	09.39	TNR	TNR		
M. Crockett/J. Wilkinson	7.33	11.41	13.59	15.02	15.32	16.13	08.18	10.20R				
D. Wetherill/G. Woods	4.38	11.04	12.20	13.09	13.30	12.43	08.00	09.02R				
G. Ashman/R. Ashman	9.41	12.06	14.30	15.45	16.26	18.08	08.23	10.30R				
D. Butler/B. Bridgestock	8.13	12.09	14.35	15.47	16.15	17.06	08.08	09.42R				
B. Gamblin/G. Waterson	5.50	11.59	13.19	14.14	14.34	15.13	08.23	10.36R				
M. Fairmaner/R. Luxmore	8.18	12.04	14.15	15.34	16.08	17.04	08.23	10.28R				
A. Fox/B. Young	9.29	12.45	15.50	17.55	18.40	16.40	08.17	09.58R				
D. Harmer/A. Townsend	9.16	12.25	15.15	16.35	17.10	18.10	08.19	10.01R				

* R. Candleland/T. Candleland	11.09	12.47	15.48	17.09	17.53	19.16R						
C. Fielding/S. Boler	7.45	11.23	13.29	14.34	15.05	15.49	08.13	10.01R				
R. Curtis/D. Robinson	6.52	11.59	13.52	14.48	15.15	16.07	08.22R					
E. Geldard/G. Craven	10.03	11.39	14.05	16.38	17.21	15.11	08.44R					
R. Cottle/G. Perratt		11.10	TNR CNP	TNR CNP	TNR CNP	TNR CNP						

Retired During Day 1

G. Elliott/D. Peter				13.50		14.44R						
T. Mackey/M. Poulter			11.30									
P. Sutherland/P. Carmichael			11.35			15.15R						
J. Harding/V. Wabley			12.12R									
† R. Chappel/J. Hostford			11.11	13.07	14.27R							
* P. Hannaford/C. McIntosh			11.30	13.22R								
M. Farnworth/T. Brown			12.57	15.12	16.21	17.02	18.04	08.26R				
P. Yates/B. Lemax			13.38	16.52	19.29			10.05R				
* J. Hood/P. Hood			12.38	15.10	16.26	17.09	18.00	08.28	10.38R			

14

15

SEND FOR OUR 124 PAGE FREE CATALOGUE
— COUPON ON EARLIER PAGE

INDIAN KANGCHENJUNGA 1988

CHOOSES COTSWOLD

To equip its Himalayan Expedition

— BECAUSE we are reliable

— BECAUSE we have the best prices

— BECAUSE we have the best selection

— BECAUSE we have the expertise

— BECAUSE we care more

YOU TOO CAN RELY ON US

COTSWOLD
— we care more

LONDON 42/44 Uxbridge Road, Shepherds Bush W12 8ND
TEL: (01) 743 2978 FAX No. (01) 740 1480
READING 213 London Road, Reading TEL: (0734) 64491
SOUTH CERNEY (Head Office, Mail Order and Retail Shop)
Brookway Lane, South Cerney, Cirencester, Glos. GL7 5UD
TEL: (0225) 860012/13/14 (Answered) FAX No. (0225) 860043

BRITISH ARMY

CHOOSES COTSWOLD

For £1/2 million Adventurous Training
Contract including: Tents - Rucksacks - Climbing Equipment etc. etc.

New from Saunders

The world leader in tent technology is launching into whole new areas. With a range of jackets, shell clothing and sleeping bags which blend his wealth of design experience with the very latest hi-tech materials.

JACKETS Keeping warm never allowed such freedom. Luxurious new synthetic fillings in designs to meet various weather conditions.

SHELL CLOTHING Very lightweight, very compressible.

SLEEPING BAGS Superb bags to suit any outdoor experience, including one specially designed for mountain marathons.



SAUNDERS HIGH TEC LIGHTWEIGHT SLEEPING BAGS



MAKE TRACKS FOR BLACKS!

FOR A FANTASTIC SELECTION OF CAMPING GEAR, AND THE LATEST IN SPORTS AND LEISURE WEAR.



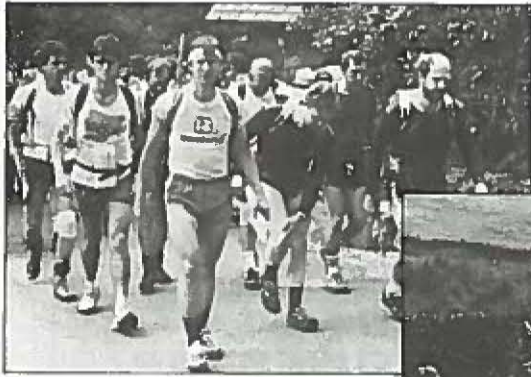
Blacks superstores are packed with an exciting range of leisure wear, sports wear and camping equipment you will find all the top names in the leisure and sports fields and their knowledge of the needs for all camping and outdoor pursuits is backed with a hundred years of experience.

INTEREST FREE CREDIT ON MANY ITEMS!
Ask for details at P.053 P.11

ALDERSHOT · BIRMINGHAM · BISHOP STORTFORD · BRISTOL · CAMBRIDGE · CARDIFF · CATFORD · CHELTENHAM · CHESTER · DERBY · DUNDEE · EDINBURGH · EXETER · FAREHAM · GLASGOW · HANLEY · HULL · IPSWICH · LEEDS · LEICESTER · LIVERPOOL · MANCHESTER · NEWCASTLE · NORTHAMPTON · NORWICH · NOTTINGHAM · ORPINGTON · PETERBOROUGH · PLYMOUTH · PORTSMOUTH · READING · SHEFFIELD · SOLIHULL · WOLVERHAMPTON · YORK · LONDON · HOLBORN AND RATHBONE PLACE ·

BLACKS
for the great outdoors

SLMM 87



WANSFELL FELLRUNNERS

C.P/Card Punched Correctly TNR/Time Not Recorded

CNP/Card Not Punched VP/Visit Proven

✕ Mixed Team ‡ Ladies Team R/Retired.

20

Posn.	NAMES	Day 1 Total	Day 2 Total	Total Time	Day 1 Checkpoints			Day 2 Checkpoints	
					9	14	20	6	2
1.	S. Pattinson/A. Wanless	3.28	2.55	6.23	11.17	12.14	12.42	09.49	10.36
2.	M. Burstan/N. Gard	3.46	2.51	6.37	11.55	12.47	13.13	09.47	10.32
3.	D. Hurst/M. Harrison	3.44	2.56	6.40	11.18	12.05	12.33	09.49	10.40
4.	P. Hawthorn/D. Bendell	3.56	2.54	6.50	12.03	13.00	13.28	09.56	10.39
5.	C. Graham/I. Rogerson	4.02	3.02	7.04	11.50	12.44	13.13	09.53	10.45
6.	R. Smith/R. Caulfield	3.49	3.15	7.04	11.18	12.07	12.43	10.05	10.59
7.	M. Sadula/G. Butcher	3.59	3.06	7.05	11.32	12.42	13.13	09.53	10.41
8.	P. Thompson/J. Pickering	4.00	3.07	7.07	12.10	13.04	13.32	10.05	10.52
9.	P. Jarvis/A. Bradley	3.43	3.24	7.07	11.56	12.55	13.22	10.15	11.09
10.	I. Opelt/C. Harwood	3.49	3.28	7.17	11.35	12.27	12.59	10.02	11.02
11.	V. Radvils/D. Gilkes	4.08	3.27	7.35	11.29	12.27	12.59	10.05	11.00
✕ 12.	R. Panter/J. Beardwell	4.12	3.24	7.36	11.55	12.46	13.13	10.15	11.08
13.	B. Beedham/P. Hunt	3.54	3.42	7.36	12.11	13.09	13.39	10.22	11.23
14.	K. Foster/P. Whitmore	4.11	3.31	7.42	12.14	13.13	13.40	10.16	11.15
15.	P. Radforth/G. Durkan	4.31	3.25	7.56	11.52	13.02	13.37	10.05	11.04
✕ 16.	P. Dawson/J. Dyer	4.16	3.43	7.59	11.29	12.31	13.04	10.22	11.22
17.	P. Lumley/P. Treasure	4.16	3.46	8.02	11.40	12.42	13.17	10.27	11.28
18.	D. Walker/C. Carr	4.30	3.32	8.02	12.01	13.06	13.40	10.15	11.14
19.	P. Martin/R. Shiels	4.46	3.17	8.03	11.57	12.48	13.25	10.05	10.59
20.	D. Grubb/I. Raggett	4.29	3.36	8.05	11.53	12.54	13.29	10.18	11.17
21.	I. Roberts/C. Furlong	4.42	3.32	8.14	12.14	13.15	13.56	10.22	11.18
✕ 22.	J. Eckersley/E. Staig	4.42	3.33	8.15	12.01	13.03	13.34	10.22	11.15
23.	B. Gara/D. Parkinson	4.51	3.25	8.16	11.56	13.00	13.33	10.03	11.05
24.	H. Slater/R. Whiteside	4.32	3.46	8.18	12.09	13.04	13.31	10.28	11.26

21

25.	T. Cooper/S. Nuttall	4.38	3.46	8.24	11.53	12.57	13.34	10.29	11.26
‡ 26.	J. Docherty/S. Ratcliffe	4.17	4.13	8.30	11.29	12.44	13.13	10.43	11.48
27.	K. Eastwood/A. Cooper	4.23	4.10	8.33	12.04	13.03	13.22	10.32	11.43
28.	S. Valentine/C. Allen	4.25	4.10	8.35	12.04	13.02	13.32	10.32	11.43
29.	C. Hailey/H. White	4.35	4.00	8.35	12.06	13.07	13.41	10.41	11.37
30.	M. Buin/D. Buin	4.40	3.55	8.35	12.12	13.11	13.46	10.22	11.33
31.	A. Turner/K. Hulme	4.28	4.09	8.37	12.06	13.09	13.42	10.48	11.47
32.	T. Dennish/H. Lowe	4.17	4.22	8.39	12.09	13.08	13.39	10.52	11.57
33.	G. Tudbury/S. Walker	4.53	3.46	8.39	12.01	12.59	13.33	10.22	11.23
34.	I. Gregory/J. Vale	4.55	3.48	8.43	12.15	13.08	13.34	10.29	11.29
35.	G. O'Neill/P. Grey	4.48	3.56	8.44	12.12	13.10	13.45	10.29	11.33
✕ 36.	G. Ashton/S. Ashton	4.57	3.49	8.46	12.06	13.06	13.36	10.29	11.28
✕ 37.	J. Nicholson/M. Quinn	4.40	4.06	8.46	11.59	13.05	13.35	10.43	11.46
38.	P. Ward/J. Bold	4.34	4.13	8.47	12.18	13.22	13.58	10.47	C/P
39.	L. Kent/J. Brown	4.40	4.14	8.54	12.02	13.10	13.43	10.53	11.56
40.	J. Denmark/J. Sealey	4.45	4.11	8.56	11.57	13.04	13.42	10.46	11.46
41.	M. Houghton/G. Platt	4.30	4.27	8.57	12.16	13.20	13.58	10.31	11.52
42.	J. Davenport/S. Armitage	4.39	4.19	8.58	11.41	12.48	13.25	10.21	11.40
43.	M. Byrne/C. Byrne	4.33	4.25	8.58	11.56	13.05	13.36	10.55	12.03
44.	D. Evans/R. Pinckney	5.13	3.46	8.59	12.36	13.53	14.31	10.16	11.21
45.	S. Hughes/R. Gordon	4.48	4.12	9.00	11.58	13.05	13.37	10.20	11.35
46.	P. Cocks/S. Harper	4.47	4.14	9.01	11.56	13.03	13.37	10.51	11.56
47.	K. Jackson/G. Chaplin	4.49	5.13	9.02	12.05	13.03	13.35	10.48	11.51
48.	W. Evans/H. Evans	4.49	5.13	9.02	12.02	13.09	13.37	10.54	11.56
✕ 49.	J. Dempsey/A. Waters	4.51	4.13	9.04	12.02	13.08	13.45	10.49	11.52
50.	M. Featherby/D. Tebbutt	4.51	4.14	9.05	12.10	13.20	13.53	10.43	11.45
51.	A. Rider/C. Higgins	4.42	4.25	9.07	12.09	13.15	13.45	10.59	12.07
✕ 52.	P. Wolstenholme/ D. Wolstenholme	4.42	4.26	9.08	11.54	13.01	13.36	10.56	12.01

WANSFELL FELLRUNNERS

Posn.	NAMES	Day 1 Total	Day 2 Total	Total Time	Day 1 Checkpoints			Day 2 Checkpoints	
					9	14	20	6	2
53.	I. Hayes/C. Dudley	4.47	4.21	9.08	12.02	13.10	13.42	10.55	11.59
✕ 54.	P. Eccles/S. Eccles	4.59	4.10	9.09	12.11	13.05	13.34	10.29	11.43
✕ 55.	J. Armistead/A. Armistead	4.43	4.26	9.09	12.00	13.03	13.35	10.54	12.02
56.	S. Hamblett/A. Lowndes	4.49	4.22	9.11	11.59	13.05	13.39	10.48	11.58
57.	D. Hall/K. Elliott	4.56	4.16	9.12	12.41	13.45	14.19	10.53	11.55
‡ 58.	B. Nelson/S. Daley	4.48	4.25	9.13	11.54	12.55	13.33	10.53	12.01
59.	B. Blamires/C. Morse	4.38	4.38	9.16	12.00	13.07	13.39	10.50	12.04
60.	P. Watson/D. Nichols	4.47	4.31	9.18	12.28	13.33	14.12	10.56	12.07
✕ 61.	J. Aspden/C. Aspden	4.50	4.32	9.22	11.53	12.57	13.37	11.00	12.08
62.	M. Cox/D. Bryne	4.42	4.41	9.23	12.00	13.09	13.44	10.59	12.17
63.	A. Lamb/I. Lamb	5.07	4.18	9.25	12.22	13.29	14.05	10.46	11.54
✕ 64.	J. Dallinson/K. Monaghan	4.57	4.30	9.27	C/P	13.00	13.39	11.00	12.06
65.	D. Hughes/T. Klamper	4.52	4.36	9.28	12.15	13.24	14.05	11.13	12.15
66.	P. Hore/L. Schmid	5.02	4.28	9.30	11.51	13.04	13.45	11.02	12.06
67.	D. Topliss/D. Brown	5.09	4.21	9.30	12.21	13.31	14.06	10.56	12.00
68.	H. Wilson/A. Smith	5.07	4.24	9.31	12.27	13.32	14.16	10.54	11.58
69.	K. Taylor/J. Taylor	5.14	4.17	9.31	12.45	14.08	14.40	10.58	11.55
‡ 70.	M. Kift/C. Greenwood	5.05	4.27	9.32	11.59	13.09	13.41	11.04	12.05
✕ 71.	C. Morath/H. Morath	4.56	4.37	9.33	12.11	13.13	13.53	10.50	12.10
72.	R. Whittleston/M. Taylor	5.13	4.25	9.38	12.32	13.51	14.35	11.02	12.03
73.	D. Black/T. McLoughlin	5.13	4.26	9.39	11.57	13.09	13.51	10.58	12.02
74.	S. Lee/D. Green	5.07	4.32	9.39	12.08	13.16	13.59	10.52	11.55
75.	D. Mill/E. Palshis	4.39	5.01	9.40	11.41	12.47	13.29	11.27	12.36
76.	A. Prendergast/G. Carlsisle	5.14	4.26	9.40	12.01	13.24	14.09	10.47	12.01
77.	T. Mackay/R. Miller	5.00	4.42	9.42	12.15	13.18	14.00	10.59	12.17
78.	S. Boyce/B. Gardiner	5.26	4.17	9.43	12.25	13.26	14.05	10.43	11.47
79.	A. Shergold/T. Gale	5.12	4.31	9.43	12.58	14.03	14.40	10.56	12.07
80.	C. Heron/G. Anderson	5.08	4.37	9.45	12.32	13.51	14.33	11.04	12.13
81.	D. Harrison/P. Sharman	5.11	4.35	9.46	12.22	13.37	14.22	10.51	12.13
✕ 82.	A. Alldred/J. Alldred	5.07	4.41	9.48	11.59	13.07	13.48	11.20	12.20
83.	P. Cooper/R. Norris	5.26	4.25	9.51	12.43	13.54	14.29	10.54	12.02
‡ 84.	E. Fairlamb/S. Miller	5.00	4.53	9.53	11.55	13.05	13.42	11.04	12.21
85.	N. Reynolds/S. Perkins	5.49	4.04	9.53	12.31	13.58	14.47	10.41	11.45
✕ 86.	M. Broughton/V. Broughton	5.15	4.41	9.56	12.27	13.33	14.10	11.12	12.19
87.	S. Hilbourne/A. McGregor	5.20	4.37	9.57	12.12	13.28	14.07	11.06	12.13
88.	G. Jones/R. Sweeney	5.08	4.49	9.57	12.01	13.01	13.40	11.12	12.26
89.	R. Simpson/G. Roberts	5.35	4.22	9.57	12.31	14.05	14.45	10.54	12.01
90.	G. Goodair/G. Kennedy	5.24	4.35	9.59	12.41	13.56	14.44	10.57	12.08
91.	K. Clowry/S. Grimley	5.22	4.38	10.00	12.22	13.33	14.23	10.56	12.11
92.	J. Wood/M. Jamieson	5.59	4.04	10.03	13.27	14.32	15.13	10.46	11.45
93.	G. Butcher/S. Roberts	5.28	4.37	10.05	12.11	13.22	14.13	11.01	12.13
94.	L. Marlow/L. Marlow	5.35	4.33	10.08	12.22	13.40	14.21	11.02	12.09
95.	J. Love/J. Love	4.51	5.17	10.08	12.15	13.33	14.12	10.48	12.34
96.	H. Webb/J. Burridge	5.36	4.33	10.09	12.46	13.55	14.39	10.58	12.02
✕ 97.	A. Sweatman/C. Sweatman	5.08	5.02	10.10	C/P	13.06	13.44	11.28	12.41
98.	M. Robson/R. Robson	5.09	5.07	10.16	C/P	13.09	13.44	11.23	12.34
99.	R. Spencer/J. Spencer	5.14	5.02	10.16	12.18	13.38	14.16	11.17	12.33
100.	P. Partington/S. Partington	5.42	4.34	10.16	12.10	13.30	14.19	11.00	12.12
101.	P. Eastwood/M. Turnball	5.40	4.37	10.17	13.09	14.14	15.01	11.00	12.14
102.	J. Gillard/J. Jones	5.33	4.47	10.20	12.46	13.57	14.49	11.04	12.25
103.	A. Jones/C. Smethurst	5.35	4.45	10.20	12.45	14.03	14.40	11.20	12.26
104.	D. Lawson/C. Rudd	6.13	4.21	10.34	13.05	14.32	15.12	10.59	12.00
105.	D. Ellis/D. Wheatley	5.40	4.55	10.35	12.13	13.43	14.37	11.19	12.26
106.	T. Palfreyman/N. Cullen	5.53	4.47	10.40	12.38	13.49	14.33	10.59	12.16
107.	D. Slater/T. Turner	6.00	4.40	10.40	13.02	14.32	15.08	10.52	12.20

WANSFELL FELLRUNNERS

24

25

Posn.	NAMES	Day 1 Total	Day 2 Total	Total Time	Day 1 Checkpoints			Day 2 Checkpoints	
					9	14	20	6	2
108.	D. Ridout/B. Spencer	5.17	5.24	10.41	11.53	13.11	13.53	11.40	12.54
109.	J. Richie/P. Mackay	6.01	4.41	10.42	12.37	14.04	14.42	11.16	12.20
✕ 110.	S. Gale/S. Wiles	5.24	5.18	10.42	12.00	13.17	14.04	11.31	12.50
✕ 111.	F. Whittle/B. Charlesworth	5.37	5.06	10.43	12.01	13.21	13.59	11.28	12.42
112.	M. McLellan/C. Bell	6.20	4.24	10.44	13.18	14.36	15.24	10.56	11.56
✕ 113.	C. Lawrence/J. Lawrence	5.45	5.03	10.48	12.16	13.20	14.10	11.20	12.38
✕ 114.	S. Beresford/S. Exon	5.22	5.26	10.48	12.04	13.19	14.00	11.24	12.56
115.	D. McIntosh/J. Ellis	5.23	5.27	10.50	12.50	14.02	14.49	11.23	12.50
116.	M. Robinson/D. Maltby	5.49	5.07	10.56	12.25	13.45	14.30	11.22	12.36
‡ 117.	R. Allen/J. Bowden	5.42	5.19	11.01	12.12	13.31	14.18	11.20	12.44
118.	F. Wolstencroft/J. Sutton	5.21	5.46	11.07	12.32	13.33	14.08	11.52	13.12
‡ 119.	C. Stewart/C. Earle	5.47	5.24	11.11	12.13	C/P	14.22	11.36	12.57
120.	S. Lowe/D. Jones	5.27	5.45	11.12	12.25	13.50	14.28	11.52	13.13
121.	L. Jackson/R. Siddle	6.36	4.42	11.18	13.21	14.42	15.35	10.52	12.11
122.	D. Kay/D. Griffin	5.24	5.55	11.19	12.21	13.33	14.29	11.36	13.11
123.	C. Jones/P. Evans	5.41	5.38	11.19	12.54	14.09	14.52	11.38	13.11
124.	I. Hargreaves/K. Lumb	5.44	5.38	11.22	12.46	14.09	14.58	11.53	13.10
125.	P. Jaoy/G. Lockton	6.30	4.52	11.22	12.59	14.24	15.17	11.15	12.28
126.	P. Liley/J. Mullen	6.15	5.10	11.25	12.15	13.30	14.36	11.04	12.28
127.	T. Simms/A. Jobin	6.05	5.21	11.26	12.37	13.57	14.47	11.32	C/P
‡ 128.	F. Garry/J. Smith	5.52	5.38	11.30	12.24	14.24	C/P	11.42	13.04
129.	P. Handley/M. Westwood	5.53	5.39	11.32	12.54	14.13	15.02	11.49	13.07
130.	P. Shechter/P. Lane	6.08	5.24	11.32	12.41	14.06	14.55	11.30	12.56
131.	M. Lloyd/D. Booth	6.24	5.21	11.45	12.49	14.15	15.00	11.36	12.53
132.	I. Stevens/R. Parr	7.05	4.41	11.46	13.24	15.03	15.53	11.03	12.18
133.	A. Lee/G. Glennie	6.21	5.26	11.47	12.21	13.35	14.42	11.19	13.01
134.	J. Clarke/J. Lord	6.37	5.21	11.58	12.45	14.06	15.03	11.36	12.52
135.	A. Donaldson/S. Donaldson	6.45	5.15	12.00	13.00	14.33	15.34	11.36	12.50
136.	R. Fildes/R. Jackson	6.32	5.32	12.04	13.20	14.42	15.33	11.39	13.02
✕ 137.	R. Barr/H. Shilling	6.54	5.27	12.21	13.03	14.35	15.23	11.29	13.01
138.	D. Barras/R. Margerrison	6.34	5.48	12.22	12.47	14.13	15.04	11.48	13.11
139.	J. Forden/K. Underwood	6.38	5.48	12.26	12.41	14.17	15.12	11.56	13.13
140.	P. Wallett/I. Barnes	6.32	5.54	12.26	13.11	14.41	15.29	11.51	13.18
141.	K. Sanders/P. Marshall	6.40	5.48	12.28	12.46	14.13	15.04	11.48	13.10
142.	J. Kirkham/J. Peach	6.40	5.52	12.32	12.58	13.39	15.23	11.57	13.18
143.	S. Cobain/R. Huntbach	6.01	6.31	12.32	12.37	13.57	14.43	12.30	13.53
‡ 144.	T. Griffin/E. Norris	6.55	5.48	12.43	12.56	14.25	15.25	11.36	12.53
‡ 145.	V. Withers/J. Hillman	7.16	5.33	12.49	12.43	14.10	15.12	11.47	13.07
146.	P. Kay/R. Sanders	7.06	5.49	12.55	13.04	14.53	15.48	11.29	12.59
147.	R. Swaine/P. Swaine	6.49	6.22	13.11	12.54	14.45	15.24	11.53	13.32
148.	A. Sheath/J. Cook	7.02	6.12	13.14	13.29	15.00	15.48	12.03	13.36
‡ 149.	P. Chatterley/J. McGrath	8.12	5.19	13.31	14.07	15.22	16.27	11.29	12.53
‡ 150.	M. Cooper/S. Lightfoot	7.25	6.23	13.48	13.04	14.37	15.28	12.05	13.42
152.	R. Mills/I. Fosker	7.30	6.40	14.10	12.05	13.34	15.49	11.55	13.53
153.	I. Parker/M. Prendergast	8.37	5.38	14.15	14.24	16.26	17.34	11.49	13.10
✕ 154.	C. Williams/A. Williams	7.55	6.44	14.39	13.08	15.02	16.00	12.30	13.57
155.	N. Foreman/M. Cole	7.43	7.03	14.46	13.47	15.41	16.30		
156.	G. Morphew/R. Moores	7.57	7.24	15.21	13.23	15.08	16.25		
✕ 157.	M. Elliot/E. Elliot	8.07	7.30	15.37	13.18	15.10	16.06		
✕ 159.	L. Grey/D. Grey	7.26	8.30	15.56	13.17	15.04	16.03		
‡ 160.	M. Lamb/A. Lloyd	7.45	8.55	16.40	13.03	14.38	15.36		
	L. Smith/S. McGreskin	7.17	—		13.04	15.02	16.00	TNRCNP	TNRCNP
	M. May/S. Edwards	—	—		TNRCNP	TNRCNP	TNRCNP	11.39	13.14

WANSFELL FELLRUNNERS

Posn.	NAMES	Day 1 Total	Day 2 Total	Total Time	Day 1 Checkpoints			Day 2 Checkpoints	
					9	14	20	6	2
Wansfell Fellrunners Retired									
	D. Edwards/V. Llewellyn	9.53			13.36	16.22	17.39R		
	R. Leon/L. Forbes	7.09			13.42	15.17	16.15R		
	* P. Oliver/K. Oliver	7.05			12.41	14.16	15.11R		
	T. Lewis/A. White				14.36	TNRCNP	TNRCNPR		
	‡ M. Harrison/C. Glass	8.23			13.13	15.41	16.32R		
	D. Cartwright/A. McCarthy				14.37R				
	S. Bush/G. Sortwell				15.00R				
	P. Smallwood/D. Betjmann		R						
	B. Dearnaley/P. Lakeland				12.26R				
	J. Howe/S. Opacic				11.54	TNRCNP	TNRCNP	11.33	12.48R
	M. Brickell/R. Cooper				12.27	13.30R			

HIGH PERFORMERS


FROM HAMPTON CAMPING ACCESSORIES

Tent Pegs—Whatever the conditions: rocky soil, soft soil, sand or snow, there is a Hampton Peg to meet your needs.

Marker Wands and Avalanche Probes—Robust, lightweight mountain safety equipment that now includes the 3 metre Avalanche Snow Probe.

Flexipole—The flexible tent erection system that is lightweight and easy to pack.

Hampton Camping Accessories—reliable and strong. Available from leading retail outlets and usual wholesalers, etc.



Hampton Works Stampings Ltd.
 Twynning Road, Stirchley,
 Birmingham B30 2XZ.
 Telephone: 021-458 2901

WANSFELL BACKPACKERS

C.P./Card Punched Correctly TNR/Time Not Recorded
 CNP/Card Not Punched VP/Visit Proven
 * Mixed Team ‡ Ladies Team R/Retired.

Posn.	NAMES	Day 1 Total	Day 2 Total	Total Time	Day 1 Checkpoints			Day 2 Checkpoints	
					6	8	9	5	3
1.	C. Metcalfe/D. Metcalfe	5.20	4.25	9.45	11.00	12.29	08.42	09.41	10.14
2.	J. Chaney/E. Spain	5.38	4.27	10.05	11.17	12.58	08.46	09.46	10.23
3.	P. De'Athe/T. Brand-Barker	6.02	4.05	10.07	11.14	13.23	08.46	09.40	10.11
4.	D. Sleath/D. Flintstone	6.08	4.05	10.13	11.33	13.40	08.43	09.37	10.09
5.	M. Boler/A. Steel	5.51	4.23	10.14	11.13	12.54	08.47	09.49	10.23
6.	D. West/J. Roy	5.54	4.20	10.14	11.33	13.38	08.43	09.39	10.16
7.	M. Taylor/R. Wilson	5.58	4.21	10.19	11.11	13.16	08.51	9.46	10.25
8.	A. Wheeler/S. Longstone	6.03	4.18	10.21	11.27	13.18	08.44	09.40	10.16
9.	M. Haslam/G. Metcalfe	5.46	4.46	10.32	11.33	13.17	09.07	10.07	10.42
10.	P. Carless/T. English	6.02	4.33	10.35	11.23	13.18	08.56	10.06	10.37
* 11.	K. Bormann/B. Brierley	6.11	4.25	10.36	11.17	13.10	08.45	09.48	10.28
12.	J. Stott/S. Taylor	5.35	5.02	10.37	11.01	12.25	08.39	10.21	10.56
‡ 13.	C. Thomas/J. Hutchinson	6.07	4.31	10.38	11.12	13.11	09.02	10.05	10.37
14.	R. Sykes/D. Dixon	6.08	4.43	10.51	11.17	13.19	08.55	10.12	10.46
15.	R. Denby/R. Rawlinson	6.49	4.03	10.52	11.53	14.03	09.02	10.07	10.49
16.	J. Abbot/S. Lowe	6.03	4.51	10.54	11.13	13.19	09.00	10.04	10.39
17.	W. Harrison/T. Loftus	6.34	4.26	11.00	11.46	13.44	08.47	09.50	10.27
18.	G. Hardon/J. Hasnip	6.18	4.43	11.01	11.27	13.33	08.52	09.56	10.36
* 19.	D. Wiseman/K. Wiseman	6.13	4.52	11.05	11.16	C/P	08.53	09.54	10.31
20.	A. Bratt/O. Gardner	6.35	4.37	11.12	12.05	14.06	08.55	09.57	10.35
21.	D. Bourn/D. Gibson	6.52	4.20	11.12	11.22	13.54	08.50	09.47	10.22
22.	K. Peacock/G. Walker	7.11	4.02	11.13	11.20	14.01	09.00	10.06	10.59

WANSFELL BACKPACKERS

Posn.	NAMES	Day 1 Total	Day 2 Total	Total Time	Day 1 Checkpoints		Day 2 Checkpoints		
					6	8	9	5	3
✕ 23.	M. Woods/L. Woods	6.05	5.09	11.14	11.23	13.17	09.10	10.22	10.59
24.	C. Blackstock/M. Smith	6.24	4.52	11.16	11.19	13.39	09.00	10.00	10.36
25.	J. Tucket/R. Tucket	6.34	4.46	11.20	11.54	13.55	08.46	09.54	10.37
26.	J. Garbarino/J. Holden	6.47	4.37	11.24	11.41	13.24	08.54	09.58	10.37
27.	P. Corless/D. Corless	7.06	4.22	11.28	11.50	14.13	08.55	09.51	10.28
28.	G. Livings/M. Jefferson	6.51	4.37	11.28	11.42	13.46	08.54	09.58	10.34
29.	D. Pasley/G. Chapman	6.55	4.37	11.32	11.16	13.31	08.50	09.57	10.38
30.	J. Villa/J. Burke	7.14	4.25	11.39	11.52	13.41	08.45	09.46	10.25
31.	J. Beard/G. Williams	6.41	5.04	11.45	11.56	13.53	09.02	10.07	10.48
32.	P. Wilkinson/A. Howarth	6.57	4.50	11.47	11.46	13.40	08.56	10.05	10.43
33.	B. Jones/R. Crosby	7.06	4.42	11.48	11.23	14.06	08.59	09.59	10.38
34.	P. Rushmer/R. Chapple	6.48	5.05	11.53	11.47	14.01	09.06	10.08	C/P
35.	P. Staniland/K. Walls	6.50	5.05	11.55	11.45	13.57	09.01	10.17	10.55
36.	N. Osborne/C. Osborne	7.05	4.50	11.55	11.15	13.24	08.49	09.53	10.36
37.	B. Waddingham/I. Jack	7.11	4.52	12.03	11.16	14.02	09.02	10.07	10.48
38.	K. Jackson/S. Holland	7.02	5.05	12.07	11.12	13.38	09.06	10.08	10.57
39.	I. Beaumont/I. Taite	6.07	6.00	12.07	11.40	13.23	09.00	10.46	11.32
40.	B. Bowdler/M. Downs	7.18	4.52	12.10	11.52	14.30	08.57	10.04	C/P
41.	L. Combella/L. Cox	6.47	5.26	12.13	11.17	13.34	09.15	10.52	11.29
✕ 42.	L. McIntosh/P. Hedley	7.39	4.36	12.15	11.46	14.19	08.49	09.58	10.34
43.	M. Ball/S. Molroyd ** ** Link 867 Day 2	7.12	5.07	12.19	11.41	14.01	09.07	10.12	10.55
44.	T. Burt/P. Saunders	7.10	5.10	12.20	11.16	13.52	09.09	10.23	11.01
45.	D. Schildkamp/J. Hall ** ** Link 855 Day 2	7.14	5.07	12.21	11.49	14.00	09.07	10.12	10.55
✕ 46.	D. Goodman/P. Thompson	7.10	5.16	12.26	11.19	13.53	09.24	10.29	C/P
✕ 47.	B. Lowesmith/R. Hamblett	7.12	5.17	12.29	11.37	13.54	09.10	10.17	11.01
✕ 48.	J. Prestidge/G. Prestidge	6.57	5.33	12.30	11.38	13.39	09.13	10.30	11.20
✕ 49.	M. Carter/P. Carter	6.14	6.18	12.32	11.28	13.17	09.41	11.15	12.04
50.	M. Goodchild/M. Young	7.14	5.23	12.37	11.37	13.42	09.05	10.17	11.06
51.	J. Ling/A. Sutherland	7.07	5.35	12.42	11.27	13.41	09.18	10.40	11.22
52.	N. Parker/K. Burn	7.38	5.08	12.46	12.22	14.44	08.59	10.07	10.52
53.	D. Conder/R. Young	8.12	4.44	12.56	11.45	14.45	08.53	09.57	10.39
54.	C. Harding/S. Jycock	7.16	5.41	12.57	11.50	14.29	09.20	10.30	11.31
55.	J. Cole/M. Buckle/R. Gordon	7.17	5.42	12.59	11.54	14.29	09.19	10.30	11.29
56.	A. Corby/K. Taylor	7.23	5.36	12.59	11.26	13.59	09.27	10.30	11.25
57.	S. Copping/G. Hayward	7.18	5.52	13.10	11.36	13.46	09.19	10.38	11.29
58.	G. Owen/M. Dinnage	7.16	5.54	13.10	11.30	13.44	09.22	10.41	11.41
59.	P. Bragg/R. Morley	7.26	6.00	13.26	11.38	14.02	09.24	11.02	11.51
60.	T. Taylor/I. Hardy	8.14	5.16	13.30	11.38	15.06	09.07	10.18	10.59
✕ 61.	G. Bragg/S. Barrow	7.38	6.00	13.38	11.38	13.16	09.23	11.02	11.49
✕ 62.	S. Hawkins/B. Kenny	7.11	6.37	13.48	11.30	13.38	09.36	11.11	12.00
✕ 63.	F. Ruze/J. Hawkins	7.11	6.37	13.48	11.30	13.50	09.36	11.11	12.02
‡ 64.	E. Key/M. Hine	7.22	6.27	13.49	11.25	14.00	09.35	11.13	12.10
65.	W. Pattinson/D. Scrafton	8.03	5.47	13.50	12.10	14.59	09.25	10.54	11.42
66.	A. Thornhill/R. Newall	7.00	6.55	13.55	11.54	14.07	10.07	11.41	12.46
✕ 67.	S. Sugden/N. Roberts	7.47	6.27	14.14	11.31	14.11	09.41	11.11	12.02
68.	W. McBryde/D. Towse	9.09	5.25	14.34	11.42	15.11	09.09	10.22	C/P
69.	M. Maddison/A. Bowley	9.28	5.18	14.46	11.50	15.49	09.09	10.21	11.07
✕ 70.	G. Davis/S. Davis	8.20	6.27	14.47	11.44	14.30	09.23	11.01	11.53
71.	A. Downing/S. Peters	9.10	5.44	14.54	11.53	15.49	09.20	10.31	11.27
✕ 72.	S. Green/M. Inchmore	7.22	7.36	14.58	11.24	13.56	09.42	12.21	13.14
73.	B. Metcalf/K. Hawker	7.22	7.37	14.59	11.29	14.40	10.20	11.56	12.49
74.	P. Tilling/R. Haworth	7.20	7.39	14.59	11.46	14.15	10.38	12.36	13.26
75.	J. Hitch/L. Porter	7.23	7.44	15.07	11.28	13.41	09.31	12.44	13.20
✕ 76.	T. Carr/M. Carr	8.47	6.26	15.13	11.49	14.37	09.41	11.12	12.07

WANSFELL BACKPACKERS

Posn.	NAMES	Day 1 Total	Day 2 Total	Total Time	Day 1 Checkpoints		Day 2 Checkpoints		
					6	8	9	5	3
77.	P. Gabbitus/M. Clayton	8.27	6.47	15.14	12.06	14.46	09.22	11.12	12.08
✕ 78.	N. Cleave/E. Leatham	9.07	6.12	15.19	11.44	15.52	09.19	10.43	11.45
79.	J. Winspear/R. Lewis	8.31	6.59	15.30	12.02	14.53	09.33	11.09	12.24
80.	M. Buckley/B. England	8.14	7.16	15.30	12.10	15.00	10.02	11.48	12.33
‡ 81.	S. Denmark/D. Norris	8.43	6.55	15.38	11.45	14.44	10.12	11.48	12.40
82.	J. Forster/K. Bone	8.28	7.21	15.49	11.50	14.45	10.16	11.48	12.47
✕ 83.	M. Smith/H. Lewis	8.37	7.14	15.51	11.16	14.58	09.28	11.06	12.16
84.	D. Richardson/S. Richardson	8.12	7.39	15.51	12.06	15.02	09.37	12.05	13.12
85.	P. Neville/Newton	8.48	7.05	15.53	11.52	C/P	10.07	11.47	12.41
‡ 86.	M. Desborough/K. Desborough	9.04	6.50	15.54	11.37	15.03	09.31	11.18	12.20
87.	I. Craven/W. McCandish	8.18	7.49	16.07	11.55	14.45	09.41	12.04	13.14
✕ 88.	P. Lord/E. Barnes	8.48	7.44	16.32	11.49	14.40	09.42	11.13	12.16
‡ 89.	V. Pownall/A. Lamb	9.42	6.53	16.35	11.44	15.31	10.11	11.49	12.36
90.	P. Collins/S. Mollard	9.00	7.38	16.38	11.46	14.38	10.18	11.53	12.48
91.	D. Morrison/C. Wilson	9.29	7.31	17.00	12.15	15.38	10.41	12.43	13.30
92.	D. O'Brian/B. Patmore	9.22	7.43	17.05	11.54	14.48	10.24	12.35	13.24
93.	R. Edey/J. Laking	9.35	7.36	17.11	11.50	15.09	10.23	12.10	13.15
94.	M. Farrer/E. Antolik	10.11	7.01	17.12	11.45	16.02	09.45	11.35	12.27
95.	P. Browne/D. Alcock	9.12	8.03	17.15	12.36	15.50	10.06	11.55	13.28
96.	E. Bates/R. Fisher	9.52	7.26	17.18	11.55	16.20	09.36	11.32	13.06
97.	R. Garrett/R. Owen	9.51	7.30	17.21	12.10	15.22	10.42	12.09	13.20
✕ 98.	J. Vessey/A. Short	9.39	7.45	17.24	11.53	15.16	10.23	12.19	13.20
99.	P. Warsaw/I. Hughes	10.03	7.23	17.26	11.46	15.43	10.23	11.49	12.48
‡ 100.	L. Pearson/V. Seth-Kosoko	9.39	7.50	17.29	12.30	15.39	09.55	12.41	13.29
101.	E. Ashley/J. Bloom	10.06	7.24	17.30	12.10	16.20	10.20	12.08	13.05
102.	J. Johnson/P. Scott	10.29	7.45	18.14	12.01	16.37	09.56	12.03	13.06

103.	J. Johnson/D. Raeside	10.33	7.46	18.19	12.03	16.36	09.55	12.04	13.07
104.	R. Brown/M. Pashley	10.33	7.46	18.19	12.01	16.38	09.55	12.03	13.07
105.	G. Neilson/W. Richards	10.44	7.44	18.28	11.49	16.44	10.24	12.15	13.06
✕ 106.	H. Gibbard/K. Gibbard	11.41	7.14	18.55	11.54	16.13	09.29	11.15	12.14
✕ 107.	B. Haigh/G. Haigh	11.27	7.45	19.12	11.53	16.40	10.24	12.22	13.15
‡ 108.	D. Godward/P. Littlewood	11.55	8.03	19.58	11.53	17.03	10.32	12.37	13.47
‡ 109.	W. Atkinson/M. Brand	13.48	8.03	21.51	12.30	18.10	10.42	12.44	13.30
	T. Knagg/D. Ellis		5.30		11.50	TNR CNP	09.08	10.22	11.10

Wansfell Backpackers Retired

	S. Massey/J. Briscoe	7.24			11.17	13.39	09.36	12.22R	
	N. Tonkin/G. Armstrong	8.13			11.19	14.43R			
	G. Parkinson/M. Rice	9.51			12.10	15.22R			
	M. Taylor/R. Wilson	12.23			12.06	15.48	12.04		
	G. Hall/T. Patterson	12.19			12.06	15.48	12.04		
	S. White/P. Berryman	12.30			13.41	18.22	12.02R		
	T. Woodward/D. Armstrong				12.42	TNR CNPR			
‡	A. Forbes/J. Taylor	10.08			11.54	15.06	10.38R		
	R. Mellows/K. Lock			3.27	10.55	12.59R			
	G. Dobson/D. Briggs			5.08	11.21	14.44R			
	P. Deeran/C. Fox			2.28	12.14R				
	E. Reed/P. Dickinson			2.20	12.06R				
	P. Taylor/P. Charlton			2.52	12.38R				
	C. Higginson/H. Higginson			2.25	12.21R				
✕	D. Cowley/W. Clayton			2.17	11.47R				
✕	S. Byrne/D. Byrne			2.37	12.15				
✕	G. Matthews/L. Matthews			3.35	13.40R				