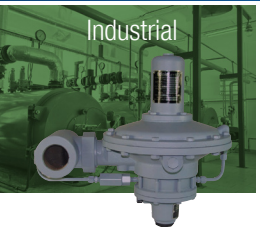




A GLOBAL LEADER IN THE
DESIGN AND MANUFACTURE
OF HIGH AND LOW PRESSURE
REGULATOR PRODUCTS



SLAM SHUTS

REGULATORS

BACK PRESSURE/RELIEF VALVES

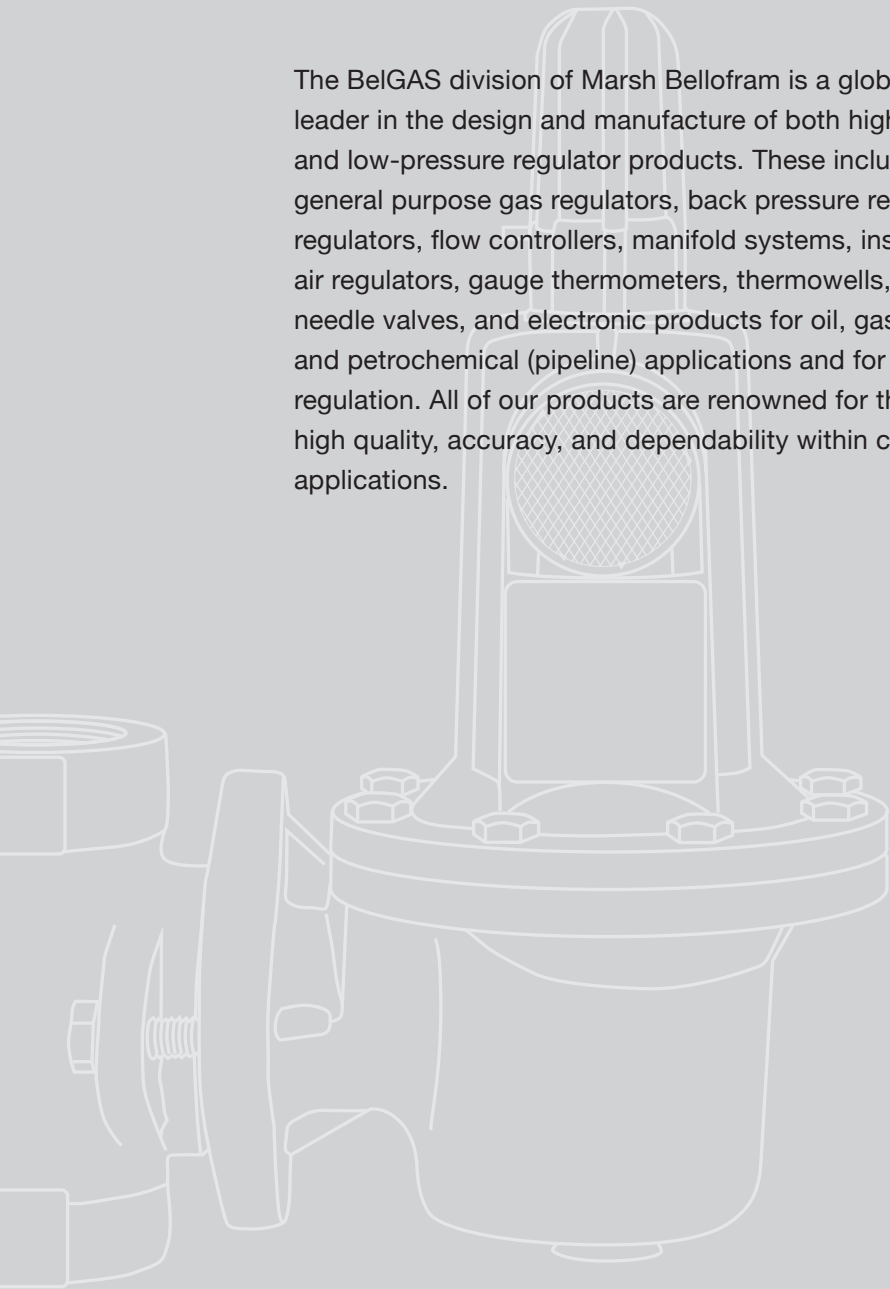
INSTRUMENT REGULATORS/FILTERS/ELECTRONICS

GAUGES

BALL VALVES

NEEDLE VALVES

The BelGAS division of Marsh Bellofram is a global leader in the design and manufacture of both high- and low-pressure regulator products. These include general purpose gas regulators, back pressure relief regulators, flow controllers, manifold systems, instrument air regulators, gauge thermometers, thermowells, needle valves, and electronic products for oil, gas, and petrochemical (pipeline) applications and for gas regulation. All of our products are renowned for their high quality, accuracy, and dependability within critical applications.



Bel^{GAS}

www.mb-belgas.com

SLAM SHUTS



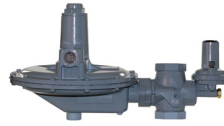
P100SX

- Residential slam shut regulator
- Dual stage design – better droop performance
- Over pressure and under pressure shut off protection



P627SX

- High flow high pressure slam shut
- Manual reset and tamper resistant design
- Over pressure shut off accurate to 1 PSIG of setpoint



P208/209

- Internal or External registration
- Over/Under Pressure protection
- Manual Reset



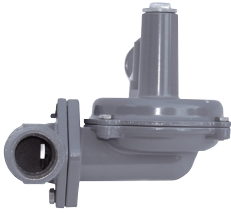
P308/309

- Commercial/Industrial slam shut with PSX2 module
- Over pressure and under pressure shut off
- P308 - Non-Relieving, P309 - Relieving

Model	Use	Max Inlet	Outlet Range	Max Outlet Flow	Port Sizes Inches
P100SX	Slam Shut - Ideal for Residential or Light Commercial Systems	125 PSIG	6" - 8" WC, 1.5 - 2.5 PSIG	1,675 SCFH	3/4, 1
P627SX	Slam Shut - Ideal for Farm Tap, Small Gate Stations, and Fuel Gas	1,000 PSIG	5 - 150 PSIG	172,000 SCFH CV 5.30	3/4, 1, 2
P208	Direct Operated - Commercial, Industrial - Slam Shut, Non-Relieving	125 PSIG	2" WC - 10 PSIG, 11 ranges	25,000 SCFH CV 26.0	1-1/4, 1-1/2, 1-1/2x2, 2
P209	Direct Operated - Commercial, Industrial - Slam Shut, Relieving	125 PSIG	2" WC - 10 PSIG, 11 ranges	25,000 SCFH CV 26.0	1-1/4, 1-1/2, 1-1/2x2, 2
P308	Direct Operated - Commercial, Industrial - Slam Shut, Non-Relieving	125 PSIG	3" WC - 10 PSIG, 11 ranges	5,000 SCFH CV 8.57	1-1/4, 1-1/2, 1-1/2x2, 2
P309	Direct Operated - Commercial, Industrial - Slam Shut, Relieving	125 PSIG	3" WC - 10 PSIG, 11 ranges	5,000 SCFH CV 8.57	1-1/4, 1-1/2, 1-1/2x2, 2

*Max inlet and flow rates may change with various material, orifice, body size, and port size selections.

NOTES



P140

- Compact Residential Regulator
- Complies with ANSI B109.4
- Straight or Angle Body



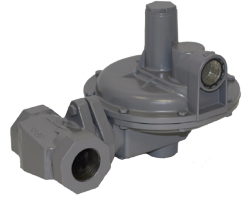
P143

- Small Commercial/Large Residential Regulator
- Complies with ANSI B109.4
- Boiler/Generator, Single End User Applications
- Low Pressure Cut-off Version Available



P201/P202

- P201 - Non-Relieving, P202 - Relieving
- External Registration available
- Available as "head-only"



P301/P302

- P301 - Non-Relieving, P302 - Relieving
- External Registration available
- Available as "head-only"
- Interchangeability with P200 body

Model	Use	Max Inlet	Outlet Range	Max Outlet Flow	Port Sizes Inches
P140	Direct Operated - Light Commercial, Industrial, Residential Regulator with IRV	125 PSIG	5" WC - 5 PSIG 7 ranges	4,300 SCFH CV 2.28	3/4, 3/4x1, 1, 1-1/4
P143	Direct Operated - Commercial, Industrial, Full Sized Residential Regulator with IRV	125 PSIG	3.5" WC - 6 PSIG 11 ranges	4,400 SCFH CV 0.455	3/4, 1, 1-1/4
P201	Direct Operated - Commercial, Industrial, Non-Relieving	125 PSIG	2" WC - 10 PSIG 11 ranges	30,000 SCFH CV 26.0	1-1/4, 1-1/2, 2, Flanged
P202	Direct Operated - Commercial, Industrial, Relieving	125 PSIG	2" WC - 10 PSIG 11 ranges	30,000 SCFH CV 26.0	1-1/4, 1-1/2, 2, Flanged
P301	Direct Operated - Commercial, Industrial, Non-Relieving	125 PSIG	3" WC - 8 PSIG 8 ranges	17,000 SCFH CV 7.5	1-1/4, 1-1/2, 2, Flanged
P302	Direct Operated - Commercial, Industrial, Relieving	125 PSIG	3" WC - 5.5 PSIG 7 ranges	17,000 SCFH CV 7.5	1-1/4, 1-1/2, 2, Flanged

*Max inlet and flow rates may change with various material, orifice, body size, and port size selections.

NOTES



P627/R627

- Direct acting regulators for high pressure applications
- Filter available
- P627 - Non-Relieving (Pressure Reducing)
- R627 - Relieving



P630

- Farm Tap, single user and custody transfer applications
- Low and High pressure variations



P133

- Custody transfer and single user applications
- Inline maintenance
- Balanced diaphragm design
- External sense line



P133K

- Custody transfer and single user applications
- Inline maintenance
- Balanced diaphragm design
- External sense line

Model	Use	Max Inlet	Outlet Range	Max Outlet Flow	Port Sizes Inches
P627	Direct Operated - Farm Tap, City Gate, Gas Gathering	2,000 PSIG	5 - 500 PSIG 7 ranges	172,000 SCFH CV 5.30	3/4, 1, 2, Socket, Flanged
R627	Direct Operated - Farm Tap, City Gate, District Gate, Gas Gathering	2,000 PSIG	5 - 500 PSIG across 7 ranges	172,000 SCFH CV 5.30	3/4, 1, 2, Socket, Flanged
P630	Direct Operated - First Stage High Pressure, Farm Tap, Gas Gathering	1,500 PSIG	3 - 500 PSIG 10 ranges	141,000 SCFH CV 8.20	1, 2, Flanged
P133	Direct Operated - Industrial Commercial	60 PSIG	2" WC - 10 PSIG 10 ranges	170,000 SCFH CV 51.40	2, Flanged
P133K	Direct Operated - Commercial, Industrial	150 PSIG	2 - 60 PSIG 7 ranges	370,000 SCFH CV 51.40	2, Flanged

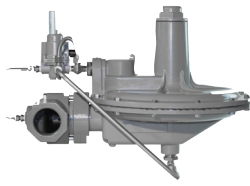
*Max inlet and flow rates may change with various material, orifice, body size, and port size selections.

NOTES



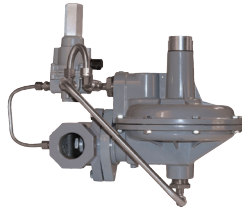
P212

- Minimize Sudden Downstream Load Change
- Wide Pressure Ranges
- Enhanced Relief



F200

- Pilot operated
- Stainless steel tubing/ fittings
- Zero bleed device



F300

- Pilot operated
- Stainless steel tubing/ fittings
- Zero bleed device



F627

- Pilot operated for Pressure Factor Measurement Applications
- Filter available

Model	Use	Max Inlet	Outlet Range	Max Outlet Flow	Port Sizes Inches
P212	Compressors, Gas Engines, Service Regulators, Commercial, Enhanced Relief	125 PSIG	2" WC - 5 PSIG 9 ranges	46,760 SCFH CV 20.1	1-1/4, 1-1/2, 2, 2 Flanged
F200	Pilot Operated - 14" Diaphragm, Commercial, Industrial, Fixed Factor Billing, Non-Relieving	125 PSIG	4" WC - 10 PSIG 3 ranges	37,290 SCFH CV 26.0	1-1/4, 1-1/2, 2 Flanged
F300	Pilot Operated - 7" Diaphragm, Commercial, Industrial, Fixed Factor Billing, Non-Relieving	125 PSIG	2 - 20 PSIG 2 ranges	5,000 SCFH CV 8.57	1-1/4, 1-1/2, 2 Flanged
F627	Pilot Operated - Farm Tap or Gate, ideal for Fixed Factor	250 PSIG	5 - 100 PSIG 2 ranges	639,000 SCFH CV 5.30	3/4, 1, 2, Socket, Flanged

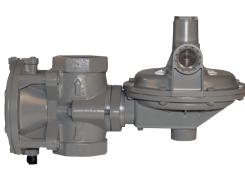
*Max inlet and flow rates may change with various material, orifice, body size, and port size selections.

NOTES



P203

- Integrated monitor operates independently of main regulator
- Test monitor in the field using Kit #971-203-T00



P303

- Integrated monitor operates independently of main regulator
- Test monitor in the field using Kit #971-303-T00



PG103

- 3" Diaphragm line pressure regulator
- ANSI/CSA Certified
- Natural Gas or Propane service



PG105

- 5" Diaphragm line pressure regulator
- ANSI/CSA Certified
- Natural Gas or Propane service

Model	Use	Max Inlet	Outlet Range	Max Outlet Flow	Port Sizes Inches
P203	Direct Operated/Monitor Commercial, Industrial, Relieving	125 PSIG	2" WC - 3.25 PSIG Monitor Springs across 13 ranges	25,000 SCFH CV 26.0	1-1/2x2, 2 Flanged
P303	Direct Operated/Monitor Commercial, Industrial, Relieving	125 PSIG	4" WC - 2.25 PSIG 6 ranges	17,600 SCFH CV 7.5	1-1/4, 1-1/2, 2 Flanged
PG103	Direct Operated - 3" Diaphragm, Commercial, Industrial - Vent Limiter	5 PSIG	2-6" WC, 5-9" WC, 7-11" WC	350 SCFH	1/2
PG105	Direct Operated - 5" Diaphragm, Commercial, Industrial - Vent Limiter	5 PSIG	7-11" WC	645 SCFH	3/4, 1

*Max inlet and flow rates may change with various material, orifice, body size, and port size selections.

NOTES



P99

- Custody transfer and single user applications
- Inline maintenance
- External sense line



P1098

- High flow pilot operated regulator
- Liquid or gas service
- Loading pressure bleeds downstream – no atmospheric relief



P95H

- Gas, Steam, or Liquid Service
- Elastomer or metal diaphragm



P600

- Pressure loaded regulator, switching valve, or monitoring regulator
- Available with non-relieving, internal relief valve, or monitoring regulator option
- Full Cast Iron Construction

Model	Use	Max Inlet	Outlet Range	Max Outlet Flow	Port Sizes Inches
P99	Pilot Operated - Boilers, Pneumatic Headers, Large Commercial Gas	1,000 PSIG	3" WC - 100 PSIG 8 ranges	265,000 SCFH CV 24.0	2, Flanged
P1098	Pilot Operated - Commercial, Municipal, Plant Air Systems and Liquids	250 PSIG	4" WC - 75 PSIG	2,500,000 SCFH	2, 4
P95H	Direct Operated - Air, Steam, Liquids, Industrial & Heating Gases	300 PSIG	5 - 150 PSIG 8 ranges	199,000 SCFH CV 12.50	1/2, 3/4, 1, 1-1/2, 2 Flanged
P600	Direct Operated - Commercial, Industrial, Partial Relief	150 PSIG	4 - 7 PSIG 6 ranges	6,600 SCFH	3/4, 1

*Max inlet and flow rates may change with various material, orifice, body size, and port size selections.

NOTES



W627

- Designed for liquid service
- External pressure registration available



L627

- LP Gas Regulator
- UL144 Listed



P119

- On/Off or Throttling Control
- NACE construction available

Model	Use	Max Inlet	Outlet Range	Max Outlet Flow	Port Sizes Inches
W627	Direct Operated - Liquid Service High & Low Pressure	900 PSIG	10 - 500 PSIG 3 ranges	82 gpm CV 3.76	3/4, 1, 2, Flanged
L627	Direct Operated - Commercial, NG Engines - Relieving Optional	200 PSIG	15 - 40 PSIG 2 ranges	6,500 SCFH CV 7.0	3/4, 1, 2
P119	Throttling or On/Off Valve - Fuel Valve for Heaters & Treaters, Liquids & Gases	150 PSIG	3 - 60 PSIG 4 ranges	CV 7.0	3/4, 1, 1-1/4

*Max inlet and flow rates may change with various material, orifice, body size, and port size selections.

NOTES



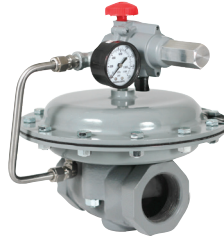
P98H

- Back Pressure Regulator/Relief Valve
- Gas, Steam, or Liquid applications



P63

- High flow industrial relief valve or backpressure regulator
- Liquid or gas service
- Versatile over large range of pressures due to various BelGAS pilots



P1808

- Pilot operated Relief Valve or Back Pressure Regulator
- Straight or Angle Body
- Liquid or Gas service



P630R

- Iron or Steel construction
- NACE Construction Available
- Natural Gas and corrosive applications

Model	Use	Max Inlet	Outlet Range	Max Outlet Flow	Port Sizes Inches
P98H	Direct Operated - Back Pressure/Relief in Steam, Liquids, Oil Production, Gas	300 PSIG	5 - 200 PSIG 9 ranges	157,000 SCFH CV 16.60	3/4, 1, 1-1/2, 2 Threaded and Flanged
P63	Back Pressure/Relief - Pilot Operated, Commercial, Municipal, Residential, Plant Air Systems	125 PSIG	3 - 125 PSIG	1,088,000 SCFH	2, 4
P1808	Back Pressure/Relief - Pilot Operated, Gas Distribution, Liquids, Air	150 PSIG	3 - 125 PSIG 3 ranges	258,000 SCFH CV 51.0	2" - Straight, Angle or Flanged
P630R	High Flow Relief - Field Adjustable, Gas, Air	500 PSIG	3 - 250 PSIG 9 ranges	48,000 SCFH CV 12.08	1, 2, Flanged

*Max inlet and flow rates may change with various material, orifice, body size, and port size selections.

NOTES



F289

- Pilot Operated Throttling-style Back Pressure Regulator
- Low pressure, high flow device



P289

- Throttling-style back pressure regulator
- Distribution and fuel gas relief applications



L289

- Throttling-style back pressure regulator for low pressure service
- Lightweight Aluminum body



P255

- Token or Full Relief Applications
- Brass or Stainless Construction

Model	Use	Max Inlet	Outlet Range	Max Outlet Flow	Port Sizes Inches
F289	Pilot Operated Back Pressure/Relief - Gas Distribution, Air	1" - 100 PSIG 2" - 15 PSIG	14" WC - 100 PSIG 5 ranges	137,000 SCFH CV 17.50	3/4 x 1, 1, 2
P289	Back Pressure/Relief - Gas Distribution, Liquids, Air, Propane Gas	1" - 100 PSIG 2" - 25 PSIG	7" WC - 75 PSIG 9 ranges	120,000 SCFH CV 17.50	3/4 x 1, 1, 2
L289	Back Pressure/Relief - Gas Distribution, Liquids, Air, Propane Gas	25 PSIG	5" WC - 10 PSIG 6 ranges	120,000 SCFH CV 17.50	3/4, 1, 2 All 2" Outlet
P255	Direct Operated - Relief Pop-Off/Reset Valve, Gas Distribution, Air	300 PSIG	50 - 150 PSIG 7 settings	60,000 SCFH CV 5.25	3/4, 1

*Max inlet and flow rates may change with various material, orifice, body size, and port size selections.

NOTES



- P32**
- Aluminum Body/
Bonnet Construction
 - Non-Relieving
 - NACE Construction
available
 - UL 144 Listed



- P36**
- Preset Regulator
 - Tamper Resistant Cover
 - Aluminum Body/Bonnet
Construction
 - Non-Relieving
 - NACE Construction
available
 - UL 144 Listed



- P37**
- Balanced Pintle
Design
 - Aluminum Body/
Bonnet Construction
 - Non-Relieving
 - UL 252 Listed



- P38**
- High Flow Version of
P37
 - Balanced Pintle
Design
 - Aluminum Body/
Bonnet Construction
 - Non-Relieving
 - UL 252 Listed

Model	Use	Max Inlet	Outlet Range	Max Outlet Flow	Port Sizes Inches
P32	Direct Operated - Instrument Supply, Final Stage	250 PSIG	0 based - 120 PSIG 4 ranges	1,200 SCFH CV 0.105	1/4
P36	Direct Operated - Instrument Supply, Final Stage	250 PSIG	0 based - 60 PSIG 3 ranges	1,200 SCFH CV 0.105	1/4
P37	Direct Operated - Instrument Supply, Final Stage	400 PSIG	0 based - 125 PSIG 4 ranges	6,600 SCFH CV 0.443	1/2, 3/4
P38	Direct Operated - Instrument Supply, Final Stage	400 PSIG	0 based - 125 PSIG 4 ranges	15,000 SCFH CV 1.10	3/8, 1/2, 3/4, 1

* Flow ratings at wide open flow / Methane

NOTES



P39

- Brass, Nickel-Plated Brass or Stainless Steel Construction
- Four-seat valve disk block assembly can be easily rotated to provide a fresh sealing surface
- Non-Relieving



P40

- Aluminum Body/ Bonnet Construction
- Relieving & Non-Relieving Available
- NACE Construction Available



P50

- Aluminum Body/ Bonnet Construction
- 40-Micron Filter standard, 5-Micron Available
- Relieving & Non-Relieving Available
- NACE Construction Available



P52SS

- Stainless Steel Construction
- 40-Micron Filter standard, 5-Micron Available
- Relieving & Non-Relieving Available

Model	Use	Max Inlet	Outlet Range	Max Outlet Flow	Port Sizes Inches
P39	Direct Operate - High Pressure Reducing for Instrument Supply	6,000 PSIG	5 - 500 PSIG 6 ranges	12,000 SCFH CV 0.130	1/4
P40	Direct Operated - Instrument Supply, Final Stage, Self-Relieving	250 PSIG	0 based - 120 PSIG 4 ranges	1,200 SCFH CV 0.105	1/4
P50	Direct Operated - Instrument Supply, Particulate and Condensate Collection	250 PSIG	0 based - 120 PSIG 4 ranges	1,200 SCFH CV 0.105	1/4
P52SS	Direct Operated - Stainless Instrument Supply, Particulate and Condensate Collection	425 PSIG	3 - 150 PSIG 4 ranges	6,300 SCFH CV 0.782	1/4, 3/8, 1/2, 3/4, 1

* Flow ratings at wide open flow / Methane

NOTES



P70

- Aluminum Body/ Bonnet Construction
- Relieving & Non-Relieving Available
- NACE Construction Available



75/P79V

- Aluminum body and housings
- Bypass valve standard, non-relieving, and high relief options available
- Volume Boosting Applications



P912

- Zinc Body/Bonnet
- U144 Listed



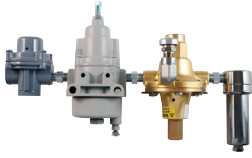
P289RC

- Used in fast-acting control valves, and surge/recycle operations

Model	Use	Max Inlet	Outlet Range	Max Outlet Flow	Port Sizes Inches
P70	Direct Operated - Instrument Supply, Final Stage, Self Relieving	250 PSIG	0 based - 150 PSIG 5 ranges	5,280 SCFH CV 0.462	1/4, 3/8, 1/2
75/P79V	Direct Operated - Relief Pop-Off/Reset Valve, Gas Distribution, Air	75 - 250 PSIG P79V - 400 PSIG	1:1 - 1:6 ratio 4 options	12,000 SCFH CV 0.61	3/8, 1/2, 3/4, 1
P912	Direct Operated - Low Pressure/ Low Flow, Final Stage, Minimal Relief	250 PSIG	3" WC - 5 PSIG 6 ranges	750 SCFH CV 0.087	1/4, 3/8
P289RC	Pilot Operated Back Pressure/Relief - Gas Distribution, Air	125 PSIG	14" WC - 100 PSIG 5 ranges	137,000 SCFH CV 17.50	3/4 x 1, 1

* Flow ratings at wide open flow / Methane

NOTES



P1367

- Two-stage pressure cut, two filtering elements and three relief concepts
- Vertical or horizontal mounting options
- Filter drain available



P350

- Stainless (NACE) or Aluminum Construction
- Glass microfiber filter element
- Filter drain available
- 1, 5, 25 or 50 Micron



T170

- Explosion Proof Motorized Regulator
- DC Stepper Motor with gear driven range screw
- Fine resolution valve control



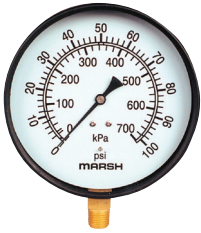
T2000

- Explosion Proof I/P, E/P Transducer
- FM/CSA/CE compliance
- 4-20mA, 1-5V, 1-10V Control Signal

Model	Use	Max Inlet	Outlet Range	Max Outlet Flow	Port Sizes Inches
P1367	High to Low Instrument supply train w/relief	4,000 PSIG	20 or 35 PSIG	20 SCFH CV 0.001	1/4
P350	Aluminum or Stainless Particulate Filter	4,000 PSIG	N/A	2,400 SCFH CV 1.0	1/4
T170	Explosion Proof Motorized Regulator	150 PSIG	0.5 - 30 PSIG	40 scfm	1/4, 3/8, 1/2
T2000	Explosion Proof Transducer	140 PSIG	0 - 120 PSIG	21 scfm	1/4

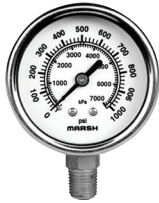
* Flow ratings at wide open flow / Methane

NOTES



General Service Gauges

- Grade B Accuracy
- 1.5", 2", 2.5", 3.5", 4.5" case
- Lower, Center Back, U-Clamp, Left & Right Mounts
- 1/8" or 1/4" NPT Steel & Brass
- 0 through 5,000 PSIG options



Severe Service Gauges

- Grade A or B Accuracy-
- 63mm or 100mm case
- Lower, Center Back, U-Clamp & Front Flange Mounts
- 1/8" or 1/4" NPT
- Stainless Steel-Dry, Glycerin or Silicone fill
- 0 through 10,000 PSIG options



Process Gauges

- Grade 2A Accuracy
- 4.5", 6" case
- Turret, Back Flange, Lower or Lower Back
- 1/4" or 1/2" NPT
- Stainless Steel or Copper
- Dry, Glycerin or Silicone fill
- 0 through 20,000 PSIG options



Gas Test Gauge Set

- Includes 2-1/2" dial size gauge
- Triple Scale: Oz./in², in. H₂O & kPa
- Provided in gray polyethylene case with 3 ft. of rubber tubing

NOTES



Tridicators

- Grade B Accuracy
- 2.5" round or 3.5" square case
- Back or Lower Mount
- 1/4" or 1/2" NPT
- Steel & Copper
- 0 through 300 PSIG options
- Temperature range from 60° through 260° F



Bi-metal Thermometers

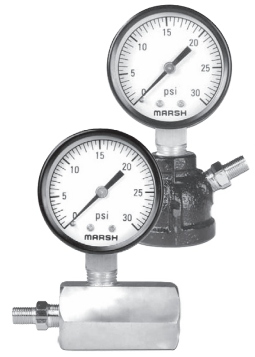
- Accuracy of +/- 1%
- 2", 3", or 5" case
- Center Back or Adjustable
- 1/4" or 1/2" NPT
- Stainless Steel
- Temperature range from -50° through 1000° F



Special Application Pressure Gauges

Fully Customizable:

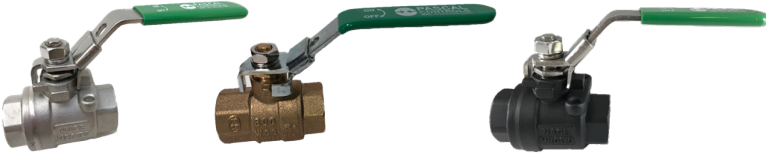
- Size
- Pressure Range
- Temperature
- Connections
- Material
- Face Graphics/ Labeling



Gas Test Gauge

- Hex or bell Type mounting
- 15 - 100 PSIG pressure ranges
- Steel case and brass internals
- Use to pressure test all new gas installations for leaks and passing inspection codes.

NOTES



BNW Series

- Full Stainless Steel
- Seal welded 2-pc body design 2000 PSIG CWP
- Full Port
- Locking Handle
- Blow-out proof stem
- Materials per NACE MR0175 NPT Threads per ASME B1.20.1

BB2 Series

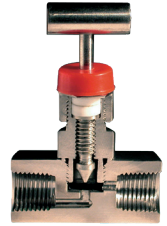
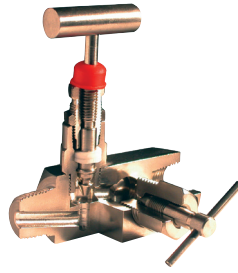
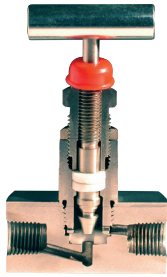
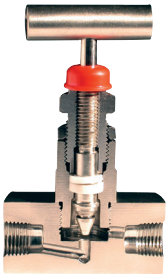
- Brass
- 600 WOG
- Full Port
- Locking Handle
- 1/4" – 4" NPT – FXF
- NPT Threads per ASME B1.20.1

BCW Series

- Carbon Steel Body/316SS Trim
- Seal welded 2-pc body design
- 2000 PSIG CWP
- Full Port
- Locking Handle
- Blow-out proof stem

NPT	BNW Series Part #	BB2 Series Part #	BCW Series Part #
1/4"	BNWFT0250A	BB2FT0250A	BCWFT0250A
3/8"	BNWFT0375A	BB2FT0375A	BCWFT0375A
1/2"	BNWFT0500A	BB2FT0500A	BCWFT0500A
3/4"	BNWFT0750A	BB2FT0750A	BCWFT0750A
1"	BNWFT1000A	BB2FT1000A	BCWFT1000A
1-1/4"	BNWFT1250A	BB2FT1250A	BCWFT1250A
1-1/2"	BNWFT1500A	BB2FT1500A	BCWFT1500A
2"	BNWFT2000A	BB2FT2000A	BCWFT2000A

NOTES



VHS & VHC Series

- Metal-to-Metal Seat Needle Valves
- Bonnet locking pin prevents accidental removal
- Hardened and ground self-centering, non-rotating tip

VSS & VSC Series

- Soft-Seat Needle Valves
- Bonnet locking pin prevents accidental removal
- Hardened and ground self-centering, non-rotating tip

BHS & BHC Series

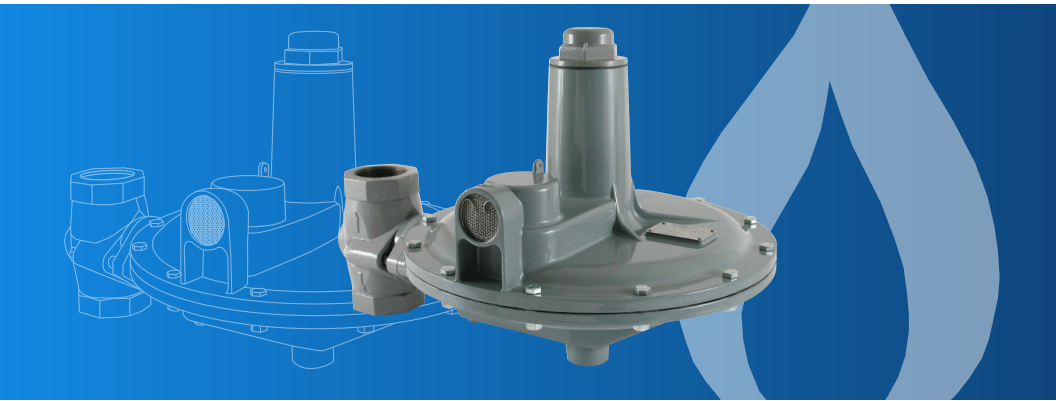
- Block/Bleed Needle Valves
- Hardened and Ground 316 Stainless Steel, Self-Centering, Non-Rotating Tip

MHS & MHC Series

- Miniature Needle Valves
- Metal-to-Metal and Soft Seat
- Bonnet locking pin prevents accidental removal

Model	Use	Material	Pressure Temperature Rating	
VHS VHC	Ideal where caustic and corrosive material are being used. Metal to metal.	ASTM A182F 316 stainless steel or ASTM A105 forged single piece steel, plated (carbon)	10,000 PSIG (70,000 kPa) @ 100°F [38°C]	4,000 PSIG (28,000 kPa) @ 500°F [260°C]
VSS VSC	Ideal where bubble-tight shutoff of liquids or gases are required.	ASTM A182F 316 stainless steel or ASTM A105 forged single piece steel, plated (carbon)	6,000 PSIG (42,000 kPa) @ 100°F [38°C]	4,000 PSIG (28,000 kPa) @ 500°F [260°C]
BHS BHC	Ideally used to isolate gauge legs and gauge reading, allow sampling to take place without loss of material and provide extra pressure ports with isolation capabilities.	ASTM A182F 316 Stainless Steel or ASTM A105 forged single piece steel, plated	10,000 PSIG (70,000 kPa) @ 100°F [38°C]	4,000 PSIG (28,000 kPa) @ 500°F [260°C]
MHS MHC	Miniature size for applications where space is limited; test stand and general equipment.	ASTM A479 316 Stainless Steel or ASTM A108 Barstock Steel, Plated	6,000 PSIG (42,000 kPa) @ 100°F [38°C]	4,000 PSIG (28,000 kPa) @ 500°F [260°C]

NOTES



BelGAS[™]

8019 Ohio River Blvd.
Newell, WV 26050 USA
800-727-5646



www.mb-belgas.com

