



London
Stock Exchange

A guide to London Stock Exchange trading services for equity securities



London
Stock Exchange Group

Contents

Background	01
Trading services for equity securities	03
SETS	04
SETSqx	06
SEAQ	08
Criteria and process for allocating securities to trading services	09
New issuers	10
Glossary of terms	11
Appendix: Criteria for the SETS and SETSqx trading services	12

Background

879,200

Daily average
number of SETS
order book trades

This guide provides an overview of the trading services that London Stock Exchange operates for the trading of equity securities. The criteria and process for allocating securities to London Stock Exchange trading services are also explained.

This guide is therefore relevant to FTSE All Share, FTSE Fledgling, AIM and smaller Main Market securities not in an index. Smaller securities are defined as those outside of the FTSE 350 index, excluding ETFs and International Order Book securities.

218 admissions to AIM and the Main Market in 2014, raising £19.7 billion

2,388 companies (1,104 on AIM; 1,284 on Main Market)

36 registered Market Makers in equity securities¹

FTSE 100 daily average value traded – £3.723 billion²

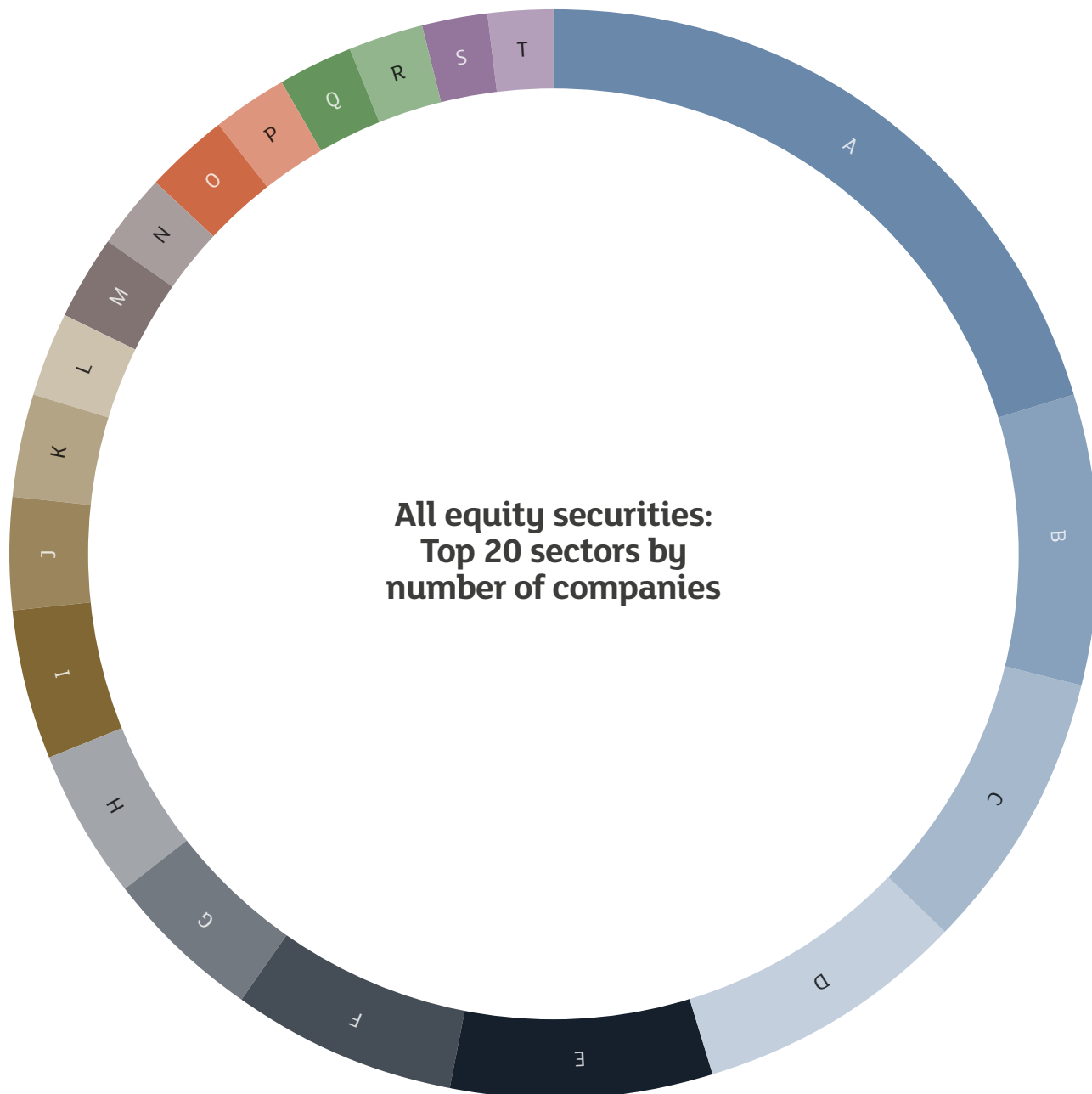
FTSE 250 daily average value traded – £520 million²

539,200

FTSE 100 daily average number of trades²

¹ As of March 2015

² On book



402

A: Equity investment instruments

167

B: General financials

165

C: Mining

158

D: Support services

151

E: Oil and gas producers

131

F: Software and computer services

92

G: Media

88

H: Real estate investment and services

87

I: Travel and leisure

66

J: Pharmaceuticals and biotechnology

60

K: General retailers

50

L: Banks

48

M: Debentures and loans

47

N: Industrial engineering

46

O: Food producers

46

P: Electronic and electrical equipment

45

Q: Construction and materials

41

R: Healthcare equipment and services

38

S: Technology hardware and equipment

36

T: Industrial metals

Trading services for equity securities

3

trading services

Equity securities are found on one of three different trading services operated by London Stock Exchange.

The three trading services operated by London Stock Exchange for Main Market and AIM securities are:

SETS

A full electronic order book with integrated Market Maker executable quotes and Central Counterparty Clearing, permitting anonymous pre- and post-trading

SETSqx

A trading service which combines a continuous quote-driven market (supported by Market Makers) with four electronic auctions (09:00, 11:00, 14:00 and 16:35) which are open to all market participants

SEAQ

A trading service used for AIM and some fixed income securities whereby at least two competing registered Market Makers provide non-electronic Market Maker quotes.

All three of London Stock Exchange's trading services operate within the Rules of the London Stock Exchange. The Rules of the London Stock Exchange can be found at www.londonstockexchange.com/traders-and-brokers/rules-regulations/rules-regulations.htm

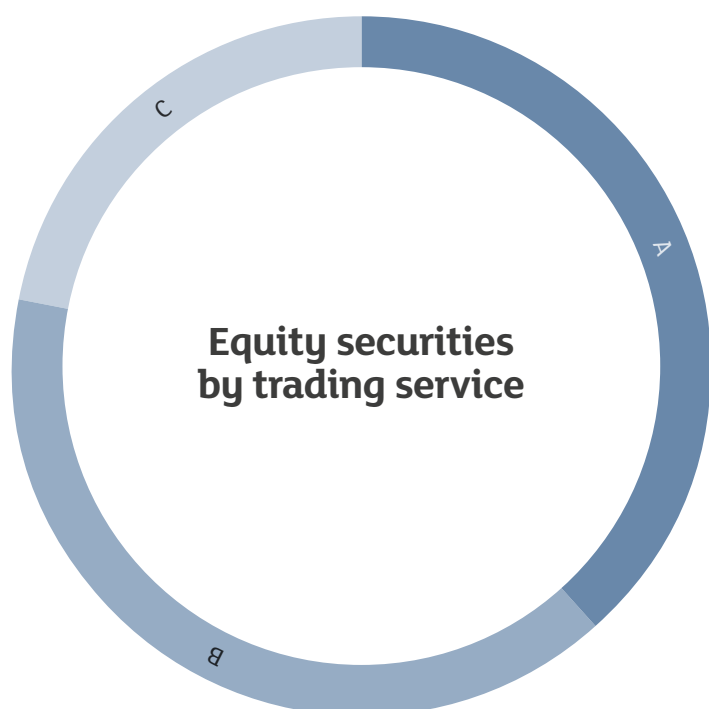
Trades executed on SETS or in SETSqx auctions and trades reported to London Stock Exchange are subject to the Rules of the London Stock Exchange.

The applicable market making rules are set out in paragraphs 4000–4510 of the Rules of the London Stock Exchange at www.londonstockexchange.com/traders-and-brokers/rules-regulations/market-making/market-making.htm

The section on obligations of Market Makers in order-driven securities (rules 4100–4110.5) covers trading services where registered Market Makers use executable quotes (EQs) to display their quote.

The section on obligations of Market Makers in quote-driven securities (rules 4200–4334) covers trading services where registered Market Makers use firm quotes to display their quote.

Further information on the criteria for trading service inclusion and the process for trading service selection can be found in the section on criteria and process for trading service selection on page 09 of this document.



922

A: SETS

958

B: SETSqx

523

C: SEAQ

* as of March 2015

SETS

922

securities
on SETS

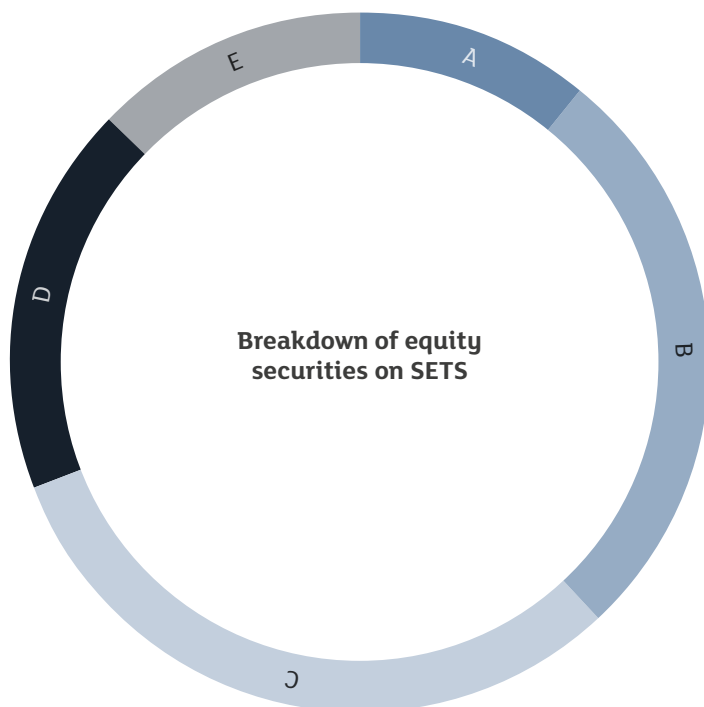
SETS is London Stock Exchange's flagship electronic order book, trading FTSE 100, FTSE 250, FTSE Small Cap index constituents, Exchange Traded Funds and Exchange Traded Products as well as liquid AIM, Irish and London Standard Listed securities.

Advantages of SETS

- Highly accessible to trading participants
- Order book users can place order types such as 'limit' and 'immediate or cancel' directly onto the order book, allowing them to participate directly in the price formation process
- Provision of the closing auction and the follow-up Closing Price Crossing Session allows order book users the opportunity to trade at the day's actual closing price.

Features of SETS

- Underpinned by the provision of Market Maker electronically executable quotes throughout the trading day, providing liquidity in at least one Exchange Market Size (EMS)
- Where there are no matched closing auction orders, the closing price is set by the mid of the Best Bid Offer
- Optimal trading conditions exist where the order book is a mixture of Market Maker executable quotes and other anonymous, displayed orders. Therefore:
 - a new stock to SETS must have the support of at least one Market Maker prepared to provide an EMS of at least £2,500;
 - a maximum spread regime exists for Market Maker bids and offers; and
 - stocks that would typically be solely dependent on Market Maker executable quotes for liquidity provision are not suitable for inclusion on SETS.
- London Stock Exchange provides a full off-book trade reporting service for executions bilaterally agreed away from the order book
- Customers who prefer that their off-book executions are not subject to the Rules of the London Stock Exchange can still use our MiFID OTC and SI Trade Reporting service for the relevant securities
- Where a trade in an AIM security is executed outside of the Rules of London Stock Exchange, the trade must instead be executed in accordance with an AIM primary registered organisation or an AIM secondary registered organisation. An example of this would be where a trade is executed off order book under the rules of another market and reported to that market.



101

A: FTSE 100

250

B: FTSE 250

289

C: FTSE Small Cap

166

D: AIM

116

E: Other Equity

SETS screen

The screenshot displays the SETS trading interface for a stock. Annotations point to specific data fields:

- Last trade price:** 150.50
- Volume of shares traded automatically (on book):** 975
- Cumulative volume traded on and off order book during the current trading day:** 587,673
- Sector/segment of the LSE trading system where the stock is traded:** Oil & Gas Production
- Volume weighted average price:** 150.01
- VWAP for automated trades:** 150.10
- Yellow strip:** Best buy/sell prices and corresponding volume and number of orders at that price. The strip shows a bid of 150.00 and an ask of 150.50.
- Market Maker executable quotes:** A list of quotes from market makers, including PEEL, WNS, CFEP, NITE, CANA, INV, SCAP, and PMUR.

Num	MPart	Size	Tick	Bid	Ask	Tick	Size	MPart	Num
6,006				150.00	150.50		6,351		
429				150.00	150.50		4,400		
1,008				149.75	150.50		1,890		
969				149.50	150.50		1,751		
5,881				149.50	150.50		3,030		
455				149.25	150.50		1,821		
1,609				149.00	150.50		2,000		
PEEL		15,000		147.00	150.75		5,602		
WNS		15,000		145.00	150.75		672		
CFEP		15,000		144.25	150.75		5,943		
NITE		15,000		142.75	150.75		1,168		
CANA		15,000		142.75	151.00		5,000		
INV		15,000		142.75	151.00		16,561		
SCAP		15,000		142.75	151.25		9,778		
PMUR		15,000		142.25	151.25		13,402		
				155.00			4,821		
				156.00			29,495		
				157.00			15,000	PEEL	
				157.00			15,000	PMUR	
				157.25			15,000	CFEP	
				157.75			15,000	NITE	
				157.75			15,000	CANA	
				157.75			15,000	SCAP	
				157.75			15,000	INV	
				159.00			15,000	WNS	
				176.50			8,000		
				280.00			810		
				322.00			3,100		
				400.00			2,000		

SETSqx

958

securities
on SETSqx

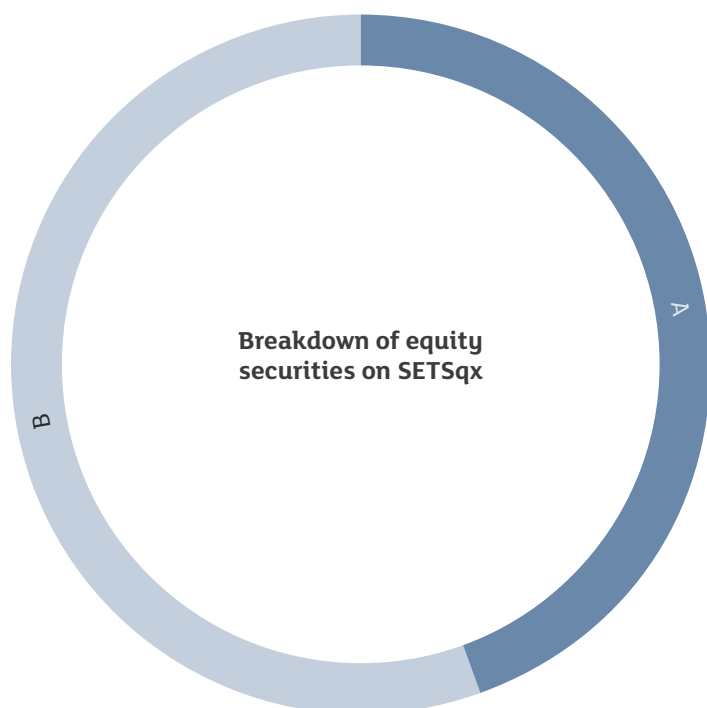
SETSqx (Stock Exchange Electronic Trading Service – quotes and crosses) is a trading service specifically designed for securities less liquid than those traded on SETS. SETSqx combines a periodic electronic auction book with standalone non-electronic quote-driven market making providing guaranteed liquidity in at least one Exchange Market Size (EMS) throughout the trading day.

Advantages of SETSqx

- Suitable for less liquid instruments that are more reliant on Market Maker quotes
- Investors can participate in the closing price formation process by trading in the closing auction
- Provides investors the ability to access prices in less liquid securities
- Investors have a choice of trading in either the quote-driven or order book auction service.

Features of SETSqx

- No Market Maker maximum spread
- Auctions are scheduled at 08:00, 09:00, 11:00, 14:00 and 16:35. Electronic orders can be named or anonymous on submission and, for most securities, order book executions will be centrally cleared
- Provides investors a choice of being able to trade against Market Maker firm quotes, or submitting orders into the auctions
- Where there are no matched closing auction orders, the closing price is set by the mid of the Market Makers collective Best Bid Offer
- Trades reported to London Stock Exchange subject to its rules benefit from the framework underpinning the Market Maker obligations and must not be on terms worse than any individual Market Maker quote after taking into account relevant trading, settlement and clearing costs, as laid out in Rule 3081 of the Rules of the London Stock Exchange
- Customers who prefer that their off-book executions are not subject to the Rules of the London Stock Exchange can still use our MiFID OTC and SI Trade Reporting service for the relevant securities
- Where a trade in an AIM security is executed outside of the Rules of London Stock Exchange, the trade must instead be executed in accordance with an AIM primary registered organisation or an AIM secondary registered organisation. An example of this would be where a trade is executed off order book under the rules of another market and reported to that market.



428

A: AIM

530

B: Equity non-index

SETSqx screen

The screenshot displays the SETSqx trading interface for the stock CANA. Annotations point to specific features:

- Mid price of best bid/offer:** Points to the 'Mid' price of 4.15.
- Sector/segment of the LSE trading system where the stock is traded:** Points to the 'Oil & Gas Production' and 'Common stock' labels.
- Volume weighted average price:** Points to the 'VWAP' value of 4.15.
- Auction timer indicating time until next uncrossing:** Points to the 'Auct Timer' field showing 07:59:27a.
- Yellow strip:** Points to the top yellow bar showing the best bid (4.10) and ask (4.20) prices, along with volume (75,000) and number of orders (1).
- Market Maker firm quotes:** Points to the list of market maker quotes below the yellow strip.
- Auction book orders:** Points to the bottom section showing auction book orders at prices 9.00, 11.00, and 13.00.

Num	MPart	Size	Tick	Bid	Ask	Tick	Size	MPart	Num
1	CANA	75,000		4.10	4.20		75,000	CFEP	1
	CANA	75,000		4.10	4.20		75,000	CFEP	
	DAVY	100,000		4.00	4.30		100,000	DAVY	
	XCAP	75,000		4.00	4.50		75,000	XCAP	
	PEEL	75,000		4.00	4.50		75,000	PEEL	
	WNS	75,000		4.00	4.50		75,000	CANA	
	CFEP	75,000		3.80	4.60		75,000	SCAP	
	LIBC	75,000		3.80	4.80		75,000	LIBC	
	SCAP	75,000		3.75					
	PMUR	75,000		3.60					

Price	Size
9.00	20,000
11.00	20,000
13.00	20,289

UnX Price	N/A	NUN	UnX Vol	0	PrVol	4,783,688	Prv Close VWAP	N/A
Total Vol BUY is	775,000	48.13%			Total Vol SELL is		835,289	51.87%
MF On Book (m)	N/A				MF Off Book (m)		N/A	
Vol 5D Avg	3,329,386		Vol 30D Avg	100	Vol 90D Avg			0

SEAQ

523

securities on SEAQ

SEAQ is London Stock Exchange's non-electronically executable quotation service that allows Market Makers to provide firm quotes in AIM securities that are not traded on SETS or SETSqx. It is not available for new securities.

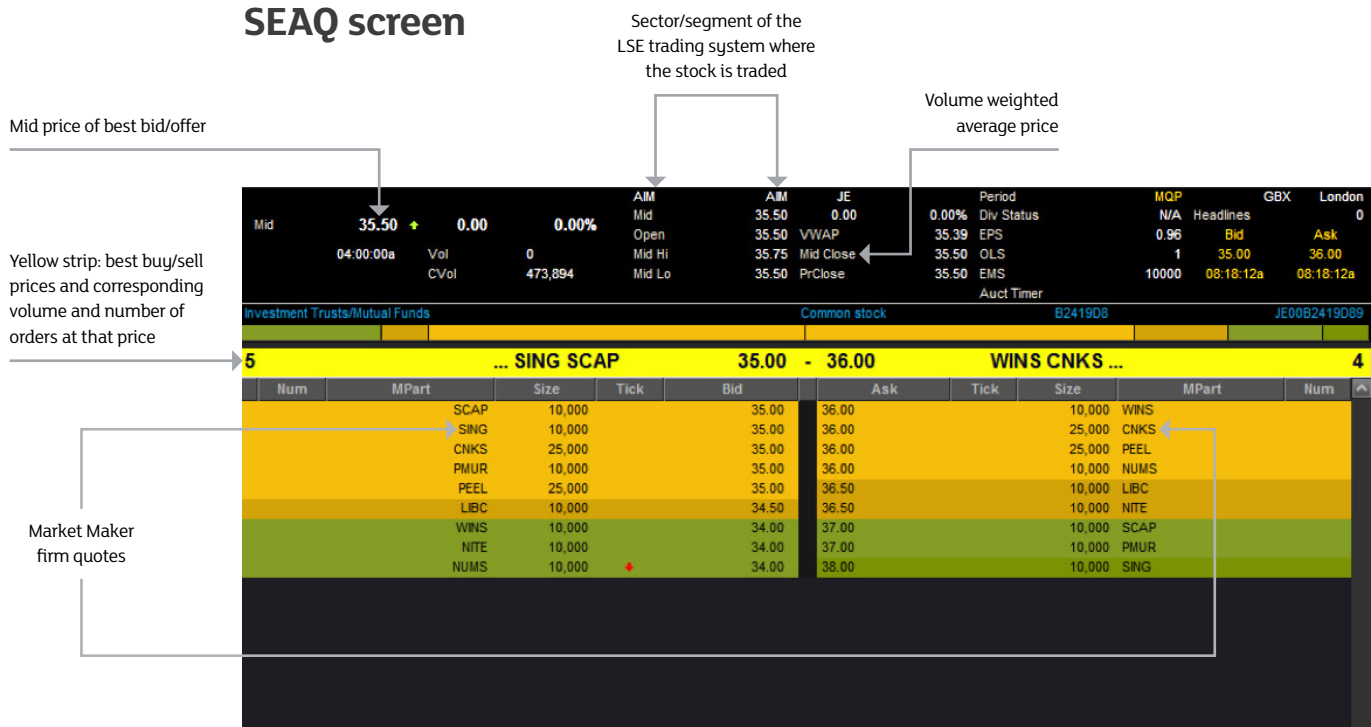
Advantage of SEAQ

- Guaranteed liquidity provision by Market Makers throughout the trading day, ensuring the provision of two-way prices in at least one EMS.

Features of SEAQ

- Suitable for less liquid instruments that would be more reliant on Market Maker quotes
- Only registered Market Makers can directly participate on screen in the price formation process
- There is no maximum spread regime or CCP provision. A minimum of 2 registered market makers are required
- Trades reported to London Stock Exchange subject to its rules benefit from the framework underpinning the Market Maker obligations and must not be on terms worse than any individual Market Maker quote after taking into account relevant trading, settlement and clearing costs, as laid out in Rule 3081 of the Rules of the London Stock Exchange
- Where a trade in an AIM security is executed outside of the Rules of London Stock Exchange, the trade must instead be executed in accordance with an AIM primary registered organisation or an AIM secondary registered organisation. An example of this would be where a trade is executed off order book under the rules of another market and reported to that market.

SEAQ screen



Criteria and process for allocating securities to trading services

Clearly defined 3-step process

A quarterly review process is carried out to ensure that a security is allocated to the trading service that is most appropriate. This process aims to provide issuers and advisers with an informed and comprehensive view of the suitability of a security to a particular trading service.

Quarterly review process

Every three months London Stock Exchange reviews the securities that are traded on its markets.

The review process encompasses:

- implementation of FTSE Group's indices review;
- implementation of trading service selection review; and
- revision of EMS (Market Maker obligation sizes) of securities.

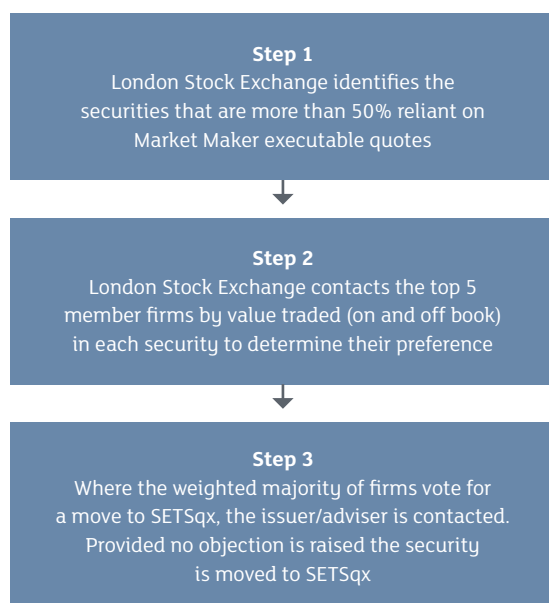
London Stock Exchange operates a 3-step quarterly review process to identify SETS securities that would be more suited to SETSqx. A move as part of the quarterly review process is subject to the non-objection of the issuer.

Outside of the quarterly review process, issuers/advisers may still request their stock be traded on a specific trading service if they meet the eligibility criteria for the service:

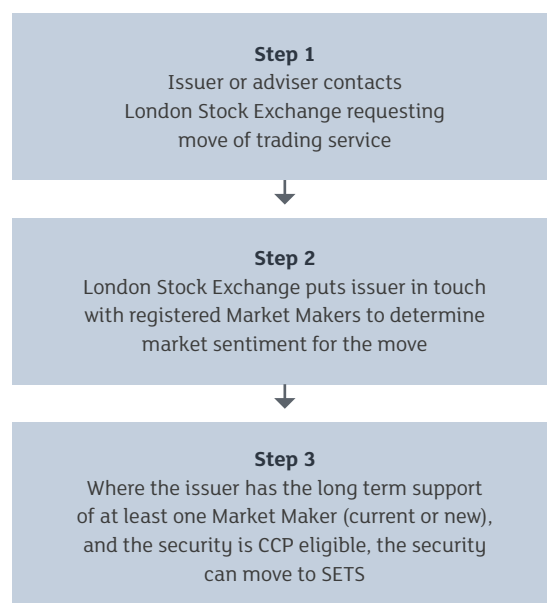
- SETSqx – no extra criteria for stocks not in one of the listed indices
- SETS – acceptance for central counterparty clearing and that at least one Market Maker is prepared to quote the EMS of at least £2,500 on SETS.

For further information on the eligibility criteria for SETS and SETSqx, please see the Appendix.

The 3-step quarterly review process for moving from SETS to SETSqx



Process of a security migrating to SETS from quote-driven at issuer request

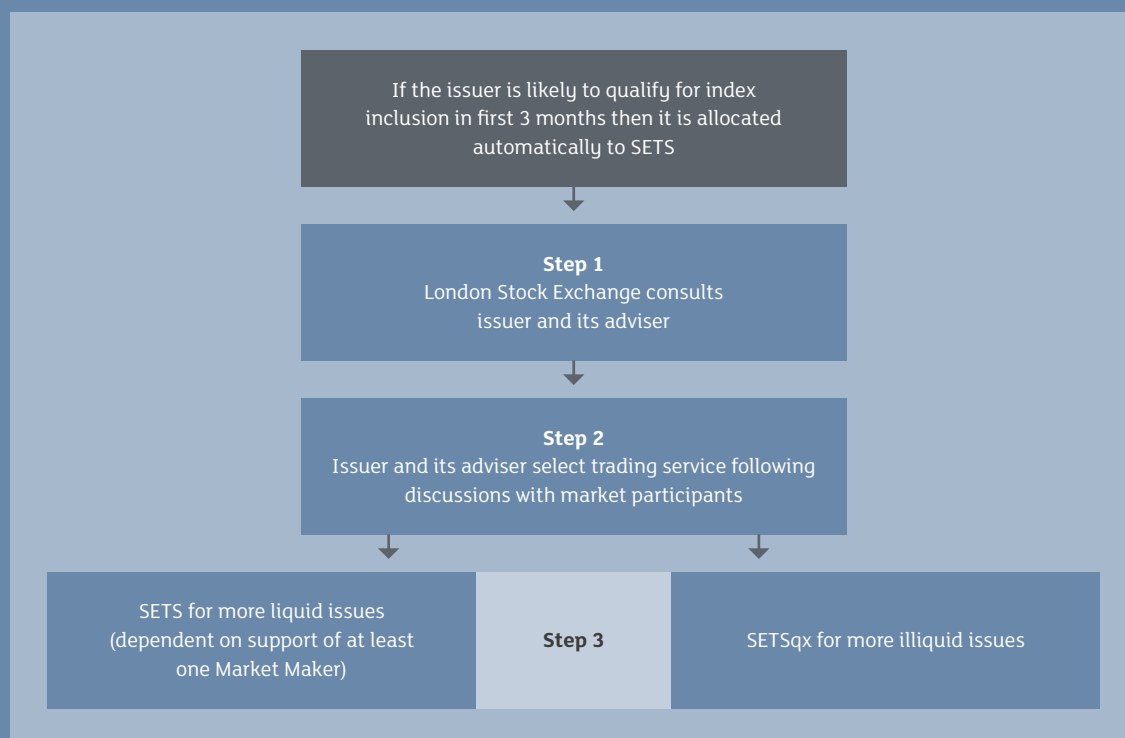


New issuers

80

AIM IPOs raise
£2.8 billion in 2014

Trading service selection for new issuers



The trading service for a new issuer is dependent on the free float and market capitalisation of the security. London Stock Exchange will provide support to the issuer and its adviser to aid the process of trading service selection. If the security is likely to qualify for index inclusion, it is automatically allocated to SETS.

In all other cases, the issuer and its adviser make the decision as to trading service selection. For Main Market, the issuer and adviser can specify their preferred trading service on Form 1, question 24. Form 1 can be found at www.londonstockexchange.com/companies-and-advisors/main-market/documents/application/form.htm

For AIM the issuer and adviser can specify their preferred trading service on the AIM Company Application Form, at the Equity Trading Service section. The AIM Company Application Form can be found at www.londonstockexchange.com/companies-and-advisors/aim/advisors/rules/regulation.htm

More information

More details about London Stock Exchange's trading services can be found at www.lseg.com/tradingservices

Trading services enquiries

Enquiries in connection with London Stock Exchange's business operations of its trading services should be emailed to clients@lseg.com

Glossary of terms

Average Daily Turnover (ADT)

Yearly turnover, divided by the number of trading days, excluding negotiated trades

AIM

A Multilateral Trading Facility (MTF) for smaller growing companies operated by London Stock Exchange

AIM primary market registered organisation

A trading venue that is included in the AIM primary organisation list that London Stock Exchange maintains and publishes on its corporate website. Trading venues will be considered for inclusion on this list upon request of London Stock Exchange member firms

AIM secondary market registered organisation

A trading venue that does not have a primary market relationship with AIM companies and meets the criteria as set out by London Stock Exchange from time to time

Auction

A period where no automatic execution takes place in order to concentrate available liquidity

Closing auction

The closing auction sets the closing price in a SETS security. The closing auction call period starts at 16:00 and the closing auction ends at 16:35, subject to 30-second random period(s) and any price or market order extensions

Closing Price Crossing Session (CPX)

A 5-minute trading session that follows the closing auction. Trades can be executed at the closing auction price

CCP

Central Counterparty Clearing House

Common trade types

AT Automated Trade (on order book)

UT Uncrossing (auction trade)

PT Closing Price Crossing Session Trade (on order book)

O Ordinary Trade (off book)

OK Ordinary Trade, delayed publication (off book)

NT Negotiated Trade (off book)

NK Negotiated Trade delayed publication (off book)

Depth weighted spread

A measurement of a security's spread for a prescribed number of shares or consideration value

Exchange Market Size (EMS)

The minimum quote size at which Market Makers are obliged to trade. EMS is set by London Stock Exchange for each security.

For SETS securities:

1% of ADT divided by average share price for period of ADT calculation

Subject to an upper cap of around £25k and; a lower cap of £2,500

For SETSqx and SEAQ securities:

2% of ADT divided by average share price for period of ADT calculation

Subject to a minimum standard EMS of £250

Increases are limited to 100% for securities with a current EMS greater than £1,000

Executable quote

A Market Maker's two-sided, electronically executable SETS order book quote displaying identity, price and size

Firm quote

A Market Maker's two-sided, non-electronically executable SETSqx or SEAQ book quote displaying identity, price and size

Market Maker

Firms that quote both a buy and sell price in a security. Market Makers are bound by obligations set out in the rules of the London Stock Exchange

MiFID – The Markets in Financial Instruments Directive 2004/39/EC

A European Union law which came into effect on 1 November 2007. The law brings harmonised regulation to financial markets across the European Economic Area

MiFID securities

Shares that are admitted to trading on an EU Regulated Market

Opening auction

The opening auction sets the opening trading price in a SETS security. The opening auction call period starts at 07:00 and the opening auction ends at 08:00, subject to 30-second random period(s) and any price or market order extensions

Over the counter – OTC

A trade that is executed off order book bilaterally between two counterparties and not under the rules of an exchange

Volume weighted average price

A single price taking into account both execution prices and quantities executed over a defined period

Trade reporting

Where a trade executed off order book bilaterally between two counterparties is reported to a market. If a trade is executed subject to the Rules of the London Stock Exchange, once reported to London Stock Exchange, that trade is deemed to be an on Exchange trade

Spread regime

Denotes the maximum spread in a security, usually between 1.5% and 25%, depending on security. Not applicable to quote-driven securities.

Appendix

Criteria for the SETS and SETSqx trading services

SETS

- A stock is included within the FTSE 100, FTSE 250, FTSE Small Cap or FTSE AIM UK 50 indices or their reserve list (if applicable)
- New trading lines that by their size are likely to fall within the above criteria within the next three months
- At issuer /adviser request provided acceptance for central counterparty clearing and that at least one market maker is prepared to quote the EMS of at least £2,500 on SETS.

SETSqx

- Subject to the non-objection of the issuer/adviser, SETS stocks outside the above mentioned indices would be allocated to SETSqx as part of the quarterly review process where:
 - Over the previous three months Market Maker executable quotes have contributed to at least 50% of the depth spread at the EMS at least 50% of the time; and
 - The weighted majority of the top five member firms (that express an opinion) as measured by value traded (on/off book) over the previous three months request it.





London
Stock Exchange

London Stock Exchange
10 Paternoster Square
London EC4M 7LS
Telephone +44 (0)20 7797 1000
www.lseg.com

London Stock Exchange has taken reasonable efforts to ensure that the information contained in this publication is correct at the time of going to press, but shall not be liable for decisions made in reliance on it. London Stock Exchange will endeavour to provide notice to customers of changes being made to this document, but this notice cannot be guaranteed. Therefore, please note that this publication may be updated at any time. The information contained in this publication and any other publications referred to herein are for guidance purposes only. London Stock Exchange and the coat of arms device are registered trade marks of London Stock Exchange plc.

© December 2015 London Stock Exchange plc. Registered in England & Wales No 02075721.