

## A. INDIVIDUAL ASSIGNMENT (15%)

1. Write a genogram
2. Creating Your Own Genogram

It is often said that we cannot pick our families. Like it or not, our relatives are our relatives. The families that we are born into all have their own stories, histories, and legacies all of which impact our lives in one way or another. In this assignment, we begin to explore our families. Think about your family: Who is in your family? What is your family's story? All families are different, thus all families are special. With this assignment you will have the opportunity to discover how special your family is by establishing your own family Genealogy Diagram - Genogram.

A genogram is a family diagram, which can be thought of as going a step beyond the family tree. Genograms provide a way of mapping family patterns and relationships across at least three generations. Genograms report information on family structures like family trees do.

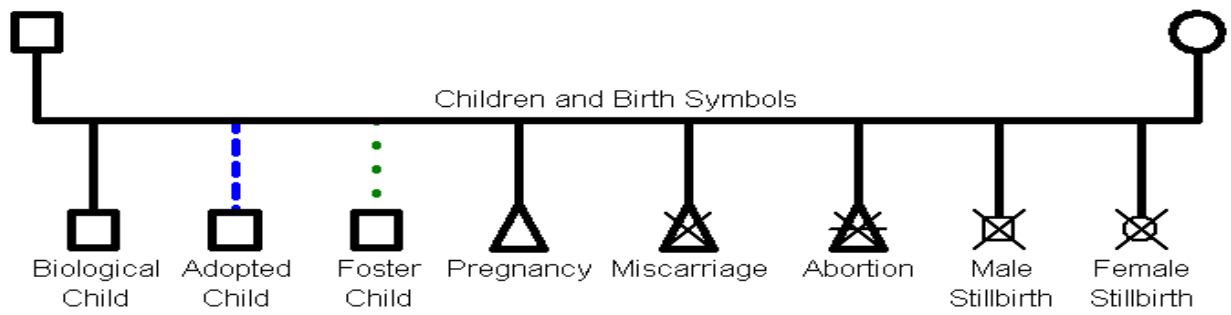
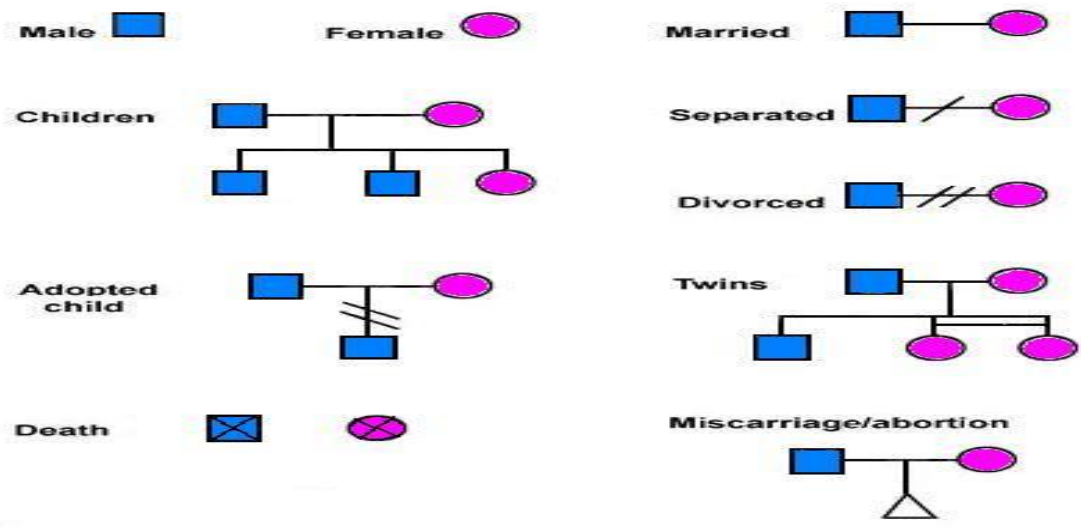
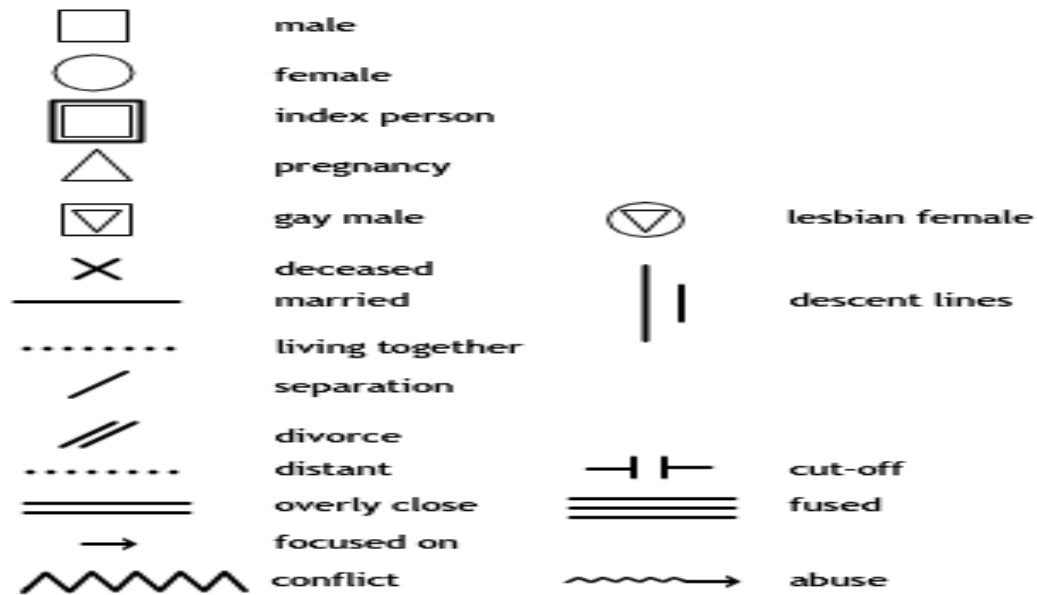
Creating your own family genogram poses questions such as - where do I begin? Before you even start putting mouse to pad, you will need to do some background work. First, you need to decide how many generations you wish to depict on your genogram. You will probably want to keep to three generations, (you and your siblings, parents, grandparents). Next, you will need to do some research. You may look at a family tree to make sure you have all the names, birthdates and relations correct. You may interview some family members to fill in missing information. You might ask family members to tell you family stories to help you understand what types of relationships different family members have. Remember confidentiality is an issue thus review the Cautions and caveats section that will help you be sensitive when approaching family members.

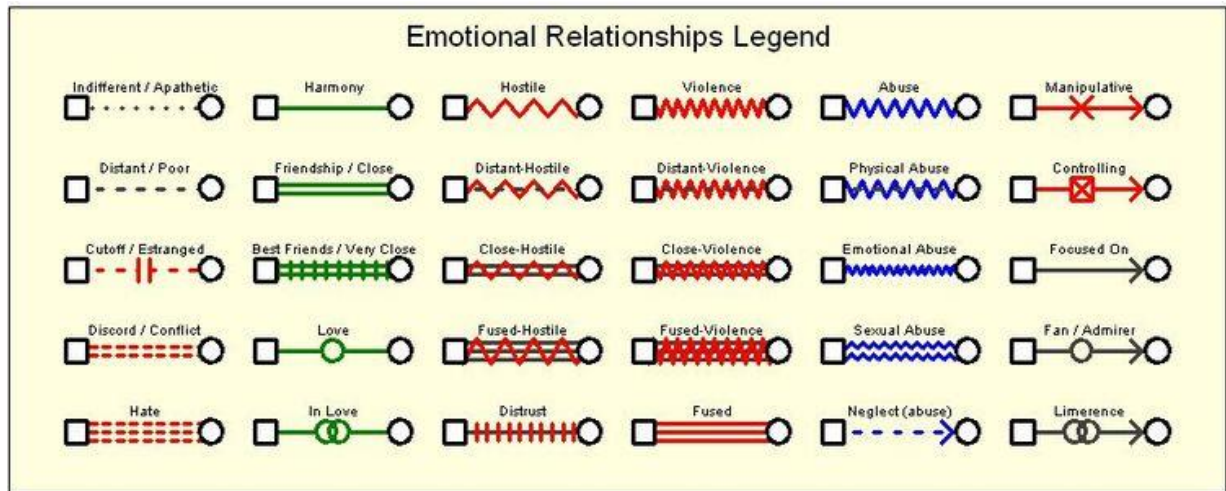
Once you have the information collected, you can let your artistic talents flow! The method of creating a genogram using the computer is quite simple as long as you refer back to the Basic genogram components section to help you ensure you are using the accepted symbols for genogram creation.

### 3. Directions

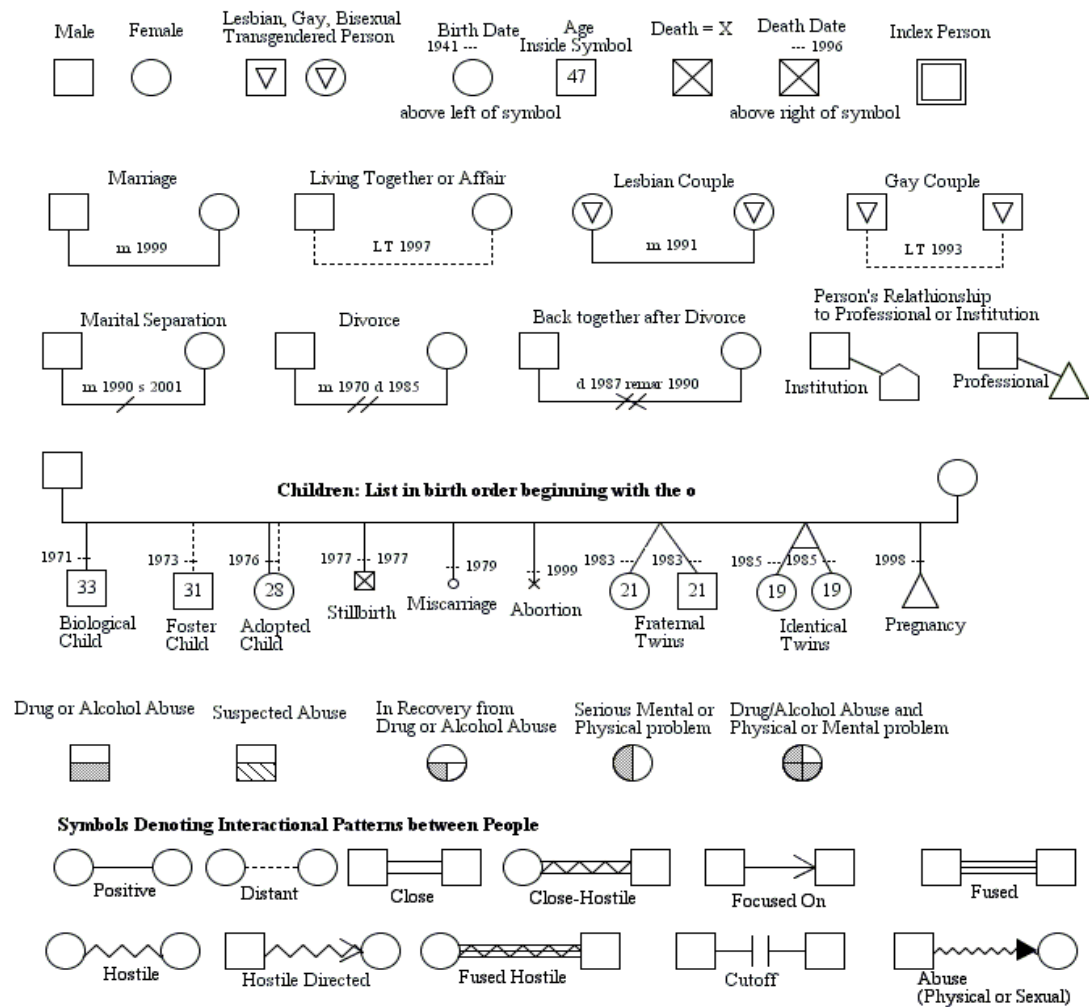
1. It should include **at least 3 generations** (your generation, your parents' and your grandparents'). If you have children, or a spouse or partner you should include them as well. List all of your family members on both the maternal and paternal sides of your family.
2. Begin with yourself. See the attached sheet for the appropriate symbols to use in your genogram. Write your name, age, place of birth, and year in school next to the appropriate symbol. Do the same for your siblings if applicable. Always place the eldest sibling on the left, and be sure to place yourself in the correct birth order. Write their names, ages, location, occupations, level of education, health status, and date or causes of death (if deceased).
3. Next draw the symbols for your parents. Write their names, ages, location, occupations, level of education, health status, and date or causes of death (if deceased). If your parents are divorced, add their date of divorce or separation, current spouses and date of marriage, and other relevant statistics. See the attached page for the proper genealogical symbols. Also add your parents' siblings.
4. Next add your grandparents and their siblings. Add the same information that you added for your parents.
5. You may also add any non-blood related persons who are a part of your extended family. Be sure to note that they are members of your extended family.
6. Make note of and mark any patterns that you observe while constructing your genealogy (substance abuse, mental illness, etc.). These patterns can be denoted by symbols (i.e. stars or flags) or colours. Apply this to each member that shows this pattern.
7. Write a three pages narrative essay describing your family genogram. Issues that should be addressed in this narrative:
  - a. First, you should begin by defining what the term "family" means to you and describing how your definition of family influenced the content of your genogram.
  - b. Second, you should explain how your use of symbols, placement of family members, connecting lines, and boundaries represent the members of your family and particularly the relationships within the family. You should also discuss your reasons for excluding family members that it may have been logical to include.

### 4. Genogram's Symbols:

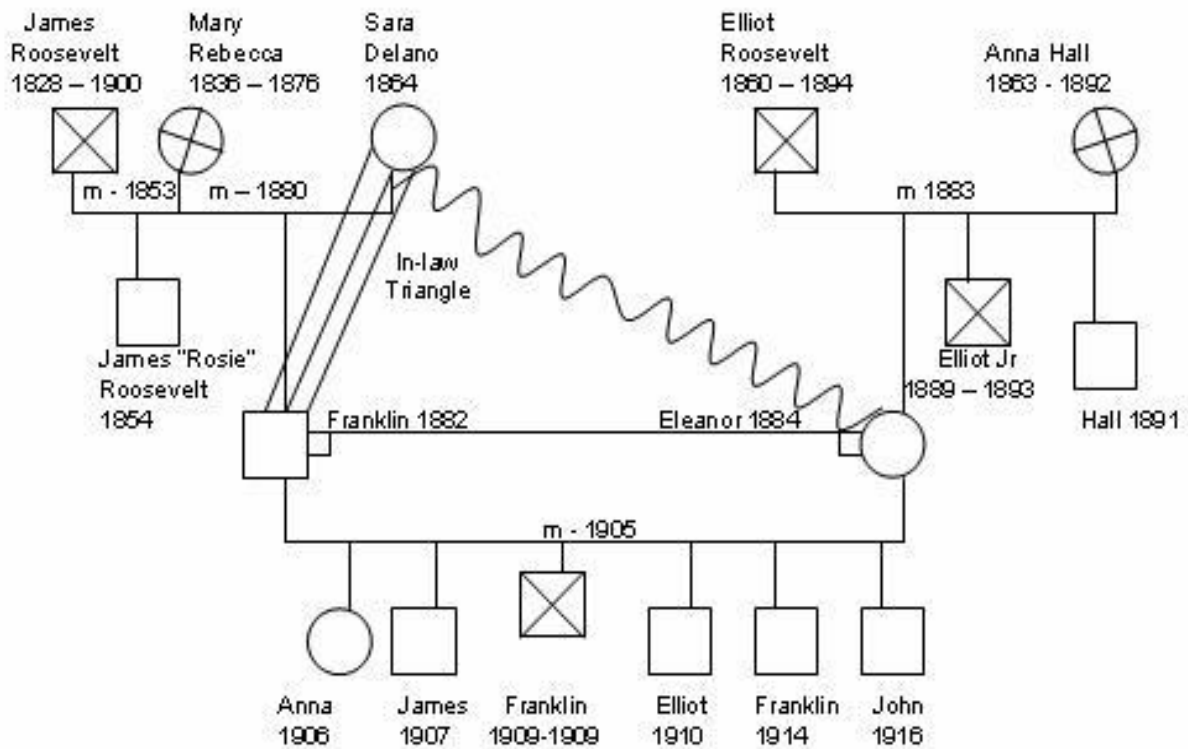




### Standard Symbols for Genograms



**Figure 4. EXAMPLE OF COMPLETED GENOGRAM**



5. Marking Scheme - Individual Assignment: 15%

	Marking criteria	Possible Marks	Awarded Marks	Comment
<b>Content (Discussion about)</b>				
1	Introduction	1		
2	Content	6		
3	Genogram Graf	5		
4	Conclusion	1		
5	Format/Table of Content	1		
6	Citation /References (APA style)	1		
	<b>Actual mark awarded: ____</b>	<b>General Comment:</b>		

**B. GROUP ASSIGNMENT (20%)**

1. In a group of three (3), Write any of the family & marriage issues such as finances, household responsibilities, childcare, infidelity, physical abuse, sexual & romantic issues, communication, unresolved baggage from youth, unfulfilled expectations, resentments, considering divorce, cannot get along, healing after trauma, loss of attraction etc.
2. Support your arguments with related journal article.
3. Submit your assignment in both hard copy and soft copy (Morpheus).
4. Marking Scheme - Group Assignment: 20%

	Marking criteria	Possible Marks	Awarded Marks	Comment
<b>Content (Discussion about)</b>				
1	Introduction	2		
2	Content	12		
3	Conclusion	2		
4	Format/Table of Content	2		
5	Citation /References (APA style)	2		
	<b>Actual mark awarded: _____</b>	<b>General Comment:</b>		

### C. GROUP PRESENTATION (15%)

1. In a group of three (3), conduct a family counselling session and present a report. You may use the KMC 2073 related forms. The session need to expand for three (3) sessions for the KMC 2073 requirements. However, only one (1) session needed for this assignment.
2. Please limit you presentation between 10-15 minutes ONLY. Marks will be deducted for the extra times taken.
3. During presentation students should prepare power point slide, however it depends on students how to present the findings from the assignment (i.e: forum, discussion, role play, drama etc).

Below are points that will be evaluated by lecturer:

- Clarity
- Level of confidence
- Presentation
- Content
- Experience Development
- Conclusion

#### 4. Marking Scheme – Group Presentation: 15%

Group: ..... Leader: .....

The power point presentation should content:

- Introduction
- Case Details
- Helpee Profile
- Techniques and Skills
- Model and Theories
- Group Learning Experience
- Reflection (feeling and content)

	Marking criteria	Possible Marks	Awarded Marks
<b>CONTENT (PRESENTATION)</b>			
1	Clarity	3	
2	Level of confidence	3	
3	Presentation	3	
4	Content	3	
5	Experience Development	3	
	<b>Maximum Total</b>	<b>15</b>	
	<b>Actual mark awarded: ____</b>	General Comment:	

—

**D. WRITING FORMAT FOR ASSIGNMENT (for both individual and group):**

- 1) FIVE (5) Pages ONLY: (Not included cover page, table of content and references)
- 2) 12 Font (Times New Roman)
- 3) 1.5 spacing
- 4) 1" left and right margin
- 5) 1" top and bottom margin
- 6) Justify
- 7) Binding tape ONLY
- 8) Cover assignments should be in **WHITE** only (NO need plastic cover)
- 9) Provide the articles, journals and any others reading materials that become your references
- 10) Do submit your assignment on the date stated. If not, I will not hesitate to deduct your mark for late submission. (-1 mark per day).