



AMX: Smarter, Simpler Multi-User KVM Switching

AMX5000 • AMIQ • AMX5100 • AMWorks

For years Avocent has built **KVM switching solutions** that help many of the world's most successful companies reduce the complexities of growing IT infrastructures. Avocent's field proven KVM switching and connectivity solutions provide **smarter** access and **simpler** manageability for "real world" IT environments. Our advanced KVM switching technologies continue to provide the **solutions** and the reliability you've come to expect from the industry leader.

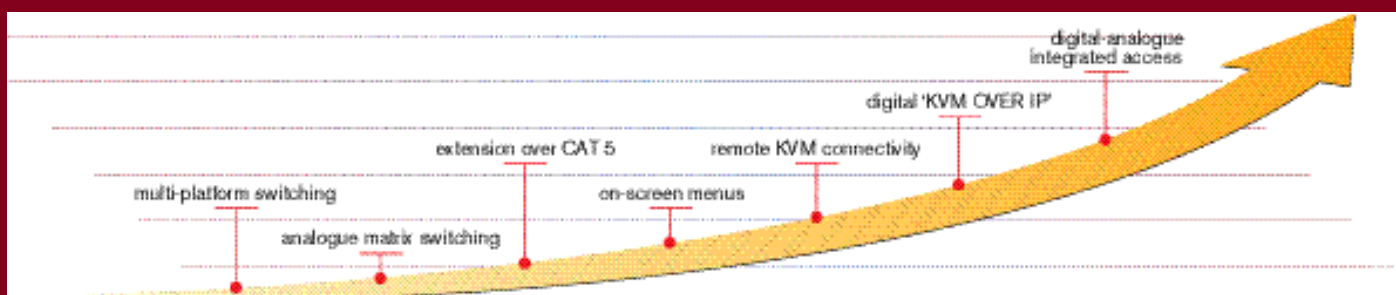
KVM Brief

KVM stands for **K**eyboard, **V**ideo and **M**ouse. A KVM solution allows multiple sets of keyboards, monitors and mice to be replaced with a single set of control peripherals. KVM technology provides easy access and control to any connected device.



OUR HISTORY OF

innovations



The AMX advances Avocent's field proven technology and market leadership in analogue matrix design by providing smarter KVM switching solutions. The AMX delivers powerful analogue matrix switching, simple installation and advanced administrative tools to help network administrators efficiently manage their IT environment.

Designed to support growing server installations, this analogue matrix solution brings switching intelligence and flexibility to your network. With this smart solution, IT managers easily reduce installation time and expense while increasing network manageability.

The AMX supports multi-user, multi-platform, multi-rack server environments and provides end-to-end CAT 5 connectivity for access from the desk to the server. The AMX includes the AMX5000 analogue matrix switch, the AMIQ CAT 5 cable interface, the AMX5100 user station and the AMWorks advanced system administrative software tool.



SPECIFICATIONS

MECHANICAL	Height	Width	Depth	Weight
AMX5000 Matrix Switch:	1.7" (4.3cm)	17.2" (43.2cm)	11.1" (28.1cm)	9.3 lbs (3.7kg)
AMIQ-PS2 Cable Interface:	0.8" (2.0cm)	2.4" (6.1cm)	14.1" (36.0cm)	0.8 lbs (0.3kg)
AMX5100 UserStation:	1.74" (4.4cm)	10.9" (27.9cm)	11.5" (29.2cm)	5 lbs (2.0kg)

ENVIRONMENTAL / POWER / HARDWARE

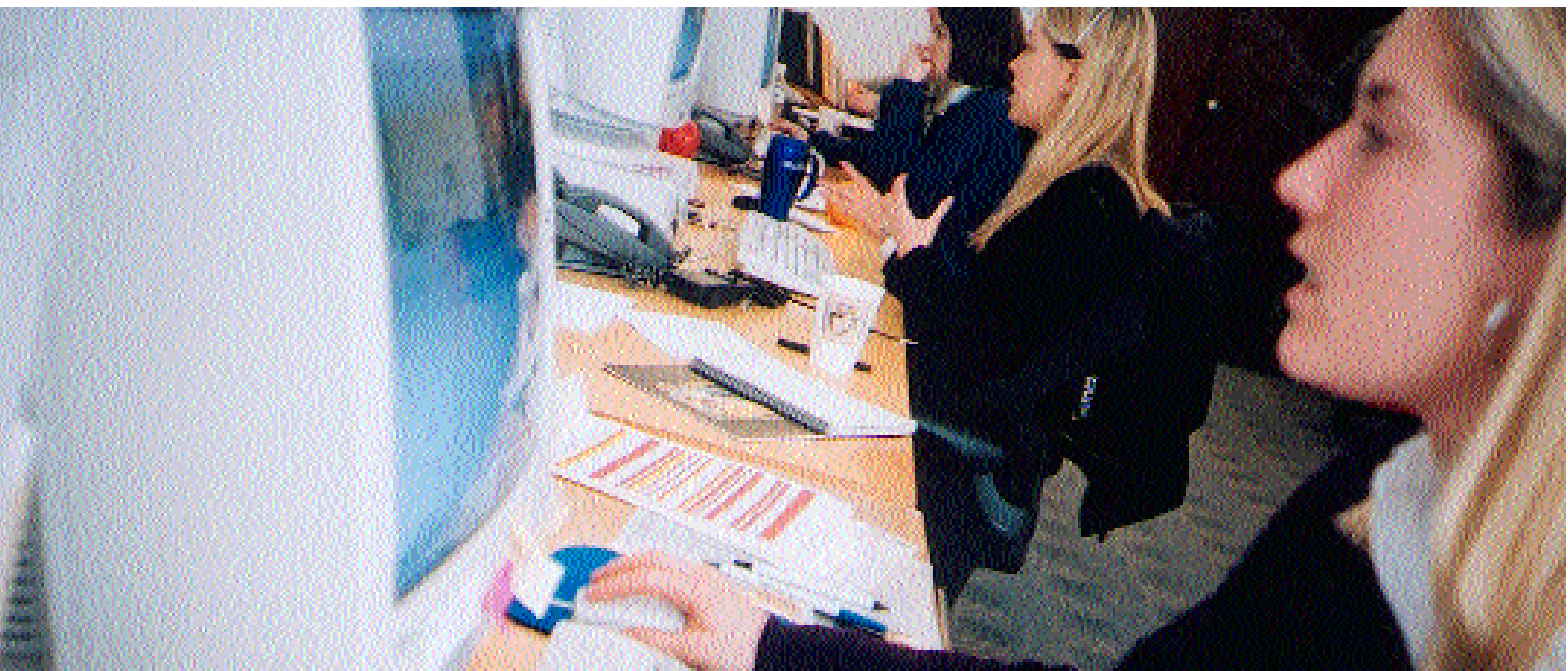
Operating Temperature	32° (0°C) to 122° (50°C)
Storage Temperature	-4° (-20°C) to 122° (50°C)
Power Requirements	100 - 240 VAC, 50 - 60 Hz
Supported Hardware - Computer	AMIQ-PS2 Cable Interface: IBM PC/AT, PS/2 and 100% compatibles
Supported Hardware - Video Modes	VGA, SVGA, XGA, SXGA, up to 1600 x 1200 @ 75 Hz resolution
Supported Hardware - Peripherals	AMX5100 UserStation: PS/2 keyboard, PS/2 mouse, IntelliMouse (PS/2 only), Sun Type 5 and Type 6
Supported Cable Types	Unshielded twisted pair, including CAT 5, CAT 5e, CAT 6
Warranty	Two Years

ORDERING INFORMATION

AMX5000-EU	8 output ports, 32 input ports, rack mount switch
AMIQ-PS2	Single server, CAT 5 connection, cable interface
AMX5100-EU	Single user, CAT 5 connection, desktop userstation
AMWorks	System administration software included

flexible

SWITCHING SOLUTIONS



AMX5000, AMIQ & AMWorks



Built on Avocent's superior analogue switching technology, the AMX5000 matrix switch is particularly effective in evolving server installations. The AMX5000 highly scalable architecture easily accommodates additional servers and users. This matrix switch allows access from a single point or simultaneous access for up to eight users throughout the data centre.



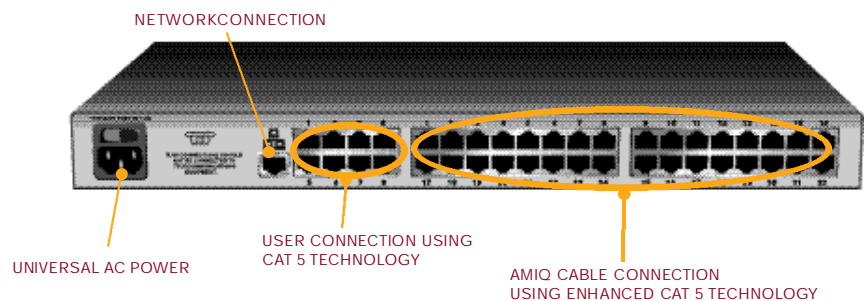
The AMIQ enhanced CAT 5 cable interface is the new choice for flexibility and performance in robust IT environments. The CAT 5 design and video technology eliminates bulky cabling connections and delivers real-time, high bandwidth video for KVM switching up to 1,000 feet away from the server. The AMIQ's built-in memory eases configuration by assigning and retaining unique server identification codes for each attached server. This cable interface intelligence enhances security and prevents unauthorized access to a server through cable manipulation.

AMX features the OSCAR on-screen management tool, which lets you conveniently switch between connected devices. If you require centralised administration of the AMX, AMWorks management software is included with each switch. The AMWorks Java-based system administration tool supports customised user profiles and multi-level security. The AMWorks allows system administrators to build a user database with assigned access and password protection for each server. Administrators can view all activities that take place on the KVM system, including user login, switches made to servers and changes made to the system connections or setup. The database is centrally stored and can be downloaded to the switch via the network connection port available on all AMX5000 units.



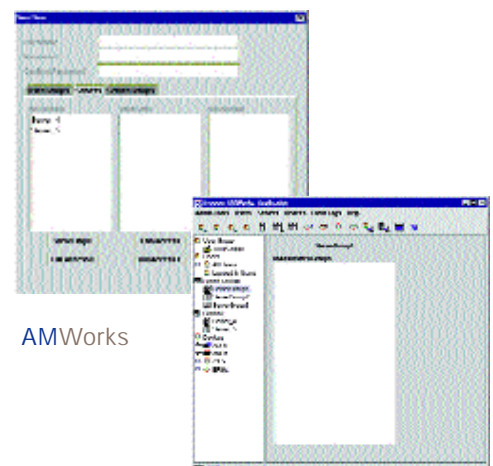
Avocent's advanced switching solution provides the best combination of flexibility and performance in today's IT environment.

RELIABLE TECHNOLOGY, ADVANCED DESIGN



FEATURES & BENEFITS

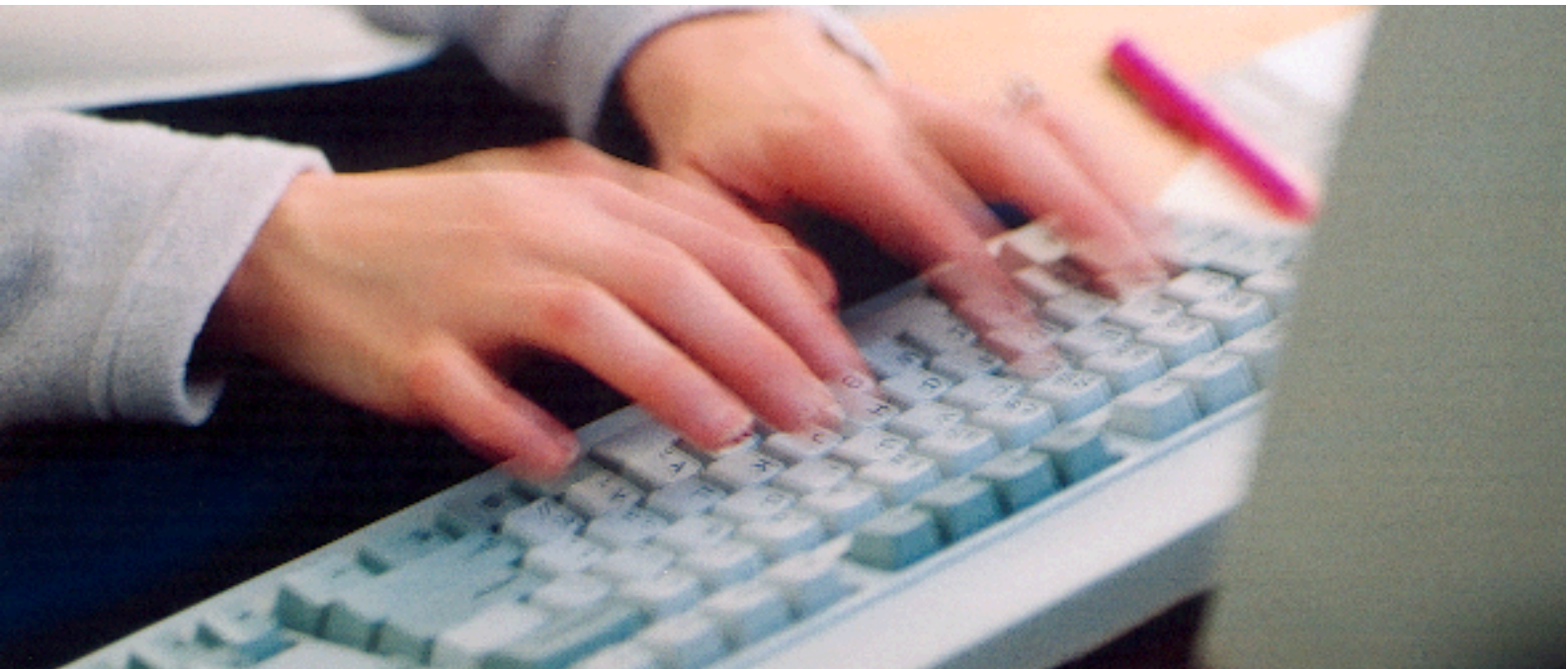
- Access – Full non-blocked, each switch supports eight users and 32 servers
- Expandability/Scalability – Architecture makes it easy to add and support more servers
- Connectivity – End-to-end UTP cable, including CAT 5, CAT 5e, CAT 6
- AMIQ Cable Interface – Assigns and stores unique server identification code for easier configuration and enhanced security
- Multi-platform – PS/2 and Sun server support
- Keep Alive – Allows attached servers to continue operating in the event of power failure to the switch
- Flash Upgrade – Simultaneous flash updates for all connected devices
- AMWorks – Advanced Java-based system administration tool
- Event Log – AMWorks tool used to maintain a record of user logins and switching activity



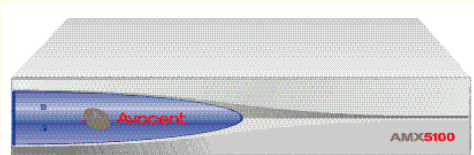
AMWorks

simpler

SWITCHING SOLUTIONS



AMX5100



The AMX5100 user station simplifies access at the desk by increasing user control and delivering optimal real-time video to the user's desk. The AMX5100 connects to the user's multi-platform KVM peripherals and sends the KVM signals over an industry standard CAT 5 cable to Avocent's AMX5000 analogue matrix switch. This CAT 5 connectivity and analogue switching technology provide multi-user access and control to any server in your network. The AMX5100's design automatically compensates for varying cable types and lengths and adjusts for signal losses each time a switch is made to the server.

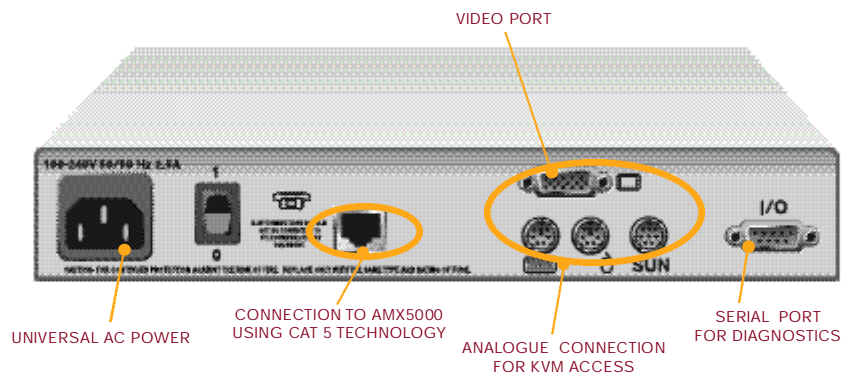
The AMX5100 works with the patented On-Screen Configuration and Activity Reporting (OSCAR) interface. OSCAR uses multi-lingual, intuitive menus for point and click system configuration and server selection. This full system management tool supports switching in share, private and scan modes.





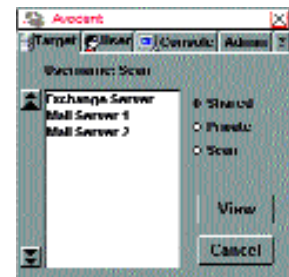
Avocent's solutions address the challenges facing "real world" IT environments. Our solutions provide simpler network manageability.

MAXIMUM PERFORMANCE FOR "REAL WORLD" IT ENVIRONMENTS



FEATURES & BENEFITS

- Video Display – Optimal video resolutions up to 1900x1600
- Connectivity – End-to-end UTPcable, including CAT 5, CAT 5e, CAT 6
- Compact Design – AMX5100 doubles as a monitor stand with zero footprint on the desk
- Multi-platform – Supports PS/2 and Sun peripherals
- On-screen Management – Point and click intuitive menus with multi-lingual support
- Flash Upgrade – Simultaneous flash updates for all connected devices
- High Quality Video - Automatically compensates for varying cable types and lengths and adjusts for signal losses each time a switch is made to a server

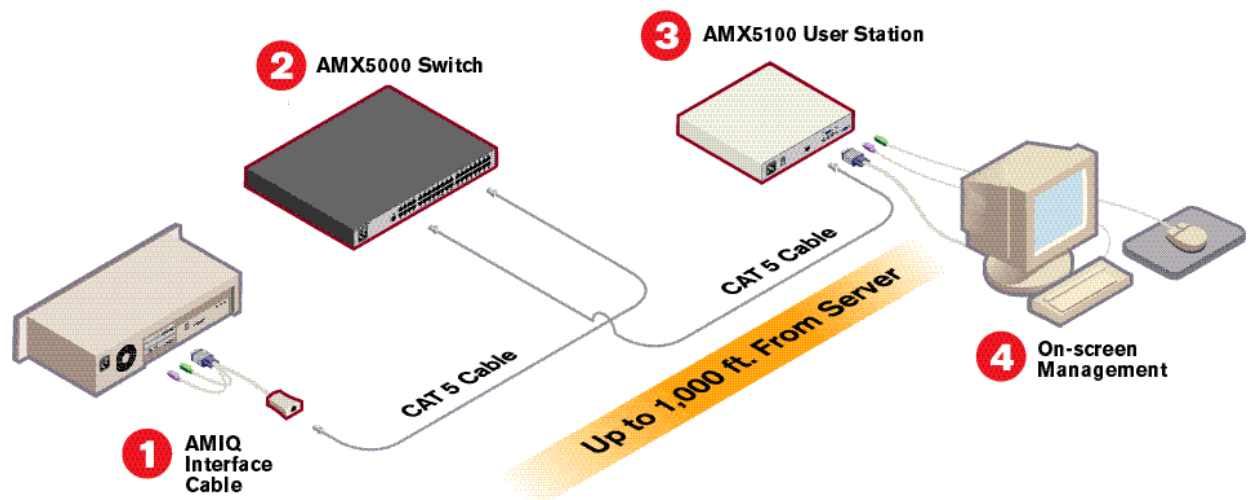


OSCAR

easy

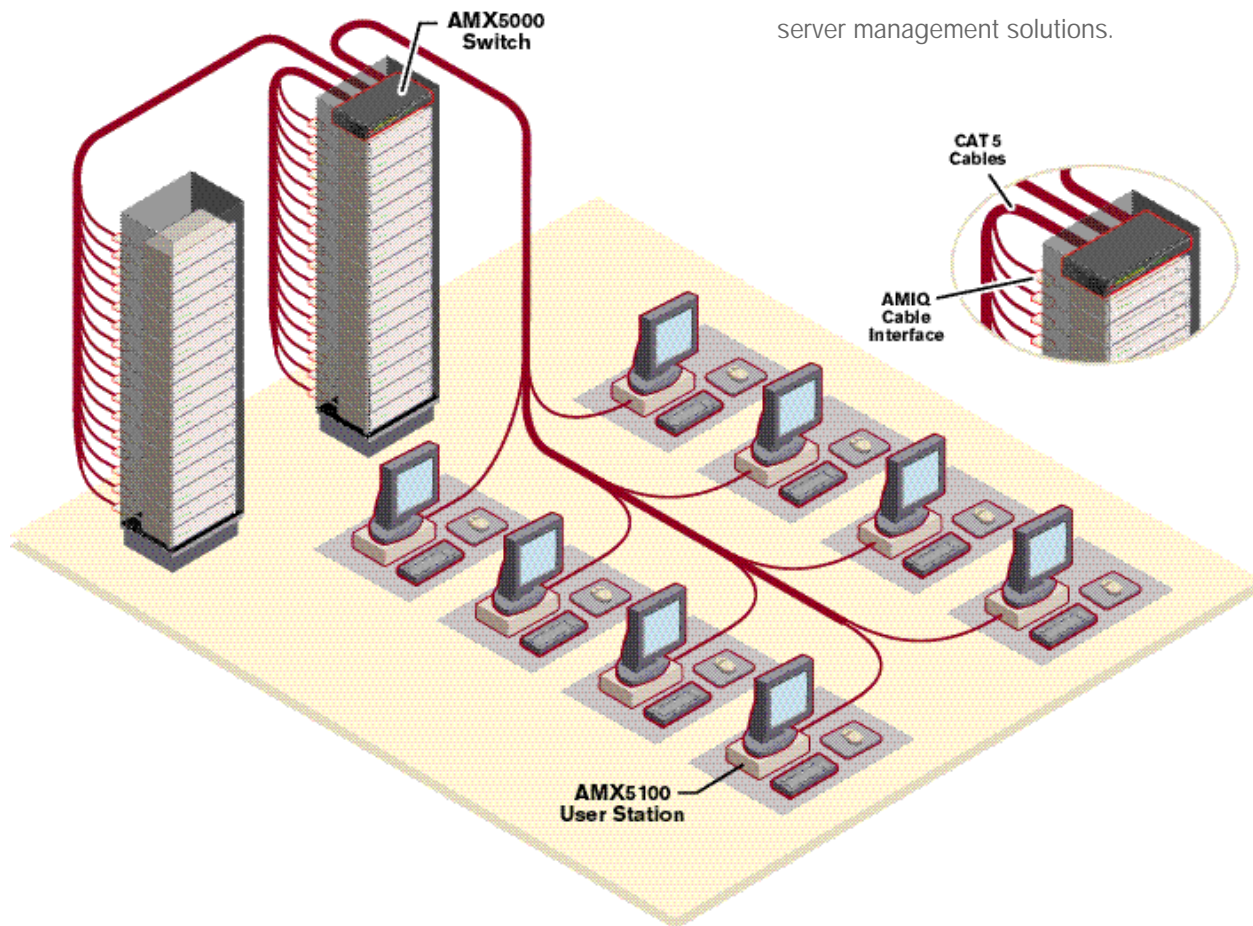
INSTALLATION

1. Connect the **AMIQ CAT 5 cable interface** to the appropriate ports on the target **server**.
2. Connect the **AMIQ CAT5 cable interface** to one of the 32 server ports on the rear of **AMX5000 matrix switch** using CAT 5 cabling.
3. Connect the **AMX5000 matrix switch** to the user connection on the rear of **AMX5100 user station** using CAT 5 cabling.
4. Connect the **user's KVM peripherals** to the KVM ports on the rear of the **AMX5100 user station**.



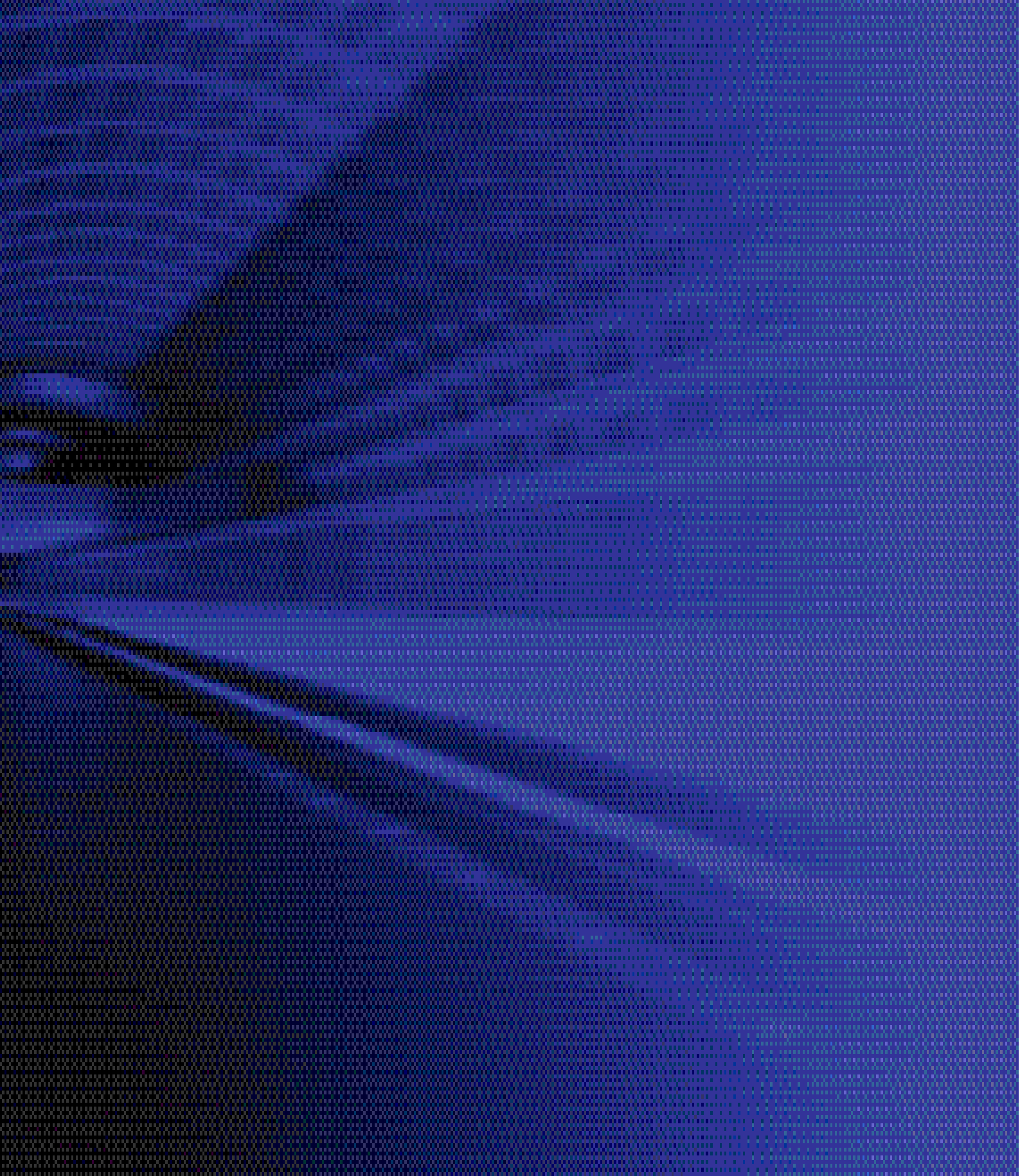
From the server to the desktop, the AMX provides the easiest analogue matrix installation for today's contemporary data centres.

Avocent's reliable, proven technologies offer smarter, simpler server management solutions.



- END-TO-END CAT 5 CONNECTIONS
- MULTI-USER, MULTI-RACK, MULTI-PLATFORM ACCESS
- REDUCED CABLEBULK
- REAL-TIME, HIGH BANDWIDTH VIDEO
- PATENTED ON-SCREEN MANAGEMENT
- CONVENIENT SYSTEM ADMINISTRATION
- EASY INSTALLATION
- HIGHLY SCALABLE

simple
EXPANDABILITY



European Headquarters
Avocent International Limited
Avocent House
Shannon Free Zone
Shannon, Co Clare
Ireland
Tel: + 353 61 471 877
Fax: + 353 61 471 871
www.avocent-europe.com

Avocent International – UK
Building A
Trinity Court
Wokingham Road
Bracknell
Berkshire, RG42 1PL
UK
Tel: +44(0) 1344668 049
Fax: +44(0) 1344668 149

Avocent International – France
Regus Roissy
Bâtiment Le Dôme
1, rue de la Haye – BP 10910
95731 Roissy CDG Cedex
France
Tel: + 33 (0) 1 4919 2644
Fax: + 33 (0) 1 4919 2100
www.avocent.fr

Avocent International – Sweden
Box 10026
SE 121 26
Stockholm – Globen
Stockholm
Sweden
Tel: + 46 (0)855 672 672
Fax: + 46 (0)855 672 671

Avocent International – Netherlands
Brainpark II
Lichtenauerlaan 102-120
3062MERotterdam
The Netherlands
Tel: + 31 10 2045700
Fax: + 31 10 2045867



Avocent, the Avocent logo, The Power of Being There and AMX are trademarks of Avocent Corporation. OSCAR is a registered trademark of Apex Inc. All other marks are the property of their respective owners. Copyright (c) 2002 Avocent Corporation. All rights reserved.

0502-AMX-VER1