

“*The Guilded Ladies Ornaments*”

by Lucy Garvin and Sherry Del Rizzo

originally published in

A Needle Pulling Thread® Magazine

Volume 6 Issue 3 (Fall 2011)

A Needle Pulling Thread Magazine is published quarterly and offers a wonderful variety of seasonal needlework projects including quilting, knitting, crochet, rug hooking, cross-stitch, beading, embroidery, creative sewing, fibre art, and much more...all created by talented and unique Canadian designers. For complete information and to subscribe please visit: www.aneedlepullingthread.com.

This document is for personal non-commercial use only and is protected by copyright. All designs, patterns, information, and photographs contained in this document are copyrighted material owned by their respective creators or owners. Except for your own personal non-commercial use, reproduction or distribution in full or in part is prohibited without the written consent of *A Needle Pulling Thread Magazine*. ©2014 A Needle Pulling Thread®

Guilded Ladies

A shape is a shape is a shape. Sherry and I can start with the same basic shape but we always end up with something that looks completely different. Part of that is due to our personal styles but it's also a function of how we work. Sherry's ornaments are made using hand embroidery techniques, the raw edges are hidden and her ornaments have faces. My ornaments are made using machine techniques, have raw edges and are faceless. To us, the pattern is simply the place to start. How you use that pattern piece (turned or raw edge) is determined by the techniques you use and in turn, the techniques you use influence how the ornament looks in the end.

These ornaments are meant to inspire you and the instructions are simply guidelines. Embellish any of the ornaments with ribbons, buttons, beads or trims. Try different materials for hair. Draw faces, use face charms or buttons or leave them faceless. Create arms from fabric beads or string large beads in a row, or not. Sew rat tail cord along the seam to finish the edges or cover the edges with cord. Attach a hanging loop at the top of the head or attach a hanging ring at the back. Combine techniques or try different combinations of stitches. Let your imagination be your guide.

Both of us started our stitching lives in embroidery guilds, hence our title *Guilded Ladies*. We enjoyed sharing our creations with you and hope that we may have inspired you to try some of your own.

skill level advanced intermediate

glossary of terms

SL = stitch length
 SW = stitch width
 SA = seam allowance
 WS = wrong side
 WST = wrong sides together
 RST = right sides together
 RSO = right sides out

general supplies for Sherry's ornaments

Ornament template
 Fast fade pen for marking
 Fabric scissors, small sharp scissors
 Hand embroidery needles
 Polyester fiberfill
 Stuffing tool
 Turning tool
 Pins
 Small Popsicle stick to insert into neck
 8" x 8" [20 x 20cm] frame to work on
 Thumb tacks to attach work to frame
 Aqua thread for marking outline

general supplies for Lucy's ornaments

Ornament template
 Black pigment ink pen for marking
 Fabric scissors, small sharp scissors
 Polyester fiberfill
 Stuffing tool
 Pins
 Sewing machine & #90/14 universal needle
 #10 sharps hand sewing needle
 #7 darning for stringing on arm beads
 Beading thread in colour to match fabric
 Hair supplies – beads, yarn, bead caps, eyelash yarn or trim
 Tacky glue and a wooden toothpick for making arm beads

general instructions

Before starting, photocopy the template. Use a glue stick to attach the paper template to cardstock and set aside to dry. Cut out the template.

All ornaments are made on 8" x 8" [20 x 20cm] squares of fabric. Mark the centre of the fabric by finger pressing the fold. Centre the template on the fabric to one side of the fold and trace around the template. This ensures that there's enough room on the fabric for the back piece.

Arm beads (optional)

For shaped fabric beads, use the pattern to cut two pieces from leftover fabric. For straight beads, cut 2 – 2" x 1" [5 x 2.5cm] rectangles from leftover fabric. Starting at one end, roll about ¼" [6mm] of the fabric around a round wooden toothpick. Spread a thin layer of tacky glue on the remaining fabric and continue to roll the fabric bead. Remove from the toothpick and set aside to dry.

Edge Finishes

Picot edge is used on many of the ornaments to finish the edges (see *Picot Edge Diagram*).

Other options: Leave the ornament as is, use a corded edge or cover the edge with trim.

Hair Options

Create loops using turkey work stitch and fine tapestry wool. Gather ribbons or create loops with beads. Use picot edge with larger beads or use a bead fringe. Crochet or knit a small strip with eyelash yarn. Glue bits of mohair onto the head. Use bead caps right side or wrong side out and secure them in place with beads. Anything goes.

crazy patchwork



blackwork



silk ribbon



stitched



collage



woven



SHERRY'S ORNAMENTS

My two main needlework passions are embroidery and doll making so it makes me very happy to combine the two. It's a thrill to be able to create the faces using paint or embroidery. Each figure turns out differently and that, for me, is the real joy in making them.

finished measurements

5½" x 2" [14 x 5cm]

blackwork ornament

materials

8" x 8" [20 x 20cm] white 14 count Aida cloth
DMC 310 – black
Small cross stitch needle
Gold metallic thread (Coats or DMC)
5 large gold bead caps
gold & black seed beads
Small piece of black yarn or ribbon (for hanger)

Note: A frame was used while doing embroidery but one can do it without using the frame.

instructions

Preparing the pattern pieces

1. Use the **Blackwork Ornament Template** and a fast fade pen to draw the outline of the ornament on left side of the Aida cloth.
2. Place the fabric on the pattern. Use a light box or a window and the fast fade pen to draw all the lines for each section of the blackwork patterns.
3. Use a single strand of aqua thread and a running stitch, go over all the lines.
4. Attach fabric to frame.
5. Blackwork stitches are mostly done in backstitch. Referring to the **Blackwork Ornament Template**, use a single strand of black to fill in each embroidered section. Stitch the face.
6. When all stitching is complete, fold the fabric RST. After placing the hanger (black yarn or ribbon) at the top of the head between the right sides with the loop pointing down, stitch the outline of the ornament leaving an opening on one side to turn RSO.
7. Cut out leaving a ¼" [6mm] SA and clip curves. Turn the ornament and stuff the head.
8. Place a Popsicle stick in the neck area and place stuffing firmly around it.
9. Stuff the rest of the body, and then sew up opening.
10. Refer to the photo and stitch bead caps to the head for hair.

11. Start at the shoulders, use gold and black seed beads to stitch a beaded picot edge all around the edge of the ornament shape.

crazy patchwork ornament materials

8" x 8" [20 x 20cm] yellow (base) fabric
4 scraps of fabric in red, brown, aqua and purple
small scrap of white fabric plus small scrap of quilt batting for face
Metallic threads in gold, red and aqua
Embroidery needle with large eye
Small piece of gold trim
Gold metallic ribbon for hanger
Gold seed beads
Pigma® pens .005 in brown, black and red
Rose pencil
White acrylic paint
Wooden skewer
Yarn or roving for hair

instructions

1. Use the **Crazy Quilt Ornament Template** and a fast fade pen for marking and draw the outline of the ornament on left side of the yellow fabric.
2. With the sewing machine, create the patchwork shapes sewing down the small pieces of fabric following the **Crazy Quilt Ornament Template**. When fabrics are stitched in place, mount on frame.
3. Add embroidery stitches as desired and embellish with gold trim. The stitches used for this sample are buttonhole, stem outline stitch, feather, colonial knot, cross, lazy daisy and chain stitch.
4. When all stitching is complete, fold the stitched area over onto the other side of the fabric, RST. After placing the hanger (gold ribbon) at the top of the head between the right sides with the loop pointing down, stitch the outline of the ornament leaving an opening on one side to turn RSO.
5. Cut out leaving a ¼" [6mm] SA and clip curves. Turn the ornament and stuff the head.
6. Place a Popsicle stick in the neck area and place stuffing firmly around it. Stuff the rest of the body, and then sew up opening.
7. Start at the shoulders, use gold seed beads to stitch a beaded picot edge all around the edge of the ornament shape.

Face

1. Trace the **Ornament Head** pattern onto the WS of a piece of doubled white fabric.
2. Place fabric onto a piece of quilt batting.
3. Sew over traced face outline leaving open at top.
4. Cut out, leaving a ⅛" [3mm] SA. Clip curves and turn RSO.
5. Referring to the photos, draw features on face using a fast fade pen. When satisfied with features, trace over all features with brown Pigma® pen. Outline the eye shape and pupils in black. Use a wooden skewer to paint the whites of the eyes with white acrylic paint. Add a white dot to each eye. Use coloured pencil to add colour to cheeks.
6. Using yarn or roving for hair, arrange on head and sew or glue in place.



silk ribbon ornament materials

8" x 8" [20 x 20cm] square of gold coloured background fabric
Small scrap of white fabric plus small scrap of quilt batting for face
Embroidery floss in medium green
¼" [6mm] purple and olive silk ribbon
⅜" [8mm] red silk ribbon
⅜" [8mm] brown, red and yellow chiffon ribbons
Chenille needle with eye large enough to accommodate the width of ribbon used
Gold metallic ribbon for hanger
Gold seed beads
Pigma® pens .005 in black, brown and red
Rose pencil
White acrylic paint
Wooden skewer

instructions

1. Outline **Silk Ribbon Ornament Design** with fast fade pen on left side of background fabric.
2. Place the fabric over the pattern. Use a light box or a window and the fast fade pen to draw the floral patterns on the fabric. Mount fabric on frame.

Photo this page courtesy of Sherry Del Rizzo.

- Use leaf stitch to embroider all leaf shapes with 2 strands of embroidery floss in medium green.
- Stitch 3 large spider web roses using gold metallic threads and $\frac{3}{16}$ " [7mm] red silk ribbon. Add gathered ribbon flowers in chiffon ribbons (gather each ribbon with thread along one side) using brown, red and yellow. Next add flowers in 4mm silk ribbon using colonial knots.
- If desired, add some gold colonial knots as well. The small branches are stitched using a single strand of green embroidery floss in feather stitch.

Note: *the ribbon sizes are examples of what you can use as silk ribbon is not as readily available anymore.*

- When all stitching is complete, fold the stitched area over onto the other side of the fabric, RST. After placing the hanger (gold ribbon) at the top of the head between the right sides with the loop pointing down, stitch the outline of the ornament leaving an opening on one side to turn RSO.
- Cut out leaving a $\frac{1}{4}$ " [6mm] SA and clip curves. Turn the ornament and stuff the head.
- Place a Popsicle stick in the neck area and place stuffing firmly around it. Stuff the rest of the body, and then sew up opening.
- Starting at the shoulders, use gold seed beads to stitch a beaded picot edge all around the edge of the ornament shape.

Face

Follow the same instructions as the Crazy Patchwork Ornament to create the face.

Hair

Cover the head with pieces of gathered ribbon, which is stitched in place.

LUCY'S ORNAMENTS

Sitting in front of a sewing machine and stitching away is my idea of bliss. When making ornaments, I like to first create interesting backgrounds on which to stitch. By creating a unique background, I can ensure that no two ornaments will ever be alike. The backgrounds also influence the choice of colours and the amount of stitching I use on the fabric.

finished measurements

$6\frac{1}{2}$ " x $2\frac{1}{2}$ " [16.5 x 6.5cm]

collage ornament

materials

8" [20.5cm] square of muslin
 9" [23cm] square of orange felt
 Scraps of yellow and orange tissue paper (plain or printed)
 Plastic placement or plastic sheet
 Matte gel medium
 1" [2.5cm] foam brush
 Rayon and cotton thread in colours to work with the tissue papers
 Small buttons
 Eyelash yarn & crochet hook
 Optional: small fabric or ribbon flowers

instructions

- Working on the placemat, cover the fabric with a thin, even layer of gel medium.
- Tear the tissue paper into small pieces and lay onto the wet fabric.
- Cover the tissue paper with another layer of gel medium and set aside to dry.
- Place the collaged fabric onto the felt and pin the corners. Set the machine to a straight stitch (SL 3.0). Sew all over the fabric in wavy lines. Switch to another colour and fill in areas with more stitching.
- Cut the fabric in half (2 – 4" x 8" [10 x 20cm] pieces) and place the fabric WST.
- Place the template onto the fabric and trace around the edge.
- Set machine to a straight stitch (SL 2.0) and sew along the outline, leaving open where indicated. To reinforce the seam, sew along the stitched line again. For ease of sewing, leave the SA next to the opening as $\frac{1}{4}$ " [6mm] but trim the rest down to $\frac{1}{8}$ " [3mm]. Lightly stuff the body, then machine sew the opening closed. Trim the excess fabric to $\frac{1}{8}$ " [3mm]. Optional: add fabric flowers or buttons as embellishment.
- Add your choice of hair. I crocheted a 2" [5cm] strip of eyelash yarn for hair.
- From leftover collaged fabric, cut a 4" x 1" [10 x 2.5cm] rectangle. Fold the fabric in half lengthwise and sew next to the cut edge.
- Cut the strip in half and tack each strip in place at the shoulders.
- Sew small buttons to the hands and shoulders to hide the raw edges.

stitched ornament

materials

8" [20.5cm] square of rust cotton
 9" [23cm] square of rust felt
 Cotton thread in colour to match fabric
 Gold acrylic paint & foam brush
 2 shaped fabric beads, bead caps and seed beads

instructions

- Trace the **Ornament Body Template** onto the fabric twice, making sure to leave about 1" [2.5cm] between each piece. Lay the fabric onto the felt and pin the layers together.
- Set the machine to straight stitch (SL 2.0) and sew along the outlines. Remove pins.
- Fill in the body shapes with stitching. Masses of straight lines can be very effective or experiment with a few stitches on your machine. Try altering the stitch length and width of decorative stitches to see what happens.

Tip: *Keep the more densely formed stitches in the centre and the looser stitches along the edges. This will make it easier to sew the front and back together later on.*

- Cut out the bodies on the sewn outline and lay them WST. If necessary, trim any excess fabric to match up the two sides. Set machine to zigzag (SW 4.0, SL 1.0). Sew around the edges, leaving open where indicated. Lightly stuff the body and sew the opening closed.
- To string an arm, secure a doubled beading thread at the shoulder. String a bead cap, the fabric bead, a bead cap and 5 seed beads onto the needle. Bring the needle back through bead cap, fabric bead and bead cap, then secure the thread to the shoulder. Add your choice of hair.
- Lightly paint the entire piece with a thin layer of gold paint, allowing some of the background fabric to show through. Set aside to dry.
- Optional: Use a wash of brown acrylic ink to emphasize the texture.

woven ornament

materials


2 – 8" [20.5cm] squares of fabric in similar colours (batiks work well)
 8" [20.5cm] square of lightweight fusible interfacing (any kind)
 7" [18cm] square of Fast-2-Fuse

Matching or complementary cotton and rayon thread
 Seed beads and sequins
 2 straight fabric beads
 Parchment paper

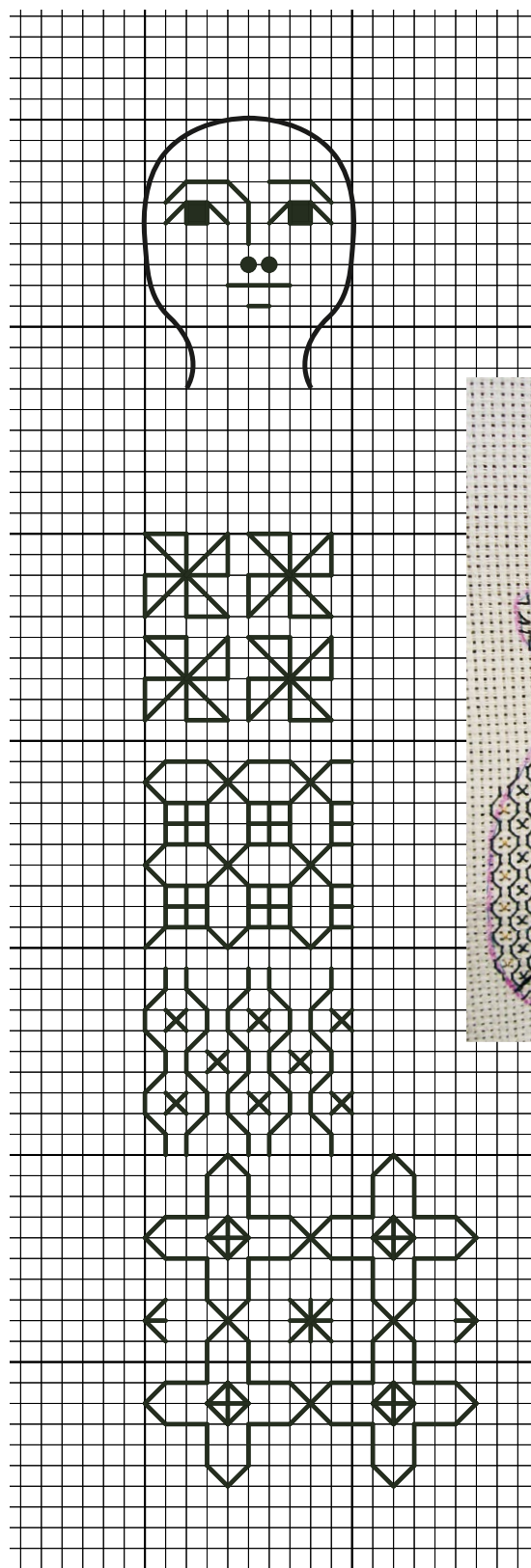
instructions

1. Cut or tear fabric into ½" [12mm] strips.
2. On a padded ironing board, place the parchment paper, then the fusible interfacing (glue side facing up). Choose one fabric to become the warp. Place the strips on the interfacing and pin each strip at the top edge. With a strip from the second fabric, weave over and under the warp. For the next row, weave a strip under and over the warp. Repeat these two rows to the end. **Note:** *There will be two strips left over.*
3. Remove the pins.
4. Follow the manufacturer's instructions to fuse the fabric to the interfacing. Using your choice of thread, stitch in the ditch, and then add diagonal lines of stitching.
5. Trace two bodies (**Ornament Body Template**) onto the wrong (interfacing) side, making sure to leave at least 1" [2.5cm] between them. Cut out the bodies, cutting a generous ¼" [6mm] away from the outline.
6. On the Fast-2-Fuse, trace two bodies (**Ornament Body Template**). Cut out and place on the parchment paper. Place the woven fabric bodies on top, making sure to align the Fast-2-Fuse bodies within the outline. Use a hot iron to tack the fabric in place. Clip all corners. Wrap the SA to the back and tack down all the raw edges.
7. Sew seed beads and sequins onto the surface of the fabric. Add as many or as few beads as you like. All embellishment is done before sewing the front and back together.
8. Place a front and back WST and whip stitch the edges together, leaving open where indicated. Stuff the body and sew the opening closed. Hide the seam with a beaded picot edge.

Create two straight fabric beads:

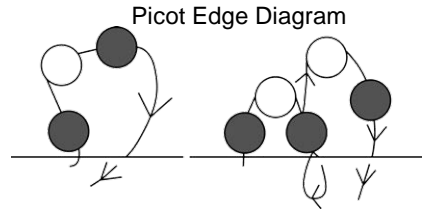
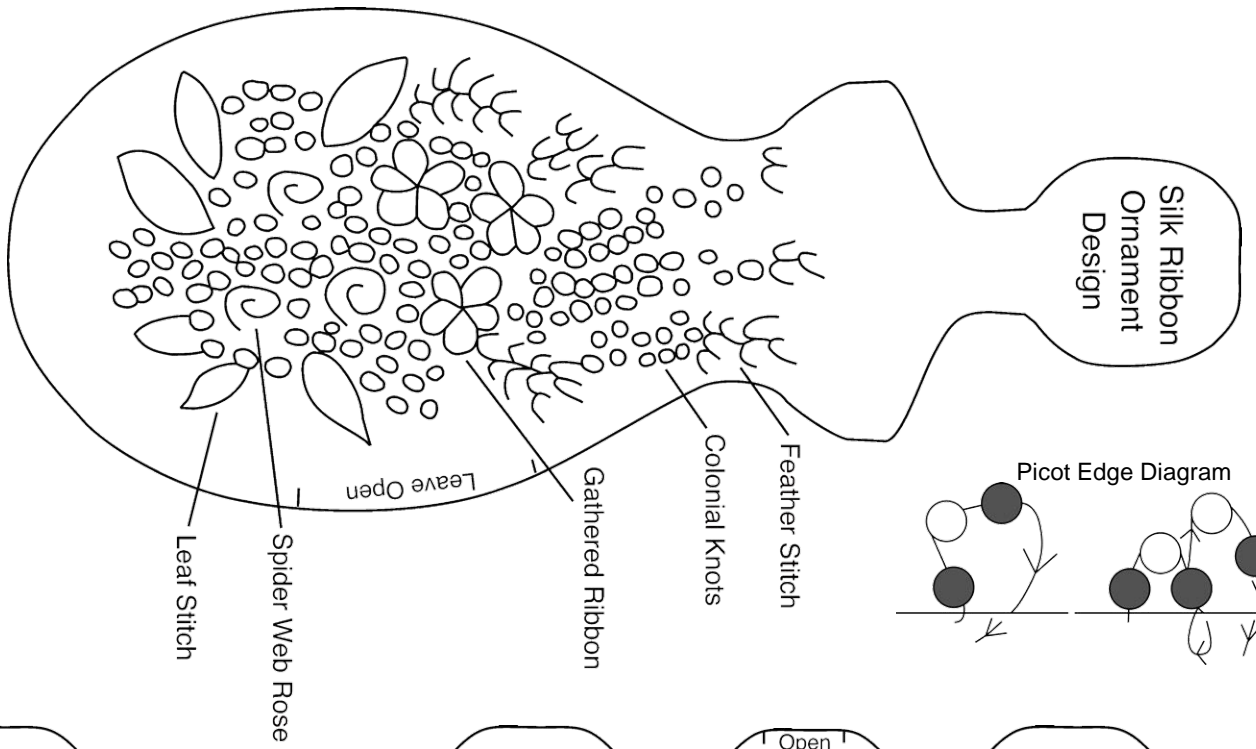
1. Tie a knot in one end of each leftover strip.
2. Secure a doubled thread to the cut end of the strip and thread the needle through the arm bead. Pull the thread, easing the fabric strip through the bead, and then sliding the bead down to the knot.
3. Sew a running stitch down the centre of the fabric to the bead and pull to gather.
4. Sew the gathered fabric to the shoulder.
5. Finish with your choice of hair. Loops of seed beads were used in the sample. 

Blackwork Chart



Work in progress

Shaped Fabric Bead
Cut 2



INCREASE ALL to 106%
for ACTUAL SIZES

