



The St. Francis LEGACY

A PUBLICATION OF ST. FRANCIS HEALTHCARE SYSTEM OF HAWAII Vol. 4, No. I Fall 2011

Franciscan Vistas Ewa Addresses Wellness and Affordable Housing for Hawaii's Seniors



From left, Sister Regina Mary Jenkins, SS.CC., Stanford Carr, Governor Neil Abercrombie, Bishop Larry Silva, Sister Norise Kaiser, Sister Grace Anne Dillenschneider, Sister Agnelle Ching, Sister William Marie Eleniki, and Sister Francis Regis Hadano.

Franciscan Vistas Ewa, a new, \$40 million senior living community in historic Ewa Villages, celebrated its grand opening on July 12, drawing praise from community and government leaders.

The 149-unit community addresses two of the greatest challenges facing Hawaii's rapidly growing older adult population: affordable housing and access to health and wellness services. It provides an affordable alternative for older adults living on limited, fixed incomes.

Construction began in January 2010 and the sixth and final apartment building was completed in May 2011.

"With 128 years of health care experience in Hawaii, the Franciscan Sisters recognized the need for a healthy community that fosters an active lifestyle to help people remain independent for as long as possible," said **Pamela Witty-Oakland**, Vice President, Asset Management, St. Francis Healthcare System.

Unlike any other affordable independent living community, Franciscan Vistas Ewa has a wellness component as an added benefit to encourage seniors to stay active and healthy through the promotion of socialization.

Fitness and educational programs are offered to assist residents with sustaining better health so that they may prolong their stay in their own home. Generally, such amenities are available in independent living communities for those who are more affluent.

Along with Pamela Witty-Oakland, **Sister Agnelle Ching**, OSF, Chief Executive Officer of St. Francis Healthcare System, and **Sister William Marie Eleniki**, OSF, President of the St. Francis Residential Care Community Board, welcomed about 250 guests to the event.

Among the special VIP guests participating in the celebration were: **Governor Neil Abercrombie**; **Sister Grace Anne Dillenschneider**, OSF, Chair, St. Francis Healthcare System of Hawaii Board, who flew in from Syracuse, New York; and **Stanford Carr**, President of Stanford Carr Development LLC, who served as the development consultant for all phases of real estate development, including securing land use approvals, permits and affordable housing financing. The residents who live at Franciscan Vistas Ewa were also invited to be a part of the grand opening ceremony.



Following a blessing by Bishop Clarence "Larry" Silva of the Diocese of Honolulu, Sister Agnelle Ching, OSF, Chief Executive Officer of SFHS, and Governor Neil Abercrombie joined him in untying the maile lei to symbolize the official opening of Franciscan Vistas Ewa.

Parade of Homes Award of Excellence

Franciscan Vistas Ewa received an Award of Excellence in the Senior Living category of the 55th Annual BIA Parade of Homes in October. Each year, the Building Industry Association of Hawaii calls for entries that showcase new homes in Hawaii that feature the latest trends, technology and design innovations in residential construction. The 2011 theme was "Sustainable Lifestyle... Sustainable Homes." For more information about Franciscan Vistas Ewa, call 681-4000.

Lay Board Members for St. Francis

St. Francis Healthcare System recently welcomed lay community leaders to serve on its board of directors. The inclusion of lay leaders allows St. Francis to benefit from diverse perspectives and expertise, while remaining committed to the Ethical and Religious Directives for Catholic Health Care Services, developed by the National Conference of Catholic Bishops. Previously, the board was composed exclusively of Sisters of St. Francis and religious leaders. There are three new board members:

Catherine Ching has extensive experience as a social worker in Honolulu, Boston and Hong Kong. Since 2006, she has been a Student Assistance Program Counselor for Mid-Pacific Institute for middle and high school students. Prior to this, she was a school-based counselor with St. John's Counseling Service in Hong Kong. She is a trustee of the Clarence T.C. Ching Foundation and a member of the National Association of Social Workers.

Richard E. Meiers served as President and Chief Executive Officer of the Healthcare Association of Hawaii and retired in August 2009 after nearly 20 years. He has provided health care knowledge, advice and leadership to numerous business, community and government task forces and boards of healthcare associations. His healthcare career also included serving as Chief of Staff at Tripler Army Medical Center.

Kathleen "Kitty" Sullivan Wo is an owner and director of the Sullivan Family of Companies, which includes Foodland Supermarket Ltd., Food Pantry, and several other primarily food-related retail enterprises for the past 20 years. Kitty served as board chair for St. Francis Healthcare Foundation of Hawaii and currently holds leadership positions on the boards of numerous other nonprofit community organizations.

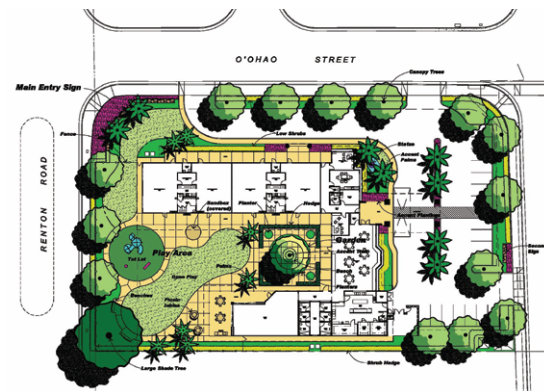
Plans for St. Francis Intergenerational Center Now Under Way

Plans are now under way to construct the St. Francis Intergenerational Center in West Oahu.

The new, 15,000-sq.-ft. facility will be located on 1.25 acres in Ewa Villages, across from Franciscan Vistas Ewa, St. Francis' senior independent living community, just five minutes from downtown Kapolei. The project is targeted to open in Fall 2012.

The center will serve families in Ewa and Kapolei, the fastest growing regions on Oahu. It will accommodate up to 42 adult participants and have a Montessori-based pre-kindergarten program for up to 96 children ages 2 3/4 to 6 years old daily. As with Franciscan Adult Day Center in Manoa, both the older adults and children will benefit from the interaction with each other.

The St. Francis Intergenerational Center fits into the City & County's consolidated plan, which has identified that elderly services and childcare services are priority needs.



Buy a Brick: Support the St. Francis Intergenerational Center

You are invited to help contribute to building the St. Francis Intergenerational Center by purchasing a commemorative, engraved brick for \$1,000.

The bricks, which will be prominently displayed in the courtyard of the new center, can be engraved with messages to honor your children, parents, grandparents or an organization.

For more information, call **Cheryl Tamura**, St. Francis Healthcare Foundation, at 547-8032 or ctamura@stfrancishawaii.org.

SOLD OUT! "Cirque De Lima," A Benefit for the St. Francis Intergenerational Center

"Cirque De Lima: A Tribute to Joy, Laughter and Frank De Lima," a Portuguese-themed fundraiser to benefit the St. Francis Intergenerational Center, was held at the Ala Moana Hotel, Hibiscus Room. It was a sold out event and netted nearly \$100,000.

The Most Reverend Larry Silva, Bishop of the Diocese of Honolulu, and **John Henry Felix**, HMAA Chairman, President and CEO, served as honorary co-chairs of the event. If you missed the event, but would like to make a contribution, contact **Cheryl Tamura** at St. Francis Healthcare Foundation at 547-8032 or ctamura@stfrancishawaii.org.



RENTON ROAD ELEVATION



MIULA STREET ELEVATION



O'OHAO STREET ELEVATION



10th Annual Golf Healthy Challenge Tees Off to Success

Thanks to the generosity of many in the community, St. Francis Healthcare Foundation's 10th annual Golf Healthy Challenge golf tournament, held at the Kapolei Golf Course on May 12 teed off to success, raising about \$75,000 in net proceeds. The tournament attracted a total of 186 golfers on 62 teams.

Mahalo to Title Sponsor **McCorriston Miller Mukai MacKinnon, LLP**; Eagle Sponsor **Miyawaki Foundation & the Cincinnati Bengals**; and Birdie Sponsors **Group 70 International, James Campbell Company LLC, Liberty Dialysis-Hawaii, and R.M. Towill Corporation.**

Special thanks to **Paul Oshita**, Tournament Honorary Chair, who first began helping with the St. Francis golf tournaments 29 years ago at the request of **Maurice Sullivan**,

Co-chairs **David D.W. Chung** and **Glenn Sueyoshi** and members of the tournament committee.

Hope to see you at next year's golf tournament on May 10 at Kapolei Golf Course!



Title Sponsor

McCorriston Miller Mukai
MacKinnon, LLP

Eagle Sponsor

Miyawaki Foundation & the
Cincinnati Bengals

Birdie Sponsors

Group 70 International
James Campbell Company, LLC
Liberty Dialysis - Hawaii, LLC
R.M. Towill Corporation

Tee Sponsors

A M Construction, Inc.
Alakea Design Group
Alternative Care Services, Inc.
American Savings Bank
AMPCO System Parking
Aon Hewitt, Inc.
Appraise It! Hawaii
Atalanta Sosnoff Capital, LLC
Christian Brothers Investment
Services, Inc.
David & Valerie Chung
CKM Architects, LLC
Commercial Sheet Metal
Cox Media Group Honolulu
Darryl M. Taira, AAL, ALC/Pacific
Sports Management
Electricians, Inc.
Ernst & Young
eWorld Enterprise Solutions
First Hawaiian Bank
Hansen Distribution Group
Hawaii Bio-Waste System, Inc.
Hawaii Medical Service Association
Honolulu Star-Advertiser

H.O.P.E. Project ~ Dr. Steven J.

Berman
Insurance Solutions
Invision Imaging
James Lumeng, MD
KMH, LLP
Dave Kowalski, Pacific Rim Bank
Medical Specialists of Hawaii, LLC
Monarch Insurance Services, Inc.
PAMCAH-UA Local 675
Cooperation Fund
PDC Systems
Royal Contracting Co., Ltd.
SH Consulting
SSI Investment Management
Stanford Carr Development, LLC
ThyssenKrupp Elevator Corporation
United Laundry Services, Inc.
West Coast Construction
Y. Hata Co., Ltd.

Team Sponsors

Al Souza Investment Companies
AMPCO System Parking
Clinical Laboratories of Hawaii
Coldwell Banker
Dave Leong
Leslie's Gift Shop
Makana Partners, LLC
Pankow Builders
Tiwanak Associates Hawaii, LLC

Shoot Out Sponsors

Edward Enterprises, Inc.
ING Financial Services
Linda A. Lee
Monarch Insurance Services, Inc.
Paul S. Oshita & Dave S. Oshita

Patrons

Stephanie K. Asato
Sister Agnelle Ching, OSF
Century Computers, Inc.
Paul De Mare, MD
Environet, Inc.
Grubb & Ellis/CBI, Inc.
Foodland Super Market, Ltd.
Geolabs, Inc.
Hawaiian Telcom
James Kometani, Inc. Realtors
KAI Hawaii
King Windward Nissan
Kobayashi Development
Love & Kirschenbaum
Miyabara Associates, LLC
N & K CPAs, Inc.
Painters Local Union 1791- LMCF
Glenn Pang, MD
The Queen's Medical Center
Tomco Corp.
Xerox Hawaii
Elaine Yamashita

Benefactors

Al Souza Investment Companies
Aloha Shoyu
Alternative Care Services, Inc.
Anheuser Busch Sales of Hawaii,
Inc.
AON Hewitt
Armstrong Produce
Stephanie K. Asato
Bank of Hawaii
Benefit Services of Hawaii Inc.
Big Island Candies
Cardinal Services, Ltd.
Central Pacific Bank
Chase Sales & Distribution, Inc.

CKM Architects, LLC
Clear Channel Radio
Coca-Cola Bottling Co.
Consolidated Amusement Co., Ltd.
Creative Design Hawaii
CVS Caremark
Dave & Busters, Inc.
Dole Food Company Hawaii
Eight-Point Distributors, Inc.
Food Solutions International
Frito-Lay of Hawaii
Gentry Homes
GoKo Restaurant Enterprises, LLC
Gordon Biersch
Halekulani
Hansen Distribution
Hawaii Kai Golf Course
Hawaii Prince Resorts
Hawaiian Electric Company, Inc.
Hawaiian Host
Honolulu Country Club
Hopaco/Office Max
IKON Office Solutions
Innovative Design and Sales
InVision Imaging
Island Air
Ito-En (USA) Inc.
James Campbell Company, LLC
JW Marriott Ihilani Resort and Spa
Kaanapali Beach Hotel
Kakaako Kitchen
Kapolei Golf Course
KC Waffle Dog
Kevin J. Mott, MD
KHCM - FM 97.5
King Kamehameha's Kona Beach
Hotel
Kona Brewing Company
Ko'olina - PGA Head Professional

Kraft General Foods
Market City Shopping Center
Meadow Gold Dairies, Inc.
Menehune Mac
Miyawaki Foundation and the
Cincinnati Bengals
Olomana Golf Course
Pacific Beach Hotel
Pepsi Cola Bottling Co.
Pharmacare
Poke Stop
Polynesian Cultural Center
Quality Travel
Sansei Seafood Restaurant & Sushi
Bar & DK Steakhouse
Securitas
SH Consulting, LLC
Side Street Inn
Sodexo
Starwood Hotels and Resorts -
Hawaii
Tesoro Hawaii Corporation
The Cheesecake Factory
Restaurants, Inc.
The Kahala
The Paradise Yellowbook
The Willows
Tiki's Grill and Bar
Y Hata & Co.
Zippys, Inc.



St. Francis Hospice Instrumental in Policy Change to Benefit UHA Members

Upcoming Events

Friday, December 2, 2011, 6 p.m.

“Light Up a Memory”

St. Francis Hospice kicks off the holiday season with its annual tree lighting ceremony. Honor the memory of family and friends during the Christmas season with a laminated star placed on one of the Christmas trees at The Sister Maureen Keleher Center, 24 Puiwa Road, Nuuanu. Refreshments and entertainment. Information: 595-7566

Friday, December 9, 2011, 6 p.m.

“Light Up a Memory”

Annual tree lighting festivities at The Maurice J. Sullivan Family Hospice Center, 91-2127 Fort Weaver Road, Ewa Beach. Family and friends are invited to honor a loved one's memory with a laminated star placed on one of the Christmas trees. Refreshments and entertainment. Information: 595-7566

Friday, February 24, 2012, 8 a.m.-5 p.m.

“Grief, Hope, Joy... & Beyond”

Second grief conference for healthcare professionals, social workers, counselors and laypersons, presented by St. Francis Hospice Bereavement Services. International and local speakers. Ko'olau Ballrooms and Conference in Kaneohe, 45-550 Kionaole Road Kaneohe. Early bird registration before Jan. 24, 2012: Online: \$99; Mail-in: \$105. Registration after Jan. 24: Online: \$130; Mail-in: \$135. For more details, visit www.stfrancishawaii.org. Information: Call Luisa C.O. Wyant at 547-8147 or email LWyant@stfrancishawaii.org.

University Health Alliance (UHA) became the first health insurance provider in the nation to offer hospice care benefits while also covering curative treatment. This major breakthrough was the result of input from St. Francis Hospice and Hospice Hawaii.

This means terminally ill patients no longer have to choose between curative treatments and hospice care, and can now receive both at the same time. Curative treatments include radiation, chemotherapy, or surgical procedures. Previously, hospice care was only available for those who declined active treatment of illnesses, and required a physician's certification of the patient's condition to confirm the patient had a life

expectancy of six months or fewer.

“UHA's groundbreaking effort in medical plan design offers Hawaii's patients with serious illness the best of both worlds: the opportunity to continue receiving curative or disease focused treatments while also accessing expert symptom management and holistic care provided by hospice,” said **Anna Loengard, MD**, Chief Medical Officer for St. Francis Healthcare System. “Physicians will no longer be required to make difficult judgments about their patients' prognosis before referring them to St. Francis Hospice. I hope health insurance plans across the nation will follow UHA's lead.”

Dr. Anna Loengard Named Chief Medical Officer

Dr. Anna Loengard, who was named one of Honolulu's Best Doctors in both geriatrics and internal medicine, was recently promoted to Chief Medical Officer of St. Francis Healthcare System.

In her role as Chief Medical Officer, Dr. Loengard provides clinical leadership for St. Francis Hospice, St. Francis Home Care Services, and St. Francis Palliative Care. She had previously been Co-Medical Director of

St. Francis Hospice, a position she had held since November 2009.

Dr. Loengard is board certified in palliative medicine, geriatrics and internal medicine, and is an assistant clinical professor at the University of Hawaii John A. Burns School of Medicine.



Congratulations to our HAH Award Recipients!

St. Francis Healthcare System is blessed with great people. The Healthcare Association of Hawaii recognizes outstanding healthcare professionals in the community each year, and this year, two exemplary healthcare professionals from St. Francis were honored for their outstanding contributions to patients, families and the community during the Healthcare Association of Hawaii's 2011 Awards and Scholarship Dinner at the Ala Moana Hotel in May.

Corinne Suzuka, Executive Director, who oversees home care and home hospice, was the recipient of the Distinguished Service Award – Home Care and Hospice, and

Felicia Marquez-Wong, Bereavement Services Manager for St. Francis Hospice, was the recipient of the Professional with Heart Award – Home Care/Hospice. Here, **George Greene**, Esq., president and CEO of the Healthcare Association of Hawaii, presents Corinne and Felicia with their well-deserved awards.



The Legacy of Caring Continues Because of You.....

Mahalo to all of our generous supporters! The St. Francis Healthcare Foundation received the following donations from December 1, 2010 to May 31, 2011. Every effort has been made to ensure an accurate listing of donors. Please call (808) 547-8031 to report errors or omissions. Thank you.

- In Honor Of Valerie E. Santiago*
Sarah Santiago
- In Honor Of Ayako M. Takase*
Carol M. Robinson
Frank N. Santos III
- In Memory Of David Alices J. M. Hanashiro*
- In Memory Of Candida N. Ariola*
Red Land High School
- In Memory Of Claire Y. Auyong*
Charles F. Arnold
Clifford E. Jones
Rise A. Justice
Henry Parker
George Price and Family
- In Memory Of Fred W. Ballard*
Mildred Ai-Chang
Jackie D. Craig
Kathryn M. Ingle
Ingrid Marie Klithau
Michael D.K. Nakata
Roberta A. Sullivan
- In Memory Of Mary Botelho*
Robert D. Hipperson
- In Memory Of Kelly Buffalo*
Anne Nishihara
- In Memory Of Carlos R. Buhk*
Diane M. Daniels
Diane Davi Farley
Randall J. Hess
Nancy L. Johnson
Allan N. Rechap
Trudy Schoenfeld
- In Memory Of Yee-Man Chan*
Judy Hui
Linette Tam
Maisei Tam
Linda Nakagawa Johnston
Trust
- In Memory Of Toyoichi Chikazawa*
Amy L. Kawamura
- In Memory Of Yoshiko Chinen*
Cindy K. Okuda
- In Memory Of Shao-Chia Chou*
Steven Rubin
- In Memory Of Kwai L. Choy*
Joanna Lau Sullivan
- In Memory Of Walter S. Christian*
Gene Simpson
- In Memory Of Herbert S.C. Chun*
Pamela L. Chun
- In Memory Of Sharon Darrow*
David Glenn Bettencourt
James M. Bugbee
Gary Cook
Stephanie Darrow
William Darrow
Gerald Eldridge
Carol Ann Gunn
Theodore Lee Herbert
Francis A. Holmes
Diana E. Hood
David R. Hunt
Pamela K. Iwanaga
Sharon K. James
Rebecca Kelly
George C. Meyer
Harold R. Schatz
Jack Schmidt Jr.
Mach D. Selby
Bonnie Stevens
Diane I. Warncke
Janie W. Wolf
- In Memory Of Sharon Haranda*
Edward Y.C. Chun
Roberta M. Cosco
Gail Greenley
Shirley Grossi
Steven Hurlbut
Gary G. Mayer
Roxanne M. Okazaki
Yukiko Sato
Audrey C. Suga-Nakagawa
Jasen H. Takei
Jamie Ueoka
Charlene S.W. Young
Care 1st Health Plan
- In Memory Of Cynthia J. Haranda*
Sandra Higuchi
- In Memory Of Fumiko Hata*
Eleaine Kawada
- In Memory Of Donald B. Heverly*
Dorothy M. Heverly
- In Memory Of Gilbert M. Hayashi*
Arthur Kaneshiro
- In Memory Of Yuriko Higa*
Betty M. Kurisu
- In Memory Of Clara K. Higashihara*
Tyler Pottenger
- In Memory Of Sakuma Hitoshi*
Lynn Anne Mulrooney
- In Memory Of Gil Hobbs*
Deborah K. Hobbs
- In Memory Of Curtis P. laukea*
Janette laukea
- In Memory Of Esther Y. Ishikawa*
Deborah Lacombe
- In Memory Of Elwyn A. Kahahane*
Michlynn Kahahane
Winona Kahahane
- In Memory Of Chieko F. Kato*
Karen S. Tanoue
- In Memory Of Edna Kawamura*
John O. Fukunaga
- In Memory Of David Y. Kimura*
Ethel N. Hasegawa
Kay T. Hirasuna
Susan S. Kurisu
- In Memory Of Shigeji Kobayashi*
Richard S. Kobayashi
- In Memory Of Nellie M. Kosaki*
Waikiki Beach Marriott
Resort & Spa
- In Memory Of Patrick T. Lai*
Michael R. Walsh
- In Memory Of Bea A. Lamm*
Jane Beauchemin
- In Memory Of Theresa Lomonte*
Georgia L. Ferreira
- In Memory Of Mary E. Landolt*
John C. Landolt
- In Memory Of Gail M. Lau*
Johnson K.C. Lau
- In Memory Of Maize G. Lum*
Clarice Javier
James W.S. Lum
Colin Nakamura
- In Memory Of Joyce Matsuoka*
Donna Akaji Annoura
Michelle M. Josue
Eleanor O. Masuda
Betty S. Miyahira
Dawn M. Moroye
James Wakimura
Susan S. Wong
Fred T. Yoshinaga
- In Memory Of Yolanda C. Mc Angus*
Marilyn A. Moku
- In Memory Of Kay K. Mikami*
George Mikami
- In Memory Of Dane L. Miller*
Barbara E. Briley
Bernie Bryant
Andy Cho
Rai Saint Chu
David D.W. Chung
Cory Heith
Nancy E. Henderson
Keith G. Kim
Bennett Miller
Sammy Ng
Tommie Tishler
Rosemary Youn
Halla Huhm Foundation
- In Memory Of Kenneth S. Minato*
Gloria Chock Dung
Kelly-Ann K. Fukuhara
Roy J. Miyahira
Joyce H. Nishimura
- In Memory Of Satoshi Mitsuda*
Mary M. Mitsuda
- In Memory Of Thomas T. Mizuno*
W.T. Saiki
- In Memory Of Teruko U. Montgomery*
Ronald S. Montgomery
- In Memory Of June U. Morioka*
Velma C. Akinaka
Kevin K.W. Chang
Catherine H.Q. Ching
Francis C.H. Momi Ching
Merle K.H. Chong
Doris Y. Chun
Eunice M. De Mello
V. Lois Denning
- Betsy Hata
Lisa Ng Kato
Teri E. Marcus
Brian Y. Morioka
Carrie s. Mukaida
Joanne Keiko Nakamura
Diane K. Owyang
Karen Taniyama
Muriel K.J. Wong
New York State Wide Senior
Action
- In Memory Of Rebecca K. Morrison*
Robert Holt
- In Memory Of Wallace T. Nagao*
Carleen Kawamoto
Haruyoshi Kaya
- In Memory Of Yoshie Nakano*
Yukino Endo
Harriet Hamada
Hideo Hamada
Joyce N. Hamada
Karen Hamada
Myrtle C. Hara
Naomi Hayakawa
Nanette E. Hiraoka
Isoe Isemoto
Kay Isemoto
Helen S. Izumo
Joyce T. Kawamura
Wendy Y. Kishimoto
Wayne M. Kodani
James N. Kuritani
Gerald N. Lee
Margaret Maeda
Christine Matsuno
Robert T. Mento
Wayne S. Miyaji
Fujiko Morita
Mildred C. Nakanishi
Ronald K. Nakashima
Takako Nekoba
Norma B. Nishimoto
Helene Y. Okino
Akira Omonaka
Michael R. Sakamoto
Hisaichi Shibata
Mieko Soken
Helene M. Takushi
Beverly S. Tomita
Sylvia A. Yamaguchi
Yurko Yamauchi
Marie F. Matsumura Trust
Nonomu Hongwanji Fujinkai
- In Memory Of Hisao Nakamura*
Carolyn Nakamura
- In Memory Of Osamu Nakamura*
Walt Y. Hiranaka
- In Memory Of Kiku Nakashima*
Ian Riu Nakashima
- In Memory Of Kevin Nutt*
Mildred Ai-Chang
Annette K.F. Dug
Annie Finby
Kevin Isa
Corinne Ito
Kimberly Magbual
M. P. Matsui
- In Memory Of Florence O'Binger*
Gerald C. Vierra
- In Memory Of Carol F. Odo*
Janet C. Swift
- In Memory Of Hachiro Okazaki*
Keith Y. Okazaki
- In Memory Of James Okazaki*
Jeannette F. Okazaki
- In Memory Of Toyono Oi*
Tsutomu Oi
Robert Oka
Patrick Zukemura
- In Memory Of Keolani Patacsil*
Keolani Patacsil Trust
- In Memory Of Karen M. Peacock*
Katherine S. Hanlon
Rita C. Warpeha
- In Memory Of June S. Pong*
William Pong
- In Memory Of Louise Potts*
Frances L. Maxwell
Samuel R.P. Maxwell
- In Memory Of Franklin Pruse*
Alice Pruse
- In Memory Of Hernando R. Ramones*
Roselani K. Ramones
- In Memory Of Olivia Reid*
Philip T.S. Ho
Wallace K. Yashima
Sahm Bo Dahn Poonui
Exercise Group
- In Memory Of Shirley H. Remegio*
North American Shippers
Association, Inc
- In Memory Of Wesley H. Richardson*
Thomas A. Cajski
Sadie M. Coarsey
Wolf-Dieter Gaessner
Jacqueline C.W. Ho
Patrick T.M. McIlroy
- In Memory Of Donald H. Robinson*
Lynette N. Araki
Shannon A. Araki
David J. Beattie
Mark Bermudez
Jean Blinde
Beverly Jean Bouthillier
Laura Chang
Mary Julia Croly
- Donald Daily
Aileen Fujitani
Iris T. Fukui
John M. Hayakawa
Flora Y.A. Kinoshita
Alta M. La France
Warren M. La France
Felicia B. Marquez-Wong
Harriet Rechiniz
Denise Sanchez
Joyce M. Sheriff
Patricia A. Sullivan
John B. Thompson
Karen S. Thompson
- In Memory Of Pete Sandobal*
Margo M. Chester
- In Memory Of Isidora Santos*
Frank N. Santos, III
- In Memory Of Lydia M. Sauer*
Betty L. Kaniaupio
- In Memory Of Ethel E. Shaner*
Carolanne L. Chock
Marilyn M. Marciel
Susan Elizabeth Shaner
- In Memory Of Helen H. Sheehan*
Barbara B. Hanson
Sidne J. Long
- In Memory Of Wendy A. Smith*
Richard S. Bliss
Marilyn Bornhorst
Cyrena Bryan
Maud Chang
Lila Chun Chrystal
Edward Y.C. Chun
Richard C.F. Chun
John S. Craft
Elena Gaborno
Janet T. Higa
Ralph J. Kiessling
Marilyn B. Kim
Susan C. Kimi
Marica E. Lee
Roxanne M. Okazaki
Diane T. Ono
Kathy Ordway
Richard C. Palma
Meredith K.L. Pang, MD
Suzanne M. Pearce
Melinda Polivka
Cecelia Richardson
Bruce Smith
Ronald W. Wall
Ann R. Weers
Gail E. Yamamoto
Perry Heritage Ltd.
Partnership
- In Memory Of Ella Y. Song*
Andrew S.M. Song
- In Memory Of Frances L. Sutherland*
The American Legion
- In Memory Of Jane T. Suzuki*
Charlotte L. Koo

In Memory Of Thomas T. Takesue
Dexter H. Takesue

In Memory Of Bessie K. Takeuchi
Marilyn Takeuchi Boock

In Memory Of Helen F. Tamashiro
Dianne Asato

In Memory Of Raymond C. Teves
John L. Kercheville

In Memory Of Lynne Thrall
Marion L. Coste

In Memory Of Miyoko Tisch
Kristina Bianchi
Nancy Flamm

In Memory Of Thelma T. Tokairin
Donn S. Tokairin

In Memory Of Helen Tom
Rhoda T. Zane

In Memory Of Herbert B. Tongpalan
Dorothy A. Tongpalan
Victor L. Lincoln

In Memory Of Harue H. Uda
Jeanette M. Ueyehara

In Memory Of James K. Uemura
Lance A. Mizumoto
Lena L.F. Young

In Memory Of Takashi Ueyehara
Stanley Ueyehara

In Memory Of Thomas J. Vondrak
Sandra L. Rihm-Hammink

In Memory Of Toshiko N. Yagi
David B. Hu

In Memory Of Molly Yamaguchi
Claudia Haraguchi

In Memory Of Marian Yamamoto
Rachel Roper

In Memory Of Yoshiko Yanagi
Ronald Yanagi

Individuals

Teruo Abe
Danilo Nagtalon Ablan, MD
William Ables
Anthony K Acosta
Athan K. Adachi
Carol Ann Adarna
Sara Adjer
Nathan S. Afoa
Alice S. Afuso
Sumiko S. Agena
Terry N. Agena
Mary Kane Agor
Karen S. Aguineldo
Sr. M. Davilyn Ah Chick
Sharrie P. Ah Chick
Joseph A. Ah New
Darlene M. Ah Yo
Rowena A.H. Ahakuelo
Elizabeth K. Ahana
Daniel K. Akaka
Janet L. Akana
Helen L. Aken
Lane K. Akiona

Randall J. Cash
Amie Chandler
Cathy Chandler-Matsuda
Barbara Bow Yuk Chang
Harriet H. Chang
Joseph S.M. Chang
Margaret M.H. Chang
Nelson J.H. Chang
Peggy Y.J. Tom Chang
Sen-Dou Chang
John M. Chapman
Clayton K.O. Char
Muriel C. Char
Jean A. Chase
Cheon Pyau Chee
Darryl Chee
James P. Cheong
Diana G.H. Chew
Deane M. Chinen
Harold Chinen
Paul Y. Chinen
Sr. Agnelle Ching
Clifford Ching
Dorothy K. C. Ching
Fannie T. Ching
Florence H. Ching
Herbert Y. Ching
Lorna E. Ching
Mabel C. Ching
Wai Lan Li Ching
Jenny M. Chingon
Mona K.O. Chock
Rodger Y.O. Chock
Thelma G. Chock
Adele Deming Chong
Chuck Chong
Harry W.S. Chong
V. Chung
Reiko I. Choy
Beatrice Y.M. Chu
Albert Chun
Laura L.W.C. Chun
Marian Chun
Rosaland A. Chun
Sau Kin Wong Chun
Sharon S.H. Chun
Catherine Chung
Clifford Chung
David D.W. Chung
Elaine Chung
Jane O.C. Chung
Raymond Chung
Renee Adaniya Chung
Myrna Pang Chun-Hoon
Sharlene L. Chun-Lum
Michael Click
Betty I. Coffey
Margaret Shirley Connors
Timothy C. Conway
Thelma K. Copp
Jerry J. Correa
Ciriaca A. Cortez
Roberta M. Cosco
Resquer Dolores Costales
Robert I. Crowell
Iacolyn M. Cuban
Jane Cunningham
Richard J. Dahl
Janelle Damo
Harold M. Darcey
Leopold P. David
Victoria S. David
Frederick Davidson
Harriet K. Davidson
Leanne Ross Davis
Marcisa M. De Jesus
Glenn T. De Laura
Paul A. De Mare, MD
Elizabeth M. De Mello
Thomas Demoise
Augustine Van Horn
Diamond
Jill S. Dice
Burns Haunani Dickson
Kevin W. Dieffenbach
Grace A. Dijos
Wendy M. Dillon
Evangeline V. Dionisio
Albert Domalavage
Eunice Domingo
Carmen Doring
Peter J. Dumag
John Dunn
Thad W. Ekstrand

Sr. William Marie Eleniki
June Paik Emerling
Harry Endo
Zora E. Enoki
Estelle A. Enomoto
Lee Ann Errett
Wanda Estrella
Fay H. Eugenio
Loretta A. Falls
John Farias
Liza S. Farias
Jack L. Faumuina
Herman A. Fergerstrom
Rustico B. Fernandez
Rosaline C. Fines
Alice Fink
Sara Fischowitz-Leong
Lillian N. Fisher
Jennifer M. Fleming
Linda Flinn
Rhonda Flores
Aileen Lum Fong
Kathleen M. Foy
Fiara Franco
Geraldyn J. Franks
Nancy A. Frazier
Ruth Freedman
Brenda J. Freitas-Obregon
Gladys H. Friel
Stephen G. Fuerth
Edith N. Fujihara
Christy T. J. Fujii
Jane S. Fujikawa
Berg H. Fujimoto
Joyce M. Fujimoto
Martin S. Fujimoto
Ralph S. Fujioka
Aileen Fujitani
Jay H. Fukuda
Linda L. Fukuhara
Janie Fukui-Chiang
David H. Fuller
Sherylun Furuta
Clyde O. Fuse
Craig Gallagher
Charlotte Ganal
Cornelia Q. Gapol
Hildreth R. Garb
Ellen M. Garcia
Ronald M. Gella
Frank Genadio
Stephanie R. Genz
Earl G. Gilmore
Anna S.L. Gima
Lily T.Y. Gima
Norma A. Gima
Aniano Gionson
Stephan A. Glipa
Jacqueline C. Glipa-Cruz
Gerald P. Gonsalves
Joel Gonsalves
Raynette G. Goo
Clara H. Gouveia
David T. Goya
Glenn T. Goya
Lee Claire Graham
Loreen Granger
Estella M. Grantham
B. W. Green
Esther Yoshie Gresham
David Gruebner
Mona Gushiken
Robert E. Gwaltney
Iris S. Ha
Katherine M. Hadano
Ellina Hagler
Charles Hagner
Ruth N. Haitsuka
Apolinaria Hala
Betsy Hall
Lithea W. Hall
Robin Hall
Mary Jean Halm
Gail Hamada
Neal Hamada
Wesley T. Hamasaki
Seijun Hanashiro
John M. Hannaman
Susan F. Hansen
Nancy Harada
Valerie Harada
Robert Hardisty
Winifred T. Harris
Jin Suk Hasegawa

Satsuyo Hasegawa
Susan M. Hashimoto
Wayne M. Hashiro
Patricia Sue Hashley
Paul S. Hatae
John M. Hayakawa
Kenneth K. Hayashi
Valerie L. Hayes
Joan Hayward
Madeline Pang Heather
Barbara P. C. Hee
Walter Y.H. Hee
Kathleen R. Heirakuji
Gwen Heliker
Julia M. Hengel
Barbara S. Henry
Carlos E. Herrera
Robert T. Higa
Vivian Higa
Debbie A. Higuchi
Dennis T. Higuchi
Katherine Higuchi
Lillian Y. Higuchi
Helen Hilacion
Faye M. Hinochi
Gwyneth K. Hinostroza
Stephen Hiramoto
Gladys Hirano
Carolyn M. Hirata
Clarence Hirata
James H. Hirayama
Tatsue Hiroe
Marjorie Y. Hiura
Alma C. Ho
Victor Ho
Lorraine Leilani Honda
Lei M. Honda-Sigall
Norman G.Y. Hong
Nancy M. Honma
Sharon Hoo
Janet M. Horinouchi
William F. Horn
Phyllis C. Horner
Lois Hoshijo
E. D. Howard
Judith R. Hughes
Edwin S. Hulihee
Cecil N. Hunt
Doris J. Hurley
Robert Husic
Hank Iaukea
Jean S. Ige
Shirley F. Iha
Wanda Iha-Fernandez
Joy K. Ithori
Setsuko Miyata Iinuma
Teru Iinuma
Betty S. Ikeda
Carole M. Ikeda
Victorina R. Ilaban
Seeda Ilaaloale
Jean R. Imamoto
Dennis F. Imamura
Helen Inafuku
Noble K.H. Ing
Sheryl Mia Ing
Brandie L. Inouye
Herbert S. Inouye
Melvin F. Inouye
Sherilyn R. Iona
Lori Isara
Sandra T. Ishikawa
Brian Ishimaru
Mildred E. Ishimoto
Robert N. Isobe
Edwina Itokazu
Masako Iwami
Noboru Izumigawa
Patsy M. Izumo
Walter H. Izuo
Angelina M. Jacang
Jose Rosendo C. Jamir
Jennifer Q. Jandoc
Rebecca Q. Jandoc
Carole A. Janssen
Kathleen Jaycox
Gabriel Joaquin
Rosa Marie Noel Joaquin
Amelia Jodar
Erma E. Johnson
John C. Johnson
Josephine M. Jones
Roy S. Jumawan
Gisele L. Kaahanui

Lydia Puna Kaaialii Ramos
Winona A. Kahahane
Josephine K. Kahalewale
Jacqueline M. Kaheaku
Allen Y. Kajikoa
Lydia Kakalia
Dixie Kuulei Kalamau
Jacklinn Kalani
Leonn Kaleikini
Terrie Kaleohano
Christina K. Kalili
Marietta Kalua
Patricia M.T. Kalua
Choy Fu Kam
Ernella Lee Kam
Karla Lynn Kam
Mildred S. Kam
Miriam Kaminaka
Herman Kanee
Ford Kanda
Myrna N. Kaneko
Steven S. Kanemoto
Jan K. Kaneshiro
Kenneth Kaneshiro
Marlene Kaneshiro
Patrick K. Kaneshiro
Virgine Kanoo
Daniel H. Kapuniai
Bert Kasai
Carol Ann Y. Kato
Alan Y. Katsura
Elsie Y.W. Kau
Stanley K.T. Kau
Mervin James Kauhane
Doris L. Kawagoe
Barbara K.N. Kawamoto
Jane Kawamoto
Arlene S. Kawamura
Joyce T. Kawamura
Maxine Fay Kawamura
Matsuko Kawana
Michael K. Kawate
Virginia M. Kawachi
Satoru Kaya
Francis A. Keala
Charlene Lynn Keamo
Karen L. Kee
John C. Keene
Helen M. Kefford
Consuelo Keilihokoi
James A. Kelly
Sandra Kelly
Eaton M. Kempshall
Florence C. Keopuhiwa
Deborah K. Key
Jocelyn Kihara-Morioka
Julia L. Kilantang
Charlene M. Kim
Elizabeth Kim
Enid Kim
Lynn T. Kim
Michael G. Kim
Michelle L.B. Kim
Phoebie M. Kimura
Mary L. Kinilau
Theodore M. Kishimori
Lynette K. Kishimoto
Jean S. Kiyabu
Jean Ko
Lynn Koba
Walter Z. Kobashigawa
Ann H. Kobayashi
Carolynn Kobayashi
Christine M. Kobayashi
Marjorie F. Kobayashi
Richard S. Kobayashi
S. Koba
Haruyo Kodani
Rene W. Koga
Roland Kohashi
Kenneth M. Kojima
Steven T. Komura
Thomas J. Konarski
Glenn Kong
Coralie S. Kono
Katherine Y. Korenaga
Kazuo Kosaki
Iris Koshimizu
Wilfred G. Koshimizu
Suellen Kotake-Hollars
Robert C. Kouchiyama
David A. Kowalski
Katharine A. Kramer
Kenneth K. Kubota

Rosaline M. Kubota
Robert L. Kunes
June S. Kuramoto
Kent Y. Kurihara
Megumi Kuwada
William D.G. Kwon
Cosme Lagon
Ingrid A. Lagunte
Carole C. Lai
Morris Lai
Carol K. Lam
Daniel S. Lam
James G. Lam
Richard J. Lamb
Irene F. Lance
Harry Lane
Michael Langer
Joyce Laporte
Chew Lun Lau
Chew Poy Lau
Geoffrey Lau
Griffith L.H. Lau
Lorraine S.L. Lau
Ronald D.C. Lau
Thomas K.L. Lau
Lucrina C. Layos
Bernardo Layugan
Michael Leach
Beatrice B. Lederer
Bernadette A. Lee
Howard J.T. Lee
Katherine B. Lee
Kenneth H. Lee
Linda A. Lee
Mack M.T. Lee
Macy Ann Lee
Miriam M. Lee
Munmy Y.M. Lee
Reginald W.T. Lee
Ronald F.M. Lee
Rose K.H. Lee
Wen-Yu Lee
Winifred W. Lee
Corazon D. Legaspi
Ruth K. Lenney
David Leong
Kevin F. Leong
Paul B. Leong
Terri-Ann Leong
Lisa Ann M. Letoto-Ohata
Alice Leu
Lionel P. Levesque
Ai Sheng Li
Ricky Sing Cheong Li
Jodi Liao
Diana A. Liberato
Warren K. Lima
Paul Y.K. Lin
Jack H. Lirio
Anna Loengard
Abraham S.L. Loo
Vincent H.T. Loo
Karen L. Loomis
Miriam P. Loui
Chad P. Love
Roberta M. Lovely
Annie Lo-Ling Luk
Almira Lum
Chew Young Lum
Cynthia J.M. Lum
Eileen Lum
Florence E. Lum
Frances K.Y. Lum
Leatrice K. Lum
Patricia S.L.A.H. Lum
Pauline Bo Lin Lum
Robert C.Y. Lum
Wesley L.W. Lum
James Lumeng, MD
Walter S.F. Lung
A. K. Luning
Masako W. Lynn
Shirley S. Lystad
Sally Maemori
Gabriel Magabalin
Faith K. Mahaula
Aaron David Mahi
Renan W.K. Mahikoa
Lily H. Maielua
Mark Maki
Crescencia Malate
Viola R. Maloney
Valerie A.Y. Manabe
Makanani Pa'a Marcussen

Thomas D. Marick
Edward Markham
Aida R. Martin
Clarence Martin
Olivia T. Martin
Patty Bollinger Martin
Dina Martinez
Gary T. Marumoto
Russell F. Masui
Lewis Matayoshi
Ellen S. Matsuda
Kenneth M. Matsuda
Jiro Matsui
George K. Matsumoto
Sally Matsumoto
Marilyn A. Matsunaga
Carol A. Matsunaga
Harriet Fumiyo Matsuyama
Teresa Matutino
Carolyn J. Mau
George Mauliola
John H. Maxson
Samuel R.P. Maxwell
Andrew McCaffrey
Elizabeth McCutcheon
Donna M. McDonnell
Naomi A. McGinn
Robert E. McGonagle
Allan J. Mcquire
Jean McIntosh
Don D. McKinnon
Charles E. McLemore
Peter Meagher
Elsie D. Medrano
Ginger Mendonsa
Louneille Michinaka
Susan Mikami
Scott E. Miller
Rose L. Miltier
Stanley Y. Min
Shigeto Minami
Helene J. Minehira
Norman J. Minehira
Arlene Mirza
Lucile Smith Mystysyn
Randal M. Mita
Craig A. Miura
Doris Miura
Thelma T. Miyaguchi
Bert M. Miyamoto
Florence K. Miyashiro
Helene Y. Miyashiro
Janet S. Miyata
Edison H. Miyawaki
Merle Mizuno
Kenny T. Mochizuki
Minoru Mokatsu
Margaret Moreira
Suanne S.H. Morikuni
Ethel D. Morimoto
Janice A. Morioka
John K. Morioka
Gavin S. Morita
Ronna Morris
Charles Mosier
Margaret M. Muldon
Alan W. Mun
Ernest Murakami
Ethel F. Murakami
Nancy K. Murakami
Sharon C. Murakami
James Muraki
Floyd Murashige
Kent Murata
Kevin Murata
Lovey C. Nabalta
Edward M. Naeole
Craig H. Nagao
Keiko Basalio Nakajo
Margaret H. Nakakuni
Mildred M. Nakama
Sally Nakama
Adora Nakamura
Diane S. Nakamura
Judith J. Nakamura
Karen S. Nakamura
Nancy S. Nakamura
Pauline Nakamura
Raymond S. Nakamura
Sharon Y. Nakamura
Betsy C. Nakanishi
Dean M. Nakasone
June Nakasone
Jocelyn Nakata

Ronald Nakayama
Bonnie B. Nam
Patsy H. Nanbu
James A. Napier
Edith H. Nariyoshi
Susan Nawatani
Elizabeth M. Nelson
Jack W. Nelson
Jacqueline C. Nelson
Warner B. Nelson
Camille E. Neves
Debra New
Nami S. Nielpinski
Karen M. Nihei
Timothy Niles
Lenie F.P. Nishihira
Godwin Nishikawa
Francis K. Nishioka
Tess Nishioka
Masayuki Nohara
Abner Nunes
Haroldine E. Nunes
Marion M. Oda
Masanobu Oga
Sakae Ogawa
Tad T. Ogi
Celia I. Oh
Doris S. Ojiri
Dora Mae A. Okada
Tetsunobu Okada
Fumiko I. Okamoto
Lynelle M. Okamoto
Jeannette V. Oku
Shirley T. Okubo
Toshiko Okuda
Paul I. Okudara
Inga Ai Hee Park Okuna
Neil Okuna
Gayle N. Okutani
George G. Okutani
Maxine Olaguera
Itsuko Ono
Edward C. Ontai
Filip G. Ormita
Alma R. Ortiz
Gail L. Osakoda
Florence F. Oshiro
Jody S. Oshiro
Reid H. Oshiro
Walter N. Oshiro
Dave S. Oshita
Paul S. Oshita
Felicidad Otis
Bert K. Oyama
Estrellita A. Padilla
Norma A. Padua
Hyon S. Paek
Dexter Pagdila
Howard Pahed
Marte S. Pahed
Young K. Paik, MD
Anna L. Pang
Dennis M.H. Pang
Elmer C. Pang
Glenn M. Pang, MD
James S. Pang
Rebecca B. L. Pang
Raymond R. Panko
Roseta S. Paraz
Arthur W. Park
Moon Park
Jason Patterson
Valerie Payton
Suszanne M. Pearce
Gail Peiterson
Sallyanne K. Pekelo
Jeannie Pentz
Marylynn L. Perreira
Marilyn Jean Peters
Gwen Piano
Mark Pillori
James J. Pires
Mary S. Place
Jay Plisco
Alice Pong ODonnell
Elizabeth Powers
Larry Price
Edith G. Prussman
Joan Puchert
Soon Hi Puckett
Florence A. Puu
Karen S.W. Quon
Morris D. Rabinko
Susan F. Rack

Angelita M. Ragasa
Lillian A. Ramirez
Gwendolyn S. Ramiscal
Raquel Ramos
Elizabeth G. Rapoza
Sol Rattner
Esteban R. Recel
Renee Reed
Lynne Reinhardt
Al I. Remigio
Edniss Richardson
Suzie Riley
Gordon N. Ring
Erma C. Riodil
Canota Rivera
Andrea M. Rivera-Capenia
Marylyn L. Robello
Robert R. Roberts
Vilia Robertson
Carroll M. Robinson
Agnes Rodenhurst
Delfin O. Rodillas
Sandra Ronquillo
Glenda Rother
Judith Rubano
Agnes Rudenhurst
Rachel Ruis
Chiyo Sadoyama
Judy K. Sakamaki
Shari A. Sakami
Allen Y. Sakamoto
Ernest Y. Sakamoto
Stefanie Sakamoto
Daniel T. Sakata
Kip Sakuma
Eulalia Salima
Laura J. Sanches
Kimberly Sanchez
Darylene P. Santiago
Perfecto L. Santisas
Frank N. Santos
Helen S. Santos
Robert L. Saracco
Carol F. Sarceda
Colleen S. Sasaki
Eugene Sathre
Florence H. Sato
Yoshiko Sato
Linda J. Sayegusa
Benedicta Schmidt
Paul Schnur
Sr. Patricia Schofield
Sharon Torres Scott
Emily A. Seabury
Glenn Y. Segawa
Mary T. Segawa
Arthur S. Seki
Dorothy S. Seki
David A. Seligman
Andrew S.Y. Sham
Anne S. Shaver
Phyllis N.T. Shea
Margaret Shelgren
Steven T. Shigemoto
Helen Shigemura
Edith Shimabuku
Juliet S. Shimabukuro
Phyllis S. Shimabukuro-Geiser
Sharolyn Shimai
Helen O. Shimamura
Gail Shimazu
Robert M. Shimizu
Lynn T. Shimono
Henry T. Shinotsuka
Sue S. Shiohira
Bert M. Shira
Kyle H. Shirakata
Donna M. Shiroma
Shigeru Shiroma
Ethel T. Shishido
Jane M. Sholes
Masumi Shoma
Geraldine Shores
Leonard D. Silva
Stacey Ann Silva
Stephen James Silva
Benedict J. Simon
Gary B. Simon
Pearl A. Simonson
Chou Hong Siu
Mabel M. Slear
Mary Monroe Smith
Paul Harold Smith

Daniel J. Snaidauf
Ernil M. Sonnenberg
Alfred B. Souza
Emilia R. Souza
Maurice A. Souza
Adelta Sparre
Roy S.K. Spencer
Jessica Sphar
David Sprowl
Glenn Stang
Barbara Stanton
Paul Starzyk
Bobbi K.N. Steer
H. Howard Stephenson
Paul Steward
Sheldrake M. Stibbard
Stephanie A. Strickland
Andres Subeldia
Lois S. Suenishi
Glenn Sueyoshi
Tatsuo Sugino
Sr. Mary Edward Sugioka
Gail R. Sugita
James H. Sugita
Jerald T. Sumida
Kathleen Y. Sumida
Merwyn M. Sumida
Wendy L. Suyetsugu
Katherine H. Suzuka
James K. Suzuki
Joy S. Suzuki
N. S. Suzuki-Slakter
Julieta P. Swim
Mitsuo Tadaki
Sharon A. Tadaki
Darryl M. Taira
Bernice A. Tajima
Setsuyo Takahama
Janet Takahashi
Rhoda A. Takahashi
Matthew D.R. Takamine
Florence Takamori
Joan Takano
Patrick Takara
Tsuneko Takara
Gerald H. Takei
Mason T. Takeshita
Stanley S. Takeshita
Thomas T. Takesue
Charlotte Y. Takishima
Marina L. Talisayan
Susan M. Tamakawa
Fumiko Tamanaha
Katsugi Tamanaha
Nancy A. Tamashiro
Todd H. Tamashiro
Shirley Ann Tamoria
Cheryl Y. Tamura
Holly K.M. Tamura
Iris T. Tamura
Maurice S. Tamura
Yoichi Tamura
Emilyn Tanaka
Richard I. Tanaka
Deborah A. Tandal
Kristi Lee Taniyama
Harue Tanouye
Edward B. Tardelli
Gerald M. Tavares
Doris C. Taylor
Veronica Tebbe
Brenda Teranishi
Dorothy P. Teves
Vilma L. Texeira
Ivoga Thompson
Siaosi Thompson
Eugene N. Tiwanak
Carol F. Todoroki
Sharon K. Togashi
Fred Tokoro
Susan B. Tokoro
Florence T. Tokuda
Wendy Sue Tokumine
Motomu Tokunaga
Koichi H. Tokushige
Loretta K.J. Tom
Kimthu N. Ton
Reginald K. Tong
Irene S. Torres
Carmel Davis Tosaki
Marilyn Traniella
Elesa Trisler
Lourdes Tupper
John M. Tuttle

Kelly French Joe Twarowski
Edna R. Ugalino
German U. Ugalino
Susumu Umetsu
Hyun H. Underwood
Karen S. Uyeda
Rosemarie Uyehara
Gertrude K. Uyeno
Austin S. Vail
George H. Van Orden
Janice L. Vannatta
Subburahan Venkataraman
Blas M. Venus
Gail Victoriano
Dale Uilani Villa
Paula Villanueva
Florida D. Villaroz
Patrick Vyas
Sr. Barbara Jean Wajda
Gayle M. Wakabayashi
Henry Wallfesh
Patricia C. Walsh-Domingo
Wesley R. Warashina
Herman H.F. Wat
Grace Emiko Watamoto
Edith E. Watanabe
Jeffrey N. Watanabe
Masaichi Watanabe
Ruth C.S. Watanabe
Kristin L. Wauke
Alexis A. Weatherl
Barbara A. Weber
Peter V. Weber
Sheila N.A. Wensel
William P. Whaley
Gary White
Sr. Juliana Whitefield
June L. Wilson
Kathleen Sullivan Wo
Julie-Ann Won
Paul P.S. Won
Philip W. Won
Allen Wong
Clayton Wong
Ivy Wong
Jackie Higa Wong
James W.Y. Wong
Lori Wong
Theresa A. Wong
Tracy Wong
Greg Wood
Wendi S. Woodstrup
Vincent E. Wozniak
Jesse Wu
Elizabeth K. Yadao
Joy Y. Yadao
Peggy H. Yahiku
Harold H. Yamabe
Debbie H. Yamada
Suemi N. Yamada
Yutaka Yamada
Alice H. Yamagata
Mildred T. Yamamoto
Rance A. Yamamoto
Richard I. Yamashige
Elaine A. Yamashita
Jane C. Yamauchi
Della K. Yanagida
Carl K. Yanagihara
Mabel A. Yawata
Anne W. Yee
Edmund R. Yee
Herbert W.F. Yee
Richard K. Yee
Patrick K.S.L. Yim
Spencer K. Yim
Eric H. Yokote
Charlene Yoneda
Helen Yoshida
Lawrence K. Yoshida
Yoshiichi Yoshida
Isami Yoshihara
Alan T. Yoshikami
Lois Y. Yoshimura
Violet A. Yoshimura
David S. Yoshino
Grace M. Yoshioka
Darice B.N. Young
Donald S.C. Young
Elizabeth F.Y. Young
Geraldine J. Young
Raymond K.K. Young
Tuck H. Young
Verna H.F. Young

Walter S.L. Young
Jabon Yu
Nelson Yuen
George K. Yukitomo
Frederick A. Zane
Mark K.K. Zen
Suzanne M. Zeng
Zhuo Hui Zhang

Corporations
A M Construction
AARP
Adway Promotions
Alakea Design Group, LLC
Aloha United Way
Alternative Care Services, Inc.
American Savings Bank
AMPCO System Parking
AON Consulting
Appraise It! Hawaii, LLC
Atalanta Sosnof Capital, LLC
Benefit Plan Solutions, Inc.
Borthwick Mortuary
Boy Scouts of America (Aloha Council)
Breakthroughs
Ceferino C. and Mitsuko Oshiro Fernandez Fund
Central Building Co., Ltd.
Century Computers, Inc.
Christian Brothers Investment Services
CKM Architects, LLC
Clinical Laboratories of Hawaii, LLP
Commercial Sheetmetal Company
COX Radio, Inc.
CPSJ dba Jesuit Fathers House
Darryl E. Wong Trust
Darryl M. Taira
Diana S.D. Berry Trust
Edward Enterprises, Inc.
Electricians, Inc.
Environet, Inc.
Ernst & Young LLP
EWorld Enterprise Solutions
Fidelity Charitable Gift Fund
First Assembly of God
First Hawaiian Bank
Foodland Super Market, Limited
Geolabs, Inc.
Group 70 International, Inc.
Grubb & Ellis/CBI, Inc.
H & H Productions, Inc.
Hansen Food Service
Harriet Fumiya Matsuyama Trust
Hawaii Bio-Waste Systems, Inc.
Hawaii Pacific Area
Hawaiian Telcom, Inc.
Healthways, Inc.
Hennigan Bennett & Dorman
Hinokawa's Construction
HMSA
Honolulu Star Advertiser
ING Financial Services
Insurance Solutions, LLC
Invision Imaging
Jack and Marie Lord Trust
James Kometani Realtors, Inc.
Jhamandas Watumull Fund
KAI Hawaii, Inc.
King Windward Nissan
KMH LLP
Kobayashi Development Group, LLC
Kohala High School
Korean Ladies
Larry & Beatrice Ching Foundation
Leeward Integrated Health Services
Leong Family Trust
Leslie's Gift Shop
Liberty Dialysis Hawaii
Louise and Y.T. Lum

Foundation
LSM Consultants, LLC
Macy's Foundation
Maui Bible Church
Makana Partners, LLC
Mary and Paul Wagner Charitable Fund
McCorriston Miller Mukai MacKinnon LLP
Medical Specialists of Hawaii
Miliani Hongwanji
Mitchell Family
Mayabara Associates, LLC
Monarch Insurance Services, Inc.
MV Farms, Inc.
N&K CPAs, Inc.
National Christian Foundation
Nightingale Case Management, Inc.
Our Lady of Good Counsel Church
Painters Local Union 1791
PAMCAH-UA Local 675
Pankow Builders
Perry Heritage Ltd.
Partnership
R.M. Towill Corporation
Richard F. Norstrom Revocable Trust
Royal Contracting Co., Ltd.
Samuel N. & Mary Castle Foundation
SH Consulting LLC
Sister Maureen Integenational Learning Environment (SMILE)
Sisters of St. Francis
Sotto International
South Shore Pools, Inc.
SSI Investment Management
Froley Revy
St. Augustine Church
St. Elizabeth Catholic Church
St. Elizabeth College of Nursing
St. Elizabeth School
St. Francis School
St. Mary's Hospital
Stanford Carr Development, LLC
State of Hawaii Human Services Dept
The Ahmed Corporation (PDC Systems)
The Florence and Samuro Ichinose Foundation
The Harry & Jeanette Weinberg Foundation
The Queen's Medical Center
Thyssen Krupp Elevator
Tiwanak Associates Hawaii LLC
Tomco Corp.
United Laundry Services, Inc.
West Coast Construction
William N. Shirachi & Nancy C. Shirachi
World Scientific Publishing Co. PTE, Ltd.
World Wings International, Inc. - Hawaii Chapter
Y. Hata & Company, Ltd.
Yaweh's House for Children



St. Francis

HEALTHCARE SYSTEM OF HAWAII

2226 Liliha Street, Suite 227 Honolulu, HI 96817

NON-PROFIT ORG.
U.S. POSTAGE
PAID
HONOLULU, HI
PERMIT NO. 1647

CHANGE SERVICE REQUESTED

St. Francis Call Center
547-6883



St. Francis Healthcare System of Hawaii is now on Facebook. Become a Fan!

Facebook is a registered trademark of Facebook, Inc.



THE ST. FRANCIS LEGACY
FALL 2011 Vol.4, No.1

Chief Executive Officer
Sister Agnelle Ching, OSF

Co-Editors
Cheryl Tamura and Nathan Hokama

St. Francis Healthcare System of Hawaii
2226 Liliha Street, Suite 227, Honolulu, HI 96817
Telephone: (808) 547-6883

The St. Francis Legacy is published by
St. Francis Healthcare System of Hawaii.

If you do not wish to receive fundraising requests from St. Francis Healthcare System or its subsidiaries, please write to us to have your name removed from our mailing list.

SFHS 2011 All rights reserved Obun Hawaii Group
2.8M

The Vision Continues
& **Every Gift Counts**

Yes, I'll support the St. Francis Healthcare Foundation. I would like:

- To help the Sisters and to support their health care mission in Hawaii.
- To designate a specific St. Francis Healthcare System program: _____

Enclosed is my gift of \$ _____.

(My check/money order payable to St. Francis Healthcare Foundation is enclosed.)

Please charge my: Mastercard VISA Discover Card

Account Number _____ Expiration Date _____

Signature _____

Thank you for providing us with the following information:

Name(s) _____

Address _____

City, State Zip _____

Telephone (Day) _____

E-mail address _____

Please send me information on:

- Estate Planning Charitable Remainder Trusts Bequests Wills

Contributions to St. Francis Healthcare Foundation are tax-deductible.

Contributions may also be made online: www.stfrancishawaii.org

Send to: St. Francis Healthcare Foundation

2228 Liliha Street, Suite 205, Honolulu, HI 96817