

TAYLORIAN PRODUCTIONS

presents

THE ADVENTURES OF



DICK WHITTINGTON

A Spectacular New Production!

Directed and Choreographed by John Cumberlidge

Our Star Performers...

We are proud to support and promote specialist, small-scale local food heroes who are upholding the traditions of quality and craftsmanship in Manx products.



Individual Cake Company
Matthew Maney
Noble's Park Cafe, Douglas



The Original Manx Fudge Factory
Peter Birch, Ballasalla



Ellerslie Rapeseed Oil
Pentti Christian
Ellerslie Farm, Crosby



Island Seafare
Tim Croft
Port St Mary



Greeba Mushrooms
Mark and Kathy Irwin
Greeba



Staarvey Farm Preserves
Stephen and Jenny Devereau
Staarvey, Near Peel



Cocoa Red
Karl Berrie
Aaron House, Port St Mary



Wagstaffe's Coffee
Paul Wagstaffe
Ballasalla

The produce of these and other Manx Food Heroes is available from Shoprite - Victoria Road, Douglas and Bridson Street, Port Erin.



in partnership with our local suppliers



TAYLORIAN PRODUCTIONS

proudly presents



Directed and choreographed by John Cumberlidge

Producer Matt James

Musical Director John Callister

Musical Arrangements Andrew Hilton

Lighting Design by Paul Seed

Sound Design by Alex Linney

patricia wild THE OPTICIANS
programme sponsors for this production of

DICK WHITTINGTON



*personal service • professional • independent • track record
international • family firm • offshore • efficient
independent • established • international • offshore
dealing • Members of the London Stock Exchange • long term
stability • consistent • trust • performance • dealing*

International Stockbroking Service Since 1946

*performance • established • experienced • independent
track record • professional • traditional • family firm
trust • investment management • efficient • dealing service*



Ramsey Crookall & Co. Ltd. Members of The London Stock Exchange

SECURITIES HOUSE

38/42 ATHOL STREET

DOUGLAS

ISLE OF MAN

IM1 1QH

TEL +44 (0) 1624 673171

FAX +44 (0) 1624 677258

www.ramseycrookall.com

dealers@ramseycrookall.com

LICENSED BY THE ISLE OF MAN FINANCIAL SUPERVISION COMMISSION

Matt James

– producer and co-founder of Taylorian Productions

It is with great pride that I welcome you to the Gaiety Theatre for Taylorian Productions' first ever pantomime – The Adventures of Dick Whittington.

As anyone involved with Taylorian would tell you, it's been quite a year for the company.

As 2011 dawned, so began the process of auditions for our summer show The Wizard of Oz, the most technically complex production we had ever embarked upon.

To say the reception from the public, both locals and visitors, simply blew us away is an understatement and I'm delighted to say the show broke box office records for a local show at the Gaiety.

Of course, no sooner had we taken Island audiences along the yellow brick road and over the rainbow, then began the next challenge.

Our close-knit team, led by our superb resident director Mr John Cumberlidge, has embraced the whole 'panto experience' (oh yes they have!) and I would personally like to thank John, the cast, crew and members of the production company for their hard work and commitment over the last few months.

Dick Whittington is part of pantomime folklore and while I'm sure you'll agree we have maintained that tradition and preserved its essential spirit, we have also propelled it into the contemporary world.

With a Manx slant, certainly no politician will be safe from ridicule!

As always, we could not do without the support of the Manx public.

The most important people in this panto are YOU – the audience!

Make sure you cheer the goodies, boo and hiss the baddies and use your magic wands and swords – and watch out for any high-flying marshmallows!

All that remains to say is sit back, relax and enjoy the magical and wonderful world of pantomime.

Have a very Merry Christmas and a wonderful New Year! X



Mr Patrick Taylor – our founder

'Mr T' loved theatre, loved panto and loved Christmas.

So for the company which bears his name to be staging its first ever pantomime – just five years after it was formed – is an almighty thrill.

In fact, it's probably fair to say the only thing that would have stopped Patrick Denton Taylor from leading the audience participation for all 20 performances this Christmas would have been if he had persuaded the director for a cameo role himself!

Although it is now more than three years since he passed away at the age of 74, his joy and simple passion to produce quality theatre remains the company's inspiration.

We hope that is evident throughout our production of The Adventures of Dick Whittington.

Happy Christmas Mr T!



THE HEAT IS ON

DOUGLAS CHORAL UNION

By arrangement with

CAMERON MACKINTOSH

Presents a new production of

BOUBLIL and SCHÖNBERG'S

MISS Saigon

6 - 18 FEBRUARY 2012

TO BOOK CALL 600555 OR VISIT WWW.VILLAGAIETY.COM

SMP Partners

DQ 
DOUGHERTY QUINN

in association with

manx radio
the sound of your life

This amateur production is licensed by Josef Weinberger Ltd on behalf of Music Theatre International and Cameron Mackintosh Ltd

 **pommaginn media**

isleofman.com
the island's website

WH-MANX
communication through technology

Paradise & Gell
The Sound of the Island
Quality Audiovisual


Isle of Man Post Office
Ok Postage Eten Verwin

Clare Payne
PHOTOGRAPHY

John Cumberlidge – Direction and Choreography

Taylorian Productions' first ever panto at the Gaiety Theatre brings John back to the Isle of Man for the second time in 2011, after the record breaking summer production of *The Wizard of Oz*.

As with many performers, pantomime was John's first visit to live theatre and he was bitten by the bug from that moment on.

Many years later as a performer he was fortunate to appear in many top panto productions, including *Babes in the Wood* with Les Dawson (Empire Liverpool), the London Palladium production of *Aladdin* with Danny La Rue (Birmingham Hippodrome), *The Sleeping Beauty* (Theatre Royal, Plymouth) and *Aladdin* with Barbara Windsor (Chichester Festival Theatre); also choreographing and co-directing productions including *Jack and the Beanstalk* with Jeremy Beadle and *Aladdin* with the Grumbleweeds.

John's career began in Theatre, Television and Cabaret – in London and the Provinces, USA and Germany.

West End credits are *Underneath the Arches* at the Prince of Wales Theatre, *La Cage Aux Folles* at the London Palladium and *The Wizard of Oz* for the RSC at the Barbican and Stratford.

On television, *Love Story*, *Parkinson*, *Halls of Fame* with Roy Hudd, *A Night of 100 Stars*, *Royal Variety Shows*, many award ceremonies and cabaret in the *Talk of London* revues.

Provincial credits include *My Fair Lady*, *Abracadaver* with Frank Langella, *The Boy Friend* and many others.

As a director and choreographer, John has received critical acclaim for his productions of *Follies*, *Oliver!*, *Kiss Me Kate*, *Kismet*, *The Best Little Whorehouse in Texas*, *Scrooge - The Musical*, *Jesus Christ Superstar*, *Back to the 80s*, *Sweeney Todd*, *Mack & Mabel*, *My Fair Lady*, *The King & I*, *La Cage Aux Folles*, *We Will Rock You*, *Barnum*, *Hello Dolly*, *Jekyll & Hyde - The Musical* and *Me & My Girl* – for which he received the Best Director Award at the First International Festival of Musical Theatre.

He achieved great personal success and satisfaction tutoring the NODA musical performers' courses at Warwick and Loughborough Universities, where he studied *Jesus Christ Superstar*, *Evita*, *West Side Story*, *Sunset Boulevard* and *Sweeney Todd*.

John also specialises in period hair design and make-up. He has his own small company which styles and co-ordinates video and television productions.

This production, as always, is dedicated to the memory of Patrick Taylor whose support and friendship lives on.

Geoff Legan – Script Writer

Born and raised in Stoke on Trent, Staffordshire, Geoff has been involved in Theatre for the last 30 years both locally and nationally.

Dramatic roles include: Algernon in *"The Importance of Being Earnest"*, George Deever in *"All My Sons"*, Herr Miller in *"The Deep Blue Sea"*, Geoffrey in *"Stepping Out"*, Rupert/Evelyn Farrant in *"Corpse"*, Louis Kurnitz in *"Lost in Yonkers"* Graham in *"A Chip in the Sugar"* and *"Alan Bennett"* in *"The Lady in The Van"*

In musical theatre, Geoff has performed in most of the Gilbert and Sullivan Operettas, both concert and full scale productions, primarily in the "Patter Roles." Other various character roles include playing Mr Sowerberry/ Dr Grimwig in *"Oliver"*, Nicely-Nicely Johnson in *"Guys and Dolls"*, Lord Evelyn Oakley in *"Anything Goes"*, Gerald Bolingbroke in *"Me and My Girl"*, Seth Tallentire in *"The Hired Man"*, Professor Baher in *"Little Women, The Musical"* and Scrooge in *"Scrooge - The Musical"* (twice).

As a Director his productions include *"The Secret Diary of Adrian Mole aged 13¾"*, *"Stepping Out"*, *"The Cemetery Club"*, *"A Chorus of Disapproval"*, *"The Lady in the Van"* and *Talking Heads: A Woman of No Importance*, *A Lady of Letters*, *Her Big Chance*, *Soldiering On*, *A Cream Cracker Under The Settee*, *A Bed Among The Lentils*, *A Chip in The Sugar*, *"Rock Nativity"* and *"Bugsy Malone"*.

He also staged a European Premiere of John Misto's award winning *"The Shoehorn Sonata"* and is also working on staging John's play *"Gossamer"* which tells the story of Conan Doyle, Houdini and the Cottingley Fairies.

Geoff has also performed many charity cabaret, parties and fete openings in the guise of one of several "famous ladies" including Dame Hilda Bracket and Dame Edna Everage. He is also in demand to write and compere concerts and fundraisers bringing his own brand of quirky humour to stages around the Midlands.

Geoff says: Someone once wrote: 'Shaw couldn't write it. The Oliver's couldn't act it. Gigli couldn't sing it and Fonteyn couldn't dance it. It's pantomime. It happens once a year all over Britain and there's no other art form quite like it'.

Here's hoping you enjoy watching the show as much as I enjoyed writing it!

TRACEY BELL®

It's so simple... we do the basics and so much more

General & Cosmetic Dentistry
Orthodontics & Clear Braces
Full Beauty Services
Medical Laser Clinic
Non-Surgical Facial Treatments
Cosmetic Surgery
Bodyshaping & Recontouring
Laser Hair Removal
Tattoo & Pigmentation Removal
Non-Surgical Fat Reduction
Hair Transplantation

follow us on:    YouTube

tel: 01624 613 323 web: www.traceybell.co.uk email: reinvent@traceybell.co.uk

Tracey Bell Clinic, Kensington Road, Douglas IM1 3PE

SmileScription™
General & designer dentistry

SkinScription™
Non-surgical solutions

SlimScription™
Lose the weight & gain the shape

SpaScription™
All your beauty needs

SurgicalScription™
Surgical solutions

TAYLORIAN PRODUCTIONS
PRESENTS

COMING SOON TO THIS THEATRE



EVITA

lyrics by Tim Rice music by Andrew Lloyd Webber

SUMMER 2012



Pringle Law
Legal services

Full Range of Legal Services:

Family Law

Wills and Probate

Criminal law

Civil and Commercial Litigation

Property Transactions

Private and Legal Aid

“Great service – competitive quotes”

16 Athol Street, Douglas, Isle of Man IM1 1JA

01624 612200

or

Fax 01624 612300

www.pringle-law.com mail@pringle-law.com

PRINGLE LAW LEGAL SERVICES

William Sidgwick - Dick Whittington

William graduated from Mountview Academy of Theatre Arts in 2009 with a BA (Hons) in Musical Theatre.

Previous roles include Joe Josephson in 'Merrily We Roll Along' directed by Matt Ryan at the Chelsea Theatre, Memphis in 'The Life' directed by Hannah Chisswick at the Albany Theatre and Rev. John Hale in 'The Crucible' directed by Sally-Anne Griffin at the Karamel Club.

Since graduating, William has performed in song cycle 'A Little Bit of Sondheim' at Jermyn Street Theatre and 'Snow White and the Seven Dwarfs' pantomime last year as Muddles.

He has also appeared in several short films, including Iago in a contemporary extract from 'Othello' and the Agent in 'Extras' with Alexander Beck directed by Michael Scanlon. Most recently he played the role Ben in 'Ben & Alfie' comedy short.

William is currently working on the sitcom 'The Protagonists' with comedy sketch group Four Screws Loose, Alexander Beck and Alex Zylko, with a pilot set to be filmed later this year with the BBC.

William is honoured to be playing Dick in the Taylorian production of 'Dick Whittington'. He hopes you enjoy the show and wishes you all a very Merry Christmas and a prosperous New Year!



Alexander Beck - Idle Jack

Alexander graduated from Mountview Academy of Theatre Arts in 2009.

Since graduating, Alexander has appeared in "Soviet Zion", "A Stage Kindly", has played the lead in The National Theatre tour with The People's Theatre Company and was a finalist in "Phoenix's Got Talent" at the Criterion with Elaine Paige as the guest judge.

Alexander is currently playing Edward in John Cameron's new musical "1916", which is set to open on Broadway next year.

Whilst on the Island, Alexander performed as Rolfe in "The Sound of Music" (DCU), Michael in "The Witches of Eastwick", Fergal in "Back to The 80s" (Manx Operatic) and of course as Miss Gulch/The Wicked Witch of the West for which he received wide acclaim with Taylorian in their summer smash hit The Wizard of Oz.

Alexander is thrilled to have the opportunity to come back to his home to perform on the Island he loves and wishes you all a very Merry Christmas!



Your **dream** yesterday,
is your **reality** today

It's understanding the importance of protecting the dream that sets us apart from the rest.

In addition to first-class credentials and excellent service, you're probably looking for people with dynamism who can create innovative solutions. You'll find these skills in the dedicated team at Equiom who provide efficient and professional fiduciary services.

We provide:

- reassurance over all fiduciary and legal requirements
- registered office and registered agent facilities
- multi-jurisdictional capability
- a well-respected corporate trustee
- experienced practitioners to administer the trust and ensure its legal and tax status

“Having worked in the industry for a long time I can compare the skill levels of different trust companies quite easily. I hold the people at Equiom in very high esteem. The organisation delivers very professional services to clients. Compared to other providers I would say that they are more reliable and extensive; they are among the top out there...”

(Accountant)

Tel: +44 1624 699 000 | Email: enquiries@equiom.im | www.equiom.im

Equiom


A partnership built on trust

Children's Word Search & Colouring

I	N	C	A	G	O	D	U	E	U	E	P	S	P	K
A	L	I	C	E	I	E	M	A	D	M	A	E	X	K
N	Q	N	G	T	L	D	L	C	A	I	L	A	X	Q
W	E	N	E	O	S	T	E	N	F	M	A	X	Y	Y
F	I	E	N	R	K	Z	E	L	T	O	C	N	S	O
K	C	D	U	D	R	C	D	B	N	T	E	B	H	T
V	O	W	I	Q	K	A	A	T	E	N	B	C	F	M
N	O	C	E	U	B	Q	W	T	D	A	L	M	B	L
Q	K	W	C	D	R	V	L	Z	H	P	W	F	I	S
R	O	T	C	O	D	H	C	T	I	W	R	A	P	L
N	A	T	L	U	S	I	N	I	K	F	T	I	J	L
H	I	S	H	I	P	D	N	F	Z	G	H	G	A	E
R	S	T	X	B	S	N	J	G	N	C	T	N	C	B
P	U	I	S	J	I	A	U	O	V	A	Z	Y	K	L
C	I	V	F	R	H	K	L	R	X	K	T	R	Z	B



ALICE
BELLS
CAT
CHIPS
DAME
DENT
DICK
FISH
FIZWARREN
IDEL
INCAGOD
JACK
KING
LONDON
LONGTAIL
PALACE
PANTOMIME
QUEEN
SEA
SHIP
SULTAN
WEDDING
WITCHDOCTOR



Kleinwort Benson in the Isle of Man would like to wish you all a very Merry Christmas and a prosperous New Year

Private Banking Fiduciary Services Trustee Custodian Services

Isle of Man enquiries; please call +44 (0) 1624 643210 or email robert.o'connor@kleinwortbenson.com

www.kleinwortbenson.com

 **Kleinwort Benson**

In the Isle of Man Kleinwort Benson is the Registered Trading Name of Kleinwort Benson Bank (Isle of Man) Limited and Kleinwort Benson Trustees (Isle of Man) Limited. Registered office St George's Court, Upper Church Street, Douglas, Isle of Man, IM1 1EE. Both are licensed by the Isle of Man Financial Supervision Commission.

Scene breakdown

Prologue - Beneath London Town/The Outskirts Of London

Act 1 Scene 1 - Outside Fitzwarren's Emporium In London Town

Act 1 Scene 2 - The Sewers Beneath London Town

Act 1 Scene 3 - The Interior Of Fitzwarren's Emporium

Act 1 Scene 4 - The Outskirts Of London (Highgate Hill)

Act 1 Scene 5 - The Dream (The Guildhall)

Act 2 Scene 1 - On The Deck Of "The Golden Behind"

Act 2 Scene 2 - Underwater

Act 2 Scene 3 - The Shores Of Peru

Act 2 Scene 4 - An Inca Temple: Machu Picchu

Act 2 Scene 5 - Back In London (Cheapside)

Act 2 Scene 6 - Finale (The Guildhall)

John Callister ± Musical Director

John grew up here on the Isle of Man, learning to play Trombone firstly at school, then also as part of the local Brass Band scene. The busy Manx music scene gave him opportunities to play regularly with The Isle of Man Wind Orchestra, Manx Youth Orchestra and with various Big Band and Jazz Bands.

In 2004, he left the Isle of Man to take up a place at the Royal Northern College of Music in Manchester. He graduated with honours in 2008 having studied with noted trombone specialists such as Chris Houlding, Andrew Berryman and Rob Holliday and having playing principal trombone for the RNCM Big Band, Symphony Orchestra, Wind Orchestra and Opera Orchestra. John also studied conducting and ensemble direction with Clark Rundell and Mark Heron.

After the RNCM, John undertook a PGCE in Music with Specialist Instrumental Teaching. He graduated in Spring 2009. John is now based in Manchester, working as a freelance Trombonist, Conductor and Teacher, in addition to being a member of staff for Staffordshire Performing Arts.

John returned to the Isle of Man in 2010 for "Oliver", his first show with Taylorian Productions and then again in the summer of this year for "Wizard of Oz".

Recent theatre work in the UK includes, "Legally Blonde" (touring show), "Annie", "My Fair Lady", "Oklahoma" and "Calamity Jane".

He is very much enjoying being back on the Island once again this Christmas for "Dick Whittington".

Orchestra

Woodwind : Kim Jameson
Trumpet : Paul Hamilton
Trombone/MD : John Callister

Keyboard 1 : Emily Stringer
Keyboard 2 : Kieran Joy
Bass Guitar : Johnny Galbraith
Drums : James Davis

NK Construction Ltd

Trading Names of NK Construction Ltd
Incorporating NK Joinery, NK uPVC Products and Curphey Bros. (Builders)

NK uPVC Products

Trading Names of NK Construction Ltd
Incorporating NK Joinery, NK uPVC Products and Curphey Bros. (Builders)

are proud to support
Taylorian Productions
in their presentation of

THE ADVENTURES OF
DICK WHITTINGTON

Unit 16 Spring Valley Industrial Estate Douglas Isle of Man IM2 2QR
Tel: 01624 671537 Fax: 01624 617537
Email: info@nkconstruction.co.im www.nkconstruction.co.im

GRAND HOTEL

THE MUSICAL

Presented By

Manx Operatic Society

2nd - 10th March 2012

Gaiety Theatre Box Office

600555

www.mos.im

Book by Luther Davis
Music and Lyrics by George Forrest
and Robert Wright
Additional Music and Lyrics by
Maury Yeston

Based on VICKI BAUM'S GRAND HOTEL
by arrangement with
TURNER BROADCASTING CO.
owner of the motion picture
GRAND HOTEL

This amateur production is presented by
arrangement with Josef Weinberger
Limited on behalf of Music Theatre
International of New York



Dick Whittington



William Sidgwick

Q: Dream Christmas Dinner Guest?

David Attenborough

Q: What would you like in your Christmas Stocking?

Another stocking, so I've got a pair!

Q: New Years Resolution

To spend less time with Alex

Idle Jack



Alexander Beck

Q: Worst Christmas Present ever?

Piano Tie

Q: And the best?

Thomas Tank Engine & Friends, DVD collection

Q: What would you like in your Christmas Stocking?

A leg

Mandy the Cat



Queen Longtail



Olivia Black

Q: Dream Christmas Companion?

Mr Bean

Q: What would you like in your Christmas stocking?

A kitten

Q: New Years Resolution

'Give up giving up'

Ro



Liam Moorhouse

Q: Dream Christmas Companion?

My family and beautiful girlfriend

Q: Best Christmas Present ever?

I'd love a bouncy castle

Q: Dream Christmas Destination?

Ballaugh, Yessir!

Georgia Maddocks

Q: Dream Christmas Companion?

Zac Efron

Q: Worst Christmas Present ever?

Toilet Roll

Q: Dream Christmas Destination?

Beach

Alice Fitzwarren



WHITTINGTON

Sarah Pearson

Q: Dream Christmas Companion?

Michael Buble

Q: Dream Christmas Dinner Guest?

Lady GaGa

Q: What would you like in your Christmas Stocking?

Champagne



Lady Isabella



Chris Caine

Q: Dream Christmas Dinner Guest

Turkey and Stuffing

Q: Worst Christmas Present ever?

Sprouts

Q: What would you like in your Christmas stocking?

I think I know but I better check with my wife

Fairy Bridge



David Dawson

Q: Dream Christmas Dinner Guest

Megan Fox

Q: Worst Christmas Present ever?

The Flu

Q: Best Christmas Present ever?

Still waiting on Megan Fox

Dent



Lewis Kelly

Q: Dream Christmas Companion?

Jim Carey

Q: Best Christmas present ever?

A car!!

Q: What would you like in your Christmas Stocking?

Rhianna or Beyonce

Hercules



Andrew Halstein

Q: Who's your favourite Reindeer?

Rudolph

Q: Favourite Christmas Song?

I wish it could be Christmas every day

Q: Best thing about Christmas?

Presents and seeing family



Ben Jolly Dance Captain

Q. Dream Christmas Dinner Guest

Angela Lansbury

Q. Best Christmas Present ever?

Tickets to a Broadway Show

Q. What would you like in your Christmas stocking?

I don't have a stocking ...so a stocking would be nice

Callum Taylor

Q. Dream Christmas Companion

Forget who, as long as they can cook a mean Christmas dinner

Q. Best Christmas Present ever?

Financial support from family to go to drama school

Q. What would you like in your Christmas stocking?

Lots of chocolate and a toothbrush



Josh James

Q. Worst Christmas Present ever?

Orange

Q. Dream Christmas Destination?

Ramsey

Q. New Years Resolution?

Stop eating vegetables

Christopher Booth

Q. Dream Christmas Dinner Guest?

The President

Q. Best Christmas present ever?

Ferrari Enzo

Q. What would you like in your Christmas Stocking?

Pokemon cards



Paul O'Dea

Q. Who's your favourite Reindeer?

Comet

Q. Favourite Christmas Song?

Jingle Bell Rock

Q. What would you like for Christmas?

A fridge

Joe Hillard

Q. Dream Christmas Companion

Rhianna

Q. Worst Christmas Present ever?

Solar powered dancing plant pot

Q. What would you like in your Christmas stocking?

Jelly Beans



M B L E



Jenny Callister

Q. Dream Christmas Dinner Guest

Cast of Friends

Q. Best Christmas Present ever?

Walk in Wardrobe

Q: Dream Christmas Destination?

New York



Laura Bryars

Q. Dream Christmas Companion

Daniel Craig

Q: Dream Christmas Destination?

Anywhere with Snow

Q: New Years Resolution

Pass my driving test



Zoe Greatbatch

Q. Dream Christmas Companion

Ewan McGregor

Q. Worst Christmas Present ever?

Socks

Q: Dream Christmas Destination?

Canada



Kayleigh Booth

Q. Worst Christmas Present ever?

Teddy

Q: Dream Christmas Destination?

Florida

Q: New Years Resolution

Stop eating chocolate



Olivia Helmer

Q. Dream Christmas Dinner Guest

Rupert Grint

Q. Worst Christmas Present ever?

Binbag

Q. Best Christmas Present ever?

Point Shoes



Alice Smith

Q. Dream Christmas Dinner Guest

One Direction

Q. What would you like in your Christmas stocking?

Justin Bieber

Q: New Years Resolution

Stop eating Nutella out of the jar

APPLES &



Connor Duggua

Q. Who's your favourite Reindeer?
Rudolph

Q. Favourite Christmas Song?
Jingle Bells

Q. What would you like for Christmas?
BMX Bike



Rebecca Salmon

Q. Best Christmas present ever?
Nintendo 3DS

Q. Favourite Panto Character?
Dorothy

Q. Who's your favourite Reindeer?
Rudolph



James Pringle

Q. Favourite Panto Character?
Peter Pan

Q. Favourite Christmas Song?
Feed the World

Q. What would you like for Christmas?
Guitar



Eve McGregor

Q. Favourite Panto Character?
The Ugly sisters

Q. What would you like for Christmas?
New Phone

Q. Best thing about Christmas?
Being with family



Ben Karran

Q. Best Christmas present ever?
Spiderman bike

Q. What would you like for Christmas?
Clothes

Q. Best thing about Christmas?
The smell



Ruth Corlett

Q. Who's your favourite Reindeer?
Dasher

Q. What would you like for Christmas?
Laptop

Q. Best thing about Christmas?
Christmas tree



Alex McCauley

Q. Favourite Panto Character?
Ben Karran

Q. Favourite Christmas Song?
Jingle Bells

Q. What would you like for Christmas?
iMac Book Air



Laura Corkhill

Q. Best Christmas present ever?
Zegway

Q. What would you like for Christmas?
Pogo Stick

Q. Best thing about Christmas?
Decorations



Jacob Halstein

Q. Who's your favourite Reindeer?
Rudolph

Q. Favourite Christmas Song?
Jingle Bells

Q. What would you like for Christmas?
1 Billion pounds



Abbie Williams

Q. Who's your favourite Reindeer?
Cupid

Q. What would you like for Christmas?
Alarm Clock

Q. Best thing about Christmas?
Snow and presents



Alex Reynolds

Q. Who's your favourite Reindeer?
Dasher

Q. Favourite Christmas Song?
Twelve days of Christmas

Q. Best thing about Christmas?
Food



Ellie Caine

Q. Favourite Panto Character?
Alice from Dick Whittington

Q. What would you like for Christmas?
Boo Doll from Monsters Inc

Q. Best thing about Christmas?
Presents

PEARS



Lewis Croft

Q. Best Christmas present ever?

X-Box

Q. Who's your favourite Reindeer?

Prancer

Q. Favourite Christmas Song?

Jingle Bells



James Gilpin

Q. Who's your favourite Reindeer?

Rudolph

Q. What would you like for Christmas?

iPhone

Q. Best thing about Christmas?

Presents and giving stuff



Harry Cain

Q. Best Christmas present ever?

iPod

Q. Who's your favourite Reindeer?

Rudolph

Q. Favourite Christmas Song?

I wish you a Merry Xmas



Michael Diehl

Q. Favourite Panto Character?

Dick Whittington

Q. Favourite Christmas Song?

Jingle Bells

Q. Best thing about Christmas?

Presents



William King

Q. Favourite Christmas Song?

Ding Dong

Q. What would you like for Christmas?

Bike

Q. Best thing about Christmas?

Parties



Nathan Reynolds

Q. Best Christmas present ever?

Drums

Q. Favourite Panto Character?

Scrooge

Q. Who's your favourite Reindeer?

Dasher



Rachel Smith

Q. Favourite Panto Character?

Cinderella

Q. Favourite Christmas Song?

When Santa came down the chimney

Q. What would you like for Christmas?

Phone



Simi Skelcher-Maxwell

Q. Favourite Panto Character?

Ugly sisters

Q. Favourite Christmas Song?

All I want for Christmas

Q. Best thing about Christmas?

The cake



Lois Mooney

Q. Best Christmas present ever?

Laptop

Q. Favourite Panto Character?

Dopey - seven dwarfs

Q. Favourite Christmas Song?

Santa Claus is coming to town



Destiny Tate

Q. Who's your favourite Reindeer?

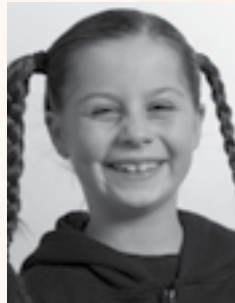
Dasher

Q. Favourite Christmas Song?

Feed the World

Q. Best thing about Christmas?

Santa



Ebonie Tate

Q. Favourite Panto Character?

Mandy the cat

Q. Favourite Christmas Song?

All I want for Christmas is you

Q. Best thing about Christmas?

Elves



Claudia Lewthwaite

Q. Best Christmas present ever?

Doll

Q. Favourite Christmas Song?

Silent Night

Q. Best thing about Christmas?

Presents

Tax expertise right around the globe. And just around the corner.

At Grant Thornton, we combine global reach with unrivalled local expertise. So if you want to expand around the world, you can draw on a network of more than 100 offices. And if you want the finest tax planning services right here in the Island, talk to us.



For more information contact:

Grant Thornton

Third Floor, Exchange House
54-58 Athol Street, Douglas
Isle of Man IM1 1JD

Fax: 01624 662249

Email: Dennis.mcgurgan@im.gt.com



Grant Thornton

Audit • Tax • Advisory

Tel: 01624 639494

www.grantthornton.co.im

From the production team that brought you

Bugsy Malone

J.T. Productions Proudly Presents..

The Islands Premier of



A fabulous new version of this timeless classic

Coming to the Gaiety Theatre in 2012

Could you be our Annie?

***We are looking for 100 Boys & Girls between
the ages of 6-18 to star in our production***

Island wide auditions coming soon

Contact annieiom@yahoo.co.uk

Sell your home in 3D

"There's No Place
like Home..."



tel: 01624 662820



propertywise.co.im
THE WISE MOVE

www.propertywise.co.im

14b Village Walk, Onchan, Isle of Man IM3 4EB



Merry Christmas
from M&P Legal.
We have donated to
local charities in lieu
of Christmas cards.



www.mplegal.im

GREAT PASS RATE



- Fun, Friendly, Professional Tuition
- Off peak lesson rate & other special offers
- All Island Coverage
- Intensive Courses available

PASS
PHIL SMITH
DRIVING TUITION

45 39 39

www.philsmithdrivingtuition.im



**Ellan Vannin
Gymnastics
Club**

Would like to wish the
cast and crew of
Taylorian Productions in
'The adventures of
Dick Whittington'
a very successful show.

The Club currently has places available for gymnasts of all ages and abilities. Our coaches are qualified with British Gymnastics, from pre school to high performance level and have received appropriate child protection training. We welcome new members, regardless of any previous experience.

The Club is available to hire as a venue for Children's birthday parties at the weekends, and Youth Group 'experience' evenings can also be arranged.

We are situated just off Pulrose Road, Douglas, (behind the NSC)

Please contact 01624 615415 or 07624 421358 for further details.

www.ellanvannin.org

The Local Insurance Company



Jubilee Buildings, 1 Victoria Street, Douglas, Isle of Man IM99 1BF

Telephone: 01624 645900

Fax: 01624 663864

Email: tower.insurance@uk.rsagroup.com

are happy to support
Taylorian Productions
in their presentation of

THE ADVENTURES OF
DICK WHITTINGTON

www.towerinsurance.co.im



Barbara Gale A. D. B. - a passion for performing and teaching

Many parents of young children will know Barbara Gale as Founder and Director of 'Gale Force', the Theatre school now in its 23rd year that consistently produces some of the Island's brightest young talent, students for whom discipline in class and distinction in exams are the norm.

What fewer people may know is that Barbara is a four-times Cleveland medal winner at the Manx Music Festival, ('the Guild'), was the first woman to sing in the Royal Chapel at St John's for the Tynwald Day ceremony, and is one of only eight singers from the Isle of Man to have won the coveted Blackpool Music Festival's rose bowl. She has also sung for the Queen at Olympia in London and Prince Charles at St John's, has three CDs to her name and for over 20 years taught Performing Arts and Drama at the Buchan School.

For 10 years Barbara served on the Isle of Man Arts Council. She is a member of the Society of Teachers of Speech and Drama, the Isle of Man Theatre in Education network representative and a member of NODA (National Operatic and Drama Association).

Barbara is happy to help arrange sessions to suit you - to find out more give her a call today on 496556.



Tuition in speech training to all ages

Helping students achieve UCAS points

IELTS exam tuition

Preparation for public speaking

Training in all aspects of musical theatre

Founder/director of Gale Force
- theatre school for 4-14yr olds

www.galeforce-online.net

barbs@galeforce-online.net

Tel: 496556



CLW
Management
(2001) Limited

About Us

UK Solutions

International
Solutions

Brochure
Request

Umbrella Company Solutions for Global Contractors

CLW Management (2001) Limited has been providing Umbrella Company Solutions for over 20 years and has gained a good reliable reputation amongst agencies and clients alike.

We consider ourselves able to provide the most competitive range of confidential and professional services available anywhere. Consultants who use our services benefit from the flexibility we can offer and the fast turnaround from inception of contract to termination.

We offer solutions to both International and UK Self Employed and Employed Consultants.

1st Floor,
Removal House,
Finch Road,
Douglas,
Isle of Man. IM1 2SN

T: + 44 (0)1624 621546
F: + 44 (0)1624 676308
E: info@clwmanagement.com

Website: www.clwmanagement.com

Production team



John Callister



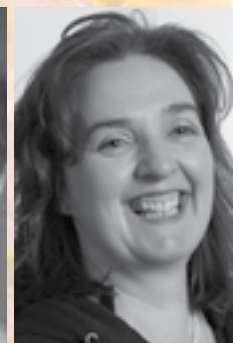
Liz Dixon



Janet Norris



Diane Killip



Jenny Halstein



James Davis



Emily Stringer

Director/Choreographer John Cumberlidge
Producer Matt James
Musical Director John Callister
Musical Arrangements Andrew Hilton
Dance Captain Ben Jolly
Official Accompanist Emily Stringer
Vocal coach Liz Dixon
Marketing/PR James Davis
Production Coordinator Jenny Halstein
Stage Manager David Daugherty
Lighting Design Paul Seed
Sound Design Alex Linney
Head of Wardrobe Diane Killip
Hair Tracey Booth
Make-Up Janet Norris
Head Chaperone Rachel Kissack
Props Lucy Cain
Prompt John Callow
Front of House Christine Breadner
Transport Richard Solomon



Tracey Booth



David Daugherty



Rachel Kissack

Costume Creation and Hire

Academy Costumes
 Adrian Gwillem
 Andrew Allen
 Birmingham Costume Hire
 Norwich Theatre Royal
 Kenneth Moore Theatre, Ilford
 Diane Killip
 National Theatre
 Royal Shakespeare Company
 Measure for Measure Costume Hire
 Green Room Club, Jersey
 Molly Limpets, Sheffield
 Viv Quayle
 Susan Ashcroft
 Lynn Delaney

Set Creation and Hire

Qdos Pantomimes Division
 Albermarle of London
 Oak Events
 Nick Murley
 NSOS scenic dept

Prop Creation and Hire

Taylorian Props
 NSOS Prop Hire
 Paul Devereau
 David Daugherty
 Carol of the Huggary

Wig Hire

The Wig Room
 Steven Metcalfe
 Measure for Measure

Acknowledgements

David Furnell
 Margaret Noyce
 Alan Brian
 Peter Waddell
 Peter & Sandra Morris
 Richard Masters
 Alison Mitchell
 Andrew Allen
 Mark Procter
 - Orangegreenandblue@tiscali.co.uk
 (Show image concept and artwork)
 Manx Independent Carriers
 Steven Metcalfe



is delighted to support
Taylorian Productions' pantomime



manx radio
the sound of your life

is proud to be associated with

THE ADVENTURES OF
DICK WHITTINGTON



For all your cleaning / hygiene and catering solutions

*Merry
Christmas!*



D. L. 

GELLING

 *wholesale*

Quality and Service

**Happy
New Year
2012**

8 Snugborough Trading Estate,
Union Mills,
IM4 4LH.

Telephone: 01624-851200

Fax: 01624-852272

e-mail: sales@dlgwholesale.im

Distributor of Lotus
Professional Products and
a Partner Distributor for
Diversey Limited

**Are proud to support Taylorian & wish the
cast of
Dick Whittington every success**



Britannia
International
part of The co-operative bank

Junior Saver

The account that grows with you...

- For Isle of Man savers aged 0 up to 16 years old
- Minimum balance only £10, maximum £25,000
- 2.00% gross p.a./A.E.R. variable interest rate paid annually
- Immediate withdrawals by cash or cheque (£10 minimum)
- £10 WHSmith gift voucher or £10 credit for each new account



☎ 681100

🌐 www.britanniainternational.com

Call into one of our branches: Athol Street, Douglas • Parliament Street, Ramsey • Orchard Road, Port Erin

*AER stands for Annual Equivalent Rate and illustrates what the interest rate would be if the interest was paid and added once a year, rounded to two decimal places. Interest rates correct as at 01/11/2011. Britannia International Limited Registered Office: Britannia House, Athol Street, Douglas, Isle of Man, IM99 1SD, British Isles. Manx Registered Company No 50583. Britannia International Limited is a wholly owned subsidiary of The Co-operative Bank plc in the UK, which is regulated by the UK Financial Services Authority. Britannia International Limited places funds with other parts of its group and thus its financial standing is linked to that of the group. Depositors may wish to form their own view on the financial standing of Britannia International Limited and the group based on publicly available information. The latest report and accounts for Britannia International Limited are available at www.britanniainternational.com and for the group at www.co-operativebank.co.uk. **Britannia International Limited is licensed by the Isle of Man Financial Supervision Commission to take deposits.** PANTO1211



manx mushrooms

...where goodness tastes great

Make room for manx mushrooms this Christmas

From tasty party treats to the vegetarian Christmas dinner, from traditional turkey stuffing to tantalising side dishes – you'll be amazed what you can do with our mushrooms.

Try our chestnut mushrooms sautéed, mixed with blue cheese or cranberry cheese, add a few toasted walnuts, pop in the centre of puff pastry squares, pull the sides up to make a parcel and bake for 10-15 mins. Tasty, easy nibbles to impress your friends.

*For more recipes and inspirational mushroom ideas why not join our **RECIPE CLUB**. Call us, pop in to the farm or simply drop us an email.*

Wishing all the cast and crew the very best for a great panto and a merry Christmas and happy New Year to one and all

Award winning local mushroom producer and supplier of spent mushroom compost

Available from Shoprite, Robinsons, Spar, most independent stores and of course direct from our farm
Main Road, Crosby • TEL 851611 • WEB www.greebafarm.co.im • EMAIL mail@greebafarm.co.im



Staff teams

Wardrobe

Amy Bairstow
Lynne Beattie
Lisa Bell
Tracey Booth
Anne Dawson
Jenny Halstein
Sam Hoodless
Grace Hoodless
Nicola Lewthwaite
Rachel Kissack
Lianna Schiesaro
Lindsey Scarffe
Adele Towns
Pat Lowe

Hair

Mary O'Dea
Yvonne Karran

Make-Up

Sandie Divers
Megan Purnell
Jo Tate

Front of House

Laura Breadner
Val Craine
Pat Danks
Bex Dawson
Jessica Daugherty

Crew team

John Callow
Lindsay Riordan
Brian Diehl
John Skinner
Paul Devereau
Martin Devereau
Matthew Diehl
Tony Millichap
James Croft
Robert Bray
Tasha Stephenson
Juan Riordan

Follow-spots

Joanna Curphey
Graeme Jolly
Hayley Daugherty



Acknowledgements

Matt James, John Cumberlidge and James Davis wish to place on record their sincere appreciation and grateful thanks for the assistance given by so many.

To the public for their continued support and our sponsors and advertisers who have taken space in this programme.

Thanks to Steve Woodley for superb photography.

Thanks to Mark Procter for superb artwork.

Thanks to David Furnell, UK Wardrobe Assistant Supervisor.

Thanks to Laine Theatre Arts and the Urdang Academy.

Thanks to Patricia Wild, Eddie O'Sullivan and all the team at Patricia Wild Opticians.

Thanks to Steve Moore, Alan Perkin and all the team at Mannin Media.

Thanks to Manx Concert Brass, Manx Operatic Society, St Peter's Church, Loch Prom Church, St Andrew's Church and St Matthew's Church for rehearsal venues.

Finally, a big thank you to all the parents of the Taylorian children for their patience, understanding and 'free' taxi service to and from rehearsals over the last few months!

Villa & Gaiety complex staff

Brian Murray	operations manager
Seamus Shea	technical manager
Graham Bayliss	stage manager
Ted Faragher	assistant stage manager
Alex Davidson	theatre technician
Carl Crellin	assistant theatre technician
Neill Cowin	front of house manager
John Foster	front of house manager

Evacuation procedure

If you are asked to evacuate the building please do so as quickly as possible and leave by the nearest exit to which you are directed by the staff.

In the event of an emergency which, by necessity, requires that this theatre be evacuated you, as a member of the audience, are requested to co-operate by paying strict attention to any instructions either announced from the stage or given by a member of staff of this theatre.

DO NOT run or push.

DO NOT turn back or stop to collect personal belongings.

DO NOT re-enter the building for any reason until officially told to do so.

DO NOT act in a manner that could cause obstruction to emergency services attending the building to deal with the emergency.

Avoid panic at all costs. Proceed in an orderly manner to a place of safety away from the building.

N.B. 1. All gangways, passages and aisles shall be kept entirely free from obstruction.

2. Persons shall not be permitted to stand in any gangways or aisles.

3. The safety curtain shall, at all times, be maintained in working order and shall be lowered and raised during the time of every performance.

Patrons are respectfully reminded that this is a **NO SMOKING** Theatre and **NO PHOTOGRAPHY** is allowed in the Auditorium.

patricia wild

THE OPTICIANS

are pleased to support
taylorian productions



NHS & Private Eye Examinations • Special Reading Tints (Colorimetry)

Digital Retinary Photography • Visual Field Analysis

All types of Contact Lenses • Helpful Frame selection service

Frames for every budget • Designer & Rimless Frames

Sports Frames & Swimming Goggles • Comprehensive Emergency Repair Service

Victoria Mall Parliament Street
Ramsey Isle of Man IM8 1AZ
telephone: 01624 813977

Clybane Court Farmhill Braddan
Isle of Man IM2 2NF
telephone: 01624 613158

PART OF THE FAMILY SINCE 1935



**We have supported our customers
with deposit accounts, personal loans
and corporate finance for generations.**

Proud sponsors of the Christmas Pantomime
Dick Whittington.

Call: **694694**
Click: **conisterbank.co.im**
Visit: **Clarendon House,
Victoria Street, Douglas**



Generations of trust since 1935