

# Join the Charge to **MAKE FM A CAREER OF CHOICE**



FY2019 Annual Report



**IFMA  
FOUNDATION**  
MAKING FM A CAREER OF CHOICE

# Making FM a career of choice

The IFMA Foundation is a charity (Not-for-profit 501 (c) (3)) and a separate entity from IFMA

As a charity, the IFMA Foundation relies solely on financial contributions and donations to support its mission and vision.

The Foundation's **mission** is to Make FM a Career of Choice and is dedicated to promoting education for the advancement of the facility management profession around the world.

## About Us

Join the charge and  
let's Ignite FM

It has been all about expanding existing pathways, as well as creating new ones to achieve our goals of increasing and ensuring quality FM education while increasing the pool of talented skilled professionals to fill the shoes of the retiring workforce and at the same time, having fun doing it.

As Ralph Waldo Emerson said, “Do not go where the path may lead, go instead where there is no path and leave a trail.” And trailblazing is what the leaders, Board Members, GWI Advisors and the chapters accomplished this year. We did it by adding new people, expanding new education pathways, enriching the pathways to the industry with our Advisors, the IFMA Board of Directors, and enjoying ourselves and chapter supporters with our FM Adventure in the splendor of finding the paths to some of the best vineyards in Napa in January.

**New people:** While Diane is hardly new to the Foundation (she was a Trustee for 5 years, as well as Chair from 2015-2016), she assumed the Director position this year and brought with her all her knowledge and experience in FM, her connections and most of all her passion for what the Foundation is all about. We also were fortunate to add Christine Gonzales to the team with her experience in non-profit organizations, community building and volunteer management.

**Educational Pathways:** One of the most exciting education pathways is the development of the GWI in the California Community College System with the addition of College of San Mateo and West Los Angeles Community College and Southwest College to follow in early 2020. Enhancing that program with the adoption of an FM educational framework thanks to the generosity of the Hong Kong Jockey Club and Graham Tier and the creation of the new career pathway map. In addition to the Accredited Degree Program (ADP) there is a new designation, the Registered Facility Management Program (RFMP) which will expand the college and university program pipeline. Students scholarship winners can not only attend IFMA’s World Workplace conference but also participate in the exciting competition Ignite FM, which is also held in Europe.

**Partner Pathways:** Partners have never been more important to our success this year which includes, first of all, the IFMA Board of Directors, the GWI Advisors, IFMA Chapters, Councils and Communities, and our corporate sponsors.

**Experiential Pathways:** Energy, enthusiasm, that one saw at World Workplace After-Party with global student scholarship winners and IFMA leadership was truly phenomenal. As a result, this led to new ideas to enhance student experiences with the profession. The global built environment gathered for the first FM Adventure held in Napa, California. In addition to raising funds for the Foundation and touring wineries, attendees participated in an interactive education experience on wineries construction, sustainability and water conservation. We would like to thank the IFMA local chapters for providing their own local experiences raising funds for the Foundation.

Finally, I would like to personally thank Joe Archie for filling in my responsibilities as Chair while I have had to recover from an unexpected medical condition.

# Letter from the Chair

Nancy Sanquist

# Table of Contents

<u>Content</u>	<u>Page</u>
Global Workforce Initiative (GWI)	5 - 7
New GWI Programs	8 - 10
Accreditation & Academic Recognition	11-12
2018 Scholarship Winners	13 - 16
Ignite FM Student Challenge	17
IFMA Foundation Awards of Excellence	18
Marketing, Communications, and Events	19 -22
FY2019 Revenue	22
Thank you for your time, talent, and treasure	23 - 26
Board of Trustee Listing	27 – 34
IFMA Foundation Hong Kong	35
IFMA Foundation Staff	36
Follow Us!	37

## **Miriam Chacon**

Student, College of San Mateo  
San Mateo, California  
Project Administrator, Western Allied  
Mechanical, Inc.



*“I want to thank my instructor, Christian Pellecchia, for supporting my career path while I earn certificates in both Facilities Management and Project Management. Had it not been for Christian and Silicon Valley Chapter president Jeremy Goodland, I would have never met the wonderful people who I call my IFMA family today. The Facilities Management Program at the College of San Mateo opened my eyes to how I could use transferable skills and learn about greater job opportunities. Christian was smart for requiring us students attend IFMA local chapter events as part of our class. He told us, “You never know who you’re going to meet at an IFMA event, it could be your next employer.” Before our class was even finished, six students were hired through IFMA chapter sponsored events and I am fortunate to be one of them. Thank you IFMA Silicon Valley Chapter and IFMA Foundation”*

# Global Workforce Initiative (GWI)

The IFMA Foundation is narrowing the employment talent gap through early facility management learning and experiences. Our GWI corporate partners believe in the shared-value investment of a better-prepared future workforce. They understand that the key to unleashing a company's competitive advantage and increasing corporate growth and the potential that lies in training today's youth for tomorrow's business challenges. The IFMA Foundation works closely with multi-national corporations, national companies and small to medium-sized businesses to identify, design and implement alliances that leverage the strengths of the corporate sector on behalf of Facility Management for social good.

**WE CONNECT** with communities to inform students, parents, teachers, guidance counselors, community organizations, economic development and government agencies about an exciting and prosperous career opportunity.

**WE EDUCATE** students and incumbent workers through STEM and STEAM programs in high schools offering IFMA courses, certificates, credentials and the FM accredited degree programs at higher education institutions.

**WE INVEST** in the future by providing new career opportunities through scholarships, internship programs, career fairs, job listings, job shadowing and our Ignite FM! student competitions.

Our **GWI corporate partners** demonstrate leadership among their corporate peers by participating in an opportunity to shape the future global workforce.



# GWI Advisor Perspective

Igniting the Future of FM



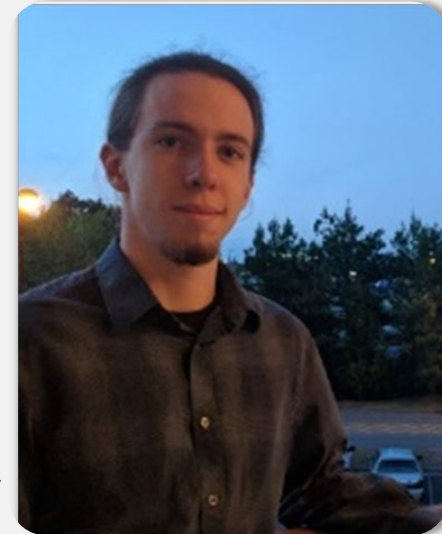
## Scott Sherman, Sodexo Senior Director of Talent Acquisition

“As a global FM industry leader, we believe it is vital to lead in the solution development by leveraging our expertise in FM and our expertise as a **leader in diversity** and inclusion to **build a stronger and more diverse pool of FM talent for the future**. The IFMA Foundation **Global Workplace Initiative Advisory Council** gives us that opportunity to participate internationally, nationally and locally to collaboratively work with industry and academic leaders to create and implement solutions.”

## Devin Shackelford

Kennesaw State Graduate, Georgia  
2018 IFMA Greater Triangle Chapter Scholarship Recipient  
2018 IFMA World Workplace Conference Attendee  
Now – Sodexo Employee

“**Had it not been for the IFMA Foundation Scholarship program** and Ignite FM! Student Challenge at IFMA World Workplace, **I would not have the job that I have today at Sodexo**. I was fortunate enough to have people from Sodexo witness and judge my Ignite FM! competition presentation. **Fortunately, the Sodexo judges were impressed with my skills and abilities and offered me a position** as an operations support specialist for their Walgreens portfolio. I’m excited to be in charge of their computerized maintenance management system.”



# GWI Advisor Perspective

Igniting the Future of FM



## Meet Elizabeth Zamora, Chaffey College Graduate

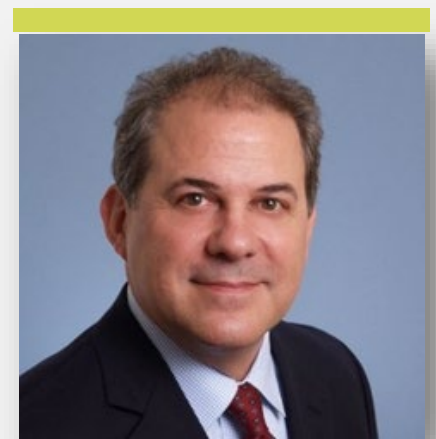
### From ABM intern to ABM full-time employee

“Many students were drawn to this facility management program because of the demand and income. I can’t say it’s not a good incentive. Still, **thanks to ABM, I soon realized what my true passion is. I am truly fascinated with operations. I’m really grateful for the day you visited Chaffey College and handed me your card.** Now that I have finished my internship, I am looking forward to pursuing my career in Facility Management. **Thanks to you and ABM, I was able to find a guided pathway to what I am beyond doubt passionate about.**”

– Excerpts from letter to Tony Piucci, IFMA Foundation 1<sup>st</sup> Vice Chair & GWI Advisor

## Tony Piucci, Sr. Vice President ABM Business and Industry Facility Services Solutions

“As an industry veteran, it’s always exciting to help young people and career-changers break into our profession, and I enjoy the IFMA Foundation’s Ignite FM! Student Competitions. What really struck me about this competition was how the winning team -- and all of the teams -- were able to collaborate, come up with a solution, and present it in such a clear and thoughtful way. The energy, diversity and creativity of this new generation is bringing to our industry is remarkable. “





# College of San Mateo

## New GWI Program

### Together with Northern California IFMA Chapters

22 students enrolled in January 2019.

A new video was launched to introduce students, community members, and industry partners to CSM's program.

Six students landed jobs just weeks after their first course began.



# West Los Angeles College

## New GWI Program

## Together with Southern California IFMA Chapters

Open house and orientation in May 2018 resulted in 17 students enrolling in facility management course 4 months prior to class start.

Coursework is designed to help newcomers to the field understand the language and basic concepts of facility management.



# The Power of GWI

## Re-energizing opportunity for the professionals of the future

### Phyllis Meng, IFMA Fellow, CFM, SFP

President, Meng Associates, Chaffey College and West Los Angeles College FM Instructor



*Re-known in the region as a legendary teacher and mentor to students and incumbent FM workers, Phyllis also teaches at the first GWI program which started at Chaffey College.*

“IFMA’s curriculum ensures that certificate earners understand the language and basic concepts of facility Management (FM) as well as the facility manager’s role in the tactical planning, scheduling and accomplishment of daily FM tasks. FM is an interdisciplinary business function that coordinates space, infrastructure, people and organization. It is often associated with the administration of office properties, arenas, schools, universities, sporting complexes, convention centers, shopping complexes, hospitals, hotels, manufacturing and shipping.”

### Christian Pellecchia, VP Slatter Construction

VP IFMA Silicon Valley Chapter, College of San Mateo FM Instructor



*As part of the class, students will have a free one-year membership in IFMA, compliments of the Silicon Valley Chapter and the opportunity to attend regular IFMA meetings.*

“The IFMA Foundation Global Workforce Initiative has **re-energized the IFMA Silicon Valley Chapter**. As the instructor for the new FM program at College of San Mateo, we require students taking the Essentials of Facility Management (EoFM) to attend a **minimum of three Silicon Valley chapter meetings**. I trained the students in networking prior to their first IFMA meeting. **The energy of the students was infectious and has re-engaged our members**. Our chapter is fully supportive of the future of FM and making FM a career of choice.”

# Accreditation & Academic Recognition

23 years of valued excellence as the global accrediting body for facility management degree programs and growing...



## Registered Facility Management Program (RFMP)

For over twenty-three years the IFMA Foundation has served as the global accrediting body for the Facility Management Accredited Degree Programs (ADP), setting the academic standards and criteria for college and university programs which offer associate, bachelor, master and post-graduate degrees. The IFMA Foundation announced the creation of the new Registered Facility Management Program (RFMP) to allow educational institutions to give college certificates that equip graduates with the core competencies of facility management. This coursework will provide the education needed for students to move right into the workplace. The RFMP will create a continuum that will lead to the creation of new facility management Accredited Degree Programs.



## Facility Management Graduate (FMG) Designation and Digital Badge

The New Facility Management Graduate (FMG) Designation and Digital Badge was launched. Digital FMG badges are currently available to graduates of the Facility Management Accredited Degree Program free of charge. Degree holders can apply for their badge with IFMA by filling out a form online at [www.ifma.org/my-account/camp](http://www.ifma.org/my-account/camp)

IFMA and IFMA Foundation partnered with Credly, a top digital badging company, to provide this service through their platform, Acclaim.



Graduate Degree, USA



Undergraduate Degree | USA



Undergraduate Degree | Canada



Undergraduate Degree | USA

**The Facility Management Accredited Degree Program** is a primary initiative of the IFMA Foundation and where we invest the largest amount of human, volunteer, and financial resources. Increasing the number of graduates with FM degrees entering the workforce is essential for the future of the profession.

Our **newest FM accredited degree program** is the **Ngee Ann Polytechnic Associates Degree in Hotel and Leisure Facilities Management** located in Singapore.

To learn more, visit the IFMA Foundation FM Academic Registry at: <https://fmacademicregistry.org>



Undergraduate & Graduate Degree | USA



Graduate Degree | USA



Undergraduate Degree | Netherlands



Graduate Degree | Hong Kong



Graduate Degree | USA



Undergraduate Degree | USA



Undergraduate Degree | South Korea



Associate Degree | Singapore



Graduate Degree | USA



Graduate Degree | USA



Associates Degree | Singapore



Undergraduate Degree | USA



Graduate Degree | USA



Undergraduate Degree | USA



Undergraduate & Graduate Degree | Switzerland

# IFMA Foundation Scholarship Winners

All winners attended 2018 IFMA World Workplace Atlanta, GA



*Eva Buurma*

*International Facility Management  
Management  
Hanze University of Applied Sciences  
Groningen, Amsterdam, NL*

Ms. Buurma has a confident, problem-solving, and professional attitude. Her various roles and activities in education, research projects, volunteering and work experience highlight her proven leadership skills. As a facility manager, she responds to challenges through creative solutions and admits finding value and fascination to the profession.



*Elizabeth Moinet*

*Business with FM certificate  
Chaffey College  
Hesperia, CA*

Ms. Sullivan is enthusiastic about the profession. Assuming a leadership role with the Chaffey College Student Chapter of IFMA she recognizes an untapped wealth of potential between the students, the college, and the FM profession. Her long-term goal is to become a liaison to students for IFMA while focusing on completing her degree and obtaining an FMP® credential.



*Sungil Hong*

*Building Construction and Facility Management  
Georgia Institute of Technology, Atlanta, GA*

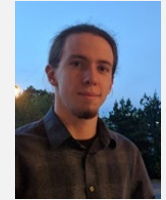
Serving as an officer in the Republic of Korea Army, Mr. Hong understands the value of relationships and the strength of team work. He is determined to become certified as a Facility Management Professional™ (FMP) with a Ph.D. that will combine multilateral research experience and interdisciplinary knowledge in the facility management field.



*Marielle Sand*

*Facilities Management  
NHTV Breda University of Applied Sciences  
Dalheim, Luxembourg*

Ms. Sand uses her organizational skills to guide teams through a projects process, communication, and the development of successful outcomes. She is recognized by her instructors as an intelligent, highly-motivated, well-disciplined student with a strong attention to detail. She plans to specialize in airport services and facility management environment.



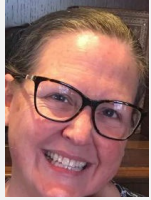
*Devin Shackelford*

*Construction Management (FM emphasis)  
Kennesaw State University  
Atlanta, GA*

Mr. Shackelford admits he has a passion for sustainability in the construction field and wants to transform this passion in a way that will help preserve and repair the globe's environment. Noted by one professor as a natural leader and actively involved in student organizations and competition; Mr. Shackelford has ambitions to become an international facilities management and sustainability expert.

# IFMA Foundation Scholarship Winners

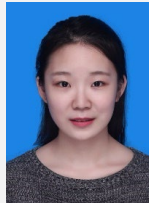
All winners attended 2018 IFMA World Workplace Atlanta, GA



**Trina Lujano**

*Business with FM certificate  
Chaffey College,  
Upland, CA*

Mrs. Lujano was a facility manager even before she heard of the profession. It was not a surprise to anyone that Mrs. Lujano became chapter president for the Chaffey College Student Chapter of IFMA since she was the driving force of its inception. Mrs. Lujano identifies her outgoing nature and her love for people and communications as a catalyst that will make her a productive and energized facility management professional



**Duo Xu**

*Building Construction and  
Facility Management  
Georgia Institute of  
Technology  
Atlanta, GA*

Ms. Xu aspires to be a driving force for the more popular high-tech systems and technologies that will improve the complex business and building combinations. Her internship and academic research experience attributes to her skills as a team leader, presenter, and strong team spirit. Ms. Xu is eager to learn and advance her academic training and practice in the field of facility management.



**Varusha Venkatraj**

*Architecture – Facility  
Management  
Texas A&M University  
College Station, TX*

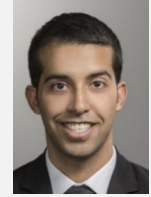
Ms. Venkatraj seeks to bridge the gap between the construction community and facility management community by developing a BIM-based tool that can be used to optimize material and energy consumption during the life-cycle of a facility. She is described as one of the strongest graduate students with a high level of self-motivation for getting the job done. Her thirst for knowledge and passion is shaping her career.



**Rachel Armstrong**

*Interior Design  
Iowa State University  
Winterset, IA*

Ultimately, Ms. Strong plans to explore the different possibilities as a professional interior designer. Understanding this field connects to various parts of facility management, architecture, construction and eco-conscious trends as she wants to become academically competent in these areas. Her confidence and positive nature will lead her to owning her own company one day.



**Mohammad Aldaaja**

*Construction Management  
(FM emphasis)  
Arizona State University  
Tempe, AZ*

Mr. Aldaaja believes facility management is a tool to keep communities working for future generations by applying concepts to reach a sustainable living. He constantly seeks ways to maximize his experience in everything he does. Working as a project engineer at King Salman International Convention Center in his country of Jordan, offers a unique perspective to FM projects and academic research

# IFMA Foundation Scholarship Winners

All winners attended 2018 IFMA World Workplace Atlanta, GA



*Yutian Chen*

*Construction Management  
(FM emphasis)  
Arizona State University  
Tempe, AZ*

Ms. Chen aims to exemplify a service-oriented, positive and dependable professional attitude. Growing up in a revolutionary period for China, she recognized the economic and industrial prosperity at the end of the 20<sup>th</sup> century. When asked what her future facility management aspirations are, she described how she wants everyone to see buildings as she does; as beautiful giants.



*Wai-lam William Wong*

*Facility Management  
Hong Kong Polytechnic  
University  
Hong Kong*

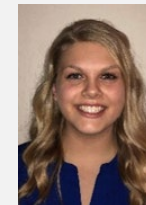
Ms. Xu aspires to be a driving force for the more popular high-tech systems and technologies that will improve the complex business and building combinations. Her internship and academic research experience attributes to her skills as a team leader, presenter, and strong team spirit. Ms. Xu is eager to learn and advance her academic training and practice in the field of facility management.



*Lacie Wiggam*

*Facilities Management  
IUPUI  
Indianapolis, IN*

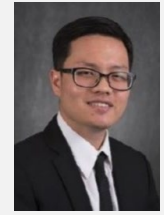
Ms. Wiggam has a passion for healthcare and finds value in managing facilities, especially hospitals. She seeks to pursue a Certified Facility Management® (CFM®) credential, as well as a certified Healthcare Facility Manager credential



*Jessie Theisen*

*Facility Management  
Ferris State University  
Lake, MI*

Ms. Theisen has a positive attitude with a determination to have a career in facility management and become professionally accredited by IFMA. His professor identifies him as an impressive combination of commitment, organization, and academic quality, while demonstrating a high degree of self-direction and confidence.



*Nguyen Le*

*Construction Management  
(FM emphasis)  
Arizona State University  
Tempe, AZ*

Mr. Le holds a 4.0 GPA while going to school and working full time as a graduate research assistant at Arizona State University. His fascination is with the form and space of buildings; the way the resources are planned and executed, and how various disciplines are managed under one roof. Mr. Le wants to foster international relationships to further the education of both current and future FM's.

# IFMA Foundation Scholarship Winners

All winners attended 2018 IFMA World Workplace Atlanta, GA



**Jelani Barro**  
Facilities Management  
New York City College of  
Technology  
Ozone Park, NY

Mr. Barro is goal oriented, handles stress effectively, well-organized, and punctual. He sees his FM career as challenging, very exciting, with never a same day twice in a row. He recognizes the profession as multifaceted, one that requires many disciplines including psychology, finance, engineering, and law; just to name a few.



**Deniz Besiktepe-Karaman**  
Construction Engineering  
and  
Management  
Colorado State University  
Fort Collins, CO

An architect by trade, Mrs. Besiktepe-Karaman is enthusiastic about finding solutions for the effective management strategies of facility management and building maintenance. The idea of being a part of the education side of construction makes her passionate about shaping society. Even before pursuing academics, she worked on several international projects.



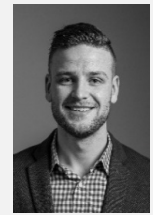
**Xiu Hong E Ng**  
Facilities Management  
Temple University  
Philadelphia, PA

Ms. Ng was recently elected as the vice president of the Temple University Facility Management Association (TUFMA). While pursuing her bachelor's degree in facility management she plans to follow her passion towards a real estate license as well as gain her professional credentials.



**Kevin Squadroni**  
Facilities Planning and  
Management  
Temple University  
Philadelphia, PA

Mr. Squadroni has a passion for priceless works of art. He finds satisfaction at the thought of housing master pieces in a museum or art institute. This goal includes keeping history safe for future artists through environmental and sustainable planning. It is the field of facility management that offers the chance to make his dream real.



**Brandon Wood**  
Architecture - Facility  
Management  
Conestoga College  
Brantford, ON

Mr. Wood was captivated by Lego®, sand castles, and how simple shapes become objects with meaning and purpose. He was recognized by a professor as demonstrating an ongoing commitment to the FM profession through his education and training. He has had the opportunity to work on several critical projects with the City of Calgary Facility Management Department.





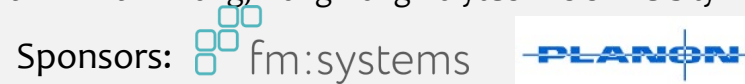
**Ignite FM Student Challenge** divides students into teams that are tasked to solve a complex problem in a set amount of time. Each team present their solutions to an audience. Judging is done by our Global Workforce Initiative Advisors along with FM professionals, with the winning team receiving a financial prize and recognition of their presentation.



## IFMA World Workplace, Charlotte, North Carolina, USA

Graham Tier, IFMA Chair (left) and Erik Jaspers, Planon (right)

The winners: Sungil Hong, Georgia Institute of Technology; Eva Buurma, Hanze University of Applied Sciences Groningen; Kevin Squadroni, Temple University; Varusha Venkatraj, Texas A&M University; Wai-lam William Wong, Hong Kong Polytechnic University



## IFMA World Workplace Europe Meets Facility For Future, Amsterdam, The Netherlands

Erik Jaspers, Planon (Right) and Deborah Rowland, Sodexo (Left)

The winners: Tessel Meeuwissen (missing), Haagse Hogeschool; Franziska Müller, Technische Universität Kaiserslauter; Tobias Burkhart, Technische Universität Kaiserslauter; Cas Verdonk, Breda University of Applied Science



## IFMA Facility Fusion Conference, Atlanta, Georgia, USA

Michael Schley, FM:Systems Founder and Past Chair IFMA Foundation (left)

The winners: Breanna Wolcott, Ferris State University; DeMarcus Means, Sr., Florida A&M University; Kaitly Clarey, Kennesaw State University



# IFMA Foundation Awards of Excellence

The IFMA Foundation is grateful for the support of volunteers. In 2018 the Foundation presented awards of excellence to individuals and organizations



**John Carey**  
VP Sales & Marketing  
Atlantic Relocation Services  
IFMA Houston Chapter

John has led the foundation's silent auction fundraising team for the past eight years, encouraging companies and the IFMA community to donate. He's been instrumental in raising more than 100-thousand dollars for the foundation. He's passionate about making FM a career of choice, and we're truly grateful that he's a part of our team.



**Phyllis Meng**  
IFMA Fellow, CFM, SFP  
President, Meng & Associates

Phyllis was key to the success of the Global Workforce Initiative pilot program at Chaffey College, which has led to over 65 Essentials of Facility Management Certificates. She's a beloved professor of Chaffey College's FM courses, and helped students launch a chapter one month after the FM program started. Phyllis has helped place students in internships, and two of her students received scholarships at IFMA World Workplace conference in 2018. Thank you Phyllis.



Two California-based IFMA chapters are a shining example of chapter collaboration in support of the Global Workforce Initiative. Together, they have hosted four annual wine-tasting events, benefitting the foundation. For jointly contributing 25-thousand dollars to support foundation programs, we recognized **the San Fernando Valley and Orange County Chapters of IFMA**. Your support is constant and appreciated.



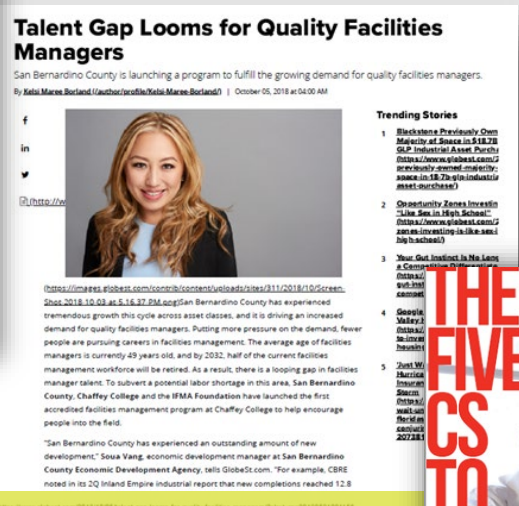
Five years ago, **the IFMA New York City chapter** held its first wine-tasting fundraising event. It was such a huge success, the idea spread among other chapters, establishing a hip way to raise much-needed funds for the foundation. Over the past five years, the chapter has raised more than 80-thousand dollars on our behalf. Thanks to you, we are able to provide much needed programs to students.

# Increasing the digital market and communication footprint to enhance FM awareness

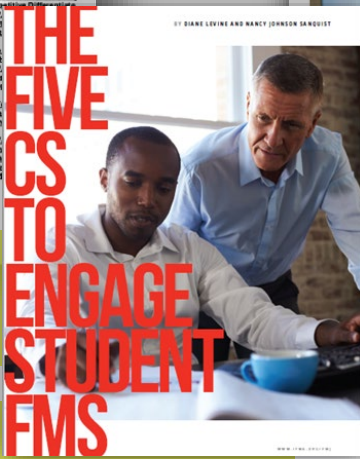
**FOR IMMEDIATE RELEASE:**  
IFMA Foundation and Doing What Matters launches new video to attract students to community college programs



**FOR IMMEDIATE RELEASE:**  
IFMA Foundation Announces the IFMA Facility Management Graduate (FMG) Designation and Digital Badge



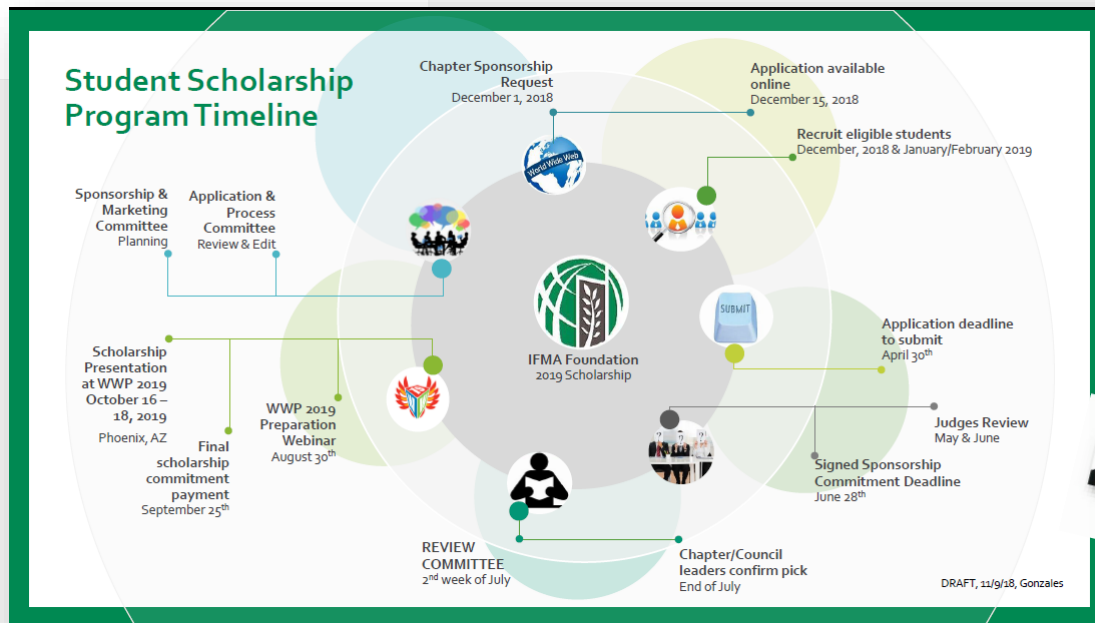
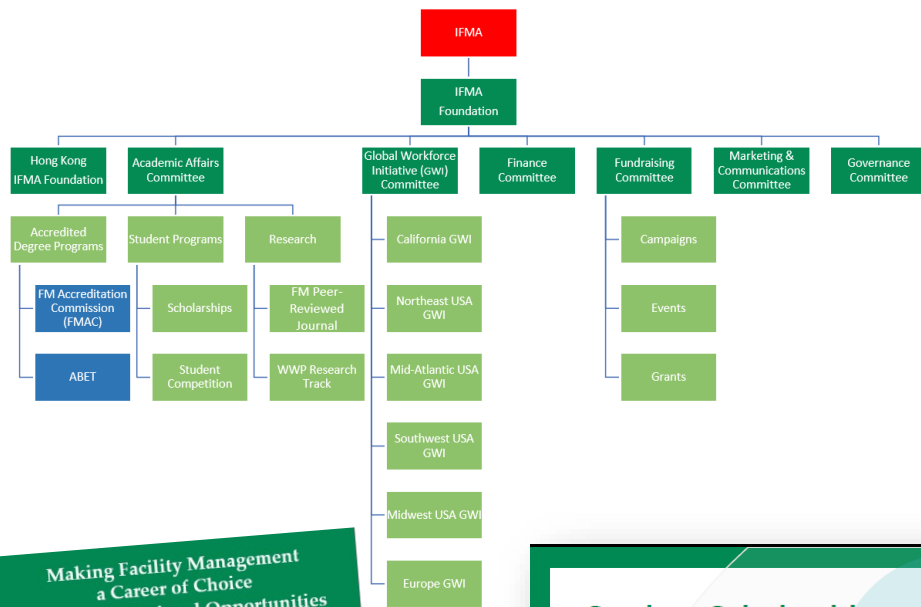
**FOR IMMEDIATE RELEASE:**  
IFMA Foundation Introduces New Training & Development Framework



**FOR IMMEDIATE RELEASE:**  
Sodexo and IFMA Foundation take the Women in FM Panel Series Virtual this July!

**FOR IMMEDIATE RELEASE:**  
IFMA Foundation Announces New Academic Recognition – The Registered Facility Management Program (RFMP)

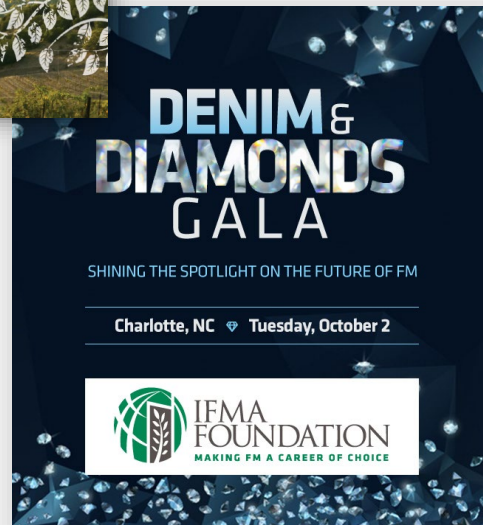
# Transparency & Organization



# Fundraising Activities

Let's Ignite FM! Help to raise money for the IFMA Foundation while having fun with friends.

## Past Events

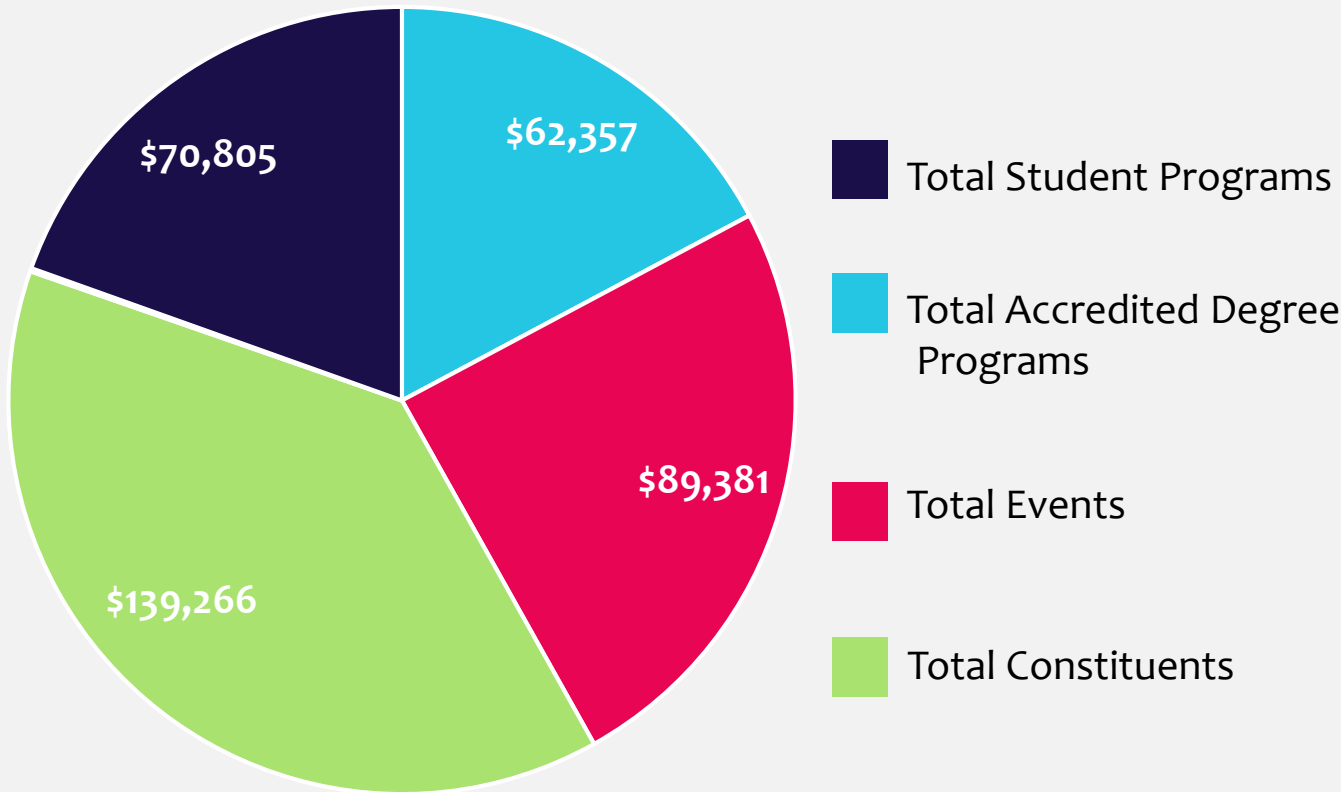


## Upcoming Events



# FY2019 Revenue

Details as of May 2019



**Jelani Barro**  
Facility Management  
New York City College of Technology  
Ozone Park, NY

“Becoming the winning recipient of the New York City Chapter of IFMA’s Worthy FM Student Scholarship gave me the financial confidence to apply to my grad school of choice while focusing on my studies to complete my final year at NYC College of Technology. Attending the IFMA World Workplace 2018 Conference in Charlotte, NC provided me a chance to meet FM professionals and IFMA Fellows. **I am grateful to the IFMA Foundation and the Chapters, Councils and Community who help make my personal goals closer to a reality.** I would encourage any student seeking a facility management career to apply for this unique and meaningful experience.”

Airport Facilities Council of IFMA  
Atlanta Chapter of IFMA  
Capital Chapter of IFMA  
Dallas / Fort Worth Chapter of IFMA  
Denver Chapter of IFMA  
East Bay Chapter of IFMA  
Eastern Iowa Chapter of IFMA  
Greater Triangle Chapter of IFMA  
Hong Kong Chapter / Bernice Cheng  
Houston Chapter of IFMA  
Indianapolis Chapter of IFMA  
New York City Chapter of IFMA  
Philadelphia Chapter of IFMA  
Seattle Chapter of IFMA  
Southeast Wisconsin Chapter of IFMA  
Suncoast Chapter of IFMA  
Utilities Council of IFMA  
West Michigan Chapter of IFMA

# Thank You

## 2018 Student Scholarship Sponsors

Boston Chapter of IFMA  
Capital Chapter of IFMA  
Central Ohio Chapter of IFMA  
Central Valley Chapter of IFMA  
Charlotte Chapter of IFMA  
Central Ohio Chapter of IFMA  
Chesapeake Chapter of IFMA  
Chicago Chapter of IFMA  
City and Country Clubs Council of IFMA  
Facility Management Consultants Council (FMCC) of IFMA  
Greater Phoenix Chapter of IFMA  
Hawaii Chapter of IFMA  
Houston Chapter of IFMA  
Indianapolis Chapter of IFMA  
Nevada Chapter of IFMA  
New Mexico Chapter of IFMA  
New York City Chapter of IFMA  
New York Tech Valley Chapter of IFMA  
Northeast (NE) Wisconsin Chapter of IFMA  
Orange County Chapter of IFMA  
Orlando Chapter of IFMA  
San Fernando Valley Chapter of IFMA  
Silicon Valley Chapter of IFMA  
Westchester County Hudson Valley Chapter of IFMA  
Workplace Evolutionaries (WE) Community of IFMA

# Thank You

IFMA Chapters  
IFMA Councils  
IFMA Communities



A&A Maintenance  
ABM  
Alliance Environmental Group  
C&W Services  
Diversey  
DPPM Project Management Consulting  
FM:Systems  
Grier Interiors  
GROW  
ISS  
Kimball Office  
Marsden West  
Milliken  
Netsphere Solutions Limited  
Planon  
Sempra Employee Giving Network  
Sodexo  
St. Moritz Security Services  
Staples Advantage  
Tennant Company  
Wolcott Architecture Interiors

# Thank You

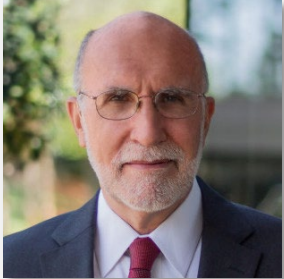
Corporate and  
Organization  
Donors

Alexi Marmot  
Andrea Sanchez  
Annemarie Kis-Horvath  
Carlos A. Padron  
Carlos Santamaria  
Case Runolfson  
Chris Hansen  
Corey Lawson-Enos  
Cynthia Clayton  
Dallas Schwerin  
David W Smith  
Dean Stanberry  
Deborah Rowland  
Diane Levine  
Edmond P. Rondeau  
Eileen Anne McMorrow  
Erik Jaspers  
Gaham John Tier  
Irene Thomas-Johnson  
Israel Rodriguez  
Joseph Archie  
Joseph Dittberner  
Julie Robinson  
Laura Shaw  
Leah York  
Michael and Karen Schley Foundation  
Michael K. Redding  
Michele M. Gregg  
Nancy Sanquist  
Paige Butterfield  
Pat Turnbull  
Regina Ford-Cahill  
Richard Echevarria  
Robert Dills  
Samson Lee  
Sempra Employee Giving Network  
Tony Piucci

# Thank You

## Individual Donors

# Board of Trustees



**Michael Schley, IFMA Fellow**  
*Past Chair, IFMA Foundation*

Mr. Schley is recognized globally for his expertise in Facility Management technology and has spoken at numerous conferences throughout the world including Facility Management conferences in Australia, China, Singapore, Hong Kong, Malaysia, Zurich, Amsterdam and numerous conferences in the United States. He has led several significant industry standards efforts including serving as Chair of the AIA CAD Layer Guidelines Task Force, and co-chair of the IFMA Area Measurement Task Force. He also organized and chaired the Workplace Strategy Summit conference held at Cornell University in 2012 and in the UK in collaboration with University College London in 2014.

Mr. Schley was recognized by the International Facility Management Association as an IFMA Fellow in 2008, one of fewer than 110 individuals so honored. He served as Chair of the IFMA Foundation, the organization that oversees the Facility Management Accredited Degree Programs throughout the US, Europe and Asia. While leading the IFMA Foundation's Knowledge Management Committee, he oversaw the publication of three books including the ground-breaking BIM for Facility Managers publication. He has also been a Visiting Lecturer at Cornell University teaching the course "BIM for Facility Management" and serves on the FM advisory board at Georgia Institute of Technology.

Mr. Schley has a Master of Architecture degree from the College of Architecture at North Carolina State University and a Bachelor of Arts degree from Case Western Reserve University.



**Nancy J. Sanquist, IFMA Fellow**  
*Chair, IFMA Foundation*

Nancy J. Sanquist, an IFMA Fellow, is a professional involved with the built environment for the last few decades. She currently serves as the Chair of the IFMA Foundation with which she has worked with the last five years. She is a co-founder of the Global Workforce Initiative (GWI) and the Workplace Evolutionaries, and is the author of numerous books and articles on FM, technology, architecture, urban planning and maintenance including the award-winning book series titled "Work on the Move."

Nancy has worked for the leading global FM and real estate technology companies, as well as teaching at University of San Diego, UCLA, Lafayette and Muhlenberg Colleges. Over the years she has worked with governments and corporations in the US, Canada, UK, Sweden, Norway, the Netherlands, France, Germany, Japan, Hong Kong, and Australia. She holds degrees in architecture, urban planning, historic preservation and art history from Columbia University, Bryn Mawr College and UCLA. She has also served on the Boards of the Schindler House and the Del Mar Village Association.

# Board of Trustees



**Joe Archie**

*First Vice Chair, IFMA Foundation*  
Director of Campus Operations,  
Loyola Law School | Los Angeles

Joe Archie has more than 35 years of experience in facility management and corporate real estate. As the Director of Campus Operations his responsibilities include; space planning and design, construction, facility maintenance, and campus security. His team includes a facility maintenance team, graphics specialists, and security professionals. He oversees contracted suppliers from engineering, architecture and many other trades.

Before joining the Loyola team, Joe worked for AT&T managing a Facilities Maintenance team covering the Los Angeles County division. He was responsible for a portfolio of 90 buildings covering 7 million sq. ft. of administrative, call center, network switching, and data centers. Prior to this assignment he was the Associate Director for Technical Planning & Operations supporting the Consumer Call Centers across the State of California.

A dedicated IFMA member, Chapter Leader (Los Angeles 2011-2014) and IFMA Foundation Board of Trustee (2015 – present). Joe continues to dedicate his time and fund raising energy and leadership skills to the Global Workforce Initiative mission of the IFMA Foundation.



**Tony Piuci**

*Second Vice Chair, IFMA Foundation*  
Senior Vice President, ABM

Tony Piucci brings over 30 years of Facility Management experience to ABM Industries, a leader in Facility Management Services for over 100 years. Tony has held numerous roles at ABM from Operations, National and International Sales, and Strategic Account Management for ABM's most prestigious accounts. Tony handles ABM's Commercial Real Estate, Financial and Retail clients.

He is a member of IFMA Chicago, BOMA and Corenet and has spoken at numerous industry functions such as MIPIM, IFMA and BOMA's annual conventions.

As a member of The IFMA Foundation's Board of Trustees, he has served as Second and First Vice Chair and sits on the Executive Committee.

Tony graduated from Marquette University's College of Business Administration and lives in Naperville, IL with his wife and three children.

# Board of Trustees



**Peter Ankerstjerne MBA, COP,  
FRICS, IFMA Fellow**  
*IFMA Second Vice Chair*  
SVP, Head of Digital FM and  
Workplace Experience, EMEA  
WeWork

Peter has more than 25 years experience covering most aspects of facility management, service management, outsourcing, marketing and strategy development. For 24 years Peter was employed by the ISS group, where he most recently served as Chief Marketing Officer. At ISS, Ankerstjerne was responsible for developing the Integrated Facility Services (IFS) model, which is still a key strategic focal point of the organization and represents more than 40% of revenue. Before leaving ISS, he was responsible for developing their Workplace Experience strategy.

In April 2019, Ankerstjerne joined WeWork as SVP, Head of Digital FM and Workplace Experience for the EMEA region. He is the author of 10 industry white papers and co-author/editor of six white books as part of the ISS 2020 Vision Series on the future of FM, developed in a collaboration with IFMA and the Copenhagen Institute for Future Studies. He is an active member of the IFMA WE Community, where he has been instrumental in establishing the WE Denmark hub.

Ankerstjerne holds an MBA and bachelor's degree in International Marketing Management from the Copenhagen Business School in Denmark. He has served on several advisory boards, including the Advisory Board for International Business Development at Copenhagen Business School and the Strategic Advisory Board at the International Association of Outsourcing Professionals (IAOP). He was part of developing the IFMA Regional Advisory Board strategy and has been critical in establishing the European Advisory Board on which he still serves.



**Irene Thomas Johnson, CFM**  
Senior Vice President, JLL

Currently, Irene is the Senior Vice President, for JLL and is responsible for the development and presentation of winning solutions for clients, including plant operations, project management, capital planning, real estate administration, and brokerage. These solutions include development of the organization staffing model, identifying detailed savings and improvement plans, technology solution, service delivery processes, tools and the financial analysis, and transition that demonstrates the value proposition to our clients.

Irene's career spans over 25+ years of management and during this time she has had consistent leadership advancement and has earned a reputation as an industry expert in corporate real estate and integrated facilities management. Irene has a strong and well-rounded background combining nearly 25 years of management, construction, retail, business, and education. She believes in excellence and has always dedicated her talents and creative abilities to ensure the successful accomplishments of company goals.

# Board of Trustees



**Deborah Rowland**  
Director Public Sector Services  
Affairs for Sodexo

Deborah co-ordinates the public sector activities for Sodexo and manage government relationships in the UK.

Strategic and operationally experienced property and facilities management Director with over 30+ years practice in private and public sectors. An industry thought leader demonstrating best practice in service delivery and asset management, leading business transformation and developing new policy for FM and construction. Raising the bar in professionalism and leading by example to make FM a career of choice.

Deborah was previously Director Facilities Management for the Ministry of Justice and prior to that was Head of FM Policy and Strategy in the Cabinet Office. She developed an FM Strategy with central government departments across a spend of £3.2bn for the central government estate to drive out efficiencies. During her time in government she completed the Major Projects Leadership Academy programme at Oxford Said Business School.

Deborah led the Government Soft Landings (GSL) policy which was an objective of the Government Construction Strategy to align construction and design with those that use, operate and maintain them. This forms part of Building Information Modelling (BIM) Level 2 which has been mandated for central government and was a member of the UK BIM Task Group.



**Alexi Marmot**  
Professor of Facility and  
Environment Management,  
University College London

Alexi is an architect and planner whose career spans professional practice, writing and academia. Born and raised in Australia, she received her postgraduate education at University of California Berkeley, before making the UK her home.

At UCL, University College London, she is Professor of Facility & Environment Management and Director of the Bartlett Global Centre for Learning Environments, based in the internationally highest-ranked school of Architecture & Built Environment (QS 2019 global rankings). She is also Professor of Architectural Science in the University of Sydney.

Alexi is founding director of London-based practice, AMA Alexi Marmot Associates, experts in evidence-based consultative design for workplaces, educational estates and cultural buildings. Many large national and international organisations in public, private and voluntary sectors have benefited from AMA's strategic advice and designs for sustainable and effective environments that benefit people, organisations, society. She is author of *Office Space Planning: Designing for tomorrow's workplace* (McGraw-Hill) and *Understanding Offices* (Penguin) with Joanna Eley.

She is a Governor of WMC, the oldest extant European college of adult education.

Alexi is a passionate advocate of the importance of FM in sustaining our cities, our schools, workplaces and homes - thereby helping to create a good society.

# Board of Trustees



**Bob Dills**  
Vice President  
Western Allied Mechanical, Inc.

Bob Dills owns Western Allied Mechanical with a group of partners, where he serves as Vice President and Treasurer. Western Allied is located in Menlo Park, CA and is a leading provider of commercial and industrial air conditioning systems and services throughout the San Francisco Bay Area.

Beyond his service as an IFMA Foundation Trustees, Bob is a highly engaged member of the Silicon Valley Chapter and is a past chapter president. He also co-founded the GROW Organization, a 501©3 public charity encouraging young adults to explore careers in the built environment professions, providing them with internships, scholarships and mentoring.

On the personal front, Bob has enjoyed 38 wonderful years of marriage to Melissa, and they have three daughters and three young grandsons. He has an enduring love of the outdoors; fly fishing and motorcycling are his favorite recreations.



**Andrea Sanchez**  
Executive Director  
SparkStory, LLC

Andrea Sanchez is the executive director of SparkStory ([www.sparkstory.co](http://www.sparkstory.co)). She empowers both entrepreneurs and businesses with tools and strategies as they go through organizational change, giving them the courage to tell their unique stories. With more than 20 years of executive communications, marketing, change management, editing and writing experience, coupled with a profound passion in leadership, she believes that success comes from authentic self-packaging.

Andrea blogs regularly on Medium as editor-in-chief of WORTHY, and hosts the weekly Twitter chat #DareToBe every Tuesday at 8 p.m. ET as @asanchez16 to give others the courage to be themselves. Prior to founding SparkStory, Andrea worked at IFMA overseeing the association's communications, marketing, FMJ magazine, knowledge strategy, research, social media and change management.

As a volunteer, Andrea is presently on the board of the IFMA Foundation and is chair of the Houston's Writers Guild board. She is a huge animal lover and also assists at her local animal shelter. Andrea is married with three children and three dogs.

# Board of Trustees



**Regina Ford Cahill**  
Chairperson, Construction and  
Facilities Management  
Pratt Institute

Regina Ford Cahill, MS, is the Facilities Management program chair. Regina holds a Master's Degree in Facilities Management from Pratt Institute and a Bachelor of Science in Occupational Therapy from S.U.N.Y. at Downstate Medical Center. She has twenty-five years of professional experience as a manager of recreational, educational, and economic development programs, as well as facilities management.

She has been in higher education since 2008. First, at Technical Career Institutes in New York City where she oversaw an associate degree program in Facilities Management with five other majors. While she was at TCI, the program received Provisional Accreditation from the IFMA Foundation. Additionally, Regina worked on the Accreditation Team for the college's Middle States Commission on Higher Education.

As of 2014, Ms. Ford Cahill has been at Pratt as Chair of the program in Construction Management and the graduate program in Facilities Management. Ms. Ford Cahill has a long history working in her Brooklyn community; serving on Park Slope Civic Council, Community Board 8 and as President of the North Flatbush Avenue Business Improvement District. As a 45-year resident of Prospect Heights, she has seen the world from her window.



**Samson Lee**  
VP, Facilities Operations  
AllianceBernstein

Samson's background is Building Services Engineering with 30+ years of working experience including Design, Consultancy, Operations & Maintenance, Project Management, Contract Management and Facility Management.

He is with AllianceBernstein Hong Kong Ltd. and Vice President of Asia Pacific on Strategic Planning and directing the development and coordination of facilities operations throughout the region. He pioneered the corporation's global transformation goal on office workplace and completed the pilot project for their Hong Kong Office in 2017, which led to winning of the IFMA Asia-Pacific Best Facility Management Strategy Award. Samson was also honoured with the IFMA Asia-Pacific Facility Manager of the Year 2018.

Samson was Past President of the IFMA Hong Kong Chapter and led the chapter to glory by winning IFMA's Award of Excellence 2016 on "Large Chapter of the Year" and "Large Chapter Web Communications". He is currently Trustee of IFMA Foundation and Founder Member/Director of the IFMA Foundation Hong Kong Ltd.



# Board of Trustees



**Case Runolfson**  
Senior Director, Facility  
Management Department  
American Institutes for Research

Case has worked in widely diverse work environments in the U.S. and internationally in the field of facilities management (FM) for over 25 years with the goal of advancing the two most impactful assets of an organization: the workforce and the workplace. His focus has been on the application of metrics and process in an environment that encourages professional development while emphasizing the role of Facilities Management in strategic planning.

A graduate of the U.S. Naval Academy, he served as a Marine Officer. He transitioned to a career in Facilities Management with his first job as the Administrative Officer for the Northeastern U.S. Region for the U.S. Trustees Program, DOJ. Since then he has worked for the State Department and major firms in the industries of: the practice of law, telecommunications and, health and education research.

In 2005, Case joined AIR (one of the largest nonprofit organizations in health and education research) and in that time he has focused on creating a process-centric work environment, emphasizing the value of metrics, professional development and implementing succession training for staff. In his department of 36 staff, he oversees the leases and operations and maintenance for AIR's real estate portfolio of US and international offices as well as budget development and management, space planning, construction, office support and production services to over 2100 employees.

As a member of IFMA, Case was the 2014-2015 President for the Capital Chapter of IFMA, in Washington, DC.. As chair of the Scholarship Committee, Case promotes the participation of IFMA Councils, Chapters and industry partners.FM professionals. He is a member of Facilities Management Accreditation Commission, receiving his ABET Program Evaluator certification this year.

# Incoming Trustee FY2020



**Laurie A. Gilmer, P.E., CFM, SFP,  
LEED AP, CxA**  
Vice President / COO  
Facility Engineering Associates.

Laurie Gilmer is the newly elected 2<sup>nd</sup> Vice Chair of IFMA as of July 2019. Her primary areas of expertise include facility systems assessments, energy management, sustainability and facility management organizational analyses. Her leadership at FEA has allowed her to positively influence their clients' growth and knowledge of improved asset management.

Gilmer is a published author and she co-authored IFMA's second manual in the Sustainability How-to Guide Series, "EPA's ENERGY STAR Portfolio Manager." She has been instrumental in raising awareness for the ENERGY STAR program through the IFMA Energy Challenge, most recently contributing energy analysis to IFMA's 2017 O&M Benchmarking Report.

Currently serving on the Northwest Energy Efficiency Council's Building Operator Certification program advisory committee, Gilmer was the committee's first chair. She is also a member of the National Visiting Committee of Building Efficiency for a Sustainable Tomorrow (BEST).

Gilmer is an IFMA qualified instructor for IFMA's Sustainability Facility Professional® (SFP®), Facility Management Professional™ (FMP®) and Certified Facility Manager® (CFM®) programs. She is past chair of IFMA's Sustainability Facility Credential scheme committee.

# Incoming Board of Trustees FY2020



**Carlos Santamaria**, RPA, MBA, LEED AP  
FM Statewide Liaison – CCCCCO  
Principal, CEES-Advisors

Carlos Santamaria brings engineering principals, theoretical design, and field evaluation to workforce development efforts. He has extensive experience in implementing operational best practices, energy efficient and major system upgrades that includes energy management systems, electrical systems, HVAC systems and building envelop systems.

He has conducted over 200 building evaluations, commissioning and assessments in buildings across the US and in China. Currently focusing on Tall Building Energy Efficiency Opportunities. Carlos conducts ASHRAE LII Energy Assessments in over 150 Tall Buildings across the US. Carlos provided the Energy Assessment for the 2nd Tallest Building in the World, The Shanghai Tower.

Working as SME and Deputy Sector Navigator – Regional Director representing 28 colleges in the Bay Area Region as it relates to Facilities Management, Facilities Maintenance and Energy Efficiency Workforce Development Programs. Carlos joins the 2019/2020 IFMA Foundation Board of Trustees bringing globale experience and new energy to the work.



**Pat Turnbull**, MA, LEED AP, IFMA Fellow  
President | COO  
Workplace IQX

Pat founded Workplace-IQX in recognition of her passion around strategic, organizational and workplace design as important drivers in shaping corporate culture, amplifying human performance and accelerating enterprise success. WP-IQX helps businesses link vision, strategy, brand and space (physical & virtual) in order to deliver exception user experiences (UX) and enhance business results.

Pat uses a collaborative approach, business analytics, workplace strategy, technology and creative communication / change management techniques to unite leadership and staff around goals and to assure acceptance of the vision and change process. She excels in developing multi-level communication plans to support change management, marketing and brand development, internal / external messaging and stakeholder engagement.

Pat has focused her career on contributing to a more productive and sustainable Built Environment as well as to advancing the Facility Management/Real Estate profession. She earned a Master's Degree in business administration and organizational change (BAOC) from University of California, Los Angeles (UCLA). She is a Leadership in Energy and Environmental Design Accredited Professional (LEED AP) as designated by the US Green Building Council and was honored as a 'Fellow' of the International Facility Management Association (IFMA Fellow).

First IFMA Foundation outside United States to promote FM as career of choice



## Board of Directors of IFMA Foundation (Hong Kong)



**Mr Samson LEE,**  
Past President  
(2015-2017) IFMA  
Hong Kong  
Chapter,  
Foundation Trustee  
IFMA Foundation



**Mr Jon SELLER,**  
Past President  
(2004-2005) IFMA  
HK Chapter,  
Past Chair (2013-  
2014), IFMA Global  
Board



**Mr David REES,**  
Past President  
(1999-2000) IFMA  
HK Chapter



**Mr Tony  
GARLAND,**  
Past President  
(2007-2009) IFMA  
Hong Kong Chapter



**Ms Arnald NG**  
IFMA Qualified  
Instructor



**Ms Natina WONG**  
Past Director of  
IFMA Hong Kong  
Chapter

# IFMA Foundation Staff



**Diane Levine, MCR**  
Executive Director  
M: (562) 499-8998  
P: (281) 974-5620  
diane.levine@ifma.org

Diane has been a driver of workplace strategy within the facility management community for more than 25 years. She is a cofounder of IFMA's Workplace Evolutionaries community and the IFMA Foundation Workplace Strategy Research Summits. She is also an award-winning co-editor and author of the "Work on the Move" book series and has written numerous articles and white papers on workplace strategy, change management and business continuity planning. She recently completed a three-year term on IFMA's global board of directors.

Diane is a sought-after speaker who has guest lectured at MIT and the Vienna University of Technology. She has been actively involved in the IFMA Foundation as a Trustee and Past Chair and is one of the pioneers of the foundation's Global Workforce Initiative. Diane is passionate about the future of FM and furthering the mission of the IFMA Foundation - making FM a career of choice.

She holds a Bachelors of Science Degree in Business and Management from University of Redlands, an MIT Certificate in Business Continuity Planning, a Certificate in Facilities Management from University of California, Irvine and the CoreNet Masters in Corporate Real Estate (MCR). Diane has won many awards including the IFMA George Graves Award for Facility Management Achievement, a CoreNet Southern California Remmy, and a CREW Southern California SPIRE award and she was named a Southern California Real Estate Woman of Influence.



**Christina Gonzales**  
Program Support Specialist  
M: (619) 777-3492  
P: (281) 974-5651  
christina.gonzales@ifma.org

Christina arrived to Houston, Texas over a year ago seeking a challenging and rewarding opportunity. She is an experienced nonprofit administrator, community organizer, grant development, and has a competitive entrepreneurial spirit.

As a recruitment and development director for the Institute for Clinical Social Work, she built a strategic marketing and recruitment plan that doubled the number of PhD candidates. As an community organizer she was successful in creating community-based organizations that allowed residents to work collectively to address issues impacting the quality of their lives.

Christina has attended National Louis University where she received her Masters in Business Administration. Her capacity to work with a diverse group of people, strategic thinking and creative attitude is an positive addition to the IFMA Foundation.

# Follow us

Let's Ignite FM!  
Help Spread the Word

<http://www.ifmafoundation.org>

[linkedin.com/company/ifma-foundation](https://www.linkedin.com/company/ifma-foundation)

[twitter.com/FMFoundation](https://twitter.com/FMFoundation) @FMFoundation

[facebook.com/IFMA Foundation](https://www.facebook.com/IFMA.Foundation)



We are proud of our Global Workforce Initiative (GWI) partners and advisors who make it possible to shape the future workforce

