



ABRITES

Commander for

PEUGEOT CITROEN

User Manual

Version:

1.1

issued by: Abritus 72 Ltd.

List of Revisions			
Date	Chapter	Description	Revision
19.Oct.2010	ALL	First version of the document.	1.0
22. Oct.2010	1	Added information for 25-to-25 pin adapter	1.1
	2.1	Clear Fault log	1.1

CONTENTS

1 INTRODUCTION

“ABRITES Commander for PEUGEOT / CITROEN” is a Windows PC based professional diagnostic software for vehicles from the PEUGEOT / CITROEN group. With the help of this software you can perform complete diagnostic operations of all CAN-based vehicles from the PEUGEOT / CITROEN group, which are in most cases unsupported from the producer diagnostic testers. The “ABRITES Commander for PEUGEOT / CITROEN” provides also standard diagnostics (read faults, erase faults) for PEUGEOT / CITROEN vehicles.

This user manual covers the functionalities of “ABRITES Commander for PEUGEOT / CITROEN” ver 3.1

Diagnostics is performed via the OBD-II connector . Diagnostic interface currently supports K-Line and CAN-BUS interface.

Depending of the hardware revision of the Abrates interface used, it might be necessary to use additional 25-to-25 pin adapter that allows older interfaces to perform diagnostics on peugeot/citroen cars. If the Commander detects **only** Engine Control unit via CAN you probably need this adapter so bus please contact abritus72 for delivery;

2 VEHICLE DIAGNOSTICS WITH “ABRITES COMMANDER FOR PEUGEOT / CITROEN”

The “ABRITES Commander for PEUGEOT / CITROEN” consists basically of two parts:

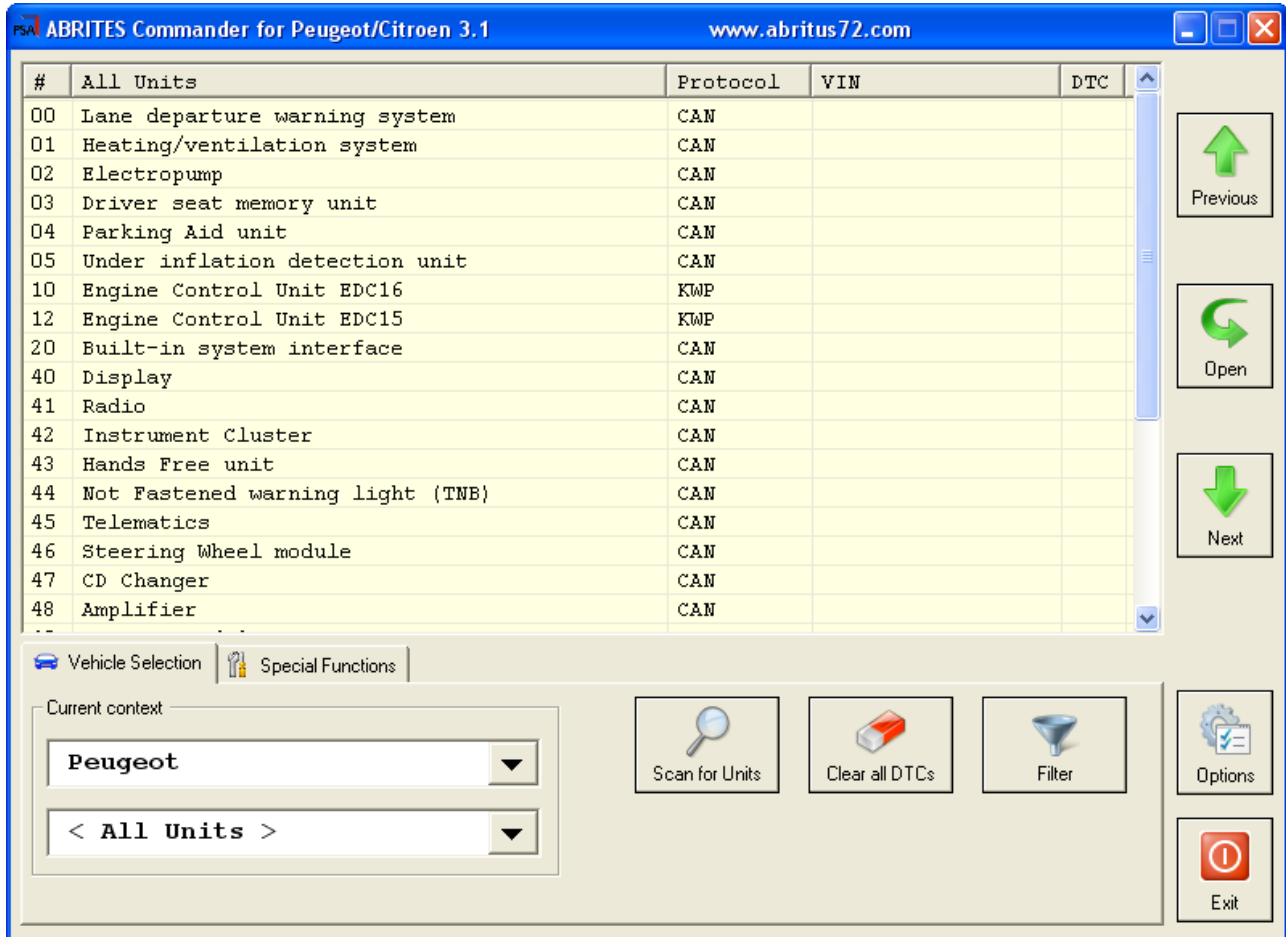
- Standard diagnostic functions like reading/clearing fault codes (DTC), scanning for available devices in the car.
- Special functions like Reading Security Code (PIN), Key Learning, Odometer Correction and Dump Tool.

Supported vehicles by “ABRITES Commander for PEUGEOT / CITROEN”

- Peugeot 207
- Peugeot 307 2005
- Peugeot 308
- Peugeot 407
- Peugeot 607 2006+
- Peugeot 807 2006+
- Peugeot Partner 2008+
- Citroen C2
- Citroen C3 2005+
- Citroen C4
- Citroen C5 2007+
- Citroen C6
- Citroen Berlingo 2008+
- Older vehicles with EDC15 engine ECU

2.1 Standard Diagnostics

From the main window of the program you can see a complete list of all supported device and two tabs below it – for vehicle selection and special functions.



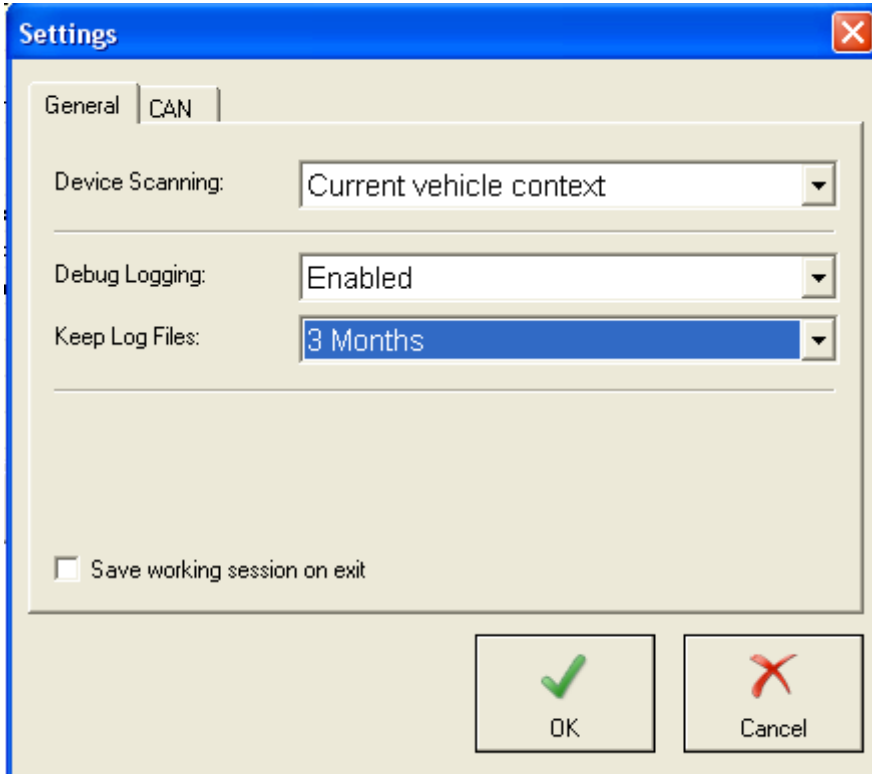
If you want to filter only the devices specific for a defined vehicle you can select a car brand i.e. Peugeot or Citroen and a specific model of this brand. This will show you all the devices that might be present in the selected car. This doesn't mean that all of them are really available – it depends on the level of equipment of the current car and the extra options ordered by the customer.

If you want to filter only the devices present in the current vehicle – click “Scan For Units” button. After a while the device list will be populated only with present ECU's with DTC's retrieved for each of them. In the vehicle context drop down box is visible < Scan Result >. You can return to all units view by selecting < All Units > or filter the specific for a defined model units by selecting model directly.

Clicking the button Clear All DTC's will erase all stored faults in all units if possible.

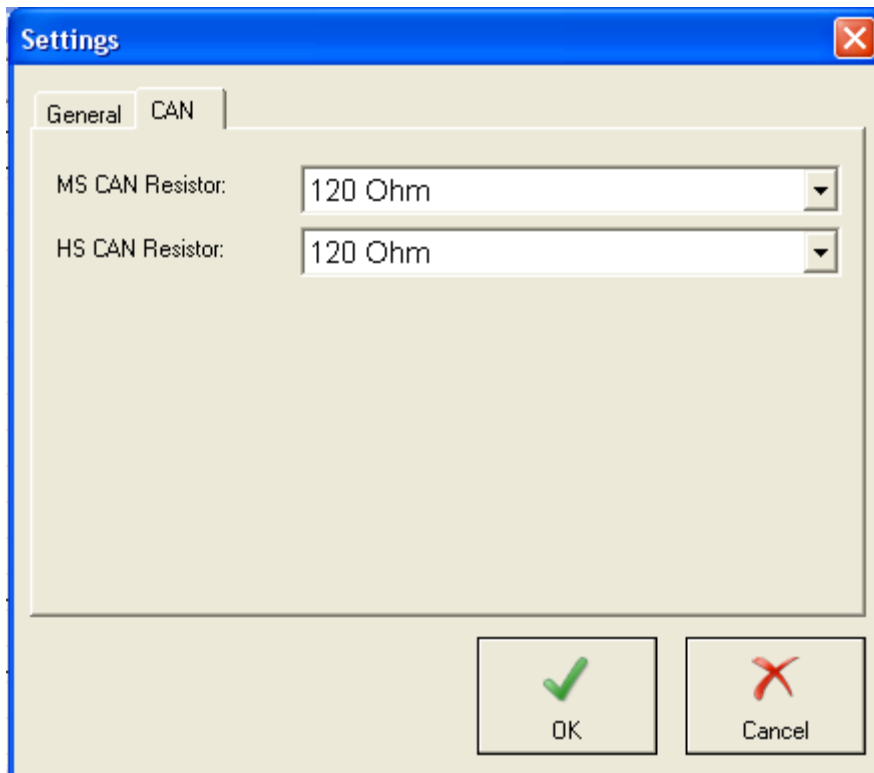
If you want to find specific device by name click “Filter” button and type part of the device name in the input dialog .As a result the list of devices will have only those of the devices that contain the keyword entered. In this case vehicle context is switched to < Filtered >, so if you want to return to all units view or select supported units for a specific car you have to select it through vehicle context drop down box.

Settings can be adjusted by clicking “Options” button from the main program window:

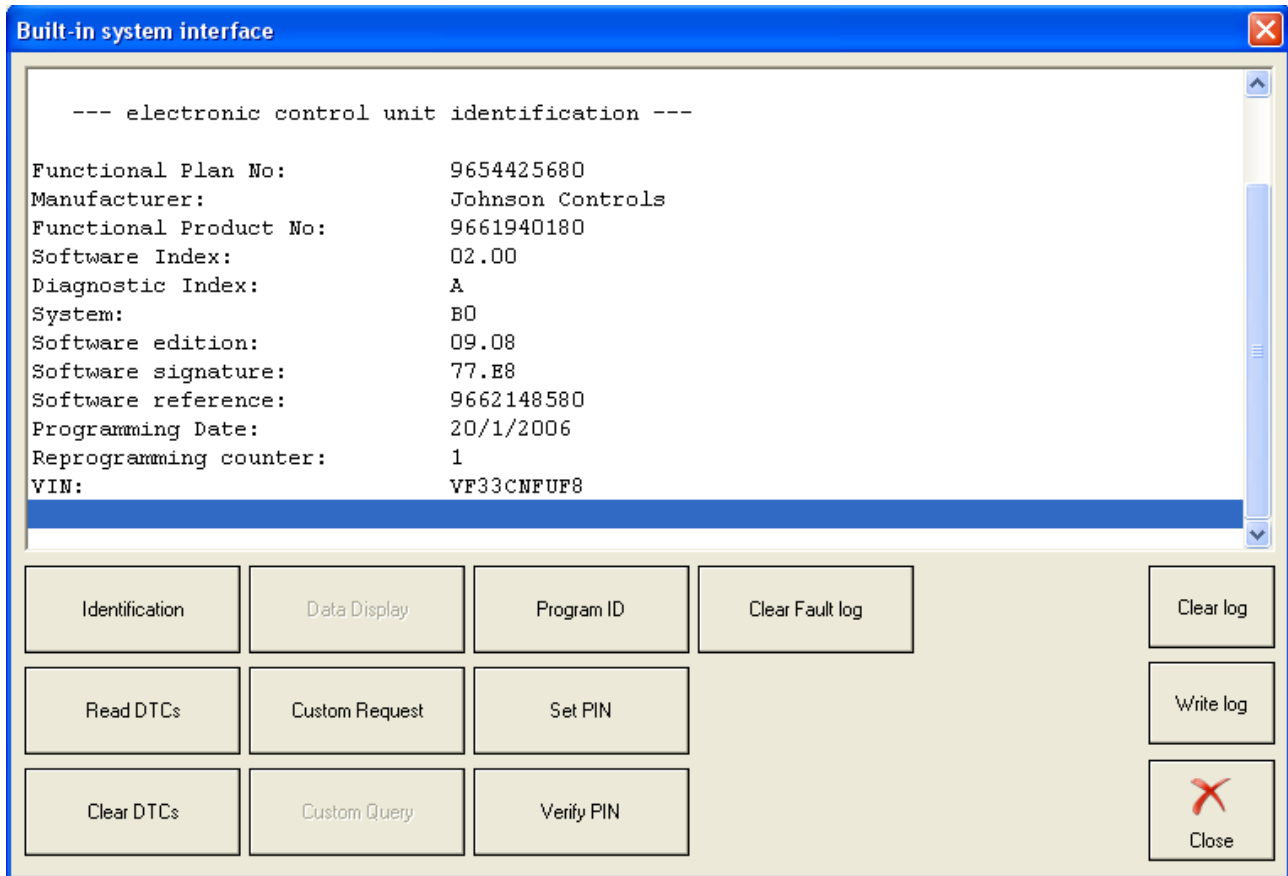


Device scanning: “Current vehicle context” search units only specific for the currently selected vehicle, “All devices/on CAN/on K-Line” search available units in all possible units.

There is an option for enable/disable log files and selection of the period for their preservation. Second tab contains CAN resistor selection that in general don't have to be changed



If you want to connect to a specific device just double click on the device from the list. A dialog with identification information is shown.



Available actions are:

- retrieving identification again
- reading/clearing DTC's
- sending custom messages

In case of BSI device there are a few more actions:

- programming ID (VIN)
- setting PIN - setting a new pin is possible only if you had previously entered/verified a valid PIN of in case of a virgin device
- verifying PIN code – checks if the provided Pin code is the same as the PIN code stored in the car
- Clear Fault log – erase fault log stored in the BSI (independent from DTC's)

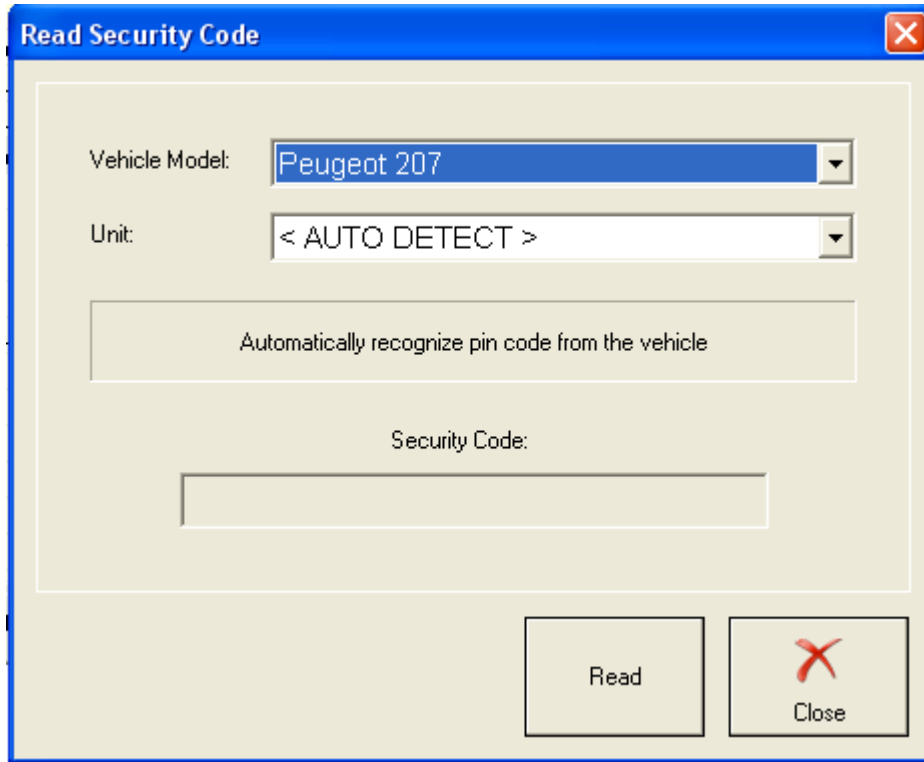
2.2 Special Functions

The appropriate special function is opened by selecting it from the list box and double-clicking on it, or by selecting it and then pressing the "Open" button.

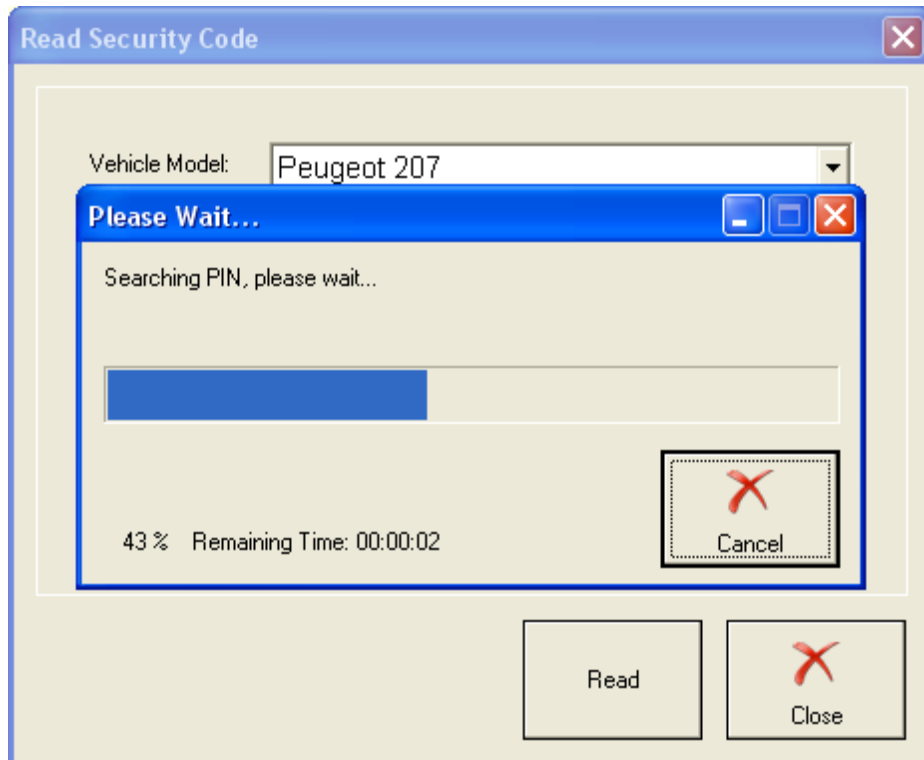
2.2.1. Read Security Code

Security Code (PIN) is 4 symbols code that is requested for Key learning and vehicle configuration modifications. In order to start this special function, click on "Read Security Code" icon in special functions section.

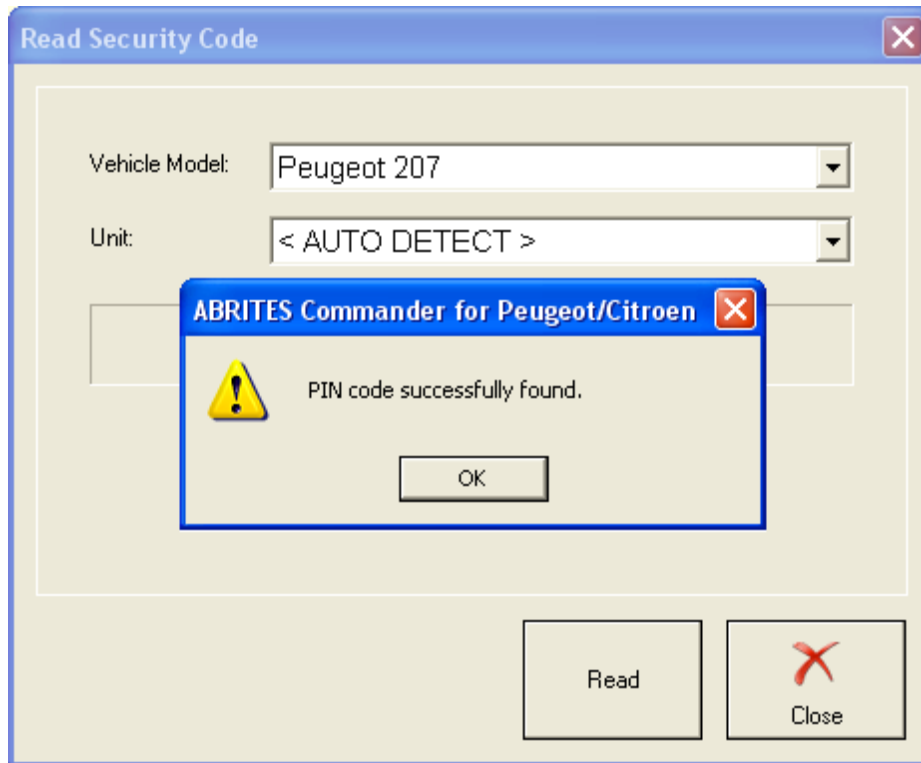
After ReadSecurityCode dialog is opened, select the vehicle and the unit. If you're not sure which is the car model or there are errors retrieving the PIN – set it to “Peugeot 207”. If you're not sure about the unit or there are errors while retrieving the PIN leave it to “< AUTO DETECT >”. Keep in mind that Auto detection additionally increase the operation duration.



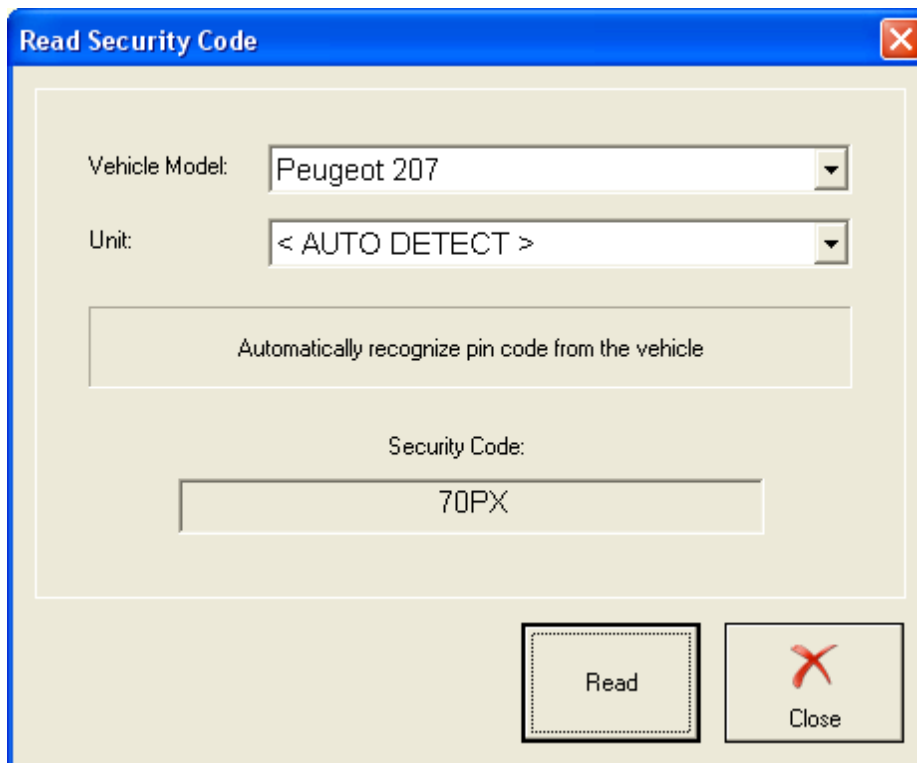
Click on the Read button and wait till the operation finish.



Note that PIN search always starts with checking the PIN reading capabilities that may take up to 20 minutes. Some BSI's require some additional specific operations to be performed – this is “Working on BSI” phase – up to 20 minutes. At the end the following message should appear:



Click OK to see the PIN code in the field Security Code:



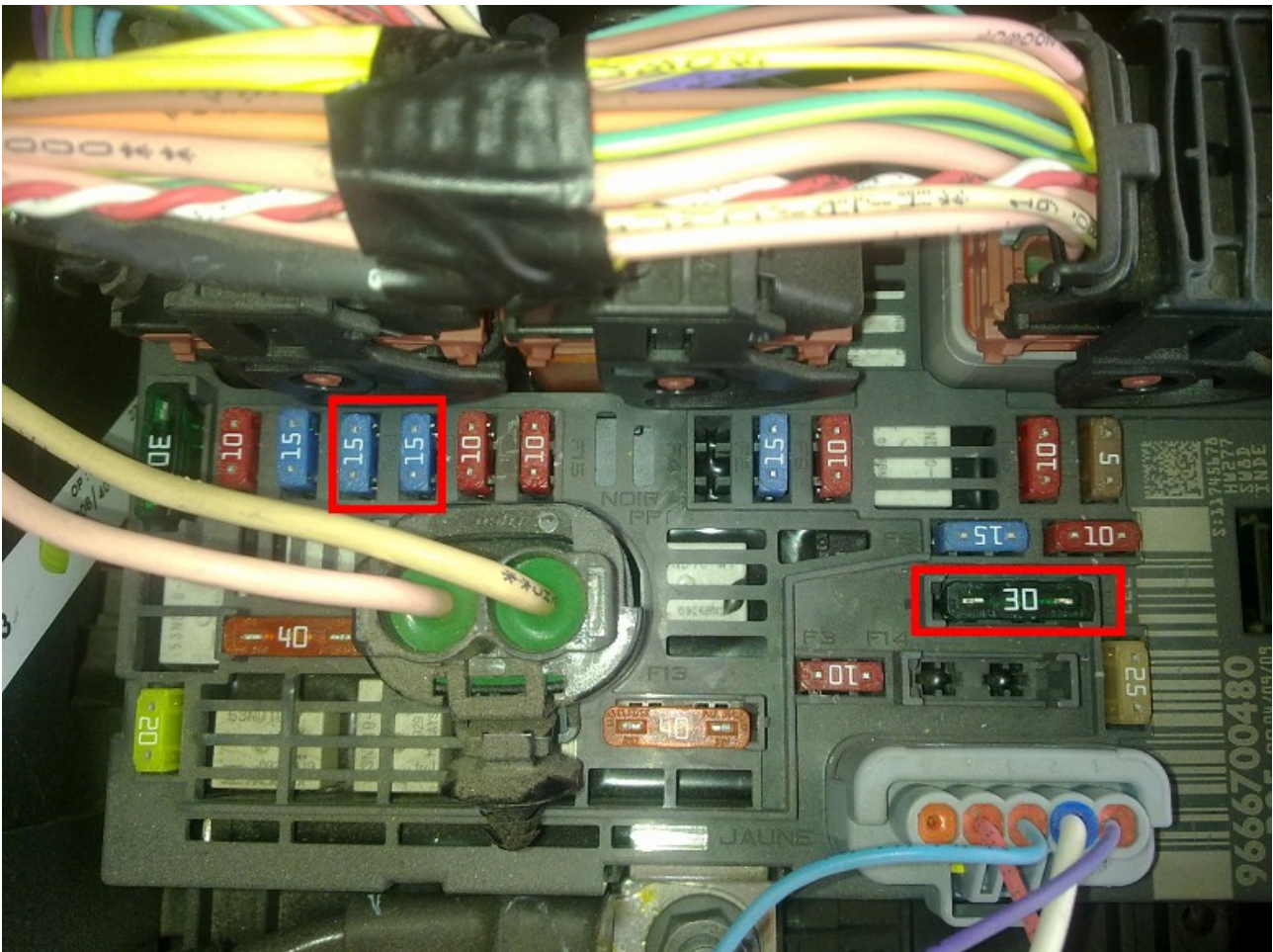
It's possible to have an error message that the PIN code can't be retrieved or the current BSI is not supported. In such a case please contact abritus72 via mail support@abritus72.com.

If the procedure has been interrupted for example by:

- OBD cable disconnection
- Low vehicle battery
- Low computer battery
- PC/Windows hang or/and restart
- Program crash
- e.t.c

The car may be left in not operational state. In this case please restart the procedure – when it finish successfully the vehicle will get into operational state. If the vehicle gets into operational state but procedure finish with an error you can try repeating the procedure – in this case it's mostly possible that the procedure will finish correctly.

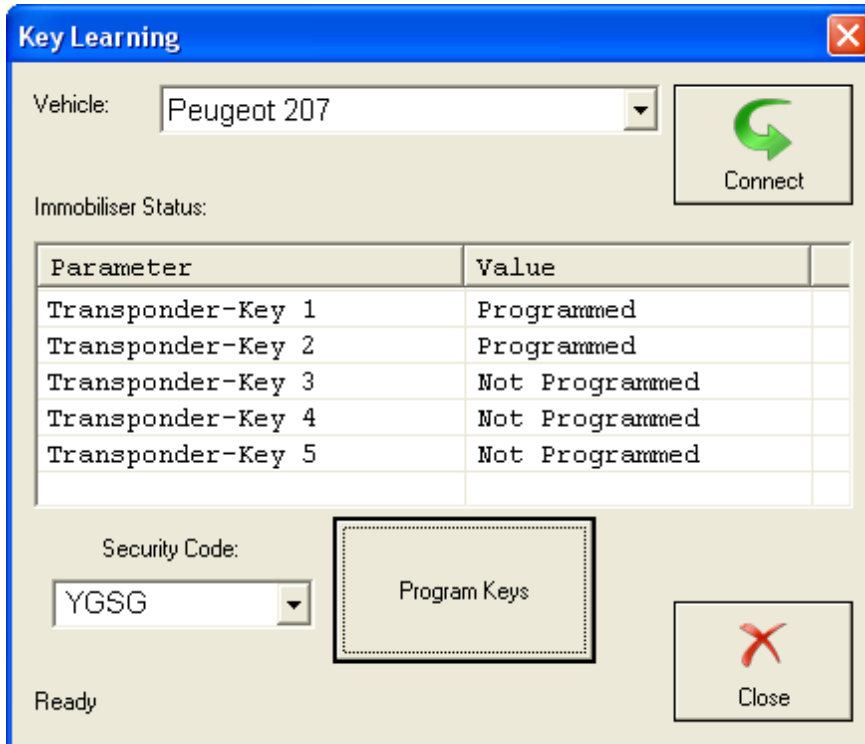
During PIN code retrieving the vehicle gets into service mode in which the front wipers and low beams are turned on. This can drawn the vehicle battery faster, that's why it recommended to remove the front wipers fuse and the fuse for the front beams before starting the procedure. These fuses are located in the front fuse compartment and are probably different for each model. Here is an example of Peugeot 308 fusebox:



- Front left/right low beams – two 15A fuses
- Front wiper – 30A fuse

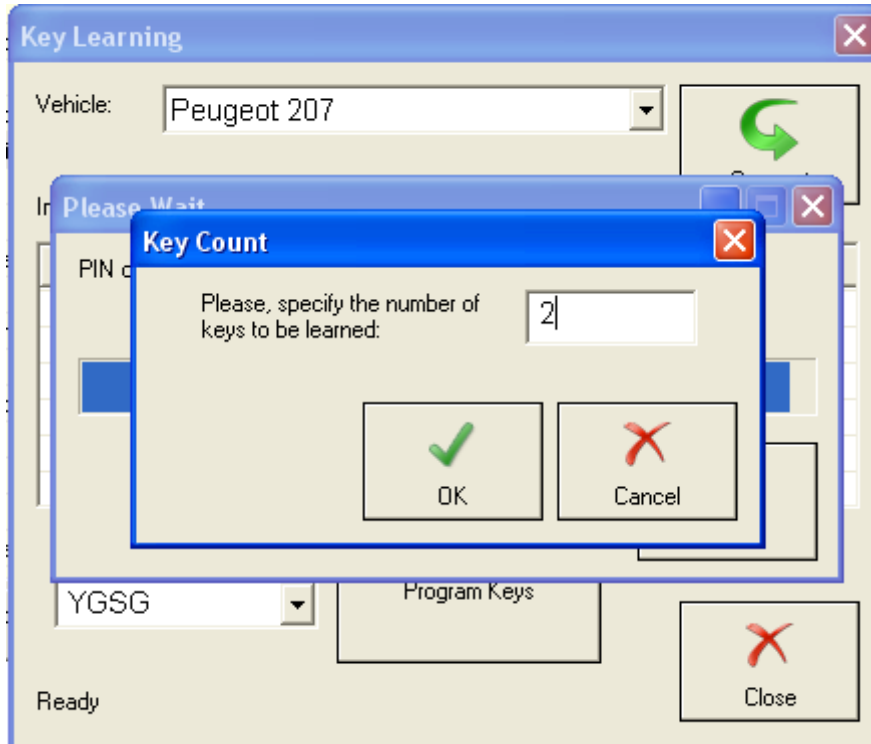
2.2.2. Key Learning

Key learning function can be used only if PIN code is already known. If ReadSecurityCode operation has previously completed correctly, KeyLearning procedure can take the already retrieved PIN code, otherwise you have to enter the PIN code manually. If you retrieved PIN code for more than one vehicle the correct PIN code will be recognized and selected.

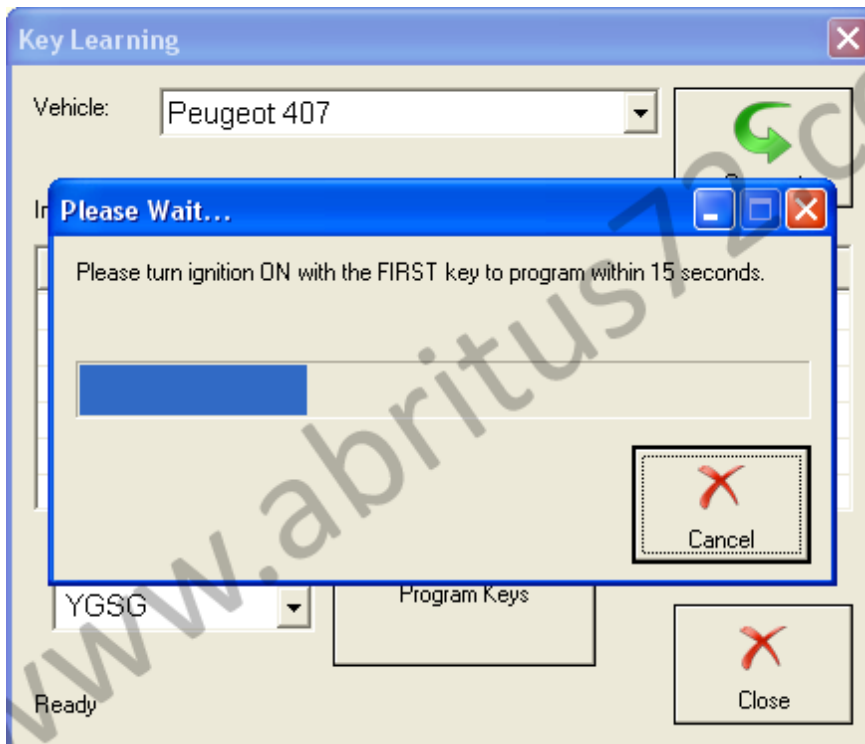


Start the procedure and follow the on-screen instructions. Please prepare all the keys to be learned before the procedure! Generally key learning is based on setting ignition ON with ALL keys that have to be learned.

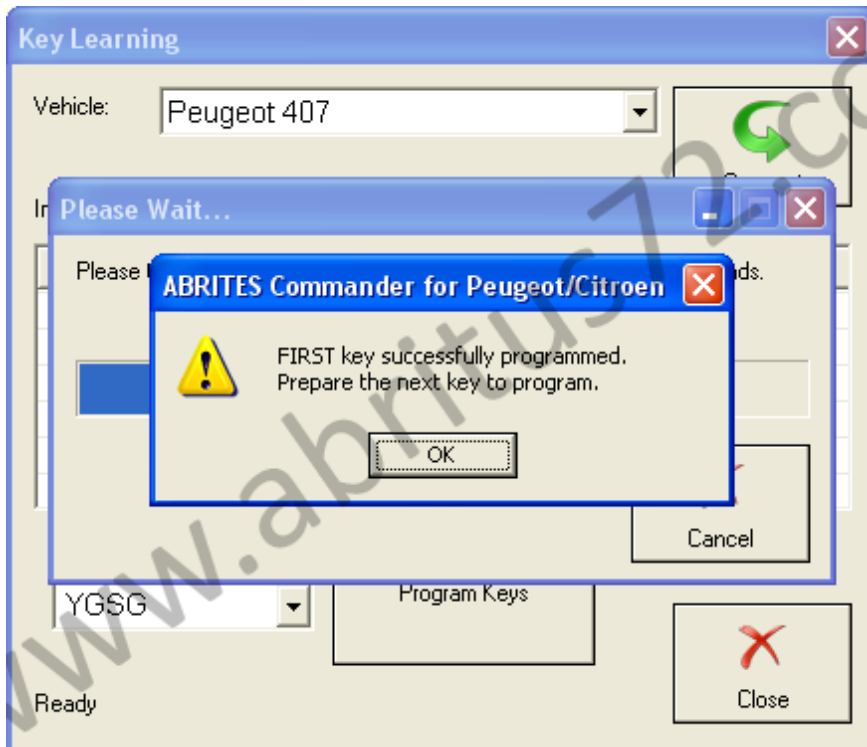
By clicking the button “Program Keys”, the key learning procedure is started and a dialog for key numbers is shown – please enter the number of the keys that have to be learned.



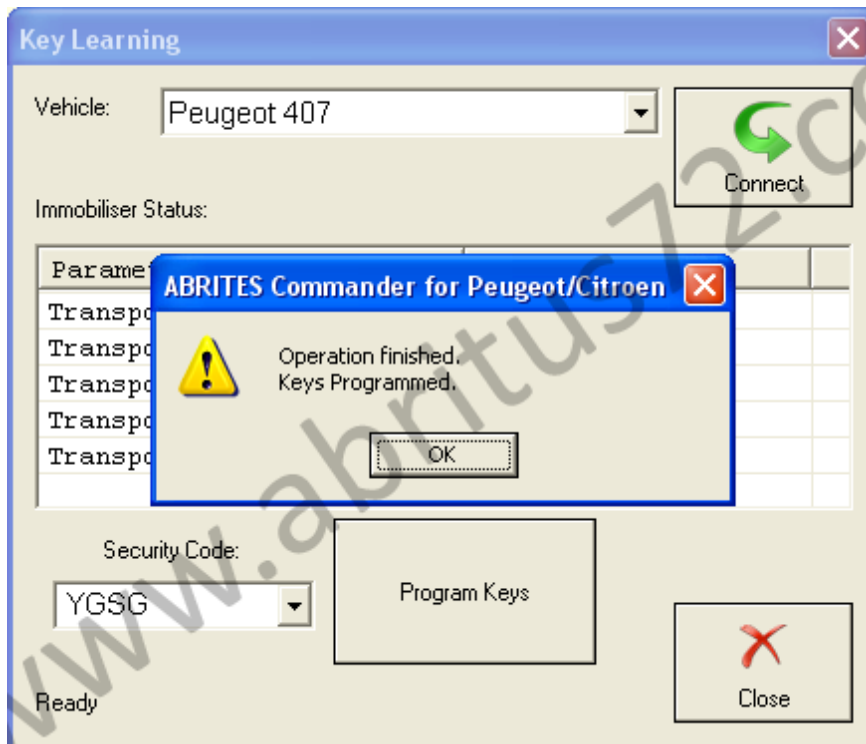
After entering the number of keys to program and click OK you have to insert the first key and switch ON the ignition. This have to be done within 15 seconds. If it's not done within 15 seconds a message will appear and you will have an opportunity to do that again.



Completing the procedure for the first key finish with the following message:



Click OK to continue with the next keys to program. After programming of all entered keys complete, the following message appears:

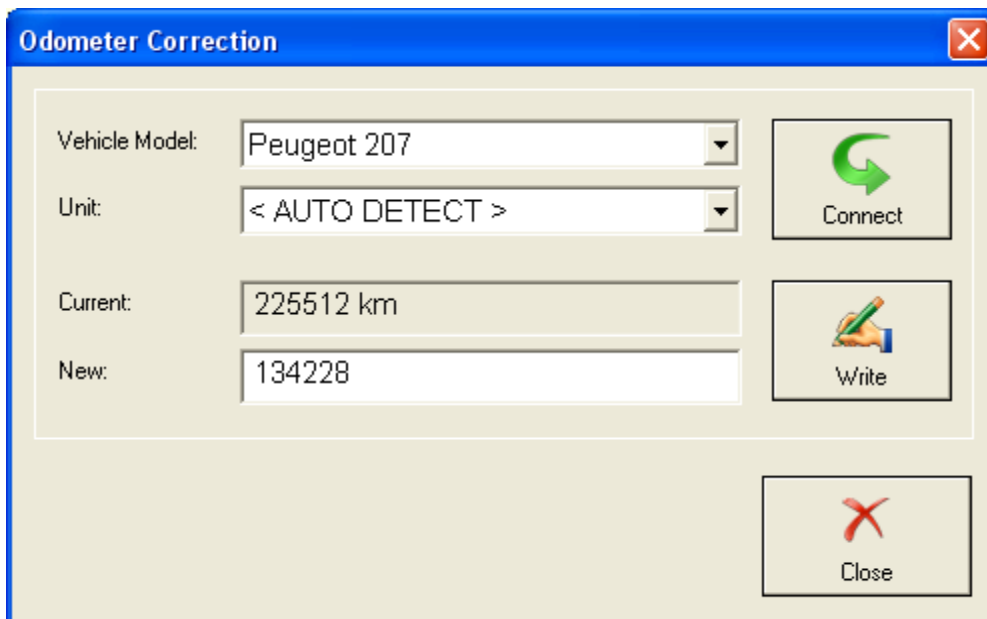


Now you can try if all the keys will start the engine.

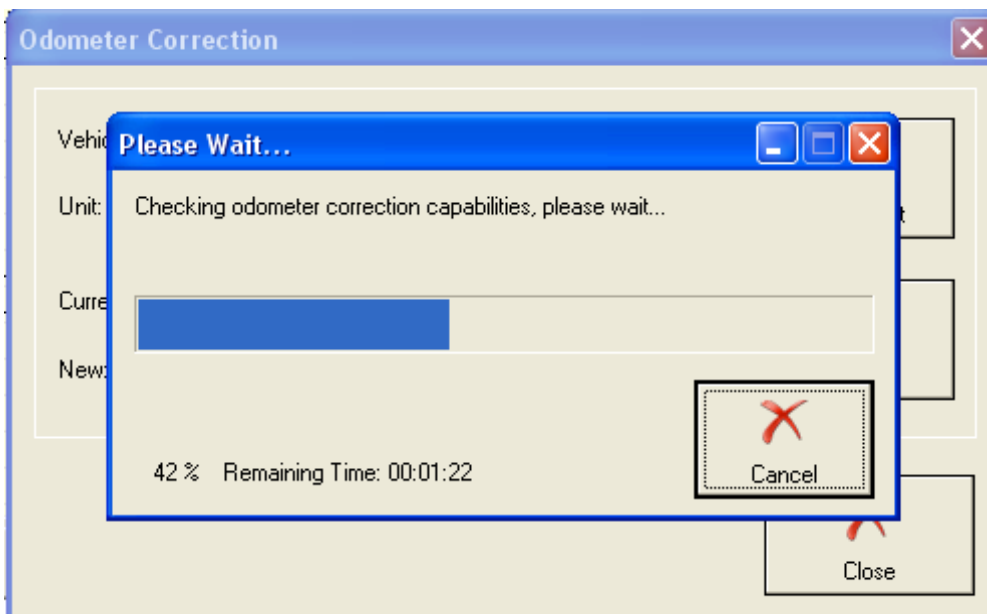
2.2.3. Odometer Correction

This special function allows adjusting of the odometer stored in the BSI device. Since the BSI is synchronized with the vehicle dashboard, odometer can't be corrected backwards, but only forward. If you want to rewind the odometer, you have to disconnect the dashboard during the odometer correction procedure. Keep in mind that after reconnecting the dashboard the total odometer will become equal to the higher odometer value stored on BSI or dashboard, that's why dashboard odometer have to be corrected separately. It's recommended to set dashboard mileage to 0 km, after connecting it to the car it will accept the mileage stored in the BSI automatically.

After OdometerCorrection is opened, select the vehicle and the unit. If you're not sure which is the car model or unit, you can leave it to "Peugeot 207" and "< AUTO DETECT >". Keep in mind that Auto detection additionally increase the operation duration. Click "Connect" to get odometer:



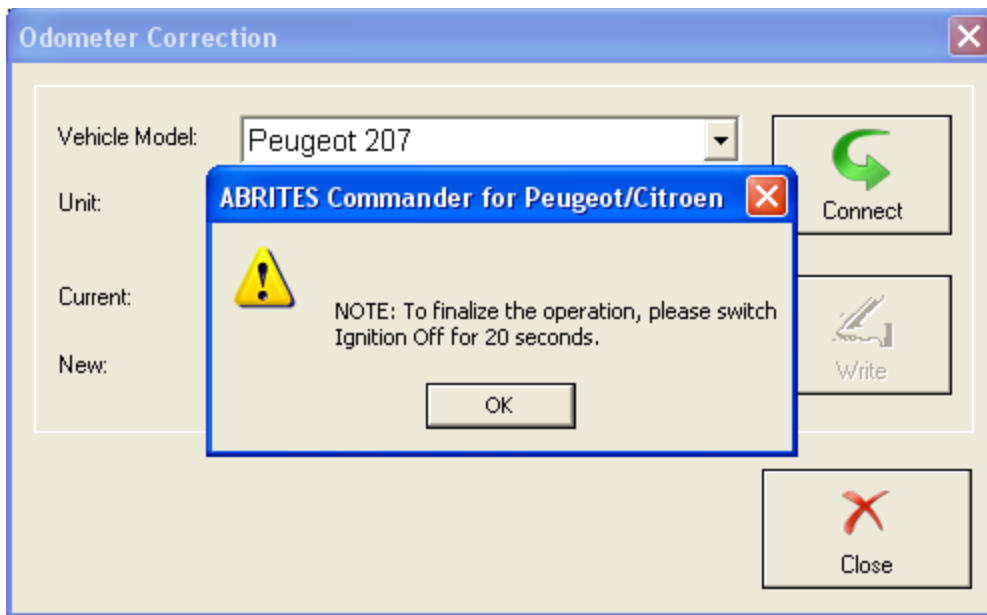
Enter the new odometer value and click "Write" button to start the procedure:



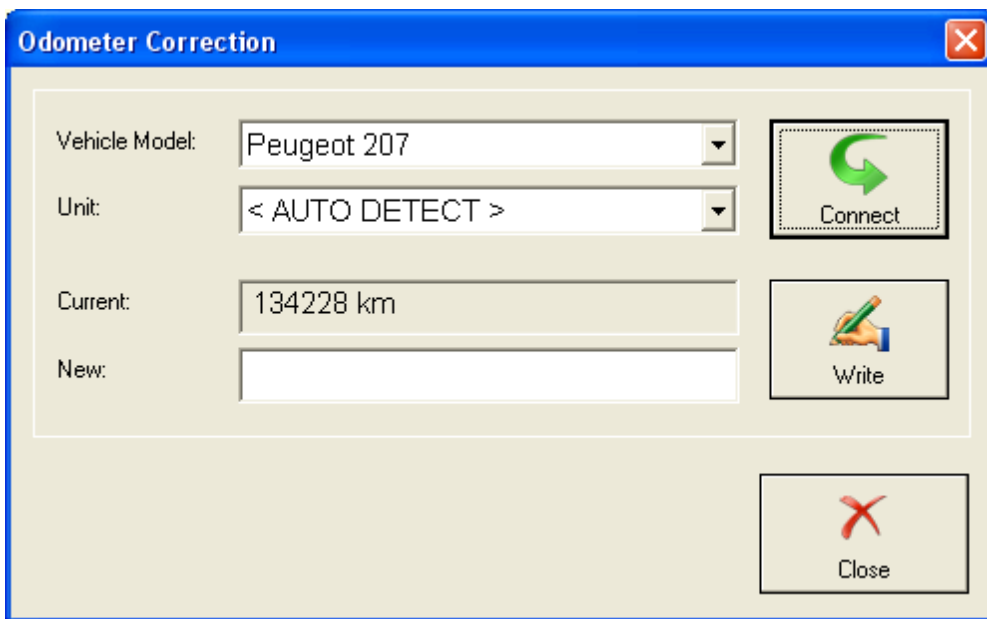
This procedure like ReadSecurityCode procedure can take up to 40 minutes, and in case of any interruption it can leave the car into service mode. That's why it has to be resumed as soon as possible to get the car into operational state.

You can protect vehicle battery by removing the wipers and low beam fuse as described in ReadSecurityCode procedure.

At the end of the procedure the following message appears. Note that it really important to switch OFF ignition for the new odometer to be really accepted by the car.

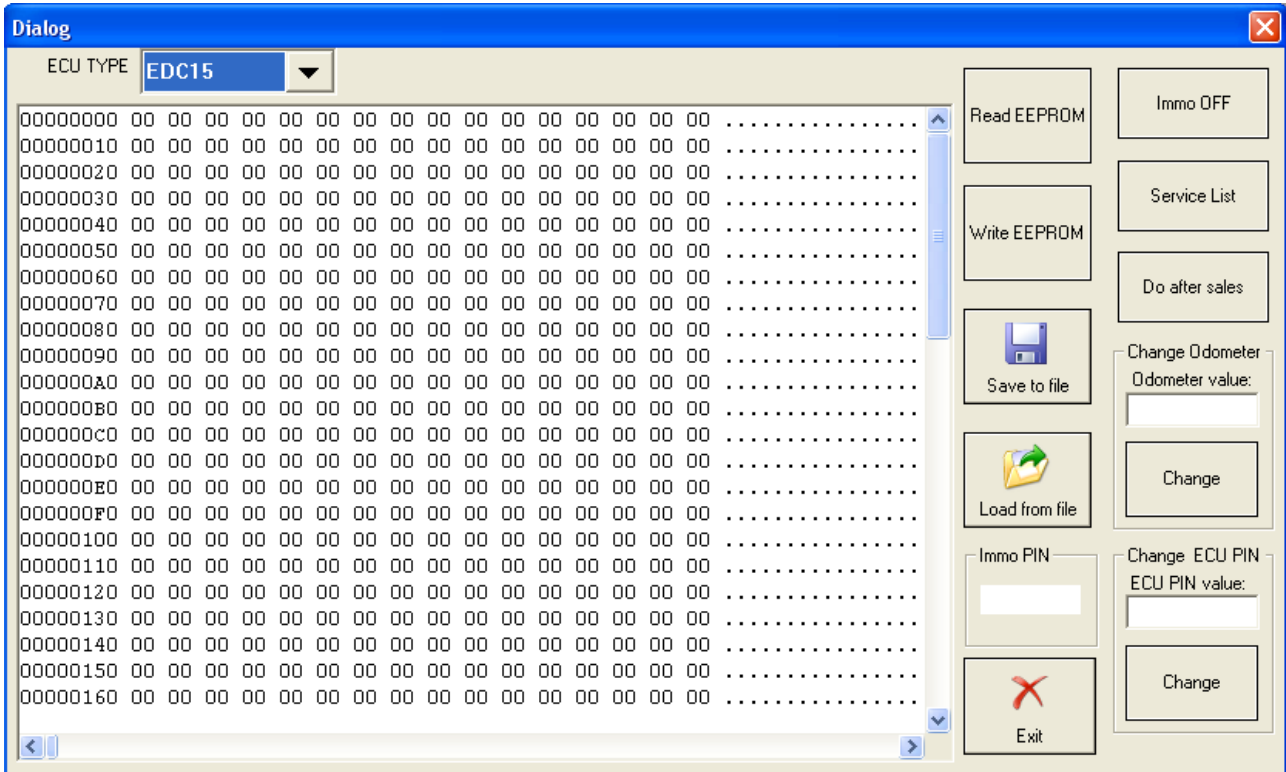


After operation completed successfully you can click "Connect" button again to verify that the odometer is modified correctly.



2.2.4. Engine Control Unit

This dialog is the same as in PSA Commander 2.0 and give you the opportunity to read write EEPROM of EDC15 Engine ECU.



- Read button reads the EEPROM
- Write button writes it back to the ECU
- Immo Off – disable immobilizer
- Do after sales – returns ECU to the after production state
- Service List – opens a dialog with the last 5 service entries that you can edit
- Odometer section – displays current odometer and change it by clicking “Change” button
- Pin section – displays current PIN and change it by clicking “Change” button

3 SUPPORT

For support, please write an email with a detailed explanation to support@abritus72.com .

Be sure to check the News Section at our website frequently to be informed about all the latest updates: www.abritus72.com .