



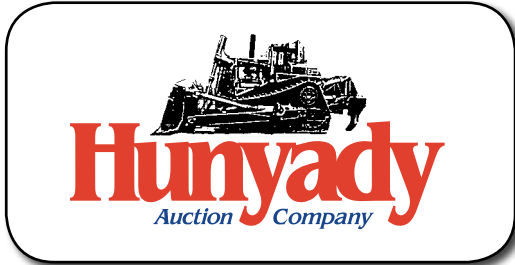
MINI EXCAVATOR AND SKID STEERS



'07 INT'L 9400i AND ROGERS 50 TON



'14 AND '11 GMC ACADIA AWD



1440 COWPATH RD. • HATFIELD, PA 19440
215/361-9099 • Fax: 215/361-9212
www.hunyady.com

PRE-SORTED
FIRST CLASS MAIL
US POSTAGE
PAID
HAVERTOWN, PA
PERMIT #45



ABSOLUTE AUCTION COMPLETE LIQUIDATION

**Souderton, Pennsylvania
(Philadelphia/Allentown Area)**



C&T Associates, Inc.

WEDNESDAY, MAY 25, 2016 - 9:00AM



C&T Associates, Inc.

Bid Live Online proxibid
www.proxibid.com/hunyady



Notice: C&T Associates, Inc. is a third generation sewer and water utility contractor whose primary focus of recent years has been the construction and maintenance of water & wastewater treatment plants throughout Pennsylvania, New Jersey, and Delaware. Following 75 successful years in the industry, the owners have decided to liquidate all assets in order to pursue other personal interests. All equipment is owned by C&T and will sell to the highest bidder without minimums, reserves or buyers premiums.

Location: The auction will be held at the C&T facility, 1000 Hagey Road, Souderton, Pennsylvania 18964

Sale Site Directions: From PA Turnpike Northeast Extension (I-476): Exit at #31 Lansdale. After toll booth turn RIGHT onto Sumneytown Pike (Route 63). Follow (0.9) miles and turn RIGHT onto Wambold Road. Continue (1.4) miles and turn LEFT onto Schoolhouse Road. Follow (0.8) miles and turn RIGHT onto Forman Road. Continue (0.8) miles and turn RIGHT onto Hagey Road. Follow to sale site on right.

From Route 309: Exit at Route 113 – Souderton. Follow Route 113 South (E. Broad Street) into town of Souderton. Continue STRAIGHT onto W. Broad Street, where Rt. 113 turns Right onto Main Street (do not follow Route 113) Follow W. Broad St (1.0) mile to end and turn RIGHT onto Godshall Road. Follow to 1st LEFT onto Lower Road. Continue STRAIGHT onto Forman Road (where Lower Rd turns Right) and follow to 1st LEFT onto Hagey Road. Continue to sale site on Right.

Online Bidding: Live internet bidding will be provided by Proxibid. Proxibid will require a 2.5% internet provider service fee (capped at \$750) that will be charged for each item purchased online. All interested internet bidders are required to register w/Proxibid 24 hours prior to the auction at www.proxibid.com/hunyady or call 877-505-7770

Terms: Payment in full is required on sale day by cash, certified funds, or check with a bank letter of guarantee. Sample letter of guarantee: "We hereby guarantee the payment of our customer _____ written on his account up to _____ dollars for purchases at your auction sale on May 25, 2016" All guaranteed checks should be made payable to Hunyady Auction Co.

Sales Tax: All assets operated by C&T Associates, Inc. have been purchased through their internal leasing arm, C&T Affiliates, Inc. Therefore, the auctioneer is required to collect sales tax at the rate of 6%, unless the purchaser can provide their valid PA sales tax exemption certificate at time of settlement.

Financing: Financing is available, please contact Susan (215) 361-9099 at the auction company for details.

Inspection: Items will be available for inspection beginning one week prior to the auction from 8:00AM to 4:00PM, or sale day morning beginning at 7:00AM. The site will be closed Saturday and Sunday, May 21st and 22nd

Removal: After complete payment, all sale items may be removed on sale day as long as the removal activity is not disruptive to the sale and only until 5:00PM. Items may also be removed Thursday and Friday, May 27th and 28th and Tuesday thru Thursday, May 31st thru June 2nd. All items must be removed no later than Thursday, June 2, 2016 at 4:00PM ** PLEASE NOTE-The site will be closed Monday, May 30th in observance of Memorial Day

Airport Information: The area is serviced commercially and privately through the Lehigh Valley International Airport as well as Philadelphia International Airport.

Motel Information: Holiday Inn Lansdale, 1750 Sumneytown Pike, Kulpville, PA 19443 (215) 368-3800 • Courtyard Philadelphia Lansdale, 1737 Sumneytown Pike, Lansdale, PA 19446 (215) 412-8686

Sale Site Phone: (267) 446-3808 (Beginning May 16, 2016) • Sale Site Fax: (888) 859-8958

CONTRACTORS TOOLS

HOBART Skid Mounted Gas Powered 250 Amp/8500 Watt Welder/Generator, Onan 18HP, with wire feeder • **MUELLER** B100 Pipe Tap • Hydrostatic Pump • **WACKER** BS60-2i Foot Compactor • **(2) HILTI** DD-EC-1 Core Drills • **(3) MILWAUKEE** Core Drills • Core Bits: 14"; (3) 12"; (2) 10"; (2) 8"; (2) 6"; (1) 5"; (5) 3-1/2" to 2" • **DE-WALT** 3400 PSI Cold Pressure Washer • **(2) STIHL** TS400 Gas Powered Demo Saws • **(2) STIHL** T420 Gas Powered Demo Saws • **STIHL** MS271, 18" Chain Saw • **(3) STIHL** MSE 24" Electric Chain Saws • **(2) ECHO** Weed Trimmers • Gas Powered Air Compressor, wheelbarrow type • **TSURUMI** LB800, 2" Submersible Pump • **WACKER** Concrete Vibrator • **(2) FORNEY** Air Meters • Rebar Gun • **UNITEC** Pneumatic Hack Saw • Magnetic Drill • **HILTI** T876P-ATC Hammer Drill • **HILTI** T830 Rotary Hammer • **(2) HILTI** TE-30-C-AVR Hammer Drills • **HILTI** TE35 Hammer Drill • **HILTI** TE-50 Hammer Drill • **(3) HILTI** Powder Fasteners • **PORTA CABLE** 423MAG Circular Saw • Circular Saw • Fiberglass Extension and Step Ladders

SURVEY INSTRUMENTS

CLS Accu Beam 6 Pipe Laser • **(2) TOPCON** RL-H3C Rotating Lasers • **TOPCON** RL-60B Rotating Laser • **PENTAX** PTS-II 05 Total Station • **TOPCON** Transit • **SOK-KISHA** Transit • **LIETZ** 301 Transit • **TOP CON** AT-G7N Auto Level • **TOPCON** AT-F4 Auto Level • **NORTHWEST** NAL-26 Auto Level • Site Level

SHOP TOOLS AND EQUIPMENT

KENNEDY Tool Chest and Top Box with contents • **MILLER** Spectrum 375 Plasma Cutter, 115 or 240 volt • (4) Oxygen Acetylene Torch Sets • (2) Oxygen Acetylene Pipe Cutting Track Torches • Torque Wrenches (3/4"; 1/2"; (2) 3/8") • (2) 1" Impact Wrenches and CP 3/4" Impact Wrench • **LARGO** Electric Hot Pressure Washer • **DAYTON** 1 Ton Electric Chain Hoist, 110 volt and (10) Chain Falls • **GRAY** Pneumatic Bumper Jack • **BLACK HAWK** Porta Power, with accessories • **BIG RED** 22 Ton Pneumatic Portable Bottle Jack • **NAPA** 3.5 Ton Floor Jack • Bearing Splitters and Pullers • **ZEP** Parts Washer • (2) Pneumatic Lubers • **NAPA** 6/12/24 Volt Battery Charger • (4) Jack Stands (large) • (4) Jack Stands (small) • (2) Banding Carts



1000 Hagey Road, Souderton, Pennsylvania 18964

HYDRAULIC EXCAVATORS AND ATTACHMENTS

1997 KOMATSU Model PC300LC-6LC Hydraulic Excavator, s/n A80608, powered by Komatsu diesel engine and hydraulic drive, equipped with 10'6" dipper stick, Esco 48" digging bucket, and 34" TBG pads. In good condition with fair undercarriage.



'97 KOMATSU PC300LC-6LC

1993 KOMATSU Model PC90-1 Hydraulic Excavator, s/n 1736, powered by Komatsu diesel engine and hydraulic drive, equipped with 8'2" dipper stick with hydraulic beyond, 24" digging bucket, JRB hydraulic coupler, and 24" TBG pads. In good condition with fair to good undercarriage.



KOMATSU PC90-1



'98 CAT 325BL

1998 CATERPILLAR Model 325BL Hydraulic Excavator, s/n 6DN00758, powered by Cat 3116DITA diesel engine and hydraulic drive, equipped with 10'6" dipper stick, 30" digging bucket, enclosed ROPS cab, and 32" TBG pads. In good condition with good undercarriage.



'02 CAT 302.5

2002 CATERPILLAR Model 302.5 Mini Hydraulic Excavator, s/n 4AZ03973, powered by Cat diesel engine and hydraulic drive, equipped with 47" dipper stick with hydraulic beyond, 24" digging bucket, 57" backfill blade, ROPS canopy, and 12" rubber tracks. In good condition with fair tracks.

1996 CATERPILLAR Model 320BL Hydraulic Excavator, s/n 6CR00192, powered by Cat 3066 diesel engine and hydraulic drive, equipped with 9'6" dipper stick, Geith 48" digging bucket, and 32" TBG pads. In good condition with good undercarriage.



'96 CAT 320BL

1998 KOMATSU Model PC27R-8 Mini Excavator, s/n 11519, powered by Komatsu diesel engine and hydraulic drive, equipped with 47" dipper stick with hydraulic beyond, 14" digging bucket, 59" backfill blade, ROPS canopy, and 12" rubber tracks. In fair to good condition with fair tracks.



'98 KOMATSU PC27R-8



'96 CAT 311B

1996 CATERPILLAR Model 311B Hydraulic Excavator, s/n 8HR00171, powered by Cat 3064T diesel engine and hydraulic drive, equipped with 7'4" dipper stick, 28" digging bucket, and 24" TBG pads. In good condition with good undercarriage.

STANLEY MB256 Hydraulic Demolition Hammer, s/n 060112024 (Mini) • Hydraulic Demolition Hammer (Mini) • 24" Hydraulic Plate Compactor (Komatsu PC90)

CAT 48" Digging Bucket (Cat 325) • BALDERSON 46" Digging Bucket (Cat 320) • ESCO 36" Digging Bucket (Cat 320) • GEITH 24" Digging Bucket (Cat 320) • CP 32" Digging Bucket, with tiger teeth (JD) • GEITH 16" Digging Bucket (Komatsu PC90) • 40" Digging Bucket (Cat 311)

CRAWLER TRACTOR AND RUBBER TIRED LOADER



'02 CAT D4GXL

2002 CATERPILLAR Model D4GXL Crawler Tractor, s/n CFN00503, powered by Cat 3026 diesel engine and hydrostatic transmission, equipped with 6-way straight blade, ROPS canopy, and 16" SBG pads. In good condition with fair to good undercarriage.

1992 KOMATSU Model WA180-1 Rubber Tired Loader, s/n A75162, powered by Komatsu diesel engine and shuttle transmission, equipped with JRB hydraulic quick coupler, auxiliary hydraulics, JRB 60" fork attachment, enclosed ROPS cab, and 17.5-25 tires. In good condition with fair to good tires. (Reserved For Use During Loadout Until Thursday, June 2nd at 12:00 Noon)

JRB Hydraulic Side Dump Bucket



'92 KOMATSU WA180-1 (SOLD WITH FORK ATTACHMENT ONLY)

TRACTOR LOADER BACKHOES AND ATTACHMENTS

2001 CASE Model 580 Super M, 4x4 Tractor Loader Extend-A-Hoe, s/n JGG0280452, powered by Case diesel engine and shuttle transmission, equipped with general purpose loader bucket with bolt-on cutting edge, 24" digging bucket, ride control, 4-stick backhoe controls, enclosed ROPS cab with heat and air conditioning, 12-16.5 front and 19.5L-24 rear tires. In good condition with fair tires.



'01 CASE 580SM 4X4 EXTEND-A-HOE



'01 CASE 580SM 4X4

1994 CASE Model 580 Super K Tractor Loader Extend-A-Hoe, s/n JGG0181457, powered by Case diesel engine and shuttle transmission, equipped with general purpose loader bucket with bolt-on cutting edge, 18" digging bucket, 4-stick backhoe controls, enclosed ROPS cab, 11L-16 front and 19.5L-24 rear tires. In fair to good condition with fair tires.



(2) '94 CASE 580 SUPER K

1994 CASE Model 580 Super K Tractor Loader Backhoe, s/n JGG0181868, powered by Case diesel engine and shuttle transmission, equipped with general purpose loader bucket with bolt-on cutting edge, 18" digging bucket, rear auxiliary hydraulics, 3-stick backhoe controls, enclosed ROPS cab, 11-16 front and 19.5-24 rear tires. In fair to good condition with fair to good tires.



'95 CAT 416B 4X4 EXTEND-A-HOE

18" Digging Bucket (Case 580SL) • 12" Digging Bucket (Case 580SL) • 12" Digging Bucket (Case 580 Super M) • 24" Digging Bucket (Cat 416B) • 36" Hanging Bucket Forks • (3 Sets) 48" Bolt-On Bucket Forks

1995 CATERPILLAR Model 416B, 4x4 Tractor Loader Extend-A-Hoe, s/n 8ZK06781, powered by Cat 3054DIT diesel engine and shuttle transmission, equipped with 4-in-1 bucket, 18" digging bucket, 4-stick backhoe controls, enclosed ROPS cab with heat and air conditioning, 12.5/80-18 front and 19.5L-24 rear tires. In fair to good condition with fair to good tires.

SKID STEER LOADERS AND ATTACHMENTS



'05 CAT 236B

2005 CATERPILLAR Model 236B Skid Steer Loader, s/n HEN01993, powered by Cat diesel engine and hydrostatic transmission, equipped with 74" general purpose loader bucket, standard auxiliary hydraulics, 8-pin electric, ROPS canopy, joystick controls, and 12-16.5 tires. In good condition with very good tires.



'05 CAT 236B (FORKS SOLD SEPARATELY)



'03 CAT 257

2003 CATERPILLAR Model 257 Crawler Skid Steer Loader, s/n CMM01389, powered by Perkins diesel engine and hydrostatic transmission, equipped with general purpose loader bucket, auxiliary hydraulics, 8-pin electric, joystick controls, enclosed ROPS cab with heat, and 15" rubber tracks. In good condition with good rubber tracks.

48" & 46" Fork Attachments • SWEEPSTER HB60 Hopper Broom

TRUCK TRACTOR AND LOWBOY TRAILER



'07 INT'L 9400i



'86 ROGERS 50 TON

2007 INTERNATIONAL Model 9400i Tri-Axle Truck Tractor, powered by Cat C15, 475HP diesel engine and Eaton Fuller 18 speed transmission, equipped with 46,000# rear axle and 14,000# front axle, double frame, wetline kit, Hendrickson air ride suspension, air slide 5th wheel, Protec aluminum headache rack with work light and caution bar, 3-stage Jake brake, differential lock, power heated mirrors, power windows and locks, cruise control, aluminum wheels, and 11R24.5 tires. In good to very good condition with good tires.

1986 ROGERS Model T3H50DSF22-89-R20, 50 Ton Tri-Axle Lowboy Trailer, VIN# 20323, equipped with ground bearing hydraulic detachable, 21'6" x 96" level deck, 11' deck over wheels, spring/beam suspension, tie downs, outriggers, and 250/70R22.5 tires. In good condition with good tires.

FORKLIFTS, AERIAL LIFT, AND SCISSORS LIFT

2004 CATERPILLAR Model TH360B, 6,000 lb. Telescopic Rough Terrain Forklift, s/n SLE00916, powered by Cat 3054 diesel engine and powershift transmission, equipped with 45' 3-section boom, 60" and 48" forks, hydraulic quick coupler, auxiliary hydraulics, 5-pin electric, enclosed ROPS cab, and 13.00-24TS tires. In good condition with very good tires. (Reserved For Use During Loadout Until Thursday, June 2nd at 12:00 Noon)



'04 CAT TH360B, 6,000#

1998 JCB Model 530, 6,000 lb., 4x4 Telescopic Rough Terrain Forklift, s/n 772204, powered by Perkins diesel engine and shuttle transmission, equipped with 22' 2-section boom, 48" forks, and 15.5-25 tires. In good condition with good tires.



'98 JCB 530, 6,000#

1990 JCB Model 505-22, 5,500 lb., 4x4 Telescopic Rough Terrain Forklift, s/n 563182, powered by Perkins diesel engine and shuttle transmission, equipped with 2-stage telescopic boom, 12' reach, 22' lift height, 56" forks, and 15.5-25 tires. In fair to good condition with fair to good tires.



'90 JCB 505-22, 5,500#

2001 KOMATSU Model FG25T-12, 3,750 lb. Cushion Tired Forklift, s/n 553308A, powered by dual fuel (currently running on gas) and shuttle transmission, equipped with 188" 3-stage mast, 42" forks, FOPS, and side shift. In good condition with good tires.



'01 KOMATSU FG25T-12, 3,750#

Extendable Forklift Boom

1995 GROVE Model AMZ66XT, 4x4 Aerial Lift, s/n 31970, powered by Deutz diesel engine and hydrostatic transmission, equipped with 60' platform height, 600 lb. man basket with rotate and level, electric outlet, articulated boom, 2-stage telescopic, and 15-19.5 tires. In fair to good condition with fair to good tires.



'95 GROVE AMZ66XT

2001 HAULOTTE Model Compact 2032E DC Electric Scissors Lift, s/n GE103552, powered by electric motor and hydrostatic transmission, equipped with 20' max platform height, 32" width, 60" platform extension, 770 lb. capacity, electric outlet, and non marking solid rubber tires. In fair to good condition with fair to good tires.

DUMP AND ROLL-BACK TRUCKS



'98 CHEVY C7500

2000 FREIGHTLINER Model FL-60 Single Axle Roll-Back Truck, powered by Cummins ISB225, 5.9L, 225HP diesel engine and 6 speed transmission, equipped with Vulcan 19'x96" steel roll-back body with wheel lift hoist, Ramsey winch, 17,000# rear and 8,000# front axle, 25,000# GVWR, headache rack with light bar, hydraulic brakes, power windows, cruise control, air conditioning, and 245/70R19.5 tires. In good condition with good tires.



'00 FREIGHTLINER FL-60

TRENCH COMPACTOR AND AIR COMPRESSORS

2000 RAMMAX Model RW1404 Trench Compactor, s/n 328662, powered by Hatz diesel engine and hydrostatic transmission, equipped with (2) 33" split padfoot drums and drum cleaners. In fair to good condition.



'04 IR 185CFM

1990 INGERSOLL-RAND 185CFM Portable Air Compressor, s/n 181580U90329, powered by JD diesel engine. In fair to good condition.

2004 INGERSOLL-RAND Model P185WIR, 185CFM Portable Air Compressor, s/n 345287UD0820, powered by JD diesel engine, equipped with ST205/75D15 tires. In good condition.



'90 IR 185CFM

OFFICE TRAILERS, STORAGE TRAILERS, AND CONTAINERS



(2) 8'x28' Single Axle Office Trailers, through wall air conditioning, baseboard heat, fluorescent lights • (2) 8'x28' Single Axle Office/Storage Trailers, through wall air conditioning, baseboard heat, lights • 8'x20' Single Axle Office Trailer, through wall air conditioning, baseboard heat, lights • (3) **MONON** 8'x28' Single Axle Storage Trailers • (3) 40' Tandem Axle Storage Trailers • **FRUEHAUF** Storage Trailer • (5) 8'x20' Overseas Containers

PICKUP TRUCKS, SUVs, AND UTILITY TRAILER

2007 GMC Model 2500HD Sierra SLE 4x4 Extended Cab Pickup Truck, powered by 6.0L, V-8 gas engine and automatic transmission, equipped with 6'6" bed, side boxes and material rack, Boss 8'2" power-V plow with Smart Hitch 2, power windows and locks, cruise control, air conditioning, alloy wheels, and LT245/75R16 tires. In good condition with good tires.



'07 GMC 2500HD SIERRA SLE 4X4



'10 GMC 1500 SIERRA SLE 4X4

2009 GMC Model 1500 Sierra SLE 4x4 Extended Cab Pickup Truck, powered by Vortec 5.3L, V-8 gas engine and automatic transmission, equipped with 6.5' bed with cap and side boxes, alloy wheels, air conditioning, power windows and locks, cruise control, and alloy wheels. In good condition with good tires.



'09 GMC 1500 SIERRA SLE 4X4

2006 CHEVROLET Model 1500 Silverado Z71, 4x4 Extended Cab Pickup Truck, powered by Vortec 5.3L, V-8 gas engine and automatic transmission, equipped with 6'5" bed, cross tool box and material rack, power windows and locks, cruise control, air conditioning, alloy wheels, and P265/70R17 tires. In good condition with good to very good tires.



'03 CHEVY 2500 SILVERADO LS 4X4

2003 CHEVROLET Model 2500 Silverado LS 4x4 Extended Cab Pickup Truck, powered by 6.0L, V-8 gas engine and automatic transmission, equipped with 6.5' bed with material rack, air conditioning, power windows and locks, cruise control, alloy wheels, and 245/75R16 tires. In fair to good condition with very good tires.

2014 GMC Model Acadia AWD 4-Door SUV, powered by 3.6L, V-6 gas engine and automatic transmission, equipped with full power package, cloth interior, air conditioning, alloy wheels, and P255/65R18 tires. In good to very good condition with good tires.



'14 GMC ACADIA AWD



'11 GMC ACADIA AWD

2011 GMC Model Acadia AWD 4-Door SUV, powered by 3.6L, V-6 gas engine and automatic transmission, equipped with full power package, cloth interior, air conditioning, and alloy wheels. In good condition with good tires.

2013 FORD Model Escape SE AWD 4-Door SUV, powered by 1.6L Eco Boost gas engine and automatic transmission, equipped with power windows and locks, cruise control, Microsoft Sync communication system, keyless entry, alloy wheels, and 235/55ZR17 tires. In good condition with good tires.



'13 FORD ESCAPE SE AWD



'05 J&J CARGO EXPRESS SHADOW MASTER

2005 J&J CARGO EXPRESS Shadow Master 22'x7' Tandem Axle Enclosed Utility Trailer, equipped with 77" interior height, 6'x6" drop down door, curbside door, 12V hitch jack, 2-5/16 ball hitch, spring suspension, front adjustable shelving, Unitrac tie downs, interior 12V lighting, 7,000# GVWR, and ST225/75R15 tires. In good condition with good tires.

TRENCH BOXES AND ROAD PLATE

8'x26'x9" Single Wall Trench Box • **GME** 8'x24'x8" Double Wall Trench Box • **GME** 8'x24'x8" Double Wall Trench Box • 8'x20'x8" Double Wall Trench Box • **GME** 6'x20'x8" Double Wall Trench Box • **GME** 8'x16'x4" Double Wall Trench Box • 8'x10'x8" Single Wall Trench Box • **GME** 8'x8" Aluminum Trench Shield, with 44" spreaders • (1 Set) 16' Spreaders • (1 Set) 15' Spreaders • (1 Set) 12' Spreaders • (1 Set) 10' Spreaders • (2 Sets) 9' Spreaders • (1 Set) 8' Spreaders • (1 Set) 6' Spreaders • (1 Set) 5' Spreaders • (1 Set) 5' Spreaders • (2 Sets) 4' Spreaders • (2 Sets) 42" Spreaders • (2) 8'x15'x1-1/4" Road Plate • 8'x15'x1-1/4" Road Plate • 8'x15'x1-1/4" Road Plate • 8'x15'x1-3/8" Road Plate • 8'x15'x1-3/8" Road Plate • 8'x15'x3/4" Road Plate • (2) 8'x12'x3/4" Road Plate • (2) 8'x15'x7/8" Road Plate

FUEL STORAGE, CONCRETE BUCKETS, AND PIPE



FUEL STORAGE

(8) Concrete Buckets 1.0 to 0.5 Cubic Yard • (2) 500 Gallon Skid Mounted Tanks, with pumps • 500 Gallon Concrete Cased Fuel Tank • **OWEN** Cable Operated Clam Bucket • (15) 48"x20' Corrugate Metal Pipe • Ductile Iron Pipe, Valves, and Fittings

MOWER AND 3-POINT HITCH ATTACHMENTS



GRAVELLY Promaster PM260Z Zero Turn Mower, Kohler Commander 25HP, belt drive, 60" mower deck with hydraulic lift, dual fuel tanks (126 Hours) (All Belts Replaced; Zero Hours) • 60" Brush Hog • (2) 2-Bottom Plows • Disc Harrow • Spring Tooth Harrow • Corn Planter

GRAVELLY PROMASTER ZERO TURN