




Number	Image	Description Title	Acc. Number
5		Elizabethan era Galleon <i>Wasa</i> - Kit model	1991.286.2
6		Thames Barge 'Will Everard' - Scratch built	1991.324
8		Clipper ship 'Alma' - Scratch built waterline model	M973.50.1

9



Grand Banks
Schooner - Scratch built 1974.38.1

12



Chinese Junk -
Scratch built 1991.429

14



Outrigger canoe -
Scratch built 1991.501.3

20



Auxiliary Sailing Ship
'Elizabeth' - Scratch M972.85.1
built

28



2 mast Brigantine No Accession
'News Boy', sails up - or Catalogue
Scratch Built #

31



Aux Motor
Schooner 'Lilla Dan' M972.92.3
- Kit model

32



Four Masted
Barque E Leclerc - 1991.323
Scratch built

35



English Galleon - M972.86.1
Scratch built

36



Haida Maid - Cabin No Accession
Cruiser (motor or Catalogue
boat) - Scratch built #

38



Motor schooner
'Lilla Dan' - Kit
model

No Accession
or Catalogue
#

49



Diorama model
Liverpool pilot
schooner
'Perseverance' -
Scratch built

M972.30.4

51



3 mast auxillary
engine sailing ship -
Half hull model

1972.0138.00
3

55



Dutch East India
Trading Company
'Norske Loewe' - Kit
model 1991.466

57



British Ship of the
Line 'Sovereign of
the seas' - Kit
model M972.69.1

59



Barque 'Laurel
Bank' - Scratch built
No Accession
or Catalogue
#

62



Sailing cutter
'Favourite'; F69
sailboat - Scratch
built

2003.1000.87

63



2 mast galleon -
Scratch built

M976.4.3

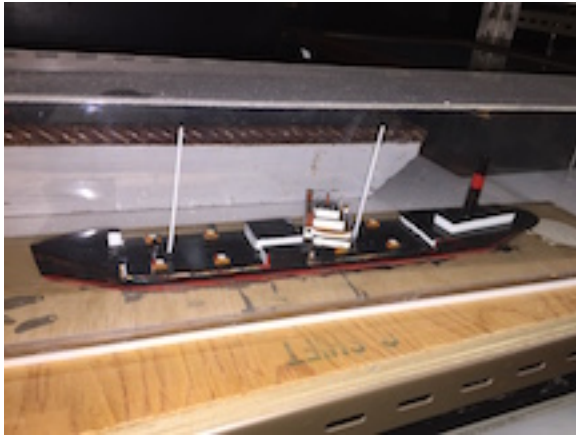
64



Wood Barque
Hinged Masts,
minature - Scratch
built

1991.487

68



Minature model,
steam cargo ship
(Unfinished) -
Scratch built

1984.94.9

71



Passenger liner 'SS
France' - Plastic
souvenir

M973.373.4

74



Two funnel steamer/
Unidentified
Diorama of a
passenger
steamship 2 stack,
folk art style -
Scratch built

2003.1000.08
3

78



Barque, 3 masted
model in waterline
shadowbox "Dart
Pt." 19th c diorama -
Scratch built

2003.1000.08

6

79



Simon Fraser Steam
Boat

2010.0010.00

1

85



Model of a Fijian
outrigger canoe.
Main hull is
extensively carved
along sides and top;
the prow is carved
in the shape of a
large bird - Scratch
built

M972.333.1

88



Bressay Lass, sail
pond yacht -
Scratch built

M972.177.1

89



Sail Pond Yacht -
Scratch built

1991.352??

90



Gertie', sailing
pond yacht -
Scratch built

1972.0177.00
02.001-002M

92



Racing Sail Pond
Yacht (photo is a
yellow strip with
dark blue hull) -
Scratch built

No Accession
or Catalogue
#

93



V.M Blew Bottle or
Bottull Y.C - Scratch 1991.303
built

1991.303

94



Sail Pond Yacht -
Scratch built

No Accession
or Catalogue
#

96



Passenger liner
'Normandie' -
Scratch built

No accession
or catalogue
number

97



sail Pond Yacht -
Scratch built

No Accession
or Catalogue
#

98



Smit rotterdam' sea No accession
tug - Kit model with or catalogue
booklet instructions number

104



sailing & rowing
ship - Scratch built

No Accession
or Catalogue
#

105



sailing pond yacht -
Scratch built

No Accession
or Catalogue
#

106



Kisutch' sail yacht
racer - Scratch built

No Accession
or Catalogue
#

107



Storm Cloud' Sailing
Ship - Scratch built M972.87.2
waterline

108



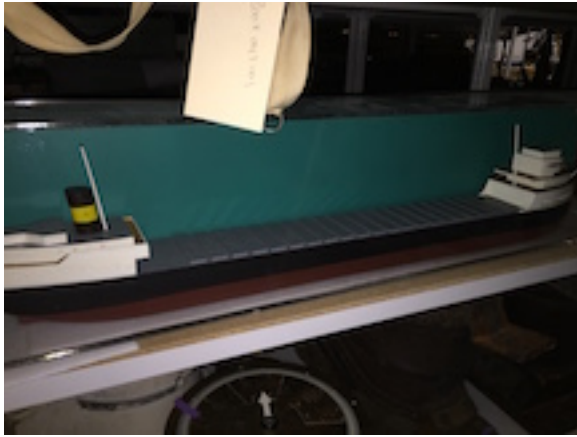
Sailing ship
'Danmark' - Kit 1991.313
model

117



Schooner 'Bluenose
II' - Scratch built 1991.355.1
wood

126



Great Lakes
Steamer 'Edmund
Fitzgerald' - Scratch
built

No Accession
or Catalogue
#

138



Torpedo boat,
german (built at
POW camp in
Letheridge 1943) -
Scratch built

1991.459.1

144



3 mast steam ship -
Scratch built

No Accession
or Catalogue
#

145



City Of Carlisle'
diorama model. A 3
mast sailing ship
under sail - Scratch
built

No accession
or catalogue
number

147



Man of War 'HMS
Prince' - Kit model

No Accession
or Catalogue
#

148



Unnamed fishing
packer - Scratch
built

M972.101.1

149



Tug 'Akragas'
(Kathy M) - Scratch
built

1989.0030.10
1

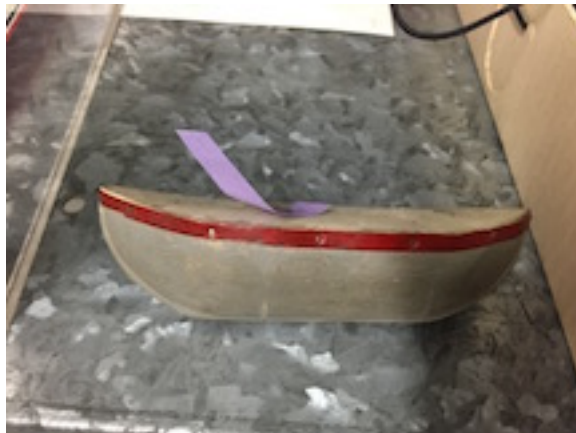
151



Cable Ship 'Lord
Kelvin' - Scratch
built shadow box

M972.94.1

157



Unknown lifeboat -
Scratch built

No Accession
or Catalogue
#

161



Steam trawler
'Atlas' - Scratch
built

1972.83.1

162



German battleship
'KM Graf Spee' -
Scratch built

M972.90.1

164



Sampan' - Scratch
built

M972.331.1

165



CANADIAN CUT-
OUTS paper tug
model pulling paper
log booms. - Kit
model

No accession
or catalogue
number

168



ROYAL PRINCESS
model cruise ship -
Commercial micro
model

1993.13

170



Box with model
parts

No accession
or catalogue
number

175



three mast sailing
ship - artizan

1983.1000.00
1

178



Plastic Destroyer
battle ship -

1991.34

180



Sailing ship 'Spray' -
Scratch built

No accession
or catalogue
number

181



5 mast lumber schooner

No Accession or Catalogue #

182



Schooner
'Bluenose' - Scratch built

No Accession or Catalogue #

185



Life Boat/Piggy Bank -
Commercially made

1992.075

186



Sail Pond Yacht -
Scratch built

No Accession
or Catalogue
#

187



Ark Royal' - Paper
model

No Accession
or Catalogue
#

188



Santa Maria' Paper
model

No accession
or catalogue
number

189



4 masted Barque -
Scratch waterline

M972.73.1

190



Noah's Ark', paper
model

No accession
or catalogue
number

192



Kayak wood -
Carving

M972.92.2a

193



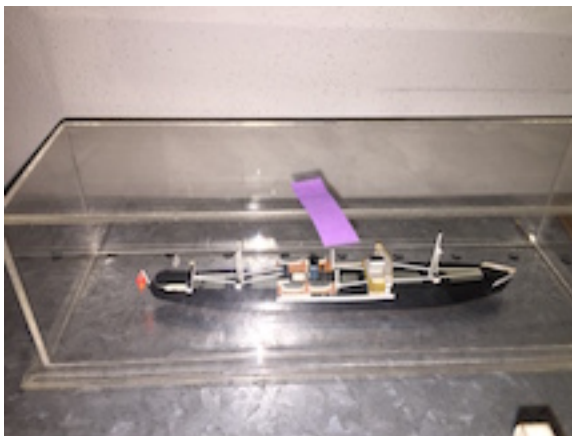
River Mast,
Burmese Rice Boat - M973.64.1
Scratch built

196



Brigantine 'Leon' 1991.286.3

197



Tramp Steamer -
Paper model
No Accession
or Catalogue
#

198



Hansa Cog - scratch
built

No Accession
or Catalogue
#

199



4 masted Barque -
Scratch built

No Accession
or Catalogue
#

200



Cutter, sail - Scratch
built

No Accession
or Catalogue
#

201



Brixton Trawler, a
two-masted
barquentine -
Scratch built

1975.36.2

203



open boat - Scratch
built

No Accession
or Catalogue
#

207



Sail surf board -
Scratch built

1991.486

208



Santa Maria' - Kit
model

1991.338

215



Barquentine 'Prince
of Wales' - Scratch
built

2005.1013.00
01

218



Naval motor cutter -
scratch built

No Accession
or Catalogue
#

223



Elizabethan Galleon
'Le Grande
Mermine' - Kit
model

2007.1034

226



Model of 2 mast
schooner ca. 1900 - M972.178.1
Scratch

227



Hawaiian Outrigger -
Scratch built
No Accession
or Catalogue
#

231



3 masted 'Celtic
Monarch' - Scratch
built

2003.1000.00
09

232



Sail Pond Yacht -
Scratch built

No Accession
or Catalogue
#

233



Open boat/Sails
Primitive Pond
Boat/Model of a
toy sailboat on a
Plexi glass stand -
Scratch built

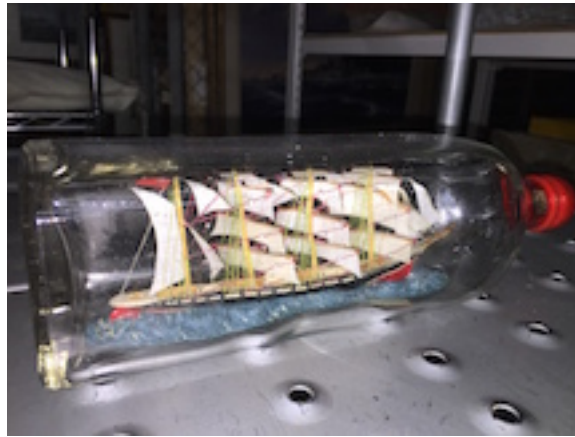
1991.322

241



Sail pond yacht
'Keta' - Scratch built 1991.301

249



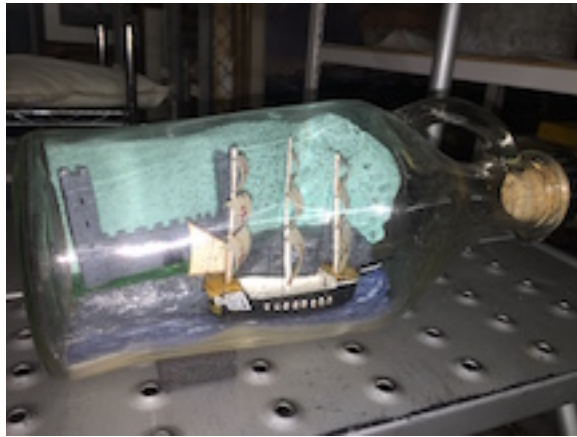
Japanese training
ship 'Nippon Maru' -
scratch built ship in
a bottle 1991.470

247



Ship in a bottle 3
masted schooner
'Ajax' - scratch built
No Accession
or Catalogue
#

250



Unnamed 4 masted
ship-in-a-bottle
model - scratch
built

1991.450

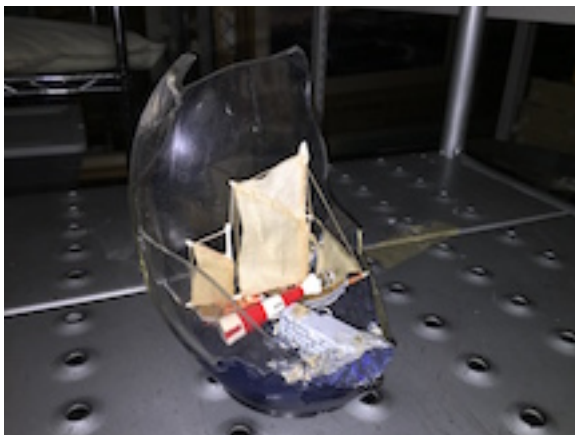
254



Princess
Marguerite' -
Waterline Model

1991.350

255



model of a red and
grey hulled boat
passing buoy and
lighthouse - Scratch
built

1991.483

256



3 mast sailing yacht
- Scratch built 1984.176

264



Model ship
structure - scratch
built No Accession
or Catalogue
#

267



Sulluk' Sampan
river craft - scratch
built M975.20.5

272



River craft model
from East Pakistan,
probably a "Goina" - M975.20.4
Scratch built

298



half hull

1991.792

299



half hull

1991.457

302



half hull,

No Accession
or Catalogue
#

303



half hull,

No Accession
or Catalogue
#

308



Research Vessel
'Calypso' - kit
plastic

2005.028.001

310



Dec 6, 99 #18?

No Accession
or Catalogue
#

315



half hull,

No Accession
or Catalogue
#

317



Clyde Puffer 'Inch
Holm' - Scratch
built

2007.1053

382



Chinese Junk -
Scratch built

No Accession
or Catalogue
#

383



Cabin Cruiser -
Scratch built

No Accession
or Catalogue
#

385



Various Pond Yacht
Racer Hulls - Fibre
glass moulds

No Accession
or Catalogue
#

restart here

