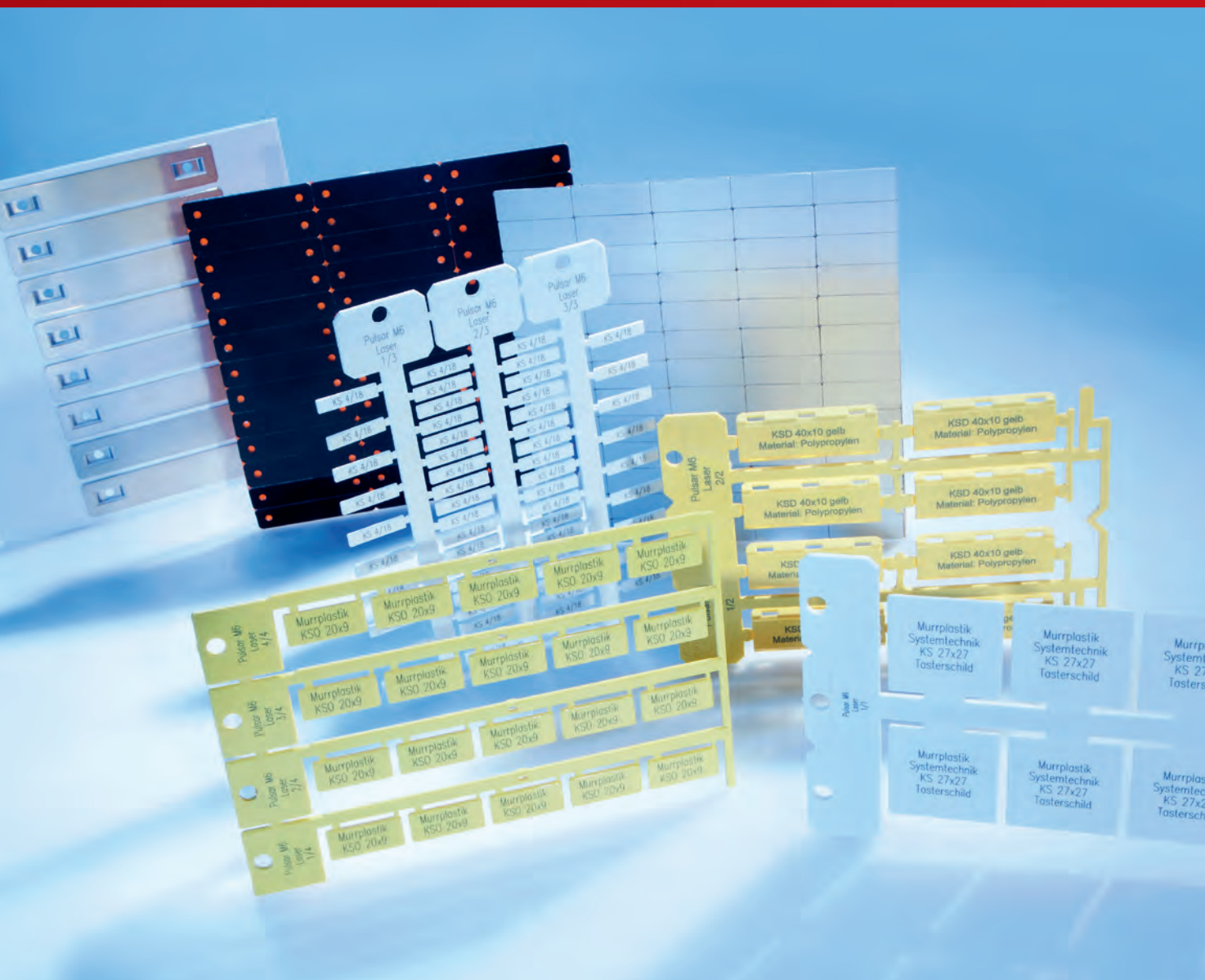




ACS Labeling Systems

A universal system for labeling work

Contents



THE COMPANY

International expertise Page 4/5

Quality, production and development Page 6/7

SOFTWARE

Any label – one software package Page 8/9

LABELING SYSTEMS

Labeling single wires, cables, conduits and media hoses Page 10

Terminal block labeling Page 11

Equipment/equipment location labeling Page 12

Labeling control/signaling units and plant equipment Page 13

LABELING OVERVIEW

Product and material overview Page 14/15

LABELING SYSTEMS

Inkjet – rapid, quality color Page 16/17

Laser – fast and permanent Page 18/19

Thermal transfer – a wide choice of labels Page 20/21

Plotter – suitable for universal use Page 22

Plotter – with optional engraving Page 23

Engraving – highly durable and economical Page 24/25

OUR SERVICE FOR YOU

Service portfolio for labeling Page 26/27



International expertise



AT YOUR SIDE, WORLDWIDE ...

- Distribution
- Warehousing
- Production
- Service

THE MARKET LEADER'S QUALITY DEMANDS

Murrplastik is one of the world's leading manufacturers of manual and computerized labeling systems.

For many years, the labeling system made by Murrplastik has proven its worth in difficult day-to-day operations – from manufacturing plant in the automotive industry to rail technology. The tests carried out in our in-house testing facility guarantee the highest quality when it comes to longevity, robustness and economical implementation.

LABELING SOLUTIONS FROM A-Z

Murrplastik offers labeling systems as complete solutions – everything from a single source, everything fits perfectly together.

Plotters, engraving machines, printers, laser machines and labeling software from Murrplastik can be used for

- A wide range of applications
- Label retrofitting
- Software and hardware as integrated or standalone solutions
- Labeling as a service

Electronic component labeling has been a field in constant flux since labeling requirements began. Many years ago, Murrplastik Systemtechnik GmbH developed a labeling system that has since been used for the rapid and simple labeling of systems and components.

With this approach to labeling, only a few components are required to achieve rapid, clean and durable results.

Over the last few years user software has taken on a different complexion. User software has evolved to include various options for engraving, printing, laser engraving and plotting. Links to overriding CAD/CAE systems make it easier to transfer data to the output devices free of errors.

A constantly expanding range of materials makes it easier to adapt to today's label requirements.

To sum up, the original (badly) handwritten label has evolved into a truly universal labeling system designed to meet all labeling requirements and always with the focus on our objective:

“We save you time”.

APPLICATIONS

- Single wire
- Cables
- Cables
- Corrugated conduits
- Terminals
- Equipment
- Equipment locations
- Hydraulic components
- Pneumatic components
- Mechanics
- Control and signal units
- Sensor systems
- Actuators
- Enclosures
- installations

LABELING SYSTEM

Labeling with ...

- Plotter
- Hand pen
- Automatic laser
- Engraving machines
- Laser printer
- Thermal transfer printer
- Inkjet printers

Quality, production and development

QUALITY

Murrplastik is one of the world's leading manufacturers of manual and computerized labeling systems.

- A tried and tested solution
- For manufacturing plant in the automotive industry
- Railway engineering
- In-house testing facilities
- Top quality
- Durability
- Ruggedness
- Economical deployment

We test the material against a huge range of parameters.

- Flammability
- Halogen-free rating
- UV light stability
- Ageing
- Functional testing
- Hardness test
- Vibration, shock and impact testing
- Smudge resistance
- Scratch/abrasion resistance
- Brine spray test



Rail vehicles



Automotive industry



Halogen-free rating



Flammability



Temperature range



Smudge resistance test



UV light stability test

PRODUCTION

Murrplastik offers labeling systems as complete solutions – everything from a single source, everything fits perfectly together.

- Plotter
- Engraving machines
- Inkjet printers
- Laser machines
- Labeling software
- A wide range of applications
- Software and hardware as integrated or standalone solutions
- Labeling as a service

DEVELOPMENT

From the beginning, the labeling of electrical components was a continuously developing topic, driven by the industry.

- Cost-effective, rapid and flexible production
- New, innovative solutions
- Sophisticated tools
- Optimal lettering
- Software-driven labeling
- Large range of label holders and labeling machinery
- Assured, high-speed production



Labeling everything with one software package

FROM THE PLANNING STAGE RIGHT THROUGH TO THE LETTERING ON THE LABEL PLATE

Plot, print, engrave and laser with one software package! The universal workstation at local or network level. Electric, mechanical, pneumatic or hydraulic labeling tailored to re-

quirements. One software application for company-wide labeling and one central labeling workstation keeps procurement, training and maintenance costs to a minimum.



THE NEW ACS SOFTWARE

The software offers you many new features and functions for the simple and optimal creation of labeling projects.

- Support for common graphics formats (BMP, PNG, JPG, WMF, HPGL, PLT)
- Enhanced symbol library
- Data import from a range of CAD systems
- Data management using the Project Explorer
- The list of recently opened projects is grouped into database and graphics projects

All in all, your benefits include:

- Process optimization
- Time savings
- Cost reductions
- Clear-cut workflows

Selection of printed/non-printed datasets

Targeted selection of already printed/not yet printed datasets, so as to optimize your workflows.

Status bar symbols

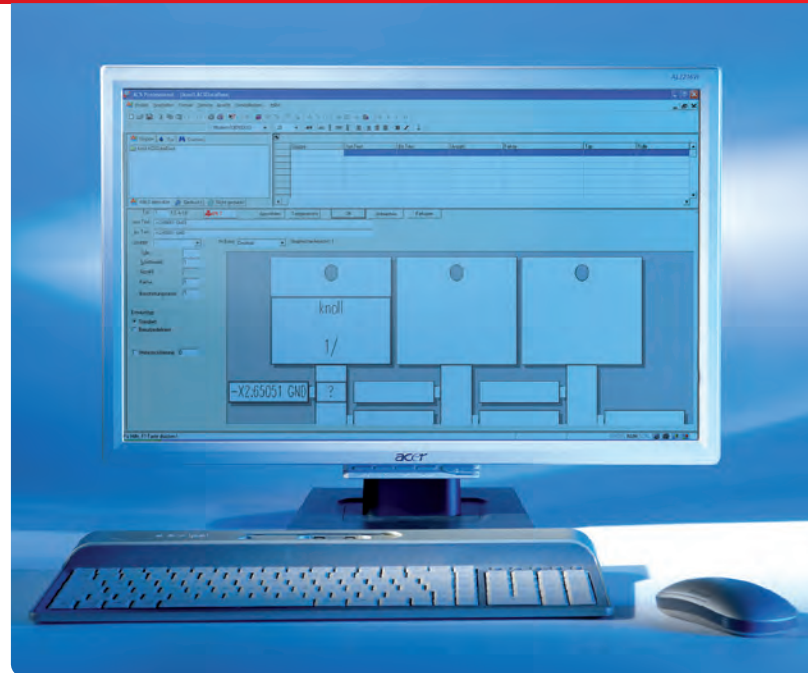
Direct access to frequently-used program modules – such as system parameters, printer settings, parameter editor – via status bar icons.

Online Help

By pressing the F1 button, the help topic currently required is displayed.

Multi-frame feature

Display and output of the labeling text in the database project onto different types of label in a single process.



SYSTEM REQUIREMENTS

Operating system

- WIN XP Pro
- WIN Vista 32/64-bit
- WIN 7 32/64-bit

Hardware

- Hardware as required by the OS

Labeling of single wires, cables, conduits and media hoses



MEETING THE STANDARD

European standard EN 60204 (VDE 0113 Part 1) stipulates the unique identification of cables, components and terminal blocks in switch cabinets.

The identification must also be clearly visible and legible. Murrplastik's labeling system satisfies all of these requirements. The Murrplastik labeling system can be used to label

- Single wires
- Terminals
- Control gear
- Equipment locations
- Control and signal units
- and assemblies

from a wide range of manufacturers.

Data processing is handled by the ACS software. Data import routines for CAD/CAE packages support the project-specific import of labeling information.

Murrplastik is the independent labeling system manufacturer.

LABELING MATERIAL

- Label sleeves
- Label holders
- Label plates

ENGRAVING MATERIAL

- Duomatt
- Triomatt
- Alumatt
- Anodized aluminum

Engraving labels constitutes one of the most durable yet economic labeling methods available.

- Extremely durable
- Resistant to environment influences and mechanical stress
- Wide range of attachment options
- Many different formats
- Wide range of options
- Cannot become detached
- Label retrofitting possible

Terminal block labeling



TERMINAL BLOCK BRANDS

- Adels
- Allen Bradley
- Beckhoff
- Conta Clip
- Entelec
- Klemmsan
- Legrand
- Lütze
- Murrelektronik
- Phoenix
- Siemens
- Schlegel
- Sprecher und Schuh
- Wago
- Weidmüller
- Wieland
- Woertz
- etc. ...

LABEL PLATES

Label plates	Compatible terminal block brands
KAB	Allen Bradley, Entelec, Lütze, Woertz
KLG	Legrand
KMR	Conta Clip, Entelec, Klemmsan, Schlegel, Weidmüller and Wago
KPX	Entelec, Murrelektronik, Phoenix, Siemens and Wago
KSI	Siemens
KWI	Entelec, D+E, Legrand, Phoenix, Sprecher + Schuh, Telemecanique, Wago and Wieland
WGO	Beckhoff, Entelec and Wago
TK	Adels

Component and component location labeling



LABEL PLATES

Label plates	Compatible equipment brands
SKS	Siemens Sirius, Lütze
KSS	ABB, Conta Clip, Escha, Festo, IFM, Pepperl + Fuchs, Siemens, Turck
KSA	AEG and Square D
KTE	ABB, IFM, Murrelektronik, Telemechanique
KAB	ABB, Allen Bradley, Finder
ABB	ABB, Finder, Lumberg, Wago
KMO	Möller, Indramat, Murrelektronik
KS	Escha, IFM, Lumberg, Murrelektronik, Pepperl + Fuchs, Turck
KSF	Festo, Lumberg, Moeller, Murrelektronik, Pepperl + Fuchs
KSL	Bosch/Rexroth, Lumberg
KES	Escha, Murrelektronik, Turck
KPF	Pepperl + Fuchs
WGO	Beckhoff, Euchner, Wago
B&R	B&R X20 switchgear
KSK	Various manufacturers
KSZ	Harting heavy-duty plug connectors

Direct labeling

- Label plates for snap-fitting to equipment
- Label retrofitting possible via the use of sleeves for affixing with cable ties to cabling, hoses and equipment or by using adhesive label plates and holders

BZS labeling system

- Track-mounted system for equipment location labeling can be stuck, bolted or riveted on
- The BZS system is extremely versatile

The labeling rail with the snap-in labels provides vertical and horizontal designation of terminal blocks and other components. The system can be fitted on the top hat rail, C-rail or the cable duct. The KS/KSO labels are simply snapped into the label holder.

EQUIPMENT BRANDS

- ABB
- AEG
- Allen Bradley
- Beckhoff
- B&R Automation
- Bosch/Bosch-Rexroth
- Conta Clip
- Escha
- Euchner
- Festo
- Finder
- GE
- Groupe Schneider
- Harting
- IFM
- Indramat
- Lütze
- Lumberg
- Möller
- Murrelektronik
- Pepperl + Fuchs
- Phoenix
- Siemens
- Turck
- Universal application
- Wago
- etc. ...

Control and signaling unit labeling and plant labeling



VARIOUS OPTIONS FOR LABELING CONTROL AND SIGNALING EQUIPMENT

Manufacturer's label holder

A label from the Murrplastik labeling system is snapped or inserted into the original label holder (e.g. ABB, Allen Bradley, Möller, Siemens, etc.) supplied by the manufacturer of the control or signaling equipment.

Compatible Murrplastik label plates:

- Duomatt DM engraving material
- ELO/ELW sheet labels
- KSK/KS labels

Neutral, universal labels

Compatible with control and signaling gear from any manufacturer. This labeling method involves affixing any label plate desired from the Murrplastik labeling system program directly onto the control cabinet in any position.

Compatible Murrplastik label plates:

- KSK/KS labels
- Duomatt DM / TMG engraving material
- Alumatt ALM / ALU engraving material
- ELO/ELW sheet labels

Product and material overview

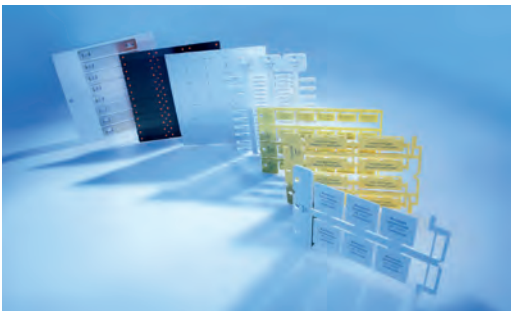
PROCEDURE	EQUIPMENT	BENEFITS
<p>INKJET</p> 	 <p>pictor² INKJET MARKING BY MP</p>	<ul style="list-style-type: none"> • Photorealistic quality • High print speed • Durable lettering • USB / WLAN / Ethernet ports • High productivity
<p>LASER</p> 	 <p>pulsar LASER MARKING BY MP</p>	<ul style="list-style-type: none"> • Permanent, durable labeling via carbonization • Possible to process a range of different materials • High productivity and labeling speeds • Minimal operating costs • Contactless labeling • Minimal maintenance required • No consumables used
<p>THERMAL TRANSFER</p> 	 <p>pavonis THERMO MARKING BY MP</p>	<ul style="list-style-type: none"> • Large output volume • Outstanding print quality • High-durability lettering • Easy handling • Large label range • USB and Ethernet ports
<p>PLOTTING / ENGRAVING OPTION</p> 	 <p>MVPS-G3 SERIES</p>	<ul style="list-style-type: none"> • Suitable for universal use • High-quality lettering • Labeling of electric, pneumatic and mechanical components • All plotters in the MVPS-G3 series can be converted to engraving machines • Simple conversion • Extensive selection of engraving materials
<p>ENGRAVING</p> 	 <p>CAM 100 / 200 + MGS 40-TO</p>	<ul style="list-style-type: none"> • Product range offers choice of engraving machines • Large stylus and graver range • Extensive selection of engraving materials • Two-ply and multi-layer materials • Large selection of plastic and metal labels

MATERIAL

APPLICATION



- Polycarbonate



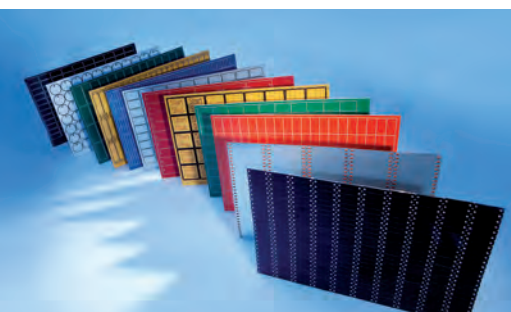
- Polycarbonate
- Stainless steel
- Anodized aluminum
- Polypropylene



- TEP polyester labels
- TEG fabric labels
- TES self-laminating vinyl labels



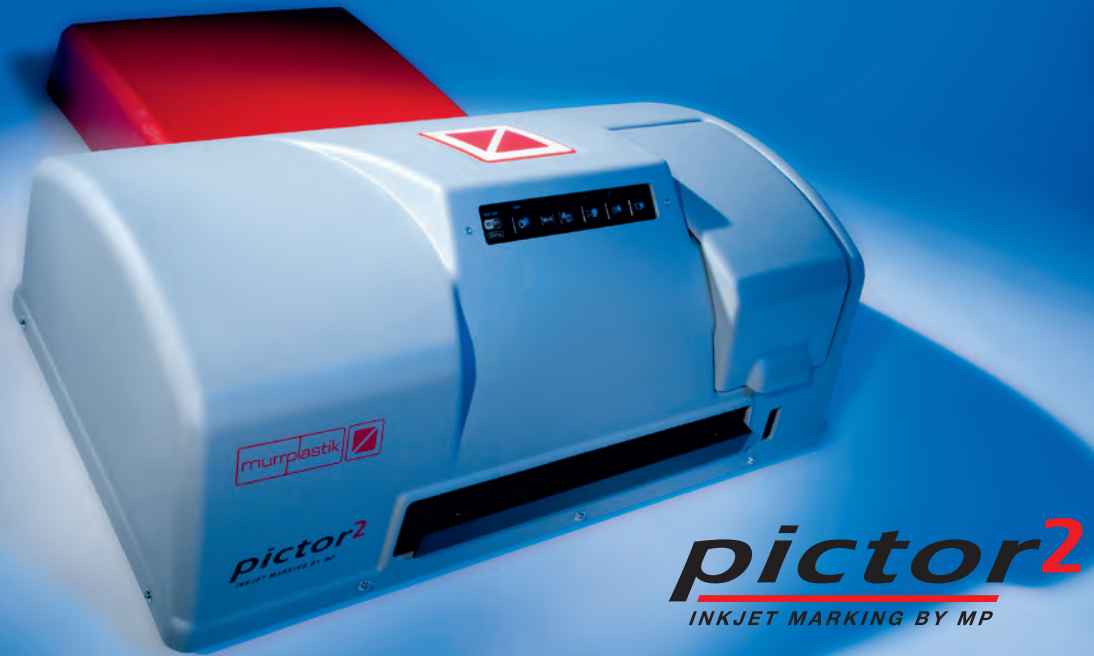
- Polycarbonate
- Wide range of label materials
- Duomatt engraving option



- Duomatt
- Anodized aluminum
- Triomatt
- Alumatt



Inkjet – rapid, quality color



ADVANTAGES

- Photorealistic quality
- High print speed
- Durable lettering
- Simple initial start-up
- Works with standard ACS software

INKJET LABELING PRINTER WITH ENLARGED PRINT AREA

With its expanded printing area, its vast printing capacity of up to 600,000 characters per cartridge and its integrated WLAN/Ethernet interfaces, the new *pictor*² inkjet labeling printer from Murrplastik sets a new benchmark for color-based inkjet printing systems.

And the *pictor*² printer has naturally inherited crisp, photorealistic quality at 720 dpi and fast printing speeds from its predecessor model. Repetition accuracy and operational safety are 100% assured.

For the new *pictor*² unit, Murrplastik's engineers have developed a special kind of ink. This durable lettering is thus ideal for tough day-to-day industrial use.



Inkjet



Laser



thermal transfer



Plotting



Engraving

A **key additional benefit** is the significantly improved cartridge lifetime, with a capacity boost of up to 50%.

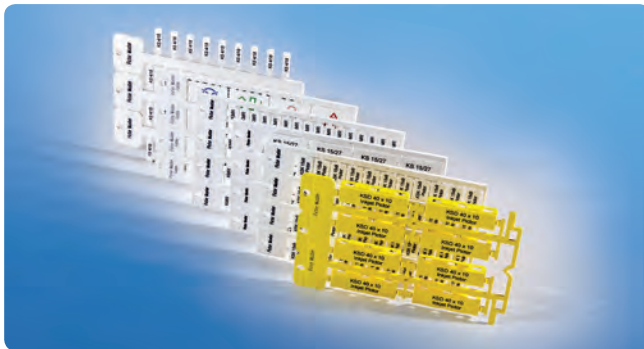
Six polycarbonate labeling mats are attached to the base plate and printed in parallel in just 90 seconds.

Different types of label can also be “mixed together” on a single base plate. Accordingly, a company can now produce its entire daily requirements for label plates “on the fly” in just a few minutes. Technical design data can be imported into the ACS labeling software via interfaces to CAD systems.

With its attractive exterior and a weight of just 44 lb, the **pictor²** is the perfect workstation printer.

TECHNICAL DATA

Power unit	100–240 V AC universal
Print area	Approx. A3 for 6 aluminum base plates
Print speed	from 90 sec. for 6 base plates
Interface	USB / LAN / WLAN
Colors	<ul style="list-style-type: none"> • 7 color cartridges • 7 cleaning cartridges • 1 gloss (empty)
Print volume	Approx. 600,000 chars per cartridge (if font size set to 24 in ACS software)
Print resolution	720 dpi
Nozzles per color	180
Min. drop size	1 pl (picoliter)
Ink	Special ink
Dimensions	Approx. 25.2 x 9.8 x 28.7 in (W x H x D)
Weight	Approx. 44 lb



Wide range of labeling materials available



User-friendly operation



6 labeling mats with rapid, permanent color labeling

Laser – fast and permanent



pulsar

LASER MARKING BY MP

ADVANTAGES

- Permanent, durable labeling via carbonization
- Possible to process a range of different materials
- High productivity and labeling speeds
- Minimal operating costs
- Works with standard ACS software
- Contactless labeling
- Minimal maintenance required
- No consumables used

PERMANENT, RAPID LABELING FOR A WIDE VARIETY OF MATERIALS

Individual, abrasion-proof laser labeling for metal and plastic label plates, with the new *pulsar* laser labeling system from Murrplastik.

- Hard-wearing, high-quality labels
- Huge variety of labeling materials
- High-performance output
- USB
- ACS software
- Minimal operating and lifecycle costs

The *pulsar* can produce label plates for

- Wires
 - Cables
 - Terminals
 - Control and signal units
 - Switchgear
 - Media equipment
- and much, much more...



Inkjet



Laser



thermal transfer



Plotting



Engraving

LONG-TERM LABELING

- Superb durability for finished labels
- Lettering is 100% permanent and is as durable as an etched inscription
- Laser lettering is not bleached out by UV radiation
- Complies with stringent laser class 1

IN LINE WITH THE TIMES - AN EXCELLENT PRICE-PERFORMANCE RATIO

- Minimal operating costs
- The laser needs no consumables whatsoever
- High output volume
- Up to 10,000 label plates per hour

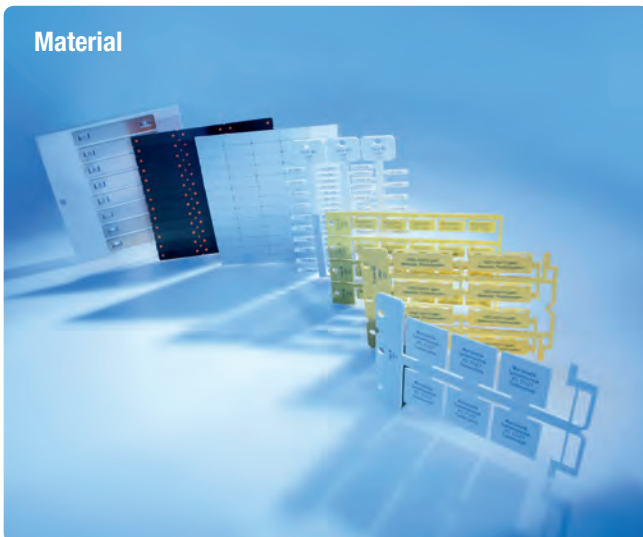
THAT'S FLEXIBILITY!

- From customized individual labeling to batch-mode production
- User-specific labels
- End-to-end machine labeling
- Huge range of materials

TECHNICAL DATA

Laser source	6 watt solid state laser
Wavelength	1064 nm
Modulation	frequency 15 kHz – 200 kHz
Cooling	Air
Input voltage	230 V / 50–60 Hz
Power	0.5 kW
Dimensions	24.8 x 20.1 x 29.7 in (H x W x D)
Weight	119 lb
Interface	USB

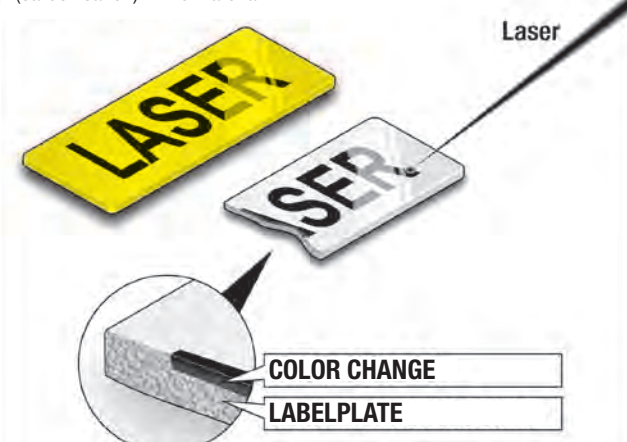
Material



Label plates based on a variety of materials: polycarbonate, polypropylene, anodized aluminum, stainless steel

Principle

Laser inscription using color changes (carbonisation) in the material.



The high quality of the laser labeling produced by the **pulsar** results from carbonization in the labeling material.

Thermal transfer – a wide choice of labels



pavonis
THERMO MARKING BY MP

ADVANTAGES

- Large output volume
- Outstanding print quality
- High-durability lettering
- Easy handling
- Works with standard ACS software
- Large label range
- USB and Ethernet ports

THERMAL TRANSFER PRINTER – WITH A HUGE RANGE OF LABELS

The new *pavonis* thermal transfer printer offers the best price-performance ratio of any printer in its class.

It offers high-resolution 300 dpi printing at print widths of up to 106 mm and is the new standard printer for label roll materials as supplied by Murrplastik.

Its Ethernet interface means it can be installed on print servers, so that it can then be used by multiple workstations.

The ribbon bracket for 300 m rolls reduces the frequency at which print film needs to be changed.

The integrated cutter and optional external dispensing assembly makes print process handling even simpler.



Inkjet



Laser



thermal transfer



Plotting



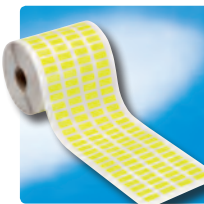
Engraving

**TEP polyester labels**

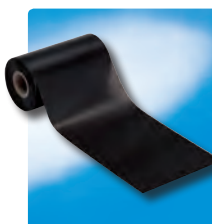
- Satin gloss polyester film
- Outstanding color fidelity
- Precise lettering
- For adhesion to metal, gloss coatings and high surface energy plastics
- High initial adhesion
- Adhesion on steel after 72 h

**TEG fabric labels**

- The self-adhesive woven nylon fabric is both flexible and tear-resistant
- High initial adhesion
- Especially suited for the tagging of electrical systems, identifying operating facilities, for adhesion over edges or radiuses, for cable marking or for use in switch cabinet installations

**TES self-laminating vinyl labels**

- Self-laminating cable tags
- Ideal for labeling cables, lines and wiring
- Additional protection from external environmental factors
- Supplied on backing paper
- Extremely flexible and supple
- The high-transparency laminate ensures optimum legibility

**FH resin-based ribbons**

- Ideal for printing on glossy synthetic films
- Applications for plastic labels
- Demanding stability requirements
- Smudge and scratch-proof
- Optimum stability

TECHNICAL DATA

Resolution	300 dpi
Printing method	thermal transfer
Print speed	50.8 – 127 mm/s
Maximum print width	106 mm
Dimensions (L x W x H)	314 mm x 213 mm x 188 mm
Ribbon reels	300 m, 25.4 mm core
Label reels	127 mm outside diameter
Processor	32-bit RISC high-performance processor
Memory	<ul style="list-style-type: none"> • 4 MB flash memory • 8 MB SDRAM • SD card reader for expanding memory to max. 4 GB
Ports	<ul style="list-style-type: none"> • RS-232 (max. 115,200 bps) • Centronics • USB 2.0 (full-speed mode) • Ethernet
Power	
AC voltage input	100–240 V universal switching power supply
Direct current output	24 V at 3.75 A (external adapter)
Material type	Continuous-feed, pre-cut, black stripe, fanfold, notched
Material winding	Outside-wound sheet label
Material width	20–112 mm
Material thickness	0.06–0.19 mm, max. 150 g/m ²
Safety standards	FCC Class B, CE Class B, C-Tick Class B, UL, CUL, TÜV/GS, CCC
Accessories	<ul style="list-style-type: none"> • Preinstalled cutterassembly • USB cable • External universal switching power supply • Power cable • Label reel holder • 2 x fixing plates • 2 adapters for fitting film rolls • Paper core for film winding • Driver CD

Plotter series – suitable for universal use



UNIVERSALLY USABLE FOR HIGH QUALITY LABELING

The MPVS-G3 plotter systems make up a universal labeling system serving a huge range of labeling needs.

Fast and safe with an extremely high quality typeface, the systems are suitable for labeling electrical, pneumatic and mechanic components.

The plotter system is perfectly matched to the ACS labeling software.

With its modular units – constantly improved to match real-world applications – the plotter system radically simplifies day-to-day work.

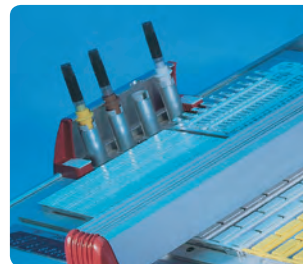
ADVANTAGES

- Suitable for universal use
- High-quality lettering
- Labeling of electric, pneumatic and mechanical components
- Engraving option

TECHNICAL DATA

MVPS-G3-T / MVPS-G3 / MVPS-G3-XXL

Plotter type	Flatbed plotter
Max. plotting area	295 mm x 210 mm (MVPS-G3-T) 450 mm x 300 mm (MVPS-G3) 800 mm x 300 mm (MVPS-G3-XXL)
Speed	Max. 40 cm/s
Ports	Parallel (Centronics), USB Level 1.1
Drive	Two-phase stepping motor
Pen station	Max. 4 pens with double sealing
Base plate population	4 / 10 / 20 plates



PEN station

The pens are kept tidy and can stay in the machine permanently. The plotter pens are closed airtight in the pen station, thus preventing them from drying out.



Automatic calibration

Should it be necessary to re-calibrate the machine during a job, then this can be done at the touch of a button. After automatic calibration, the pen goes back to the position at which the job was interrupted and finishes the labeling work.



High population capacity

Up to 20 base plates can be laid out on one MVPS-G3 series plotter board. This means that base plates do not often need to be replaced during operation.

MVPS-G3 series convertible to fully-featured engraving machines



Inkjet



Laser



thermal transfer



Plotting



Engraving



A PLOTTER AS AN ENGRAVING MACHINE!

The MVPS-G3 series plotter can be simply and easily converted into a fully-featured engraving machine complete with vacuum cleaner. Conversion is very straightforward: the spindle unit is affixed on the plotter in place of the pin unit and connected to the vacuum cleaner and a control unit for the spindle.

Turning any plotter into a multifunction machine! Long wait times for external engraving jobs are now a thing of the past. Saving you time and money.



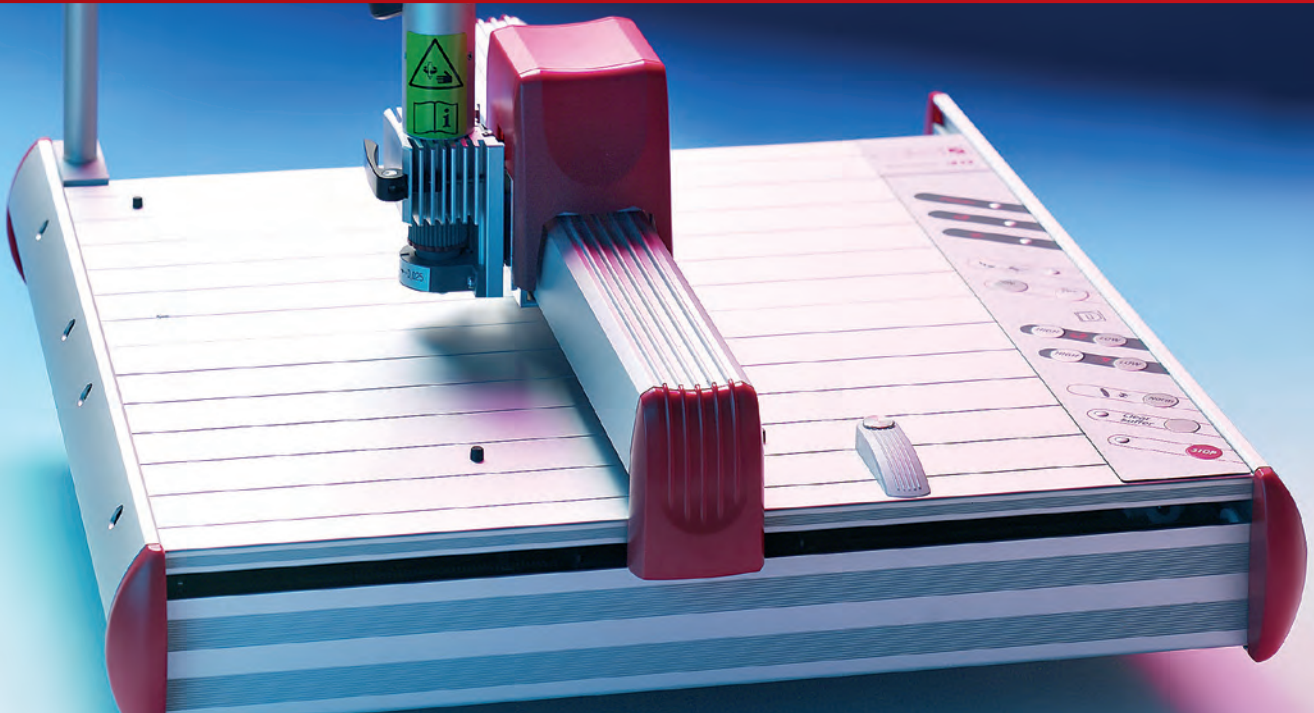
ADVANTAGES

- All plotters in the MVPS-G3 series can be converted to engraving machines
- Simple conversion
- Extensive selection of engraving materials

TECHNICAL DATA

Engraving spindle	with assembly carriage and graver 0.5 mm, 15°
RPM	min. 5,000 RPM, max. 50,000 RPM
Torque	6 Ncm
Power consumption	120 W
Spring chucks	Shaft diameter 3 mm
Scope of delivery	
Control unit	G3/VEC Vacuum Engraver Controller
Vacuum cleaner	G3/VC Vacuum Cleaner

Engraving – MGS 40-TO



ENGRAVING WITH A TWIST

The new MGS 40-TO engraving system extends Murrplastik's portfolio of engraving systems.

The small and powerful system is equipped with numerous new features, such as:

- Stylus configuration tool
- For in-process configuration of speed of travel and engraving speed

Stylus zero-setting tool

Zero-setting is used to set the stylus cutting depth to zero in order to enable the correct adjustment of the stylus immersion depth (engraving depth) with the depth regulator.

Quick-release chuck

The new quick-release chuck system makes it very easy to remove and replace the spindle.

ADVANTAGES

- High engraving speeds
- Large working area
- Compact and rugged form factor

TECHNICAL DATA, BASE UNIT

Mechanics	Flatbed
Working area	300 x 200 mm
Engraving speed	max. 20 mm/s
Interface	USB Level 1.1
Data buffer	16 MB
Drive	Two-phase stepping motor
Supply voltage	100-240V AC 50-60 Hz
Input current	0.7 A max.
Dimensions	440 mm x 440 mm x 125 mm
Weight	Approx. 6 kg
Engraving spindle	
RPM	min. 5,000 RPM, max. 50,000 RPM
Frequency	83–830 Hz
Power consumption	120 W
Motor type	Three-phase AC, asynchronous, brushless
Enclosures	Aluminum
Ball bearing type	Steel, dual
Cooling	Self-ventilating with in-built fan

Engraving – Cam 100 / 200

All-in-one system



Inkjet



Laser



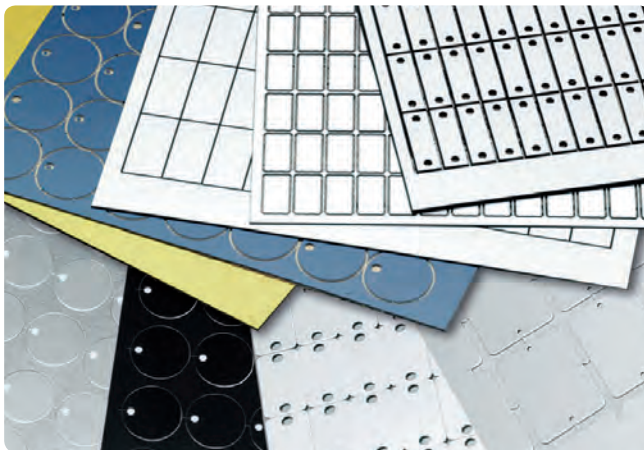
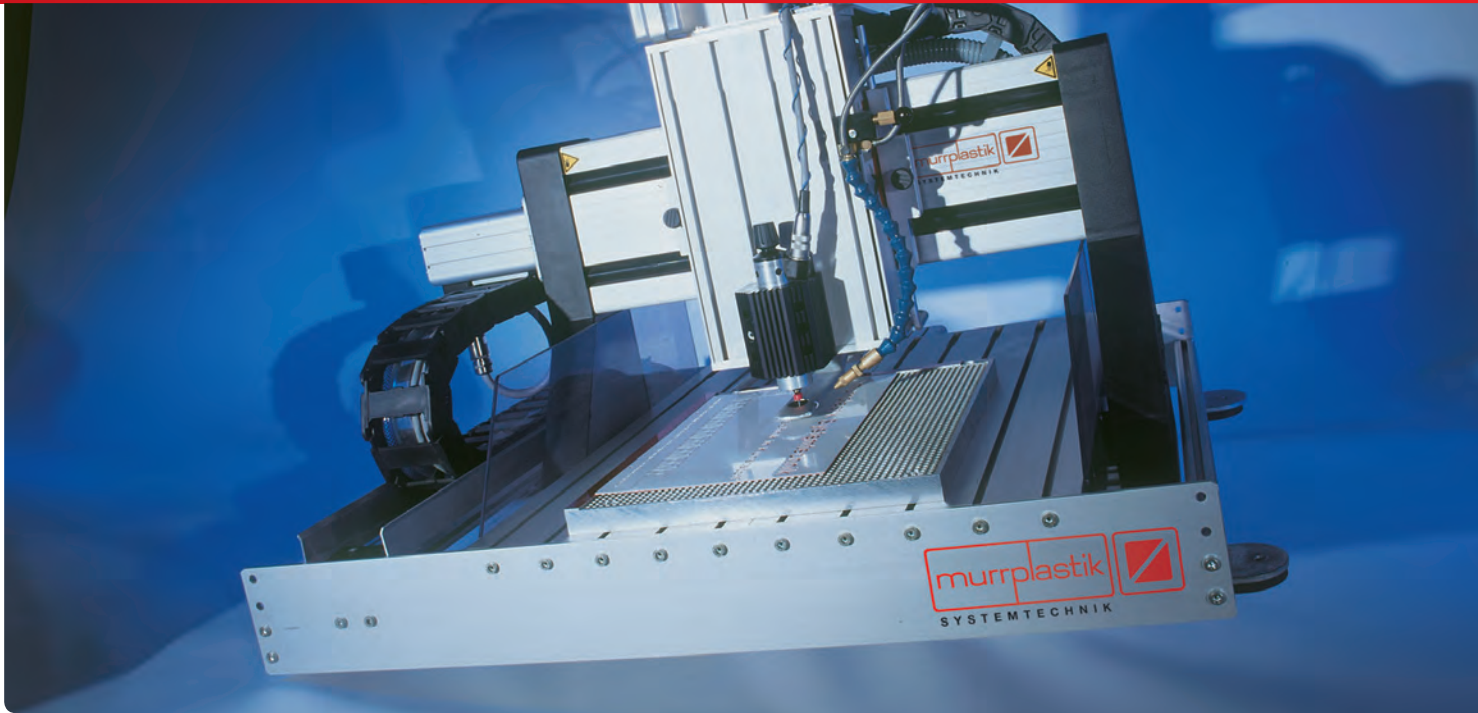
thermal transfer



Plotting



Engraving



ADVANTAGES

- Device features can be customized to match individual requirements
- Open housing technology
- High hourly output
- High gripping capacity
- Ball screw drive
- High repeat accuracy
- Maintenance-friendly

TECHNICAL DATA

	CAM 100 complete system	CAM 200 complete system
Range of travel	X/Y 330 x 290 mm	X/Y 540 x 500 mm
Stroke	75 mm	75 mm
Set-up surface	500 x 600 mm	750 x 850 mm
Ports	USB	USB
Mechanics	<ul style="list-style-type: none"> • Surface-milled, face accuracy < 0.05 mm • 3 ball screw drives, 16 x 5 mm with flange bearings • Repeating accuracy +/- 1/100 mm 	<ul style="list-style-type: none"> • x/y/z infeed, backlash-free, stepped motor drive • Rubber cover with teflon coating • 3 end and reference switches, accuracy < 1/100 mm

Labeling services



TAILORED LABELING SERVICES

Murrplastik Systemtechnik supports companies for a hugely diverse range of labeling requirements. We have therefore seen that companies often pay less for outsourcing than they do for in-house labeling.

The reasons for this are obvious. A company that, for example, develops and installs control units before also putting them into service is usually under a lot of financial and time pressure to provide the necessary equipment and training for employees. Not to mention the fact that labeling tasks change constantly.

ADVANTAGES

- Short processing times
- Simple, flexible execution
- Rapid and cost-effective production
- Delivery within three working days
- No own investment needs
- On request we can fit labels into sleeves, assemble the holders and cable ties, perform packaging...

QUICK AND EASY EXECUTION

The labeling method is chosen to match the customer's requirements:

- Laser technology is synonymous with high operating speeds, supreme quality, short processing times and a really crisp typeface.
- Plotter technology boasts a very high population capacity and is suitable for virtually any material.
- Laser printing technology lends itself well to sheet labels, which are suited to many different applications.
- Engraving technology is used for metals and suitable plastic-coated materials. The weight of the font varies according to stylus size; repetition accuracy is very high.
- Inkjet technology features high-capacity population and also supports color printing.

CONVENIENT AND SECURE DATA EXCHANGE

It is remarkably easy to transmit labeling data. Simply send your data to our service centre by email (cablemgmt@murrplastik.com), on storage media or by fax.

Your data is processed without delay and can be stored for two years for subsequent projects on request.

Data format options are virtually unlimited: ASCII format, files from MS Office applications (Word, Excel) and data from ACS labeling software.

MAXIMUM QUANTITIES IN MINIMUM TIME

State-of-the-art equipment means a huge quantity of labels can be lettered in no time at all.

Full service

Murrplastik will supply the fully-fitted sleeves or the inscribed labels only. Just as the customer wishes.

High laser quality...

... for superior lettering quality on labels. Other inscription methods such as plotting and engraving are also offered.

Import of labeling data

... is possible from any CAE/CAD programs or Excel files.

REFERENCES

Many reputable firms in a very diverse range of sectors have been using this all-inclusive service:

- Automobile industry
- Railway engineering
- Switch cabinet construction
- General electrical engineering

The reasons are clear for sectors like these with an eye on maximum operating efficiency.



Head Office

Germany

Murrplastik Systemtechnik GmbH
Postfach 1143
71567 Oppenweiler
☎ +49 7191 4820
☎ +49 7191 482-92280
www.murrplastik.de
info@murrplastik.de

Americas

(North and South America)

Murrplastik Systems, Inc.
1175 US Highway 50
Milford, OH 45150
☎ +1 513 201 30 69
☎ +1 215 822 76 26
www.murrplastik.com
cablegmt@murrplastik.com

Austria

Murrplastik Systemtechnik GmbH
☎ +43 732 660 870
☎ +43 732 660 872
www.murrplastik.at
info@murrplastik.at

China

Murrplastik Asia Co., Ltd.
1802 Rm. No. 218
Hengfeng Rd.
200070 Shanghai
☎ +86 21 512 869 25
☎ +86 21 512 869 29
www.murrplastik.com.cn
info@murrplastik.com.cn

France

Murrtechnic S.à.r.l.
Zone industrielle Sud,
6 rue Manurhin
B.P. 62, 68120 Richwiller
☎ +33 389 570 010
☎ +33 389 530 966
www.murrtechnic.eu
murrtechnic@murrtechnic.fr

Italy

Murrplastik Italia S.r.L.
Via Circo, 18
20123 Milano
☎ +39 02 856 805 70
☎ +39 02 805 034 69
www.mp.de
info@it.mp.de

Switzerland

Murrplastik AG
Ratihard 40
8253 Willisdorf
☎ +41 52 646 06 46
☎ +41 52 646 06 40
www.murrplastik.ch
info@murrplastik.ch

Spain

Murrplastik S.L.
Paseo Ubarburu, 76
Pabellón 34, polígono 27
20014 San Sebastián
☎ +34 943 444 837
☎ +34 943 472 895
www.murrplastik.es
info@murrplastik.es



0701SL

13



MP8903864100