

# Moving from Active Trader Pro<sup>®</sup> 9.6 to **Active Trader Pro<sup>®</sup> Next Generation**

Active Trader Pro<sup>®</sup> Next Generation is a platform that has been shaped by input from traders like you. Powerful new technologies give you new features and capabilities. We've also made improvements in tools and navigation. Some things may look different or be in different places than you're used to. This guide will help make the transition easier.

#### Other sources for help:

- Weekly live webinars—sign up on [Fidelity.com/Learning-Center](https://www.fidelity.com/learning-center)
- Video demonstrations on [Fidelity.com/Learning-Center](https://www.fidelity.com/learning-center)
- Our experienced Fidelity Representatives at 800.544.6666



*Click the tabs to go directly to the section you're interested in.*

# The sooner you start using Active Trader Pro<sup>®</sup> Next Generation,

the sooner you can benefit from all the advances we've built into it.

## RANGE OF TRADING CAPABILITIES

- Single trade ticket for stocks, options, ETFs and mutual funds
- Multi-trade ticket to store and stage up to 50 orders
- Directed trading for equities and options
- Trade Armor™, a new and innovative visual approach to equity trading and risk management
- Place conditional trades directly in ActiveTraderPro, including One-Triggers-a-One-Cancels-the-Other order

## ADVANCED OPTION TRADING TOOLS\*

- Profit and loss and probability calculators
- Streaming option chain
- Option statistics
- Option technical filters

## INTERACTIVE TABBED CHARTING

- Advanced technical analysis, including support and resistance, stops, classic patterns, events, anticipated events, and Elliott Wave analysis<sup>†</sup>
- More than 60 indicators and advanced studies

## TOOLS TO KEEP YOU ON TOP OF THE MARKET

- Price alerts
- Streaming news with prebuilt searches for your positions, open orders, and more
- Prebuilt market and technical filters

And when you're on the go, take advantage of the seamless cross-platform experience by using our Web-based ActiveTraderPro.com<sup>®</sup>.

Fidelity Active Trader Pro Platforms<sup>SM</sup> is available to customers trading 36 times or more in a rolling 12-month period.

\*Options trading entails significant risk and is not appropriate for all investors. Certain complex options strategies carry additional risk. Prior to trading options, please read <http://www.optionsclearing.com/about/publications/character-risks.jsp>, and call 800-343-3548 to be approved for options trading. Supporting documentation for any claims, if applicable, will be furnished upon request.

<sup>†</sup>Anticipated events and Elliott Wave analysis are offered to customers who trade 120+ times over a rolling 12-month period.

# WORKSPACE

Here are some basics to help you become familiar with the Active Trader Pro Next Generation look.

The screenshot shows the Fidelity Active Trader Pro interface with several key areas highlighted:

- SHORTCUTS:** A set of three icons (Home, Back, Forward) in the top left corner.
- MAIN NAVIGATION TOOLBAR:** A horizontal bar below the shortcuts containing icons for Home, Back, Forward, and a search icon.
- LINK TOOLS:** A box on the left side containing a chain link icon and the text ".SPX".
- SETTINGS, HELP, FIDELITY.COM, LOGOUT:** A horizontal bar at the top right with text links for these functions.
- SIDEBARS:** A vertical bar on the right side containing various tool panels like "Stock Watch", "TRADE", and "Tools In Use".
- TOOLS IN USE:** A box at the bottom right containing a flag icon and the text "Tools In Use".

Screenshot is for illustrative purposes only.

## LINK

You can link tools to allow data in one tool to automatically update the other. Click the chain link icon to the left of the stock symbol entry box. The link icon will appear solid when the tool is linked. To unlink the tool, click the chain link again.

## TOOLS IN USE

Quickly see a list of all open tools, or restore a tool that you have minimized. To close a tool, click the **Close (X)** icon to the right of the tool name.

## LOGOUT

Click the **Close (X)** icon at the top right-hand corner of the screen to end your session and close the application.

**If you have questions, a Fidelity Representative can help. Call 800.544.6666.**

Any screenshots, charts, or company trading symbols mentioned, are provided for illustrative purposes only and should not be considered an offer to sell, a solicitation of an offer to buy, or a recommendation for the security.

## SIDEBARS

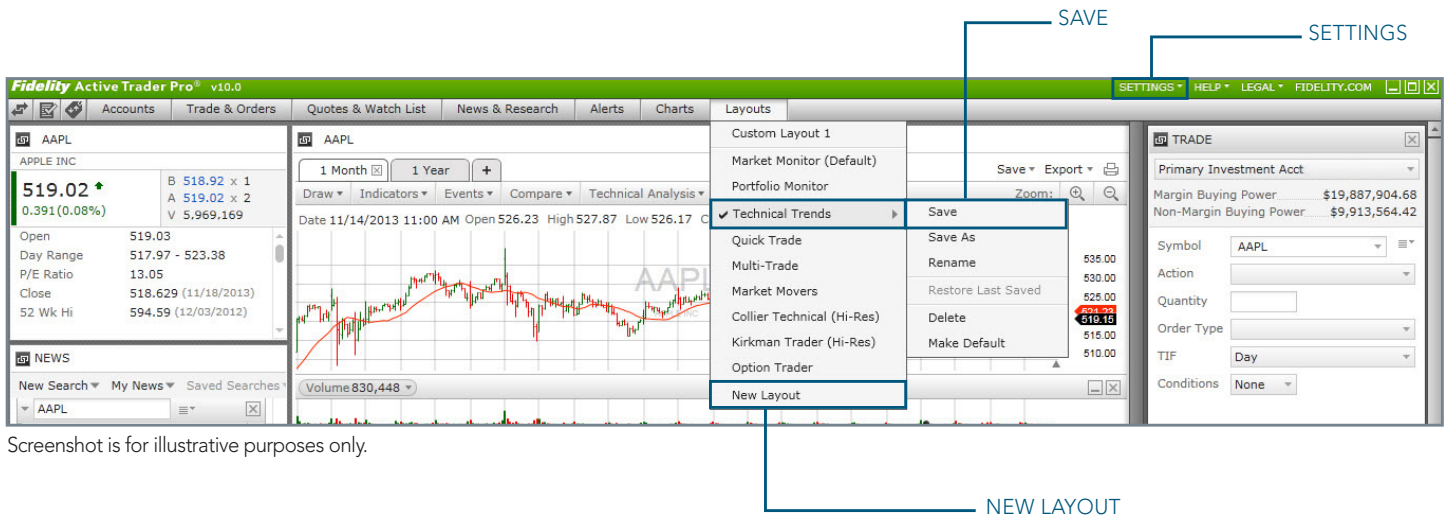
Sidebars let you quickly organize and access a group of tools. Sidebars snap onto the right and left sides of your workspace, expanding or collapsing with a click. This is an easy way to keep functionality at your fingertips—without your screen getting too crowded. Go to **Help/Settings/General** to enable sidebars.

## ALERTS

The flag will turn blue when a new trade, price, or education alert comes in, or red if you have a system alert message.

# CREATING LAYOUTS

Personalize your trading experience by customizing the location and appearance of tools on your screen.



Screenshot is for illustrative purposes only.

## CREATE A NEW LAYOUT

Select **Layouts/New Layout** from the main navigation menu. Enter the name for your custom layout, select the desired tools and placement, then save your layout.

*(Tip: Take a print screen of your 9.6 custom layout or have ATP 9.6 open to use as a reference when creating your new layout.)*

## USE A PREDEFINED LAYOUT

Select **Layouts** and click on one of the predefined layouts that matches your trading style. (Market Monitor is the default layout.) To customize a predefined layout, add or remove tools as needed, move tools to the desired location, select the layout you are working on, and click **Save As** or **Rename** from the flyout menu.

## FOR PREDEFINED OR CUSTOM LAYOUTS

Roll over the layout you have selected to Save, Save As, Rename, Delete, or Make Default. Click **Restore Last Saved** to return to the last layout version you saved.

## MANUAL SAVE

Select **Layouts** from the navigation bar. Click the layout with a check mark to the left. Click **Save**.

## AUTO SAVE

Go to **Settings/General/Auto Save Layout**. Click **Apply** to have changes saved automatically during your session.

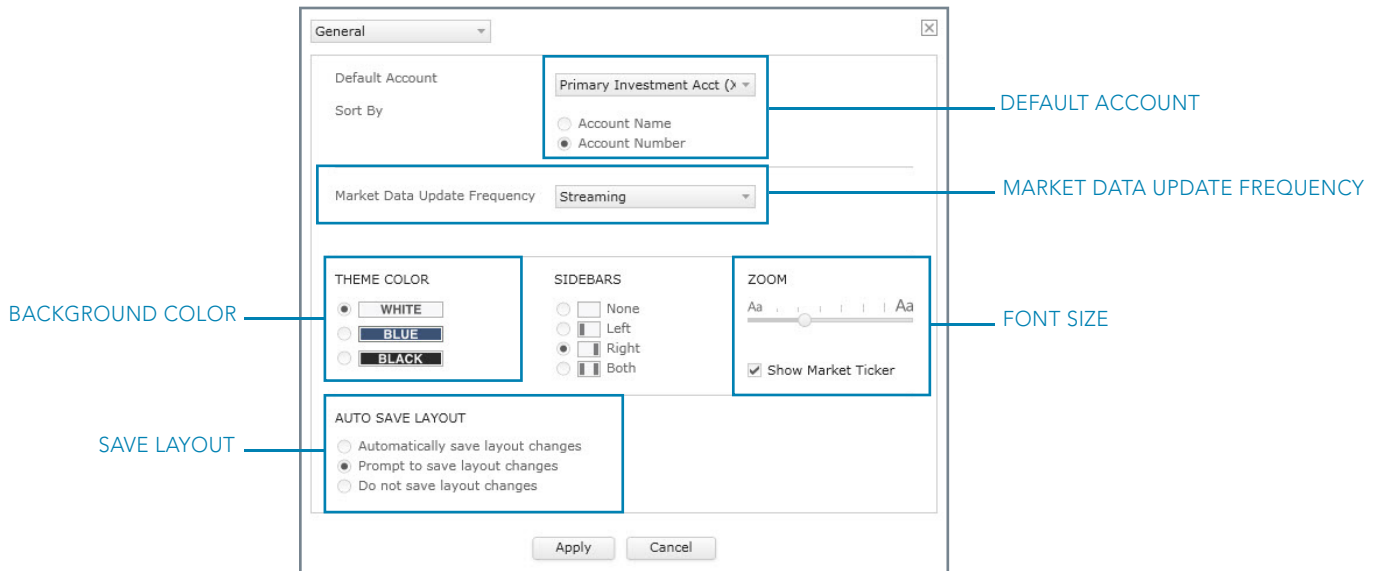
## PROMPT TO SAVE

Go to **Settings/General/Prompt to Save**. Click **Apply** to be prompted to save changes before switching layouts or logging out.

If you have questions, a Fidelity Representative can help. Call 800.544.6666.

# PREFERENCES AND SETTINGS

## Customize your trading experience



Screenshot is for illustrative purposes only.

### SELECT FONT SIZE

Select the desired font size by dragging the slider located under **Settings/General/Zoom**.

### SET BACKGROUND COLOR

Choose a white, black, or blue background color under **Settings/General/Theme Color**.

### SET MARKET DATA UPDATE FREQUENCY

Set the market data update frequency under **Settings/General/Market Date Update Frequency** (default is Streaming Market Data). *NOTE: The Next Generation version of ATP has higher system requirements. If your system slows down, change to a one- or two-second frequency, or limit the number of data-intensive tools like **Option Chain**, **Chart**, or **Directed Trade** you have open at one time.*

### SELECT DEFAULT ACCOUNT

Select the account that you would like to use as a default for account-based tools such as **Trade tickets**, **Balances**, and **Positions**. You can also choose to sort account lists alphanumerically by Account Name (nickname or registration) or by Account Number.

### SELECT DEFAULT TRADE TICKET

Select the default trade ticket under **Settings/Trade**. Choose the Standard (current default), Multi-Trade, or Directed Trade ticket.

### SELECT TRADE SETTINGS

Streamline your trading by using shortcuts under **Trade Settings**.

### SELECT COLUMN DISPLAY

Select the columns you would like to display in positions and watch lists, from **Settings/Positions/Watch List/Available Columns**. You can do the same for **History**, **Orders**, and **Option Chain Settings**.

### SELECT OPTION CHAIN DEFAULTS

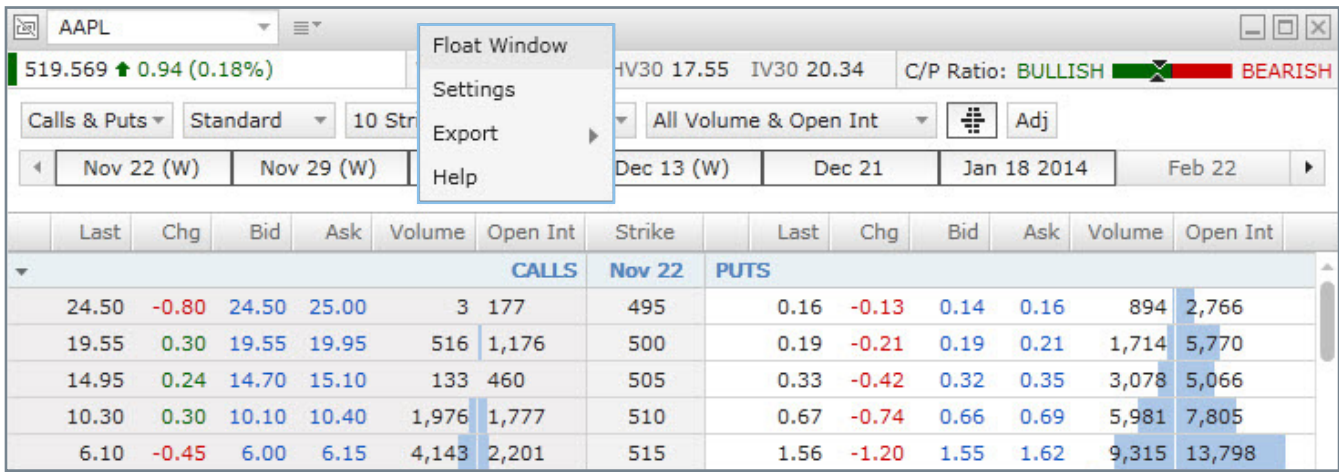
Set the strategy, number of strikes, or expiration you'd like to see under **Settings/Option Chain**.

If you have questions, a Fidelity Representative can help. Call 800.544.6666.

# NAVIGATION

## FLOAT WINDOW

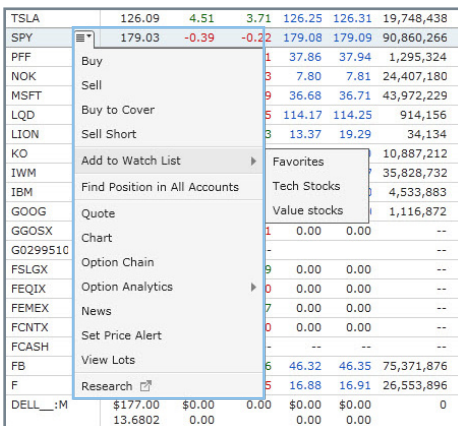
Right-click on the tool and select **Float Window**. Or, from the main navigation, hold the **Control** key and click to launch the tool in the floated state. To move the tool back into the Workspace, right-click on the tool and select **Dock Window**.



Screenshot is for illustrative purposes only.

## ACTION MENU

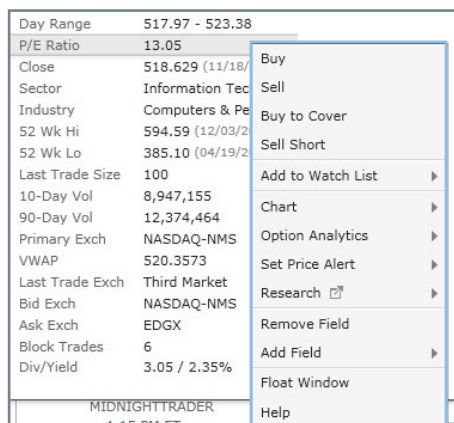
The action menu is located next to the **Symbol** field and allows quick access to a variety of tasks and shortcuts associated with a given security.



Screenshot is for illustrative purposes only.

## RIGHT CLICK

Right-clicking on a data point, column header, or tool will also provide you quick access to tools, shortcuts, and actions relevant to where you clicked, such as **Add/remove data fields** on **Quote**, **Add/remove** columns from a grid, **Show/hide information** for **Orders**, **Export data**, **Float the window**, and direct access to **Help** for that tool.



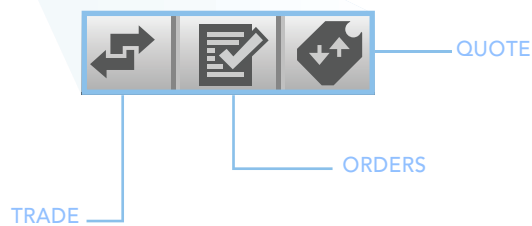
Screenshot is for illustrative purposes only.

If you have questions, a Fidelity Representative can help. Call 800.544.6666.

# NAVIGATION



Screenshot is for illustrative purposes only.



## SHORTCUTS

Use shortcuts located to the left of the main navigation toolbar to quickly launch your default **Trade ticket**, **Orders**, or the **Quote** tool.

## LOGIN

Use your Fidelity.com username and password to log on.

*NOTE: There is no offline mode in Active Trader Pro Next Generation. All your account information is now stored securely behind the Fidelity firewall, instead of on your computer, to prevent the risk of local database corruption. You no longer need the second optional ATP password.*

## LOGOUT

To log out, click the **Close (X)** icon at the top right-hand corner of the screen. That will end your Fidelity.com session and close the application.

## TO UPDATE SYMBOLS IN LINKED TOOLS

Double-click on a row in a grid tool.

## TO PRINT

To print positions and watch lists, right-click then select Print.

To print order confirmations, right-click when on the single-trade ticket or directed trade ticket order confirmation screen. To print order confirmations from other trade tickets, select the Print Screen key on your keyboard. Open a program like Microsoft word, select ctrl + v to copy that screenshot into the program.

Print will be integrated with Orders later this year. In the interim, right-click on Orders to export data to Microsoft Excel or a .csv file and then print from that program.

## TO MULTISELECT ROWS

Use **ctrl + click** to select multiple individual rows, or **shift + click** to select a group of rows, on any tool with information in a grid (**Multi-trade Ticket, Orders, Positions, Filters, Find Positions in All Accounts**, etc.).

The rows you've selected will highlight and you can then right-click to take the desired action.

If you have questions, a Fidelity Representative can help. Call 800.544.6666.

# TRADING

## SINGLE TRADE TICKET

Use the single trade ticket to trade stocks, options, ETFs, and mutual funds. The ticket is dynamic and displays all relevant fields based on the security and order type chosen, allowing for quick order entry.

## MULTI-TRADE TICKET

The multi-trade ticket lets you stage and save up to 50 orders and place them individually or simultaneously. The tool can be used to trade stocks, options, and ETFs. Orders entered can be accessed from any computer using Active Trader Pro or ActiveTraderPro.com. Select the **shift + click** or **ctrl + click** keys to highlight orders on the ticket; then select the Preview Orders button to queue multiple orders trades at once. You can also right-click to preview, delete, or duplicate multiple orders.

MULTI-TRADE									
Account	Symbol	Trade Description	TIF	Value	Action	Last	Chg	Bid	
Primary Brokerage	SPY	[Action] 100 Limit at \$165.00	Day	16,500.00	PREVIEW	179.4411	0.4111	179.44	
Primary Brokerage	BAC	Buy 100 Limit at \$14.00	Day	1,400.00	PREVIEW	15.235	0.035	15.23	
Primary Brokerage	MSFT	Buy 100 at Market	Day	3,729.00	PREVIEW	37.29	0.55	37.29	
Primary Brokerage	NOK	Buy to Cover 100 at Market	Day	793.00	PREVIEW		1.3	7.92	
Primary Brokerage	KO	Sell 200 Trailing Stop Loss Trail of 1% Based On Last	Day	7,992.567	PREVIEW		55	40.36	

Preview Orders
Duplicate Orders
Delete Orders
Float Window
Export
Settings
Help

Screenshot is for illustrative purposes only.

## DIRECTED TRADE TICKET

The Directed Trade ticket combines a single trade ticket, depth of book quote display, and time and sales data, providing better insight into the current market for a security and more in-depth information as to where orders are accumulating across the various exchanges and electronic communication networks (ECNs). Use Directed Trading to send your orders to a variety of destinations, or to use advanced algorithms.

If you have questions, a Fidelity Representative can help. Call 800.544.6666.

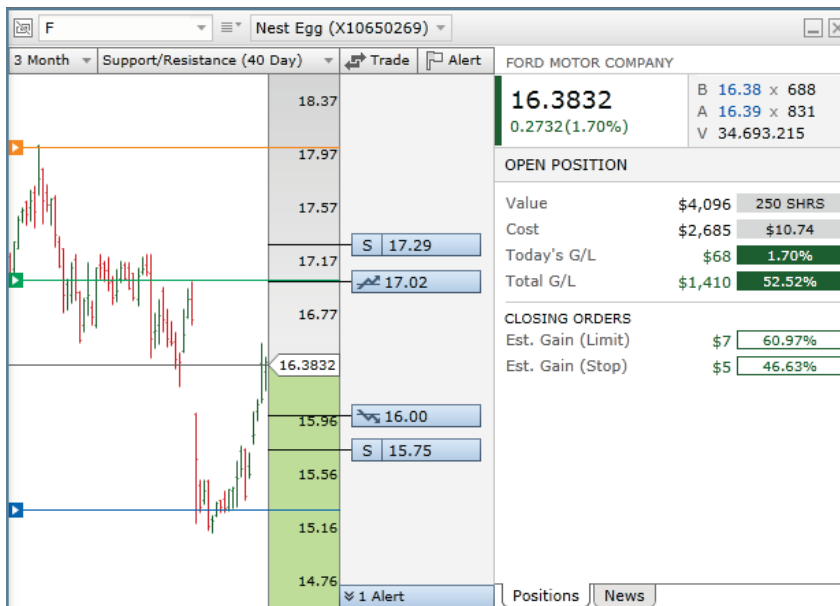


# TRADING

## TRADE ARMOR™

Trade Armor offers an innovative visual approach to trading and risk management with key information needed to make informed trading decisions, including position level unrealized and year-to-date realized gain/loss information, charts with support and resistance levels, quotes and the latest news headlines.

With Trade Armor you can quickly and easily create trades, while your estimated gain or loss is dynamically updated based on the order price you select. Replacing an order is as simple as dragging the open order price indicator to your new desired price. You can place a variety of orders, such as limits, stops, stop limits, trailing stops, and brackets. If you use alerts, creating and managing is also as easy as dragging and dropping the alert to a price point on the chart.



Screenshot is for illustrative purposes only.

If you have questions, a Fidelity Representative can help. Call 800.544.6666.

# TRADING

## CONDITIONAL TRADES

Use the conditional trade ticket to set order triggers for stocks and options based on the price movement of stocks, indices, or options contracts. Conditional trades are now integrated in Active TraderPro. Choose from Contingent, One Cancels the Other (OCO), One Triggers the Other (OTO) and One Triggers an OCO (OTOCO)

CONDITIONAL TRADE
[ ] [X]

Primary Brokerage (X05173525) ▾
Trade Type **One Triggers an OCO (OTOCO)** ▾

Margin Buying Power \$19,919,454.58
Non-Margin Buying Power \$9,922,673.85

Order A: If order A executes orders B and C will be placed	Order B: If order B executes cancel order C	Order C: If order C executes cancel order B
Symbol <input type="text" value="QQQ"/>	Symbol <input type="text" value="QQQ"/>	Symbol <input type="text" value="QQQ"/>
Action <input type="text" value="Buy"/>	Action <input type="text" value="Sell"/>	Action <input type="text" value="Sell"/>
Quantity <input type="text" value="1,000"/>	Quantity <input type="text" value="1,000"/>	Quantity <input type="text" value="1,000"/>
Order Type <input type="text" value="Limit"/>	Order Type <input type="text" value="Limit"/>	Order Type <input type="text" value="Stop"/>
Limit <input type="text" value="85.00"/>	Limit <input type="text" value="93.00"/>	Stop <input type="text" value="80.00"/>
TIF <input type="text" value="Day"/>	TIF <input type="text" value="Good 'til Canceled"/>	TIF <input type="text" value="Good 'til Canceled"/>
Conditions <input type="text" value="None"/> Type <input type="text" value="Margin"/>	Conditions <input type="text" value="None"/> Type <input type="text" value="Margin"/>	Conditions <input type="text" value="None"/> Type <input type="text" value="Margin"/>

Preview Clear All

POWERSHARES QQQ TRUST SERIES 1 <b>87.665</b> ↓ 1.655(1.92%) B <b>87.65</b> x 743 A <b>87.68</b> x 533 V 33.771.862	POWERSHARES QQQ TRUST SERIES 1 <b>87.665</b> ↓ 1.655(1.92%) B <b>87.65</b> x 743 A <b>87.68</b> x 533 V 33.771.862	POWERSHARES QQQ TRUST SERIES 1 <b>87.665</b> ↓ 1.655(1.92%) B <b>87.65</b> x 743 A <b>87.68</b> x 533 V 33.771.862
---	---	---

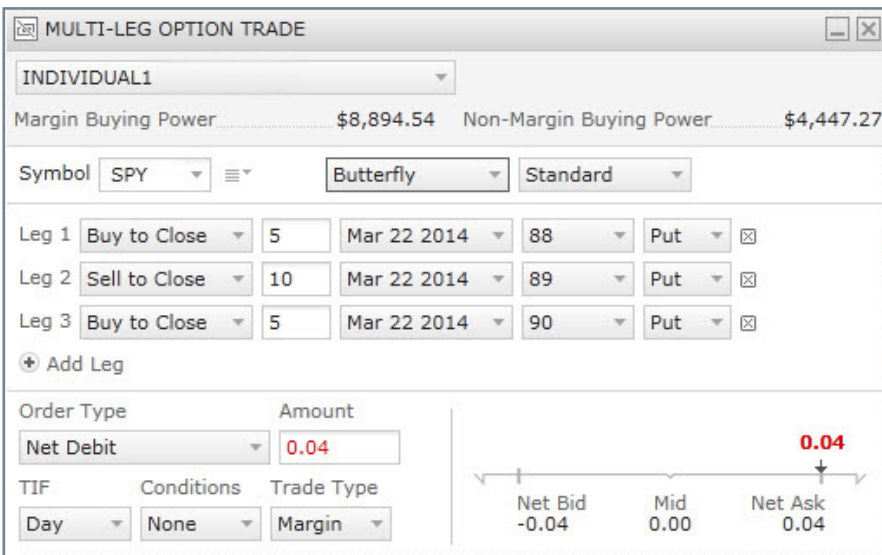
Screenshot is for illustrative purposes only.

If you have questions, a Fidelity Representative can help. Call 800.544.6666.

# TRADING

## MULTI-LEG OPTION TICKET

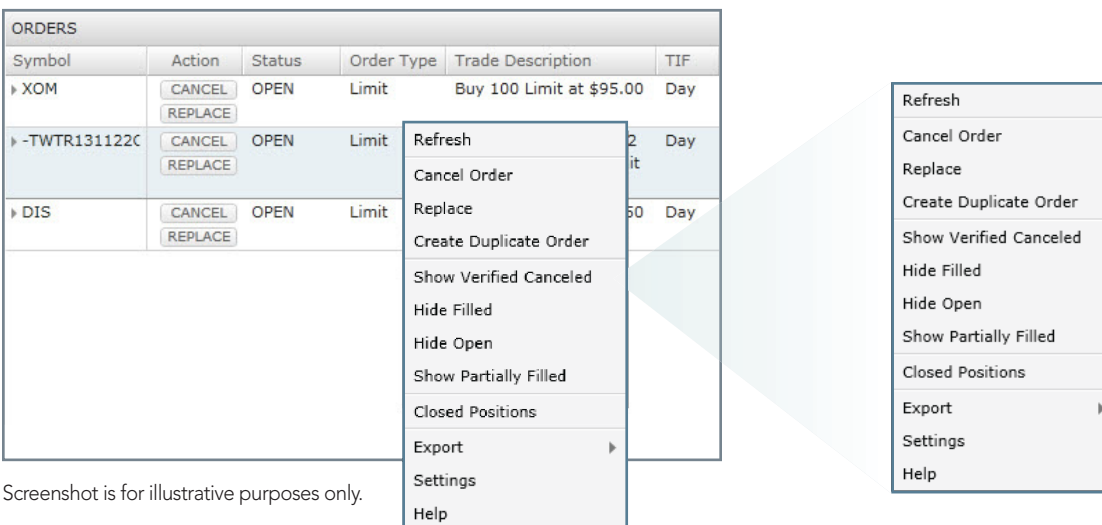
The Multi-Leg Option Trade ticket is an advanced trading tool that allows you to place two or more option orders for simultaneous execution on a net basis. The tool includes predefined strategy tickets to help quickly populate multi-leg option orders, as well as integrated streaming quotes and at-expiration profit, loss, and breakeven information.



Screenshot is for illustrative purposes only.

## ORDERS

Use the **Orders** tool to view order information for your accounts or, if possible, cancel or replace an existing order. To view details for executed trades, click the arrow to the left of the symbol. To create a duplicate order or hide a verified canceled order, use the right-click menu. To view orders on one line versus two, or set additional display filters, go to Order Settings.



Screenshot is for illustrative purposes only.

If you have questions, a Fidelity Representative can help. Call 800.544.6666.

# TRADING

## STREAMLINED INTERACTIONS

Click on the **Bid** or **Ask** price anywhere within the platform to automatically fill in a trade ticket.

Favorites							Manage
Symbol	Last	Chg	% Chg	Bid	Ask	Volume	
AAPL	533.40	9.66	1.84	534.60	534.79	14,297,937	
VOO	165.49	-0.08	-0.05	165.29	165.77	773,267	
IWM	112.82	0.83	0.74	112.72	112.89	30,761,096	
AMZN	381.37	4.73	1.26	381.46	381.67	2,729,391	
GOOG	1,058.41	12.48	1.19	1,059.1	1,059.15	2,287,082	
LG	46.50	-0.11	-0.24	40.00	47.79	163,068	
JPM	57.17	-0.48	-0.83	57.12	57.21	16,265,017	

Screenshot is for illustrative purposes only.

AMZN

AMAZON COM

**381.37**  
4.73(1.26%)

B 381.46 x 5  
A 381.67 x 3  
V 2,729,391

Open 377.61  
Day Range 374.8175 - 382.50  
Close 381.37 (11/26/2013)  
52 Wk Hi 382.50 (11/26/2013)  
52 Wk Lo 241.504 (11/28/2012)

Screenshot is for illustrative purposes only.

TRADE

Primary Brokerage

Margin Buying Power \$19,920,477.68  
Non-Margin Buying Power \$9,920,644.31

Symbol AMZN

Action Buy

Quantity

Order Type Limit

Limit 365.59

TIF Day

Conditions None

Preview Clear All

---

AMAZON COM

**365.4812** ↑  
0.5412(0.15%)

B 365.35 x 2  
A 365.50 x 1  
V 777,513

Screenshot is for illustrative purposes only.

If you have questions, a Fidelity Representative can help. Call 800.544.6666.

# CHARTS

Use Charts to see the price and volume of a selected security over a specified period of time, ranging from one day to 30 years.



Screenshot is for illustrative purposes only.

## TAB CHARTS

Use the tabs along the top of the chart to create up to five different views within a single chart window for a symbol.

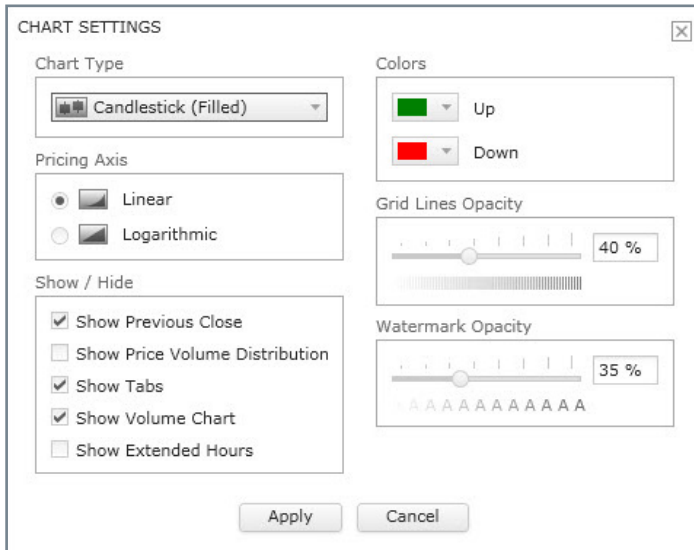
- To rename a tab, double-click the tab name and enter a new name.
- To insert a new tab, click the **+** symbol to the right of the last tab.
- To delete a tab, select the tab you want to delete and click the **X** icon.
- To reorder the tabs, drag and drop to the desired order.

## ZOOM

To zoom in on a particular time range, click the **Zoom In** icon. Place your cursor at the start of the time range, then click and drag your cursor to the end of the range.

If you have questions, a Fidelity Representative can help. Call 800.544.6666.

# CHARTS



Screenshot is for illustrative purposes only.

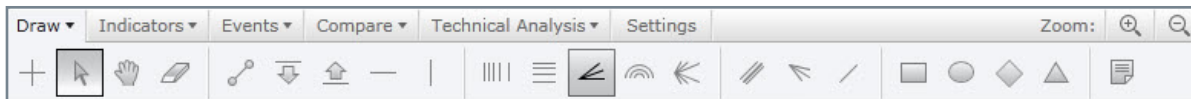
## CHART SETTINGS

Select **Settings** from the Chart main navigation to change chart type (candlestick, line, etc.). Decide what you want to show or hide on the chart (e.g., add volume distribution, show extended hours, etc.). Adjust the grid lines and watermark opacity, choose a linear or logarithmic price scale for your Y axis, and adjust the price movement colors.

## DRAWING TOOLS

Select the Draw menu to add notes or draw trend, support, or resistance lines, Fibonacci retracements, regression channels, and more. Hover over the icon to see the tool name.

To edit or remove a drawing tool or note, place your mouse over the object and click when highlighted. Edit the tool and click **Apply Changes**, or click **Remove** to delete. Use the **Zoom** tool to make text notes easier to access and edit.

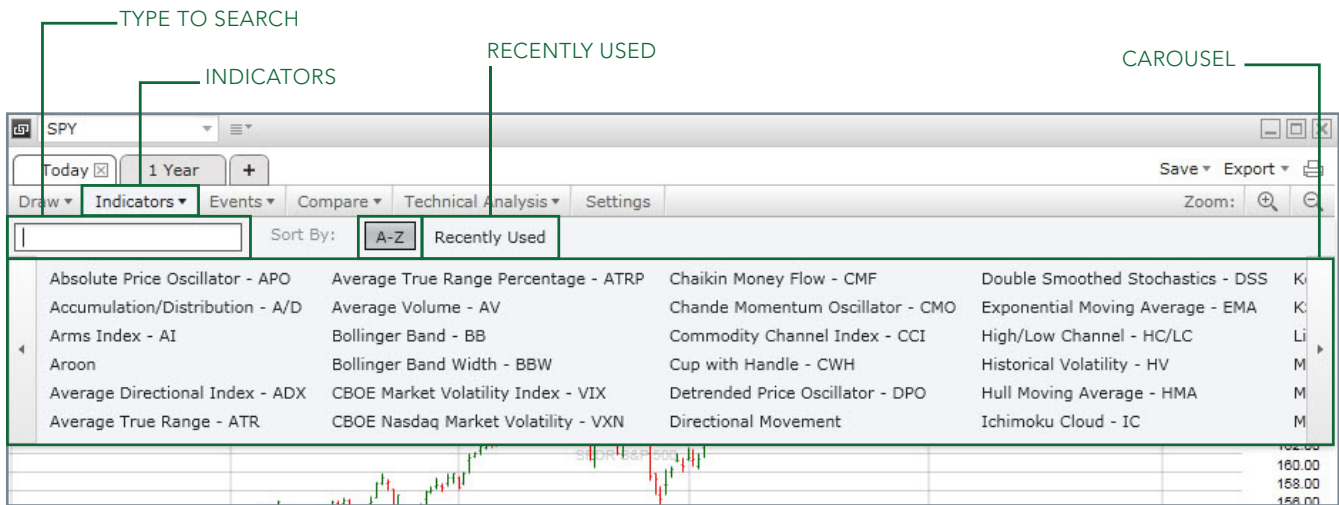


Screenshot is for illustrative purposes only.

# CHARTS

## SELECTING INDICATORS

There are three ways to select an indicator: **Type to search**—enter the first letters or abbreviation of the indicator you’re looking for in the **Type to search** box. **Recently used**—click on the menu and select the indicator you want. **Carousel**—scroll through your choices and click the indicator you want.



Screenshot is for illustrative purposes only.

To modify or delete an indicator from a chart, click the Indicator box and select **Modify** or **Delete**.



Screenshot is for illustrative purposes only.

If you have questions, a Fidelity Representative can help. Call 800.544.6666.

# CHARTS

## TECHNICAL ANALYSIS

The Technical Analysis tab uses Recognia® Chart Recognition to display both historical and currently forming technical events. Select **Patterns and Events** and choose patterns/events to display based on the results in the Technical Analysis pane.

**PATTERNS AND EVENTS** ✕

You can customize your chart to display patterns and indicator events. First select a Trading Horizon and then select the technical events you would like to see. Click Apply and a technical analysis pane that includes your selections will be added to the chart. Please note: Patterns and events are not available for intraday charts.

Select Trading Horizon

Short-Term (2 to 6 wks)    Intermediate-Term (6 wks to 9 mos)    Long-Term (more than 9 mos)

Active Events   Anticipated Events

Select All   Adding active events can help complement your investment research by showing patterns in a stock's price.

<p><b>Classic Patterns</b></p> <p>All</p> <p><input type="checkbox"/> Select All</p> <ul style="list-style-type: none"> <li><input type="checkbox"/> Ascending Continuation Triangle-ACT</li> <li><input type="checkbox"/> Bottom Triangle-BT</li> <li><input type="checkbox"/> Continuation of a Diamond (Bearish)-CD</li> <li><input type="checkbox"/> Continuation of a Diamond (Bullish)-CD</li> </ul>	<p><b>Candlestick/Multi-Bar</b></p> <p>All</p> <p><input type="checkbox"/> Select All</p> <ul style="list-style-type: none"> <li><input type="checkbox"/> Engulfing Line (Bearish)-EL</li> <li><input type="checkbox"/> Engulfing Line (Bullish)-EL</li> <li><input type="checkbox"/> Exhaustion Bar (Bearish)-EB</li> <li><input type="checkbox"/> Exhaustion Bar (Bullish)-EB</li> </ul>	<p><b>Oscillators</b></p> <p>All</p> <p><input type="checkbox"/> Select All</p> <ul style="list-style-type: none"> <li><input type="checkbox"/> Bollinger Bands-BB</li> <li><input type="checkbox"/> Commodity Channel Index-CCI</li> <li><input type="checkbox"/> Fast Stochastic-SF</li> <li><input type="checkbox"/> Intermediate Term KST-KST</li> <li><input type="checkbox"/> Long Term KST-KST</li> </ul>	<p><b>Indicators</b></p> <p>All</p> <p><input type="checkbox"/> Select All</p> <ul style="list-style-type: none"> <li><input type="checkbox"/> Double Moving Average Crossover-DMAC</li> <li><input type="checkbox"/> Price Crosses Moving Average-MAC</li> <li><input type="checkbox"/> Triple Moving Average Crossover-TMAC</li> </ul>
--	--	--	--

Apply   Cancel

Screenshot is for illustrative purposes only.



Screenshot is for illustrative purposes only.

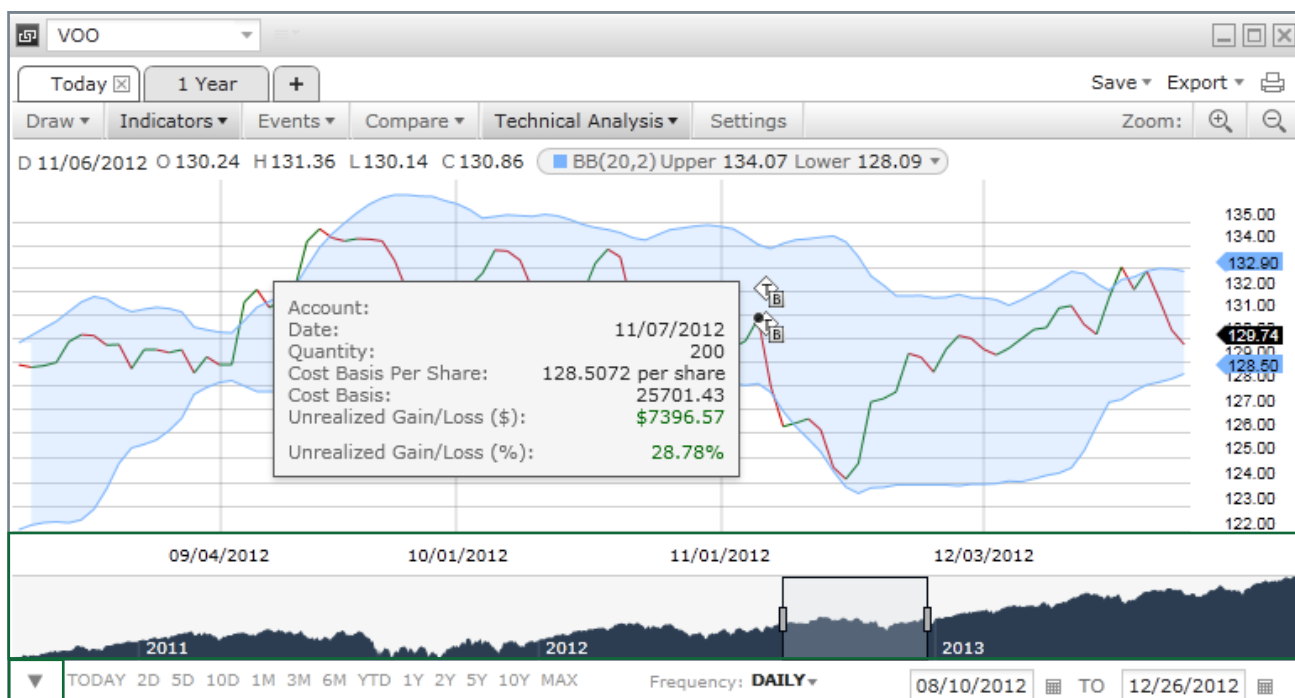
If you have questions, a Fidelity Representative can help. Call 800.544.6666.



# CHARTS

## HISTORICAL TRADES

Use the historical time slider to drill down to a particular time frame on your chart. Select the up arrow to open the time slider. You can also use the calendar to type in a specific time frame. To view trades, select **Events/Tax Lots**. A diamond will appear in white for every lot position that is opened at the appropriate date and price. When a position is closed for a gain, a similar diamond will appear, but will be colored green. When a position is closed for a loss, the diamond will again appear, but will be colored red.



Screenshot is for illustrative purposes only.

**SAVE CHART** ✕

Name Your Chart

Make this my default chart

Save Chart Settings

Save Indicators

Save Events

Save Timeframe & Frequency

Screenshot is for illustrative purposes only.

## SAVING CHARTS

Click **Save/Save Current View**. Name the chart and select whether you want settings, indicators, and events saved with the template. You can also make the chart your default from this view. Currently, you cannot copy the settings from one chart tab to another.

If you have questions, a Fidelity Representative can help. Call 800.544.6666.

# HISTORY

Fidelity lets you search a maximum of two-and-a-half years of account history. In 2014, the available history will increase to nearly five years. For now, there are a few work-arounds you can use to access older historical transactions:

## TRADE HISTORY

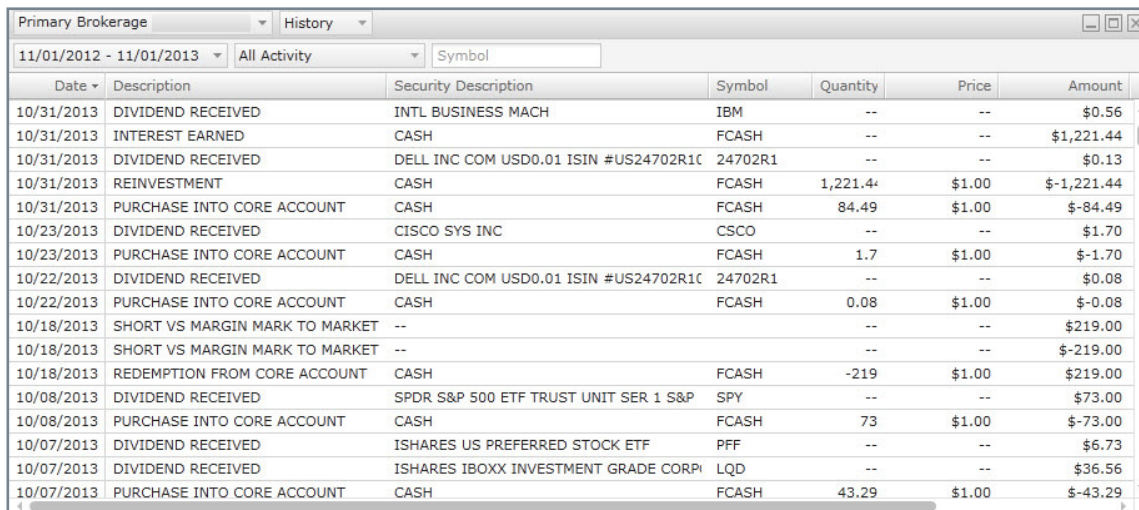
Select **Account/Closed Positions** from the main navigation toolbar to search up to 10 years of trade history.

## EXPORT HISTORY FROM ATP 9.6

Log in and export your history to a program like Microsoft® Excel.

Your history is downloaded to your computer each time you log on to ATP 9.6. We recommend that you log on to ATP 9.6 in February 2014, just prior to the program retirement date, to download the most recent transactions, then export them to Microsoft Excel or another program.

After ATP 9.6 is retired, you will still be able to access locally stored history you downloaded by launching ATP Next Generation in offline mode.



Date	Description	Security Description	Symbol	Quantity	Price	Amount
10/31/2013	DIVIDEND RECEIVED	INTL BUSINESS MACH	IBM	--	--	\$0.56
10/31/2013	INTEREST EARNED	CASH	FCASH	--	--	\$1,221.44
10/31/2013	DIVIDEND RECEIVED	DELL INC COM USD0.01 ISIN #US24702R1C	24702R1	--	--	\$0.13
10/31/2013	REINVESTMENT	CASH	FCASH	1,221.44	\$1.00	\$-1,221.44
10/31/2013	PURCHASE INTO CORE ACCOUNT	CASH	FCASH	84.49	\$1.00	\$-84.49
10/23/2013	DIVIDEND RECEIVED	CISCO SYS INC	CSCO	--	--	\$1.70
10/23/2013	PURCHASE INTO CORE ACCOUNT	CASH	FCASH	1.7	\$1.00	\$-1.70
10/22/2013	DIVIDEND RECEIVED	DELL INC COM USD0.01 ISIN #US24702R1C	24702R1	--	--	\$0.08
10/22/2013	PURCHASE INTO CORE ACCOUNT	CASH	FCASH	0.08	\$1.00	\$-0.08
10/18/2013	SHORT VS MARGIN MARK TO MARKET	--	--	--	--	\$219.00
10/18/2013	SHORT VS MARGIN MARK TO MARKET	--	--	--	--	\$-219.00
10/18/2013	REDEMPTION FROM CORE ACCOUNT	CASH	FCASH	-219	\$1.00	\$219.00
10/08/2013	DIVIDEND RECEIVED	SPDR S&P 500 ETF TRUST UNIT SER 1 S&P	SPY	--	--	\$73.00
10/08/2013	PURCHASE INTO CORE ACCOUNT	CASH	FCASH	73	\$1.00	\$-73.00
10/07/2013	DIVIDEND RECEIVED	ISHARES US PREFERRED STOCK ETF	PFF	--	--	\$6.73
10/07/2013	DIVIDEND RECEIVED	ISHARES IBOX INVESTMENT GRADE CORP	LQD	--	--	\$36.56
10/07/2013	PURCHASE INTO CORE ACCOUNT	CASH	FCASH	43.29	\$1.00	\$-43.29

Screenshot is for illustrative purposes only.

If you have questions, a Fidelity Representative can help. Call 800.544.6666.

# MARKET DATA

The screenshot shows a trading interface window titled "DIRECTED TRADE STOCKS/ETFS". It includes fields for "Primary Investment Acct", "Margin Buying Power" (\$19,924,204.68), and "Non-Margin Buying Power" (\$9,925,460.98). There are dropdown menus for "FB", "Action", "Order", "Route", "TIF", and "Cond.". Below these are buttons for "500 @ BID", "100 @ BID", "BUY AT ASK", "Preview", and "Clear All".

The main data area shows a price of 49.05 with a change of -0.06 (0.12%). It also displays "B 49.05 x 9" and "A 49.06 x 29" along with a volume of "V 38,547,301".

Market	Shares	Bid	Ask	Shares	Market	Price	Shares	Time
NSDQ	900	49.05	49.06	2,800	NSDQ	49.05	100	15:43:02
ARCA	500	49.05	49.06	2,800	ARCA	49.0501	139	15:43:01
EDGX	100	49.05	49.06	200	BOSX	49.0599	100	15:43:01
PHLX	100	49.05	49.06	300	EDGA	49.05	100	15:43:00
BATS	200	49.05	49.06	2,100	EDGX	49.05	100	15:43:00
ARCA	1,400	49.04	49.06	1,700	BATS	49.05	200	15:42:59
NSDQ	2,019	49.04	49.06	100	TMBR	49.05	100	15:42:59
UBSS	500	49.04	49.06	300	PHLX	49.05	200	15:42:59
BOSX	200	49.04	49.06	400	BATY	49.05	100	15:42:59
EDGA	200	49.04	49.07	2,450	NSDQ	49.05	100	15:42:59
BATY	200	49.04	49.07	1,500	ARCA	49.05	100	15:42:59
NSDQ	2,829	49.03	49.07	100	UBSS	49.05	100	15:42:59
ARCA	1,600	49.03	49.07	100	TMBR	49.05	100	15:42:59
UBSS	910	49.03	49.08	3,214	NSDQ	49.059	100	15:42:59

Screenshot is for illustrative purposes only.

MARKET DEPTH

STREAMING TIME AND SALES

## MARKET DEPTH

Use the **Directed Trading** tool to view market depth and streaming intraday time and sales information, located at **Trades & Orders/Directed Trade & Extended Hours**.

For the **Depth of Book** view, we are now using NASDAQ TotalView and the NYSE ArcaBook. Together, they provide an even greater view of market depth than the NASDAQ Level 2 product by displaying additional order book liquidity versus just the best bid and ask for various market centers.

## TIME AND SALES

View real-time intraday and up to 30 days of historical time and sales information under **the Quotes and Watch List/Time & Sales** menu.

If you have questions, a Fidelity Representative can help. Call 800.544.6666.

# MARKET DATA

## OPTION CHAIN

Use the **Quotes & Watch List/Option Chain/Expiration** bar along the top of the chain to show or hide various expirations. You can also expand and collapse expirations by clicking the arrow to the left of the Expiration header in the grid.

STRATEGY, STRIKE, VOLUME, AND OPEN INTEREST FILTERS

SHOW/HIDE HISTOGRAMS AND ADJUSTED OPTIONS

SHOW/HIDE EXPIRATIONS

SHOW/HIDE MONTHS

AAPL													
519.55 0.921 (0.18%)		V 7,443,617		HV30 17.55 IV30 20.32		C/P Ratio: BULLISH		BEARISH					
Calls & Puts		Standard		10 Strikes		All Volume & Open Int		Adj					
Jan 18 2014		Feb 22		Mar 22		Apr 19		Jul 19		Jan 17 2015		Jan 15 2016	
Last	Chg	Bid	Ask	Volume	Open Int	Strike	Last	Chg	Bid	Ask	Volume	Open Int	
CALLS Jan 18 PUTS													
33.72	-2.95	33.20	33.60	36	5,690	495	8.35	-0.72	8.30	8.45	188	3,333	
29.85	-0.15	29.80	30.10	667	57,115	500	9.85	-1.05	9.80	9.95	383	29,468	
26.95	-0.24	26.60	26.95	285	8,431	505	11.65	-0.90	11.60	11.80	175	2,338	
23.58	-0.27	23.60	23.90	956	11,059	510	13.60	-1.20	13.55	13.80	358	4,598	
20.80	-0.45	20.75	21.10	681	5,305	515	15.75	-1.00	15.75	16.00	430	3,053	
18.50	-0.35	18.30	18.50	1,082	9,632	520	18.10	-1.50	18.15	18.45	687	5,569	
15.98	-0.37	15.85	16.15	1,013	14,184	525	21.00	-0.92	20.80	21.10	132	4,533	
14.00	-0.40	13.75	14.00	879	11,223	530	23.86	-1.44	23.70	24.00	73	4,278	
12.07	-0.33	11.85	12.05	392	5,338	535	26.97	-1.28	26.75	27.10	50	1,793	
10.25	-0.45	10.15	10.35	1,755	8,070	540	30.10	-1.71	30.10	30.40	55	2,519	
CALLS Feb 22 PUTS													
40.28	-0.22	39.95	40.35	25	172	495	16.60	-1.10	16.55	16.80	24	534	
37.15	0.16	36.90	37.25	87	1,246	500	18.65	-0.25	18.50	18.80	32	2,197	
35.30	1.00	33.95	34.30	14	243	505	20.49	-1.06	20.65	20.90	20	1,151	
33.10	1.65	31.15	31.50	21	744	510	22.85	-1.45	22.95	23.20	119	1,499	
28.65	-0.25	28.50	28.85	40	810	515	26.00	-0.70	25.40	25.70	34	1,318	
26.10	-0.50	26.05	26.40	188	2,803	520	28.15	-1.36	27.85	28.30	245	2,344	
24.00	0.00	23.75	24.05	189	2,969	525	30.90	-1.30	30.75	31.00	151	1,398	
21.60	-0.34	21.55	21.85	1,167	3,166	530	34.40	-0.35	33.60	33.90	203	1,851	
19.75	-0.40	19.55	19.80	253	1,114	535	36.65	-0.65	36.65	36.95	127	366	
18.10	-0.10	17.70	17.95	78	1,683	540	38.75	0.85	39.85	40.15	63	254	

Screenshot is for illustrative purposes only.

CLICK BID/ASK TO QUICKLY POPULATE TRADE

If you have questions, a Fidelity Representative can help. Call 800.544.6666.