



ACUSON Sequoia C512 Echocardiography System

Transducers

www.siemens.com/medical

SIEMENS
medical



10V4c Transducer

Frequency Bandwidth:	10 – 4 MHz
Compatible With:	ACUSON Sequoia™ 512 ultrasound system
Applications:	Neonatal and pediatric echocardiography

Features:

- MICROSON™ high resolution transducer family
- Vector™ wide-view imaging format phased array
- User-selectable Wideband MultiHertz™ multiple frequency imaging



8V3c Transducer

Frequency Bandwidth:	8 – 3 MHz
Compatible With:	ACUSON Sequoia 512 ultrasound system
Applications:	Pediatric and fetal echocardiography

Features:

- Hanafy Lens transducer technology
- Vector™ wide-view imaging format phased array
- User-selectable Wideband MultiHertz™ multiple frequency imaging



7V3c Transducer

Frequency Bandwidth:	7 – 3 MHz
Compatible With:	ACUSON Sequoia™ C256 echocardiography system ACUSON Sequoia 512 ultrasound system
Applications:	Transthoracic adult and pediatric echocardiography, coronary artery imaging

Features:

- User-selectable Wideband MultiHertz imaging
- Vector™ wide-view imaging format phased array



4V1c Transducer

Frequency Bandwidth:	4 – 1 MHz
Compatible With:	ACUSON Sequoia 512 ultrasound system
Applications:	Transthoracic adult and pediatric echocardiography, stress echo, coronary artery imaging, contrast agent studies, transcranial with 12.0 and vascular option

- Features:**
- Hanafy Lens transducer technology
 - Vector™ wide view phased array
 - User-selectable Wideband MultiHertz imaging
 - RF shielding



3V2c-S Transducer

Frequency Bandwidth:	4 – 2 MHz
Compatible With:	ACUSON Sequoia C256 echocardiography system ACUSON Sequoia 512 ultrasound system
Applications:	Transthoracic adult echocardiography, stress echo, contrast agent studies, transcranial with vascular option

- Features:**
- Vector™ wide-view imaging format phased array
 - User-selectable Wideband MultiHertz imaging



4V1 Transducer

Frequency Bandwidth:	4 – 1 MHz
Compatible With:	ACUSON Aspen™ ultrasound system ACUSON Sequoia 512 ultrasound system
Applications:	General and deep abdominal vascular

- Features:**
- Hanafy Lens transducer technology
 - Vector™ wide-view imaging format phased array
 - User-selectable Wideband MultiHertz imaging
 - Excellent penetration



8C4 Transducer

Frequency Bandwidth:	8 – 4 MHz
Compatible With:	ACUSON Sequoia 512 ultrasound system
Applications:	Abdominal vascular, fetal heart

Features:

- Curved vector imaging format
- Wide view phased array
- User-selectable Wideband MultiHertz imaging
- Color M-mode for fetal echo studies



6C2 Transducer

Frequency Bandwidth:	6 – 2 MHz
Compatible With:	ACUSON Aspen ultrasound system ACUSON Sequoia 512 ultrasound system
Applications:	Abdominal vascular, fetal heart

Features:

- Curved vector imaging format
- Hanafy Lens transducer technology
- Wide view phased array
- User-selectable Wideband MultiHertz imaging



4C1 Transducer

Frequency Bandwidth:	4 – 1 MHz
Compatible With:	ACUSON Sequoia 512 ultrasound system ACUSON Aspen ultrasound system
Applications:	Fetal heart, abdominal vascular, typical and technically difficult patients

Features:

- Curved vector imaging format
- Hanafy Lens transducer technology
- Wide view phased array
- User-selectable Wideband MultiHertz imaging
- Excellent penetration



17L5 HD Transducer

Frequency Bandwidth:	17 – 5 MHz
Compatible With:	ACUSON Sequoia 512 ultrasound system
Applications:	Superficial vascular, contrast agent imaging

Features:

- Hanafy Lens transducer technology
- Patented ergonomic design with Elastogrip™ soft elastomeric coating
- Linear and Vector wide-view imaging format
- User-selectable Wideband MultiHertz imaging

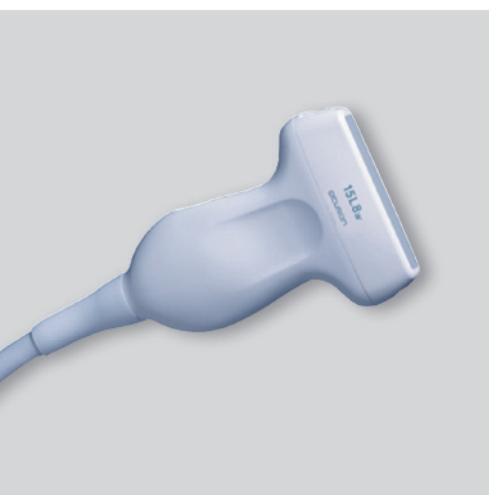


15L8 Transducer

Frequency Bandwidth:	15 – 8 MHz
Compatible With:	ACUSON Sequoia C256 echocardiography system ACUSON Sequoia 512 ultrasound system
Applications:	Superficial vascular, transgenic mouse heart scanning

Features:

- Hanafy Lens transducer technology
- User-selectable Wideband MultiHertz imaging
- Extra long cable



15L8w Transducer

Frequency Bandwidth:	15 – 8 MHz
Compatible With:	ACUSON Sequoia 512 ultrasound system
Applications:	Superficial vascular

Features:

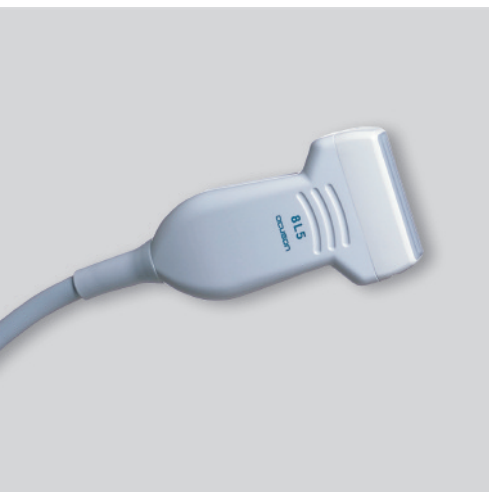
- MICROSON™ high resolution transducer family
- Hanafy Lens transducer technology
- User-selectable Wideband MultiHertz imaging
- Extra long cable



9L4 Transducer

Frequency Bandwidth:	9 – 4 MHz
Compatible With:	ACUSON Sequoia 512 ultrasound system
Applications:	Cerebrovascular, peripheral vascular, superficial vascular, contrast agent imaging

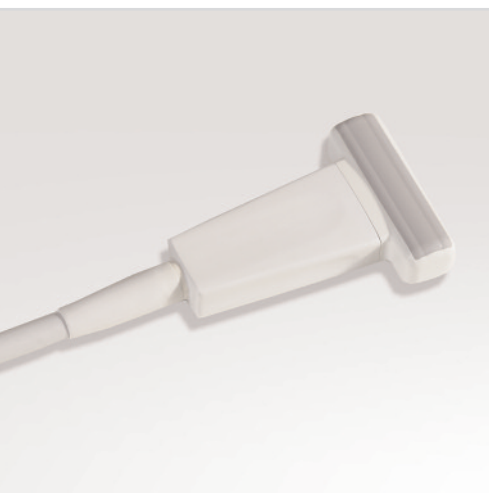
- Features:**
- Multi-D™ array transducer technology
 - Linear and Vector wide-view imaging format
 - Triplex imaging
 - User-selectable Wideband MultiHertz imaging



8L5 Transducer

Frequency Bandwidth:	8 – 5 MHz
Compatible With:	ACUSON Sequoia 512 ultrasound system ACUSON Sequoia C256 echocardiography system
Applications:	Peripheral vascular extracranial vascular, medium depth arterial and venus studies

- Features:**
- User-selectable Wideband MultiHertz imaging



8L5T Transducer

Frequency Bandwidth:	8 – 5 MHz
Compatible With:	ACUSON Sequoia C256 echocardiography system ACUSON Sequoia 512 ultrasound system
Applications:	Intraoperative, vasculature, epiaortic and epicardial imaging

- Features:**
- Side-fire "T" shape linear array design
 - Compatible with sterile transducer sleeves
 - Extra long cable
 - Extended MultiHertz multiple frequency imaging



6L3 Transducer

Frequency Bandwidth:	6 – 3 MHz
Compatible With:	ACUSON Sequoia C256 echocardiography system ACUSON Sequoia 512 ultrasound system
Applications:	Peripheral vascular, extracranial vascular, medium and deep arterial and venous studies

Features:

- User-selectable Wideband MultiHertz imaging

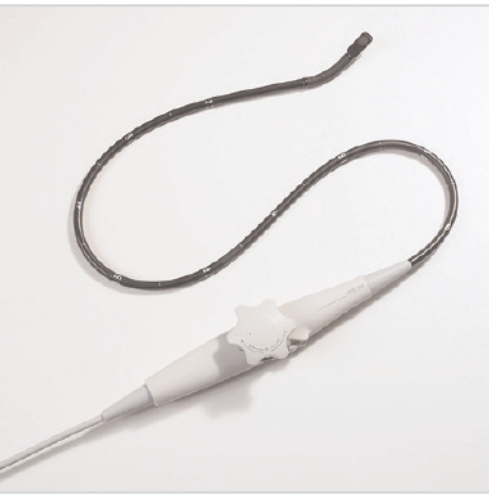


V7M Transducer

Frequency Bandwidth:	8 – 3 MHz
Compatible With:	ACUSON Sequoia C256 echocardiography system ACUSON Sequoia 512 ultrasound system
Applications:	Pediatric and adult transesophageal mini- multiplane echocardiography

Features:

- Endoscope dimensions: diameter = 7.0, length = 70 cm, patient weight = 3.5 kgs and above
- Small tip size for increased patient comfort: width = 10.9 mm, thickness = 8.0 mm, circumference = 22 mm
- Ergonomic design featuring one-hand control
- Manual rotation: 0° – 180°
- Vector™ wide-view imaging format phased array
- User-selectable Wideband MultiHertz imaging
- DTI Doppler Tissue Imaging



V5Ms Transducer

Frequency Bandwidth:	7 – 3 MHz
Compatible With:	ACUSON Sequoia C256 echocardiography system ACUSON CV70™ cardiovascular system ACUSON Cypress™ cardiovascular system ACUSON Aspen ultrasound system ACUSON 128XP/10C™ echocardiography system ACUSON Sequoia 512 ultrasound system
Applications:	Transesophageal multiplane echocardiography

Features:

- Endoscope diameter = 10.5, length = 110 cm
- Adult tip size: width = 14.5, height = 11.5
- Ergonomic design featuring one-hand control with variable speed rotation – 90° per sec.
- RF shielding
- Vector™ wide-view imaging format phased array
- User-selectable Wideband MultiHertz imaging
- DTI Doppler Tissue Imaging
- Syngo® fourSight™ TEE view
- Syngo® Mitral Valve Assessment



AcuNav 10F*

Frequency Bandwidth:	2.0 – 10.0 MHz
Compatible With:	ACUSON Sequoia C256 echocardiography system ACUSON Cypress cardiovascular system ACUSON Aspen ultrasound system ACUSON Sequoia 512 ultrasound system
Applications:	Adult intracardiac echocardiography

Features:

- 10 french catheter (3.3 mm diameter)
- 90 cm insertable length
- Sterile, single-use advanced miniaturization AcuNav™ ultrasound catheter family
- Reusable SwiftLink™ catheter connector
- Four-way steering in two planes: 160° in each direction
- Longitudinal side-fire imaging
- Vector™ wide-view imaging format phased array
- DTI Doppler Tissue Imaging

* For purchase or inquiries, contact Biosense Webster: USA (909-839-8500 and 800-729-9010), Belgium (32-2-352-1411), Asia Pacific (65) 6827-6100



AcuNav 8F*

Frequency Bandwidth: 2.0 – 10.0 MHz

Compatible With: ACUSON Sequoia C256 echocardiography system
ACUSON CV70 cardiovascular system
ACUSON Cypress cardiovascular system
ACUSON Sequoia 512 ultrasound system

Applications: Adult intracardiac echocardiography

Features:

- 8 french catheter (2.7 mm diameter)
- 110 cm insertable length
- Sterile, single-use advanced miniaturization AcuNav ultrasound catheter family
- Reusable SwiftLink catheter connector
- Four-way steering in two planes: 160° in each direction
- Logitudinal side-fire imaging
- Vector™ wide-view imaging format phased array
- DTI Doppler Tissue Imaging

* For purchase or inquiries, contact Biosense Webster: USA (909-839-8500 and 800-729-9010), Belgium (32-2-352-1411), Asia Pacific (65) 6827-6100



Aux CW

Frequency Bandwidth: 2.0 MHz

Compatible With: ACUSON Sequoia C256 echocardiography platform
ACUSON Aspen echocardiography platform
ACUSON Aspen ultrasound platform
ACUSON Sequoia 512 ultrasound system

Applications: Non-imaging, transthoracic adult and pediatric, continuous wave spectral Doppler echocardiography

Features:

- Continuous wave spectral Doppler mode
- Excellent intercostal, suprasternal and subcostal access
- Excellent penetration

128XP/10C, ACUSON, AcuNav, Aspen,
CV70, Cypress, DTI, Elastogrip, MICROSON
Multi-D, MultiHertz, Native, Sequoia,
SwiftLink and Vector are trademarks of
Siemens Medical Solutions USA, Inc.

Siemens Medical Solutions USA, Inc.
Ultrasound Division
1230 Shorebird Way
P.O. Box 7393
Mountain View, CA 94039-7393 USA

Headquarters

Siemens Medical Solutions USA
51 Valley Stream Parkway
Malvern, PA 19355-1406 USA
Telephone: +1-888-826-9702
www.usa.siemens.com/medical

Contacts

Europe: +49 9131 84-0
Asia Pacific: +65 6341 0990
Latin America: +1 786-845-0697

Siemens Medical Solutions USA, Inc.
Ultrasound Division
1230 Shorebird Way
P.O. Box 7393
Mountain View, CA 94039-7393 USA
Telephone: +1-888-826-9702

Siemens **Medical**
Solutions that help

© 10.2007, Siemens Medical Solutions USA, Inc.
DS 1007