

# PEDIATRIC EMERGENCY MEDICINE PRACTICE

AN EVIDENCE-BASED APPROACH TO PEDIATRIC EMERGENCY MEDICINE ▲ EB MEDICINE.NET

## Acute Appendicitis in Pediatric Patients: An Evidence-Based Review

### Abstract

Appendicitis is the most common condition in children requiring emergency abdominal surgery. Delayed or missed diagnosis in young children is common and is associated with increased rates of perforation. Although several scoring systems have been developed, there is still no consensus on clinical, laboratory, and imaging criteria for diagnosing appendicitis. This issue reviews key age-based historical and physical examination findings, as well as clinical scoring systems, that can help guide the workup of appendicitis in children. The existing literature is reviewed to provide guidance for the management of children with appendicitis, including recommendations for diagnostic studies, prophylactic antibiotics, pain medication, and surgical consultation.

September 2019  
Volume 16, Number 9

### Authors

#### Callie Becker, MD

Assistant Professor, Division of Emergency Medicine, Department of Pediatrics, University of Minnesota Masonic Children's Hospital, Minneapolis, MN

#### Anupam Kharbanda, MD, MS

Chief, Critical Care Services, Children's Hospital Minnesota, Minneapolis, MN

### Peer Reviewers

#### Ran D. Goldman, MD

Professor of Pediatrics, University of British Columbia, Head, Division of Clinical Pharmacology, Emergency Physician, Division of Emergency Medicine, BC Children's Hospital, Vancouver, BC, Canada

#### Kristy Williamson, MD

Attending Physician, Pediatric Emergency Medicine, Steven and Alexandra Cohen Children's Medical Center, New Hyde Park, NY

*Prior to beginning this activity, see "CME Information" on the back page.*

### Editors-in-Chief

#### Ilene Claudius, MD

Associate Professor; Director, Process & Quality Improvement Program, Harbor-UCLA Medical Center, Torrance, CA

#### Tim Horeczko, MD, MSCR, FACEP, FAAP

Associate Professor of Clinical Emergency Medicine, David Geffen School of Medicine, UCLA; Core Faculty and Senior Physician, Los Angeles County-Harbor-UCLA Medical Center, Torrance, CA

### Editorial Board

#### Jeffrey R. Avner, MD, FAAP

Chairman, Department of Pediatrics, Professor of Clinical Pediatrics, Maimonides Children's Hospital of Brooklyn, Brooklyn, NY

#### Steven Bin, MD

Associate Clinical Professor, UCSF School of Medicine; Medical Director, Pediatric Emergency Medicine, UCSF Benioff Children's Hospital, San Francisco, CA

#### Richard M. Cantor, MD, FAAP, FACEP

Professor of Emergency Medicine and Pediatrics; Section Chief, Pediatric Emergency Medicine; Medical Director, Upstate Poison Control Center, Golisano Children's Hospital, Syracuse, NY

#### Steven Choi, MD, FAAP

Chief Quality Officer and Associate Dean for Clinical Quality, Yale Medicine/Yale School of Medicine; Vice President, Chief Quality Officer, Yale New Haven Health System, New Haven, CT

#### Ari Cohen, MD, FAAP

Chief of Pediatric Emergency Medicine, Massachusetts General

Hospital; Instructor in Pediatrics, Harvard Medical School, Boston, MA

#### Jay D. Fisher, MD, FAAP, FACEP

Clinical Professor of Emergency Medicine and Pediatrics, University of Nevada, Las Vegas School of Medicine, Las Vegas, NV

#### Marianne Gausche-Hill, MD, FACEP, FAAP, FAEMS

Medical Director, Los Angeles County EMS Agency; Professor of Clinical Emergency Medicine and Pediatrics, David Geffen School of Medicine at UCLA; Clinical Faculty, Harbor-UCLA Medical Center, Department of Emergency Medicine, Los Angeles, CA

#### Michael J. Gerardi, MD, FAAP, FACEP, President

Associate Professor of Emergency Medicine, Icahn School of Medicine at Mount Sinai; Director, Pediatric Emergency Medicine, Goryeb Children's Hospital, Morristown, NJ

#### Sandip Godambe, MD, PhD

Chief Quality and Patient Safety Officer, Professor of Pediatrics, Attending Physician of Emergency Medicine, Children's Hospital of The King's Daughters Health System, Norfolk, VA

#### Ran D. Goldman, MD

Professor, Department of Pediatrics, University of British Columbia; Research Director, Pediatric Emergency Medicine, BC Children's Hospital, Vancouver, BC, Canada

#### Joseph Habboushe, MD, MBA

Assistant Professor of Emergency Medicine, NYU/Langone and Bellevue Medical Centers, New York, NY; CEO, MD Aware LLC

#### Alison S. Inaba, MD, FAAP

Pediatric Emergency Medicine

Specialist, Kapiolani Medical Center for Women & Children; Associate Professor of Pediatrics, University of Hawaii John A. Burns School of Medicine, Honolulu, HI

#### Madeline Matar Joseph, MD, FACEP, FAAP

Professor of Emergency Medicine and Pediatrics, Assistant Chair, Pediatric Emergency Medicine Quality Improvement, Pediatric Emergency Medicine Division, University of Florida College of Medicine-Jacksonville, Jacksonville, FL

#### Stephanie Kennebeck, MD

Associate Professor, University of Cincinnati Department of Pediatrics, Cincinnati, OH

#### Anupam Kharbanda, MD, MSc

Chief, Critical Care Services, Children's Hospital Minnesota, Minneapolis, MN

#### Tommy Y. Kim, MD, FAAP, FACEP

Associate Professor of Pediatric Emergency Medicine, University of California Riverside School of Medicine, Riverside Community Hospital, Department of Emergency Medicine, Riverside, CA

#### Melissa Langhan, MD, MHS

Associate Professor of Pediatrics and Emergency Medicine; Fellowship Director, Director of Education, Pediatric Emergency Medicine, Yale University School of Medicine, New Haven, CT

#### Robert Luten, MD

Professor, Pediatrics and Emergency Medicine, University of Florida, Jacksonville, FL

#### Garth Meckler, MD, MSHS

Associate Professor of Pediatrics, University of British Columbia;

Division Head, Pediatric Emergency Medicine, BC Children's Hospital, Vancouver, BC, Canada

#### Joshua Nagler, MD, MHPEd

Assistant Professor of Pediatrics and Emergency Medicine, Harvard Medical School; Associate Division Chief and Fellowship Director, Division of Emergency Medicine, Boston Children's Hospital, Boston, MA

#### James Naprawa, MD

Attending Physician, Emergency Department USCF Benioff Children's Hospital, Oakland, CA

#### Joshua Rocker, MD

Associate Chief and Medical Director, Assistant Professor of Pediatrics and Emergency Medicine, Cohen Children's Medical Center of New York, New Hyde Park, NY

#### Steven Rogers, MD

Associate Professor, University of Connecticut School of Medicine, Attending Emergency Medicine Physician, Connecticut Children's Medical Center, Hartford, CT

#### Christopher Strother, MD

Associate Professor, Emergency Medicine, Pediatrics, and Medical Education; Director, Pediatric Emergency Medicine; Director, Simulation; Icahn School of Medicine at Mount Sinai, New York, NY

#### Adam E. Vella, MD, FAAP

Director of Quality Assurance, Pediatric Emergency Medicine, New York-Presbyterian, Weill Cornell, New York, NY

#### David M. Walker, MD, FACEP, FAAP

Chief, Pediatric Emergency Medicine, Department of Pediatrics, Joseph M. Sanzari Children's Hospital, Hackensack University Medical Center, Hackensack, NJ

#### Vincent J. Wang, MD, MHA

Professor of Pediatrics and Emergency Medicine; Division Chief, Pediatric Emergency Medicine, UT Southwestern Medical Center; Director of Emergency Services, Children's Health, Dallas, TX

### International Editor

#### Lara Zibners, MD, FAAP, FACEP, MMed

Honorary Consultant, Paediatric Emergency Medicine, St. Mary's Hospital Imperial College Trust, London, UK; Nonclinical Instructor of Emergency Medicine, Icahn School of Medicine at Mount Sinai, New York, NY

### Pharmacology Editor

#### Aimee Mishler, PharmD, BCPS

Emergency Medicine Pharmacist, Program Director - PGY2 Emergency Medicine Pharmacy Residency, Maricopa Medical Center, Phoenix, AZ

### CME Editor

#### Brian S. Skrainka, MD, FACEP, FAAP

Clinical Assistant Professor of Emergency Medicine, Oklahoma State University Center for Health Sciences, The Children's Hospital at Saint Francis, Tulsa, OK

### APP Liaison

#### Brittany M. Newberry, PhD, MSN, MPH, APRN, ENP-BC, FNP-BC

Faculty, Emory University School of Nursing, Emergency Nurse Practitioner Program, Atlanta, GA; Nurse Practitioner, Fannin Regional Hospital Emergency Department, Blue Ridge, GA

## Case Presentations

An 11-year-old previously healthy boy presents to the ED on a busy Saturday evening. He has acute abdominal pain that started 18 hours ago as diffuse periumbilical abdominal pain. Within the last 3 hours or so, the pain migrated to the right lower quadrant and worsened in severity. The child says the bumps on the car ride to the hospital were painful, and hopping up and down makes the pain worse. He says it seems to be a bit better when he lies still and does not move. Oral ibuprofen has not really helped the pain. The patient has not eaten a meal all day and has vomited 3 times today. On presentation, he has a temperature of 38.3°C (101°F). He is fully immunized and does not have any upper respiratory symptoms. He has never had similar pain in the past and has no history of previous abdominal surgeries. He has a normal genitourinary examination. He has obvious discomfort with palpation of his abdomen with maximum tenderness in the right lower quadrant. He exhibits guarding and rebound tenderness. His mother asks you whether this could be appendicitis, and whether he will need surgery. You begin to think... Is this appendicitis? What else could it be? How will you definitively determine the diagnosis? What laboratory evaluation and imaging tests should you order? It is now 2:00 AM. If the patient definitely has appendicitis, does he need an emergent appendectomy or can it wait?

Your next patient is a 16-year-old girl with abdominal pain who is brought into the ED by her mother. When the girl arrived to the ED, her vital signs were age-appropriate except for tachycardia, with a heart rate of 115 beats/min. Initially, she had some mild pain in her lower abdomen that gradually got worse. What is your differential diagnosis? What history, physical examination findings, or diagnostic evaluations should you obtain?

Your last patient of the evening is a 4-year-old boy with abdominal pain who is brought into the ED by his parents. The parents report that the boy was at his baseline state of health until 2 days ago when he became more fatigued and did not want to play as much. Today, he has had poor oral intake and spiked a fever to 38.6°C (101.5°F). The patient has been moaning and seems to grab at his abdomen in pain. Again, the diagnosis of appendicitis comes to mind. Is the rate of perforated appendicitis higher in this age group? How do you get an accurate history and perform a physical examination if the child will not talk to you and cowers behind his father when you approach him?

## Introduction

Abdominal pain is a common chief complaint for pediatric patients presenting to an emergency department (ED) and, most of the time, the etiology is self-limited and nonemergent. Nonetheless, acute appendicitis must be considered in the differential diagnosis of abdominal pain in the pediatric population because missed acute appendicitis can lead

to morbidity and mortality as well as medicolegal consequences.

In children, acute appendicitis is the most common condition requiring emergency surgery, with > 75,000 children diagnosed annually in the United States.<sup>1</sup> The potential for morbidity and mortality from perforation of the appendix necessitates prompt diagnosis.<sup>2</sup> Although a variety of clinical scoring systems have been developed, there is still no consensus on clinical, laboratory, and imaging criteria for diagnosing appendicitis, which poses a dilemma for the emergency clinician.<sup>3-5</sup>

This issue of *Pediatric Emergency Medicine Practice* reviews the existing literature to help develop strategies for the diagnosis and management of appendicitis in the pediatric population.

## Critical Appraisal of the Literature

A literature search was performed in PubMed using the search terms *appendicitis*, *abdominal pain*, *pediatrics*, *clinical scoring systems*, *ultrasound*, *diagnostic tests*, *radiation risk*, and *non-operative management*. An English language filter was applied, and articles were sorted by relevance. Several thousand articles were found, with over 1000 screened by title, then abstract. A total of 101 articles were chosen for inclusion.

There are many deficiencies inherent to the quality of the literature, including the lack of pediatric studies and more retrospective studies. According to standard evidence-level scales, the majority of evidence for pediatric appendicitis falls into the “weak” or “moderately strong” categories, and there are many single-center studies with limited enrollment. There is an article from the Effective Health Care Program on the “Diagnosis of Right Lower Quadrant Pain and Suspected Appendicitis” in the National Guidelines Clearinghouse.<sup>6</sup> Despite these studies, there is no clear consensus on the approach to the pediatric patient with abdominal pain.

## Epidemiology and Pathophysiology

### Epidemiology

Among the pediatric population, appendicitis is the most common condition requiring emergent abdominal surgery, and is diagnosed in 1% to 8% of children evaluated in the ED for abdominal pain.<sup>7,8</sup> A delay in diagnosis is common in young children and has been reported in as many as 57% of cases in children aged < 6 years.<sup>9</sup> This delay is likely related to the atypical presentation of appendicitis in this age group, the overlap of symptoms with many common childhood illnesses, the inability of these children to communicate, and challenges related to assessment of the abdomen.<sup>10</sup> Delayed diagnosis, in turn, correlates with increased rates of perforation.<sup>11</sup> The rate of perforation decreases to < 15% in adolescence.<sup>10,12</sup>

Although children with abdominal pain present year-round and diagnoses of appendicitis are made throughout the year, it has been noted that rates are higher from May through September.<sup>13</sup> The lifetime risk of developing acute appendicitis among boys and girls is 8.6% and 6.7%, respectively.<sup>13</sup> Appendicitis rates are higher for white patients compared to nonwhite patients.<sup>13,14</sup> A retrospective study of 9424 pediatric patients found that the rate of acute appendicitis was 5.1% in white children compared to 1.9% in black children.<sup>14</sup> Black and Hispanic children are more likely to present with perforated acute appendicitis, compared to white children.<sup>15,16</sup>

## Pathophysiology

The appendix is a blind-ended tubular structure that arises from the posteromedial aspect of the cecum, proximal to the ileocecal valve. The average length of the appendix varies from neonates to adults, ranging from 4.5 mm to 9.5 mm.<sup>17</sup> The orientation of the appendix can be retrocecal, subcecal, preileal, retroileal, or in a pelvic site. This variability accounts for the range of clinical presentations of appendicitis.<sup>18,19</sup>

Appendicitis is a result of obstruction of the appendiceal lumen. Obstruction can occur secondary to stones, fecaliths, or other processes that inflame the lymphoid tissue. Intraluminal bacterial overgrowth follows appendiceal obstruction and leads to breakdown of the mucosal barrier, bacterial invasion of the appendiceal wall, inflammation, ischemia, and gangrene, eventually leading to perforation. Inflammation of the wall of the appendix causes peritonitis, which produces localized abdominal pain and tenderness as well as typical right lower quadrant tenderness, guarding, and rebound. Perforation is rare in the first 12 hours but is increasingly common thereafter (especially after 72 hours), and it leads to release of bacteria into the peritoneal cavity.<sup>19-21</sup>

The bacteria that cause appendicitis include the usual fecal flora. A 2014 retrospective study of 415 adult patients with peritoneal fluid or periappendiceal abscess culture-positive appendicitis found that the most common pathogens were *Escherichia coli* (66.7%), *Streptococcus* (14.7%), *Enterococcus* (7.7%), *Klebsiella* (6%), and *Pseudomonas* (5.8%).<sup>22</sup> Less commonly, enteric pathogens and parasites including adenovirus, rubeola (measles), *Actinomyces israelii*, *Enterobius vermicularis* (pinworm), and *Ascaris lumbricoides* (roundworm) may directly infect the appendix or cause localized appendiceal lymphoid hyperplasia with obstruction.<sup>23</sup>

Neoplasms of the appendix are rare, and found in 1% of appendectomy specimens. Carcinoid tumors are the most common, comprising > 50% of appendiceal neoplasms.<sup>24</sup> A retrospective study of 4747 pediatric appendectomies found the incidence of appendiceal carcinoid tumors to be 1 in 593 appendectomies (0.169%).<sup>25</sup> A carcinoid tumor is a neoplasm

originating from neuroendocrine tissue found along the primitive gastrointestinal tract. Appendiceal carcinoid tumors rarely cause metastatic disease and are commonly an incidental finding at the time of appendectomy.<sup>24-26</sup> Carcinoid tumors cause appendicitis as a form of luminal obstruction, but this is uncommon, as they are most often located at the tip of the organ.<sup>26</sup> Goblet cell carcinoids (also called *adenocarcinoids*) arise from a pluripotent cell that differentiates into both mucinous and neuroendocrine cells. Goblet cell carcinoids are aggressive tumors and can recur locally or metastasize to the lungs, which is why complete removal of these tumors is recommended.<sup>27</sup>

## Differential Diagnosis

If bilious vomiting is present along with abdominal pain in infants and younger children, malrotation with midgut volvulus must be considered. Intussusception should be considered in younger patients (typically aged ≤ 3 years) presenting with episodic abdominal pain. Diabetic ketoacidosis should always be considered in a child with abdominal pain, vomiting, and anorexia; and basilar pneumonia can also present with abdominal pain. The most common misdiagnoses of appendicitis are acute gastroenteritis and constipation. In a retrospective study, 26% of cases of missed appendicitis were initially diagnosed as gastroenteritis.<sup>28</sup>

In girls of childbearing age, pelvic pathology is common and is easily confused with appendicitis. For these patients, the differential must include gynecologic/obstetrical causes such as ovarian torsion or pelvic inflammatory disease, and a detailed sexual history and urine pregnancy test should be obtained. Pelvic ultrasonography should also be considered to rule out ovarian torsion if the history is suspicious. A pelvic examination may be necessary in adolescent girls who are at risk for sexually transmitted infections or pelvic inflammatory disease.

Postpubertal male patients should undergo a complete physical examination, including a genitourinary examination, to rule out testicular torsion or other genitourinary diagnoses.

For a list of causes of right lower quadrant pain, see Table 1, page 4.

## Prehospital Care

Children with suspected appendicitis should receive nothing by mouth (NPO) until a definitive diagnosis is made. Hydration status should be assessed, and intravenous (IV) hydration initiated, if needed, as well as pain control. If a need for a pediatric surgeon is anticipated, transfer to a higher-level facility should be started.<sup>9</sup>



## Emergency Department Evaluation

The clinical presentation of children with appendicitis varies from that of adults. In preverbal toddlers and preschoolers, a pain history is often impossible; a caregiver must communicate the history. Conclusions must be drawn from the caregiver's assumptions and descriptions of how the child has been feeding, sleeping, and voiding. The physical examination findings can help determine the location of pain.

In older children, abdominal pain is a nearly universal symptom of acute appendicitis. Pain classically begins as poorly defined midabdominal or periumbilical pain that migrates to the right lower quadrant over a period of hours to days. Unlike younger children who may not be able to accurately describe their pain, school-aged children can usually reliably describe their pain.

**Table 1. Differential Diagnosis of Right Lower Quadrant Abdominal Pain**

### Gastrointestinal

- Appendicitis
- Appendiceal neoplasm
- Constipation
- Gastroenteritis
- Inflammatory bowel disease (Crohn disease or ulcerative colitis)
- Intussusception
- Meckel diverticulitis
- Mesenteric adenitis
- Omental torsion/infarct
- Pancreatitis
- Perforated ulcer
- Small-bowel obstruction
- Typhlitis

### Gynecological

- Endometriosis
- Ovarian torsion
- Pelvic inflammatory disease
- Ruptured ovarian cyst
- Mittelschmerz

### Obstetrical

- Ectopic pregnancy
- Intra-amniotic infection
- Labor
- Placental abruption
- Round ligament pain
- Severe pre-eclampsia and HELLP syndrome
- Uterine rupture

### Genitourinary

- Hernia
- Nephritis
- Orchitis
- Testicular torsion
- Urinary tract infection
- Renal colic (stone, ureteropelvic junction obstruction)

### Extra-abdominal causes

- Diabetic ketoacidosis
- Hemolytic uremic syndrome
- Henoch-Schönlein purpura
- Osteomyelitis of the hip
- Referred pain from pneumonia/pleuritis
- Septic arthritis of the hip
- Streptococcal pharyngitis

Abbreviation: HELLP, hemolysis, elevated liver enzymes, low platelet count.

www.ebmedicine.net

## Age-Specific Considerations

### Infants

Although the occurrence of appendicitis is much less likely in this age group, it is also more difficult to diagnose, and delayed diagnosis leads to perforation or bowel obstruction.<sup>9,12,29</sup> When the history is obtained from parents or caregivers, they should be asked about vomiting, diarrhea, irritability, fever, and decreased oral intake. Other features may include a palpable abdominal mass. Localized right lower quadrant pain is noted in < 50% of infants.<sup>9</sup>

### Prepubertal Children

Appendicitis is rare in the prepubertal age group, with children aged  $\leq 5$  years accounting for < 5% of cases of appendicitis.<sup>30</sup> Adult studies show that abdominal pain almost always precedes vomiting. This typical sequence is less common in preschool-aged children, and they can present with vomiting that precedes abdominal pain. Children aged  $\geq 2$  years begin to acquire communication skills that permit earlier identification of appendicitis, but it is still very important to obtain a detailed history from the caregiver, as children in this age group are likely to give the same response to questions: either "yes" or "no." Distraction techniques may need to be used to reduce the anxiety a child may feel when a stranger examines a painful body part. Another way to assess for abdominal pain in this age group is to ask the child to hop up and down.

School-aged children are able to describe their symptoms better and are able to cooperate with the physical examination, making the history and physical examination much more clear. Children often present with classic symptoms of fever, nausea, vomiting, and anorexia. Periumbilical pain that migrated to the right lower quadrant is a common presenting symptom. Rebound, guarding, and peritoneal signs are concerning for ruptured appendicitis.<sup>9</sup>

### Postpubertal Children

The incidence of appendicitis peaks during adolescence. During a private interview with the patient, a thorough social and sexual history should be obtained for all patients in this age group.

## General Considerations

Fever is a common and nonspecific presenting symptom. In a prospective study, fever was the most suggestive sign of appendicitis in patients with undifferentiated abdominal pain. In a study of 246 patients with abdominal pain, both fever and vomiting were present in 18 of the 24 patients who were diagnosed with appendicitis compared to 49 of the 222 patients with other final diagnoses ( $P < .01$ ; negative predictive value [NPV], 0.97; sensitivity, 0.75; specificity, 0.78; positive predictive value [PPV], 0.27).<sup>31</sup> Anorexia, nausea, vomiting, duration of abdominal pain,

and diarrhea can be associated with appendicitis but are also present in other conditions.<sup>31</sup> History of anorexia can be elicited by asking school-aged children if they are hungry, but in toddlers and preschoolers, anorexia may have to be inferred from a caregiver's history of food refusal or decreased appetite. Duration and progression of abdominal symptoms can be difficult to elicit in children but are critical to distinguish acute appendicitis from other potentially resolving causes of abdominal pain.

## Physical Examination

The appendix may arise from different locations off of the cecum, which affects its projection in the abdomen (eg, retrocecum, pelvis, or extraperitoneum). As a result, patients may present with pain to different sites, based upon the location of the appendix. If the appendix is in the retrocecum, the pain may be absent in the abdominal area due to overlap by a distended cecum covering the appendix. Similarly, if the appendix lies in the pelvis, pain may be felt in this area rather than the abdomen.

Although physical examinations in younger children can be challenging at best, the history and physical examination (including repeat examinations, close follow-up, and observation) are key to making the diagnosis.<sup>9</sup> Younger children may have trouble cooperating with the examination, and they may not be able to answer questions clearly. It can be helpful to spend several minutes talking with a child to gain trust prior to beginning the examination. Painless components of the examination should be done first. Younger children may be more cooperative if allowed to sit on a caregiver's lap. Most school-aged children and adolescents can cooperate with an abdominal examination and state whether specific maneuvers are painful.

For children who do not want their abdomen examined, there are several distraction techniques that may be helpful. Most children will continue engaging in conversation if maneuvers are not painful. Telling the child that you are listening to his/her abdomen while using a stethoscope to palpate the 4 quadrants can provide a sense of where tenderness lies. In children who remain uncooperative despite all efforts of distraction, an examination while the child is asleep can be helpful.

Classic signs of appendicitis on physical examination are<sup>32</sup>:

- Local tenderness with some rigidity of the abdominal wall at or near McBurney point (the point over the right side of the abdomen that is one-third of the distance from the anterior superior iliac spine to the navel. This point corresponds roughly to the most common location of the base of the appendix where it is attached to the cecum.) Local tenderness with some rigidity of the abdominal wall at or near McBurney point

has a sensitivity of 86.3% and specificity of 94.5%.

- Rovsing sign (pain in the right lower quadrant on palpation of the left side) has a sensitivity of 35% and specificity of 90% (95% CI; 30%-40% and 87%-92%, respectively).
- Obturator sign (pain on internal rotation of the right hip) has a sensitivity of 34% and specificity of 90% (95% CI; 27%-41% and 86%-94%, respectively).
- Iliopsoas sign (pain on extension of the right hip, which is found in retrocecal appendicitis) has a sensitivity of 38% and specificity of 88% (95% CI, 31%-46% and 83%-91%, respectively).
- Rebound tenderness or pain with release of pressure after deep palpation of the abdomen has a sensitivity 86.9% and specificity of 78.6%.

To view a video that demonstrates evaluation for the classic signs of appendicitis, go to: [www.youtube.com/watch?v=6LrL4ysi\\_AE](http://www.youtube.com/watch?v=6LrL4ysi_AE).

Among studies on patients with suspected appendicitis, the Rovsing sign was the examination finding that was most suggestive of acute appendicitis.<sup>32</sup> The sensitivity of cough/hop tenderness was 74.6%, with a specificity of 84.8%. The sensitivity of guarding on physical examination was 69%, and the specificity was 67% (95% CI; 65%-73% and 64-69%, respectively).<sup>32</sup> In a prospective study, 88 of 123 (72%) patients with acute appendicitis presented with cough/hop pain compared to 68 of 726 (9%) patients without acute appendicitis ( $P < .001$ ; odds ratio, 24.3 [95% CI, 15.3-38.7]); and 98 of 123 (80%) had right iliac fossa tenderness compared to 84 of 726 (12%) without acute appendicitis ( $P < .001$ ; odds ratio, 19.4 [95% CI, 12.0-31.4]). These examination findings were the most suggestive of acute appendicitis.<sup>33</sup>

## Diagnostic Studies

### Scoring Systems

Since no single sign or symptom has been found to be sufficiently sensitive or specific for appendicitis in children, several clinical scoring systems have been developed to help guide clinical management. The pediatric appendicitis score (PAS) is a tool that uses history, physical examination, and laboratory results to categorize the risk of appendicitis in children with abdominal pain. The PAS is easy to apply, and separates patients into categories of low risk (PAS 1-2), intermediate risk (PAS 3-6), and high risk (PAS 7-10).<sup>3</sup> (See Table 2, page 6.) A prospective validation of the PAS in 849 children demonstrated an area under the curve (AUC) of 0.95. If a PAS score of  $\leq 2$  was used to discharge a patient home without further workup, only 2.4% of those patients discharged home would have had appendicitis. If a PAS score of  $\geq 7$  was used to take a patient to the operating room without further workup, only 4% of the patients

would have a negative appendectomy.<sup>33</sup>

The Alvarado scoring system assigns a point value to diagnostic criteria, with a maximum of 10 points. (See Table 3). A patient with a score < 3 is considered to be at low risk for appendicitis. A score of 3 or 4 is considered to be “equivocal” for appendicitis. A score of 5 to 6 is considered to be “compatible with appendicitis,” and observation, at least, is recommended. Patients with a score of ≥ 7 have “probable appendicitis,” and the recommendation is to take these patients to the operating room.<sup>4</sup> In a prospective study, 588 patients were enrolled to evaluate the performance of the Alvarado and PAS scores. An Alvarado score > 7 yielded a sensitivity of 72% and specificity of 81% (95% CI; 66%-78% and 76%-84%, respectively), and an NPV of 85% and a PPV of 65% (95% CI; 81%-89% and 59%-72%, respectively).<sup>34</sup> In a systematic review of 26 prospective studies, likelihood ratios for the Alvarado score were 0.02 (< 4 points), 0.27 (4-6 points), 4.2 (≥ 7 points). Likelihood ratios for the PAS score were 0.13 (< 4 points), 0.70 (4-7 points), and 8.1 (≥ 8 points).<sup>35</sup> The PAS and Alvarado scoring systems revealed variable clinical accuracy and limited clinical utility on external validation, with a majority of patients receiving intermediate risk scores.

Recently, a new scoring calculator, the pediatric appendicitis risk calculator (pARC), was developed and validated. The calculator provides a patient-specific risk for appendicitis and has demonstrated good test performance, which, in recent studies, was superior to the PAS.<sup>5,36</sup> Variables included in the calculator are: sex, age, duration of pain, guarding, migration of pain to the right lower quadrant, maximal tenderness in the right lower quadrant, and absolute neutrophil count. The main benefit of the pARC over prior scores is that many patients are classified as being < 15% risk of or ≥ 85% risk of appendicitis; if the PAS score was used, more patients would fall into the intermediate risk category. However, the calculator requires sophisticated calculations, which hinders widespread adoption of the score. The pARC calculator is available at [www.parcscore.org](http://www.parcscore.org).<sup>5</sup>

**Table 2. Pediatric Appendicitis Score (PAS)<sup>3</sup>**

Finding	Score
Anorexia	1
Nausea or vomiting	1
Migration of pain	1
Fever > 38°C (100.5 °F)	1
Pain with cough, percussion, or hopping	2
Right lower quadrant tenderness	2
White blood cell count > 10,000 cells/mcL	1
Neutrophils plus band forms > 7500 cells/mcL	1
<b>Total = the pediatric appendicitis score</b>	

An MDCalc online tool for the pediatric appendicitis score is available at: [www.mdcalc.com/pediatric-appendicitis-score-pas](http://www.mdcalc.com/pediatric-appendicitis-score-pas)



An MDCalc online tool for the Alvarado score is available at: [www.mdcalc.com/alvarado-score-acute-appendicitis](http://www.mdcalc.com/alvarado-score-acute-appendicitis)



An MDCalc online tool for the pediatric appendicitis risk calculator is available at: [www.mdcalc.com/pediatric-appendicitis-risk-calculator-parc](http://www.mdcalc.com/pediatric-appendicitis-risk-calculator-parc)



## Laboratory Studies

### White Blood Cell Count

Although a white blood cell (WBC) count is frequently ordered in the workup of acute appendicitis, an elevated WBC count can be nonspecific. One study demonstrated that the WBC count and absolute neutrophil count (ANC) have a better diagnostic performance for suspected appendicitis in older children. The AUC for WBC count was 0.69 for patients aged < 5 years, 0.76 for patients aged 5 to 11 years, and 0.83 for patients aged 12 to 18 years (95% CI; 0.61 to 0.77, 0.73 to 0.79, and 0.81 to 0.86, respectively). The AUCs for ANC mirrored WBC performance.<sup>37</sup> In a meta-analysis, a WBC count < 9000/mcL and < 75% neutrophils had a negative likelihood ratio for appendicitis of 0.17 (95% CI, 0.07-0.42).<sup>38</sup> Several studies have demonstrated that the main utility of the WBC count can be to rule out appendicitis, with a low WBC count and ANC providing reassurance for the absence of appendicitis.<sup>39-42</sup>

### C-Reactive Protein

C-reactive protein (CRP) is a nonspecific inflammatory marker, but the combination of the WBC

**Table 3. Alvarado Scoring System<sup>4</sup>**

Finding	Score
Pain migration	1
Anorexia	1
Nausea/vomiting	1
Tenderness in right lower quadrant	2
Rebound abdominal pain	1
Elevation of temperature ≥ 37.3°C (99.1°F)	1
Leukocytosis with WBC count > 10,000 cells/mcL	2
Differential WBC count with > 75% neutrophils	1
<b>Total = the Alvarado score</b>	

Abbreviation: WBC, white blood cell.



count and CRP increases the sensitivity of laboratory evaluation for acute appendicitis. The likelihood of appendicitis is increased if the WBC count is > 10,000 cells/mcL, CRP is > 3 mg/dL, and/or ANC is > 7000 cells/mcL.<sup>9,32,39,43</sup> Depending on the duration of symptoms, the WBC count and CRP can help differentiate patients with simple and perforated appendicitis.<sup>42</sup> CRP is less sensitive in the early stages of appendicitis compared to WBC count. CRP may be more accurate in detecting perforated appendicitis compared to WBC count, especially in patients with prolonged duration of pain.<sup>38,44,45</sup> A retrospective study of 128 patients found CT severity scores (using a 0-, 1-, or 2-point scale) based on CT-determined appendiceal diameters, appendiceal wall changes, caecal changes, periappendiceal inflammatory stranding, and phlegmon or abscess formation were highly correlated with CRP levels ( $r = 0.669$ ,  $P < .01$ ).<sup>44</sup> A meta-analysis found that, for patients with perforated appendicitis, the AUC was higher for CRP 0.87 compared to 0.85 for WBC count (95% CI; 0.74-1.01 and 0.81-0.89, respectively).<sup>38</sup> WBC count, ANC, and CRP are increased in patients with acute appendicitis, and, in combination with ultrasound and physical examination findings, can greatly increase their predictive value in the diagnosis of appendicitis.<sup>43</sup>

In summary, most patients with acute appendicitis will have an elevated WBC count, ANC, or CRP. Low (nonelevated) values for the WBC count and ANC offer some benefit for ruling out appendicitis.<sup>9,19,32</sup>

### Urinalysis

A urinalysis may be useful in differentiating appendicitis from a urinary tract infection or nephrolithiasis. However, abnormal urinalysis findings can lead to misdiagnosis, as 7% to 25% of children with appendicitis have > 5 WBCs or RBCs per high-power field.<sup>9</sup>

### Imaging Studies

Imaging studies are not warranted in most children with undifferentiated abdominal pain who are unlikely to have appendicitis, based on clinical examination and laboratory studies.<sup>5,39</sup> When warranted, imaging studies can be helpful to establish or exclude the diagnosis of appendicitis.

Ultrasound-first strategies published by the American College of Radiology and the American College of Emergency Physicians advocate for ultrasound as the initial diagnostic study in the workup of pediatric appendicitis to prevent ionizing radiation exposure in the pediatric population.<sup>2,3</sup> While computed tomography (CT) scans may have higher diagnostic yield, their use is not without risk. CT-related radiation exposure has been shown to increase cancer risk. X-rays are not routinely useful in the diagnosis of acute appendicitis, but recognition of an appendi-

colith may provide radiographic evidence of appendicitis.<sup>46</sup> Uncommonly, basilar pneumonia in children may present with abdominal pain.<sup>47,48</sup> However, with a classic presentation of appendicitis, children can be taken directly to the operating room without further imaging studies, per a surgeon's discretion.<sup>33,49,50</sup>

### Ultrasound

Ultrasound has gained acceptance as the initial imaging study for patients with suspected appendicitis. Graded compression is the ultrasound technique most commonly used in the diagnosis of appendicitis.<sup>51</sup> However, the addition of posterior manual compression or positional scanning (scanning in the flank and pelvis region in addition to right lower quadrant) may improve visualization.<sup>52,53</sup> In pediatric patients, the overall sensitivity and specificity of ultrasound were 88% and 94%, respectively (95% CI; 86-90% and 92%-95%, respectively).<sup>54</sup>

The diagnosis of acute appendicitis can be largely excluded by ultrasound if the entire appendix is visualized and no secondary signs are seen. However, caution should be exercised in obtaining an ultrasound too early in the disease course (eg, with < 12 hours of symptoms), as it is associated with false-negative studies. Visualization rates vary from 22% to 98%.<sup>52-54</sup> Factors that affect variability include the skill of the sonographer and the child's body habitus. In an observational study of 263 children aged 4 to 17 years with suspected appendicitis, ultrasound was inaccurate in 101 examinations; inaccurate examinations were significantly associated with high body mass index (BMI  $\geq$  85<sup>th</sup> percentile, primarily false-negative studies).<sup>55</sup> ED point-of-care ultrasound (POCUS) can be useful to rule in appendicitis, but if clinical suspicion is high, a negative ED POCUS is not sufficient to rule out appendicitis.<sup>32</sup>

Ultrasound findings associated with appendicitis include: a noncompressible appendix, appendix wall diameter > 2 mm, overall appendiceal diameter > 6 mm, local right lower quadrant tenderness during ultrasound examination, and presence of appendicolith.<sup>51,56-58</sup> (See Figure 1, page 8.) Secondary signs associated with acute appendicitis include: free fluid in the right lower quadrant, echogenic edematous mesenteric fat stranding, appendiceal wall hyperemia, abnormal lymph nodes, abnormal adjacent bowel, and bowel wall edema.<sup>59-61</sup>

Several quality improvement studies demonstrated that, after the implementation of a standardized radiology report that included details about secondary signs of appendicitis, there was a decrease in CT use, decreased admission for observation in patients with suspected appendicitis and a nondiagnostic ultrasound, and decreased annual imaging costs.<sup>62-64</sup>

The rate of nonvisualized appendix ultrasound is reported to be 50%,<sup>65</sup> and there are differences in the literature on how these patients should be managed.

Surgical consultation is useful with nondiagnostic imaging. Next steps include observation for serial abdominal examinations, CT scan, or magnetic resonance imaging (MRI).<sup>43,59,63</sup> However, an equivocal ultrasound (ie, appendix incompletely visualized or nonvisualized) without secondary signs of acute appendicitis coupled with a nonelevated WBC count suggests that the patient probably does not have appendicitis. In a retrospective cohort study of 845 patients undergoing ultrasound for suspected appendicitis, the NPV of a nonvisualized appendix without primary or secondary signs of appendicitis (WBC count  $\leq 9000/\text{mCL}$  and polymorphonuclear leukocyte differential  $\leq 65\%$ ) was 95.0 (95% CI, 89.5-100).<sup>43</sup>

### Computed Tomography

CT is generally available and is not operator-dependent. Additionally, CT can be useful in establishing an alternative diagnosis.<sup>66</sup> In pediatric patients, the sensitivity and specificity of CT for the diagnosis of pediatric appendicitis is 94% and 95%, respectively (95% CI; 92%-97% and 94%-97%, respectively).<sup>54</sup> CT findings of acute appendicitis include a fluid-filled tubular structure  $> 6$  mm in diameter with periappendiceal inflammation.<sup>54,66,67</sup> CT scans with IV contrast alone are sufficient, as observational studies show that oral or rectal contrast does not improve the test performance over IV contrast alone.<sup>68,69</sup> A prospective study demonstrated that the sensitivity of ultrasound for appendicitis improved with longer duration of abdominal pain, whereas CT demonstrated high sensitivity regardless of pain duration.<sup>70</sup> Importantly, CT scans are associated with ionizing radiation, which can increase an individual's lifetime cancer risk. One retrospective study reported that a radiation-induced solid cancer is projected to result from every 300 to 390 abdomen/pelvis CT scans in girls aged  $< 15$  years.<sup>71</sup>

### Magnetic Resonance Imaging

MRI with or without contrast may be a suitable alternative to CT when ultrasound results are not diagnostic in children. MRI is not operator-dependent and does not expose children to ionizing radiation.<sup>72,73</sup> Several meta-analyses reported the diagnostic accuracy of MRI for appendicitis in children, with a pooled sensitivity of 96% and a pooled specificity of 96% (95% CI; 95%-97% and 94%-98%, respectively).<sup>73-75</sup> Studies demonstrate that a combination of ultrasound and MRI is feasible and comparable to CT, without affecting the negative appendectomy rate or perforation rate.<sup>76,77</sup> Like all diagnostic imaging modalities, MRI is not always definitive, and further study is needed.<sup>72,73</sup>

Limitations of MRI for the evaluation of appendicitis in the pediatric population include limited availability at certain facilities, the length of time it takes to complete the study, and the potential need for sedation in young children.<sup>72</sup> A 2017 retrospective study described the possible toxic effects of gadolinium, which include nephrogenic systemic fibrosis and intracranial deposition; these toxic effects may limit its use. More information about the effects of the contrast on children is needed before it can be recommended for widespread use.<sup>78</sup>

### Selection of Imaging Study

There are limited data comparing the total costs of diagnosing and treating children with suspected appendicitis. A 2018 prospective study reported a 5.2% lower cost per case for sites that preferentially utilized ultrasound in the diagnosis of acute appendicitis compared to sites that primarily used CT.<sup>79</sup> Imaging rates vary due to clinical practice guidelines, clinician preferences, and imaging availability.<sup>79,80</sup> A recent analysis stratified patients into low-,

**Figure 1. Ultrasound Images of Acute Appendicitis in a Child**



A noncompressible, inflamed appendix is shown in (A) a cross-sectional view (7.5 MHz) and (B) a longitudinal section (7.5 MHz). Mural lamination of the swollen appendix is maintained in the early stages of acute appendicitis. In (C), an appendicolith (arrow) with acoustic shadowing is demonstrated (5 MHz).

Republished with permission of McGraw-Hill Education, from *Ma and Mateer's Emergency Ultrasound*, Chapter 11. General Surgery Applications, Ogata M, 3e, 2013; permission conveyed through Copyright Clearance Center, Inc.



medium-, and high-risk categories for acute appendicitis followed by the staged utilization of ultrasound/CT, and it found a further 16% reduction in costs, without changes in patient outcomes.<sup>81</sup>

## Treatment

Initial stabilization of patients with acute appendicitis includes pain control, keeping the patient NPO, and IV hydration. IV ondansetron (0.15 mg/kg/dose every 8 hours or as needed, max dose 8 mg) or a similar antiemetic agent can be given for nausea/vomiting associated with appendicitis.

Early analgesia is recommended. There was no increase in missed appendicitis or in negative appendectomies after analgesia with IV morphine (0.05 mg/kg, max dose 10 mg).<sup>82,83</sup> A recent retrospective trial conducted in Canadian pediatric EDs demonstrated that children with suspected appendicitis typically receive inadequate pain control. Out of 619 children with suspected appendicitis (88.4% with an appendectomy), 61% of patients received analgesia, with 42.8% receiving IV morphine. The median initial dose of morphine was 0.06 mg/kg, and the median time from triage to initial dose of analgesia was 196 minutes. Forty-three percent of patients received their initial dose of analgesia after surgical consultation, and 43.7% of patients received their initial dose of analgesia after an ultrasound was performed.<sup>84</sup>

Typically, surgical treatment is indicated for acute appendicitis. In patients with acute appendicitis, antibiotics are usually given preoperatively to decrease the risk of abscess formation and wound infection. Based on guidelines published by the Surgical Infection Society and the Infectious Diseases Society of America, the first-line antibiotic choice is ceftriaxone 50 to 75 mg/kg/dose IV once daily (max 2000 mg/dose) plus metronidazole 10 mg/kg/dose IV every 8 hours (max 500 mg/dose). If the patient is severely allergic to beta-lactam medications, the recommendation is to give ciprofloxacin 10 mg/kg/dose IV every 12 hours, (max dose 500 mg/dose) plus metronidazole 10 mg/kg/dose IV every 8 hours (max 500 mg/dose) or an aminoglycoside-based regimen.<sup>85</sup> Alternative antibiotic regimens include an aminoglycoside-based regimen (gentamicin 2.5 mg/kg/dose IV every 8 hours), a beta lactam/beta-lactamase-inhibitor combination (piperacillin/tazobactam 100 mg piperacillin/kg/dose IV every 6 to 8 hours [max 16,000 mg piperacillin/day]); or a carbapenem-based regimen (ertapenem 15 mg/kg/dose IV every 12 hours [max 500 mg/dose]).

In the past, acute appendicitis has been considered to be a surgical emergency that requires prompt appendectomy to avoid perforation and other complications. Recent studies suggest that adverse outcomes are not increased in children who receive timely administration of antibiotics and undergo

appendectomy < 24 hours after diagnosis.<sup>86,87</sup> A 2017 prospective study demonstrated that time delays to appendectomy up to 12 hours from initial ED evaluation did not increase the odds of perforation.<sup>88</sup>

Nonoperative management for acute appendicitis may be feasible. However, the failure rate is higher compared to appendectomy.<sup>89</sup> See the “Non-operative Management” section on page 11 for more information.

## Special Populations

### Appendicitis in Children Aged < 5 Years

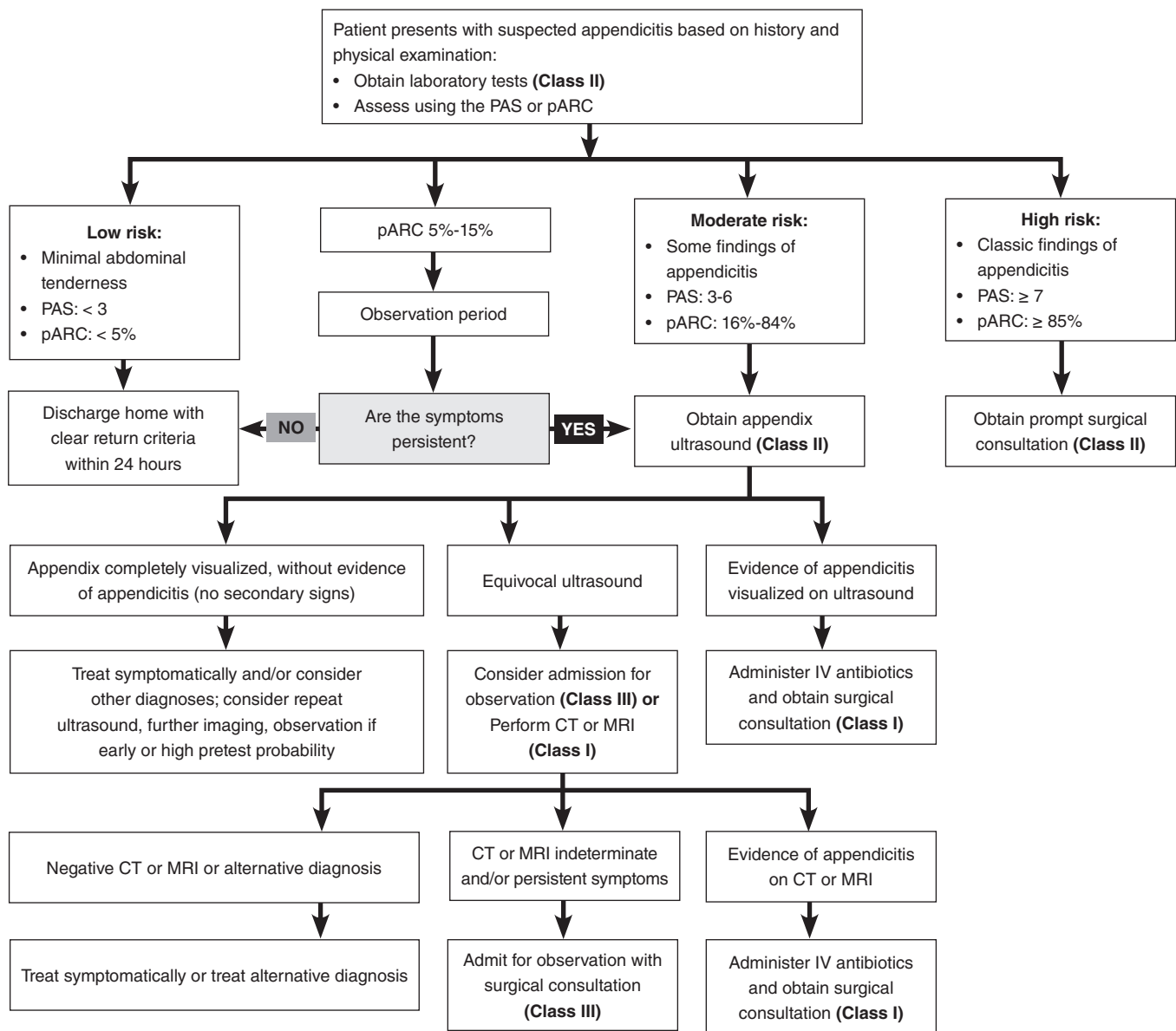
The diagnosis of acute appendicitis in preschool-aged children remains a challenge. Most of these children present with complications (perforation, abscess formation, and peritonitis). Delay in diagnosis has been attributed to nonspecific presentations, overlap of symptoms with common childhood illnesses, inability of the child to communicate, and a challenging abdominal examination. The misdiagnosis rate ranges from 28% to 70% in children aged 2 to 12 years and approaches 100% in children aged < 2 years.<sup>10,37</sup> Rates of perforated appendicitis range from 20% to 53% in preadolescent children. A retrospective study examining children aged 3 to 12 years found that nausea, right lower quadrant tenderness, inability to walk, and elevated WBC and neutrophil counts were sensitive indicators of acute appendicitis in preadolescent children. When peritoneal signs are present, they substantially increase the likelihood of appendicitis.

### Appendicitis in Pregnant Patients

Acute appendicitis is the most common surgical condition in pregnancy. Appendicitis occurs in about 1 in 1500 pregnancies and is most common in the second trimester. A mildly elevated WBC count is common in pregnancy, so it may not be a clear indicator of appendicitis.<sup>90</sup> The majority of pregnant women present with right lower quadrant abdominal pain.<sup>90</sup> However, as the uterus grows in size, the appendix migrates in the cephalad direction, and by the third trimester of pregnancy, pain may be located in the mid or upper right quadrant of the abdomen.<sup>90,91</sup>

The initial diagnostic imaging study of choice for pregnant patients is ultrasonography, although nonvisualization of the appendix is more common during pregnancy.<sup>92</sup> MRI would be the second-line imaging study, as it avoids ionizing radiation.<sup>93,94</sup> Treatment for appendicitis during pregnancy is appendectomy. Management with antibiotics alone is not recommended because it is associated with treatment failure. Delaying appendectomy is associated with increased rates of perforation.<sup>95,96</sup> The risk of fetal loss increases if the appendix perforates.<sup>97</sup>

# Clinical Pathway for the Diagnosis of Appendicitis in Pediatric Patients



Abbreviations: CT, computed tomography; IV, intravenous; MRI, magnetic resonance imaging; pARC, pediatric appendicitis risk calculator; PAS, pediatric appendicitis score.

## Class of Evidence Definitions

Each action in the clinical pathways section of *Pediatric Emergency Medicine Practice* receives a score based on the following definitions.

### Class I

- Always acceptable, safe
- Definitely useful
- Proven in both efficacy and effectiveness

#### Level of Evidence:

- One or more large prospective studies are present (with rare exceptions)
- High-quality meta-analyses
- Study results consistently positive and compelling

### Class II

- Safe, acceptable
- Probably useful

#### Level of Evidence:

- Generally higher levels of evidence
- Nonrandomized or retrospective studies: historic, cohort, or case control studies
- Less robust randomized controlled trials
- Results consistently positive

### Class III

- May be acceptable
- Possibly useful
- Considered optional or alternative treatments

#### Level of Evidence:

- Generally lower or intermediate levels of evidence
- Case series, animal studies, consensus panels
- Occasionally positive results

### Indeterminate

- Continuing area of research
- No recommendations until further research

#### Level of Evidence:

- Evidence not available
- Higher studies in progress
- Results inconsistent, contradictory
- Results not compelling

This clinical pathway is intended to supplement, rather than substitute for, professional judgment and may be changed depending upon a patient's individual needs. Failure to comply with this pathway does not represent a breach of the standard of care.

Copyright © 2019 EB Medicine. [www.ebmedicine.net](http://www.ebmedicine.net). No part of this publication may be reproduced in any format without written consent of EB Medicine.

## Controversies and Cutting Edge

### New Scoring Systems

There are several scoring systems available to help guide clinical management in the workup and diagnosis of acute appendicitis. The PAS and modified Alvarado score are well known; however, in validation studies, these scoring systems had limited clinical utility.<sup>33-35</sup> Recently, the pARC score has been shown to predict the risk of appendicitis with high discrimination (AUC 0.85).<sup>5</sup> Use of the pARC score requires sophisticated calculations that require the use of a calculator. Further research is required to determine how best to integrate the use of clinical scoring systems, diagnostic imaging, and/or serial abdominal examinations into the workup of pediatric appendicitis.

### Nonoperative Management

Appendectomy for early appendicitis is the treatment of choice. However, there has been emerging evidence in the literature regarding nonoperative treatment of pediatric appendicitis. Nonoperative treatment may be an option in select children with early, uncomplicated appendicitis. Specifically, it may be safe for children aged  $\geq 6$  years who can describe their symptoms and have features of early appendicitis. These features include abdominal pain  $< 48$  hours, WBC count  $\leq 18,000$  cells/mcL, normal CRP, no appendicolith present on imaging, appendix diameter  $\leq 1.1$  cm on imaging, and no preoperative concern for rupture, based on clinical findings.

A meta-analysis evaluated 5 prospective trials: 1 randomized trial and 4 prospective controlled trials in which nonoperative treatment was performed based on parent preference. Nonoperative treatment of appendicitis was successful in 91% of patients in the first month after presentation. By 1 year, 73% of patients had not undergone appendectomy and the recurrent appendicitis rate was documented at 22%.<sup>98</sup> In a meta-analysis of 10 studies with a total of 413 children undergoing nonoperative treatment, initial treatment was effective in 97% of patients at reported follow-up (ranging from 8 weeks-4 years), and the appendicitis recurrence rate was 14%. There was significant variation in antibiotic protocols, but they typically included 1 to 2 days of parenteral broad-spectrum antibiotics (eg, piperacillin-tazobactam, ceftriaxone and metronidazole, or ciprofloxacin and metronidazole) until resolution of symptoms and normalization of WBC count occurred, followed by oral antibiotics to complete a total of 10 days of antibiotics.<sup>99</sup> A retrospective study of insurance databases documented initial nonoperative treatment in 4000 children. Forty-six percent subsequently had an appendectomy and 14% had perforated appendicitis. During a 1-year follow-up period, nonoperative management was associated with significantly more

advanced imaging and hospitalizations for appendicitis-related complications.<sup>89</sup> Longer-term clinical outcomes in large randomized trials are needed to inform decision-making. The APPY trial will be the first multicenter randomized trial comparing nonoperative treatment to appendectomy for acute uncomplicated appendicitis in children.<sup>99,100</sup>

In summary, nonoperative management may be an option in certain populations, but the risk of recurrence, need for diagnostic imaging to confirm the diagnosis, and exposure to broad-spectrum antibiotics must be considered.<sup>101</sup>

### Disposition

Most children with the diagnosis of acute appendicitis should be admitted, and will need fluid resuscitation, IV antibiotics targeting enteric aerobes and anaerobes, and analgesia. Conversely, if a definitive diagnosis has not been established, the decision to admit for observation versus discharge with close follow-up should be made in conjunction with the surgical team and parental agreement. The child can also be observed in the ED for a brief period of time prior to more extensive testing. Patients who are discharged home should receive specific criteria for when to return to the ED.<sup>9</sup>

### Summary

Appendicitis remains a common surgical emergency in the pediatric population. When acute appendicitis is suspected, there are several clinical scoring systems that can help guide clinical management. However, these scoring systems vary in specificity and sensitivity for accurately assessing the risk of appendicitis in individual patients. Ultrasound is the recommended first-line imaging modality in patients with suspected appendicitis, as it does not expose children to ionizing radiation. The rates of nondiagnostic appendix ultrasounds are around 50%, which presents a dilemma for ED clinicians. How these patients should be managed is controversial. Low-risk patients with indeterminate ultrasounds can be safely discharged home if close follow-up is ensured. Other patients may undergo a CT scan or be admitted to the hospital with surgery consult and serial abdominal examinations. ED management of children who are diagnosed with acute appendicitis should focus on pain control, IV hydration, administration of antibiotics, and consultation with a pediatric surgeon. A standardized approach to the child with suspected appendicitis would decrease resource utilization and healthcare costs. Nonoperative treatment may be an option in select children with early, uncomplicated appendicitis, but longer-term clinical outcomes from large randomized controlled trials are needed to inform decision-making.



Low-risk patients who are unlikely to have appendicitis should be discharged home without imaging.<sup>65</sup>

## Case Conclusions

*You sent a CBC and CRP for the 11-year-old boy with abdominal pain and vomiting. The WBC count and CRP were both elevated. An appendix ultrasound showed a dilated, noncompressible appendix with mesenteric fat stranding and appendiceal wall hyperemia, and you diagnosed the boy with appendicitis. The on-call pediatric surgeon was contacted and asked that you start antibiotics and admit the patient for appendectomy in the morning.*

*During a private interview with the 16-year-old girl, she confided that she had been having unprotected sexual intercourse. You sent STI testing and a urine pregnancy test. The urine pregnancy test came back positive, and the patient's abdominal pain continued to worsen during her time in the ED. A pelvic ultrasound confirmed the*

*diagnosis of ectopic pregnancy, and ob/gynecology was appropriately consulted.*

*You were able to coax the 4-year-old boy out from his hiding place with a toy. While the patient was sitting in his father's lap and being distracted by the nurse blowing bubbles, you examined the boy's abdomen. It was soft with good bowel sounds present, there was no guarding, and the patient did not seem to have pain with palpation of his abdomen. Upon further questioning, you learned that the patient had been sick with upper respiratory infection symptoms for the past week and the fever started today. The patient had a congested cough several times while you were in the exam room. You ordered a chest x-ray and diagnosed a right-sided basilar pneumonia.*

## Time- and Cost-Effective Strategies

- Workup of patients with suspected appendicitis should be standardized, with a thorough history,

## Risk Management Pitfalls in the Management of Appendicitis in Pediatric Patients (Continued on page 13)

1. **"I saw this patient in the ED 2 days ago. He presented with 2 hours of vague abdominal pain, and his exam was not consistent with acute appendicitis. I can't believe he is back today with a perforated appendix."**

Early appendicitis can present with vague abdominal pain with a broad differential diagnosis. Therefore, it can be easy to miss early appendicitis. If a patient presents to the ED with < 24 hours of abdominal pain or the diagnosis is equivocal, close follow-up with a primary care provider or ED follow-up should be ensured if the patient's symptoms persist.

2. **"The caregiver of the 3-year-old patient with a fever did not provide any history of abdominal pain. I just found out that the boy has a perforated appendix."**

The diagnosis of acute appendicitis in preschool-aged children remains a challenge. Most of these children present with complications (perforation, abscess formation, and peritonitis). Delay in diagnosis has been attributed to nonspecific presentations, overlap of symptoms with common childhood illnesses, an inability of the child to communicate, and a difficult abdominal examination. Acute appendicitis should be considered in the nonverbal child with abdominal pain.

3. **"This patient had an ultrasound yesterday that didn't show appendicitis. He came back today with increasing abdominal pain, fever, and an ultrasound that shows a noncompressible, dilated appendix."**

Patients with an equivocal ultrasound or nonvisualized appendix on ultrasound should be either hospitalized for serial abdominal examinations and possible repeat ultrasound or have close outpatient follow-up arranged (within 24 hours). Shared decision-making between emergency clinicians and guardians should be utilized to make decisions for individual patients.

4. **"The 16-year-old girl who came in yesterday with abdominal pain had a completely visualized normal appendix on ultrasound. She came back in again today complaining of abdominal pain."**

There is a broad differential diagnosis for female patients who present with abdominal pain. Pregnancy and ovarian pathology must always be considered in female patients of childbearing age.

5. **"This child was diagnosed with acute appendicitis 10 hours ago. I don't understand why his clinical status deteriorated."**

Prolonged time to antibiotics after diagnosis of appendicitis is associated with increased risk of complications, including appendiceal perforation. However, there have been studies showing that appendectomy within 24 hours of diagnosis is not associated with increased risks of complications.

physical examination, and laboratory evaluation. The use of standardized radiology reports that include details about secondary signs of appendicitis can decrease CT use, provide guidance for clinical management, and reduce imaging costs.

- Clinical decision rules can reduce variation in care and limit the use of diagnostic imaging.
- Patients who are found to be at low risk for appendicitis can be discharged home without an ultrasound with a reliable family, clear return criteria, and outpatient follow-up ensured.

**Risk Management Caveat:** Be sure that all patients with nondiagnostic appendix ultrasounds have close follow-up (within 24 hours) if discharged home. Early appendicitis can present with vague complaints and families should be instructed about “red flag” symptoms associated with appendicitis and when to return to the ED.

Patients with persistent abdominal pain should be admitted for observation or have a CT scan to evaluate the appendix.

**Risk Management Caveat:** For patients with unreliable follow-up, persistent abdominal pain, or moderate risk scores, observation, serial examinations, diagnostic imaging, and consultation with surgery should be considered.

## References

Evidence-based medicine requires a critical appraisal of the literature based upon study methodology and number of subjects. Not all references are equally robust. The findings of a large, prospective, randomized, and blinded trial should carry more weight than a case report.

To help the reader judge the strength of each reference, pertinent information about the study, such

## Risk Management Pitfalls in the Management of Appendicitis in Pediatric Patients (Continued from page 12)

6. **“When the patient presented to the ED yesterday, I decided to discharge him home without any laboratory evaluations because I didn't think they were necessary. He came back today and was diagnosed with appendicitis.”**

A CBC can be useful in patients with suspected appendicitis. A WBC count > 10,000 cells/mcL and an ANC > 7000 cells/mcL are suggestive of acute appendicitis in the appropriate clinical context. Clinical decision rules utilize WBC count and ANC to predict the risk of appendicitis and can provide emergency clinicians with guidance on clinical management.

7. **“The 7-year-old boy complaining of abdominal pain did not have significant abdominal tenderness when I examined him 2 hours ago. He represented to the ED and another provider documented an abnormal genitourinary exam and a diagnosis of testicular torsion confirmed by ultrasound.”**

Testicular pathology (eg, obstructed inguinal hernia or testicular torsion) can present as abdominal pain and should be considered in all male patients presenting with abdominal pain. Patients may be hesitant to disclose testicular pain. A genitourinary examination should be performed on all male patients who present to the ED with abdominal pain.

8. **“This 3-year-old boy seemed to have abdominal pain on exam, but he had a normal appendix ultrasound. He re-presented to the ED 2 days later with a large right-sided basilar pneumonia.”**

The preverbal child can be difficult to examine in the ED. Even though it is true that children aged < 5 years with appendicitis often present with a perforated appendix, other diagnoses are much more common in this age group and should be considered. Failing to consider a broad differential may result in missed pathology.

9. **“I decided to withhold morphine from my 8-year-old patient with suspected appendicitis. I didn't want to miss a diagnosis because I administered an analgesic.”**

Early analgesia is recommended. There is no increase in missed appendicitis or in negative appendectomies after analgesia. Adequate pain control for patients with suspected appendicitis in the ED is imperative.

10. **“I ordered an abdomen/pelvis CT to evaluate a 5-year-old girl with suspected appendicitis, but the radiologist told me that was an inappropriate initial diagnostic imaging study.”**

CT scans expose children to ionizing radiation, which increases lifetime cancer risk. Ultrasound-first strategies have been published by the American College of Radiology and the American College of Emergency Physicians, which recommend ultrasound as the initial imaging study for the evaluation of acute appendicitis in children.

as the type of study and the number of patients in the study is included in bold type following the references, where available. The most informative references cited in this paper, as determined by the authors, are noted by an asterisk (\*) next to the number of the reference.

1. Barrett ML, Hines AL, Andrews RM. Trends in rates of perforated appendix, 2001-2010: Statistical Brief #159. Healthcare Cost and Utilization Project (HCUP) *Statistical Briefs*. Rockville (MD): Agency for Healthcare Research and Quality (US); 2006. **(Government statistical brief)**
2. Pena BM, Taylor GA, Fishman SJ, et al. Costs and effectiveness of ultrasonography and limited computed tomography for diagnosing appendicitis in children. *Pediatrics*. 2000;106(4):672-676. **(Prospective; 139 patients)**
- 3.\* Samuel M. Pediatric appendicitis score. *J Pediatr Surg*. 2002;37(6):877-881. **(Prospective; 1170 patients)**
4. Alvarado A. A practical score for the early diagnosis of acute appendicitis. *Ann Emerg Med*. 1986;15(5):557-564. **(Retrospective; 305 patients)**
5. Kharbanda AB, Vazquez-Benitez G, Ballard DW, et al. Development and validation of a novel pediatric appendicitis risk calculator (pARC). *Pediatrics*. 2018;141(4). **(Prospective; 3849 patients)**
- 6.\* Dahabreh IJ, Adam GP, Halladay CW, et al. AHRQ comparative effectiveness reviews. *Diagnosis of Right Lower Quadrant Pain and Suspected Acute Appendicitis*. Rockville (MD): Agency for Healthcare Research and Quality (US); 2015. **(Meta-analysis; 903 studies)**
7. Reynolds SL, Jaffe DM. Diagnosing abdominal pain in a pediatric emergency department. *Pediatr Emerg Care*. 1992;8(3):126-128. **(Prospective; 377 patients)**
8. Scholer SJ, Pituch K, Orr DP, et al. Clinical outcomes of children with acute abdominal pain. *Pediatrics*. 1996;98(4 Pt 1):680-685. **(Retrospective; 1141 patients)**
- 9.\* Rothrock SG, Pagane J. Acute appendicitis in children: emergency department diagnosis and management. *Ann Emerg Med*. 2000;36(1):39-51. **(Review)**
10. Almaramhy HH. Acute appendicitis in young children less than 5 years: review article. *Ital J Pediatr*. 2017;43(1):15. **(Review)**
11. Rothrock SG, Skeoch G, Rush JJ, et al. Clinical features of misdiagnosed appendicitis in children. *Ann Emerg Med*. 1991;20(1):45-50. **(Retrospective; 181 patients)**
12. Nance ML, Adamson WT, Hedrick HL. Appendicitis in the young child: a continuing diagnostic challenge. *Pediatr Emerg Care*. 2000;16(3):160-162. **(Retrospective; 132 patients)**
13. Addiss DG, Shaffer N, Fowler BS, et al. The epidemiology of appendicitis and appendectomy in the United States. *Am J Epidemiol*. 1990;132(5):910-925. **(Retrospective; 3.4 million appendectomies)**
14. Caperell K, Pitetti R, Cross KP. Race and acute abdominal pain in a pediatric emergency department. *Pediatrics*. 2013;131(6):1098-1106. **(Retrospective; 9424 patients)**
15. Wang L, Haberland C, Thurm C, et al. Health outcomes in US children with abdominal pain at major emergency departments associated with race and socioeconomic status. *PLoS One*. 2015;10(8):e0132758. **(Retrospective; 4.2 million patient encounters)**
- 16.\* Smink DS, Fishman SJ, Kleinman K, et al. Effects of race, insurance status, and hospital volume on perforated appendicitis in children. *Pediatrics*. 2005;115(4):920-925. **(Retrospective; 33,184 patients)**
17. Buschard K, Kjaeldgaard A. Investigation and analysis of the position, fixation, length and embryology of the vermiform appendix. *Acta Chir Scand*. 1973;139(3):293-298. **(Prospective; 292 patients)**
18. Guidry SP, Poole GV. The anatomy of appendicitis. *Am Surg*. 1994;60(1):68-71. **(Prospective; 100 patients)**
- 19.\* Bundy DG, Byerley JS, Liles EA, et al. Does this child have appendicitis? *JAMA*. 2007;298(4):438-451. **(Review)**
20. Guillet-Caruba C, Cheikhelard A, Guillet M, et al. Bacteriologic epidemiology and empirical treatment of pediatric complicated appendicitis. *Diagn Microbiol Infect Dis*. 2011;69(4):376-381. **(Prospective; 93 patients)**
21. Rabah R. Pathology of the appendix in children: an institutional experience and review of the literature. *Pediatr Radiol*. 2007;37(1):15-20. **(Review)**
22. Jeon HG, Ju HU, Kim GY, et al. Bacteriology and changes in antibiotic susceptibility in adults with community-acquired perforated appendicitis. *PLoS One*. 2014;9(10):e111144. **(Retrospective; 415 patients)**
23. Lamps LW. Infectious causes of appendicitis. *Infect Dis Clin North Am*. 2010;24(4):995-1018. **(Review)**
24. Connor SJ, Hanna GB, Frizelle FA. Appendiceal tumors: retrospective clinicopathologic analysis of appendiceal tumors from 7,970 appendectomies. *Dis Colon Rectum*. 1998;41(1):75-80. **(Retrospective; 7970 appendectomies)**
25. Doede T, Foss HD, Waldschmidt J. Carcinoid tumors of the appendix in children--epidemiology, clinical aspects and procedure. *Eur J Pediatr Surg*. 2000;10(6):372-377. **(Retrospective; 4747 appendectomies)**
26. Goede AC, Caplin ME, Winslet MC. Carcinoid tumour of the appendix. *Br J Surg*. 2003;90(11):1317-1322. **(Review)**
27. Kanthan R, Saxena A, Kanthan SC. Goblet cell carcinoids of the appendix: immunophenotype and ultrastructural study. *Arch Pathol Lab Med*. 2001;125(3):386-390. **(Case series; 7 cases)**
28. Galai T, Beloosesky OZ, Scolnik D, et al. Misdiagnosis of acute appendicitis in children attending the emergency department: the experience of a large, tertiary care pediatric hospital. *Eur J Pediatr Surg*. 2017;27(2):138-141. **(Retrospective; 400 patients)**
29. Alloo J, Gerstle T, Shilyansky J, et al. Appendicitis in children less than 3 years of age: a 28-year review. *Pediatr Surg Int*. 2004;19(12):777-779. **(Retrospective; 27 patients)**
30. Graham JM, Pokorny WJ, Harberg FJ. Acute appendicitis in preschool age children. *Am J Surg*. 1980;139(2):247-250. **(Retrospective; 183 patients)**
31. O'Shea JS, Bishop ME, Alario AJ, et al. Diagnosing appendicitis in children with acute abdominal pain. *Pediatr Emerg Care*. 1988;4(3):172-176. **(Prospective; 246 patients)**
32. Benabbas R, Hanna M, Shah J, et al. Diagnostic accuracy of history, physical examination, laboratory tests, and point-of-care ultrasound for pediatric acute appendicitis in the emergency department: a systematic review and meta-analysis. *Acad Emerg Med*. 2017;24(5):523-551. **(Systematic review and meta-analysis; 21 studies, 8605 patients)**
33. Goldman RD, Carter S, Stephens D, et al. Prospective validation of the pediatric appendicitis score. *J Pediatr*. 2008;153(2):278-282. **(Prospective; 849 patients)**
34. Schneider C, Kharbanda A, Bachur R. Evaluating appendicitis scoring systems using a prospective pediatric cohort. *Ann Emerg Med*. 2007;49(6):778-784. **(Prospective; 588 patients)**
- 35.\* Ebell MH, Shinholser J. What are the most clinically useful cutoffs for the Alvarado and pediatric appendicitis scores? A systematic review. *Ann Emerg Med*. 2014;64(4):365-372.e362. **(Review article)**
36. Cotton DM, Vinson DR, Vazquez-Benitez G, et al. Validation of the pediatric appendicitis risk calculator (pARC) in a community emergency department setting. *Ann Emerg Med*. 2019. **(Prospective; 2089 patients)**



37. Bachur RG, Dayan PS, Dudley NC, et al. The influence of age on the diagnostic performance of white blood cell count and absolute neutrophil count in suspected pediatric appendicitis. *Acad Emerg Med*. 2016;23(11):1235-1242. **(Prospective; 2133 patients)**
38. Andersson RE. Meta-analysis of the clinical and laboratory diagnosis of appendicitis. *Br J Surg*. 2004;91(1):28-37. **(Meta-analysis; 24 studies)**
- 39.\* Kharbanda AB, Taylor GA, Fishman SJ, et al. A clinical decision rule to identify children at low risk for appendicitis. *Pediatrics*. 2005;116(3):709-716. **(Prospective; 601 patients)**
40. Gronroos JM, Gronroos P. Leucocyte count and C-reactive protein in the diagnosis of acute appendicitis. *Br J Surg*. 1999;86(4):501-504. **(Retrospective; 300 patients)**
41. Yang HR, Wang YC, Chung PK, et al. Laboratory tests in patients with acute appendicitis. *ANZ J Surg*. 2006;76(1-2):71-74. **(Retrospective; 897 patients)**
42. Beltran MA, Almonacid J, Vicencio A, et al. Predictive value of white blood cell count and C-reactive protein in children with appendicitis. *J Pediatr Surg*. 2007;42(7):1208-1214. **(Retrospective; 198 patients)**
43. Anandalwar SP, Callahan MJ, Bachur RG, et al. Use of white blood cell count and polymorphonuclear leukocyte differential to improve the predictive value of ultrasound for suspected appendicitis in children. *J Am Coll Surg*. 2015;220(6):1010-1017. **(Retrospective; 845 patients)**
44. Kim HC, Yang DM, Lee CM, et al. Acute appendicitis: relationships between CT-determined severities and serum white blood cell counts and C-reactive protein levels. *Br J Radiol*. 2011;84(1008):1115-1120. **(Retrospective; 128 patients)**
45. Yu CW, Juan LI, Wu MH, et al. Systematic review and meta-analysis of the diagnostic accuracy of procalcitonin, C-reactive protein and white blood cell count for suspected acute appendicitis. *Br J Surg*. 2013;100(3):322-329. **(Review)**
46. Campbell JP, Gunn AA. Plain abdominal radiographs and acute abdominal pain. *Br J Surg*. 1988;75(6):554-556. **(Retrospective; 5080 patients)**
47. Pezone I, Iezzi ML, Leone S. Retrocardiac pneumonia mimicking acute abdomen: a diagnostic challenge. *Pediatr Emerg Care*. 2012;28(11):1230-1231. **(Case report)**
48. Knight PJ, Vassy LE. Specific diseases mimicking appendicitis in childhood. *Arch Surg*. 1981;116(6):744-746. **(Retrospective; 1039 patients)**
49. Kosloske AM, Love CL, Rohrer JE, et al. The diagnosis of appendicitis in children: outcomes of a strategy based on pediatric surgical evaluation. *Pediatrics*. 2004;113(1 Pt 1):29-34. **(Retrospective; 356 patients)**
50. Partrick DA, Janik JE, Janik JS, et al. Increased CT scan utilization does not improve the diagnostic accuracy of appendicitis in children. *J Pediatr Surg*. 2003;38(5):659-662. **(Retrospective; 616 patients)**
51. Puylaert JB. Acute appendicitis: US evaluation using graded compression. *Radiology*. 1986;158(2):355-360. **(Prospective; 60 patients)**
52. Baldisserotto M, Marchiori E. Accuracy of noncompressive sonography of children with appendicitis according to the potential positions of the appendix. *AJR Am J Roentgenol*. 2000;175(5):1387-1392. **(Prospective; 425 patients)**
53. Lee JH, Jeong YK, Hwang JC, et al. Graded compression sonography with adjuvant use of a posterior manual compression technique in the sonographic diagnosis of acute appendicitis. *AJR Am J Roentgenol*. 2002;178(4):863-868. **(Prospective; 570 patients)**
54. Doria AS, Moineddin R, Kellenberger CJ, et al. US or CT for diagnosis of appendicitis in children and adults? A meta-analysis. *Radiology*. 2006;241(1):83-94. **(Meta-analysis; 26 studies, 9356 children and 31 studies, 4341 adults)**
55. Schuh S, Man C, Cheng A, et al. Predictors of non-diagnostic ultrasound scanning in children with suspected appendicitis. *J Pediatr*. 2011;158(1):112-118. **(Prospective; 263 patients)**
56. Goldin AB, Khanna P, Thapa M, et al. Revised ultrasound criteria for appendicitis in children improve diagnostic accuracy. *Pediatr Radiol*. 2011;41(8):993-999. **(Retrospective; 304 patients)**
57. Worrell JA, Drolshagen LF, Kelly TC, et al. Graded compression ultrasound in the diagnosis of appendicitis. A comparison of diagnostic criteria. *J Ultrasound Med*. 1990;9(3):145-150. **(Retrospective; 200 patients)**
58. Vignault F, Filiatrault D, Brandt ML, et al. Acute appendicitis in children: evaluation with US. *Radiology*. 1990;176(2):501-504. **(Prospective; 70 patients)**
59. Partain KN, Patel A, Travers C, et al. Secondary signs may improve the diagnostic accuracy of equivocal ultrasounds for suspected appendicitis in children. *J Pediatr Surg*. 2016;51(10):1655-1660. **(Retrospective; 825 patients)**
60. Hahn HB, Hoepner FU, Kalle T, et al. Sonography of acute appendicitis in children: 7 years experience. *Pediatr Radiol*. 1998;28(3):147-151. **(Retrospective; 3859)**
61. Wiersma F, Toorenvliet BR, Bloem JL, et al. US examination of the appendix in children with suspected appendicitis: the additional value of secondary signs. *Eur Radiol*. 2009;19(2):455-461. **(Retrospective; 212 patients)**
62. Nordin AB, Sales S, Nielsen JW, et al. Standardized ultrasound templates for diagnosing appendicitis reduce annual imaging costs. *J Surg Res*. 2018;221:77-83. **(Quality improvement)**
63. Partain KN, Patel AU, Travers C, et al. Improving ultrasound for appendicitis through standardized reporting of secondary signs. *J Pediatr Surg*. 2016. **(Quality improvement; 870 patients)**
64. Nielsen JW, Boomer L, Kurtovic K, et al. Reducing computed tomography scans for appendicitis by introduction of a standardized and validated ultrasonography report template. *J Pediatr Surg*. 2015;50(1):144-148. **(Quality improvement)**
65. Williamson K, Sherman JM, Fishbein JS, et al. Outcomes for children with a nonvisualized appendix on ultrasound. *Pediatr Emerg Care*. 2018. **(Retrospective; 3245 ultrasounds)**
66. Lowe LH, Perez R Jr, Scheker LE, et al. Appendicitis and alternate diagnoses in children: findings on unenhanced limited helical CT. *Pediatr Radiol*. 2001;31(8):569-577. **(Review)**
67. Sivit CJ, Applegate KE, Stallion A, et al. Imaging evaluation of suspected appendicitis in a pediatric population: effectiveness of sonography versus CT. *AJR Am J Roentgenol*. 2000;175(4):977-980. **(Prospective; 386 patients)**
68. Kharbanda AB, Taylor GA, Bachur RG. Suspected appendicitis in children: rectal and intravenous contrast-enhanced versus intravenous contrast-enhanced CT. *Radiology*. 2007;243(2):520-526. **(Retrospective; 416 patients)**
69. Laituri CA, Fraser JD, Aguayo P, et al. The lack of efficacy for oral contrast in the diagnosis of appendicitis by computed tomography. *J Surg Res*. 2011;170(1):100-103. **(Retrospective; 1561 patients)**
70. Bachur RG, Dayan PS, Bajaj L, et al. The effect of abdominal pain duration on the accuracy of diagnostic imaging for pediatric appendicitis. *Ann Emerg Med*. 2012;60(5):582-590. **(Prospective; 1810 patients)**
71. Miglioretti DL, Johnson E, Williams A, et al. The use of computed tomography in pediatrics and the associated radiation exposure and estimated cancer risk. *JAMA Pediatr*. 2013;167(8):700-707. **(Retrospective observational; 5,857,736 child years)**
72. Yu YR, Shah SR. Can the diagnosis of appendicitis be

- made without a computed tomography scan? *Adv Surg*. 2017;51(1):11-28. **(Review)**
73. Kim JR, Suh CH, Yoon HM, et al. Performance of MRI for suspected appendicitis in pediatric patients and negative appendectomy rate: a systematic review and meta-analysis. *J Magn Reson Imaging*. 2018;47(3):767-778. **(Systematic review and meta-analysis; 13 studies, 1946 patients)**
  74. Moore MM, Kulaylat AN, Hollenbeak CS, et al. Magnetic resonance imaging in pediatric appendicitis: a systematic review. *Pediatr Radiol*. 2016;46(6):928-939. **(Systematic review)**
  75. Duke E, Kalb B, Arif-Tiwari H, et al. A systematic review and meta-analysis of diagnostic performance of MRI for evaluation of acute appendicitis. *AJR Am J Roentgenol*. 2016;206(3):508-517. **(Systematic review and meta-analysis; 30 studies, 2665 patients)**
  76. Aspelund G, Fingeret A, Gross E, et al. Ultrasonography/MRI versus CT for diagnosing appendicitis. *Pediatrics*. 2014;133(4):586-593. **(Retrospective; 662 patients)**
  77. Dibble EH, Swenson DW, Cartagena C, et al. Effectiveness of a staged US and unenhanced MR imaging algorithm in the diagnosis of pediatric appendicitis. *Radiology*. 2018;286(3):1022-1029. **(Retrospective; 1982 patients)**
  78. Flood TF, Stence NV, Maloney JA, et al. Pediatric brain: repeated exposure to linear gadolinium-based contrast material is associated with increased signal intensity at unenhanced T1-weighted MR imaging. *Radiology*. 2017;282(1):222-228. **(Retrospective; 46 patients)**
  79. Kharbanda AB, Christensen EW, Dudley NC, et al. Economic analysis of diagnostic imaging in pediatric patients with suspected appendicitis. *Acad Emerg Med*. 2018;25(7):785-794. **(Prospective; 2300 patients)**
  80. Fullerton K, Depinet H, Iyer S, et al. Association of hospital resources and imaging choice for appendicitis in pediatric emergency departments. *Acad Emerg Med*. 2017;24(4):400-409. **(Retrospective; 1090 patients)**
  81. Gregory S, Kuntz K, Sainfort F, et al. Cost-effectiveness of integrating a clinical decision rule and staged imaging protocol for diagnosis of appendicitis. *Value Health*. 2016;19(1):28-35. **(Conceptual model)**
  82. Green R, Bulloch B, Kabani A, et al. Early analgesia for children with acute abdominal pain. *Pediatrics*. 2005;116(4):978-983. **(Prospective randomized controlled; 108 patients)**
  83. Poonai N, Paskar D, Konrad SL, et al. Opioid analgesia for acute abdominal pain in children: a systematic review and meta-analysis. *Acad Emerg Med*. 2014;21(11):1183-1192. **(Systematic review and meta-analysis; 342 patients)**
  84. Robb AL, Ali S, Poonai N, et al. Pain management of acute appendicitis in Canadian pediatric emergency departments. *Cjem*. 2017;19(6):417-423. **(Retrospective; 619 patients)**
  85. Solomkin JS, Mazuski JE, Bradley JS, et al. Diagnosis and management of complicated intra-abdominal infection in adults and children: guidelines by the Surgical Infection Society and the Infectious Diseases Society of America. *Surg Infect (Larchmt)*. 2010;11(1):79-109. **(Executive summary of guidelines)**
  86. Bhangu A. Safety of short, in-hospital delays before surgery for acute appendicitis: multicentre cohort study, systematic review, and meta-analysis. *Ann Surg*. 2014;259(5):894-903. **(Review)**
  87. Cameron DB, Williams R, Geng Y, et al. Time to appendectomy for acute appendicitis: a systematic review. *J Pediatr Surg*. 2018;53(3):396-405. **(Review)**
  88. Stevenson MD, Dayan PS, Dudley NC, et al. Time from emergency department evaluation to operation and appendiceal perforation. *Pediatrics*. 2017;139(6). **(Prospective; 955 patients)**
  89. Bachur RG, Lipsett SC, Monuteaux MC. Outcomes of nonoperative management of uncomplicated appendicitis. *Pediatrics*. 2017;140(1):e20170048. **(Retrospective; 99,001 patients)**
  90. Mourad J, Elliott JP, Erickson L, et al. Appendicitis in pregnancy: new information that contradicts long-held clinical beliefs. *Am J Obstet Gynecol*. 2000;182(5):1027-1029. **(Retrospective; 66,993 deliveries)**
  91. Richards C, Daya S. Diagnosis of acute appendicitis in pregnancy. *Can J Surg*. 1989;32(5):358-360. **(Case control; 28 patients)**
  92. Barloon TJ, Brown BP, Abu-Yousef MM, et al. Sonography of acute appendicitis in pregnancy. *Abdom Imaging*. 1995;20(2):149-151. **(Case series; 22 sonograms)**
  93. Kanal E, Barkovich AJ, Bell C, et al. ACR guidance document for safe MR practices: 2007. *AJR Am J Roentgenol*. 2007;188(6):1447-1474. **(Clinical guidelines)**
  94. Theilen LH, Mellnick VM, Longman RE, et al. Utility of magnetic resonance imaging for suspected appendicitis in pregnant women. *Am J Obstet Gynecol*. 2015;212(3):345.e341-346. **(Retrospective; 171 patients)**
  95. Bickell NA, Aufses AH Jr, Rojas M, et al. How time affects the risk of rupture in appendicitis. *J Am Coll Surg*. 2006;202(3):401-406. **(Retrospective; 219 patients)**
  96. Yilmaz HG, Akgun Y, Bac B, et al. Acute appendicitis in pregnancy--risk factors associated with principal outcomes: a case control study. *Int J Surg*. 2007;5(3):192-197. **(Case control; 52 patients)**
  97. McGory ML, Zingmond DS, Tillou A, et al. Negative appendectomy in pregnant women is associated with a substantial risk of fetal loss. *J Am Coll Surg*. 2007;205(4):534-540. **(Retrospective; 94,789 patients)**
  98. Huang L, Yin Y, Yang L, et al. Comparison of antibiotic therapy and appendectomy for acute uncomplicated appendicitis in children: a meta-analysis. *JAMA Pediatr*. 2017;171(5):426-434. **(Meta-analysis; 404 patients)**
  99. Georgiou R, Eaton S, Stanton MP, et al. Efficacy and safety of nonoperative treatment for acute appendicitis: a meta-analysis. *Pediatrics*. 2017;139(3):e20163003. **(Meta-analysis; 413 patients)**
  100. Hall NJ, Eaton S, Abbo O, et al. Appendectomy versus nonoperative treatment for acute uncomplicated appendicitis in children: study protocol for a multicentre, open-label, non-inferiority, randomised controlled trial. *BMJ Paediatr Open*. 2017;1(1):bmjpo-2017-000028. **(Randomized controlled trial; 978 planned patients)**
  101. Wesson DE BM. Acute appendicitis in children: management. *UpToDate*. Accessed August 15, 2019. **(Review)**

## CME Questions



Take This Test Online!

Current subscribers receive CME credit absolutely free by completing the following test. Each issue includes 4 AMA PRA Category 1 Credits™, 4 ACEP Category I credits, 4 AAP Prescribed credits, or 4 AOA Category 2-A or 2-B credits. Online testing is available for current and archived issues. To receive your free CME credits for this issue, scan the QR code below with your smartphone or visit [www.ebmedicine.net/P0919](http://www.ebmedicine.net/P0919).



**1. Regarding pediatric appendicitis, which of the following statements is TRUE?**

- a. Appendicitis rates are higher for nonwhite patients compared to white patients.
- b. The lifetime risk of developing appendicitis is higher for females compared to males.
- c. Rates of appendicitis are higher in the months of November, December, and January compared to other times of the year.
- d. Acute appendicitis is the most common condition requiring surgery.

**2. A 16-year-old girl presents with 12 hours of right-sided abdominal pain. Which of the following laboratory tests is absolutely essential?**

- a. C-reactive protein (CRP)
- b. Urine pregnancy test
- c. Comprehensive metabolic panel
- d. Urinalysis

**3. A 4-year-old boy presents with abdominal pain. What is the best way to evaluate this child for appendicitis?**

- a. Ask the child direct and detailed questions.
- b. Perform the physical examination with the caregiver out of the room.
- c. Skip the physical examination and go straight to laboratory studies because the examination is so unreliable in this age group.
- d. Use distraction techniques to evaluate the child for pain, rebound tenderness, and guarding, in addition to obtaining a detailed history from the child's caregiver.

**4. Regarding clinical scoring systems for the diagnosis and management of appendicitis, which of the following statements is TRUE?**

- a. The pediatric appendicitis score (PAS) has 100% sensitivity and 100% specificity for the diagnosis of appendicitis in children.
- b. The PAS and pediatric appendicitis risk calculator (pARC) scores utilize components of the history, physical examination findings, and laboratory results to help guide clinical management in children with suspected appendicitis.
- c. The pARC score is a simple calculation that is readily available in any setting.
- d. When using the pARC score compared to the PAS score, there are more children categorized as being at intermediate risk for appendicitis.

**5. Regarding laboratory studies in patients with suspected appendicitis, which of the following statements is TRUE?**

- a. White blood cell (WBC) count and absolute neutrophil count (ANC) have better diagnostic performance in younger children compared to adolescents.
- b. WBC count, ANC, and CRP can be increased in patients with acute appendicitis, and, in combination with ultrasound and physical examination findings, can greatly increase their predictive value in the diagnosis of appendicitis.
- c. Elevated CRP is a specific finding of appendicitis.
- d. WBC count may be more sensitive at detecting perforated appendicitis compared to CRP.

**6. What should be the FIRST radiographic test performed in a child with suspected appendicitis?**

- a. Computed tomography (CT) with contrast
- b. Abdominal x-ray
- c. Ultrasound
- d. Magnetic resonance imaging (MRI) with or without contrast

**7. In the workup of appendicitis, which of the following is a benefit of CT scan compared to ultrasound?**

- a. CT scan is generally available and not operator-dependent.
- b. Ultrasound exposes children to radiation, but CT does not.
- c. The sensitivity of CT for appendicitis improves with longer duration of abdominal pain, and ultrasound demonstrated high sensitivity regardless of pain duration.
- d. Ultrasound requires children to be sedated to complete the study, while CT does not.



8. An 8-year-old girl has been diagnosed with acute appendicitis. What intervention(s) are the best next steps in her management?
  - a. Give the patient oral antibiotics and discharge her home.
  - b. Admit the patient to the hospital for observation.
  - c. Administer pain control, consult with a member of the surgery team, keep the patient NPO, and administer IV antibiotics.
  - d. Perform a urinalysis to exclude concurrent urinary tract infection.
9. A 10-year-old boy has been diagnosed with perforated appendicitis. He has no medication allergies. Which antibiotic(s) should you administer?
  - a. Gentamicin IV
  - b. Ciprofloxacin IV and metronidazole IV
  - c. Meropenem IV
  - d. Ceftriaxone IV and metronidazole IV

10. Regarding nonoperative management of appendicitis, which of the following statements is TRUE?
  - a. Nonoperative management for appendicitis may be feasible. However, the failure rate is higher compared to appendectomy, and large randomized controlled trials are needed to inform decision-making.
  - b. Nonoperative management may be safe for younger children who cannot describe their symptoms.
  - c. Nonoperative treatment may be appropriate for children in whom appendiceal rupture is suspected.
  - d. Nonoperative management and appendectomy are equally effective treatment options for early appendicitis.

# Download Your Pediatric Pathways Now!

The algorithms included in *Pediatric Pathways: Evidence-Based Algorithms To Improve Quality Of Care, Volume II* provides you with a quick reference and step-by-step guide to common problems you face daily when managing pediatric patients. In addition, this compilation includes management pearls, an overview of guidelines, as well as disposition recommendations for each of the topics covered.

Included with this pathway compilation:

1. 12 pages of evidence-based content
2. 6 clinical pathways
3. Information to help you keep up with current guidelines and best practices
4. Treatment recommendations to help you determine the critical actions required when caring for pediatric patients
5. A quick reference to management of blunt chest trauma, urinary tract infections, neonatal vomiting, skin and soft-tissue infections, and inhaled foreign bodies

Visit [www.ebmedicine.net/NJBXH](http://www.ebmedicine.net/NJBXH) or call 1-800-249-5770 for more information.



**\$69**



# EXTRA!

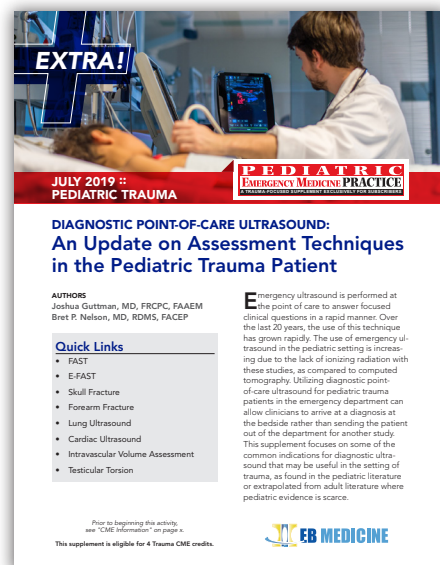
# Your subscription just got bigger and better

*EXTRAS* are here, offering a whole new way to improve care

At EB Medicine, we know a little bit extra is definitely a good thing, which is why we're excited about our all-new trauma and pharmacology *EXTRAS* giving you the CME you need plus a whole new experience to help you improve care.

In addition to your regular *Pediatric Emergency Medicine Practice* issues, you'll now get up to 4 *EXTRAS* each year **at no additional cost**. These *EXTRAS* offer a new digital-first design that takes full advantage of your favorite device. Enhanced features like video and full-color images will make it easier than ever to get the practical recommendations you need to improve care.

Visit [www.ebmedicine.net/EXTRA2](http://www.ebmedicine.net/EXTRA2) now to experience the first exciting edition.



4 CME credits each,  
including Trauma and  
Pharmacology



## PEDIATRIC EMERGENCY MEDICINE PRACTICE

AN EVIDENCE-BASED APPROACH TO PEDIATRIC EMERGENCY MEDICINE • EB MEDICINE.NET  
June 2019  
Volume 16, Number 6

### Anaphylaxis in Pediatric Patients: Early Recognition and Treatment Are Critical for Best Outcomes

**Abstract**  
Anaphylaxis is a time-sensitive, clinical diagnosis that is often misdiagnosed because the presenting signs and symptoms are similar to those of other disease processes. This issue reviews the current evidence-based recommendations for first- and second-line treatment, including the use of epinephrine, antihistamines, and corticosteroids. Guidance is also provided for the appropriate disposition of patients with anaphylaxis, including providing corticosteroids, monitoring for biphasic reactions, and ensuring appropriate follow-up. This issue also provides an overview of known epinephrine autoinjectors and offering training on how to use them, educating patients and families on avoidance of known allergens, and referring the patient to a specialist in allergy and immunology.

**Authors:**  
James M. Nease, MD  
Chief, Pediatric Emergency Medicine, Children's Hospital of Pittsburgh at UPMC, Pittsburgh, PA  
David A. Asch, MD  
Professor of Pediatrics, University of Michigan, Ann Arbor, MI  
Christopher J. Binkley, MD  
Professor of Pediatrics, University of Michigan, Ann Arbor, MI  
David A. Asch, MD  
Professor of Pediatrics, University of Michigan, Ann Arbor, MI  
Christopher J. Binkley, MD  
Professor of Pediatrics, University of Michigan, Ann Arbor, MI

## PEDIATRIC EMERGENCY MEDICINE PRACTICE

AN EVIDENCE-BASED APPROACH TO PEDIATRIC EMERGENCY MEDICINE • EB MEDICINE.NET  
July 2019  
Volume 16, Number 7

### Evaluation and Management of the Febrile Young Infant in the Emergency Department

**Abstract**  
Among young infants presenting with fever, untreated serious bacterial infections can have serious outcomes, so a full sepsis workup is often recommended but may not be necessary. This issue reviews the use of novel diagnostic tools such as procalcitonin, C-reactive protein, and BDNF biomarkers as well as new Pediatric Emergency Care Applied Research Network Predictive Policy to determine which febrile young infants require a full sepsis workup and to guide the management of these patients in the emergency department. The most recent literature assessing the risk of concurrent bacterial infections with urinary tract infections and the role for viral testing, specifically herpes simplex virus and enterovirus, are also reviewed.

**Authors:**  
James M. Nease, MD  
Chief, Pediatric Emergency Medicine, Children's Hospital of Pittsburgh at UPMC, Pittsburgh, PA  
David A. Asch, MD  
Professor of Pediatrics, University of Michigan, Ann Arbor, MI  
Christopher J. Binkley, MD  
Professor of Pediatrics, University of Michigan, Ann Arbor, MI  
David A. Asch, MD  
Professor of Pediatrics, University of Michigan, Ann Arbor, MI  
Christopher J. Binkley, MD  
Professor of Pediatrics, University of Michigan, Ann Arbor, MI

## In upcoming issues of Pediatric Emergency Medicine Practice....

- Bronchiolitis
- Pediatric Stroke
- Mild TBI/Concussion

## CME Information

**Date of Original Release:** September 1, 2019. Date of most recent review: August 15, 2019.  
**Termination date:** September 1, 2022.

**Accreditation:** EB Medicine is accredited by the Accreditation Council for Continuing Medical Education (ACCME) to provide continuing medical education for physicians. This activity has been planned and implemented in accordance with the accreditation requirements and policies of the ACCME.

**Credit Designation:** EB Medicine designates this enduring material for a maximum of 4 AMA PRA Category 1 Credits™. Physicians should claim only the credit commensurate with the extent of their participation in the activity.

**Specialty CME:** For more information, please call Customer Service at 1-800-249-5770.

**ACEP Accreditation:** *Pediatric Emergency Medicine Practice* is also approved by the American College of Emergency Physicians for 48 hours of ACEP Category I credit per annual subscription.

**AAP Accreditation:** This continuing medical education activity has been reviewed by the American Academy of Pediatrics and is acceptable for a maximum of 48 AAP credits per year. These credits can be applied toward the AAP CME/CPD Award available to Fellows and Candidate Fellows of the American Academy of Pediatrics.

**AOA Accreditation:** *Pediatric Emergency Medicine Practice* is eligible for up to 48 American Osteopathic Association Category 2-A or 2-B credit hours per year.

**Needs Assessment:** The need for this educational activity was determined by a survey of medical staff, including the editorial board of this publication; review of morbidity and mortality data from the CDC, AHA, NCHS, and ACEP; and evaluation of prior activities for emergency physicians.

**Target Audience:** This enduring material is designed for emergency medicine physicians, physician assistants, nurse practitioners, and residents.

**Goals:** Upon completion of this activity, you should be able to: (1) demonstrate medical decision-making based on the strongest clinical evidence; (2) cost-effectively diagnose and treat the most critical ED presentations; and (3) describe the most common medicolegal pitfalls for each topic covered.

**CME Objectives:** Upon completion of this activity, you should be able to: (1) obtain essential components of the history and physical examination to accurately diagnose appendicitis in the pediatric population; (2) discuss clinical decision rules that can help guide clinical management; (3) identify appropriate diagnostic laboratory evaluations and imaging studies for the workup of patients with acute appendicitis; and (4) determine appropriate treatment options for appendicitis (operative vs nonoperative management).

**Discussion of Investigational Information:** As part of the journal, faculty may be presenting investigational information about pharmaceutical products that is outside Food and Drug Administration approved labeling. Information presented as part of this activity is intended solely as continuing medical education and is not intended to promote off-label use of any pharmaceutical product.

**Faculty Disclosure:** It is the policy of EB Medicine to ensure objectivity, balance, independence, transparency, and scientific rigor in all CME-sponsored educational activities. All faculty participating in the planning or implementation of a sponsored activity are expected to disclose to the audience any relevant financial relationships and to assist in resolving any conflict of interest that may arise from the relationship. Presenters must also make a meaningful disclosure to the audience of their discussions of unlabeled or unapproved drugs or devices. In compliance with all ACCME Essentials, Standards, and Guidelines, all faculty for this CME activity were asked to complete a full disclosure statement. The information received is as follows: **Dr. Becker, Dr. Kharbada, Dr. Goldman, Dr. Williamson, Dr. Mishler, Dr. Skrainka, Dr. Claudius, Dr. Horeczko, and their related parties report no significant financial interest or other relationship with the manufacturer(s) of any commercial product(s) discussed in this educational presentation.**

**Commercial Support:** This issue of *Pediatric Emergency Medicine Practice* did not receive any commercial support.

**Earning Credit: Two Convenient Methods:** (1) Go online to [www.ebmedicine.net/CME](http://www.ebmedicine.net/CME) and click on the title of this article. (2) Mail or fax the CME Answer And Evaluation Form with your June and December issues to *Pediatric Emergency Medicine Practice*.

**Hardware/Software Requirements:** You will need a Macintosh or PC with Internet capabilities to access the website.

**Additional Policies:** For additional policies, including our statement of conflict of interest, source of funding, statement of informed consent, and statement of human and animal rights, visit <http://www.ebmedicine.net/policies>.

**CEO:** Stephanie Williford **Finance & HR Manager:** Robin Wilkinson **Publisher:** Suzanne Verity  
**Director of Editorial Quality:** Dorothy Whisenhunt, MS **Senior Content Editor & CME Director:** Erica Scott  
**Content Editor:** Cheryl Belton, PhD, ELS **Editorial Project Manager:** Angie Wallace  
**Office Manager:** Kiana Collier **Account Executive:** Dana Stenzel  
**Marketing Strategist:** Anna Motuz, MBA **Database Administrator:** Jose Porras

Direct all inquiries to:

**EB Medicine**

Phone: 1-800-249-5770 or 678-366-7933

Fax: 1-770-500-1316

PO Box 1671

Williamsport, PA 17703

E-mail: [ebm@ebmedicine.net](mailto:ebm@ebmedicine.net)

Website: [ebmedicine.net](http://ebmedicine.net)

To write a letter to the editor, please email:

[iclaudiusmd@ebmedicine.net](mailto:iclaudiusmd@ebmedicine.net)

### Subscription Information

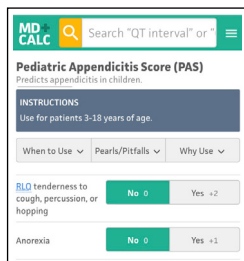
**Full annual subscription: \$449** (includes 12 monthly evidence-based print issues; 48 AMA PRA Category 1 Credits™, 48 ACEP Category I credits, 48 AAP Prescribed credits, and 48 AOA Category 2-A or 2-B CME credits; and full online access to searchable archives and additional CME). Call 1-800-249-5770 or go to [www.ebmedicine.net/subscribe](http://www.ebmedicine.net/subscribe) to subscribe.

**Individual issues: \$49** (includes 4 CME credits). Call 1-800-249-5770 or go to [www.ebmedicine.net/PEMissues](http://www.ebmedicine.net/PEMissues) to order.

**Group subscriptions at heavily discounted rates are also available.** Contact [groups@ebmedicine.net](mailto:groups@ebmedicine.net) for more information.

*Pediatric Emergency Medicine Practice* (ISSN Print: 1549-9650, ISSN Online: 1549-9669, ACID-FREE) is published monthly (12 times per year) by EB Medicine (PO Box 1671, Williamsport, PA 17703). Opinions expressed are not necessarily those of this publication. Mention of products or services does not constitute endorsement. This publication is intended as a general guide and is intended to supplement, rather than substitute, professional judgment. It covers a highly technical and complex subject and should not be used for making specific medical decisions. The materials contained herein are not intended to establish policy, procedure, or standard of care. *Pediatric Emergency Medicine Practice* is a trademark of EB Medicine. Copyright © 2019 EB Medicine All rights reserved. No part of this publication may be reproduced in any form without written consent of EB Medicine. This publication is intended for the use of the individual subscriber only, and may not be copied in whole or in part or redistributed in any way without the publisher's prior written permission – including reproduction for educational purposes or for internal distribution within a hospital, library, group practice, or other entity.





Click the thumbnail above to access the calculator.

## Pediatric Appendicitis Score (PAS)

The pediatric appendicitis score predicts the likelihood of a diagnosis of appendicitis in pediatric patients with abdominal pain.

### Points & Pearls

- The pediatric appendicitis score (PAS) predicts the likelihood of appendicitis in patients aged 3 to 18 years who present with abdominal pain with a duration of  $\leq 4$  days.
- The PAS stratifies patients as low risk, high risk, or equivocal for appendicitis.
- The score includes findings from the history, physical examination, and laboratory testing.
- The PAS should not be used in patients who have known gastrointestinal disease, are pregnant, or have had abdominal surgery previously.

### Advice

Patients who are identified as not low risk (eg, equivocal or high risk) for appendicitis by the PAS should receive nothing by mouth, and the next steps should include administration of intravenous fluids and analgesia, ordering imaging, and/or surgical consultation.

### Critical Action

Patients in the low risk group according to the PAS do not have *no* risk for appendicitis. Emergency clinicians should use clinical discretion to determine if imaging or surgical consultation would help with diagnosis for these patients.

### Evidence Appraisal

The PAS was developed in 2002 by Dr. Madan Samuel in a prospective cohort study of 1170 patients

aged 4 to 15 years who presented with abdominal pain. Clinical history, physical examination, and laboratory data for these patients were analyzed to identify 8 variables that showed statistical significance for acute appendicitis. A 10-point scoring system was created using these variables.

The PAS has been validated in multiple prospective studies. Bhatt et al (2009) studied 246 children aged 4 to 18 years and found a sensitivity of 97.6%, with a negative predictive value of 97.7%, at a cutoff PAS of  $\leq 4$  points. When a PAS of  $\geq 8$  points was used to determine that appendectomy was needed, the specificity was 95.1% and the positive predictive value was 85.2%. In this cohort, 41% of computed tomography scans would have been avoided using the PAS. Goldman et al (2008) evaluated the PAS in 849 children aged 1 to 17 years; the area under the receiver operating characteristic curve was 0.95, although the study used more conservative cutoffs of  $\leq 2$  points and  $\geq 7$  points.

Schneider et al (2007) evaluated both the PAS and the Alvarado score and found that they had similar sensitivity and specificity, but concluded that neither score was sufficient to be relied on as the only method to determine whether appendectomy is needed. Shah et al (2016) developed a diagnostic algorithm and used it prospectively in 840 patients, 267 of whom were ultimately diagnosed with appendicitis. The algorithm was found to have a sensitivity of 98.6% and specificity of 94.4%, with a decrease in utilization of computed tomography from 75.4% to 24.2%.

### Use the Calculator Now

[Click here to access the PAS on MDCalc.](#)

#### CALCULATOR REVIEW AUTHOR

#### Jamie Lovell, MD

Department of Pediatrics, Children's Hospital of Philadelphia, Philadelphia, PA

## Calculator Creator

Madan Samuel, MD

[Click here to read more about Dr. Samuel.](#)

## References

### Original/Primary Reference

- Samuel M. Pediatric appendicitis score. *J Pediatr Surg*. 2002;37(6):877-881.

DOI: <https://doi.org/10.1053/jpsu.2002.32893>

### Validation References

- Bhatt M, Joseph L, Ducharme FM, et al. Prospective validation of the pediatric appendicitis score in a Canadian pediatric emergency department. *Acad Emerg Med*. 2009;16(7):591-596.

DOI: <https://doi.org/10.1111/j.1553-2712.2009.00445.x>

- Goldman RD, Carter S, Stephens D, et al. Prospective validation of the Pediatric Appendicitis Score. *J Pediatr*. 2008;153(2):278-282.

DOI: <https://doi.org/10.1016/j.jpeds.2008.01.033>

- Schneider C, Kharbanda A, Bachur R. Evaluating appendicitis scoring systems using a prospective pediatric cohort. *Ann Emerg Med*. 2007;49(6):778-784.

DOI: <https://doi.org/10.1016/j.annemergmed.2006.12.016>

### Other Reference

- Shah SR, Sinclair KA, Theut SB, et al. Computed tomography utilization for the diagnosis of acute appendicitis in children decreases with a diagnostic algorithm. *Ann Surg*. 2016;264(3):474-481.

DOI: <https://doi.org/10.1097/SLA.0000000000001867>

## Why to Use

The PAS has been validated in multicenter studies and may be as good as clinician gestalt at identifying patients who are at low risk for appendicitis versus patients with appendicitis.

## When to Use

Use the PAS for children and adolescents who present with acute abdominal pain in whom appendicitis is suspected, especially if the pain is localized to the right lower quadrant.

## Next Steps

### Low Risk PAS (< 4 points)

- Patients with low-risk PAS scores have a low likelihood of acute appendicitis. Imaging is usually not warranted in these patients.
- There is a higher negative predictive value (95%) with the absence of right lower quadrant pain, the absence of pain with walking, jumping, or coughing, and an ANC of < 6750 cells/mcL.
- Other causes of acute abdominal pain should be considered in patients with low-risk scores.

### Equivocal PAS (4-6 points)

- Imaging can be helpful in this group of patients. Ultrasound or MRI are preferred for pediatric patients.
- Surgical consultation is warranted for patients with equivocal scores.

### High Risk PAS (≥ 7 points)

- Surgical consultation is warranted for patients with high-risk scores.
- Imaging may be pursued for this group of patients, but patients should undergo only ultrasound prior to a surgical consultation.

Abbreviations: ANC, absolute neutrophil count; MRI, magnetic resonance imaging; PAS, pediatric appendicitis score.

Copyright © MDCalc • Reprinted with permission.

Click the thumbnail above to access the calculator.

# Alvarado Score for Acute Appendicitis

The Alvarado score for acute appendicitis predicts the likelihood of a diagnosis of appendicitis.

## Points & Pearls

- The Alvarado score is more accurate at the extremes than for equivocal scores, so it is unclear whether the score is better than clinical gestalt.
- Symptoms of appendicitis may overlap with other diseases (ie, higher scores can be found in patients with nonappendiceal inflammatory conditions, such as diverticulitis or acute pelvic inflammatory disease). Therefore, it is important to consider the whole clinical picture in making the diagnosis of appendicitis.
- There are several modifications of the Alvarado score in use; these modifications may be appropriate in specific settings, such as for children, pregnant patients, or in low-resource facilities with limited or no laboratory testing capability, but the original score remains the best studied and validated in a general population.

## Critical Actions

Clinicians should use clinical judgment in nonclassic presentations of appendicitis.

## Evidence Appraisal

The Alvarado score was initially described in 1986 by Dr. Alfredo Alvarado in a retrospective study at a single center in Philadelphia. For 305 patients aged 4 to 80 years, 8 predictive factors were identified to stratify the risk of acute appendicitis. Increasing scores were found to correlate with increasing risk for appendicitis, as determined by final surgical pathology.

In 2007, McKay et al studied a retrospective cohort of 150 patients (aged  $\geq 7$  years) presenting with abdominal pain, with the aim of stratifying risk specifically for the use of computed tomography

## Why to Use

Acute appendicitis is a common surgical emergency in the United States. Diagnostic accuracy for appendicitis is increased with the use of CT scanning; however, there are risks and disadvantages associated with CT scans, including radiation exposure, contrast-related complications, and cost. The Alvarado score is a well-established and widely used clinical decision tool that may help reduce the need for CT scans when diagnosing appendicitis.

## When to Use

The Alvarado score can be used for patients with suspected acute appendicitis (typically, patients presenting with right lower quadrant pain).

## Next Steps

- Cutoffs differ by study, but one validated stratification assigns the highest risk to Alvarado scores  $\geq 9$  in men and a score of 10 in women; the lowest-risk scores were  $\leq 1$  in men and  $\leq 2$  in women (Coleman 2018).
- In patients whose score indicates high risk, treatment without obtaining CT imaging should be considered. Alternative diagnoses should be considered in patients whose score indicates low risk. In patients with equivocal scores, CT scanning should be considered to help clarify the diagnosis.

Abbreviation: CT, computed tomography.

## CALCULATOR REVIEW AUTHORS

### Ayomide Loye, MD

Department of Emergency Medicine, Philadelphia University/Thomas Jefferson University, Philadelphia, PA

### Xiao Chi Zhang, MD, MS

Department of Emergency Medicine, Philadelphia University/Thomas Jefferson University, Philadelphia, PA

(CT) scanning for diagnosis. They found 35.6% sensitivity for appendicitis based on equivocal Alvarado scores (defined as scores of 4-6) compared with 90.4% sensitivity based on CT scan in this group. They concluded that patients with equivocal scores would benefit from CT scanning.

Similarly, Coleman et al (2018) conducted a retrospective review in which the Alvarado score was applied to a cohort of 492 patients (median age, 33 years), and found that 20% of the patients



were in either the high-risk group (defined as scores  $\geq 9$  in men or a score of 10 in women) or the low-risk group (scores  $\leq 1$  in men and  $\leq 2$  in women). These patients spent a cumulative total of > 170 hours awaiting CT scanning that was ultimately unnecessary. The authors found that scores of 0 or 1 had 0% incidence of acute appendicitis and that 100% of men with a score  $\geq 9$  and 100% of women with a score of 10 had acute appendicitis confirmed on surgical pathology.

Pogorelić et al (2015) prospectively studied 311 pediatric patients and applied both the Alvarado score and the pediatric appendicitis score (Samuel 2002). Receiver operating characteristic analysis showed similar accuracy between the scores, with area under the receiver operating characteristics of 0.74 (95% confidence interval, 0.66-0.82) for the Alvarado score and 0.73 (95% confidence interval, 0.65-0.81) for the pediatric appendicitis score. The authors concluded that the scores may be useful in emergency settings, but neither score is superior to the clinical gestalt of a pediatric surgeon.

### Use the Calculator Now

[Click here to access the Alvarado score on MDCalc.](#)

### Calculator Creator

Alfredo Alvarado, MD

[Click here to read more about Dr. Alvarado.](#)

## References

### Original/Primary Reference

- Alvarado A. A practical score for the early diagnosis of acute appendicitis. *Ann Emerg Med.* 1986;15(5):557-564.  
DOI: [https://doi.org/10.1016/S0196-0644\(86\)80993-3](https://doi.org/10.1016/S0196-0644(86)80993-3)

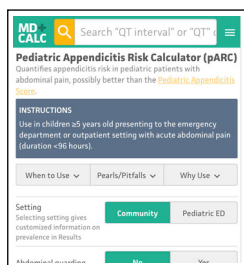
### Validation References

- Coleman JJ, Carr BW, Rogers T, et al. The Alvarado score should be used to reduce emergency department length of stay and radiation exposure in select patients with abdominal pain. *J Trauma Acute Care Surg.* 2018;84(6):946-950  
DOI: <https://doi.org/10.1097/TA.0000000000001885>
- McKay R, Shepherd J. The use of the clinical scoring system by Alvarado in the decision to perform computed tomography for acute appendicitis in the ED. *Am J Emerg Med.* 2007;25(5):489-493.  
DOI: <https://doi.org/10.1016/j.ajem.2006.08.020>
- Pogorelić Z, Rak S, Mrklić I, et al. Prospective validation of Alvarado score and Pediatric Appendicitis Score for the diagnosis of acute appendicitis in children. *Pediatr Emerg Care.* 2015;31(3):164-168.  
DOI: <https://doi.org/10.1097/PEC.0000000000000375>

### Other References

- Kalan M, Talbot D, Cunliffe WJ, et al. Evaluation of the modified Alvarado score in the diagnosis of acute appendicitis: a prospective study. *Ann R Coll Surg Engl.* 1994;76(6):418-419.  
<https://www.ncbi.nlm.nih.gov/pubmed/7702329>
- Ohle R, O'Reilly F, O'Brien KK, et al. The Alvarado score for predicting acute appendicitis: a systematic review. *BMC Med.* 2011;9:139.  
DOI: <https://doi.org/10.1186/1741-7015-9-139>
- Samuel M. Pediatric appendicitis score. *J Pediatr Surg.* 2002;37(6):872-881.  
DOI: <https://doi.org/10.1053/jpsu.2002.32893>
- Körner H, Söndena K, Söreide JA, et al. Incidence of acute nonperforated and perforated appendicitis: age-specific and sex-specific analysis. *World J Surg.* 1997;21:313-317.  
<https://www.ncbi.nlm.nih.gov/pubmed/9015177>

Copyright © MDCalc • Reprinted with permission.



Click the thumbnail above to access the calculator.

# Pediatric Appendicitis Risk Calculator (pARC)

The pediatric appendicitis risk calculator quantifies appendicitis risk in pediatric patients with abdominal pain, possibly better than the pediatric appendicitis score.

## Points & Pearls

- The patients in the pediatric appendicitis risk calculator (pARC) study were aged 5 to 18 years. Appendicitis is relatively rare in children aged < 5 years and when it does occur in that age group, it is more likely to present with atypical features not captured by the pARC.
- Cases of appendicitis among patients in the lowest-risk groups (< 5% or 5%-14% risk as determined by the pARC) were missed only 0.4% of the time in each group. The sensitivity of the pARC was 100% in patients with < 5% risk of appendicitis; the sensitivity was 97.2% in patients determined to have a 5% to 14% risk.
- The specificity of the pARC was 99.7% for patients determined to be at highest risk of appendicitis (> 85% risk) and the specificity was 97.5% for patients in the high-intermediate risk group (75%-84%).

## Critical Actions

Critically ill patients or patients with emergent "surgical abdomens" (rigidity, visible ecchymosis or hematoma, etc) should not be considered for delayed surgical consultation or imaging. These patients will likely benefit from early consultation with pediatric surgeons and from imaging, if they are able to be transported to radiology.

## Evidence Appraisal

The pARC formula was derived from a dataset of 2423 patients with an interquartile age range of 8 to 14 years. Candidate predictors with > 10% missing data were not included. Patients with certain comorbid conditions were also excluded (Kharbanda 2018).

While absolute neutrophil count (ANC) was used in the pARC formula, ANC values were missing for

## Why to Use

The pARC may help determine the need for advanced imaging such as formal ultrasound or CT scan. It can identify low-risk patients who can be observed in the ED or discharged from the ED with follow-up or return precautions. In a validation study, the pARC formula performed better than the PAS by placing fewer patients into equivocal risk categories, making the pARC potentially more useful than the PAS for aiding clinical decision-making.

## When to Use

Use the pARC in children aged ≥ 5 years who present to the ED or outpatient setting with acute abdominal pain with a duration < 96 hours. Patients with the following conditions were excluded from the pARC study:

- Pregnancy
- Previous abdominal surgery
- Inflammatory bowel disease
- Chronic pancreatitis
- Sickle cell anemia
- Cystic fibrosis
- Any medical condition affecting the ability to obtain an accurate history
- History of abdominal trauma within the previous 7 days

## Next Steps

Patients determined by the pARC to be at low risk for appendicitis can be considered candidates for safe discharge or observation in the ED without advanced imaging such as ultrasound or CT scan, based on the discretion of the emergency clinician and the comfort level of the patient's family.

Given the specificity of the pARC, patients who are classified as high or high-intermediate risk for appendicitis may not need advanced imaging. In the high-risk group, 1.2% of appendectomy specimens were negative for appendicitis on pathology analysis and in the high-intermediate risk group, 2.6% of the specimens were negative.

Abbreviations: CT, computed tomography; ED, emergency department; pARC, pediatric appendicitis risk calculator; PAS, pediatric appendicitis score.

### CALCULATOR REVIEW AUTHORS

#### Derek Tam, MD, MPH

Department of Pediatrics, Maimonides Medical Center, Brooklyn, NY

#### Hector Vazquez, MD

Department of Emergency Medicine, Maimonides Medical Center, Brooklyn, NY

216 (9%) of the patients in the derivation data set. For patients missing the ANC value, it was imputed as  $ANC = (-0.8783 + 1.1008 \times \sqrt{WBC})^2$ . For patients missing both ANC and white blood cell count values, the ANC value was imputed as  $7 \times 10^3/\text{mCL}$ , which was the mean ANC value in the derivation cohort. The proportion of missing values was less than the 10% cutoff point chosen by the study authors; however, imputation of missing values has the potential to introduce bias into the equation.

An independent validation study was conducted at different centers and demonstrated the ability of the pARC to outperform the pediatric appendicitis score (Cotton 2019). This study demonstrated a superior area under the receiver operating characteristic curve with nonoverlapping 95% confidence intervals as compared to the pediatric appendicitis score.

## Use the Calculator Now

[Click here to access the pARC rule on MDCalc.](#)

## Calculator Creator

[Click here to read more about Dr. Kharbanda.](#)

## References

### Original/Primary Reference

- Kharbanda AB, Vazquez-Benitez G, Ballard DW, et al. Development and validation of a novel pediatric appendicitis risk calculator (pARC). *Pediatrics*. 2018;141(4): e20172699.

DOI: <https://doi.org/10.1542/peds.2017-2699>

### Validation Reference

- Cotton DM, Vinson DR, Vazquez-Benitez G, et al. Validation of the pediatric appendicitis risk calculator (pARC) in a community emergency department setting. *Ann Emerg Med*. 2019. In press.

DOI: <https://doi.org/10.1016/j.annemergmed.2019.04.023>

Copyright © MDCalc • Reprinted with permission.

This edition of *Calculated Decisions*, powered by MDCalc, is published as a supplement to *Pediatric Emergency Medicine Practice* as an exclusive benefit to subscribers. *Calculated Decisions* is the result of a collaboration between EB Medicine, publisher of *Pediatric Emergency Medicine Practice*, and MD Aware, developer of MDCalc. Both companies are dedicated to providing evidence-based clinical decision-making support for emergency medicine clinicians.



#### Contact EB Medicine:

Phone: 1-800-249-5770  
or 678-366-7933  
Fax: 770-500-1316  
PO Box 1671  
Williamsport, PA 17703



#### Contact MD Aware:

MDCalc  
Phone: 646-543-8380  
12 East 20th Street  
5th Floor  
New York, NY 10003

*Pediatric Emergency Medicine Practice* (ISSN Print: 1549-9650, ISSN Online: 1549-9669, ACID-FREE) is published monthly (12 times per year) by EB Medicine (PO Box 1671, Williamsport, PA 17703-1671). Opinions expressed are not necessarily those of this publication. Mention of products or services does not constitute endorsement. This publication is intended as a general guide and is intended to supplement, rather than substitute, professional judgment. It covers a highly technical and complex subject and should not be used for making specific medical decisions. The materials contained herein are not intended to establish policy, procedure, or standard of care. Copyright © 2018 EB Medicine. All rights reserved. No part of this publication may be reproduced in any format without written consent of EB Medicine. This publication is intended for the use of the individual subscriber only and may not be copied in whole or part or redistributed in any way without the publisher's prior written permission.