


# Adaptive Enterprise solutions for SAP Netweaver and mySAP Business Suite

Peter Weiler  
Senior SAP Consultant  
HP SAP Competence Center Walldorf



© 2004 Hewlett-Packard Development Company, L.P.  
The information contained herein is subject to change without notice



## Agenda

- The Challenge
- SAP's Adaptive Enterprise Solution
- HP's Adaptive Enterprise Solution
- Summary

26/04/2005 Copyright © 2004 HP corporate presentation. All rights reserved. 2



## Challenges to your enterprise in the global competition





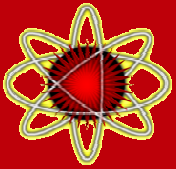
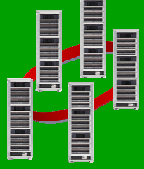
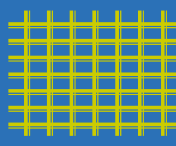
What must be adapted if you

- Introduce a new product ?
- Implement a new sales channel ?
- Establish a new partnership ?
- Open a new subsidiary ?
- Realize an aquisition, merger, split ?

**Every executive decision is an IT event!**

## Adaptive Enterprise Technology Building Blocks



<ul style="list-style-type: none"><li>- servers</li><li>- partitions</li><li>- blades</li><li>- virtual server environment</li></ul>  <p>Virtual Servers</p>	 <ul style="list-style-type: none"><li>- hubs/routers</li><li>- switches</li><li>- VLAN</li></ul> <p>Virtual Network</p>
<ul style="list-style-type: none"><li>- server</li><li>- array</li><li>- network</li></ul>  <p>Virtual Storage</p>	 <ul style="list-style-type: none"><li>- monolithic</li><li>- client/server</li><li>- web services</li><li>- OGSA</li><li>- Grid</li></ul> <p>Virtual Application</p>

26/04/2005 Copyright © 2004 HP corporate presentation. All rights reserved. 5

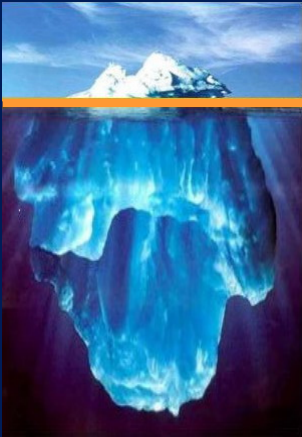

## Adaptive Enterprise Components



Technology Tools and Infrastructure

26/04/2005 Copyright © 2004 HP corporate presentation. All rights reserved. 6


# Adaptive Enterprise Components



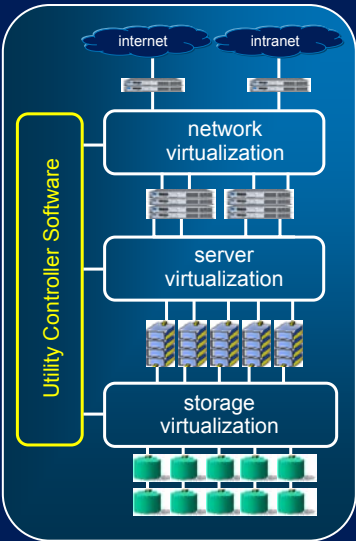

- Technology  
Tools and Infrastructure
- Process  
Definition/design, compliance and continuous improvement
- People  
Management, skills development and discipline

26/04/2005 Copyright © 2004 HP corporate presentation. All rights reserved. 7

# HP UDC, a “concept car” implementation



A complete turnkey solution consisting of virtualized pools of resources, connected by a wire-once fabric, available for instant ignition in complex multi-tier, heterogeneous architectures.



internet intranet

network virtualization

server virtualization

storage virtualization

Utility Controller Software

26/04/2005 Copyright © 2004 HP corporate presentation. All rights reserved. 8

# Der Weg zu einem Utility Data Center

Revolutionary,  
High investment cost

Evolutionary,  
High investment protection

High value

HP UDC –  
A complete turnkey solution

deliver the core capabilities of the HP UDC via a modular set of lower cost offerings that are easier for customers to deploy and integrate into their existing datacenter environments.

Servers	Storage
Network	Software

➔

Servers	Storage
Network	Software

26/04/2005 Copyright © 2004 HP corporate presentation. All rights reserved. 9

# SAP & Adaptive Computing

Business Strategy

design  
build  
integrate  
evolve  
Supply

Business Processes

mySAP Business Suite

mySAP SRM	mySAP SCM	mySAP FIN	mySAP HR	mySAP PLM	mySAP CRM
Purchase Order Mgmt		Inventory & Production		Operations	
		Corp. Services		Maintenance & Quality	
				Sales Order Mgmt	

SAP NetWeaver

Adaptive Controller Software

Virtualization

Workload Management	Partitioning	Clusters & Failovers
IT Consolidation	Hot Swaps	Multi OS
		Software Replication

Resources

Printers	ProLiant X86	Integrity IA 64	PA-RISC	Storage
Clients	Blades	Alpha	Security	Network
Mobile solutions				

Business Level

Service Level

Resource Level

HP Services

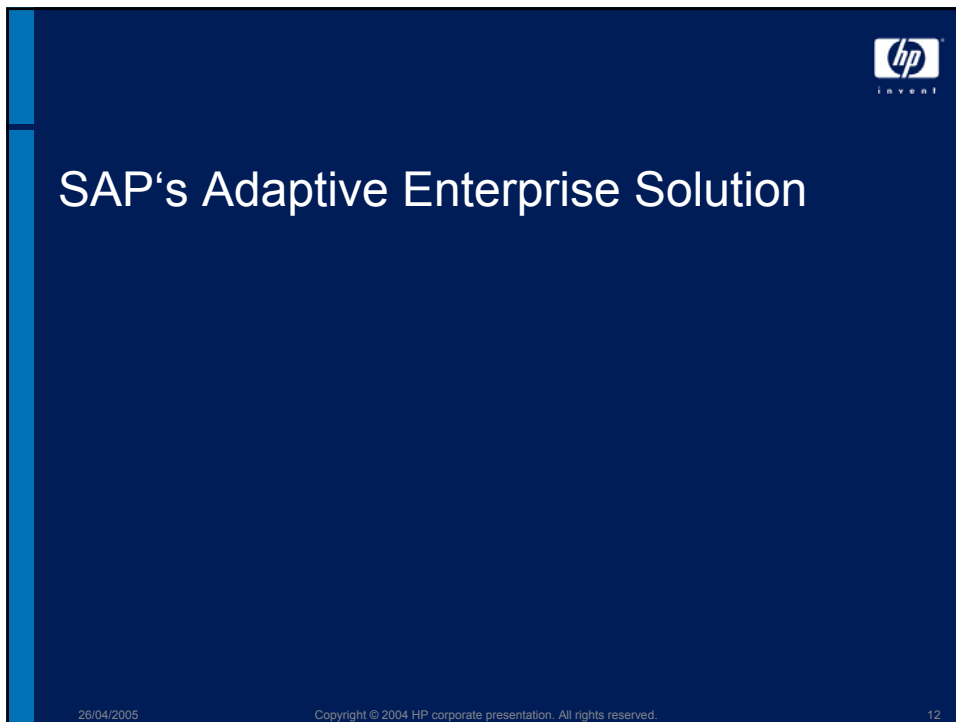
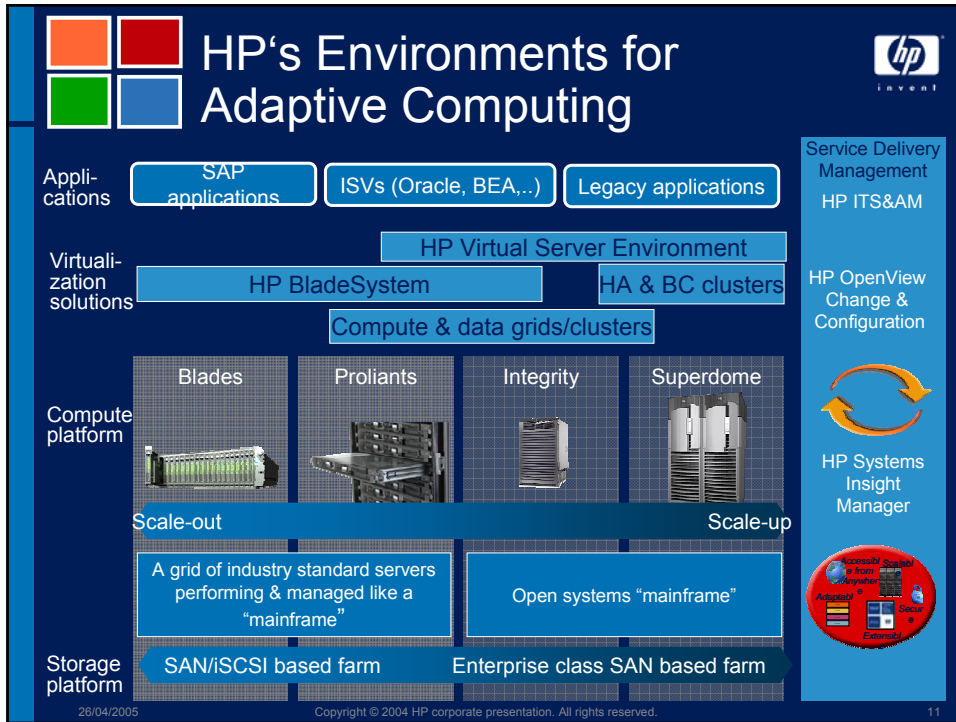
HP Adaptive Infrastructure

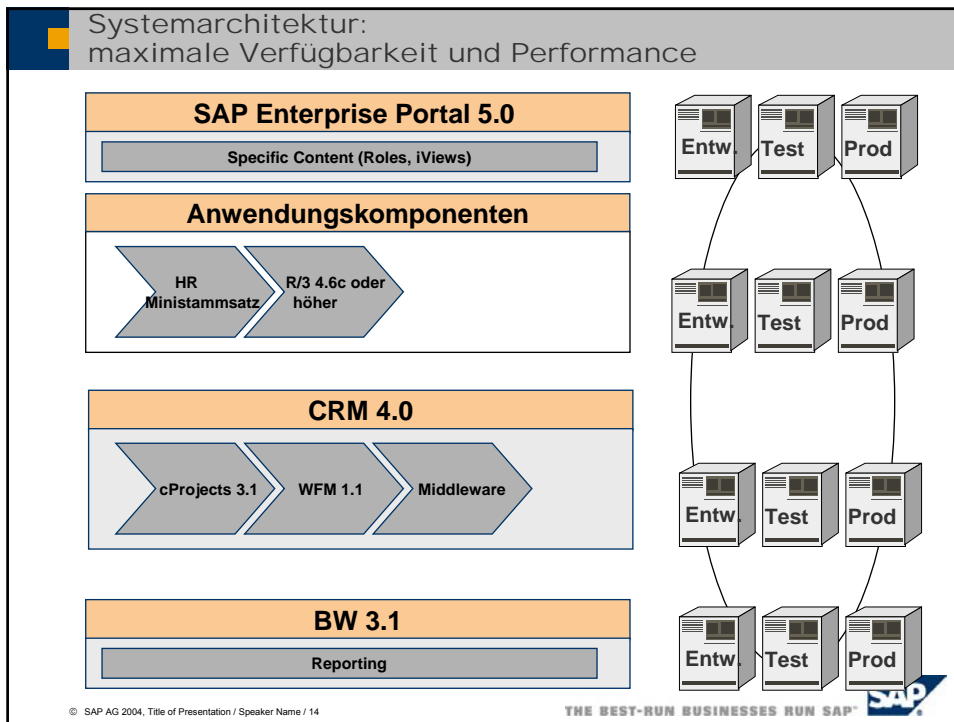
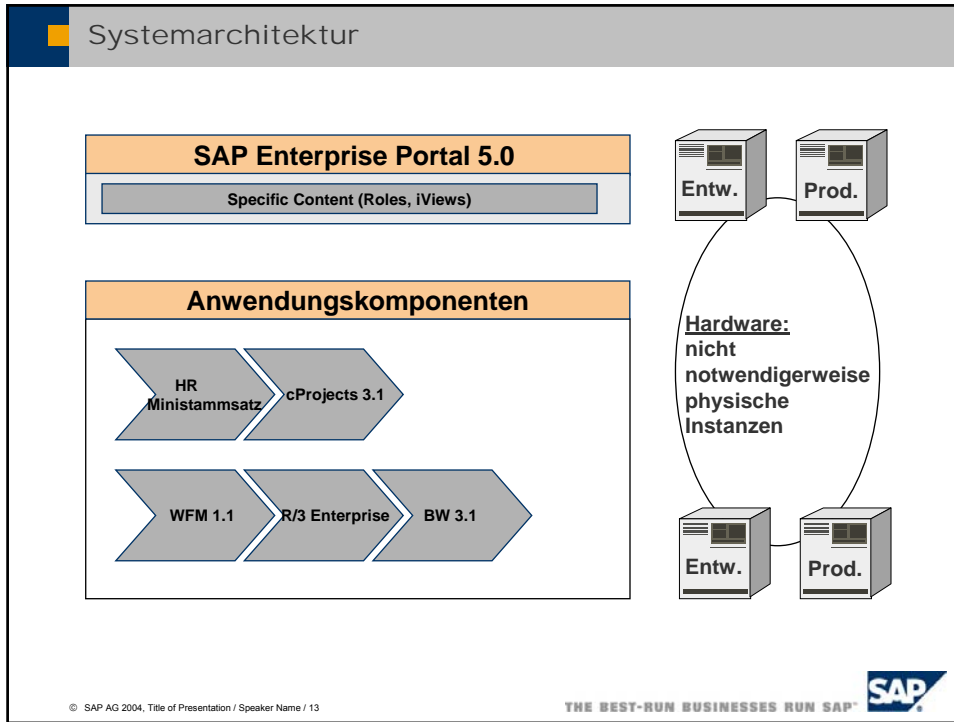
HP Adaptive Management

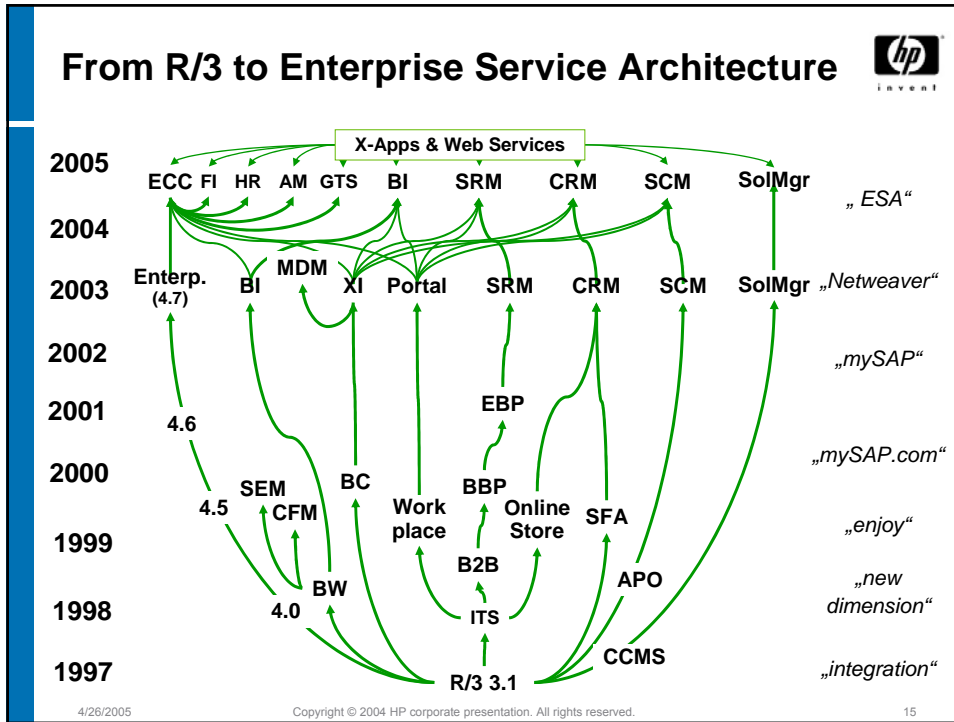
26/04/2005 Copyright © 2004 HP corporate presentation. All rights reserved. 10

www.decus.de

5





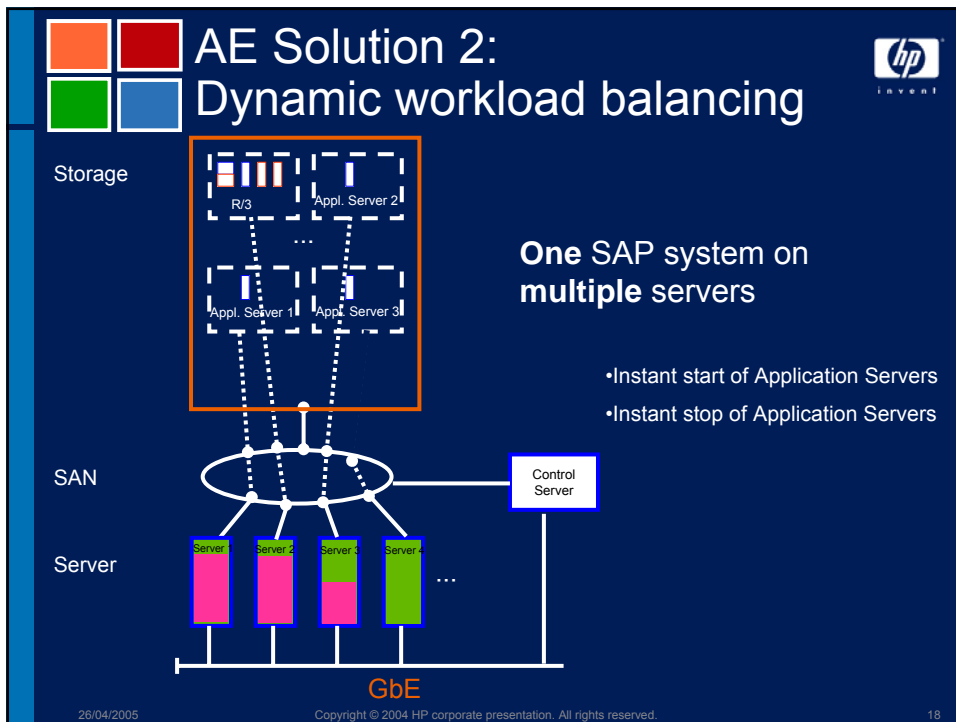
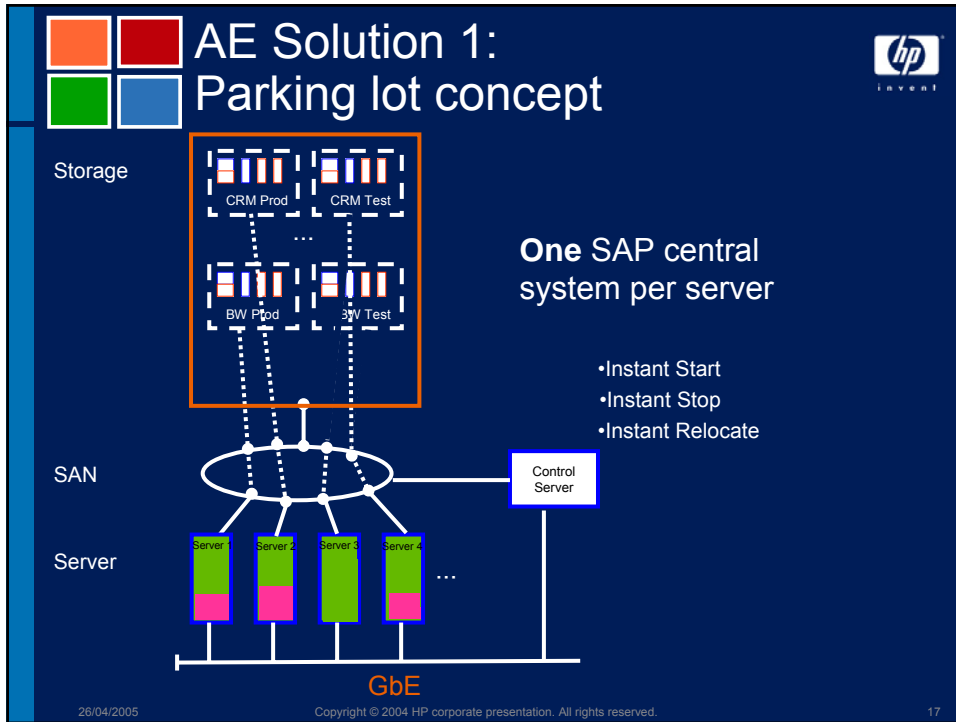



## SAP's Adaptive Enterprise Solution

- 1) Parking lot concept
- 2) Dynamic workload balancing

26/04/2005 Copyright © 2004 HP corporate presentation. All rights reserved. 16








## HP's Adaptive Enterprise Solution

- 1) Parking lot concept
- 2) Dynamic workload balancing

} SAP's Adaptive Enterprise Solution

26/04/2005 Copyright © 2004 HP corporate presentation. All rights reserved. 19

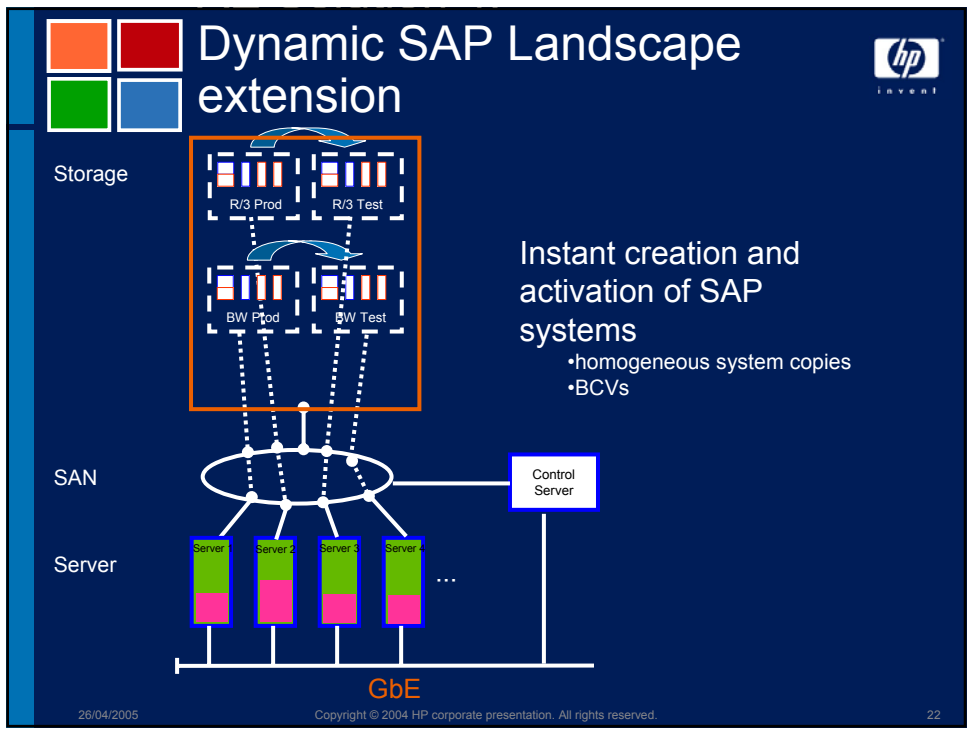
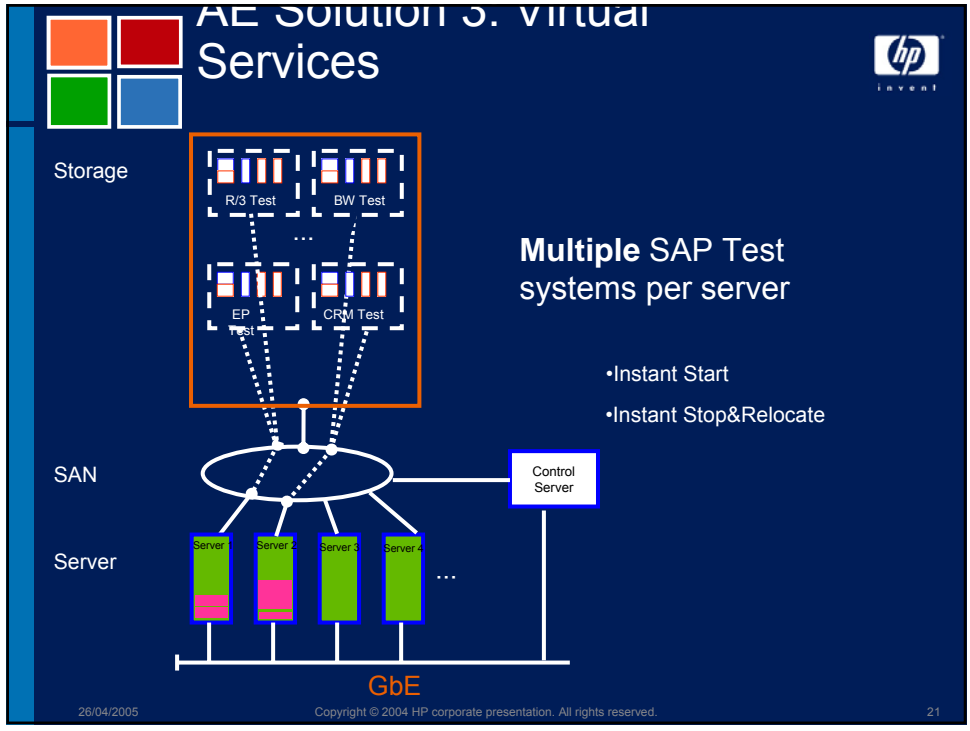


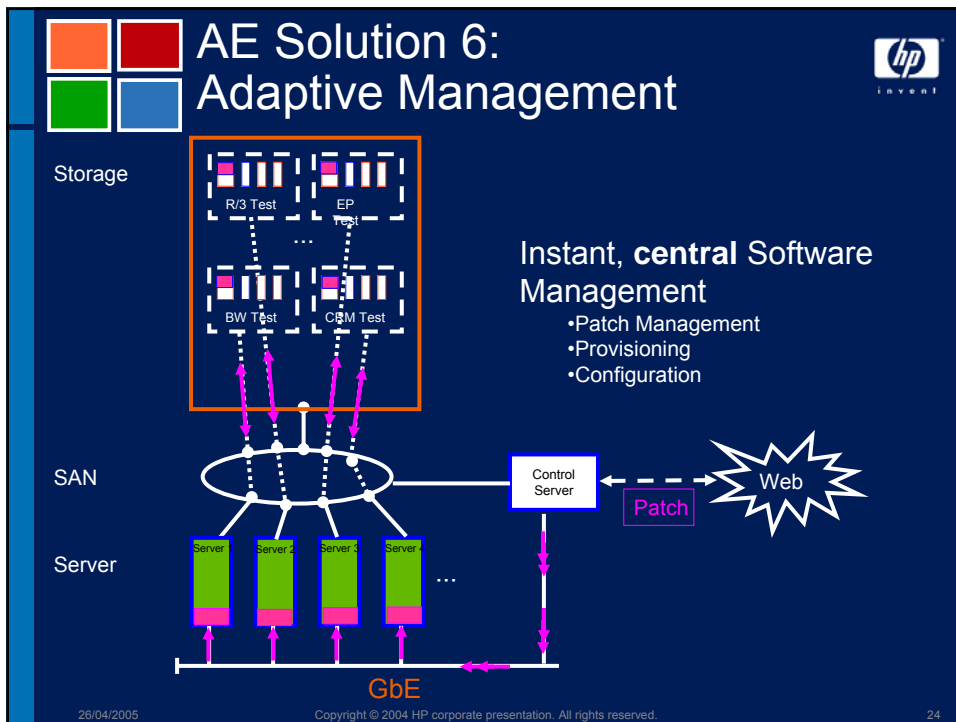
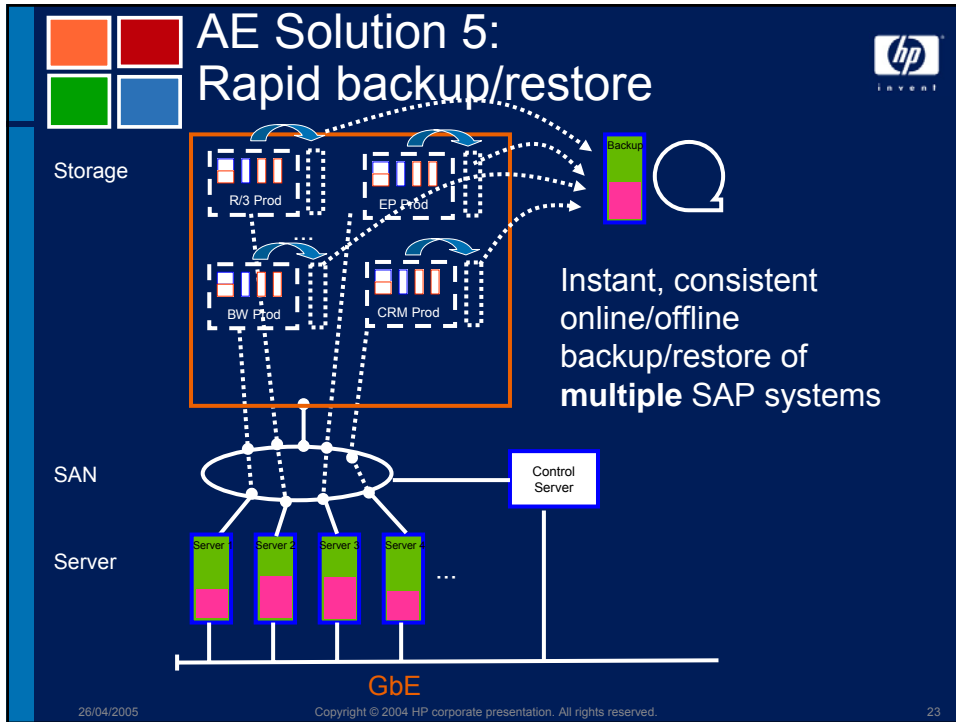
## HP's Adaptive Enterprise Solution

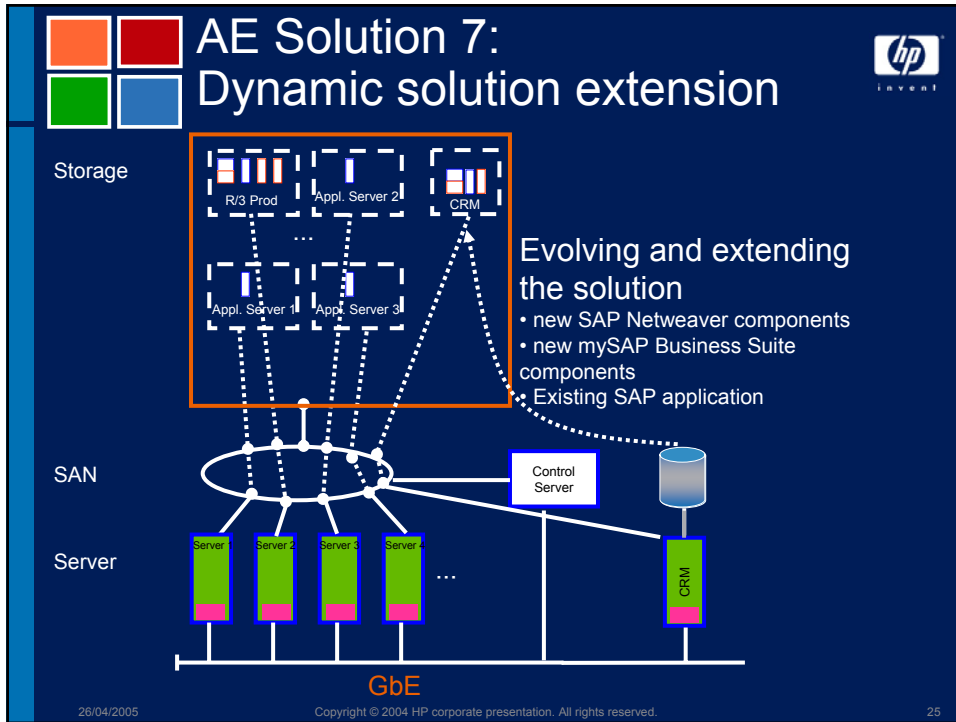
- 1) Parking lot concept
- 2) Dynamic workload balancing
- 3) Virtual services
- 4) Dynamic SAP landscape extension
- 5) Rapid backup/restore
- 6) Dynamic solution extension
- 7) Adaptive management

} SAP's Adaptive Enterprise Solution

26/04/2005 Copyright © 2004 HP corporate presentation. All rights reserved. 20







## SAP ACC Compliance Status

**HP-UX:**

**Linux:**  
nearly done, passed technological tests, documentation on-going


**Windows:**  
depends on availability of SAP ACC modules on Windows

26/04/2005    Copyright © 2004 HP corporate presentation. All rights reserved.    26




# Summary

26/04/2005 Copyright © 2004 HP corporate presentation. All rights reserved. 27




## HP's Adaptive Enterprise Solution Advantages



- ⊙ High investment protection
- ⊙ heterogeneous platform support
- ⊙ Standard SAP implementation
- ⊙ Windows and Linux solutions work on any Blade/Proliant server
- ⊙ near real-time reaction to changing business needs
- ⊙ reduction in operating time from hours/days to minutes
- ⊙ better utilization of available infrastructure resources
- ⊙ application independent
- ⊙ extensible and manageable

26/04/2005 Copyright © 2004 HP corporate presentation. All rights reserved. 28

## HP's Adaptive Enterprise Solution Value Proposition



	Quality increase	Risk mitigation	Cost decrease	Agility increase
Parking lot concept	◐	◑	●	●
Virtual services	◐	◑	●	●
Dynamic workload balancing	●	◐	◐	●
Dynamic landscape extension	●	◑	●	●
Rapid backup/restore	●	●	◐	●
Dynamic solution extension	●	◐	●	●
Adaptive management	◑	◑	◐	●

26/04/2005
Copyright © 2004 HP corporate presentation. All rights reserved.
29

