



Admissions Office

Annual Report  
July 1, 2010 to June 30, 2011

## **Table of Contents**

Mission Statement	3
Highlights	4
Year in Review	6
Appendix A: Organizational Chart	10
Appendix B: Hires and Resignations	11
Appendix C: Presentations	12
Appendix D: Committee Memberships	12
Appendix E: Strategic Plan	13
Admission Statistics	19



## **Admissions Office Mission Statement**

The University of Utah Admissions Office has the primary responsibility to accurately represent the programs, policies and identity of the University while evaluating student admissions and residency applications in a confidential, secure and service-oriented environment. Partnerships must be cultivated to help recruit and retain a student population in the quality and quantity appropriate to the mission of the University. The Admissions Office supports the effort to increase and maintain diversity within the student body.

Our mission is accomplished by:

- Determining the academic eligibility of all domestic and international undergraduate and graduate applicants.
- Evaluating, articulating and posting transfer credit and credit by examination.
- Determining students' residency status for tuition purposes.
- Notifying all applicants of their admission status in a timely manner.

## Highlights

- Processed 30,355 admissions applications for Spring, Summer and Fall 2011, a 1,878/6.6% increase over 2010. 90% were online applications. Admitted 21,006 students, a 601/2.9% increase over 2010 (see Table 1 for details).

	<b>2010</b>	<b>2011</b>
<b>Applications</b>		
Spring	4,807	5,221
Summer	2,877	2,885
Fall	20,793	22,249
<b>Total</b>	<b>28,477</b>	<b>30,355 (up 1,878/6.6%)</b>
<b>Admits</b>		
Spring	3,577	3,668
Summer	2,195	2,095
Fall	14,633	15,243
<b>Total</b>	<b>20,405</b>	<b>21,006 (up 601/2.9%)</b>
<b>Enrolled</b>		
Spring	2,285	2,440
Summer	1,373	1,243
Fall	7,768	7,953
<b>Total</b>	<b>11,426</b>	<b>11,636 (up 210/1.8%)</b>

- Fall 2010 comparison to Fall 2011.

	<b>2010</b>	<b>2011</b>
Total Applications	20,793	22,249 (up 1,456/7%)
Total Admits	14,633	15,243 (up 610/4%)
Total Enrolled	7,957	7,953 (up 4/0%)
Admit/Enrolled Yield	54%	52%

- International applications increased 754/20%, admits increased 344/19% and enrolled increased 1,172/24%, contributing to the University's goal to enhance internationalization and support the Kaplan US-Sino Pathways and Global Pathways programs.
- Analyzed the freshman admission standard to assess its predictability of first-year academic success. Resulting changes to the standard include: Re-weighted the Admission Index (AI) GPA 1.5 and ACT/SAT .75; re-anchored the AI calculation based on the Fall 2010 admitted freshman average high school GPA and ACT; and created an Admission Profile graphic, adding flexibility to adjust the admissible threshold as needed, depending on enrollment goals and quality of the applicant pool.
- Upgraded PeopleSoft (PS) Admissions module to version 9.0.
- Implemented Hobsons ApplyYourself third-party software to create a common online application for graduate student admission, which included significant business process redesign.

- Shifted freshman priority deadline from December 15 to December 1 to support earlier scholarship awarding. Shifted the residency reclassification application deadline for Spring from December 1 to November 1 and for Summer from April 15 to April 1 to facilitate timely residency reclassification notification.
- Implemented "last day to apply and complete" undergraduate degree-seeking application dates for Summer (April 15) and Fall (July 15) to better manage start of the semester workload and position students for a successful start.
- Due to application volume increases, repurposed staff, hired temporary staff and limited customer service on Wednesday mornings to maintain reasonable application turnaround times.
- Participated in enrollment management and business process consulting engagements, and began recommendation implementation including: stopped recalculating freshman high school GPA's for scholarship awarding; added a field on the online admission application to collect housing interest and updated gender variables; and implemented last dates to apply for all semester starts.
- In collaboration with the Credits and Admissions Committee, made significant progress on rewriting Policy 6-404 Undergraduate Admission. Well positioned to propose policy changes via the Institutional Policy Committee and the Academic Senate during the 2011-12 academic year.
- Successfully reclassified 17 positions: 12 data entry specialists to academic program support specialists; 1 data entry specialist to program coordinator; 1 manager to computer professional; 1 senior associate director to associate director; and upgraded the classification level of 2 associate director positions.
- Hired new staff in leadership positions: Freshman and Reception Supervisors (see Appendix A for current organizational chart).
- Managed staffing changes: See Appendix B.
- FY12 budget request was funded, adding three new positions (senior admissions counselor, computer professional and international academic program support specialist) and \$30,000 for operating expenses.
- Collaborated with University departments by providing admission training and presentations: Student Recruitment and High School Services; University Academic Advisor Committee; Utah College Advising Corps; Advising Basics; Graduate School academic departments; Study Abroad and Orientation.
- Provided state, regional and national presentations (see Appendix C) and served on University, state, regional and national committees (see Appendix D).
- Progress was made on many Admissions Strategic Plan objectives (see Appendix E).

## Year in Review

### Undergraduate Domestic Admissions

- Processed 19,472 undergraduate applications which was a 919/4.9% increase; admitted 15,982 which was a 446/2.8% increase.
- Processed 9,752 new freshman applications, a 1,061/12.2% increase; admitted 8,041, a 920/12.9% increase.
- Processed 5,293 transfer applications, a 13/0% decrease; admitted 4,064, a 241/5% decrease.
- Processed 1,483 non-matriculated (not seeking a degree) applications, which was down 1/0%.
- Implemented collecting and evaluating final high school transcripts for graduating students from Utah.
- Expanded cross-training of freshman staff to assist transfer during peak production cycles. Each staff member is trained in at least one other office area.
- Assisted in the creation of a series of high school counselor workshops sponsored by Educational Psychology and funded by a Utah System of Higher Education grant.
- Implemented referencing the National Student Clearinghouse's Student Tracker system to determine prior U.S. university or college attendance. Determined that 30% of non-traditional freshman, transfer and readmit applicants underreport prior attendance.
- Collaborated with DARS encoder to streamline transfer credit reporting in DARS.
- Collaborated with the School of Business to create a process to monitor duplicated and repeated courses before students are impacted at graduation review.
- Managed the 5% sponsorship referral process, to allow consideration of special talent and diversity (see Tables 6a through 6c for details).
- HB 144: Awarded 49 tuition waivers for Spring, Summer and Fall 2011 semesters. This waiver of non-resident tuition is granted for students who attended a UT high school for three or more years and graduated; do not hold a valid non-immigrant alien visa; and sign an affidavit that they are currently without lawful immigration status but have filed an application to legalize their immigration status. From Fall 2001 through Fall 2011, 340 students have been approved for this waiver and 284 have enrolled for their admit term. Table 13 details how students registered are progressing.
- HB 118: Awarded 19 tuition waivers for Spring, Summer and Fall 2011. This waiver of non-resident tuition is granted for students who are on a legal US visa and completed three years at and graduated from a UT high school.
- Managed the awarding process for the Border Tuition Waiver program (high schools in Evanston, Lyman and Mountain View, WY and Wendover, NV). Awarded 24 for Spring 2011 and 29 for Fall 2011.
- Managed the purge of 10,606 active paper files and 6,873 inactive paper files, for a total of 17,479 admission paper files.

## **Graduate Domestic Admissions**

- Processed 6,454 applications which was a 205/3.2% increase; admitted 2,868 which was a 189/6.1% decrease.
- Admitted 101 School of Medicine applications and 415 College of Law applications.
- Led functional components of Hobsons ApplyYourself common online graduate admission application implementation, including coordination and collaboration with over 100 graduate program departments. This project is the first step in paperless application processing, eliminating the need to scan files for departmental review and creating an electronic departmental decision-making procedure.

## **International Admissions**

- Processed 2,203 undergraduate applications which was a 653/42% increase and 2,226 graduate applications which was a 101/4.7% increase. Admitted 1,509 undergraduates for a 405/36% increase and 647 graduates for a 61/8.6% decrease.
- Admitted the second US-Sino Pathways (USPP) cohort for Fall 2011, enrolling 55 students. Participated in the second USPP consortium annual meeting to prepare for Fall 2012 processing.
- Processed an increasing number of applications for Kaplan Global Pathways. Following are the admit/enrolled ratios by semester: Spring 2011 51/35; Summer 2011 65/38 and Fall 2011 223/136. Overall, admitted 339 and 209 enrolled.
- Verified that Kaplan Global Pathways students successfully completed their year-long conditional admission program. Following are the admit to completion ratios by semester: Spring 2010 16/17 or 94%; Summer 2010 13/17 or 76.5%; and Fall 2010 40/50 or 80%.
- Researched and sought approval from the Credits and Admissions Committee to increase the International English Language Testing System (IELTS) requirement minimums from 5.0 to 6.0, starting Summer 2011. Raised the IELTS conditional admit score for Global Pathways beginning Spring 2012.

## **Information Systems**

- Coordinated the PS Admissions module upgrade to version 9.0, which included comprehensive system testing, updated training documents and end user training.
- Coordinated two upgrades to the Student and Exchange Visitor Information System (SEVIS).
- Began excepting e-transcripts via Scrip-Safe and the Army/American Council on Education Registry Transcript System (AARTS).
- Implemented updates to the online admission application to facilitate collection of preferred first name and added two gender variables, intersex and transgender. Developed the fields in the online admission application and PS to

collect housing interest, language competency and expanded parent information, with an 8/1/11 go-live.

- Led the implementation of Hobsons ApplyYourself third-party software to create a common online graduate application with an 8/1/11 go-live.
- Created 110 ad hoc queries for various campus departments.
- Assisted in Student Recruitment's CRM implementation, in particular, how CRM data is exported to PS.
- Developed updates to the PS freshman evaluation process and the online freshman Admissions Eligibility Calculator to support updates to the freshman admission standard, with an 8/1/11 go-live.

### Transfer Articulation

- Updated Utah System of Higher Education(USHE) Transfer Articulation Guides:

<b>SCHOOL</b>	<b>NUMBER OF COURSES 2010-11</b>	<b>NUMBER OF COURSES 2011-2012</b>
BYU-IDAHO	300	300
DIXIE	171	222
LDSBC	26	22
SLCC	273	265
SNOW	186	192
SUU	2270	314
USU	557	553
USU EASTERN	183	181
UVU	396	403
WEBER	473	471
WESTMINSTER	122	117

\*While not required of USHE institutions, updated 351 courses for BYU (377 for 2010-11)

<b>SCHOOL</b>	<b>NUMBER OF DEPARTMENTS WAIVING MAJOR REQUIREMENTS 2010-2011</b>	<b>NUMBER OF DEPARTMENTS WAIVING MAJOR REQUIREMENTS 2011-2012</b>
BYU	51	52
BYU-IDAHO	53	52
DIXIE	51	51
LDSBC	32	32
SLCC	57	57
SNOW	51	52
SUU	50	51
USU	51	52
USU EASTERN	50	51
UVU	55	54
WEBER	53	53
WESTMINSTER	49	50



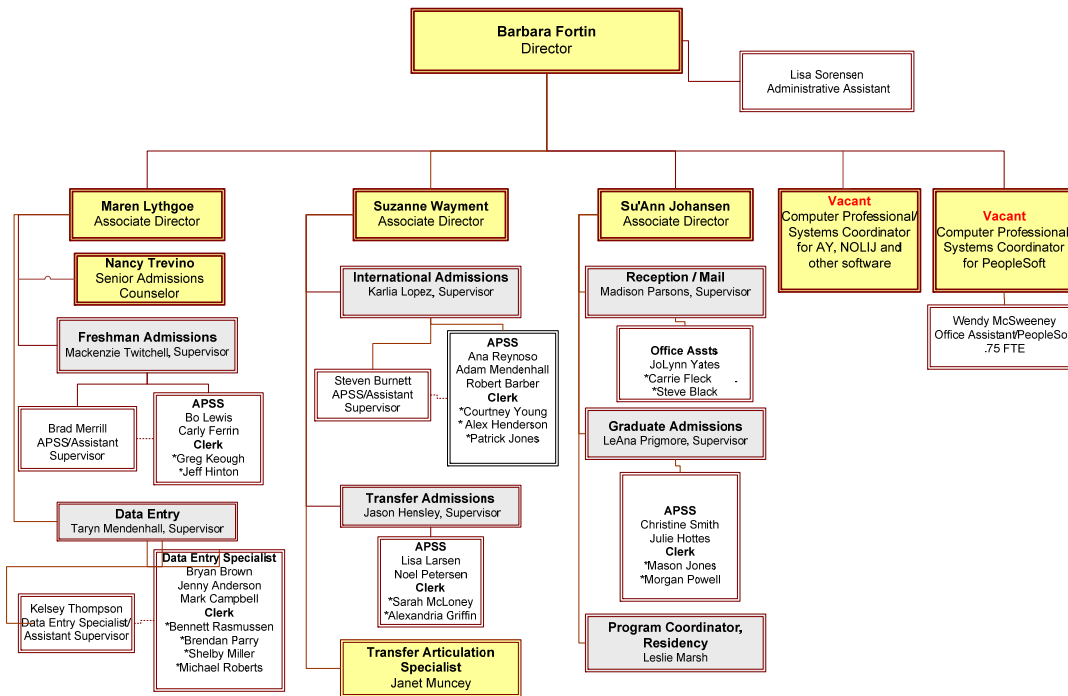
## Residency

### Resident Reclassification Applications

<u>YEAR</u>	<u>TOTAL NUMBER OF RECLASSIFICATION APPLICATIONS</u>	<u>RESIDENT (GRANTED)</u>	<u>NONRESIDENT (DENIED)</u>	<u>INCOMPLETE FILES (MISSING INFO)</u>	<u>% OF SUCCESS</u> 1) WITH INCOMPLETE FILES INCLUDED 2) COMPLETED FILES ONLY
2000	1678	1237	161	280	74% / 89%
2001	1746	1358	154	234	78% / 90%
2002	1626	1070	261	295	66% / 80%
2003	1587	1244	221	122	78% / 85%
2004	1623	1303	211	109	80% / 86%
2005	1626	1376	133	117	85% / 91%
2006	1686	1418	141	127	84% / 91%
2007	1645	1380	151	114	84% / 90%
2008	1837	1431	231	175	78% / 86%
2009	1900	1537	171	192	81% / 90%
2010	1778	1469	155	154	83% / 91%
2011	1772	1527	104	141	86% / 94%

- Implemented the new institutional policy for students admitted to Medical School as non-residents. Beginning Fall 2011, medical students may not qualify for residency reclassification.
- Utah Legislature revised state residency law, 53B-8-102 to allow dependent children of military parents to qualify for residency based on military parents maintaining Utah residency while in the military (based on their Home of Record is Utah and state of legal residence with the military is Utah for at least the past tax year).
- Completed a state mandated legislative residency audit, wherein we were found to have a 0.0% of files lacking appropriate documentation. Five of nine state schools were audited, with the percentage lacking documentation ranging from 0.0 to 23.0.

**Appendix A: Organization Chart** (\* = Part-time staff; APSS = Academic Program Support Specialist)



**Appendix B: Hires and Resignations** (\* = Part-time staff)

<b>Hired</b>	<b>Resigned</b>	<b>Internal Promotion</b>
<b>*International Clerk</b>	<b>*International Clerk</b>	
Courtney Young	Nathaniel Moore	
<b>International Academic Sup Spec</b>	<b>International Academic Sup Spec</b>	
Ana Reynoso	Suchavadee Ampaichitt	
<b>*Residency Clerk</b>		
Mason Jones		
<b>*Graduate Clerk</b>		
Morgan Powell		
Sarah Howard		
	<b>Graudate Academic Sup Spec</b>	
	Jenny Helmer	
<b>*Freshman Clerk</b>		
Jeffrey Hinton		
<b>Freshman Academic Sup Spec</b>	<b>Freshman Academic Sup Spec</b>	
Carlyle Ferrin	Jessica Prestwich	
	<b>Freshman Supervisor</b>	<b>Freshman Supervisor</b>
	Lyndi Duff	Mackenzie Twitchell
		<b>Freshman Assistant Supervisor</b>
		Bradley Merrill
	<b>Transfer Academic Sup Spec</b>	<b>Transfer Academic Sup Spec</b>
	Amy Collard	Lisa Larsen
<b>*Data Entry Clerk</b>	<b>*Data Entry Clerk</b>	
Jung Mi Lee	Minwen Gao	
Brendan Parry	Jung Mi Lee	
	<b>Data Entry Specialist</b>	
<b>Data Entry Specialist</b>	Ashley Henderson	
Jenny Anderson	Casandra Stanely	
Bryan Brown	Sarah Stringfellow	
Mark Campbell		
Kelsey Thompson	<b>Data Entry Assistant Supervisor</b>	<b>Data Entry Assistant Supervisor</b>
	Joanna Wentz	Kelsey Thompson
	Joshua Fitzgerald	
<b>*Front Desk Clerk</b>	<b>*Front Desk Clerk</b>	
Steven Black	Brigham Baker	
Mary Fleck		
<b>Front Desk Supervisor</b>	<b>Front Desk Supervisor</b>	
Madison Parsons	Marci Hennalla	

### Appendix C: Presentations

Staff	Presentation
Barbara Fortin	<i>Admissions Processing Roundtable.</i> (2010, November) PACRAO Regional Conference, Calgary.
Barbara Fortin	<i>Managing Enrollments at Urban Colleges and Universities.</i> (2011, March) AACRAO National Conference, Seattle.
Barbara Fortin	<i>The New University of Utah Admission Profile.</i> (2011, June) UACRAO State Conference, Ephraim.

### Appendix D: Committee Memberships

Name	Committee
Barbara Fortin	Credits and Admissions
	Retention and Assessment
	Student Affairs Professional Development
	Financial Aid and Scholarships
	Residency Appeals
	University Student Commission
	Commencement
	International Center Director Search
	Student (IT) Portfolio
	Enrollment Management Consulting Project Team
	State Transfer Articulation
	State Residency
	Utah ACT Council
	American Association of Collegiate Registrars and Admissions Officers: Admissions Policies and Practices
	Association of Chief Admissions Officers at Public Universities
Madison Parsons	Student Affairs Sustainability
Su'Ann Johanson	Graduate Admissions
	State Residency
	Commencement
Maren Lythgoe	College Access Network of Utah (CAN U) Steering
Janet Muncey	State Transfer Articulation
	University Academic Advisor
Nancy Trevino	Credits and Admissions
	University Academic Advisor
	Student Affairs Diversity Council
Suzanne Wayment	State Transfer Articulation
	Credits and Admissions
	Graduate Admissions
	Kaplan U.S. Sino-Pathways Admissions Lead and Leadership Teams
	Commencement

## Appendix E: Strategic Plan

### UNIVERSITY OF UTAH: STUDENT AFFAIRS STRATEGIC PLAN

#### ADMISSIONS OFFICE CONTRIBUTIONS /STRATEGIC PLAN

PROGRESS UPDATE FOR JULY 2010 TO JUNE 2011

#### VISION

Be a leading Student Affairs division.

#### MISSION

The mission of Student Affairs is to prepare students for active engagement in an increasingly diverse and global society, to foster community on campus, to provide outstanding service and to be an integral component in achieving the mission of the University.

#### VALUES

1. Student engagement
2. Professionalism
3. Commitment to diversity
4. Exemplary staff
5. Collaboration
6. Assessment, evaluation and research
7. Leading edge technology
8. Best practices

#### STRATEGIC OBJECTIVES

1. **Develop students as a whole through the cultivation and enrichment of the body, mind and spirit.**  
(Value: Student Engagement)

##### Goals and Actions relevant to Admissions:

- a. Promote experiential learning opportunities (e.g. career development, internships, mentoring programs and part-time employment).

Continue to hire, train, develop and retain staff who are also students, providing meaningful professional development through work. (Assessment: staff turnover rates [of 16 staff hired, 12 or 75% were students; 1 fewer position turned over in 10-11 vs. 09-10]; consider surveying staff to gauge effectiveness)

- b. Support global citizenship through increased collaboration with international opportunities to promote learning and offer a greater variety of programs (e.g. exchanges, internships with academic credit and service-learning opportunities).

1. Guide international students through the admission process and establish positive relationships with the university. (Assessment: application, admit and enrolled yields [international applications increased 754/20%, admits increased 344/19% and enrolled increased 1,172/24%])

2. Partner with Kaplan on the US-Sino Pathways and Global Pathways programs. (Assessment: number of enrolled students [US-Sino Pathways cohort for Fall 2011 = 55; Kaplan Global Pathways admit/enrolled ratios by semester: Spring 2011 51/35; Summer 2011 65/38 and Fall 2011 223/136. Overall, admitted 339 and 209 enrolled])
  3. Assist study-abroad students in awarding of transfer credit. (Assessment: to be developed—consider connecting with study abroad student survey [Present at pre-departure meetings and process transfer credit when a final transcript is received].)
  4. Implement SEVIS 2 to assist in managing international student status. (Assessment: successful implementation in 2013)
2. **Provide education that ensures all staff is properly trained to provide professional and competent service.** (Value: Professionalism)

Goals and Actions relevant to Admissions:

- a. Encourage and value departmental job-specific training (e.g. manuals, on-the-job training, cross training and release time to participate in professional development opportunities).

Provide timely and consistent new staff and all-staff training, using the following techniques:

1. Maintain new employee and area-specific training manuals. (Assessment: annual updates [updated all manuals and created new training manuals for PeopleSoft 9.0 upgrade; in the process of creating training documents for ApplyYourself (AY) third-party software for the graduate common online admission application]; consider surveying staff to gauge effectiveness)
  2. Conduct twice a month all-staff or unit trainings. (Assessment: training session evaluations [collected feedback from all training sessions, utilizing rating and comments for future training design])
  3. Encourage participation in Human Resource sponsored trainings and provide release time. (Assessment: number of trainings attended; sharing information with other staff)
  4. Consider what each person can do personally to provide competent service. (Assessment: to be considered [added customer service components to three all-staff training sessions; determined and reinforced appropriate phone greetings])
- b. Develop strategies for continuity planning to ensure departmental stability.

Provide cross-training and back-up planning and training to prepare for scheduled and unscheduled absences. (Assessment: Annual use of cross-training during business cycles and for absences [provided cross-training in each office unit and among units]; annual updates to training manuals [updated all training manuals]; consider surveying staff to gauge effectiveness)

- c. Establish a Student Affairs training curriculum, across all levels of staff, utilizing a variety of delivery methods (e.g. customer service, student development, diversity, cultural and professional competencies).
  1. Partner in the Student Affairs training curriculum development initiative. (Assessment: to be determined)
  2. Serve on the Professional Development Committee. (Assessment: annual participation [Barbara Fortin served on the PDC for 2010-11; Su'Ann Johansen is serving for 2011-12])
- d. Conduct annual performance reviews in all Student Affairs departments, including position-related and professional development goal setting.

Conduct annual performance reviews for all staff. (Assessment: Monitor annual completion [administrative assistant began informing supervisors of upcoming anniversary dates and reminding

them of the need to complete reviews]; consider adding a new element each year and updating the evaluation form every third year; consider surveying staff to gauge effectiveness)

3. **Promote diversity on campus through effective programming and active recruitment of staff and students.** (Value: Commitment to Diversity)

Goals and Actions relevant to Admissions:

a. Develop programs and services to make the University more accessible to underrepresented populations (e.g. work with government and community service providers to identify potential students, promote higher education and increase families' understanding of the value of higher education).

1. Continue to support the recruitment of diverse students via the 5% admission sponsorship program. (Assessment: annual number of sponsorships [283 sponsorships offered for spring, summer and fall 2011])

2. HB144 non-resident tuition waiver advising. (Assessment: annual number of waivers [49 waivers offered for spring, summer and fall 2011 new students and 42 enrolled])

3. Participation in various outreach programs (e.g. Su Banco, Utah College Advising Core, Women's Resource Center programs and Transfer Days at Salt Lake Community College). (Assessment: number of programs [participated in 4 programs in 2010-11])

b. Increase the resources available for underrepresented students (e.g. scholarships, grants and jobs).

Consider underrepresented students for staff positions. (Assessment: number of underrepresented staff [hired 4 new underrepresented staff])

4. **Recruit and retain highly qualified staff.** (Value: Exemplary Staff)

Goals and Actions relevant to Admissions:

a. Market the value of the University of Utah, in addition to salary and benefits, when recruiting staff members.

Maximize the value of University benefits (e.g. flexibility with class schedules; proximity to class locations; stable work environment; professional work experience; and typical benefits such as health insurance, retirement benefits, tuition remission, UTA pass and health and wellness offerings). (Assessment: staff turnover rates [1 fewer position turned over in 2010 vs. 2011; reclassified 17 positions to assist in reducing future turnover; continue promoting the intrinsic rewards of working at the U]; consider surveying staff to gauge effectiveness)

b. Develop consistent job descriptions, program objectives and goals within each department, focusing on specific expectations for the qualified employees hired.

Create and maintain job descriptions for each position and review annually as part of the performance review process. (Assessment: annual update of job description [continue reviewing and updating job descriptions as a component of annual reviews]; percentage of staff meeting or exceeding expectations [all staff met expectations]; consider surveying staff to gauge effectiveness)

5. **Partner with faculty, staff and external constituencies to foster student development and enhance the greater community.** (Value: Collaboration)

Goals and Actions relevant to Admissions:

a. Broaden partnerships/connections across campus to enhance co-curricular programming (e.g.

serving on committees, planning joint academic and student affairs events).

1. Continue to participate in programs which support co-curricular development including Utah Academic Advisors Committee (UAAC), Advising Basics, Parent Orientation, Graduate Admissions Training and the Kaplan programs (Global Pathways (GP) and US-Sino Pathways Program (USPP)). (Assessment: number of programs [participated in monthly UAAC meetings, 6 advising basics workshops, 10 residency parent orientations, 1 graduate admissions training workshop, bi-monthly USPP conference calls and monthly ad hoc GP meetings])

2. Provide admissions expertise to university support offices, including the Graduate School and departments, Recruitment and High School Services, Financial Aid, Athletics, Dean of Students, International Center, Transfer Center, University Information Technology (UIT) and 5% sponsors (e.g. Center for Ethnic Student Affairs, Women's Resource Center, Center for Disability Services, Educational Opportunity Programs and academic departments). (Assessment: number of programs [multiple meetings and communications with Graduate School and graduate department to coordinate the AY implementation; bi-monthly meetings with Student Recruitment staff; frequent collaboration with Financial Aid on ad hoc issues; one meeting with Athletics to explain freshman admission standard changes; multiple meetings with Dean of Student to resolve student conduct issues revealed through the admission process; close collaboration with the International Center on many aspects of the admission process and Kaplan programs administration; one presentation to Transfer Center, highlighting application and course equivalency processing; Barbara Fortin serves on UIT's Student Portfolio team; weekly collaboration with 5% sponsoring offices]; consider surveying offices to gauge effectiveness)

3. Collaborate with external constituents to assist prospective students in the admission process (e.g. high school guidance counselors, parents and International Refugee Committee).

(Assessment: number of programs [over a 100 sessions with prospective students and parents; 6 meetings with external agencies]; consider surveying constituents to gauge effectiveness)

**6. Utilize a coordinated assessment, evaluation and research approach to promote data driven decision-making.** (Value: Assessment, Evaluation and Research)

Goals and Actions relevant to Admissions:

a. All Student Affairs departments will develop a department specific strategic plan in collaboration with Assessment, Evaluation and Research (AER) to measure progress toward departmental and Student Affairs strategic objectives and learning outcomes.

b. Annual reports will be based on departmental and Student Affairs strategic plans to formally document progress toward strategic objectives.

Create a strategic plan and evaluate progress for the annual report. (Assessment: annual report completion; incremental implementation of surveys)

c. Continue to increase assessment methods utilized in Student Affairs (e.g. data-mining, tracking, benchmarking and surveys).

Develop and administer a new enrolled and no-show survey to gauge application processing efficiencies and customer service delivery. (Assessment: analysis of survey responses [created a proposal for an ELP internship to create and administer a survey—no applications])

Modify current or create new reports to include applicant and admit characteristics (e.g. residency, gpa/test scores, ethnicity and incomplete applications). (Assessment: to be determined [throughout application processing cycles provided ad hoc reports, further disseminating the applicant pool by residency, state representation, ethnicity and/or other applicant group])



7. **Provide, maintain and utilize technology to enhance student services, assessment and communication.** (Value: Leading Edge Technology)

Goals and Actions relevant to Admissions:

- a. Assure all offices have up-to-date hardware available for staff use.

Annually consider hardware needs. (Assessment: number of computers, thin clients, monitors, scanners and printers purchased [purchased 15 new computers, 4 new monitors (to provide dual monitors to more workstations) and two individual desktop printers])

- b. Provide technological support and resources to offices to implement software systems that support their area.

1. Manage the upgrade to PeopleSoft (PS) version 9.0. (Assessment: number of customizations maintained [193 customizations managed via upgrade, including 108 modifications, 56 reports and 29 web processes]; successful go-live [live on 10/10/10])

2. Consider application process re-engineering to enhance student service and leverage staff resources:

a. Partner with the Graduate School to create an online common graduate admission application. (Assessment: successful go-live [live on 8/1/11]; consider student survey to gauge effectiveness)

b. Create an online residency reclassification application with decision-making logic. (Assessment: successful go-live; consider student survey to gauge effectiveness)

c. Implement scanning application documents at the front end to facilitate workflow and online admission evaluation. (Assessment: successful go-live; consider surveying staff to gauge effectiveness)

d. Implement electronic transcripts download into PS with transfer course analysis logic. (Assessment: successful go-live; consider surveying staff to gauge effectiveness)

e. Implement SEVIS 2. (Assessment: successful go-live)

f. Implement an online transfer course summary. (Assessment: successful go-live; consider student survey to gauge effectiveness)

- c. Continually evaluate and update communication methods used within Student Affairs and with students.

Annually review all materials sent to applicants and admitted students. (Assessment: monitor annual review [updated all application processing communications sent to students, including over 50 letters, multiple postcards and emails, undergraduate admit brochure, undergraduate and graduate admission applications (online and hard copy), and residency application with supporting letters])

Maintain all web sites to ensure information is updated and student marketing oriented.

(Assessment: monitor on-going review [monthly ad hoc updates; assisted in the development of a new template for Enrollment Management web sites; developed new Admissions web site with planned go-live of 10/25/11]; consider student survey to gauge effectiveness)

8. **Promote the effective use of best practices in Student Affairs departments, programs and services.** (Value: Best Practices)

Goals and Actions relevant to Admissions:

- a. Encourage departments to utilize research and benchmarking services to evaluate their services, programs and facilities.

1. Dedicate time to ongoing review of policies and procedures. (Assessment: monitor on-going review [frequent re-engineering of processes, ranging from an individual student question generating a process shift to implementation of AY resulting in a wholesale review of every graduate admission procedure to synch with the software's functionality and integration with PS]; consider surveying staff to gauge effectiveness)
  2. Via conferences, publications, USHE and peer institution consultation and site visits, consider best practices when re-engineering policies and supporting procedures. (Assessment: to be determined [attended AACRAO, PACRAO, UACRAO, NAFSA and ACAOPU conferences to share and learn best practices])
  3. Participate in enrollment management consulting project. (Assessment: to be determined [participated in enrollment management and admissions business process consultation with AACRAO Consulting; implemented many recommended changes with plans to implement more over the next 18-24 months])
- b. Encourage all professional staff to become a member in at least one professional organization.

Support staff involvement in University committees and professional associations. (Assessment: monitor annual participation rates [see Appendix D for committee memberships])

Other Admissions Strategic Initiatives:

1. Evaluate the effectiveness of the Admissions Index (AI) for predicting student success. Consider re-engineering the AI as needed. (Assessment: to be determined [collaborated with OBIA and the Credits and Admissions Committee to create a new Admission Index and supporting Admission Profile])
2. Analyze all undergraduate (including international) admission standards for effectiveness in predicting student success. (Assessment: to be determined)
3. Update the Undergraduate Admissions Policy 6-404 and the Residency Determination for Tuition Purposes Policy 6-403. (Assessment: to be determined [collaborated with the Credits and Admissions Committee to rewrite the policy, which is ready for review by the Institutional Policy Committee and Academic Senate])
4. Assist with the implementation of the enrollment management plan. (Assessment: to be determined)

## **Admissions Statistics (Tables 1-13)**

**Table 1: Summary Comparison of Admission Counts (Spring 2011, Summer 2011 and Fall 2011)**



**UNIVERSITY OF UTAH**  
SUMMARY COMPARISON OF ADMISSION COUNTS

Page 3 of 6  
February/01/2011

UAD0019a.RPT

	Spring 2010 01/31/2010	Spring 2011 01/31/2011	DIFFERENCE
<b>Domestic</b>			
<u><b>Undergraduates</b></u>			
Total Frosh Applications	465	490	25
Total Frosh Admitted	262	288	26
Total Frosh Denied	86	75	-11
Total Frosh Enrolled	156	187	31
Total Transfer Applications	1,594	1,574	-20
Total Transfer Admitted	1,273	1,188	-85
Total Transfer Denied	86	136	50
Total Transfer Enrolled	772	754	-18
Total NonTraditional Applications	80	87	7
Total NonTraditional Admitted	45	48	3
Total NonTraditional Denied	2	9	7
Total NonTraditional Enrolled	31	34	3
Total Second Bachelor Applications	158	176	18
Total Second Bachelor Admitted	149	164	15
Total Second Bachelor Denied	0	1	1
Total Second Bachelor Enrolled	62	86	24
Total Renewal Applications	540	588	48
Total Renewal Admitted	467	488	21
Total Renewal Denied	26	40	14
Total Renewal Enrolled	332	362	30
Total Readmit Applications	252	225	-27
Total Readmit Admitted	215	178	-37
Total Readmit Denied	4	4	0
Total Readmit Enrolled	138	125	-13
Total Reactivate Applications	592	560	-32
Total Reactivate Admitted	585	549	-36
Total Reactivate Denied	0	0	0
Total Reactivate Enrolled	375	370	-5
<u>Total Undergraduate Applications</u>	3,681	3,700	19
<u>Total Undergraduate Admission</u>	2,996	2,903	-93
<u>Total Undergraduate Denials</u>	204	265	61
<u>Total Undergraduate Enrolled</u>	1,866	1,918	52
<u><b>Graduates</b></u>			
Total Grad Applications	226	307	81
Total Grad Admitted	95	128	33
Total Grad Denied	10	26	16
Total Grad Enrolled	76	94	18
Total Renewal Applications	46	43	-3
Total Renewal Admitted	25	20	-5
Total Renewal Denied	4	4	0
Total Renewal Enrolled	21	17	-4
Total Readmit Applications	273	294	21
Total Readmit Admitted	167	154	-13
Total Readmit Denied	15	29	14
Total Readmit Enrolled	154	134	-20
<u>Total Graduate Applications</u>	545	644	99
<u>Total Graduate Admission</u>	287	302	15
<u>Total Graduate Denials</u>	29	59	30
<u>Total Graduate Enrolled</u>	251	245	-6



**UNIVERSITY OF UTAH  
SUMMARY COMPARISON OF ADMISSION COUNTS**

UAD0019a.R1

	Spring 2010 01/31/2010	Spring 2011 01/31/2011	DIFFERENCE
<b>International</b>			
<u><b>Undergraduates</b></u>			
Total Frosh Applications	143	321	178
Total Frosh Admitted	73	203	130
Total Frosh Denied	5	10	5
Total Frosh Enrolled	40	123	83
Total Transfer Applications	117	211	94
Total Transfer Admitted	74	122	48
Total Transfer Denied	9	20	11
Total Transfer Enrolled	40	61	21
Total Second Bachelor Applications	27	16	-11
Total Second Bachelor Admitted	19	12	-7
Total Second Bachelor Denied	0	0	0
Total Second Bachelor Enrolled	12	6	-6
Total Renewal Applications	26	49	23
Total Renewal Admitted	20	42	22
Total Renewal Denied	0	2	2
Total Renewal Enrolled	14	27	13
Total Readmit Applications	28	19	-9
Total Readmit Admitted	27	16	-11
Total Readmit Denied	0	0	0
Total Readmit Enrolled	23	13	-10
<u>Total Undergraduate Applications</u>	<u>341</u>	<u>616</u>	<u>275</u>
<u>Total Undergraduate Admission</u>	<u>213</u>	<u>395</u>	<u>182</u>
<u>Total Undergraduate Denials</u>	<u>14</u>	<u>32</u>	<u>18</u>
<u>Total Undergraduate Enrolled</u>	<u>129</u>	<u>230</u>	<u>101</u>
<u><b>Graduates</b></u>			
Total Grad Applications	163	206	43
Total Grad Admitted	47	36	-11
Total Grad Denied	16	23	7
Total Grad Enrolled	25	21	-4
Total Renewal Applications	17	27	10
Total Renewal Admitted	9	13	4
Total Renewal Denied	1	5	4
Total Renewal Enrolled	6	10	4
Total Readmit Applications	28	28	0
Total Readmit Admitted	17	19	2
Total Readmit Denied	6	2	-4
Total Readmit Enrolled	14	16	2
<u>Total Graduate Applications</u>	<u>208</u>	<u>261</u>	<u>53</u>
<u>Total Graduate Admission</u>	<u>73</u>	<u>68</u>	<u>-5</u>
<u>Total Graduate Denials</u>	<u>23</u>	<u>30</u>	<u>7</u>
<u>Total Graduate Enrolled</u>	<u>39</u>	<u>47</u>	<u>8</u>



**UNIVERSITY OF UTAH**  
SUMMARY COMPARISON OF ADMISSION COUNTS

Page 5 of 6  
June/09/ 2011  
UAD0019a.RPT

	Summer 2010	Summer 2011	DIFFERENCE
	06/06/2010	06/06/2011	
<b>Domestic</b>			
<u><b>Undergraduates</b></u>			
Total Frosh Applications	306	308	2
Total Frosh Admitted	234	247	13
Total Frosh Denied	21	20	-1
Total Frosh Enrolled	142	128	-14
Total Transfer Applications	656	623	-33
Total Transfer Admitted	521	473	-48
Total Transfer Denied	45	49	4
Total Transfer Enrolled	273	244	-29
Total NonTraditional Applications	35	40	5
Total NonTraditional Admitted	26	14	-12
Total NonTraditional Denied	0	14	14
Total NonTraditional Enrolled	16	8	-8
Total Second Bachelor Applications	152	136	-16
Total Second Bachelor Admitted	144	128	-16
Total Second Bachelor Denied	0	0	0
Total Second Bachelor Enrolled	72	63	-9
Total Renewal Applications	225	250	25
Total Renewal Admitted	195	198	3
Total Renewal Denied	9	19	10
Total Renewal Enrolled	124	117	-7
Total Readmit Applications	149	163	14
Total Readmit Admitted	128	136	8
Total Readmit Denied	6	6	0
Total Readmit Enrolled	73	86	13
Total Reactivate Applications	382	323	-59
Total Reactivate Admitted	377	306	-71
Total Reactivate Denied	0	0	0
Total Reactivate Enrolled	216	175	-41
<u><b>Total Undergraduate Applications</b></u>	<b>1,905</b>	<b>1,843</b>	<b>-62</b>
<u><b>Total Undergraduate Admission</b></u>	<b>1,625</b>	<b>1,502</b>	<b>-123</b>
<u><b>Total Undergraduate Denials</b></u>	<b>81</b>	<b>108</b>	<b>27</b>
<u><b>Total Undergraduate Enrolled</b></u>	<b>916</b>	<b>821</b>	<b>-95</b>
<u><b>Graduates</b></u>			
Total Grad Applications	434	448	14
Total Grad Admitted	203	189	-14
Total Grad Denied	152	226	74
Total Grad Enrolled	168	138	-30
Total Renewal Applications	57	42	-15
Total Renewal Admitted	31	23	-8
Total Renewal Denied	21	17	-4
Total Renewal Enrolled	23	20	-3
Total Readmit Applications	263	214	-49
Total Readmit Admitted	191	167	-24
Total Readmit Denied	39	40	1
Total Readmit Enrolled	163	135	-28
<u><b>Total Graduate Applications</b></u>	<b>754</b>	<b>704</b>	<b>-50</b>
<u><b>Total Graduate Admission</b></u>	<b>425</b>	<b>379</b>	<b>-46</b>
<u><b>Total Graduate Denials</b></u>	<b>212</b>	<b>283</b>	<b>71</b>
<u><b>Total Graduate Enrolled</b></u>	<b>354</b>	<b>293</b>	<b>-61</b>



**UNIVERSITY OF UTAH**  
SUMMARY COMPARISON OF ADMISSION COUNTS

Page 6 of 6  
June/09/ 2011  
UAD0019a.RPT

	Summer 2010	Summer 2011	DIFFERENCE
	06/06/2010	06/06/2011	
<b>International</b>			
<u><b>Undergraduates</b></u>			
Total Frosh Applications	52	107	55
Total Frosh Admitted	36	62	26
Total Frosh Denied	1	8	7
Total Frosh Enrolled	27	30	3
Total Transfer Applications	55	75	20
Total Transfer Admitted	38	54	16
Total Transfer Denied	5	8	3
Total Transfer Enrolled	25	35	10
Total Second Bachelor Applications	7	18	11
Total Second Bachelor Admitted	6	14	8
Total Second Bachelor Denied	0	0	0
Total Second Bachelor Enrolled	2	9	7
Total Renewal Applications	17	32	15
Total Renewal Admitted	14	26	12
Total Renewal Denied	2	1	-1
Total Renewal Enrolled	12	13	1
Total Readmit Applications	19	22	3
Total Readmit Admitted	15	21	6
Total Readmit Denied	1	1	0
Total Readmit Enrolled	13	16	3
<u><b>Total Undergraduate Applications</b></u>	<b>150</b>	<b>254</b>	<b>104</b>
<u><b>Total Undergraduate Admission</b></u>	<b>109</b>	<b>177</b>	<b>68</b>
<u><b>Total Undergraduate Denials</b></u>	<b>9</b>	<b>18</b>	<b>9</b>
<u><b>Total Undergraduate Enrolled</b></u>	<b>79</b>	<b>103</b>	<b>24</b>
<u><b>Graduates</b></u>			
Total Grad Applications	42	56	14
Total Grad Admitted	20	18	-2
Total Grad Denied	6	11	5
Total Grad Enrolled	15	12	-3
Total Renewal Applications	3	7	4
Total Renewal Admitted	1	3	2
Total Renewal Denied	0	0	0
Total Renewal Enrolled	0	2	2
Total Readmit Applications	16	21	5
Total Readmit Admitted	13	16	3
Total Readmit Denied	0	4	4
Total Readmit Enrolled	9	12	3
<u><b>Total Graduate Applications</b></u>	<b>61</b>	<b>84</b>	<b>23</b>
<u><b>Total Graduate Admission</b></u>	<b>34</b>	<b>37</b>	<b>3</b>
<u><b>Total Graduate Denials</b></u>	<b>6</b>	<b>15</b>	<b>9</b>
<u><b>Total Graduate Enrolled</b></u>	<b>24</b>	<b>26</b>	<b>2</b>





**UNIVERSITY OF UTAH**  
SUMMARY COMPARISON OF ADMISSION COUNTS

UAD0019a.RPT

	Fall 2010 09/12/2010	Fall 2011 09/12/2011	DIFFERENCE
<b>Domestic</b>			
<u>Undergraduates</u>			
Total Frosh Applications	7,714	8,762	1,048
Total Frosh Admitted	6,491	7,414	923
Total Frosh Denied	652	679	27
Total Frosh Enrolled	2,611	2,828	217
Total Transfer Applications	3,054	3,096	42
Total Transfer Admitted	2,509	2,403	-106
Total Transfer Denied	158	238	80
Total Transfer Enrolled	1,507	1,509	2
Total NonTraditional Applications	95	65	-30
Total NonTraditional Admitted	67	30	-37
Total NonTraditional Denied	6	17	11
Total NonTraditional Enrolled	42	16	-26
Total Second Bachelor Applications	272	232	-40
Total Second Bachelor Admitted	256	214	-42
Total Second Bachelor Denied	0	2	2
Total Second Bachelor Enrolled	127	105	-22
Total Renewal Applications	848	872	24
Total Renewal Admitted	703	705	2
Total Renewal Denied	63	69	6
Total Renewal Enrolled	474	486	12
Total Readmit Applications	336	368	32
Total Readmit Admitted	267	305	38
Total Readmit Denied	9	23	14
Total Readmit Enrolled	198	215	17
Total Reactivate Applications	652	534	-118
Total Reactivate Admitted	625	506	-119
Total Reactivate Denied	0	0	0
Total Reactivate Enrolled	413	347	-66
<u>Total Undergraduate Applications</u>	<u>12,971</u>	<u>13,929</u>	<u>958</u>
<u>Total Undergraduate Admission</u>	<u>10,918</u>	<u>11,577</u>	<u>659</u>
<u>Total Undergraduate Denials</u>	<u>888</u>	<u>1,028</u>	<u>140</u>
<u>Total Undergraduate Enrolled</u>	<u>5,372</u>	<u>5,506</u>	<u>134</u>
<u>Graduates</u>			
Total Grad Applications	3,115	3,227	112
Total Grad Admitted	1,321	1,161	-160
Total Grad Denied	1,058	1,041	-17
Total Grad Enrolled	864	804	-60
Total Renewal Applications	319	342	23
Total Renewal Admitted	139	133	-6
Total Renewal Denied	131	119	-12
Total Renewal Enrolled	96	103	7
Total Readmit Applications	1,481	1,537	56
Total Readmit Admitted	874	893	19
Total Readmit Denied	322	342	20
Total Readmit Enrolled	744	774	30
<u>Total Graduate Applications</u>	<u>4,915</u>	<u>5,106</u>	<u>191</u>
<u>Total Graduate Admission</u>	<u>2,334</u>	<u>2,187</u>	<u>-147</u>
<u>Total Graduate Denials</u>	<u>1,511</u>	<u>1,502</u>	<u>-9</u>
<u>Total Graduate Enrolled</u>	<u>1,704</u>	<u>1,681</u>	<u>-23</u>



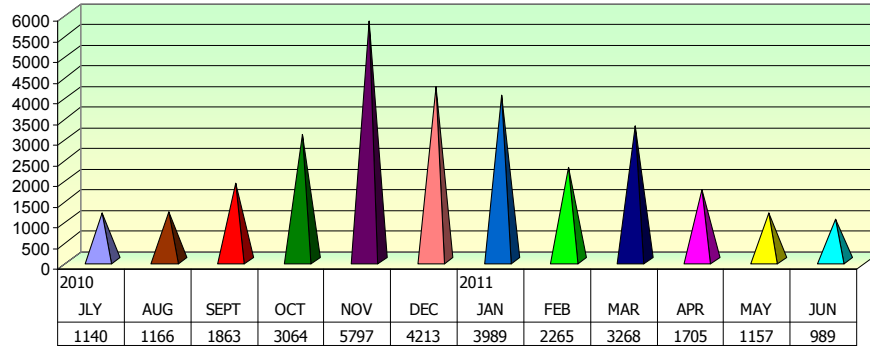
**UNIVERSITY OF UTAH**  
SUMMARY COMPARISON OF ADMISSION COUNTS

Page 2 of 6  
September/13/ 2011

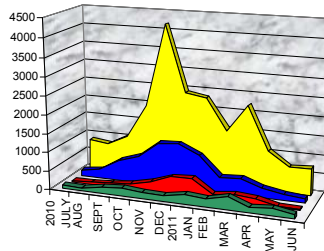
UAD0019a.RPT

	Fall 2010 09/12/2010	Fall 2011 09/12/2011	DIFFERENCE
<b>International</b>			
<u><b>Undergraduates</b></u>			
Total Frosh Applications	649	818	169
Total Frosh Admitted	450	534	84
Total Frosh Denied	31	43	12
Total Frosh Enrolled	195	212	17
Total Transfer Applications	304	403	99
Total Transfer Admitted	245	317	72
Total Transfer Denied	12	22	10
Total Transfer Enrolled	150	185	35
Total Second Bachelor Applications	19	29	10
Total Second Bachelor Admitted	14	22	8
Total Second Bachelor Denied	0	0	0
Total Second Bachelor Enrolled	3	12	9
Total Renewal Applications	47	53	6
Total Renewal Admitted	36	38	2
Total Renewal Denied	1	5	4
Total Renewal Enrolled	21	20	-1
Total Readmit Applications	34	30	-4
Total Readmit Admitted	31	26	-5
Total Readmit Denied	0	1	1
Total Readmit Enrolled	24	18	-6
<u><b>Total Undergraduate Applications</b></u>	<b>1,053</b>	<b>1,333</b>	<b>280</b>
<u><b>Total Undergraduate Admission</b></u>	<b>776</b>	<b>937</b>	<b>161</b>
<u><b>Total Undergraduate Denials</b></u>	<b>44</b>	<b>71</b>	<b>27</b>
<u><b>Total Undergraduate Enrolled</b></u>	<b>393</b>	<b>447</b>	<b>54</b>
<u><b>Graduates</b></u>			
Total Grad Applications	1,673	1,690	17
Total Grad Admitted	528	461	-67
Total Grad Denied	621	602	-19
Total Grad Enrolled	258	254	-4
Total Renewal Applications	63	89	26
Total Renewal Admitted	22	28	6
Total Renewal Denied	21	26	5
Total Renewal Enrolled	15	22	7
Total Readmit Applications	94	102	8
Total Readmit Admitted	50	53	3
Total Readmit Denied	22	26	4
Total Readmit Enrolled	41	43	2
<u><b>Total Graduate Applications</b></u>	<b>1,830</b>	<b>1,881</b>	<b>51</b>
<u><b>Total Graduate Admission</b></u>	<b>600</b>	<b>542</b>	<b>-58</b>
<u><b>Total Graduate Denials</b></u>	<b>664</b>	<b>654</b>	<b>-10</b>
<u><b>Total Graduate Enrolled</b></u>	<b>299</b>	<b>319</b>	<b>20</b>

**Table 2: Total Number of Applications Received by Month**

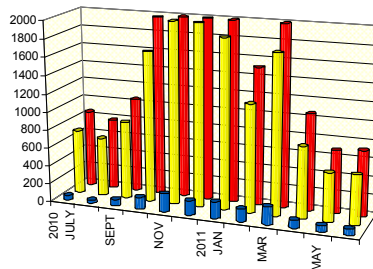


**Table 3: Applications Received by Month and Type**



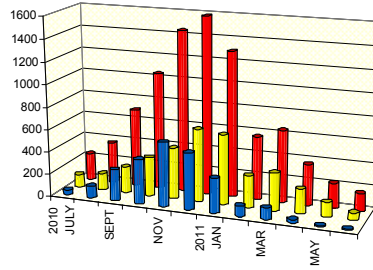
	2010	AUG	SEPT	OCT	NOV	DEC	2011	FEB	MAR	APR	MAY	JUN
	JULY						JAN					
International Undergraduate	102	88	189	216	171	165	258	218	349	157	198	108
International Graduate	30	54	89	143	273	472	493	144	210	160	54	30
Domestic Graduate	156	237	546	733	1141	1183	929	406	453	264	159	121
Domestic Undergraduate	856	773	1045	1977	4184	2420	2332	1503	2219	1058	697	721

**Table 4a: Domestic Undergraduate Applications, Admits and Denials by Month**



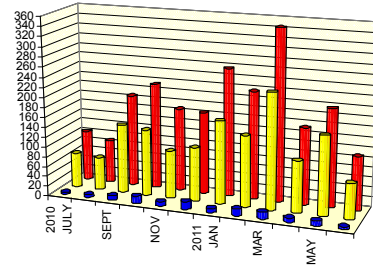
	2010	AUG	SEPT	OCT	NOV	DEC	2011	FEB	MAR	APR	MAY	JUN
	JULY						JAN					
Denied	51	31	72	129	204	162	183	137	200	89	68	66
Admitted	712	648	858	1659	3643	2015	1867	1188	1748	791	539	549
Applications	855	782	1047	1980	4166	2428	2333	1515	2226	1065	697	724

**Table 4b: Domestic Graduate Applications, Admits and Denials by Month**



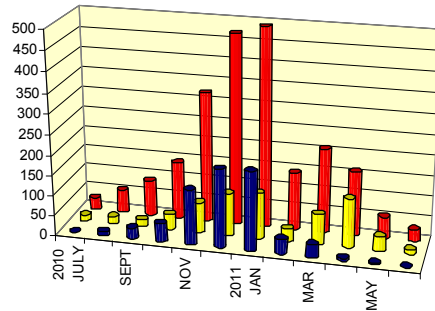
	2010 JULY	AUG	SEPT	OCT	NOV	DEC	2011 JAN	FEB	MAR	APR	MAY	JUN
■ Denied	45	107	281	398	575	505	309	92	105	31	9	10
■ Admitted	116	151	236	349	457	649	623	288	336	223	132	65
■ Applications	244	371	699	1048	1446	1587	1298	564	642	365	225	160

**Table 4c: International Undergraduate Applications, Admits and Denials by Month**



	2010 JULY	AUG	SEPT	OCT	NOV	DEC	2011 JAN	FEB	MAR	APR	MAY	JUN
■ Denied	4	5	9	14	9	16	8	14	14	9	10	5
■ Admitted	70	66	139	134	96	108	167	143	232	104	159	72
■ Applications	102	87	186	214	168	165	258	217	345	154	197	108

**Table 4d: International Graduate Applications, Admits and Denials by Month**



	2010 JULY	AUG	SEPT	OCT	NOV	DEC	2011 JAN	FEB	MAR	APR	MAY	JUN
■ Denied	1	10	27	46	137	195	196	38	33	7	4	1
■ Admitted	15	18	18	39	76	106	114	32	77	122	37	11
■ Applications	30	58	89	143	324	472	493	144	210	160	54	30

**Table 5: Fall 2011 Undergraduate Admitted Student Profile**

USAD0027-R1  
SA1020r\_R0015



**Admitted Student Profile Report  
Fall 2011**

Page 1 of 1  
October 03, 2011  
03:14:08.000000\_

	# of Students	High School GPA	ACT Composite	Index
<b>Admitted Freshmen</b>				
<b>Conditional</b>				
Non-Resident	409	3.5	24.3	111.3
Resident	839	3.5	23.2	109.7
<b>Non-Conditional</b>				
Non-Resident	2,581	2.9	21.2	94.7
Resident	4,286	3.6	24.7	114.2
<b>Total Admitted Freshman</b>	<b>8,115</b>	<b>3.4</b>	<b>23.3</b>	<b>107.5</b>
<b>Denied Freshmen</b>				
Non-Resident	368	2.7	19.6	88.9
Resident	312	2.7	18.9	88.8
<b>Total Denied Freshman</b>	<b>680</b>	<b>2.7</b>	<b>19.2</b>	<b>88.8</b>
	# of Students	Transfer GPA	Avg # of Trans Hrs	
<b>Admitted Transfers</b>				
Non-Resident	862	3.13	52.09	
Resident	2,341	3.23	64.52	
<b>Total Admitted Transfers</b>	<b>3,203</b>	<b>3.18</b>	<b>58.31</b>	
<b>Denied Transfers</b>				
Non-Resident	63	N/A	N/A	
Resident	175	N/A	N/A	
<b>Total Denied Transfers</b>	<b>238</b>			

**Table 6a-1**

**Summary of Freshmen Students Admitted with 5% Sponsorships  
Spring 2011, Summer 2011 and Fall 2011**

**By Gender**

	<u>Students:</u>	<u>Average ACT:</u>	<u>Average Index:</u>	<u>Average HS GPA:</u>
FEMALE:	132	18	89	2.85
MALE:	138	18	89	2.82

**By Ethnic Code**

	<u>Students:</u>	<u>Average ACT:</u>	<u>Average Index:</u>	<u>Average HS GPA:</u>
AFRICAN AMERICAN:	24	17	88	2.89
AMERICAN INDIAN:	12	19	90	2.77
ASIAN:	33	17	89	2.94
HISPANIC:	87	18	87	2.81
PACIFIC ISLANDER:	24	17	88	2.85
UNKNOWN:	3	18	92	2.95
WHITE:	87	19	91	2.81
TOTAL:	270	18	89	2.83

**Table 6a-2**

**Summary of Transfer Students Admitted with 5% Sponsorships  
Spring 2011, Summer 2011 and Fall 2011**

**By Gender**

	<u>Students:</u>	<u>Credits:</u>	<u>Average Transfer GPA:</u>
FEMALE:	7	54	2.35
MALE:	6	44	2.46

**By Ethnic Code**

	<u>Students:</u>	<u>Credits:</u>	<u>Average Transfer GPA:</u>
AFRICAN AMERICAN:	3	77	2.43
AMERICAN INDIAN:	0	-	-
ASIAN:	0	-	-
HISPANIC:	2	73	2.39
PACIFIC ISLANDER:	2	37	2.40
WHITE:	6	32	2.50
TOTAL:	13	50	2.40

**Table 6b-1**

**Summary of Freshmen Students Admitted with 5% Sponsorships  
Spring 2011, Summer 2011 and Fall 2011**

Students Admitted	270		
Average ACT	18		
Average Index	89		
Average GPA	2.83		
Missing 0 Courses	156		
Missing 1 Course	62		
Missing 2 Courses	27		
Missing 3 Courses	12		
Missing 4 Courses	7		
Missing 5 Courses	5		
Missing 7 Courses	1		
<hr/>			
Recommended by Academic Department:	20	Recommended by Center for Ethnic Student Affairs:	135
Average ACT	20	Average ACT:	17
Average Index	91	Average Index:	88
Average GPA	2.76	Average GPA:	2.84
Recommended by Admissions:	1	Recommended by Dance:	5
Average ACT	18	Average ACT	20
Average Index	94	Average Index	87
Average GPA	2.94	Average GPA	2.48
Recommended by Art:	6	Recommended by Educational Opportunity Programs:	10
Average ACT	20	Average ACT	17
Average Index	96	Average Index	89
Average GPA	3.02	Average GPA	2.93
Recommended by Athletics:	19	Recommended by Film Studies:	8
Average ACT	18	Average ACT:	19
Average Index	89	Average Index:	89
Average GPA	2.81	Average GPA:	2.78
Recommended by Ballet:	5	Recommended by Military:	4
Average ACT	20	Average ACT:	19
Average Index	93	Average Index:	85
Average GPA	2.83	Average GPA:	2.49
Recommended by Center for Disability Services:	16	Recommended by Music:	5
Average ACT	18	Average ACT:	19
Average Index	90	Average Index:	95
Average GPA	2.84	Average GPA:	3.03
		Recommended by Theatre:	8
		Average ACT:	19
		Average Index:	90
		Average GPA:	2.82
		Recommended by Women's Resource Center:	28
		Average ACT:	18
		Average Index:	91
		Average GPA:	2.87



<b>Table 6b-2</b>			
<b>Summary of Transfer Students Admitted with 5% Sponsorships</b>			
<b>Spring 2011, Summer 2011, and Fall 2011</b>			
Students Admitted	13	Recommended by Academic Dept:	6
Average Transfer Hours	50	Average Transfer Hours:	32
Average GPA	2.40	Average GPA:	2.39
		Recommended by Center for	
		Ethnic Student Affairs:	7
		Average Transfer Hours:	64
		Average GPA:	2.41

**Table 6c**

**5% Sponsorship Admits Graduation Summary  
1988 – 1995**

<b>ACADEMIC YEAR ADMITTED</b>	<b># OF STUDENTS</b>	<b># GRADUATED</b>	<b>YEAR GRAD/# GRAD</b>
1988	12	4	1992/1 1993/3
1989	30	3	1996/1 2000/2 (1 MEN)
1990	16	2	1997/1 1999/1
1991	27	4	1998/2 2000/1 2004/1 (MSW)
1992	34	5	1998/3 2007/2
1993	47	13	1998/5 1999/1 2000/3 (1 MSW) 2001/1 2002/1 2004/1 2008/1
1994	41	17	1998/1 1999/3 2000/5 (1PHD) 2001/2 2002/2 (1 MSW) 2004/2 2005/1 2006/1
1995	47	16	1999/4 2000/4 2002/5 2004/2 2005/1 (JD)

**Table 6c**

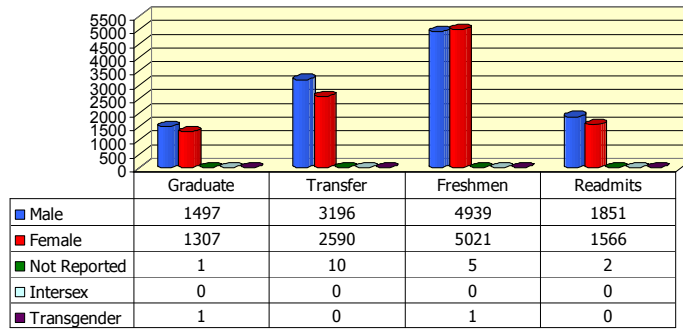
**5% Sponsorship Admits Graduation Summary  
1996 – 2001**

<b>ACADEMIC YEAR ADMITTED</b>	<b># OF STUDENTS</b>	<b># GRADUATED</b>	<b>YEAR GRAD/# GRAD</b>
1996	55	13	2001/6 2002/1 2004/2 2005/1 2006/1 2007/1 2009/1
1997	69	17	2000/1 2001/3 2002/3 2004/4 (1 MSW) 2005/3 2006/2 2009/1
1998	51	14	2002/1 2003/2 2004/2 2005/3 2006/1 2008/3 2009/1 (MSW) 2010/1
1999	59	11	2002/1 2004/3 2005/4 2006/1 2008/1 (1 MED) 2009/1
2000	71	20	2002/1 2004/2 2005/6 2006/4 2007/2 2008/1 2009/4 (1 MED)
2001	58	35	2004/2 2005/11 2006/5 2007/3 2008/4 2009/6 (1 MED) 2011/4 (1MED)

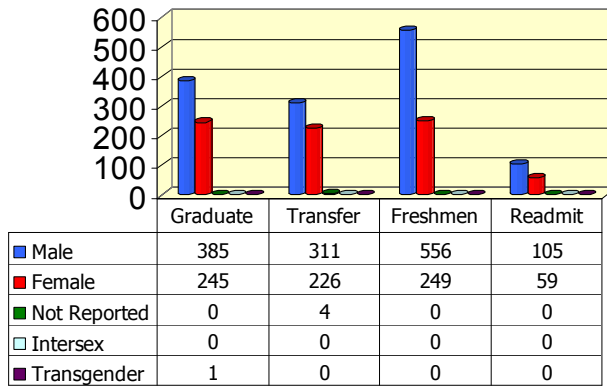
**Table 6c****5% Sponsorship Admits Graduation Summary  
2002 - Fall 2011**

<b>ACADEMIC YEAR ADMITTED</b>	<b># OF STUDENTS</b>	<b># GRADUATED</b>	<b>YEAR GRAD/# GRAD</b>
2002	74	18	2005/3 2006/4 2007/7 2008/0 2009/3 (1 MPA) 2010/2
2003	156	59	2005/3 2006/7 2007/10 2008/19 2009/13 (1 MSW) 2010/7
2004	157	44	2006/4 2007/6 2008/19 2009/10 2010/5
2005	167	44	2007/3 2008/8 2009/19 2010/14
2006	159	29	2008/2 2009/14 2010/13
2007	193	21	2008/2 2009/5 (1 MEN) 2010/14
2008	204	4	2007/1 2009/1 2010/2
2009	233	1	2009/1
2010	239	1	2010/1
Fall 2011	237	0	

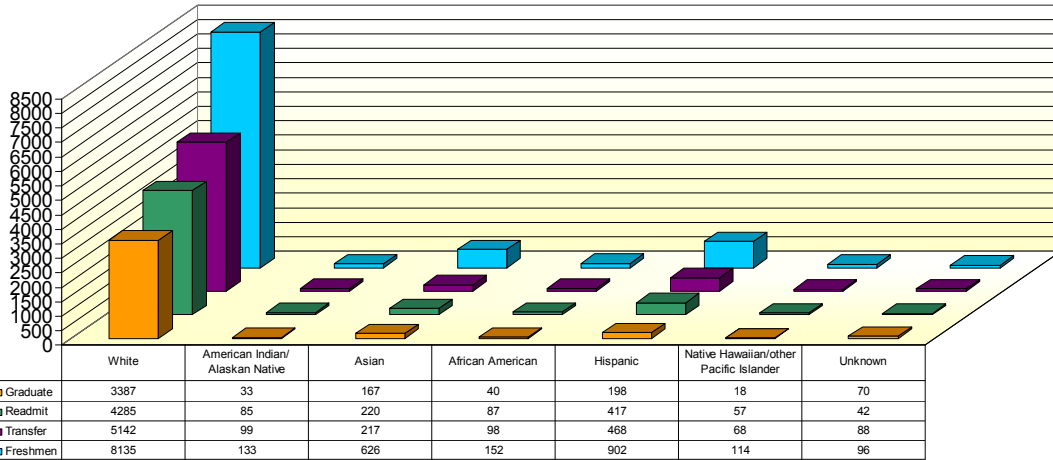
**Table 7a: Admitted Domestic Students by Gender Spring 2011-Fall 2011**



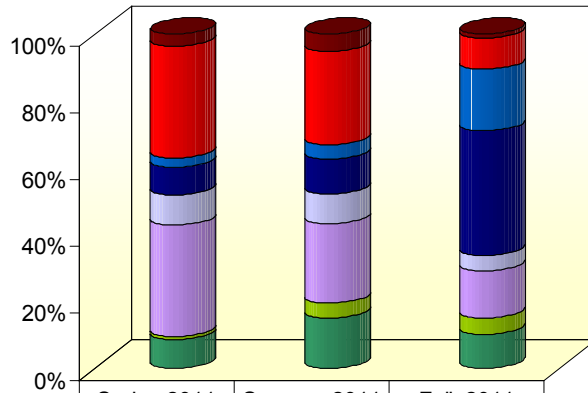
**Table 7b: Admitted International Students by Gender Spring 2011-Fall 2011**



**Table 8: Admitted Students by Ethnic Groups Spring 2011-Fall 2011**

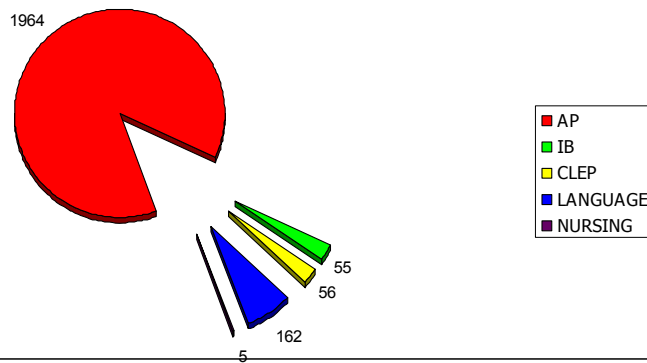


**Table 9: Resident and Non Resident Students Admitted By Term**

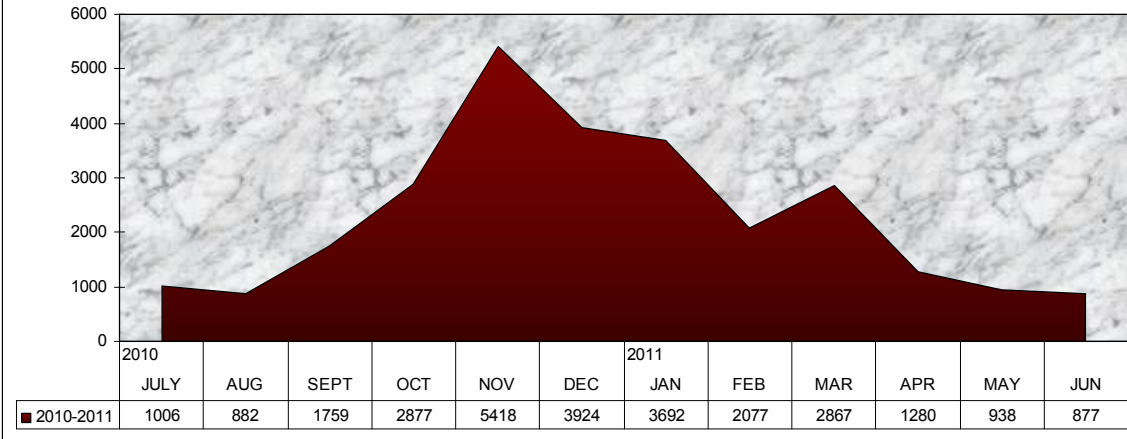


	Spring 2011	Summer 2011	Fall 2011
Readmit - Non Resident	110	93	162
Readmit - Resident	1009	508	1238
Freshmen - Non Resident	81	78	2438
Freshmen - Resident	249	189	4928
Transfers - Non Resident	275	164	591
Transfers - Resident	999	430	1881
Graduate - Non Resident	34	80	635
Graduate - Resident	255	273	1345

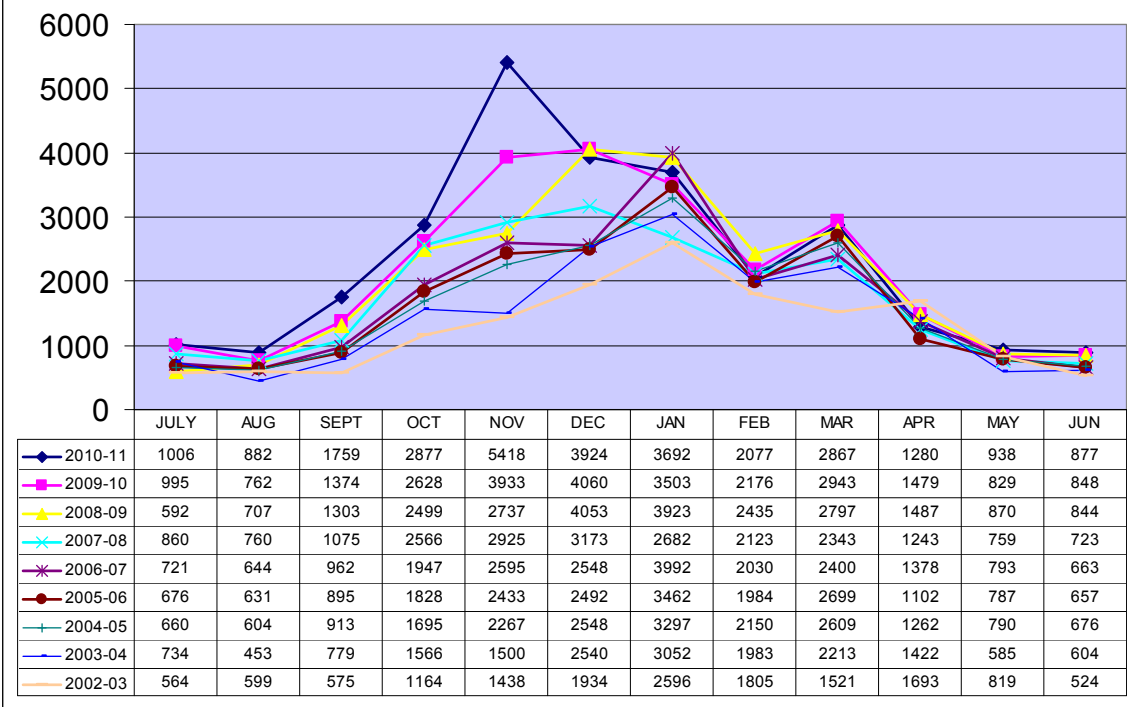
**Table 10: Number of Students with Posted Test Credit Spring 2011-Fall 2011**



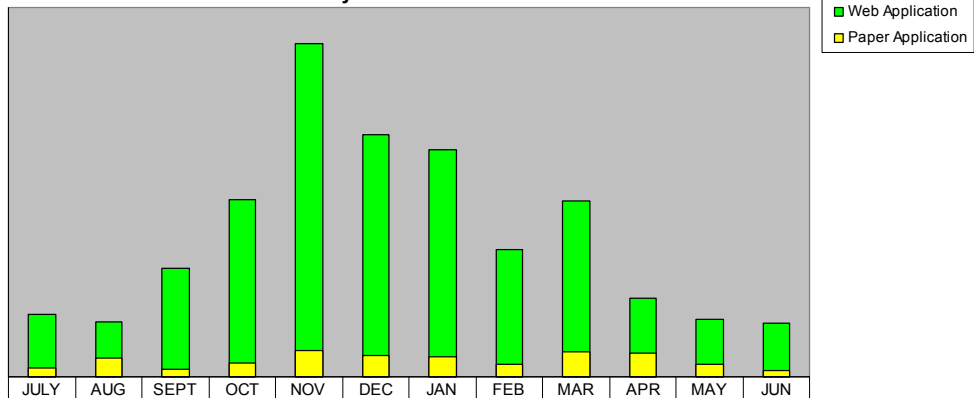
**Table 11a: Total Number of Web Applications Processed by Month**



**11b: Web Applications by Month**

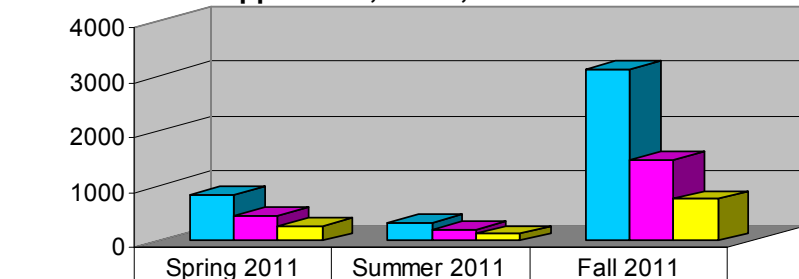


**Table 11c**  
**Web vs Paper Applications**  
**July 2010 - June 2011**



	JULY	AUG	SEPT	OCT	NOV	DEC	JAN	FEB	MAR	APR	MAY	JUN
Web Application	1006	882	1759	2877	5418	3924	3692	2077	2867	1280	938	877
Paper Application	132	294	112	220	435	354	331	199	413	376	206	103

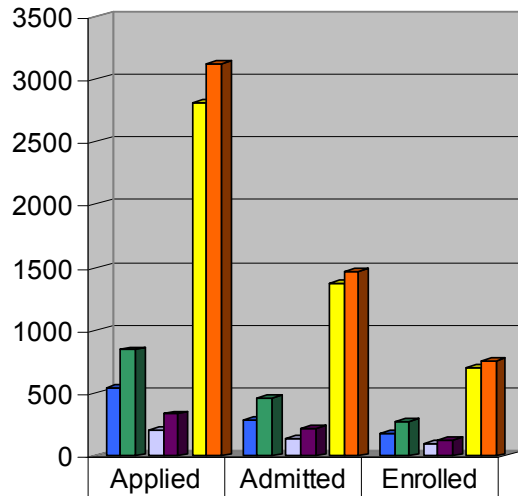
**Table 12**  
**International Applicants**  
**Application, Admit, Enrolled**



	Spring 2011	Summer 2011	Fall 2011
Appl	846	334	3118
Admit	462	217	1468
Enrolled	275	125	760



**Table 12a**  
**International Applicants - Comparison**  
**Application, Admit, Enrolled**



	Applied	Admitted	Enrolled
■ Spring 2010	541	287	178
■ Spring 2011	846	462	275
■ Summer 2010	210	144	104
■ Summer 2011	334	217	125
■ Fall 2010	2814	1376	701
■ Fall 2011	3118	1468	760

**Table 13:** House Bill 144 Participants Progress

Adm Term	Career	ACT	HS GPA	INDEX	TR GPA	TR CR	LAST TERM	GPA	CUM	CR/DEGREE	DEGREE DATE
2001 F	U	19	3.67	106	3.85	6	2007 F	3.3	2.98	187 BS	2007 S
2002 F	U	15	3.26	91			2009 S	3.91	2.89	160 BA	2009 S
2003 S	U						2011 U	4	3.31	31	
2003 U	U	21	2.53	89			2005 S	1.65	1.88	41	
2003 F	U	15	2.57	79	2.5	20	2008 F	2.39	2.8	122 BA	2009 S
2003 F	U	19	3.33	99			2003 F	1.52	1.52	7	
2003 F	U	24	2.87	100			2011 U	3	2.22	111	
2003 F	U	16	2.77	84			2010 U	3.75	3.52	186 HEE 2010 U	
2003 F	U	21	3.3	103	3.7	3	2009 S	3.53	2.94	136 BA	2009 S
2003 F	U	25	3.08	106			2008 S	2.91	3.15	170 BA	2008 S
2003 F	U	18	3.8	108			Did Not Attend				
2003 F	U	19	3.06	95	3.65	6	2010 F	4	2.67	132 BA	2010 F
2003 F	U	16	3.68	100	3.36	54	2004 F	2.57	2.49	14	
2003 F	U	18	3.42	99			2005 S	0	0	0	
2003 F	U	20	2.75	91			2004 F	1.44	2.49	45	
2003 F	U	23	3.72	114			2010 U	2.82	2.98	144 BS	2010 U
2004 S	U	13	3.6	94			2004 F	2.67	2.86	16	
2004 S	U				3.53	55	Did Not Attend				
2004 S	U						Did Not Attend				
2004 U	U				3.53	55	2006 U	4	3.69	127 BA	2006 U
2004 F	U	19	2.81	90	3.3	6	2007 S	0.35	1.39	42	
2004 F	U	15	2.57	79			2011 S	3.3	2.32	61	
2004 F	U	15	2.88	84			2006 F	0	0	1	
2004 F	U	17	3.37	97			2009 U	1.7	2.84	149 BA	2009 U
2004 F	U	19	2.52	85			2010 F	3.77	3.12	61	
2004 F	U	20	2.87	93			2007 F	1.44	1.92	50	
2004 F	U	16	3.37	95			2010 S	3	3.03	92	
2004 F	U	15	2.89	85			Did Not Attend				
2004 F	U	15	3	86			2006 S	0	0	0	
2004 F	U	21	3.67	109	4	6	2010 S	3.75	3.86	131 BS	2010 S
2004 F	U	25	3.78	118			2009 S	3.79	3.63	170 BFA 2009 S	
2004 F	U	16	3.29	93			2004 F	2.57	2.57	7	
2004 F	U	18	3.4	99			2004 F	3	3	3	
2004 F	U	17	3.44	98	1.99	9	2010 F	1	2.21	61	
2004 F	U	19	3.44	101	3.59	17	Did Not Attend				
2004 F	U	18	3.3	97	3.21	45	2011 S	3.23	3.1	171 BS	2008 S
2004 F	U	17	3.25	94			Did Not Attend				
2004 F	U	25	3.07	108	2.67	21	2005 F	2	0.88	39	
2004 F	U	15	3.33	92			2011 S	2.73	2.65	57	
2005 S	U						Did Not Attend				
2005 U	U				3.48	92	2009 S	4	3.79	190	
2005 U	U	16	3.92	105			Did Not Attend				
2005 F	U	21	3.74	110			2009 F	4	3.09	130 BS	2009 F
2005 F	U	28	3.98	124			2010 U	2.7	3.03	145 BCS 2010 U	
2005 F	U	31	3.83	130			2007 F	0.33	1.73	59	
2005 F	U	17	3.8	104			Did Not Attend				

Adm Term	Career	ACT	HS GPA	INDEX	TR GPA	TR CR	LAST TERM	GPA	CUM	CR/DEGREE	DEGREE DATE	
2005 F	U	18	3.16	91			Did Not Attend					
2005 F	U	18	3.63	103			2007 F	3.3	2.81	42		
2005 F	U	20	2.49	86			Did Not Attend					
2005 F	U	15	3.38	92			2010 U	2.7	2.97	123 BA	2010 U	
2005 F	U	21	3.76	111	3.44	67	Did Not Attend					
2005 F	U	22	3.98	116	3.5	90	Did Not Attend					
2005 F	U	19	3.19	97			2008 S	2.57	2.25	59		
2005 F	U						Did Not Attend					
2005 F	U	17	3.65	102			2010 S	0.51	2.81	55		
2005 F	U	21	2.59	90	4	6	2011 S	3.31	2.8	105		
2005 F	U	20	3.97	113	3.88	25	2011 U	4	3.78	194		
2005 F	U	18	2.96	91			2010 S	3.03	2.63	122 BS	2010 S	
2005 F	U	24	3.97	120			2008 S	3.46	3.78	85		
2005 F	U	19	3.8	108	3.69	64	Did Not Attend					
2005 F	U	15	3.66	98			2011 U	2.7	2.67	130 BS	2011 U	
2005 F	U	20	3.37	102	2.28	14	2011 U	3.5	2.89	122		
2005 F	U	18	3.78	106	2.83	12	2008 F	1.58	1.89	64		
2005 F	U	18	3.96	109			Did Not Attend					
2005 F	U	20	3.73	108			2008 F	1.75	2.92	71		
2005 F	U	22	3.94	116			2009 S	3.57	3.69	147 BUS 2009 S		
2005 F	U	18	3.26	96			2006 F	0.67	1.29	16		
2005 F	U	18	3.66	104	3.46	15	2006 F	2.48	2.95	57		
2005 F	U				2.75	70	2008 S	1.57	2.39	117		
2005 F	U	22	3.59	109	4	37	2011 U	3.93	3.13	81		
2005 F	U	18	3.61	103			2010 F	3.65	3.01	122 BS	2010 F	
2005 F	U						Did Not Attend					
2005 F	U				3.77	57	2010 U	3.7	3.52	192 BA	2010 U	
2006 S	U	18	2.85	89			2006 S	1.7	1.7	3		
2006 S	U				3.36	54	Did Not Attend					
2006 S	U				3.37	33	Did Not Attend					
2006 U	U	15	3.52	96	2.9	9	2010 S	3.55	3.12	134 BS	2010 S	
2006 F	U	16	3.49	97	2.07	11	2006 F	2.6	2.6	24		
2006 F	U	19	3.49	102	3.65	64	2010 F	3.27	3.58	135		
2006 F	U	20	3.81	110			Did Not Attend					
2006 F	U	17	3.63	101			2011 S	3	2.6	126 BA	2011 S	
2006 F	U	20	2.94	94	3.2	37	Did Not Attend					
2006 F	U	21	3.29	102			2010 F	1.88	2.71	173 BA	2010 S	
2006 F	U	21	3.7	110	3.56	36	2011 U	3.43	2.42	99		
2006 F	U				3.11	93	2011 U	3.85	3.34	142 BS	2011 U	
2006 F	U				3.15	90	2010 U	3	3.15	162 BS	2010 U	
2006 F	U	16	3.33	94			2010 U	1.3	2.99	127 BA	2010 S	
2006 F	U	16	3.26	93			2007 S	0.16	1.21	15		
2006 F	U				3.25	85	Did Not Attend					
2006 F	U	22	3.91	115			2011 S	3.01	3.01	123 BS	2011 S	

Adm Term	Career	ACT	HS GPA	INDEX	TR GPA	TR CR	LAST TERM	GPA	CUM	CR/DEGREE	DEGREE DATE	
2006 F	U	21	3.75	111	2.75	12	2011 S	3.31	3.44	160		
2006 F	U	22	3.89	111	3.27	76	2010 S	3.33	3.09	194 BCV 2010 S		
2006 F	U	19	3.5	102			2011 S	3.1	3.04	116		
2006 F	U	17	3.82	101	2.99	13	2008 S	3.09	2.85	74		
2006 F	U	24	3.7	115	3.8	24	2011 S	3.7	3.05	137 BS	2011 S	
2006 F	U	25	4	122	4	10	2010 S	3.31	3.81	123 BS	2010 S	
2006 F	U	19	3.09	95			2011 S	3.33	3.03	114		
2006 F	U						2010 S	2.98	2.99	135 BA	2010 S	
2006 F	U	23	3.27	108			2011 U	4	3.46	122 BS	2011 U	
2006 F	U	22	3.57	109			2011 U	2.87	3.34	131		
2007 S	U				3.32	66	2009 S	3.38	3.71	122 BS	2009 S	
2007 U	U				2.66	63	2011 U	1.59	2.94	170 BS	2011 S	
2007 U	U	16	2.69	83			Did Not Attend					
2007 U	U				3.81	88	2008 F	3.04	3.15	133 BS	2008 F	
2007 F	U	28	4	127	3.99	40	2008 S	4	3.92	64		
2007 F	U	28	3.8	120			2011 S	3.15	2.82	67		
2007 F	U	28	4	124			2011 S	4	4	130		
2007 F	U	24	3.55	112	3.48	11	Did Not Attend					
2007 F	U	22	3.71	112	3.19	21	2011 S	3.77	3.6	146 BA	2011 S	
2007 F	U							208 BEE 2011 S				
2007 F	U	27	3.72	121	2008 S	2.45	2.84	53				
2007 F	U	21	3.7	110	3.9	9	2011 S	3.85	2.67	36		
2007 F	U						2011 U	2.43	2.91	128		
2007 F	U				3.44	67	2010 S	3.68	3.44	169 BS	2010 S	
2007 F	U	21	3.36	104			2011 U	1.55	2.61	38		
2007 F	U						2011 S	2.97	3.3	200 BS	2011 S	
2007 F	U				3.85	6	2007 F	3.3	2.98	187 BS	2007 S	
2007 F	U						2007 F	1.44	1.92	50		
2007 F	U				3.37	96	2008 F	1.7	0.71	101		
2007 F	U						2009 U	0.85	1.24	23		
2007 F	U						2011 U	4	3.4	135 BUS 2011 S		
2007 F	U	20	3.72	108	2.41	17	2010 S	1.8	2.77	84		
2007 F	U	15	3.13	89			2007 F	3.18	3.18	12		
2007 F	U						2011 U	2.35	2.22	86		
2007 F	U	18	3.6	102			2011 S	3.7	3.23	91		
2007 F	U				4	22	2009 S	3.85	3.73	64		
2007 F	U				3.69	64	Did Not Attend					
2007 F	U	20	3.55	105			2011 S	2.43	2.56	91		
2007 F	U	25	3.38	111	3.81	11	2008 F	3.57	3.26	47		
2007 F	U	20	3.89	111	4	6	2011 U	3.67	3.87	142		
2007 F	U	20	3.68	107	2.44	11	2010 S	2.9	3.38	105		
2007 F	U	19	2.53	85			2007 F	1.13	1.13	6		
2007 F	U	17	2.81	87			2008 S	2.46	2.65	25		
2007 F	U	13	2.84	80			Did Not Attend					
2007 F	U	19	3.85	109	3.39	10	2008 S	3.14	3.34	37		
2007 F	U	22	2.84	93			2011 U	4	3.41	98		
2007 F	U	17	3.86	105	3.51	89	Did Not Attend					
2008 S	U	17	3.32	96	1.87	10	2011 U	3.7	3.25	127		

Adm Term	Career	ACT	HS GPA	INDEX	TR GPA	TR CR	LAST TERM	GPA	CUM	CR/DEGREE	DEGREE DATE
2008 S	U						Did Not Attend				
2008 U	U				3.81	41	2011 S	3.5	3.55	149	
2008 U	U	15	3.65	98			2010 S	2.47	2.21	45	
2008 F	U	15	3.98	104			2009 S	0.79	1.01	9	
2008 F	U	21	3.75	111	3.85	6	2011 S	2.55	2.64	93	
2008 F	U	18	3.95	109			2011 S	3.5	3.48	93	
2008 F	U	23	3.17	104			2010 S	0	0	2	
2008 F	U	16	3.73	101			Did Not Attend				
2008 F	U				3.2	37	Did Not Attend				
2008 F	U				3.48	11	2010 F	2	2.4	55	
2008 F	U	24	3.37	109	2.85	31	2009 F	0.75	1.24	61	
2008 F	U						2011 S	2.89	2.41	102	
2008 F	U	23	3.63	112			2011 U	1.93	2.44	80	
2008 F	U						2011 S	1.73	2.68	59	
2008 F	U	15	2.95	86	1.16	9	2009 S	2.07	2.55	28	
2008 F	U	25	3.08	106	2.72	19	2011 S	2.13	2.87	122	
2008 F	U	12	2.58	74			2010 F	2.7	3.13	29	
2008 F	U	24	3.91	119			2011 S	3.28	3.56	102	
2008 F	U	21	3.92	114	3.74	80	Did Not Attend				
2008 F	U				3.18	79	2011 U	2.65	2.37	118	
2008 F	U				3.2	123	2011 U	2	3.4	140	
2008 F	U				3.6	70	2008 F	4	4	74	
2008 F	U	21	3.75	111	3.9	9	2011 S	4	3.87	75	
2008 F	U	20	3.07	97	2.77	25	2011 S	3.38	3.3	104	
2008 F	G						2010 F	3.15	3.43	18	
2008 F	U				2.83	12	2008 F	1.58	1.89	64	
2008 F	U						Did Not Attend				
2008 F	U				3.6	67	2011 S	3.23	2.76	134	
2008 F	U	20	3.7	108			2011 S	3.7	3.46	85	
2008 F	U						Did Not Attend				
2008 F	U	21	3.67	109	3.6	87	Did Not Attend				
2008 F	U				3.45	60	2008 F	1.7	1.7	67	
2008 F	U	17	3.38	97	1.98	36	Did Not Attend				
2008 F	U				1.99	9	Did Not Attend				
2008 F	U	19	3.67	106			2010 S	2.34	3.03	36	
2008 F	U	23	2.74	96			2011 S	1.85	2.33	45	
2008 F	U	21	3.22	101			2009 S	2.8	3.25	28	
2008 F	U	15	3.65	98	3.1	11	2011 S	4	3.45	60	
2008 F	U	22	3.9	115	3.73	11	2011 S	3.62	3.83	92	
2008 F	U	21	3.52	106	3.78	17	2011 S	2.43	2.39	61	
2008 F	U	19	3.72	106			2009 S	2.92	3.07	28	
2009 S	U				2.85	40	2009 U	2	2.55	54	
2009 S	U	18	2.41	81	3.18	5	2011 U	2.3	2.88	32	
2009 S	U				3.2	37	2009 U	1.7	1.83	44	
2009 S	U				3.56	36	2011 U	3.43	2.42	99	
2009 S	U						2011 U	3.93	3.74	122 BA	2011 U
2009 S	U				3.76	65	2010 F	3.18	3.05	110	
2009 S	U				3.7	3	2009 S	3.53	2.94	136 BA	2009 S
2009 S	U				2.93	60	2010 F	3.5	3.5	72	

Adm Term	Career	ACT	HS GPA	INDEX	TR GPA	TR CR	LAST TERM	GPA	CUM	CR/DEGREE	DEGREE DATE
2009 S	U				3.25	71	2011 S	3.43	3.72	134 BA	2011 S
2009 S	U						2009 F	2.3	2.72	74	
2009 S	U				1.99	9	2010 F	1	2.21	61	
2009 U	G				3.48	92	2009 U	4	4	4	
2009 U	U	24	3.91	119			2010 F	1.99	2.25	28	
2009 U	U	18	3.62	103	3.3	13	2009 F	3.58	3.66	28	
2009 F	U						2011 U	1	0.39	8	
2009 F	U						2010 S	1.67	2.04	28	
2009 F	U	33	4	138			2011 S	3.53	3.78	139	
2009 F	U	21	3.25	102			2010 F	2.7	3	37	
2009 F	U				3.61	87	2011 S	3.72	3.51	151 BSN 2011 S	
2009 F	U	23	3.12	103			Did Not Attend				
2009 F	U				3.18	43	2011 S	3.65	2.75	89	
2009 F	U				3.15	4	2011 S	3.05	2.9	82	
2009 F	U				3.79	32	2010 F	3.5	2.24	41	
2009 F	U	21	3.47	108	3.1	9	2010 U	1	1	28	
2009 F	U	21	3.96	114	3.91	20	2011 S	3.68	3.81	84	
2009 F	U	22	3.32	105			2011 S	2.68	2.72	50	
2009 F	U	17	3.66	102			Did Not Attend				
2009 F	U	21	3.68	109			2011 S	3.75	3.82	51	
2009 F	U	19	3.37	100			2010 F	0.87	1.88	27	
2009 F	U	21	3.45	105	2.35	8	Did Not Attend				
2009 F	U	18	3.42	99			Did Not Attend				
2009 F	U				2.54	39	2010 F	0.09	1.22	57	
2009 F	U	22	3.13	101			2010 F	1.34	1.53	33	
2009 F	U	21	3.85	112			2011 S	1.72	2.36	63	
2009 F	U	20	2.84	93			Did Not Attend				
2009 F	U						2010 S	2.75	3.18	99	
2009 F	U	16	3.45	96			2009 F	0.83	0.83	3	
2009 F	U	15	2.55	78			Did Not Attend				
2009 F	U	18	3.05	93	4	3	2011 S	2.42	2.91	54	
2009 F	U	27	3.9	124	3.75	11	2010 S	2.7	3	17	
2009 F	U	18	2.87	90	2.43	5	Did Not Attend				
2009 F	U	20	3.68	107	3.48	44	2011 S	3.25	3.02	78	
2009 F	U	18	3.71	104	3.27	49	2011 S	3.28	3.49	108	
2009 F	U	19	3.21	97			2011 S	3.35	3.1	52	
2009 F	U	25	3.91	120	3.39	13	2011 U	2.65	3.34	81	
2009 F	U	24	3.79	117			2011 S	3.6	3.58	71	
2009 F	U	14	2.94	84			2010 F	1.5	1.59	22	
2009 F	U	22	3.35	105			2009 F	3.3	3.3	4	
2009 F	U	17	2.81	87			Did Not Attend				
2009 F	U	17	2.89	88			2011 S	2	2.81	21	
2009 F	U	21	3.55	107	3.9	9	2011 S	3.79	3.66	71	
2009 F	U	19	3.18	97			Did Not Attend				
2009 F	G				3.32	66	2011 U	3.7	3.65	49	
2009 F	U	15	2.61	80			2011 S	2.09	3.12	47	
2009 F	U				1.98	36	2011 S	2.68	1.59	64	
2009 F	U	19	2.77	90			2011 U	1.67	2.74	50	

Adm Term	Career	ACT	HS GPA	INDEX	TR GPA	TR CR	LAST TERM	GPA	CUM	CR/DEGREE	DEGREE DATE	
2009 F	U				2.69	75	2011 U	2.42	2.13			102
2009 F	U	21	3.42	105	3.9	9	2011 U	3.43	3.09			78
2009 F	U	18	2.48	83			2011 S	1	3.25			28
2009 F	U	23	3.09	102			2009 F	2.18	2.18			27
2009 F	U				3.51	89	2011 U	2.85	2.93			137
2010 S	U	28	3.14	112			Did Not Attend					
2010 S	U				2.43	5	2010 S	1.3	1.3			9
2010 S	G						2011 S	4	3.14			12
2010 U	U	17	3.79	104	4	1	2011 S	3.88	3.61			35
2010 U	U	12	2.83	78			2011 S	3.85	3.68			15
2010 U	U				3.57	86	2011 S	2.98	3.15			137
2010 U	U				3.8	87	2011 U	3.57	3.54			146
2010 F	U				3.13	107	2011 S	2.64	2.93			140
2010 F	U				3.09	21	2011 S	3.5	3.58			31
2010 F	U	21	3.53	107			2011 S	1.85	2.32			30
2010 F	U						2010 F	1.57	1.57			9
2010 F	U	22	3.8	113	3.31	51	2010 F	1.44	1.44			67
2010 F	U	16	3.48	97			2011 S	2.65	2.65			25
2010 F	U	14	3.21	88			2011 S	3.16	3.33			22
2010 F	U				3.24	42	2011 S	3.03	3.24			91
2010 F	U	29	4	129	4	60	2011 S	3.91	3.78			101
2010 F	U	23	3.93	117			2011 S	2.67	3.16			31
2010 F	U	22	2.07	83			2011 S	0.23	0.75			7
2010 F	U	13	3.7	95			2011 S	0.85	0.85			3
2010 F	U	22	3.8	113	3.64	14	2011 S	3.02	2.8			41
2010 F	U	15	2.97	86			2011 S	1.11	1.33			16
2010 F	U				3.5	90	2010 F	3.53	3.53			102
2010 F	U	15	3.27	91			2011 S	0.75	1.43			12
2010 F	U	18	3.74	105	4	3	2011 U	2.35	3.15			38
2010 F	U						2011 U	1.55	2.61			38
2010 F	U	21	3.99	115			Did Not Attend					
2010 F	U	15	2.68	81			2010 F	2.5	2.5			6
2010 F	U	19	2.71	88			2011 S	1.42	2.21			19
2010 F	U	25	4	122			2011 S	4	3.92			29
2010 F	U				3.39	111	2011 S	3.53	3.44			143
2010 F	U	21	3.98	115			2010 F	2.43	2.43			18
2010 F	G						2011 S	3.47	3.32			41
2010 F	G						2011 S	3.47	3.32			41
2010 F	U				3.74	80	2011 S	3.47	3.53			109
2010 F	U	22	3.73	112			Did Not Attend					
2010 F	U				3.77	70	2010 F	1.7	1.7			79
2010 F	U	15	2.71	81	2.7	9	2011 S	2.78	2.73			31
2010 F	U	20	3.3	101			2010 F	3.3	3.3			15
2010 F	U				3.45	97	2011 S	3.91	3.95			116
2010 F	U	24	2.15	88			2011 S	0.19	0.41			9
2010 F	G						2011 S	3.39	3.4			32
2010 F	U				3.2	81	2011 U	2	2.71			107
2010 F	U	24	3.65	114			2011 S	3.6	3.79			28
2010 F	U	23	3.7	113			2010 F	0.67	0.67			18
2010 F	U	15	3.08	88			2011 S	1.71	2.48			17
2010 F	U						Did Not Attend					
2010 F	U				3.04	64	2011 U	3.7	2.98			77
2010 F	U				2.49	116	2011 S	2.67	3.14			137
2010 F	U				3.21	45	2011 S	3.23	3.1	171 BS	2008 S	

Adm Term	Career	ACT	HS GPA	INDEX	TR GPA	TR CR	LAST TERM	GPA	CUM	CR/DEGREE	DEGREE DATE	
2010 F	U	19	3.25	98			2011 S	2.57	2.91	36		
2010 F	U	31	4	133			2011 S	3.78	3.69	41		
2011 S	U				3.08	82	Did Not Attend					
2011 S	U				3.85	6	Did Not Attend					
2011 S	U				3.2	123	2011 U	2	3.4	140		
2011 S	U				3.77	13	2011 S	4	3.53	24		
2011 S	U						2011 U	4	3.31	31		
2011 S	U				3.34	64	2011 U	4	3.91	74		
2011 U	U	21	3.06	98	2.01	13	2012 S	0	0	13		
2011 U	U				3.21	51	2011 U	4	4	67		
2011 U	U				4	37	2011 U	3.93	3.13	81		
2011 F	U				3.99	40	2008 S	4	3.92	64		
2011 F	U				2.85	65	Current Term					
2011 F	U	26	3.61	117			Current Term					
2011 F	U	18	2.78	88			Did Not Attend					
2011 F	U	24	3.74	116			Current Term					
2011 F	U	20	3.77	109	3.3	2	Current Term					
2011 F	U	19	3.33	99			Did Not Attend					
2011 F	U				3.08	82	Current Term					
2011 F	U	26	3.39	113			Current Term					
2011 F	U				0.85	3	Current Term					
2011 F	U	28	3.13	112			Current Term					
2011 F	U	24	3.3	108			Current Term					
2011 F	U	27	3.98	125			Did Not Attend					
2011 F	U	16	2.89	86			Did Not Attend					
2011 F	U	19	3.55	103	1.85	4	Current Term					
2011 F	U	20	3.37	102			Current Term					
2011 F	U	18	3.66	104	4	12	Current Term					
2011 F	U	23	3.28	106			Current Term					
2011 F	U				3.6	70	2008 F	4	4	74		
2011 F	U	16	2.74	84			Current Term					
2011 F	U	18	3.74	105			Did Not Attend					
2011 F	G						Current Term					
2011 F	U						2010 S	4	4	3		
2011 F	U	18	2.37	81			Current Term					



Adm Term	Career	ACT	HS GPA	INDEX	TR GPA	TR CR	LAST TERM	GPA	CUM	CR/DEGREE	DEGREE DATE	
2011 F	U				3.72	66	Current Term					
2011 F	U	22	3.65	111	3.21	14	Current Term					
2011 F	U						2009 F	3.3	3.3	4		
2011 F	U				3.81	11	2008 F	3.57	3.26	47		
2011 F	U				3.3	66	Current Term					
2011 F	U						2010 S	4	4	3		
2011 F	U	21	3.19	101			Current Term					
2011 F	U						2008 S	2.46	2.65	25		
2011 F	U				3.45	99	Current Term					
2011 F	U				3.7	2	2011 S	3.43	3.51	14		
2011 F	U	19	3.74	107	3.14	14	Current Term					
2011 F	U	15	3.31	92			Current Term					
2011 F	U	22	3.57	109	3.23	23	Current Term					
2011 F	U	18	3.39	99	3.54	68	Current Term					
2011 F	U	19	3.47	102	3.05	18	Current Term					
2011 F	U	25	3.7	117			Current Term					