



**KINEVO 900 from ZEISS**  
Advancing Surgical Certainty



# Mastering the complex.

ZEISS KINEVO 900

## KINEVO 900 – The Robotic Visualization System

Just like you, we love challenging the status quo.

The result? Over 100 innovations to perfect the already acclaimed surgical visualization platform. KINEVO® 900 from ZEISS is designed to deliver more functionalities than any surgical microscope today.

ZEISS KINEVO 900 combines **digital and optical visualization modalities**, offers a unique **Micro-Inspection Tool** and will impress you with its **Surgeon-Controlled Robotics**. All to enable you to gain greater certainty in a virtually disruption-free workflow.

Designed to meet real needs. To make a real difference!

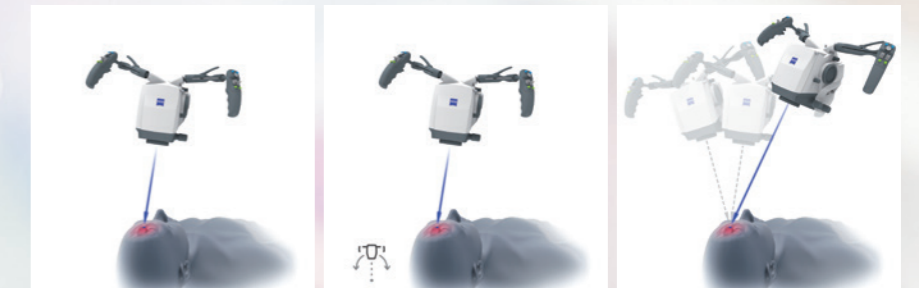
// INNOVATION  
MADE BY ZEISS



## A lot more. And, a lot less too.

When treating complex vascular conditions, you typically work at high magnification. Even the slightest vibrations can cause disruptions. And constant manual repositioning to better visualize structures or precisely approach deep-seated lesions can become extremely tedious. Not anymore! ZEISS KINEVO 900 delivers a lot more positioning precision with a lot less effort.

### PointLock



Focus

Activate

Swivel

**Surgeon-Controlled Robotics** adds a complete new level of ease to precise positioning. Imagine being able to focus and move around a structure to visualize the targeted anatomy – reducing any manual hassle. In addition, **PointLock** enables you to do a KeyHole movement to observe a larger area inside a cavity – a particular benefit in areas with narrow access. Simply put:

**Focus. Activate. Swivel.**

### Active vibration damping



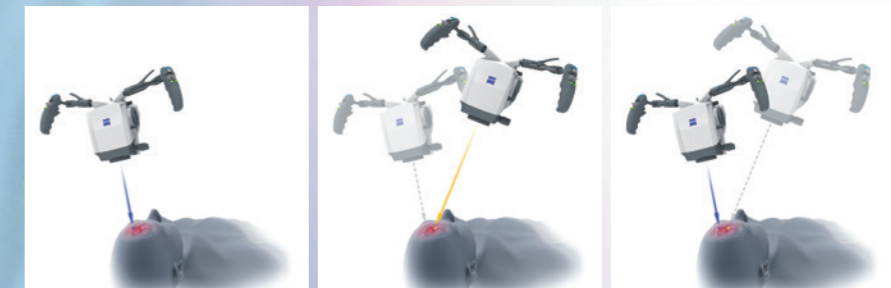
You know the problems that can be created by the tiniest vibrations. The active damping provided by ZEISS KINEVO 900 minimizes collateral system vibrations, ensuring rock-solid stability. Enabling you to completely, and steadily, focus on what matters most: **your treatment.**



## When you need it. Where you need it.

The new navigation interface of ZEISS KINEVO 900 is designed to work in concert with your navigation device. When you require precise repositioning to reexamine previously visualized structures or when you need to align with a pre-mapped trajectory, making use of all six axes, the **Robotic Visualization System**<sup>®</sup> delivers precise positioning at the push of a button. Putting you exactly where you need to be – when you need to be there.

### PositionMemory



Save

Move

Recall

When working on a tumor case, you may already have identified regions of concern where you want to protect the functional structure. After storing these in **PositionMemory**, you can come back and visualize them at the exact same magnification, working distance and focus – without losing time for manual repositioning. In a nutshell: **Save. Move. Recall.**

### Image-guided surgery

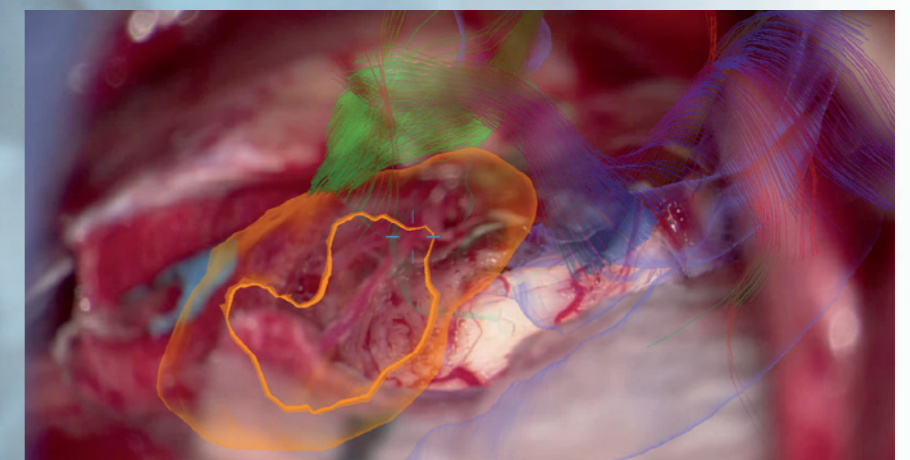


Image with Brainlab Microscope Navigation Software

Minimize time-consuming efforts in approaching challenging neurosurgical pathologies. Combine the **Surgeon-Controlled Robotics** of ZEISS KINEVO 900 with navigation interface to approach deep-seated pathologies in cranial surgery, brain stem or skull base tumor removals – **right when you need it.**

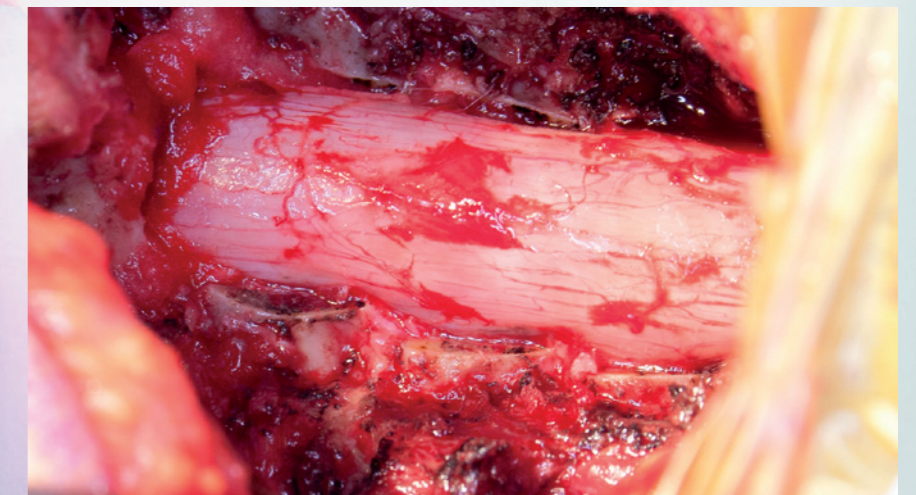


## New dimensions. Freedom of choice.

Working through oculars at extreme angles can sometimes be a pain in the neck. Literally. With no way out, you might have to contend with uncomfortable working positions causing fatigue. Now, relief and revolutionary dimensions in visualization are in sight.

The **Digital Hybrid Visualization** with integrated 4K technology of ZEISS KINEVO 900 welcomes you to a world of heads-up ocular-free surgery, giving you freedom of movement. And freedom of choice to use an optical setup, depending on the application need.

### Fully integrated 4K camera technology



During lateral lumbar or thoracic spine and posterior fossa approaches, ZEISS KINEVO 900's integrated 4K visualization can be essential. It provides you with multimodal visualization capabilities – the flexibility to decouple from the classic optical approach and to work with outstanding 4K picture quality and clarity. Even when magnifying tiny details.

What's more... your assistant surgeon, OR staff and residents also benefit from the 4K visual clarity of ZEISS KINEVO 900. They share the same high-resolution, digital image to follow the procedure with comparable fidelity. Delivering indispensable education and training.



## Critical challenge. Vital solution.

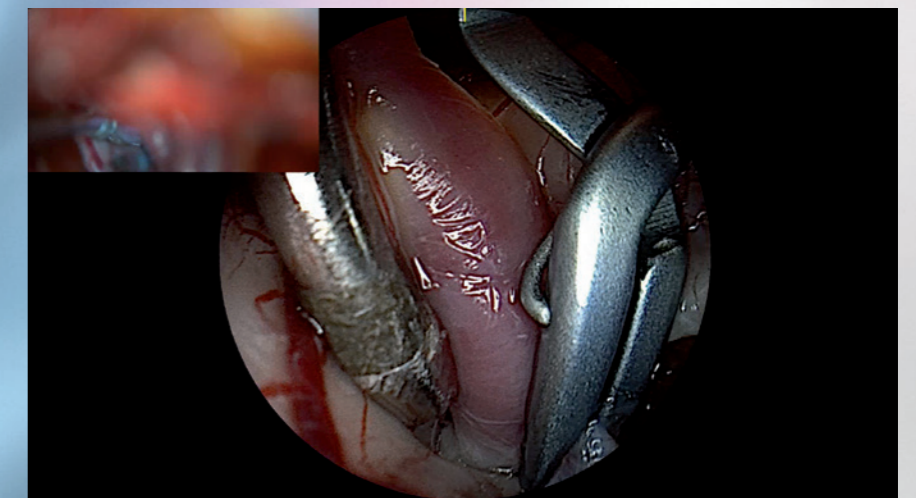
Your challenge: When working from an external perspective of a surgical microscope, your visualization of the anatomy is limited to a straight line of sight – missing critical information behind tissue or corners. Efficient and effortless access to this comprehensive information is essential for treatment.

Our solution: **QEVO® from ZEISS**

The unique, proprietary **Micro-Inspection Tool** from ZEISS complements intraoperative microsurgical visualization, enabling you to discover unexplored areas during the surgical intervention without additional footprint. You can look around corners and eliminate blind spots. And most importantly, you can gain greater insights – for better clinical decisions.

To support your surgical workflow, ZEISS QEVO is engineered with an angled design – keeping your hands out of the line of sight during insertion in the surgical field. And, it allows for an easy fit between the ZEISS KINEVO 900 and the situs, eliminating the need to reposition the head of the device.

### Greater insights, on demand.



ZEISS QEVO enables you to inspect the perforator or examine the distal neck of the aneurysm to ensure the clip blades are fully extended.



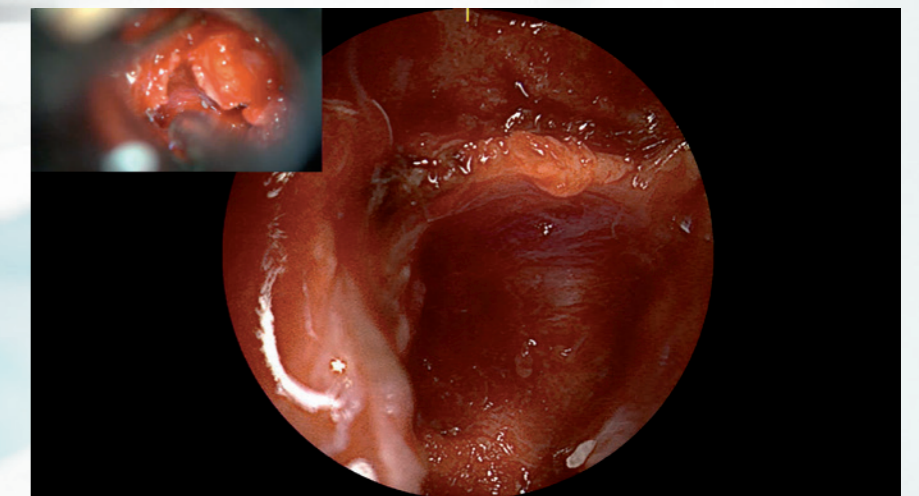
## Ease of use. Peace of mind.

Surgical certainty is your imperative. Enabling you to achieve it is ours. That's why, in the development of the Micro-Inspection Tool, we placed a high priority on its ease of use.

**ZEISS QEVO** is truly integrated. You don't have to plan for an additional device during surgery. Just plug it into your ZEISS KINEVO 900 for a seamless surgical workflow and to easily switch back and forth between views.

**ZEISS QEVO** is fully autoclavable. So there's no need for any additional draping. This is another attribute that makes ZEISS QEVO an indispensable tool – always available during surgery. On demand.

### ZEISS QEVO. Innovation in action.



ZEISS KINEVO 900 can support discerning regions that are not directly visualized – avoiding unnecessary bone removal and retraction. During a Vestibular Schwannoma case, for instance, it can help identify the course of facial nerves. And, can support inspection of regions that are not directly visualized by a surgical microscope.

## Deeper insights. Greater control.

Imagine being able to identify the blood flow in the tiniest blood vessels with an intraoperative angiogram during any vascular procedure. Or to analyze the blood flow dynamics in real time. Or to visualize fluorescence-stained structures while viewing the anatomy in natural-like colors. Or, all of the above with one system!

In challenging neurosurgery, visualization adjuncts are essential for making the right decisions at the right time. The redesigned Intraoperative Fluorescence Technologies from ZEISS offer you the **Power of Four** – so you are always equipped with the tools you need. **Check. Interpret. Decide.**

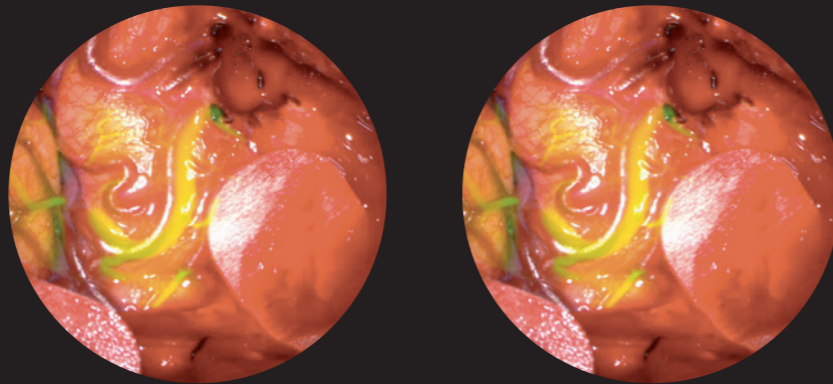
### ZEISS INFRARED 800 – Now in HD resolution

Intraoperative visual assessment of blood flow and vessel patency during aneurysm, bypass and AVM surgery is critical to your treatment. During such complex vascular procedures, the new high definition visual quality of ZEISS INFRARED 800 enables visualization of sub-millimeter blood vessels – for deeper insights into the blood flow dynamics.



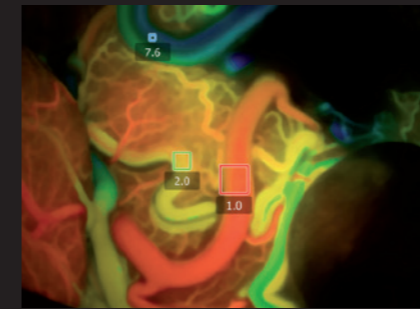
### Virtually uninterrupted focus. Always.

ZEISS KINEVO 900 optimizes the workflow to deliver a live overlay of the ZEISS INFRARED 800 image in the oculars – for a virtually uninterrupted workflow.

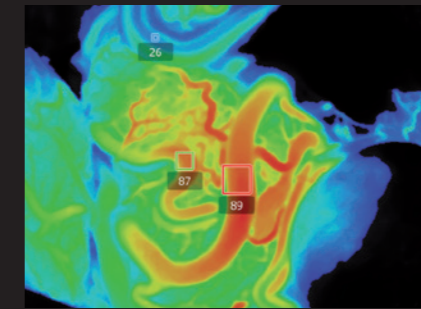


### ZEISS FLOW 800

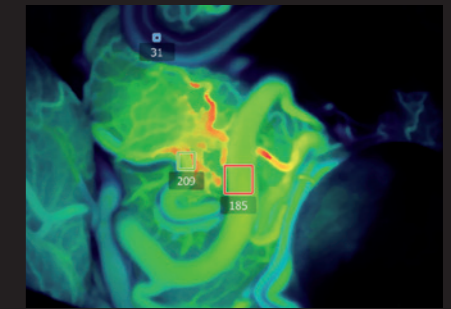
FLOW® 800 from ZEISS is a unique analysis tool generating blood flow dynamics data by identifying detailed vessel blood flow from INFRARED 800 video sequences – intraoperatively. The newly transformed ZEISS FLOW 800 delivers a more convenient visual assessment of the increase in the fluorescence intensity during the procedure.



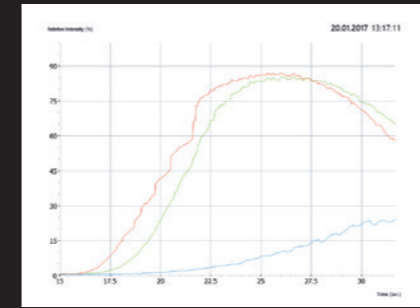
*For the indicative time:* The Delay Map (or Summary Map) provides quick information about the time when the fluorescent signal appeared for each image point in the map.



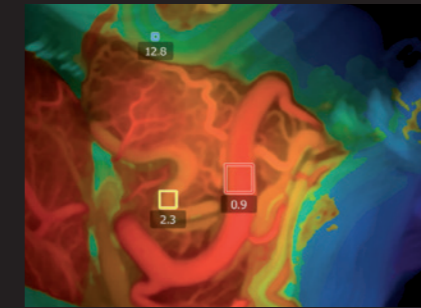
*For the fluorescence distribution:* The Intensity Map enables you to conveniently identify relative fluorescence levels reached during the INFRARED 800 observation period.



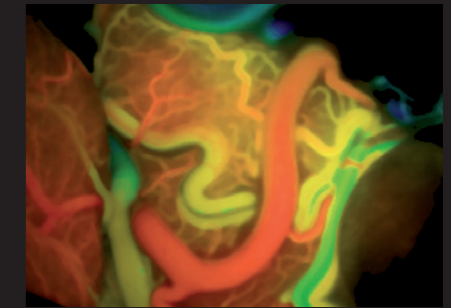
*For the speed of the flow:* The Speed Map indicates how fast the fluorescence intensity increased during the observation period – indicating the speed of the blood flow.



*For a complete picture:* The Diagram Function outlines assessment of fluorescence intensity variation over time and fast access to the key indicators for further analysis.



Before



After

*For no compromises:* The new optimized view option enables you to generate summaries from a selected sequence of the INFRARED 800 video. For instance, removing video sequences with movement artefact, you can now generate a summary map without compromises. So, you can get the most vivid and helpful representation of your procedure – for the right decisions and convincing podium talks.

### ZEISS BLUE 400<sup>1</sup>

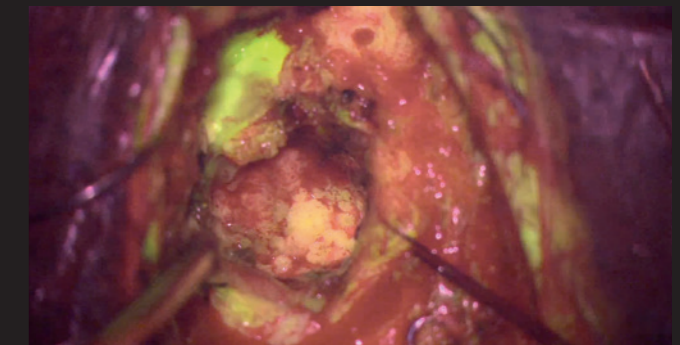
BLUE 400 is an accessory for a Class 1 surgical microscope. It is capable of supporting fluorescence-based surgery by providing visualization in the 620–710 nm range in HD quality.



Visualization of fluorescence-stained structures using BLUE 400 during surgery.

### ZEISS YELLOW 560<sup>1</sup>

ZEISS YELLOW 560 is cleared as an accessory to a Class 1 device for the visualization of blood flow. It is the first intraoperative fluorescence module to highlight the fluorescence-stained structures while visualizing non-stained tissue in its natural-like color.




Visualization of fluorescence-stained structures using YELLOW 560.



## Setting new benchmarks. Shaping a new future.

When we envisioned the all-new **Robotic Visualization System**, we conceived a design that can deliver so much more without losing its familiarity. With ZEISS KINEVO 900, we continue to live our vision of supporting you in becoming one with your visualization system – of delivering purposeful innovations.

Among scores of leading-edge innovations , here are the ones that matter the most for you.

**The Robotic Visualization System:** The first of its kind.

### Surgeon-Controlled Robotics

Delivering precise positioning with a lot less effort – with motors in all axes.

### ZEISS QEVO – The Micro-Inspection Tool

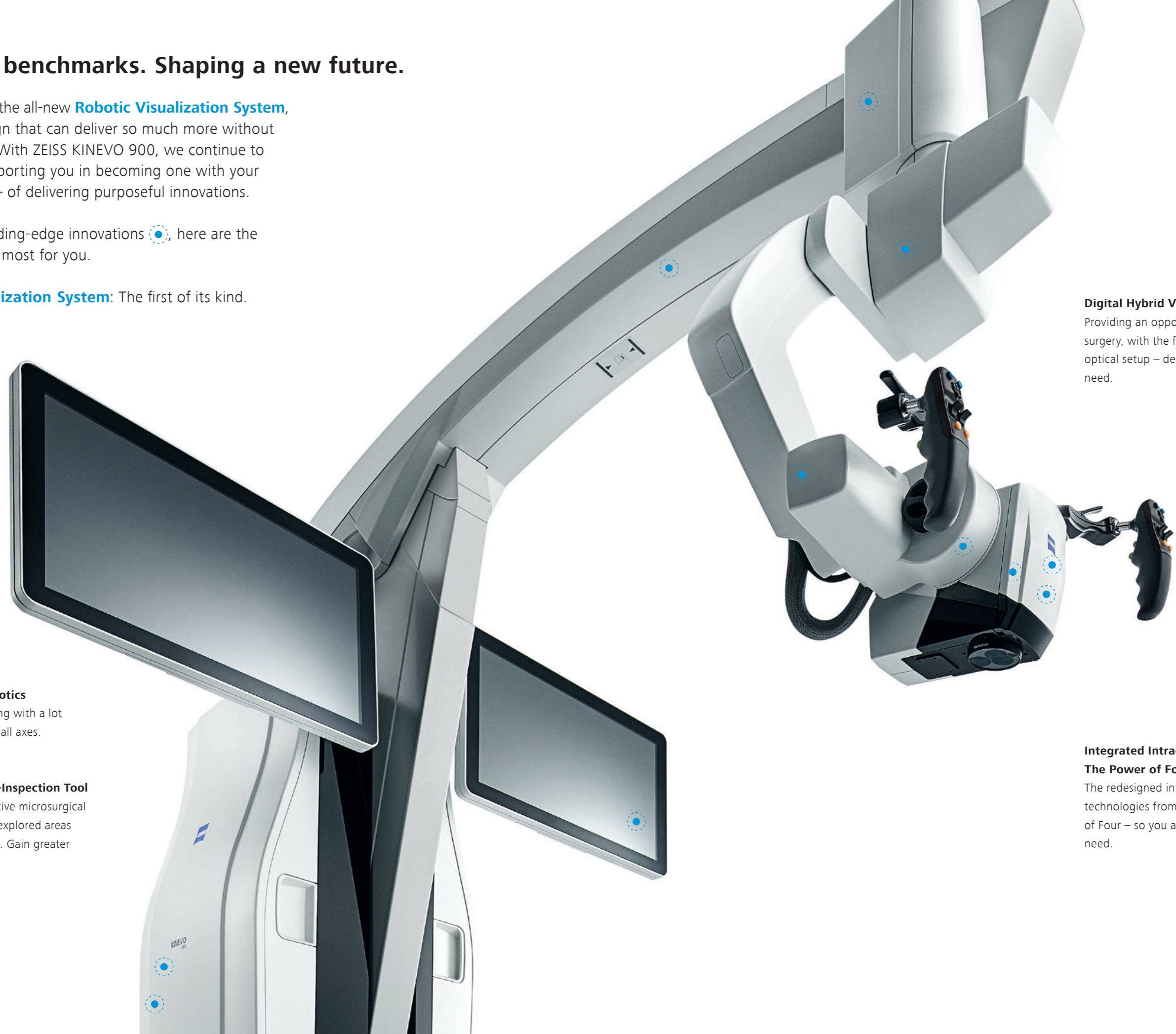
Complementing intraoperative microsurgical visualization to discover unexplored areas during surgical intervention. Gain greater insight. On demand.

### Digital Hybrid Visualization

Providing an opportunity for ocular-free surgery, with the freedom to use a traditional optical setup – depending on the application need.

### Integrated Intraoperative Fluorescence – The Power of Four.

The redesigned intraoperative fluorescence technologies from ZEISS offer you the Power of Four – so you always have the tools you need.



## Digital connectivity. Transforming OR's.

Neurosurgery, in particular, is a technologically intensive surgical discipline. This has pushed us toward the edge of transformation: to develop leading digital technologies enabling you to expand the boundaries of surgical care – to the next level.

### ZEISS KINEVO 900 offers full digital connectivity.

Manage surgical data wherever you are: **ZEISS Connect App**<sup>1</sup> enables you to access your surgical data from your iOS device, and also delivers dedicated functionalities for efficient workflows.

Take teaching to new heights: **ZEISS Observe App** enables you to virtually broadcast your procedure in the OR. Your students can follow the live surgery directly on mobile screens or immerse themselves in a rich VR Experience.

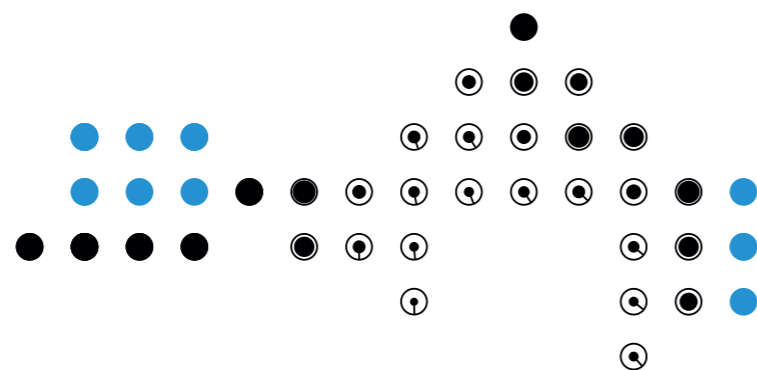
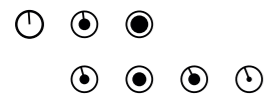
Gain value with new digital services: **ZEISS Smart Services** enables faster support for you and your team with remote connectivity. Benefit from the increased system availability powered by a secure connection to your ZEISS KINEVO 900.



ZEISS Connect



ZEISS Observe



<sup>1</sup> Available soon

## Connecting simplicity and innovation.

### ZEISS SMARTDRAPE

Your visualization needs are paramount to us. And, so are the needs of your team. That's why we gave a special focus to the OR preparation process in the development of ZEISS KINEVO 900.

Being an integral part of the optical path, the SMARTDRAPE with VisionGuard® from ZEISS is designed together with ZEISS KINEVO 900 so you and your team can have the benefits of a vivid view, and effective patient protection. At the same time – the new innovations make the draping process simply simple!

- Innovative folding: to eliminate guesswork and complexity.
- Intuitive attachment: for an effortless and simple self-locking mechanism.
- Integrated RFID chip: for easy activation of AutoDrape®.

**Designed for ZEISS KINEVO 900.**



## Support whenever you need it.

### ZEISS OPTIME

If you rely on high system availability, consider our ZEISS OPTIME service agreements, which are designed to ensure the readiness of our medical equipment when you need it.

ZEISS OPTIME service agreements for ZEISS KINEVO 900 now come with connectivity for ZEISS Smart Services.

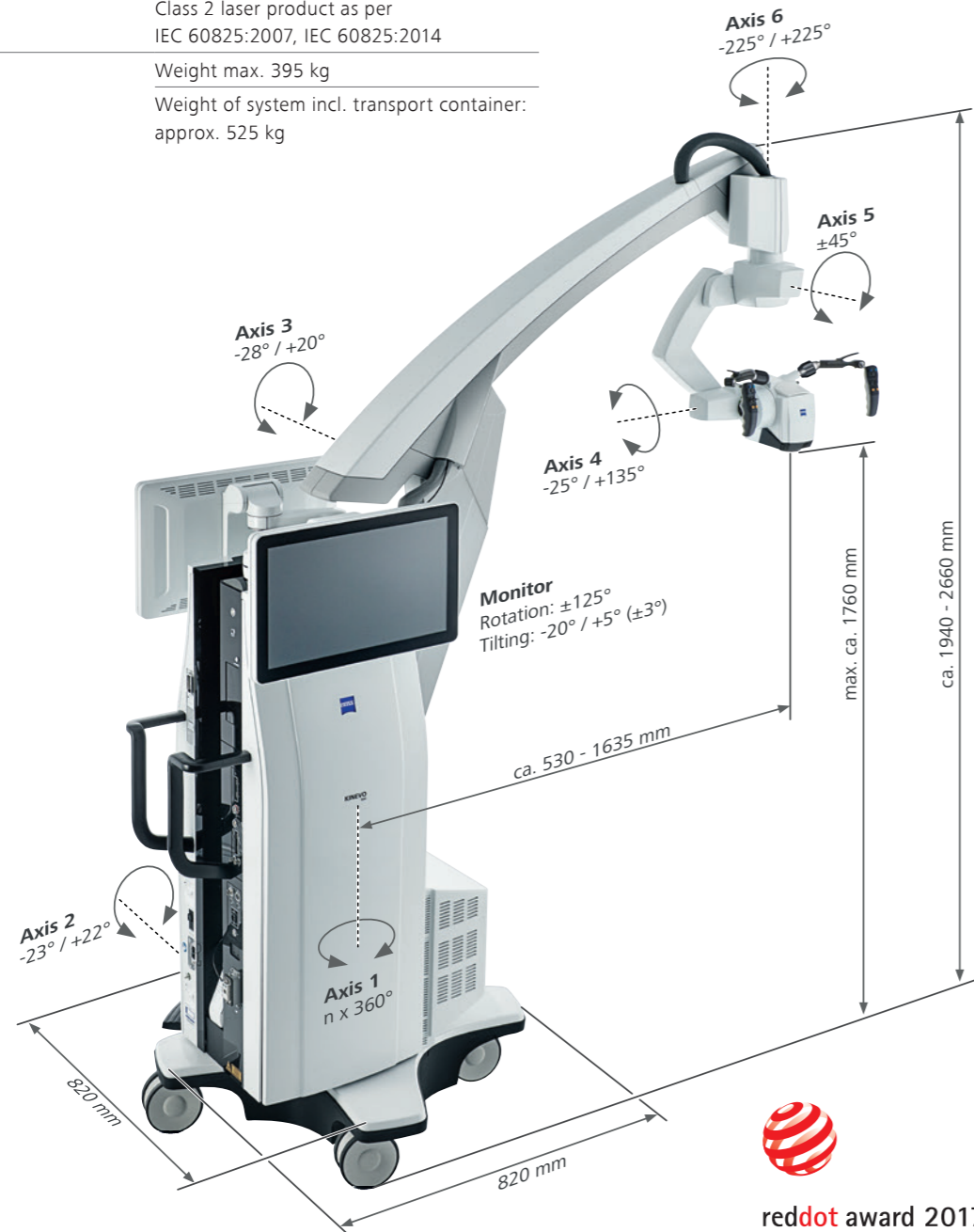


## Technical Data

### KINEVO® 900 from ZEISS

#### Technical Data

Rated Voltage	100 V – 240 V
Current Consumption	Max. 1.350 VA
Rated Frequency	50 Hz – 60 Hz
Electrical Standard	Complying with IEC 60601 1:2005+A1:2012 Protection class I, degree of protection IP20 Class 2 laser product as per IEC 60825:2007, IEC 60825:2014
Weight	Weight max. 395 kg Weight of system incl. transport container: approx. 525 kg



## QEVO® from ZEISS and QEVO ECU

#### Technical Data

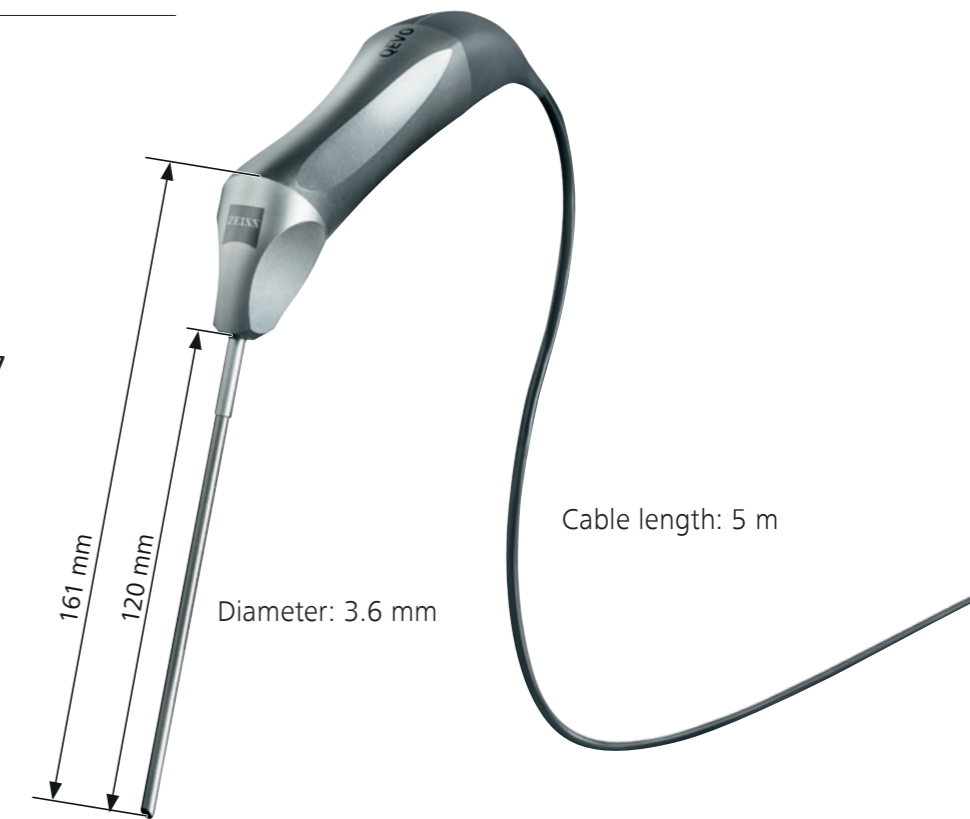
Direction of View	45° upwards
Shaft Diameter	3.6 mm
Shaft Length	120.0 ± 1.0 mm
Total Diameter	13.0 mm
Field of View	100° ± 5° wide angle view
Illumination	20 – 35 lumen LED
Weight (without cable)	250 g
Sterilization	Autoclavable
Image Resolution	1920 x 1080 pixel full HD
Length of Cable	5000 mm
Operation Temperature	+10 to +40 °C (500/1000 s intermittent use)

#### QEVO ECU

Dimensions	Length = 265.0 ± 1 mm, height = 59.3 ± 1 mm and depth = 212.2 ± 1 mm
Weight	2.5 kg
Operating Voltage	24V (+/- 10%) ADC
Video Output	DVI-D full HD



reddot award 2017 winner



## Technical Data

Apochromatic Optics	Motorized focus; Varioskop® with working distance 200 – 625 mm	Video	Stereo video camera 3D HD, fully integrated, 2 x 3-chip HD, 1080p incl. 2 <sup>nd</sup> HD 3D monitor
	Motorized zoom; zoom ratio 1:6, magnification factor $y = 0.4x - 2.4x$		4K video camera, fully integrated 3-chip 4K, 2160p
	10x magnetic wide field eyepieces with integrated eyecups		Stereo video camera 4K 3D, fully integrated, 2 x 3-chip 4K, 2160p, incl. 2 <sup>nd</sup> HD 3D monitor
	AutoFokus with 2 visible laser dots, automatic mode with magnetic brakes		Integrated HD video recording, with SmartRecording, low-Resolution recording, editing and streaming
Illumination	2 x 300 W Xenon, with automatic lamp exchange	Intraoperative Fluorescence	2 <sup>nd</sup> system monitor HD 2D
	Automatic Iris Control for adjusting the illumination to the field of view		Attachment for consumer (SLR) photo camera
	Individual light threshold setting		External 55" 4K 3D video monitor, with mobile cart
	Focus Light Link: working distance controlled light intensity		BLUE 400
	Manual adjustment of diameter of field of illumination		INFRARED 800
	Additional illumination beam to brighten up shadows, motorized		INFRARED 800 Compact
System Operation	Multifunctional programmable handgrips	Connectivity/ Data Management	INFRARED 800 with FLOW 800
	Magnetic clutches for all system axes		YELLOW 560
	Central user interface with full-screen video		DICOM module for image and video data transfer from/to PACS. Patient management by modality worklist management.
	XY robotic movement in 6 axes (variable speed)		Shared Network Data storage
	Active damping		WLAN option, with WiFi Hotspot
	Manual and motorized PointLock function with variable speed	Accessories	Navigation Interface Standard
	PositionMemory		Navigation Interface Extended
	Motorized XY lateral movement with variable speed		ZEISS QEVO and QEVO ECU
	MultiVision System (HD), with shutter control		12.5x magnetic wide field eyepieces with integrated eyecups
	AutoBalance		Stereo co-observation tube
System Setup	AutoDrape – air evacuation system <sup>1</sup>	Video	Foldable Tube f170/f260, including the PROMAG function for additional 50% magnification and integrated rotate function
	Park Position		Tilttable binocular tube, swivel range 180°, focal length $f = 170$ mm
	Drape Position		14-function, wired foot control panel
			14-function, wireless foot control panel
Video	Integrated 3-chip Full HD video camera, 1080p	Connectivity / Data Management	2-function foot switch
	24" HD video touchscreen on extendable arm, 16:9 aspect ratio		Mouth switch
	Integrated still image capturing both on HDD and USB-media		3-step magnification changer
Connectivity / Data Management	Video-in for external HD video sources	Sterile Drape	
	Remote diagnosis via internet/VPN		ZEISS SMARTDRAPE

<sup>1</sup> Available with ZEISS SMARTDRAPE only.

## Your needs. Our packages.

Select a ZEISS KINEVO 900 built to fit your typical clinical use-cases. ZEISS KINEVO 900 comes with pre-defined packages giving you a head start in planning the most suitable configuration for your specific needs.

**Interested in digital visualization?** Check out the digital package. That's our commitment to cover you for tomorrow while keeping your present needs into focus.

Configuration / Options	Standard	Comfort	Premium	Digital
Main tube	Tilttable tube 180°	●	–	–
	Foldable tube with Promag	–	●	●
EyePieces	Eyepieces 10x	○	○	○
	Eyepieces 12,5x	○	○	○
Coobservation	Coobservation left/right	○	●	●
	Coobservation Face-to-face	○	●	●
Fluorescence Option / QEVO	IOF Preparation	○	●	■
	BLUE 400	○	○	○
	YELLOW 560	○	○	○
	INFRARED 800 Compact	○	–	–
	INFRARED 800	○	○	●
	FLOW 800	–	○	○
	QEVO	○	●	●
Video Options	QEVO Handpieces and Trays	○	○	○
	HD camera (3-chip)	●	○	–
	HD 3D camera (2x 3-chip)	–	○	–
	4K camera (3-chip)	–	○	–
	4K 3D camera (2x 3-chip)	–	–	●
	Video Recording	●	●	●
	Integrated second video monitor 2D	○	○	–
	Integrated second video monitor 3D	–	○	●
	4K 3D Monitor with procart	○	○	○
	Canon DSLR Kit	○	○	○
Connectivity	ZEISS Smart Services	●	●	●
	Navigation Interface	○	○	●
	DICOM Package	–	○	○
	Shared Network Package	○	●	●
	WLAN Network Package	○	○	●
Other accessories	Mouthpiece	○	○	●
	Foot control panel, 14 functions, wired or wireless	○	○	●
	Foot switch, 2 functions	○	○	○
	Magnification Extender 3-step	○	○	○

● always included ■ always included as INFRARED 800 only ○ optional

*View of the cerebellar tonsils and medulla.* Image courtesy of Dr. Robert F. Spetzler, Barrow Neurological Institute, Phoenix, Arizona, USA. (Cover page)  
*View onto cerebellum and lower cranial nerves.* Image courtesy of Dr. Robert F. Spetzler, Barrow Neurological Institute, Phoenix, Arizona, USA. (Page 2)  
*Front temporal area for STA-MCA bypass procedure.* Image courtesy of Dr. Peter Nakaji, Barrow Neurological Institute, Phoenix, Arizona, USA (Page 2)  
*View onto optic nerve and internal carotid artery.* Image courtesy of Dr. Peter Nakaji, Barrow Neurological Institute, Phoenix, Arizona, USA (Page 4)  
*Image-guided surgery.* Image courtesy of BrainLab AG (Page 6 and 7)  
*View onto spinal cord dura.* Image courtesy of Dr. Robert F. Spetzler, Barrow Neurological Institute, Phoenix, Arizona, USA (Page 8 and 9)  
*Small view of the cerebellum through the Retrosigmoid Approach.* Image courtesy of Dr. Peter Nakaji, Barrow Neurological Institute, Phoenix, Arizona, USA (Page 10)  
*Left mini-pterional approach for clipping an aneurysm.* Image courtesy of Dr. Peter Nakaji, Barrow Neurological Institute, Phoenix, Arizona, USA (page 11)  
*View onto corpus callosum and septum pellucidum.* Image courtesy of Dr. Peter Nakaji, Barrow Neurological Institute, Phoenix, Arizona, USA (Page 12)  
*Transnasal transsphenoidal for re-exploration and excision of recurrent pituitary Macroadenoma with possible abdominal fat.* Image courtesy of Dr. William White, Barrow Neurological Institute, Phoenix, Arizona, USA (Page 13)  
*Right temporal Craniotomy for AVM.* Image courtesy of Dr. Robert F. Spetzler, Barrow Neurological Institute, Phoenix, Arizona, USA (Page 14 and 15)  
*Glioma surgery using BLUE 400.* Image courtesy of Prof. Dr. Walter Stummer, University Clinic, Münster, Germany (Page 15)  
*Left-temporal craniotomy for tumor resection with YELLOW 560.* Image Courtesy of Dr. Peter Nakaji, Barrow Neurological Institute, Phoenix, Arizona, USA. (Page 15)

**SUR. 8733 Rev D** Printed in the United States. CZ-IV/2019 United States Edition. Only for sale in selected countries.

The contents of the brochure may differ from the current status of approval of the product or service offering in your country. Please contact our regional representatives for more information.  
Subject to changes in design and scope of delivery and due to ongoing technical development. Robotic Visualization System, KINEVO, QEVO, FLOW, AutoDrape, Varioskop and VisionGuard are either trademarks or registered trademarks of Carl Zeiss Meditec AG.  
© Carl Zeiss Meditec AG, 2019. All rights reserved.



**Carl Zeiss Meditec AG**

Goeschwitzer Strasse 51–52  
07745 Jena  
Germany  
[www.zeiss.com/med](http://www.zeiss.com/med)  
[www.zeiss.com/kinevo](http://www.zeiss.com/kinevo)



**Carl Zeiss Meditec, Inc.**

5160 Hacienda Drive  
Dublin, CA 94568  
USA  
[www.zeiss.com/med/us](http://www.zeiss.com/med/us)