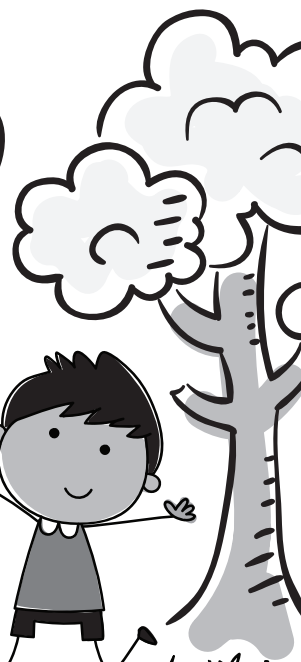


Jefferson County Public Schools



Summer ADVENTURES 2019



The summer programs, camps, and other educational opportunities listed in this brochure are offered by local community and cultural organizations for Louisville-area students. They are designed to promote and enhance real-world experiences and nurture and support lifelong learning.



Table of contents

Sponsoring Organization	Page No.
Belle of Louisville	3
Blackacre State Nature Preserve	8
Club SciKidz Science and Technology Summer Day Camps	10
Drama by George	5, 6
Frazier History Museum	10
Gheens Science Hall and Rauch Planetarium	11
KMAC Museum.....	4
Kentucky Science Center	11
Kentucky Shakespeare	6
Looking for Lilith Theatre Company	6, 7
Los Monitos Language Company	3, 5
Louisville Ballet School.....	5
Louisville Nature Center.....	8, 10
Louisville Zoo	9
Louisville Parks and Recreation	9
Louisville Visual Art	4
Presentation Academy Summer Art Camp	4
Second Chances Wildlife Center	10
Silver Lining Stable.....	9
Squallis Puppeteers.....	7
StageOne Family Theatre.....	7
Summerbridge Louisville	7

Adventure

International Adventure Camps

Sponsoring Organization: Los Monitos Language Company

Contact Person: Camps director, (502) 893-0933, camps@losmonitos.com

Grades: Ages 6–10 and 8–12 (See below.)

Content Standards: Arts (dance, media arts, music, theatre, visual arts), English/Language Arts, Social Studies, Technology, World Languages

Who: Children ages 6–10 and 8–12; no previous knowledge of foreign language or travel is required.

What: Seven International Adventure Camps are offered, ranging from experiencing the high seas as a Spanish pirate, to the popular International Spy Camps, to international broadcasting and film in Multimedia Camps. These engaging camps will expose campers to foreign language, culture, and geography while they interact with native speakers!

When:

- **June 17–21:** La Tournage—French Film Crew (ages 8–12)
- **June 24–28:** I.S.C. Europe (ages 8–12)
- **July 1–3:** Los Piratas (ages 6–10)
- **July 8–12:** I.S.C. Asia (ages 8–12)
- **July 22–26:** I.S.C. Circle the Globe (ages 8–12)
- **July 29–Aug. 1:** Global News Network (ages 6–10)
- **July 29–Aug. 1:** Los Artistas (ages 6–10)

Where: 503 Washburn Avenue, Suite 201, 40222

Transportation: No

Cost: \$189 each

Registration: www.losmonitos.com/summercamps; call (502) 893-0933 with any questions.

Summer Cruises on the Belle of Louisville



Sponsoring Organization: Belle of Louisville

Contact Person:

Reservations: Call the Belle office at (502) 574-2992.

Education: Kadie Engstrom, education coordinator (Call for specific historic and educational information, resources, or questions.)

Grades: All ages

Content Standards: Arts (dance, media arts, music, theatre, visual arts), English/Language Arts, Environmental Education, Mathematics, Science, Social Studies, Technology

Who: All students, teachers, school personnel, and families

What: Cruise on the oldest operating steam-powered river vessel of her kind in the world. It's an exciting adventure, and it's fun and educational too! Bring your friends and family, and be ready to explore an original paddlewheel steamboat that's more than 100 years old and one-of-a-kind!

When: Memorial Day to Labor Day: Friday, Saturday, and Sunday afternoons. Boarding Friday and Saturday at 11:30 a.m., cruising 12 noon–2 p.m.; boarding Sunday at 12:30 p.m., cruising 1–3 p.m. Cruises are available on weekends in the fall. Call for information, or check out the schedule on www.belleoflouisville.org.

Where: 401 West River Road, Louisville, KY

Transportation: Not provided, but parking is close by. A bus route goes to the Galt House at 4th and Main; then it's a short walk down to the Belle's wharf.

Cost: Call for information. Prices vary for tickets with or without the optional buffet lunch.

Registration: Call the Belle of Louisville office at (502) 574-2992, or a (866) 832-0011 (toll free), or purchase tickets online. For educational needs, contact Kadie Engstrom through the Belle office.

Summer Field Trips on the Belle of Louisville



Sponsoring Organization: Belle of Louisville

Contact Person: Reservations: Betty Cissell;

Education: Kadie Engstrom

Grades: K–5

Content Standards: Arts (dance, media arts, music, theatre, visual arts), English/Language Arts, Environmental Education, Mathematics, Practical Living (PE, health, consumerism, career studies), Science, Social Studies, Technology

Who: Students, teachers, chaperone parents

What: This is an exceptional opportunity to have students experience the oldest operating river steamboat in the country. Educational materials are available. Many social studies content connections are possible; this is also a cross-curriculum approach with elements of art, science, math, and language arts. Kadie Engstrom, education coordinator, can help connect the experience to your school curriculum.

When: Dates to be determined; call for information. Boarding 10:30 a.m., cruising 11 a.m.–12:30 p.m.

Where: Fourth Street Wharf, 4th Street and River Road, downtown Louisville. Mailing address is 401 West River Road, Louisville, KY 40202. GPS systems do not get people to us easily, so call for directions or check out directions on our website, www.belleoflouisville.org.

Transportation: Not provided, but city buses have a drop-off stop at 4th and Main (a walking distance of two blocks). School buses can park free in front of the boat.

Cost: Students: \$7. One adult for every ten students is free; additional adults are \$12 in advance.

Registration: Call the *Belle of Louisville* office, and ask for group sales, (502) 574-2992.

For educational needs, contact Kadie Engstrom through the *Belle* office.



KMAC Museum Summer Art Camps

Sponsoring Organization: KMAC Museum

Contact Person: Mary Clore, mclore@kmacmuseum.org

Grades: K–8

Content Standards: Arts (dance, media arts, music, theatre, visual arts), English/Language Arts, Environmental Education, Mathematics, Science, Social Studies

Who: Students ages 5–14

What: This summer at KMAC, get your hands messy with Sculptacular Camp, where campers will be introduced to sculpture and inspired to create their own. In Art Exploration Camp, campers will learn about an array of different art media. Teen artists can wonder, discover, and create among nature at Blackacre Camp.

When:

- **June 10–14:** Sculptacular: Sculpture and Clay Camp, ages 5–8
- **June 17–21:** Sculptacular: Sculpture and Clay Camp, ages 8–11
- **June 24–28:** Blackacre: Art-in-Nature Camp, ages 11–14
- **July 8–12:** Sculptacular: Sculpture and Clay Camp, ages 5–8
- **July 15–19:** Art Exploration: Mixed Media Camp, ages 5–8
- **July 22–26:** Art Exploration: Mixed Media Camp, ages 8–11

Full-day 9 a.m.–4p.m.; half-day mornings 9 a.m.–12 noon; or half-day afternoons 1–4 p.m.

Drop-off: 8:30–9 a.m., pickup: 4–4:30p.m.

Where: KMAC Museum, 715 W. Main Street, Louisville, KY 40202, and Blackacre Conservancy, 3200 Tucker Station Road, Louisville, KY 40299

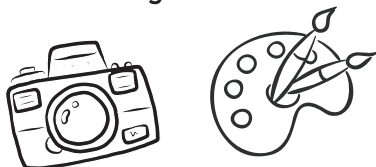
Transportation: No

Cost: Sculptacular and Art Exploration: \$230/week (full day), \$115/ week (half day)

Blackacre: \$245/week

Registration: Visit www.kmacmuseum.org/camps.

For more information, send an email to education@kmacmuseum.org.



Louisville Visual Art Summer Art Camps



Sponsoring Organization: Louisville Visual Art (LVA)

Contact Person: Annette Cable, annette@louisvillevisualart.org

Grades: 2–8 (ages 7–14)

Content Standards: Arts (dance, media arts, music, theatre, visual arts)

Who: Young artists ages 7–14

What: Join LVA for our exciting Summer Art Camps, including Stop-Motion Animation, Digital Photography, Painting Lab, Creature Feature, Comic Art, and Cardboard Laboratory. Highly qualified artist instructors teach students to stretch their imaginations, master new techniques, and explore exciting materials. Come spend the summer creating!

When: Weekly, **June 10–August 2**, 9 a.m.–4p.m.

Where: Holy Trinity Clifton Campus (formerly Clifton Center), 2117 Payne St., Louisville, KY 40206

Transportation: No

Cost: \$230/regular day; \$280/extended day; \$180/mornings only

Registration: www.louisvillevisualart.org/camps-workshops

Presentation Academy Summer Art Camp



Sponsoring Organization: Presentation Academy

Contact Person: Susanne Firestone, sfirestone@presentationacademy.org

Grades: 1–9

Content Standards: Arts (dance, media arts, music, theatre, visual arts)

Who: Children in grades 1–9

What: Would you like to travel around the world in five days, learning about different holidays, crafts, and ways to create art? This camp features different types of art making, while focusing on specific cultures around the globe. Participants will explore a different country or culture each day and create a piece of artwork inspired by that particular place or group.

When: **June 24–28**, 9 a.m.–12 noon (grades 5–9) and 1–4 p.m. (grades 1–4)

Where: Presentation Academy, Arts and Athletic Center, 900 S. 4th Street, Louisville, KY 40203

Transportation: No

Cost: \$125

Registration: To register, please click on the link and select the appropriate grade level art camp: www.presentationacademy.org/store/c5/Summer_Camps.html.

Cooking

International Cooking Camps

Sponsoring Organization: Los Monitos Language Company

Contact Person: Camps director, (502) 893-0933, camps@losmonitos.com

Grades: Ages 6–10

Content Standards: Arts (dance, media arts, music, theatre, visual arts), English/Language Arts, Social Studies, World Languages

Who: Children ages 6–10; no previous knowledge of foreign language or travel is required.

What: Five International Cooking Camps are offered: Spanish Cooking, French Cooking, European Cooking, Asian Cooking, and—new this year—Italian Cooking! Little Chefs will work alongside native-speaking guest chefs learning about and preparing authentic regional dishes. They will be exposed to language, culture, and geography and enjoy the fruits of their labor.

When:

- June 17–21: Spanish Cooking
- June 24–28: European Cooking
- July 8–12: Italian Cooking
- July 15–19: French Cooking
- July 22–26: Asian Cooking

Where: 503 Washburn Ave., Suite 201, 40222

Transportation: No

Cost: \$189 each

Registration: www.losmonitos.com/summercamps, (502) 893-0933

Dance

Louisville Ballet School Summer Semester Programs

Sponsoring Organization: The Louisville Ballet School

Contact Person: Christy Corbitt Krieger, school principal

Grades: PreK–12

Content Standards: Arts (dance, media arts, music, theatre, visual arts)

Who: Students ages 3–18 who are interested in dance, movement, and the arts

What: The Louisville Ballet School offers camps, classes, and workshops for those just beginning their dance journey and for those who have a growing passion for dance. With so

many options and nine weeks of programming, you are sure to find the perfect program for you!

When: Various sessions available June 3–August 2. Visit louisvilleballetschool.org for specific session dates and times.

Where: Louisville Ballet School, St. Matthews Studio, 4121 Shelbyville Road, 40207 and Louisville Ballet, Downtown Studio, 315 E. Main Street, 40202

Transportation: No

Cost: Varies by session: \$50 (Single-Day PreK/K camp); \$65–\$170 (weekly classes)*; \$210–\$475 (camps and intensives)*; \$100 (Master Class Series)

*\$30 registration fee applicable for new enrollments

Registration: Submit registrations online via email to school@louisvilleballet.org, by fax to 583-0006, or by mail to Louisville Ballet School, 315 E. Main Street, 40202. For questions, call Tara Gardner at 583-3150, Ext. 245.

Drama

Acting Camp for Elementary Students

Sponsoring Organization: Drama by George

Contact Person: George Halitzka, artistic director, (502) 718-5090

Grades: 3–7 (ages 8–12)

Content Standards: Arts (dance, media arts, music, theatre, visual arts)

Who: Kids who want to rehearse and perform a play in just one week!

What: Here's your chance to learn about acting as you rehearse and perform a short play. Find out why theatre is so much fun at Center Stage Drama Camp!

When: June 24–28, 9 a.m.–12 noon daily

Where: Bellarmine University, 2001 Newburg Rd., Louisville, KY 40205

Transportation: No

Cost: \$169

Registration: Register online at www.dramabygeorge.com/camps.



Acting Camps for Middle and High Schoolers

Sponsoring Organization: Drama by George

Contact Person: George Halitzka, artistic director, (502) 718-5090

Grades: 6–11 (ages 11–16); age requirements vary by camp; please see website.

Content Standards: Arts (dance, media arts, music, theatre, visual arts)

Who: Middle and high school students who enjoy acting or comedy

What: Advanced Center Stage Camp: Rehearse and perform a one-act play as you take your acting skills to the next level in this two-week camp for experienced performers.

Comedy Improv Camp: Have a blast learning the basics of comic acting without a script! We'll show you the funny at Comedy Improv Camp!

When: Advanced Center Stage Camp: **July 8–12 and 15–19**, 9 a.m.–3:30 p.m. daily

Comedy Improv Camp: **July 22–26**, 9 a.m.–12 noon daily

Where: Bellarmine University, 2001 Newburg Rd., Louisville, KY 40205

Transportation: No

Cost: Advanced Center Stage Camp: \$349, Comedy Improv Camp: \$169

Registration: www.dramabygeorge.com/camps

Camp Shakespeare at Locust Grove



Sponsoring Organization: Kentucky Shakespeare

Contact Person: Hannah Pruitt

Grades: 2–7

Content Standards: Arts (dance, media arts, music, theatre, visual arts), English/Language Arts, Social Studies

Who: Students ages 7–12 who have a passion to grow as theatre artists in a creative, fun, and engaging environment

What: Our unique camp experience at another exciting location! This customized opportunity will introduce campers to theatre, Shakespeare's works, and how to build an ensemble-based performance piece by emphasizing collaboration and teamwork. Campers will explore the rich history of Locust Grove and grow as artists at the same time!

When: **June 17–21**, 9 a.m.–4p.m.

Where: Historic Locust Grove, 561 Blankenbaker Lane, Louisville, KY 40207

Transportation: No

Cost: \$195

Registration: Visit www.kyshakespeare.com/education/camps for information or kentuckysakespeare.squarespace.com to register.

Camp Shakespeare

Sponsoring Organization: Kentucky Shakespeare

Contact Person: Hannah Pruitt

Grades: PreK–12

Content Standards: Arts (dance, media arts, music, theatre, visual arts), English/Language Arts

Who: For students ages 4–18 who have a passion to grow as theatre artists in a creative, fun, and engaging environment

What: Camp Shakespeare creates opportunities for children and young adults to explore the theatre arts through imaginative play, visual arts, movement, storytelling, language, and more. At the end of each session, campers have the opportunity to perform on the Central Park stage!

When: Various sessions and locations are offered **June 10–July 27**; sessions are 1–5 weeks in length; half-day options are available for ages 4–6.

Where: Main Campus: St. Francis High School, 233 W. Broadway, Louisville, KY 40202

Transportation: No

Cost: \$125–\$495; price varies per camp session and session length.

Registration: Visit www.kyshakespeare.com/education/camps for information and kentuckysakespeare.squarespace.com to register.

GirlSpeak

Sponsoring Organization: Looking for Lilith (LFL) Theatre Company

Contact Person: Jennifer Thalman Kepler, jennifer@lookingforlilith.org, (502) 638-2559

Grades: 4–6 (girls)

Content Standards: Arts (dance, media arts, music, theatre, visual arts), English/Language Arts, Practical Living (PE, health, consumerism, career studies), Social Studies

Who: Girls ages 9–12; we welcome all girl-identifying young people.

What: Girls telling their stories their way! LFL teaching artists will facilitate a one-week workshop using the devising techniques used in creating LFL's professional productions working with participants to craft a play that explores ideas, issues, and themes that are significant to your daughter.

When: **June 24–28**, M–F, 9 a.m.–3p.m.

Where: Crescent Hill United Methodist, 201 S. Peterson Ave., Louisville, KY 40206

Transportation: No

Cost: \$185; sibling discount: Save \$35 on additional registrations.

Registration: <http://lookingforlilith.org/summerdrama/>

The Magic Drum

Sponsoring Organization: Looking for Lilith Theatre Company

Contact Person: Jennifer Thalman Kepler,
jennifer@lookingforlilith.org, (502) 638-2559

Grades: PreK–3

Content Standards: Arts (dance, media arts, music, theatre, visual arts), Practical Living (PE, health, consumerism, career studies), Social Studies

Who: Ages 4–8 (4-year-old prerequisite: previous daycare or preschool experience)

What: What happens when Ijapa the turtle tricks the animals into giving her their drum? The other animals, played by campers, work together to teach Ijapa how hurtful it is to discriminate against others. Campers help finish the story through creative play, visual arts, rhythm, and movement.

When: June 10–14, M–F, 9 a.m.–12 noon

Where: Crescent Hill United Methodist, 201 S. Peterson Ave., Louisville, KY 40206

Transportation: No

Cost: \$160; sibling discount: Save \$35 on additional registrations.

Registration: <http://lookingforlilith.org/summerdrama/>

StageOne Summer DramaWorks Camps

StageOne
FAMILY THEATRE

Sponsoring Organization: StageOne Family Theatre

Contact Person: Hannah Wemitt

Grades: PreK–12

Content Standards: Arts (dance, media arts, music, theatre, visual arts), English/Language Arts

Who: Ages 4–18

What: StageOne Summer Camps offer theme-based summer camps with professional theatre educators. One- to three-week camps available with such themes as mysteries, wizards, movie magic, musical theater, and more! Small class sizes provide individualized instruction with a lot of fun. All camps held at Lincoln Elementary.

When: June 10–Aug. 3, Monday–Friday, 9 a.m.–4 p.m. with extended-day options

Where: Lincoln Elementary Performing Arts School, 930 E. Main Street, Louisville, KY 40206

Transportation: No

Cost: Camps range from \$230–\$600, depending on number of weeks.

Registration: www.stageone.org/kids/camps

Squallis' Sizzling Summer Sessions



Sponsoring Organization: Squallis Puppeteers

Contact Person: Nora Christensen

Grades: K–5

Content Standards: Arts (dance, media arts, music, theatre, visual arts), English/Language Arts, Environmental Education, Practical Living (PE, health, consumerism, career studies), Science, Social Studies

Who: Children ages 5 and up

What: Squallis Puppeteers host three different **one-day** camps this summer that offer in-depth experiences with puppetry. Featuring new themes, new puppet making projects, and fun improvisational games. Create characters from recycling, and bring them to life with funny voices. Themes include Gadgets, Aliens and their Worlds, and Animals and their Habitats.

When:

- Session 1: **July 11**, 10 a.m.–3 p.m.—Gadgets Camp
- Session 2: **July 25**, 10 a.m.–3 p.m.—Aliens and their Worlds
- Session 3: **Aug. 8**, 10 a.m.–3 p.m.—Animals and their Worlds

Where:

Squallis Headquarters, Highlands Community Campus, 1228 E. Breckinridge St., Louisville, KY 40204

Transportation: No

Cost: \$50 each

\$10 early drop-off fee (9–10 a.m. pre-workshop activities)

Registration: www.squallispuppeteers@yahoo.com

Education

Summerbridge Louisville

Sponsoring Organization: Summerbridge Louisville

Contact Person: Kate Lindsay, executive director

Grades: 6–8

Content Standards: English/Language Arts, Mathematics

Who: 80% of our students must come from families who qualify for free and reduced-price meals in Jefferson County Public Schools (JCPS). We are looking for talented middle school students who are beginning to struggle with their academics but are motivated to learn during the summer months.

What: We are a free, six-week summer academic program for underserved middle school students. We place our students in small classrooms (5–8 students) and hire young teachers to help inspire them and give them confidence. All families must fill out an application (on the website: summerbridgelouisville.org) to be accepted.

When: June 10–July 20 (graduation). 8:15 a.m. to 3:45 p.m.

Where: TBD

Transportation: Yes, for most students

Cost: Free

Registration: Apply at summerbridgelouisville.org by May 1.

Environmental

Blackacre Wee Explorers

Sponsoring Organization: Blackacre State Nature Preserve and Historic Homestead

Contact Person: Susan Speece

Grades: K–1 (Ages 4–7; must be potty-trained)

Content Standards: Arts (dance, media arts, music, theatre, visual arts), English/Language Arts, Environmental Education, Mathematics, Practical Living (PE, health, consumerism, career studies)

Who: Children in kindergarten and first grade, ages 4–7 (This camp is great in combination with the Young Explorers for kids with older siblings.)

What: Blackacre Wee Explorers will discover the wonders of nature as campers have the opportunity to take daily hikes through the woods, observe aquatic life at Dragonfly Pond, and interact with the animals and barn life on the homestead! Adventures include building fairy houses in the woods, taking an insect safari, hayrides, feeding animals, making corn husk dolls, playing games, hearing stories, and much more!

When: July 8–12, 9–11:30 a.m.

Where: Blackacre State Nature Preserve and Historic Homestead, 3200 Tucker Station Rd., Louisville, KY 40299

Transportation: No

Cost: \$100/child

Registration: Visit our website at www.blackacreconservancy.org for information on how to register or contact our office at (502) 266-9802.

Blackacre Young Explorers

Sponsoring Organization: Blackacre State Nature Preserve and Historic Homestead

Contact Person: Susan Speece

Grades: 2–4 (ages 7–10)

Content Standards: Arts (dance, media arts, music, theatre, visual arts), English/Language Arts, Environmental Education, Mathematics, Practical Living (PE, health, consumerism, career studies), Science, Social Studies, Technology

Who: Children in grades 2–4 (ages 7–10) (This camp is great in combination with the Wee Explorers for kids with younger siblings.)

What: Campers will explore like a scientist, solve problems like an engineer, and create like an artist as they spend the week discovering the wonders of Blackacre State Nature Preserve and Historic Homestead. Their adventure includes engineering challenges (i.e., building bridges over creeks or making shelters in the woods). They will explore the pioneer homestead with hayrides, feeding animals, and nature crafts. Campers will be amazed at all of the wonders that can be explored in the natural world!

When: July 8–12, 9–11:30am

Where: Blackacre State Nature Preserve and Historic Homestead, 3200 Tucker Station Rd., Louisville, KY

Transportation: No

Cost: \$100/child

Registration: Visit our website at www.blackacreconservancy.org for information on how to register or contact our office at (502) 266-9802.

End of Summer Fun Days

Sponsoring Organization: Louisville Nature Center

Contact Person: Tank Percentie

Grades: PreK–10

Content Standards: Environmental Education, Science

Who: Children, ages 4 to 12, and leaders in training, ages 13+ (Call for details.)

What: There's still time to get in some nature fun with our end-of-summer fun days. Each day has a different theme with a daily hike and exploration, arts and crafts, and fun games. Join us for a day—or for the week!

When: August 5–9, 9 a.m.–4 p.m. (before and aftercare available)

Where: Louisville Nature Center, 3745 Illinois Avenue, Louisville, KY 40213

Transportation: No

Cost: \$32/day for members; \$40/day for nonmembers

Registration: Visit www.louisvillenaturecenter.org/summercamps.

Call us: (502) 458-1328

Email us: educationcoordinator@louisvillenaturecenter.org



Horse Riding and Care Summer Camp



Sponsoring Organization: Silver Lining Stable

Contact Person: Nicole Reason

Grades: 1–8

Content Standards: Environmental Education, Practical Living (PE, health, consumerism, career studies), Science

Who: Children ages 5–15

What: This camp is designed for children from 5 to 15 to be able to safely experience being on a working horse farm. The children learn how to ride, groom, and tack up the horses. We cover basic horse care, riding, grooming, tack, and a variety of other topics that are related to horse care. We will also do horse crafts, swim, and hear from a guest speaker.

When: June 10–14 and July 15–19, 9 a.m. to 3 p.m. (Early drop-off and late pick-up available for a fee)

Where: Silver Lining Stable, 9300 Old Bardstown Rd., Louisville, KY 40291

Transportation: No

Cost: \$375; \$25 discount for early registration and \$50 deposit (April 15); multiple children discount

Registration: www.silverliningstablesky.com, (502) 295-6683, ngtreason@yahoo.com

Jefferson Memorial Forest Summer Camps

Sponsoring Organization: Louisville Parks and Recreation

Contact Person: Jessica Kane, Program Manager

Grades: 1–7

Content Standards: Arts (dance, media arts, music, theatre, visual arts), Environmental Education, Practical Living (PE, health, consumerism, career studies), Science

Who: All kids ages 7–15

What: Join us for a unique day camp experience combining summer fun with nature-based science education activities. We offer a variety of camps for ages 7 to 15. Campers will take on the roles of naturalists, scientists, and adventurers as they explore the forest and the creatures that inhabit it. Traditional summer camp fun will round out the experience, creating an adventure to remember for a lifetime!

What makes Jefferson Memorial Forest Camps special?

- A great counselor-to-camper ratio! We have 2 counselors for every 15 campers.
- A highly trained staff
- Lots of hands-on nature activities
- Active adventures
- Campers learn new skills and build confidence in the natural world.

When: June 10–14, June 17–21, June 24–28, July 8–12, July 15–19, July 22–26, July 29–Aug. 2

Where: Jefferson Memorial Forest, 12400 Holsclaw Hill Rd., Brooks, KY 40109

Shuttle provided from George Rogers Clark Park, 1024 Thruston Ave., Louisville, KY 40217

Transportation: Shuttle available: Drop-off for shuttle riders is located at George Rogers Clark Park, 1024 Thruston Ave. (at Thruston and Poplar Level Rd). Camp leaders will be there to check in campers at 8:15 a.m. Pick-up for shuttle riders will be at 4 p.m.

Cost: \$150–\$200

Registration: <https://louisvilleky.gov/government/jefferson-memorial-forest/forest-summer-camps>

Louisville Zoo Safari Day Camp

Sponsoring Organization: Louisville Zoo

Contact Person: Fred Hougland

Grades: PreK–6

Content Standards: Environmental Education, Practical Living (PE, health, consumerism, career studies), Science

Who: Students who are interested in learning about animals and plants and the interactions of our planet

What: Camps include zoo walks, large animal presentations, attraction rides, and up-close encounters with live animal ambassadors. Get exclusive looks at the zoo's brand new Primate Passage and Snow Leopard Pass exhibits! With extended hours and convenient car line drop-off service, we make it an exciting summer for children and parents!

When: June 10–Aug. 2; Camps are 1 to 2 weeks each, 9 a.m. to 4 p.m. (drop-off: 8–9 a.m., pick-up: 4–5 p.m.)

Where: Louisville Zoo, 1100 Trevillian Way, Louisville KY 40213

Transportation: No

Cost: 1-week camps—\$265/week for zoo members, \$295/week for nonmembers

- 1-week holiday camp—July 1, 2, 3, 5, \$212/week for zoo members, \$236 for nonmembers
- 2-week classes—\$515/week for zoo members, \$575 for nonmembers
- 2-week classes on 4th of July holiday camp—\$464/week for zoo members, \$518/week for nonmembers

Registration: Online registration at <https://louisvillezoo.org/education/public/summercamps/>.

For more information, email zooeducation@louisvilleky.gov or call (502) 238-5358.



Second Chances Wildlife Rehab Summer Educamp

Sponsoring Organization: Second Chances Wildlife Education Center

Contact Person: Brigitte Brouillard

Grades: 2–6 (ages 8–12)

Content Standards: Environmental Education, Practical Living (PE, health, consumerism, career studies), Science

Who: Children who are interested in animals and the outdoors

What: Learn about Kentucky wildlife, why it's important, and how we care for native wildlife in their environment and at the center. Campers "adopt" one rescue animal during camp. We offer hands-on learning activities, animal contact time with educational animals, outdoor activities, and snacks. T-shirt included. Lunch provided Friday only.

When: July 15–19, 9 a.m.–3 p.m., Monday–Friday

Where: Second Chances Wildlife Education Center, 487 Gentry Lane, Mt. Washington, Kentucky 40047

Transportation: No

Cost: 1-week, 9 a.m.–3 p.m., \$275

Registration: A downloadable registration form is online at www.secondchanceswildlife.org/education-programs/. You can email it to brigitte@secondchanceswildlife.org or mail it to Second Chances Wildlife Education Center, 487 Gentry Lane, Mt. Washington, KY 40047.

Wild Things

Sponsoring Organization: Louisville Nature Center

Contact Person: Tank Percentie

Grades: PreK–10

Content Standards: Environmental Education, Science

Who: Children ages 4 to 12; leaders in training ages 13+ (Call for details.)

What: Look! It's a bird, it's a plane ... no! It's some of Kentucky's great wild things. Let's learn about some of the wild animals and plants that are native to Kentucky. We'll hike and learn to identify animal tracks, bugs, plants, and birds.

When: June 24–28, 9 a.m.–4 p.m. (before and aftercare available)

Where: Louisville Nature Center, 3745 Illinois Avenue, Louisville, KY 40213

Transportation: No

Cost: \$200 member; \$220 nonmembers

Registration: Visit us online at www.louisvillnaturecenter.org/summercamps.

Call us: (502) 458-1328

Email us: educationcoordinator@louisvillnaturecenter.org

History

Frazier History Museum Summer Camps

Sponsoring Organization: Frazier History Museum

Contact Person: Mick Sullivan, msullivan@fraziermuseum.org, (502) 753-5660

Grades: 1–7 (Varies by camp; see individual descriptions.)

Content Standards: Arts (dance, media arts, music, theatre, visual arts), English/Language Arts, Practical Living (PE, health, consumerism, career studies), Social Studies

Who: We welcome young minds who like to take their learning with a big helping of fun. We love students and parents with a basic or deep interest in history, drama, arts, and great stories in general.

What: We've got a schedule full of fun, learning, creativity, and camaraderie at The Frazier in 2019. Our energetic and engaging summer camps are designed for rising first through seventh graders and cover stories from Women's History to Super Spies and Weird Kentuckiana.

When: Various themes, weekly, June 3–August 9, 9 a.m.–4 p.m.; aftercare available; check website for details.

Where: 829 W. Main St, Louisville, KY 40202

Transportation: No

Cost: Weeklong—\$210 nonmember; \$185 member; day camps—\$42 nonmember; \$37 member

Registration: www.fraziermuseum.org/camps or (502) 753-5660

Science

Club SciKidz Camps

Sponsoring Organization: Club SciKidz Science and Technology Summer Day Camps

Contact Person: Brooke Whitaker

Grades: PreK–8

Content Standards: Arts (dance, media arts, music, theatre, visual arts), Environmental Education, Practical Living (PE, health, consumerism, career studies), Science, Technology

Who: Children ages 4–14

What: Weeklong day camps specialize in exciting hands-on learning with a large variety of themes, such as robot engineer, paleontology, veterinarian, game design, and more! Our camp projects are able to be used for your child's JCPS Digital Backpack too!

When: June 10–August 2 (except July 1–5) 9 a.m. to 4 p.m. (drop-off at 8 a.m. and pick-up at 5:30 p.m. available)

Where: 3 camp locations

- Our Savior Lutheran School—8307 Nottingham Pkwy., Louisville, KY 40222
- St. Matthews Episcopal Church—330 N. Hubbards Lane, Louisville, KY 40207
- St. Aloysius Catholic School—122 Mount Mercy Drive, PeeWee Valley, KY 40056

Transportation: No

Cost: \$265/week

Registration: www.clubscikidzkentucky.com

Gheens Science Hall and Rauch Planetarium Summer Camps

Sponsoring Organization: Gheens Science Hall (GSH) and Rauch Planetarium (RP)

Contact Person: Kim Whitehead

Grades:

- Space Adventure Camp (entering grades 2–4):
June 24–28 and July 15–19, 9 a.m.–4 p.m.
- Space Exploration Camp (entering grades 5–6):
June 10–14 and July 29–August 2, 9 a.m.–4 p.m.
- Space Engineering Camp (entering grades 7–9):
June 17–21, 9 a.m.–4 p.m.

Content Standards: Science

Who: Elementary, middle, and entering high school

What: The GSH and RP summer camps are weeklong, full-day experiences that plunge campers into stimulating, engaging, educational projects that incorporate scientific inquiry to spark a lifelong love of science as well as build problem-solving and collaboration skills that translate to life-long success in all areas of life.

When:

- Space Adventure Camp (entering grades 2–4):
June 24–28 and July 15–19, 9 a.m.–4 p.m.
- Space Exploration Camp (entering grades 5–6):
June 10–14 and July 29–August 2, 9 a.m.–4 p.m.
- Space Engineering Camp (entering grades 7–9):
June 17–21, 9 a.m.–4 p.m.

Where: Gheens Science Hall and Rauch Planetarium, University of Louisville Belknap Campus, Louisville, KY 40292

Transportation: No

Cost: \$150 for planetarium family members;
\$200 for nonmembers

Registration: www.planetarium.louisville.edu or
(502) 852-6665

Kentucky Science Center School's out camp

Sponsoring Organization: Kentucky Science Center

Contact Person: Michele Mazzei,
michele.mazzei@louisvilleky.gov

Grades: PreK–8

Content Standards: Environmental Education, Mathematics, Practical Living (PE, health, consumerism, career studies), Science, Technology

Who: Everyone is welcome at Kentucky Science Center.

What: Develop the skills that will last a lifetime! Our camp encourages all campers to play, tinker, and investigate the world around them with plenty of time to explore their favorite science center. Topics change weekly for all grades.

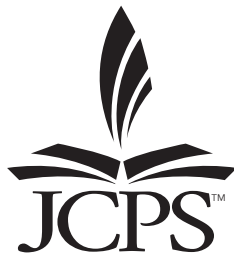
When: weekly **June 3–August 9**, 8 a.m.–5 p.m.

Where: Kentucky Science Center, 727 W. Main Street, Louisville, KY 40202

Transportation: No

Cost: \$220/week—members, 245/week—nonmembers

Registration: kysci.org/camp or (502) 561-6100



www.jefferson.kyschools.us

Equal Opportunity/Affirmative Action Employer Offering Equal Educational Opportunities

Designed, Edited, and Printed by JCPS Materials Production
61010 Curriculum Summer Camps Book 4.19j