

Caterpillar® Product Line



Table of Contents

Wheel Loaders	3
Backhoe Loaders	3
Industrial Loaders	3
Integrated Toolcarriers	3
Multi Terrain Loaders	3
Skid Steer Loaders	3
Compact Track Loaders	3
Excavators – Hydraulic Excavator, Mass, Front Shovel, Demolition, Wheel.....	4, 5
Telehandlers	5
Material Handlers – Track, Wheel.....	5
Track-Type Tractors	6
Track Loaders	6
Pipelayers	6
Compactors – Landfill, Soil	7
Wheel Dozers	7
Towed Scrapers	7
Motor Graders	7
Scrapers – Wheel Tractor	7
Articulated Trucks	8
Off Highway Trucks	8
Underground Mining Equipment	
Articulated Trucks	8
Load/Haul/Dump	8
Forest Products	9
Feller Bunchers	9
Forest Machines	9
Skidders – Track, Wheel	9
Wheel Loaders	9
Forwarders	10
Knuckleboom Loaders	10
Harvesters – Track, Wheel.....	10
Paving Equipment	11
Asphalt Paving Equipment	11
Cold Planers	12
Compactors – Vibratory Soil, Asphalt, Pneumatic	11, 12
Rotary Mixers	12
Electric Power	13
Generator Set Packages	13
Rental Products	13
Electrical Systems	13
Industrial Engines	14
Oil and Gas Products	14
Petroleum Transmissions	14
Marine Engines	15
On-Highway Engines	15
CX On-Highway Transmissions	15

Backhoe Loaders



Model	Net Power		Operating Weight		Dig Depth	
	hp	kW	lb	kg	ft-in	mm
416E	88	65	14,960	6792	14'4"	4360
420E/420E IT	93	69	15,201	6895	14'4"	4360
430E/430E IT	102	76	16,066	7294	15'5"	4698
450E	124	92	24,141	10 950	17'3"	5260

Industrial Loaders



Model	Net Power		Operating Weight		Lift Capacity	
	hp	kW	lb	kg	lb	kg
414E IL	89	66	15,035	6820	5,453	2473

Skid Steer Loaders



Model	Net Power		Rated Operating Capacity		Operating Weight	
	hp	kW	lb	kg	lb	kg
216B Series 2	47	35	1,400	635	5,609	2581
226B Series 2	56	42	1,500	680	5,822	2641
232B Series 2	56	42	1,900	861	6,737	3056
236B Series 2	71	53	1,950	884	7,007	3178
242B Series 2	56	42	2,100	952	6,914	3136
246C	73	54	2,150	975	7,480	3393
252B Series 2	71	53	2,500	1134	7,861	3565
256C	82	61	2,350	1066	7,665	3477
262C	82	61	2,700	1225	7,968	3614
272C	90	67	3,250	1474	8,362	3793

Multi Terrain Loaders



Model	Net Power		Operating Weight		Operating Capacity*		Ground Pressure	
	hp	kW	lb	kg	lb	kg	psi	kPa
247B Series 2	56	42	6,997	3174	2,050	929	4.0	27.3
257B Series 2	56	42	7,952	3607	2,500	1134	4.5	31
277C	82	61	9,495	4307	3,200	1451	3.7	25.5
287C	82	61	9,958	4517	3,800	1724	3.9	26.9
297C	90	67	10,139	4599	4,200	1905	4.0	27.7

* At 50% tipping load

Compact Track Loaders



Model	Net Power		Operating Weight		Operating Capacity*		Ground Pressure	
	hp	kW	lb	kg	lb	kg	psi	kPa
279C	82	61	9,892	4487	3,200	1451	4.0	27.2
289C	82	61	10,365	4702	3,850	1746	4.1	28.5
299C	90	67	10,730	4867	4,150	1882	4.3	29.6

* At 50% tipping load

Integrated Toolcarriers



Model	Net Power		Operating Weight		Bucket Range	
	hp	kW	lb	kg	yd ³	m ³
IT14G	96	72	18,629	8450	1.57-1.83	1.2-1.4
IT38H	180	134	35,273	16 004	3.0-4.0	2.3-3.0
IT62H	211	158	42,770	19 397	4.25-5.5	3.25-4.25

Wheel Loaders



Model	Net Power		Operating Weight		Bucket Capacity	
	hp	kW	lb	kg	yd ³	m ³
924H	128	96	25,644	11 632	2.2-3.6	1.7-2.8
924Hz	128	96	24,180	10 968	2.2-2.7	1.7-2.1
928Hz	149	111	27,699	12 564	2.6-3.0	2.0-2.3
930H	149	111	28,725	13 029	2.6-6.5	2.1-5.0
938H	180	134	33,190	15 059	3.0-4.0	2.3-3.0
950H	197	147	40,435	18 338	3.25-4.5	2.5-3.5
962H	211	158	42,700	19 365	3.5-5.0	2.7-3.8
966H	262	195	52,254	23 698	4.5-5.5	3.4-4.2
972H	287	214	55,451	25 148	5.0-6.0	3.8-4.6
980H	349	260	67,294	30 519	5.0-8.0	3.8-6.1
988H	501	373	109,230	49 546	8.2-9.2	6.3-7.0
990H	627	468	168,617	76 484	11.0-12.0	8.4-9.2
992K	801	597	214,948	97 295	14.0-16.0	10.7-12.3
993K	938	700	294,800	133 637	16.0-19.0	12.2-14.5
994F	1,463	1092	423,064	191 899	18.5-41.0	14.0-31.0

Compact



Model	Net Power		Operating Weight		Bucket Capacity	
	hp	kW	lb	kg	yd ³	m ³
904H	52	39	9,900	4490	0.78	0.6
906H	70	52	12,412	5630	1.18	0.9
908H	80	59	14,252	6465	1.40	1.1
914G	96	72	17,527	7950	1.57-1.83	1.2-1.4

Excavators



Model	Net Power		Operating Weight		Max Reach/Depth	
	hp	kW	lb	kg	ft-in	m
311D LRR	80	60	28,020	12 710	26'7"/18'4"	8.1/5.6
312D	90	67	29,000	13 150	28'3"/19'10"	8.6/6.0
312D L	90	67	29,650	13 450	28'3"/19'10"	8.6/6.0
314D CR	90	67	31,305	14 200	28'4"/19'6"	8.6/5.9
314D LCR	90	67	31,750	14 400	28'4"/19'6"	8.6/5.9
315D L	115	86	38,100	17 280	30'3"/21'7"	9.2/6.6
320D	148	110	44,820	20 330	35'2"/25'1"	10.7/7.6
320D L	148	110	47,554	21 570	35'2"/25'1"	10.7/7.6
320D LRR	148	110	52,249	23 700	35'2"/25'1"	10.7/7.6
321D LCR	148	110	53,308	24 180	32'1"/22'0"	9.79/6.71
324D L	188	140	54,660	24 790	34'7"/24'1"	10.55/7.33
329D L	204	152	64,460	29 240	36'7"/25'8"	11.15/7.83
328D LCR	204	152	76,500	34 700	34'8"/22'8"	10.56/6.92
336D L	268	200	79,700	36 151	38'5"/26'10"	11.71/8.19
345D L	380	283	100,040	45 375	42'4"/28'9"	12.91/8.77
365C L	404	302	145,430	65 960	46'1"/31'0"	14.04/9.64
385C L	513	382	187,360	84 980	56'5"/38'7"	17.2/11.75

Mini



Model	Net Power		Operating Weight		Max Reach/Depth	
	hp	kW	lb	kg	ft-in	m
301.6C	18.1	13.5	3,792	1720	12'9"/7'7"	3.9/2.3
301.8C	18.1	13.5	3,935	1785	12'9"/7'7"	3.9/2.3
302.5C	24.9	18.6	6,283	2850	16'2"/9'7"	4.9/2.9
303C CR	29.5	22	7,837	3555	17'11"/10'6"	5.5/3.2
303.5C CR	38.9	29	8,620	3910	18'5"/11'4"	5.6/3.5
304C CR	41.6	31	10,847	4920	19'8"/12'1"	6.0/3.7
305C CR	46.9	35	11,729	5320	20'4"/12'9"	6.2/3.9
307D	55.6	41.5	15,598	7075	22'3"/15'1"	6.8/4.6
308D CR	55.6	41.5	17,305	7850	22'5"/15'2"	7.4/4.7
308D CR SB	55.6	41.5	18,519	8400	25'0"/15'6"	7.6/4.7

Waste Handling Arrangements

Model	Power		Operating Weight		Grapple Size	
	hp	kW	lb	kg	yd³	m³
320D WH	148	110	46,000	20 865	4.6	3.5
330D WH	268	200	81,200	36 832	7.6	5.8

Mass Excavators



Model	Power		Operating Weight		Bucket Capacity Range	
	hp	kW	lb	kg	yd³	m³
365C L ME	404	302	156,360	70 920	6.0	4.6
385C L ME	513	382	194,200	88 090	7.25	5.4

Front Shovels



Model	Power		Operating Weight		Bucket Capacity Range	
	hp	kW	lb	kg	yd³	m³
385C FS	530	390	199,739	90 600	6.0-8.5	4.6-6.5

Demolition Excavators



Model	Net Power		Operating Weight		Max Reach/Height	
	hp	kW	lb	kg	ft-in	m
330D UHD¹	270	200	105,601	47 900	45'4"/69'11"	13.8/21.3
345C UHD²	345	257	140,655	63 800	53'10"/85'7"	16.4/26.1
345C UHD³	345	257	141,537	64 200	59'8"/91'6"	18.2/27.9
365C UHD⁴	411	302	188,936	85 700	70'11"/108'7"	21.6/33.1
385C UHD⁵	530	390	217,596	98 700	82'8"/129'7"	25.2/39.5

¹ 68'11" (21 m) boom

² 85'4" (26 m) boom

³ 91'10" (28 m) boom

⁴ 108'3" (33 m) boom

⁵ 131'2" (40 m) boom

Wheel Excavators



Model	Net Power		Max Operating Weight		Max Reach*/Depth*	
	hp	kW	lb	kg	ft-in	m
M313D	128	95	35,715	16 200	30'3"/18'11"	9.21/5.57
M315D	136	101	40,345	18 300	31'5"/20'0"	9.56/6.09
M316D	158	118	43,651	19 800	31'5"/20'0"	9.56/6.09
M318D**	166	124	44,313	20 100	32'1"/20'11"	9.76/6.36
M322D**	165	123	49,604	22 500	34'1"/21'11"	10.39/6.68

* Maximum digging depth with longest boom/stick options.

** Material Handler versions of the M318D and M322D are available.

Telehandlers



Model	Power		Operating Weight		Rated Capacity		Lift Height	
	hp	kW	lb	kg	lb	kg	ft-in	m
TL642	99	74.5	20,240	9180	6,500	2948	42'0"	12.8
TL943	99	74.5	26,050	11 814	9,000	4082	43'0"	13.1
TL1055	125	93.2	34,700	15 740	10,000	4536	55'0"	16.8
TL1255	142	106	35,400	16 057	12,000	5443	55'0"	16.8
TH255	84	63	10,800	4899	5,500	2500	18'4"	5.6
TH406	100/ 125	74.5/ 93.1	15,870	7200	8,100	3700	20'0"	6.1
TH407	100/ 125	74.5/ 93.1	16,980	7700	8,100	3700	24'0"	7.3

Track Material Handlers



Model	Net Power		Operating Weight		Max Reach/Height	
	hp	kW	lb	kg	ft-in	m
325D MH	204	152	78,300	35 510	46'4"/49'11"	14.1/15.2
325D MH	204	152	78,300	35 510	50'10"/53'10"	15.5/16.4
330D MH	268	200	98,400	44 625	47'11"/51'11"	14.6/15.8
330D MH	268	200	98,400	44 625	52'6"/55'5"	16.0/16.9
345C MH	345	257	126,600	57 430	54'2"/55'6"	16.5/16.9
345C MH	345	257	126,600	57 430	59'1"/59'1"	18.0/18.0
385C MH	513	382	203,000	92 060	53'3"/56'6"	16.2/17.2
385C MH	513	382	203,000	92 060	74'0"/71'6"	22.6/21.8

Wheel Material Handlers



Model	Net Power		Operating Weight		Max Reach/Height	
	hp	kW	lb	kg	ft-in	m
M313D Ind*	128	95	34,835	15 800	26'0"/28'0"	7.9/8.5
M315D Ind*	136	101	39,465	17 900	27'6"/29'6"	8.3/8.9
M316D Ind*	158	118	42,770	19 400	27'6"/29'6"	8.3/8.9
M318D Ind*	166	124	44,313	20 100	28'0"/28'3"	8.5/8.6
M318D MH	166	124	51,643	23 425	36'1"/39'6"	11/12.04
M322D MH	165	123	56,604	25 675	41'0"/43'8"	12.48/13.3
M325D MH	190	142	67,900	30 790	47'0"/52'5"	14.3/16.0
M325D MH	190	142	67,900	30 790	51'4"/56'3"	15.7/17.1
M325D L MH	204	152	82,000	37 190	47'0"/54'6"	14.3/16.6
M325D L MH	204	152	82,000	37 190	51'4"/58'5"	15.7/17.8

* Industrial Stick.

Track-Type Tractors



Model	Power		Operating Weight		Blade
	hp	kW	lb	kg	
D3K XL*	74	55.2	17,185	7795	VPAT
D3K LGP*	74	55.2	17,842	8093	VPAT
D4K XL*	84	62.6	17,961	8147	VPAT
D4K LGP*	84	62.6	18,742	8501	VPAT
D5K XL*	96	71.6	20,741	9408	VPAT
D5K LGP*	96	71.6	21,347	9683	VPAT
D6K XL	125	93.2	28,409	12 886	VPAT
D6K LGP	125	93.2	29,690	13 467	VPAT
D6N XL†	150	111.8	36,497	16 555	VPAT, SU
D6N LGP†	150	111.8	39,112	17 741	VPAT
D6T STD	185	138	41,298	18 737	SU, A
D6T (XL, XW or LGP)	200	149	50,968	23 119	S, SU, A, VPAT
D7R Series 2 (STD, LGP or XR)	240	179	60,503	27,443	S, SU, U, A
D8T*	310	231	84,850	38 488	SU, U, A
D9T*	410	306	105,600	47 900	SU, U
D10T*	580	433	146,500	66 451	SU, U
D11T*	850	634	230,100	104 590	SU, U
D11T Carrydozer*	850	634	248,600	113 000	CD

* Available with MS ripper, SS ripper, counterweight.

† Available with MS ripper.

Winch available for D3K to D10T.

Waste Handler

Model	Power		Operating Weight		Blade
	hp	kW	lb	kg	
D6N WH XL	150	111.8	38,224	17,338	SU, VPAT
D6N WH LGP	150	111.8	42,454	19,257	VPAT
D6T WH	200	149	56,620	25 736	S, SU
D7R Series 2 WH	240	179	61,500	27 920	S, SU, U
D8T WH	310	231	85,150	38 660	SU, U
D9T WH	410	306	109,180	49 567	SU, U
D10T WH	580	433	144,986	65 764	U

Track Loaders



Model	Power		Operating Weight*		Bucket Capacity	
	hp	kW	lb	kg	yd ³	m ³
939C	90	67	20,908	9484	1.5	1.2
953D	148	110	34,209	15 517	2.42	1.85
963D	189	141	44,577	20 220	3.2	2.45
973D	306	228	58,980	26 753	4.19	3.2

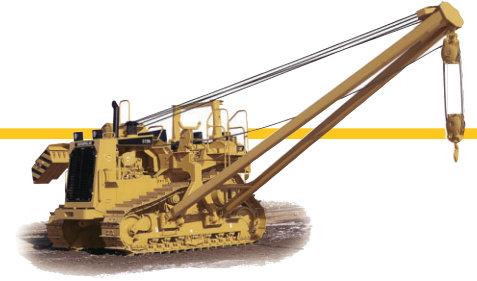
* Includes GP bucket plus long bolt-on teeth and segments.

Waste Handler

Model	Power		Operating Weight*		Bucket Capacity	
	hp	kW	lb	kg	yd ³	m ³
953D WH	148	110	35,494	16 100	3.0	2.3
963D WH	189	141	46,297	21 000	4.05	3.1
973D WH	306	228	62,280	28 250	6.4	4.9

* Includes GP Landfill bucket with bottom cutting edge.

Pipelayers



Model	Power		Operating Weight		Lifting Capacity	
	hp	kW	lb	kg	lb	kg
PL61	125	93	37,480	17 000	40,000	18 145
572R Series 2	240	179	72,206	31 845	90,000	40 800
583T	310	231	100,000	45 359	140,000	63 504
587T	366	273	117,000	53 070	202,000	91 625

Landfill Compactors



Model	Gross Power		Operating Weight		Blade Width Over End Bits	
	hp	kW	lb	kg	ft-in	mm
816F2	253	189	52,364	23 744	12'0"	3657
826H	401	299	81,498	36 967	14'9"	4502
836H	554	413	118,348	53 682	17'0"	5193

Soil Compactors



Model	Net Power		Operating Weight		Blade Width Over End Bits	
	hp	kW	lb	kg	ft-in	mm
815F2	232	173	47,877	21 713	12'4"	3761
825H	354	264	72,164	32 734	15'1"	4628

Wheel Dozers



Model	Net Power		Operating Weight		Blade Width	
	hp	kW	lb	kg	ft-in	mm
814F2	232	173	47,877	21 713	11'8"	3556
824H	354	264	63,325	28 724	14'8"	4507
834H	498	372	103,849	47 106	16'8"	5074
844H	627	468	156,120	70 815	17'4"	5278
854K	800	597	216,273	98 100	21'8"	6321

Towed Scrapers



Model	Heaped Capacity		Rated Load		Width of Cut	
	yd ³	m ³	lb	kg	in	mm
TS180	18.0	13.8	44,000	19 958	126	3200
TS185	18.3	15.0	45,000	20 411	143	3632
TS220	22.0	16.8	66,000	29 937	137	3480
TS225	22.0	16.8	66,000	29 937	143	3632

Motor Graders



Model	Net Power		Operating Weight		Standard Blade Length			
	Standard hp	Optional kW	lb	kg	ft	mm		
120M	138-153	103-114	138-182	103-136	31,069	14 093	12	3.7
120M AWD	148-193	166-206			32,569	14 773	12	3.7
12M	158-173	118-129	158-193	118-144	32,016	14 522	12	3.7
140M	183-198	136-148	183-218	136-163	33,356	15 130	12	3.7
140M AWD	193-233	144-174			34,586	15 810	12	3.7
160M	213-228	159-170	213-248	159-185	35,060	15 903	14	4.3
160M AWD	223-268	166-200			36,560	16 583	14	4.3
14M	259-274	193-204	259-294	193-219	47,133	21 379	14	4.3
16M	297-312	221-233	297-332	221-248	57,452	26 060	16	4.9
24M*	533	397			137,694	62 457	24	7.3

* Ripper is standard on the 24M and included in the operating weight.

Wheel Tractor-Scrapers



Model	Power		Capacity struck/heaped		Top Speed Loaded	
	hp	kW	yd ³	m ³	mph	km/h
613G	181	135	9/11	7/8	24	39
621G	330/365	246/272	16/22	12/17	32	51
623G	330/365	246/272	18/23	14/18	32	51
627G	(T) 330/365 (S) 239/266	246/272 178/198	16/22	12/17	32	51
627G Auger	(T) 330/365 (S) 239/266	246/272 178/198	21*	16*	32	51
631G	462/500	345/373	24/34	18/26	33	53
637G	(T) 462/500 (S) 266/283	345/373 198/211	24/34	18/26	33	53
637G Auger	(T) 462/500 (S) 266/283	345/373 198/211	31*	24*	33	53
637G (Coal Bowl)	(T) 462/500 (S) 266/283	345/373 198/211	41/50	31/38	34	55
657G	(T) 564/600 (S) 410/451	421/447 306/337	32/44	25/34	33	53
657G (Coal Bowl)	(T) 564/600 (S) 410/451	421/447 306/337	59/73	45/56	31	50

* Heaped capacity only.

Articulated Trucks



Model	Net Power		Operating Weight – Empty		Body Capacity	
	hp	kW	lb	kg	tons	m ³ /ton
725	301	225	49,075	22 260	26	23.6
730	317	237	50,375	22 850	31	28.1
730 Ejector	317	237	56,330	25 550	31	28.1
735	419	313	69,206	31 391	36	32.7
740	453	338	72,973	33 100	43.5	39.5
740 Ejector	453	338	78,505	35 610	42	38

Off Highway Trucks



Model	Net Power		Capacity		Top Speed	
	hp	kW	ton	m ³ /ton	mph	km/h
770	476	355	40	36.3	46.5	74.8
772	535	399	50	45.0	49.5	79.7
773F	703	524	60	54.4	41.9	67.5
775F	740	552	70	63.5	41.9	67.5
777F	938	700	100	90.9	40.1	64.5
785C	1,348	1005	150	136.0	34.0	54.8
785D	1,348	1005	150	136.0	34.0	54.8
789C	1,771	1320	195	177.0	32.7	52.6
793D	2,337	1743	240	218.0	33.7	54.3
797B	3,370	2513	380	345.0	42.0	67.6

Underground Mining Equipment



Articulated Trucks

Model	Net Power		Loaded Operating Weight		Body Range	
	hp	kW	lb	kg	yd ³	m ³
AD30 Dump Truck	377	281	132,300	60 000	14.8-22.9	11.3-17.5
AD45B Dump Truck	556	414	187,393	85 000	27.9-32.8	21.3-25.1
AD55B Dump Truck	725/751	540/560	231,485	105 000	35.2-47.9	26.9-36.6

Load/Haul/Dump

Model	Net Power		Loaded Operating Weight		Bucket Range	
	hp	kW	lb	kg	yd ³	m ³
R1300G	141	105	61,178	27 750	3.1-4.4	2.4-3.4
R1600G	221/241	165/180	88,185	40 000	5.5-7.72	4.2-5.9
R1700G	293/353	218/241	115,745	52 500	6.0-11.5	4.6-8.8
R2900G	389/405	290/302	148,611	67 409	9.4-11.6	7.2-8.9
R2900G Xtra	389/405	290/302	166,614	75 575	11.6-15.2	8.9-11.6



Forest Machines



Model	Power		Operating* Weight		Max Reach	
	hp	kW	lb	kg	ft	m
320D FM	157	117	66,812	30 300	36	11.0
324D FM	188	140	75,698	34 330	38-40	11.6
325D FM	204	152	83,350	37 807	40-42	12.2
330D FM	268	200	100,991	45 801	43-45	13.1

* Weight without tool and with Under/Under log loader front.

Skidders



Track Skidders

Model	Net Power		Operating Weight		Track Length		Grapple Capacity Range	
	hp	kW	lb	kg	in	mm	ft²	m²
517 Grapple	120	89.5	40,450	18 364	114	2910	8.0	0.74
517 Cable	120	89.5	38,200	17 330	114	2910		
527 Grapple	150	112	47,140	21 380	121	3061	9.0-10.0	0.84-0.93
527 Cable	150	112	38,000	17 235	121	3061		



Wheel Skidders

Model	Net Power*		Operating Weight		Wheelbase		Grapple Capacity Range	
	hp	kW	lb	kg	in	mm	ft²	m²
525C	182	136	39,045	17 711	139.2	3534	12.5-14.4	1.16-1.34
535C	204	152	39,780	18 044	139.2	3534	14.4-16.6	1.34-1.54
545C	219	163	42,325	19 198	155.1	3939	16.6-19.0	1.54-1.78

* @ 1,800 rpm

Wheel Loaders



Forest Machine Arrangements

Model	Power		Weight*		Full Turn Static Grapple Fork (Racked)		Tipping Load Millyard Fork (Racked)	
	hp	kW	lb	kg	lb	kg	lb	kg
IT38H	180	134	35,273	16 004	17,035	7727	16,290	7389
950H	197	147	38,722	17 650	22,591	10 247	22,280	10 106
IT62H	211	158	42,770	19 397	23,021	10 442	23,007	10 436
966H	262	195	53,801	24 399	34,654	15 719	33,755	15 311
980H	349	260	73,004	33 108	40,666	18 446	41,859	18 987

* Base forestry machine weight without forks.

Feller Bunchers



Track – Zero Tail Swing

Model	Rated Power*		Tractive Effort		Max Reach (with Head)		Operating Weight (w/o Head)	
	hp	kW	lb	kg	ft	m	lb	kg
511	247	184.2	67,000	30 391	26.6	8.1	53,710	24 362
521	284	211.8	70,500	31 978	26.6	8.1	59,710	27 084
522	284	211.8	75,500	34 246	26.6	8.1	67,040	30 410
532	284	211.8	85,000	38 555	26.6	8.1	69,710	31 620

* @ 1,800 rpm



Track – Full Tail Swing

Model	Rated Power*		Tractive Effort		Max Reach (with Head)		Operating Weight (w/o Head)	
	hp	kW	lb	kg	ft	m	lb	kg
541	305	227.4	75,500	34 246	28.1	8.6	66,560	30 191
551	305	227.4	104,000	47 174	28.1	8.6	68,468	31 057
552	305	227.4	104,000	47 174	28.1	8.6	78,660	35 680

* @ 1,800 rpm



Wheel Feller Bunchers

Model	Gross Power*		Wheelbase		Travel Speed**		Operating Weight (w/o Attachment)	
	hp	kW	in	cm	Low Range mph	High Range mph	lb	kg
553	173	129	101.5	258	0-5	0-15	25,300	11 476
563	197	147	113	287	0-5	0-15	27,275	12 372
573	225	168	113	287	0-5	0-15	27,775	12 599

* @ 1,800 rpm

** Low Range: 8 km/5 mi
High Range: 23.5 km/14.6 mi

Forwarders



Model	Gross Power		Load Capacity		Loader Reach		Operating Weight	
	hp	kW	lb	kg	ft	m	lb	kg
534 (4-wheel)	125	93	16,000	7258	22.9	6.9	27,000	12 247
544 (6-wheel)	125	93	24,000	10 866	22.9	6.9	31,000	14 062
564 (6-wheel)	174	130	30,000	13 608	22.9	6.9	36,000	16 330
574 (8-wheel)	174	130	32,000	14 525	22.9	6.9	38,000	17 237

Harvesters



Track Harvesters

Model	Gross Power		Tractive Effort		Max Reach (with Head)		Operating Weight (w/o Head)	
	hp	kW	lb	kg	ft	m	lb	kg
501	157	117	36,600	16 621	23.25	7.1	35,000	15 900
501 HD	157	117	43,400	19 686	27	8.2	40,000	18 000



Wheel Harvester

Model	Gross Power*		Tractive Effort		Max Reach (with Head)		Operating Weight (w/o Head)	
	hp	kW	lb	kg	ft	m	lb	kg
550	197	147	36,000	16 329	33.1	10.1	47,040	21 319

* @ 1,800 rpm

Knuckleboom Loaders



Stationary Mount

Model	Gross Power		Max Reach		Operating Weight		Max Lift Capacity*	
	hp	kW	ft	m	lb	kg	lb	kg
519 SM	75	55.9	30	9.6	15,915	7219	28,270	12 823
519 SM/EHC	75	55.9	30	9.6	15,315	6947	28,270	12 823
569 SM	100	74.5	36	10.9	18,945	8593	31,240	14 216
569 SM/EHC	100	74.5	36	10.9	18,345	8321	31,240	14 216

* Maximum Lift Capacity = lb (kg) @ 10' R-5' (3 m R-1.5 m) Elevation.
Note: Optional booms available.

Trailer or Truck Mounted

Model	Gross Power		Max Reach		Operating Weight		Max Lift Capacity	
	hp	kW	ft	m	lb	kg	lb	kg
519	156	116.3	27.0	8.2	19,099	8663	14,375 *	6520
529	156	116.3	29.0	8.8	27,900	12 655	19,520 **	8850
559	156	116.3	32.0	9.7	32,200	14 605	22,300 **	10 115
569	173	129	32.6	9.9	34,000	15 422	26,600 **	12 065
579	173	129	32.6	9.9	34,000	15 422	30,980 **	14 052

* Maximum Lift Capacity = lb (kg) @ 20' R-0' (6 m R-0 m) Elevation.
** Maximum Lift Capacity = lb (kg) @ 15' R-5' (4.6 m R-1.5 m) Elevation.
Note: Optional booms available.

Vibratory Soil Compactors



Model	Gross Power		Operating Weight*		Drum Width	
	hp	kW	lb	kg	in	mm
CS323C	83	62	9,680	4390	50	1270
CP323C	83	62	10,190	4620	50	1270
CS423E	83	62	14,875	6745	66	1676
CS433E	100	75	14,875	6745	66	1676
CP433E	100	75	15,750	7145	66	1676
CS54	130	97	23,120	10 485	84	2134
CS56	156	116	25,164	11 414	84	2134
CP56	156	116	25,047	11 316	84	2134
CS64	156	116	31,389	14 238	84	2134
CP64	156	116	31,550	14 311	84	2134
CS74	156	116	34,072	15 455	84	2134
CP74	156	116	33,804	15 333	84	2134
CS76	174	130	36,945	16 758	84	2134
CP76	174	130	37,249	16 896	84	2134
CS76 XT	174	130	41,542	18 843	84	2134

* Weights with open platform and ROPS/FOPS canopy.

Asphalt Paving Equipment



Model	Gross Power		Operating Tractor Weight		Standard Paving Width	
	hp	kW	lb	kg	ft-in	mm
AP600D	174	129	31,299	14 197	8'0"	2400
AP655D						
(Mobil-trac™)	174	129	33,775	15 320	8'0"	2400
(Steel Track)	174	129	33,775	15 320	8'0"	2400
AP800D	130	97	29,310	13 307	8'0"	2400
AP1000D	224	167	32,470	14 728	10'0"	3000
AP1055D						
(Mobil-trac™)	224	167	37,580	17 601	10'0"	3000
(Steel Track)	224	167	36,600	16 601	10'0"	3000
BG-225C	130	97	30,655	13 917	8'0"	2400
BG-230D	130	97	29,310	13 307	8'0"	2400
BG-260D	224	167	32,470	14 728	10'0"	3000
BG-2455D						
(Mobil-trac™)	224	167	37,580	17 601	10'0"	3000
(Steel Track)	224	167	36,600	16 601	10'0"	3000

Screeds

Model	Standard Paving Width		Max Paving Width		Min Paving Width	
	ft-in	mm	ft-in	mm	ft-in	mm
Extend-A-Mat™ 8-16B						
(Electric or Diesel)	8'0"	2400	20'2"	6100	6'0"	1800
Extend-A-Mat 10-20B						
(Electric or Diesel)	10'0"	3000	24'2"	7400	8'0"	2400
AS2251						
(Electric or Diesel)	8'2"	2500	20'5"	6200	6'2"	1900
AS2301						
(Electric or Diesel)	10'0"	3000	24'0"	7300	8'0"	2400
AS2302 Vers-A-Mat™	10'0"	3000	22'0"	6700	8'0"	2400
AS3251C Extend-A-Mat	8'0"	2400	20'2"	6100	6'0"	1800
AS2252C Vers-A-Mat™	8'2"	2500	18'5"	5600	6'2"	1900

Asphalt Compactors



Model	Gross Power		Operating Weight		Drum Width	
	hp	kW	lb	kg	in	mm
CB14	21.6	16.1	3,571	1620	31	800
CB14 XW	21.6	16.1	4,057	1840	39	1000
CB14 Full Flush	21.6	16.1	3,528	1600	35/ 31	900/ 800
CB22	33	24.6	5,512	2500	39	1000
CB24	33	24.6	5,952	2700	47	1200
CB32	33	24.6	7,121	3230	51	1300
CC24	33	24.6	5,291	2400	47	1200
CB34	46	34.1	8,688	3940	51	1300
CB34 XW	46	34.1	9,259	4200	55	1400
CC34	46	34.1	8,090	3670	51	1300
CB434D	83	62	16,538	7500	59	1500
CB434D XW	83	62	16,979	7700	67	1700
CB534D*	130	97	22,836	10 380	67	1700
CB534D XW*	130	97	24,860	11 300	79	2000
CB564D**	130	97	27,783	12 600	84	2130

* Available with Versa Vibe™ option.

** Versa Vibe is standard.

Pneumatic Compactors



Model	Gross Power		Operating Weight		Rolling Width	
	hp	kW	lb	kg	in	mm
PS150C*	100	75	28,535	12 940	69	1743
PS300C	100	75	46,200	21 000	75	1900
PF300C	100	75	46,200	21 000	75	1900
PS360C	130	98	55,115	25 000	90	2275

* Heavy weight option available: 38,000 lb (17 273 kg)

Cold Planers



Model	Gross Power		Operating Weight		Cutting Width Standard		Max Working Depth	
	hp	kW	lb	kg	in	mm	in	mm
PM102*	225	168	38,810	17 600	40	1000	12	305
PM200	575	429	68,135	30 900	79	2010	12.6	320
PM201**	650	485	86,360	39 165	83	2100	12	305

* The PM102 is also available with a rubber-tire undercarriage.

** Weights with conical rotor.

Rotary Mixers



Model	Gross Power		Operating Weight*		Cutting Width Standard		Max Working Depth	
	hp	kW	lb	kg	in	mm	in	mm
RM300	350	261	53,911	24 454	96	2438	20	508
RM500	540	403	62,060	28 145	96	2438	20	508

* Weight with ROPS, cab and Universal rotor. RM300 and RM500 can be outfitted with optional rotors for various applications and conditions. RM300 and RM500 are capable of both full depth reclamation (Max working depth 16"/406 mm) or soil stabilization depending on rotor configuration.

Electric Power



Generator Set Packages

60 Hz Diesel Ratings

	Generator Set EkW Rating
C1.5	12-13
C2.2	16-27
C4.4	36-100
C6.6 ACERT™	114-175
C9 ACERT	225-300
C15 ACERT	320-550
C18 ACERT	500-600
C27 ACERT	591-800
3406	275-400
3412	591-800
3508	832-910
C32 ACERT	740-1000
3512	890-1500
3516	1450-2500



	Generator Set EkW Rating
C175-16 ACERT	3000-3100
3600 Family	1650-4440
CM20	980-1470
CM25	1730-2500
CM32	5590-7450
CM43	5240-13 970

60 Hz Gas Ratings

	Generator Set EkW Rating
G3300 Family	85-150
G3400 Family	150-515
G3500 Family	360-2055
G3600 Family	1155-3480

Rental Products



	Generator Set EkW Rating
Power Modules	20-2000

Temperature Control Products

Air Conditioners	10-90 Tons
Turbines – Gas	5.2 MW
Air Compressors	185-1600 cfm

Electrical Systems



Uninterruptible Power Supply	150 kVA – 3.6 MW
Switchgear	600 V, 5 kV, 15 kV 1000-6000 Amps Emergency and Utility Paralleling Load Management
Automatic Transfer Switch	600 V, 5 kV, 15 kV Open Transition Closed Transition By-Pass Isolation

Industrial Engines

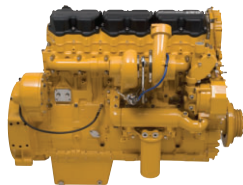


Diesel

	hp	kW
C0.5	11.0-13.7	8.2-10.2
C0.7	16.3-20.5	12.2-15.3
C1.1	18.3-28.2	13.7-21.0
C1.5	27.8-40.2	20.7-30.0
C1.6	33.0-35.5	24.6-26.5
C1.7	33.2-34.8	24.7-26.0
C2.2	41.6-66.0	31.0-49.2
C3.4	63.0-83.0	47.0-62.0
C4.4	72.0-111.3	54.0-83.0
C4.4 ACERT	82.5-142.0	61.5-106.0



	hp	kW
C6.6 ACERT	119.4-274.9	89.0-205.0
C7 ACERT	225-300	168-224
C9 ACERT	275-375	205-280
C11 ACERT	325-450	242-336
C13 ACERT	385-520	287-388
C15 ACERT	440-595	328-444

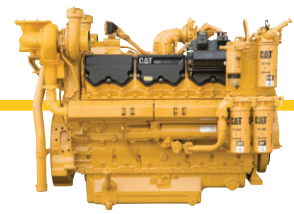


	hp	kW
C18 ACERT	575-800	429-597
C27 ACERT	800-1,150	597-858
C32 ACERT	950-1,350	708-1007
3406C	270-525	201-392
3500 Family	680-2,100	507-1566
3600 Family	1,998-6,598	1490-4920

Gas

	hp	kW
G3300 Family	75-220	56-164
G3400 Family	175-675	131-504
G3500 Family	310-1725	231-1286
G3600 Family	1,600-5,045	1193-3762

Oil and Gas Products



Diesel

	hp	kW
C6.6 ACERT®	119.4-274.9	89-205
C7 ACERT	225-300	168-224
C9 ACERT	275-375	205-280
C11 ACERT	325-450	242-336
C13 ACERT	385-520	287-388
C15 ACERT	440-595	328-444
C18 ACERT	575-800	429-597
C27/C32 ACERT	800-1,500	597-1119
C7 Water Cooled	205-275	153-205
C9 Water Cooled	325-340	242-254
C18 Water Cooled	500	373
C32 Water Cooled	800-1,225	597-913
3126B	230-275	172-205
C-10 Water Cooled	325-365	242-272
C-15 Water Cooled	500	373
3400 Family	247-1,050	183-783
3500 Family	680-2,500	507-1864
3600 Family	1,998-7,268	1490-5420
C280	2,320-7,268	1730-5420
CM32	3,910-10,880	2880-8000
CM43	7,345-21,760	5400-16 000



Gas

	hp	kW
G3300 Family	75-220	56-164
G3400 Family	175-637	131-475
G3500 Family	515-1725	384-1286
G3600 Family	1,600-5,045	1193-3762
GCM34	5,753-8,180	4290-6100

Petroleum Transmissions



Transmission	Power		Input Torque		Weight		Gear Ratios
	hp	kW	lb-ft	N-m	lb	kg	
TH31-E61	350	261	1,148	1556	Straight Through:		4.40, 2.33, 1.53, 1.00, 0.71, 0.60, -3.96
					1,855	841	
					2,755	1250	
					2,827	1282	

(cont'd)

Petroleum Transmissions (cont'd)

Transmission	Power		Input Torque		Weight		Gear Ratios
	hp	kW	lb-ft	N-m	lb	kg	
TH35-E81	550	410	1,650	2237	Straight Through:		5.72, 3.57, 2.71, 1.94, 1.42, 1.00, 0.73, 0.63, -4.46
					2,145	973	
					Dropbox 2WD:		
					2,975	1350	
TH48-E70	1,500	1118	4,422	5995	3,735	1694	6.16, 4.52, 3.33, 2.47, 1.82, 1.36, 1.00
TH48-E80	2,300	1715	6,656	9024	4,468	2028	3.33, 2.45, 2.20, 1.80, 1.61, 1.35, 1.19, 0.99*
TH55-E70	2,500	1864	7,396	10 028	6,430	2920	6.25, 4.59, 3.38, 2.48, 1.83, 1.36, 1.00

* Warm-Up Mode Option: provides torque converter stall for aiding power train warming during cold starts. 8F is unavailable on TH48-E80 units configured with the warm-up mode option.



Marine Engines

	Propulsion Ratings		Generator Set EkW Rating
	bhp	bkW	
C1.5			10.0-14.5
C2.2			16.0-30.0
C4.4			36-99
3056	125-205	93-153	
C7	250-370	187-276	
C7 ACERT	455	339	
C9			142-250
C9 ACERT	503-567	375-423	
C9*	217-361	162-269	
C12	340-600	254-448	
C12 ACERT	660-705	492-526	
C18	454-1,001	339-747	275-550
C18*	404-806	301-601	
C18 ACERT	454-873	339-651	
C18 ACERT*	499-806	372-601	
C32	1,100-1,652	820-1232	
C32 ACERT	660-1,800	492-1342	
C32 ACERT*	791-1,333	590-994	
C280	2,320-7,268	1730-5420	1650-6500
3400 Family			200-590
3500 Family	705-3,386	526-2525	590-1825
M20C Family	1,860-3,120	1020-1710	970-1625
M25 Family	3,285-5,470	1800-3000	1710-2820
M32C Family	5,255-8,205	2880-4500	2765-4320
VM32C Family	10,490-14,580	5760-8000	5530-7680
M43C Family	9,840-16,410	5400-9000	
VM43C Family	19,690-29,170	10 800-16 000	

* Auxiliary/Gen set engine.

On-Highway Engines



	hp	kW
C7 ACERT	210-360	157-269



	hp	kW
C9 ACERT	285-425	213-317



	hp	kW
C13 ACERT	305-525	228-392



	hp	kW
C15 ACERT	435-625	325-466



CX On-Highway Transmissions

Transmission	Power		Input Torque		Weight		Gear Ratios
	hp	kW	lb-ft	N-m	lb	kg	
CX28	425	317	1,350	1830	595	270	3.76, 1.96, 1.35, 1.00, 0.78, 0.65, -3.97
CX31	625	466	1,900	2576	905	410	4.40, 2.33, 1.53, 1.00, 0.72, 0.61, -3.97
CX35	700	522	2,150	2915	1,325	601	5.73, 3.57, 2.72, 1.95, 1.43, 1.00, 0.74, 0.63, -4.46



AECQ1042-09 (09-08)
Replaces AECQ1042-08

© 2008 Caterpillar
All Rights Reserved
Printed in U.S.A.

Materials and specifications are subject to change without notice. Featured machines in photos may include additional equipment. See your Caterpillar® dealer for available options.

For more complete information on Cat® products, dealer services, and industry solutions, visit us on the web at www.cat.com

CAT, CATERPILLAR, SAFETY.CAT.COM their respective logos, "Caterpillar Yellow" and the POWER EDGE trade dress, as well as corporate and product identity used herein, are trademarks of Caterpillar and may not be used without permission.

CATERPILLAR®
TODAY'S WORK. TOMMORROW'S WORLD.™