



AEROSOL CANS

Substances in aerosol cans are under pressure and are usually flammable. Look for alternatives to aerosol cans such as pump sprays. Empty aerosol cans may be disposed of in regular household trash.

ALUMINUM

Aluminum foil and trays are often used in homes for covering and preparing food. Try to use reusable dishes such as ceramic or glass instead.

Aluminum foil, cans, and trays may be recycled at local recycling centers.



AMMUNITION

Check with local law enforcement or with local firearms dealers.



ANIMAL SUPPLIES

Useable pet supplies such as collars, flea control, worm capsules etc. may be accepted by donation at the Williams County Humane Society. Located at 09464 County Road 13, Bryan, OH 43506
Telephone 419 636 2200



ANTIFREEZE

Some service stations in the area accept antifreeze for recycling. Call first to determine if a fee is involved. In the Williams County area contact Monro Muffler at 1385 South Main Street in Bryan. 419 636 7949

APPLIANCES

Repair old appliances when practical. Appliances such as washers, dryers, stoves and water heaters are accepted at Northwest Recycling at 12475 County Road H Bryan, Ohio. They will also accept refrigerators, freezers and air conditioners for a fee. Call first to determine cost. 419 636 5215



ASBESTOS

Some Asbestos containing products such as shingles, floor tiles and siding may be disposed at the Williams County Landfill. Call first to confirm.
419 636 2242

AUTOMOBILE PARTS & JUNK CARS



Check with local auto salvage yards.

Auto Impact Service Inc.
10222 County Road 15
Montpelier, OH 43543
Tel. 419485 8122

Edgerton Auto Salvage
06018 St. Rt. 6
Edgerton, OH 43517
Tel. 419 298 2566

Goebel Wrecking Co.
18414 St. Rt. 34
Bryan, OH 43506
Tel. 419 636 7111

Local Auto Donations
May be made to:
Christmas for Kids
at Northwest Recycling
call 419 636 5215 for details.

BATTERIES (LEAD ACID)

Most automotive type batteries are lead acid type. These types of batteries are commonly accepted where ever auto parts are sold. Some recycling centers will pay cash for old batteries. Check with scrap metal dealers.



BATTERIES (DRY CELL)

Dry cell batteries are the type commonly found in flashlights, toys, radios etc. Ni-cad dry cell batteries are commonly found in rechargeable items such as power tools, cell phones, laptops etc. These type of dry cell batteries may be dropped off at the Bryan City Recycling Program at 1200 Buffalo Road in Bryan. There is a special container in the parking lot area to drop the batteries into. Rechargeable batteries must have the terminals taped to prevent fires or explosions.



BOOKS

Check with local libraries to see if they will accept for book sales. Triangular Processing located on WiltonKeck Recycling in Bryan, Ohio accepts hardback books for recycling. Call 419 636 3606





CARDBOARD

Cardboard is easily recycled. Boxes should be flattened to save space. Remove all plastic and foam packaging. Do not include oily or food contaminated cardboard. Cardboard is accepted at Northwest Recycling 12475 County Road H Bryan, and at Bryan City Recycling 1200 Buffalo Road.



CHRISTMAS TREES

Christmas trees may be recycled at Oberlin Farms Country Store at 04103 County Road 15-D Bryan, OH. All lights and decorations must be removed. Tel. 419 636 1460



CLOTHING

Sell used clothing at garage sales or donate to family and friends. Most charity stores accept clothing by donation. Please be certain that clothing is clean and useable.

The following organizations accept clothing:

Christian Women United Thrift Shop

200 N. Union St.

Bryan, OH 43506

419 636 7777

Goodwill Industries

1210 S. Main St.

Bryan, OH 43506

419 636 1200

See & Do Club

220 Depot St.

Montpelier, OH 43543

419 485 3777

COMPUTERS

The Williams County Recycling Program conducts an Electronics Recycling Event in the spring and fall of the year.

CELL PHONES

Unused cell phones may be dropped off at any Senior Center in Williams County for recycling. Money raised from the phones is used for transportation of seniors.



COMPOSTING

Yard waste is no longer accepted in local landfills. Composting is available in most villages throughout Williams County. Check with your village or township officials to determine if you have pick-up or drop-off services available. For items such as Christmas trees and tree limbs, check with Oberlin Demolition & Recycling 419 636 4160. Check the Ohio EPA web site for registered compost facilities. (www.epa.state.oh.us) Back yard composting is a great way to handle your yard waste. It also provides great soil enrichment for any of your gardening projects.



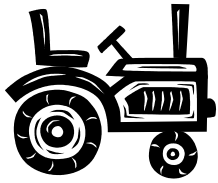
HOW TO MAKE A COMPOST PILE

First spade up the soil in the compost site. You may want to place a wire fence on the site or tie together old pallets to contain the materials. Then start layering in the materials. Layer in leaves and grass. Then layer in a small amount of soil and a little bit of commercial fertilizer to help speed up the decomposition process. Just keep layering the materials as you go. You may also add other types of organic materials from your kitchen such as vegetable peelings, egg shells, coffee grounds etc. Do not add meat scraps as this will attract unwanted wildlife and create foul odors.

COMPOSTING (CONT.)

It is important that the compost pile has moisture and oxygen for it to work properly. Adding water may be necessary during dry weather. The pile should be slightly moist, similar to a wrung-out sponge. The pile should be occasionally stirred or turned over to incorporate oxygen.

Heat is generated during the composting process. You may notice steam arising from the pile during cold weather. Once the process has completed, the compost is ready for use as a soil enhancer for vegetable and flower gardens. Check the Ohio EPA web site for more details. ww.epa.state.oh.us



FARM MACHINERY

Reitzel Farm Equipment
11977 St. Rt. 49
Edon, OH 43518
419 272 2680

Sumner Equipment
County Road R
Pioneer, OH 43554
419 459 4811



FLUORESCENT BULBS

Compact Fluorescent bulbs from households may be taken to Northwestern Electrical Cooperative at 04125 St. Rt. 576 Bryan, Ohio for proper disposal. (Limit 10).

Bryan City residence may take compact Fluorescent bulbs to the Municipal Utilities Office at 841 E. Edgerton St. Bryan. (Limit 10). Check with your local village office.

All commercial and industrial generators must contact an approved handler to dispose of Fluorescent bulbs. Please be advised that there is a fee involved. Some stores such as Home Depot and Lowes have Fluorescent bulb recycling programs. Call first.

FUEL TANKS

A completely empty metal fuel tank may be taken to Northwest Recycling or to local auto salvage yards. Please be sure that all fuel has been drained out. (No pressurized tanks)

Please call if you have questions.

Northwest Recycling -419 636 5215
Auto Impact -419 485 8122
Edgerton Auto Salvage - 419 298 2566
Goebel Wrecking - 419 636 7111



FURNITURE

Sell old furniture at garage sale or donate to friends and family.
The following local charities accept furniture as donation:

Grace Community Church
206 W. Bement St.
Bryan, OH 43543
419 636 5449

Goodwill Industries
1210 South Main
Bryan, OH 43506
419 636 1200

Sanctuary of Williams County
214 S. Main St.
Bryan, OH 43506
419 636 2460

See & Do Club
220 Depot St.
Montpelier, OH 43543
419 485 3777

FURNITURE POLISH

Empty containers may be placed in trash. Less toxic alternative is to make your own. Three parts olive oil to one part vinegar.

GLASS

Recycle glass **bottles and jars** at the Bryan City Drop-off site at 1200 Buffalo Road in Bryan. Only clear and brown glass bottles and jars are accepted. No other type of glass is accepted for recycling.

No window glass, light bulbs, mirrors ceramics etc.



GLASSES

Contact local Lions Club member.



INK CARTRIDGES

Check with the supplier to determine if empty cartridges may be returned. If you have a Dell printer, you may go online for free recycling by mail. Other suppliers may have similar programs.



MAGAZINES

Magazines may be dropped off at the Bryan City Recycling Program 1200 Buffalo Road or at Northwest Recycling 12475 County H Bryan.



MERCURY

Contact the Williams County Solid Waste Reduction & Recycling Program at the Williams County Health Department to arrange for proper recycling. Never dump on the ground or put down the drain. Extremely dangerous!



SCRAP METAL

Check with local scrap dealers.

MOTOR OIL



Recycling your motor oil helps the environment and saves energy. Never dump oil on the ground, in the trash or in waterways. Used oil can be recycled or used as heating fuel at some locations. Most service stations have oil recycling capabilities. Some may charge a fee.

The following locations accept used oil for recycling. Please call for specific information.

Bob's Marathon
402 S. Main St
Bryan, OH 43506
419 636 4288

Casebere Motors
05768 St. Rt. 15
Bryan, OH 43506
419 636 4594

Autozone
1205 South Main St
Bryan, OH 43506
419 636 1183

Bryan Ford
920 North Main
Bryan, OH 43506
419 636 1156

Maxton Motors
1248 East Main St.
Montpelier, OH 43543
419 485 3181

Mike's Auto Repair
12613 St. Rt. 20
Pioneer, OH 43554
419 485 4112

Walmart
1215 South Main St.
Bryan, OH 43506
419 636 1156

Williams County Garage
12953 Co. Rd. G
Bryan, OH 43506
419 636 2454



PAINT

To properly dispose of paint it must be completely dry before placing it in the trash. This can be accomplished by mixing in an absorbent such as cat litter, floor-dry, saw dust or vermiculite. Some paint stores sell a paint drying accelerator to mix into the bucket. Once the paint has dried to a solid form, it may be placed in your regular household trash. Sometimes local play shops will accept paint for designing sets. You can also check with friends and neighbors to see if they may have a use for it.



PAPER

Nearly half of what we throw away is paper. Paper is one of the easiest materials to recycle. Both curbside and drop-off recycling programs accept newspaper for recycling.

Magazines are accepted in the curbside recycling programs but not in the drop-off trailers. The Bryan City Recycling program has a drop-off container for magazines at 1200 Buffalo Road. Northwest Recycling also accepts magazines for recycling at 12475 County Road H, Bryan.

PESTICIDES

Pesticides are chemicals that are specifically designed to be toxic to those organisms that we consider pests.

The best way to minimize the hazards of pesticides is to know what you are using and how to use it. Read and follow the directions on the label. Use up pesticides in the proper method and dispose of the empty containers in your regular household trash. Do not recycle pesticide containers in household recycling programs.

Occasionally there are special collection events for large agricultural programs through chemical dealers.

Check with neighbors or friends that may have use for left over products.

Residential use products may be placed in the regular trash. The product should be placed in plastic bags to prevent spillage.

Try to utilize natural nontoxic products whenever possible

PLASTICS

There are many types of plastics used by manufactures for materials and packaging. The curbside and drop-off recycling programs in Williams County only accept plastic bottles with the recycling symbol 1 or 2 on the bottom. No oil bottles are accepted because the oil residue creates a hazardous waste. No other types of plastic are currently accepted in the residential recycling programs



PROPANE TANKS

Contact local propane dealers and welding shops.

SPORTING GOODS

Instead of throwing out old sporting goods try selling them or donate them to local athletic clubs. Goodwill also accepts good used sport equipment for donation.



TIRES

Tires can be recycled through local tire vendors for a fee. Large quantities of tires may be taken to the Henry County Landfill in Malinta, Ohio for proper disposal. Call them for details and prices 419 256 7343. The Williams County Solid Waste Reduction & Recycling Program conducts a special tire collection event in August. Ads are placed in local news media.

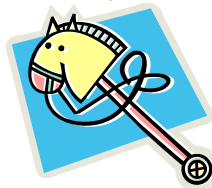


TOILET BOWL CLEANER

Toilet bowl cleaners and many other types of household cleaners may contain muriatic acid, oxalic acid or calcium hypochlorite which are toxic and corrosive. When using this material, follow instructions carefully. Never mix with bleach as this will emit a toxic gas. A less toxic alternative is to use lemon juice and Borax. Another environmentally friendly cleaner is baking soda.

TOYS

Sell old toys at garage sales or donate to other families. Toys may also be taken to charitable organizations such as Goodwill.



MONTHLY RECYCLING DROP-OFF SCHEDULE
FOR COLLECTION TRAILERS

FIRST WEEKEND

ALVORDTON - AT MADISON TWP. BUILDING, 310 ANDERSON
SUPERIOR TWP. - AT RIVERSIDE CEMETARY
10668 ST. RT. 107 MONTPELIER

FIRST WEDNESDAY

KUNKLE - NEXT TO FIRE STATION 104 ANGOLA ST.
SPRINGFIELD TWP. - 200 DEPOT ST. STRYKER

SECOND WEEKEND

JEFFERSON TWP. - BEHIND ENRICHMENT CENTER BUILDING
11246 STATE ROUTE 15 MONTPELIER
CENTER TWP. -BEHIND CENTER TWP. BUILDING
04266 COUNTY RD. 12

SECOND WEDNESDAY

ST. JOSEPH TWP. BUILDING
317 RAILROAD ST. EDGERTON

THIRD WEEKEND

BLAKESLEE - BEHIND SAM'S PLACE, 212 MADISON ST.

THIRD WEDNESDAY

WEST UNITY -VILLAGE PARKING LOT
109 S. MAIN ST

FOURTH WEEKEND

NORTHWEST TWP. - NW TWP FIRE STATION
16473 STATE ROUTE 49 EDON

**ACCEPTABLE ITEMS
FOR RECYCLING TRAILER**

NEWSPAPER

BUNDLED IN PAPER BAGS OR LOOSE. SLICK ADS ARE ACCEPTABLE.
NO MAGAZINES

STEEL CANS

RINSE, DRAIN AND FLATTEN IF YOU WANT.

ALUMINUM CANS

DRAIN, THEN FLATTEN IF YOU WANT.

PLASTIC BOTTLES

MUST BE A PLASTIC BOTTLE WITH THE NUMBER 1 OR 2 IN THE
RECYCLING SYMBOL. EXAMPLES
INCLUDE: MILK JUGS, DETERGENT BOTTLES, BLEACH BOTTLES,
SHAMPOO BOTTLES AND SODA BOTTLES. RINSE, DRAIN AND
FLATTEN.

**NO OIL BOTTLES, BAGS, TUBS, TOYS OR ANY OTHER TYPE OF
PLASTIC!**

NO GLASS ACCEPTED!