

Aftermarket HDS Multiplatform Software Installation Instructions

This document contains instructions for all three HDS platforms. **HDSMPFxxxxxxx** is universal for the latest version of HDS software.

Option 1 is for HDS PC and CM Update PC software installation.

Option 2 is for HDS and CM Update Pocket Tester software installation.

Option 3 is for HDS and CM Update GDS2200 Tablet installation and OS update if required.

Minimum PC Requirements:

1. Microsoft® Windows® 2000 Professional (SP4 or later) or XP (SP1 or later).

Note 1: Administrator privileges are required before installing HDS.

Note 2: Windows NT® 4.0, Windows 95, Windows 98 and Windows Me are not supported.

2. CD-ROM drive.

3. USB or RS232 serial port.

Note: If a RS232 port is not available, see Appendix.

4. Hard disk drive with at least 500MB of free space.

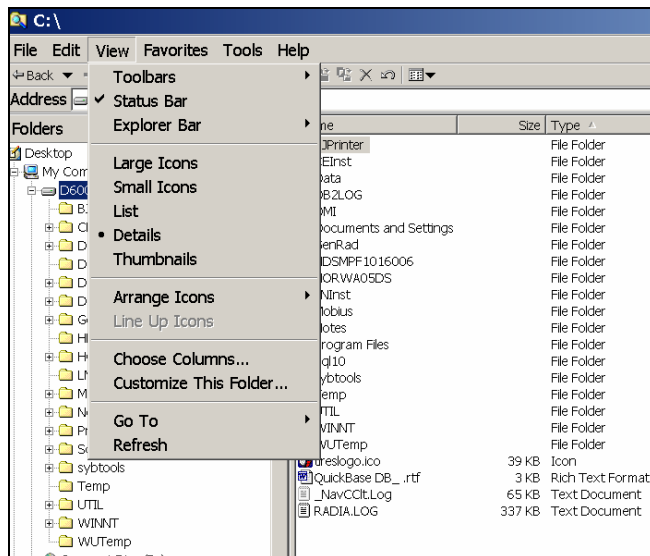
5. Monitor capable of displaying in VGA mode or above.

6. Keyboard and Mouse.

7. 256MB PCMCIA Memory Card (for GDS2200 Installation only)

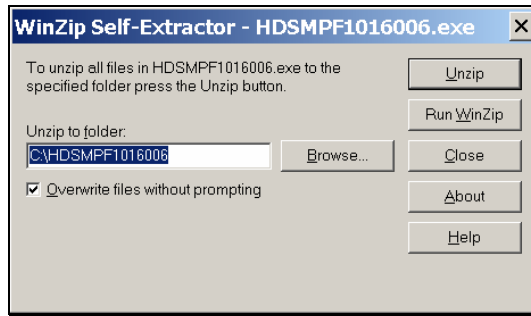
Installation Preparation

1. Quit all other running programs.
2. Turn off screen saver.
3. Select **Details** in the View menu bar of Windows Explorer.

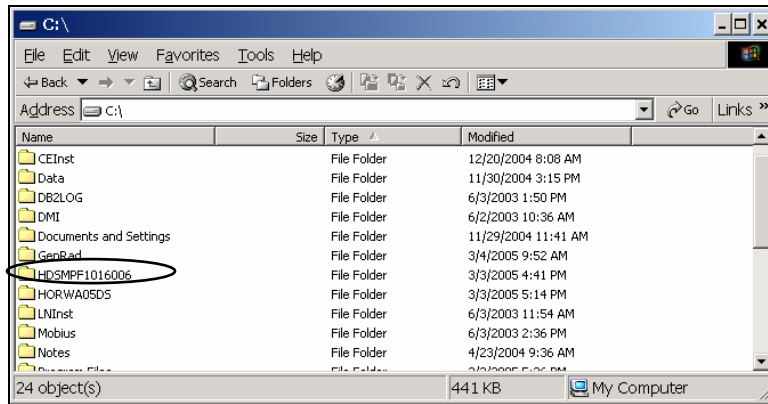


4. Download the file **HDSMPFxxxxxxx.exe** from the HELM site to your PC desktop.
5. Double-click the **HDSMPFxxxxxxx.exe** file to extract the HDS Installation Software.
6. Confirm the "WinZip Self-Extractor – **HDSMPF1016xxx.exe** unzip to folder is **C:\HDSMPFxxxxxxx**.

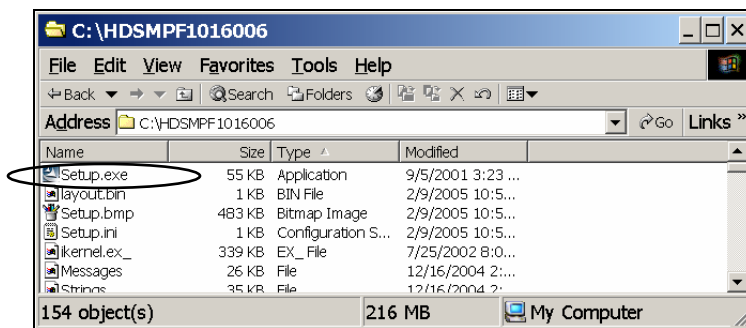
7. Select the **Unzip** button.



8. The unzip process will install the **HDSMPFxxxxxxx** directory on the C:\drive.
9. Confirm "C:\HDSMPFxxxxxxx" was created.

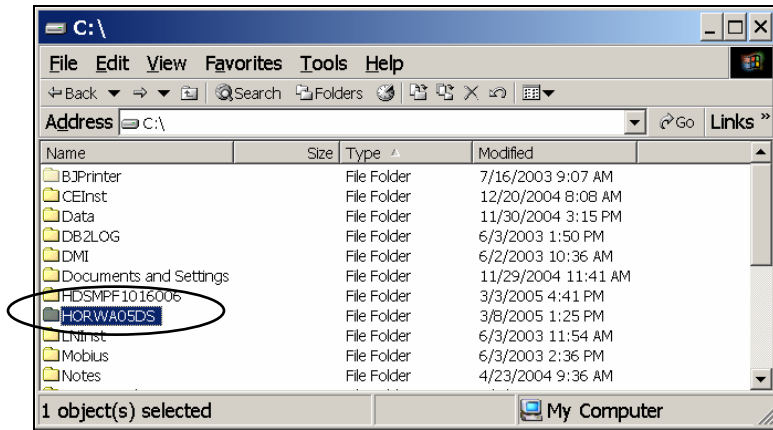


10. Double-click the **HDSMPFxxxxxxx** folder (example: HDSMPF1016006).
11. Locate and double-click "setup.exe"



12. This will install the **HORWA05DS** directory on your computer.
13. If you receive a prompt asking if your PC is connected to the Honda Dealer Network, Select **No**.
14. If you receive a prompt making sure GDS2200 is not connected to a computer, make sure the GDS is not connected to your computer and select **OK**.
15. If you receive a prompt asking to Reboot GDS2200, disregard this request and select **OK**.
16. If you receive a prompt asking to connect the docking station to the PC via USB cable, disregard this request and select **OK**.

17. Confirm the C:\HORWA05DS folder was created.

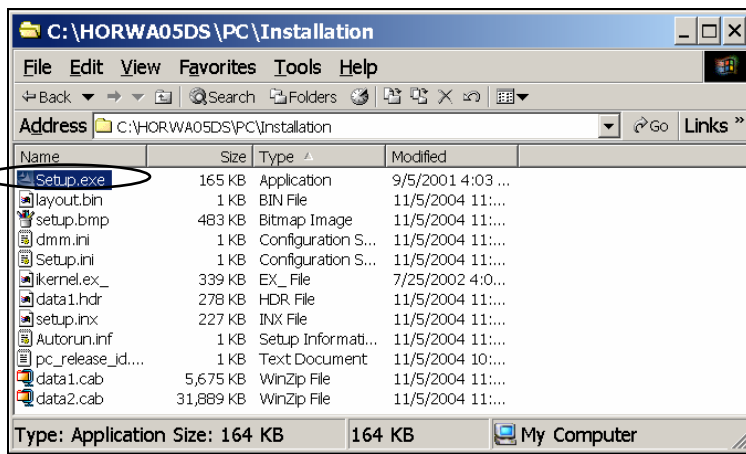


HDS PC and CM Update PC Software Installation

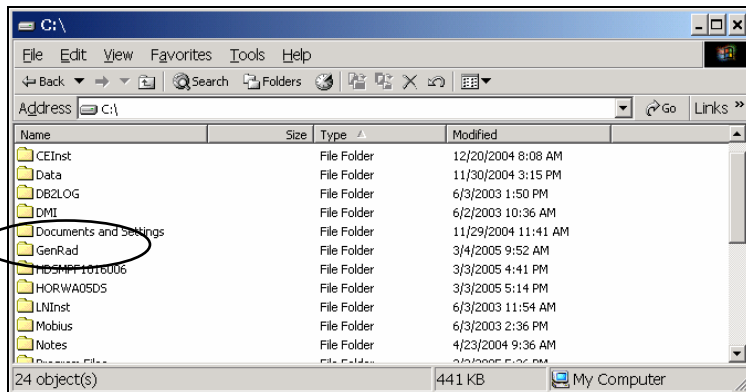
Option 1: HDS PC Software and CM Update (ECU Rewrite) PC installation, follow these steps.

Note: You will need a Honda Interface Module (HIM) and blue PC Interface Cable to connect your PC to the vehicle.

1. Double-click the **HORWA05DS** folder.
2. Inside the **HORWA05DS** folder locate and double-click the **PC** folder
C:\HORWA05DS\PC.
3. Inside the **PC** folder locate and double-click the **Installation** folder
C:\HORWA05DS\PC\Installation.
4. Locate and double-click the **setup.exe**. This will install the HDS PC software.
5. If you are prompted to enter your dealer number, please enter **000000**.



6. Confirm **C:\GenRad** folder was created.



7. Double-click the **Diagnostic System** icon on your desktop to start the HDS PC software.

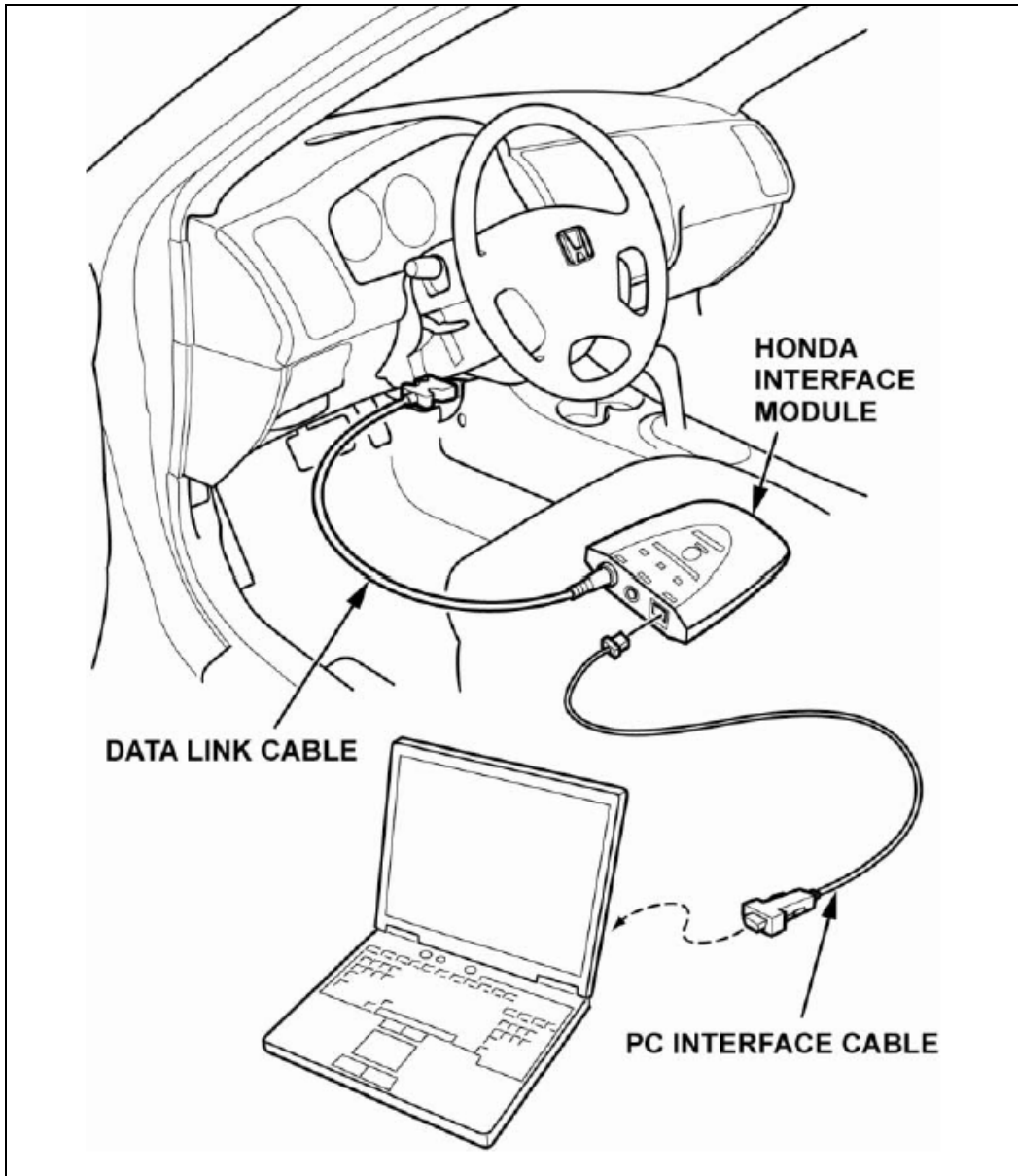


Diagnostic System

- Double-click the "CM Update (ECU Rewrite)" Icon from the Start/All Programs/CM Update (ECU Rewrite) menu to start the CM Update software.



Note: You will need a HIM and blue PC interface cable to connect your PC to the vehicle.



- Connect HIM to vehicle Data Link Connector (DLC).
- Connect blue PC Interface Cable between PC and HIM.
HIM part#TDS35570101
PC Interface cable part#VET02002832

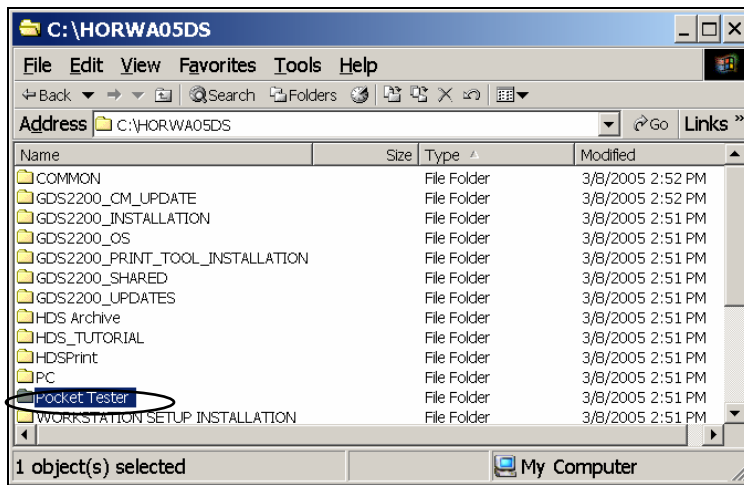
HDS PC and CM Update Pocket Tester Installation

Option 2: To perform the HDS and CM Update Pocket Tester Installation, follow these steps.

Note: Use Active-Sync Cable provided in the kit.

Note: Carefully follow all screen prompts.

1. **DO NOT connect the USB Active-Sync Cable to your host PC until prompted to do so by the installation software.**
2. COMPLETELY charge the battery of your Pocket Tester before beginning this installation.
3. Inside the **HORWA05DS** folder, locate and double-click the **Pocket Tester** folder **C:\HORWA05DS\Pocket Tester**.



4. Inside the **Pocket Tester** folder, locate and double-click the **Installation** folder **C:\HORWA05DS\Pocket Tester\Installation**.
5. Double-click the file **setup.exe**.
6. This will begin the installation of the Pocket Tester Installation Software to your host PC.
7. Read carefully and follow all screen prompts from the installation software exactly. If you are prompted to enter your dealer number, please enter **000000**.
8. When prompted, connect the active-sync cable to your pocket tester and the host PC via the USB port. If your computer is not equipped with a USB port, you may connect to your serial port.
9. Confirm the **HDS Pocket Tester Installer** Icon is on your desktop. HDS Pocket Tester installation is complete.
10. Double-click the "HDS Pocket Tester Installer" icon to install HDS software on additional pocket testers.



HDS Pocket Tester Installer

HDS PC and CM Update Tablet Tester Installation

Option 3: To perform the HDS and CM Update Tablet SW Installation, follow this procedure.

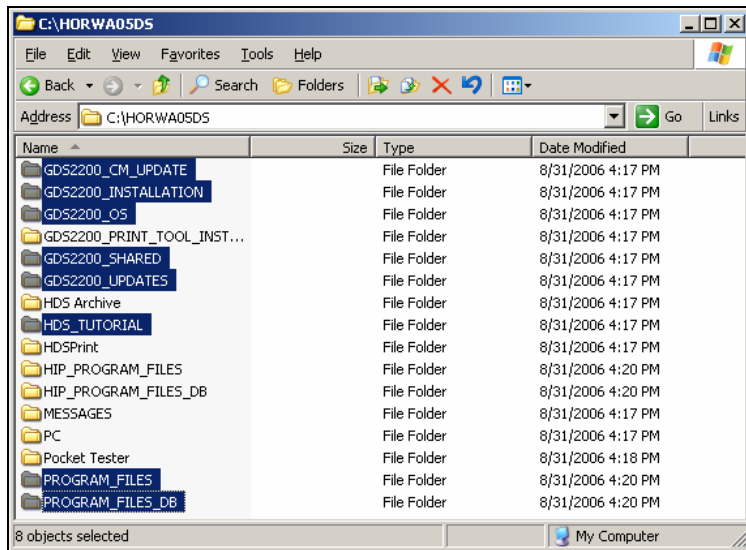
Note: Follow these instructions very carefully.

Note: Carefully follow all screen prompts.

1. Remove the PCMCIA card from the HDS Tablet.
2. Insert the PCMCIA card into your PC.

Note: If your PC does not have a PCMCIA card slot, you will have to use an appropriate adapter.

3. On the PCMCIA card, locate and double-click to open the folder called **HORWA05DS**.
4. Select all contents by pressing Ctrl-A. Then hit the Delete button. This will delete all the old contents of the HORWA05DS folder on the PCMCIA card.
5. Any other unnecessary personal files on the storage card must also be deleted. There is not enough memory to accommodate the HDS SW and other files.
6. Open Windows Explorer and locate the "C:\HORWA05DS" folder. Double-click to open the HORWA05DS folder.
7. Select **Name sort** with the arrow pointing up. Select the highlighted folders.

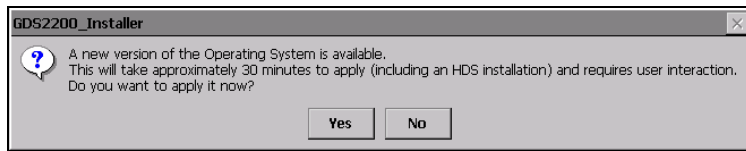


8. Copy these folders and paste them into the HORWA05DS folder on the PCMCIA card
9. Remove the PCMCIA card from the PC or adapter.
10. Insert the PCMCIA card into the HDS tablet tester.
11. Turn on the HDS tablet tester.
12. Open **My Computer** on the HDS tablet by double tapping the icon located on the desktop. (You may have to exit the HDS software.)
13. Open the **storage card** folder.
14. In the storage card folder, locate the folder called **HORWA05DS**. Open the folder and locate the directory **GDS2200_INSTALLATION**. Inside this directory double tap **GDS2200_Installer.exe** to start the installation.

15. This release requires Windows CE 4.1 Operating System or greater. If your GDS2200 is not up-to-date you will be asked to update your OS. *Follow all GDS2200 prompts below. The operating system update must be installed before installing the new HDS Tablet software.*
16. Once the operating system update is complete, the **GDS2200_Installer.exe** will re-launch automatically and will install the HDS software.

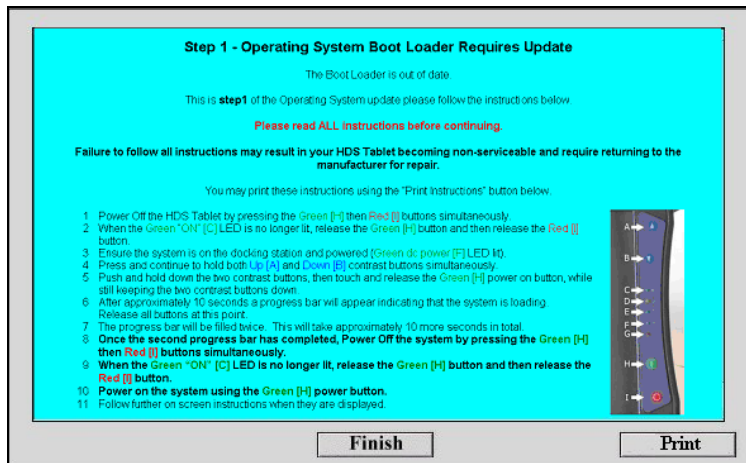
GDS2200 CE Operating System Update Procedure

Double click **GDS2200_Installer.exe** to start the installation. If an OS update is needed, you will need approximately 30 minutes. Choose **Yes** when you see the following prompt:

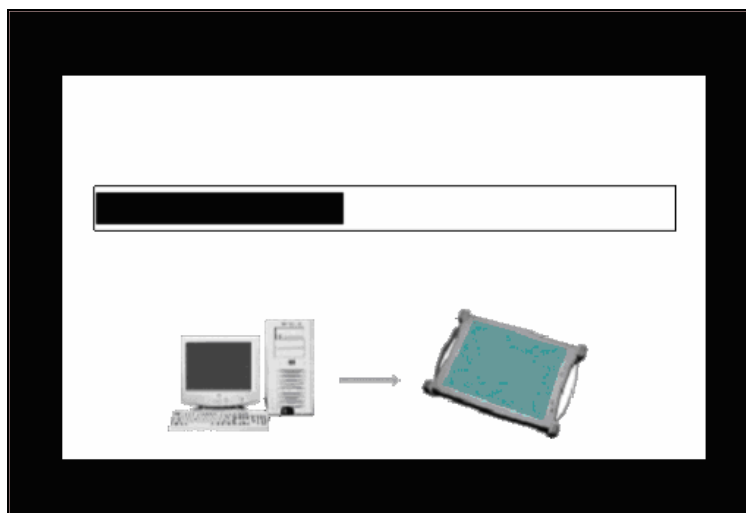


Follow the on-screen instructions. **This is Step 1.** (Subsequent updates may not need to perform this step; if this is the case, then the process will begin at step 2.)

NOTE: These instructions are available in the appendix at the end of this document.

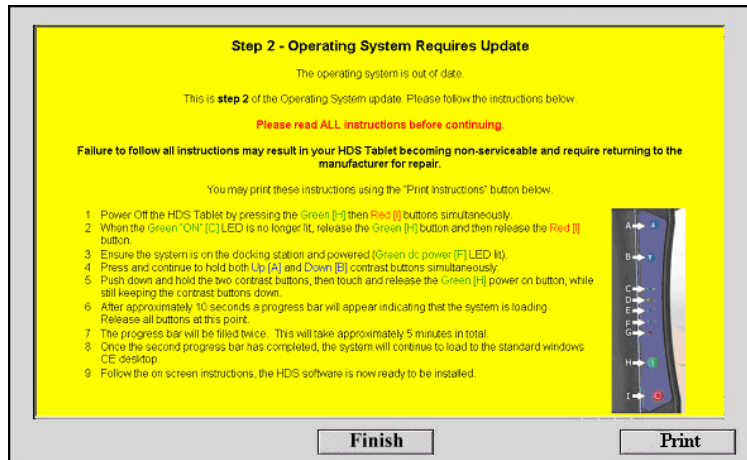


While step 1 of the operating system update is in progress, the bar graph shows the current status. This Bar graph will complete two times; **when this has completed for the second time and the progress bar is no longer moving the HDS tablet tester requires REBOOTING! Reboot the tablet tester.**

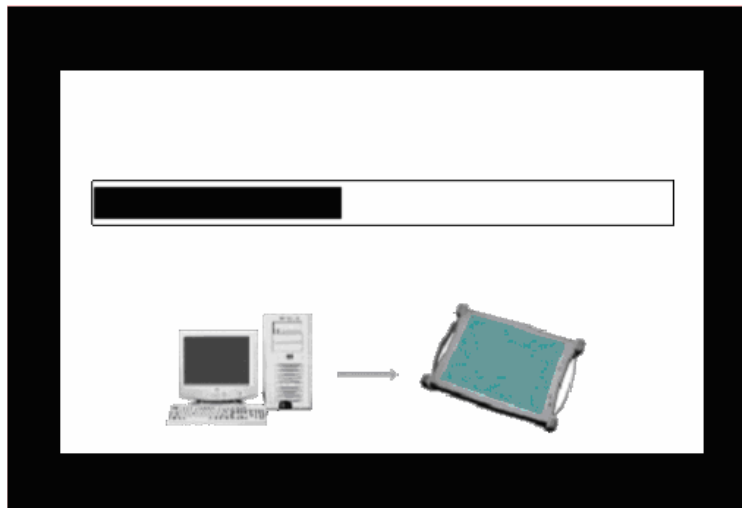


This is step 2.

NOTE: These instructions are available in the appendix at the end of this document.



While step 2 of the Operating System update is in progress, the bar graph shows the current status. This bar graph will complete two times.

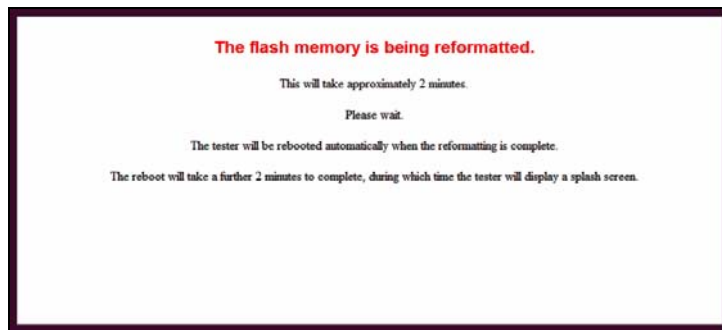


After the bar graph has complete two times the Teradyne Diagnostic Solutions screen will appear for approximately 4 minutes. Do not touch the Tablet screen or undock the Tablet during this screen.



This is Step 3.

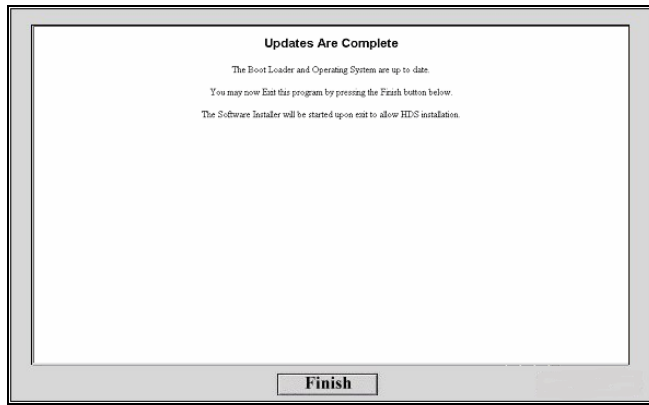
The tester will reboot automatically. It may take up to 2 minutes for the reboot to complete. When the tester has rebooted, the following screen will be displayed.



After approximately 2 minutes, the tester will be rebooted again. This reboot may take up to a further 2 minutes to complete, during which time the following screen will be displayed.



Once the Operating System has been successfully installed, click **Finish**.



The HDS software will automatically load. Follow all screen prompts carefully.

Appendix: Operating System Update

Operating System Update – Step 1, Operating System Boot Loader Requires Update

- 1 Power Off the HDS Tablet by pressing the Green [H] then Red [I] buttons simultaneously.
- 2 When the Green "ON" [C] LED is no longer lit, release the Green [H] button and then release the Red [I] button.
- 3 Ensure the system is on the docking station and powered (Green dc power [F] LED lit).
- 4 Press and continue to hold both Up [A] and Down [B] contrast buttons simultaneously.
- 5 Push and hold down the two contrast buttons, then touch and release the Green [H] power on button, while still keeping the two contrast buttons down.
- 6 After approximately 10 seconds a progress bar indicating that the system is loading will be displayed. Release all buttons at this point.
- 7 The progress bar will be filled twice. This will take approximately 10 more seconds in total.
- 8 Once the second progress bar has completed, Power Off the system by pressing the Green [H] then Red [I] buttons simultaneously.
- 9 When the Green "ON" [C] LED is no longer lit, release the Green [H] button and then release the Red [I] button.
- 10 Power on the system using the Green [H] power button.
- 11 Follow further on screen instructions when they are displayed.



Fig. 43

Operating System Update – Step 2, Operating Systems Requires Update

- 1 Power Off the HDS Tablet by pressing the Green [H] then Red [I] buttons simultaneously.
- 2 When the Green "ON" [C] LED is no longer lit, release the Green [H] button and then release the Red [I] button.
- 3 Ensure the system is on the docking station and powered (Green dc power [F] LED lit).
- 4 Press and continue to hold both Up [A] and Down [B] contrast buttons simultaneously.
- 5 Push down and hold the two contrast buttons, then touch and release the Green [H] power on button, while still keeping the two contrast buttons down.
- 6 After approximately 10 seconds a progress bar will appear indicating that the system is loading. Release all buttons at this point.
- 7 The progress bar will be filled twice. This will take approximately 5 minutes in total.
- 8 Once the second progress bar has completed, the system will continue to load to the standard windows CE desktop.
- 9 Follow the on screen instructions. The HDS software is now ready to be installed.



Fig. 44

Appendix: USB-to-serial adapter for the Honda Diagnostic System

Introduction

This appendix is for users of the Honda Diagnostic System (HDS) software on a PC with the Honda Interface Module (HIM) and a computer that has a USB port, but does not have an RS-232 DB 9-pin male serial port. A USB-to-serial adapter may be used to communicate between the HIM and your computer. American Honda Motor Co., Inc. has tested these adapters:

- Belkin F5U409 Portable USB-to-serial adapter
- Micro Innovations USB to RS232 Serial Adapter
- Coolgear USBG-232 USB-to-serial adapter

All these adapters are designed to work with Microsoft Windows XP/2000 operating systems.

System Requirements

- AMD or Intel Pentium 133MHz or faster computer equipped with a USB 1.1 or higher port
- Windows 2000 or Windows XP operating system
- Latest version of the HDS software
- USB-to-serial DB 9-pin adapter
- Software driver provided by the USB-to-serial adapter manufacturer
- HIM

Important Note: The USB-to-serial adapter will be functional with the HIM only by mapping the USB-to-serial adapter to COM1.

Installing the Device

This section gives general guidance on how to install the USB-to-serial adapter under the Windows 2000 or Windows XP operating systems. It is best to read and follow the installation manual that came with your USB-to-serial adapter.

Note: It is strongly recommended you exit all Windows programs prior to installing your USB-to-serial adapter software drivers. Installation procedures may be unique with each manufacturer. Always read and follow the manufacturer's recommendations.

The following details how to install the Belkin F5U409 USB-to-serial adapter under Windows 2000. This procedure is representative of the installation of other USB-to-serial adapters and for computers using the Windows XP operating system.

1. Power-up your computer and boot to Windows. Make sure you have administrator privileges to install software on your system.
2. Install the driver software that came with your USB-to-serial adapter. Some manufacturers request that you install the software drivers prior to plugging in the USB-to-serial adapter. Others request the USB-to-serial adapter be plugged in first, and have Windows browse for the software provided on a CD-ROM. During installation, Windows may prompt you that this device driver has not yet passed Windows 2000 or XP Logo compatibility. Click **Continue Anyway**.

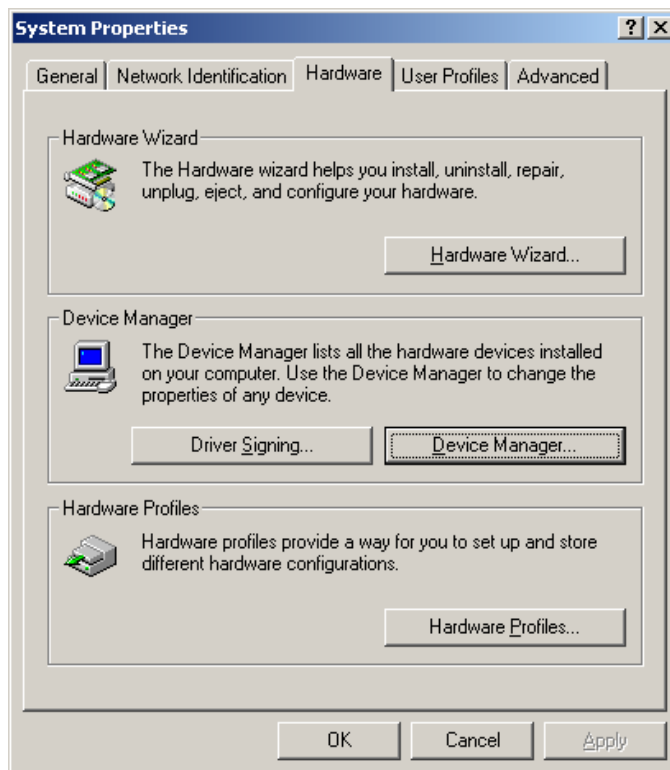
3. Windows will then start to install the software driver for your USB-to-serial adapter. Once installation is complete, Windows will prompt you that it has finished installing the software. Click **Finish** to complete the setup. It is best to reboot your system before plugging in the USB-to-serial adapter.

Verifying the Installation

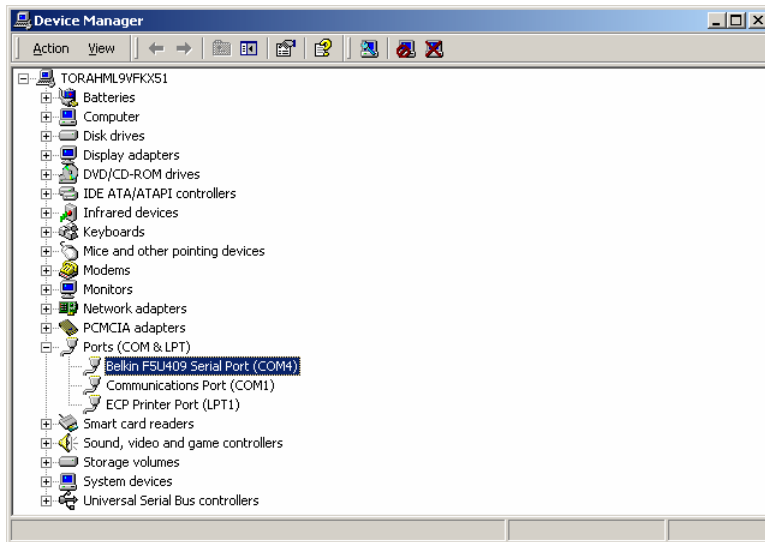
This section details how to verify that the USB-to-serial adapter was properly installed. You also need to determine the COM port assignment made by Windows for the USB-to-serial adapter.

To verify if the device is properly installed and to determine the COM port assignment of the USB-to-serial adapter, do the following procedure.

1. Click on **Start, Settings, Control Panel**, and then click on the **System** icon. Inside **System Properties**, click on the **Hardware** tab and click on the **Device Manager...** button.



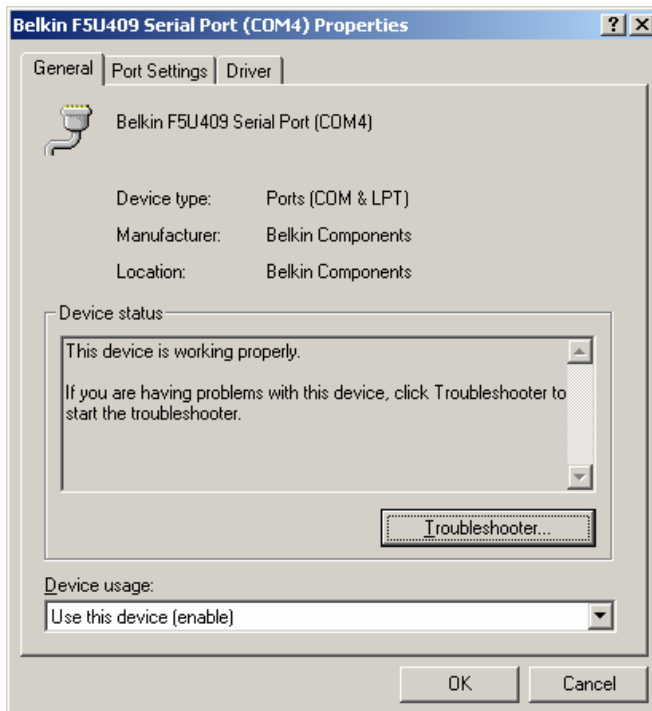
2. Double-click on **Ports (COM & LPT)**. If the USB-to-serial adapter is already plugged in, you will see the USB-to-serial (COM4) device listed. This means that Windows has assigned the USB-to-serial adapter to the COM4 port.



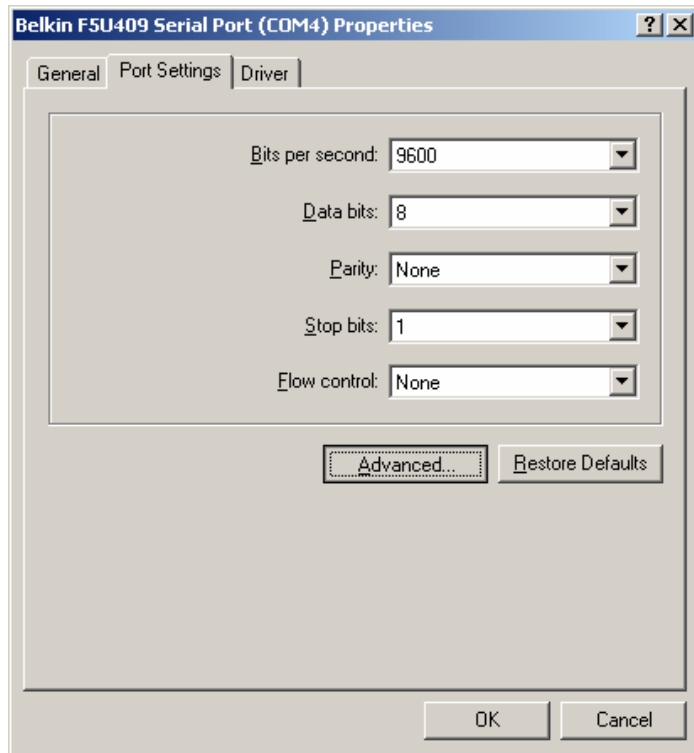
The COM port assignment of the USB-to-serial adapter varies, depending on your computer hardware setup and configuration. Windows checks which COM port is unused or free in your computer and automatically assigns a port number to the USB-to-serial adapter.

Important Note: The HIM functions only on COM1.

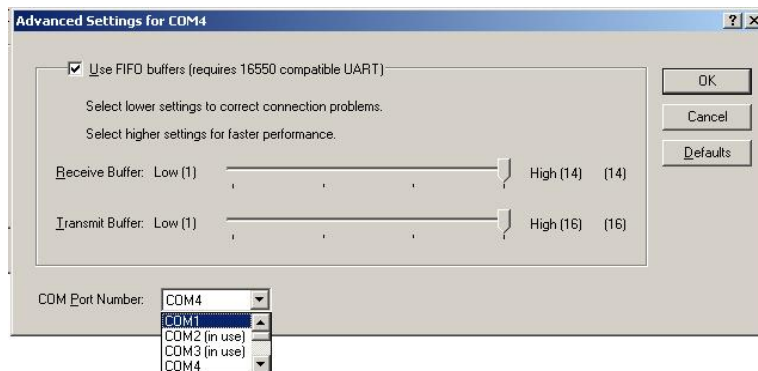
3. If the USB-to-serial adapter is not already on COM1, you must assign the COM port of the USB-to-serial adapter to the COM1 port number. Double-click on the USB-to-serial COM port to view properties.



4. Inside the USB-to-serial COM port properties, click on the **Port Settings** tab. Click on the **Advanced...** button.

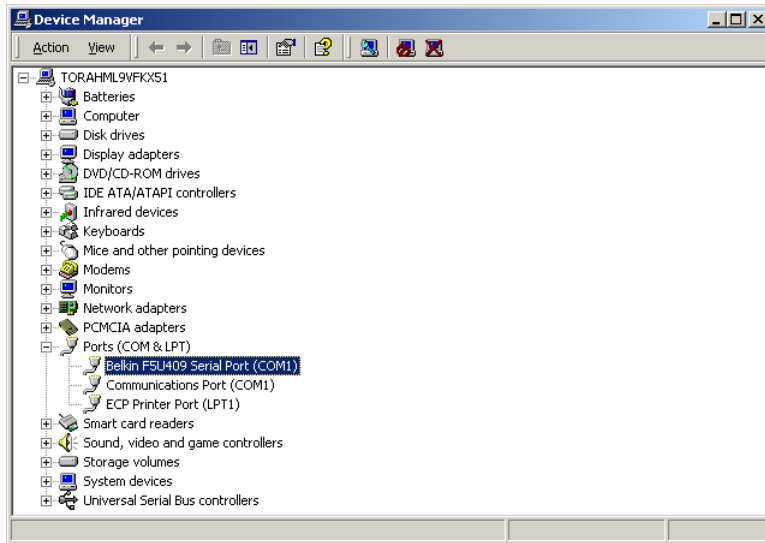


5. Inside the **Advanced Settings** screen, click on the **COM Port Number**. Example: If Windows assigned COM4 to your USB-to-serial adapter, you must reassign it to COM1. Click **OK** when finished.



Note: Any other device that was previously assigned to COM1 may no longer function correctly.

Your USB-to-serial adapter should now be assigned to COM1.

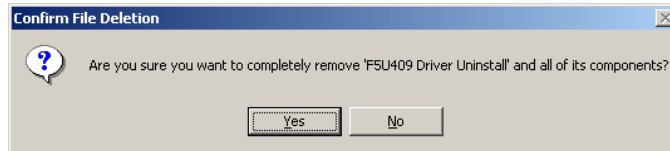


6. Once you have verified the USB-to-serial adapter is properly installed and assigned to COM1, you may now connect it to the HIM. Note that to avoid possible damage, the HIM must have power applied through either the DLC or its approved power supply (VET2001723) before connection to the PC. Attach the serial connector of the HIM to the serial port of the adapter, and then plug in the USB connector to the USB port of your computer. Proceed with normal usage of the HDS with the HIM.



Uninstalling the USB-to-serial adapter Driver

In the event you need to uninstall the drivers for the USB-to-serial adapter, follow the user manual provided with the device. Generally you can go to the **Control Panel**, click on **Add/Remove Programs**, highlight the USB-to-serial adapter and click on the **Change/Remove** button. Confirm the deletion by clicking on the **Yes** button. Click **Ok** to finish. If the COM1 port was used for a device prior to installing the USB-to-serial adapter, the port may need to be reset for that device.



Disclaimer

Information in this document is subject to change without notice. American Honda Motor Co., Inc. does not make any representations or warranties (implied or otherwise) regarding the accuracy and completeness of this document and shall in no event be liable for any loss of profit or any other commercial damage, including but not limited to special, incidental, consequential, or other damages. Commercial product used does not constitute an endorsement or recommendation. No part of this document may be reproduced or transmitted in any form by any means without the express written permission of America Honda Motor Co., Inc. All brand names and product names used in this document are trademarks or registered trademarks of their respective holders.