

- ◆ Ag Leasing Workshop (Hunting, Grazing, Livestock Leases) – Cat Spring Ag Hall – *February 26, 2018 (Flyer Attached) \*\*FREE\*\**
- ◆ Washington County Horticulture Committee Tomato & Pepper Plant Sale – *Now Accepting Orders (Flyer & Order Form Attached)*
- ◆ Multi-County New Landowner Series – *3rd Friday of Each Month February-May & August-November (Flyer and Brochure Attached) (CEUs)*

### **Ranchers Leasing Workshop – Cat Spring Ag Hall – February 26, 2018**

The first of the 2018 Rancher Leasing Workshops series covering grazing, hunting, and livestock leases is scheduled for **Monday, February 26, 2018** in Cat Spring by the Texas A&M AgriLife Extension Service.

The workshop addresses the legal risks associated with agricultural leases, said Tiffany Dowell Lashmet, AgriLife Extension agricultural law specialist in Amarillo. The goal is to educate landowners and producers on the importance of utilizing written leases as a risk management tool. The workshop will be from 9 a.m.-1 p.m. at the Cat Spring Ag Hall, 13035 Hall Road, Cat Spring. The free program is funded by the Southern Extension Risk Management Education Center.

***Lunch will be provided by Ag Workers Insurance. Participants will need to RSVP by February 19th by calling Kara Matheney, AgriLife Extension Agriculture and Natural Resources Agent for Washington County, at 979-277-6212 or by visiting <https://washington.agrilife.org/event/free-ranchers-leasing-workshop-cat-spring/>***

Joining Lashmet on the program will be Greg Kaase, AgriLife Extension economist in College Station. “We will discuss the potential legal implications of failing to have a sufficient written lease and the potential legal issues and litigation that the development of written leases can help avoid,” she said. “The workshops will also familiarize participants with key terms and provisions that should be considered in lease negotiations.”

Participants will receive a leasing handbook that covers legal issues, designing lease payment structures and calculating payments, and landowner liability. The book also will provide checklists and sample lease forms for negotiating lease agreements.

This program was held at four locations in 2017 and surveys of 250 participants came back 100 percent saying they would recommend this program to their family and friends. The program will be scheduled at multiple locations later this year, Lashmet said.

### **Washington County Horticulture Committee Tomato & Pepper Plant Sale – Now Accepting Orders**

Calling all gardening enthusiasts! It’s that time of year again and we wanted you all to be the first to know that the Annual Tomato and Pepper Plant Sale is officially here and we are ready to take orders. The varieties featured have all been selected by Washington County Horticulture Committee Members and are suitable for our area!

This year the lineup features 12 tomato varieties including several new options. In addition to some new tomato varieties we will be offering cilantro, dill, and parsley as part of the sale! Also included in the selection will be 3 varieties of bell peppers, 3 varieties of jalapenos, eggplant, squash, and zucchini! A brief description of each tomato variety is included on the back of the flyer; we have put some basic information together to help you make the best decision!

If the great selection and confidence in the proper varieties for our area isn’t enough, we are also offering these plants at \$2.25/pack of 4! Plus, all proceeds from this sale benefit the youth of Washington County through scholarship. Each year the Horticulture Committee works to identify graduating seniors pursuing an agricultural degree who are deserving of a scholarship and will award these in May at the school assemblies.

Order forms are available online at <http://washington.agrilife.org/> or at the Washington County Extension Office. All orders must be paid for when they are placed and no orders will be accepted without payment. For more information on the Tomato and Pepper Plant Sale please call the Extension Office at (979) 277-6212.

***Orders are due by March 16<sup>th</sup>! - Don’t delay, order today!***

***Pick-Up will be on Tuesday March, 27 from 10:00am-5:30pm at the Washington County Fairgrounds Sales Facility in Brenham!***

## **Multi-County New Landowner Educational Series – 3<sup>rd</sup> Friday of February-May & August-November**

The Multi-County New Landowner Education program is a series of 8 informational meetings, seminars, and field days designed to make new landowners in Austin, Colorado, Fayette, & Washington Counties aware of what types of agricultural enterprises are best for their property. Participants in the program will hear from experts in a variety of fields in agriculture about best management practices that can be implemented on their own property. This innovative program assists new landowners in understanding the concepts of rural living. Participants in the program are given exposure to ideas on raising livestock and horses, plant identification, fence building, applying pesticides, soil testing, stock pond management, pond construction, fruit and nut production, rain water harvesting, turf management, and much more. The program also serves as a way for new residents of the four counties to network and meet new people in their communities, find out what can be done on their land, what operations can be successful, and possibly what opportunities they have to serve the community.

The programs will be held on the ***third Friday of the months of February through May and August through November***. Each month's meeting will be held at different locations in one of the four counties. The meetings begin at 1:30pm and will last between 4 and 5 hours depending on the topic and possible tour stops. The cost for the program series is \$125.00 per person, \$200.00 per couple for all eight meetings, \$20.00 per person per meeting. Continuing Education Units (CEU's) for pesticide applicators will be offered as they are applicable. A great selection of refreshments will be provided at each session. Participants who sign up for the **entire series** will receive a notebook at the beginning of the series to fill as we progress through the program with handouts and reference material that will be useful as they move forward with improvements on their property.

**February 16th** – Introduction (Ag & Wildlife Tax Valuation)

**March 16th** – Pond Management

**April 20th** – Weed and Brush Control

**May 18th** – Forage Production & Livestock Production

**August 17th** – Bees and Trees for Homeowners

**September 21st** – Horticulture Production

**October 19th** – Wildlife Management, Native Grass Restoration

**November 16th** – Hot Topics (Participants Identified)

### **February Program – Introduction (Ag/Wildlife Tax Valuation) – Sens Activity Center in Austin County**

The first meeting for the 2018 series will take place on ***Friday, February 16, 2018*** at the Sens Activity Center in Austin County located at 200 Briar Ridge Dr. in Bellville. Our initial session will provide an overview of the program, share information for local resources, and provide participants with an opportunity to learn more about the fundamentals of getting started with managing their property. Appraisers from each county will also be on hand for individual county breakout sessions to help answer questions related to Ag/Wildlife Tax Valuation for participants. This is a great opportunity to network with other new landowners and learn about resources that can be of great assistance to you in establishing an agricultural or wildlife exemption for your property. Don't miss this wonderful opportunity!

For more information please contact the Texas A&M AgriLife Extension Office in Austin County (979-865-2072), Colorado County (979-732-2082), Fayette County (979-968-5831), or Washington County (979-277-6212). Registration materials and more information can also be found on our website, <https://agrilife.org/coastalbend/nlo/>

*Kara J. Matheney, MS*

Texas A&M AgriLife Extension Service

County Extension Agent – Agriculture & Natural Resource



*The members of Texas A&M AgriLife will provide equal opportunities in programs and activities, education, and employment to all persons regardless of race, color, sex, religion, national origin, age, disability, genetic information, veteran status, sexual orientation, or gender identity and will strive to achieve full and equal employment opportunity throughout Texas A&M AgriLife. The Texas A&M University System, U.S. Department of Agriculture, and the County Commissioners Courts of Texas Cooperating. Individuals with disabilities who require an auxiliary aid, service or accommodation in order to participate in this meeting are encouraged to contact the County Extension Office at (979) 277-6212 prior to the meeting to determine how reasonable accommodations can be made.*



# FREE RANCHERS LEASING WORKSHOP

Monday,  
February 26, 2018  
Cat Spring, TX

February 26, 2018 ■ 9:00 am – 1:00pm ■ Cat Spring Ag Hall ■ 13035 Hall Road, Cat Spring, TX

Interested in information on negotiating & drafting grazing, hunting, & livestock leases? Wonder how to set a lease rate? Curious about Texas landowner liability? Join us at the Ranchers Leasing Workshop!



Anyone needing specific accommodations to participate in this educational meeting should contact Tiffany at 806-677-5668 at least five days prior to the event so arrangements can be made. Texas A&M AgriLife Extension provides equal opportunities in its programs and employment to all persons, regardless of race, color, sex, religion, national origin, disability, age, genetic information, veteran status, sexual orientation, or gender identity. The Texas A&M University System, U.S. Department of Agriculture, and the County Commissioners Courts of Texas Cooperating.

HOSTED BY  
WASHINGTON,  
AUSTIN, & FAYETTE  
COUNTY EXTENSION

LEAVE WITH A  
RANCHERS LEASING  
HANDBOOK

INTERACT WITH  
AGRICULTURAL  
ATTORNEYS &  
ECONOMISTS

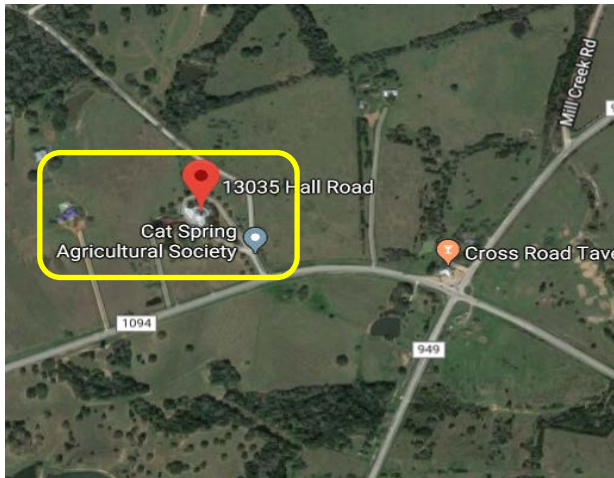
GET ALL YOUR  
QUESTIONS  
ANSWERED!

LUNCH SPONSORED  
BY AG WORKERS  
INSURANCE

PLEASE RSVP TO  
KARA 979-277-6212  
OR TIFFANY  
TDOWELL@TAMU.EDU

BY FEBRUARY 19

**Cat Spring Ag Hall  
13035 Hall Road, Cat Spring, TX**



**Driving Directions:**

**From Austin County (Bellville):**

Turn right onto N FM-2429. After 3.5 miles turn right onto FM-949. After 3.5 miles turn right onto FM-1094. Take the 1<sup>st</sup> right onto Hall Road.

**From Fayette County (La Grange):**

Merge onto TX-71 E. Turn left onto FM-955 (FM-955 becomes W Market St). In Fayetteville turn right onto S Scott St/FM-1291. Stay straight to go onto FM-1291 through Frelsburg. After 8.8 miles FM-1291 becomes FM-109. After 3.8 miles you will arrive in New Ulm. Turn right onto Bastrop Rd./FM-1094. Take a left onto Hall Road. If you reach the crossroads (flashing lights) you have gone too far.

**From Washington County (Brenham):**

Take TX-36 toward Bellville. Turn right onto E Main Street. Turn right onto S Front Street. After 1.75 miles turn right onto N FM-2429. After 3.5 miles turn right onto FM-949. After 3.5 miles turn right onto FM-1094. Take the 1<sup>st</sup> right onto Hall Road.

# 2018 Tomato and Pepper Plant Sale

*All Proceeds benefit the Extension Horticulture Committee's Scholarship Fund. Scholarships are awarded to graduating seniors in Brenham and Burton who are pursuing a career in an agriculture related field.*

## Plant 4 Packs for \$2.25

### Small Tomatoes (1 to 5 ounces)

- ◆ Juliet
- ◆ Large Cherry
- ◆ Roma

### Medium Tomatoes (6 to 10 ounces)

- ◆ Amelia
- ◆ Arkansas Traveler
- ◆ BHN 589
- ◆ Celebrity
- ◆ Homestead (Old World Variety) *\*NEW\**
- ◆ Lemon Boy (Yellow Acidless Variety)

### Large Tomatoes (10 ounces and up)

- ◆ Cherokee Purple (Heirloom)
- ◆ Genuwine (Heirloom) *\*NEW\**
- ◆ Super Fantastic *\*NEW\**

*All plants are propagated locally from seed.  
We will do our best to get everyone their first choice on variety. If we fall short from the grower we will replace with a comparable variety.*

## Plant 4 Packs for \$2.25

### Herbs *\*NEW\**

- ◆ Cilantro
- ◆ Dill
- ◆ Parsley

### Jalapeno Peppers

- ◆ Regular Jalapeno (Hot)
- ◆ TAMU Jalapeno (Mild)
- ◆ Fool You Jalapeno (No Heat)

### Squash and Egg Plant

- ◆ Egg Plant (Traditional)
- ◆ Zucchini Squash
- ◆ Yellow Squash

### Peppers

- ◆ Banana Pepper *\*NEW\**
- ◆ Big Bertha Bell Pepper
- ◆ Gypsy Yellow Sweet Bell Pepper
- ◆ Orange Pepper *\*NEW\**

## Start Placing Your Orders Today!

1305 East Blue Bell Road, Suite 104 in Brenham

Orders must be paid for in full when placed

## Order Deadline is Friday, March 16<sup>th</sup>

Plants will be available for pick up on Tuesday, March 27 from 10:00am until 5:30pm at the Washington County Fairgrounds Sales Facility Building in Brenham. Please contact the Washington County office of Texas A&M AgriLife Extension Service at (979) 277-6212 or visit our website at [washington.agrilife.org](http://washington.agrilife.org) for more information.

# Tomato Varieties

**Light requirements:** Full sun. **Soil requirements:** Tomatoes need well-drained, nutrient-rich soil. Amend soil with compost or other organic matter prior to planting. **Water requirements:** Keep soil consistently moist throughout the growing season. Moisture is critical to prevent cracked fruits and blossom end rot. Mulch soil to reduce water evaporation.

## Amelia

Fruit size: 8 to 10 ounces

Determinate

Amelia is a hybrid with outstanding disease resistance and resistance to cracking. Because it makes a nice, neat plant, Amelia is cooperative in containers, too. One of the few tomatoes resistant to spotted wilt virus.

## Arkansas Traveler

Fruit Size: 6 to 8 ounces

Indeterminate

Arkansas Traveler produces goodly numbers of rich flavorful tomatoes. Deep pink when ripe, it is the balance of sweetness and tartness accounts for its standing as one of the very best varieties.

## BHN-589

Fruit Size: 8 to 10 ounces

Determinate

BHN-589 offers a surprising combination of fruit quality, shelf life, and really good flavor. It also boasts a complete disease-resistance package including crack-tolerance and offers very high yields. Large to extra-large attractive fruit have real tomato taste.

## Celebrity \*County Favorite\*

Fruit size: 7 to 8 ounces

Determinate

Celebrity vines bear clusters of large tomatoes that are prized for their flavor. This is a great, all-round, dependable choice for your "basic" tomato needs — sandwiches, slicing, snacks, and bruschetta

## Cherokee Purple (Heirloom)

Fruit Size: 10 to 12 ounces

Indeterminate

This heirloom tomato variety consistently ranks very high in taste tests. Slice Cherokee Purple tomato for rich, dark color and unmatched sweet, rich taste on sandwiches or in salads.

## Genuwine (Heirloom) \*NEW\*

Fruit size: 10.5 – 11.5 ounces

Indeterminate

Genuwine is an Heirloom Marriage tomato, selected for the best attributes of old and new. These fruits are smooth, unblemished, and anywhere from 10.5 to 11.5 ounces on average -- just the right size for slicing onto sandwiches and into salads!

## Homestead (Old World Variety) \*NEW\*

Fruit size: 8 – 9 ounces

Determinate

An old favorite dating from 1954. Developed by the University of Florida especially for hot climates and known for its reliability to set fruit at high temperatures. Produces firm, meaty tomatoes. Large vines help shade fruit to protect from sunburn, and will need to be staked or caged.

## Juliet

Fruit size: 1 to 2 ounces

Indeterminate

The wonderfully sweet fruit are crack resistant and remain in good condition on the vine longer than most cherry tomatoes. The fruit are as soft and juicy as cherry tomatoes, and they have a longer shelf life so you can keep them on hand without picking every day.

## Large Cherry

Fruit size: 1 to 2 ounces

Indeterminate

Cherry Tomatoes are equally famous for being easy to grow and tasting delicious! The plant produces abundant clusters of smallish, vibrant colored fruit.

## Lemon Boy (Yellow Acidless Variety)

Fruit size: 7 ounces

Indeterminate

Lemon Boy hybrid is an eye-catching tomato with wonderful color and flavor. The deep globe fruit is slightly tangy, but also sweet and mild, meaty, and smooth — perfect for slicing.

## Roma

Fruit size: 3 inches long

Determinate

Roma produces a large harvest of thick-walled, meaty, bright red, egg-shaped tomatoes about 3 inches long and with few seeds. This tomato is not juicy. This is not a slicing tomato. Instead, the flesh is thick and drier so that it will cook down into a thick sauce.

## Super Fantastic \*NEW\*

Fruit size: 10 ounces

Indeterminate

Well adapted throughout the country, Super Fantastic bears delicious beefsteak-type tomatoes that are solid, meaty, and smooth skinned.

# 2018 Extension Horticulture Committee Tomato and Pepper Plant Sale

Customer Name \_\_\_\_\_

Customer Phone Number \_\_\_\_\_

Customer Email Address \_\_\_\_\_

**Tomatoes**

# of 4 Packs Ordered    \*\*\$2.25 Each\*\*

Amelia		
Arkansas Traveler		
BHN 589		
Celebrity		
Cherokee Purple (Heirloom)		
Genuwine (Heirloom)		
Homestead (Old World Variety)		
Juliet		
Large Cherry		
Lemon Boy (Acidless Variety)		
Roma		
Super Fantastic		

**Herbs**

Cilantro		
Dill		
Parsley		

**Jalapeno**

Regular Jalapeno (Hot)		
TAMU Jalapeno (Mild)		
Fool You Jalapeno (No Heat)		

**Squash and Eggplant**

Egg Plant (Traditional)		
Yellow Squash		
Zucchini Squash		

**Bell Peppers**

Banana Pepper		
Big Bertha		
Gypsy Yellow Sweet		
Orange Pepper		

Total		
-------	--	--

Paid by check		Paid by cash	
---------------	--	--------------	--

Orders are due to the Washington County Extension office by:  
**Friday, March 16, 2018**

Pick up **Tuesday, March 27, 2018**  
**10am-5:30pm**  
at the Washington County Sales Facility.

All plants are propagated locally from seed. We will do our best to get everyone their first choice on variety. If we fall short from the grower we will replace with a comparable variety.

Make all checks payable to: **Horticulture Committee**

# *Multi-County New Landowner Educational Series*

## *Introduction*

TEXAS A&M  
**AGRI**LIFE  
EXTENSION

# *February 16, 2018*

Sens Activity Center  
200 Briar Ridge Drive  
Bellville, Texas

**Registration 1:00-1:30 pm**  
**Program 1:30-5:00 pm**

\$20/Person/Session  
\$125/Person/Series - \$200/Couple/Series  
Drinks and Refreshments Included

**For More Information  
Please Contact:**

**Haylee Wolfford**  
Austin County  
(979)865-2072

**Stephen Janak**  
Colorado County  
(979) 732-2082

**Scott Willey**  
Fayette County  
(979) 968-5831

**Kara Matheney**  
Washington County  
(979) 277-6212

### *Featuring:*

Overview of Program Series  
Local Resources  
County Appraisal Districts

## *1CEU*

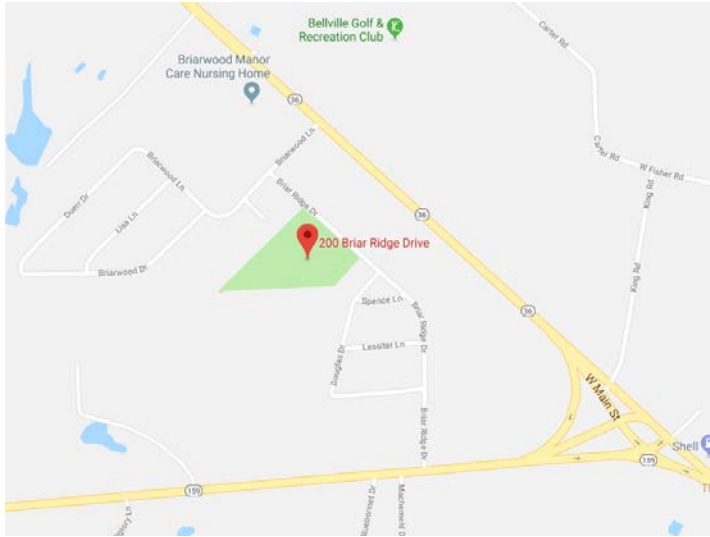
(1 General)



The members of Texas A&M AgriLife will provide equal opportunities in programs and activities, education, and employment to all persons regardless of race, color, sex, religion, national origin, age, disability, genetic information, veteran status, sexual orientation, or gender identity and will strive to achieve full and equal employment opportunity throughout Texas A&M AgriLife. The Texas A&M University System, U.S. Department of Agriculture, and the County Commissioners Courts of Texas Cooperating. Individuals with disabilities who require an auxiliary aid, service or accommodation in order to participate in this meeting are encouraged to contact the County Extension Office at [\(979\) 277-6212](tel:979-277-6212) prior to the meeting to determine how reasonable accommodations can be made.



**Sens Activity Center**  
**200 Briar Ridge Drive, Bellville**



**Driving Directions:**

**From Colorado County (Columbus):**

Merge onto I-10 E going toward Houston. Take the FM-949 exit, EXIT 704. Merge onto Frontage Rd. Take the 1<sup>st</sup> left onto FM-949. Turn left onto FM-949/Frontage Rd. Take the first right onto FM-949 and continue to follow FM-949 for 15.5 miles. Turn left onto N FM-2429. After 3.5 miles turn left onto S Front St. Turn left onto E Main St. Turn left onto Briarwood Ln. Take the 1<sup>st</sup> left onto Briar Ridge Road. Sens Activity Center will be on the left.

**From Fayette County (La Grange):**

Merge onto TX-71 E. Turn left onto FM-955 (FM-955 becomes W Market St). Turn right onto N Rusk St. Take the 2<sup>nd</sup> left onto W Main St./TX-159. Continue on TX-159 for 27 miles. Turn left onto Briar Ridge Dr. Sens Activity Center will be on the left.

**From Washington County (Brenham):**

Take TX-36 toward Bellville and follow for 14.6 miles. Turn right onto Briarwood Ln. Take the 1<sup>st</sup> left onto Briar Ridge Road. Sens Activity Center will be on the left.

# 2018 Schedule

## 3rd Friday of the Month

### All Programs Begin with:

Registration: 1:00-1:30PM

Educational Program: 1:30-5:00PM

<b>February 16</b> Austin County	Introduction Ag/Wildlife Valuations
<b>March 16</b> Fayette County	Pond Management
<b>April 20</b> Colorado County	Weed & Brush Control
<b>May 18</b> Washington County	Forage Production Livestock Production
<b>August 17</b> Colorado County	Bees and Trees for Homeowners
<b>September 21</b> Fayette County	Horticulture Production
<b>October 19</b> Austin County	Wildlife Management Native Grass Restoration
<b>November 16</b> Washington County	Hot Topics (Participant Identified)

### Maps and Directions

Provided prior to each monthly meeting

Visit our **New Landowner Website** for additional information or to preregister for the series.

**\*\*NEW\*\* Online Credit Card Payment Option for Preregistration**

<https://agrilife.org/coastalbend/nlo/>

The members of Texas A&M AgriLife will provide equal opportunities in programs and activities, education, and employment to all persons regardless of race, color, sex, religion, national origin, age, disability, genetic information, veteran status, sexual orientation, or gender identity and will strive to achieve full and equal employment opportunity throughout Texas A&M AgriLife. The Texas A&M University System, U.S. Department of Agriculture, and the County Commissioners Courts of Texas Cooperating.



**What** is it?

**T**he Multi-County New Landowner Program is a series of meetings, seminars, and field days designed to provide information and resources related to agriculture, natural resources, wildlife, and land management for new landowners in Austin, Colorado, Fayette, and Washington counties. Participants in the program will hear from Extension experts in various fields about best management practices they can implement on their own property.

## What do you receive with your full enrollment?

- ◆ 24+ hours of instruction, training from experts
- ◆ Notebook **FULL** of publications and resources
- ◆ Opportunity for one-on-one discussion with experts, County Extension Agents, and others
- ◆ Opportunity to visit local farms/ranches
- ◆ Opportunity to network with other landowners
- ◆ Get your agriculture and natural resource questions answered and dispel internet myths

## What does the program cost?

If attending **all sessions**

\$125.00 per person or \$200.00 per couple

*\$35.00 savings per person for entire series  
or \$120.00 savings per couple for entire series*

If attending **select sessions**

\$20.00 per person for each session

Payable at the door or in advance.

## Who are we?

Extension is a public agency based within the land grant university, Texas A&M University. We have agents in each Texas county that act as an Extension of the University knowledge and research. We provide research-based information to help Texans better their lives.

## What do we do?

We provide programs, tools, and resources - on a local and statewide level - that teach people how to improve agriculture and food protection, advance health practices, protect the environment, strengthen our communities, and enrich youth.

# Testimonials

*“No one in my family ever owned agricultural land until my wife and I purchased a small farm in Winchester. All that we’ve done to the property was with the help and knowledge gained through the New Landowners Program. Each class/program is lead by experts (many PhD’s), many held on working farms/ranches, always AgriLife folks to ask questions and get meaningful/useful answers. A must for the new landowner who wants to raise cattle or grow hay or receive a wildlife exemption. Personally, I would recommend you attend each class and, if appropriate, attend the same class twice.”*

**~John Anderson, 2015 Graduate**

*“The New Landowner Program is an effective tool to help educate individuals about rural landownership. It gives individuals valuable tools to make the experience not only more enjoyable but also profitable. The program also helps new property owners navigate rural life in Texas.”*

**~Fayette County Judge Ed Janecka**

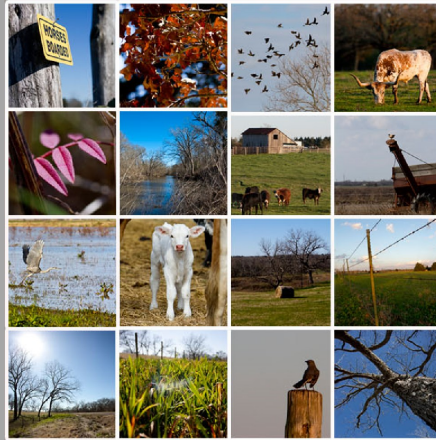
*“I had never heard of any such agency before! I was very relieved to know that there was a place where I could go for information.”*

**~New Landowner Graduate 2009**

*“I wanted to learn as much as I could about how to control weeds and improve the soil health of my property. After I took the course and saw first-hand how to do it, I was very confident that I could do it.”*

**~New Landowner Graduate 2009**

# who to Contact



**Haylee Wolfford**

979.865.2072

haylee.wolfford@ag.tamu.edu

*Austin County*

**Stephen Janak**

979.732.2082

stephen.janak@ag.tamu.edu

*Colorado County*

**Scott Willey**

979.968.5831

sawilley@ag.tamu.edu

*Fayette County*

**Kara Matheney**

979.277.6212

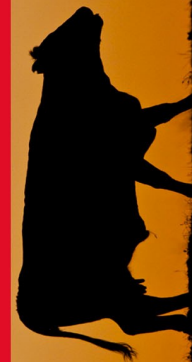
kjmatheney@ag.tamu.edu

*Washington County*

learn

take home

implement



Multi-County New Landowner Program

TEXAS A&M  
AGRI LIFE  
EXTENSION