

AGEC 429: AGRICULTURAL POLICY

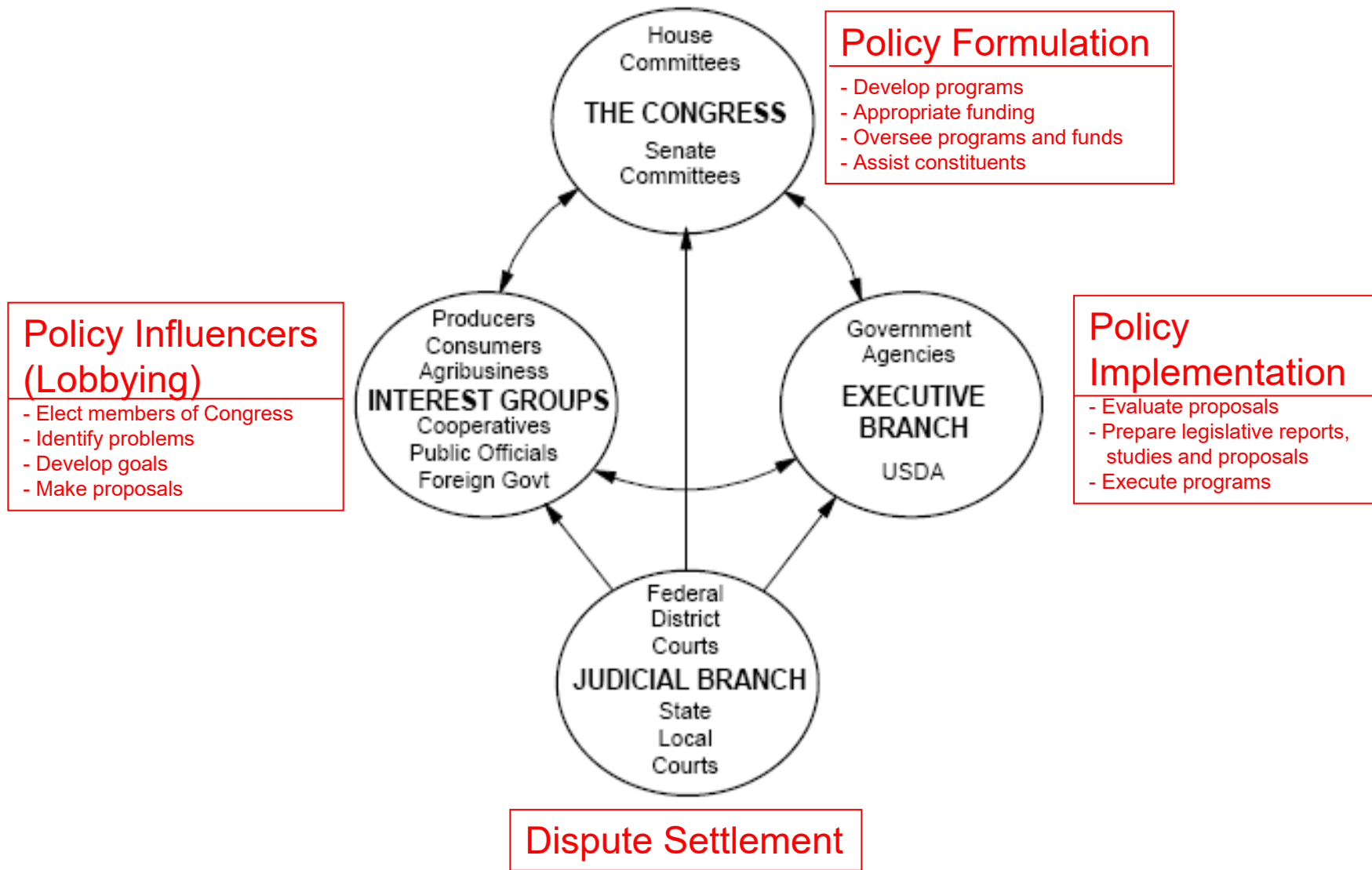


*Agricultural
and Food Policy*

LECTURE 4: PARTICIPANTS IN THE AGRICULTURAL POLICY PROCESS I

AGEC 429 Lecture #4

PARTICIPANTS IN THE AGRICULTURAL POLICY PROCESS I



Participants in the Policy Process



Policy Formulation Process (Congress)



1. Proposals (legislative bills) – Senate, House, and/or Administration
2. Hearings by subcommittee
3. Subcommittee “mark-up” sessions
 - process by which congressional sub-committees debate, amend, and rewrite proposed legislation
4. Subcommittee and Full Committee approvals
5. Floor approval in Senate and House Separately
6. Conference Committee
 - drafts a compromise bill that both houses can accept
 - composed of the senior Members of the standing committees of the House and Senate that originally considered the legislation
7. Approval of Conference Report (House and Senate)
8. President signs or vetoes
9. Separate appropriation and budget process

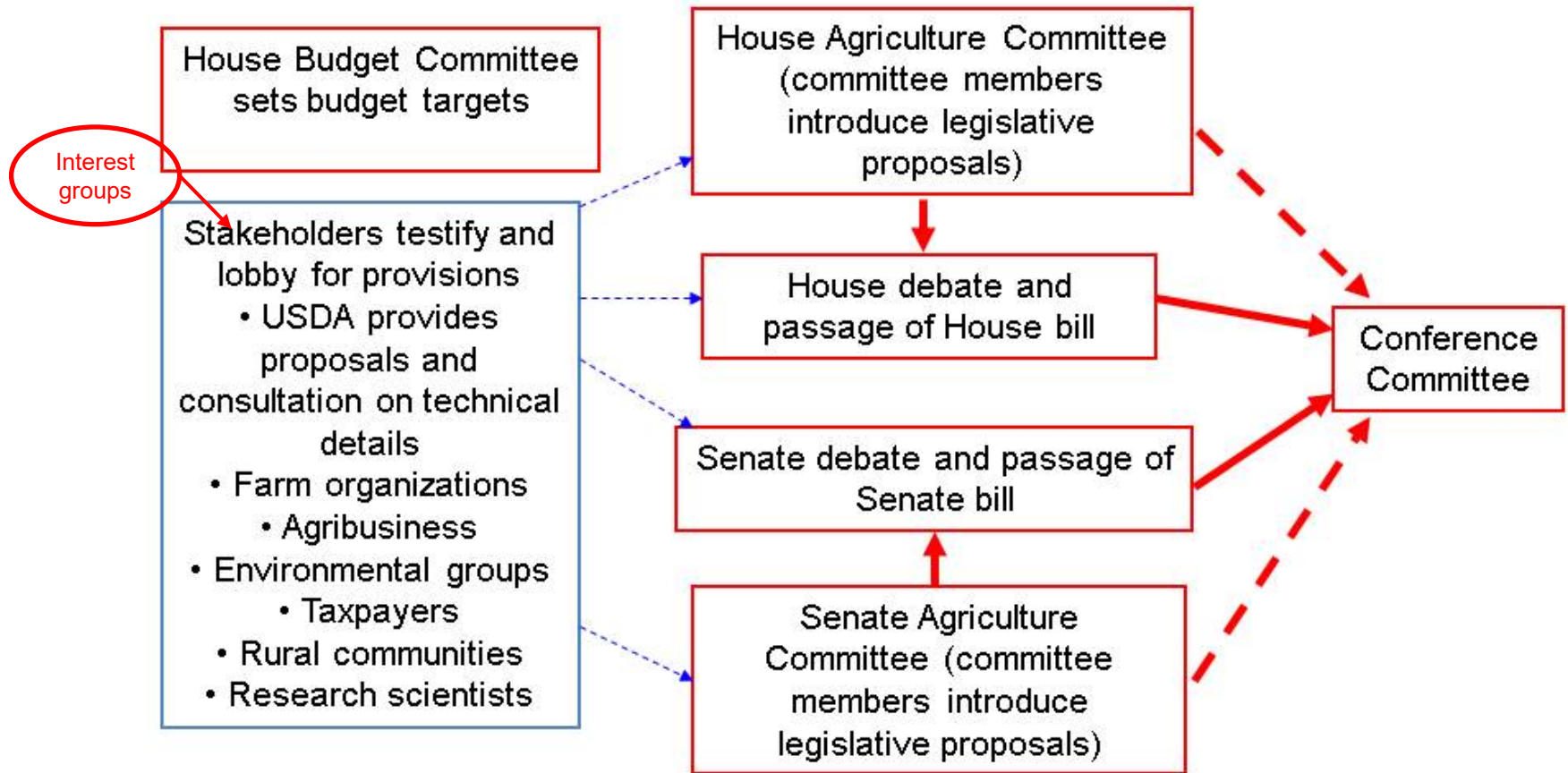


ON CONCURRING IN SENATE AMENDMENT WITH AN AMENDMENT		LIVE 11:02 PT	
H R 3997			
	YE	NAY	PRES NV
DEMOCRATIC	141	94	
REPUBLICAN	66	132	
INDEPENDENT			1
TOTALS	207	226	1
TIME REMAINING		0:00	
		SEP 17 08:55	MSNBC



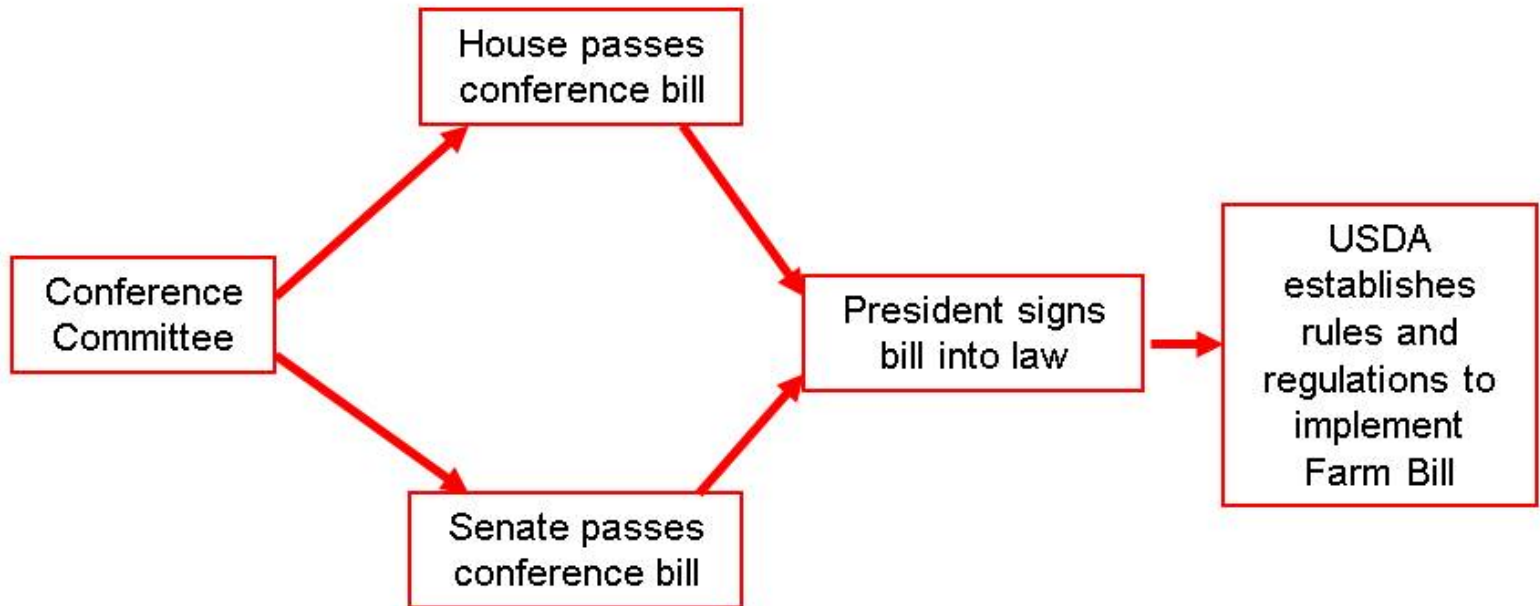
Participants in the Policy Process

A simplified diagram of the Farm Bill legislative process, part I



Participants in the Policy Process

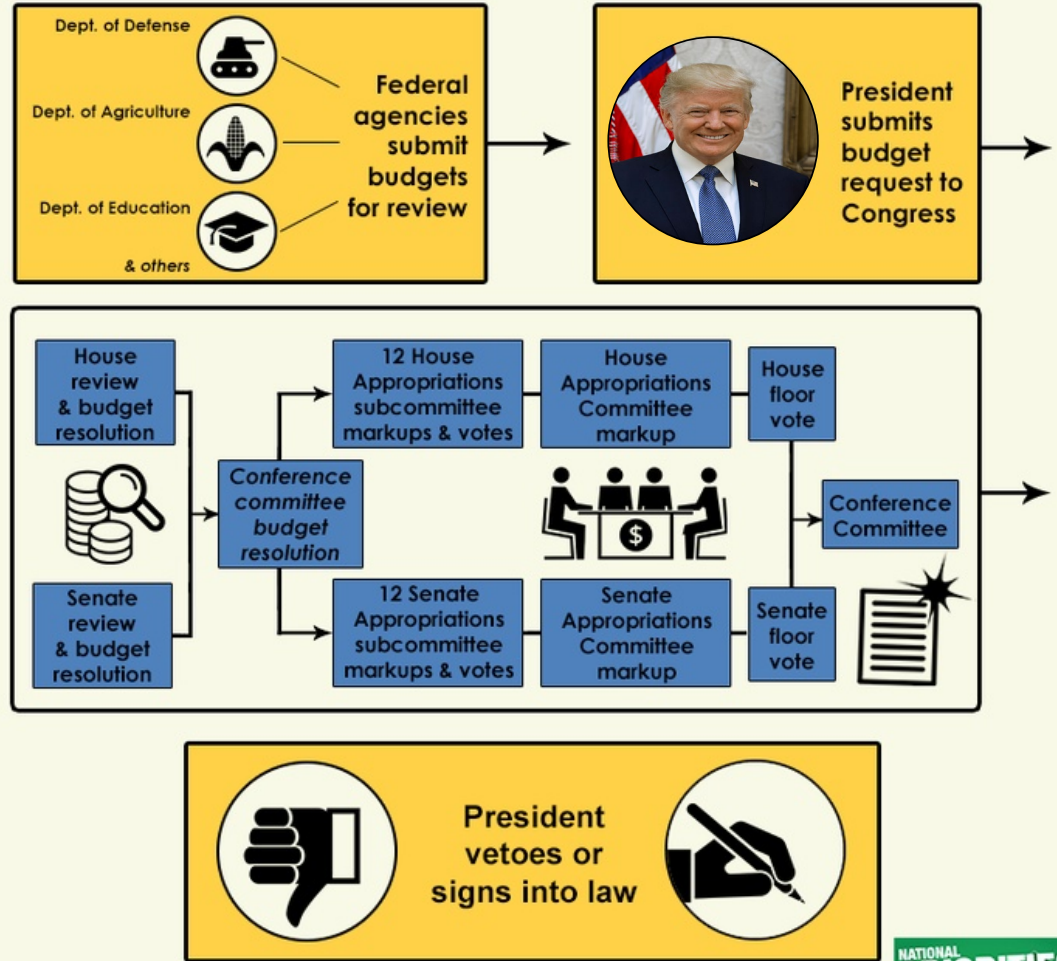
A simplified diagram of the Farm Bill legislative process, part II



Participants in the Policy Process



The Annual Federal Budget Process

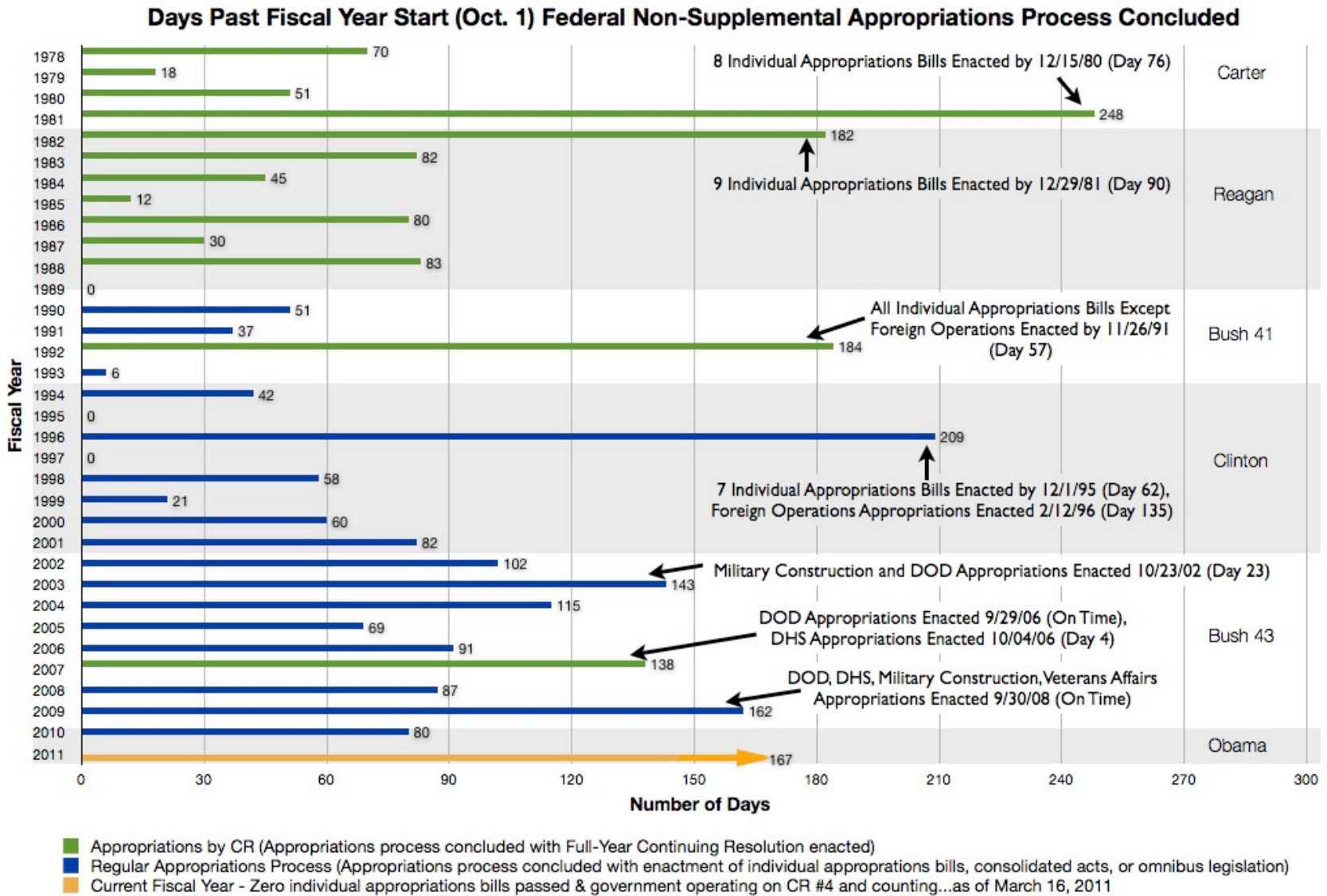


CONGRESSIONAL APPROPRIATIONS AND BUDGET PROCESS

A separate process to appropriate funds to implement and run programs.

Participants in the Policy Process

Budget/Appropriations Process Almost Always Runs Past the Deadline





THE EXECUTIVE PROCESS

(Policy Implementation)

Farm Income Support Example



Congress first chooses allowable instruments in a Farm Bill:

1. Deficiency Payments
2. Countercyclical Payments
3. Price supports
4. Crop insurance

**Just a few examples
(very few!)**

Executive then has many decisions to make:

1. Which instrument to implement (or combination)?
2. What amount of payment or price support?
3. What are the probable consequences?
4. What system is needed to administer & monitor the program?

Decisions generally include:

1. Public comments on impact statement of alternatives.
2. Public and congressional pressures.
3. Internal debate within USDA & with other agencies.

Participants in the Policy Process



THE JUDICIAL PROCESS

(Dispute Settlement)



1. Courts interpret the constitution and settle disputes concerning application of laws.
2. Courts determine “_____”
 - Broad and vague legislation
 - Congress’ means of passing problems to the courts



LOBBYISTS!

POLICY INTEREST GROUPS (PIGS)

<https://www.youtube.com/watch?v=Q46kxNc5BLE>

- General Farm Organizations
- Commodity Organizations
- Public Interest Groups
- Agribusiness/Trade Associations



TWO TYPES OF LOBBYING:

Direct Lobbying: Attempting to influence any legislation through communication with any member or employee of a legislative body, or with any government official or employee who may participate in the formulation of the legislation.

Grassroots Lobbying: Attempting to influence any legislation by affecting the opinions of the general public or any segment thereof.



POLICY INTEREST GROUPS (PIGS)

- **General Farm Organizations**



American Farm Bureau Federation



National Farmers Union



National Farmers Organization



The Grange

- **Commodity Organizations**

- Every commodity has at least one – and some have many
- Some represent just one segment of the industry (e.g., producers)
- Others represent various segments of the industry (e.g., producers, millers, processors, retailers, exporters, etc.)
- Some represent different regions of the country

Participants in the Policy Process

Examples of Agricultural Commodity and Food Interest Groups

- Alfalfa Council Organizations
- Alpaca Owners and Breeders Association
- American Angus Association**
- American Brahman Breeders Association
- American Crop Protection Association
- American Dairy Association
- American Dairy Goat Association
- American Dairy Products Institute
- American Dairy Science Association
- American Dry Bean Board
- American Egg Board
- American Emu Association
- American Farm Bureau Federation
- American Fisheries Society
- American Forest and Paper Association
- American Guernsey Association
- American Hereford Association
- American-International Charolais Association
- American Jersey Cattle Association
- American Maine-Anjou Association
- American Meat Institute (AMI)
- American Ostrich Association
- American Seed Trade Association
- American Sheep Industry Association
- American Simmental Association
- American Soybean Association**
- American Sugar Alliance
- American Sugarbeet Growers Association
- American Tilapia Association
- American Vinters Association
- Animal Agriculture Alliance
- Catfish Institute
- Cherry Marketing Institute
- Corn Refiners Association
- Great Plains Buffalo Association
- Holstein Association**
- Midwest Dairy Association
- Mohair Council of America
- Mushroom Council

- National Aquaculture Association
- National Association of Wheat Growers**
- National Bison Association
- National Cattlemen's Beef Association
- National Chicken Council
- National Christmas Tree Association
- National Corn Growers Association
- National Cotton Council of America
- National Farmers Organization
- National Farmers Union
- National Fisheries Institute
- National Honey Board
- National Meat Association
- National Milk Producers Federation
- National Onion Association
- National Pork Board
- National Potato Promotion Board
- National Watermelon Promotion Board
- North American Blueberry Council
- North American Farmers' Direct Marketing Assoc.
- North American Meat Processors Association
- North American Native Fishes Association
- North Amer. Shetland Sheepbreeders Assoc.
- North American Strawberry Growers Assoc.
- Northwest Forestry Association
- The Organic Trade Association
- Potato Association of America
- Red Angus Association of America
- Salt Institute
- Southern Nurserymen's Association
- Specialty Coffee Association of America
- United Fresh Fruit and Vegetable Association
- USA Pears-Pear Bureau Northwest
- U.S. Dairy Export Council
- U.S. Feed Grains Council
- U.S. Hide, Skin & Leather Association
- U.S. Poultry & Egg Council
- U.S. Wheat Associates
- United Braford Breeders

- United Egg Producers
- United Soybean Board**
- U.S. Rice Federation
- Utility Wind Interest Group, Inc.
- Western Growers Association
- Western Red Cedar Lumber Assoc.
- Wine Institute
- Wind Powering America

NOTE: Many interest groups have no policy goals or objectives (that is they DON'T lobby policy makers).

They exist solely to serve the marketing, buying, networking, information, and other needs of their members

POLICY INTEREST GROUPS (PIGS)

- **General Farm Organizations**



American Farm Bureau Federation



National Farmers Union



National Farmers Organization



The Grange

- **Commodity Organizations**

- Every commodity has at least one – and some have many
- Some represent just one segment of the industry (e.g., producers)
- Others represent various segments of the industry (e.g., producers, millers, processors, retailers, exporters, etc.)
- Some represent different regions of the country

- **Public Interest Groups**

- Typically focus on only 1 issue such as:
 - Environment (Sierra Club, National Resources Defense Council, EWG)
 - Hunger (Bread for the World, Catholic Relief Organization, Mercy Corps)
 - Animal rights (PETA)
 - Consumers (CFA, CW, CU, Center for Science in the Public Interest)
<http://www.infoplease.com/ipa/A0002120.html>

- **Agribusiness/Trade Associations**

Examples: Restaurant Associations, Farm Equipment Dealers, Farm Chemical Associations, Dairy Foods Associations, and many others

Examples of Farm Equipment Associations

- Ag Electronics Association (AEA)
- Agricultural & Industrial Manufacturers Reps Association (AIMRA)
- Ag Electronics Association (AEA)
- Agricultural & Industrial Manufacturers Reps Association (AIMRA)
- Agricultural Retailers Association
- American Society of Agricultural Consultants (ASAC)
- American Society of Agricultural Engineers (ASAE)
- American Society of Farm Equipment Appraisers
- **Association of Equipment Manufacturers (AEM)**
- Canada West Equipment Dealers Association
- Canadian Farm & Industrial Equipment Institute (CFIEI)
- Canadian Farm Builders Association
- Canadian Society for Engineering in Ag, Food & Biological Systems (CSAE)
- **Farm Equipment Manufacturers Association (FEMA)**
- Farm Equipment Wholesalers Association (FEWA)
- Iowa-Nebraska Equipment Dealers Association
- Irrigation Association
- Italian Trade Commission
- Lawn & Garden Marketing & Distribution Association

- National Christmas Tree Association
- National Corn Growers Association
- Midwest Equipment Dealers Association
- Mississippi Valley Equipment Association (MVEA)
- National Agri-Marketing Association
- North American Equipment Dealers Association (NAEDA)
- Ohio-Michigan Equipment Dealers Association
- Ontario Retail Farm Equipment Dealers Association
- Outdoor Power Equipment Institute (OPEI)
- Pacific Northwest Association
- Prairie Implement Manufacturers Association (PIMA)
- Propane Education & Research Council
- Saskatchewan Trade & Export Partnership (STEP)
- Society of Automotive Engineers (SAE)
- South West Hardware & Implement Association (SWHIA)
- Texas Agricultural Irrigation Association
- Tractor & Machinery Association of Australia
- UNAMOMA/COMAMOTER Western Association